

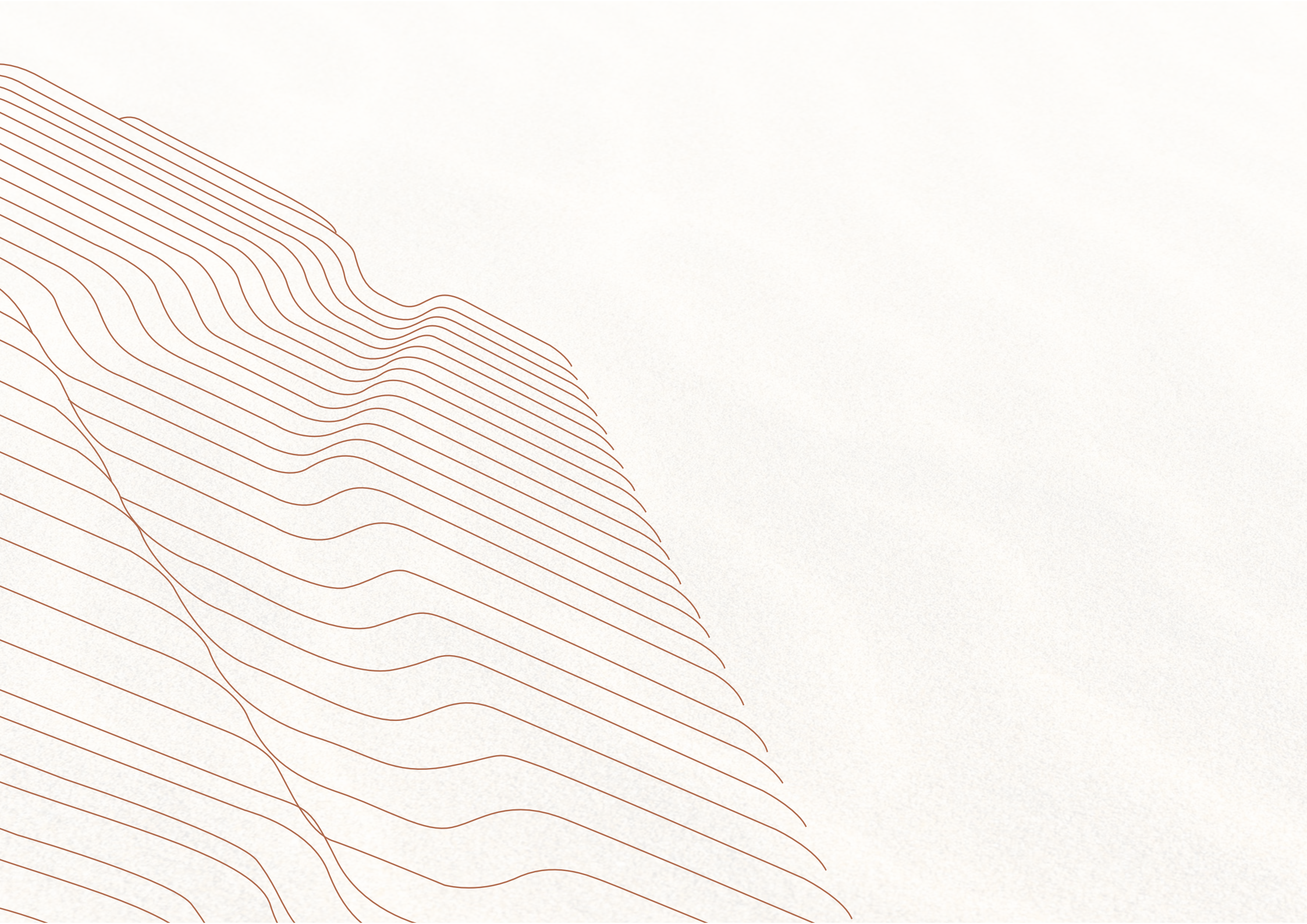
AZHA

MILLENNIUM

RESIDENCES























# Dubai

Dubai is a visionary city where ambition, innovation, and luxury converge. With its iconic skyline, world-class developments, and thriving economy, it attracts global investors, entrepreneurs, and dreamers alike. Driven by growth and opportunity, Dubai stands as a dynamic hub for those seeking success, inspiration, and a future without limits.









## Jumeirah Village Triangle

Jumeirah Village Triangle (JVT) represents the future of urban living, with visionary planning that embraces demographic diversity and evolving needs. Spanning over 242 hectares, this freehold gated community is located on Dubai's northern strategically positioned between Sheikh Mohammed Bin Zayed Road and Al Khail Road.

JVT is a model of modernity and sustainability which offers more than just a suburban neighbourhood; it's a sanctuary for expanding families and young couples in search of an all-embracing lifestyle.



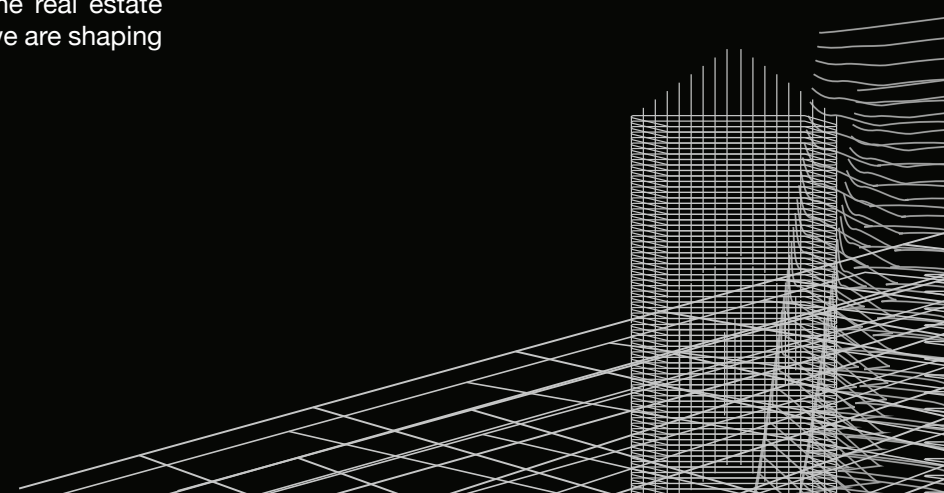
# Emirates Properties Group

Emirates Properties Group Real Estate & Development is revolutionizing the UAE real estate market with a fresh perspective focused on value and personalized client experiences. Since our establishment in 2007, we have swiftly grown into one of the region's leading real estate and property development firms, grounded in integrity and reliability.

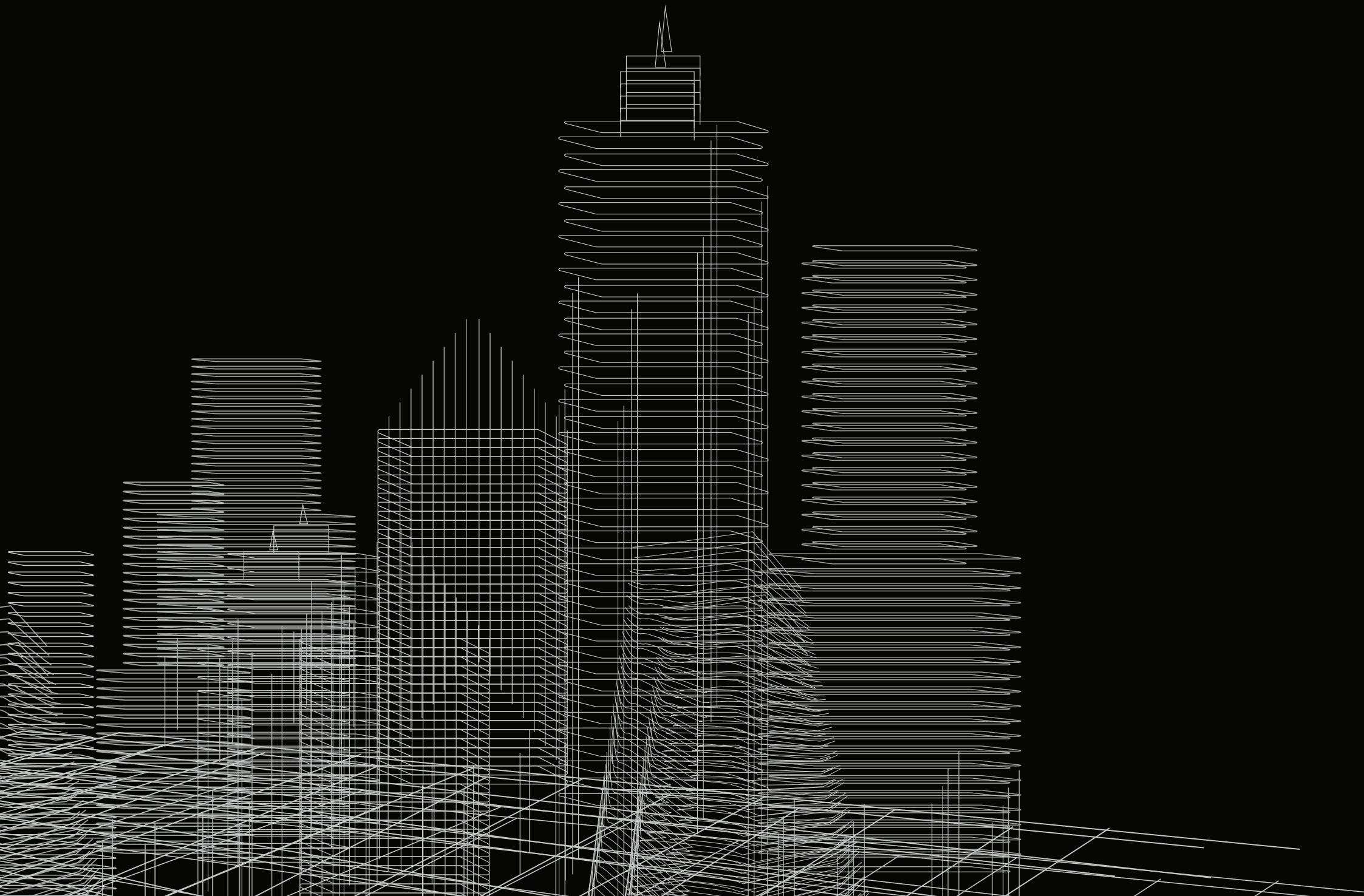
We take pride in delivering exceptional service quality, being one of the few companies in the region to obtain the ISO 9001 certification. Our dedicated team possesses a profound understanding of the UAE property landscape, enabling us to identify lucrative opportunities tailored to the unique aspirations of our diverse international clientele.

At Emirates Properties Group, we believe that property ownership should be more than just a transaction; it should be a rewarding journey that aligns with individual dreams. Our commitment to building lasting relationships with clients ensures that their investment experiences are both enriching and successful.

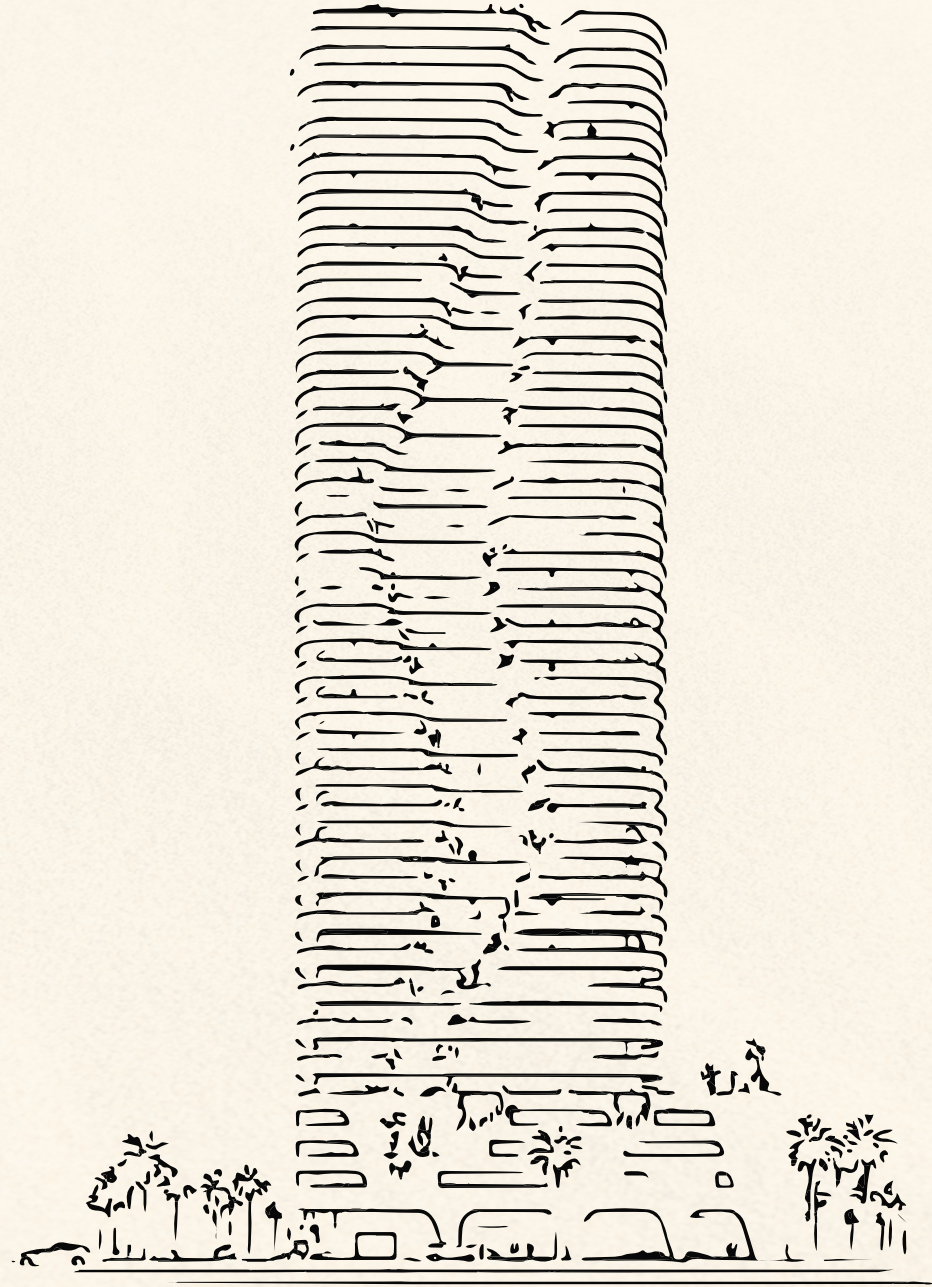
As we look to the future, we remain dedicated to innovating and enhancing the real estate experience in the UAE, making it accessible and fulfilling for everyone. Together, we are shaping a vibrant future for property ownership in the region.













# A Premium Community in the Making

More than just a residence, this architectural marvel is designed to foster connection, bringing people together through thoughtful spaces, shared experiences, and a luxurious lifestyle rooted in comfort, style, and belonging.



A woman with long, wavy brown hair is sitting on a plush, light-colored sofa. She is wearing a vibrant red, strapless, floor-length gown with a draped bodice. Her right hand is raised near her face, and she is looking off to the side with a thoughtful expression. The background is dark, featuring out-of-focus bokeh lights in shades of blue, yellow, and white, suggesting an evening setting with city lights or festive decorations. The overall mood is elegant and sophisticated.

## Millennium Unique Value Proposition & Highlights

A seamless fusion of modern hospitality and residential living, providing world-class service, exceptional comfort, and a prestigious address in prime locations.



# Key Highlights:

## Hotel-Inspired Luxury Living

- Elegantly designed apartments with contemporary aesthetics.
- Access to hotel amenities (concierge, housekeeping, spa, fitness centers, pools).

## Prime Locations

- Strategically positioned in top-tier cities and business hubs.
- Close to key attractions, financial districts, and lifestyle destinations.
- Ideal for expats, business professionals, and long-stay travelers.

## Seamless Hospitality Services

- Residents enjoy personalized services such as in-room dining, valet parking, and wellness experiences.
- Exclusive resident privileges including discounts at hotel restaurants, spas, and lounges.

## Sustainable & Smart Living

- Eco-friendly building designs with energy-efficient solutions.
- Smart home technology for enhanced convenience and security.
- Green spaces, wellness facilities, and community-driven experiences.





## Welcome to Azha Millennium Residences

Step into the realm of luxury and embrace an invitation to the extraordinary. Indulge your senses, elevate every moment, and discover a world where elegance meets exclusivity, creating unforgettable experiences tailored just for you.



Azha Millennium Residences reimagines the future of modern living with a bold vision rooted in elegance, innovation, and purpose. Set in a thriving urban landscape, this development is crafted for those who seek more than just a home—it's for those who aspire to live exceptionally. Every detail is a reflection of refined taste, from immersive living spaces to tranquil communal zones that foster connection and calm. Here, life flows effortlessly, surrounded by beauty, balance, and brilliance—where your lifestyle evolves with every elevated moment.

## Floors

B + Ground + 4 Podiums + 30 Floors + Rooftop

## Apartments

Studio  
56 units

1 BR  
84 units

2 BR  
56 units







The background features a complex, layered design. On the left, there are several parallel, slightly curved lines in shades of light gray and white, creating a sense of depth and movement. On the right, a series of wavy, horizontal lines in a similar color palette are layered over a faint, light gray grid pattern. The overall effect is one of sophisticated, modern design.

# Live by Mastering the Art of Elegance

Experience a life where each moment flows with grace and purpose. Elegance and style are not just seen, but felt. With a philosophy rooted in refined artistry, every space embodies timeless beauty, blending sophisticated design with effortless comfort. This is where luxury, creativity, and movement come together, offering a truly elevated way of living.



Marvel in  
Every Line

Elegance in  
Every Curve











## Where Luxury Meets Purpose

Designed for people who cherish happiness, wellness, and meaningful living. It offers more than elegance; it's a lifestyle of fulfillment. Live beyond luxury, where every moment matters.



# Masterpiece Beneath the Stars

Imagine a sanctuary where elegance meets the night sky. Wrapped in city lights and starlit views, this masterpiece offers serene luxury, crafted for dreamers who live beautifully beneath the stars.

## Why AZHA MILLENNIUM RESIDENCES



Located in  
Jumeirah Village Triangle



Branded by  
Millennium



World-class  
Interiors & Architecture



Ultra Luxury  
Branded Apartments



Hotel Style Living  
& Exclusive Amenities



High ROI &  
Growing Demand



# Accessibility & CONNECTIVITY



**21 minutes**  
Burj Al Arab



**20 minutes**  
Dubai Marina



**30 minutes**  
DXB Airport



**25 minutes**  
Al Maktoum  
International Airport



**23 minutes**  
Downtown Dubai &  
Burj Khalifa



**10 minutes**  
Circle Mall, JVC



**15 minutes**  
Dubai Hills Mall



**23 minutes**  
Palm Jumeirah



**2 minutes**  
Arcadia School



**25 minutes**  
Jumeirah Beach



**20 minutes**  
Mall Of The Emirates



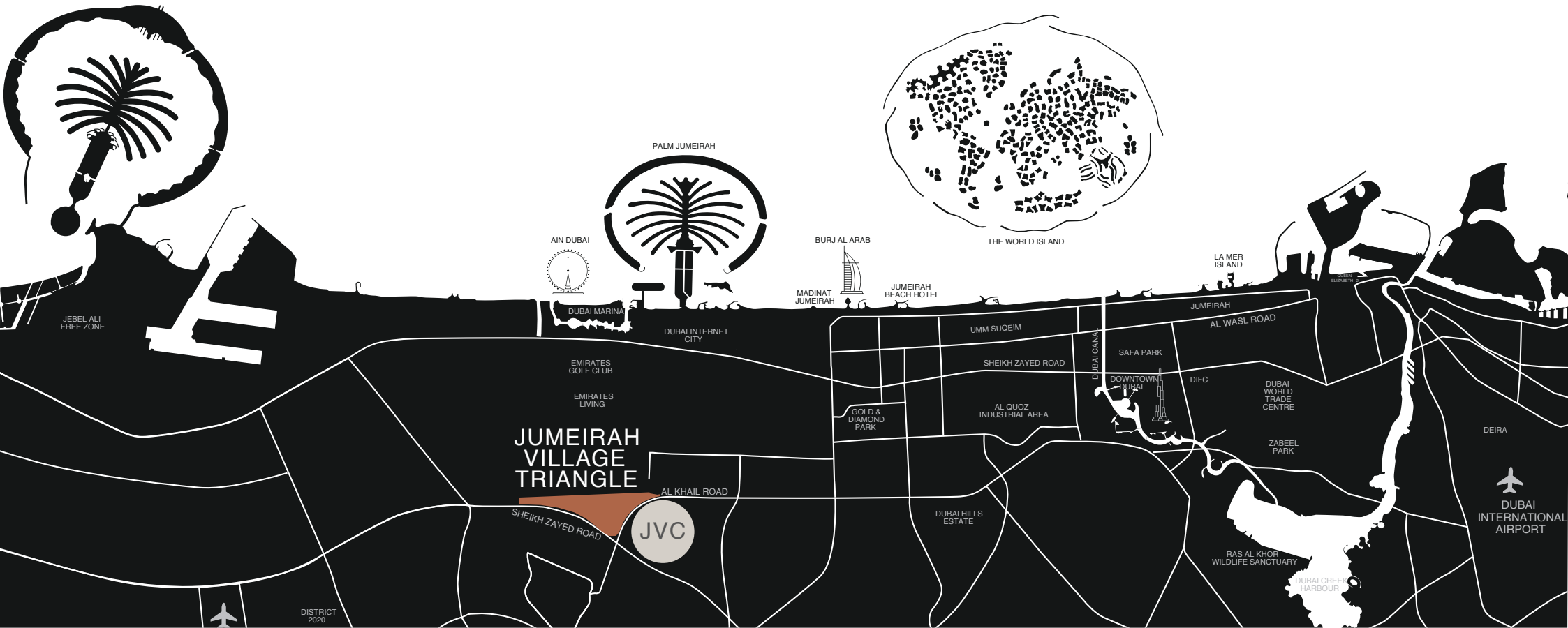
**5 minutes**  
Al Khail Avenue Mall

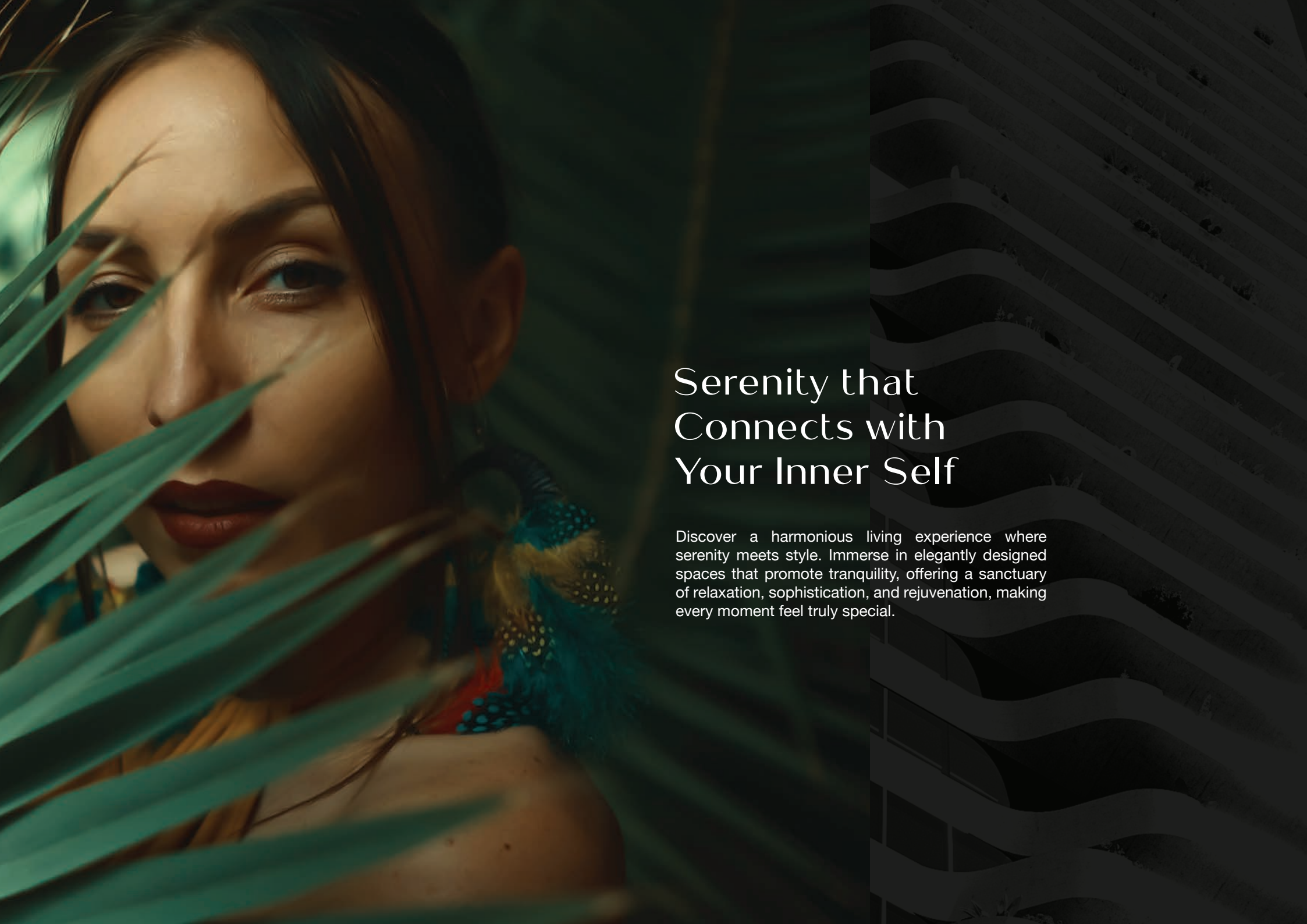


**14 minutes**  
Jumeirah Golf Estate



**10 minutes**  
City Centre Me'aisem





## Serenity that Connects with Your Inner Self

Discover a harmonious living experience where serenity meets style. Immerse in elegantly designed spaces that promote tranquility, offering a sanctuary of relaxation, sophistication, and rejuvenation, making every moment feel truly special.















# Step Into the Exclusivity of Ultra- Luxury Premium Living

A rare collection of ultra-luxury residences, limited in number, each opening to expansive terraces and private decks. Overlooking panoramic city skylines and serene green spaces, every unit is a sanctuary of elevated living—crafted for those who desire unmatched privacy, space, and a view that truly inspires.











Immerse  
Yourself In Pure  
Tranquility



# Branded AMENITIES

## Ground Level Amenities



Swimming Pool



Jogging Track



BBQ Area



Cafe Lounge



Indoor Play Area



Outdoor Play Area



Green Spaces



Garden with Seating Area

## Rooftop Amenities



Health Club



Panoramic Pool



Rooftop Deck



Indoor Cinema



Changing Rooms



Rooftop Lounge



Entertainment Room



Kids Play Area

## Services & Facilities

Terms & Conditions Apply\*



24/7 Security



Concierge



In Room Dining



Smart Homes



Housekeeping



Valet Parking



Wellness Facilities





## Turn Twilight Hours into Cinematic Joy

Enjoy private screenings and immersive entertainment spaces designed to transform your evenings into unforgettable cinematic experiences.





# Elevate Your Fitness on the Rooftop

Step into a luxury health club above the city with panoramic views, where wellness, state-of-the-art fitness, and relaxation are truly elevated.



# Step Into the Exclusivity of Ultra- Luxury Premium Living

A rare collection of ultra-luxury residences, limited in number, each opening to expansive terraces and private decks. Overlooking panoramic city skylines and serene green spaces, every unit is a sanctuary of elevated living—crafted for those who desire unmatched privacy, space, and a view that truly inspires.









# Interiors That Elevate Every Moment

Step into a welcoming lobby adorned with sleek marble, walk through spacious corridors lined with artful textures and enter your luxury apartment where contemporary design whispers refined elegance.







Living Room





Bedroom









## A Symphony of Materials, Textures and Details

Experience a seamless interior flow with grace and light. From the modern kitchen masterpiece to the tranquilizing spa-like bathrooms. Enter through a statement lobby, and retreat to a lounge where every sip and conversation feels curated. This is luxury—not just lived, but deeply felt.



Cafe Lounge







Bathroom



Kitchen



# Roof Floor Plan



Disclaimer: 1. All dimensions are in metric units and measured to wall finishes. 2. All materials, dimensions, and drawings are approximate and subject to change. 3. The information provided is subject to change without prior notice at the sole discretion of the developer. 4. Actual areas may vary from the stated figures. 5. Drawings are not to scale and are for reference purposes only. 6. Images used are illustrative and may not reflect actual size, features, specifications, fittings, or furnishings. 7. The developer reserves the right to revise or alter designs, specifications, and features without liability or obligation.



# 1st Floor Plan



Disclaimer: 1. All dimensions are in metric units and measured to wall finishes. 2. All materials, dimensions, and drawings are approximate and subject to change. 3. The information provided is subject to change without prior notice at the sole discretion of the developer. 4. Actual areas may vary from the stated figures. 5. Drawings are not to scale and are for reference purposes only. 6. Images used are illustrative and may not reflect actual size, features, specifications, fittings, or furnishings. 7. The developer reserves the right to revise or alter designs, specifications, and features without liability or obligation.



# 2nd - 29th Floor Plan



◀ ABU DHABI

SHEIKH MOHAMMED BIN ZAYED ROAD

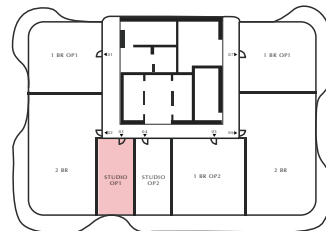
SHARJAH ▶

Disclaimer: 1. All dimensions are in metric units and measured to wall finishes. 2. All materials, dimensions, and drawings are approximate and subject to change. 3. The information provided is subject to change without prior notice at the sole discretion of the developer. 4. Actual areas may vary from the stated figures. 5. Drawings are not to scale and are for reference purposes only. 6. Images used are illustrative and may not reflect actual size, features, specifications, fittings, or furnishings. 7. The developer reserves the right to revise or alter designs, specifications, and features without liability or obligation.



## Unit 3 Studio - Option 1

Unit Area:  
32.04 m (344.88 sq.ft.)



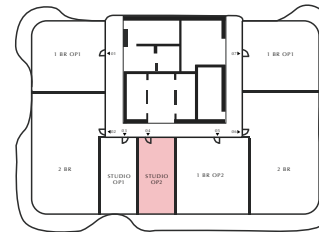
Disclaimer: 1. All dimensions are in metric units and measured to wall finishes. 2. All materials, dimensions, and drawings are approximate and subject to change. 3. The information provided is subject to change without prior notice at the sole discretion of the developer. 4. Actual areas may vary from the stated figures. 5. Drawings are not to scale and are for reference purposes only. 6. Images used are illustrative and may not reflect actual size, features, specifications, fittings, or furnishings. 7. The developer reserves the right to revise or alter designs, specifications, and features without liability or obligation.





## Unit 4 Studio - Option 2

Unit Area:  
33.55 m (361.13 sq.ft.)

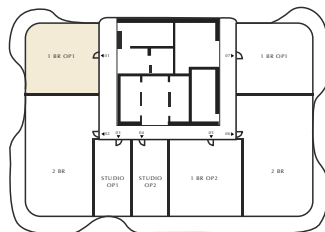


Disclaimer: 1. All dimensions are in metric units and measured to wall finishes. 2. All materials, dimensions, and drawings are approximate and subject to change. 3. The information provided is subject to change without prior notice at the sole discretion of the developer. 4. Actual areas may vary from the stated figures. 5. Drawings are not to scale and are for reference purposes only. 6. Images used are illustrative and may not reflect actual size, features, specifications, fittings, or furnishings. 7. The developer reserves the right to revise or alter designs, specifications, and features without liability or obligation.



## Unit 1 1 Bedroom - Option 1

Unit Area:  
65.73 m (707.51 sq.ft.)



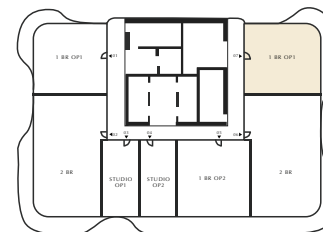
Disclaimer: 1. All dimensions are in metric units and measured to wall finishes. 2. All materials, dimensions, and drawings are approximate and subject to change. 3. The information provided is subject to change without prior notice at the sole discretion of the developer. 4. Actual areas may vary from the stated figures. 5. Drawings are not to scale and are for reference purposes only. 6. Images used are illustrative and may not reflect actual size, features, specifications, fittings, or furnishings. 7. The developer reserves the right to revise or alter designs, specifications, and features without liability or obligation.





## Unit 7 1 Bedroom - Option 1

Unit Area:  
65.73 m (707.51 sq.ft.)



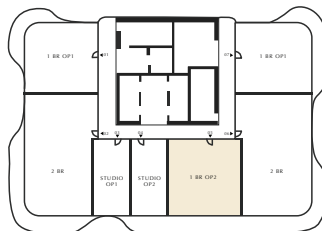
Disclaimer: 1. All dimensions are in metric units and measured to wall finishes. 2. All materials, dimensions, and drawings are approximate and subject to change. 3. The information provided is subject to change without prior notice at the sole discretion of the developer. 4. Actual areas may vary from the stated figures. 5. Drawings are not to scale and are for reference purposes only. 6. Images used are illustrative and may not reflect actual size, features, specifications, fittings, or furnishings. 7. The developer reserves the right to revise or alter designs, specifications, and features without liability or obligation.



## Unit 5

### 1 Bedroom - Option 2

Unit Area:  
67.68 m (728.50 sq.ft.)



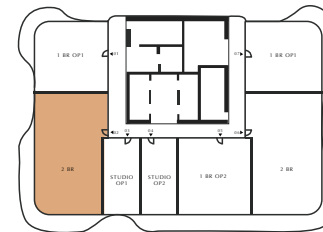
Disclaimer: 1. All dimensions are in metric units and measured to wall finishes. 2. All materials, dimensions, and drawings are approximate and subject to change. 3. The information provided is subject to change without prior notice at the sole discretion of the developer. 4. Actual areas may vary from the stated figures. 5. Drawings are not to scale and are for reference purposes only. 6. Images used are illustrative and may not reflect actual size, features, specifications, fittings, or furnishings. 7. The developer reserves the right to revise or alter designs, specifications, and features without liability or obligation.





## Unit 2 2 Bedroom

Unit Area:  
107.99 m (1162.39 sq.ft.)

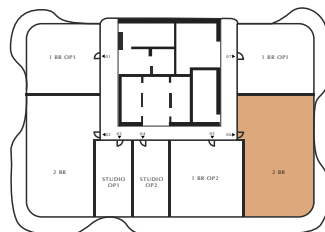


Disclaimer: 1. All dimensions are in metric units and measured to wall finishes. 2. All materials, dimensions, and drawings are approximate and subject to change. 3. The information provided is subject to change without prior notice at the sole discretion of the developer. 4. Actual areas may vary from the stated figures. 5. Drawings are not to scale and are for reference purposes only. 6. Images used are illustrative and may not reflect actual size, features, specifications, fittings, or furnishings. 7. The developer reserves the right to revise or alter designs, specifications, and features without liability or obligation.



## Unit 6 2 Bedroom

Unit Area:  
107.99 m (1162.39 sq.ft.)



Disclaimer: 1. All dimensions are in metric units and measured to wall finishes. 2. All materials, dimensions, and drawings are approximate and subject to change. 3. The information provided is subject to change without prior notice at the sole discretion of the developer. 4. Actual areas may vary from the stated figures. 5. Drawings are not to scale and are for reference purposes only. 6. Images used are illustrative and may not reflect actual size, features, specifications, fittings, or furnishings. 7. The developer reserves the right to revise or alter designs, specifications, and features without liability or obligation.

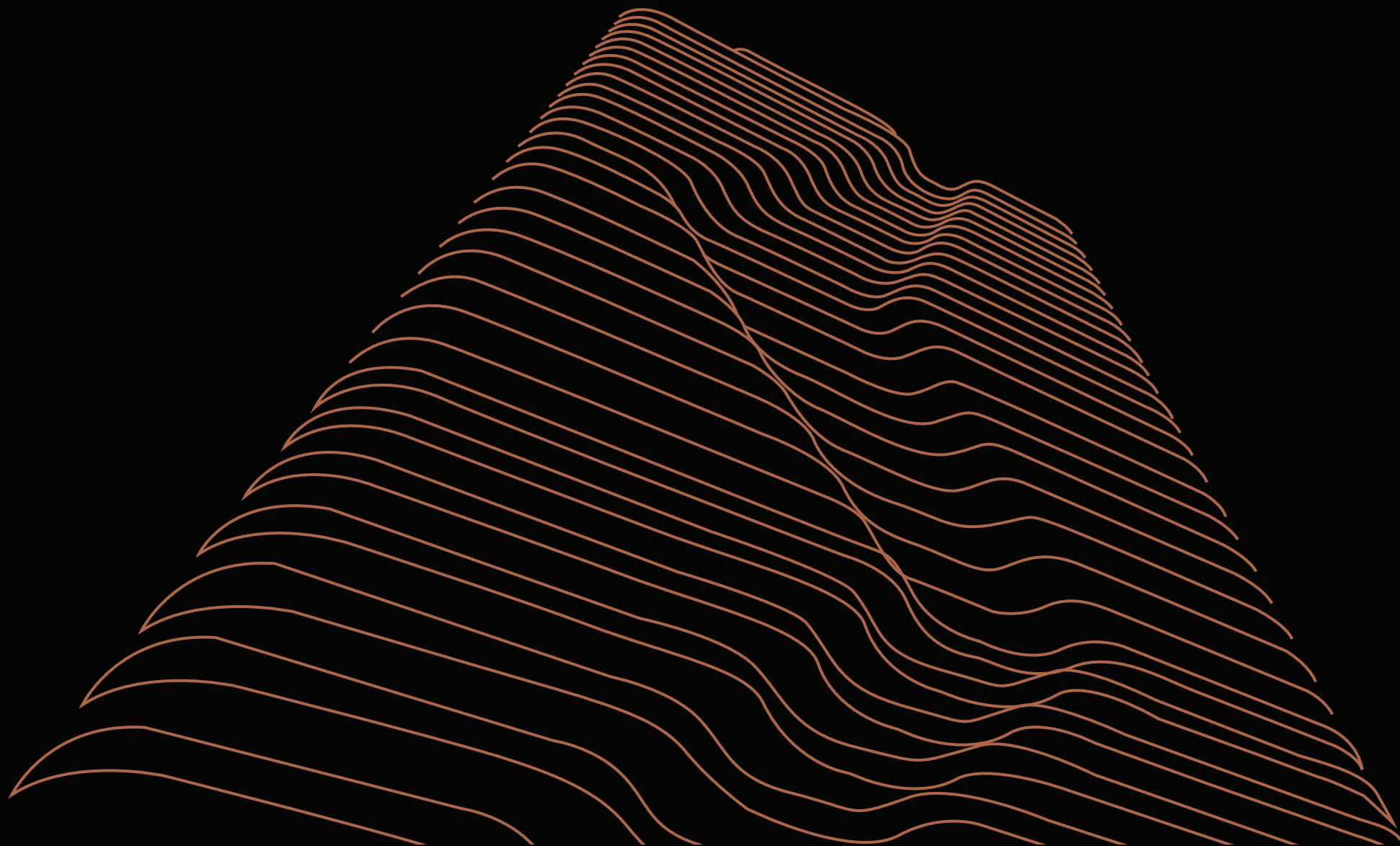














**EMIRATES  
PROPERTIES**  
GROUP

Dubai Sales Office:  
Office 1506 & 1507, Sidra Tower, Al Sufouh 1  
Sheikh Zayed Road, Dubai, UAE  
T: +971 4 776 0000

Ajman Head Office:  
1st floor, R holding Building  
Al Rashidiya 3, Ajman, UAE  
T: +971 6 707 3888

 [epgroup.ae](http://epgroup.ae)  
 [info@epgroup.ae](mailto:info@epgroup.ae)

