

# SUNSET BAY

AT DUBAI ISLANDS

IMTIAZ



# YOUR GATEWAY TO *ISLAND* *LIVING*

AT DUBAI ISLANDS

Beyond the gates, a life  
framed by pristine  
shores and effortless  
elegance awaits.







DUBAI ISLANDS



An aerial photograph of a large, artificial island in Dubai, United Arab Emirates. The island is densely packed with greenery, including palm trees and other tropical plants. It features a winding road network, several bodies of water (lagoons or canals) that create a complex, organic shape, and numerous buildings, likely residential or commercial. The island is surrounded by the deep blue waters of the Persian Gulf. In the top left corner, a portion of the mainland is visible, showing a grid-like urban layout and some industrial or infrastructure areas. The overall scene conveys a sense of a planned, luxurious, and eco-friendly living environment.

# EXPERIENCE *DUBAI ISLANDS*

An island vision brought to life, where  
thoughtful living meets the calm  
embrace of the sea.



# TIMELESS COASTAL *HARMONY*

Set across serene waters, Dubai Islands is a coastal sanctuary seamlessly connected to the city's vibrant pulse. Offering direct beach access, this visionary destination harmonizes seaside tranquility with urban energy. With opulent resorts, waterfront promenades, and world-class entertainment, Dubai Islands promises a lifestyle that redefines Island living.







DUBAI CREEK HARBOR

DOWNTOWN DUBAI

DUBAI INTERNATIONAL AIRPORT

PORT RASHID

ISLAND A

ISLAND D

ISLAND B

ISLAND E

ISLAND C

Dubai Islands represents an innovative development in line with the Dubai 2040 Urban Master Plan, focusing on crafting sustainable communities that bolster connectivity, tourism, and quality of life. This initiative also seeks to drive economic development and uphold environmental protection.





SERENE WHISPERS





SUNSET  
BAY



# LOCATION OVERVIEW

Infinity Bridge:	5 min
Waterfront Market:	5 min
Nearest Metro Station:	8 min
Al Mamzar Beach:	8 min
Dubai International Airport:	12 min
The Elite English School:	12 min
Cruise Terminal:	15 min
La Mer Beach:	15 min
Jumeirah Public Beach:	20 min
Dubai Frame:	20 min
Downtown Dubai:	24 min
Dubai Mall:	24 min





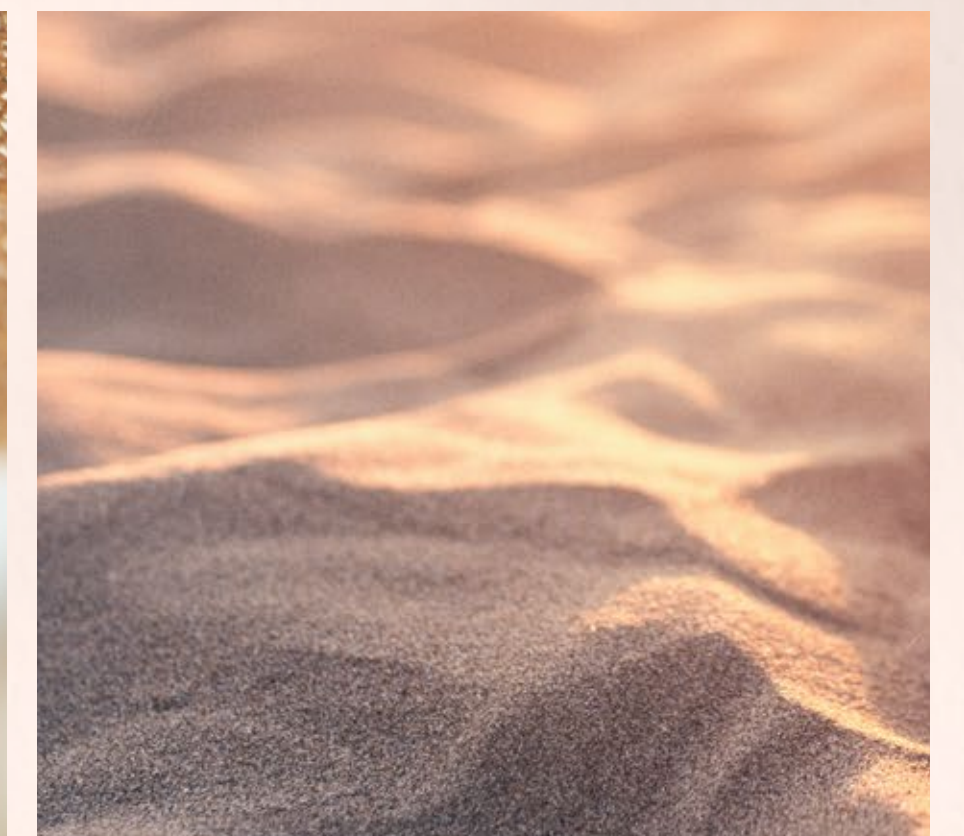
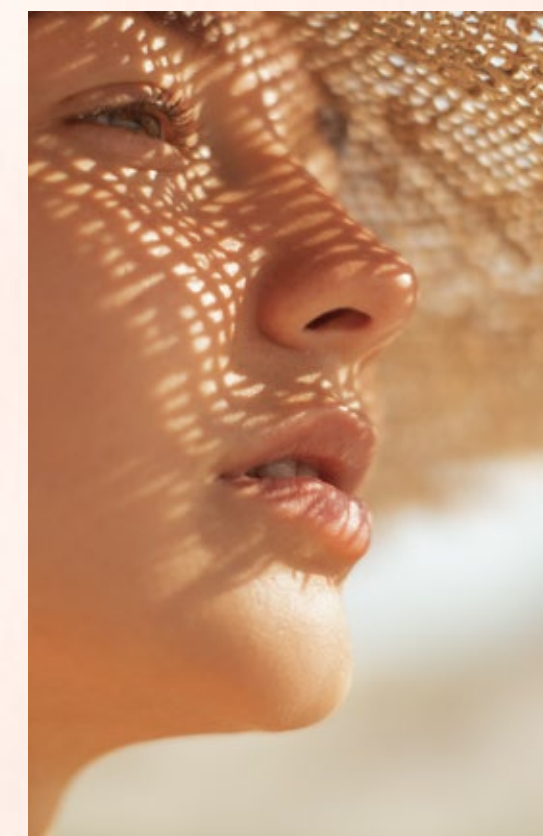






# BEACH ACCESS

21 kilometers of pristine coastline, certified with Blue Flag Global Accreditation.





# MARINAS

9 exceptional marinas, including  
6 on Island A, offering seamless  
access to endless sea adventures.

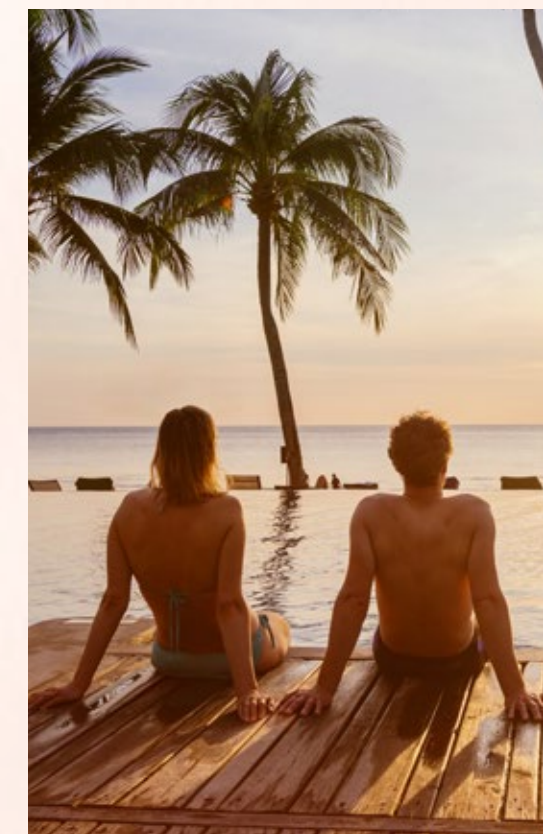






# HOTELS & *RESORTS*

Unwind along beaches with  
86 world-class hotels and resorts  
that define comfort.





# SHOPPING *MALL*

The grand mall on Island A offers an exciting blend of retail and entertainment, elevating your shopping experience.

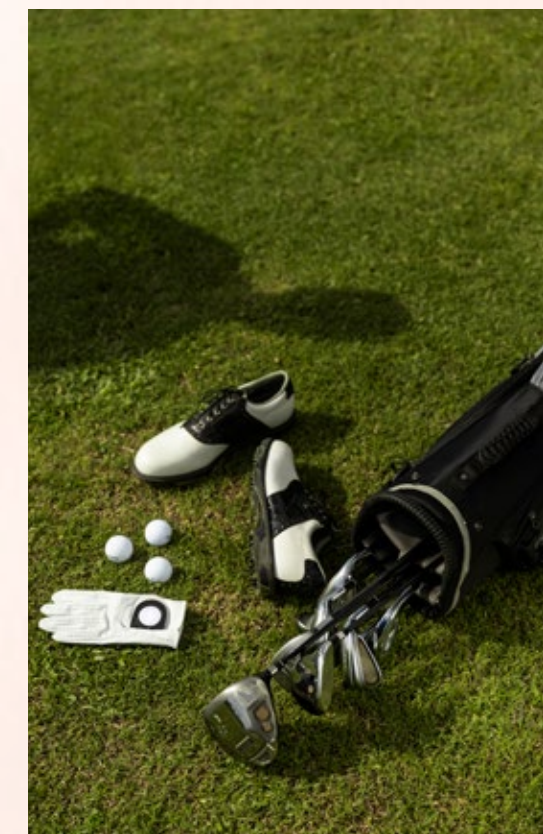






# GOLF *COURSES*

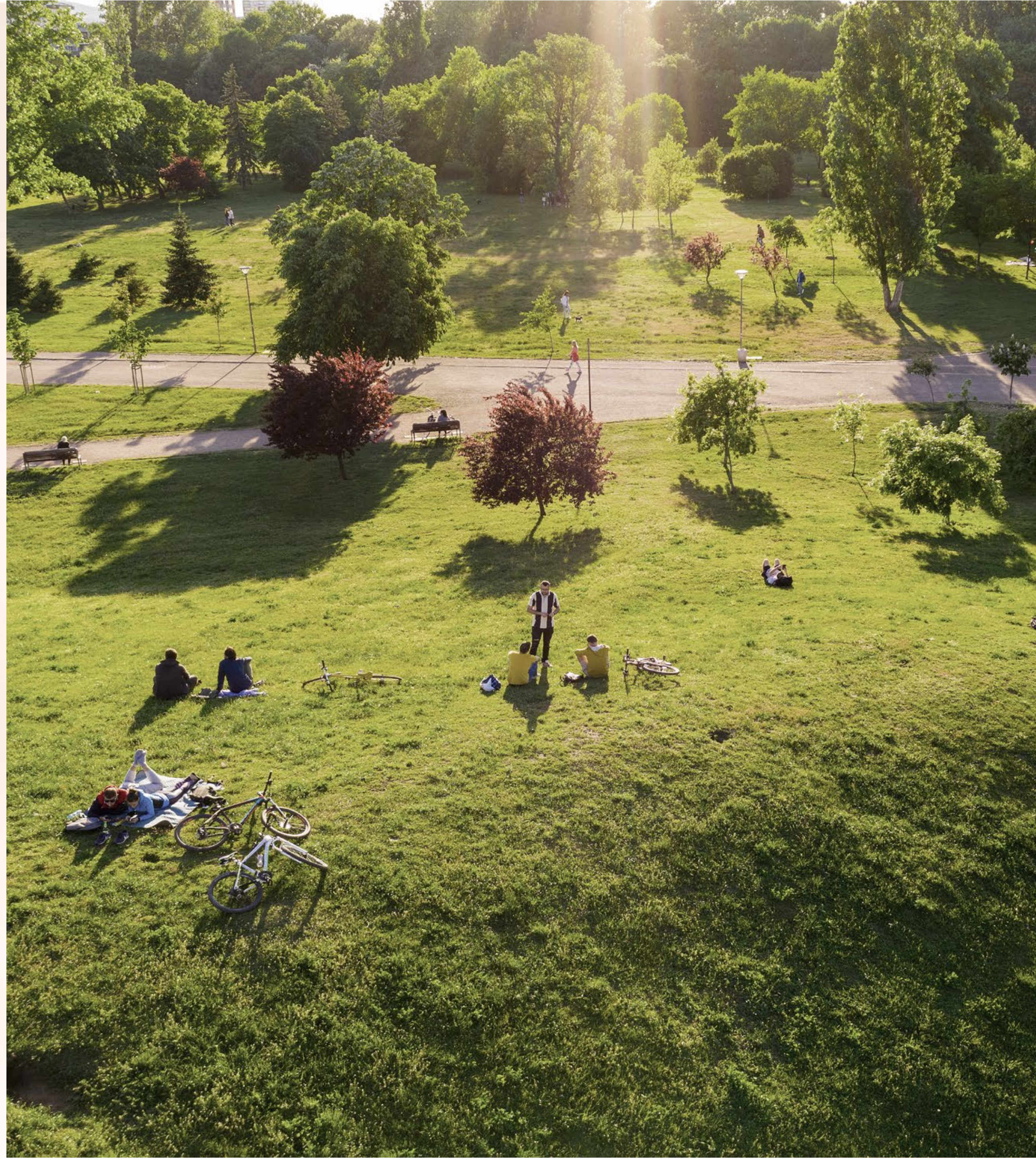
18-hole and 9-hole courses nearby,  
offer incredible golfing experience  
with spectacular views.





# PARKS & *OPEN SPACES*

1.98 million square meters of picturesque landscapes, thoughtfully designed for serenity, connection, and unforgettable moments.







# IDYLLIC *LOCATION*



Breathtaking  
Sunset Views



9 Marinas



21 km  
Beachfront



86 Resorts &  
Hotels



2 Golf Courses







# STUPENDOUS *VIEWS*

Every space is designed to capture the beauty of Dubai Islands, offering serene vistas and a rare living experience.



Seamless finishes and timeless materials embody elegance, fusing modern design with enduring craftsmanship.

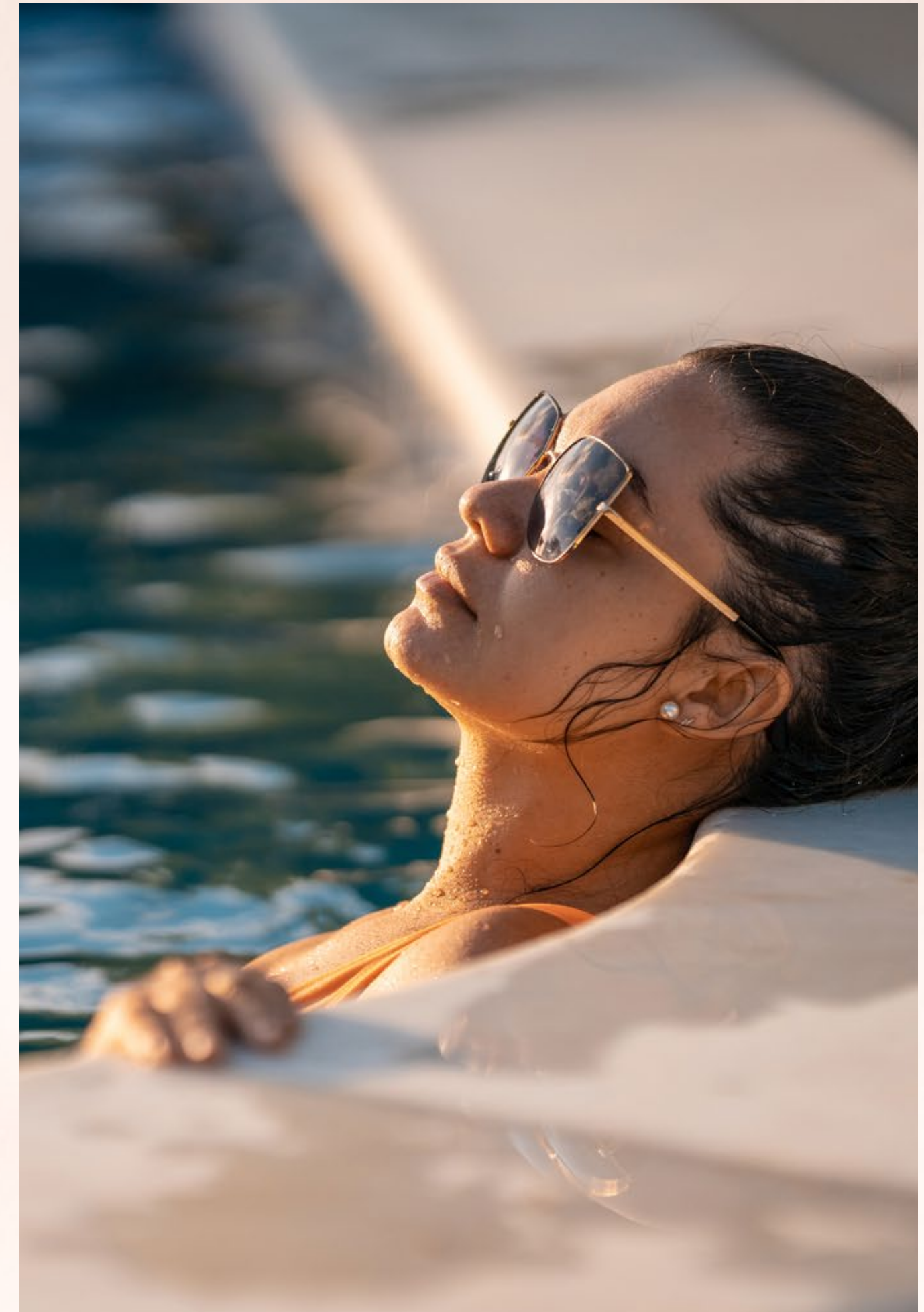






# ROOFTOP *INFINITY* POOL

Live unforgettable moments by the ever-flowing rooftop infinity pool, a sanctuary designed for ultimate relaxation and timeless elegance.

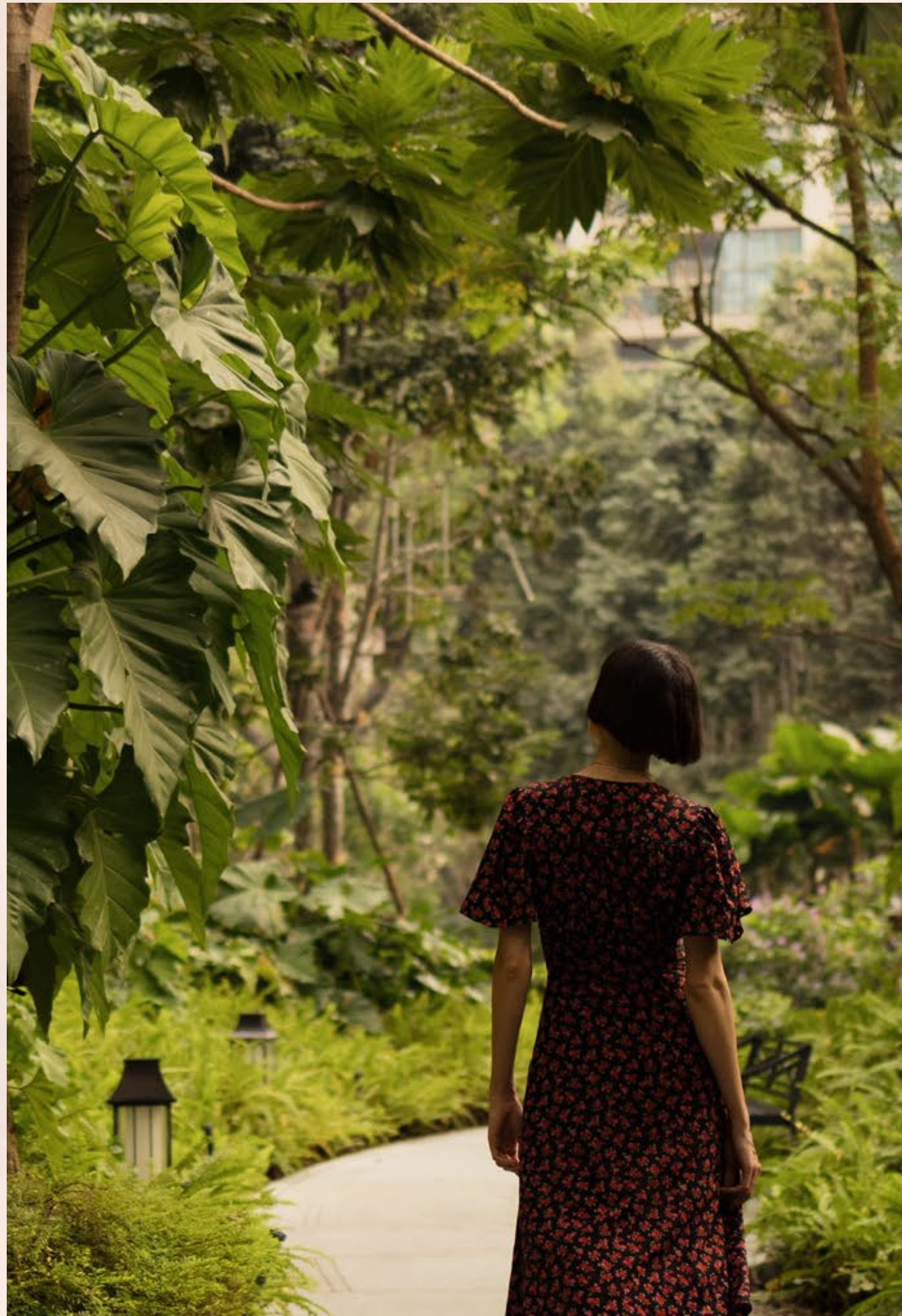


Sunlit serenity, private moments,  
and a poolside escape like no other.









Immerse yourself in lush greenery and serene pathways,  
seamlessly blending nature and modern living.

# URBAN *WOODS*

A retreat where every moment feels  
connected to the nature.







# WORLD-CLASS *AMENITIES*

Outdoor Dining / Bbq Area

Seating Zone

Meeting Area

Outdoor Cinema

Water Lounges

Outdoor Shower

Floating Islands

Jacuzzi

Sunken Lounge

Kids' Playground

Ping Pong Table

Outdoor Yoga

Outdoor Dining / BBQ Area

Private Terrace

Meeting Area

Water Feature

Ping Pong Table

Clubhouse

Gym









SUNSETTIDAY

INITIAZ

LOBBY



# GRACEFUL *WELCOME*

Step into a foyer that redefines timeless elegance. With its extraordinary design and artful details, it serves as a graceful prelude to the exceptional spaces beyond.



The sitting lounge invites you to unwind in utmost comfort with a harmonious balance of style and repose, perfect for moments of reflection or connection.





BLISSFUL DAWNS





LIVING ROOM



# GOURMET *HAVEN*

Dining space designed for refined living, seamlessly blending modern functionality with timeless design aesthetics.



Illuminated spaces for seamless organization and bold display.







# BEDROOM

Unwind with placid ocean views, opulent interiors, and mellow textures, creating an inviting space for pure relaxation.



A sleek wardrobe offering refined design, ample storage, and effortless organization.





IMTIAZ  
DEVELOPMENTS

CLUB HOUSE



# LIVING SPACE

A sunlit haven where sea breezes whisper, books and laughter mingle, and every corner invites quiet or joy.



An inviting space where indoor games bring joy and connection, blending style with the spirit of togetherness.





FITNESS  
IS NOT A DESTINATION  
IT IS A WAY OF LIFE



# MODERN *GYMNASIUM*

A meticulously designed fitness space blending cutting-edge equipment with panoramic views, inspiring a balance of strength and composure in every workout.



Step into a dedicated strength and training zone equipped with premium gear, tailored to energize and elevate your fitness journey.



# UNIT TYPES *AND SIZES*

## APARTMENTS

1 Bedroom - 32 Units

2 Bedrooms - 32 Units

3 Bedroom Penthouse + Maid's Room - 2 Units

## SIZE RANGE

From 950 sq. ft to 1270 sq. ft.

From 1350 sq. st. to 2690 sq. ft.

From 2090 sq. ft to 2370 sq. ft





# CONFIGURATION



G + 2 PODIUM CAR PARKING + 8 RESIDENTIAL FLOORS + RF RESIDENTIAL



# IMTIAZ

A JOURNEY TO PERFECTION

[imtiaz.ae](http://imtiaz.ae) | [info@imtiaz.ae](mailto:info@imtiaz.ae)

800 IMTIAZ (468429)