



JUMEIRAH
GOLF ESTATES

PINEWOOD VILLAGE FACTSHEET

wasl



JUMEIRAH
GOLF ESTATES

At Jumeirah Golf Estates, there is an exceptional district to suit everyone, a special place to call home and a place to thrive. Whether starting out on life's great adventure, raising a family or enjoying a new chapter of resort-style living, the districts are designed to offer a quality of life.

- 1. Central Park
- 2. Pinewood Village
- 3. Town Centre
- 4. Golf District
- 5. Equestrian Village
- 6. Transit Oriented Development



ALL ESTATE HOMES UNIT TYPES

Estate Home types

- 3 Bed Mid Units
- 4 Bed Mid Units
- 4 Bed Corner Units



Estate Homes Configuration

247 Total Estate Homes

71 units of 3 bedroom Estate Homes

120 units of 4 bedroom Estate Homes

56 units of 4 bedroom corner Estate Homes

The 3 Bedroom and 4 Bedroom Estate Homes feature a sky-light above the central staircase.

The 4 bedroom corner Estate Homes Features a dedicated lift, a swimming Pool and a BBQ pit and direct access to the roof with a canopy

All Estate Homes with dedicated area for outdoor seating.

Amenities:

Play Zone Area / Cycling Track / Jogging Track / Community center / Swimming Pool / School

Technical Specification:

Combination of stone cladding with paint on cement finish, laminated glass balustrade and double glass with aluminum window frames with WPC fluted cladding and WPC ceiling panel.

Cooling: VRF based ducted system

Metering: Electrical meter, Water meter & LPG meter for each villa.





Size per Estate Homes Type

3 Bedroom Villa + Maid’s room
Plot Area min. 2383.12 sq.ft. max. 3678.13 sq.ft.
Sellable Area 3438 sq.ft.

4 Bedroom Townhomes + Maid’s room
Plot Area min. 2970.19sq.ft. max. 3308.18 sq.ft.
Sellable Area 4233 sq.ft.

4 Bedroom Corner Townhomes + Maid’s room
Plot Area min. 4243.13 sq.ft. max. 7269.08 sq.ft.
Sellable Area 4659 sq.ft.

Bedrooms: 3 Bedrooms / 4 Bedrooms

Estate Homes: Ranges from G1+ / G+1+R

Interior (Summary):

Floors: Porcelain floor tile / Walls: Painted breeze.
Ceiling: Painted jazz white / Ceiling wet areas: Moisture resistant gypsum board painted white / Doors: Semi solid core with veneer finish

IT Specifications:

IP based video intercom system, FTTH/Home consolidated cabinet for each townhome, Telephones / Dates point for each townhome, CCTV System, Access control and Gate barrier.





PAYMENT PLAN

80%

During
construction

20%

On Handover

10%

On Booking

10%

Dec 2025

10%

May 2026

10%

Oct 2026

10%

Mar 2027

10%

Aug 2027

10%

Jan 2028

10%

Jun 2028

20%

Dec 2028
Estimated Handover Date











3 BEDROOM

PINEWOOD ESTATE HOMES

The 3 bedroom Pinewood Estate Homes embody a harmonious blend of sophistication and functionality. Adorned with an exquisite skylight and spacious, luminous interiors, it creates an inviting ambience that elevates the art of luxurious living.



Skylight

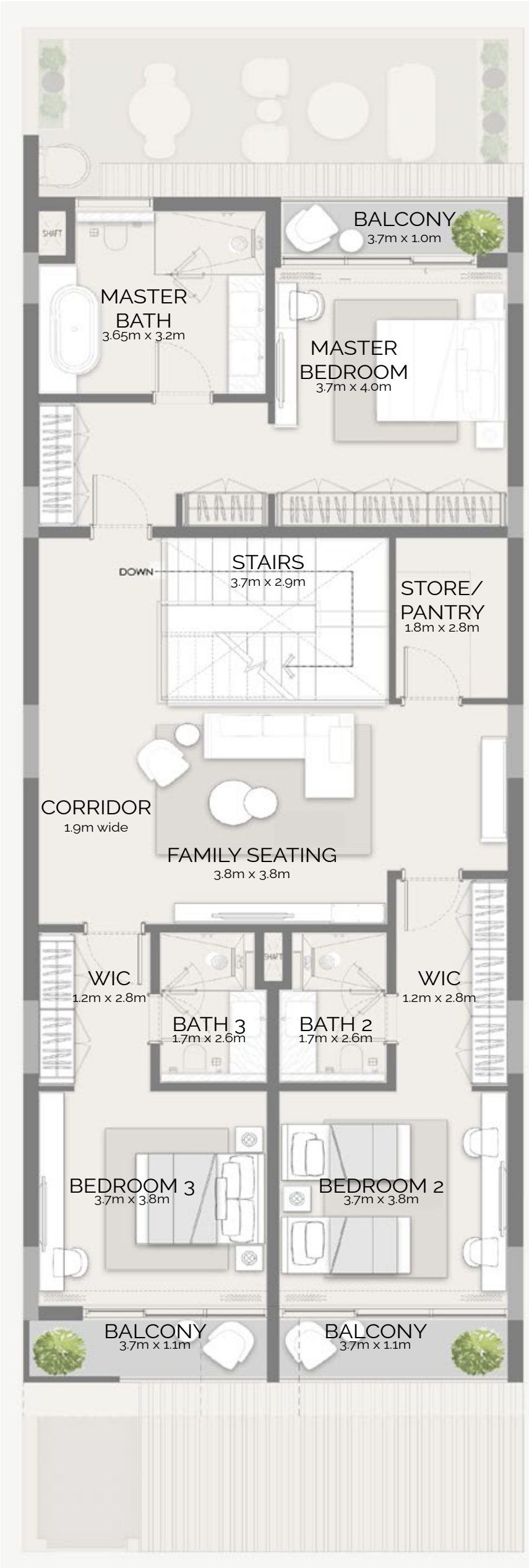
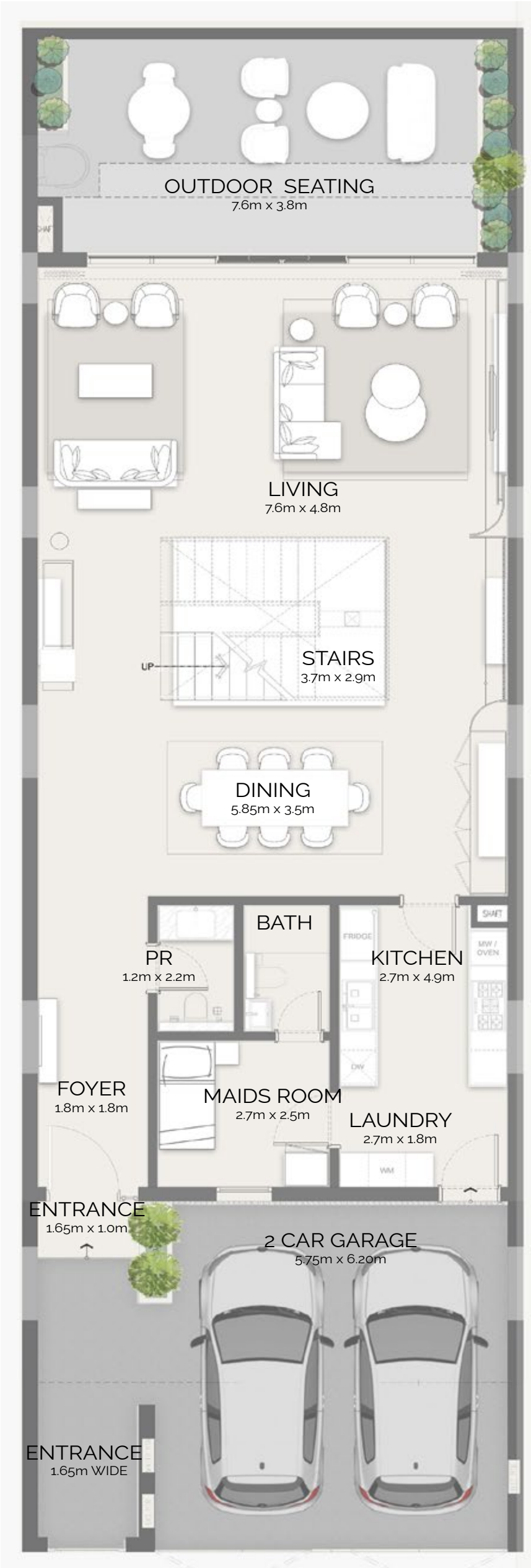


3 BEDROOM

PINEWOOD ESTATE HOMES

Plot Area	
Min. 221.43 sqm	Max. 341.71 sqm
2383.42 sqft	3678.13 sqft
Sellable Area	
319.44 sqm	
3438.42 sqft	

Keyplan



4 BEDROOM

PINEWOOD ESTATE HOMES

The 4 bedroom Pinewood Estate Homes are crafted with the same attention to detail. The exteriors are intentionally designed to showcase stunning views of the surrounding parks and lush greenery, allowing residents to fully immerse themselves in the natural beauty that surrounds their home.



Skylight





07

08

4 BEDROOM

PINEWOOD ESTATE HOMES

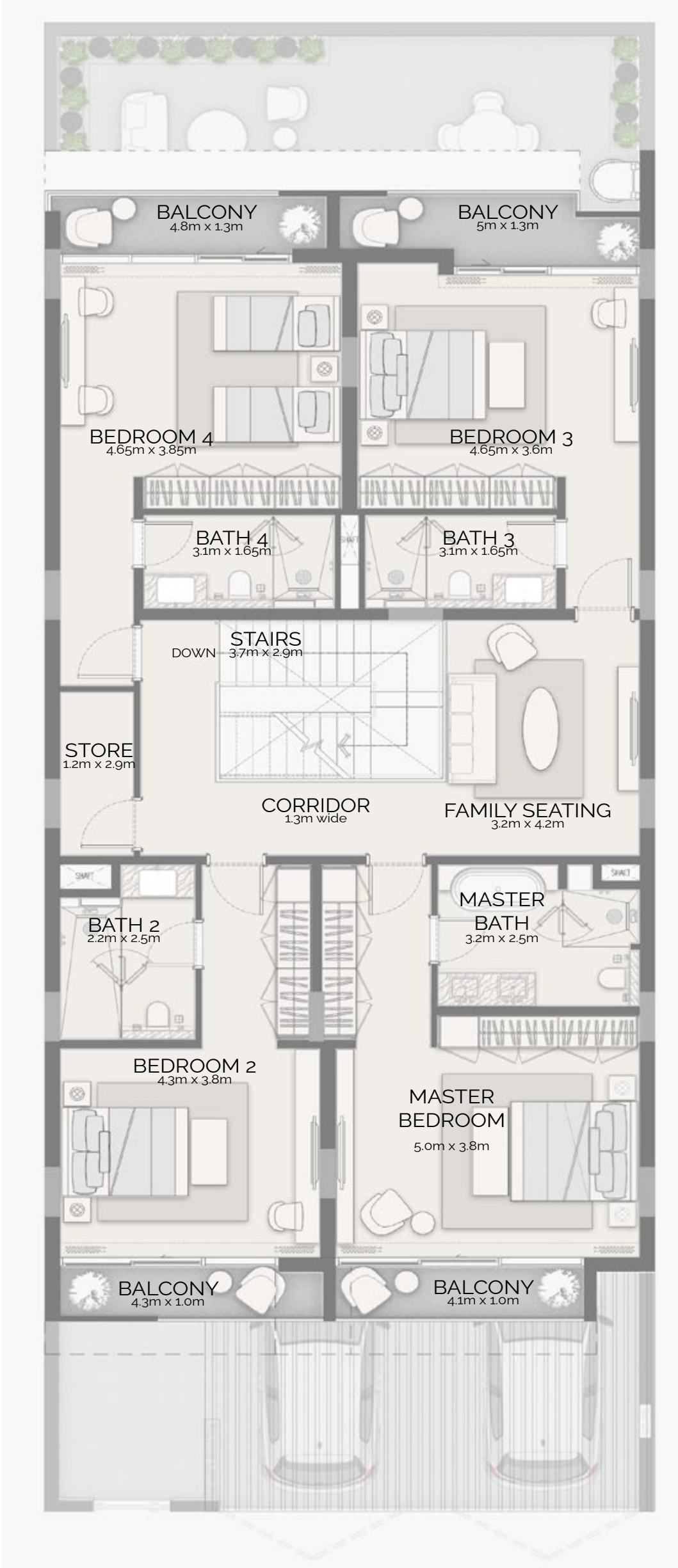
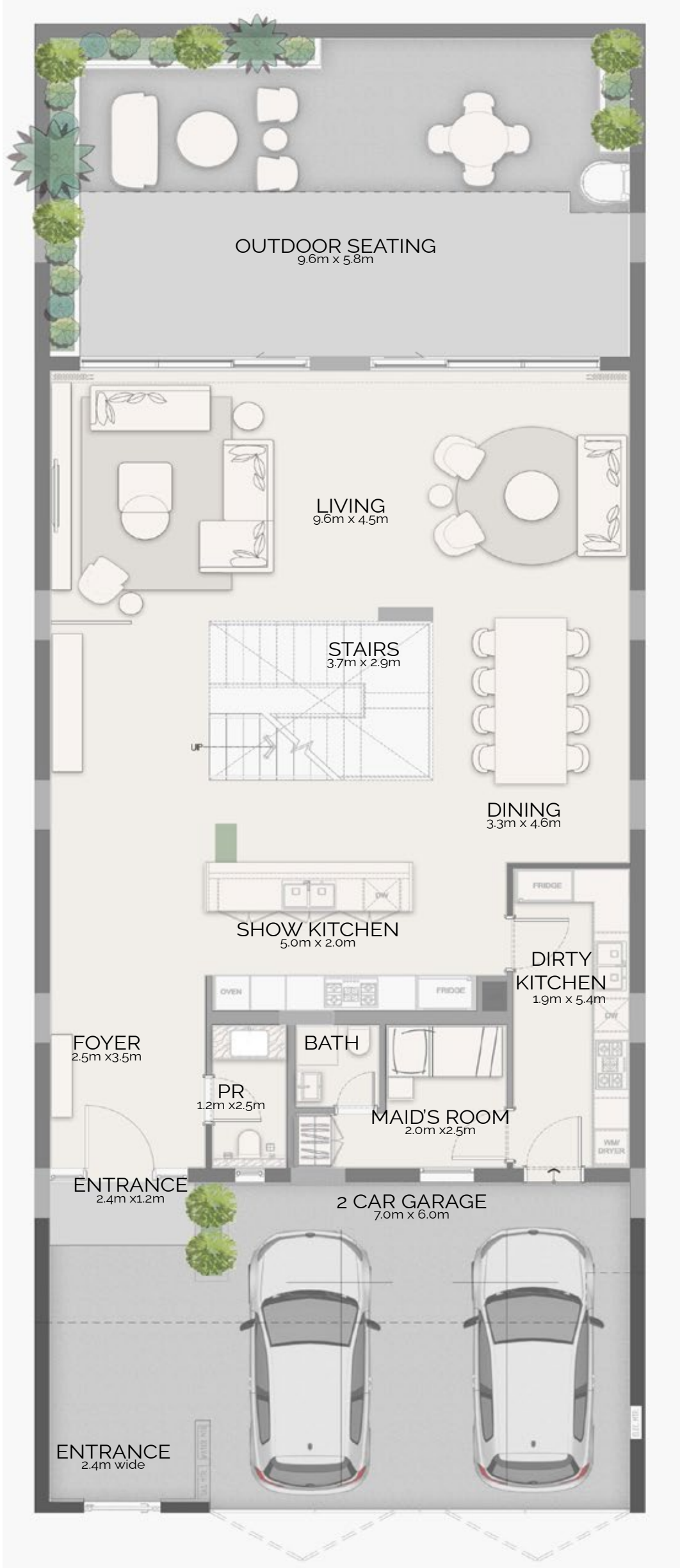
Plot Area

Min. 275.94 sqm
2970.19 sqft

Max. 307.34 sqm
3308.18 sqft

Sellable Area

393.3 sqm
4233.45 sqft





4 BEDROOM CORNER

PINEWOOD ESTATE HOMES

The stunning 4 bedroom corner Pinewood Estate Homes showcase an extraordinary architectural design, featuring elevated Estate Homes equipped with magnificent views, private pool, elevator, and rooftop access with canopy.



Magnificent view



Private Pool



Elevator



Rooftop access with canopy



4 BEDROOM CORNER

PINEWOOD ESTATE HOMES

Plot Area

Min. 394.20 sqm
4243.13 sqft

Max. 675.32 sqm
7269.08 sqft

Sellable Area

432.85 sqm
4659.16 sqft





PINEWOOD ESTATE HOMES INTERIOR



NATURAL ELEGANCE

Step into a world of refined elegance where natural, neutral elements create a serene and sophisticated ambiance. Our interiors are thoughtfully designed to blend seamlessly with the surrounding environment, featuring soft, earthy tones and luxurious materials that evoke a sense of tranquility and timeless beauty. Experience the perfect harmony of nature and luxury in every corner of our exquisite spaces, all finished to the highest standards of quality.





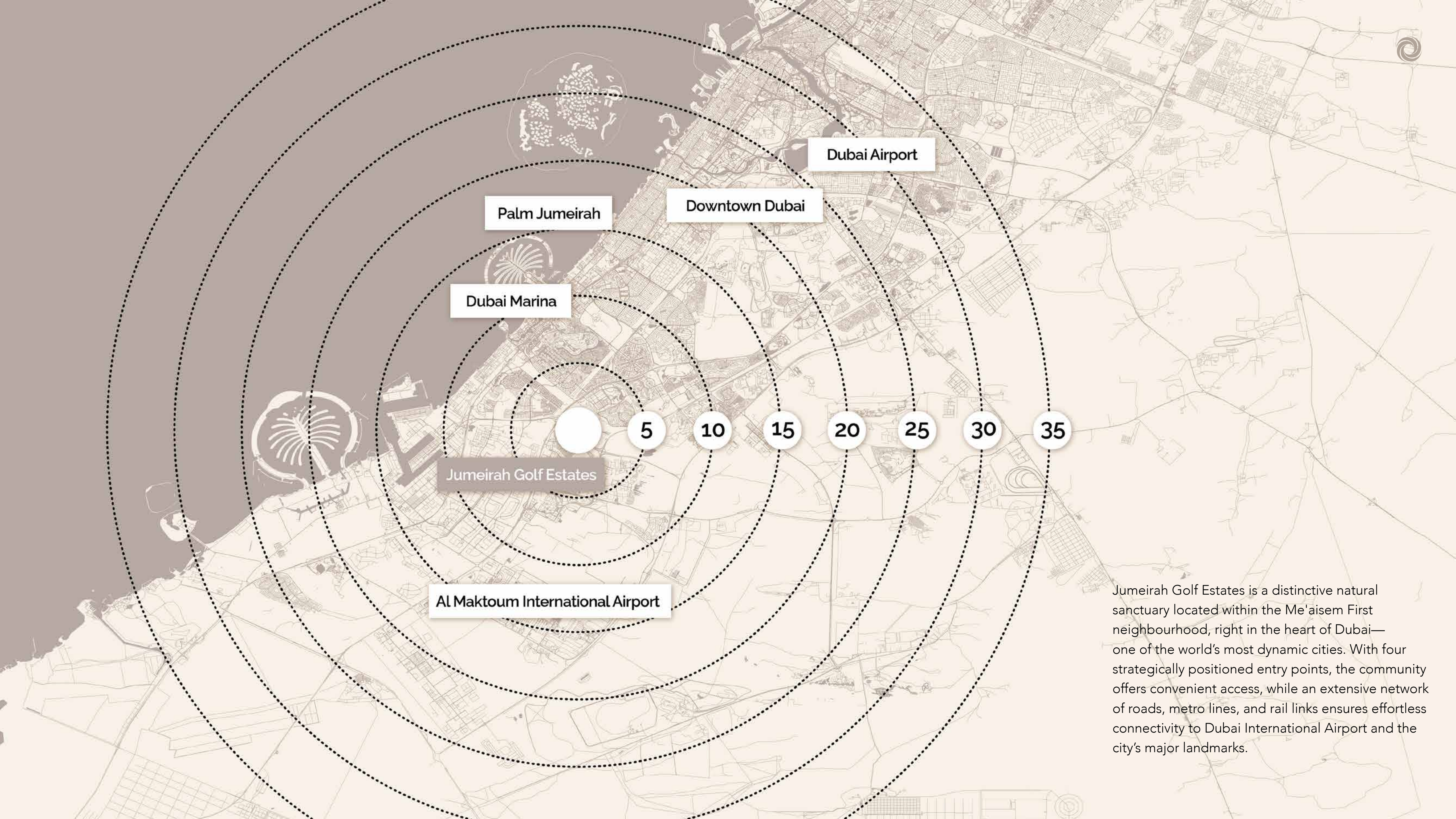








JUMEIRAH GOLF ESTATES DESTINATION



Al Maktoum International Airport

Jumeirah Golf Estates

Dubai Marina

Palm Jumeirah

Downtown Dubai

Dubai Airport

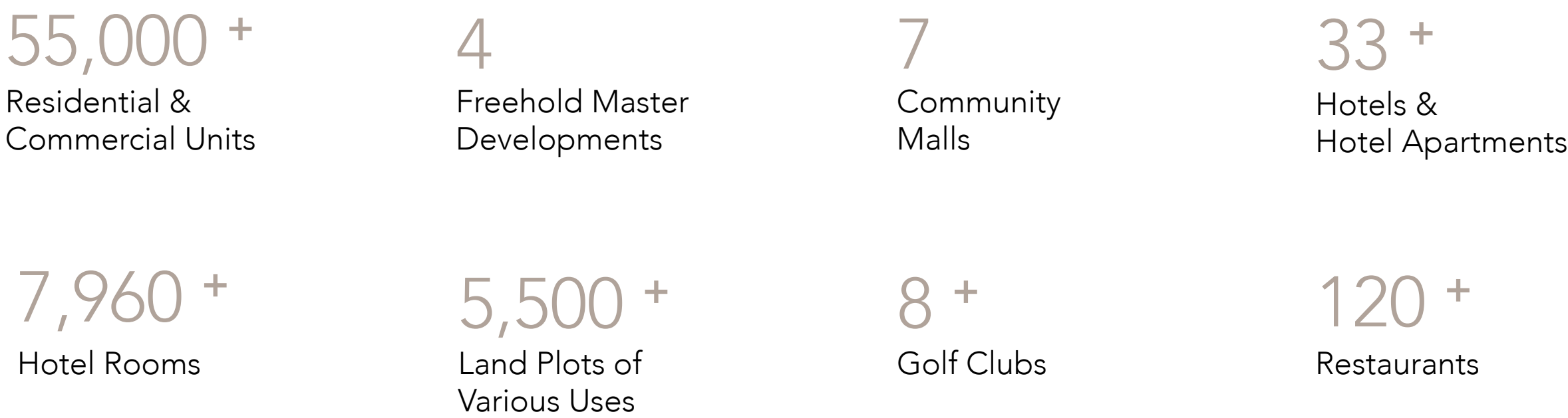
Jumeirah Golf Estates is a distinctive natural sanctuary located within the Me'aisem First neighbourhood, right in the heart of Dubai—one of the world's most dynamic cities. With four strategically positioned entry points, the community offers convenient access, while an extensive network of roads, metro lines, and rail links ensures effortless connectivity to Dubai International Airport and the city's major landmarks.



FROM DUBAI'S VERY OWN MASTER DEVELOPER.

Wasl is one of the largest real estate asset management groups in Dubai, with a mandate from the government to commercialise its strategic land. With an extensive portfolio of residential and commercial properties, industrial lands and world-class leisure destinations, Wasl is a dominant force driving Dubai's socio-economic growth and creating memorable experiences for residents and visitors alike.

Wasl In Numbers



For more information, please call 800 (WASL)
Visit our website at wasl.ae or visit Wasl Experience Centre, Dubai UAE.
18 52C St - Al Safa - Al Safa 2 - Dubai 8:00 AM to 5:00 PM, Monday - Friday





JUMEIRAH
GOLF ESTATES

wasl

Disclaimer: The renderings and visualisations contained in this brochure are provided for illustrative and marketing purposes. While the information provided is believed to be accurate and reliable at the time of printing, only the information contained in the final Sales and Purchase Agreement will have any legal effect.

jumeirahgolfestates.com