



JUMEIRAH  
GOLF ESTATES

PINEWOOD VILLAGE  
FLOOR PLANS

wasl



# PINEWOOD VILLAGE DISTRICT

The Estate Homes is part of the Pinewood Village District, blending modern architecture with sophisticated minimalism. It features sleek lines, a balanced design, and energy-efficient elements, demonstrating a clear commitment to sustainability. Both the international school and the health facility are located within this district, offering world-class education and high-quality healthcare close to home.





# ALL ESTATE HOMES UNIT TYPES

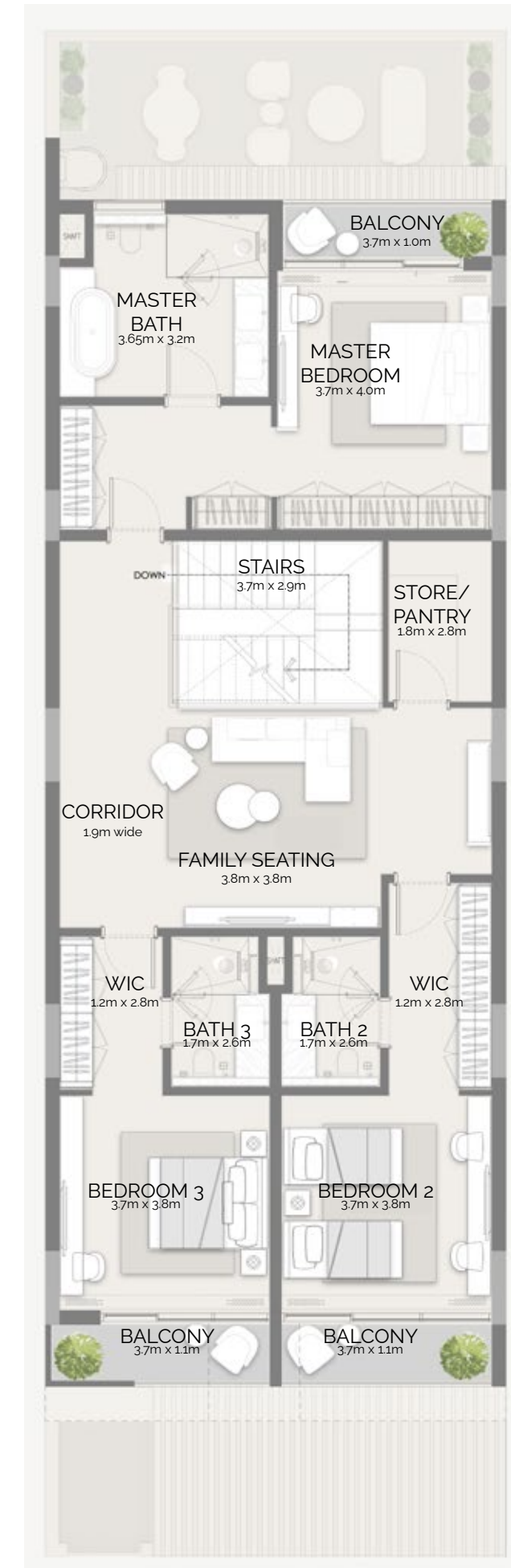
Estate Home types

- 3 Bed Mid Units
- 4 Bed Mid Units
- 4 Bed Corner Units



319.44 sqm  
3438.42 sqft

wasl



4 BEDROOM  
PINEWOOD ESTATE HOMES

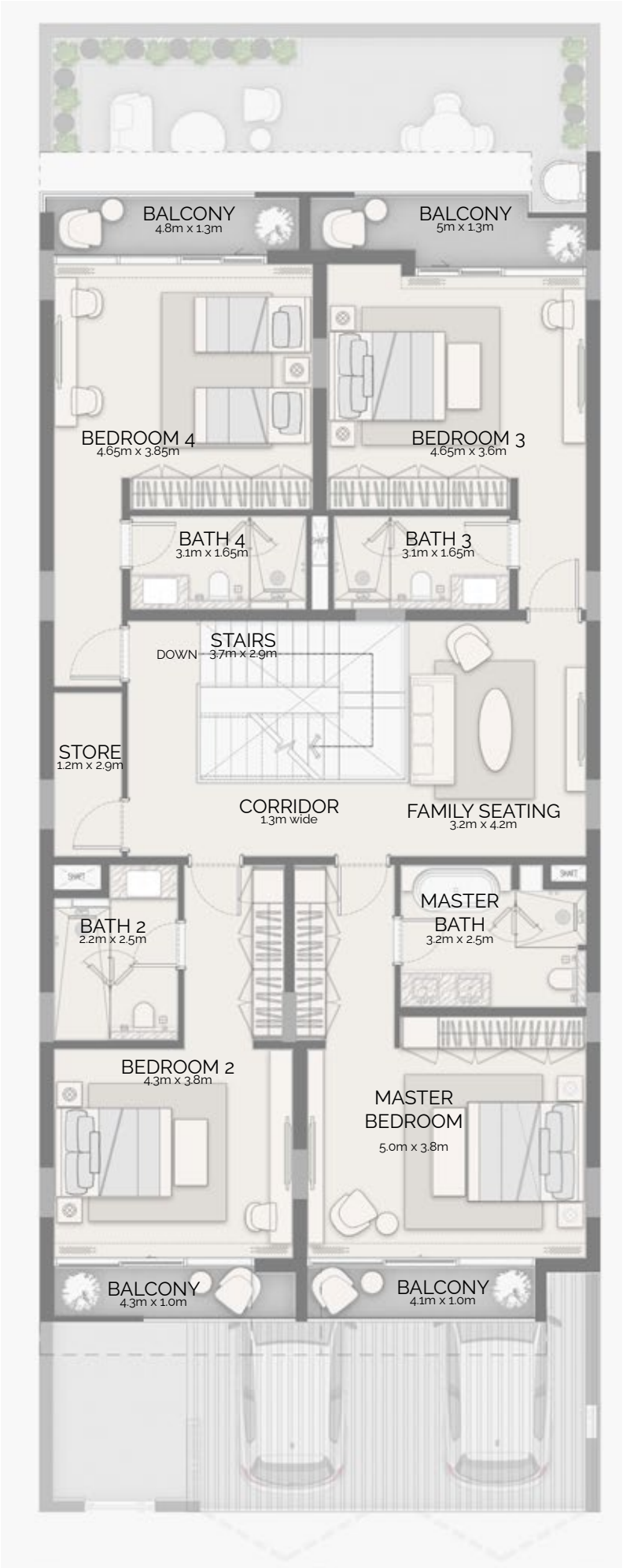


Plot Area  
Min. 275.94 sqm  
2970.19 sqft

Max. 307.34 sqm  
3308.18 sqft

Sellable Area  
393.3 sqm  
4233.45 sqft

Keyplan



Plot Area  
Min. 394.20 sqm  
4243.13 sqft

Max. 675.32 sqm  
7269.08 sqft

Sellable Area  
432.85 sqm  
4659.16 sqft



# 4 BEDROOM CORNER

## PINEWOOD ESTATE HOMES

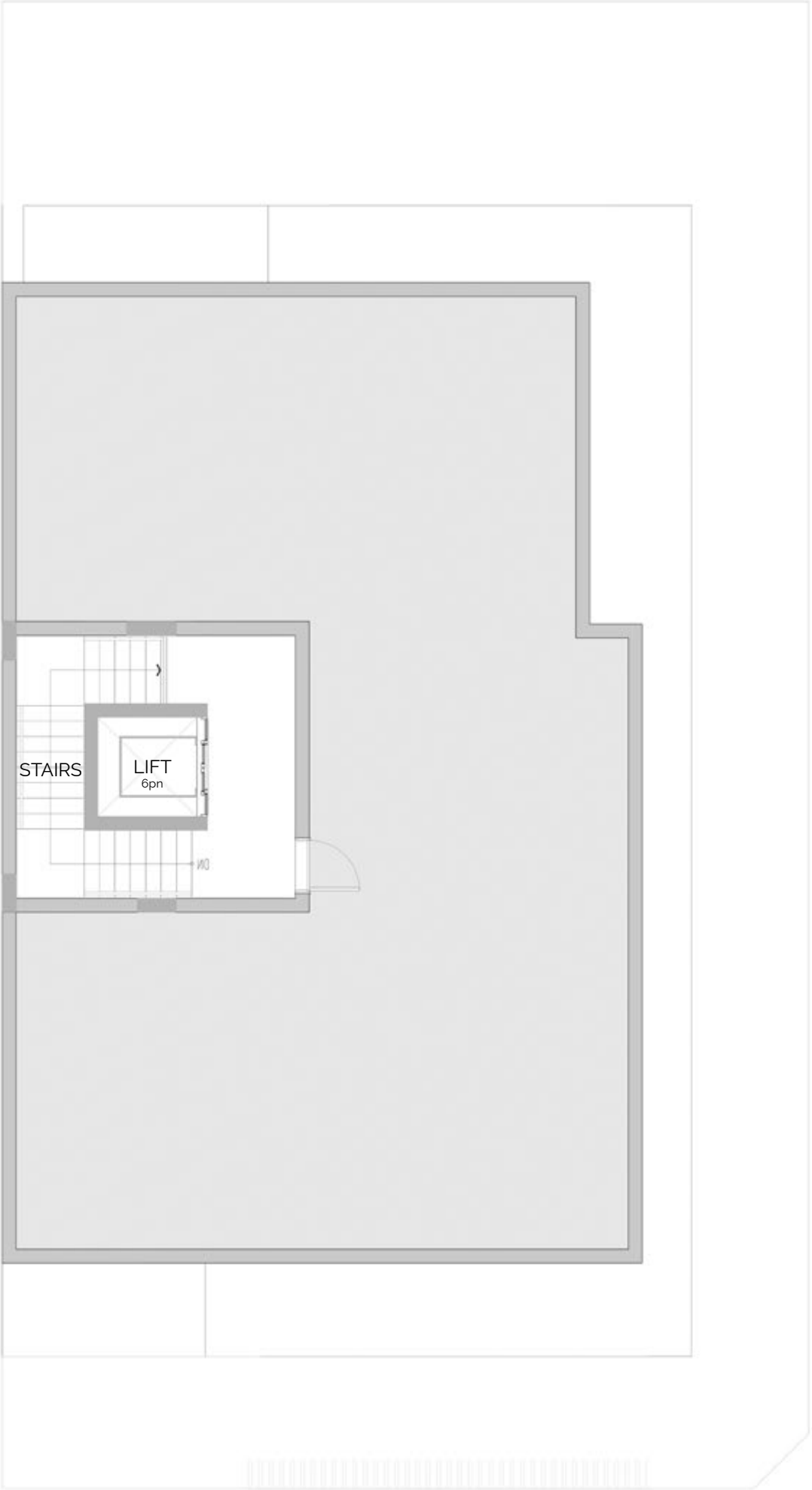


Plot Area

Min. 394.20 sqm	Max. 675.32 sqm
4243.13 sqft	7269.08 sqft

Sellable Area

360.73 sqm
3882.90 sqft





JUMEIRAH  
GOLF ESTATES

wasl

Disclaimer: The renderings and visualisations contained in this brochure are provided for illustrative and marketing purposes. While the information provided is believed to be accurate and reliable at the time of printing, only the information contained in the final Sales and Purchase Agreement will have any legal effect.

[jumeirahgolfestates.com](http://jumeirahgolfestates.com)