

E L A R I S  
*Sky*

# Object 1

Dubai Is a Gallery,  
and Buildings Are Showpieces



District 3, Jumeirah Village Triangle

**Building Description:**

B+G+5P+MF+37+R

RETAIL 1-7

**Anticipated Completion:** Q4 2028

**Anticipated Service Charge:** AED 15/Sq.Ft.

**ELARIS Sky** is a visionary residential development that captures the essence of **air, light, and life**.

Inspired by the Greek elements "Element" and "Aris" (hope/air), Elaris is more than a place to live — it is a **sanctuary of balance, tranquility, and natural harmony**.

ELARIS  
*Sky*

# Floor Plans







ELARIS  
Sky

The site plan illustrates the layout of the proposed retail building, which is situated at the intersection of Sheikh Mohammed Bin Zayed Rd (E 311) and the JVT Community. The building is a large, multi-story structure with a complex footprint. The plan identifies seven specific retail units, each with its area in square feet:

- RETAIL\_01: 1,936.44 sq.ft.
- RETAIL\_02: 1,369.83 sq.ft.
- RETAIL\_03: 1,528.60 sq.ft.
- RETAIL\_04: 1,152.39 sq.ft.
- RETAIL\_05: 1,071.02 sq.ft.
- RETAIL\_06: 1,494.47 sq.ft.
- RETAIL\_07: 1,328.49 sq.ft.

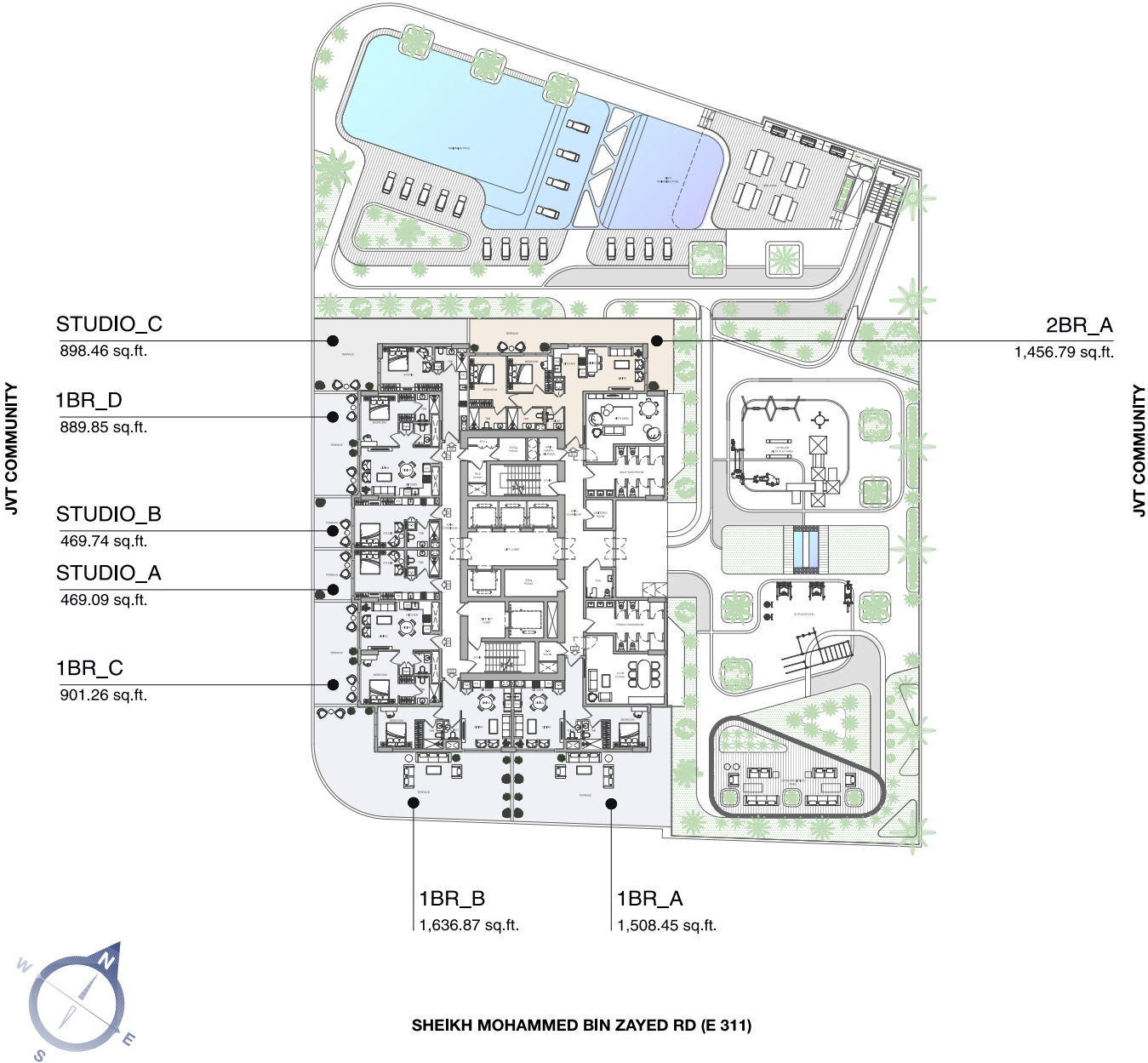
Other labeled areas include a Generator Room, Storage Room, Water Pump Room, Water Storage Room, Fuel Tank, Lift Lobby, Elevator Lobby, POC Room, LO Room, Transformer Room, Bulk Water Room, Telephone Room, and a Staircase. The plan also shows parking spaces, landscaping, and a north arrow in the bottom left corner.

Disclaimer: all pictures, plans, layouts, information, data and details included in this brochure are indicative only may change at any time up to the final "as built" status in accordance with the final designs of the project, regulatory approvals and planning permissions

FLOOR 1



JUMEIRAH ISLANDS, DUBAI MARINA



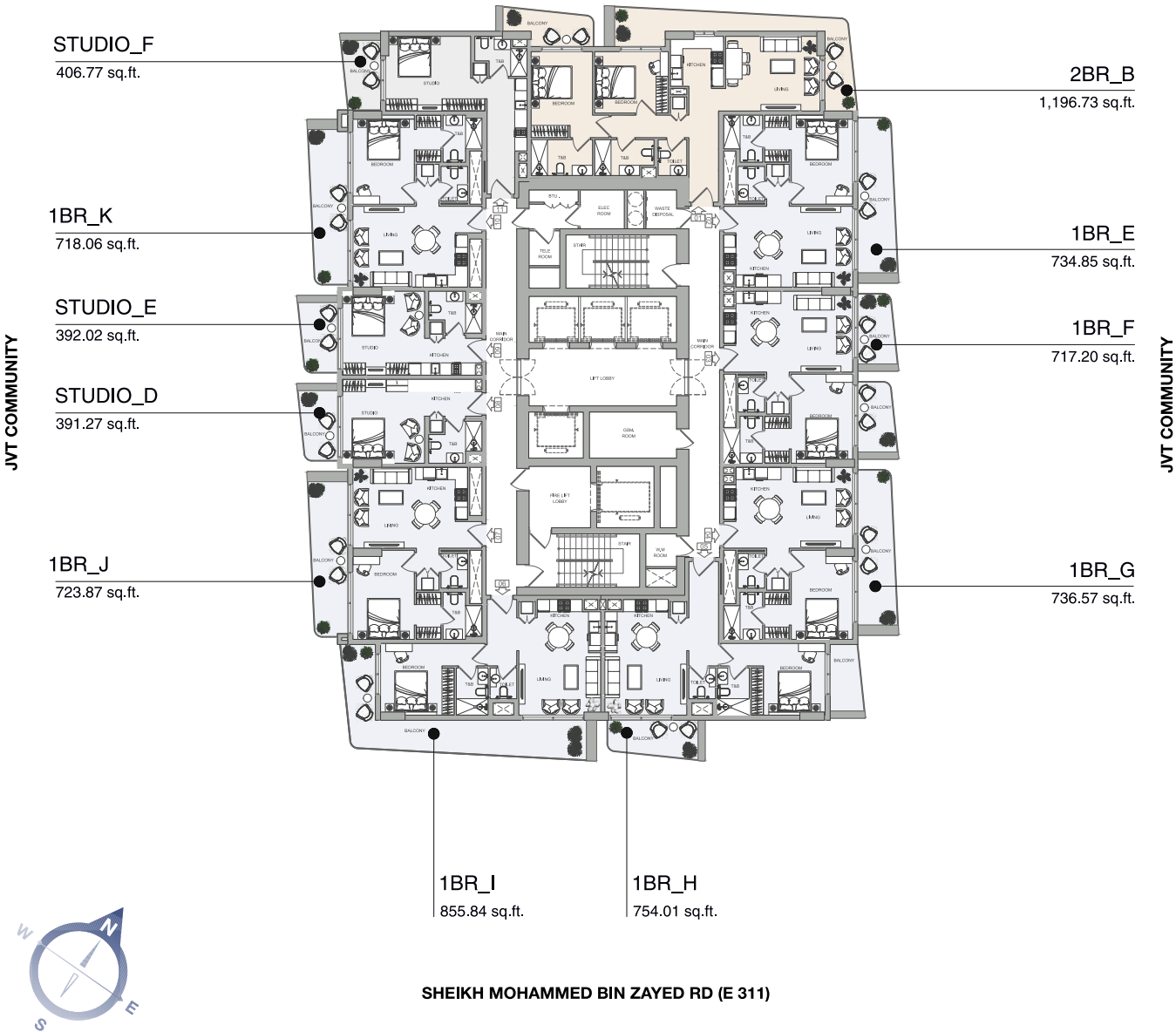
Disclaimer: all pictures, plans, layouts, information, data and details included in this brochure are indicative only may change at any time up to the final "as built" status in accordance with the final designs of the project, regulatory approvals and planning permissions

# TYPICAL 01 FLOOR PLAN

FLOOR: 2,7,12,17,25,30,35



JUMEIRAH ISLANDS, DUBAI MARINA



Disclaimer: all pictures, plans, layouts, information, data and details included in this brochure are indicative only may change at any time up to the final "as built" status in accordance with the final designs of the project, regulatory approvals and planning permissions

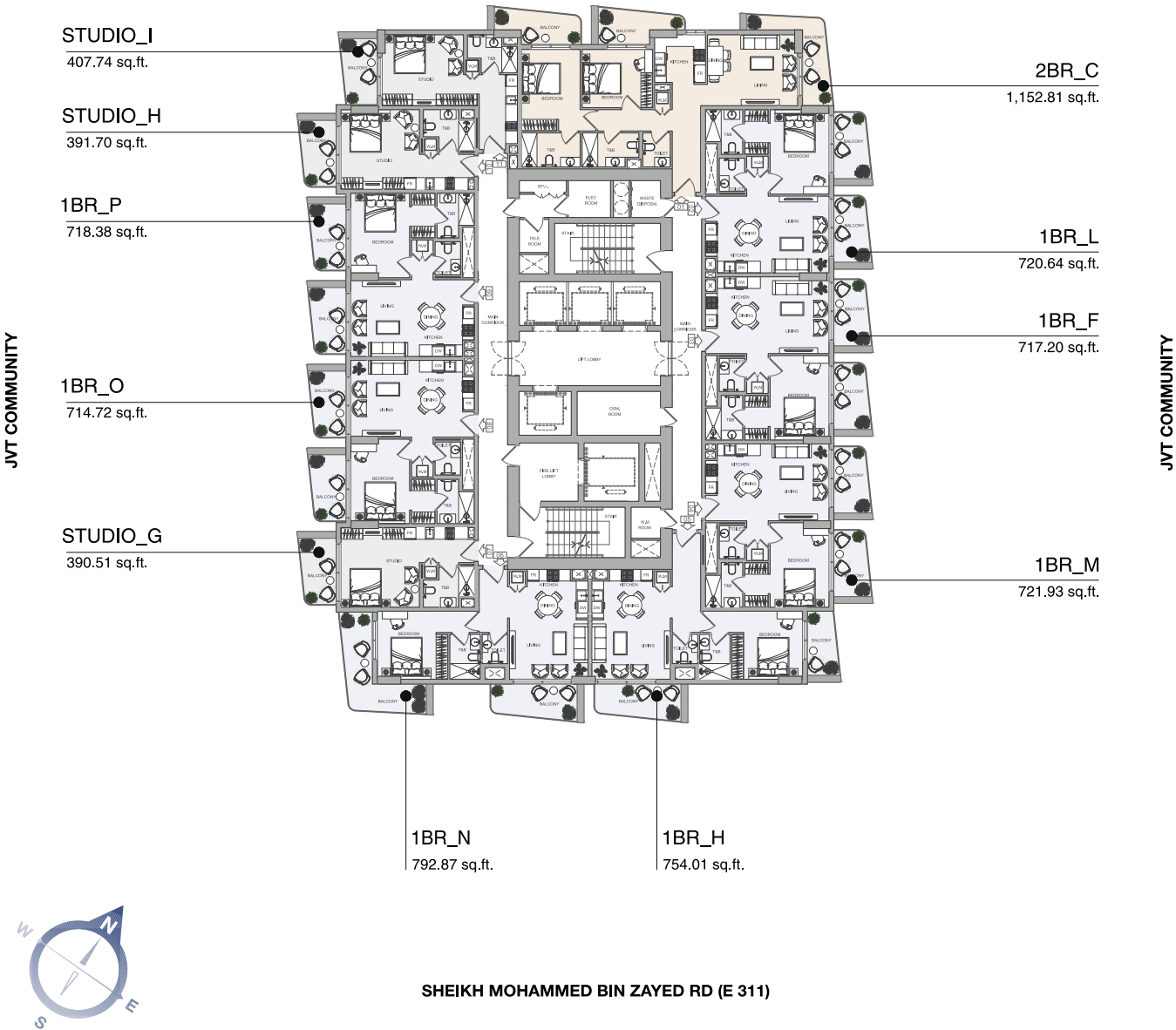


TYPICAL 02 FLOOR

FLOOR: 3,4,8,9,10,13,14,21,22,26,27,28,31,32,36,37



JUMEIRAH ISLANDS, DUBAI MARINA



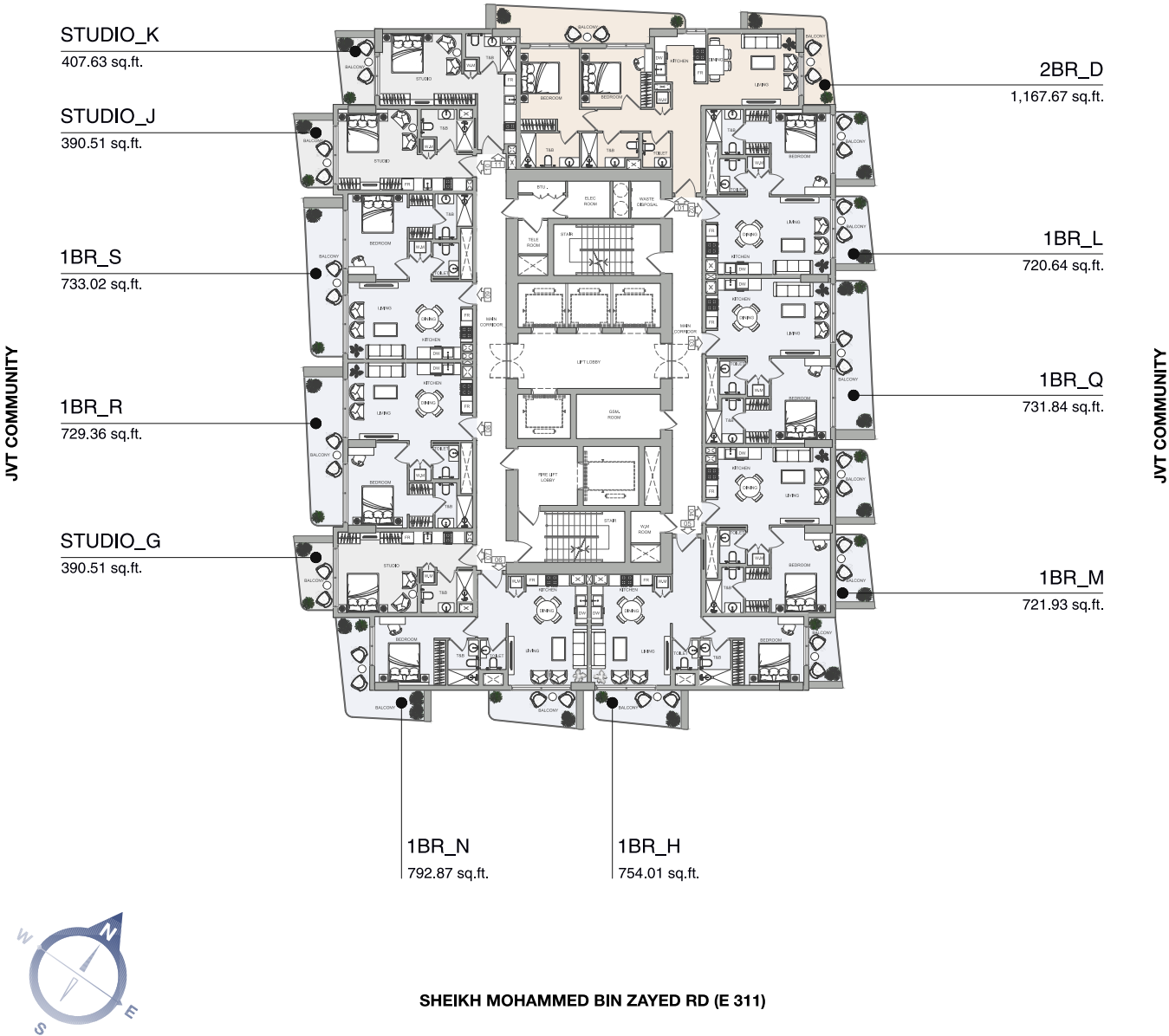
Disclaimer: all pictures, plans, layouts, information, data and details included in this brochure are indicative only may change at any time up to the final "as built" status in accordance with the final designs of the project, regulatory approvals and planning permissions

TYPICAL 03 FLOOR

FLOOR: 5,6,11,15,16,23,24,29,33,34,38



JUMEIRAH ISLANDS, DUBAI MARINA



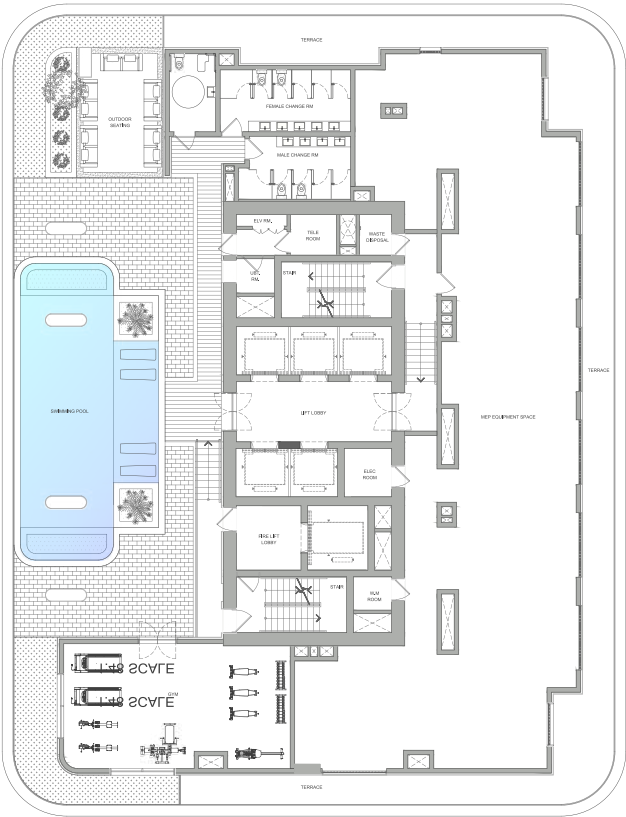
Disclaimer: all pictures, plans, layouts, information, data and details included in this brochure are indicative only may change at any time up to the final "as built" status in accordance with the final designs of the project, regulatory approvals and planning permissions

**FLOOR 18**  
**MECHANICAL FLOOR**



**JUMEIRAH ISLANDS, DUBAI MARINA**

JVT COMMUNITY



JVT COMMUNITY



**SHEIKH MOHAMMED BIN ZAYED RD (E 311)**

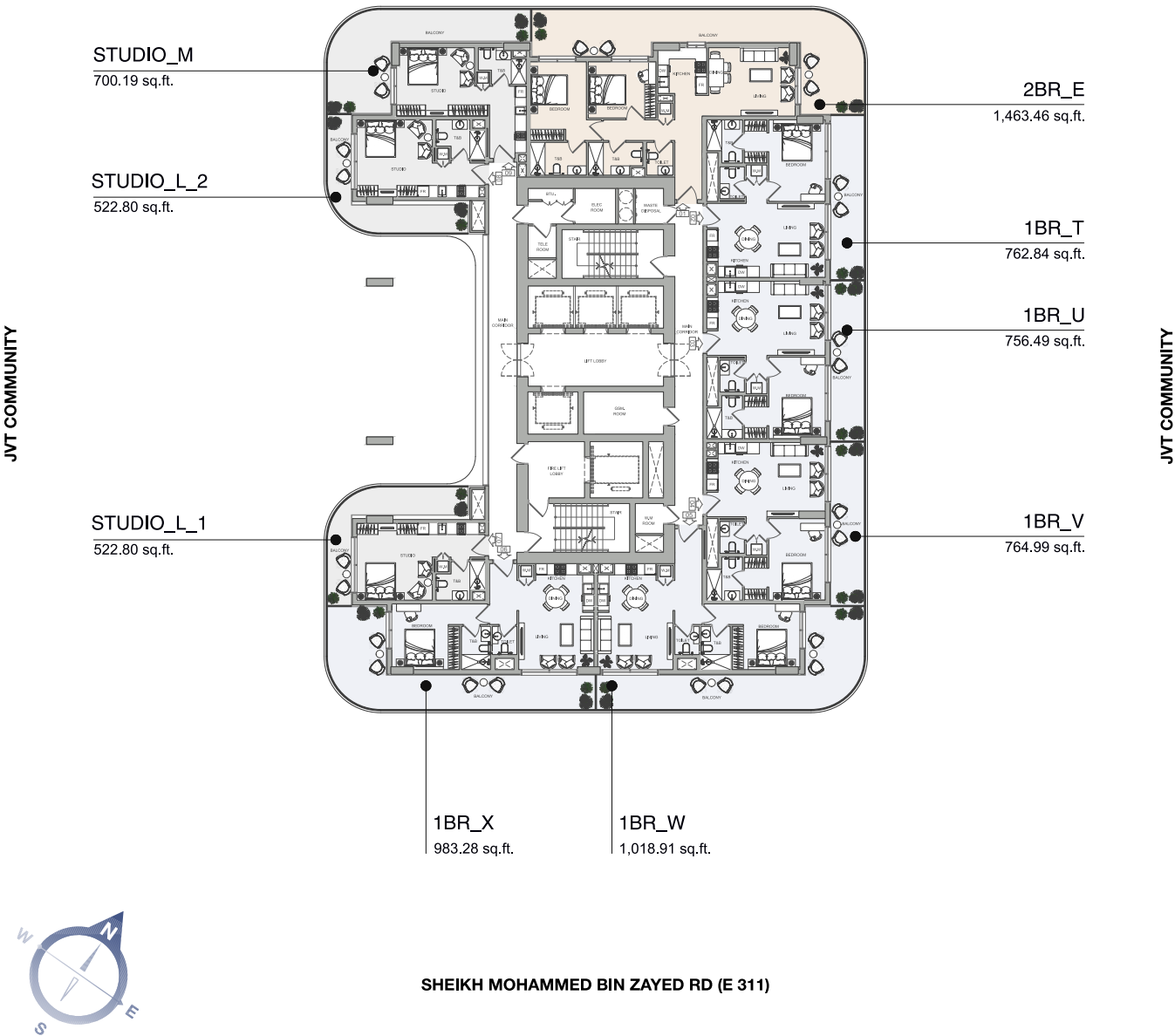
Disclaimer: all pictures, plans, layouts, information, data and details included in this brochure are indicative only may change at any time up to the final "as built" status in accordance with the final designs of the project, regulatory approvals and planning permissions



FLOOR 19



JUMEIRAH ISLANDS, DUBAI MARINA

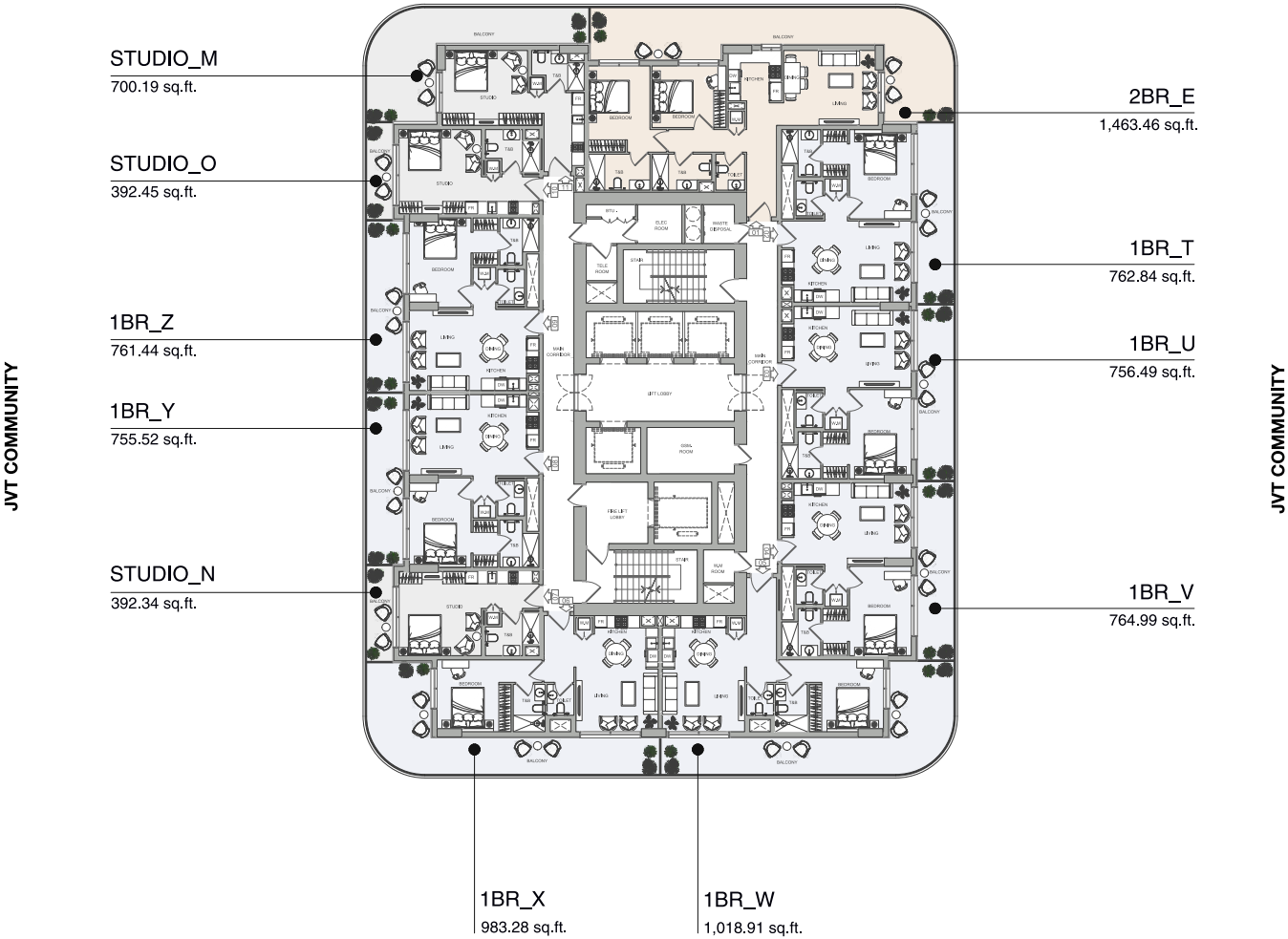


Disclaimer: all pictures, plans, layouts, information, data and details included in this brochure are indicative only may change at any time up to the final "as built" status in accordance with the final designs of the project, regulatory approvals and planning permissions

FLOOR 20



JUMEIRAH ISLANDS, DUBAI MARINA



SHEIKH MOHAMMED BIN ZAYED RD (E 311)

Disclaimer: all pictures, plans, layouts, information, data and details included in this brochure are indicative only may change at any time up to the final "as built" status in accordance with the final designs of the project, regulatory approvals and planning permissions

**Object 1**