

Apartment Specifications

Kitchen

- Fully integrated branded appliances –stove, exhaust hood, oven, microwave, free standing fridge and washing machine - Teka/Siemens or equivalent.
- MEP provision provided for dishwasher.
- Fully fitted wall and base MDF cabinets.
- Branded stainless steel sink – Teka/Grohe or equivalent.
- Breakfast bar/counter with seating provision.
- Under cabinet ambient LED lighting.
- Quartz worktops.

Electrical Fittings

- Ceiling mounted LED lights in living rooms and bedrooms.
- Ceiling mounted down-lights in kitchens and bathrooms.
- Electrical sockets in brushed stainless steel finish in kitchens, living rooms and bedrooms.
- USB outlets in bedrooms.
- TV outlets in living rooms and bedrooms.
- Telephone outlets in living rooms and bedrooms.
- Fully integrated intercom systems in all apartment units.

Bathroom

- Wall mounted branded W/C with concealed cistern and soft close lid with dual flush plate – Bagno/Kohler or equivalent.
- Undermounted branded wash basin in ensuite bathrooms – Bagno/Kohler or equivalent.
- Walk in shower with wall mounted shower set – Bagno/Kohler or equivalent.

Wardrobes & Doors

- Fully integrated spacious MDF wardrobes in all bedrooms.
- Fire rated veneer finish entrance door for all apartments.
- MDF doors with veneer finish for all internal doors.

Sustainability

- Motion sensors throughout the building.
- Water-saving mixers in kitchens and bathrooms.
- Energy efficient lighting throughout the building.
- Double glazed windows on the entire façade.

Wall & Floor Finishes

- Porcelain tiles in living, kitchens, bedrooms and hallways. White painted finish to walls.
- Porcelain floor tiles in ensuite and guest toilets.
- Ceramic feature wall tile in walk-in shower.

Exterior



LEOS
INTERNATIONAL
DEVELOPMENTS



Exterior



LEOS
INTERNATIONAL
DEVELOPMENTS



Exterior



LEOS
INTERNATIONAL
DEVELOPMENTS



Exterior



LEOS
INTERNATIONAL
DEVELOPMENTS



Exterior



LEOS
INTERNATIONAL
DEVELOPMENTS



Amenities – LEOS Clubhouse – 160 sqm



Amenities – LEOS Clubhouse – 160 sqm



Amenities – LEOS Clubhouse – 160 sqm



LEOS
INTERNATIONAL
DEVELOPMENTS



Amenities – LEOS Clubhouse – 160 sqm



LEOS
INTERNATIONAL
DEVELOPMENTS



Amenities – Temperature Controlled Swimming Pool

Adults pool: 13.5x9.2 meters, 1.5 meters deep Kid's pool: 4.5x9.2 meters, 0.5 meters deep



LEOS
INTERNATIONAL
DEVELOPMENTS



Amenities – Temperature Controlled Swimming Pool

Adults pool: 13.5x9.2 meters, 1.5 meters deep Kid's pool: 4.5x9.2 meters, 0.5 meters deep



LEOS
INTERNATIONAL
DEVELOPMENTS



Amenities – Temperature Controlled Swimming Pool

Adults pool: 13.5x9.2 meters, 1.5 meters deep Kid's pool: 4.5x9.2 meters, 0.5 meters deep



LEOS
INTERNATIONAL
DEVELOPMENTS



Amenities – Podium Garden & BBQ Area – 100 sqm



LEOS
INTERNATIONAL
DEVELOPMENTS



Amenities – Outdoor Kid's Play Area – 48 sqm



LEOS
INTERNATIONAL
DEVELOPMENTS



Amenities – Gym & Yoga Studio – 80 sqm



LEOS
INTERNATIONAL
DEVELOPMENTS



Amenities – Kid's Play Area – 54 sqm



LEOS
INTERNATIONAL
DEVELOPMENTS



Interior – Typical Lift Lobby



LEOS
INTERNATIONAL
DEVELOPMENTS



Interior – Typical Corridor



LEOS
INTERNATIONAL
DEVELOPMENTS



Interior – 1 Bedroom Unit



Interior – 1 Bedroom Unit



Interior – 1 Bedroom Unit



LEOS
INTERNATIONAL
DEVELOPMENTS



Interior – 1 Bedroom Unit



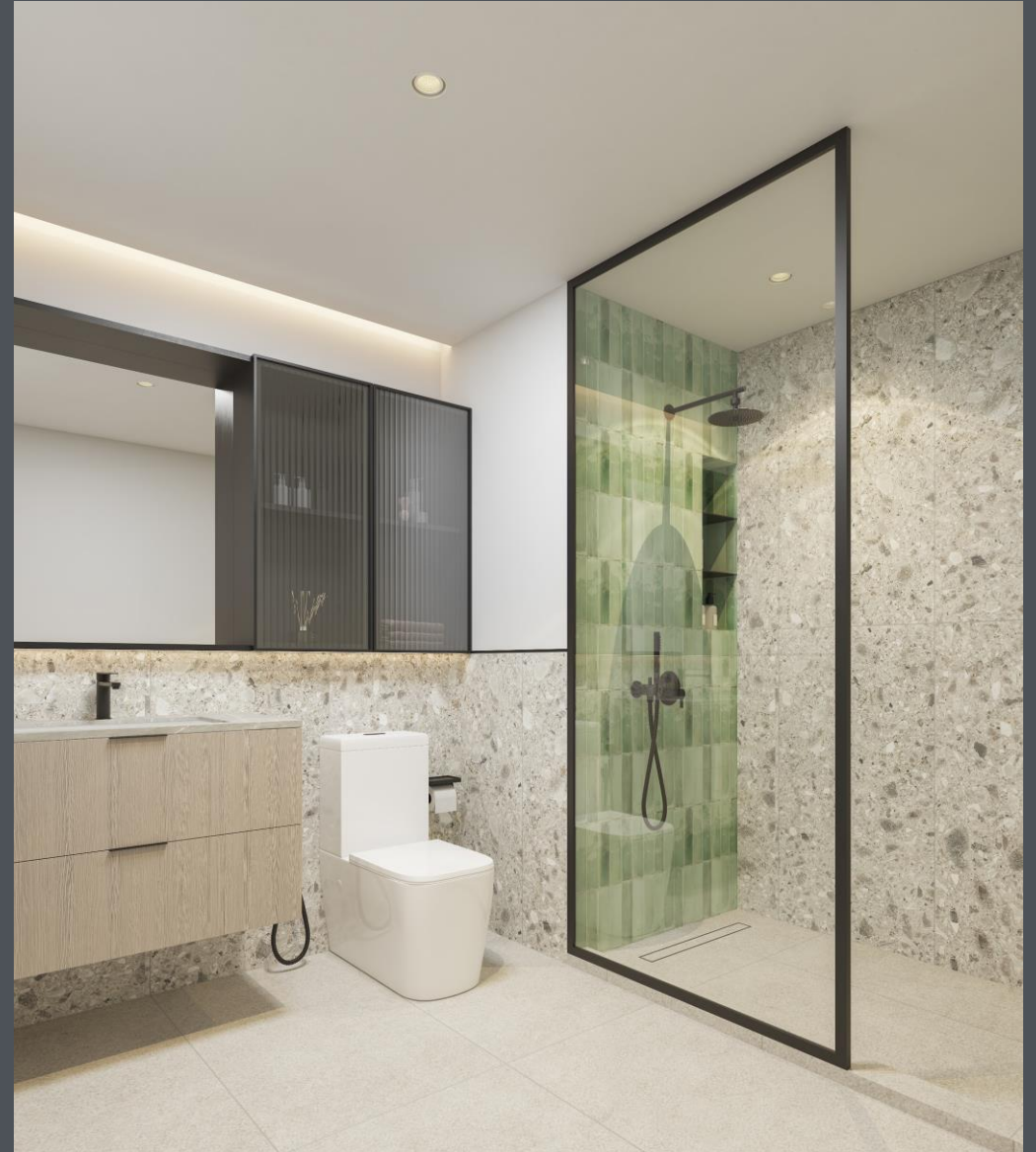
Interior – 1 Bedroom Unit



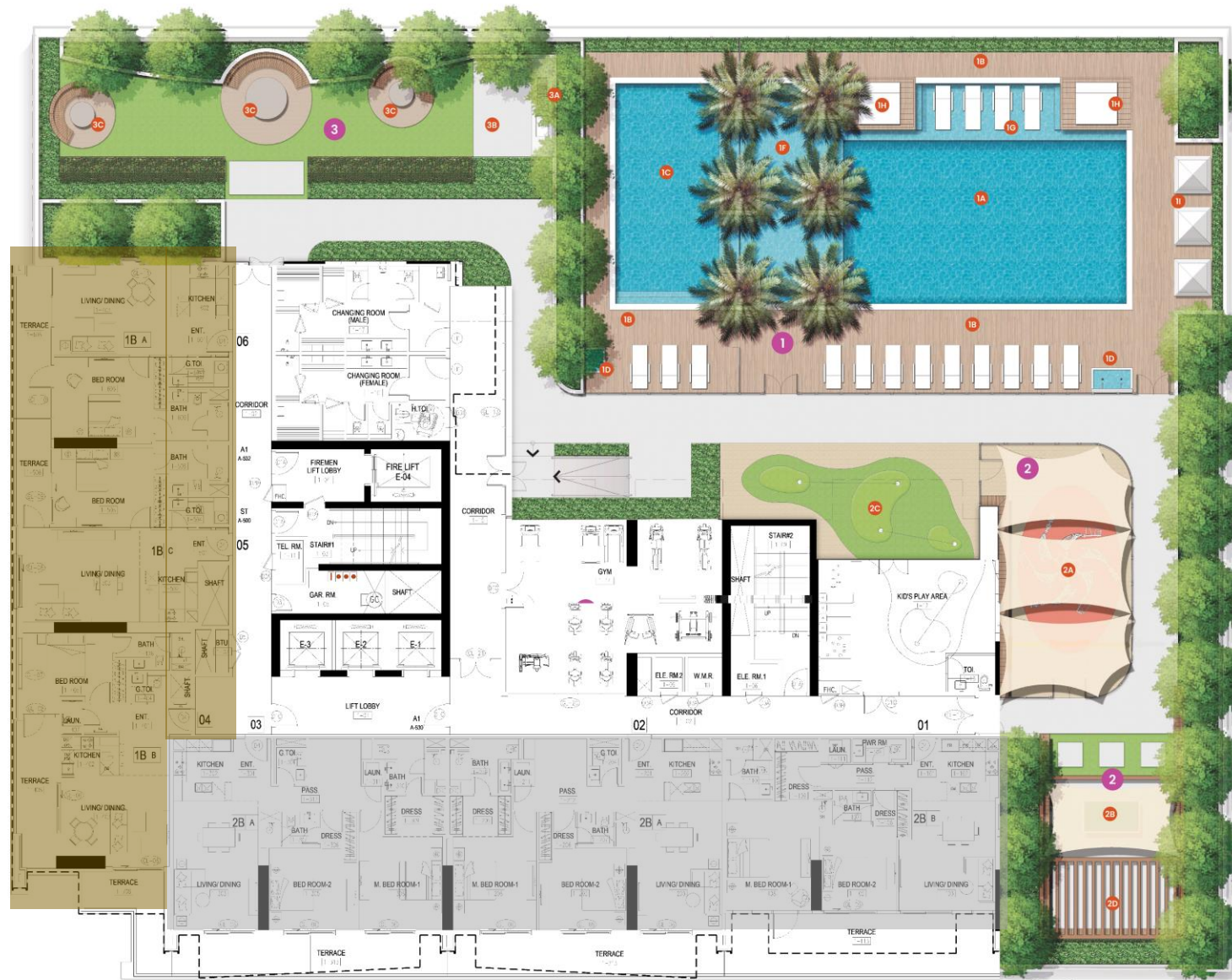
LEOS
INTERNATIONAL
DEVELOPMENTS



Interior – 1 Bedroom Unit



Floor Plate – First Floor

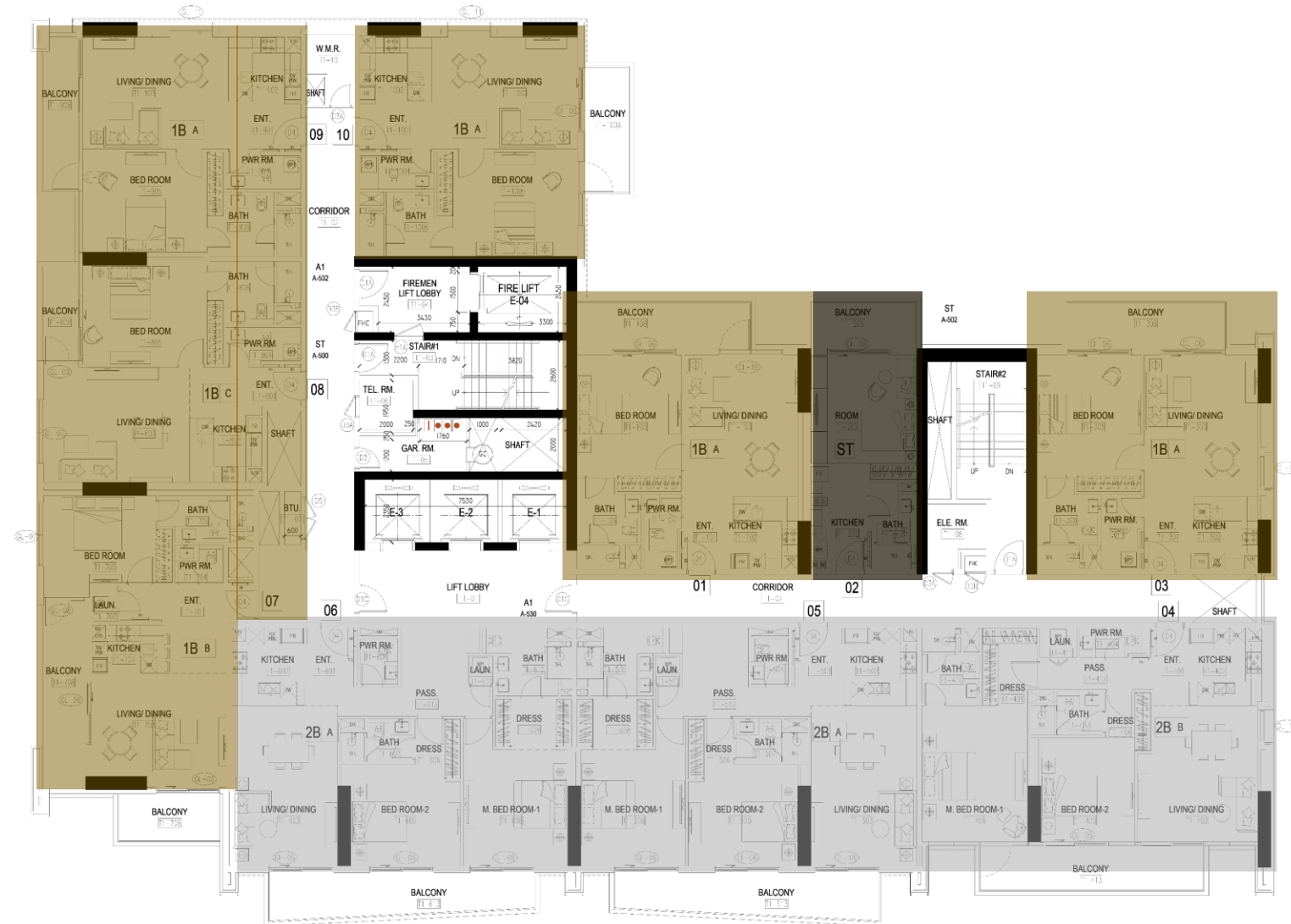


x31 Bedroom units



x32 Bedroom units

Floor Plate – Typical 2nd – 22nd Floor



x1 Studio unit

x6 1 Bedroom units

x3 2 Bedroom units

Interior – Studio unit

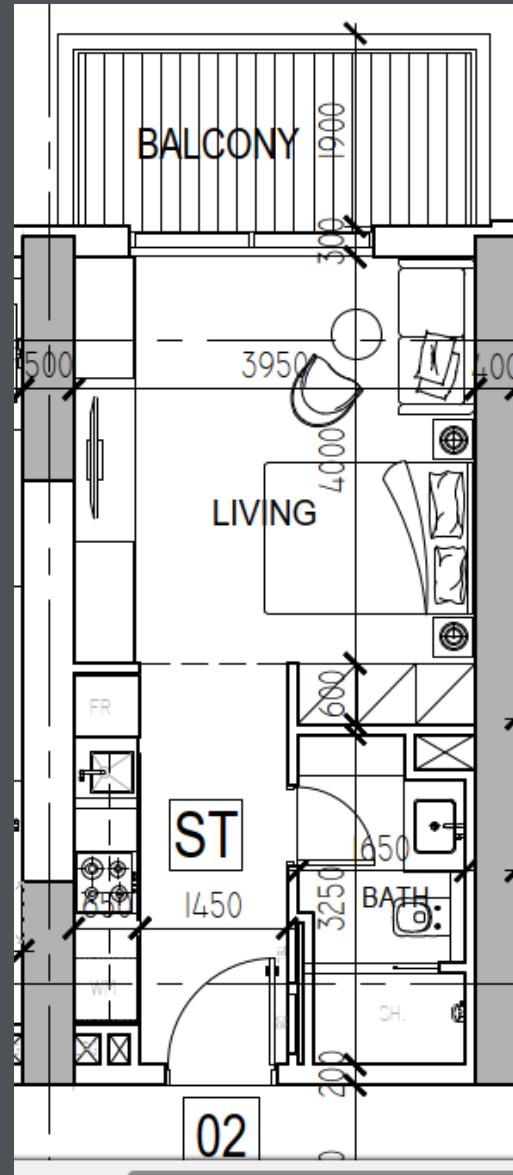
Internal area – 382.44 sqft

Outdoor area – 76.42 sqft

Total area – 458.87 sqft



LEOS
INTERNATIONAL
DEVELOPMENTS



Interior – 1 Bedroom – Type A

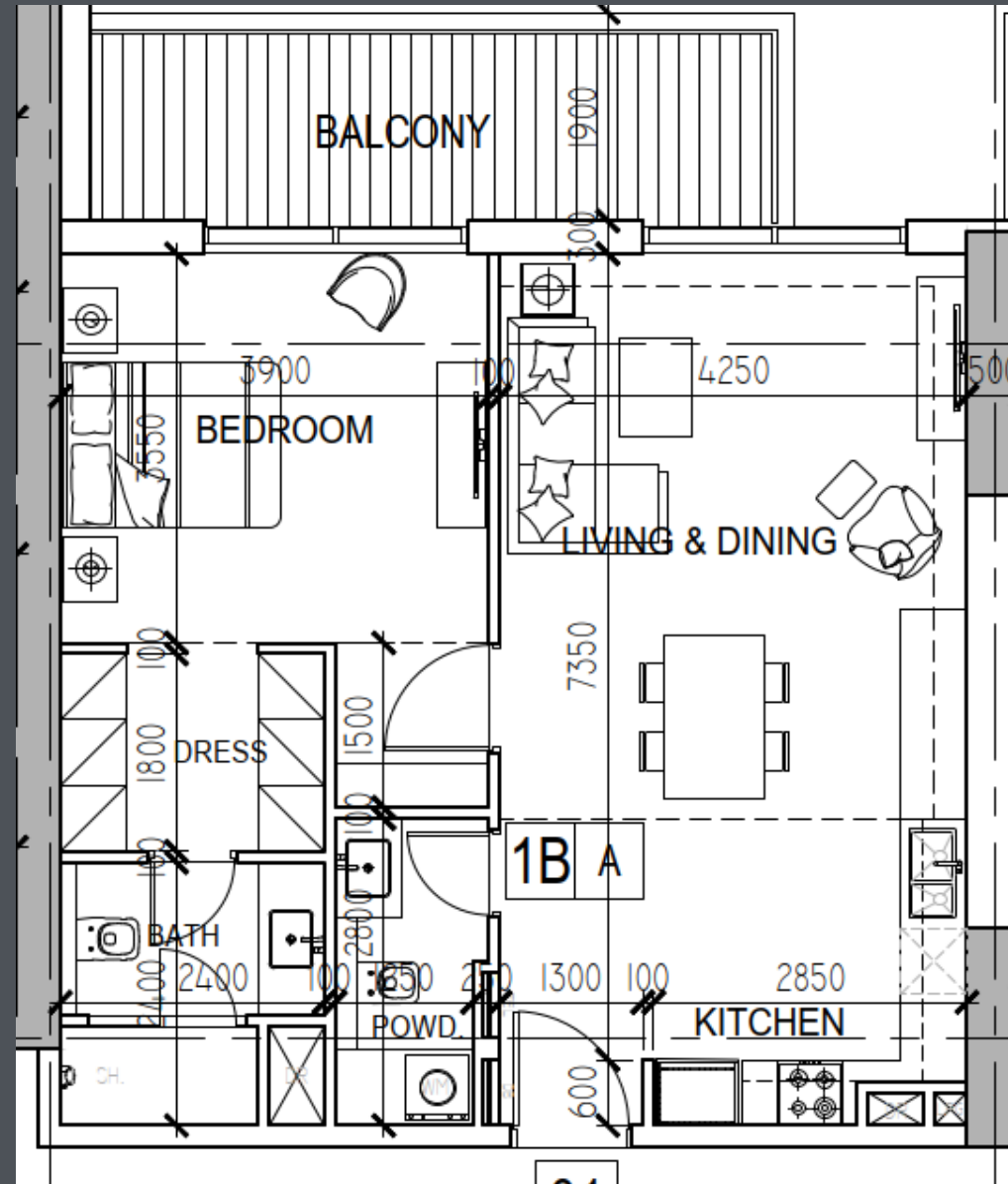
Internal area – 758.86 sqft

Outdoor area – 129.06 sqft

Total area – 887.91 sqft



LEOS
INTERNATIONAL
DEVELOPMENTS



Interior – 1 Bedroom – Type B

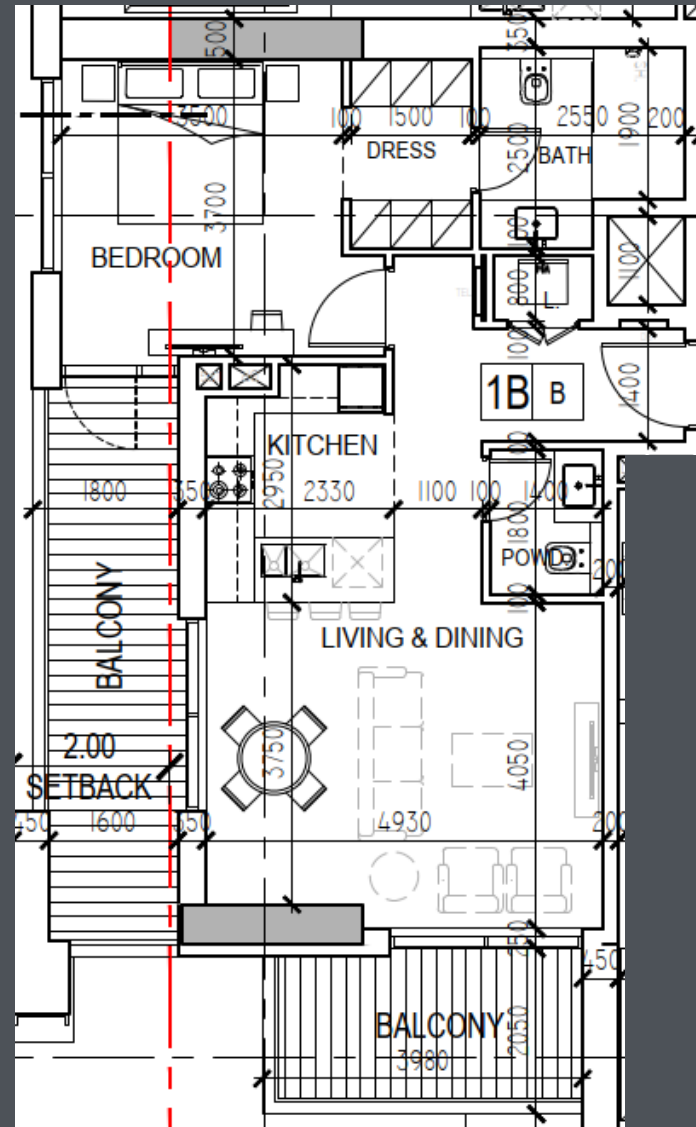
Internal area – 747.23 sqft

Outdoor area – 223.57 sqft

Total area – 970.80 sqft



LEOS
INTERNATIONAL
DEVELOPMENTS



Interior – 1 Bedroom – Type C

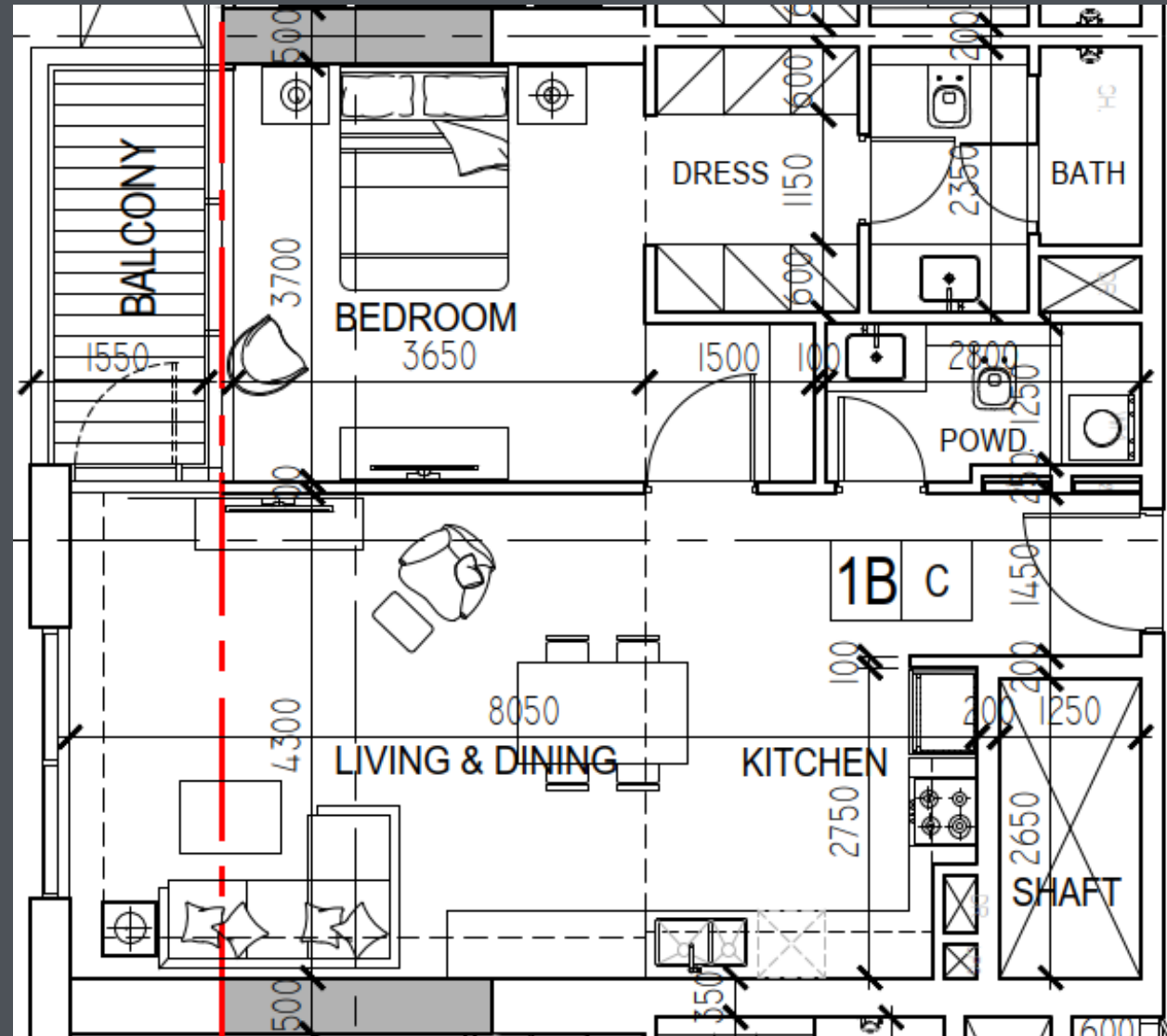
Internal area – 788.03 sqft

Outdoor area – 52.85 sqft

Total area – 840.88 sqft



LEOS
INTERNATIONAL
DEVELOPMENTS



Interior – 2 Bedroom – Type A

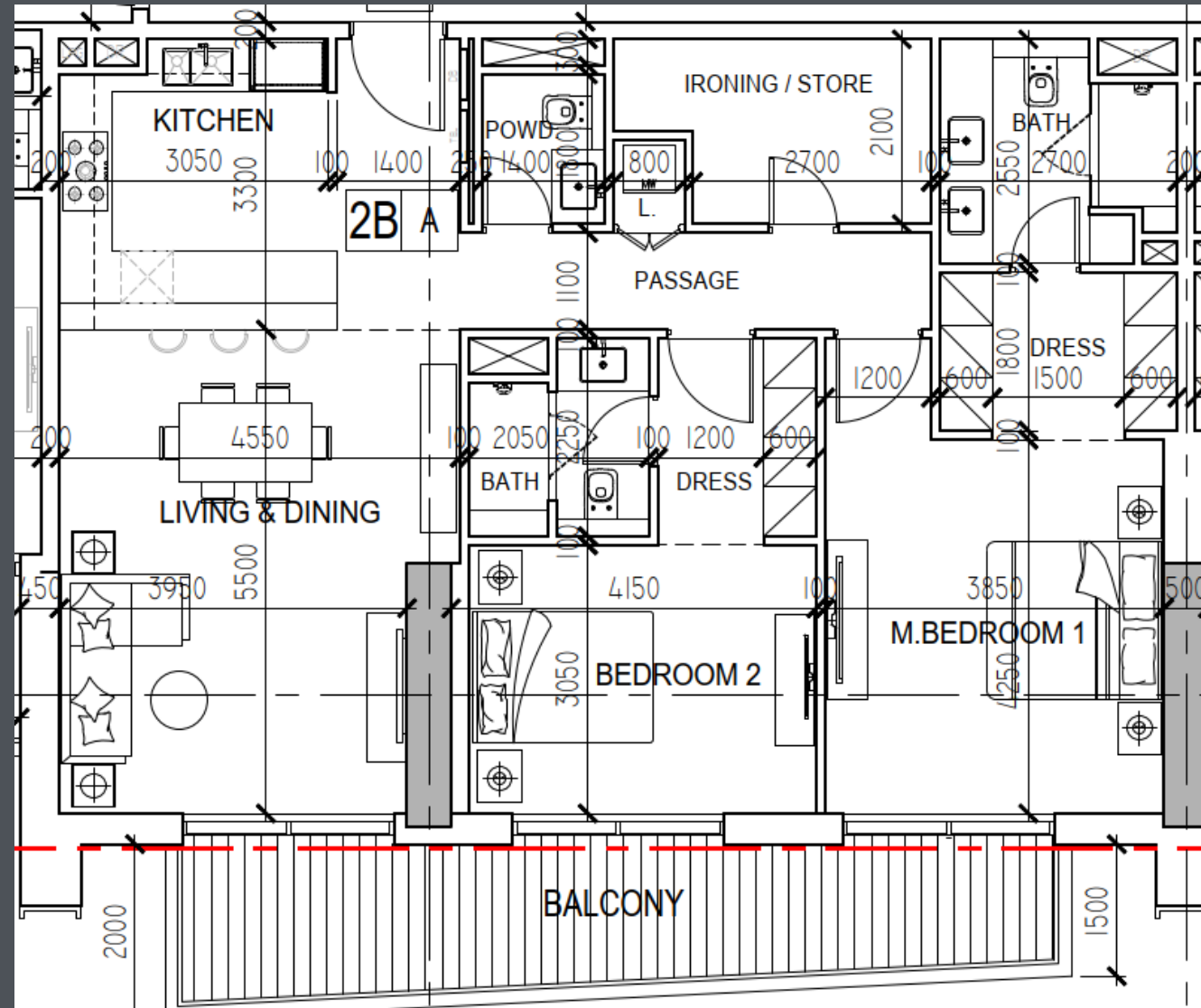
Internal area – 1239.68 sqft

Outdoor area – 182.56 sqft

Total area – 1422.24 sqft



LEOS
INTERNATIONAL
DEVELOPMENTS



Interior – 2 Bedroom – Type B

Internal area – 1131.93 sqft

Outdoor area – 152.63 sqft

Total area – 1284.57 sqft



LEOS
INTERNATIONAL
DEVELOPMENTS

