

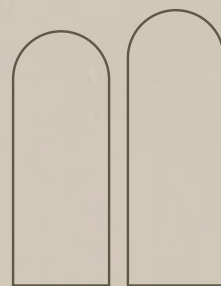


GATE ROYALE

RESIDENCES

by
BARON DEVELOPMENT





The Gateway to Luxury Living



Dubai

The Global Metropolis

Dubai stands as a beacon of ambition, innovation, and unparalleled growth. With its strategic location bridging the East and the West, Dubai offers world-class infrastructure, a thriving economy, and unmatched lifestyle opportunities. From high investment returns to tax-free incentives, Dubai is more than a city; it's a global future metropolis.

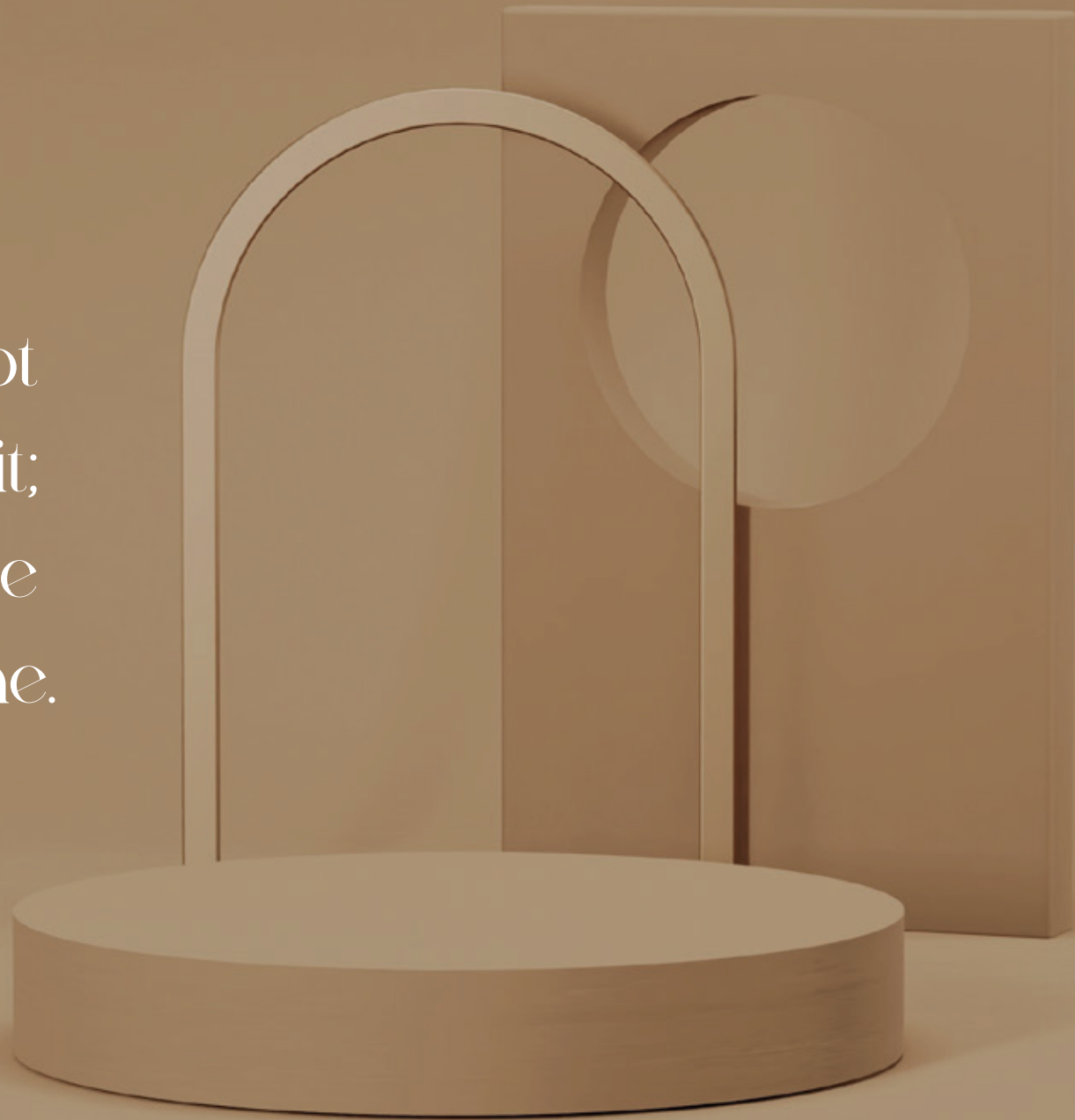


Al Furjan

The Heart of Dubai's Elegance

Nestled along Dubai's pristine coastline, Al Furjan is a coveted address synonymous with sophistication and exclusivity. As a family-friendly hub with world-class amenities, it offers proximity to the city's finest attractions, including luxury shopping, gourmet dining, and serene communities.

Luxury is not
a place you visit;
it is a place
you call home.



Furjan:

A perfect blend of tranquility and urban living

5 mins

Discovery Gardens
Metro Station 2

10 mins

Seikh Zayed
Road

11 mins

Ibn Battuta
Mall

15 mins

Dubai Marina
Mall

16 mins

Blue
Waters

21 mins

The Palm
Jumeirah

29 mins

DWC
Airport

32 mins

Dubai
Mall

32 mins

Burj
Khalifa

35 mins

DXB
Airport

School

1 min

Mosque

2 mins

Temple

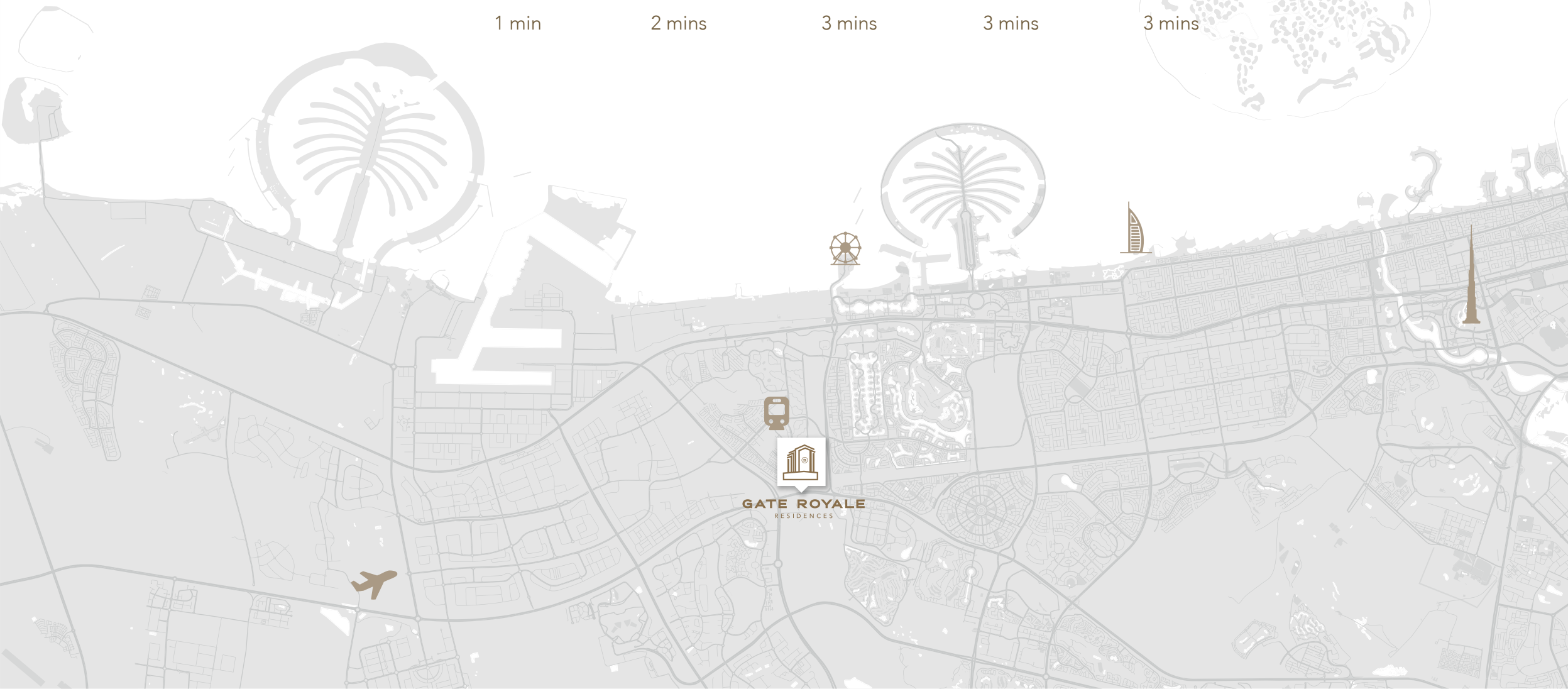
3 mins

Church

3 mins

Gurdwara

3 mins



Welcome to Gate Royale Residences

Imagine waking up to sunlight streaming through expansive windows, the soft rustle of palm trees, and the promise of a day steeped in opulence. Gate Royale Residences is more than a residence; it is a statement of refined living. Designed with meticulous attention to detail, every space reflects an ambiance of light, air, and sophistication.

A day at Gate Royale Residences begins with a serene morning on your private terrace, followed by moments of relaxation in exquisitely designed interiors. Whether hosting an elegant gathering or savoring quiet family moments, Gate Royale Residences offers a sanctuary of unparalleled luxury.





Beyond walls and windows,
we build legacies of distinction.



Entrance Lobby



Living Room



Entrance Lobby



Kitchen



Master Bedroom



Bedroom



Bathroom

Elegance is not an option; it's the
foundation of every Baron home.





Luxury amenities
are not just features;
they are experiences
crafted for you.



ROYALE
GATE
RESIDENCES



Swimming Pool



Gym



Kids Pool



Kids Play Area



Barbeque Lounge



Parking



Gate Royale is designed to offer the latest in smart home technology.

Each unit is equipped with advanced features that enhance comfort and convenience.



TEKA
Appliances



Climate
Control



Smart Living
System



High Speed
Internet



Integrated
Home Automation



Smart Access
Control



Smart Home
System

Privilege Meets Perfection

2 Bedroom Type 01

Level 1
Series 01

Total Saleable Area

Suite: 930.92 sq. ft

Balcony: 591.47 sq. ft

Total: 1522.39 sq. ft



3 Bedroom D - L Type 01

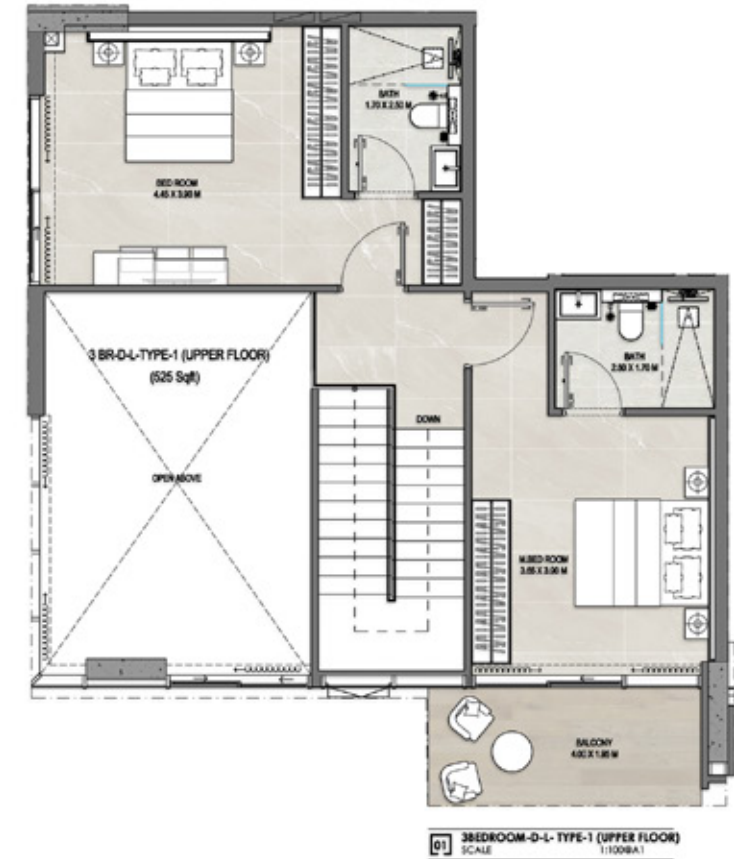
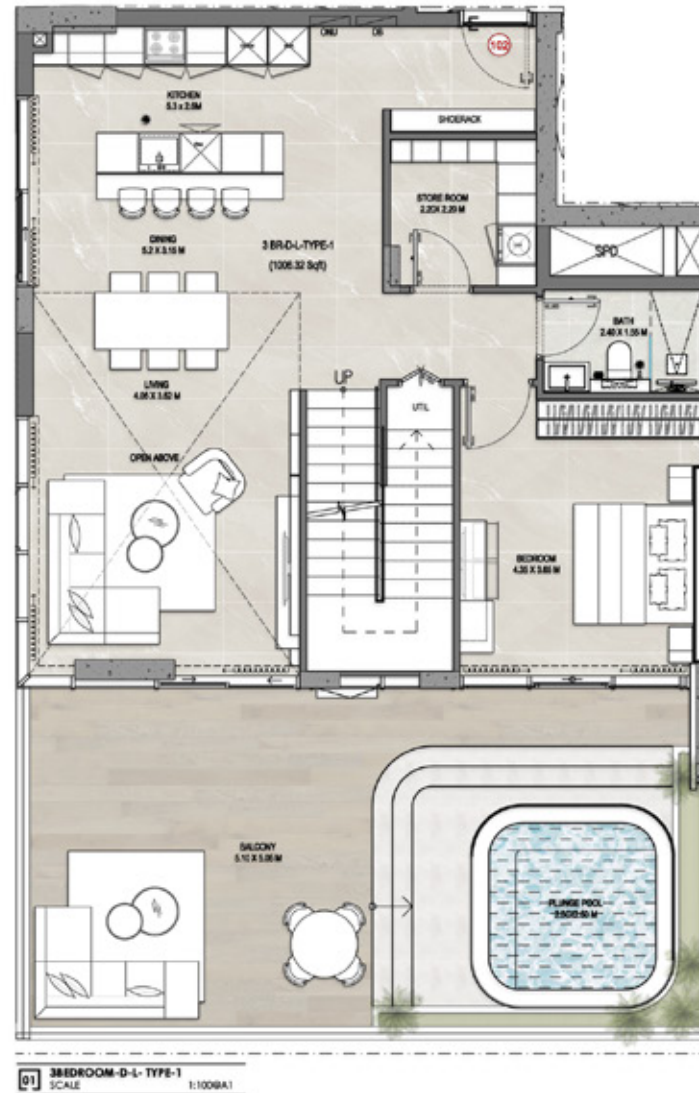
Level 1
Series 02

Total Saleable Area

Suite: 1544.01 sq. ft

Balcony: 715.85 sq. ft

Total: 2250.86 sq. ft



1 Bedroom Type 02

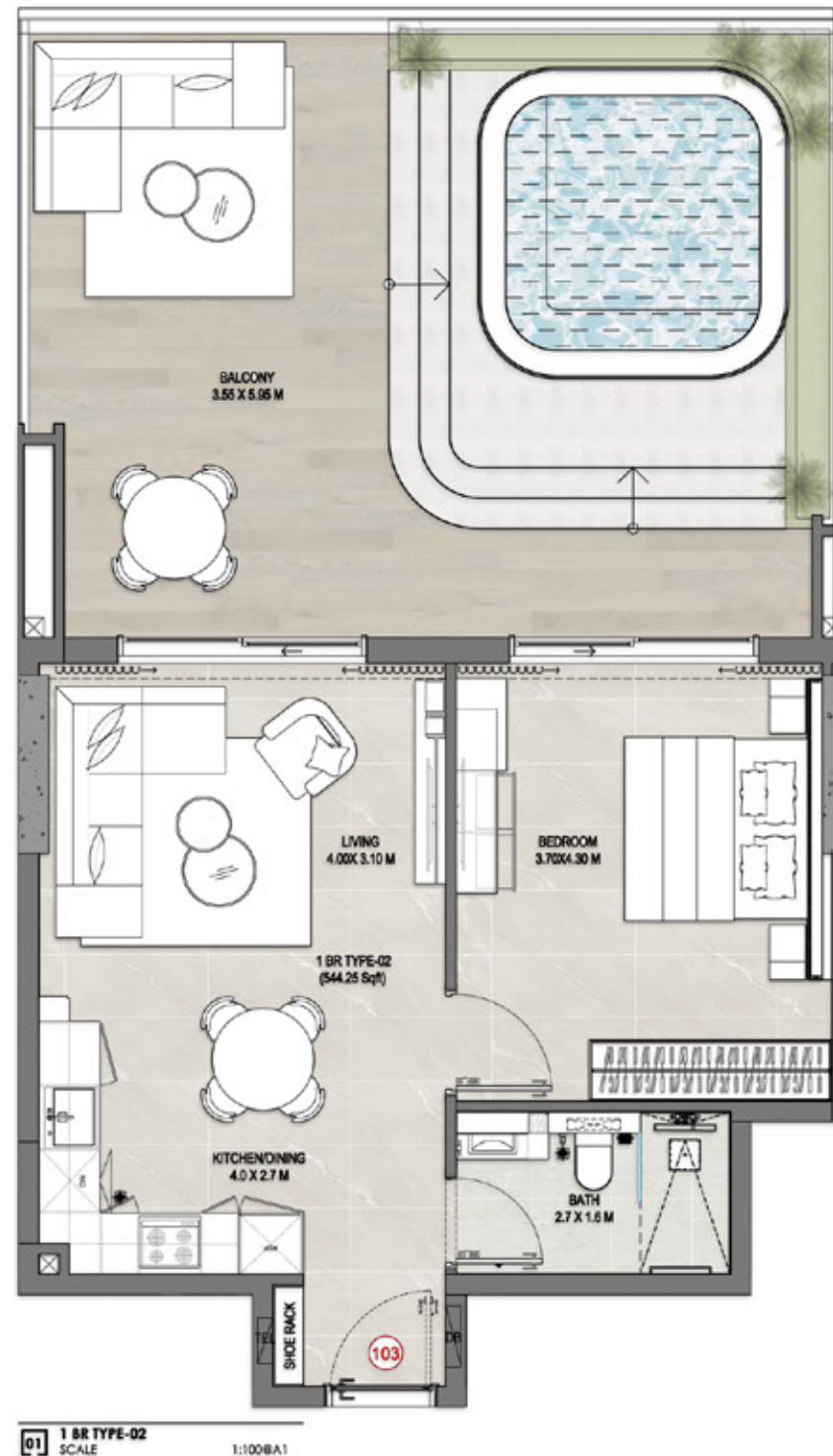
Level 1
Series 03

Total Saleable Area

Suite: 548.55 sq. ft

Balcony: 524.08 sq. ft

Total: 1072.63 sq. ft



2 Bedroom Type 04

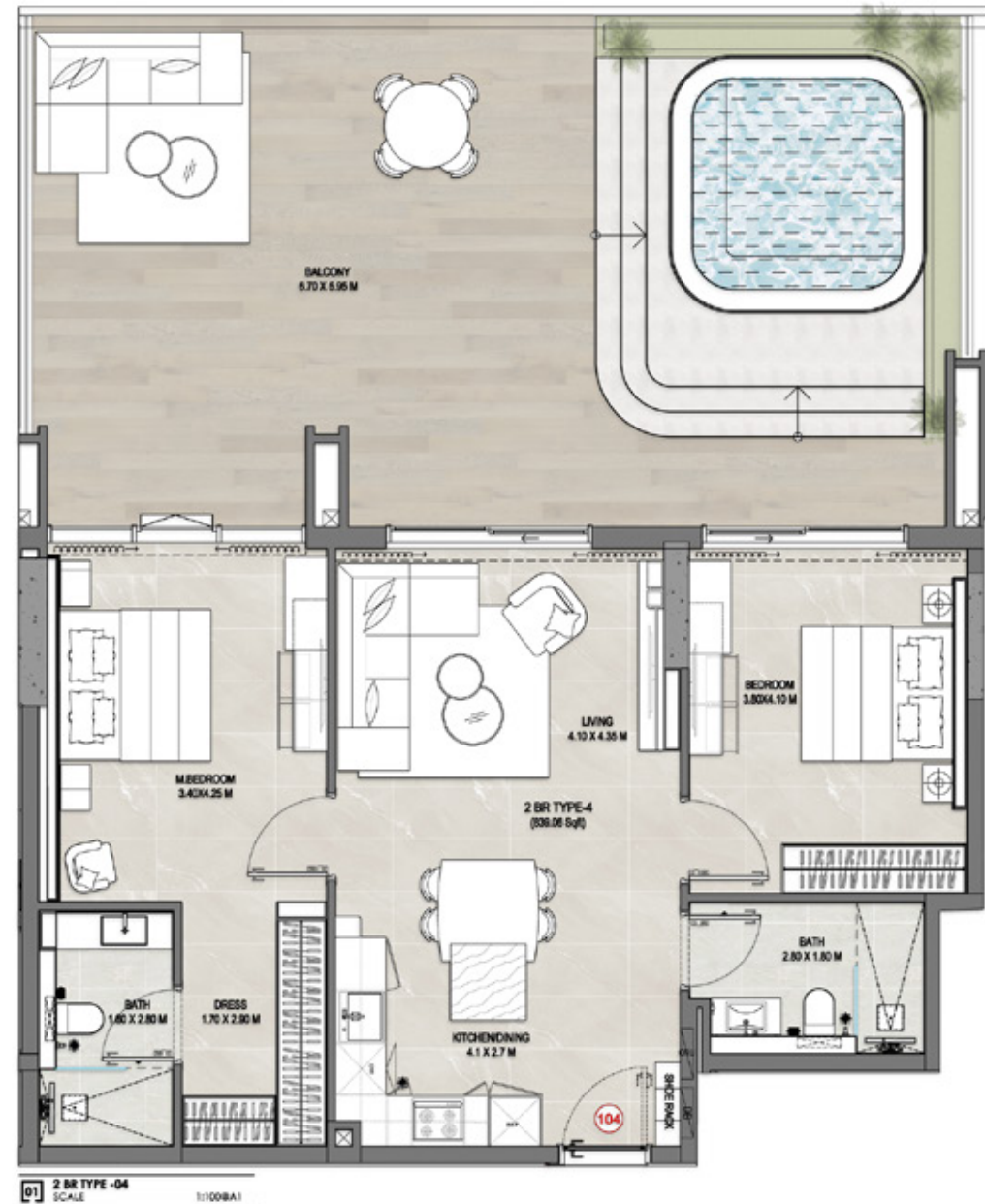
Level 1
Series 04

Total Saleable Area

Suite: 845.10 sq. ft

Balcony: 727.57 sq. ft

Total: 1572.67 sq. ft



3 Bedroom D - L Type 02

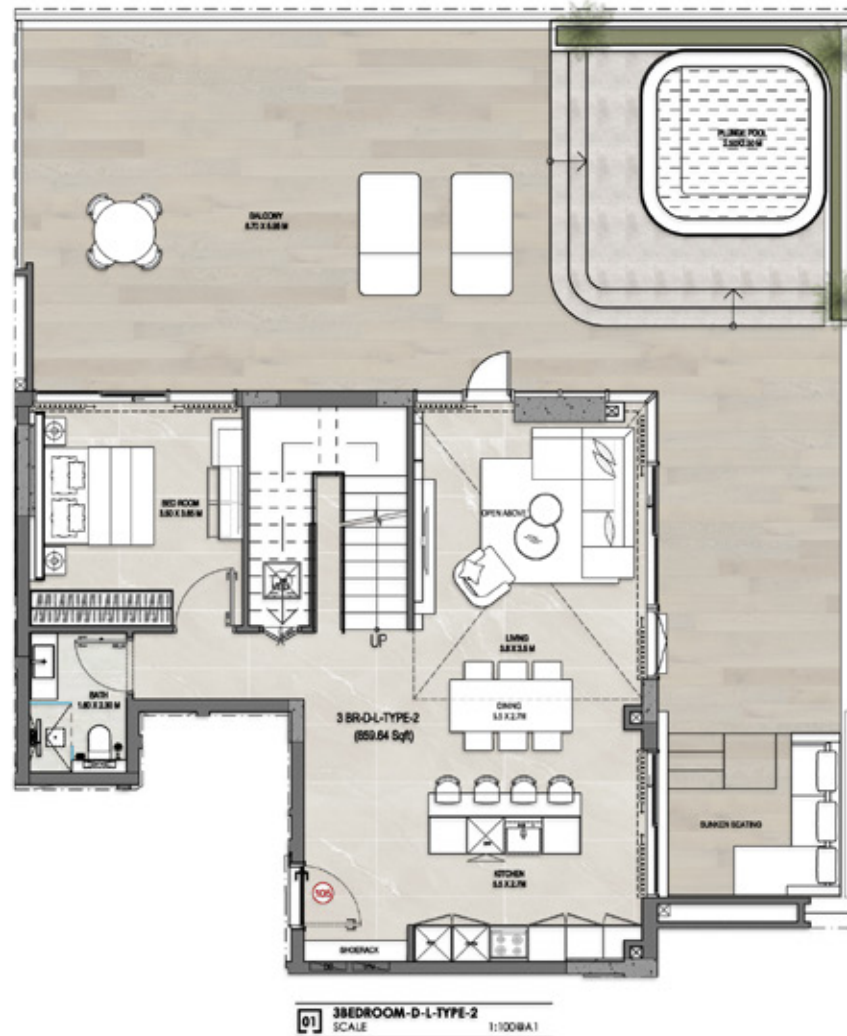
Level 1
Series 05

Total Saleable Area

Suite: 1401.80 sq. ft

Balcony: 1287.16 sq. ft

Total: 2688.96 sq. ft



3 Bedroom D - L Type 01A

Level 1
Series 06

Total Saleable Area

Suite: 1543.55 sq. ft

Balcony: 1207.27 sq. ft

Total: 2750.82 sq. ft



1 Bedroom Type 01

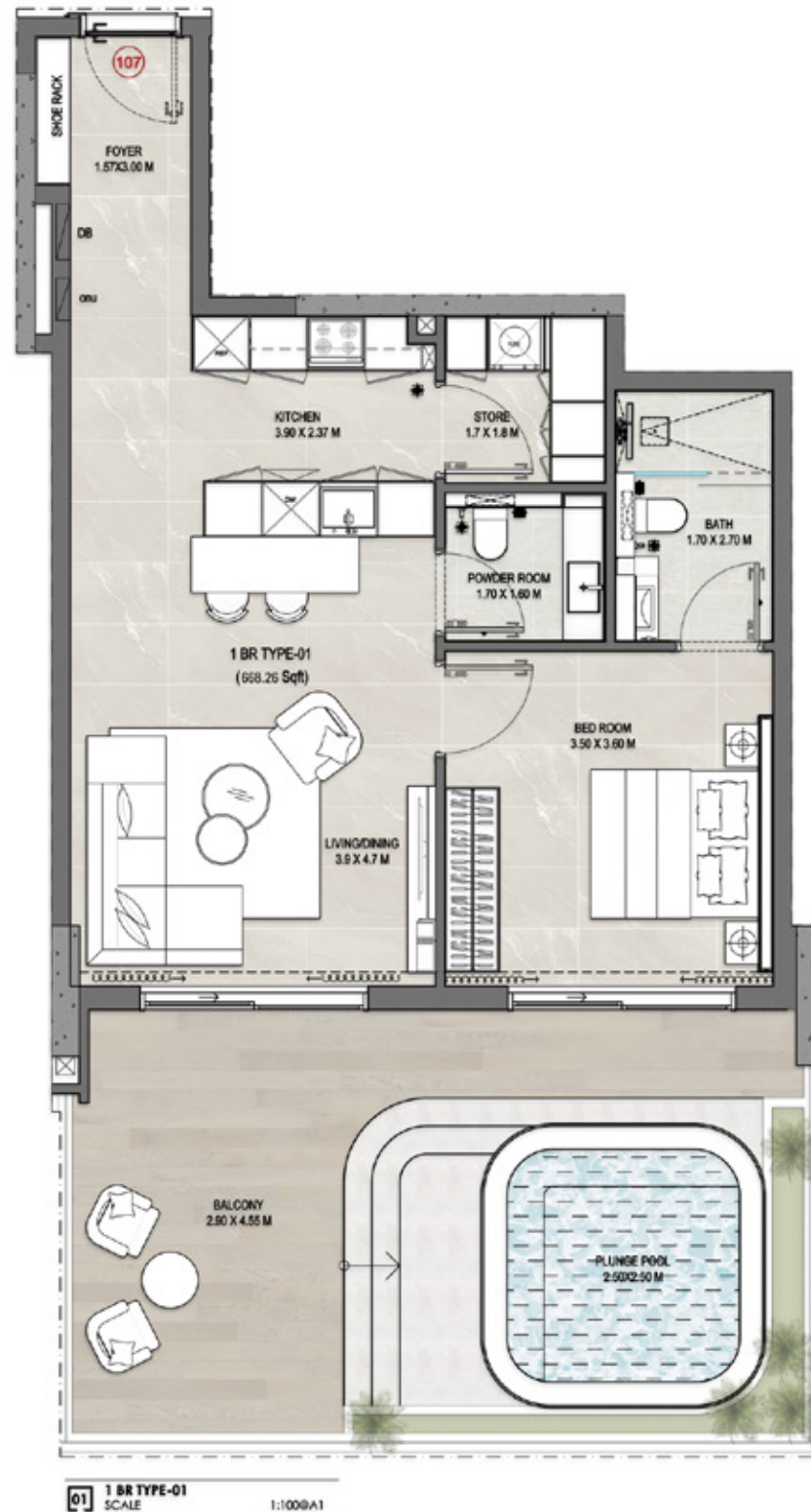
Level 1
Series 07

Total Saleable Area

Suite: 672.43 sq. ft

Balcony: 409.55 sq. ft

Total: 1081.98 sq. ft

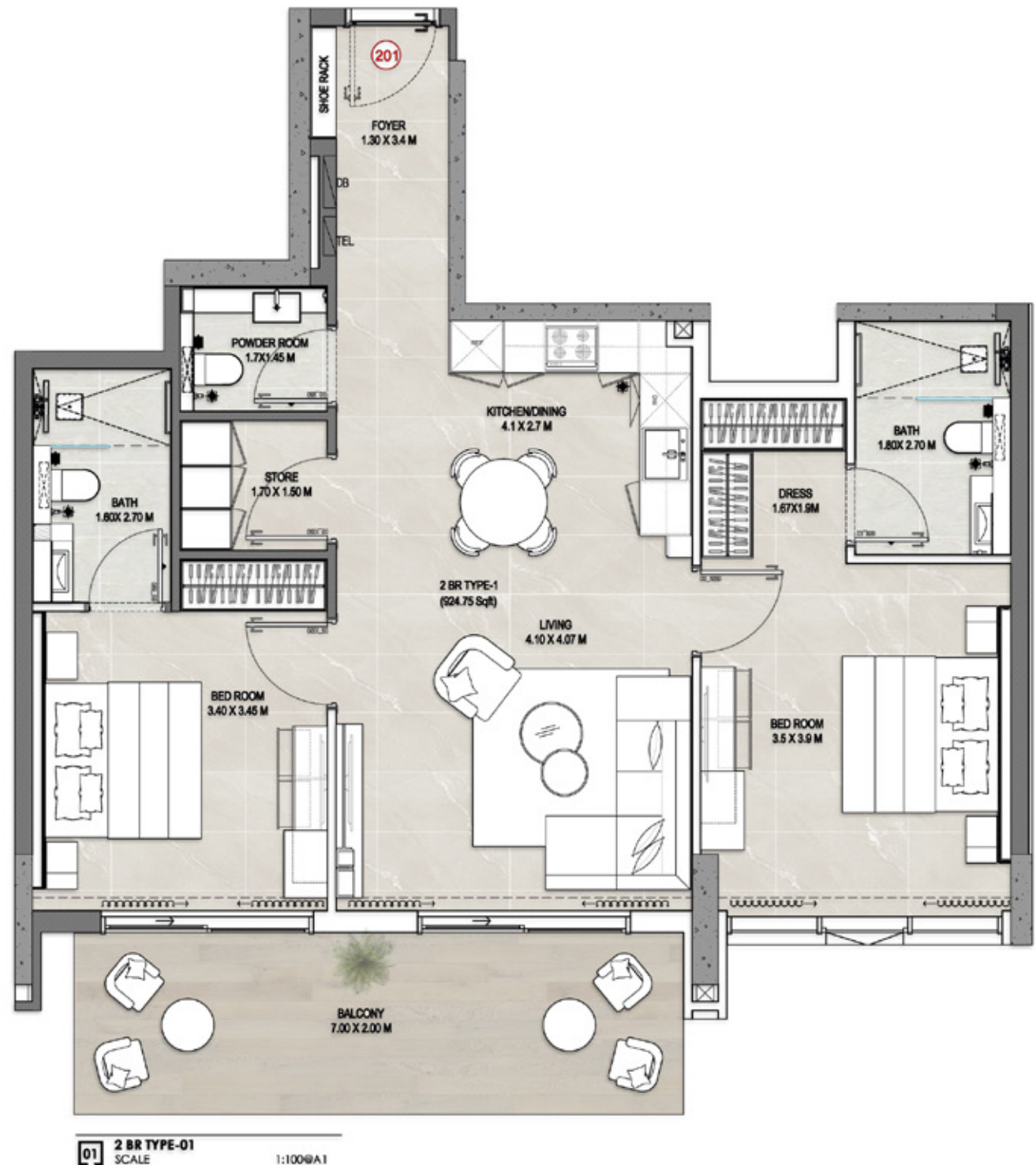


2 Bedroom Type 01

Level 2-7
Series 01

Total Saleable Area

Suite: 930.92 sq. ft
Balcony: 143.39 sq. ft
Total: 1074.31 sq. ft



2 Bedroom Type 03

Level 2
Series 02

Total Saleable Area

Suite: 839.98 sq. ft

Balcony: 274.39 sq. ft

Total: 1114.37 sq. ft



1 Bedroom Type 02

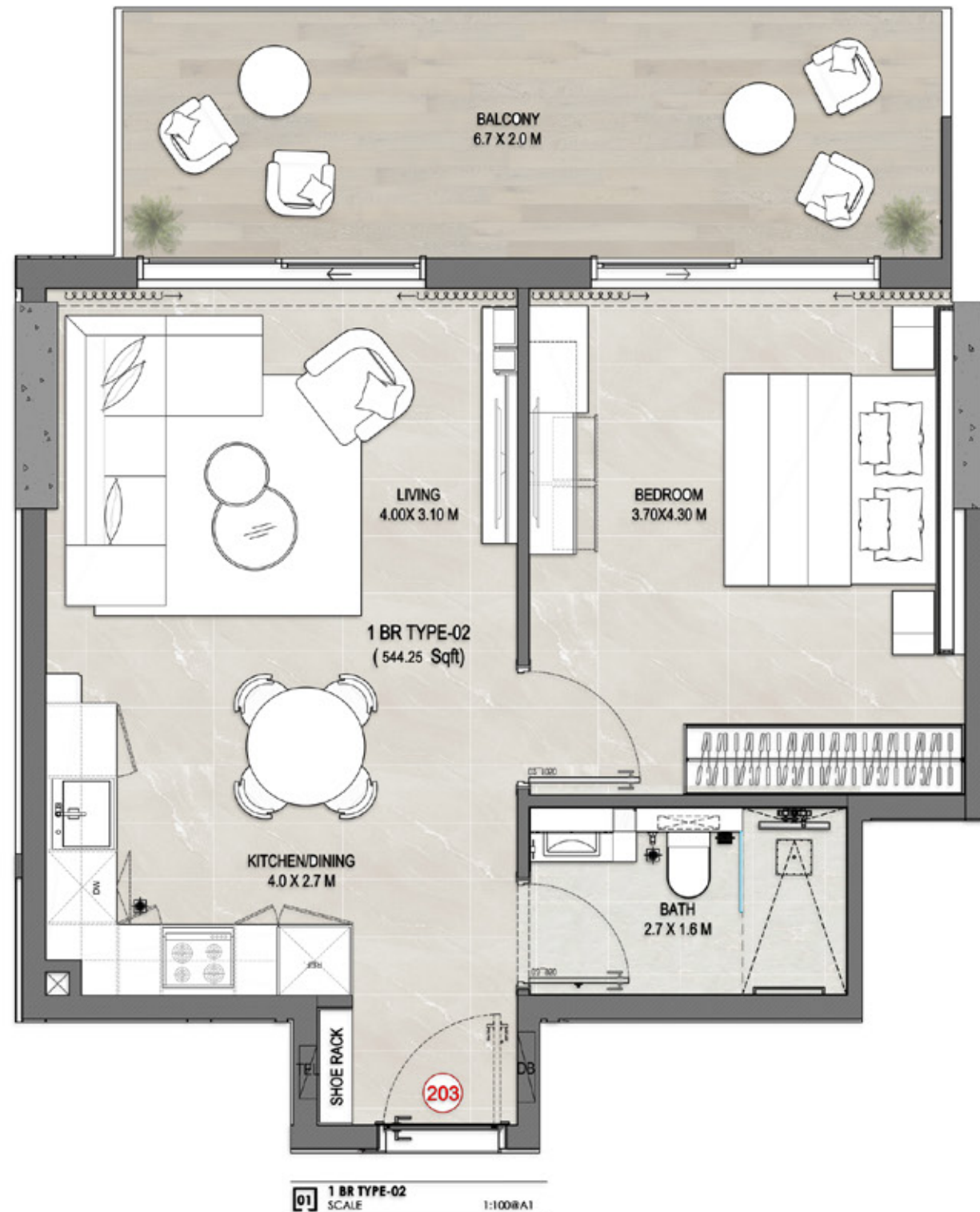
Level 2
Series 03

Total Saleable Area

Suite: 548.55 sq. ft

Balcony: 149.88 sq. ft

Total: 689.43 sq. ft



2 Bedroom Type 04

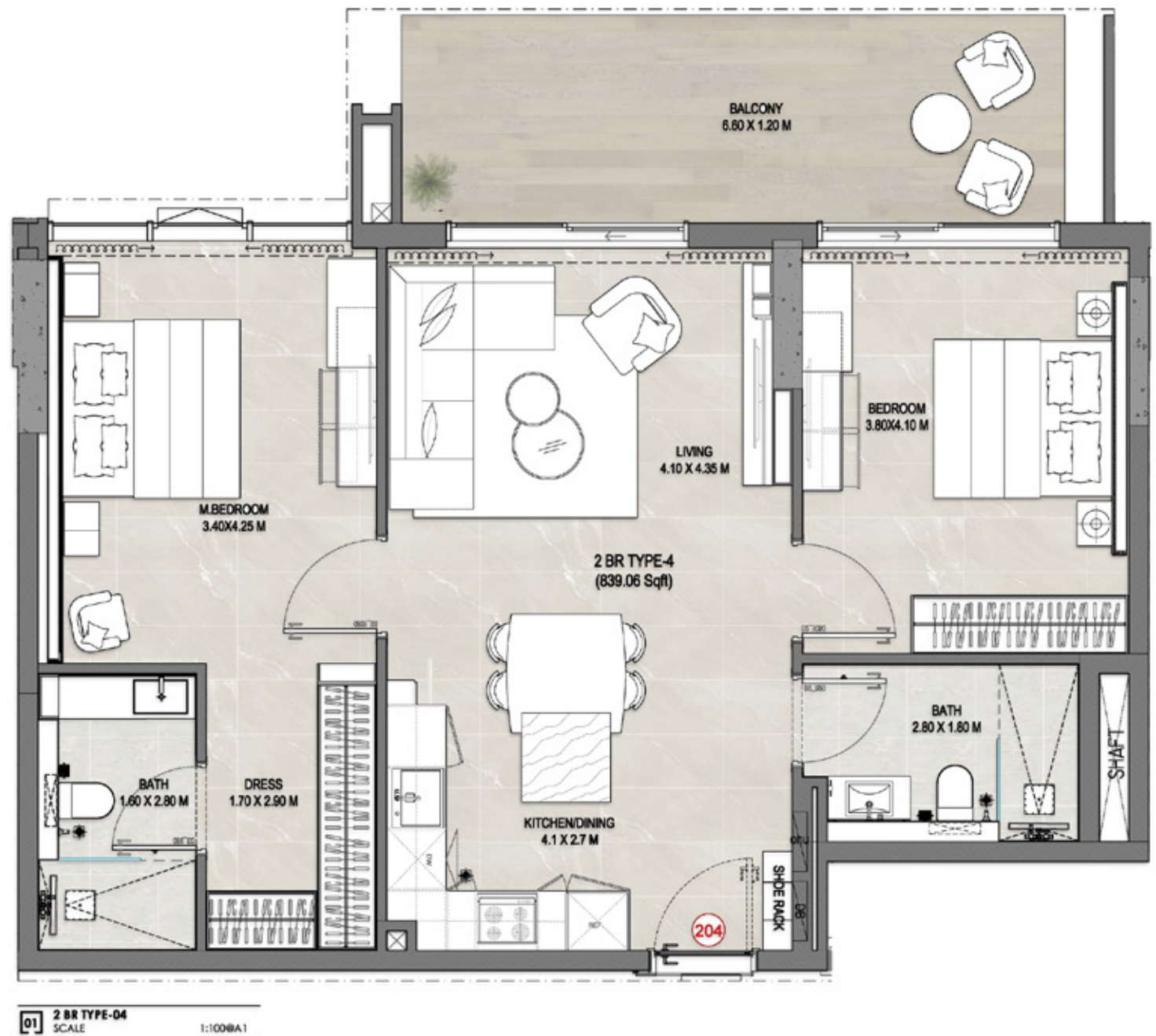
Level 2
Series 04

Total Saleable Area

Suite: 845.10 sq. ft

Balcony: 145.48 sq. ft

Total: 990.58 sq. ft



1 Bedroom Type 01

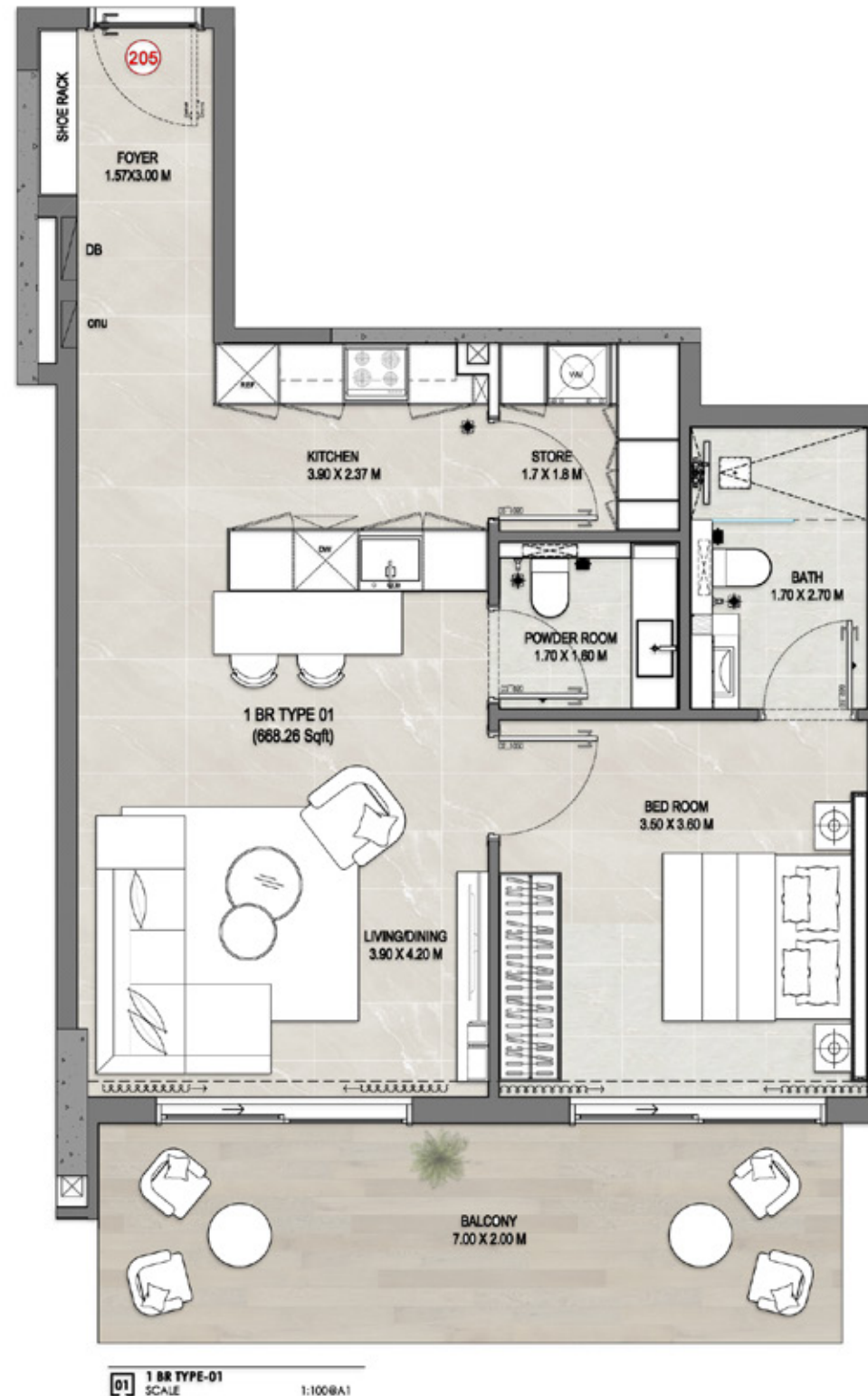
Level 2
Series 05

Total Saleable Area

Suite: 672.43 sq. ft

Balcony: 140.20 sq. ft

Total: 812.63 sq. ft



2 Bedroom Type 02A

Level 3-7
Series 02

Total Saleable Area

Suite: 960.49 sq. ft
Balcony: 278.12 sq. ft
Total: 1238.61 sq. ft



2 Bedroom Type 03

Level 3-7
Series 03

Total Saleable Area

Suite: 839.98 sq. ft

Balcony: 275.19 sq. ft

Total: 1115.17 sq. ft



1 Bedroom Type 02

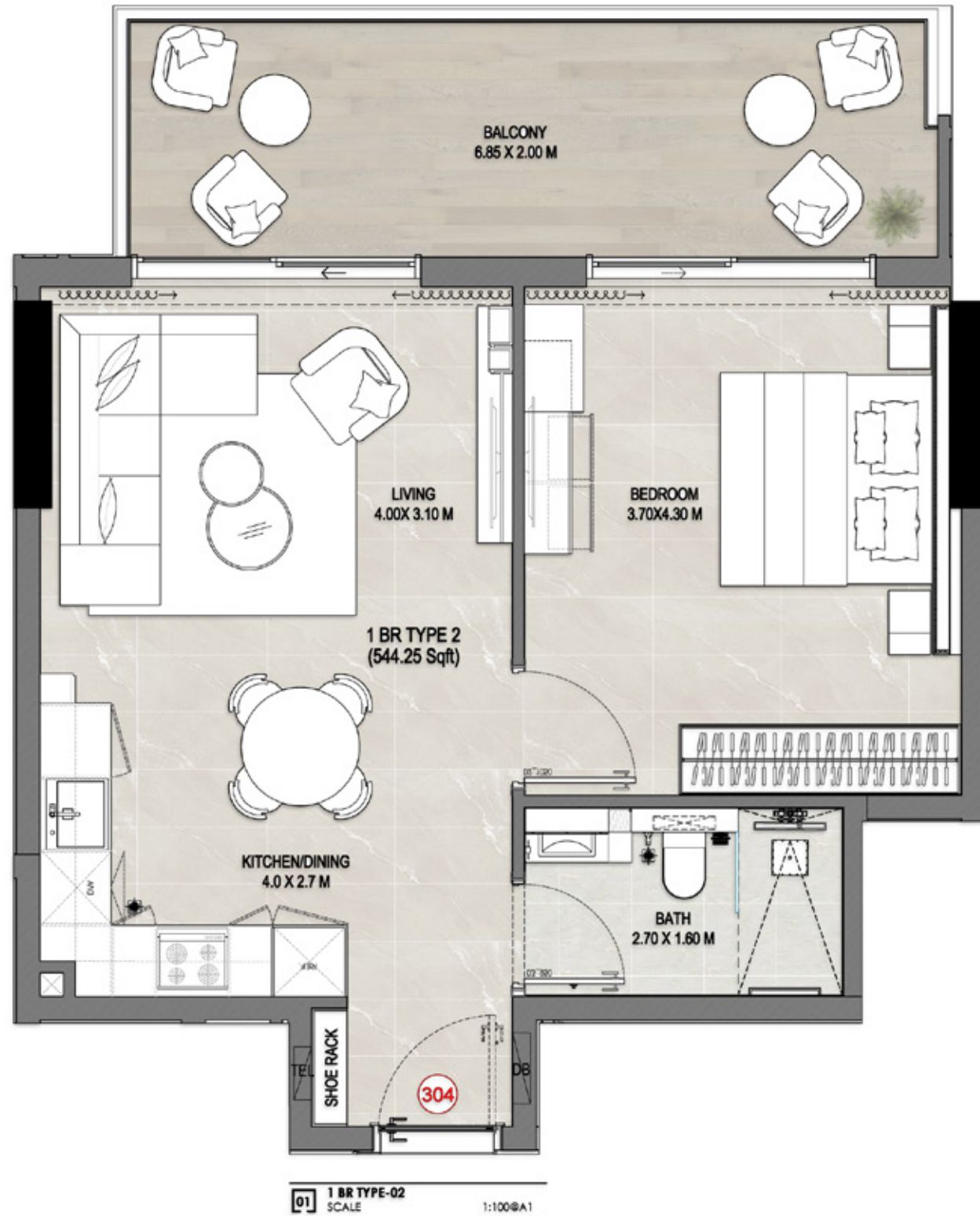
Level 3-7
Series 04

Total Saleable Area

Suite: 548.55 sq. ft

Balcony: 149.88 sq. ft

Total: 698.43 sq. ft



2 Bedroom Type 04

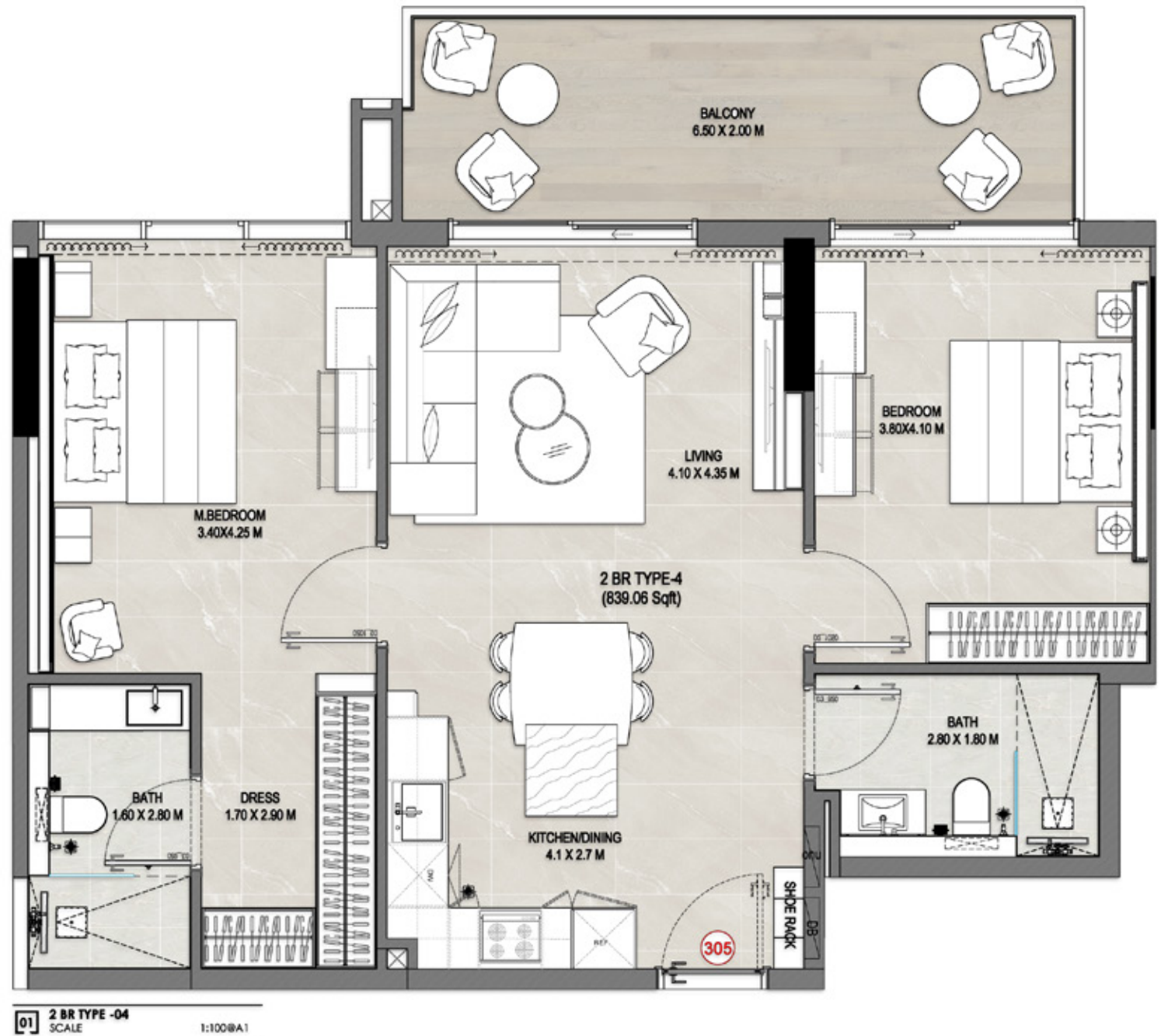
Level 3-7
Series 05

Total Saleable Area

Suite: 845.10 sq. ft

Balcony: 145.48 sq. ft

Total: 990.58 sq. ft



2 Bedroom Type 03

Level 3-7
Series 06

Total Saleable Area

Suite: 839.98 sq. ft

Balcony: 275.20 sq. ft

Total: 1115.18 sq. ft



2 Bedroom Type 02

Level 3-7
Series 07

Total Saleable Area

Suite: 960.49 sq. ft
Balcony: 227.91 sq. ft
Total: 1238.40 sq. ft



1 Bedroom Type 01

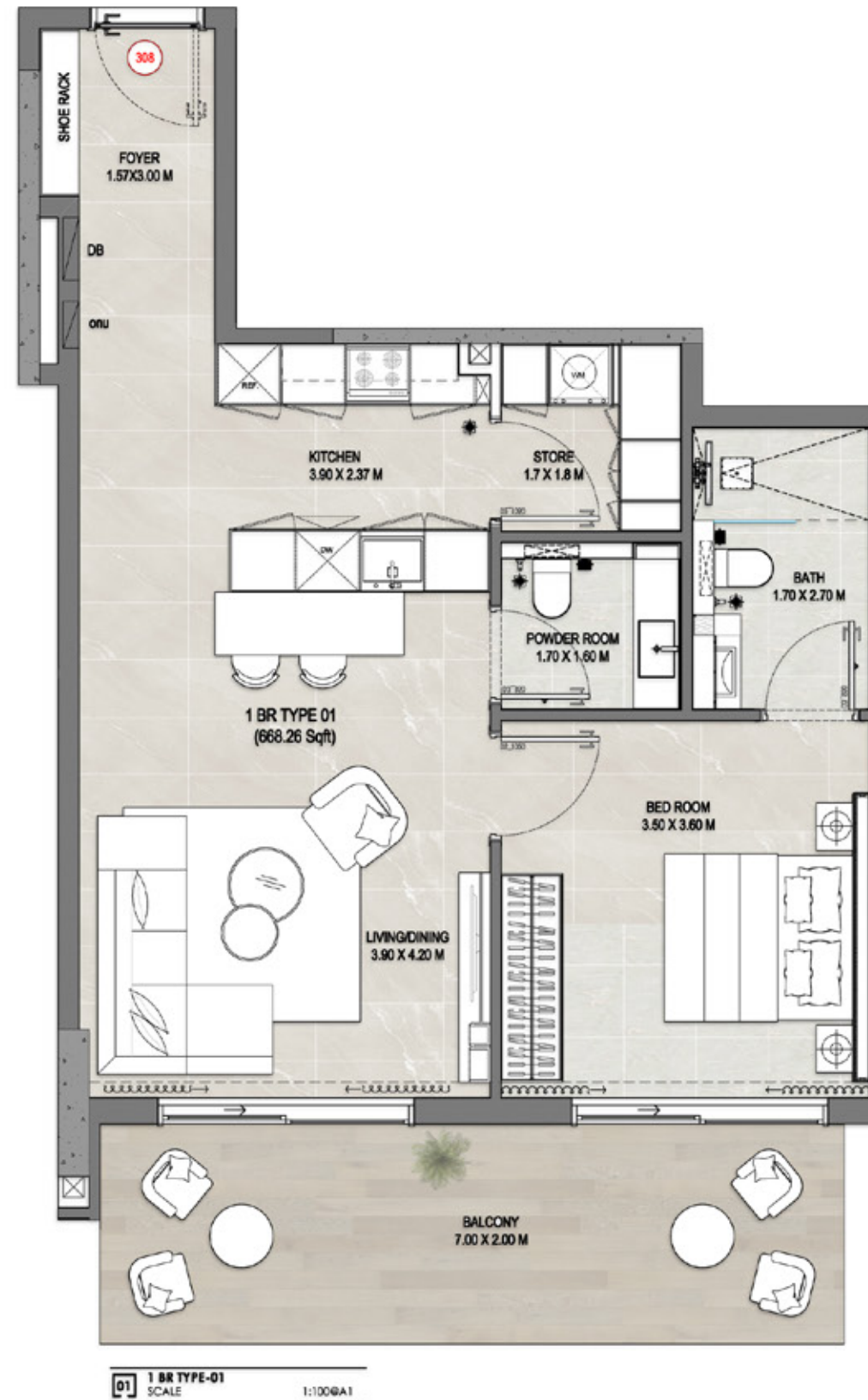
Level 3-7
Series 08

Total Saleable Area

Suite: 672.43 sq. ft

Balcony: 140.20 sq. ft

Total: 812.63 sq. ft



3 Bedroom Type 03

Level 8-9
Series 01

Total Saleable Area

Suite: 1688.91 sq. ft

Balcony: 424.61 sq. ft

Total: 2113.52 sq. ft



3 Bedroom Type 04

Level 8-9
Series 02

Total Saleable Area

Suite: 1591.98 sq. ft
Balcony: 432.10 sq. ft
Total: 2024.08 sq. ft

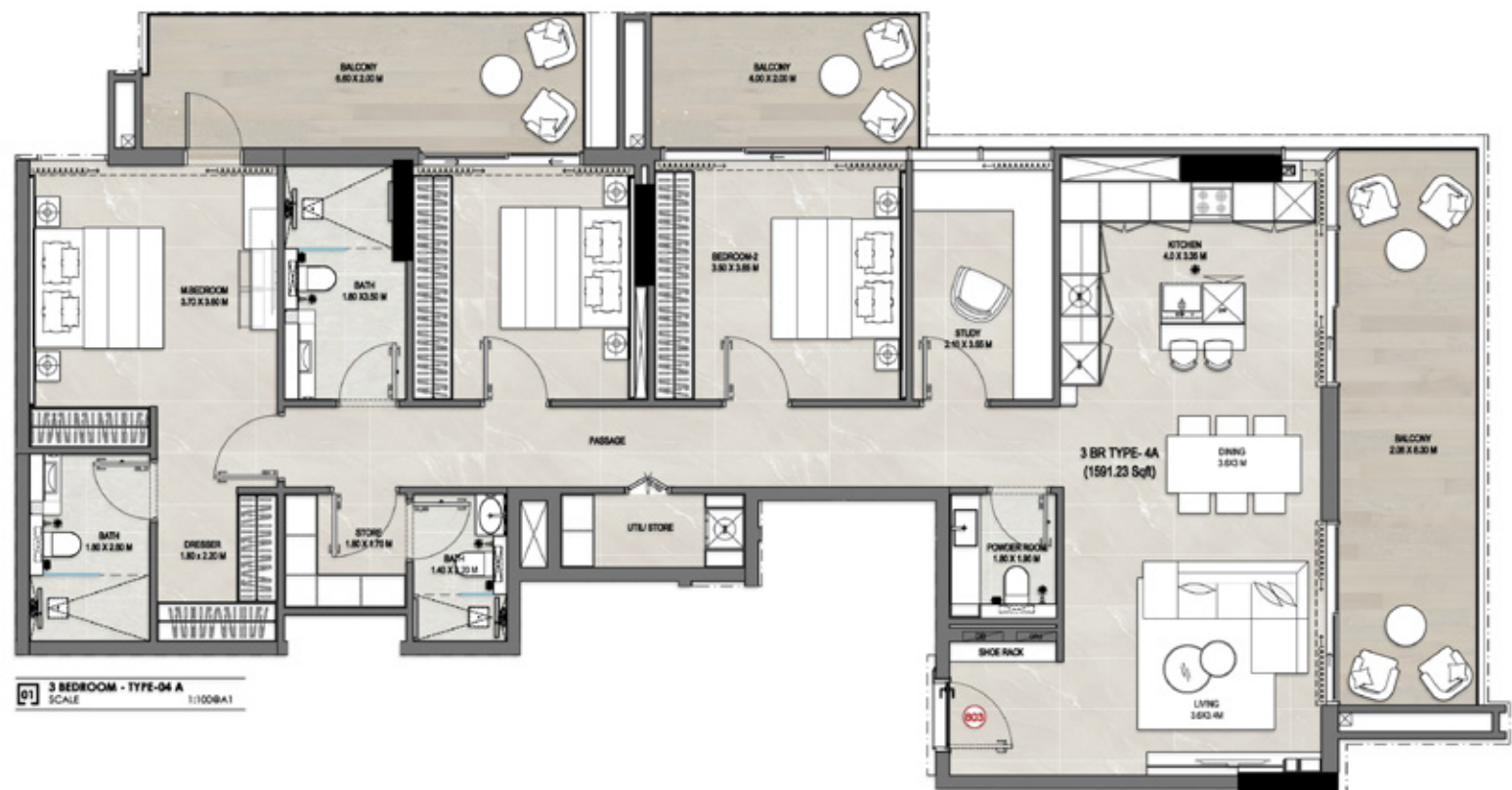


3 Bedroom Type 04A

Level 8-9
Series 03

Total Saleable Area

Suite: 1601.79 sq. ft
Balcony: 417.96 sq. ft
Total: 2019.75 sq. ft



3 Bedroom Type 05

Level 8-9
Series 04

Total Saleable Area

Suite: 1716.18 sq. ft
Balcony: 420.77 sq. ft
Total: 2136.95 sq. ft





A Place to Call Home,
a Community to
Belong To



GATE ROYALE

RESIDENCES

by

BARON DEVELOPMENT