



SOBHA SEAHAVEN

TOWER C

SOBHA  
REALTY

THE ART OF THE DETAIL



## Superheading the SOBHA WAY

Sobha Realty redefines the concept of luxury residential living with a repertoire of real estate projects across Dubai.

With razor-sharp focus on quality and innovation, it has created a plethora of iconic spaces such as extravagant palaces, ornate mosques, cutting edge campuses and ultra-luxurious communities with grand villas and apartments.

Pioneering the 'Backward Integration' model in real estate, Sobha Realty employs in-house mastery to create a unique offering of fine living that extends beyond the customer's expectations.

Backward Integration  
*Forward Thinking*

- DESIGN  
Efficiently conceptualized.
- ENGINEERING & CONTRACTING  
Minutely scrutinized to precision.
- MATERIAL SOURCING  
Usage of world-class technology for manufacturing.
- CRAFTSMANSHIP  
Impeccable attention to detail from conceptualization to delivery
- QUALITY CONTROL  
Setting a new benchmark globally.





of Sea, Sun & Sky  
is life itself.



Sleep to the symphony of the gentle sea  
waves of the *Arabian Gulf.*



Awaken to a new world  
of possibilities *Every day.*

Smell the cool *Fresh air*  
Soak in the sun's rays



# Exclusivity and Inclusivity



COME TOGETHER



Presenting Tower C

Part of the Seahaven trilogy of *Luxury* living.

It's not just a place to live. It's a place to experience life itself.







*Thrice* is nice

The power of the trilogy lies in the harmony of three distinct elements that come together to create something spectacular.

Each aspect, with its own identity, creates a cohesive and unique world of unparalleled living.

Trilogy by the *Sea* Rising from Dubai Marina, Tower C of Sobha Seahaven complements Towers A & B, overlooking the Palm Jumeirah, Dubai Harbour and Ain Dubai.

*You are in the company of landmarks.*

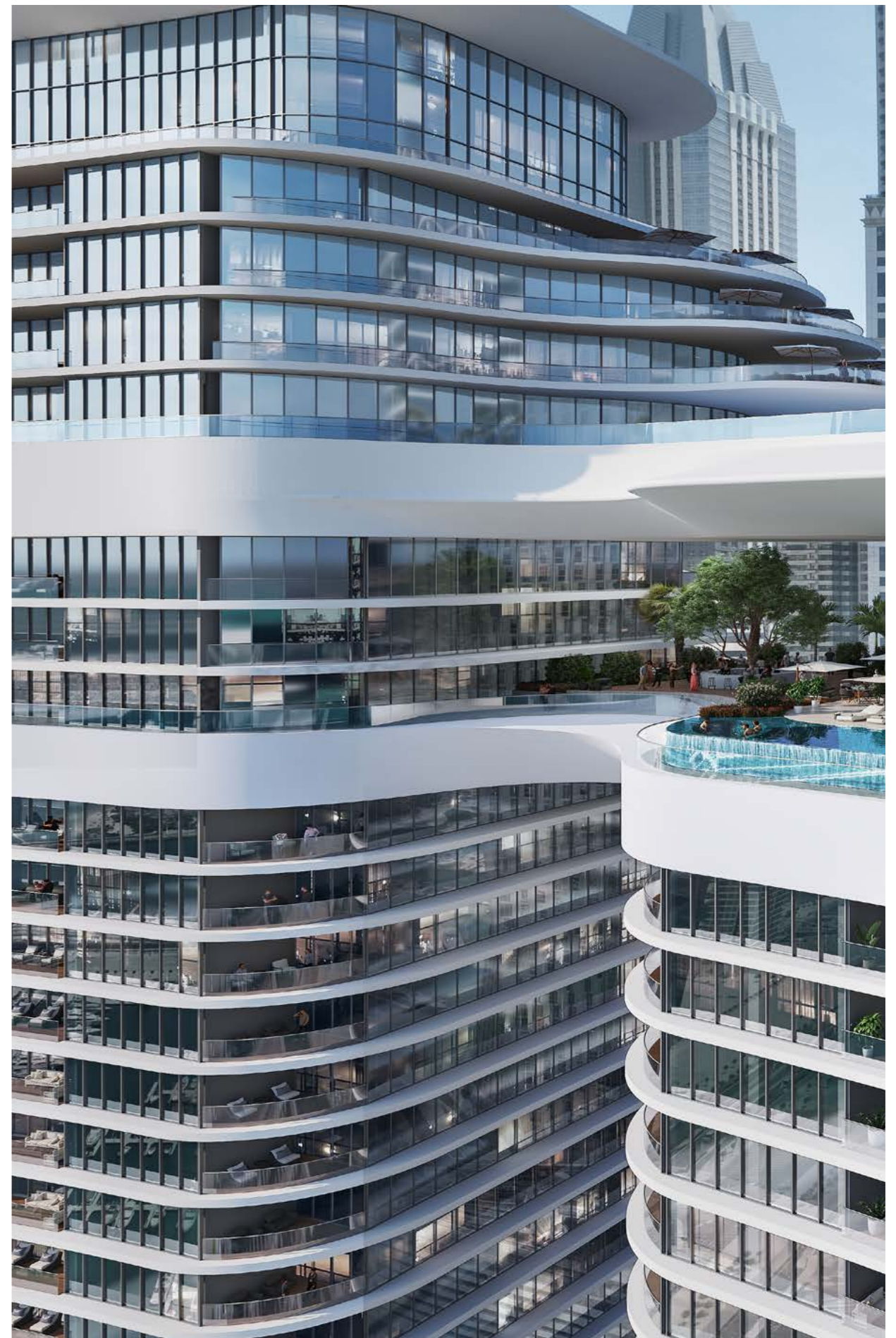




Uniquely *Yours* As you step inside Seahaven Tower C, you enter a new world of super luxury. The One, Two and three-bedrooms units are designed to offer breathtaking ocean views that mesmerise.

With only Seven units per floor, each is designed to provide the ultimate luxury living from apartments. Every detail is expertly crafted for elegance and sophistication.

*Come home to your private haven.*










Everything by *Choice* The thrill of exclusivity takes hold from the moment you step into the lobby. With 24-hour security, your privacy and safety are closely guarded. Your guests are ushered into a separate lobby.

*Nothing is left to chance. Everything is by design*



Everything in your *Grasp* From high-end shopping malls to world-class restaurants and entertainment venues, you'll have everything you need at your doorstep. Enjoy the convenience of a prime location without compromising on style and comfort.

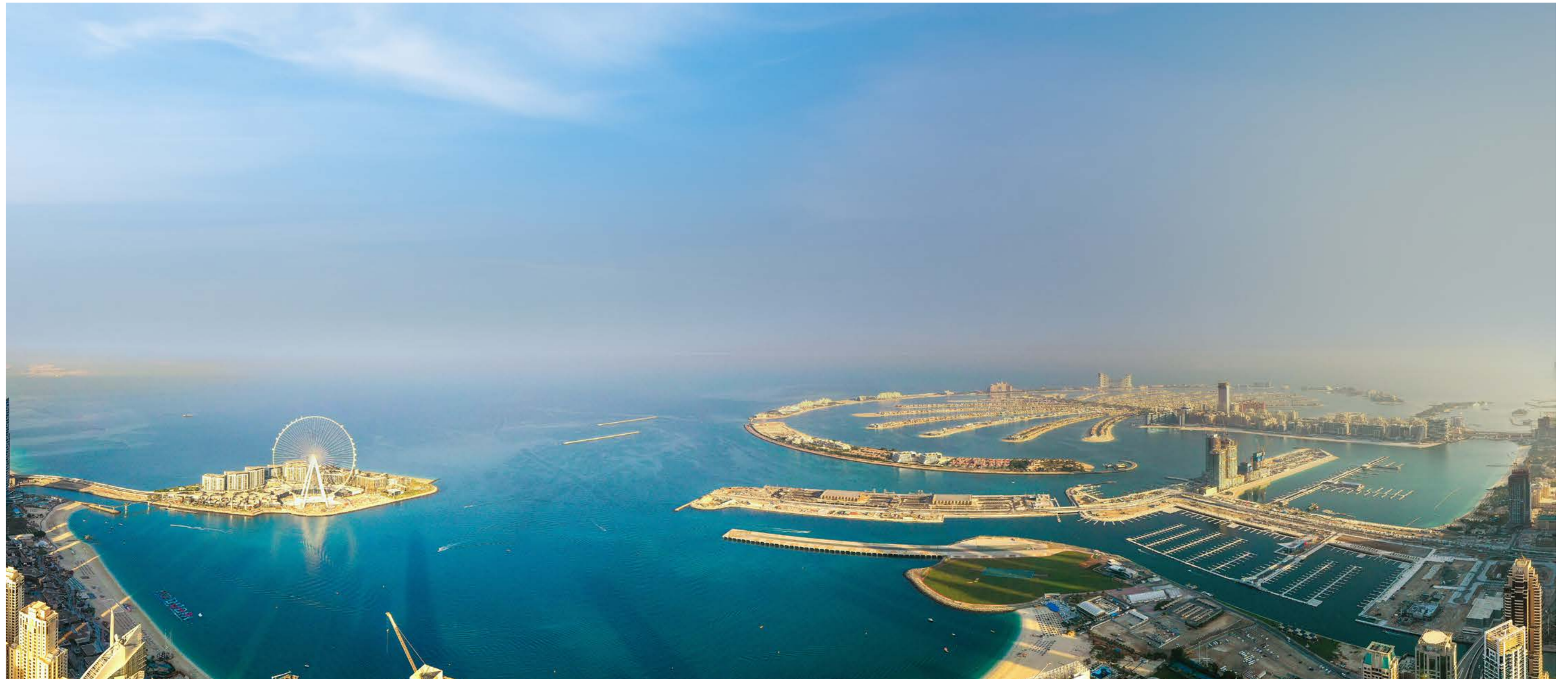
-  Close to two international airports
-  Ain Dubai
-  Retail malls
-  International Cruise terminal

-  Public beaches
-  Leisure and entertainment
-  Finest restaurants
-  Marina and Harbour

## Sea the Difference

Enjoy unparalleled 270° to 360° views of the sea, skyline, and shore with clear views of the world-famous Palm Jumeirah.

Wake up to breathtaking views of Dubai Marina and the Arabian Sea from your private balcony. Relax in your spacious living room with floor-to-ceiling windows offering unobstructed views.



Pick *Your Mood.*













*Everything is* **Essential**

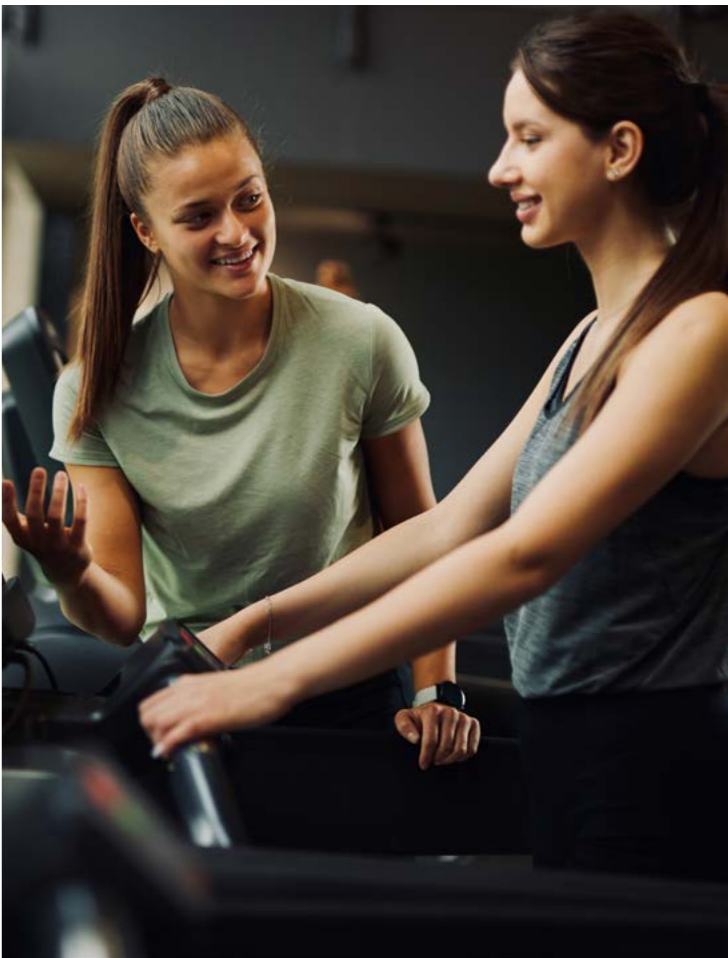
At Tower C, amenities become essential. Luxuries become necessities. It's your private club resort with indoor and outdoor settings exclusively for a few residents.



Café with dining area



Family Zone with barbeque area



Health club with Sauna & Steam



Indoor & Outdoor Cinema



Indoor & outdoor gym



Indoor Game Room



Pool Deck & Day Beds, Infinity edge leisure pool facing the harbour



kid's pool



Yoga Zone / Meditation Zone



## *Live* in style everyday

Tower C's ultra-luxury interior design is where indoors and outdoors meet to create a space that exudes opulence, elegance, and sophistication. Every detail is impeccably designed to exceed your expectations. It uses high-quality natural materials, bespoke furniture, and intricate detailing to create a timeless masterpiece.

### Floor Finishes

Large format Porcelain tiles in the main living spaces

### Wall Finishes

Acrylic Emulsion paint on Unit walls with flushed skirting.  
Porcelain tile on Toilet walls

### External Façade

High-performance double-glazed system and Glass railing

### Fixture & Fittings

Millwork to be finished with Veneer/ Laminare/ Melamine

### White Goods

Fully fitted Kitchen with Refrigerator, Oven, Gas Hob & Hood, Washer-Dryer and Dish washer from reputed brands like Miele or equivalent

### MEP

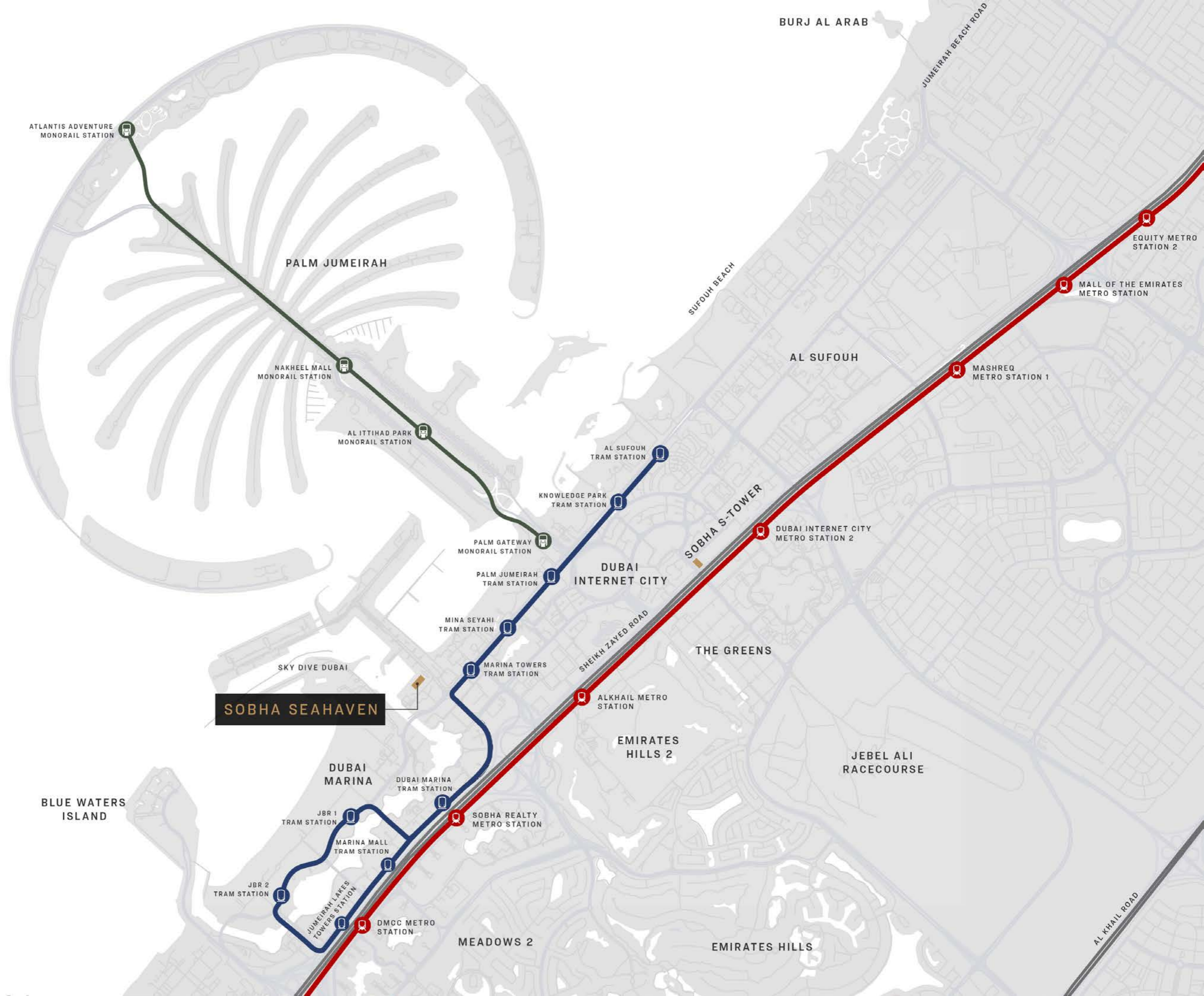
Single slot diffuser and Track lighting

### Sanitary ware

Smart WC. Sanitary fixtures & fittings from reputed brands like Kohler or equivalent

### Home Automation

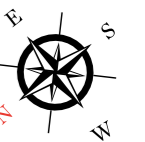
Smart Home automation enabled



Location Plan



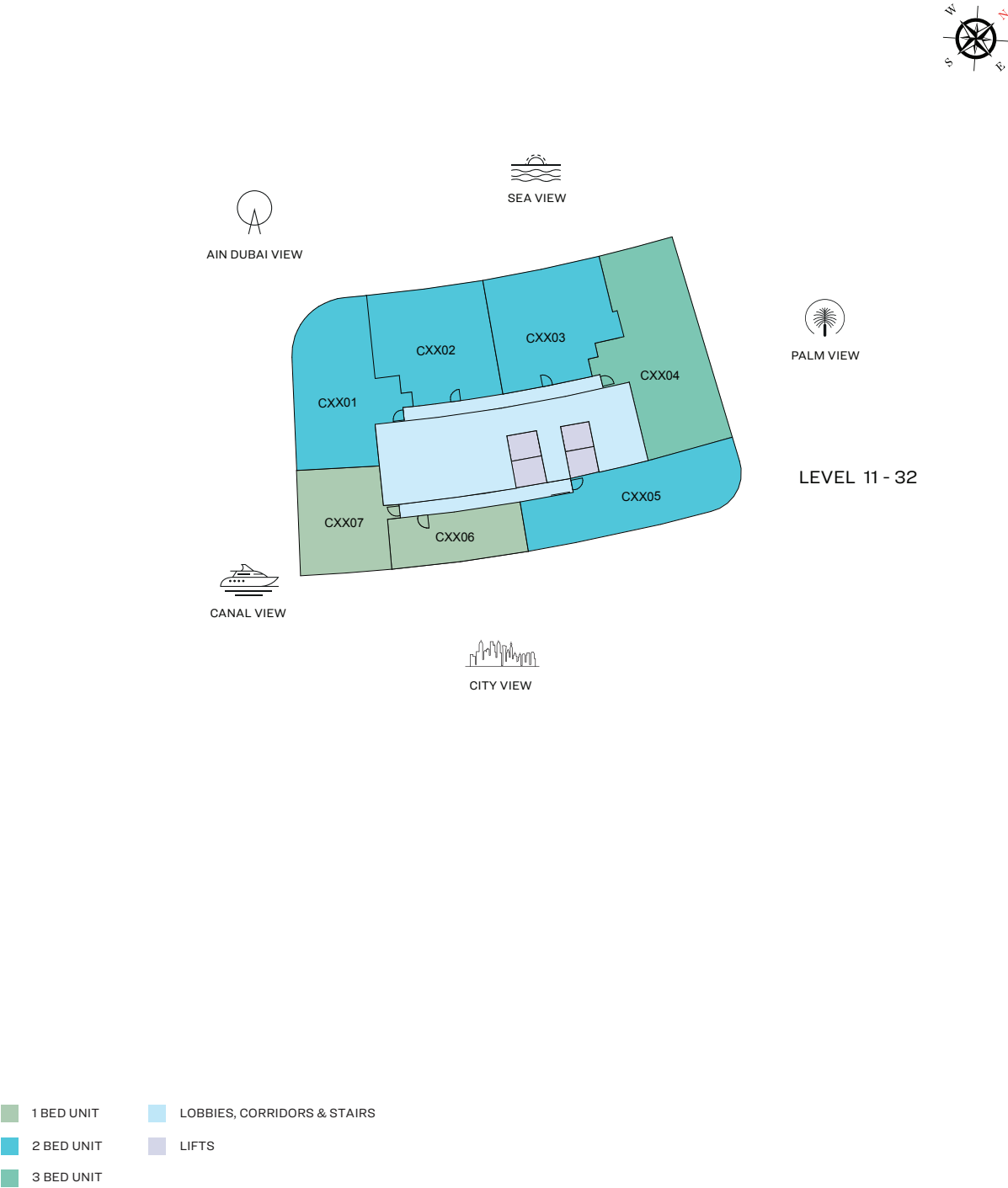
# Site Plan



## F L O O R   P L A N S

FLOOR PLAN LAYOUT

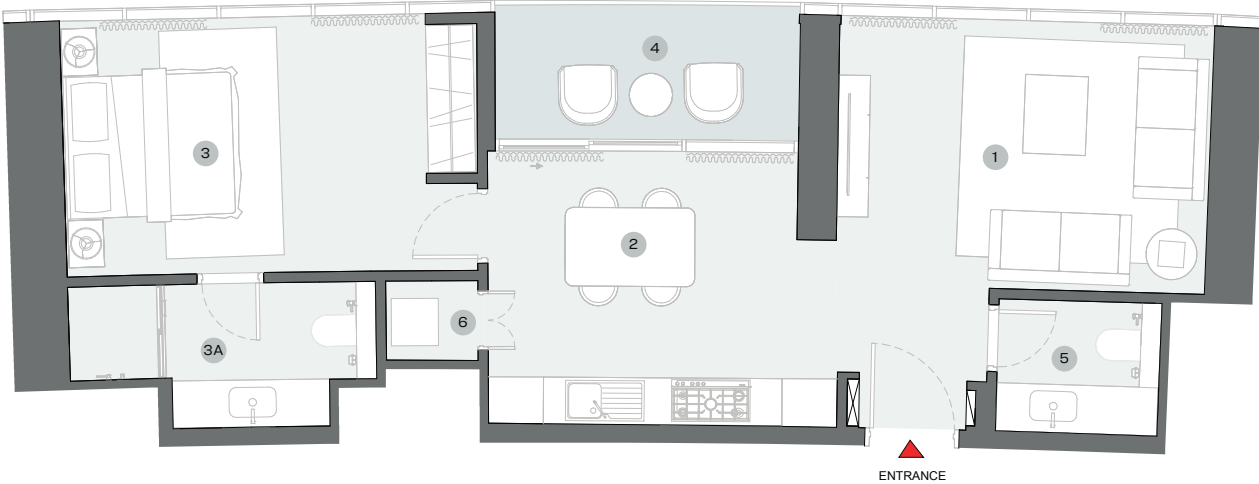
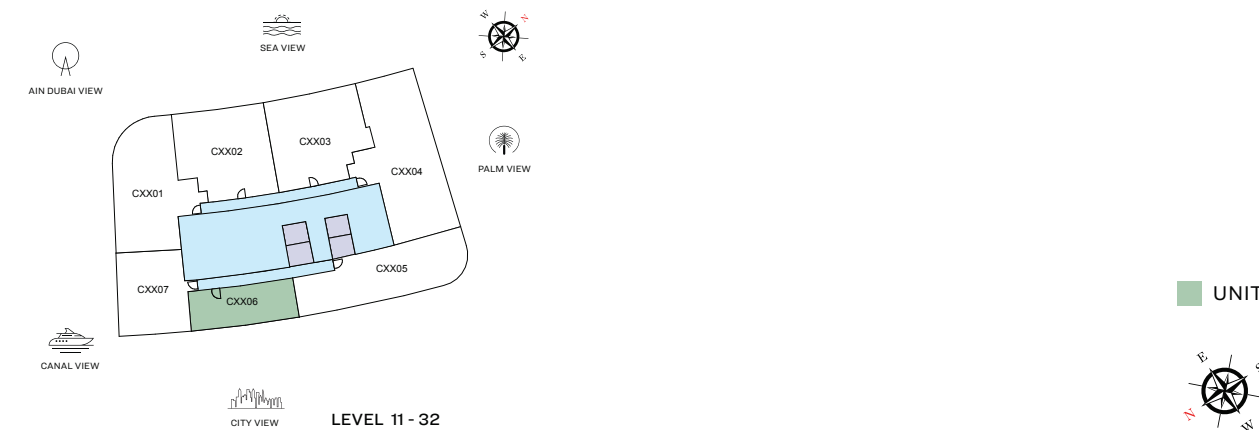
TOWER C



Disclaimer: 1. All dimensions are in metric, measured to wall finishes. 2. All materials, dimensions & drawings are approximate. 3. Information is subject to change without notice, at developer's absolute discretion. 4. Actual area may vary from the stated area. 5. Drawing are not to scale. 6. All images used are for illustrative purpose only and do not represent the actual size, features, specifications, fittings and furnishings. 7. The developer reserves the right to make revisions/ alterations, at its absolute discretion, without any liability whatsoever.

1 BEDROOM APARTMENT  
TYPE A (with powder room + balcony)

SUITE = 769.30 SQ.FT  
BALCONY = 81.91 SQ.FT  
TOTAL = 851.21 SQ.FT



List of unit numbers with this unit plan:

VIEWS

1

LIVING - 4700 X 3400

2

KITCHEN/DINING - 3950 X 3450

3

BEDROOM - 4600 X 3250

3A

BATHROOM - 3900 X 1850

4

BALCONY - 3900 X 1700

5

POWDER - 2050 X 1700

6

UTILITY - 1150 X 1000

Marina Skyline

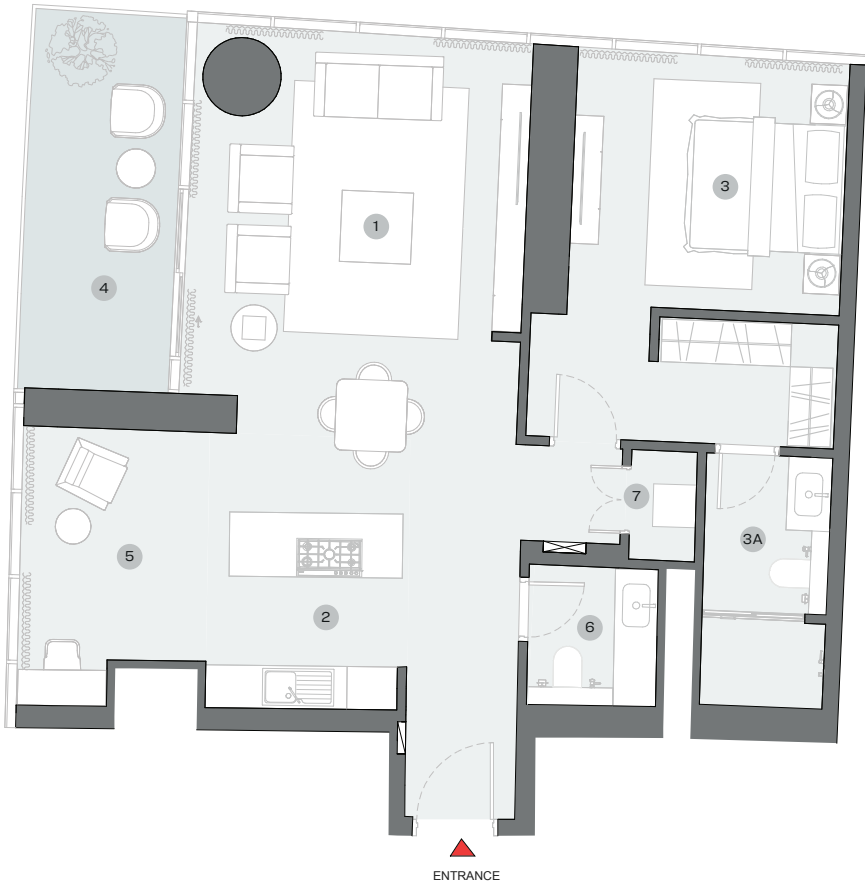
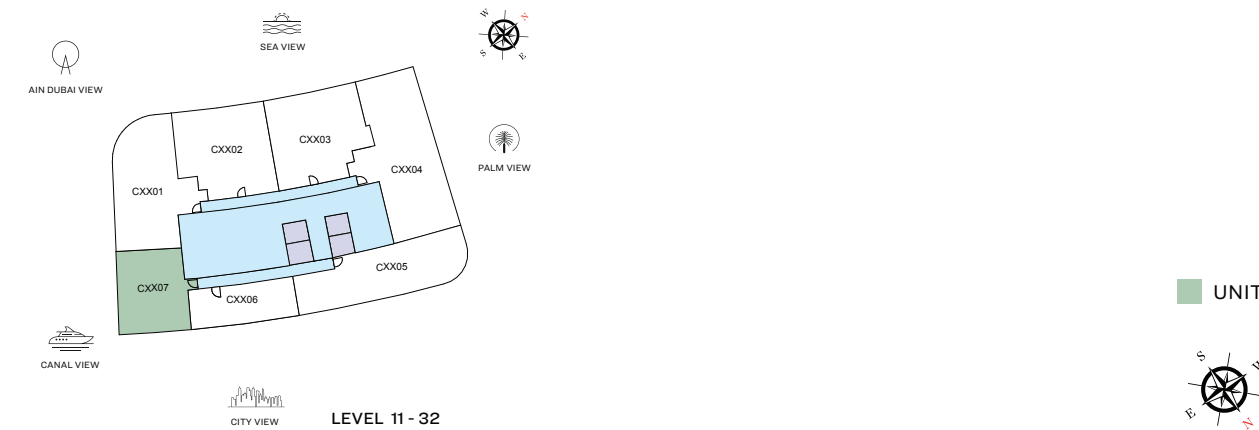
C1106, C1206, C1306, C1406, C1506, C1606, C1706, C1806, C1906, C2006, C2106, C2206, C2306, C2406, C2506, C2606, C2706, C2806, C2906, C3006, C3106, C3206

Disclaimer: 1. All dimensions are in metric, measured to wall finishes. 2. All materials, dimensions & drawings are approximate. 3. Information is subject to change without notice, at developer's absolute discretion. 4. Actual area may vary from the stated area. 5. Drawing are not to scale. 6. All images used are for illustrative purpose only and do not represent the actual size, features, specifications, fittings and furnishings. 7. The developer reserves the right to make revisions/ alterations, at its absolute discretion, without any liability whatsoever.

1 BEDROOM APARTMENT

TYPE B (with powder room + study room + balcony)

SUITE = 1,107.93 SQ.FT  
BALCONY = 131.21 SQ.FT  
TOTAL = 1,239.14 SQ.FT



List of unit numbers with this unit plan:

VIEWS

Marina Skyline

C1107, C1207, C1307, C1407, C1507, C1607, C1707, C1807, C1907, C2007, C2107, C2207, C2307, C2407, C2507, C2607, C2707, C2807, C2907, C3007, C3107, C3207

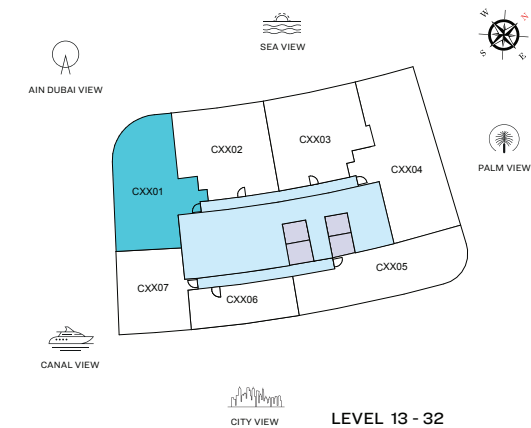
DIMENSIONS (MM)

1	LIVING - 4700 X 5200	3	BEDROOM - 3800 X 3550	5	STUDY - 2600 X 3200
2	KITCHEN/DINING - 2800 X 4400	3A	BATHROOM - 1700 X 3550	6	POWDER - 1800 X 1950
		4	BALCONY - 2150 X 5300	7	UTILITY - 900 X 1550

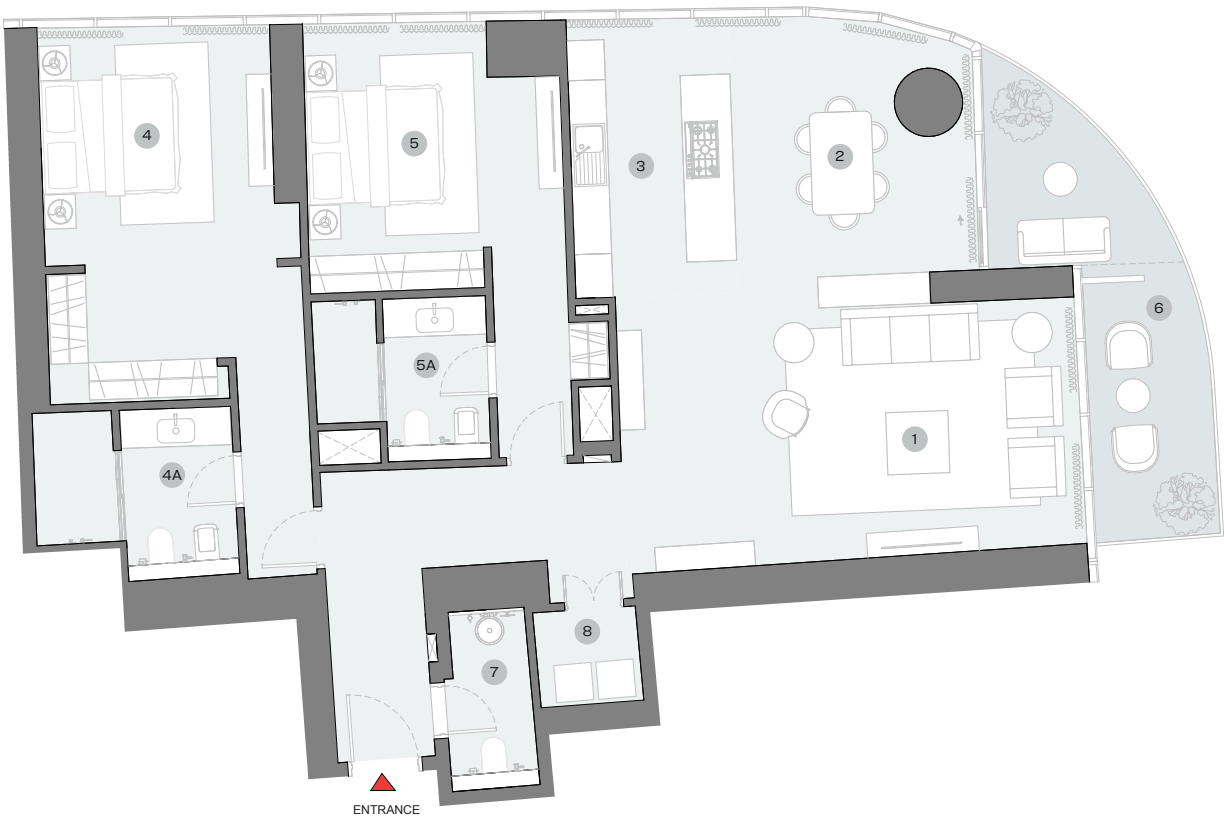
Disclaimer: 1. All dimensions are in metric, measured to wall finishes. 2. All materials, dimensions & drawings are approximate. 3. Information is subject to change without notice, at developer's absolute discretion. 4. Actual area may vary from the stated area. 5. Drawing are not to scale. 6. All images used are for illustrative purpose only and do not represent the actual size, features, specifications, fittings and furnishings. 7. The developer reserves the right to make revisions/ alterations, at its absolute discretion, without any liability whatsoever.

2 BEDROOM APARTMENT  
TYPE A (with powder room + balcony)

SUITE = 1,728.04 SQ.FT  
BALCONY = 186.11 SQ.FT  
TOTAL = 1,914.15 SQ.FT



UNIT



List of unit numbers with this unit plan:

VIEWS

Blue waters, Ain Dubai, Palm Jumeirah, Harbour, Sea, Skydive  
C1301, C1401, C1501, C1601, C1701, C1801, C1901, C2001, C2101, C2201, C2301, C2401, C2501, C2601, C2701, C2801, C2901, C3001, C3101, C3201

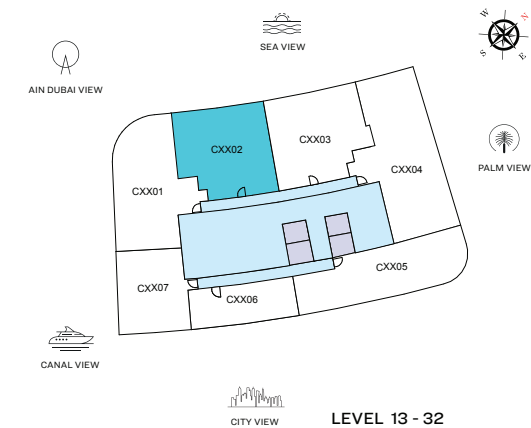
DIMENSIONS (MM)

1 LIVING - 7400 X 4300	4 BEDROOM 1 - 3750 X 5350	6 BALCONY - 2000 X 4700
2 DINING - 3900 X 4400	4A BATHROOM 1 - 3200 X 2750	7 POWDER - 1400 X 2900
3 KITCHEN - 2600 X 4500	5 BEDROOM 2 - 4100 X 3650	8 UTILITY - 1650 X 1500
	5A BATHROOM 2 - 2800 X 2600	

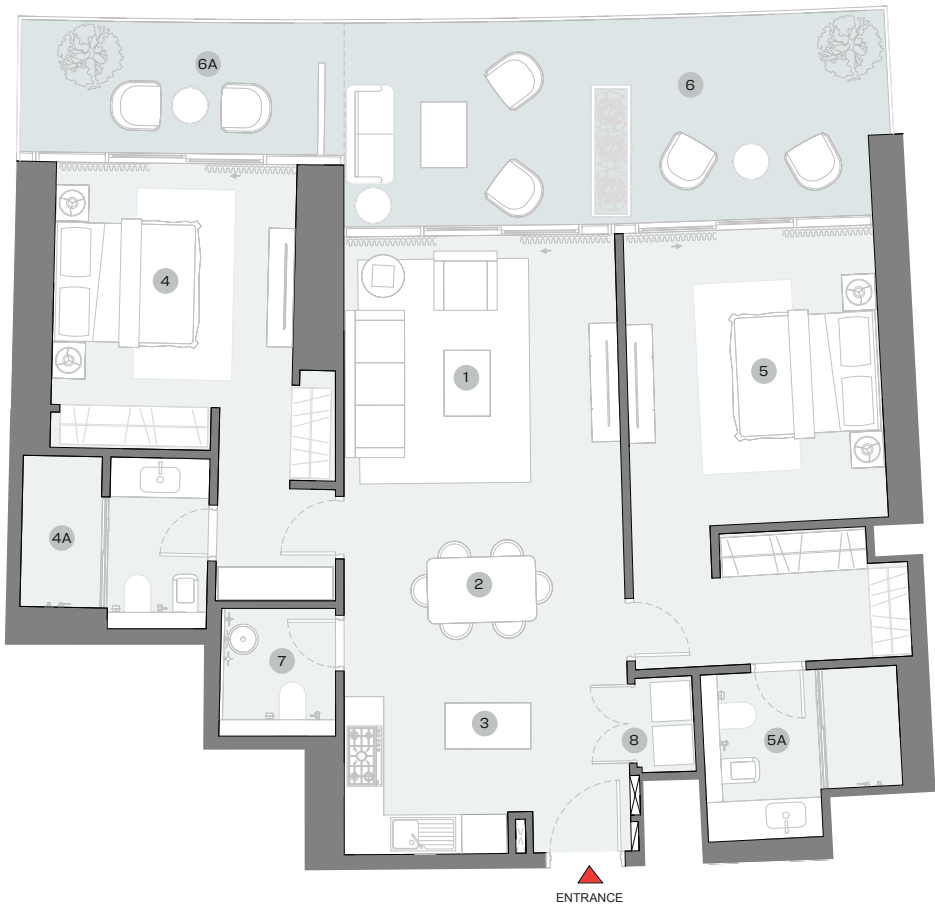
Disclaimer: 1. All dimensions are in metric, measured to wall finishes. 2. All materials, dimensions & drawings are approximate. 3. Information is subject to change without notice, at developer's absolute discretion. 4. Actual area may vary from the stated area. 5. Drawing are not to scale. 6. All images used are for illustrative purpose only and do not represent the actual size, features, specifications, fittings and furnishings. 7. The developer reserves the right to make revisions/ alterations, at its absolute discretion, without any liability whatsoever.

2 BEDROOM APARTMENT  
TYPE B (with powder room + balcony)

SUITE = 1,287.47 SQ.FT  
BALCONY = 396.00 SQ.FT  
TOTAL = 1,683.47 SQ.FT



UNIT



List of unit numbers with this unit plan:

VIEWS

Palm Jumeirah, Harbour, Sea  
C1302, C1402, C1502, C1602, C1702, C1802, C1902, C2002, C2102, C2202, C2302, C2402, C2502, C2602, C2702, C2802, C2902, C3002, C3102, C3202

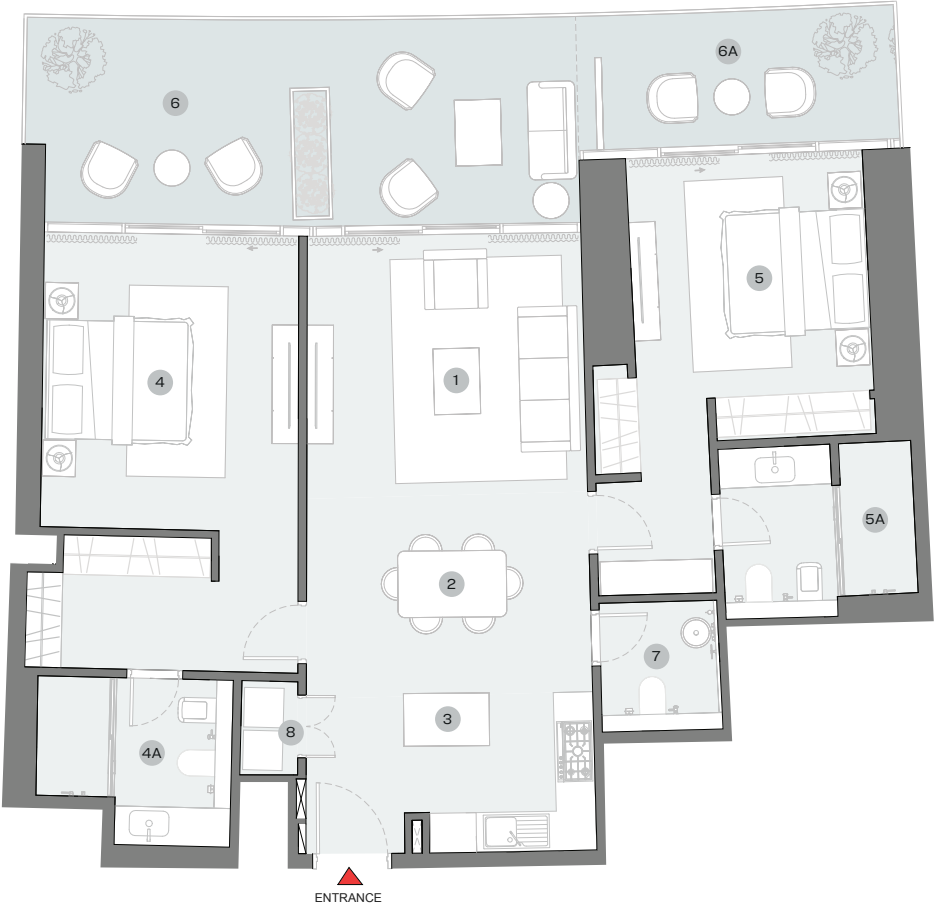
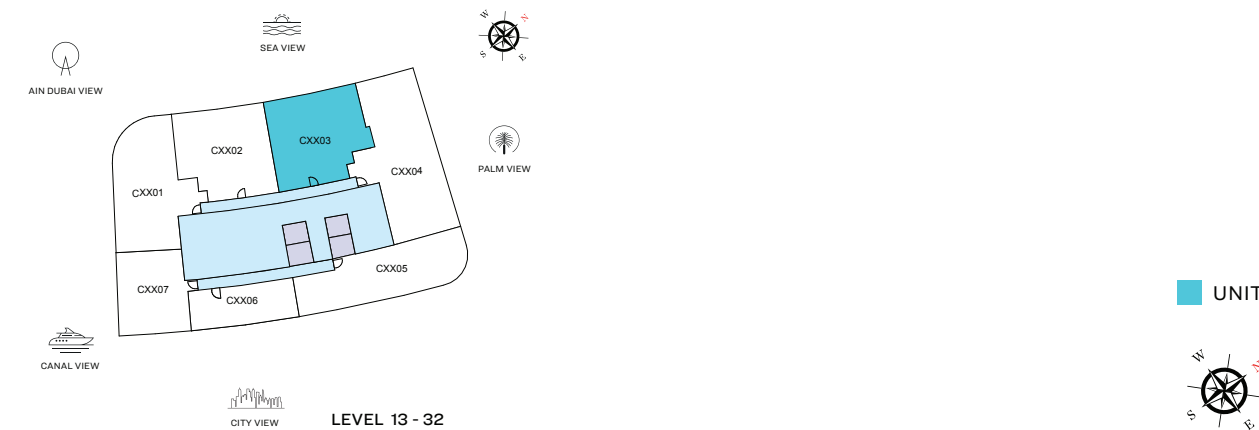
DIMENSIONS (MM)

1 LIVING - 4200 X 4000	4 BEDROOM 1 - 3600 X 3700	6 BALCONY - 8250 X 3100
2 DINING - 4250 X 2800	4A BATHROOM 1 - 2800 X 2600	6A BALCONY 2 - 4650 X 2000
3 KITCHEN - 2850 X 2500	5 BEDROOM 2 - 3800 X 4450	7 POWDER - 1750 X 1950
	5A BATHROOM 2 - 3000 X 2550	8 UTILITY - 850 X 1450

Disclaimer: 1. All dimensions are in metric, measured to wall finishes. 2. All materials, dimensions & drawings are approximate. 3. Information is subject to change without notice, at developer's absolute discretion. 4. Actual area may vary from the stated area. 5. Drawing are not to scale. 6. All images used are for illustrative purpose only and do not represent the actual size, features, specifications, fittings and furnishings. 7. The developer reserves the right to make revisions/ alterations, at its absolute discretion, without any liability whatsoever.

2 BEDROOM APARTMENT  
TYPE C (with powder room + balcony)

SUITE = 1,288.44 SQ.FT  
BALCONY = 398.59 SQ.FT  
TOTAL = 1,687.03 SQ.FT



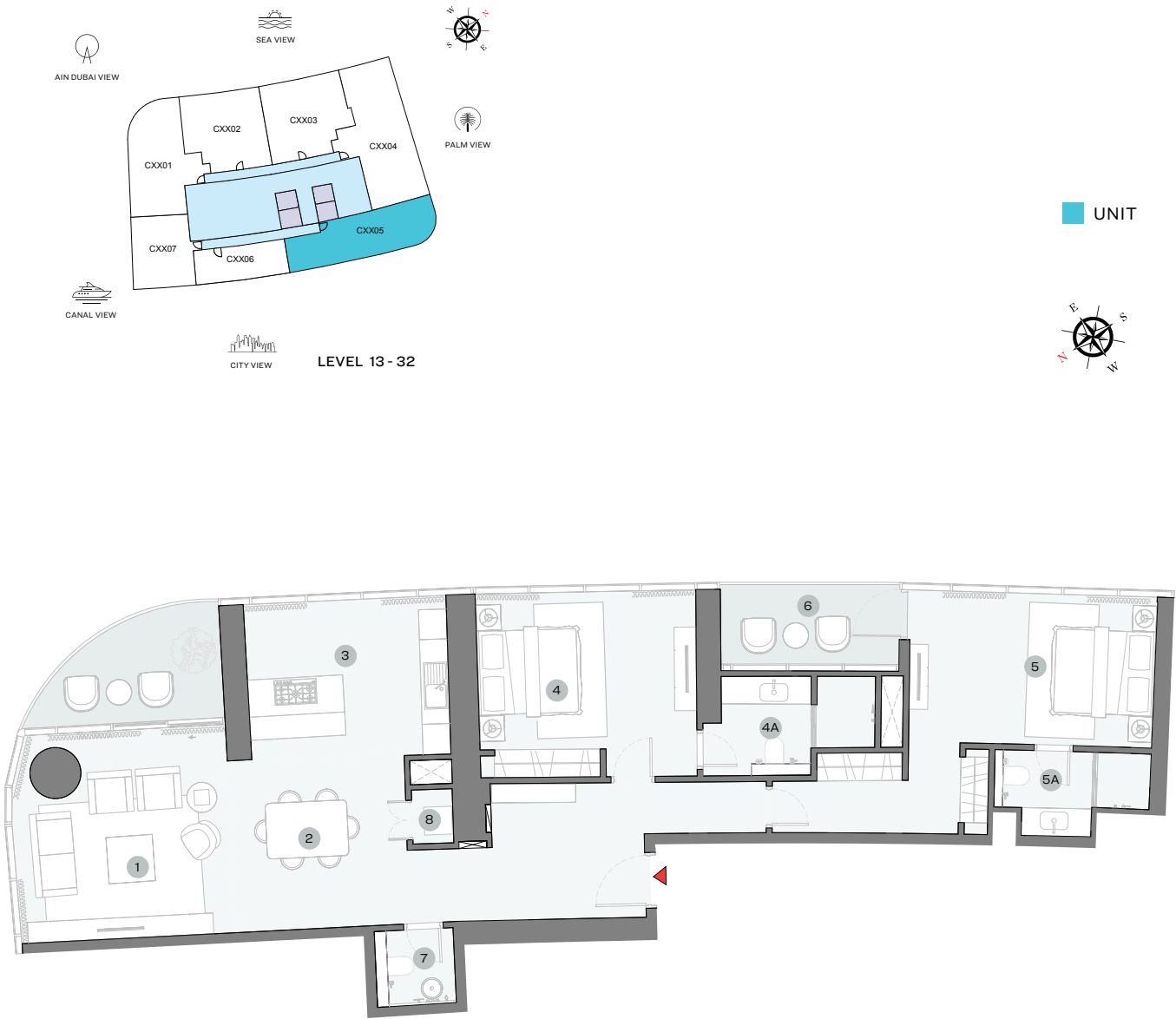
List of unit numbers with this unit plan:

VIEWS			DIMENSIONS (MM)		
Palm Jumeirah, Harbour, Sea			1 LIVING - 4200 X 4000	4 BEDROOM 1 - 3850 X 4450	6 BALCONY - 8450 X 3100
			2 DINING - 4300 X 2800	4A BATHROOM 1 - 3000 X 2550	6A BALCONY 2 - 4900 X 2000
C1303, C1403, C1503, C1603, C1703, C1803, C1903, C2003, C2103, C2203, C2303, C2403, C2503, C2603, C2703, C2803, C2903, C3003, C3103, C3203			3 KITCHEN - 2850 X 2500	5 BEDROOM 2 - 3600 X 3700	7 POWDER - 1800 X 1950
				5A BATHROOM 2 - 2900 X 2600	8 UTILITY - 850 X 1450

Disclaimer: 1. All dimensions are in metric, measured to wall finishes. 2. All materials, dimensions & drawings are approximate. 3. Information is subject to change without notice, at developer's absolute discretion. 4. Actual area may vary from the stated area. 5. Drawing are not to scale. 6. All images used are for illustrative purpose only and do not represent the actual size, features, specifications, fittings and furnishings. 7. The developer reserves the right to make revisions/ alterations, at its absolute discretion, without any liability whatsoever.

2 BEDROOM APARTMENT  
TYPE D (with powder room + balcony)

SUITE = 1,534.61 SQ.FT  
BALCONY = 188.26 SQ.FT  
TOTAL = 1,722.87 SQ.FT



List of unit numbers with this unit plan:

VIEWS

Marina Skyline  
C1305, C1405, C1505, C1605, C1705, C1805, C1905, C2005, C2105, C2205, C2305, C2405, C2505, C2605, C2705, C2805, C2905, C3005, C3105, C3205

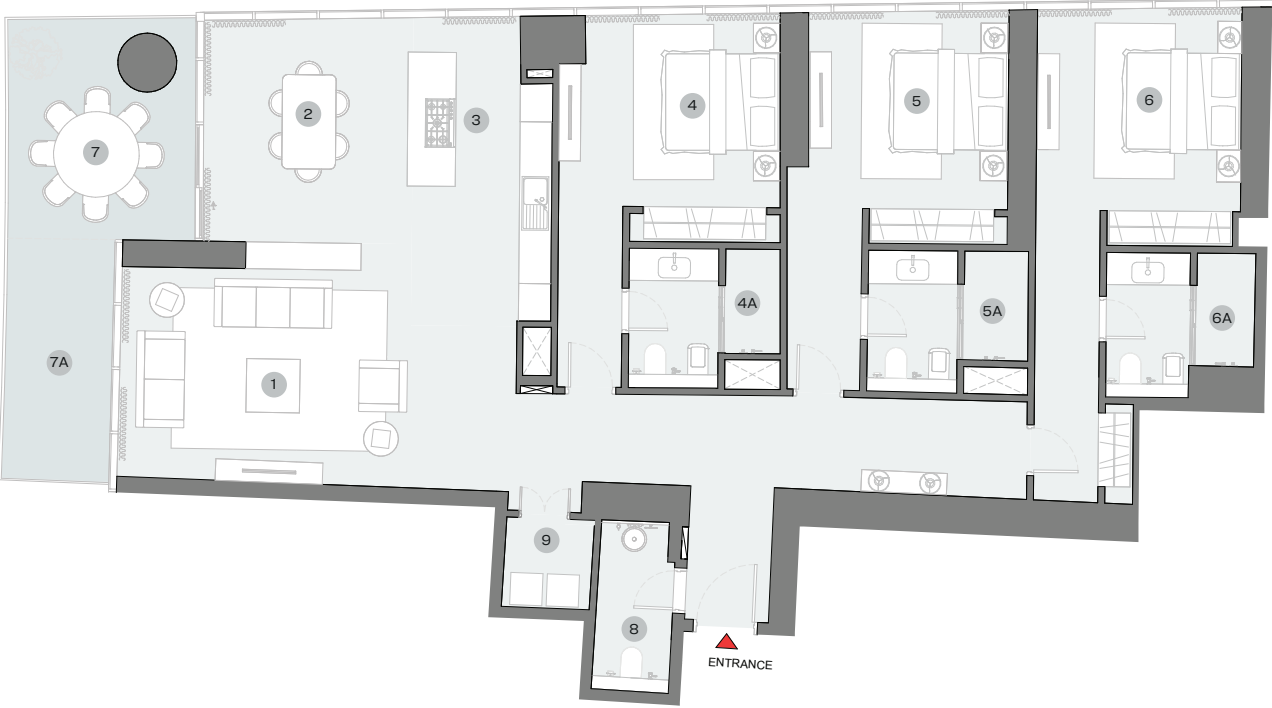
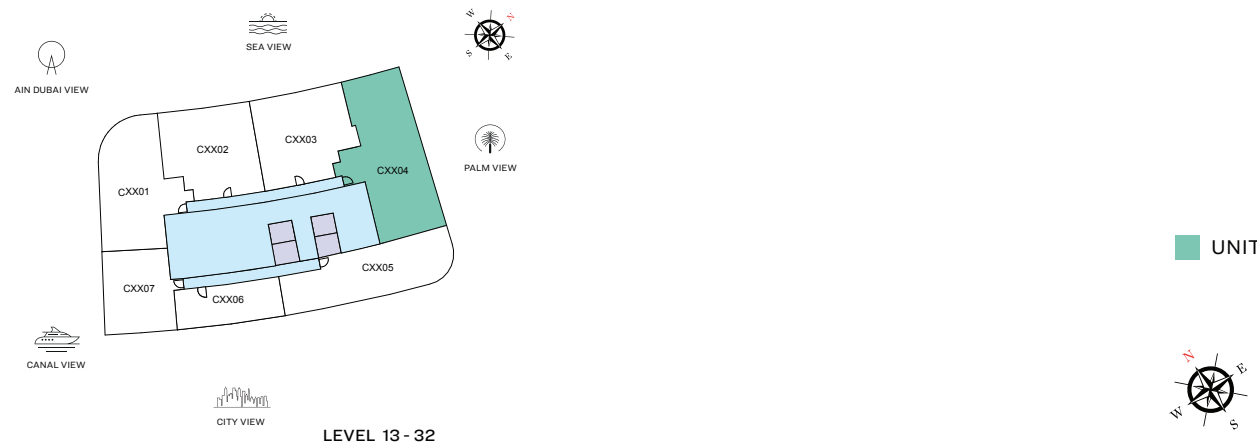
DIMENSIONS (MM)

1 LIVING - 4650 X 4500	4 BEDROOM 1 - 4650 X 3350	6 BALCONY- 3850 X 1700
2 DINING - 3750 X 3700	4A BATHROOM 1 - 3300 X 2100	7 POWDER - 1700 X 1650
3 KITCHEN - 4300 X 3350	5 BEDROOM 2 - 5200 X 3250	8 UTILITY - 850 X 1150
	5A BATHROOM 2 - 3400 X 1850	

Disclaimer: 1. All dimensions are in metric, measured to wall finishes. 2. All materials, dimensions & drawings are approximate. 3. Information is subject to change without notice, at developer's absolute discretion. 4. Actual area may vary from the stated area. 5. Drawing are not to scale. 6. All images used are for illustrative purpose only and do not represent the actual size, features, specifications, fittings and furnishings. 7. The developer reserves the right to make revisions/ alterations, at its absolute discretion, without any liability whatsoever.

3 BEDROOM APARTMENT  
TYPE A (with powder room + balcony)

SUITE = 2,124.69 SQ.FT  
BALCONY = 271.36 SQ.FT  
TOTAL = 2,396.05 SQ.FT



List of unit numbers with this unit plan:

VIEWS		
Palm Jumeirah, Harbour, Sea		
C1304, C1404, C1504, C1604, C1704, C1804, C1904, C2004, C2104, C2204, C2304, C2404, C2504, C2604, C2704, C2804, C2904, C3004, C3104, C3204		
DIMENSIONS (MM)		
1 LIVING - 7400 X 4250	4A BATHROOM 1 - 2800 X 2650	6A BATHROOM 3 - 2800 X 2700
2 DINING - 3800 X 4400	5 BEDROOM 2 - 3750 X 3650	7 BALCONY - 3500 X 4150
3 KITCHEN - 2700 X 4400	5A BATHROOM 2 - 3000 X 2650	7A BALCONY 2 - 2000 X 4750
4 BEDROOM 1 - 4150 X 3550	6 BEDROOM 3 - 3800 X 3750	8 POWDER - 1400 X 3150
		9 UTILITY - 1650 X 1650

Disclaimer: 1. All dimensions are in metric, measured to wall finishes. 2. All materials, dimensions & drawings are approximate. 3. Information is subject to change without notice, at developer's absolute discretion. 4. Actual area may vary from the stated area. 5. Drawing are not to scale. 6. All images used are for illustrative purpose only and do not represent the actual size, features, specifications, fittings and furnishings. 7. The developer reserves the right to make revisions/ alterations, at its absolute discretion, without any liability whatsoever.

SOBHA  
REALTY