



MILLENNIUM
ATRIA

BUSINESS BAY

WHERE EVERY DREAM HAS A DESTINATION

MILLENIUM ATRIA BUSINESS BAY

Where every dream has a
DESTINATION

Dubai's victory in Expo 2020 ignited a citywide transformation. Having established itself as a global icon with architectural marvels like the Burj Khalifa and Burj Al Arab, Dubai is now poised to become a groundbreaking example of progressive urban development.

WELCOME TO THE SUCCESS STORY
THAT IS DUBAI



DEYAAR'S VISION

Since 2002, Deyaar has left its mark on Dubai's real estate landscape, becoming a leading development force in the region. Deyaar's success has been driven by a shared vision with Dubai. We believe in building a future that reflects the city's ambition.

Deyaar aims to deliver world-class projects and services that add value to Dubai's property landscape. With a strong foothold in Dubai's prominent commercial business district, Business Bay, Deyaar has additionally ventured into major growth corridors and prime locations in the city, including Dubai Marina, Al Barsha, Dubai International Financial Centre, Jumeirah Lake Towers, International Media Production Zone, Dubai Silicon Oasis and TECOM.



YOO



A COMPANY FOUNDED BY
PHILIPPE STARCK & JOHN HITCHCOX

Creators of Inspired
SPACES

The yoo Studio is a dynamic design house with experience of cutting-edge design in over 27 countries. Serving the yoo tribe internationally, the studio has created landmark signature residences and hotels alongside collaborations with yoo Creative Directors. This gives yoo Studio a unique design DNA that could only come from working with the world's leading design visionaries.

The yoo Studio's experience is enhanced by its diversity of over 20 architects, interior and product designers with big imaginations, providing a choice of looks and styles to suit the lifestyles of today's modern dwellers. They only source the best quality fittings and furniture from around the world to create interiors that are imaginative, rare and individual - just like you.

INTERIOR DESIGN BY
yoo
"A COMPANY FOUNDED BY
JOHN HITCHCOX AND PHILIPPE STARCK"

WHERE EVERY DREAM HAS A DESTINATION

A Vibrant Living EXPERIENCE



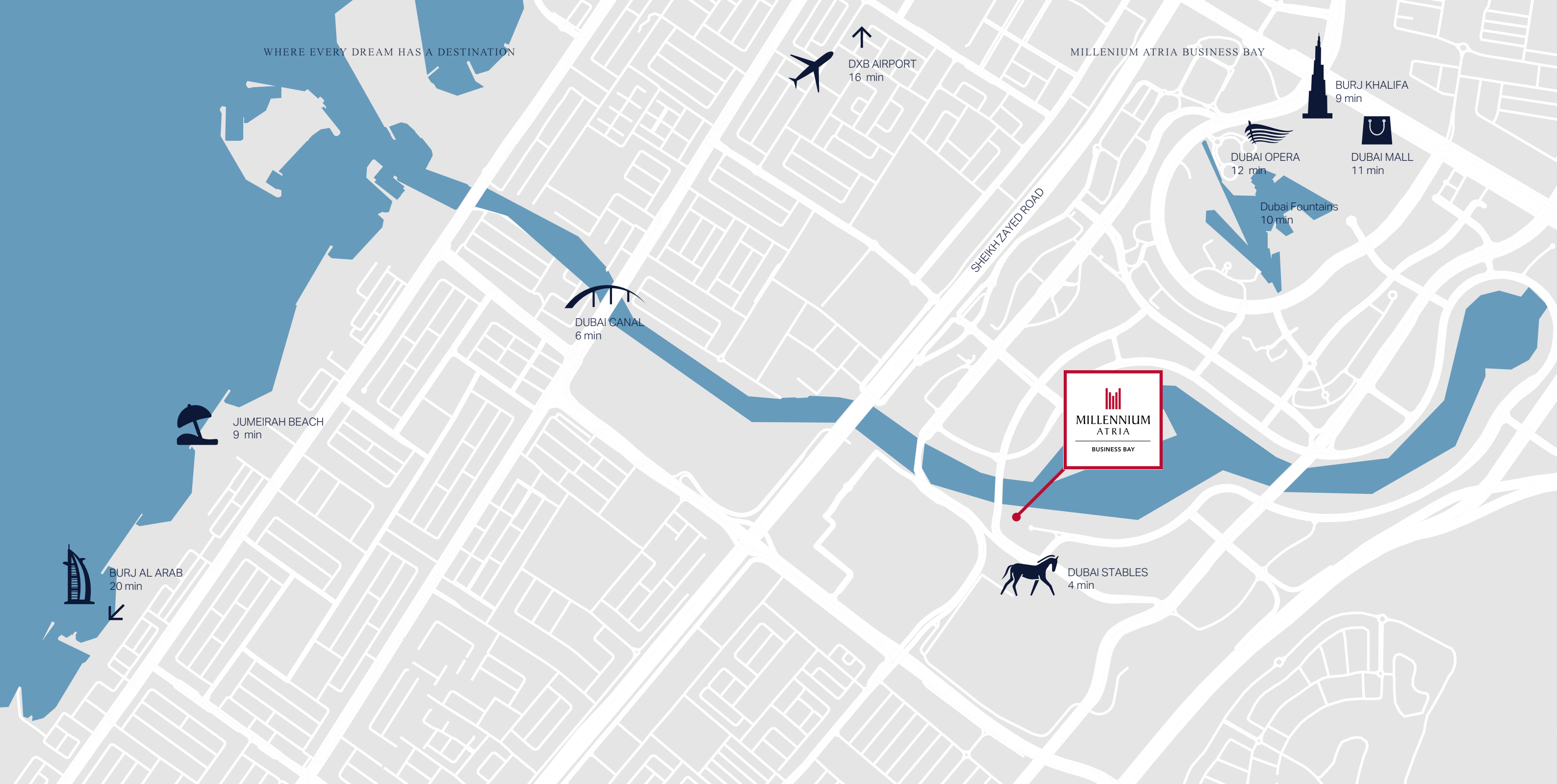
MILLENNIUM ATRIA BUSINESS BAY

Live where vibrant city meets serene bay.
Millennium Atria Business Bay offers more than an address, it's a lifestyle. With contemporary hotel apartments, elegant residential units and thoughtful amenities, this living address is the hallmark of the good life.

Millennium Atria Business Bay comprises of a hotel apartment tower and a 30-storey residential tower, sharing a common podium that constitutes luxurious studio, 1,2 and 3-bedrooms as well as duplex apartments, a retail arena and a centrals park-plaza atrium. The individuality of this lifestyle experience comes from the iconic step-terrace structure, creating a memorable form and an aesthetic façade.

MILLENNIUM ATRIA BUSINESS BAY





Nestled within Dubai's dynamic business district, Millennium Atria Business Bay enjoys conveniences of a centrally-located residence. Business Bay is also one of the most cosmopolitan areas of Dubai, with the world's tallest tower, Burj Khalifa in its neighborhood.

Living at Millenium Atria Business Bay promises you enticing views of this iconic structure, the Business Bay Canal and the scenic Dubai Stables.

*Now you can stay at Millenium Atria
Business Bay in luxurious hotel
apartments, designed by yoo Studio.*



THE HOTEL APARTMENTS

Millenium Atria Business Bay offers studio units, one-bedroom units, two-bedroom units, three-bedroom units, and three-bedroom duplex units.

Every apartment has a characteristic personality and flair, with a key focus on simplicity, functionality and urban elegance paired with the latest smart home technology.

Designed by yoo Studio, a company founded by John Hitchcox and Philippe Starck.

WHERE EVERY DREAM HAS A DESTINATION

Effortless
ELEGANCE

Unlock a World of Service at Millenium Atria Business Bay. Backed by Millenium & Copthorne Hotels, a global hospitality group operating over 120 hotels worldwide, your stay is infused with unparalleled care. With almost 40,000 rooms around the world, and a portfolio of brands that serve different market segments, Millennium & Copthorne is committed to a customer-centric philosophy to deliver the highest levels of service to its guests. Millennium & Copthorne, Middle East & Africa (MEA) is recognized as one of the fastest growing hotel management companies in the region.

THRIVING IN OUR
CONCIERGE'S EXPERTISE

PAGE 14

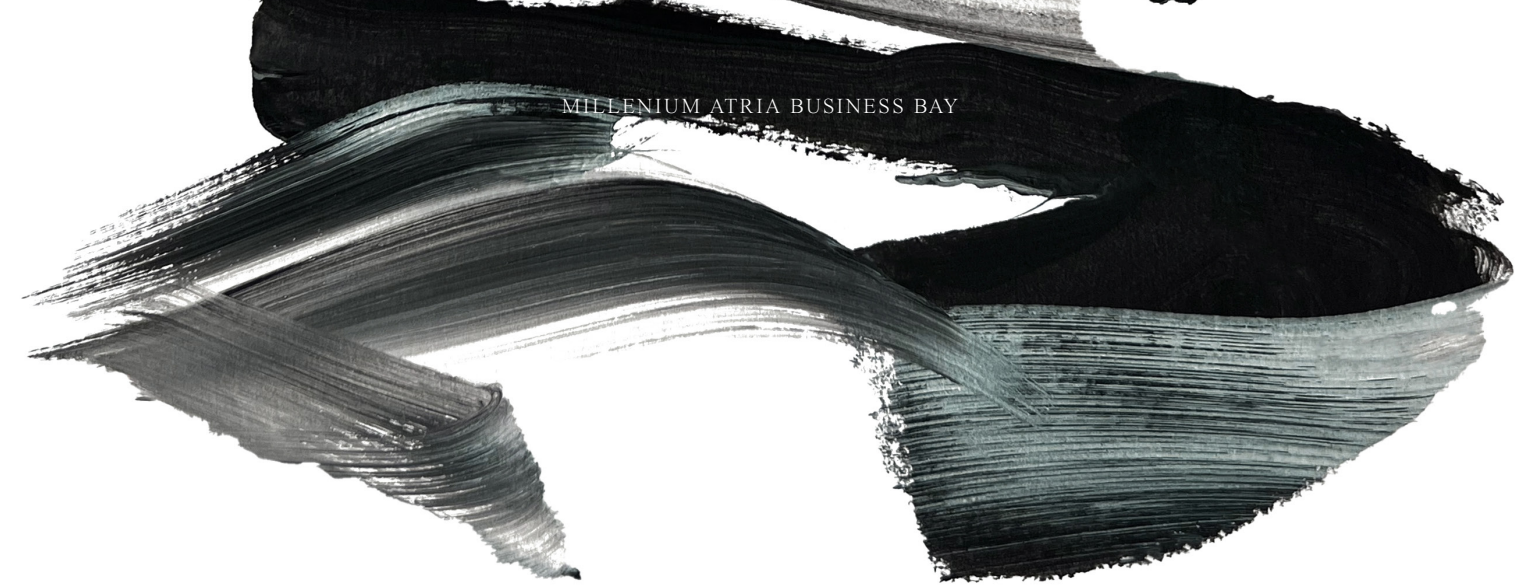
MILLENNIUM ATRIA BUSINESS BAY



PAGE 15



WHERE EVERY DREAM HAS A DESTINATION



MILLENNIUM ATRIA BUSINESS BAY



Step into the CANVAS

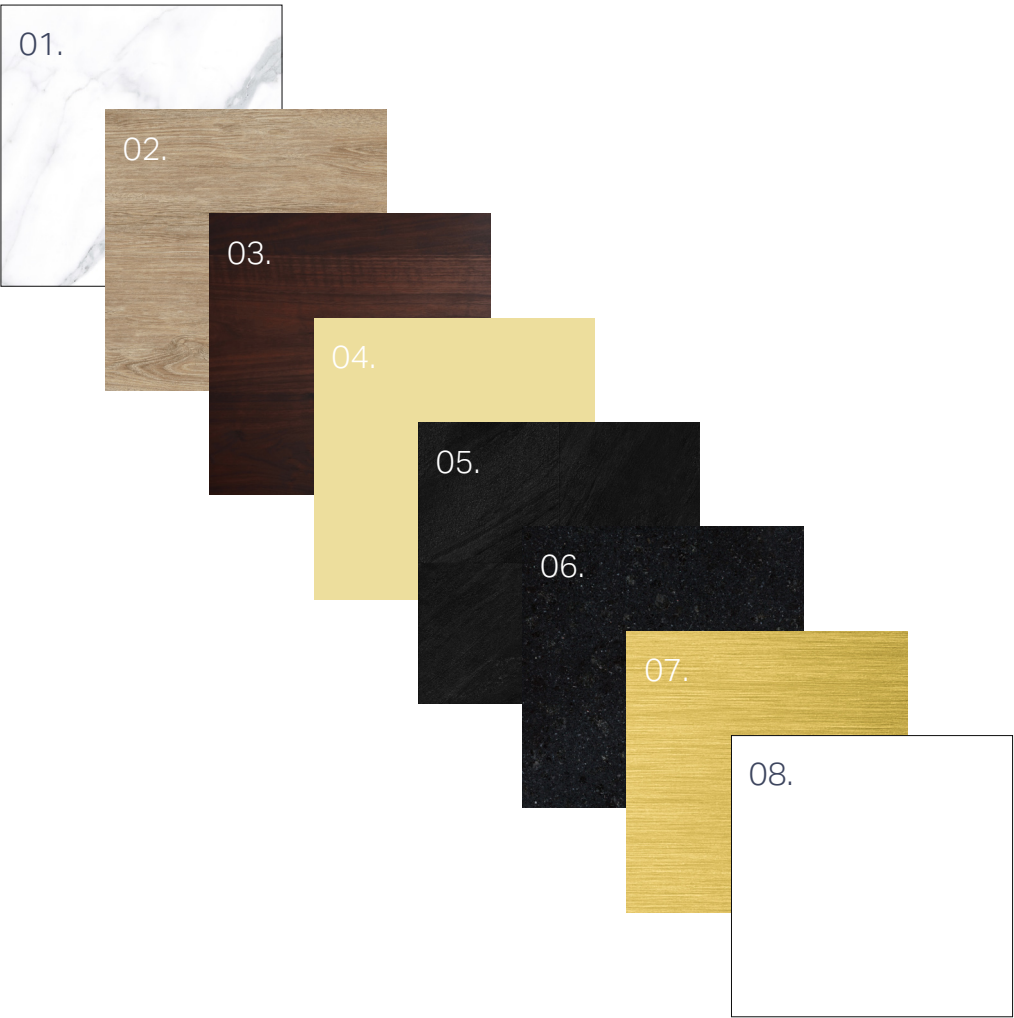
The apartments at Millenium Atria Business Bay are designed in the yoo Studio Culture Style. Where heritage meets modern muse. The Culture palette blends timeless treasures with today's most inspired designs. The result is an intriguing mix with a captivating tension. Rooted in richness and boldness, the Culture palette has a powerful sense of history, but is always looking forward.



PAGE 16



PAGE 17



- 01. Calacatta porcelain marble effect tile for bathrooms and living room
- 02. Porcelain wood effect tile
- 03. Furniture and doors in black american walnut
- 04. Champagne coloured mirror for back splash and large full height mirrors
- 05. Porcelain tiles in black for bathroom borders and maid's room floor
- 06. Black silestone for kitchen work surface
- 07. Polished brass for furniture detailing
- 08. White lacquer RAL 9010 for paint colour on plaster walls



The art of living
WELL



HOTEL AMENITIES

The Amenities at Millenium Atria Business Bay hotel apartments are designed to enhance the way you live, providing all the design-led conveniences the most discerning of guests could wish for.

Experience a wealth of exclusive amenities such as a breathtaking 25th-level infinity pool boasting panoramic views of the Burj Khalifa and Business Bay, 5-star spa, state-of-the-art gymnasium, exquisite dining options, and convenient visitor parking spaces.



PLAZA & RETAIL AREA

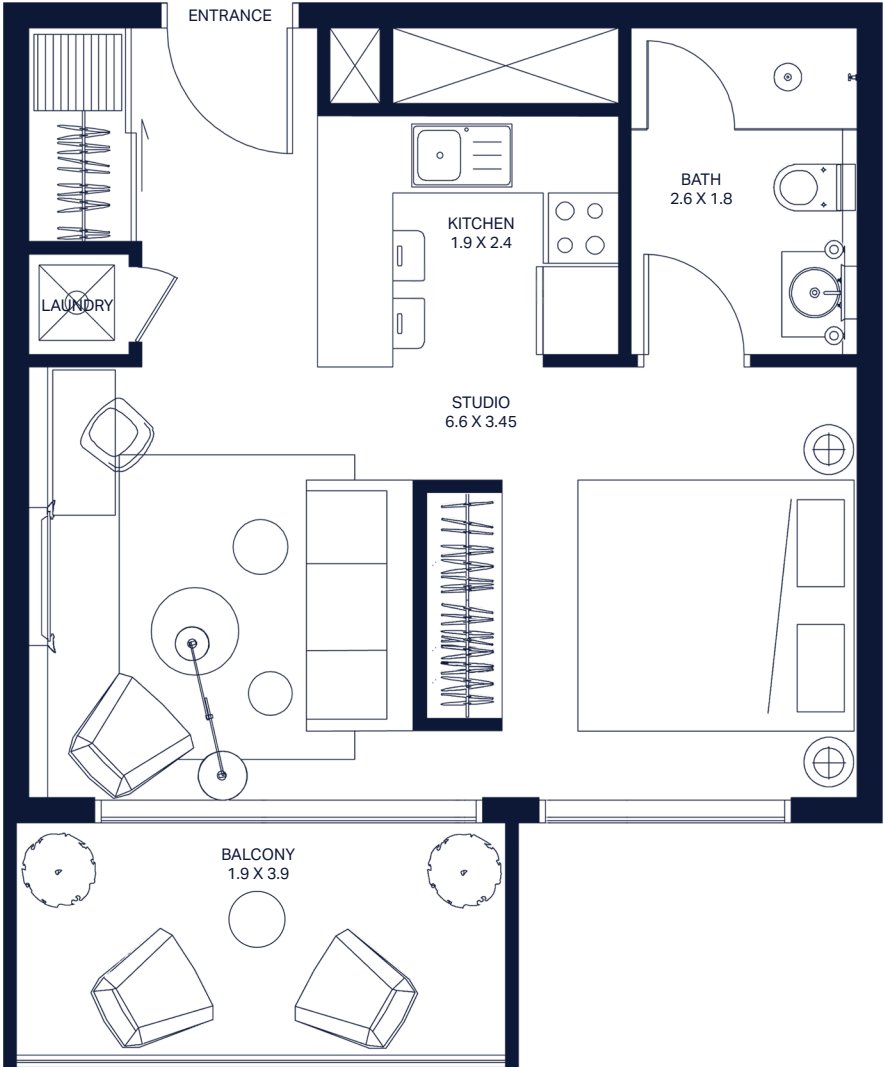
With a park ambience, boutique retail outlets and the choicest variety of restaurants, this central atrium makes for a convenient plaza level. The retail arena is designed keeping in mind the community aspect of this living address. The retail outlets are double-height in structure, allowing access from both the Ground Level and the Mezzanine Level.

So while there are people shopping for the things they need, there is enough room for people to socialize in the community they live in. Apart from the retail arena, there is an appetizing menu of multi-cuisine restaurants that serve delectable dishes for the shoppers and residents.

The development features a dedicated retail area spanning approximately 11,000 sq. ft., comprising nine retail shops and exclusive F&B outlets, including a fine dining restaurant occupying around 3,000 sq. ft., complemented by an equally enchanting landscaped terrace.

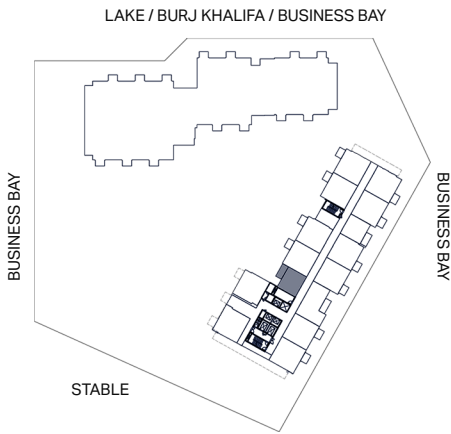


PREMIUM STUDIO - ST1

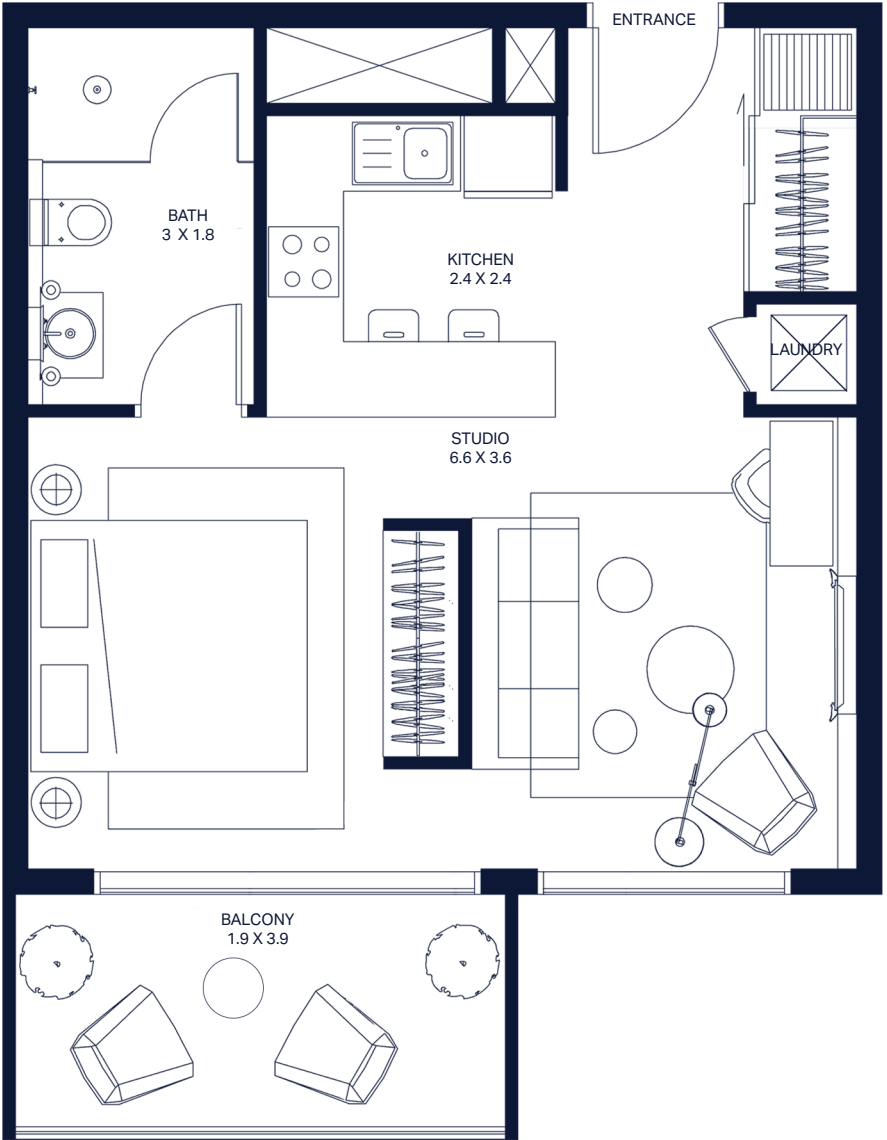


Unit Number: 513-813
Floor: 5-8
Internal Area: 470
Balcony Area: 95

**All the dimensions are in meter | Unit shown is typical, and actual Unit may vary in dimensions, areas, layout, material specification, orientation, and location | Some of the Units may have a mirrored layout of the above plan | Unit Windows, Facade, Balcony door location, Fixtures, Kitchen Cabinets, Sanitary ware, and Wardrobes, including each of their location as shown in the plan is indicative and subject to revision by the Seller | All fixtures, fittings, goods, accessories, and furniture reflected/displayed in this plan(s) are strictly illustrative and representational (not actual) in nature and are only for the purpose of illustrating /reflecting one of the possible layouts which the Purchaser could arrange after the Unit is handed over and do not form part of the Unit. No Furniture, goods, accessories are included in the sale.*

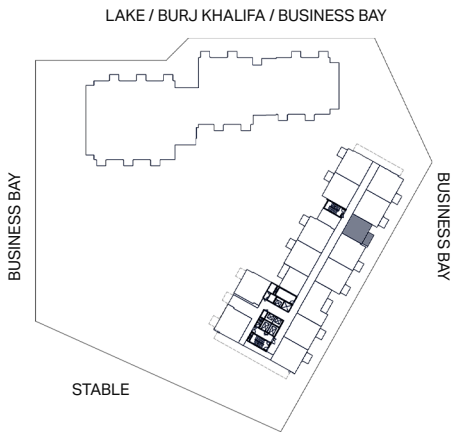


PREMIUM STUDIO - ST2

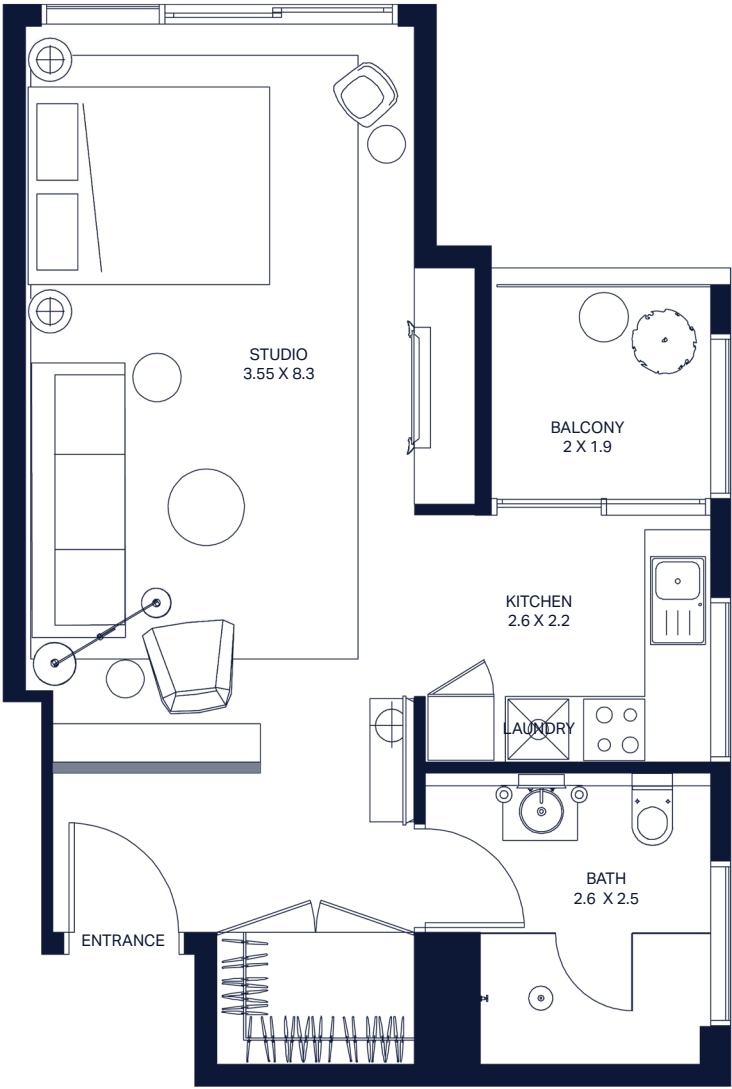


Unit Number: 1806
Floor: 18
Internal Area: 501
Balcony Area: 95

**All the dimensions are in meter | Unit shown is typical, and actual Unit may vary in dimensions, areas, layout, material specification, orientation, and location | Some of the Units may have a mirrored layout of the above plan | Unit Windows, Facade, Balcony door location, Fixtures, Kitchen Cabinets, Sanitary ware, and Wardrobes, including each of their location as shown in the plan is indicative and subject to revision by the Seller | All fixtures, fittings, goods, accessories, and furniture reflected/displayed in this plan(s) are strictly illustrative and representational (not actual) in nature and are only for the purpose of illustrating /reflecting one of the possible layouts which the Purchaser could arrange after the Unit is handed over and do not form part of the Unit. No Furniture, goods, accessories are included in the sale.*

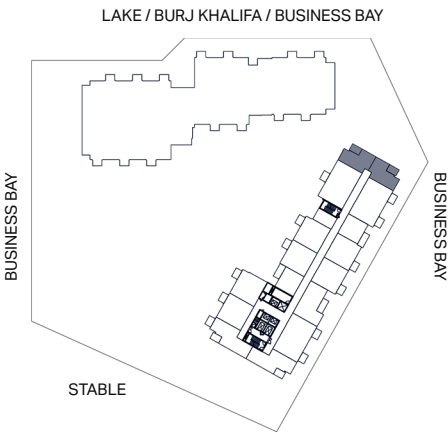


EXECUTIVE STUDIO - ST3

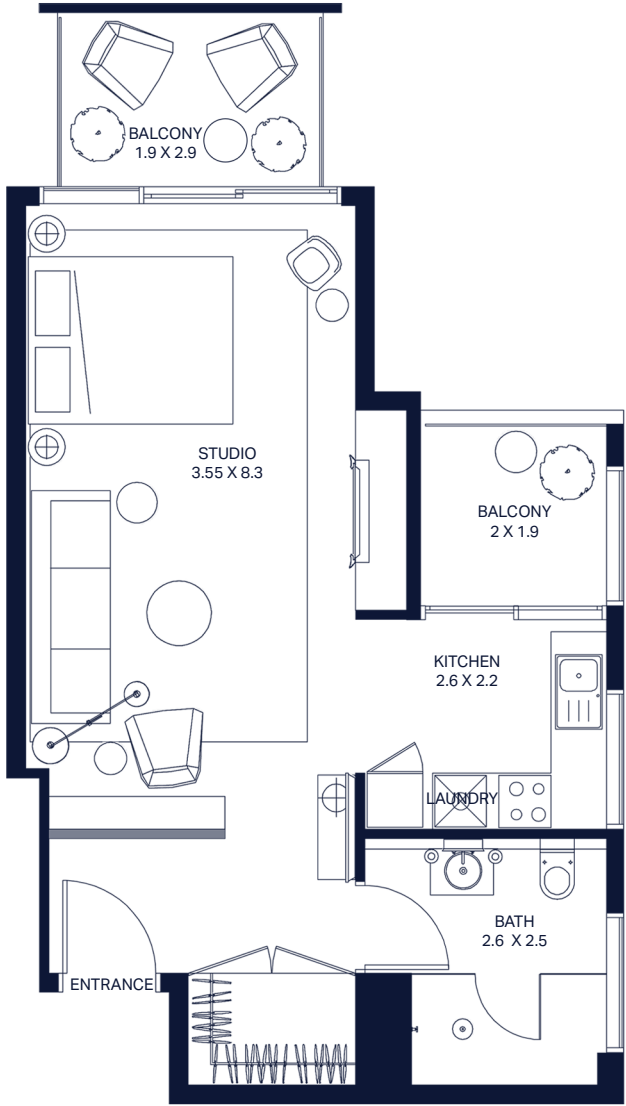


Unit Number: 509-608-709
Floor: 5-6-7
Internal Area: 530
Balcony Area: 79

**All the dimensions are in meter | Unit shown is typical, and actual Unit may vary in dimensions, areas, layout, material specification, orientation, and location | Some of the Units may have a mirrored layout of the above plan | Unit Windows, Facade, Balcony door location, Fixtures, Kitchen Cabinets, Sanitary ware, and Wardrobes, including each of their location as shown in the plan is indicative and subject to revision by the Seller | All fixtures, fittings, goods, accessories, and furniture reflected/displayed in this plan(s) are strictly illustrative and representational (not actual) in nature and are only for the purpose of illustrating /reflecting one of the possible layouts which the Purchaser could arrange after the Unit is handed over and do not form part of the Unit. No Furniture, goods, accessories are included in the sale.*

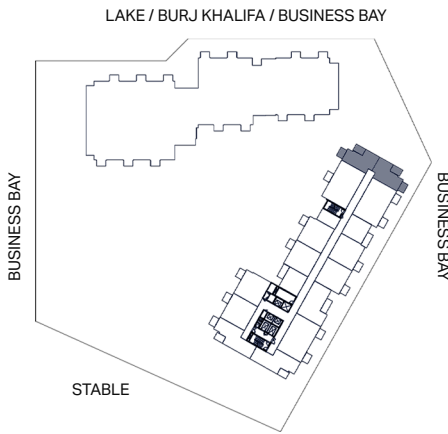


EXECUTIVE STUDIO - ST4

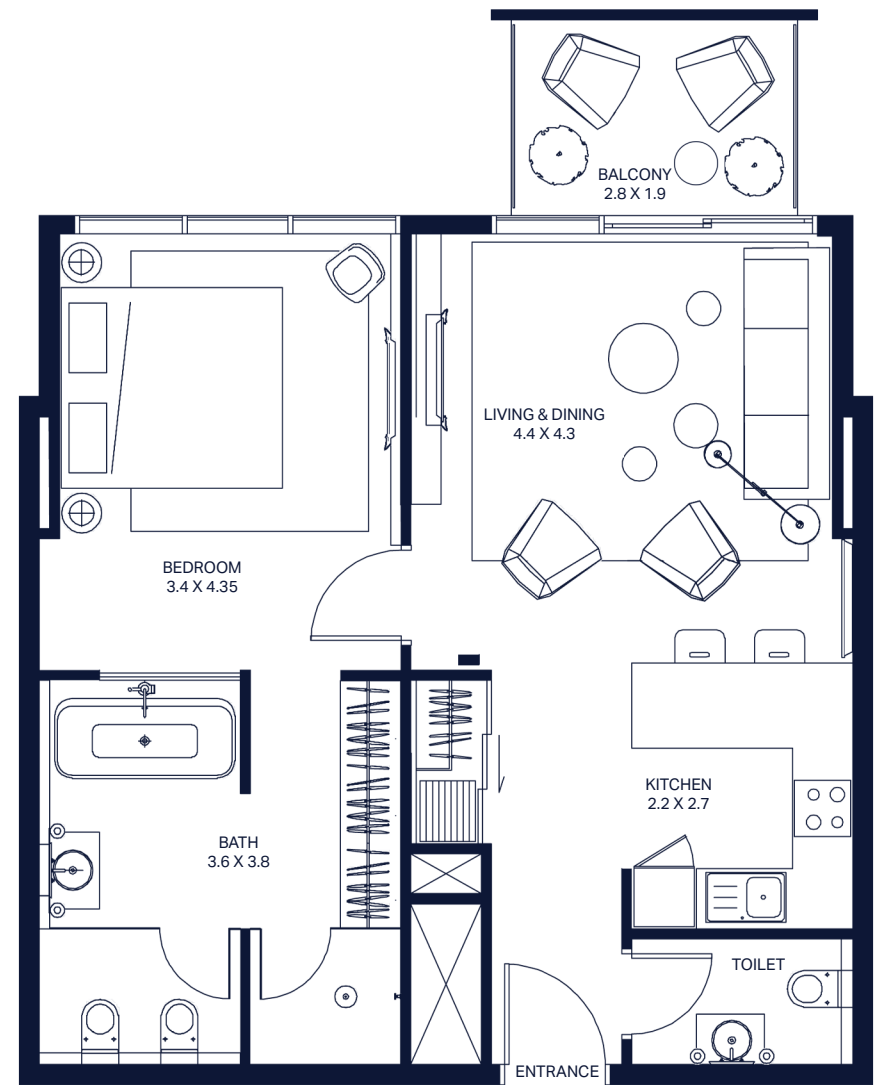


Unit Number: 409-508-809
Floor: 4-5-8
Internal Area: 530
Balcony Area: 139

**All the dimensions are in meter | Unit shown is typical, and actual Unit may vary in dimensions, areas, layout, material specification, orientation, and location | Some of the Units may have a mirrored layout of the above plan | Unit Windows, Facade, Balcony door location, Fixtures, Kitchen Cabinets, Sanitary ware, and Wardrobes, including each of their location as shown in the plan is indicative and subject to revision by the Seller | All fixtures, fittings, goods, accessories, and furniture reflected/displayed in this plan(s) are strictly illustrative and representational (not actual) in nature and are only for the purpose of illustrating /reflecting one of the possible layouts which the Purchaser could arrange after the Unit is handed over and do not form part of the Unit. No Furniture, goods, accessories are included in the sale.*

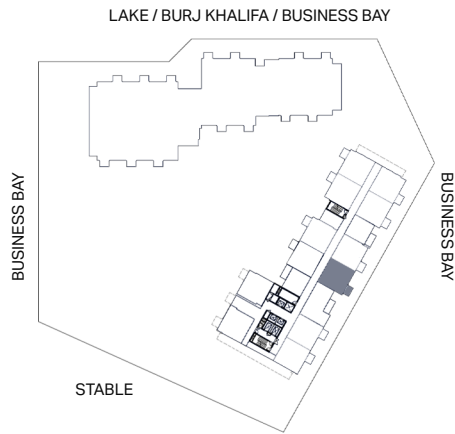


PREMIUM ONE BEDROOM APARTMENT - 1A1

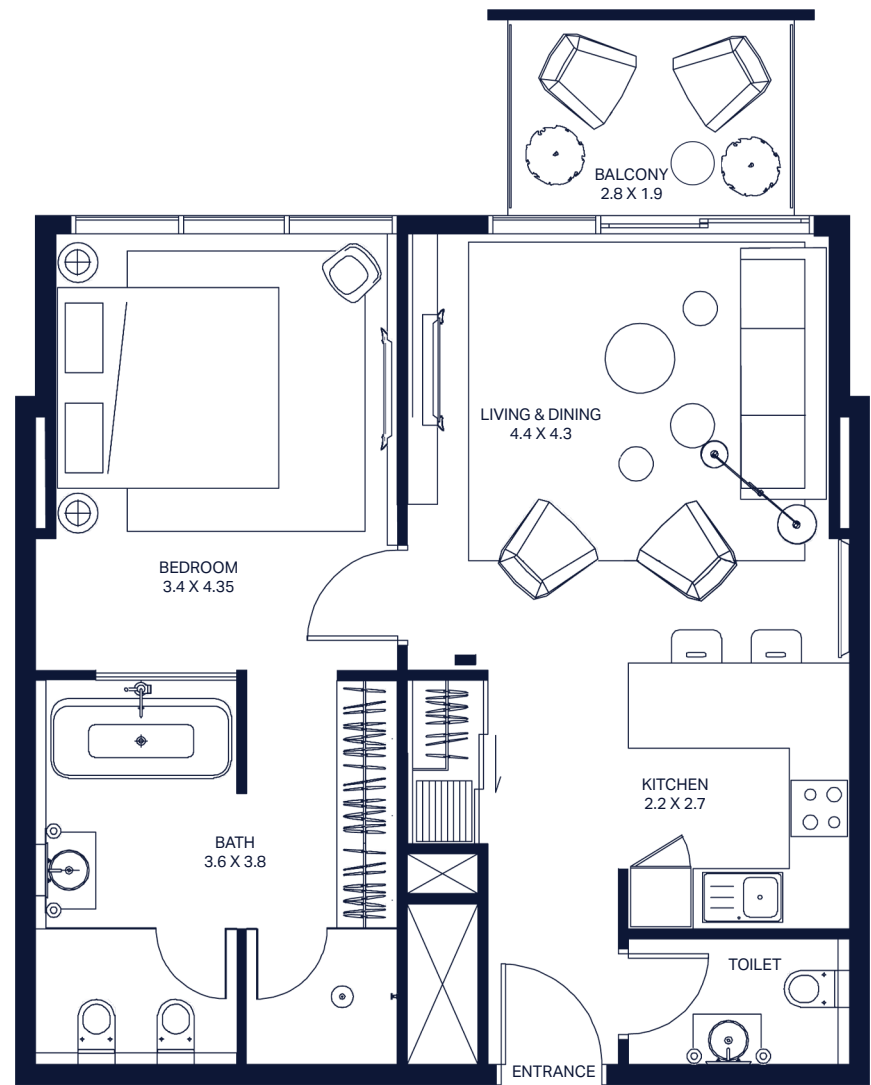


Unit Number: 204-304-604-1904
Floor: 2-3-6-19
Internal Area: 749
Balcony Area: 60

**All the dimensions are in meter | Unit shown is typical, and actual Unit may vary in dimensions, areas, layout, material specification, orientation, and location | Some of the Units may have a mirrored layout of the above plan | Unit Windows, Facade, Balcony door location, Fixtures, Kitchen Cabinets, Sanitary ware, and Wardrobes, including each of their location as shown in the plan is indicative and subject to revision by the Seller | All fixtures, fittings, goods, accessories, and furniture reflected/displayed in this plan(s) are strictly illustrative and representational (not actual) in nature and are only for the purpose of illustrating /reflecting one of the possible layouts which the Purchaser could arrange after the Unit is handed over and do not form part of the Unit. No Furniture, goods, accessories are included in the sale.*

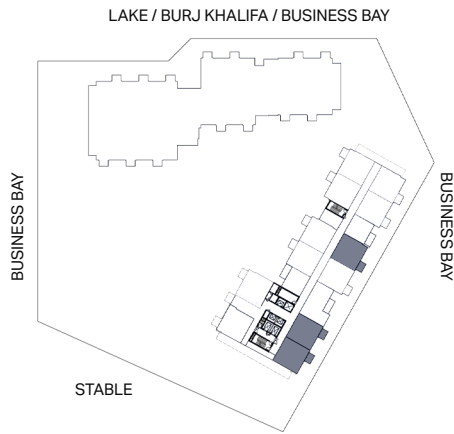


PREMIUM ONE BEDROOM APARTMENT - 1A2

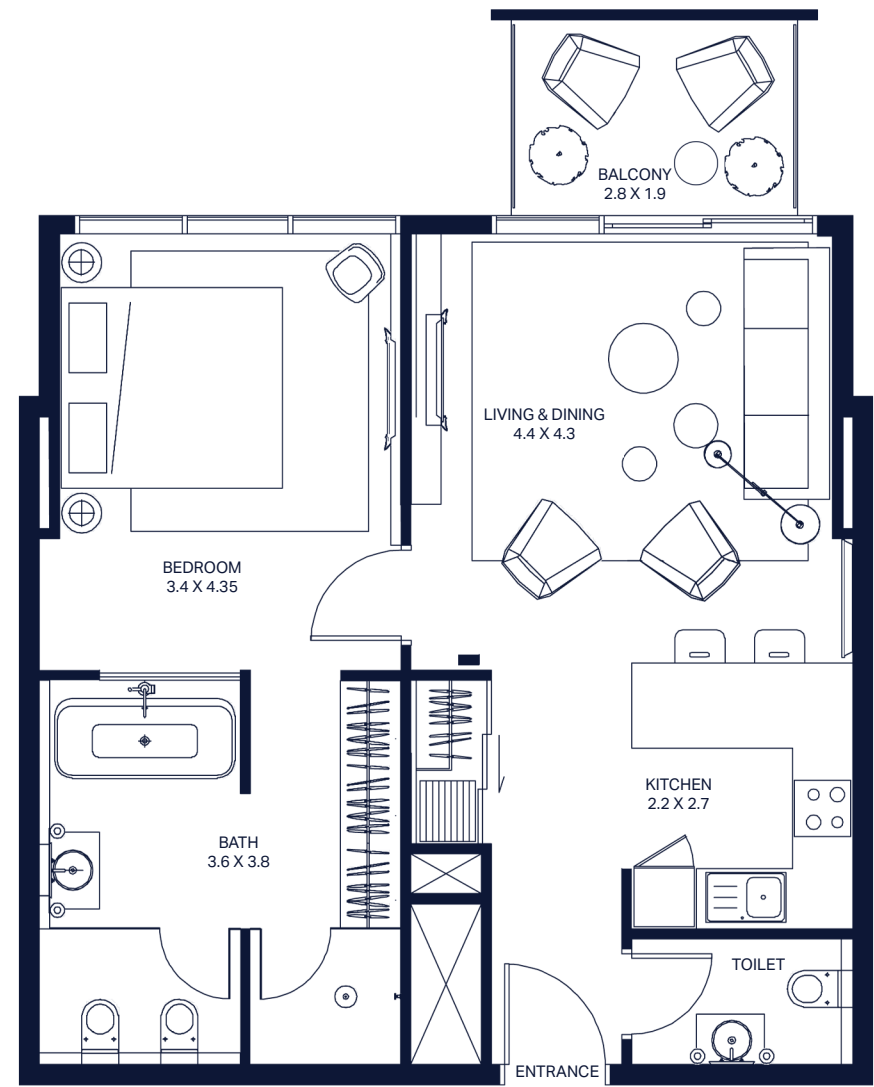


Unit Number: 201-202-205-302-305-405-505-705-1905
Floor: 2-3-4-5-7-19
Internal Area: 764
Balcony Area: 60

**All the dimensions are in meter | Unit shown is typical, and actual Unit may vary in dimensions, areas, layout, material specification, orientation, and location | Some of the Units may have a mirrored layout of the above plan | Unit Windows, Facade, Balcony door location, Fixtures, Kitchen Cabinets, Sanitary ware, and Wardrobes, including each of their location as shown in the plan is indicative and subject to revision by the Seller | All fixtures, fittings, goods, accessories, and furniture reflected/displayed in this plan(s) are strictly illustrative and representational (not actual) in nature and are only for the purpose of illustrating /reflecting one of the possible layouts which the Purchaser could arrange after the Unit is handed over and do not form part of the Unit. No Furniture, goods, accessories are included in the sale.*

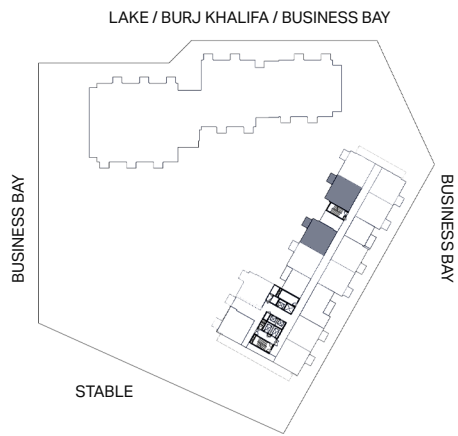


PREMIUM ONE BEDROOM APARTMENT - 1A2

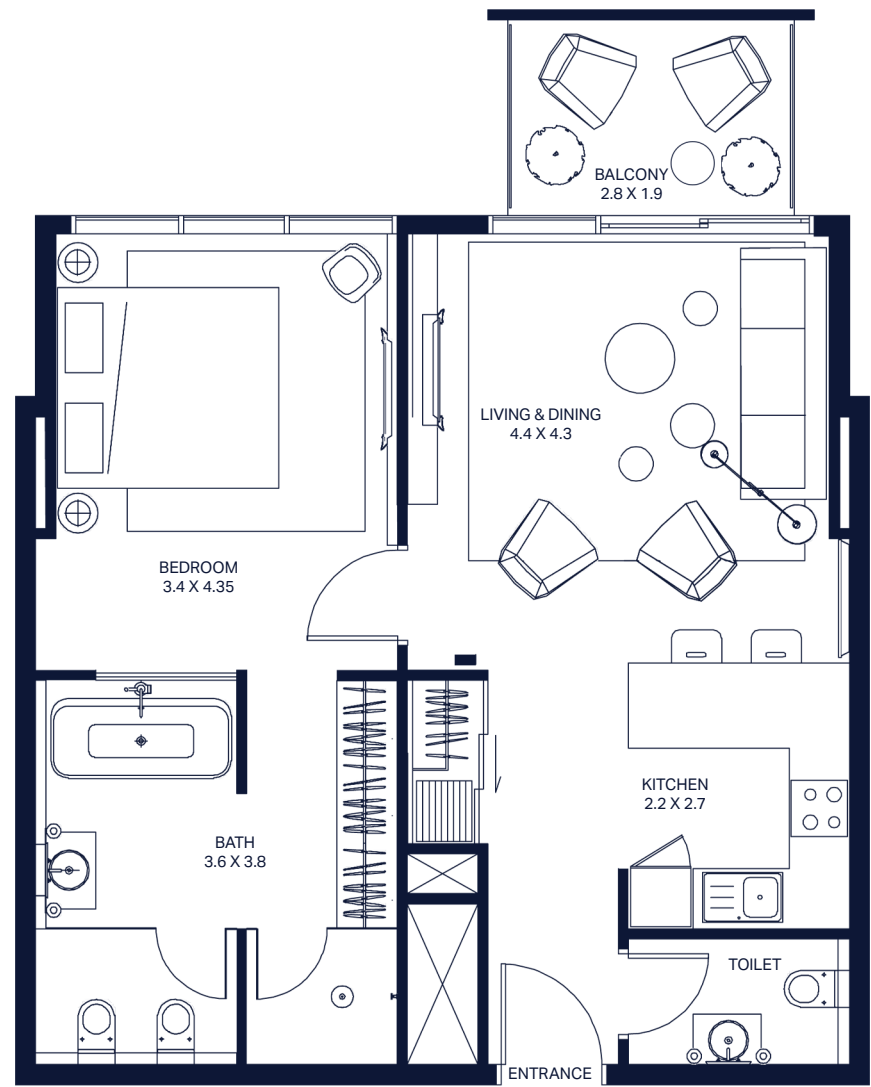


Unit Number: 1710-1807-2006
Floor: 17-18-20
Internal Area: 764
Balcony Area: 60

**All the dimensions are in meter | Unit shown is typical, and actual Unit may vary in dimensions, areas, layout, material specification, orientation, and location | Some of the Units may have a mirrored layout of the above plan | Unit Windows, Facade, Balcony door location, Fixtures, Kitchen Cabinets, Sanitary ware, and Wardrobes, including each of their location as shown in the plan is indicative and subject to revision by the Seller | All fixtures, fittings, goods, accessories, and furniture reflected/displayed in this plan(s) are strictly illustrative and representational (not actual) in nature and are only for the purpose of illustrating /reflecting one of the possible layouts which the Purchaser could arrange after the Unit is handed over and do not form part of the Unit. No Furniture, goods, accessories are included in the sale.*

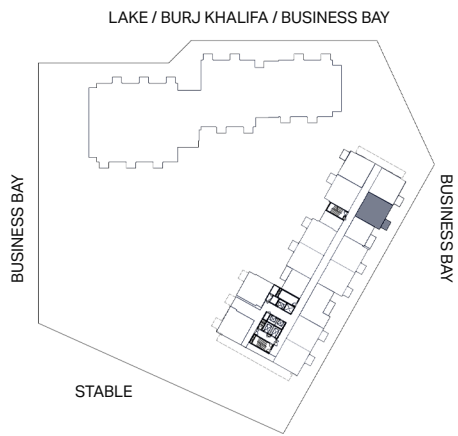


PREMIUM ONE BEDROOM APARTMENT - 1A3

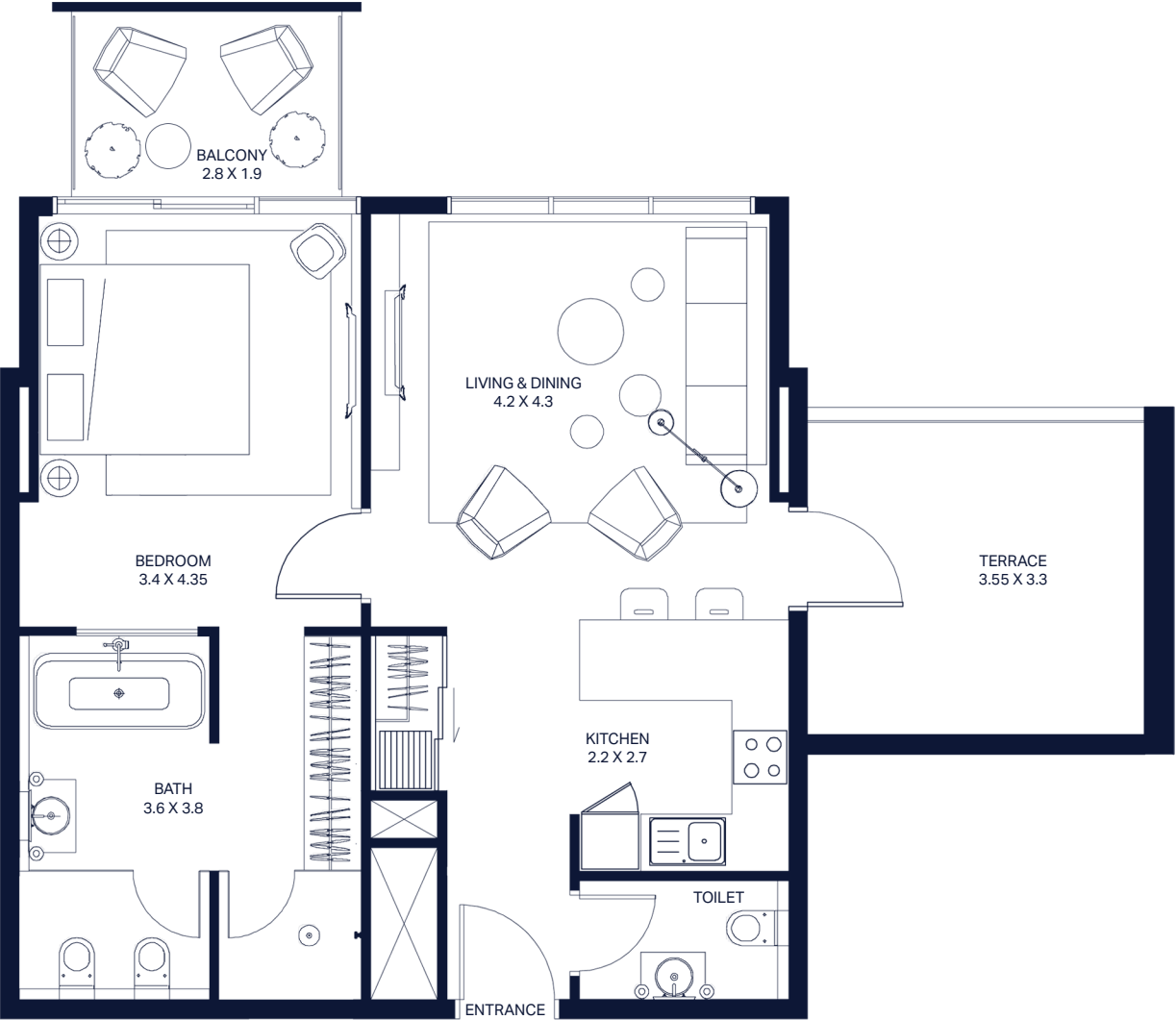


Unit Number: 207-307
Floor: 2-3
Internal Area: 767
Balcony Area: 60

**All the dimensions are in meter | Unit shown is typical, and actual Unit may vary in dimensions, areas, layout, material specification, orientation, and location | Some of the Units may have a mirrored layout of the above plan | Unit Windows, Facade, Balcony door location, Fixtures, Kitchen Cabinets, Sanitary ware, and Wardrobes, including each of their location as shown in the plan is indicative and subject to revision by the Seller | All fixtures, fittings, goods, accessories, and furniture reflected/displayed in this plan(s) are strictly illustrative and representational (not actual) in nature and are only for the purpose of illustrating /reflecting one of the possible layouts which the Purchaser could arrange after the Unit is handed over and do not form part of the Unit. No Furniture, goods, accessories are included in the sale.*

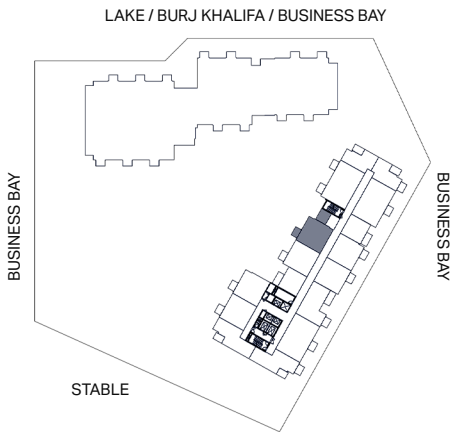


PREMIUM ONE BEDROOM APARTMENT - 1A4

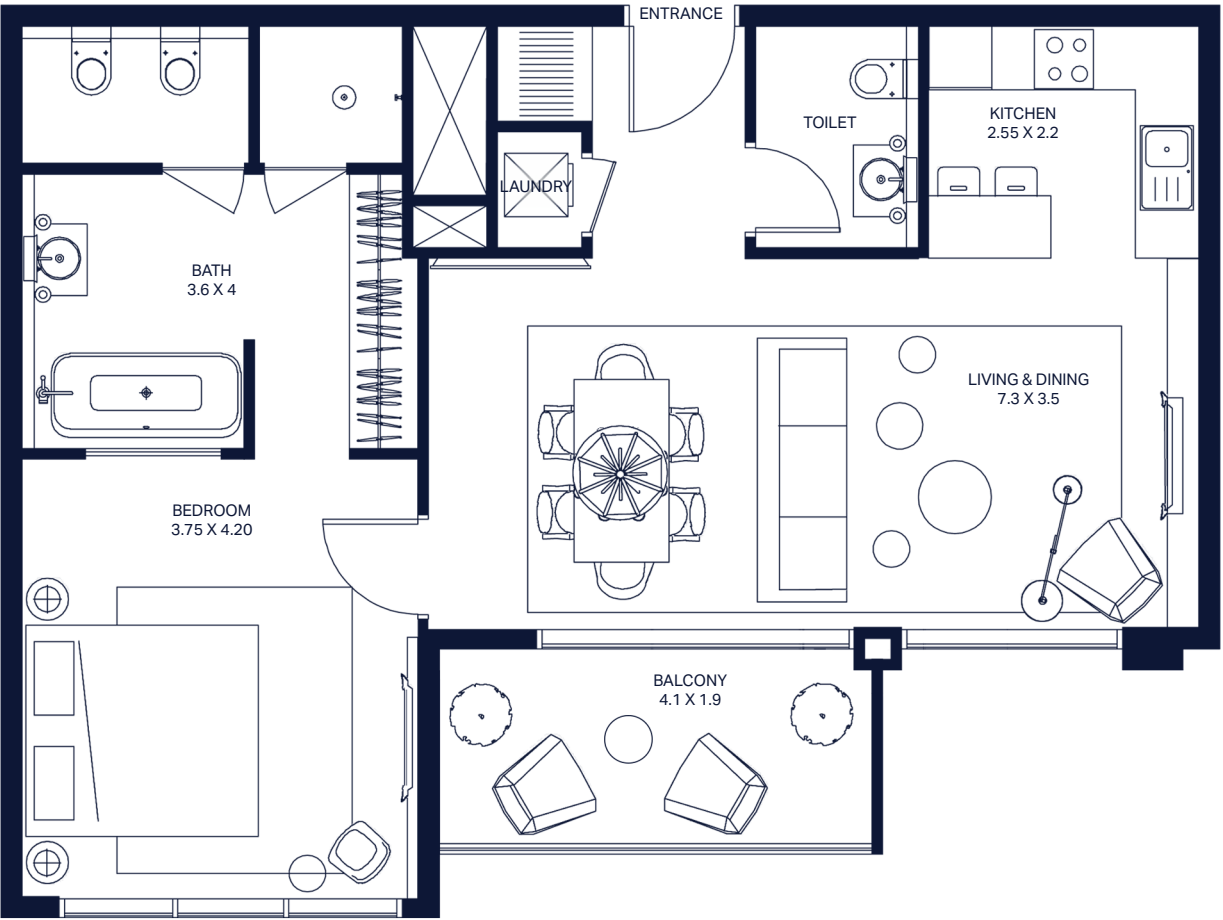


Unit Number: 711
Floor: 7
Internal Area: 760
Balcony Area: 205

**All the dimensions are in meter | Unit shown is typical, and actual Unit may vary in dimensions, areas, layout, material specification, orientation, and location | Some of the Units may have a mirrored layout of the above plan | Unit Windows, Facade, Balcony door location, Fixtures, Kitchen Cabinets, Sanitary ware, and Wardrobes, including each of their location as shown in the plan is indicative and subject to revision by the Seller | All fixtures, fittings, goods, accessories, and furniture reflected/displayed in this plan(s) are strictly illustrative and representational (not actual) in nature and are only for the purpose of illustrating /reflecting one of the possible layouts which the Purchaser could arrange after the Unit is handed over and do not form part of the Unit. No Furniture, goods, accessories are included in the sale.*

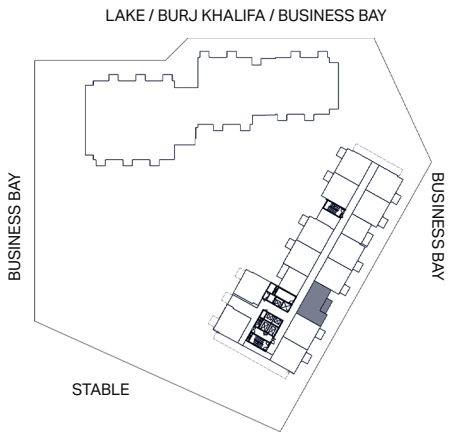


PREMIUM ONE BEDROOM APARTMENT - 1B1



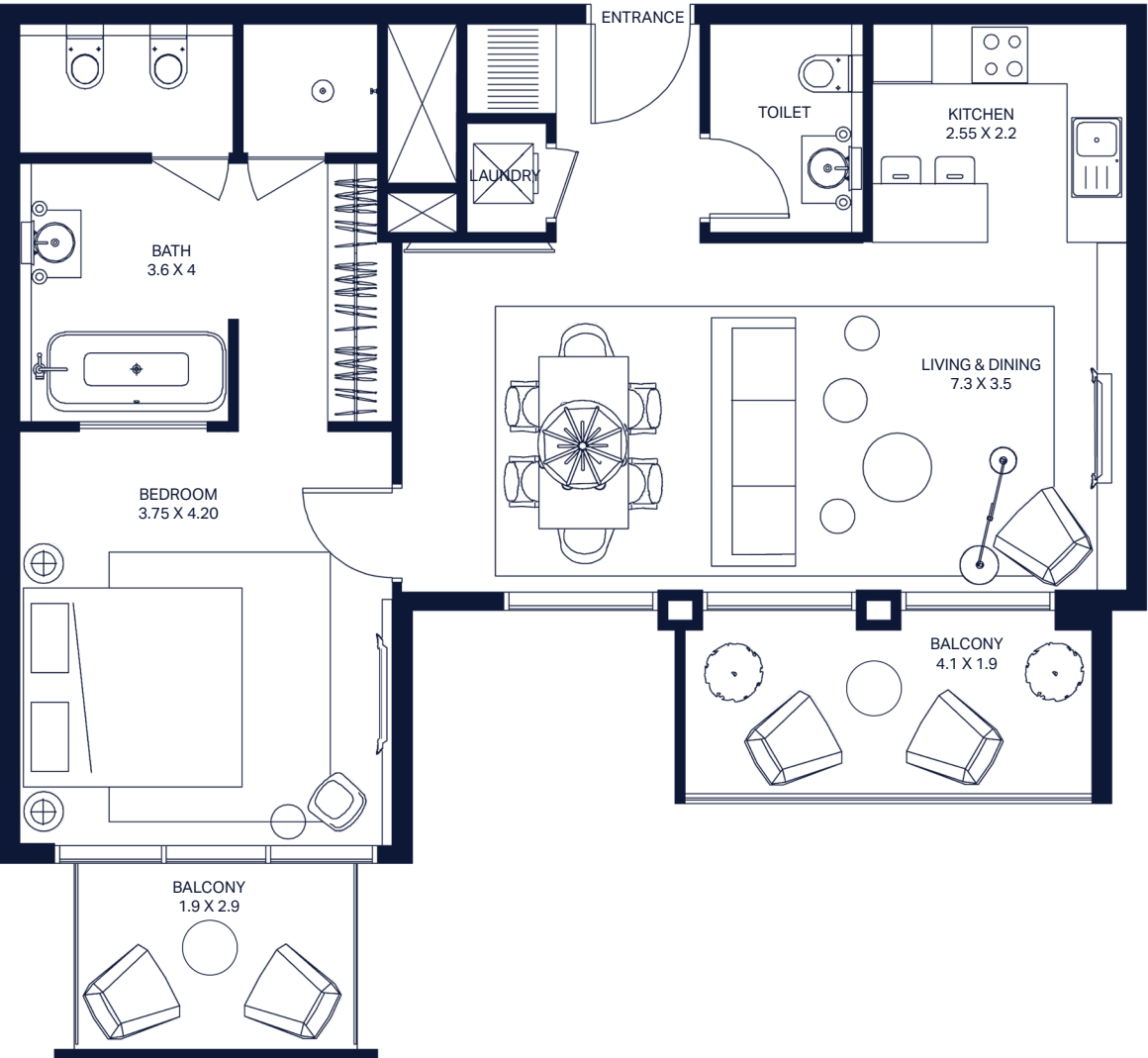
Unit Number: 203-403-603-803-1803-2003
Floor: 2-4-6-8-18-20
Internal Area: 828
Balcony Area: 95

**All the dimensions are in meter | Unit shown is typical, and actual Unit may vary in dimensions, areas, layout, material specification, orientation, and location | Some of the Units may have a mirrored layout of the above plan | Unit Windows, Facade, Balcony door location, Fixtures, Kitchen Cabinets, Sanitary ware, and Wardrobes, including each of their location as shown in the plan is indicative and subject to revision by the Seller | All fixtures, fittings, goods, accessories, and furniture reflected/displayed in this plan(s) are strictly illustrative and representational (not actual) in nature and are only for the purpose of illustrating /reflecting one of the possible layouts which the Purchaser could arrange after the Unit is handed over and do not form part of the Unit. No Furniture, goods, accessories are included in the sale.*



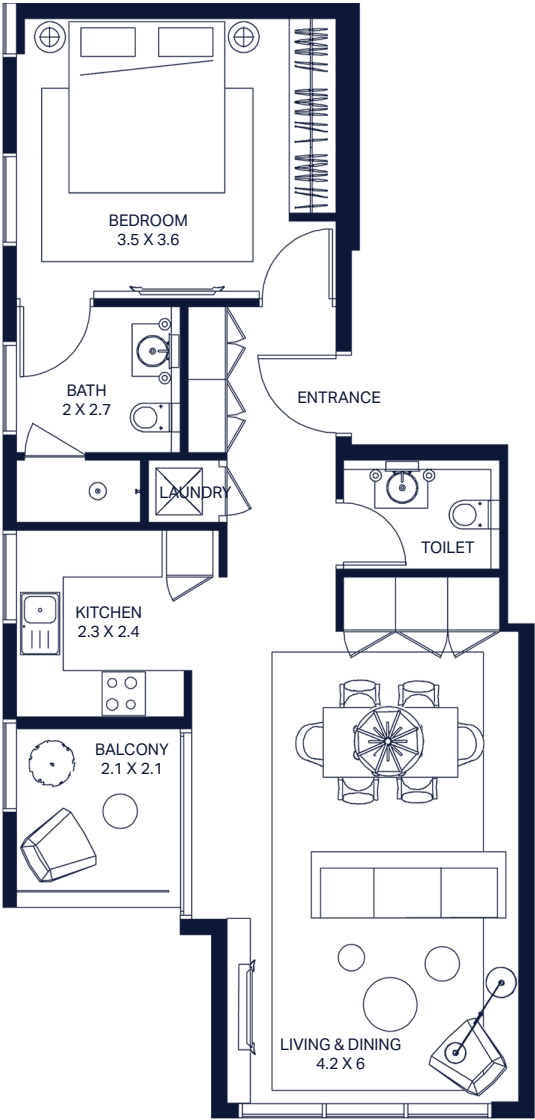
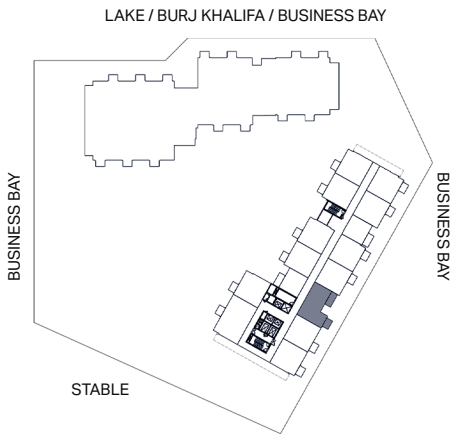
PREMIUM ONE BEDROOM APARTMENT - 1B2

PREMIUM ONE BEDROOM APARTMENT - 1C1



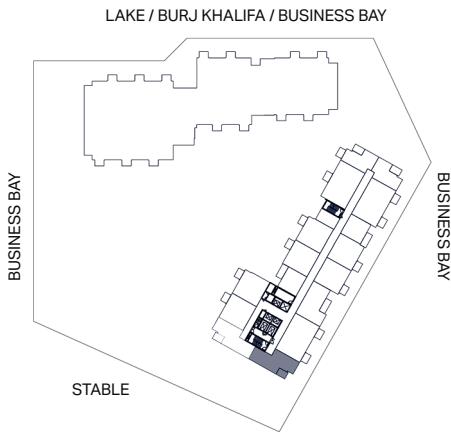
Unit Number: 303-503-703-1703-1903
Floor: 3-5-7-17-19
Internal Area: 828
Balcony Area: 156

**All the dimensions are in meter | Unit shown is typical, and actual Unit may vary in dimensions, areas, layout, material specification, orientation, and location | Some of the Units may have a mirrored layout of the above plan | Unit Windows, Facade, Balcony door location, Fixtures, Kitchen Cabinets, Sanitary ware, and Wardrobes, including each of their location as shown in the plan is indicative and subject to revision by the Seller | All fixtures, fittings, goods, accessories, and furniture reflected/displayed in this plan(s) are strictly illustrative and representational (not actual) in nature and are only for the purpose of illustrating /reflecting one of the possible layouts which the Purchaser could arrange after the Unit is handed over and do not form part of the Unit. No Furniture, goods, accessories are included in the sale.*

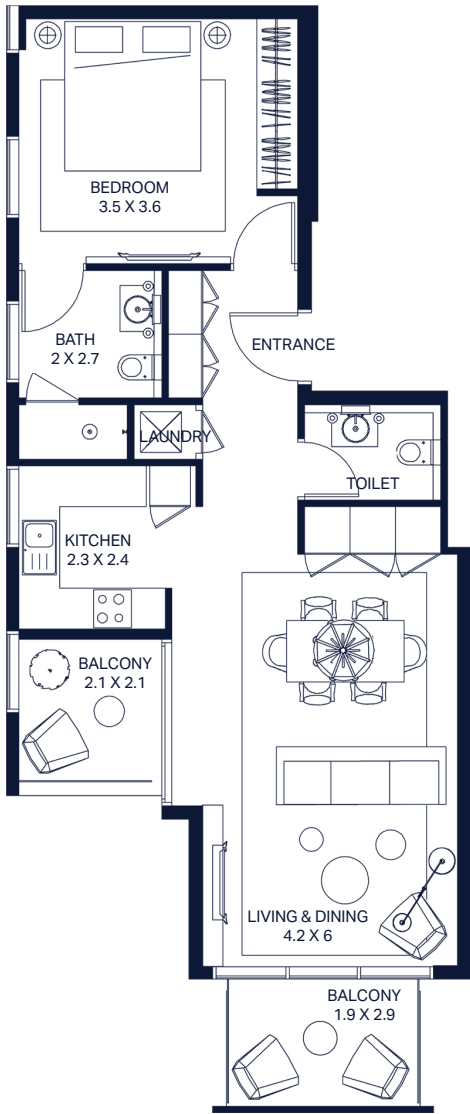


Unit Number: 2401
Floor: 24
Internal Area: 754
Balcony Area: 72

**All the dimensions are in meter | Unit shown is typical, and actual Unit may vary in dimensions, areas, layout, material specification, orientation, and location | Some of the Units may have a mirrored layout of the above plan | Unit Windows, Facade, Balcony door location, Fixtures, Kitchen Cabinets, Sanitary ware, and Wardrobes, including each of their location as shown in the plan is indicative and subject to revision by the Seller | All fixtures, fittings, goods, accessories, and furniture reflected/displayed in this plan(s) are strictly illustrative and representational (not actual) in nature and are only for the purpose of illustrating /reflecting one of the possible layouts which the Purchaser could arrange after the Unit is handed over and do not form part of the Unit. No Furniture, goods, accessories are included in the sale.*

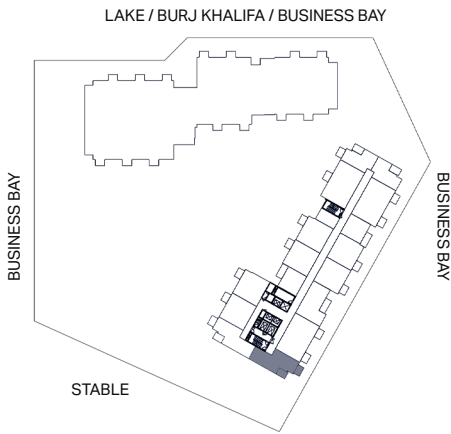


PREMIUM ONE BEDROOM APARTMENT - 1C2

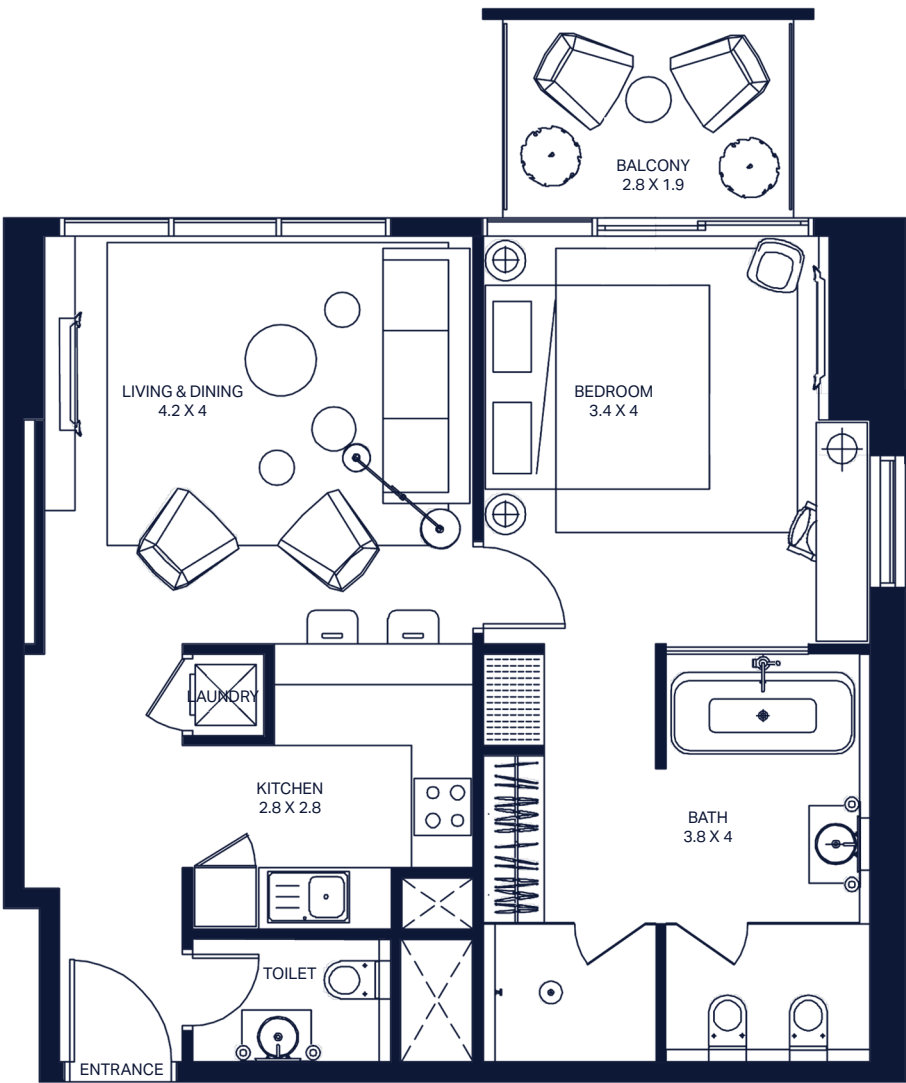


Unit Number: 501-701-1701-1901
Floor: 5-7-17-19
Internal Area: 754
Balcony Area: 133

**All the dimensions are in meter | Unit shown is typical, and actual Unit may vary in dimensions, areas, layout, material specification, orientation, and location | Some of the Units may have a mirrored layout of the above plan | Unit Windows, Facade, Balcony door location, Fixtures, Kitchen Cabinets, Sanitary ware, and Wardrobes, including each of their location as shown in the plan is indicative and subject to revision by the Seller | All fixtures, fittings, goods, accessories, and furniture reflected/displayed in this plan(s) are strictly illustrative and representational (not actual) in nature and are only for the purpose of illustrating /reflecting one of the possible layouts which the Purchaser could arrange after the Unit is handed over and do not form part of the Unit. No Furniture, goods, accessories are included in the sale.*

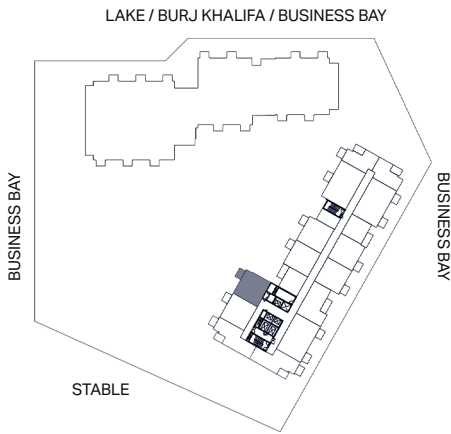


PREMIUM ONE BEDROOM APARTMENT - 1H1

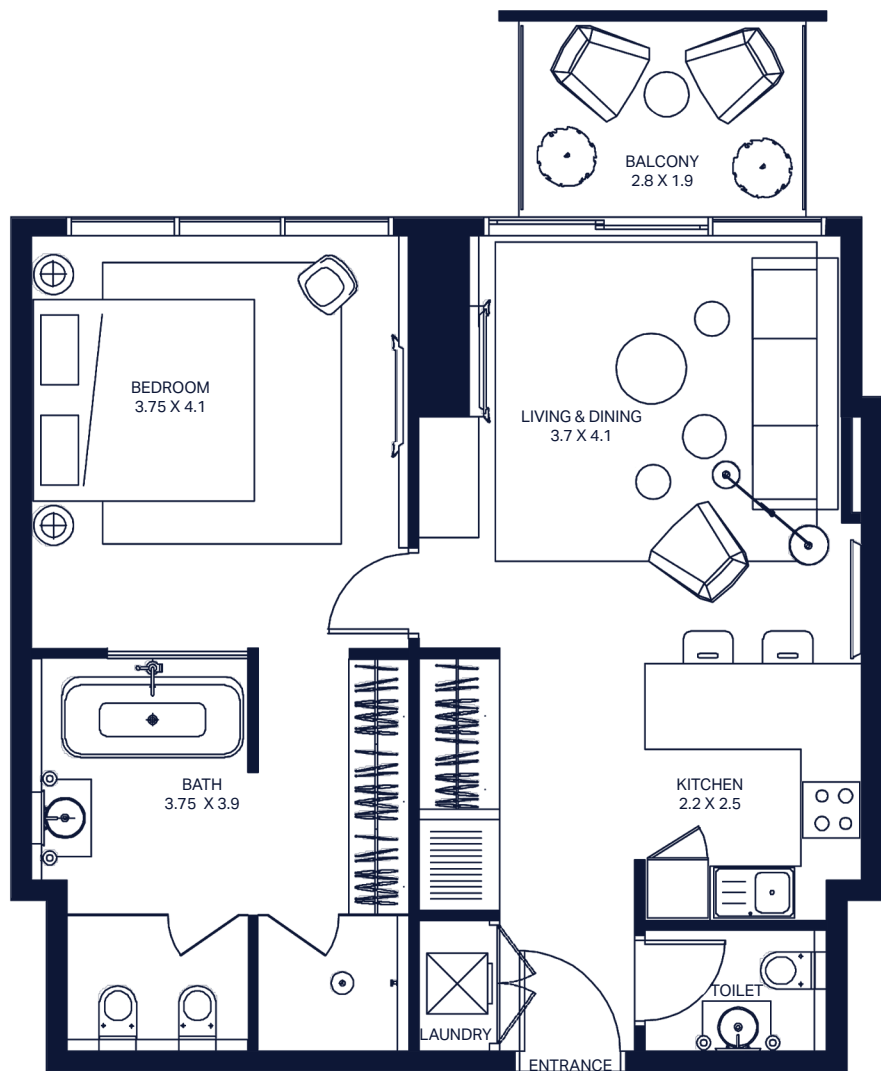


Unit Number: 314-414-514-614-714-2404
Floor: 3-4-5-6-7-24
Internal Area: 735
Balcony Area: 60

**All the dimensions are in meter | Unit shown is typical, and actual Unit may vary in dimensions, areas, layout, material specification, orientation, and location | Some of the Units may have a mirrored layout of the above plan | Unit Windows, Facade, Balcony door location, Fixtures, Kitchen Cabinets, Sanitary ware, and Wardrobes, including each of their location as shown in the plan is indicative and subject to revision by the Seller | All fixtures, fittings, goods, accessories, and furniture reflected/displayed in this plan(s) are strictly illustrative and representational (not actual) in nature and are only for the purpose of illustrating /reflecting one of the possible layouts which the Purchaser could arrange after the Unit is handed over and do not form part of the Unit. No Furniture, goods, accessories are included in the sale.*

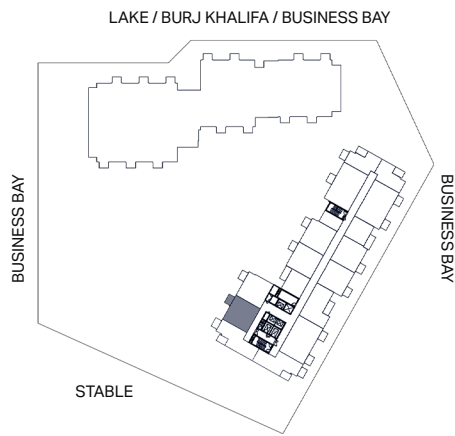


PREMIUM ONE BEDROOM APARTMENT - 1H2

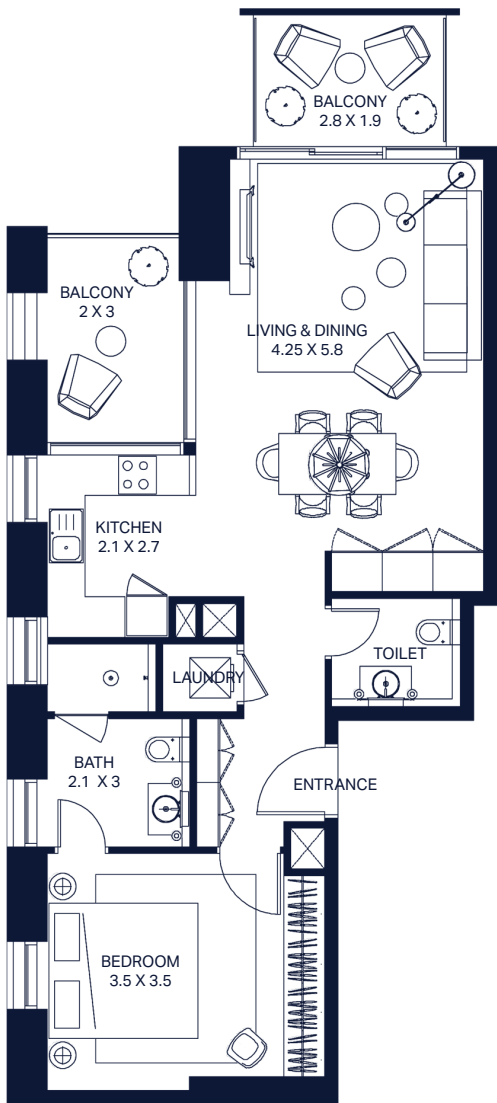


Unit Number: 415-515-615-715-815-1910-2405
Floor: 4-5-6-7-8-19-24
Internal Area: 744
Balcony Area: 60

**All the dimensions are in meter | Unit shown is typical, and actual Unit may vary in dimensions, areas, layout, material specification, orientation, and location | Some of the Units may have a mirrored layout of the above plan | Unit Windows, Facade, Balcony door location, Fixtures, Kitchen Cabinets, Sanitary ware, and Wardrobes, including each of their location as shown in the plan is indicative and subject to revision by the Seller | All fixtures, fittings, goods, accessories, and furniture reflected/displayed in this plan(s) are strictly illustrative and representational (not actual) in nature and are only for the purpose of illustrating /reflecting one of the possible layouts which the Purchaser could arrange after the Unit is handed over and do not form part of the Unit. No Furniture, goods, accessories are included in the sale.*

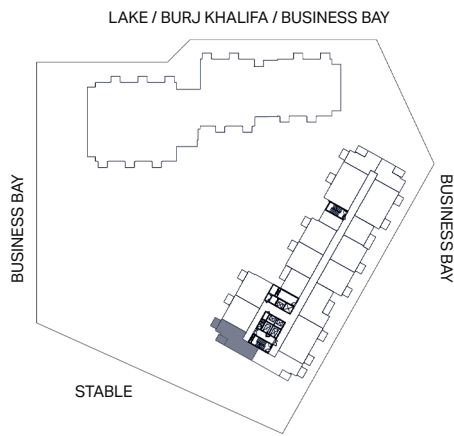


PREMIUM ONE BEDROOM APARTMENT - 1H3

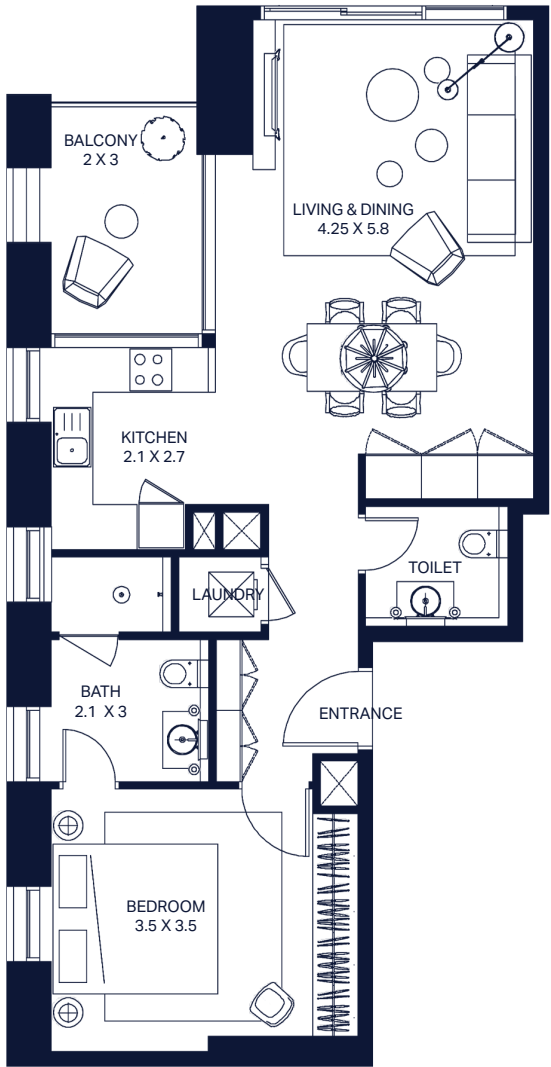


Unit Number: 416-616-816-2406
Floor: 4-6-8-24
Internal Area: 759
Balcony Area: 133

**All the dimensions are in meter | Unit shown is typical, and actual Unit may vary in dimensions, areas, layout, material specification, orientation, and location | Some of the Units may have a mirrored layout of the above plan | Unit Windows, Facade, Balcony door location, Fixtures, Kitchen Cabinets, Sanitary ware, and Wardrobes, including each of their location as shown in the plan is indicative and subject to revision by the Seller | All fixtures, fittings, goods, accessories, and furniture reflected/displayed in this plan(s) are strictly illustrative and representational (not actual) in nature and are only for the purpose of illustrating /reflecting one of the possible layouts which the Purchaser could arrange after the Unit is handed over and do not form part of the Unit. No Furniture, goods, accessories are included in the sale.*

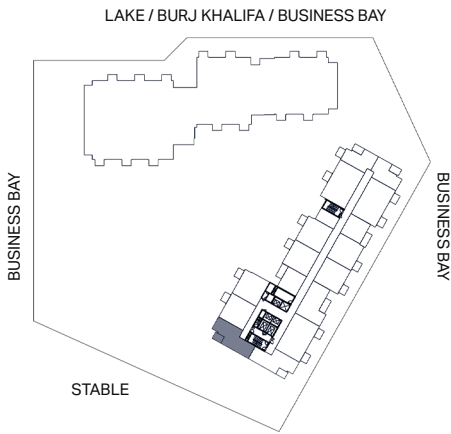


PREMIUM ONE BEDROOM APARTMENT - 1H4

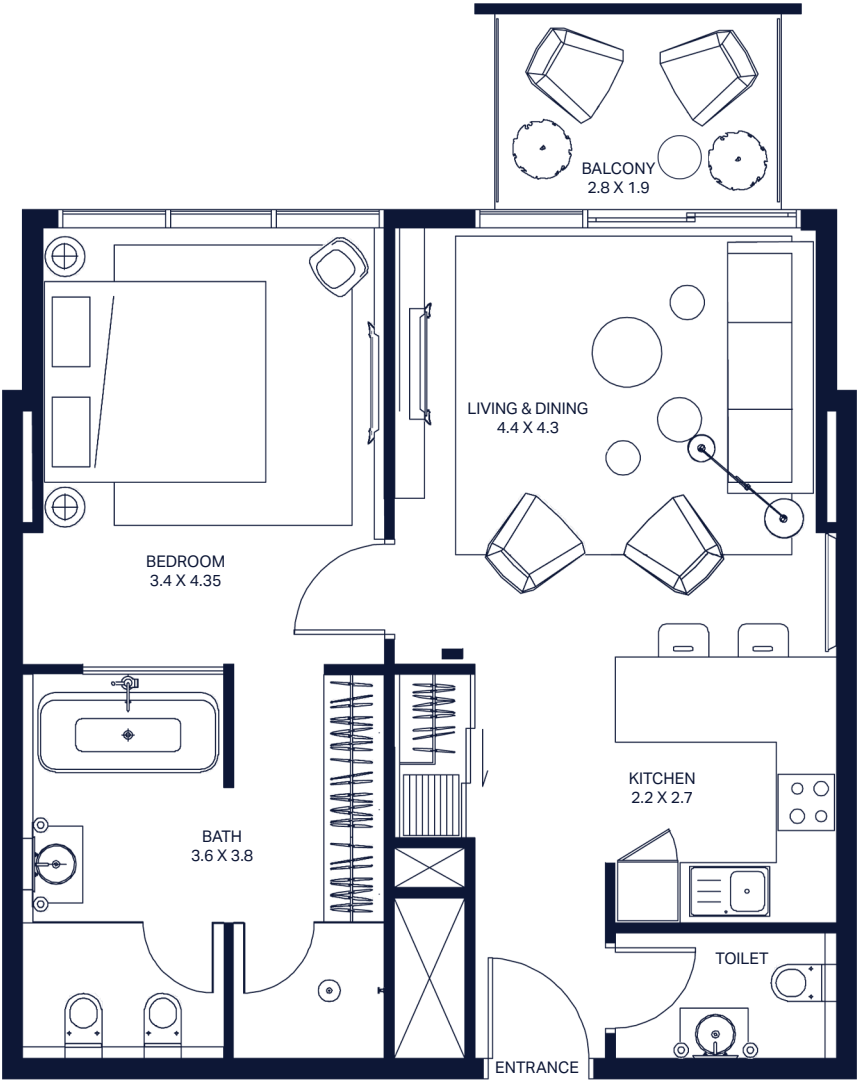


Unit Number: 516-716-1716-1911
Floor: 5-7-17-19
Internal Area: 759
Balcony Area: 73

**All the dimensions are in meter | Unit shown is typical, and actual Unit may vary in dimensions, areas, layout, material specification, orientation, and location | Some of the Units may have a mirrored layout of the above plan | Unit Windows, Facade, Balcony door location, Fixtures, Kitchen Cabinets, Sanitary ware, and Wardrobes, including each of their location as shown in the plan is indicative and subject to revision by the Seller | All fixtures, fittings, goods, accessories, and furniture reflected/displayed in this plan(s) are strictly illustrative and representational (not actual) in nature and are only for the purpose of illustrating /reflecting one of the possible layouts which the Purchaser could arrange after the Unit is handed over and do not form part of the Unit. No Furniture, goods, accessories are included in the sale.*

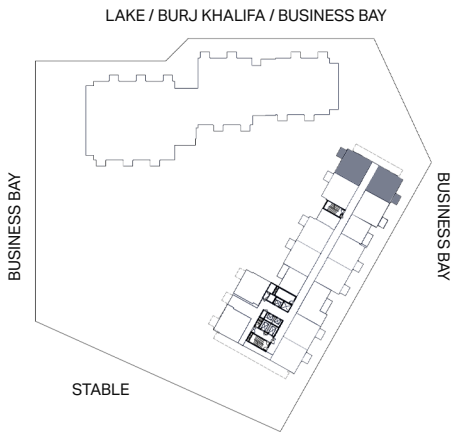


EXECUTIVE ONE BEDROOM APARTMENT - 1A3

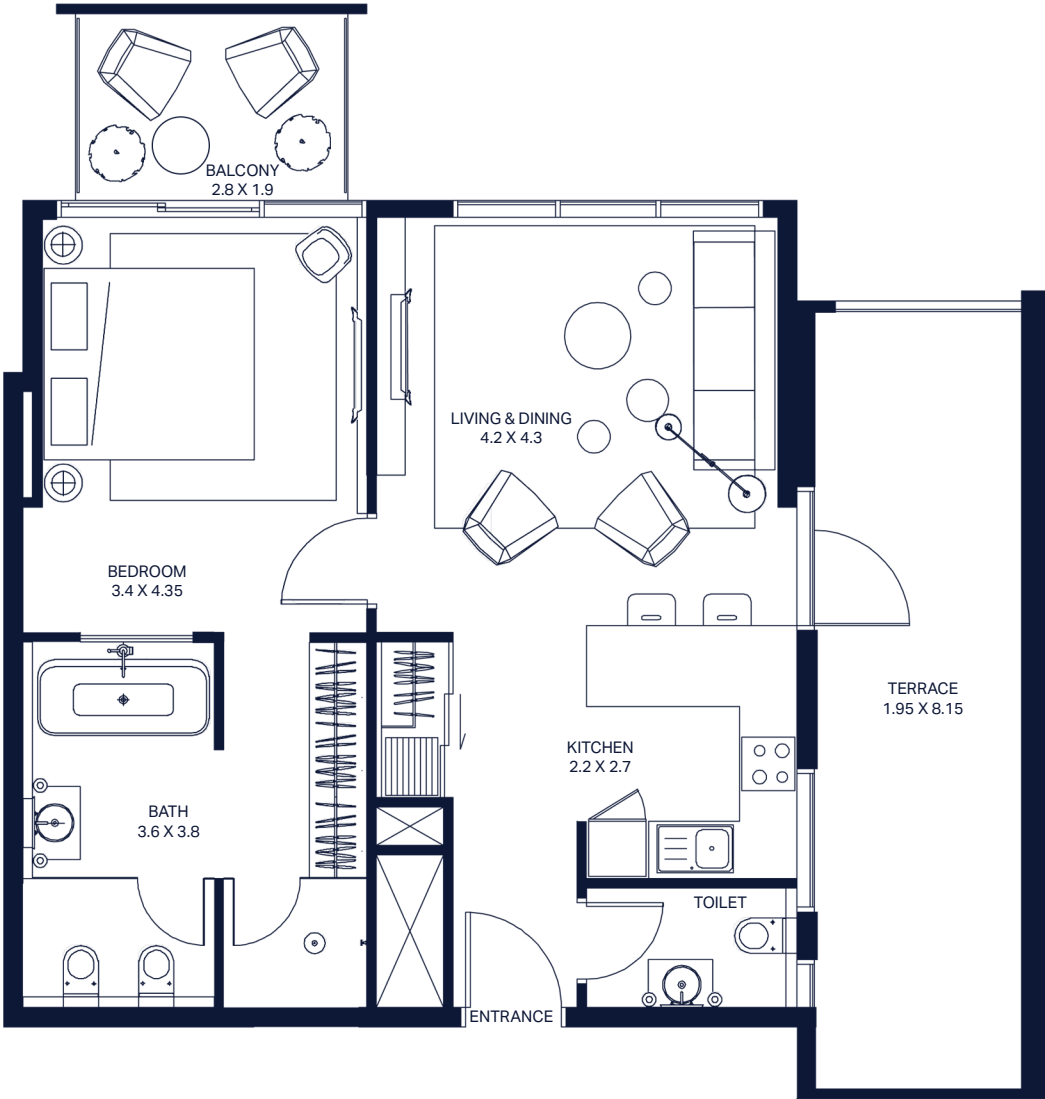


Unit Number: 208-209-308-309
Floor: 2-3
Internal Area: 766
Balcony Area: 60

**All the dimensions are in meter | Unit shown is typical, and actual Unit may vary in dimensions, areas, layout, material specification, orientation, and location | Some of the Units may have a mirrored layout of the above plan | Unit Windows, Facade, Balcony door location, Fixtures, Kitchen Cabinets, Sanitary ware, and Wardrobes, including each of their location as shown in the plan is indicative and subject to revision by the Seller | All fixtures, fittings, goods, accessories, and furniture reflected/displayed in this plan(s) are strictly illustrative and representational (not actual) in nature and are only for the purpose of illustrating /reflecting one of the possible layouts which the Purchaser could arrange after the Unit is handed over and do not form part of the Unit. No Furniture, goods, accessories are included in the sale.*

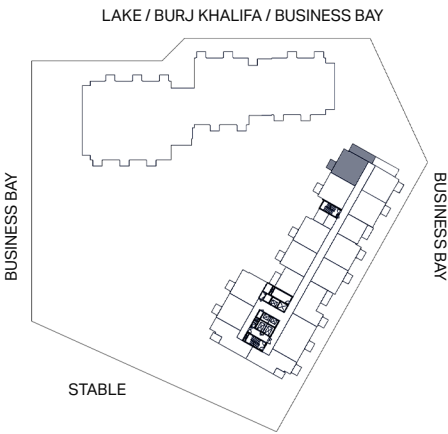


EXECUTIVE ONE BEDROOM APARTMENT - 1A5

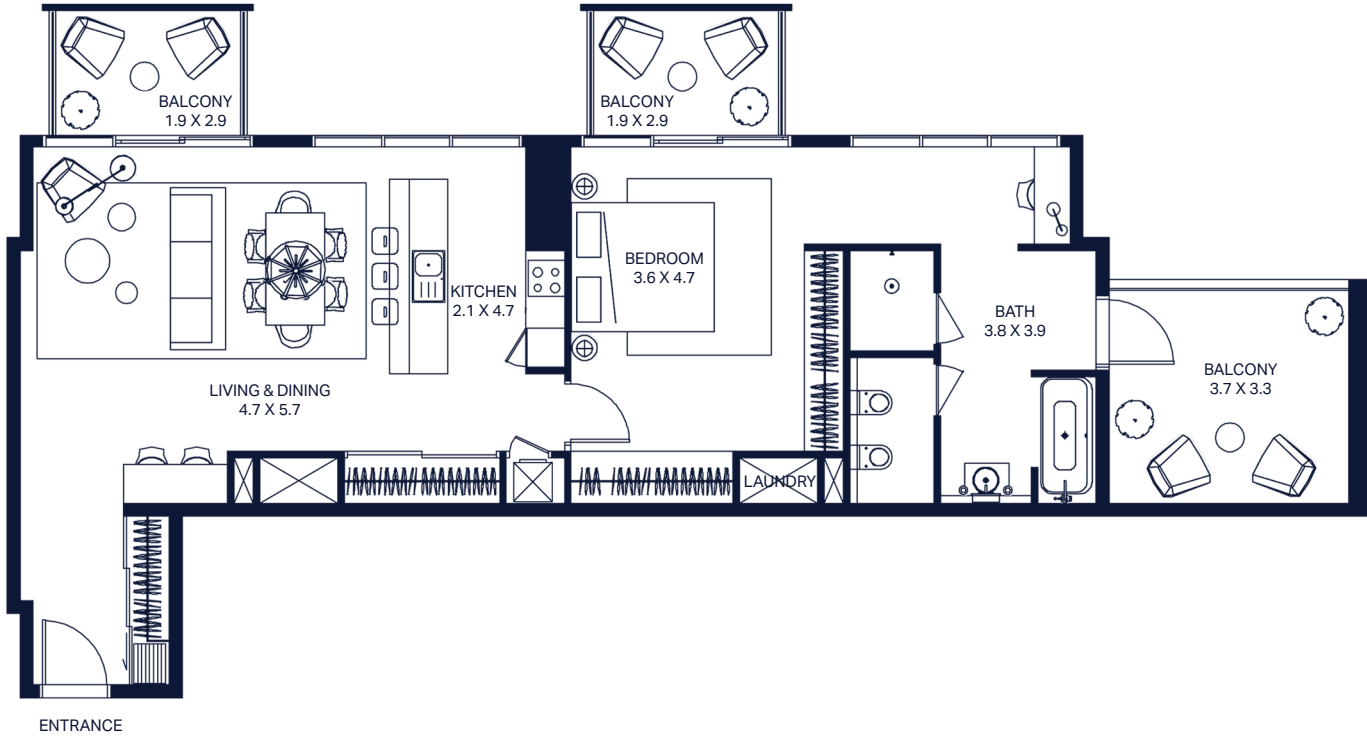


Unit Number: 1709
Floor: 17
Internal Area: 764
Balcony Area: 278

**All the dimensions are in meter | Unit shown is typical, and actual Unit may vary in dimensions, areas, layout, material specification, orientation, and location | Some of the Units may have a mirrored layout of the above plan | Unit Windows, Facade, Balcony door location, Fixtures, Kitchen Cabinets, Sanitary ware, and Wardrobes, including each of their location as shown in the plan is indicative and subject to revision by the Seller | All fixtures, fittings, goods, accessories, and furniture reflected/displayed in this plan(s) are strictly illustrative and representational (not actual) in nature and are only for the purpose of illustrating /reflecting one of the possible layouts which the Purchaser could arrange after the Unit is handed over and do not form part of the Unit. No Furniture, goods, accessories are included in the sale.*

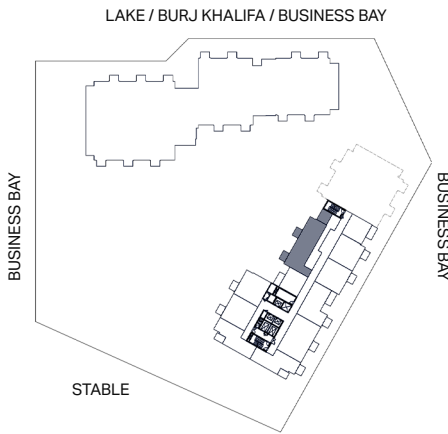


EXECUTIVE ONE BEDROOM APARTMENT - 1D1

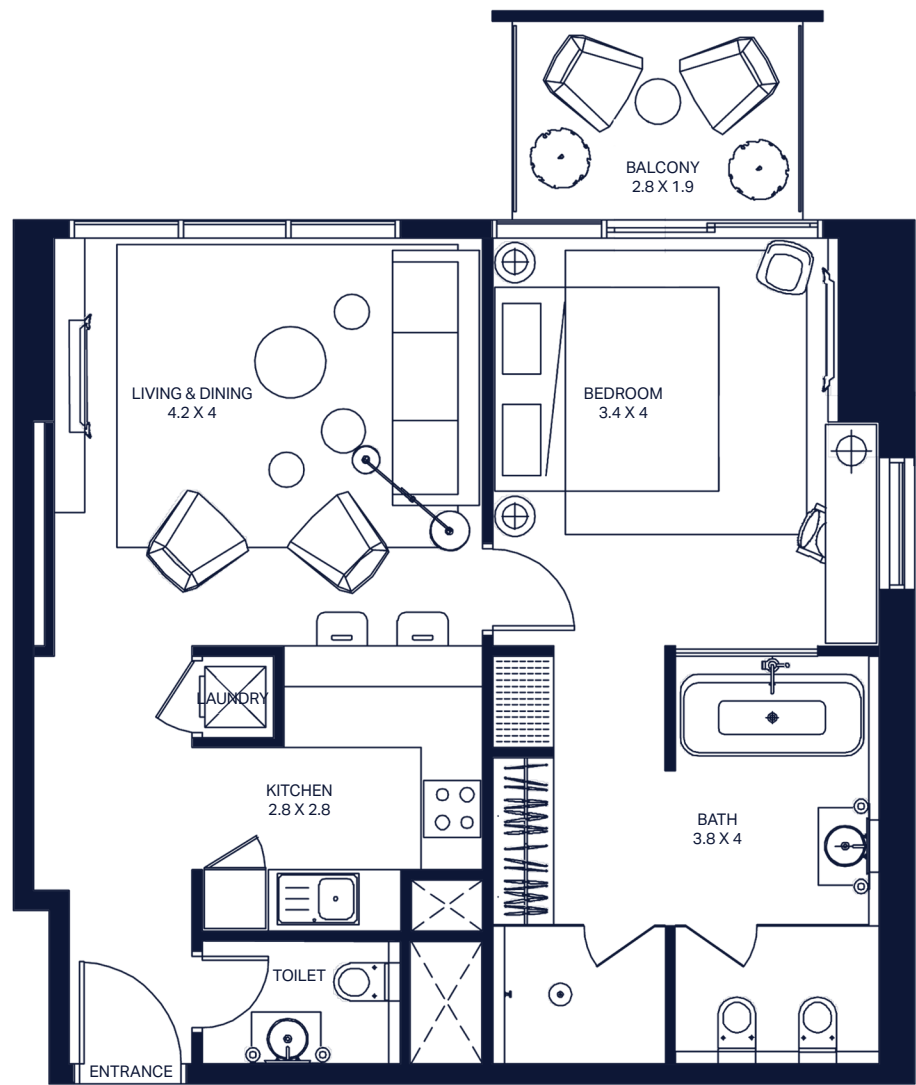


Unit Number: 1907
Floor: 19
Internal Area: 1080
Balcony Area: 265

**All the dimensions are in meter | Unit shown is typical, and actual Unit may vary in dimensions, areas, layout, material specification, orientation, and location | Some of the Units may have a mirrored layout of the above plan | Unit Windows, Facade, Balcony door location, Fixtures, Kitchen Cabinets, Sanitary ware, and Wardrobes, including each of their location as shown in the plan is indicative and subject to revision by the Seller | All fixtures, fittings, goods, accessories, and furniture reflected/displayed in this plan(s) are strictly illustrative and representational (not actual) in nature and are only for the purpose of illustrating /reflecting one of the possible layouts which the Purchaser could arrange after the Unit is handed over and do not form part of the Unit. No Furniture, goods, accessories are included in the sale.*

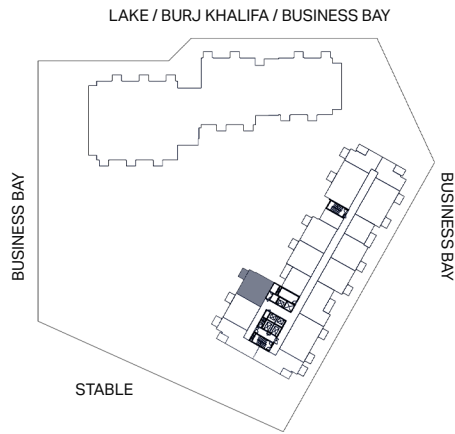


EXECUTIVE ONE BEDROOM APARTMENT - 1H1

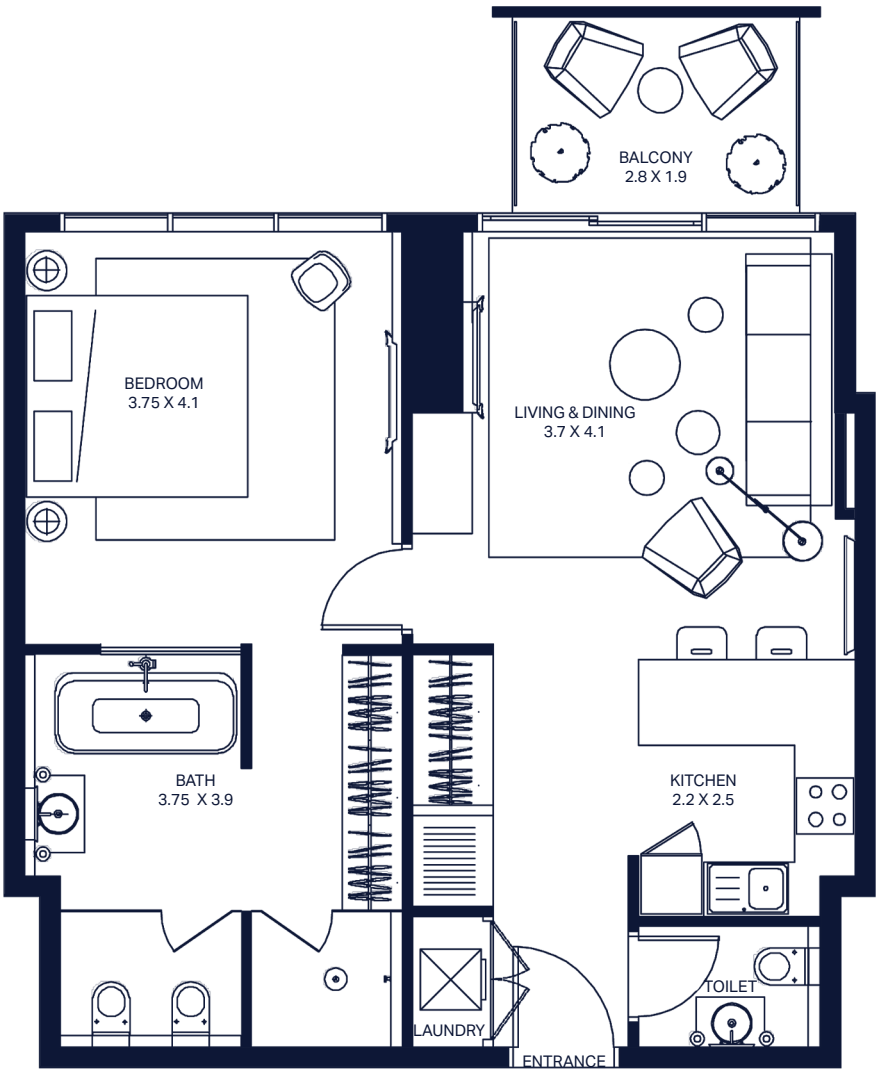


Unit Number: 1909-2009
Floor: 19-29
Internal Area: 735
Balcony Area: 60

**All the dimensions are in meter | Unit shown is typical, and actual Unit may vary in dimensions, areas, layout, material specification, orientation, and location | Some of the Units may have a mirrored layout of the above plan | Unit Windows, Facade, Balcony door location, Fixtures, Kitchen Cabinets, Sanitary ware, and Wardrobes, including each of their location as shown in the plan is indicative and subject to revision by the Seller | All fixtures, fittings, goods, accessories, and furniture reflected/displayed in this plan(s) are strictly illustrative and representational (not actual) in nature and are only for the purpose of illustrating /reflecting one of the possible layouts which the Purchaser could arrange after the Unit is handed over and do not form part of the Unit. No Furniture, goods, accessories are included in the sale.*

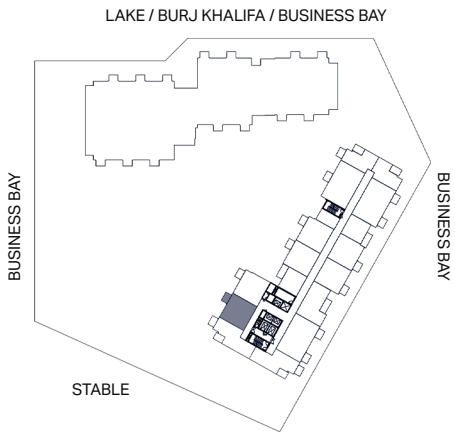


EXECUTIVE ONE BEDROOM APARTMENT - 1H2

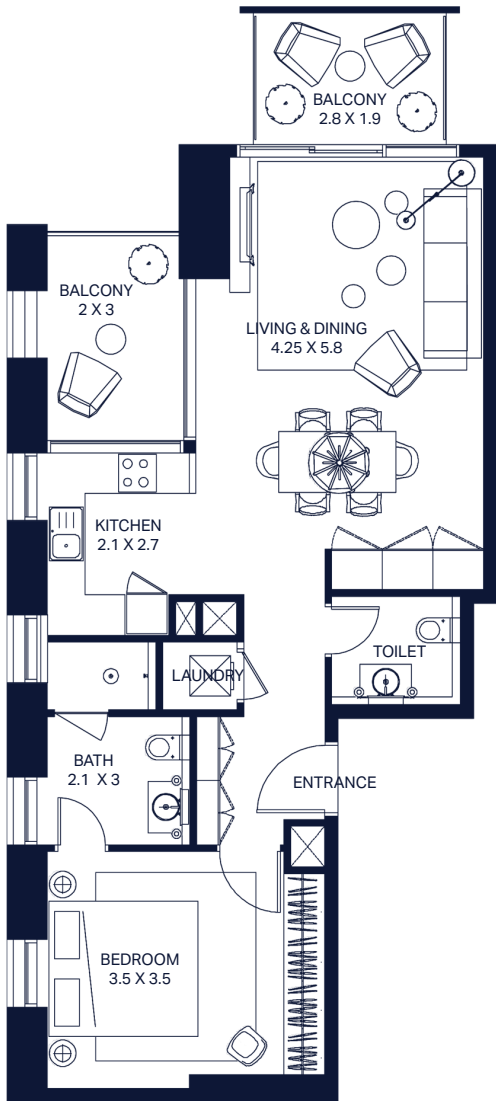


Unit Number: 1811
Floor: 18
Internal Area: 744
Balcony Area: 60

**All the dimensions are in meter | Unit shown is typical, and actual Unit may vary in dimensions, areas, layout, material specification, orientation, and location | Some of the Units may have a mirrored layout of the above plan | Unit Windows, Facade, Balcony door location, Fixtures, Kitchen Cabinets, Sanitary ware, and Wardrobes, including each of their location as shown in the plan is indicative and subject to revision by the Seller | All fixtures, fittings, goods, accessories, and furniture reflected/displayed in this plan(s) are strictly illustrative and representational (not actual) in nature and are only for the purpose of illustrating /reflecting one of the possible layouts which the Purchaser could arrange after the Unit is handed over and do not form part of the Unit. No Furniture, goods, accessories are included in the sale.*

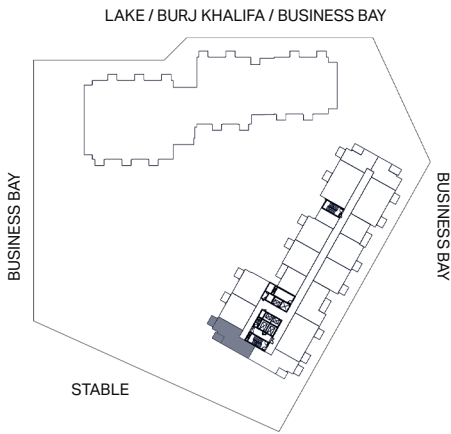


EXECUTIVE ONE BEDROOM APARTMENT - 1H3

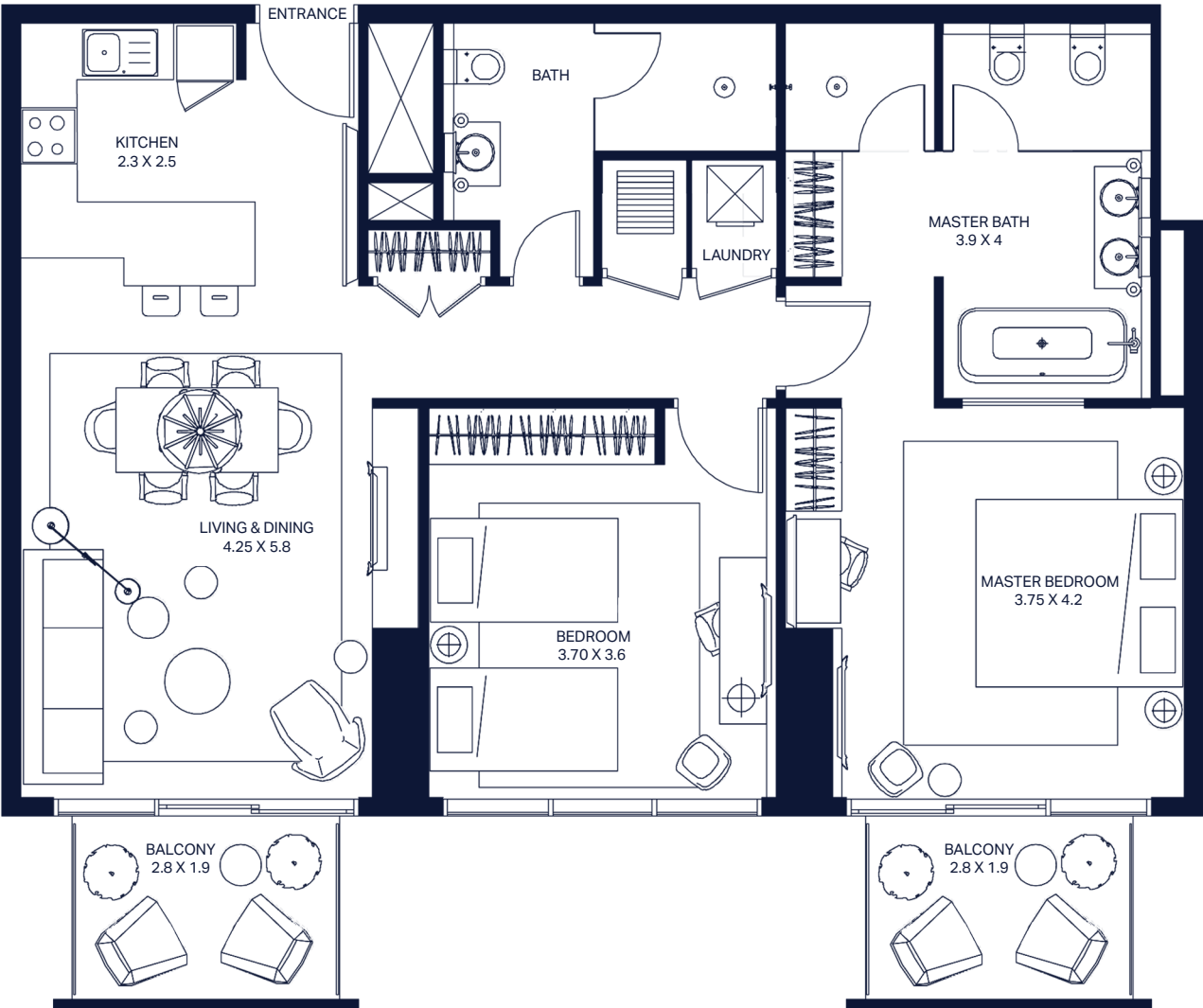


Unit Number: 1812-2011
Floor: 18-20
Internal Area: 759
Balcony Area: 133

**All the dimensions are in meter | Unit shown is typical, and actual Unit may vary in dimensions, areas, layout, material specification, orientation, and location | Some of the Units may have a mirrored layout of the above plan | Unit Windows, Facade, Balcony door location, Fixtures, Kitchen Cabinets, Sanitary ware, and Wardrobes, including each of their location as shown in the plan is indicative and subject to revision by the Seller | All fixtures, fittings, goods, accessories, and furniture reflected/displayed in this plan(s) are strictly illustrative and representational (not actual) in nature and are only for the purpose of illustrating /reflecting one of the possible layouts which the Purchaser could arrange after the Unit is handed over and do not form part of the Unit. No Furniture, goods, accessories are included in the sale.*

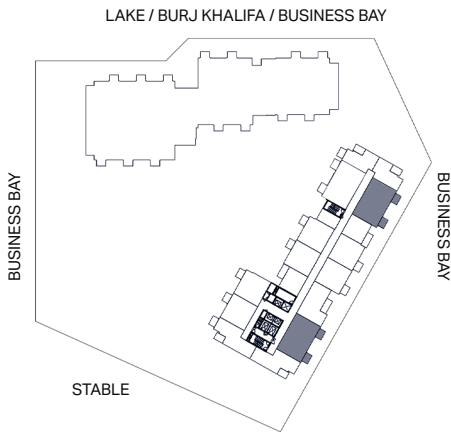


PREMIUM TWO BEDROOM APARTMENT - 2A1

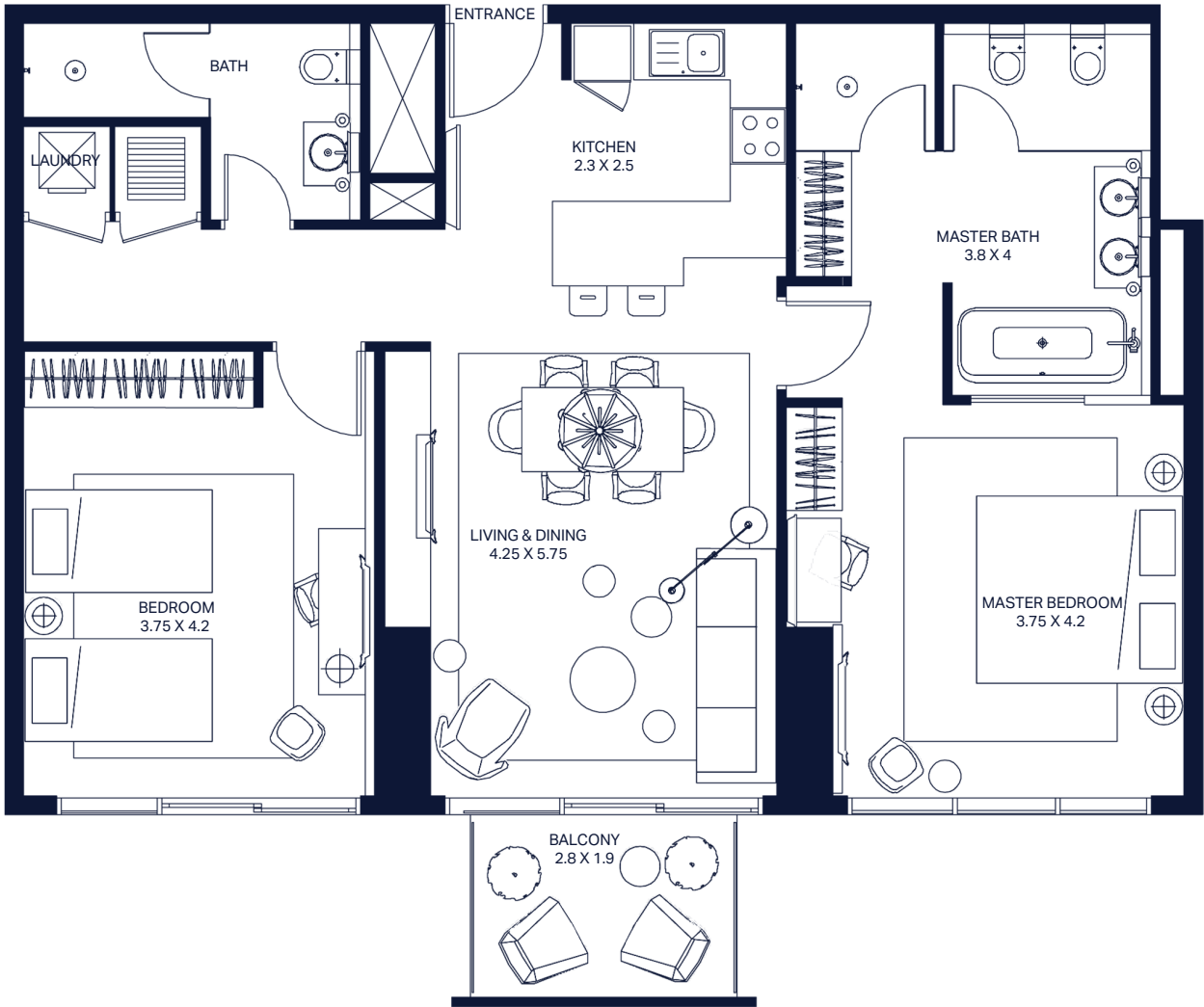


Unit Number: 607-807-2002-2402
Floor: 6-8-20-24
Internal Area: 1,153
Balcony Area: 121

**All the dimensions are in meter | Unit shown is typical, and actual Unit may vary in dimensions, areas, layout, material specification, orientation, and location | Some of the Units may have a mirrored layout of the above plan | Unit Windows, Facade, Balcony door location, Fixtures, Kitchen Cabinets, Sanitary ware, and Wardrobes, including each of their location as shown in the plan is indicative and subject to revision by the Seller | All fixtures, fittings, goods, accessories, and furniture reflected/displayed in this plan(s) are strictly illustrative and representational (not actual) in nature and are only for the purpose of illustrating /reflecting one of the possible layouts which the Purchaser could arrange after the Unit is handed over and do not form part of the Unit. No Furniture, goods, accessories are included in the sale.*

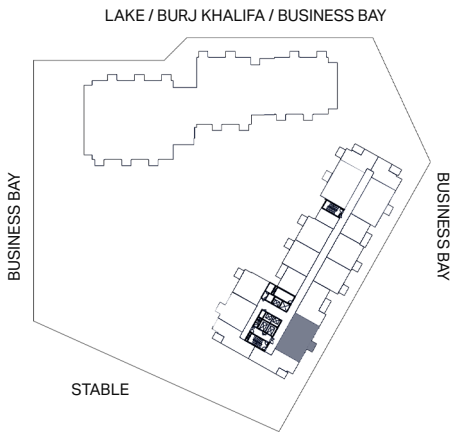


PREMIUM TWO BEDROOM APARTMENT - 2A2

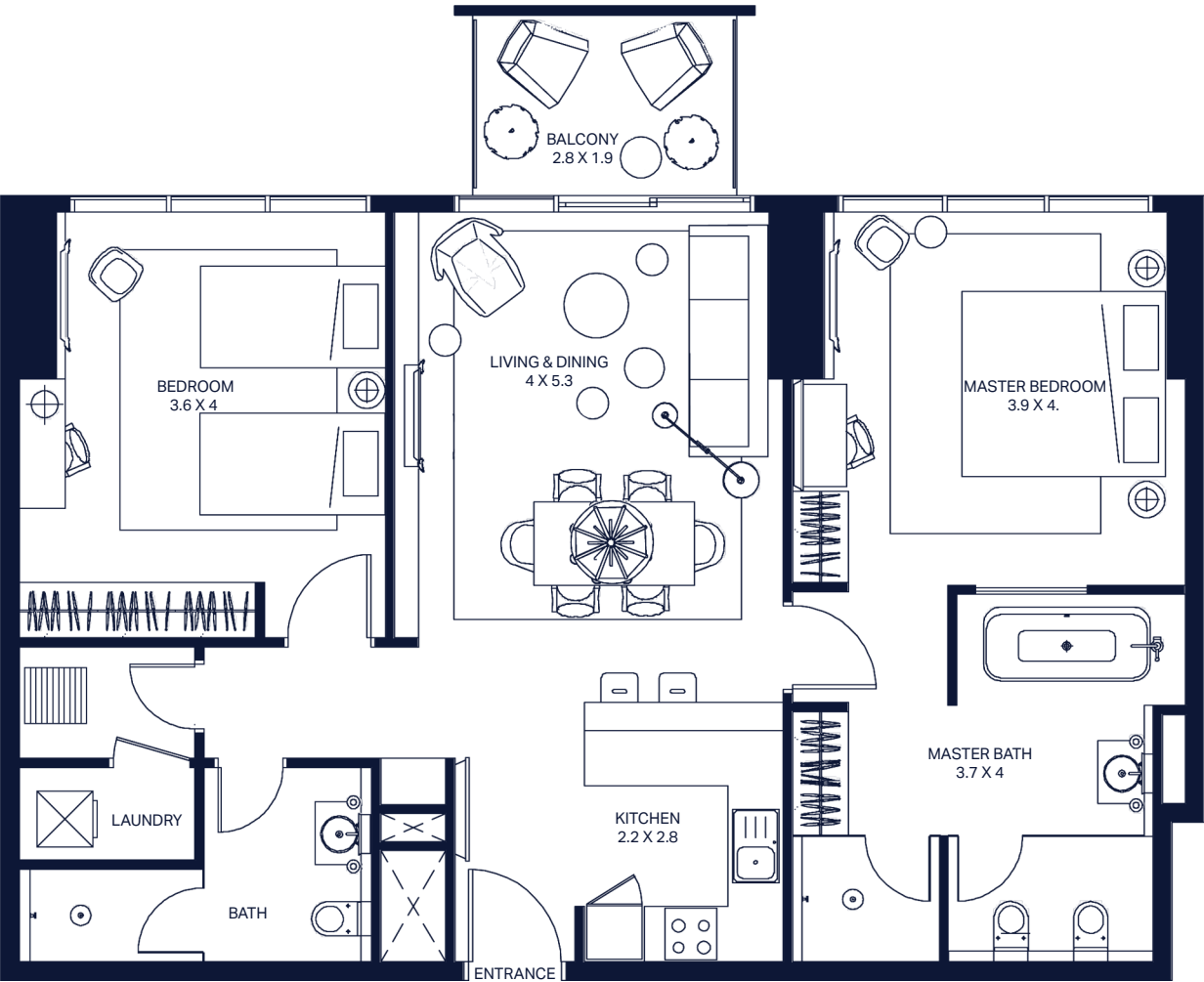


Unit Number: 502-1702-1902
Floor: 5-17-19
Internal Area: 1,137
Balcony Area: 60

**All the dimensions are in meter | Unit shown is typical, and actual Unit may vary in dimensions, areas, layout, material specification, orientation, and location | Some of the Units may have a mirrored layout of the above plan | Unit Windows, Facade, Balcony door location, Fixtures, Kitchen Cabinets, Sanitary ware, and Wardrobes, including each of their location as shown in the plan is indicative and subject to revision by the Seller | All fixtures, fittings, goods, accessories, and furniture reflected/displayed in this plan(s) are strictly illustrative and representational (not actual) in nature and are only for the purpose of illustrating /reflecting one of the possible layouts which the Purchaser could arrange after the Unit is handed over and do not form part of the Unit. No Furniture, goods, accessories are included in the sale.*

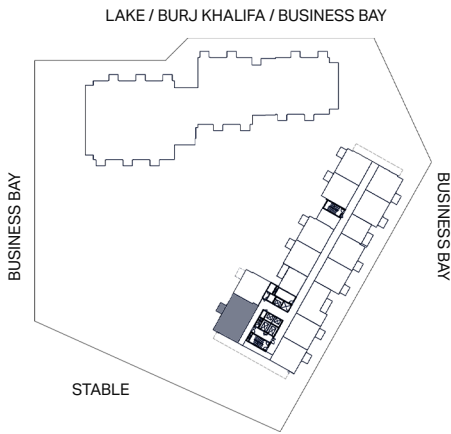


PREMIUM TWO BEDROOM APARTMENT - 2H1

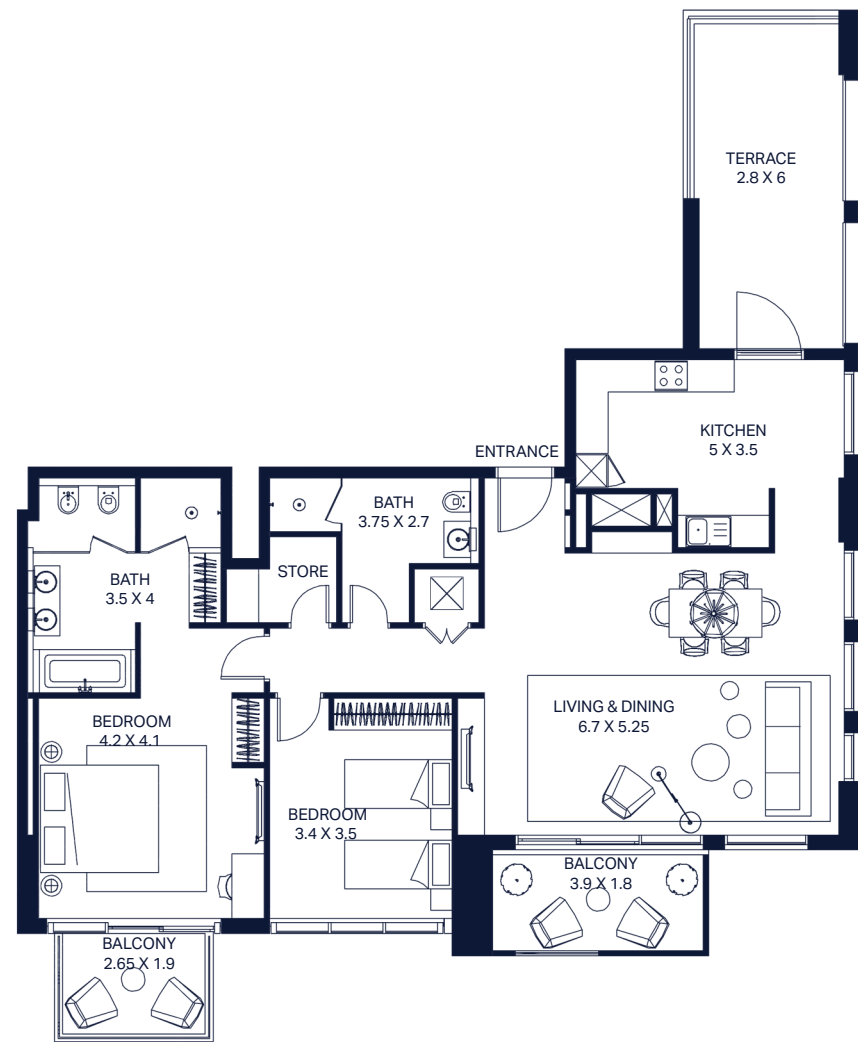


Unit Number: 315
Floor: 3
Internal Area: 1,123
Balcony Area: 60

**All the dimensions are in meter | Unit shown is typical, and actual Unit may vary in dimensions, areas, layout, material specification, orientation, and location | Some of the Units may have a mirrored layout of the above plan | Unit Windows, Facade, Balcony door location, Fixtures, Kitchen Cabinets, Sanitary ware, and Wardrobes, including each of their location as shown in the plan is indicative and subject to revision by the Seller | All fixtures, fittings, goods, accessories, and furniture reflected/displayed in this plan(s) are strictly illustrative and representational (not actual) in nature and are only for the purpose of illustrating /reflecting one of the possible layouts which the Purchaser could arrange after the Unit is handed over and do not form part of the Unit. No Furniture, goods, accessories are included in the sale.*

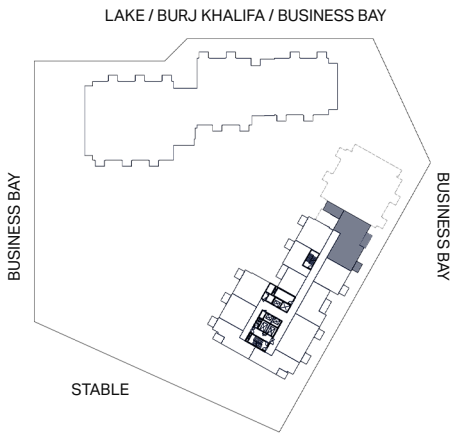


EXECUTIVE TWO BEDROOM APARTMENT - 2B1

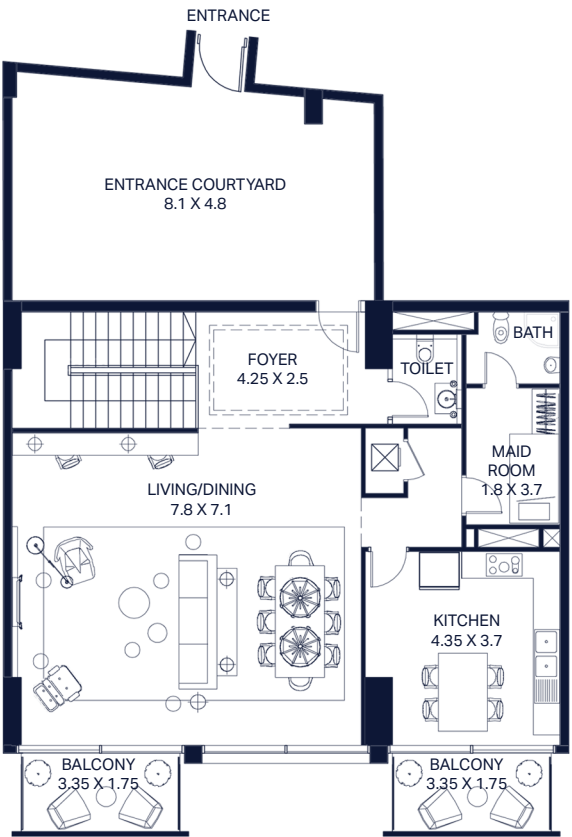


Unit Number: 2005
Floor: 20
Internal Area: 1,387
Balcony Area: 361

**All the dimensions are in meter | Unit shown is typical, and actual Unit may vary in dimensions, areas, layout, material specification, orientation, and location | Some of the Units may have a mirrored layout of the above plan | Unit Windows, Facade, Balcony door location, Fixtures, Kitchen Cabinets, Sanitary ware, and Wardrobes, including each of their location as shown in the plan is indicative and subject to revision by the Seller | All fixtures, fittings, goods, accessories, and furniture reflected/displayed in this plan(s) are strictly illustrative and representational (not actual) in nature and are only for the purpose of illustrating /reflecting one of the possible layouts which the Purchaser could arrange after the Unit is handed over and do not form part of the Unit. No Furniture, goods, accessories are included in the sale.*



DUPLEX APARTMENT - P2-04



ENTRY LEVEL (2nd FLOOR)

Unit Number: P2-04
Floor: P2
Internal Area: 2619
Balcony Area: 836

**All the dimensions are in meter | Unit shown is typical, and actual Unit may vary in dimensions, areas, layout, material specification, orientation, and location | Some of the Units may have a mirrored layout of the above plan | Unit Windows, Facade, Balcony door location, Fixtures, Kitchen Cabinets, Sanitary ware, and Wardrobes, including each of their location as shown in the plan is indicative and subject to revision by the Seller | All fixtures, fittings, goods, accessories, and furniture reflected/displayed in this plan(s) are strictly illustrative and representational (not actual) in nature and are only for the purpose of illustrating /reflecting one of the possible layouts which the Purchaser could arrange after the Unit is handed over and do not form part of the Unit. No Furniture, goods, accessories are included in the sale.*

LOWER LEVEL

