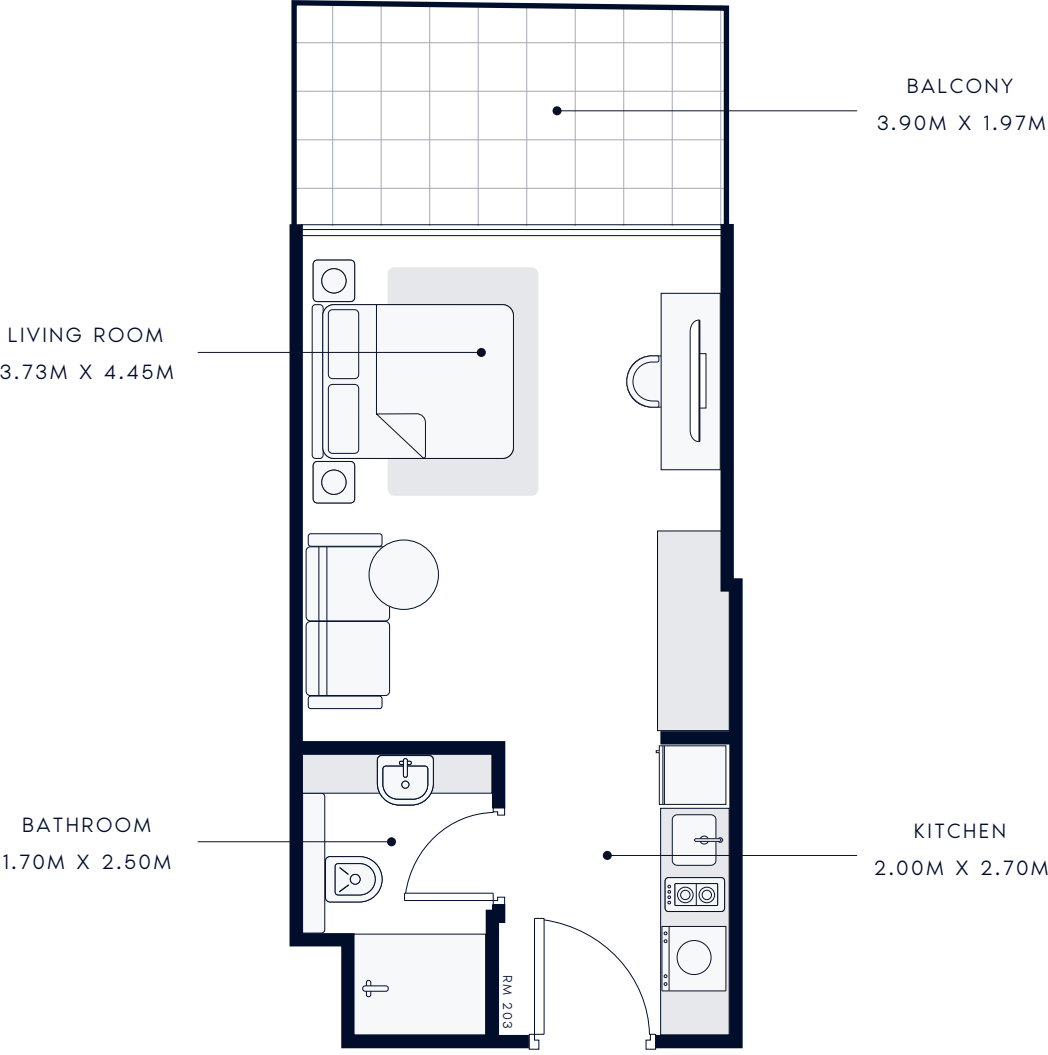


RIVIERA - 51

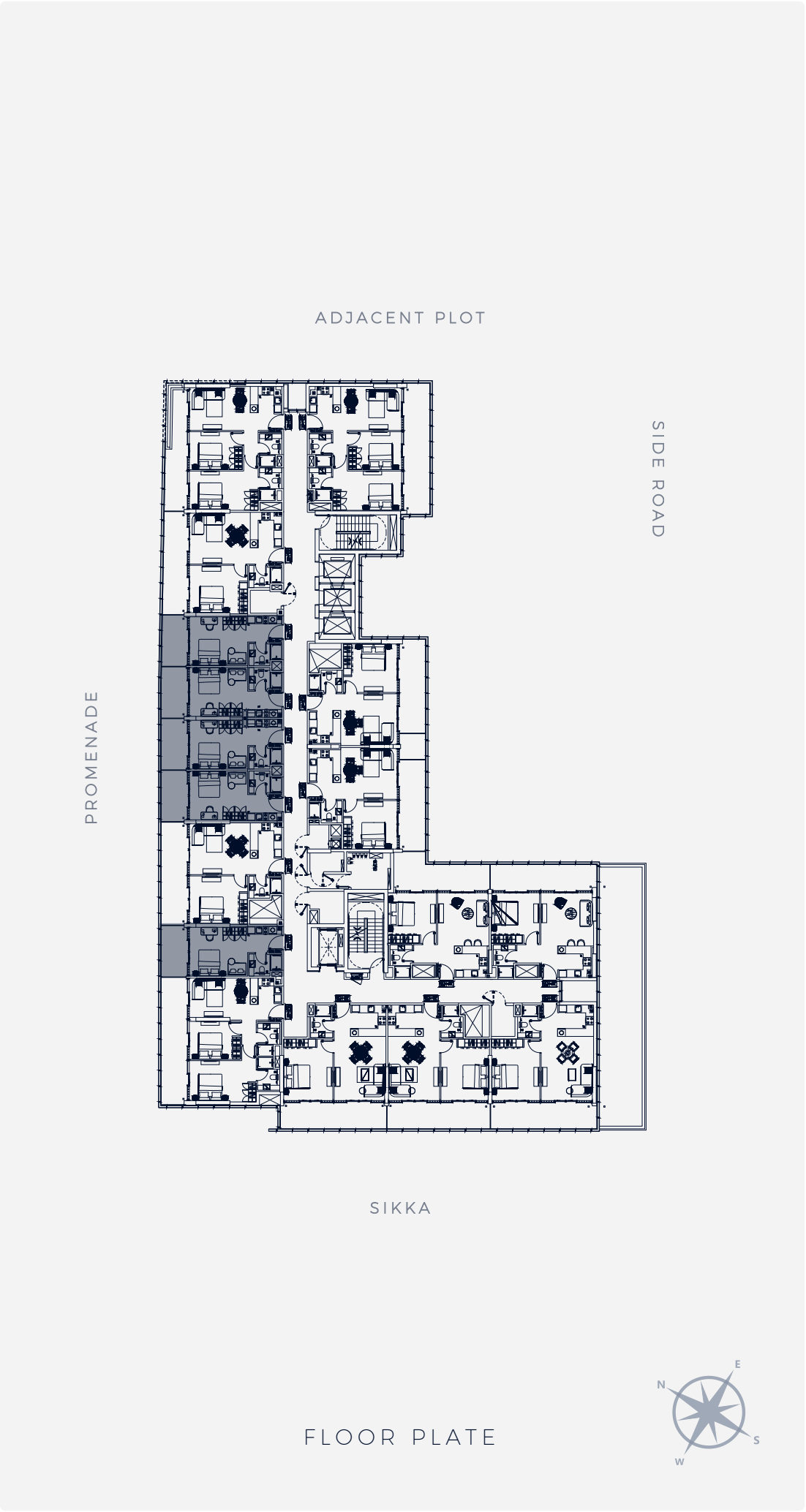
TYPICAL FLOOR PLANS

STUDIO TYPE 1
1st to 7th Floor



SUIT AREA: 305.16 SQ.FT | TOTAL AREA: 388.15 SQ.FT

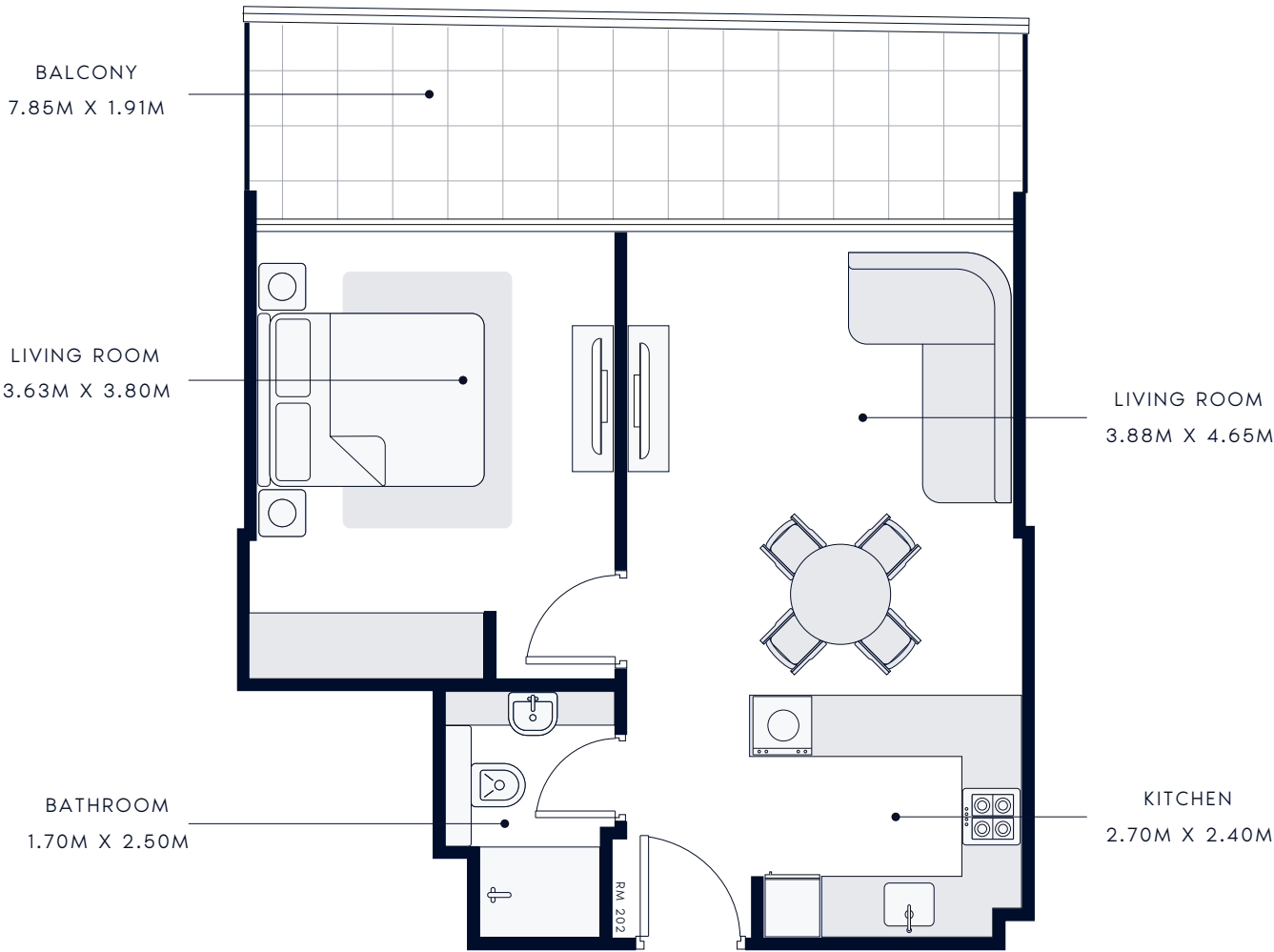
TYPICAL UNITS



FLOOR PLATE

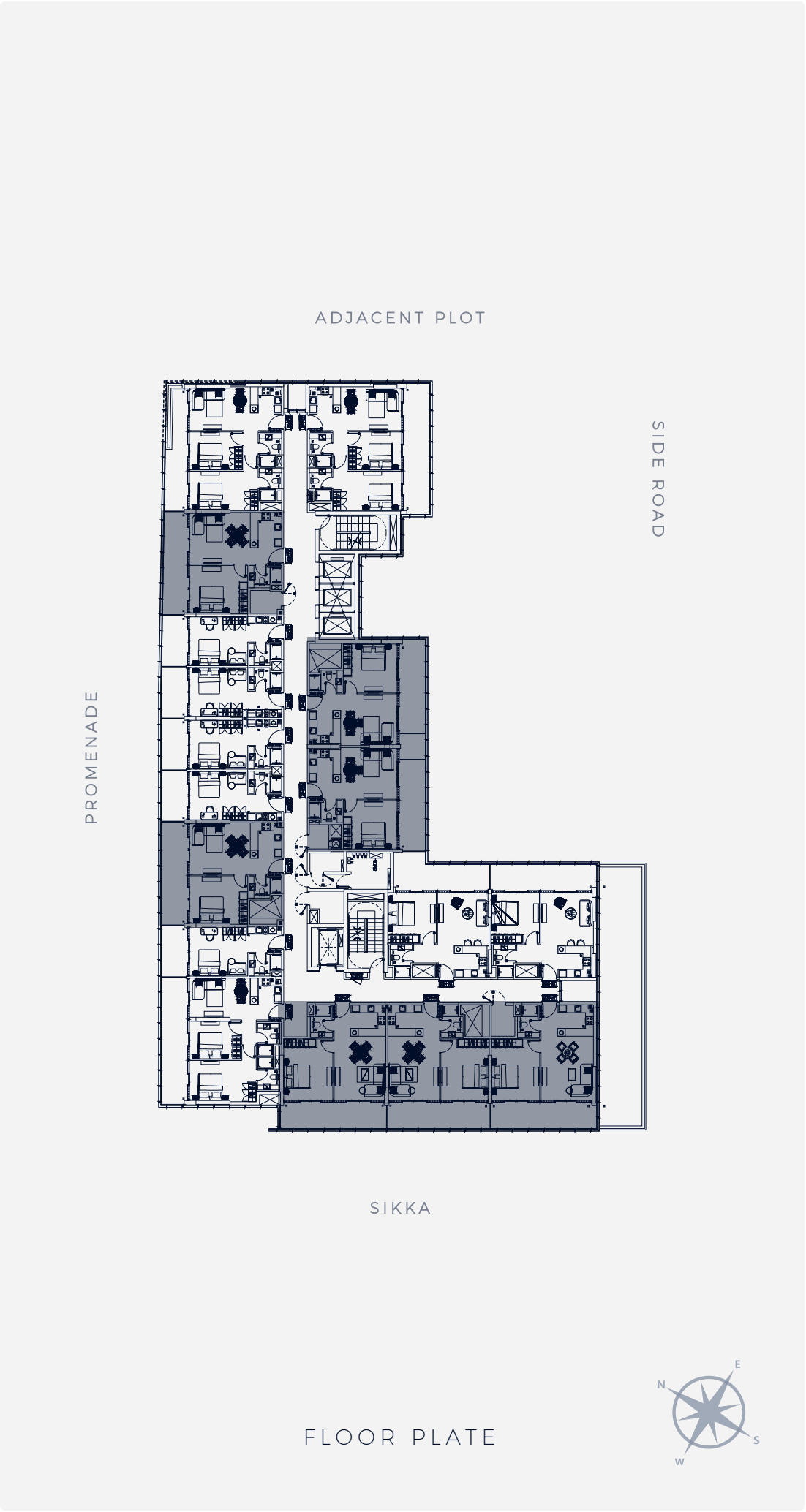


1 BEDROOM TYPE 1
1st to 7th Floor

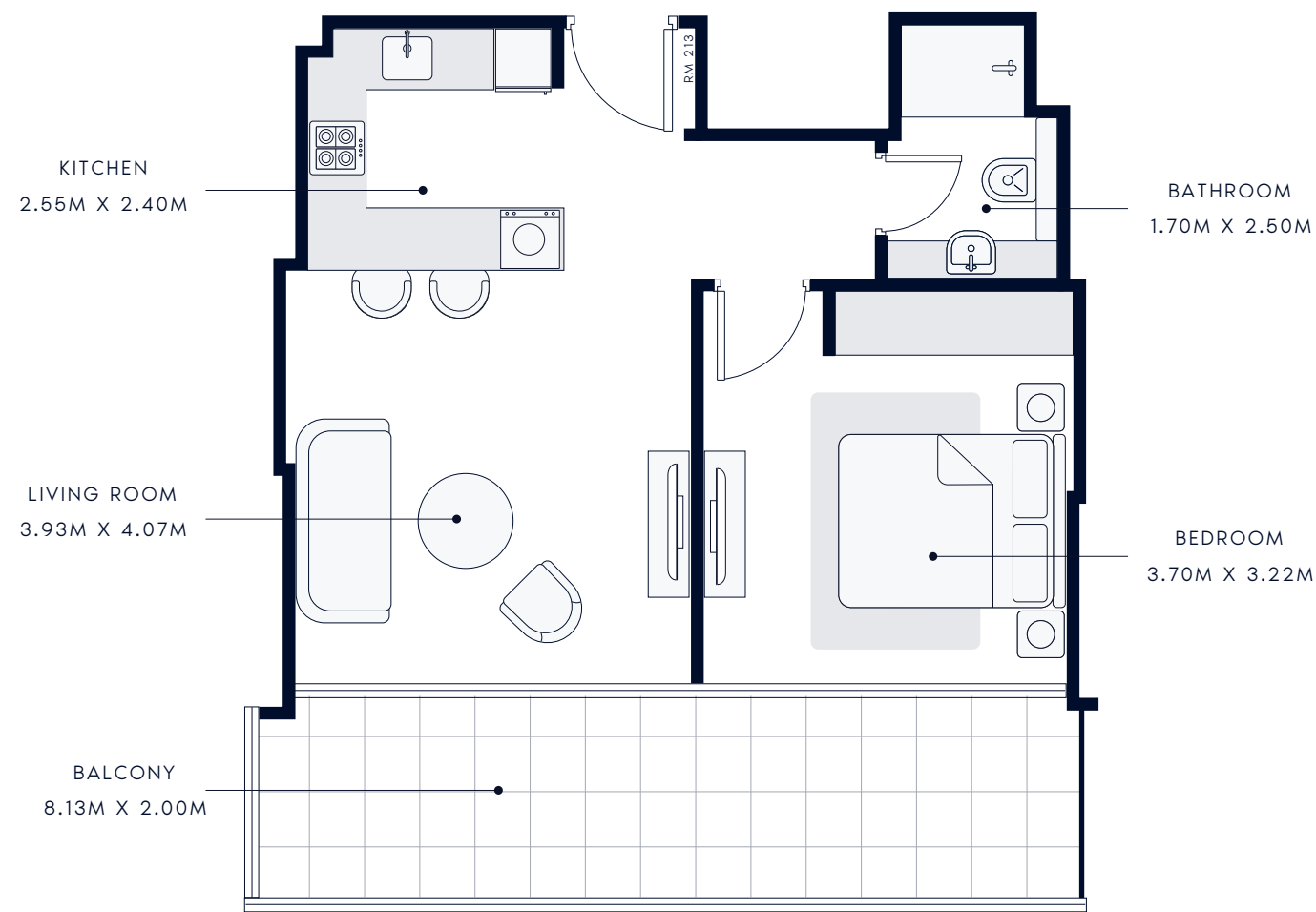


SUIT AREA: 558.11 SQ.FT | TOTAL AREA: 715.38 SQ.FT

TYPICAL UNITS

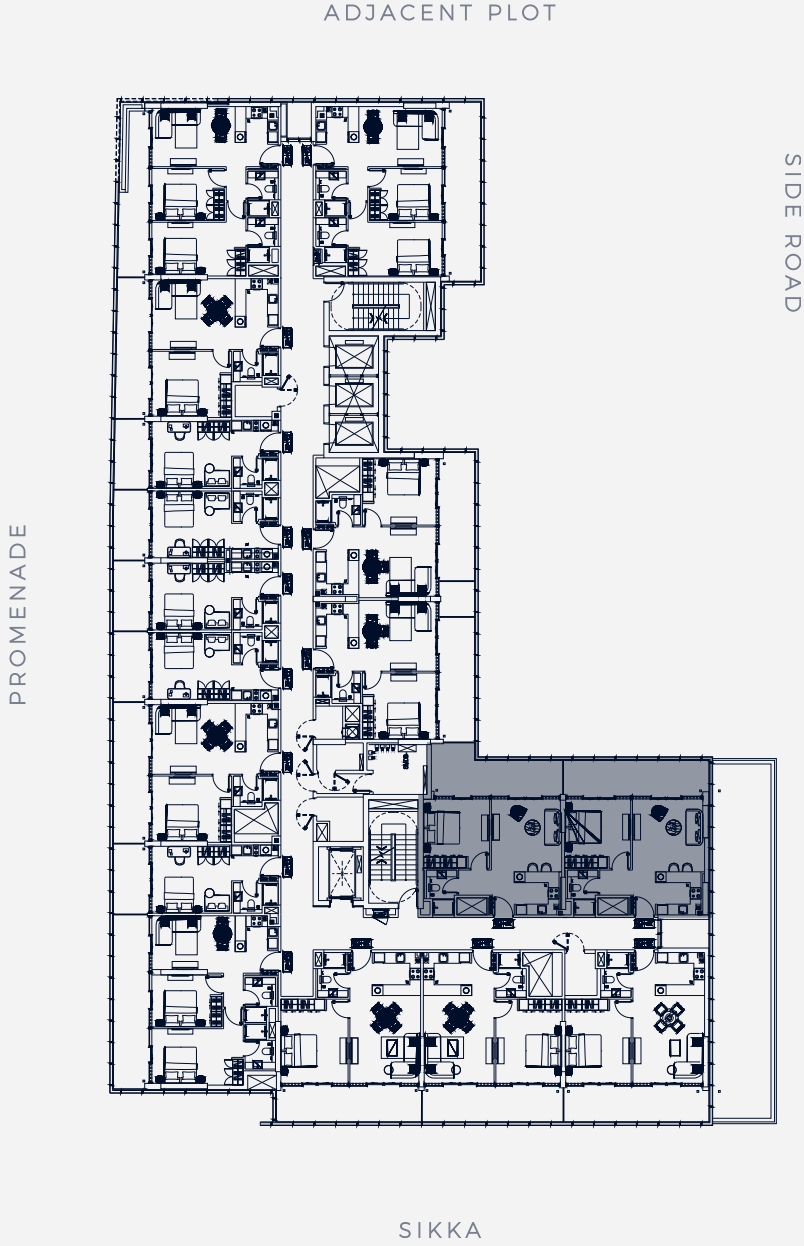


1 BEDROOM TYPE 2
1st to 7th Floor



SUIT AREA: 546.60 SQ.FT | TOTAL AREA: 723.13 SQ.FT

TYPICAL UNITS

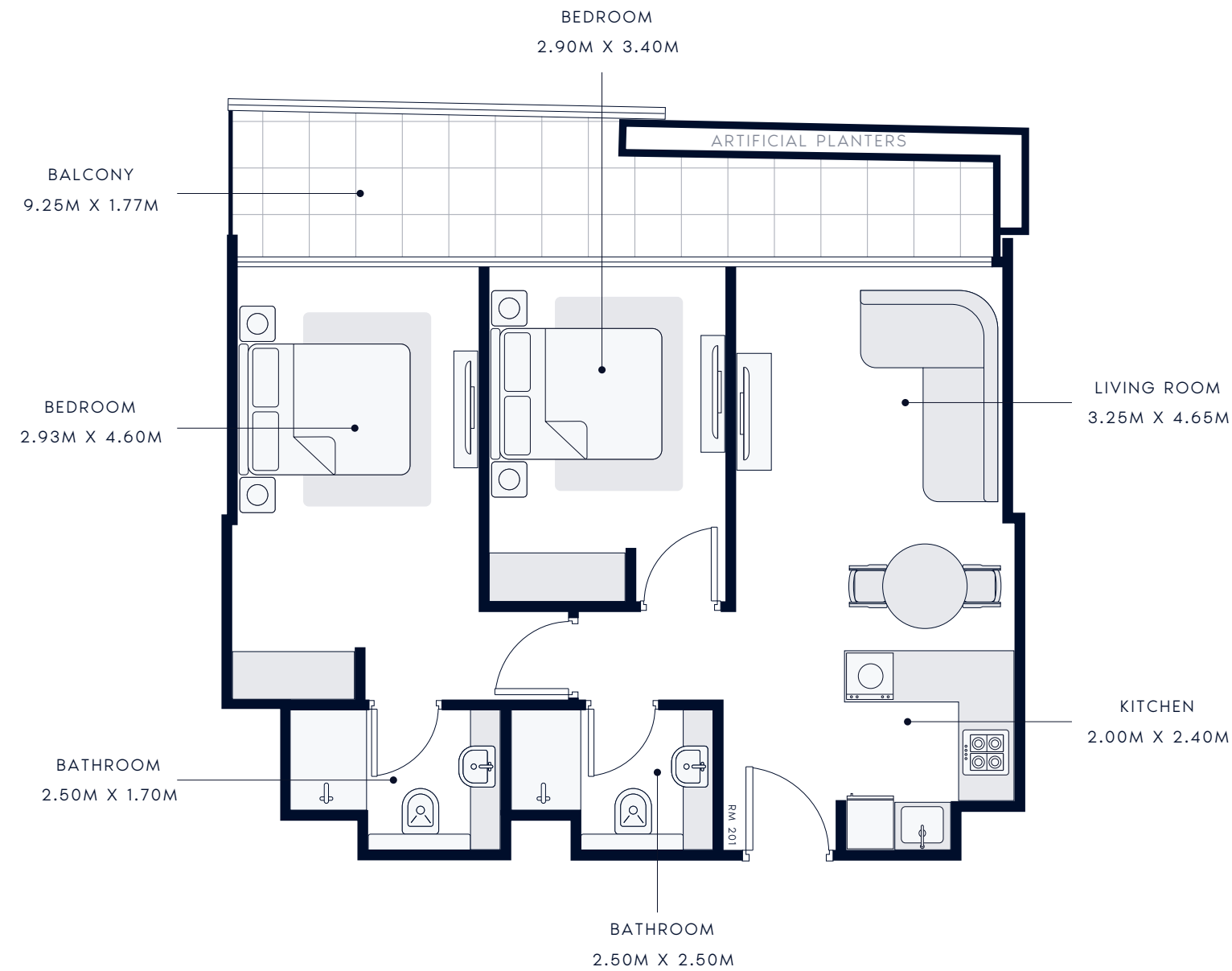


FLOOR PLATE



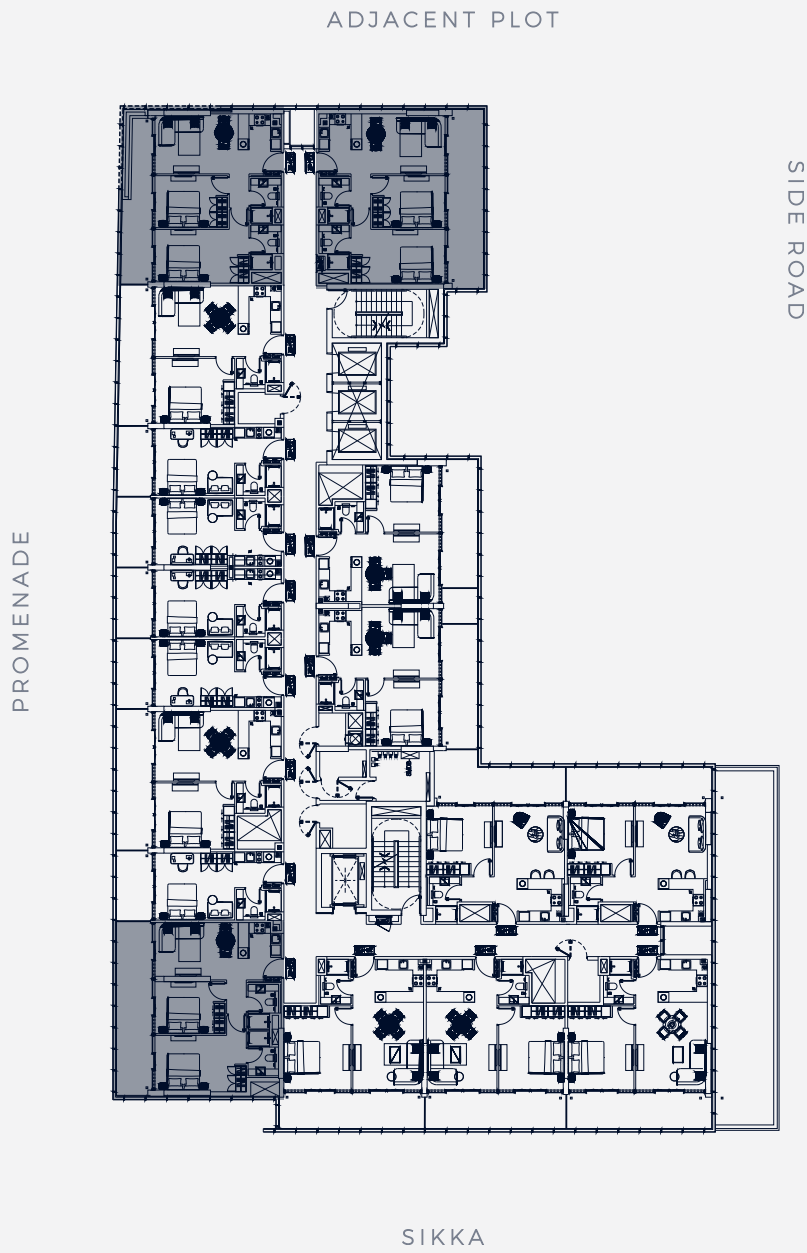
2 BEDROOM TYPE 1

1st to 7th Floor



SUIT AREA: 723.56 SQ.FT | TOTAL AREA: 874.68 SQ.FT

TYPICAL UNITS

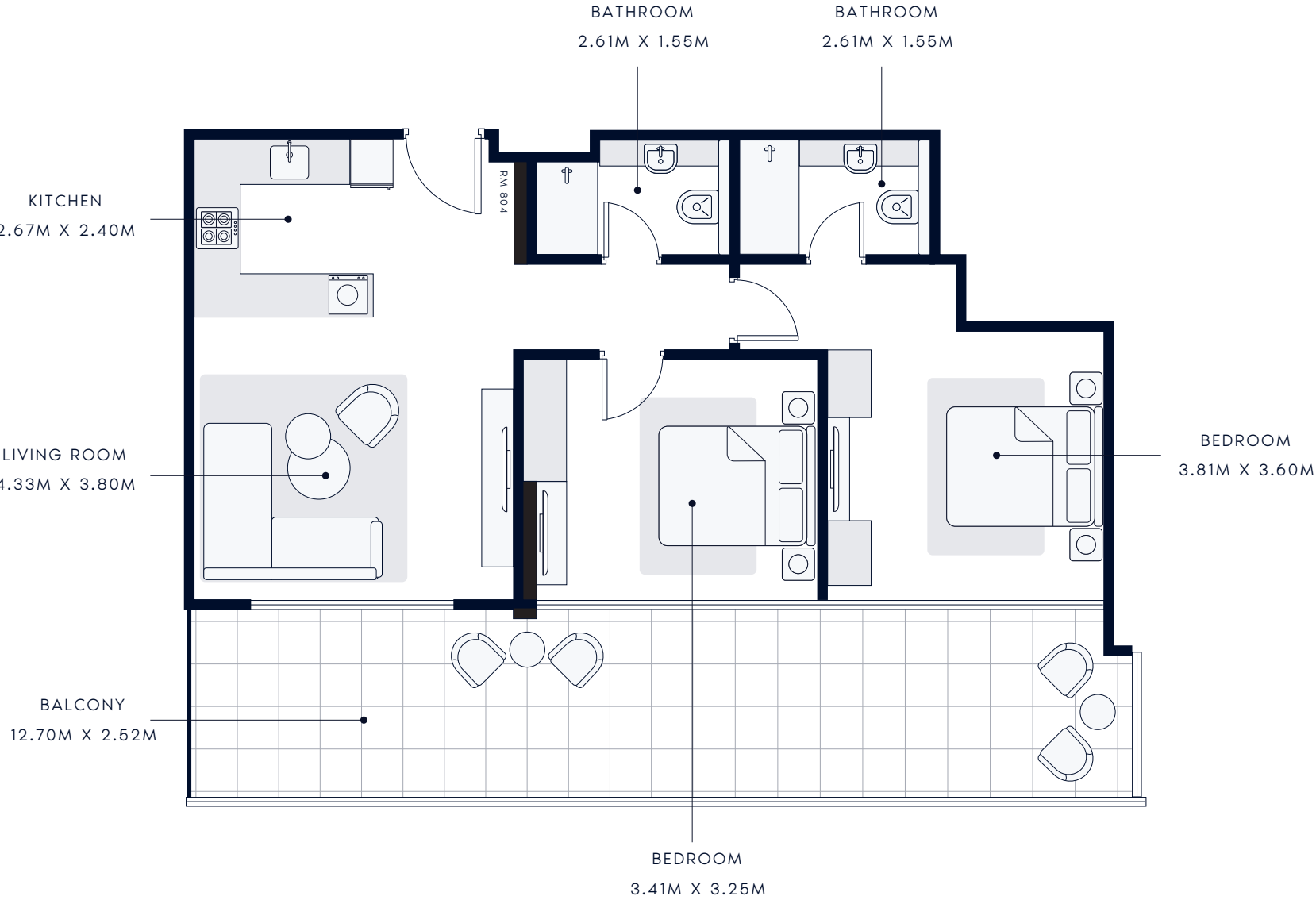


FLOOR PLATE



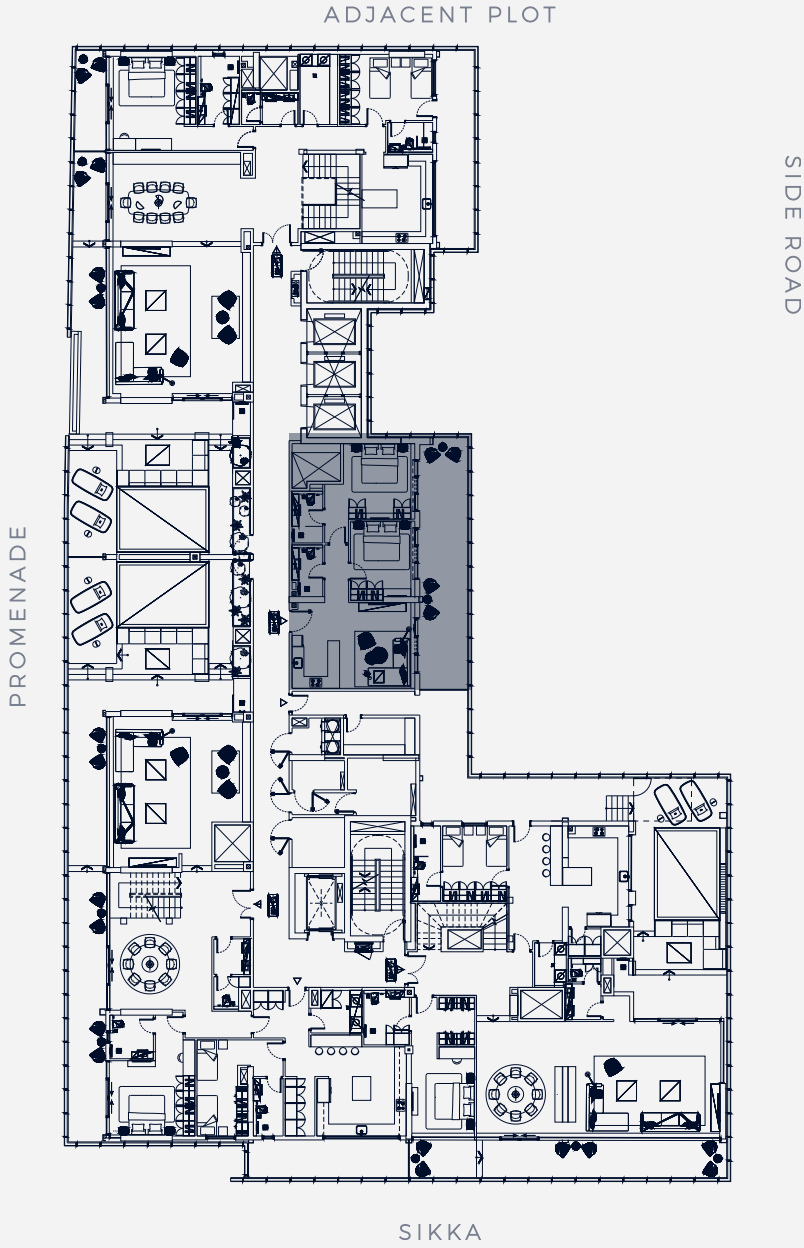
2 BEDROOM TYPE 2

8th Floor



SUIT AREA: 795.78 SQ.FT | TOTAL AREA: 1138.94 SQ.FT

TYPICAL UNITS

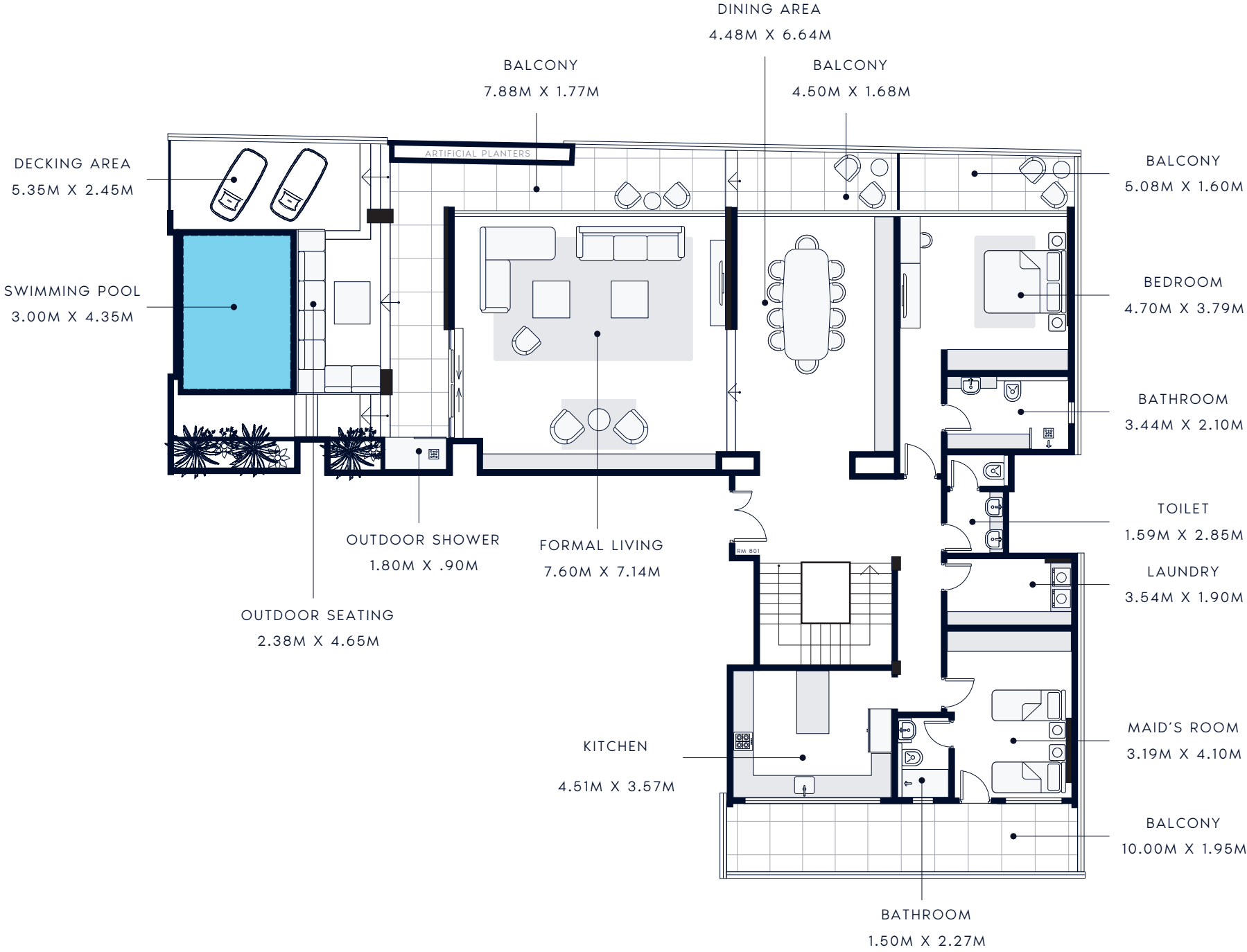


FLOOR PLATE



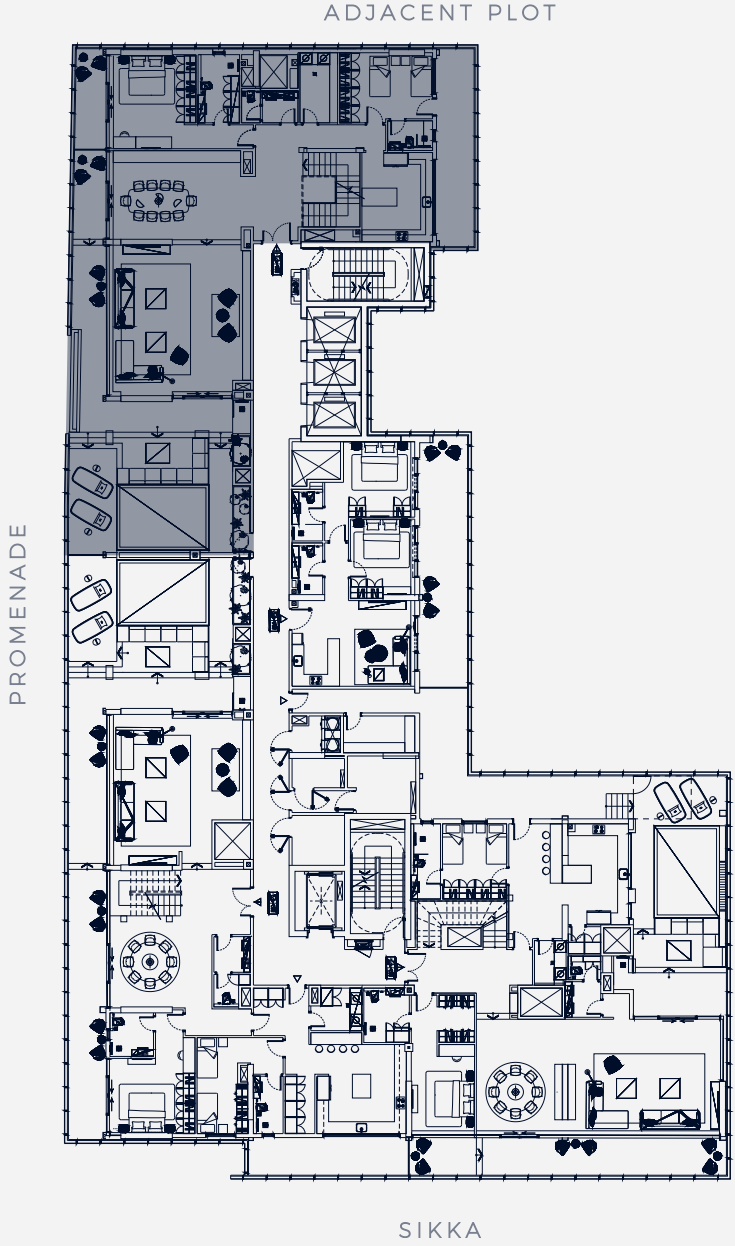
PENTHOUSE TYPE 1

8th Floor



SUIT AREA: 2243.86 SQ.FT | TOTAL AREA: 3527.69 SQ.FT

TYPICAL UNITS

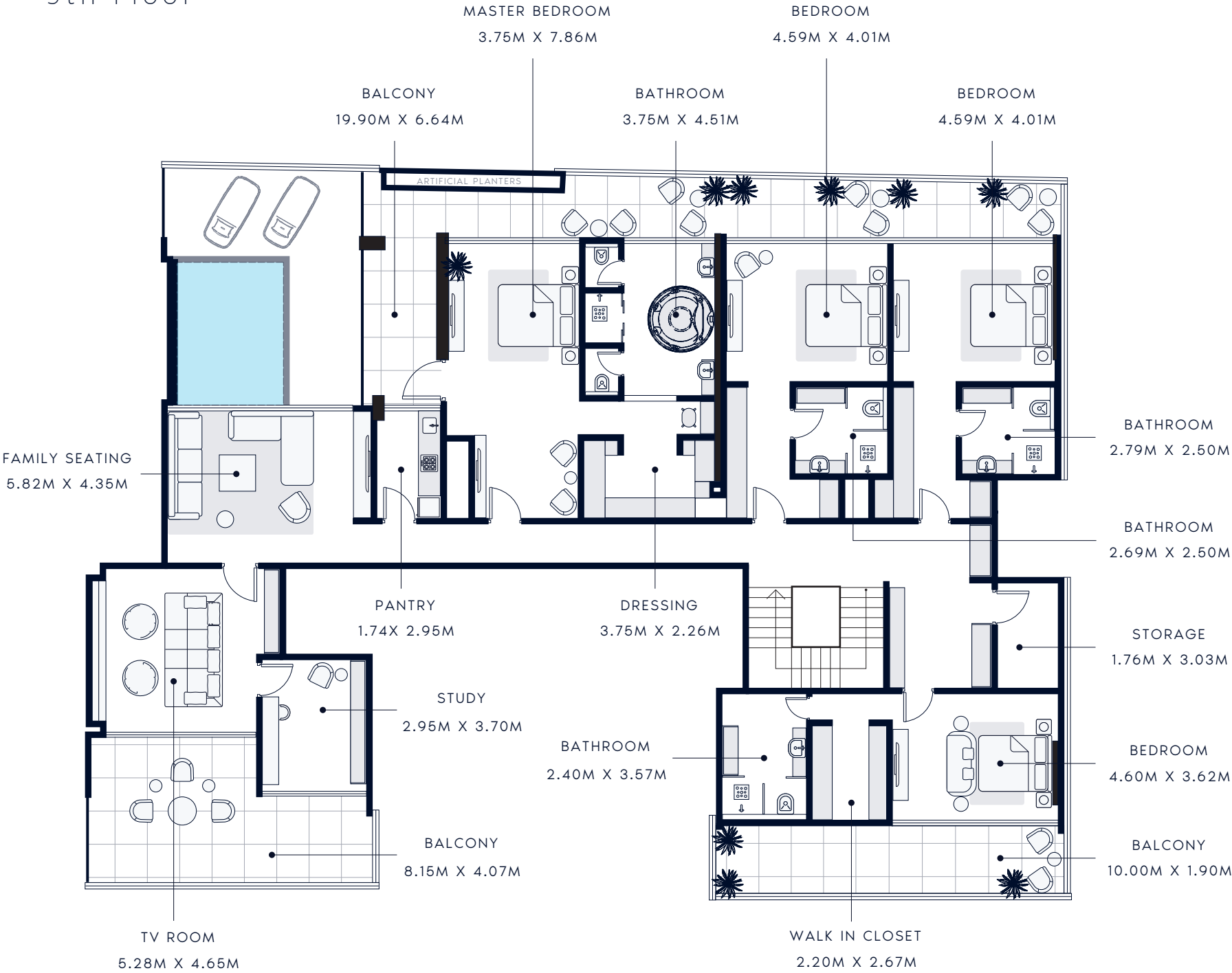


FLOOR PLATE



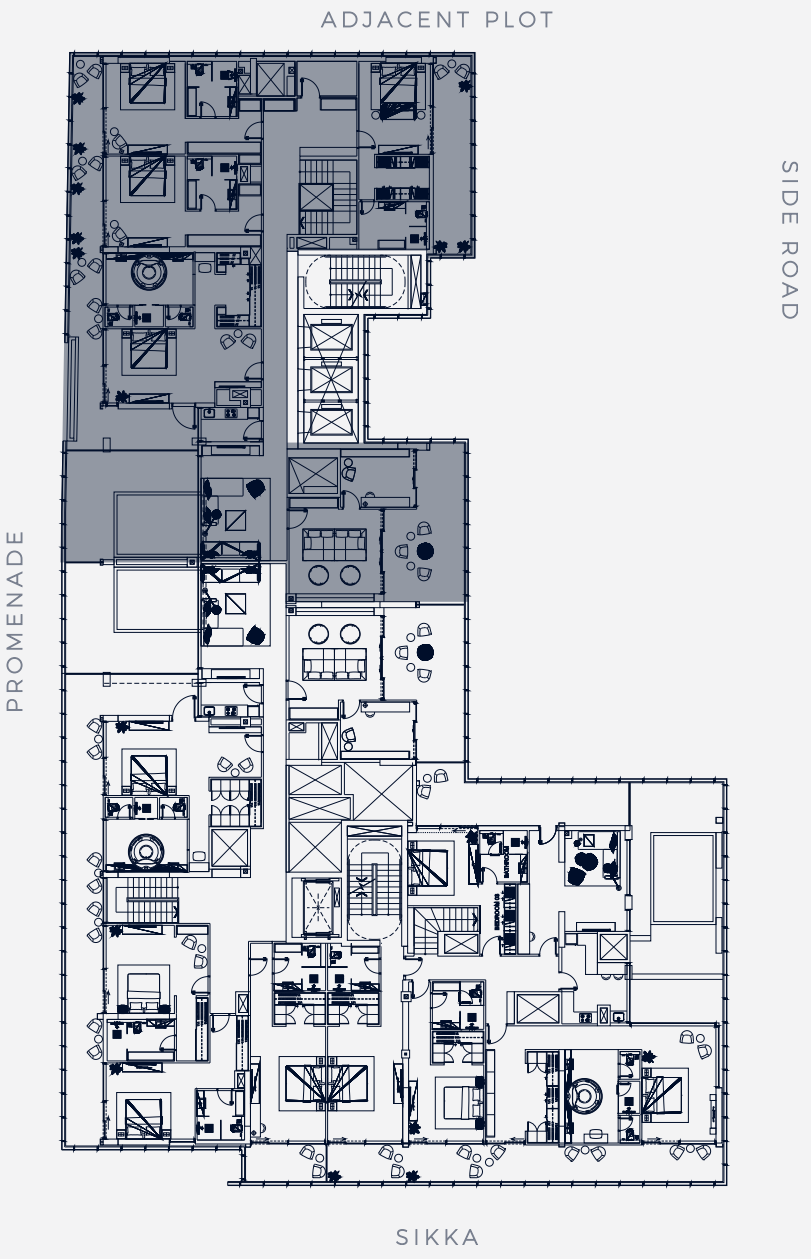
PENTHOUSE TYPE 1

9th Floor



SUIT AREA: 3240.18 SQ.FT | TOTAL AREA: 4204.53 SQ.FT

TYPICAL UNITS

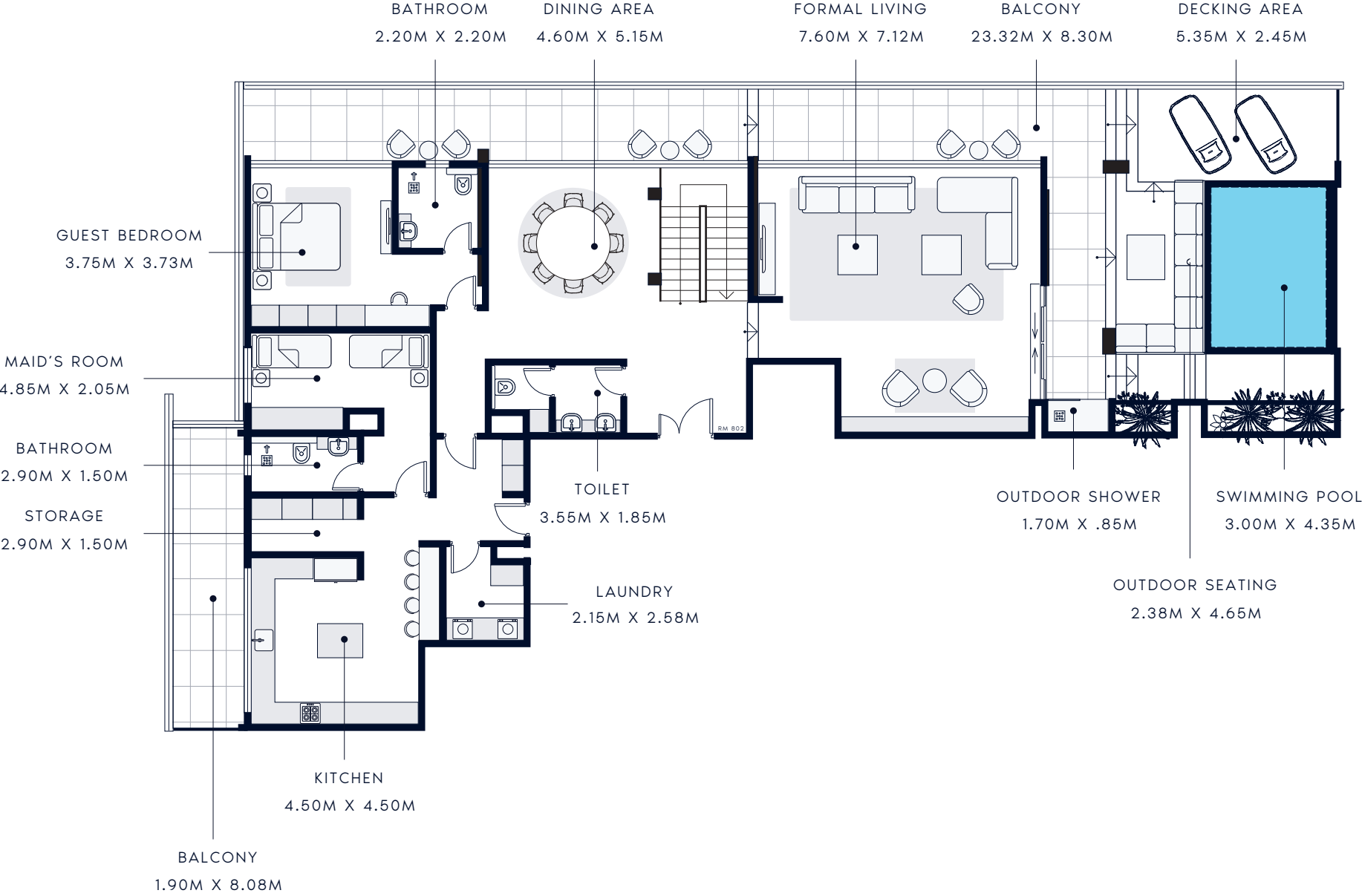


FLOOR PLATE



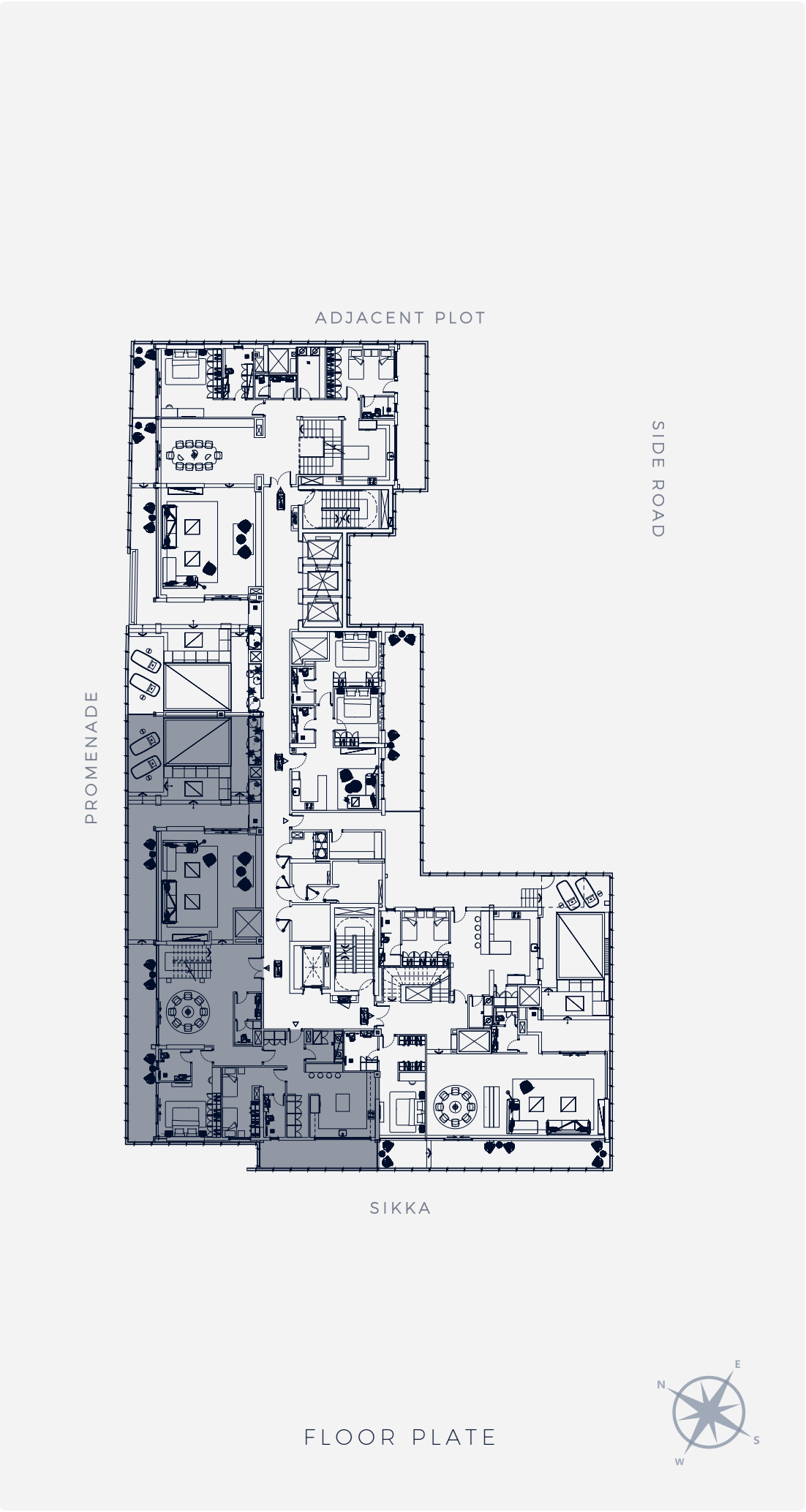
PENTHOUSE TYPE 2

8th Floor



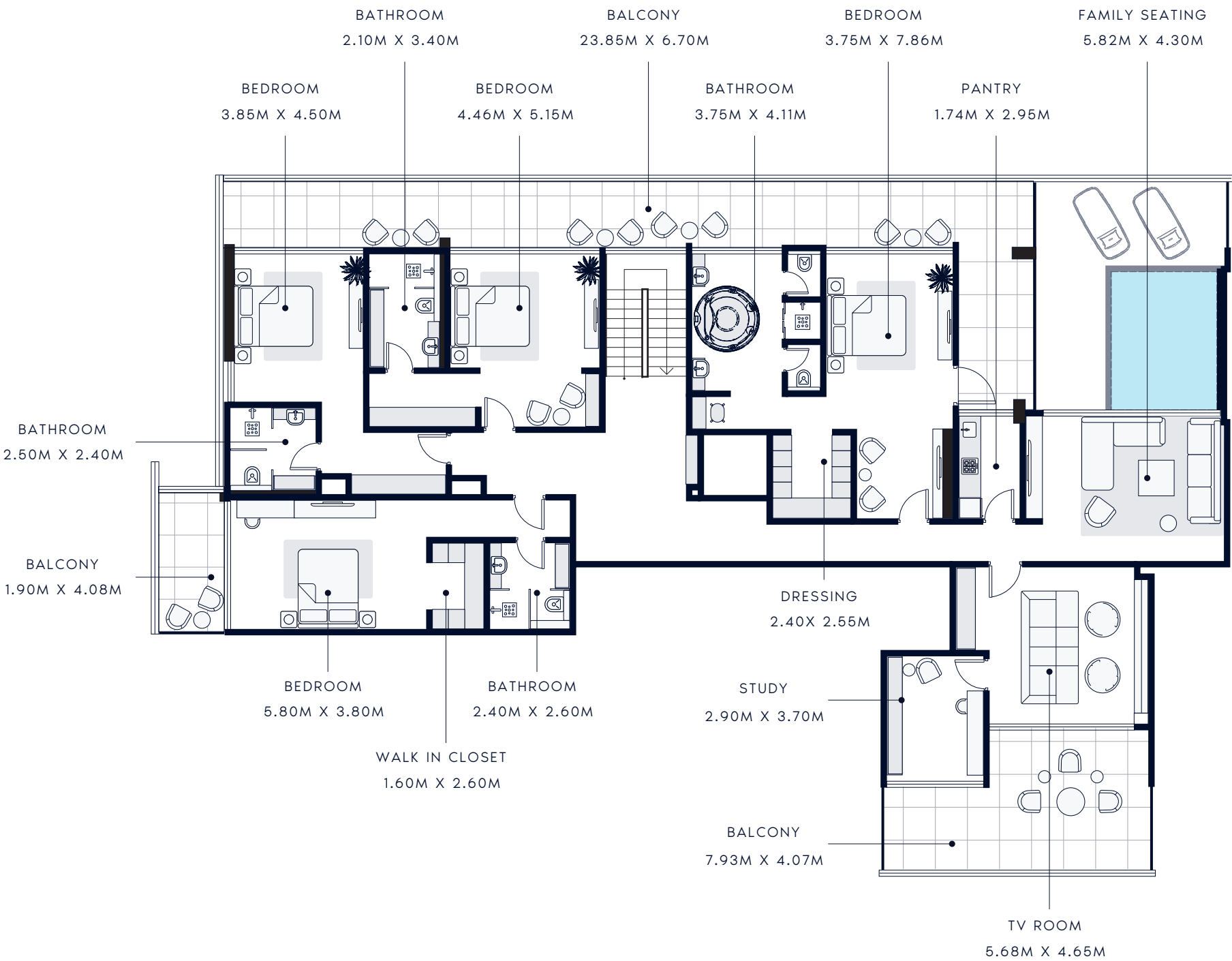
SUIT AREA: 2189.29 SQ.FT | TOTAL AREA: 3598.41 SQ.FT

TYPICAL UNITS



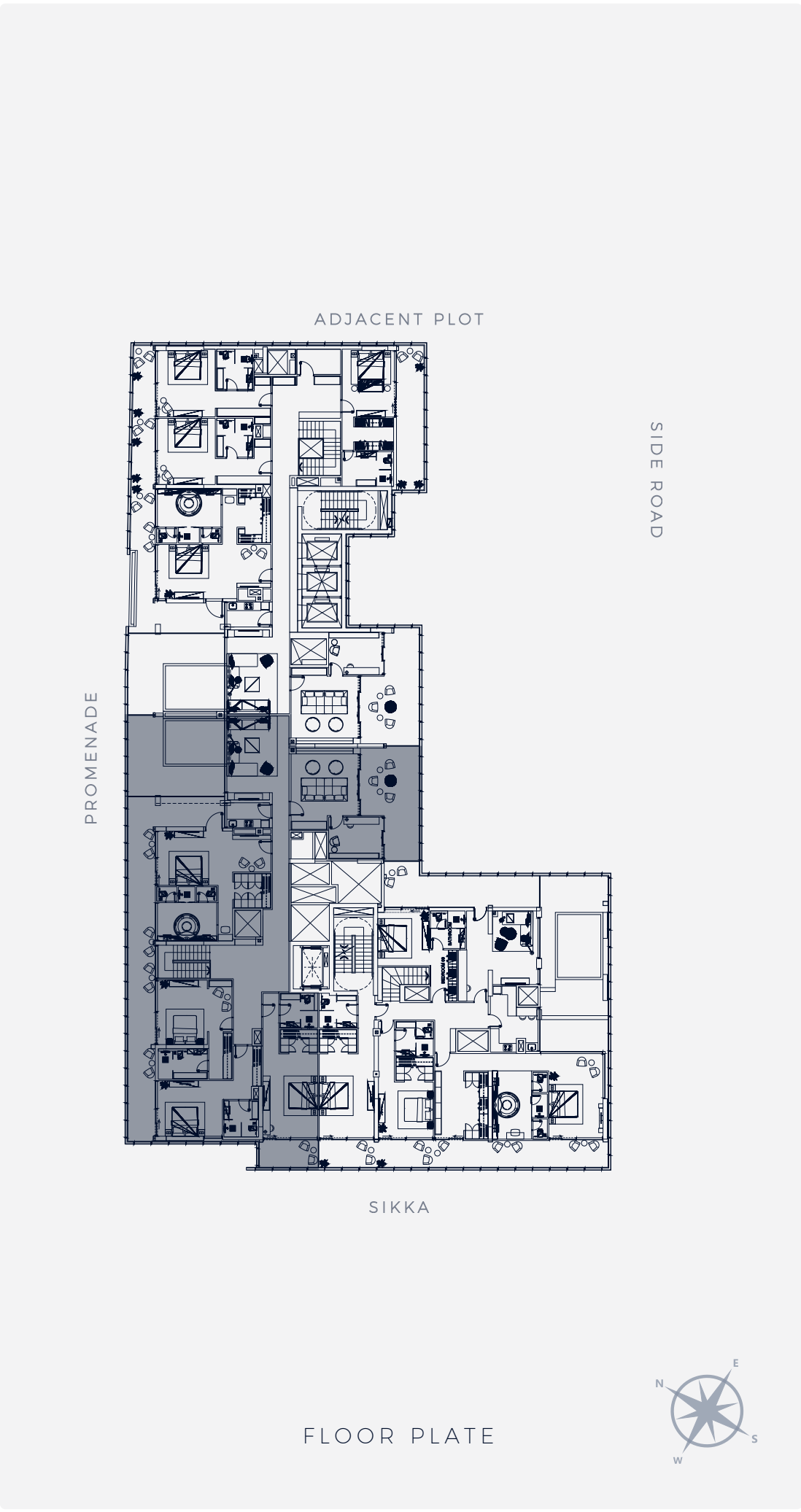
PENTHOUSE TYPE 2

9th Floor



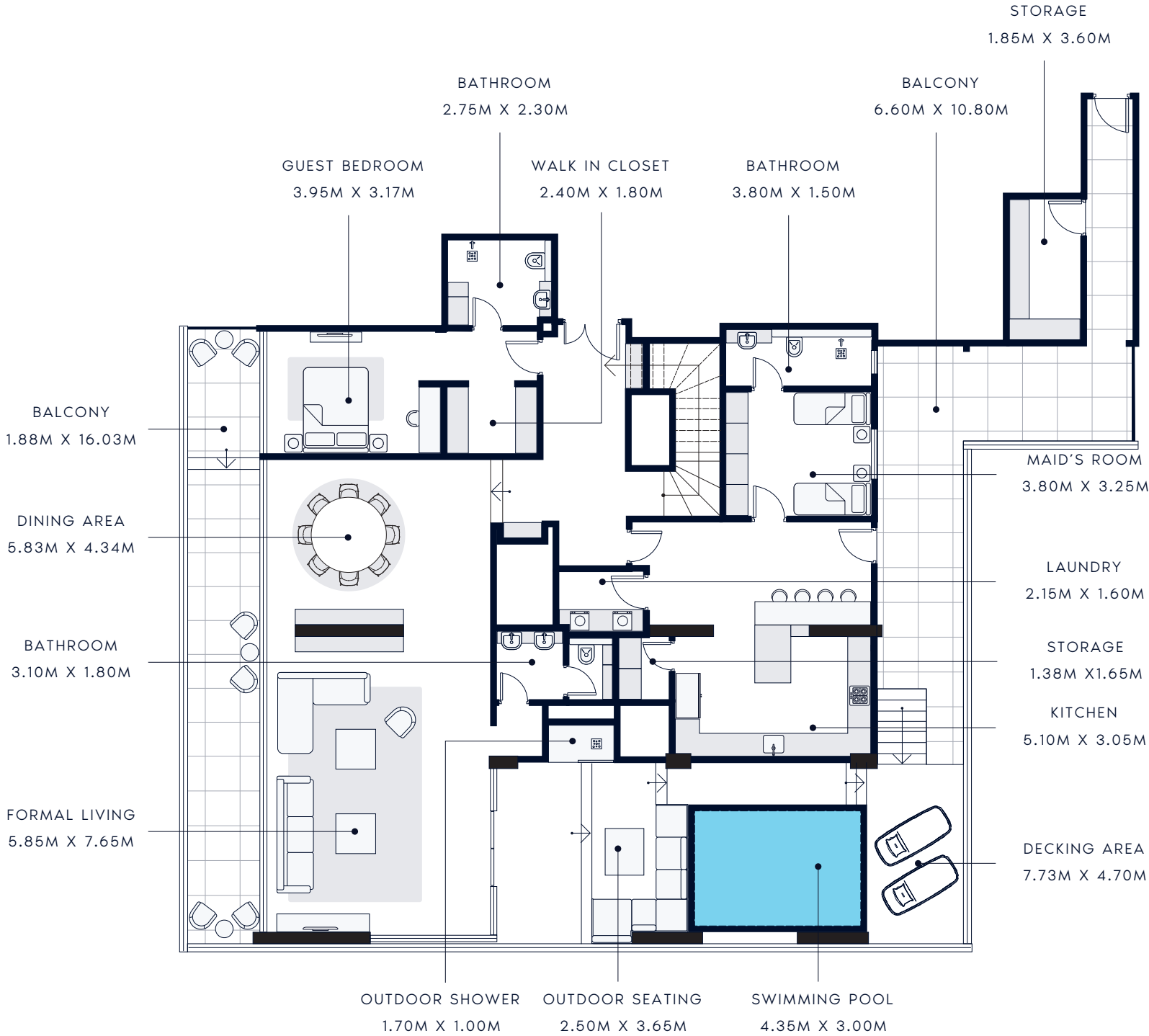
SUIT AREA: 3091.64 SQ.FT | TOTAL AREA: 4083.32 SQ.FT

TYPICAL UNITS



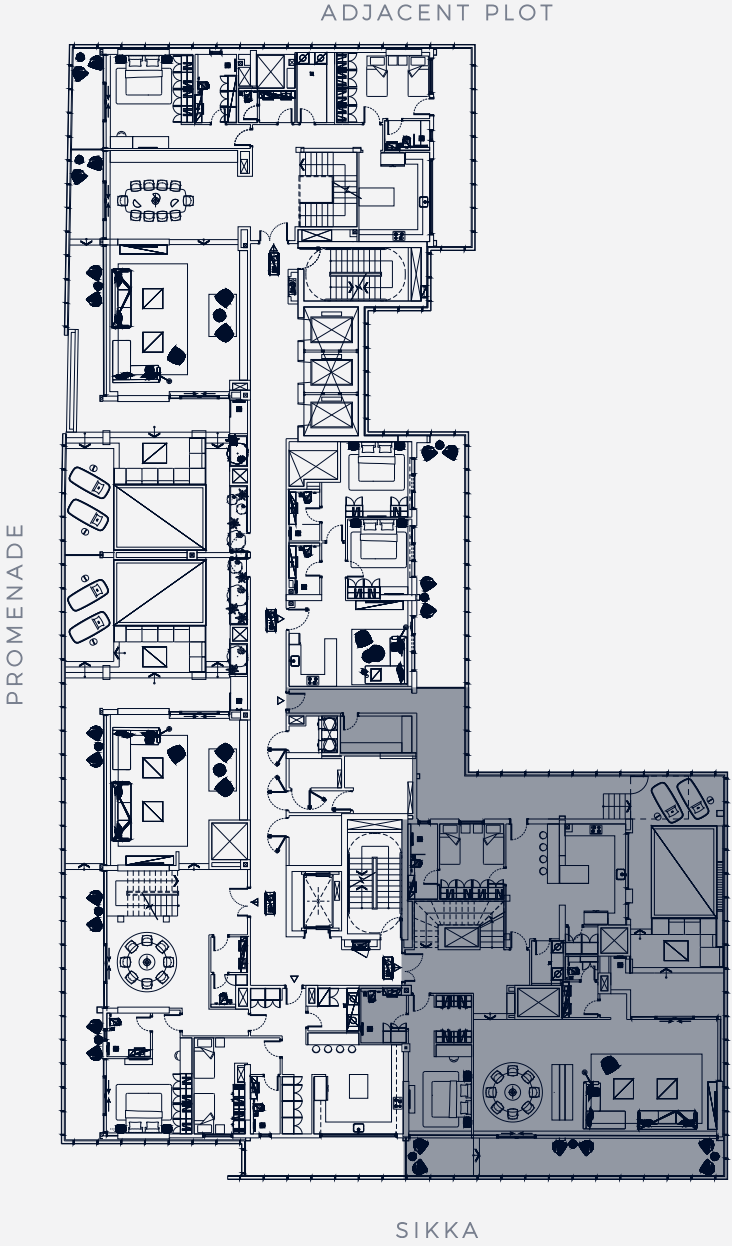
PENTHOUSE TYPE 3

8th Floor



SUIT AREA: 2593.59 SQ.FT | TOTAL AREA: 3302.07 SQ.FT

TYPICAL UNITS



FLOOR PLATE



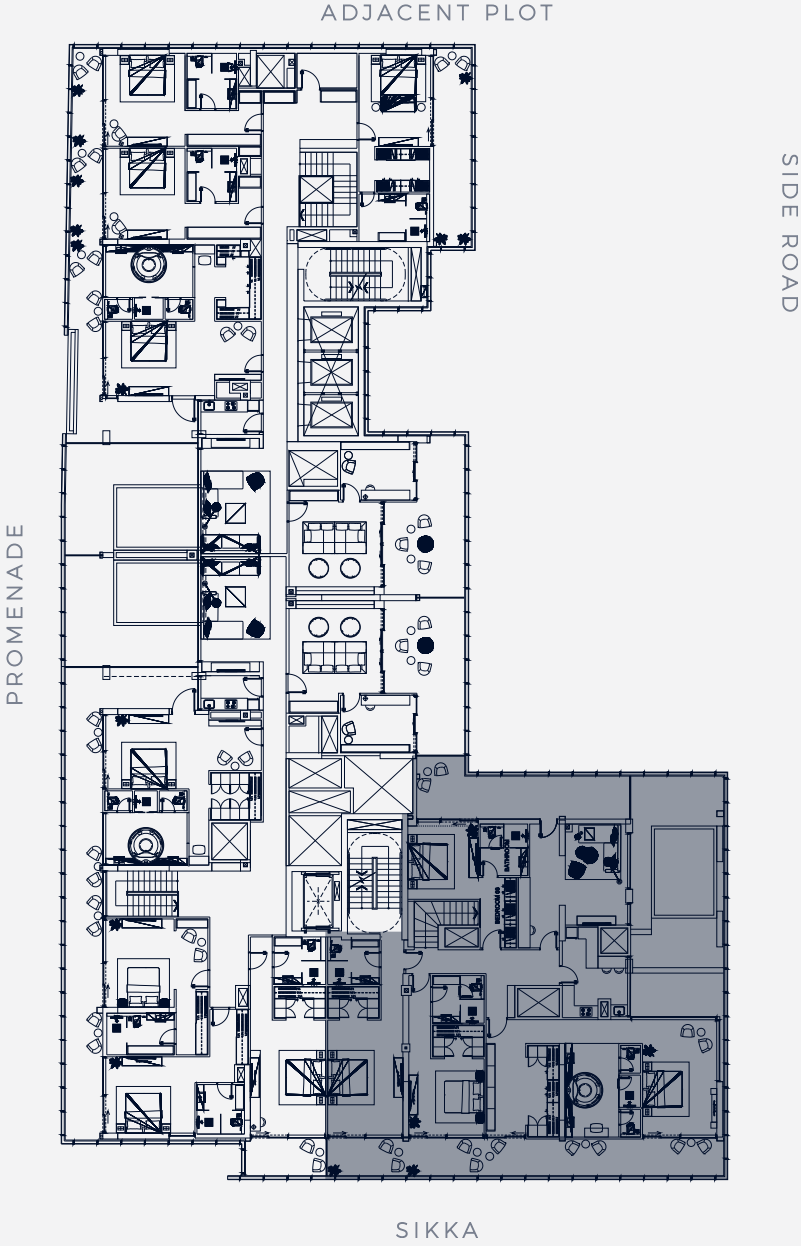
PENTHOUSE TYPE 3

9th Floor



SUIT AREA: 2593.59 SQ.FT | TOTAL AREA: 3302.07 SQ.FT

TYPICAL UNITS



FLOOR PLATE



Disclaimer

Please note this floor plan is for marketing purposes and is to be used for presentation and indicative purposes only and not contractual. The Developer reserves the right to make revisions to the floor plans at any time which may include but not limited to any features, materials, dimensions, drawings, layout, design features, views, areas, images and amenities without notice.