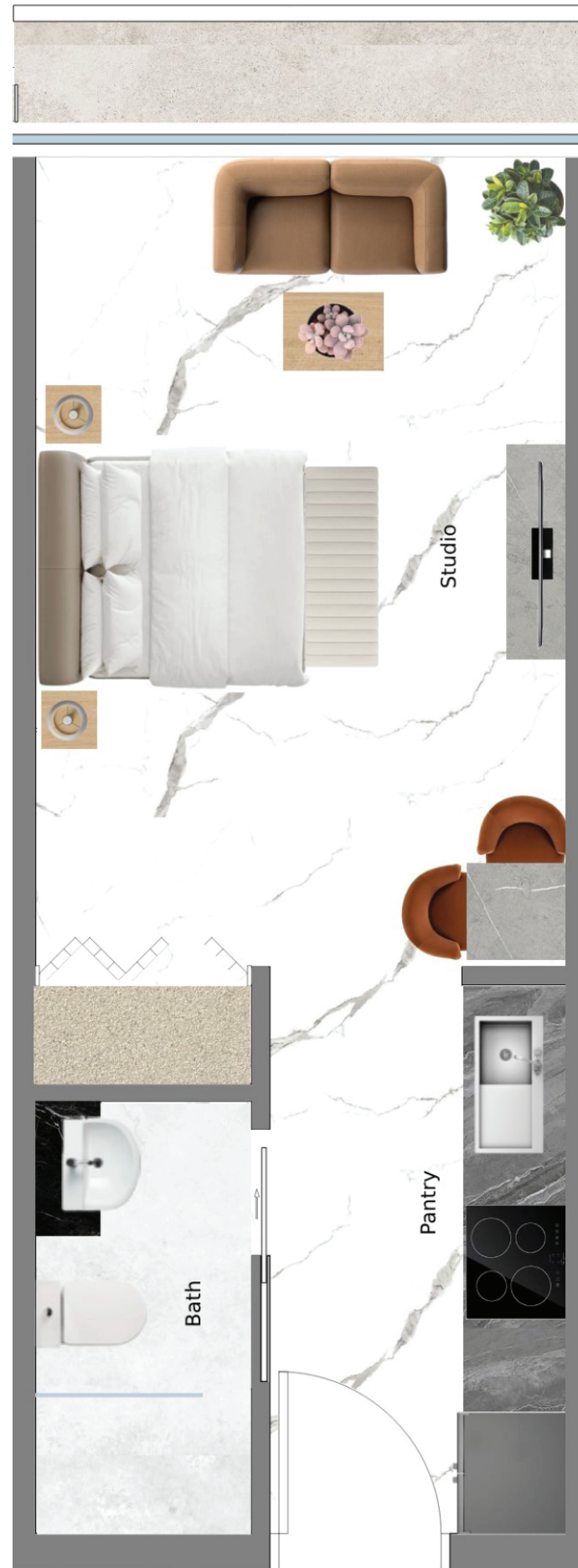




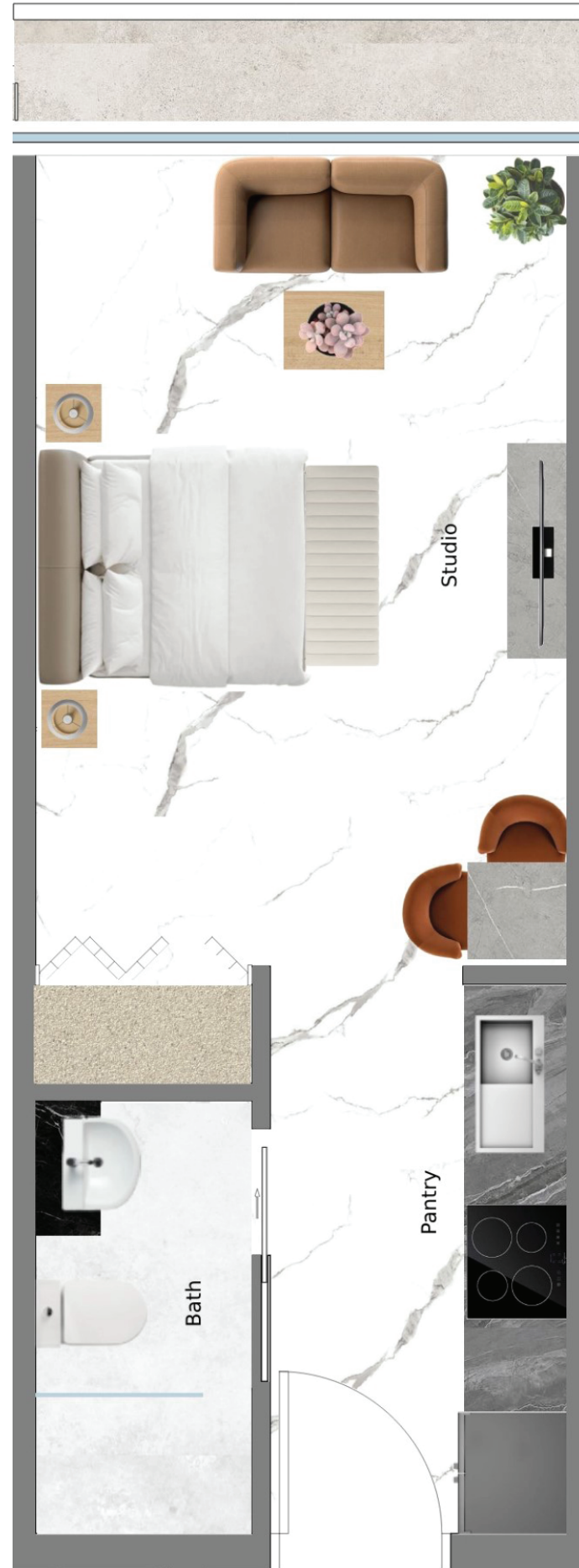
RIJAS SUITES

FLOOR PLANS



STUDIO TYPE - A

20	1	2	3	4	5	6	7
							8
19							9
							10
18	17	16	15	14	13	12	11



STUDIO TYPE - A

20	1	2	3	4	5	6	7
							8
19							9
							10
18	17	16	15	14	13	12	11

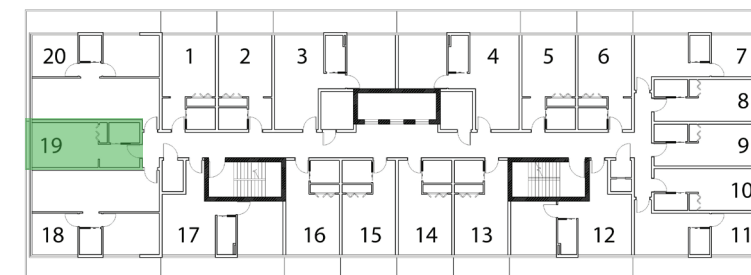


STUDIO TYPE - A

20	1	2	3	4	5	6	7
							8
19							9
							10
18	17	16	15	14	13	12	11

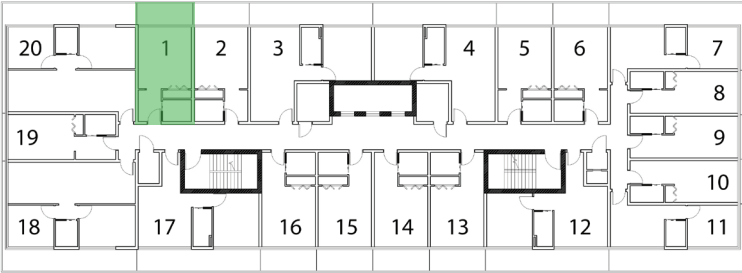


STUDIO TYPE - A





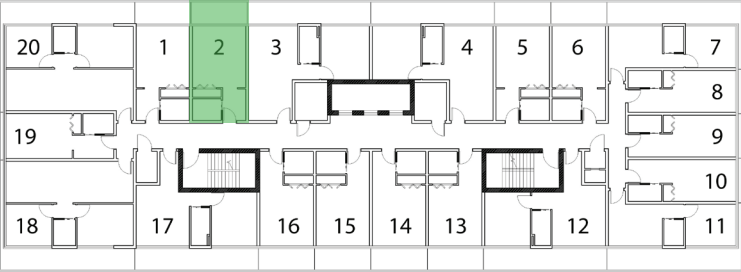
STUDIO TYPE - B



*All floor plans, drawings, and dimensions provided are for illustrative purposes only. They are approximate and subject to change without prior notice. Variations may occur during construction, and actual dimensions may differ slightly. For precise measurements and details, we recommend consulting with the developer or an authorized representative. No responsibility is assumed for discrepancy



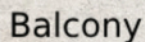
**STUDIO
TYPE - B**



*All floor plans, drawings, and dimensions provided are for illustrative purposes only. They are approximate and subject to change without prior notice. Variations may occur during construction, and actual dimensions may differ slightly. For precise measurements and details, we recommend consulting with the developer or an authorized representative. No responsibility is assumed for discrepancy



RIJAS SUITES

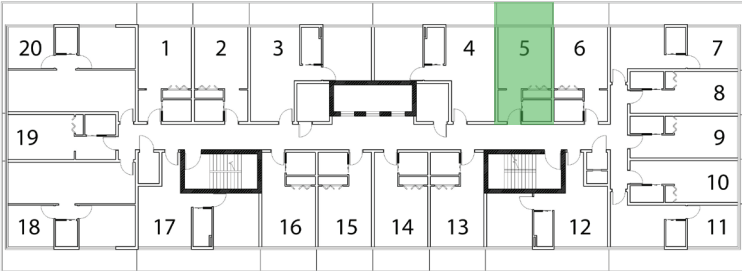


Studio

Pantry

Bath

STUDIO TYPE - B



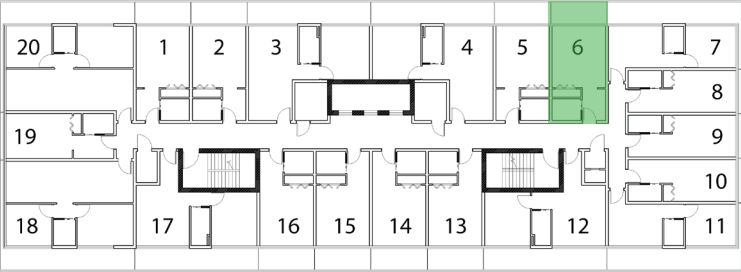
RIJAS

— DEVELOPMENT —

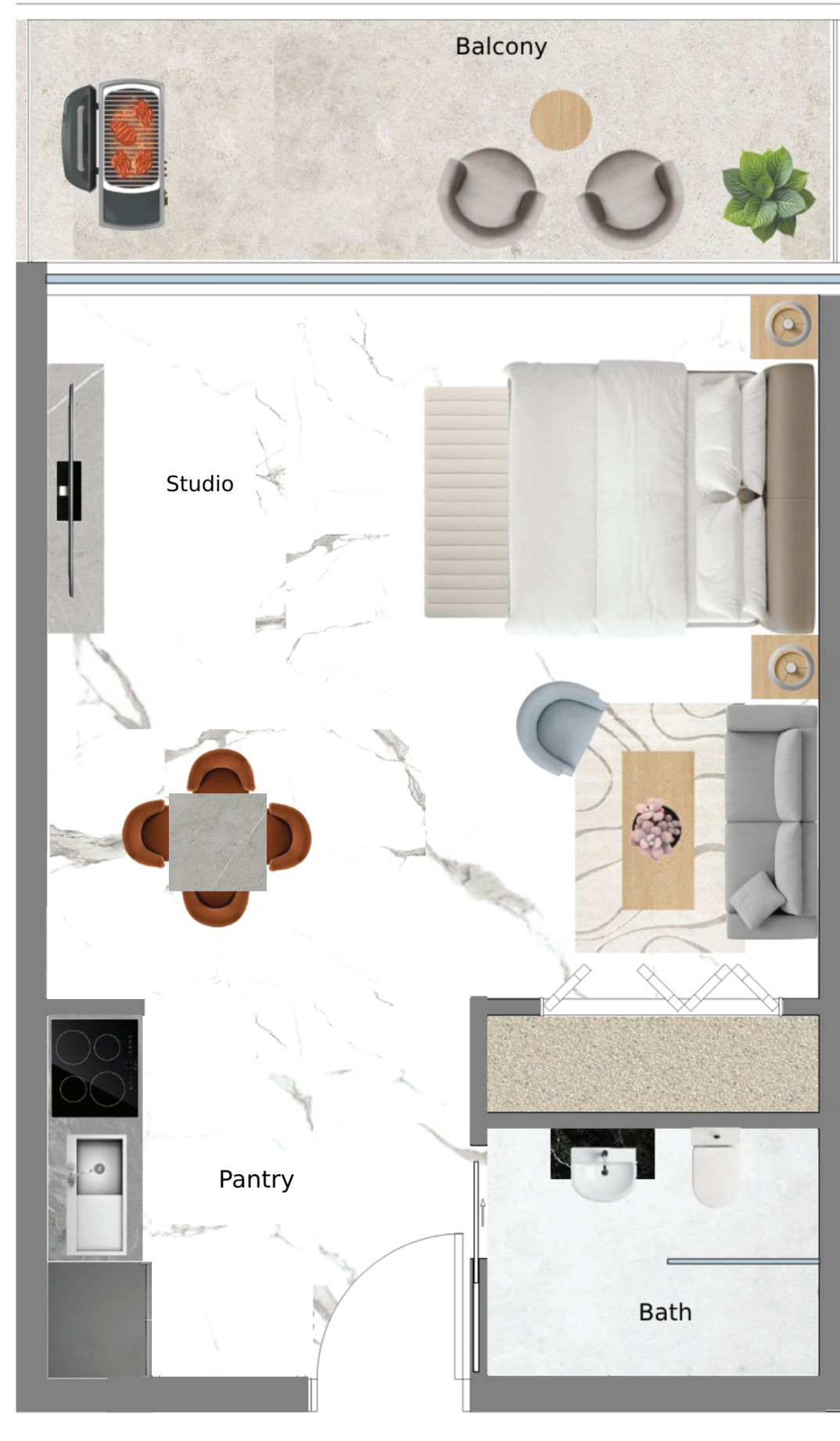
*All floor plans, drawings, and dimensions provided are for illustrative purposes only. They are approximate and subject to change without prior notice. Variations may occur during construction, and actual dimensions may differ slightly. For precise measurements and details, we recommend consulting with the developer or an authorized representative. No responsibility is assumed for discrepancies.



STUDIO TYPE - B

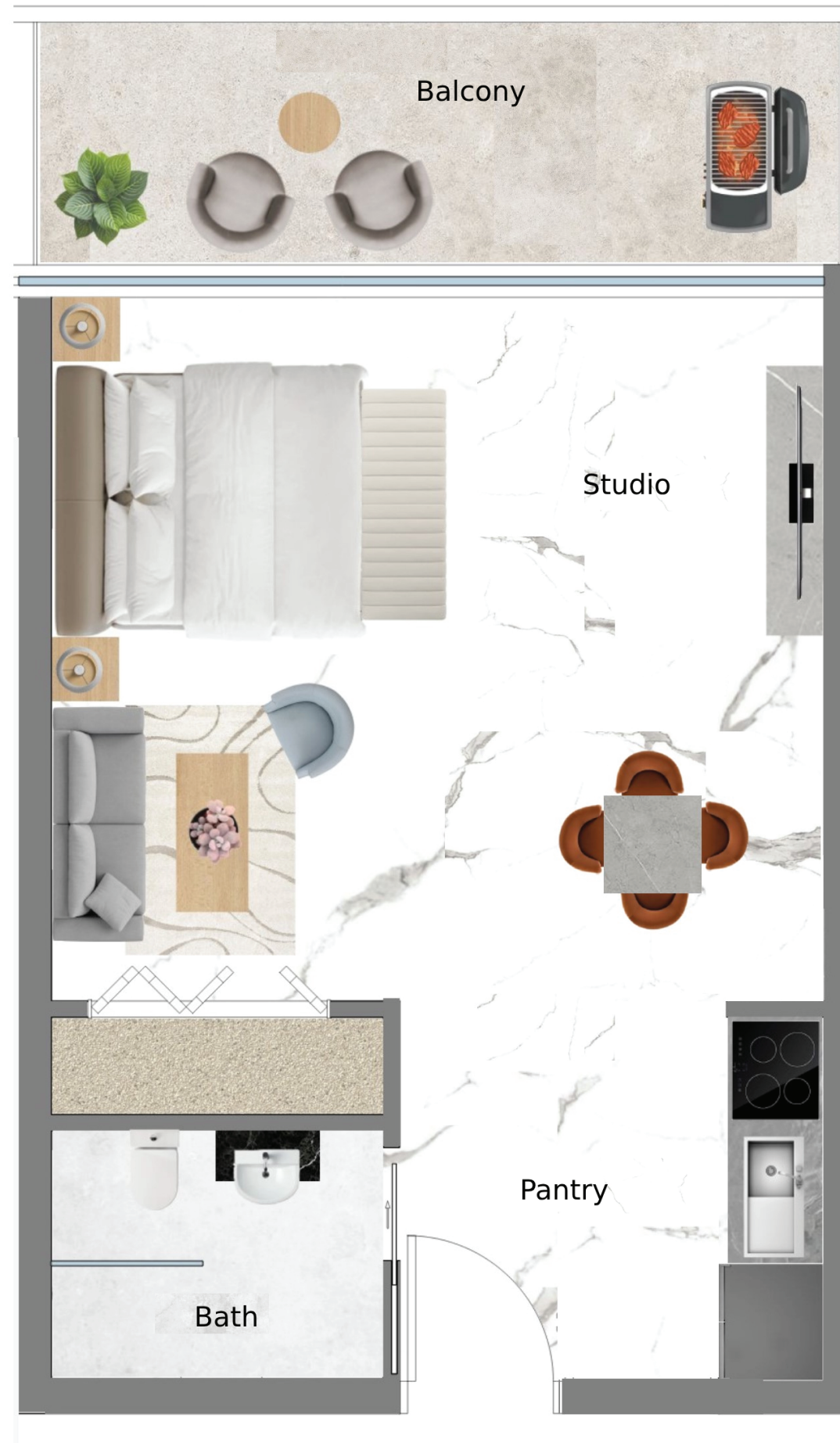


*All floor plans, drawings, and dimensions provided are for illustrative purposes only. They are approximate and subject to change without prior notice. Variations may occur during construction, and actual dimensions may differ slightly. For precise measurements and details, we recommend consulting with the developer or an authorized representative. No responsibility is assumed for discrepancy



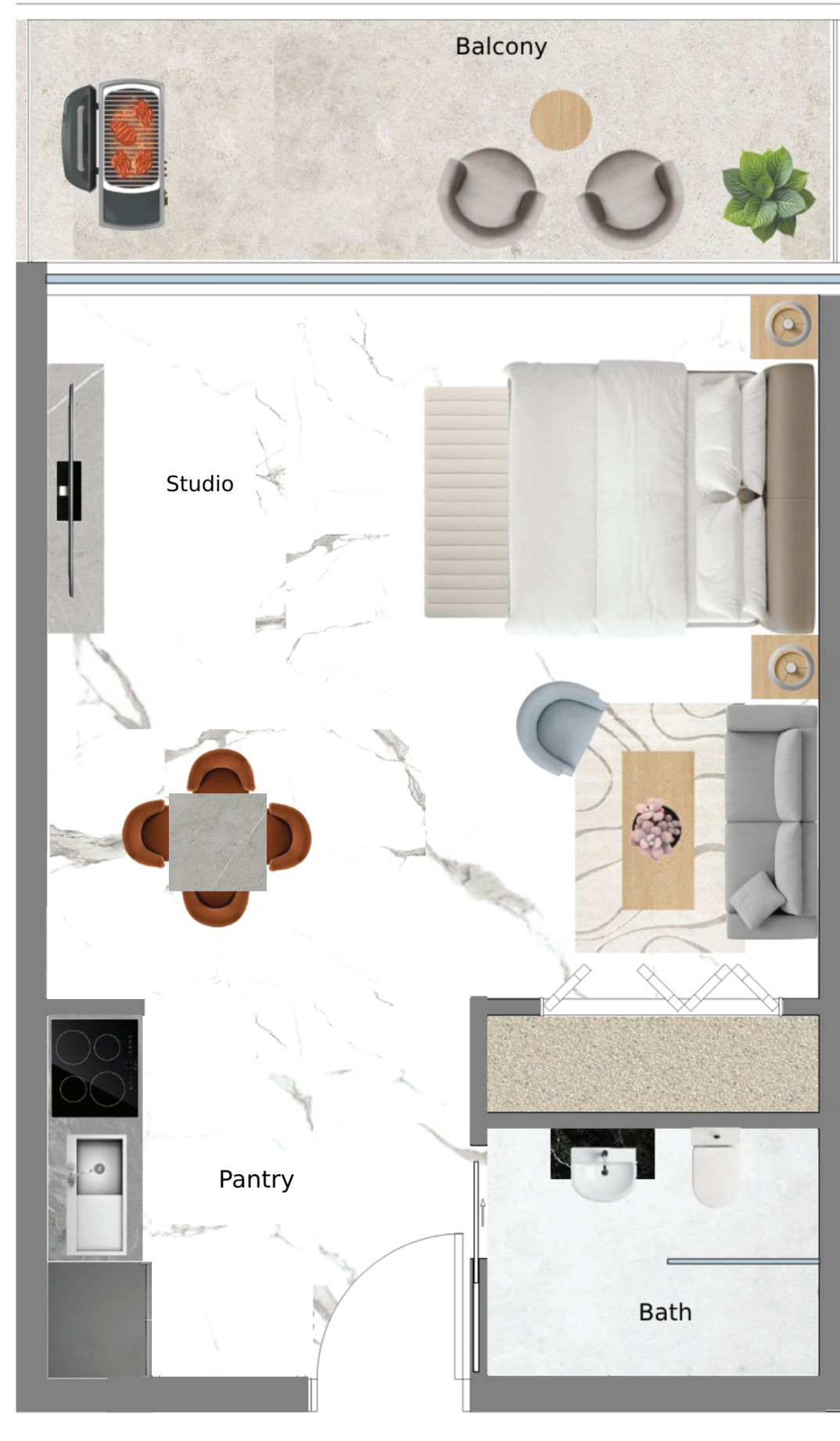
STUDIO TYPE - C

20	1	2	3	4	5	6	7
							8
19							9
							10
18	17	16	15	14	13	12	11



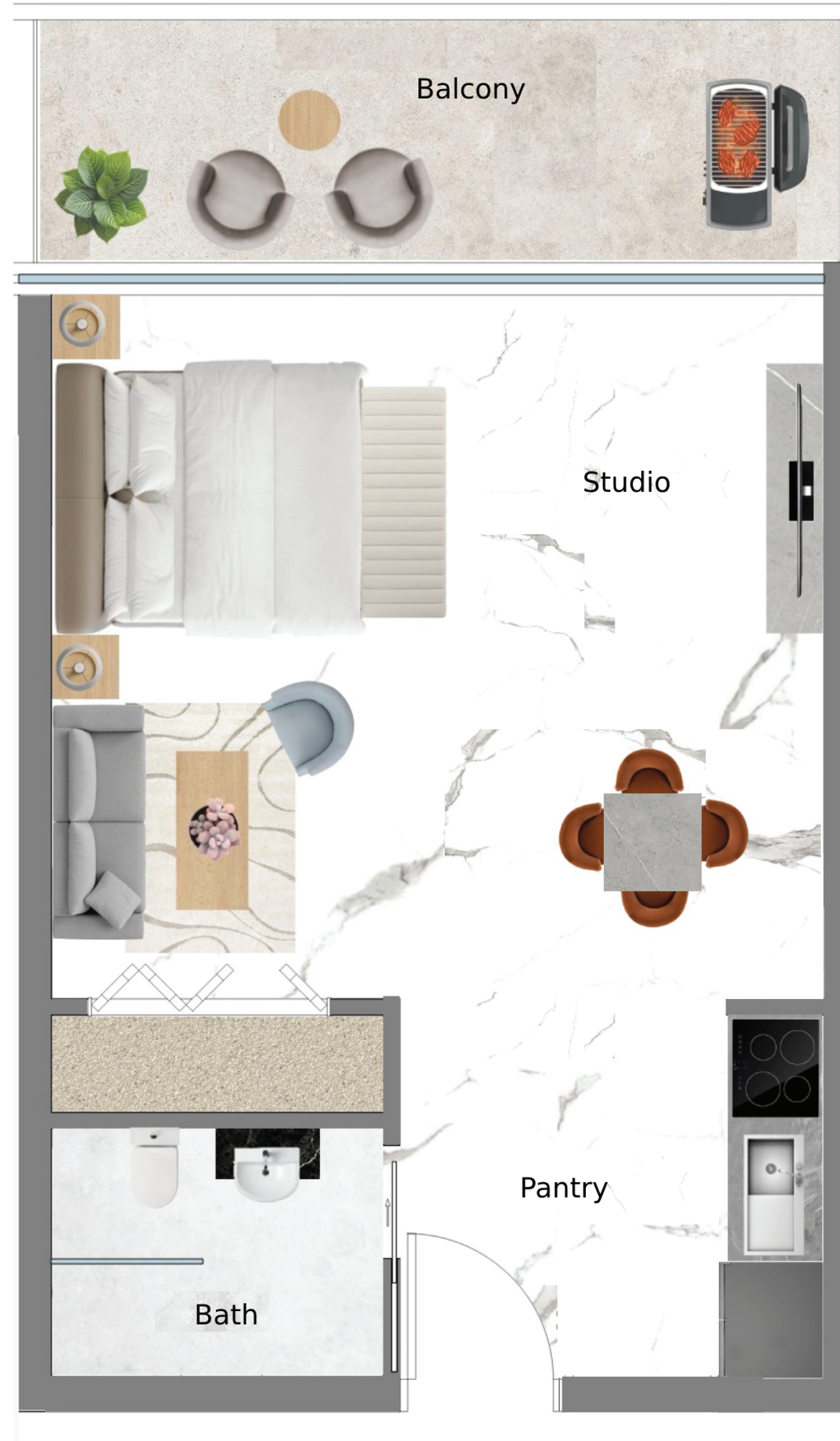
STUDIO TYPE - C





STUDIO TYPE - C

20	1	2	3	4	5	6	7
							8
19							9
							10
18	17	16	15	14	13	12	11



STUDIO TYPE - C

20	1	2	3	4	5	6	7
							8
19							9
							10
18	17	16	15	14	13	12	11



1 BEDROOM TYPE A

20	1	2	3	4	5	6	7
							8
19							9
							10
18	17	16	15	14	13	12	11

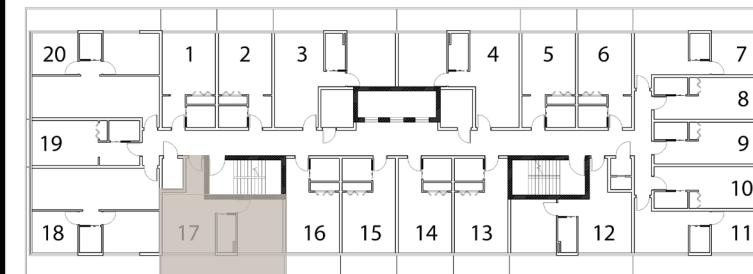


1 BEDROOM TYPE A

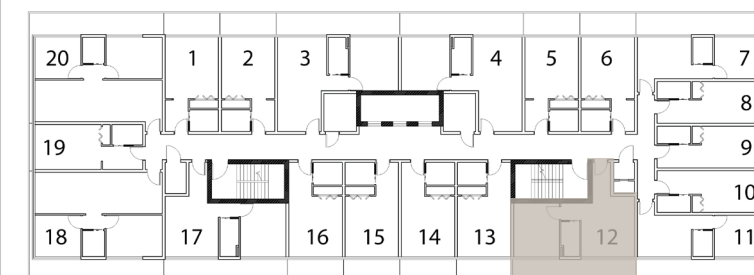
20	1	2	3	4	5	6	7
							8
19							9
							10
18	17	16	15	14	13	12	11



1 BEDROOM TYPE B



1 BEDROOM TYPE B



1 BEDROOM TYPE C

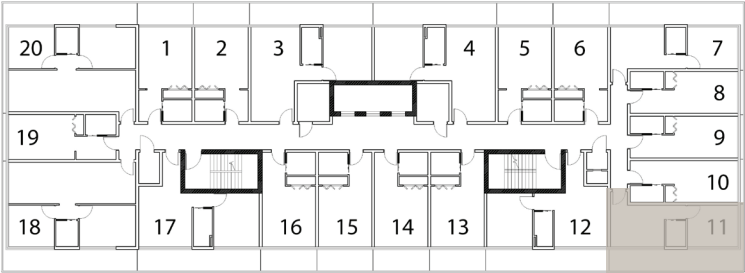


20	1	2	3	4	5	6	7
							8
19							9
							10
18	17	16	15	14	13	12	11



RIJAS SUITES

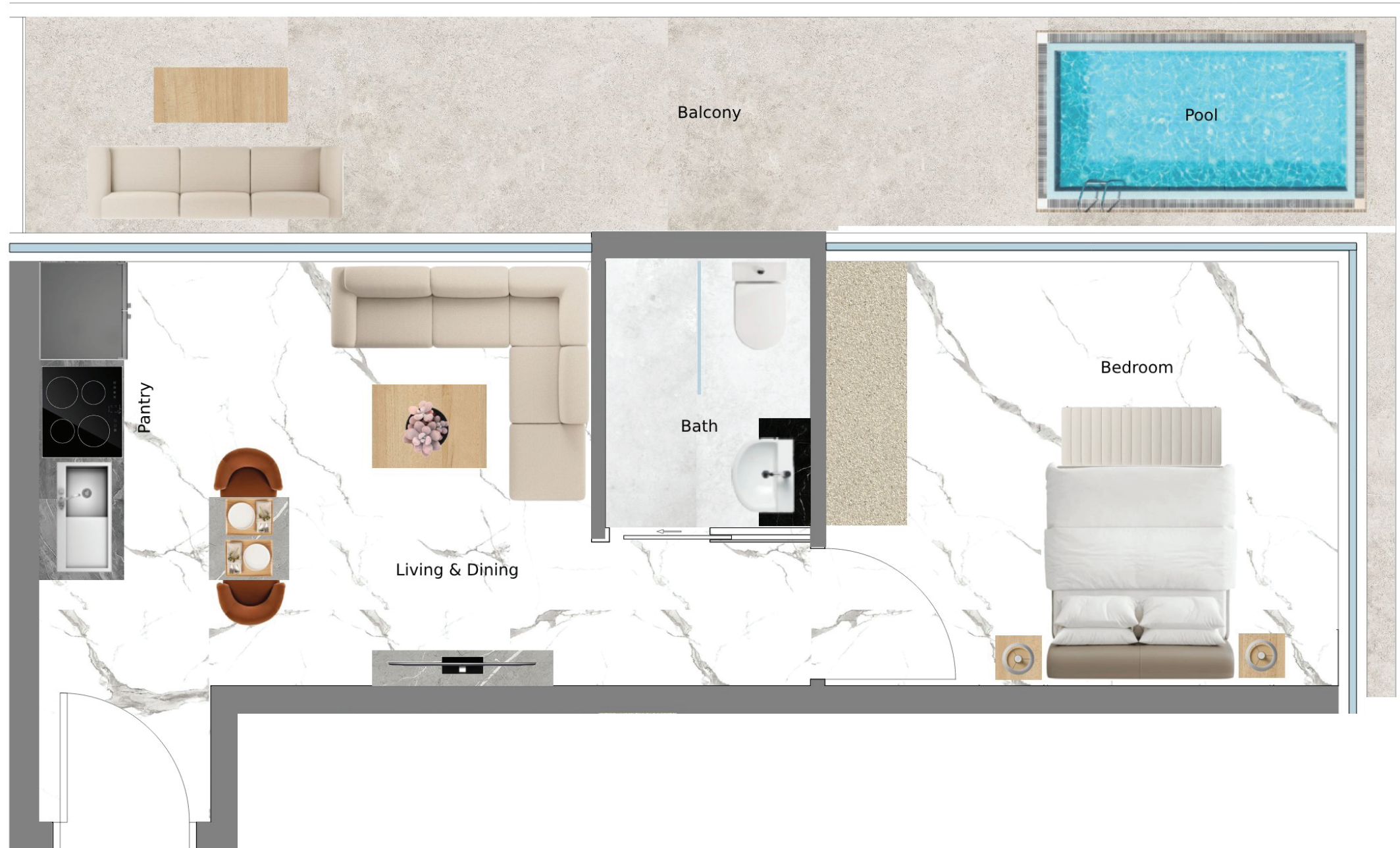
1 BEDROOM TYPE C



RIJAS
— DEVELOPMENT —

*All floor plans, drawings, and dimensions provided are for illustrative purposes only. They are approximate and subject to change without prior notice. Variations may occur during construction, and actual dimensions may differ slightly. For precise measurements and details, we recommend consulting with the developer or an authorized representative. No responsibility is assumed for discrepancy

Presidential Suite

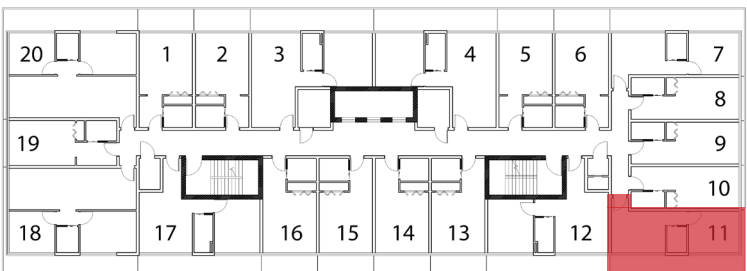


20	1	2	3	4	5	6	7
							8
19							9
							10
18	17	16	15	14	13	12	11



RIJAS SUITES

Presidential Suite



RIJAS
— DEVELOPMENT —

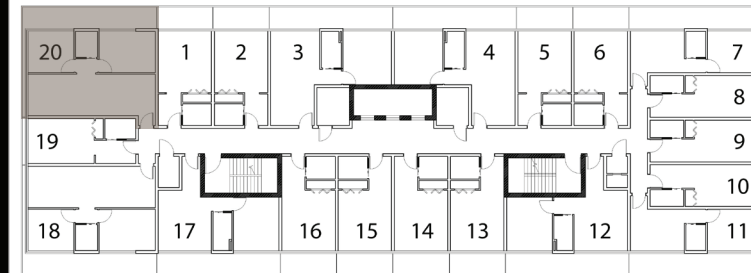
*All floor plans, drawings, and dimensions provided are for illustrative purposes only. They are approximate and subject to change without prior notice. Variations may occur during construction, and actual dimensions may differ slightly. For precise measurements and details, we recommend consulting with the developer or an authorized representative. No responsibility is assumed for discrepancy



RIJAS SUITES



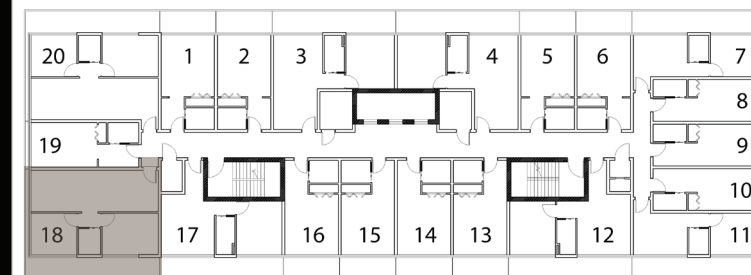
2 BEDROOMS



RIJAS
— DEVELOPMENT —



2 BEDROOMS





RIJAS SUITES