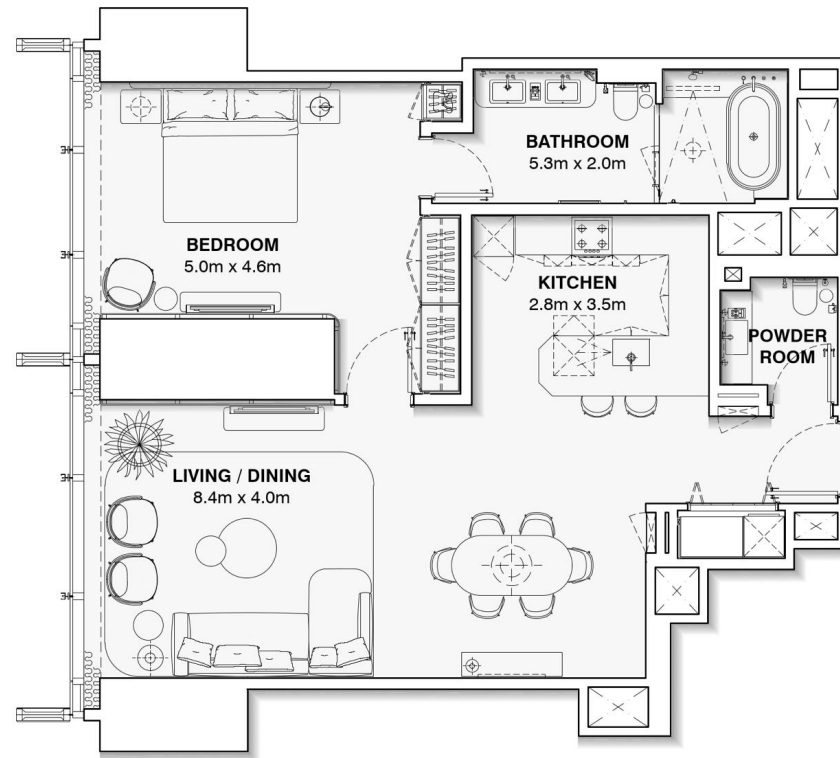


APARTMENT UNIT : 1401 – 5301

ONE BEDROOM

APARTMENT AREA : 98.7 m²

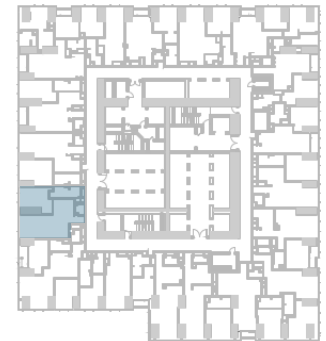
TOTAL AREA : 98.7 m²



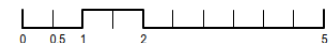
DISCLAIMER:

The marketing floor plans provided by the developer are for illustrative purposes only. Actual dimensions, layout, and finishes may vary from those depicted in the plans. Furniture shown in the plans are for decorative purposes only and are not included in the purchase of the property.

The developer reserves the right to make modifications, revisions, and changes to the floor plans, specifications and features without prior notice.



BURJ | AZIZI
DUBAI

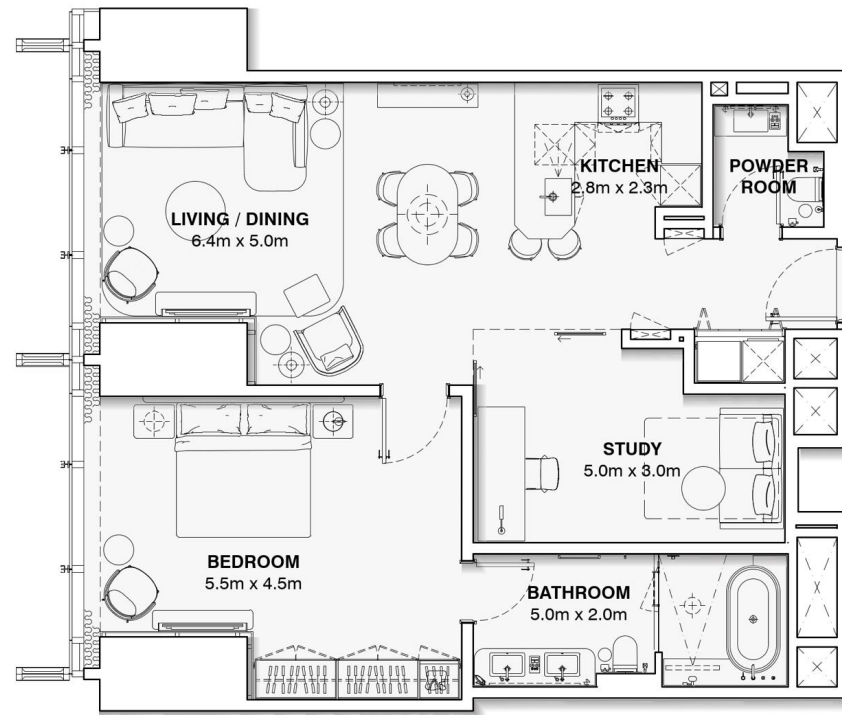


APARTMENT UNIT : 1402 – 5302

ONE BEDROOM + STUDY

APARTMENT AREA : 101.9 m²

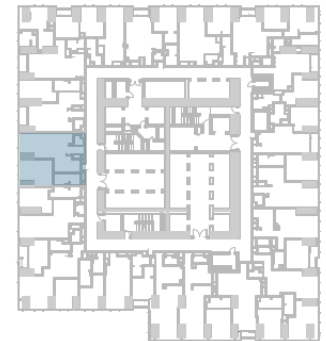
TOTAL AREA : 101.9 m²



DISCLAIMER:

The marketing floor plans provided by the developer are for illustrative purposes only. Actual dimensions, layout, and finishes may vary from those depicted in the plans. Furniture shown in the plans are for decorative purposes only and are not included in the purchase of the property.

The developer reserves the right to make modifications, revisions, and changes to the floor plans, specifications and features without prior notice.



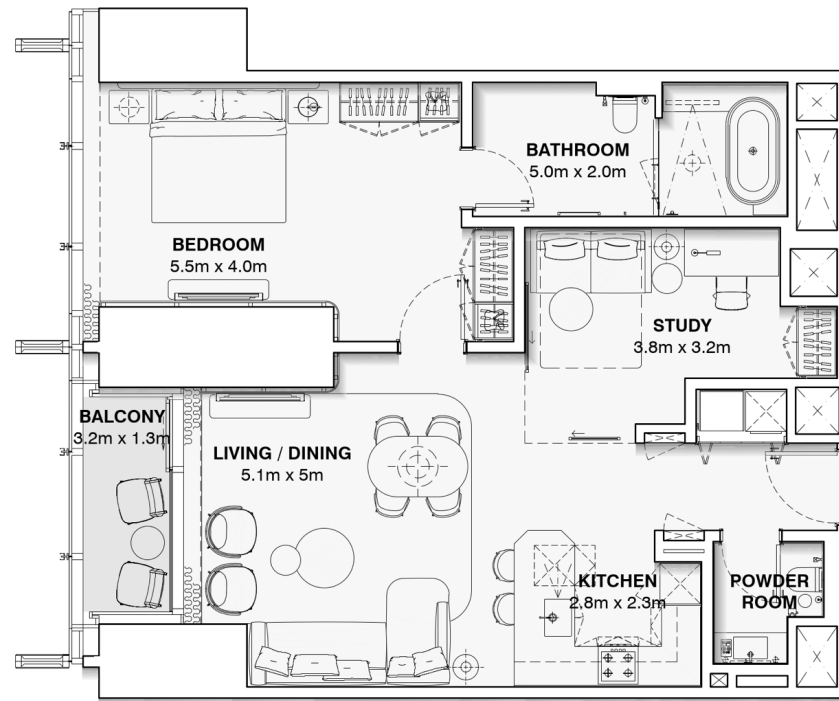
APARTMENT UNIT : 1403 – 5503

ONE BEDROOM + STUDY

APARTMENT AREA : 96.6 m²

BALCONY AREA : 5.0 m²

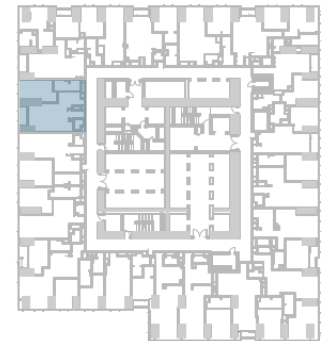
TOTAL AREA : 101.6 m²



DISCLAIMER:

The marketing floor plans provided by the developer are for illustrative purposes only. Actual dimensions, layout, and finishes may vary from those depicted in the plans. Furniture shown in the plans are for decorative purposes only and are not included in the purchase of the property.

The developer reserves the right to make modifications, revisions, and changes to the floor plans, specifications and features without prior notice.



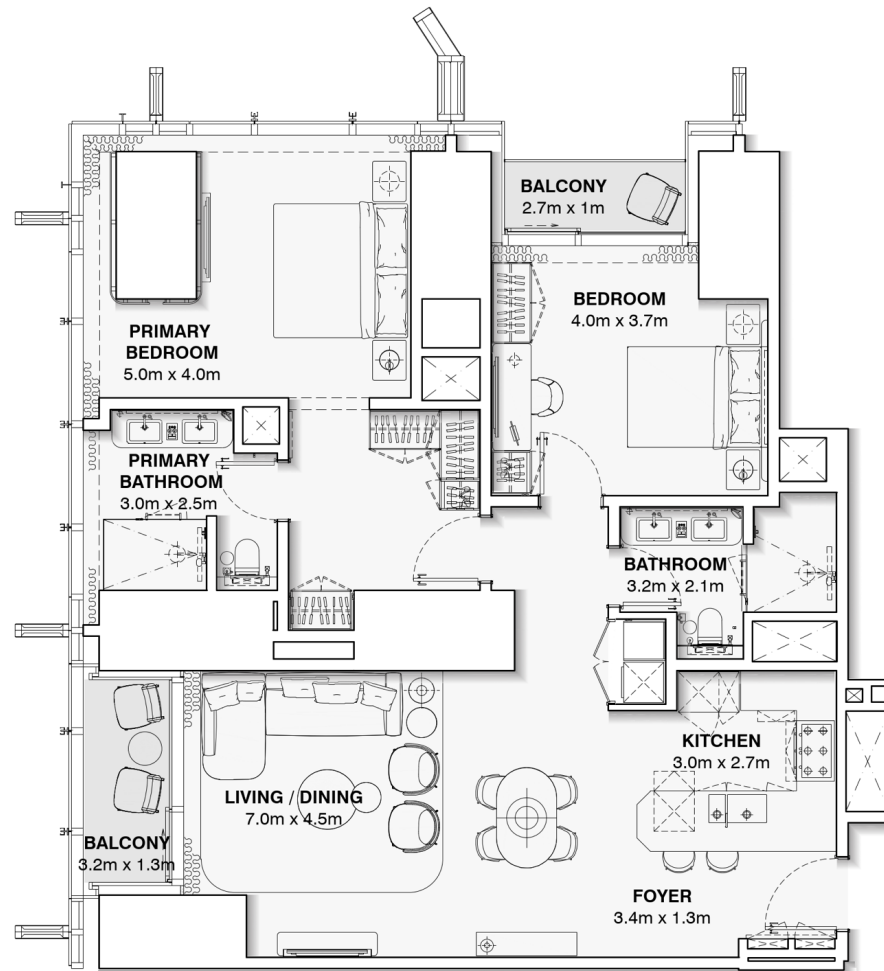
APARTMENT UNIT : 1404 – 5304

TWO BEDROOM

APARTMENT AREA : 124.8 m²

BALCONY AREA : 7.7 m²

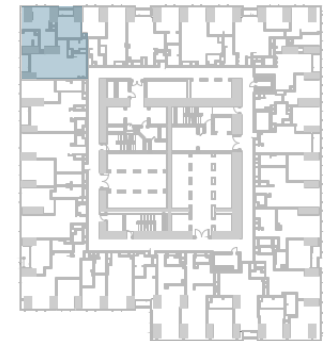
TOTAL AREA : 132.5 m²



DISCLAIMER:

The marketing floor plans provided by the developer are for illustrative purposes only. Actual dimensions, layout, and finishes may vary from those depicted in the plans. Furniture shown in the plans are for decorative purposes only and are not included in the purchase of the property.

The developer reserves the right to make modifications, revisions, and changes to the floor plans, specifications and features without prior notice.

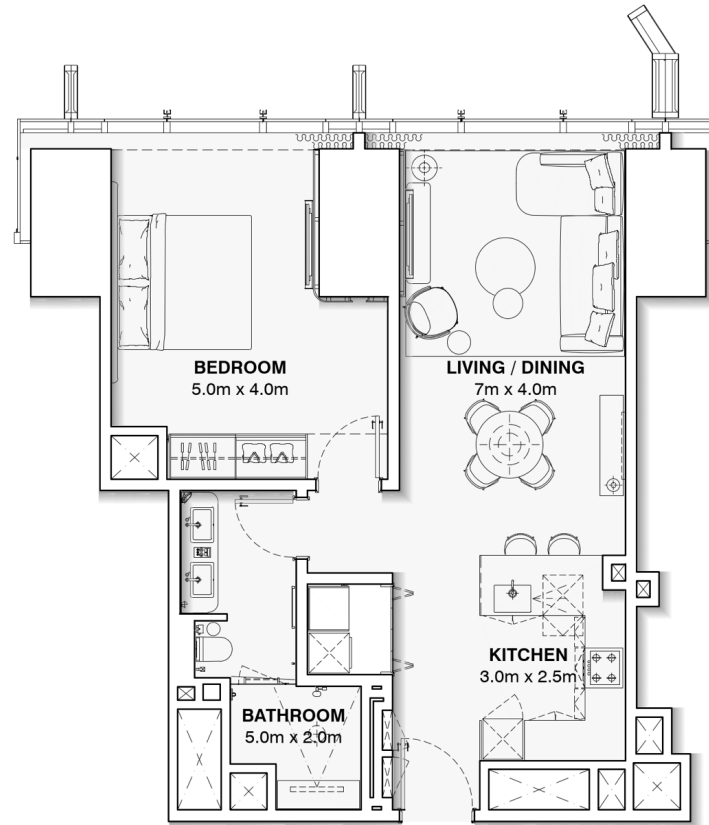


APARTMENT UNIT : 1405 – 5305

ONE BEDROOM

APARTMENT AREA : 74.4 m²

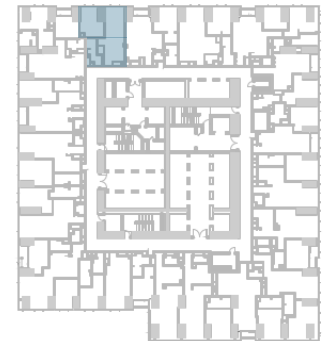
TOTAL AREA : 74.4 m²



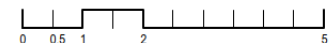
DISCLAIMER:

The marketing floor plans provided by the developer are for illustrative purposes only. Actual dimensions, layout, and finishes may vary from those depicted in the plans. Furniture shown in the plans are for decorative purposes only and are not included in the purchase of the property.

The developer reserves the right to make modifications, revisions, and changes to the floor plans, specifications and features without prior notice.



BURJ | AZIZI
DUBAI



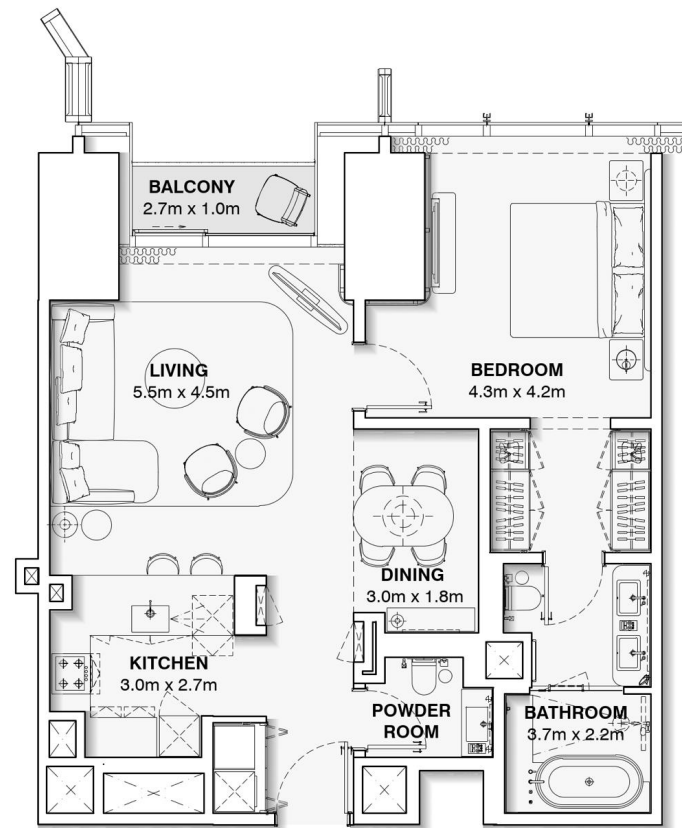
APARTMENT UNIT : 1406 – 5306

ONE BEDROOM

APARTMENT AREA : 85.6 m²

BALCONY AREA : 2.9 m²

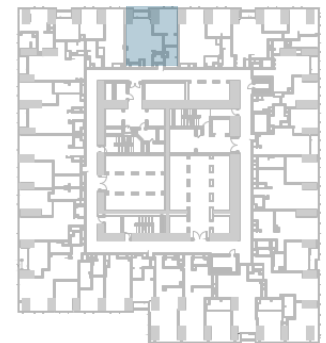
TOTAL AREA : 88.6 m²



DISCLAIMER:

The marketing floor plans provided by the developer are for illustrative purposes only. Actual dimensions, layout, and finishes may vary from those depicted in the plans. Furniture shown in the plans are for decorative purposes only and are not included in the purchase of the property.

The developer reserves the right to make modifications, revisions, and changes to the floor plans, specifications and features without prior notice.

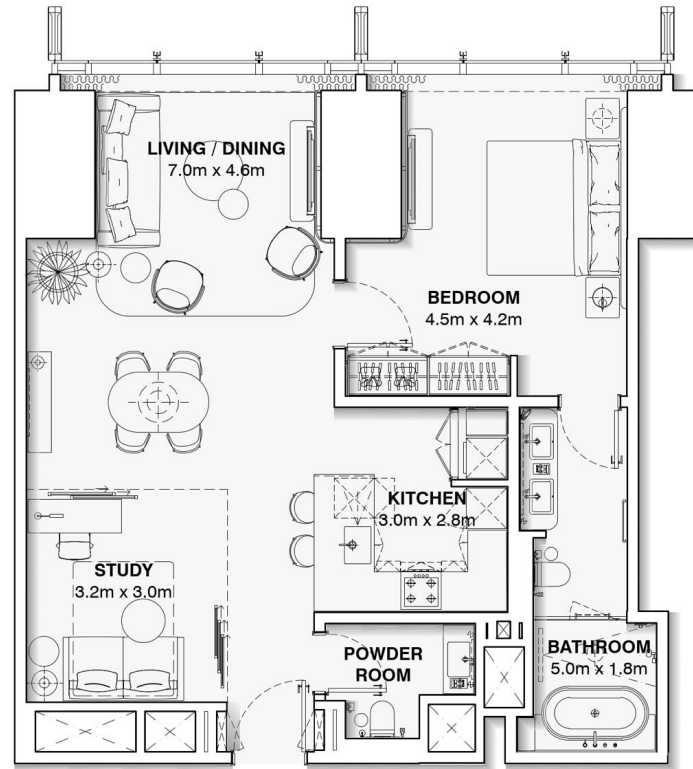


APARTMENT UNIT : 1407 – 5307

ONE BEDROOM + STUDY

APARTMENT AREA : 92.0 m²

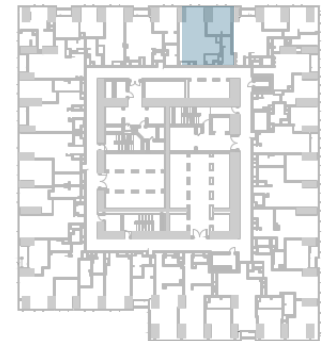
TOTAL AREA : 92.0 m²



DISCLAIMER:

The marketing floor plans provided by the developer are for illustrative purposes only. Actual dimensions, layout, and finishes may vary from those depicted in the plans. Furniture shown in the plans are for decorative purposes only and are not included in the purchase of the property.

The developer reserves the right to make modifications, revisions, and changes to the floor plans, specifications and features without prior notice.



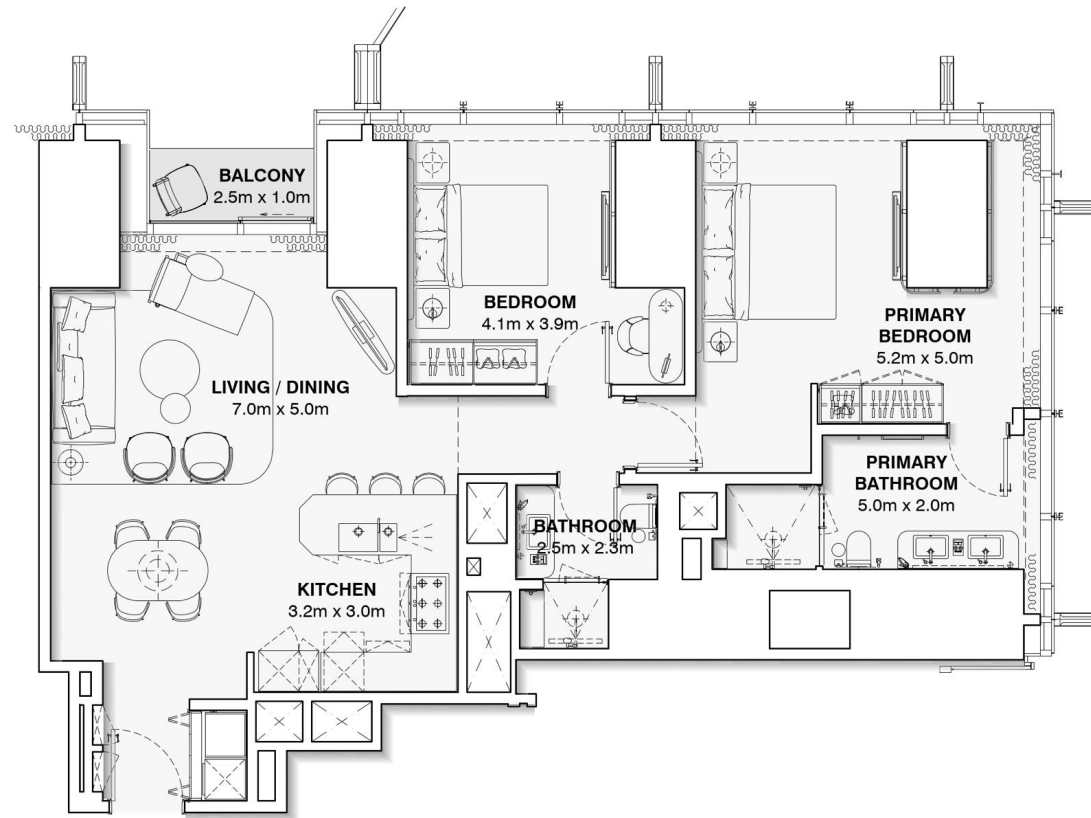
APARTMENT UNIT : 1408 – 5308

TWO BEDROOM

APARTMENT AREA : 119.0 m²

BALCONY AREA : 2.7 m²

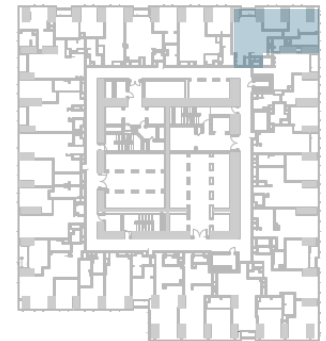
TOTAL AREA : 121.7 m²



DISCLAIMER:

The marketing floor plans provided by the developer are for illustrative purposes only. Actual dimensions, layout, and finishes may vary from those depicted in the plans. Furniture shown in the plans are for decorative purposes only and are not included in the purchase of the property.

The developer reserves the right to make modifications, revisions, and changes to the floor plans, specifications and features without prior notice.



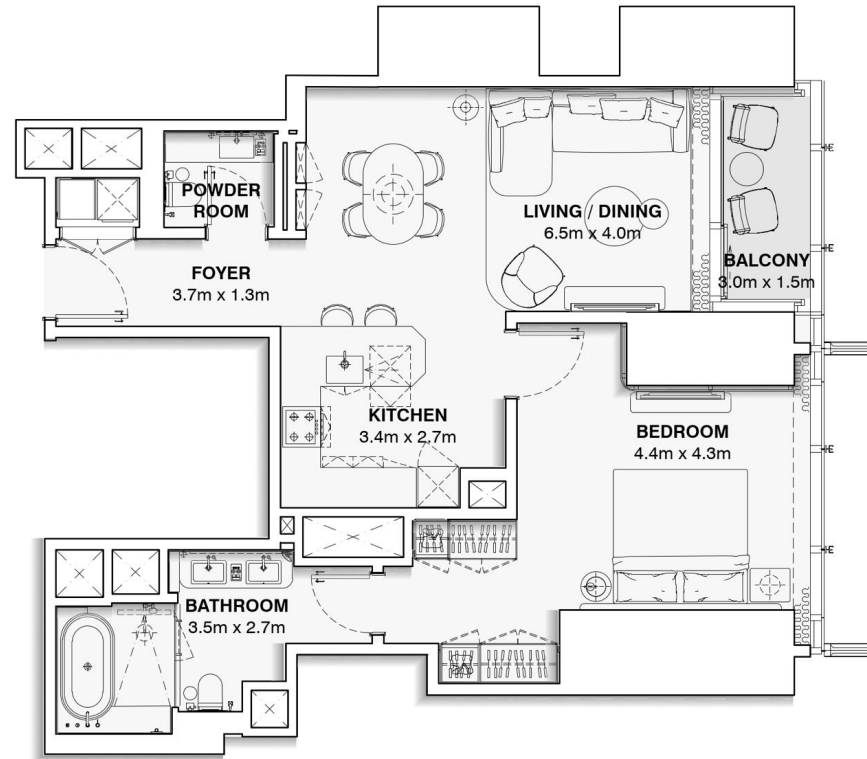
APARTMENT UNIT : 1409 – 5309

ONE BEDROOM

APARTMENT AREA : 84.8 m²

BALCONY AREA : 4.7m²

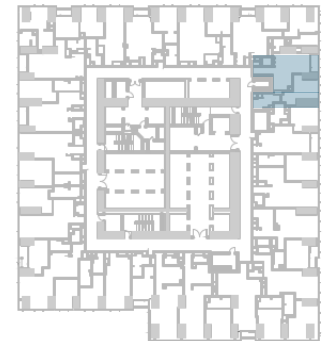
TOTAL AREA : 89.6 m²



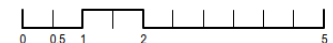
DISCLAIMER:

The marketing floor plans provided by the developer are for illustrative purposes only. Actual dimensions, layout, and finishes may vary from those depicted in the plans. Furniture shown in the plans are for decorative purposes only and are not included in the purchase of the property.

The developer reserves the right to make modifications, revisions, and changes to the floor plans, specifications and features without prior notice.



BURJ | AZIZI
DUBAI



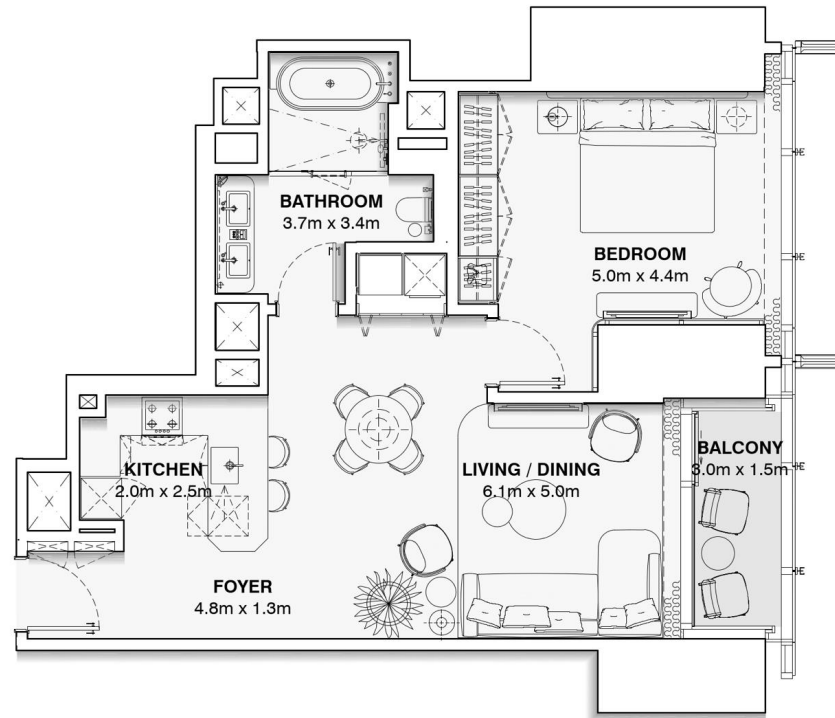
APARTMENT UNIT : 1410 – 5310

ONE BEDROOM

APARTMENT AREA : 79.3 m²

BALCONY AREA : 5.0 m²

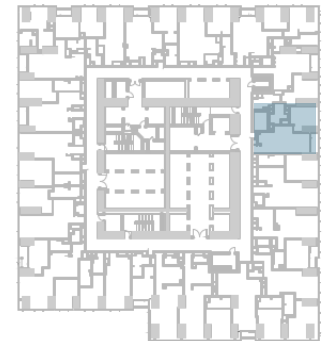
TOTAL AREA : 84.3 m²



DISCLAIMER:

The marketing floor plans provided by the developer are for illustrative purposes only. Actual dimensions, layout, and finishes may vary from those depicted in the plans. Furniture shown in the plans are for decorative purposes only and are not included in the purchase of the property.

The developer reserves the right to make modifications, revisions, and changes to the floor plans, specifications and features without prior notice.

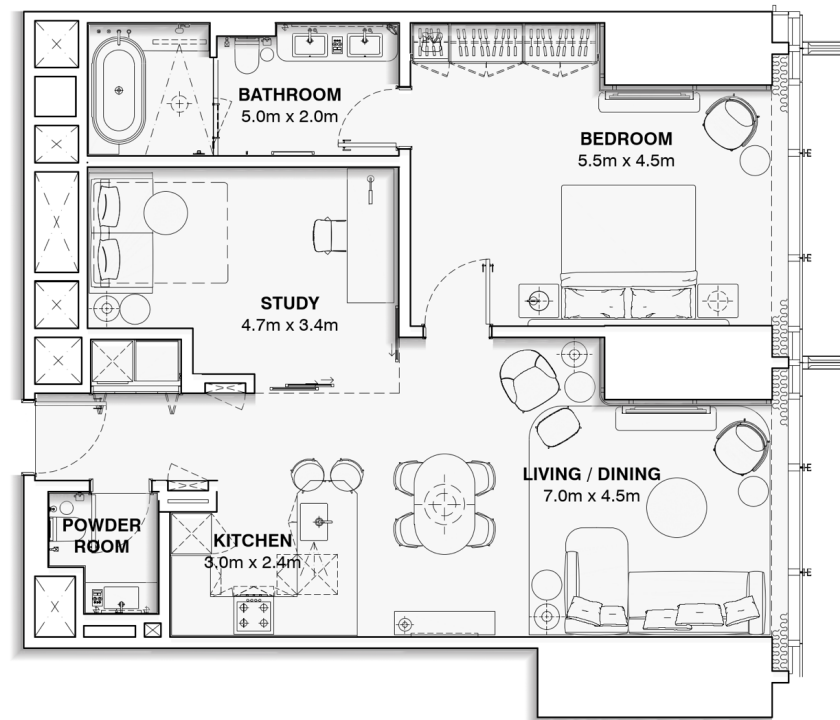


APARTMENT UNIT : 1411 – 5311

ONE BEDROOM + STUDY

APARTMENT AREA : 102.7 m²

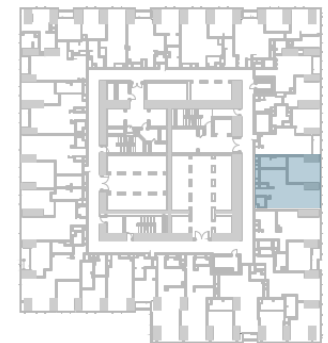
TOTAL AREA : 102.7 m²



DISCLAIMER:

The marketing floor plans provided by the developer are for illustrative purposes only. Actual dimensions, layout, and finishes may vary from those depicted in the plans. Furniture shown in the plans are for decorative purposes only and are not included in the purchase of the property.

The developer reserves the right to make modifications, revisions, and changes to the floor plans, specifications and features without prior notice.



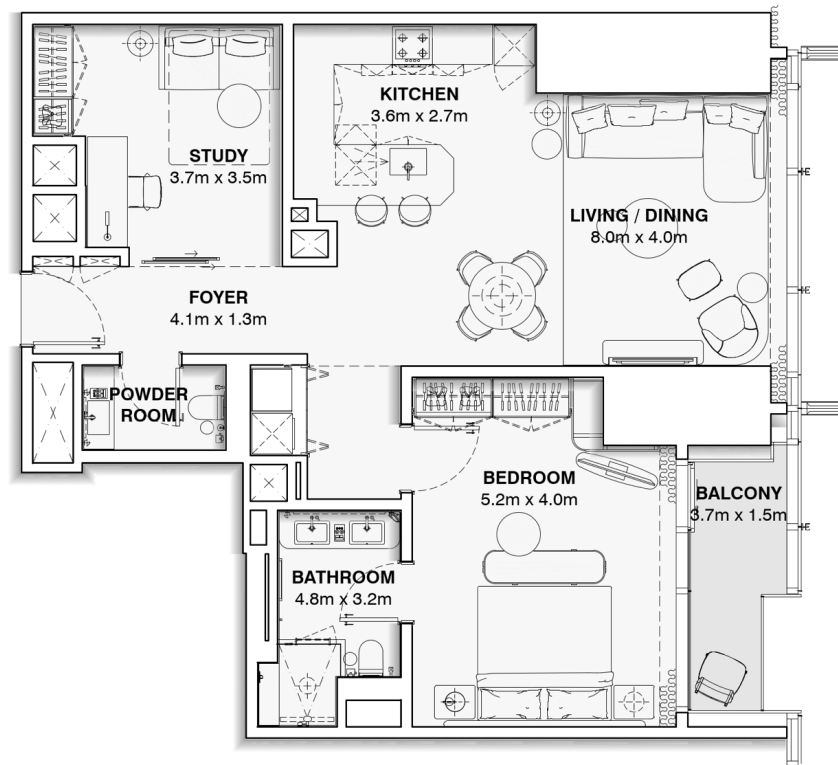
APARTMENT UNIT : 1412 – 5312

ONE BEDROOM + STUDY

APARTMENT AREA : 97.7 m²

BALCONY : 5.3 m²

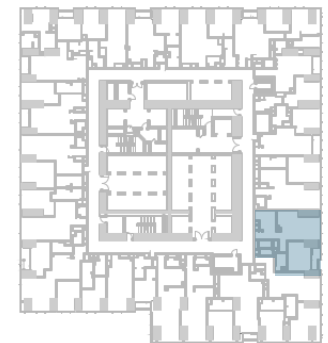
TOTAL AREA : 103.0 m²



DISCLAIMER:

The marketing floor plans provided by the developer are for illustrative purposes only. Actual dimensions, layout, and finishes may vary from those depicted in the plans. Furniture shown in the plans are for decorative purposes only and are not included in the purchase of the property.

The developer reserves the right to make modifications, revisions, and changes to the floor plans, specifications and features without prior notice.

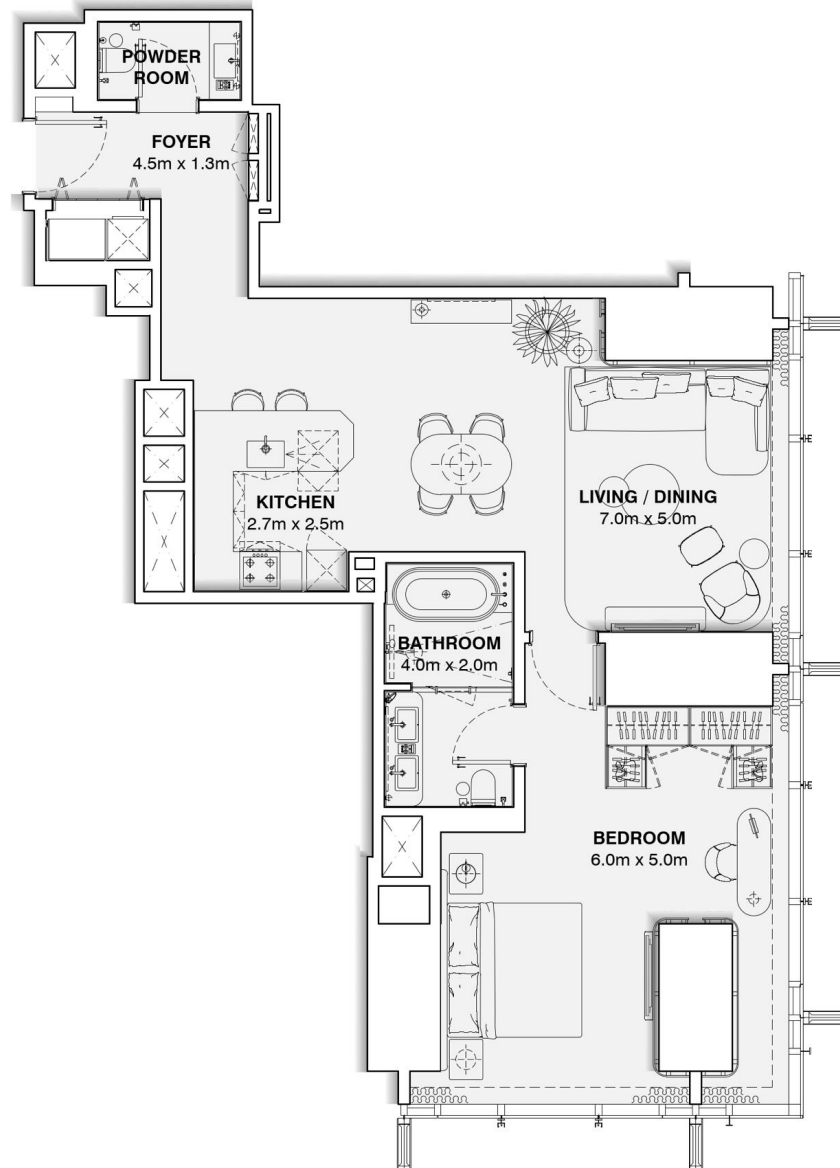


APARTMENT UNIT : 1413 – 5313

ONE BEDROOM

APARTMENT AREA : 99.5 m²

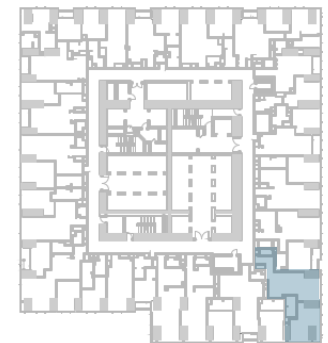
TOTAL AREA : 99.5 m²



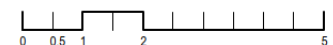
DISCLAIMER:

The marketing floor plans provided by the developer are for illustrative purposes only. Actual dimensions, layout, and finishes may vary from those depicted in the plans. Furniture shown in the plans are for decorative purposes only and are not included in the purchase of the property.

The developer reserves the right to make modifications, revisions, and changes to the floor plans, specifications and features without prior notice.



BURJ | AZIZI
DUBAI



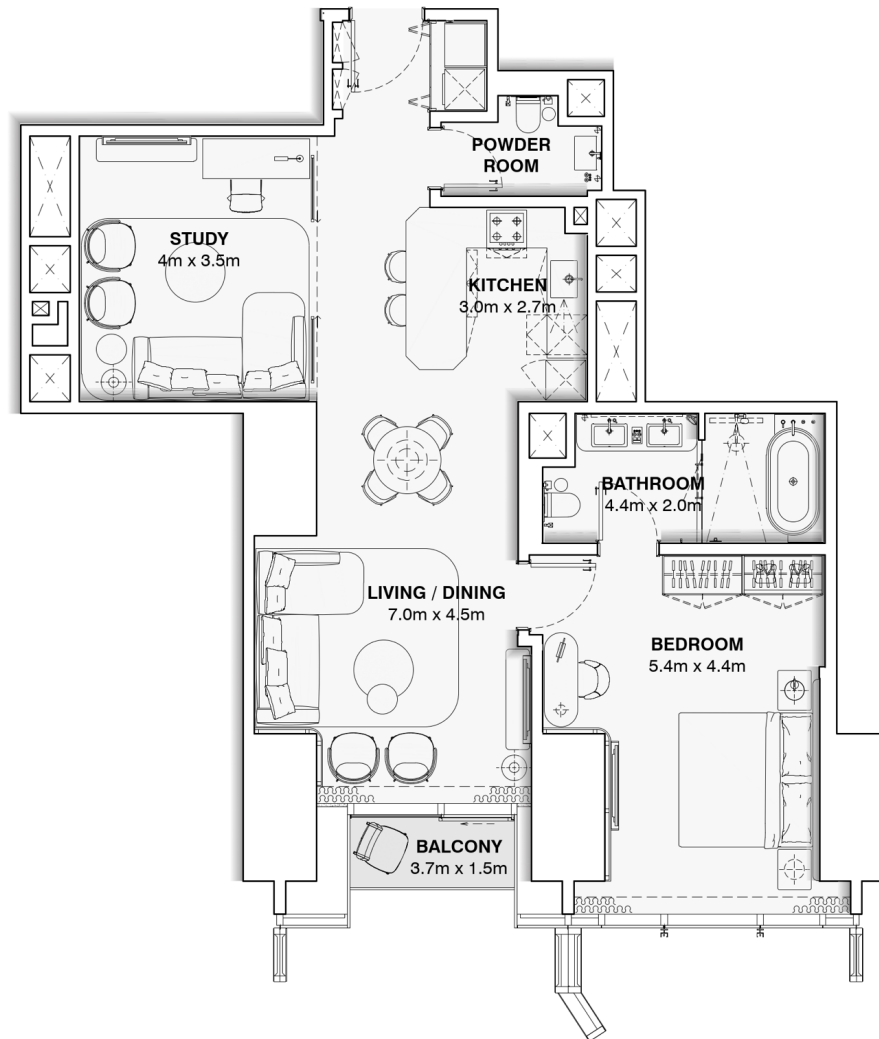
APARTMENT UNIT : 1414 – 5314

ONE BEDROOM + STUDY

APARTMENT AREA : 98.8 m²

BALCONY AREA : 5.3 m²

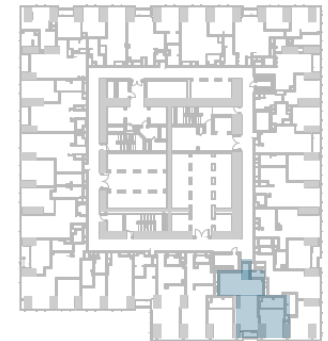
TOTAL AREA : 101.5 m²



DISCLAIMER:

The marketing floor plans provided by the developer are for illustrative purposes only. Actual dimensions, layout, and finishes may vary from those depicted in the plans. Furniture shown in the plans are for decorative purposes only and are not included in the purchase of the property.

The developer reserves the right to make modifications, revisions, and changes to the floor plans, specifications and features without prior notice.

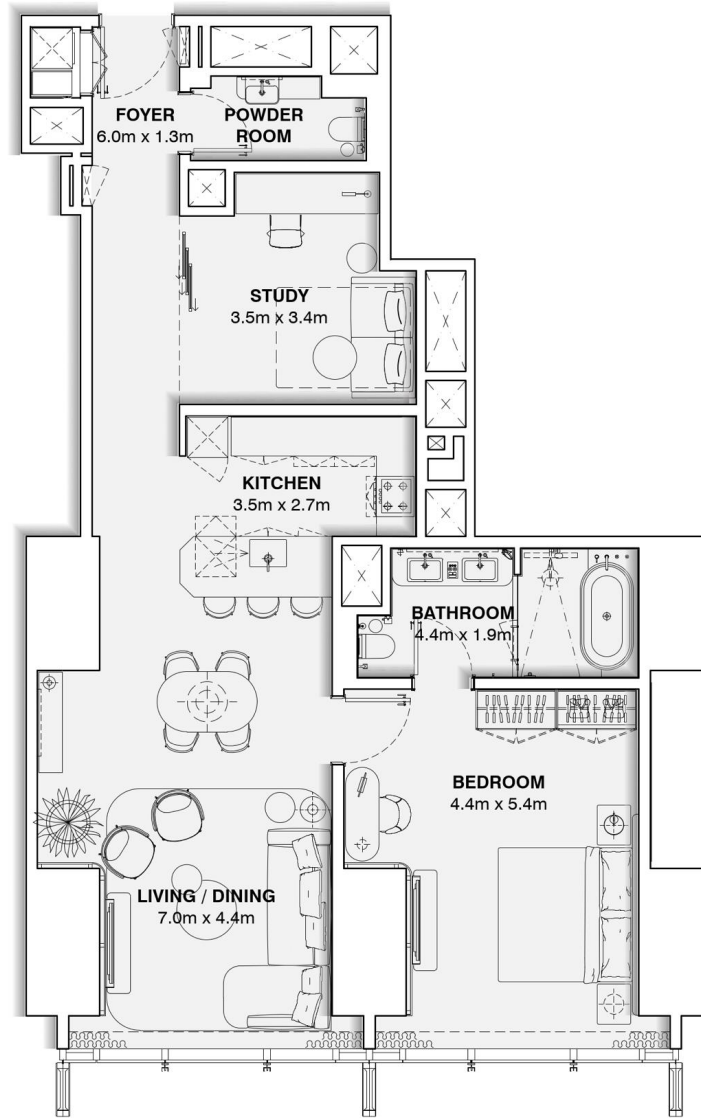


APARTMENT UNIT : 1415 – 5315

ONE BEDROOM + STUDY

APARTMENT AREA : 105.7 m²

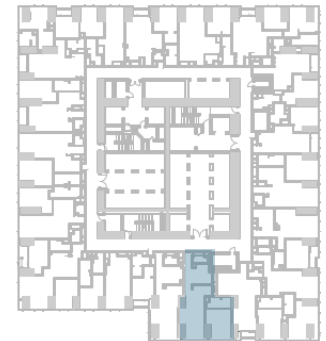
TOTAL AREA : 105.7 m²



DISCLAIMER:

The marketing floor plans provided by the developer are for illustrative purposes only. Actual dimensions, layout, and finishes may vary from those depicted in the plans. Furniture shown in the plans are for decorative purposes only and are not included in the purchase of the property.

The developer reserves the right to make modifications, revisions, and changes to the floor plans, specifications and features without prior notice.



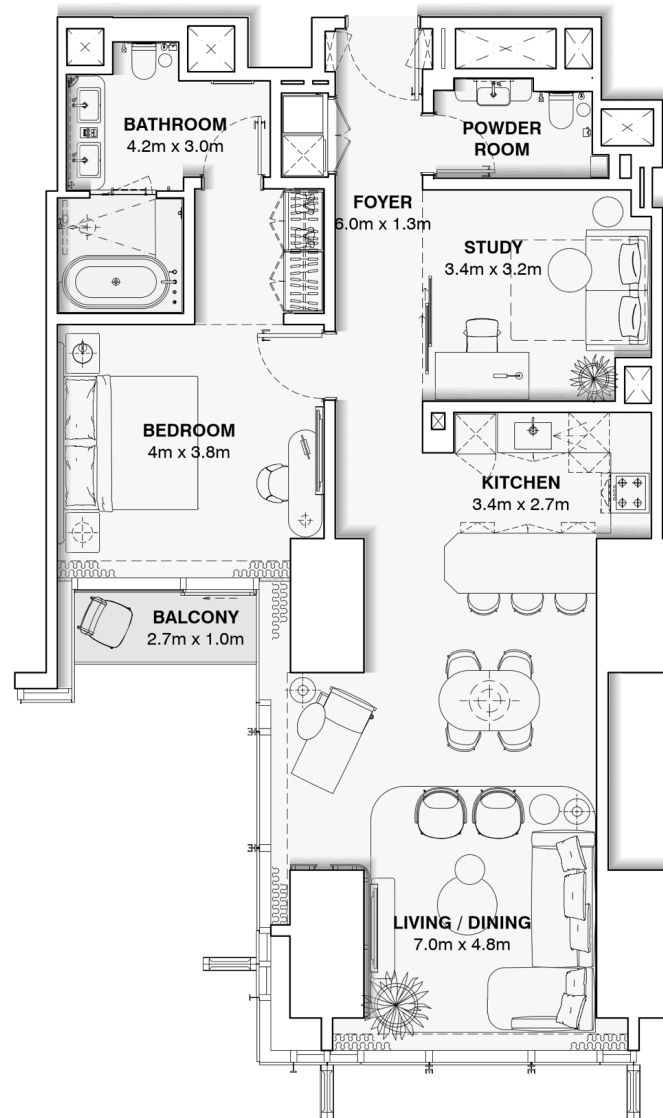
APARTMENT UNIT : 1416 – 5316

ONE BEDROOM + STUDY

APARTMENT AREA : 109.4 m²

BALCONY : 3.0 m²

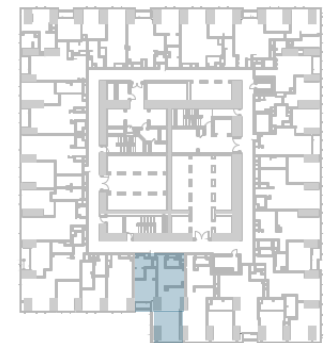
TOTAL AREA : 112.4 m²



DISCLAIMER:

The marketing floor plans provided by the developer are for illustrative purposes only. Actual dimensions, layout, and finishes may vary from those depicted in the plans. Furniture shown in the plans are for decorative purposes only and are not included in the purchase of the property.

The developer reserves the right to make modifications, revisions, and changes to the floor plans, specifications and features without prior notice.

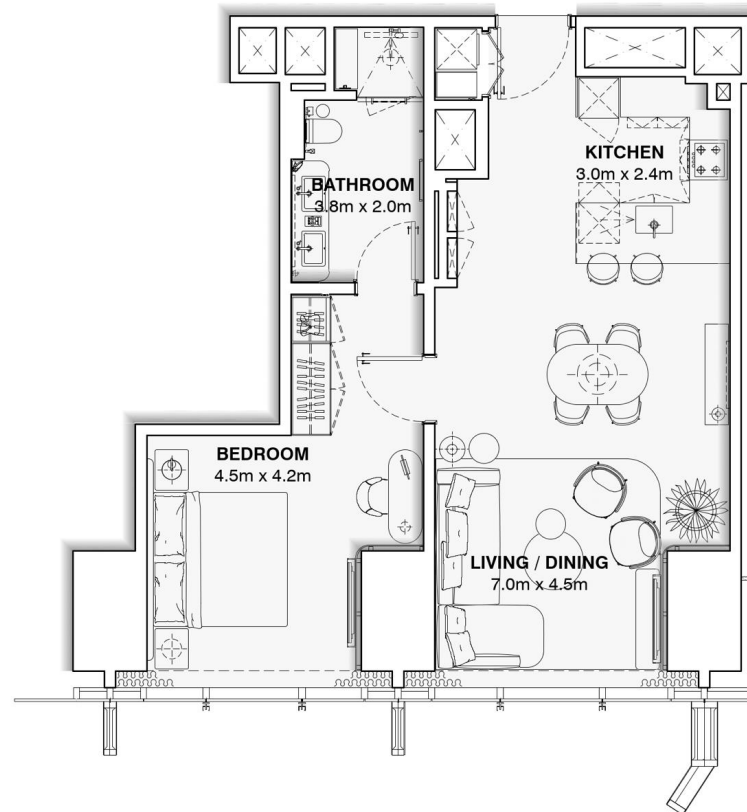


APARTMENT UNIT : 1417 – 5317

ONE BEDROOM

APARTMENT AREA : 73.2 m²

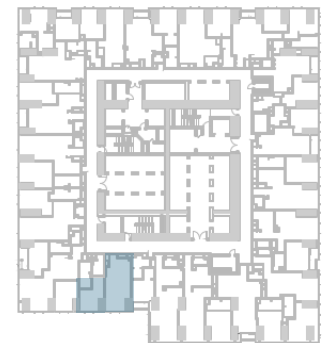
TOTAL AREA : 73.2 m²



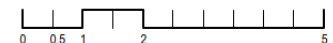
DISCLAIMER:

The marketing floor plans provided by the developer are for illustrative purposes only. Actual dimensions, layout, and finishes may vary from those depicted in the plans. Furniture shown in the plans are for decorative purposes only and are not included in the purchase of the property.

The developer reserves the right to make modifications, revisions, and changes to the floor plans, specifications and features without prior notice.



BURJ | AZIZI
DUBAI



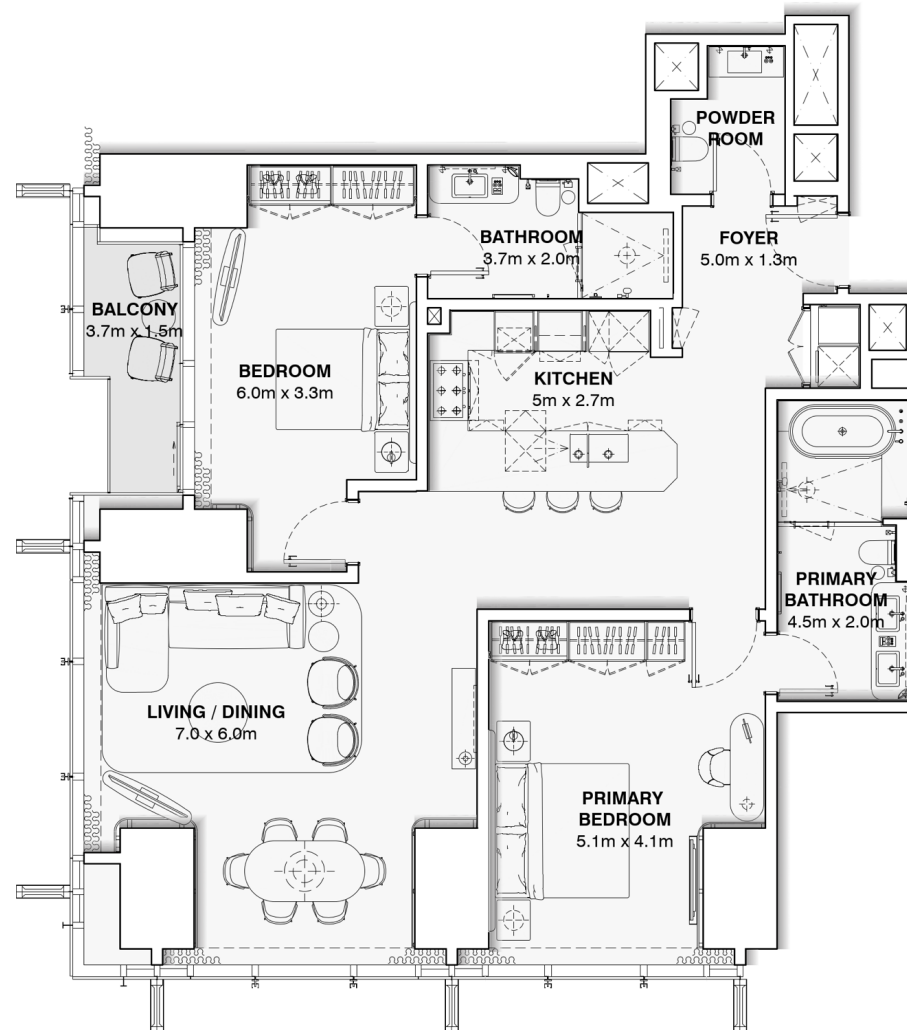
APARTMENT UNIT : 1418 – 5318

TWO BEDROOM

APARTMENT AREA : 135.4 m²

BALCONY : 5.3 m²

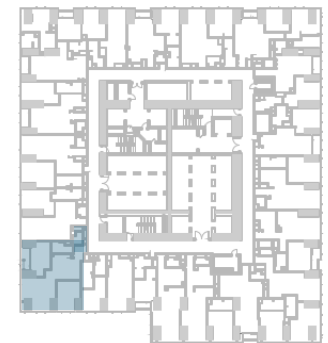
TOTAL AREA : 140.7 m²



DISCLAIMER:

The marketing floor plans provided by the developer are for illustrative purposes only. Actual dimensions, layout, and finishes may vary from those depicted in the plans. Furniture shown in the plans are for decorative purposes only and are not included in the purchase of the property.

The developer reserves the right to make modifications, revisions, and changes to the floor plans, specifications and features without prior notice.



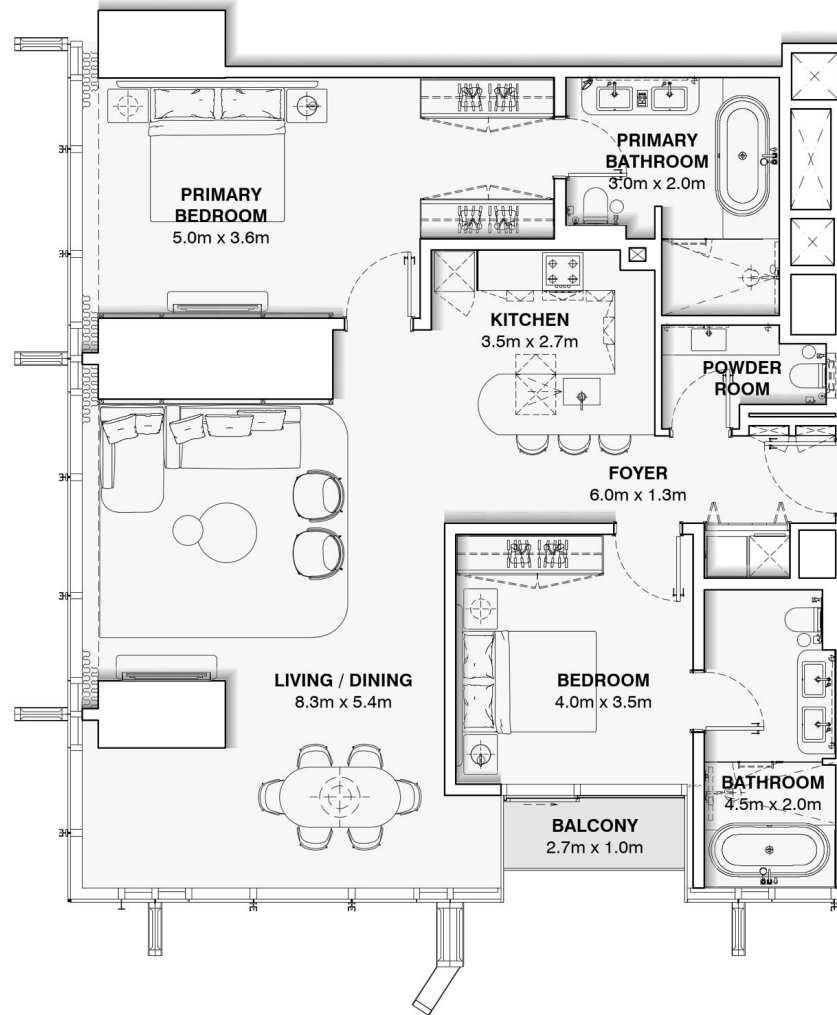
APARTMENT UNIT : 5501 – 6901

TWO BEDROOM

APARTMENT AREA : 134.9 m²

BALCONY AREA : 2.9 m²

TOTAL AREA : 137.9 m²

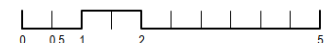


DISCLAIMER:

The marketing floor plans provided by the developer are for illustrative purposes only. Actual dimensions, layout, and finishes may vary from those depicted in the plans. Furniture shown in the plans are for decorative purposes only and are not included in the purchase of the property.

The developer reserves the right to make modifications, revisions, and changes to the floor plans, specifications and features without prior notice.

BURJ | AZIZI
DUBAI

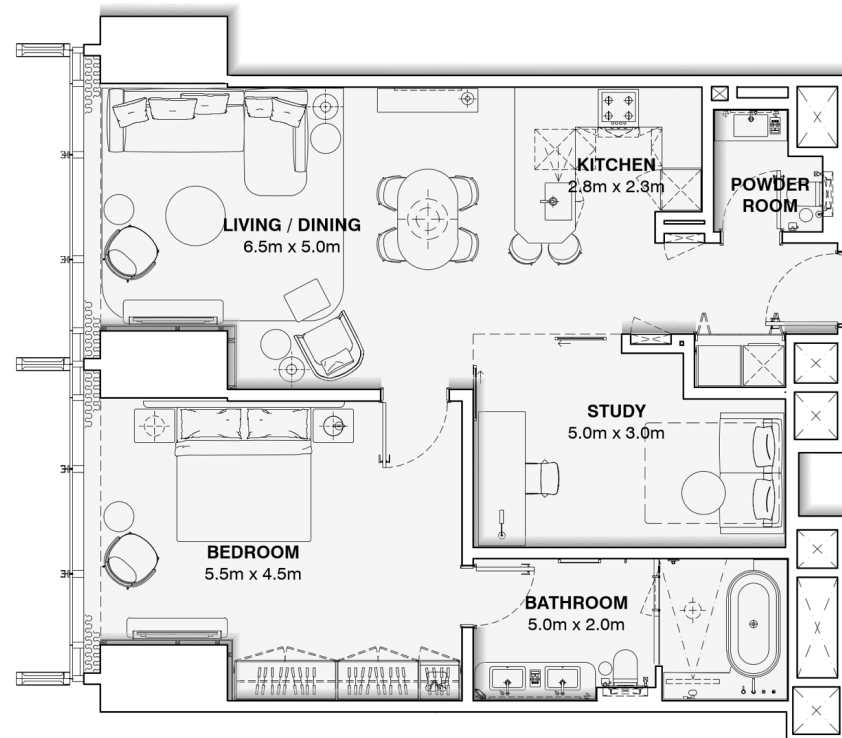


APARTMENT UNIT : 5502 – 6902

ONE BEDROOM + STUDY

APARTMENT AREA : 102.4 m²

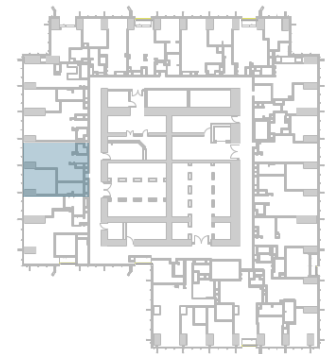
TOTAL AREA : 102.4 m²



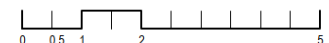
DISCLAIMER:

The marketing floor plans provided by the developer are for illustrative purposes only. Actual dimensions, layout, and finishes may vary from those depicted in the plans. Furniture shown in the plans are for decorative purposes only and are not included in the purchase of the property.

The developer reserves the right to make modifications, revisions, and changes to the floor plans, specifications and features without prior notice.



BURJ | AZIZI
DUBAI

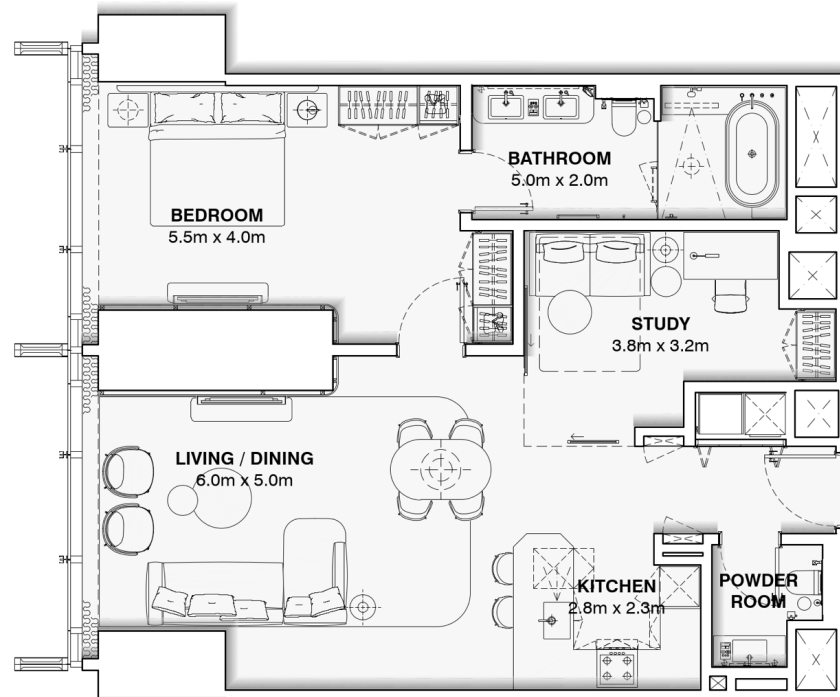


APARTMENT UNIT : 5503 – 6903

ONE BEDROOM + STUDY

APARTMENT AREA : 101.7 m²

TOTAL AREA : 101.7 m²



DISCLAIMER:

The marketing floor plans provided by the developer are for illustrative purposes only. Actual dimensions, layout, and finishes may vary from those depicted in the plans. Furniture shown in the plans are for decorative purposes only and are not included in the purchase of the property.

The developer reserves the right to make modifications, revisions, and changes to the floor plans, specifications and features without prior notice.



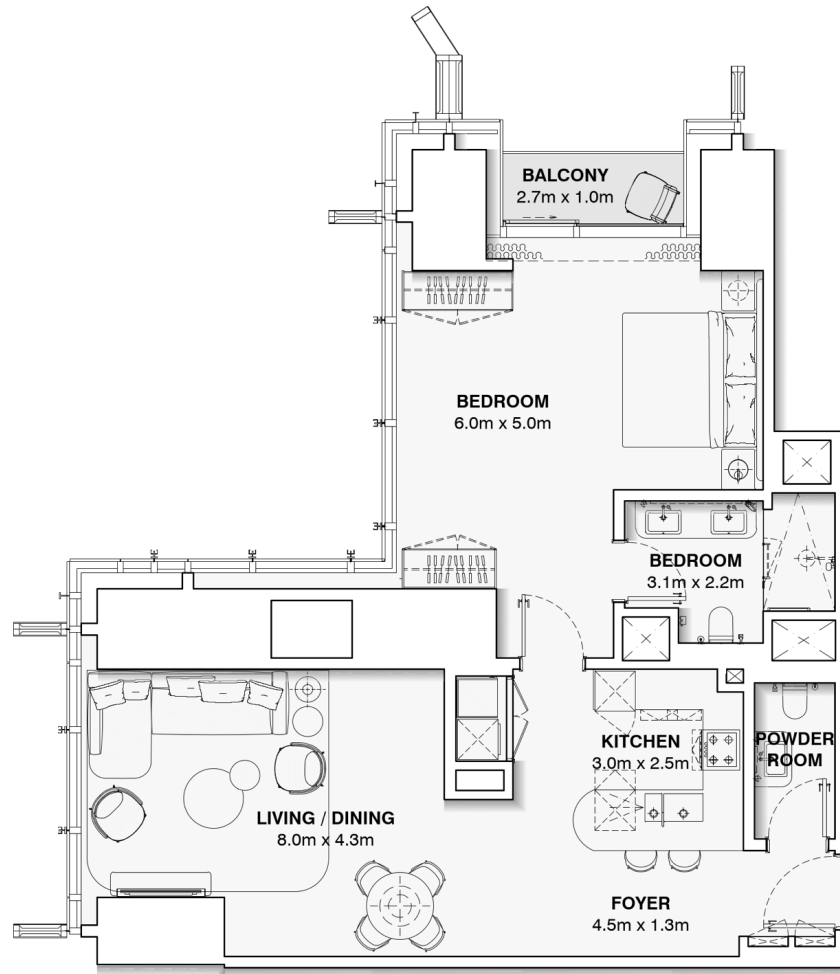
APARTMENT UNIT : 5504 – 6904

ONE BEDROOM

APARTMENT AREA : 99.5 m²

BALCONY AREA: 2.9 m²

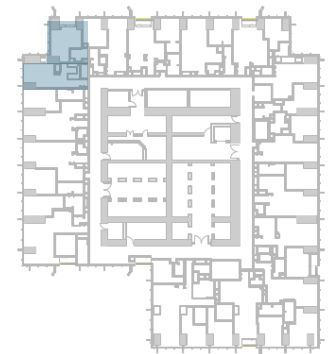
TOTAL AREA : 102.5 m²



DISCLAIMER:

The marketing floor plans provided by the developer are for illustrative purposes only. Actual dimensions, layout, and finishes may vary from those depicted in the plans. Furniture shown in the plans are for decorative purposes only and are not included in the purchase of the property.

The developer reserves the right to make modifications, revisions, and changes to the floor plans, specifications and features without prior notice.

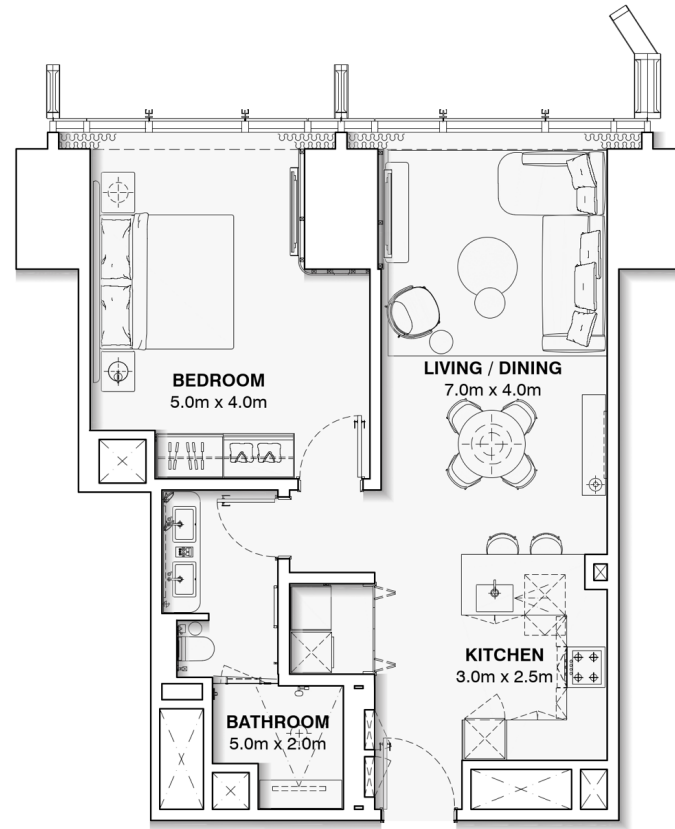


APARTMENT UNIT : 5505 – 6905

ONE BEDROOM

APARTMENT AREA : 74.4 m²

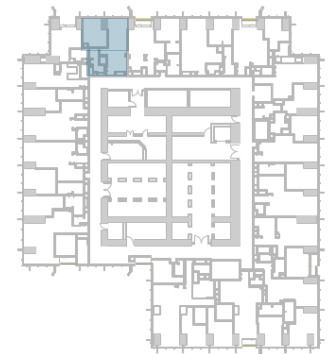
TOTAL AREA : 74.4 m²



DISCLAIMER:

The marketing floor plans provided by the developer are for illustrative purposes only. Actual dimensions, layout, and finishes may vary from those depicted in the plans. Furniture shown in the plans are for decorative purposes only and are not included in the purchase of the property.

The developer reserves the right to make modifications, revisions, and changes to the floor plans, specifications and features without prior notice.



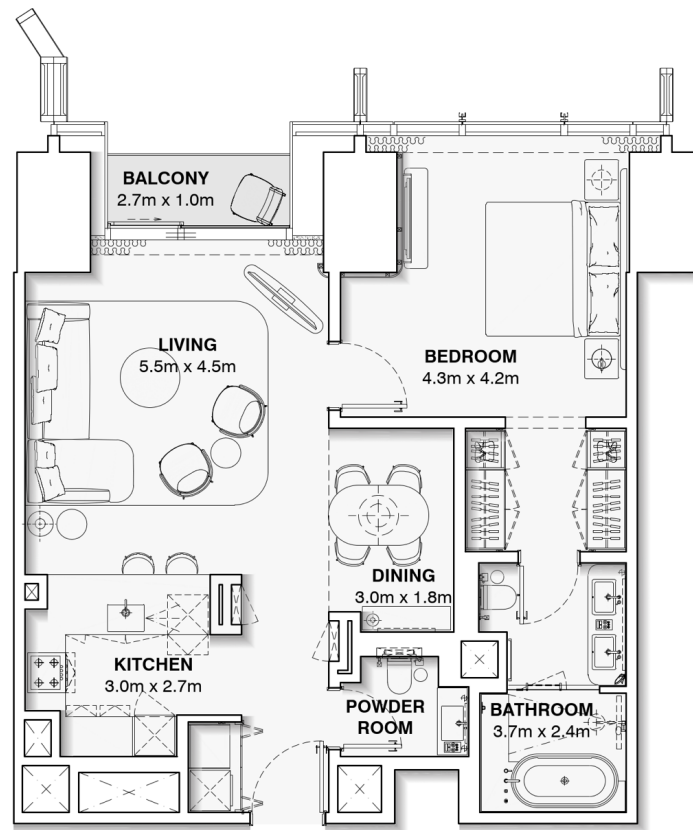
APARTMENT UNIT : 5506 – 6906

ONE BEDROOM

APARTMENT AREA : 85.9 m²

BALCONY AREA : 3.0 m²

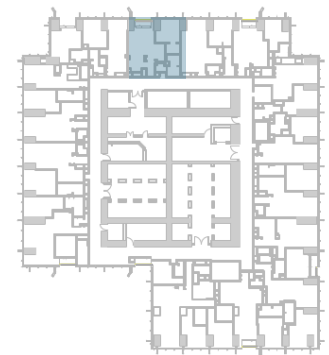
TOTAL AREA : 88.9 m²



DISCLAIMER:

The marketing floor plans provided by the developer are for illustrative purposes only. Actual dimensions, layout, and finishes may vary from those depicted in the plans. Furniture shown in the plans are for decorative purposes only and are not included in the purchase of the property.

The developer reserves the right to make modifications, revisions, and changes to the floor plans, specifications and features without prior notice.

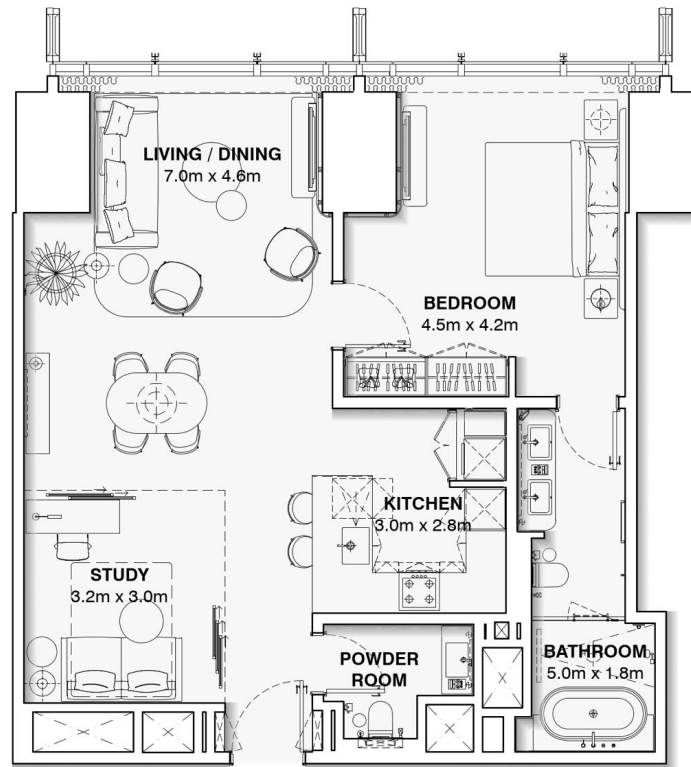


APARTMENT UNIT : 5507 – 6907

ONE BEDROOM

APARTMENT AREA : 92.0 m2

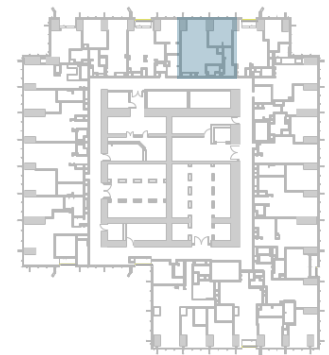
TOTAL AREA : 92.0 m2



DISCLAIMER:

The marketing floor plans provided by the developer are for illustrative purposes only. Actual dimensions, layout, and finishes may vary from those depicted in the plans. Furniture shown in the plans are for decorative purposes only and are not included in the purchase of the property.

The developer reserves the right to make modifications, revisions, and changes to the floor plans, specifications and features without prior notice.



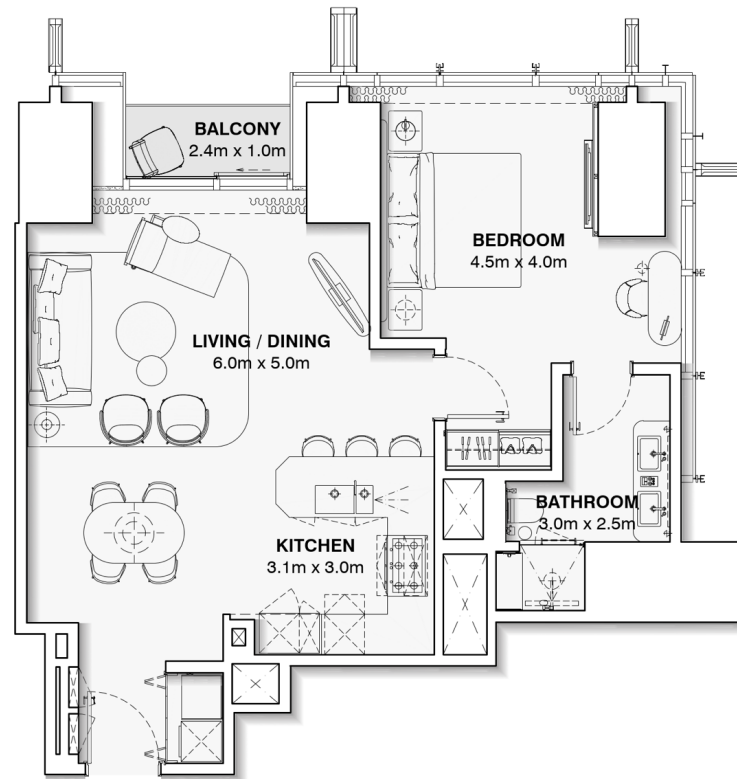
APARTMENT UNIT : 5508 – 6908

ONE BEDROOM

APARTMENT AREA : 82.3 m²

BALCONY AREA : 2.7 m²

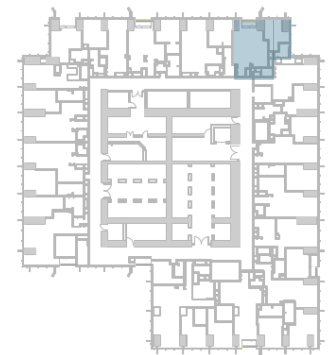
TOTAL AREA : 84.9 m²



DISCLAIMER:

The marketing floor plans provided by the developer are for illustrative purposes only. Actual dimensions, layout, and finishes may vary from those depicted in the plans. Furniture shown in the plans are for decorative purposes only and are not included in the purchase of the property.

The developer reserves the right to make modifications, revisions, and changes to the floor plans, specifications and features without prior notice.

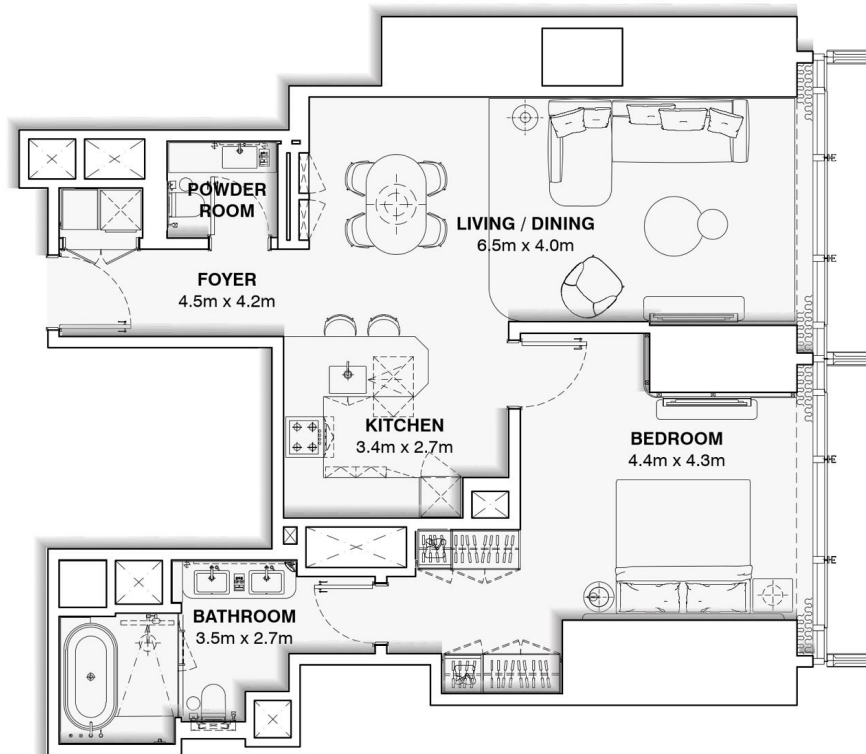


APARTMENT UNIT : 5509 – 6909

ONE BEDROOM

APARTMENT AREA : 94.7 m2

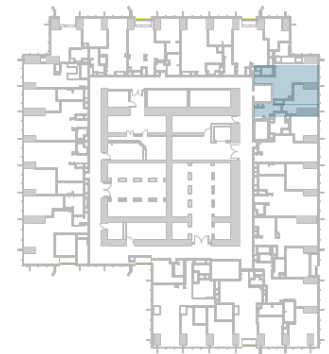
TOTAL AREA : 94.7 m2



DISCLAIMER:

The marketing floor plans provided by the developer are for illustrative purposes only. Actual dimensions, layout, and finishes may vary from those depicted in the plans. Furniture shown in the plans are for decorative purposes only and are not included in the purchase of the property.

The developer reserves the right to make modifications, revisions, and changes to the floor plans, specifications and features without prior notice.

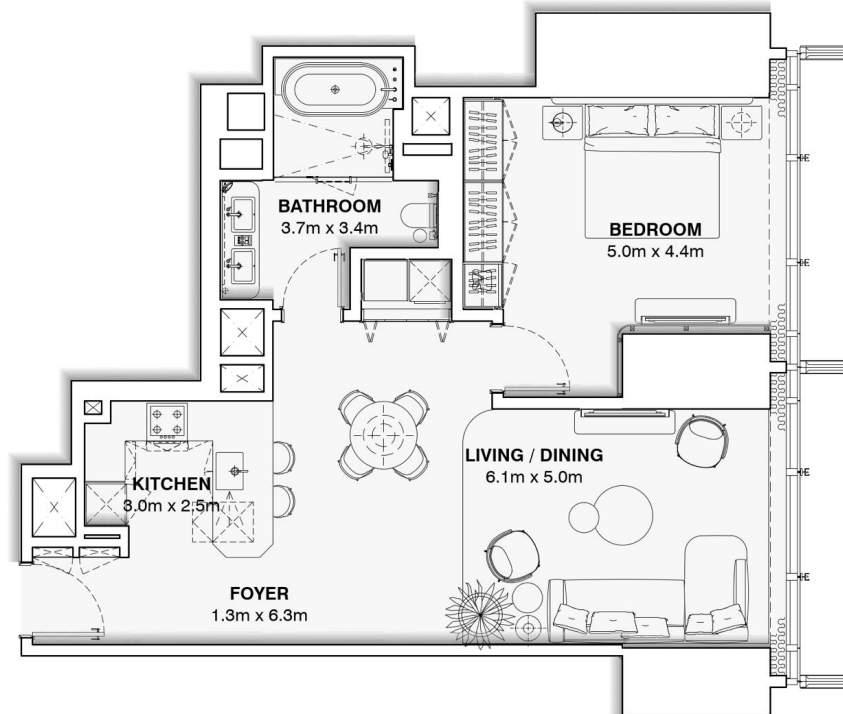


APARTMENT UNIT : 5510 – 6910

ONE BEDROOM

APARTMENT AREA : 84.3 m²

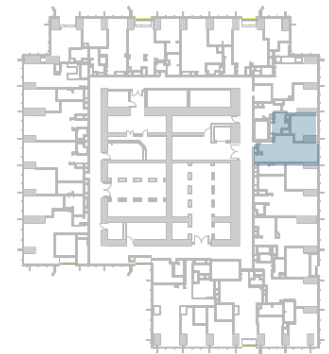
TOTAL AREA : 84.3 m²



DISCLAIMER:

The marketing floor plans provided by the developer are for illustrative purposes only. Actual dimensions, layout, and finishes may vary from those depicted in the plans. Furniture shown in the plans are for decorative purposes only and are not included in the purchase of the property.

The developer reserves the right to make modifications, revisions, and changes to the floor plans, specifications and features without prior notice.

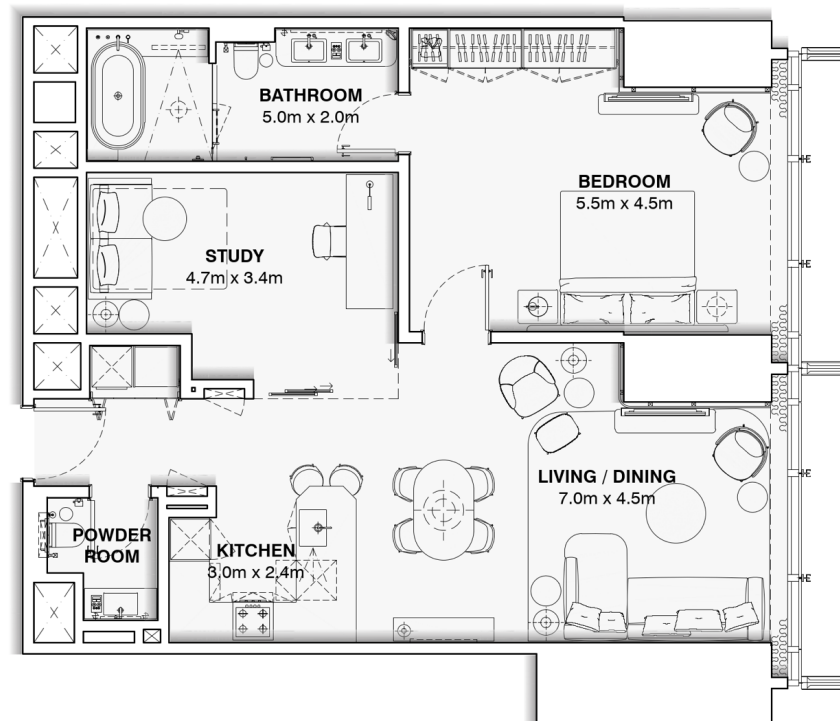


APARTMENT UNIT : 5511 – 6911

ONE BEDROOM + STUDY

APARTMENT AREA : 102.8 m²

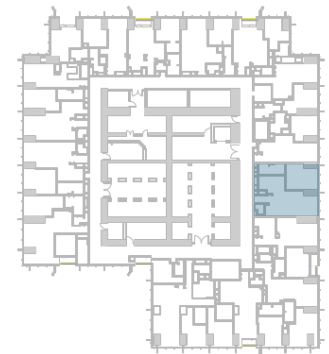
TOTAL AREA : 102.8 m²



DISCLAIMER:

The marketing floor plans provided by the developer are for illustrative purposes only. Actual dimensions, layout, and finishes may vary from those depicted in the plans. Furniture shown in the plans are for decorative purposes only and are not included in the purchase of the property.

The developer reserves the right to make modifications, revisions, and changes to the floor plans, specifications and features without prior notice.



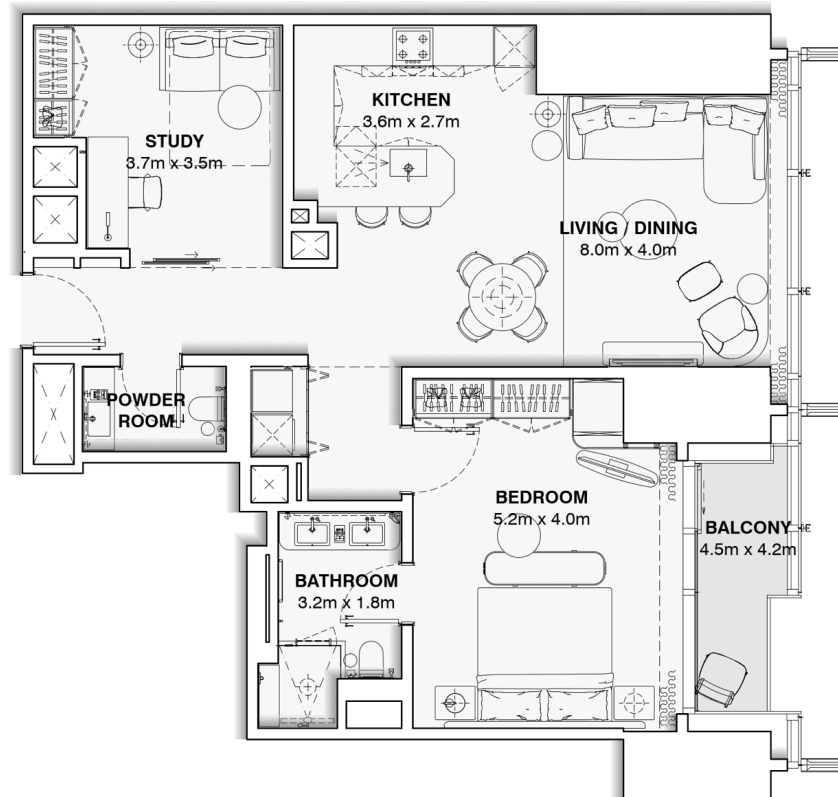
APARTMENT UNIT : 5512 – 6912

ONE BEDROOM + STUDY

APARTMENT AREA : 98.3 m²

BALCONY AREA : 2.9 m²

TOTAL AREA : 103.2 m²



DISCLAIMER:

The marketing floor plans provided by the developer are for illustrative purposes only. Actual dimensions, layout, and finishes may vary from those depicted in the plans. Furniture shown in the plans are for decorative purposes only and are not included in the purchase of the property.

The developer reserves the right to make modifications, revisions, and changes to the floor plans, specifications and features without prior notice.

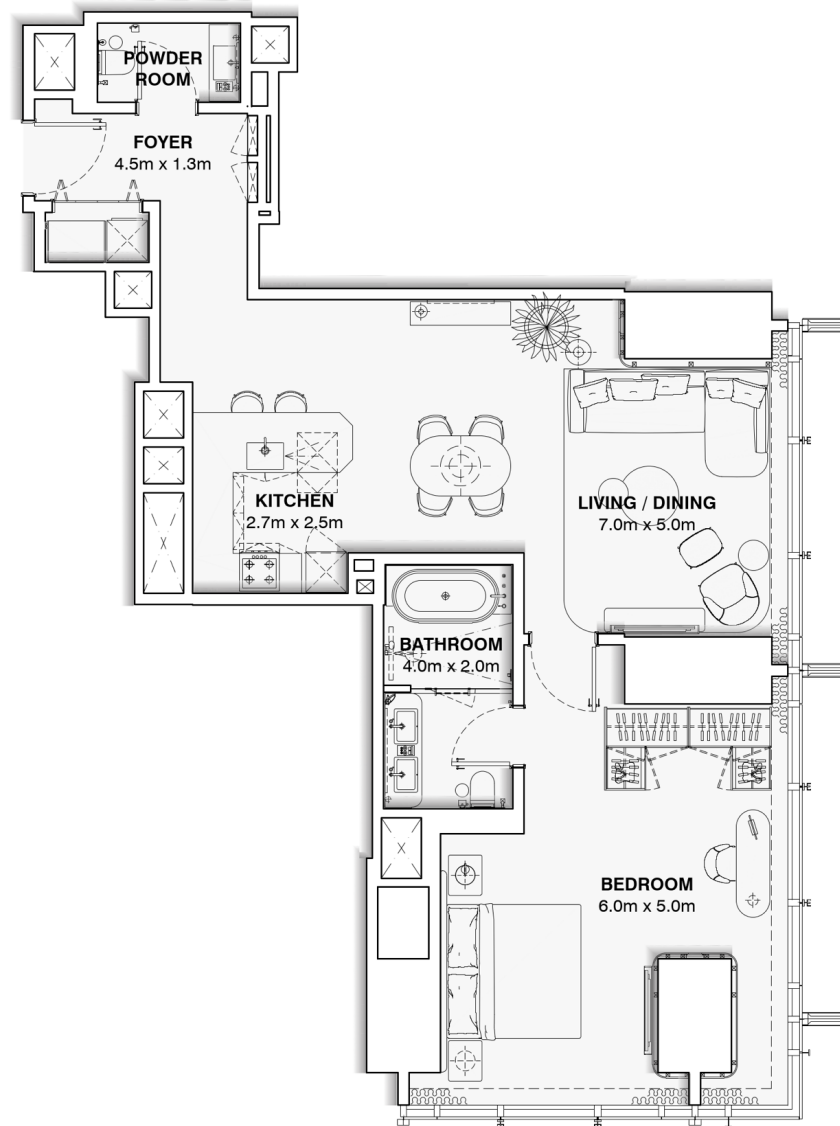


APARTMENT UNIT : 5513 – 6913

ONE BEDROOM

APARTMENT AREA : 99.3 m²

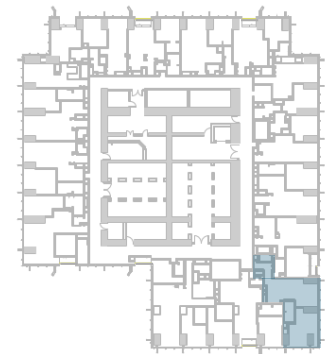
TOTAL AREA : 99.3 m²



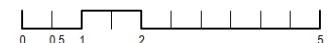
DISCLAIMER:

The marketing floor plans provided by the developer are for illustrative purposes only. Actual dimensions, layout, and finishes may vary from those depicted in the plans. Furniture shown in the plans are for decorative purposes only and are not included in the purchase of the property.

The developer reserves the right to make modifications, revisions, and changes to the floor plans, specifications and features without prior notice.



BURJ | AZIZI
DUBAI



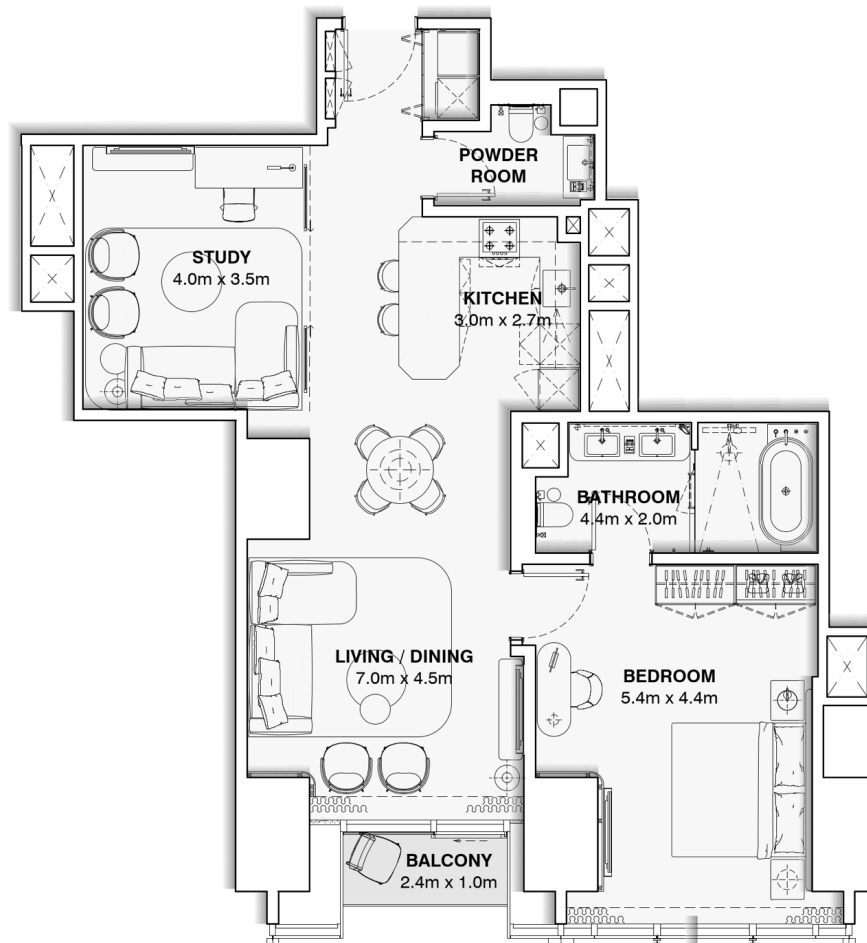
APARTMENT UNIT : 5514 – 6914

ONE BEDROOM + STUDY

APARTMENT AREA : 98.9 m²

BALCONY AREA : 2.7 m²

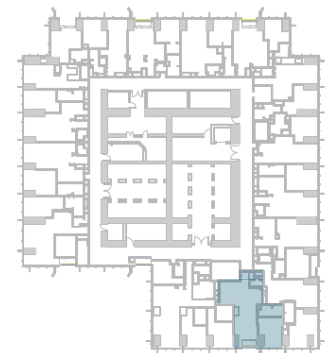
TOTAL AREA : 101.6 m²



DISCLAIMER:

The marketing floor plans provided by the developer are for illustrative purposes only. Actual dimensions, layout, and finishes may vary from those depicted in the plans. Furniture shown in the plans are for decorative purposes only and are not included in the purchase of the property.

The developer reserves the right to make modifications, revisions, and changes to the floor plans, specifications and features without prior notice.

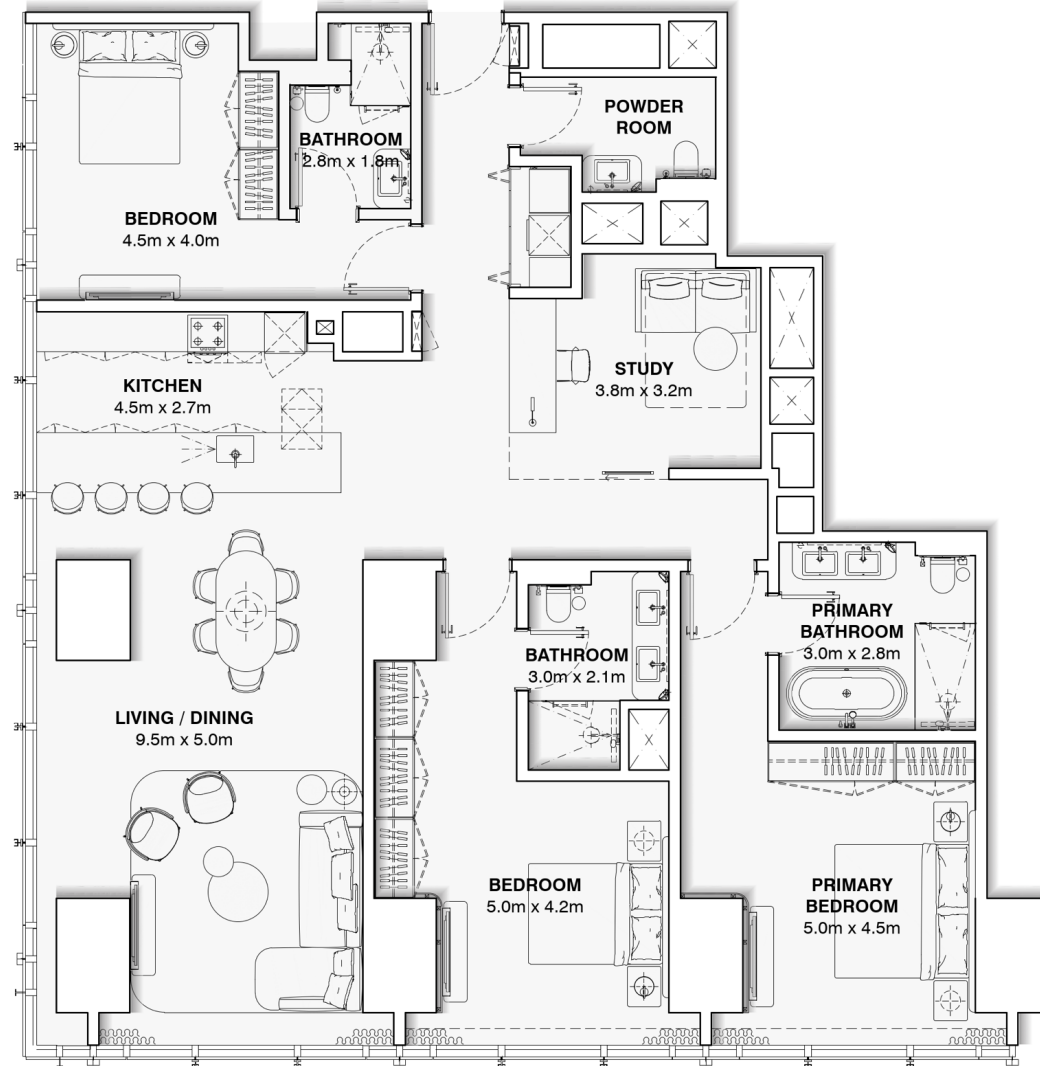


APARTMENT UNIT : 5515 – 6915

THREE BEDROOM + STUDY

APARTMENT AREA : 189.0 m²

TOTAL AREA : 189.0 m²



DISCLAIMER:

The marketing floor plans provided by the developer are for illustrative purposes only. Actual dimensions, layout, and finishes may vary from those depicted in the plans. Furniture shown in the plans are for decorative purposes only and are not included in the purchase of the property.

The developer reserves the right to make modifications, revisions, and changes to the floor plans, specifications and features without prior notice.

