

# HELVETIA

R E S I D E N C E S

LAYOUTS

DEVELOPED BY







LIVING SPACES

## OPEN-PLAN LIVING SPACES BATHED IN NATURAL LIGHT

Each residence has been designed to offer a comfortable living experience. The open-plan layouts allow for a seamless flow from contemporary kitchens to spacious lounges providing the ideal environment for entertaining, dining and relaxation. Floor-to-ceiling windows allow ample natural light into each carefully curated space.

EACH RESIDENCE IS FINISHED TO THE  
HIGHEST OF STANDARDS





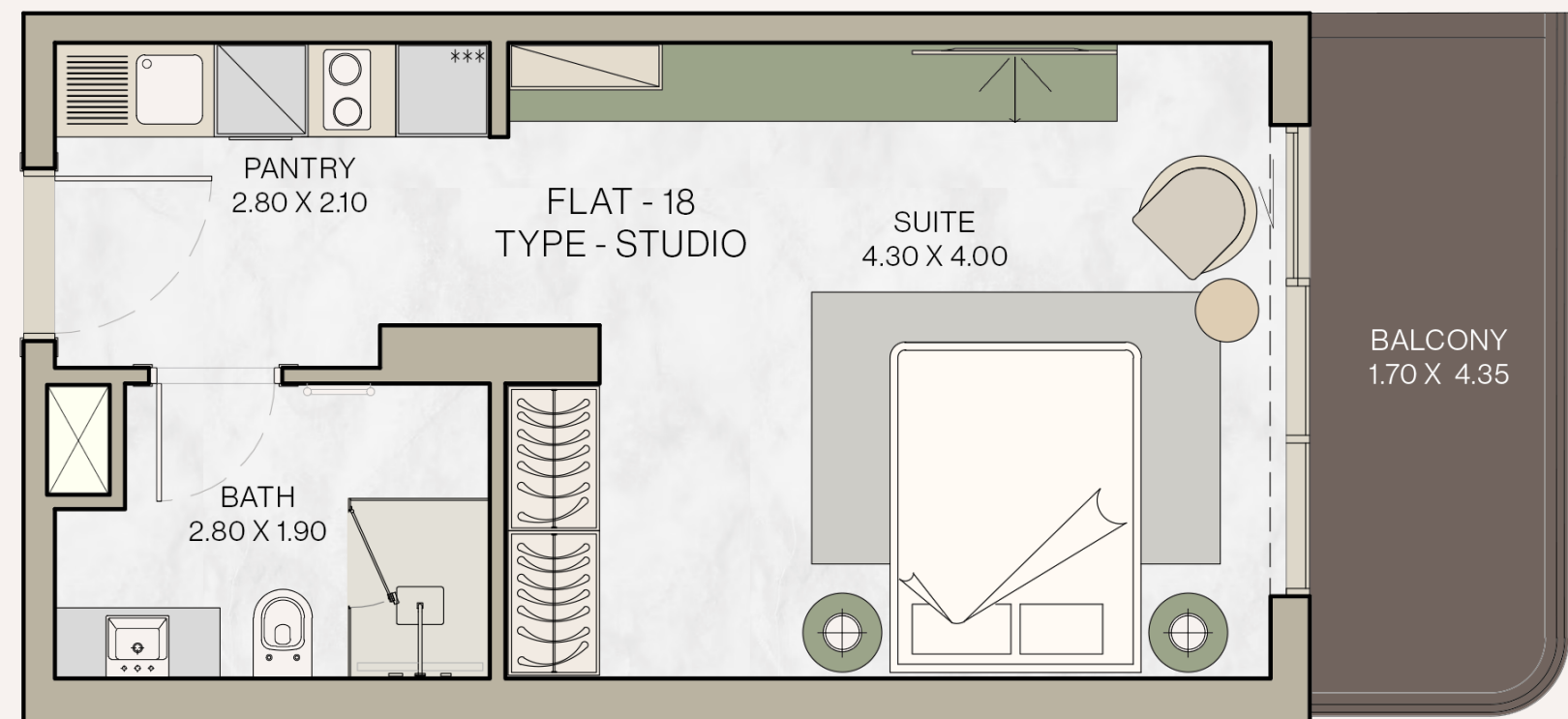
# STUDIO APARTMENTS

FROM 425 TO 754 SQ.FT

## STYLISH STUDIOS WITH PRECIOUS OUTDOOR SPACE

The stylish studio apartments offer comfortable and airy living spaces with ample natural light and the benefit of a spacious balcony.

The interiors are decorated in welcoming neutral shades, complemented by natural wooden features and marble tiling and finished with exquisite lighting features.



SUITE AREA	365 sq.ft 33.92 sq.m
------------	-------------------------

BALCONY AREA	80 sq.ft 7.41 sq.m
--------------	-----------------------

TOTAL AREA	445 sq.ft 41.33 sq.m
------------	-------------------------

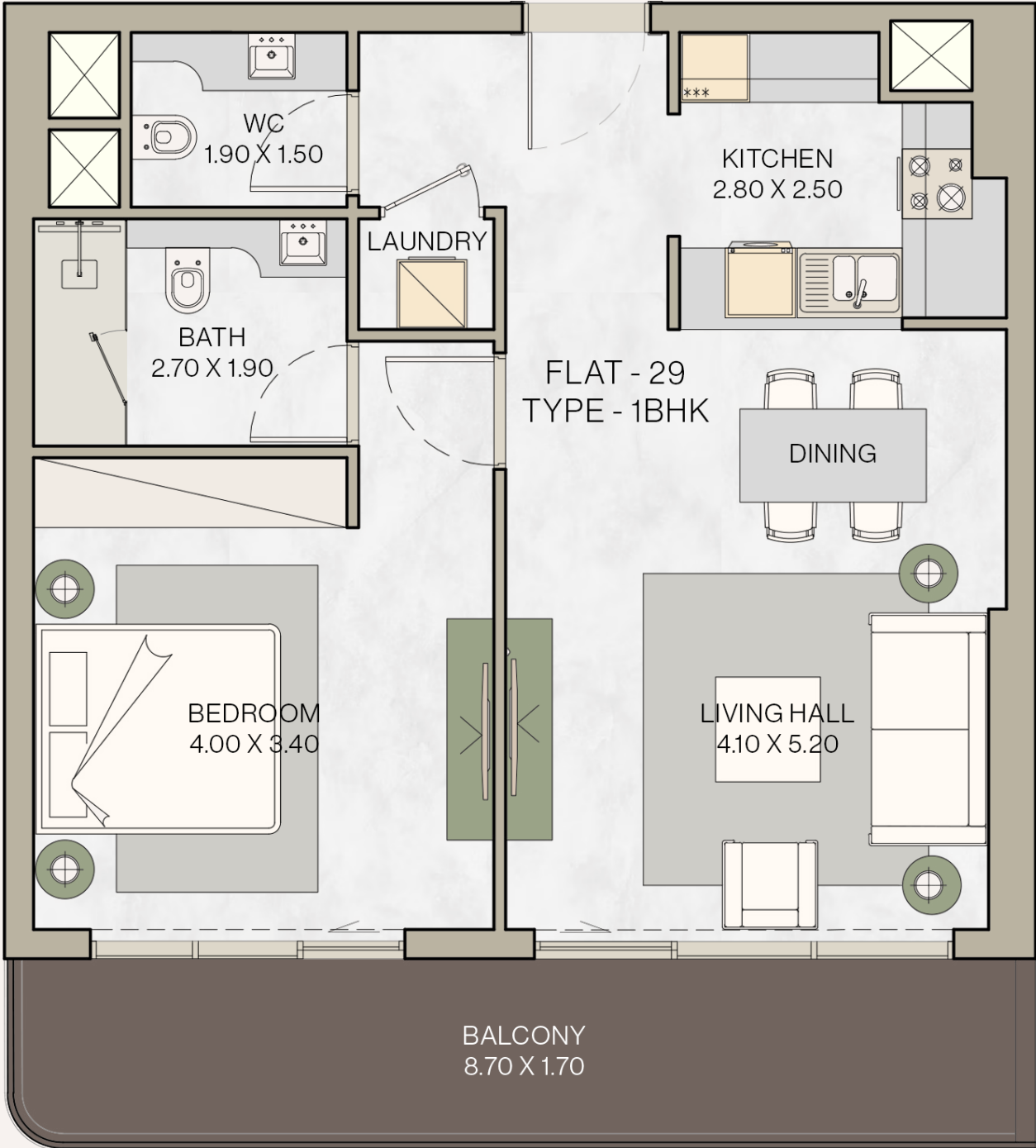
# ONE-BEDROOM APARTMENTS

FROM 623 TO 1,056 SQ.FT

## WARM AND WELCOMING HARMONIOUS HOMES

The one-bedroom apartments are carefully crafted to include a tranquil living space and an inviting dining area, enhanced by statement lighting, open shelving, high ceilings, and seamless marble tiling. The bathrooms and bedrooms echo these design features for a truly harmonious experience.

SUITE AREA	722 sq.ft 67.08 sq.m
BALCONY AREA	160 sq.ft 14.90 sq.m
TOTAL AREA	882 sq.ft 81.98 sq.m



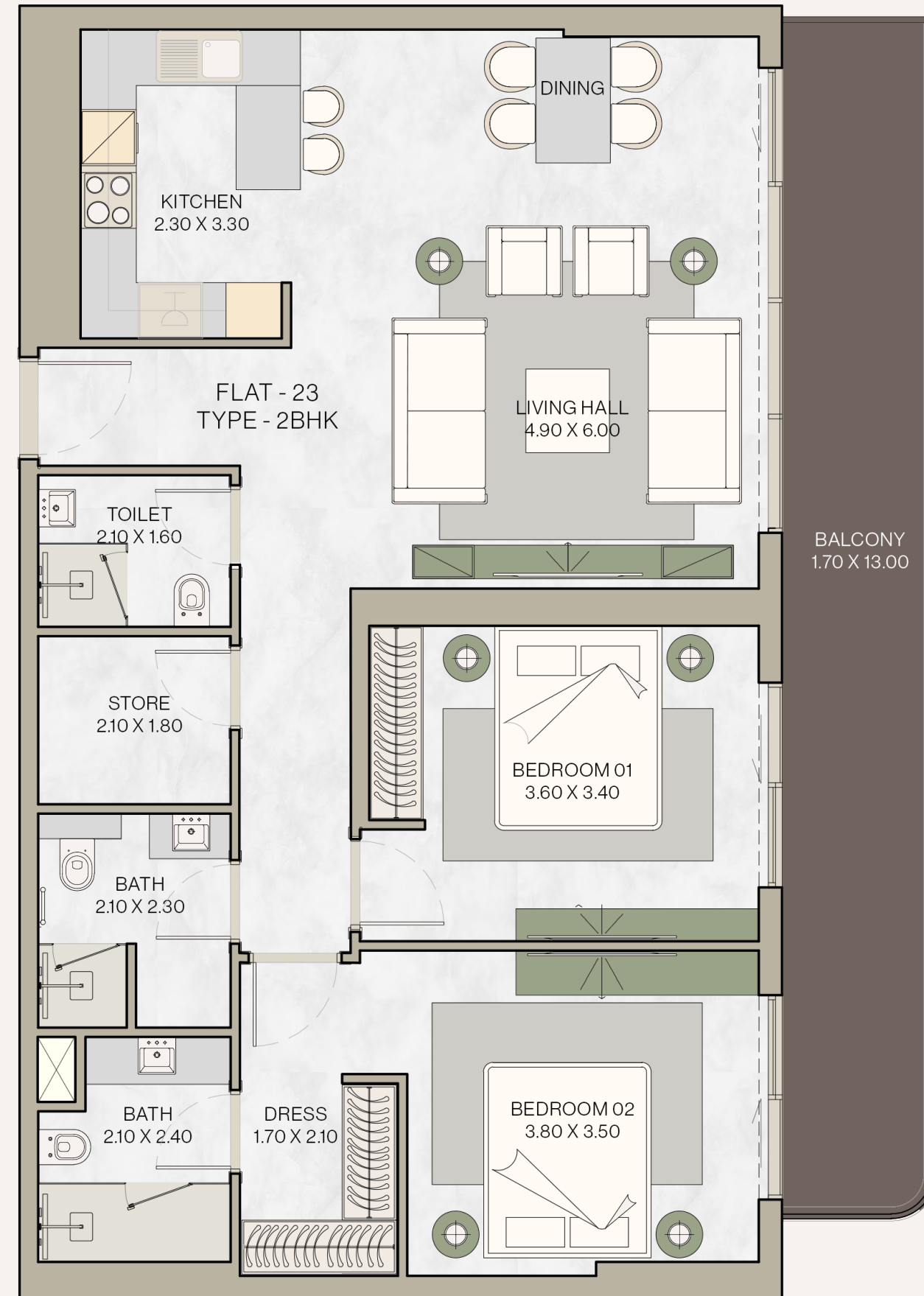
# TWO-BEDROOM APARTMENTS

FROM 1,193 TO 2,442 SQ.FT

## SPACIOUS RESIDENCES, IDEAL FOR ENTERTAINING

The elegantly adorned two-bedroom residences are ideal for hosting guests and enjoying well-deserved downtime. The spacious living areas are designed for entertaining as they accommodate full dining room tables. Abundant windows infuse the space with natural light, while modern light fixtures add contemporary flair.

SUITE AREA	1,163 sq.ft 108.02 sq.m
BALCONY AREA	237 sq.ft 22.08 sq.m
TOTAL AREA	1400 sq.ft 130.10 sq.m

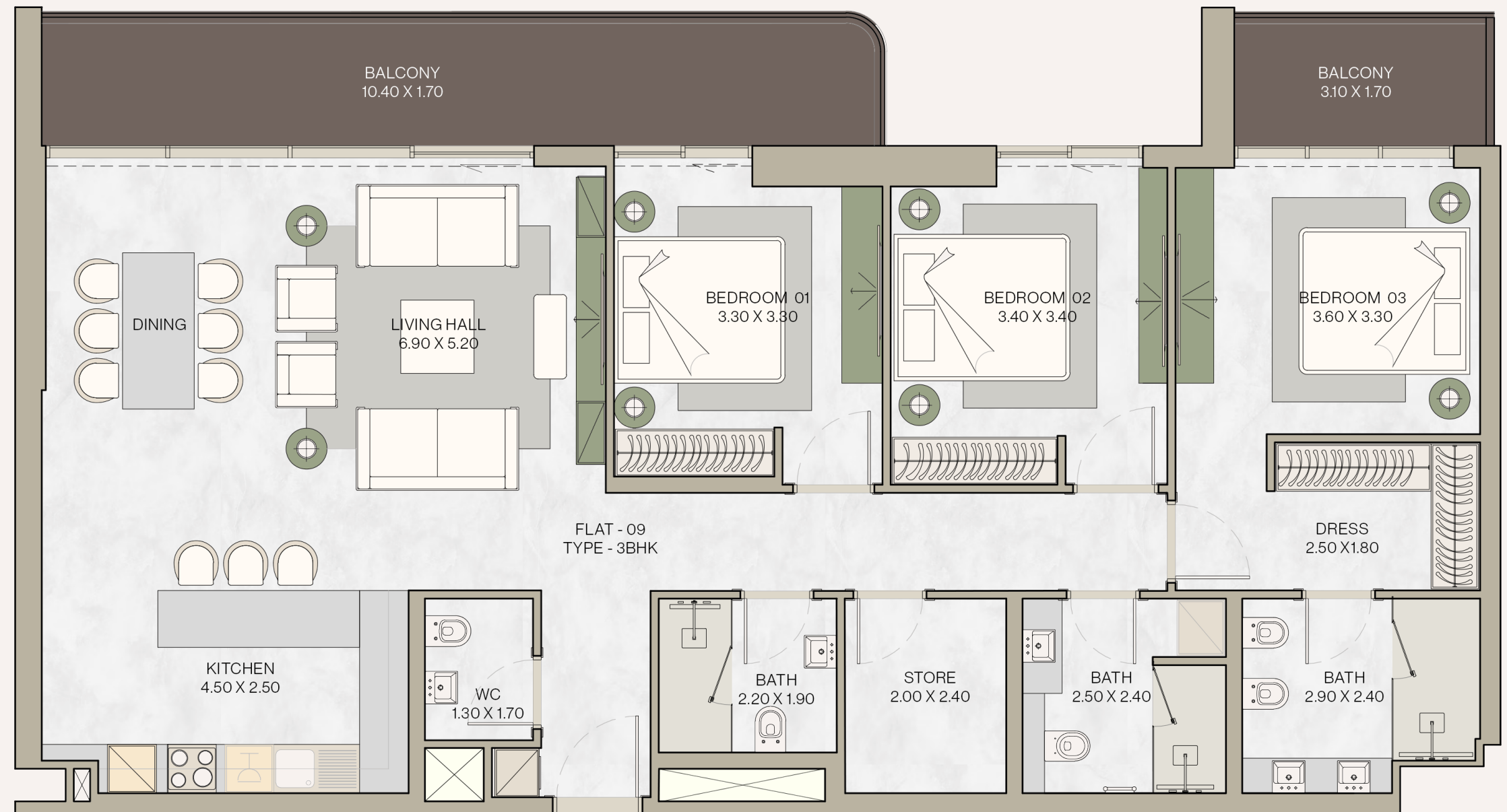


# THREE-BEDROOM APARTMENTS

FROM 1,240 TO 3,431 SQ.FT

## STYLISH FAMILY HOMES

The three-bedroom apartments are ideal for larger families with spacious open-plan living areas. The kitchen presents a sleek, handleless aesthetic with modern appliances. Contemporary design elements, including marble tiles, wooden wall panelling, and floor-to-ceiling windows, define the bathrooms and bedrooms.



SUITE AREA	1,519 sq.ft 141.09 sq.m
BALCONY AREA	255 sq.ft 23.75 sq.m
TOTAL AREA	1,774 sq.ft 164.84 sq.m



# 1ST FLOOR

STUDIO  | 1 BEDROOMS  | 2 BEDROOMS  | 3 BEDROOMS 





# 2ND - 4TH FLOOR

STUDIO  | 1 BEDROOMS  | 2 BEDROOMS  | 3 BEDROOMS





# 5TH - 6TH FLOOR

STUDIO



1 BEDROOMS



2 BEDROOMS



3 BEDROOMS



# 7TH - 12TH FLOOR

STUDIO  | 1 BEDROOMS  | 2 BEDROOMS  | 3 BEDROOMS





# 13TH FLOOR

STUDIO  | 1 BEDROOMS  | 2 BEDROOMS  | 3 BEDROOMS





# 14TH FLOOR

STUDIO  | 1 BEDROOMS  | 2 BEDROOMS  | 3 BEDROOMS



# 15TH FLOOR

STUDIO  | 1 BEDROOMS  | 2 BEDROOMS  | 3 BEDROOMS



# 16TH - 19TH FLOOR

STUDIO  | 1 BEDROOMS  | 2 BEDROOMS  | 3 BEDROOMS





# 20TH FLOOR

STUDIO  | 1 BEDROOMS  | 2 BEDROOMS  | 3 BEDROOMS 





# 21ST FLOOR

STUDIO  | 1 BEDROOMS  | 2 BEDROOMS  | 3 BEDROOMS 



# HELVETIA

R E S I D E N C E S

The information in this document is indicative and is intended to act as a guide only as to the finished product. Accordingly, due to DHG Property Group policy of continuous improvement, the finished product may vary from the information provided. These particulars should not be relied upon as statements of fact or representations and applicants must satisfy themselves by inspection or otherwise as to their correctness. This information does not constitute a contract or warranty. The dimensions given on plans are subject to minor variations and are not intended to be used for carpet sizes, appliance sizes or items of furniture.