

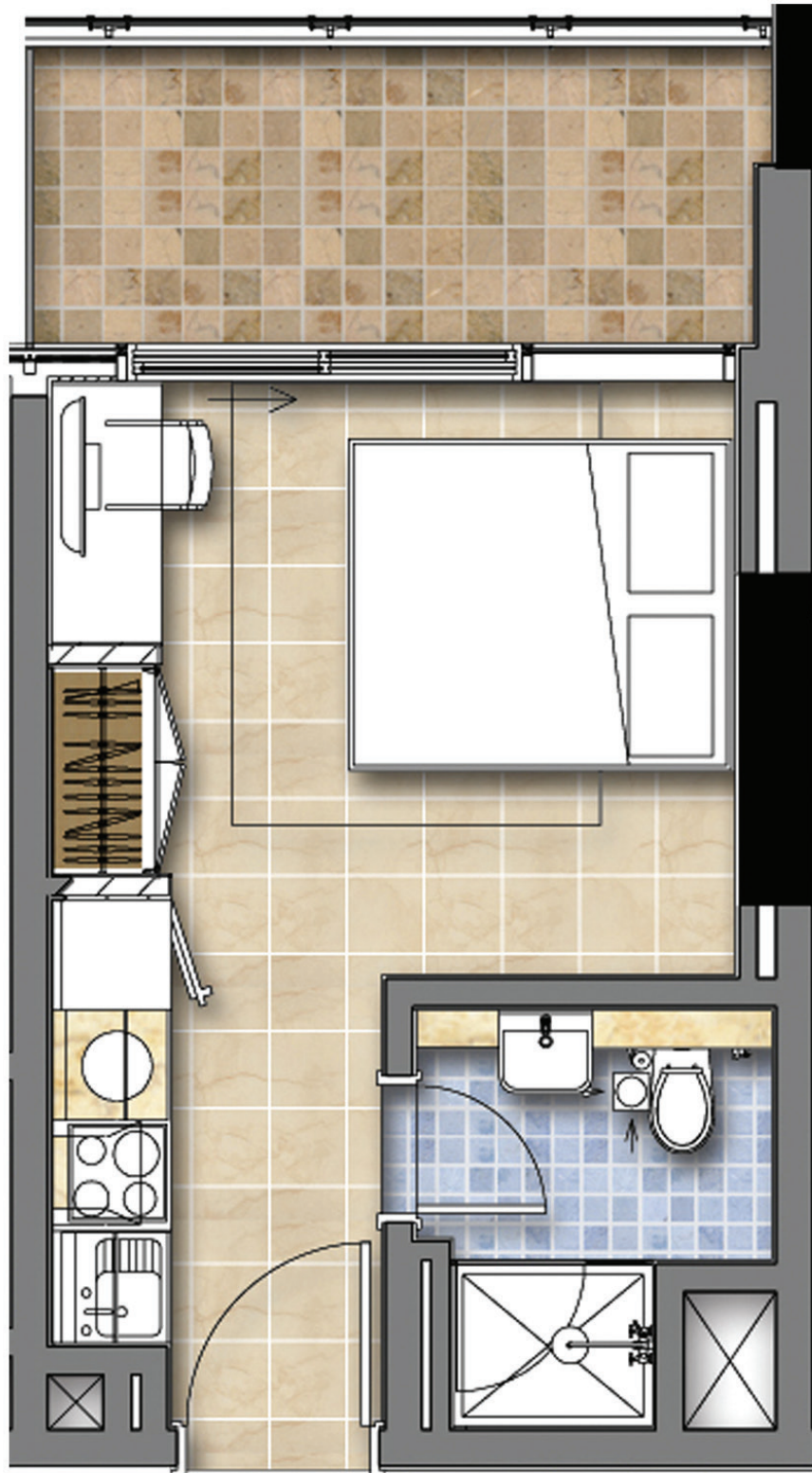
DAMAC
MERANO
TOWER
FLOOR PLANS



The background is a solid dark blue with a fine, pebbled texture. On the left side, there are two overlapping geometric shapes: a dark blue triangle pointing towards the top-left corner, and a lighter blue shape that resembles a stylized 'S' or a curved arrow pointing downwards.

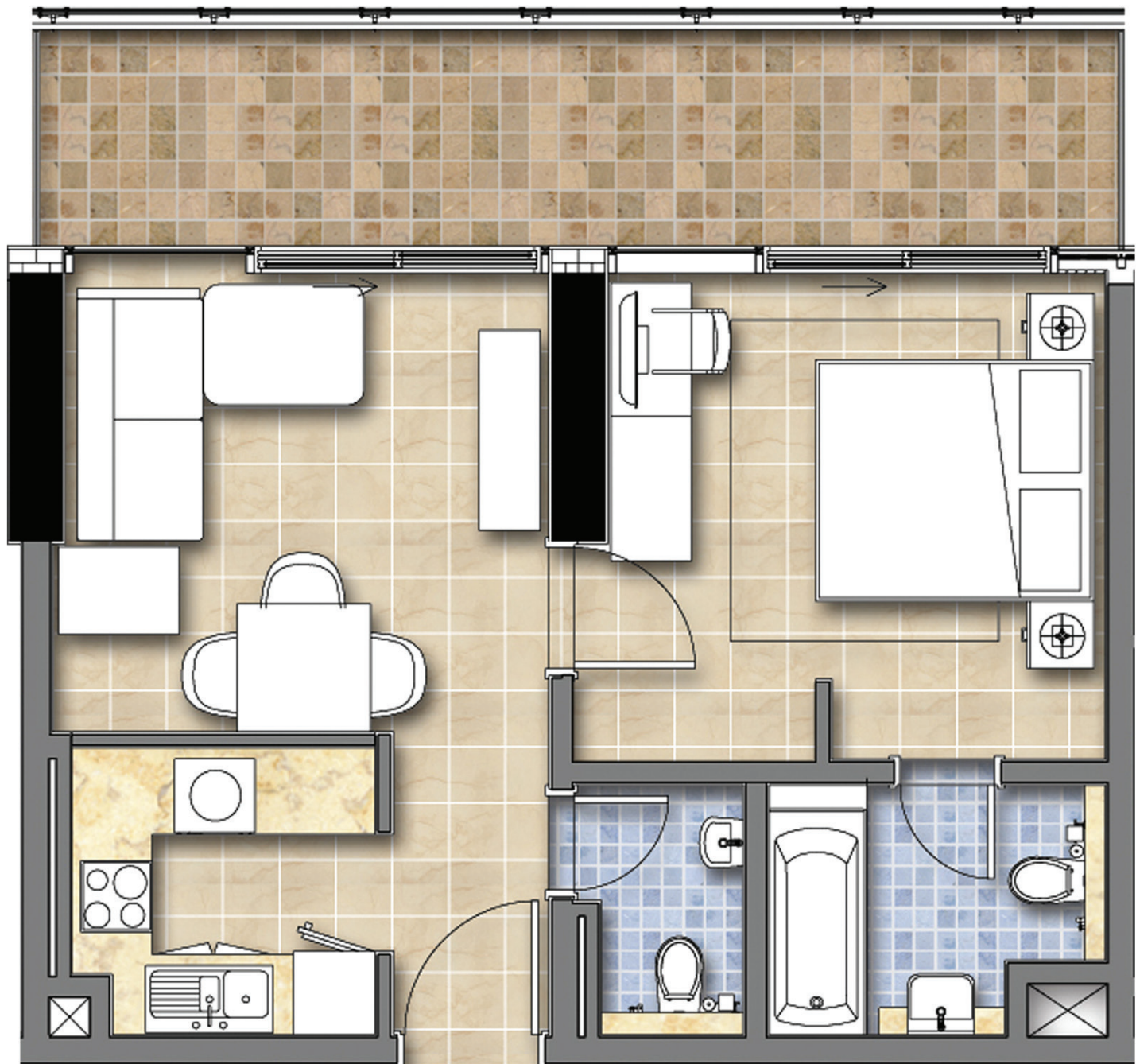
UNIT PLANS

STUDIO



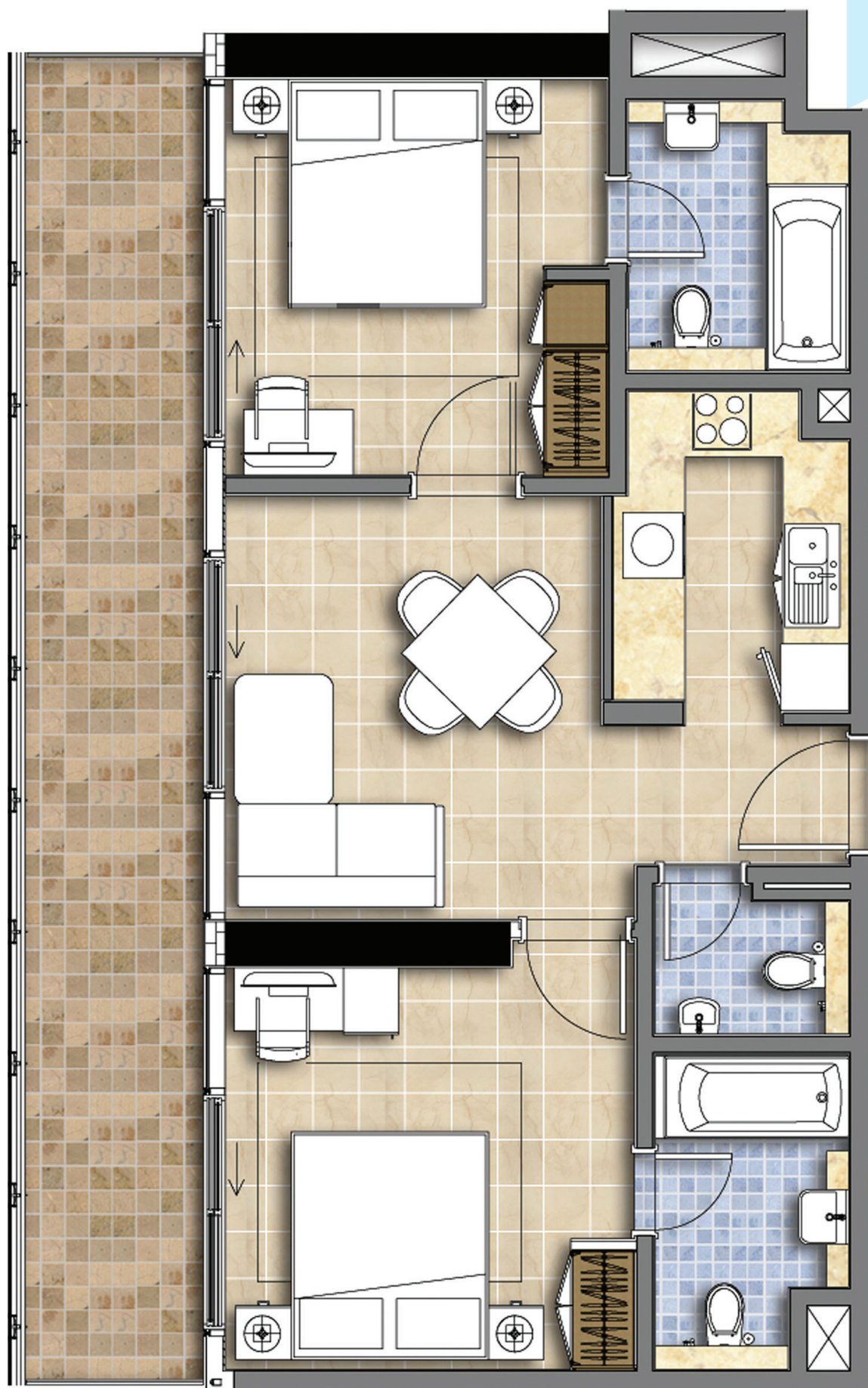
Disclaimer: All pictures, plans, layouts, information, data and details included in this brochure are indicative only and may change at any time up to the final 'as built' status in accordance with final designs of the project, regulatory approvals and planning permissions.

1 BEDROOM



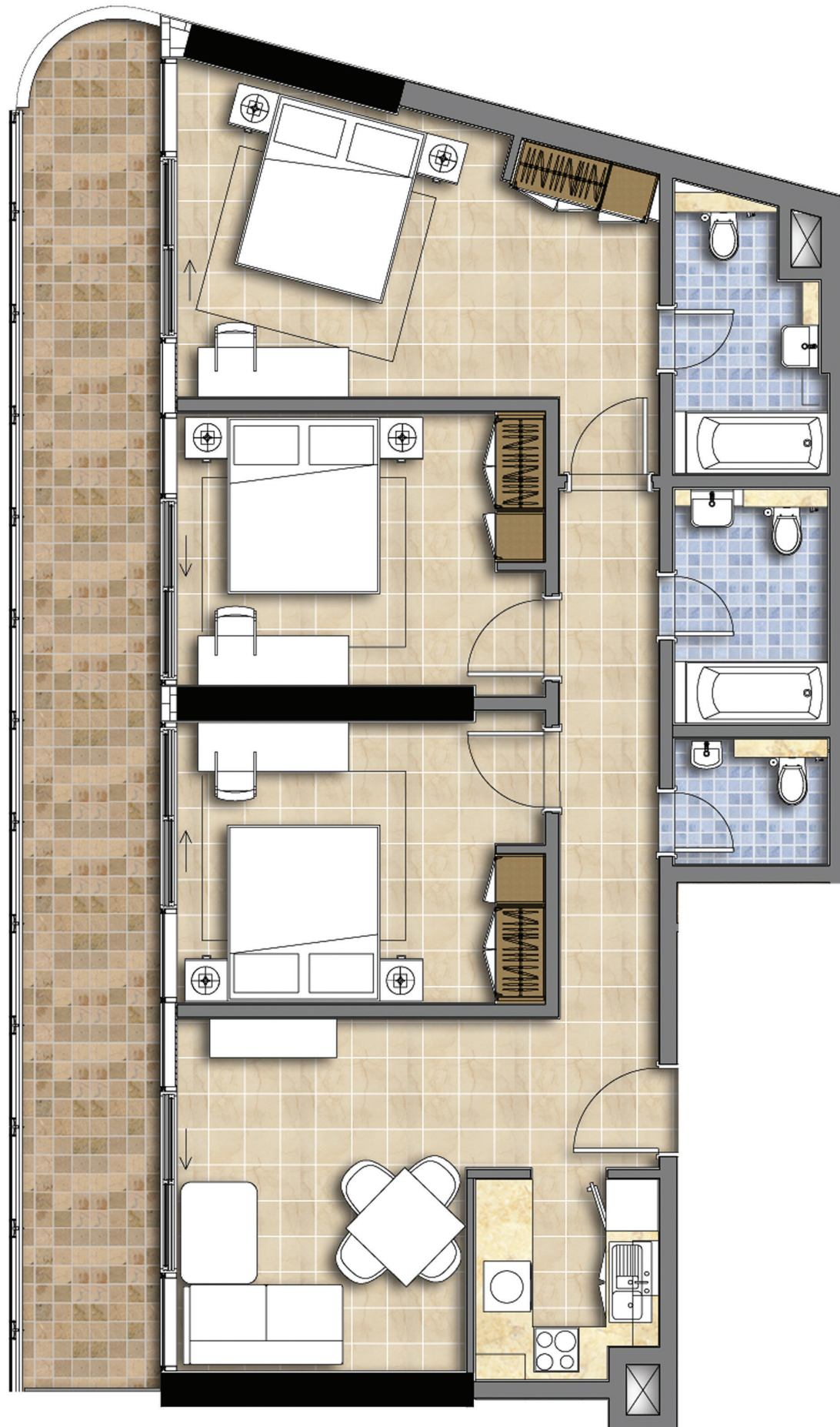
Disclaimer: All pictures, plans, layouts, information, data and details included in this brochure are indicative only and may change at any time up to the final 'as built' status in accordance with final designs of the project, regulatory approvals and planning permissions.

2 BEDROOMS



Disclaimer: All pictures, plans, layouts, information, data and details included in this brochure are indicative only and may change at any time up to the final 'as built' status in accordance with final designs of the project, regulatory approvals and planning permissions.

3 BEDROOMS



Disclaimer: All pictures, plans, layouts, information, data and details included in this brochure are indicative only and may change at any time up to the final 'as built' status in accordance with final designs of the project, regulatory approvals and planning permissions.

FLOOR PLANS

TYPICAL FLOOR PLAN

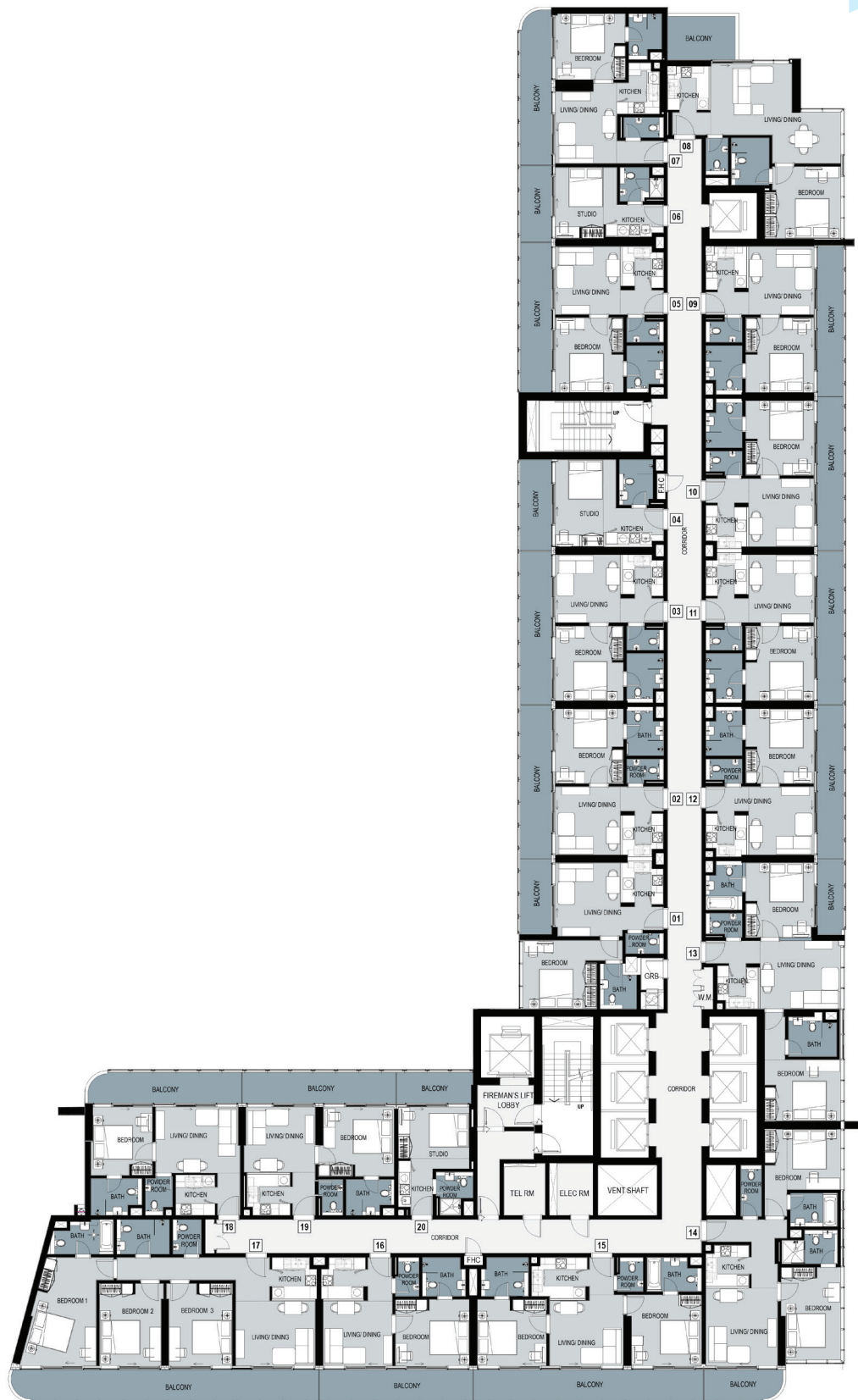
LEVEL 2



Disclaimer: All pictures, plans, layouts, information, data and details included in this brochure are indicative only and may change at any time up to the final 'as built' status in accordance with final designs of the project, regulatory approvals and planning permissions.

TYPICAL FLOOR PLANS

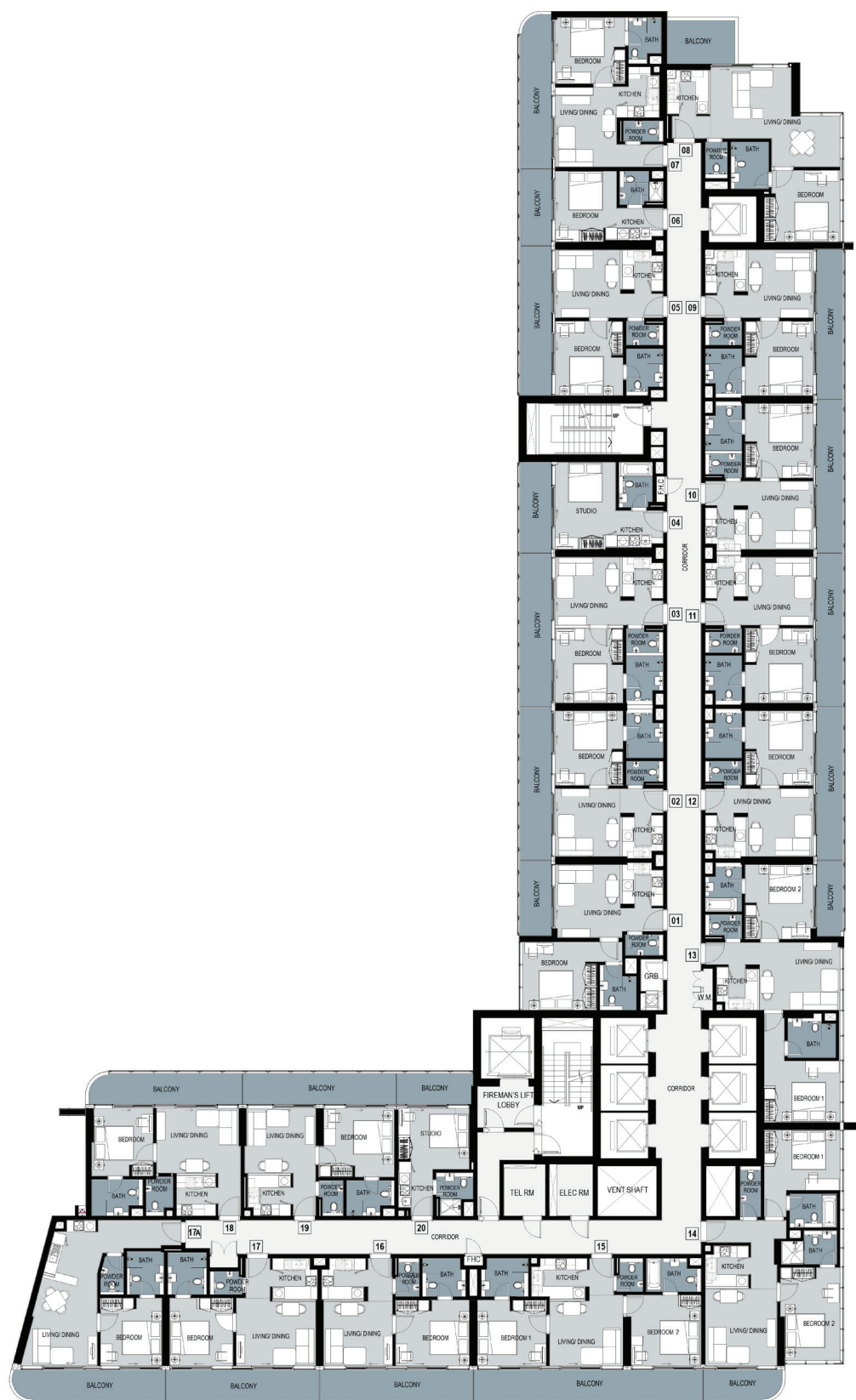
LEVEL: 8, 10, 15, 16, 18, 20, 23, 24, 25, 27



Disclaimer: All pictures, plans, layouts, information, data and details included in this brochure are indicative only and may change at any time up to the final 'as built' status in accordance with final designs of the project, regulatory approvals and planning permissions.

TYPICAL FLOOR PLAN

LEVEL: 3, 4, 5, 6, 7, 9, 11, 12, 13, 14, 17,
19, 21, 22, 26, 28, 29



Disclaimer: All pictures, plans, layouts, information, data and details included in this brochure are indicative only and may change at any time up to the final 'as built' status in accordance with final designs of the project, regulatory approvals and planning permissions.

LUXURY BY APPOINTMENT

CONTACT US AT ANY OF OUR OFFICES OR VISIT DAMACPROPERTIES.COM

UNITED ARAB EMIRATES

Dubai
Park Towers
Dubai International Financial Centre
Tel: 800-DAMAC (800-32622)
Email: dubai@damacgroup.com

DAMAC Hills Sales Centre
Sheikh Zayed bin Hamdan
Al Nahyan Street
Tel: 800-DAMAC (800-32622)
Email: dubai@damacgroup.com

DAMAC Hills Sales Centre
Golf Vedita
Townhouse TH2
Sheikh Zayed bin Hamdan
Al Nahyan Street
Tel: 800-DAMAC (800-32622)
Email: dubai@damacgroup.com

QATAR

Building 90, New Solta Area
Ali bin Abi Talib Street
Next to Omar bin Al Khattab Health Centre
Tel: +974 44 666 986
Fax: +974 44 554 576
Email: doha@damacgroup.com

KINGDOM OF SAUDI ARABIA

Riyadh
DAMAC Towers Riyadh
South Tower
Olaya District
King Fahd Road
PO Box 102460
Tel: +966 11 835 0300
Email: ksa@damacgroup.com

TURKEY

Levazım, Mah. Kuru Sk. Zorlu Centre No: 2
İc Kapi 347 Beşiktaş/İstanbul, Turkey
Tel: +90 212 892 0327
Fax: +90 212 890 7184
E-mail: turkey.office@damacgroup.com

LEBANON

Unit 1801, 18th Floor
DAMAC Tower
Omar Daouk Street
Mina El Hosn, Beirut Central District
Tel: +961 81 647 200
Email: beirut@damacgroup.com

JORDAN

Al Istithmar Street
Abdali Project
Amman
Opposite Abdali Mall Gate #1
Tel: +962 6 510 7000
Fax: +962 6 565 7896
E-mail: amman@damacgroup.com

UNITED KINGDOM

4th Floor, 100 Brompton Road
Opposite Harrods
Knightsbridge, London
SW3 1ER, United Kingdom
Tel: +44 (0) 207 590 8050
Email: sales@damactower.co.uk

CHINA

Shanghai
Room 803
8th Floor, Building 2
1266 West Nanjing Road
Jing'an District, Shanghai
China, 200040
Tel: +86 21 6086 1266



/DAMACPropertiesOfficial



/DAMACOfficial



/DAMACOfficial



DAMAC Properties



/DAMACOfficial

DAMAC

DAMACPROPERTIES.COM