

# MAR CASA



MARCASA.AE



The background is a dark blue gradient with a repeating geometric pattern of overlapping diamond shapes. The diamonds are formed by intersecting diagonal lines, creating a sense of depth and rhythm.

YOUR RHYTHM ... YOUR LIFE



---

## THE DEVELOPER



SHAPING THE URBAN REAL ESTATE  
LANDSCAPE OF DUBAI



MAR CASA



# ABOUT US

**FOUNDED TEAM IN  
2002**



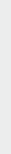
**350+  
ASSOCIATION WITH  
GLOBAL EXPERTS**

**AED 803.4 MILLION  
REVENUE IN 2022**



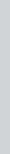
**AED 144.2 MILLION  
NET PROFIT IN 2022**

**DUBAI FOCUSED  
STRATEGY**



**DEVELOPMENT  
PORTFOLIO OF 25.5  
MILLION SQ.FT.**

**#1 DEVELOPER BY  
RESIDENTIAL SALES**



**24 RESIDENTIAL,  
7 COMMERCIAL, 4  
HOSPITALITY AND 1  
MIXED USED PROJECT**

MAR CASA



---

## VALUES THAT SET US APART



ENTERPRISING  
AND AGILE



ETHICAL AND  
TRANSPARENT



TRUSTWORTHY  
AND RELIABLE



QUALITY AND  
VALUE CONSCIOUS



COMMITTED TO THE  
TRANSFORMATION  
OF THE UAE



---

## OUR ACHIEVEMENTS

**AED 4.38**  
BILLION IN  
CAPITAL

**25.5M**  
SQ.FT. OF  
DEVELOPMENT

**4**  
HOSPITALITY  
PROJECTS

**2007**  
PUBLICLY LISTED IN DUBAI  
FINANCIAL MARKET

MAR CASA



# MAJOR DEVELOPMENTS

MIDTOWN



THE ATRIA



CENTRAL PARK



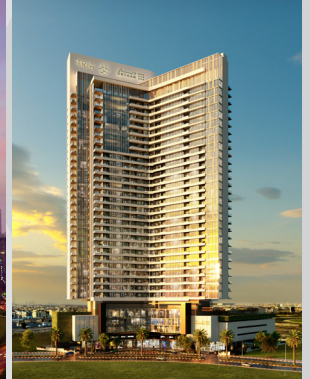
BELLA ROSE



REGALIA



TRIA



BY DEYAAR

MAR CASA

---

WHY CHOOSE DUBAI?



ONE OF THE WORLD'S FASTEST  
GROWING CITIES



MAR CASA

# A CITY OF OPPORTUNITIES AND EXPONENTIAL GROWTH GROWING REAL ESTATE MARKET

A 67% INCREASE IN THE NUMBER OF  
FOREIGN PROPERTY BUYERS IN 2022.

TOTAL PROPERTY SALE TRANSACTIONS  
GROWTH IN 2022 IS 59.5% - 97,252  
TRANSACTIONS.

FOR 2023, A PROJECTED MARKET  
GROWTH IS 46%, PROPERTY PRICES  
GROWTH - 10-15%.

MAR CASA



# A CITY OF OPPORTUNITIES AND EXPONENTIAL GROWTH SAFETY & QUALITY

DUBAI RANKS 7TH ON THE GLOBAL SAFE  
CITY INDEX BY NUMBEO.

DUBAI RANKS 49TH IN THE GLOBAL  
QUALITY OF LIFE INDEX BY NUMBEO.

MAR CASA

# WHY PEOPLE CHOOSE PROPERTIES IN DUBAI?

- ✓ HIGH-QUALITY LIFESTYLE.
- ✓ ECONOMIC GROWTH & STABILITY  
THE 5TH-BEST PERFORMING  
ECONOMY WORLDWIDE.
- ✓ TRANSPARENT REGULATED  
REAL ESTATE MARKET.
- ✓ COMPETITIVE PRICES AND  
RENTAL YIELDS.
- ✓ ZERO YEARLY PROPERTY TAXES.
- ✓ WORLD-CLASS CITY INFRASTRUCTURE  
AND CONNECTIVITY.

---

# LOCATION & NEIGHBOURHOOD



WHERE HERITAGE  
MEETS MODERNITY



MAR CASA



# TAKE PRIDE IN YOUR ADDRESS

MAR CASA IS STRATEGICALLY LOCATED AT DUBAI MARITIME CITY - THE WORLD'S FIRST CENTER DEDICATED TO THE ENTIRE MARITIME INDUSTRY, COMMERCE & TRADE.

DEVELOPED ACCORDING TO THE VISIONARY LEADERSHIP OF HIS HIGHNESS SHEIKH MOHAMMED BIN RASHID AL MAKTOUM.

THIS ICONIC 249-HECTARE MAN-MADE PENINSULA IS THE PERFECT COMBINATION OF LIVE, WORK AND PLAY DESTINATION WHICH INCLUDES RETAIL SPACES, RESIDENTIAL AREAS, OFFICE TOWERS, AND A PROMENADE.



MAR CASA

# LOCATION MAP

Mar Casa is perfectly connected to the old city as well as the financial centre of Dubai and the beautiful Jumeirah area. Dubai Downtown with its landmarks Dubai Mall and Burj Khalifa is only a few minutes drive away.

## Hotels:

1. Nikki Beach Resort & Spa Dubai
2. Mandarin Oriental Jumeira
3. Bulgari Resort
4. Four Seasons Resort Dubai (at Jumeirah Beach)
5. Four Seasons Hotel DIFC
6. Waldorf Astoria DIFC
7. Ritz Carlton (DIFC)
8. Armani Hotel Dubai
9. The Address Hotel Dubai

## Education:

1. New Academy School
2. Ambassador School
3. Zabeel High School
4. Dubai Music School
5. AlWasl University
6. Canadian University Dubai
7. Dubai Institute of Design and Innovation (DIDI)
8. London American City College
9. Learners University College
10. European University College

## Healthcare:

1. Dubai Healthcare City
2. International Modern Hospital
3. Iranian Hospital
4. Aster Clinic (Al Karama, Union Medical Centre)
5. Kimshealth – Al Rashidiyah Private Polyclinic

## Parks:

1. Dubai Creek Park
2. Zabeel Park
3. Dubai Garden Glow
4. Ras Al Khor Wild Life Sanctuary
5. Karama Park
6. Juggers Park

## Leisure, Malls & Art:

1. Jumeirah Beach
2. Dubai Mall
3. Mercato
4. BurJuman
5. Wafi Mall
6. Deira City Centre
7. Old Souk
8. Dubai Museum
9. Heritage Village
10. Etihad Museum

**10 minutes**  
to Sheikh Zayed Road

**15 minutes**  
to Dubai International Airport

**20 minutes**  
to Downtown Dubai

**20 minutes**  
to the Dubai Mall/Burj Khalifa

**10 minutes**  
to Jumeirah



MAR CASA



ENJOY THE PICTURE-POSTCARD  
SKYLINE AND LIVE IN  
THE HISTORICAL AREA OF PORT  
RASHID, WHERE IT ALL STARTED.



---

MAR CASA



YOUR RHYTHM ... YOUR LIFE



MAR CASA



# OVERVIEW

- A NEW 52-STOREY LANDMARK IN DUBAI MARITIME CITY.
- ICONIC ARCHITECTURE EMBODYING THE FLUIDITY OF OCEAN WAVES.
- EMOTIONAL LUXURY LIVING THAT PRIORITIZES RESIDENTS' WELLBEING AND HAPPINESS.
- A WIDE RANGE OF SPACIOUS AND ELEGANT RESIDENCES, INCLUDING 1, 2, 3 BEDROOM, DUPLEX, AND PENTHOUSE OPTIONS.



- THE BREATHTAKING SEA VIEWS FROM EVERY RESIDENCE.
- STATE-OF-THE-ART AMENITIES ARE DESIGNED TO BRING PEOPLE TOGETHER IN A FRIENDLY ATMOSPHERE, FOSTERING CONNECTIONS WITH LIKE-MINDED INDIVIDUALS.
- NATURE-INSPIRED INTERIOR DESIGN AND EXCEPTIONAL FINISHES.
- A SMOOTH AND EASY LIFE WITH INTEGRATED SMART HOME SOLUTIONS.

MAR CASA

---

## WHY MAR CASA?

PROSPECTIVE STRATEGIC DUBAI  
MARITIME CITY LOCATION FOR  
INVESTMENTS.

NATURE-INSPIRED DESIGN AND  
ARCHITECTURE, COMBINED TO  
OFFER THE ULTIMATE RETREAT  
FOR RESIDENTS.

SUSTAINABLE AND SMART  
CONSTRUCTION SOLUTIONS.

UNINTERRUPTED SEA VIEWS, THE  
SOOTHING SOUNDS OF WATER,  
AND SERENITY.

EXPERIENCES DESIGNED TO  
BALANCE WORK AND LEISURE,  
PROMOTE EASY COMMUNICATION,  
AND CREATE LASTING MEMORIES.

CUTTING-EDGE TECHNOLOGY  
ALLOWING RESIDENTS TO  
EFFORTLESSLY MANAGE THEIR  
LIVING SPACES.

MAR CASA

# COMPOSE THE LIFE YOU WANT TO LIVE

MAR CASA IS NOT JUST A RESIDENCE  
BUT A GATEWAY TO CRAFTING A LIFE  
THAT IS TRULY YOURS.

BREATHING PLACE WHERE EVERY  
DETAIL HAS BEEN TAILORED TO THE  
UNIQUE NEEDS AND DESIRES OF  
EACH RESIDENT.

BREATHTAKING NATURAL  
SCENERY AND A VARIETY OF HIGHLY  
CURATED AMENITIES.



MAR CASA





MAR CASA





MAR CASA





---

MAR CASA



CURATED EXPERIENCES



MAR CASA

# HIGH-END AMENITIES

## FITNESS AND RECREATIONAL AMENITIES

- THE INFINITY SAND POOL
- THE INFINITY SKY POOL
- SPACIOUS GYM WITH YOGA ROOM
- SHOWER AND CHANGING ROOMS
- MULTIPURPOSE SPORTS COURT
- MULTIPURPOSE LAWN
- WELLNESS AMENITIES
- SPA HEALTH CLUB
- SAUNA AND STEAM ROOMS



## SOCIAL AMENITIES

- GRAND AND WELCOMING LOBBY
- RESIDENTS LOUNGE - COWORKING ZONE
- RESIDENTS LOUNGE - GAMES ZONE
- RESIDENTS LOUNGE - JUICE BAR
- RESIDENTS LOUNGE - OUTDOOR TERRACE
- MULTIPURPOSE HALL

## CHILDREN'S AMENITIES

- KIDS POOL
- KIDS SPLASH PAD
- KIDS OUTDOOR PLAYGROUND KIDS CLUB





## AMENITIES MAP



# BEACH EXPERIENCE

THE SAND INFINITY POOL WITH  
CABANAS OFFERS A BEACH-LIKE  
EXPERIENCE WITH UNFORGETTABLE  
VIEWS OF THE ARABIAN GULF.







## SPA

A PLACE OF SERENITY AND RESPITE. WHENEVER YOU WANT TO TAKE A BREAK FROM ACTIVE LIFE, INDULGE YOURSELF AT THE MAR CASA SPA, INSPIRED BY THE SEA, A PLACE OF SERENITY AND RESPITE.

A group of children are playing tug-of-war outdoors. A young girl in a light blue dress is in the center, pulling with effort. To her left, a boy in a purple shirt and another child in a red shirt are also pulling. The background is a soft-focus outdoor setting with trees and a bright sky. A semi-transparent dark box with white text is in the upper right corner.

## KIDS AREA

GIVE YOUR CHILDREN THE GIFT  
OF A HAPPY, SAFE CHILDHOOD.  
MAR CASA FEATURES EXCEPTIONAL  
INDOOR AND OUTDOOR PLAY  
AREAS THAT ARE PERFECT FOR  
CHILDREN OF ALL AGES.



## LOBBY

THE LOBBY CAPTURES THE GRACEFUL MOVEMENT AND FLUIDITY OF WAVES AND WATER TO CREATE AN UNFORGETTABLE "WOW!" MOMENT UPON ARRIVAL.







## GYM

STATE-OF-THE-ART FITNESS  
FACILITIES, FEATURING THE  
LATEST EQUIPMENT.



# SPORTS COURT

OUTDOOR MULTIFUNCTIONAL  
SPORT COURT NESTLED IN THE  
LAP OF PLUSH GREENERY AND  
SEASCAPE VISTAS.







## ALFRESCO DINING

OUTDOOR LIVING. OUTDOOR  
LEISURE ZONES, INCLUDING THE  
BBQ AREA, MULTIPURPOSE LAWN,  
AND ALFRESCO SEATING.



## LOUNGE

EXPERIENCE WORTH SHARING! TAKE PRIDE IN INVITING FRIENDS TO THE VIBRANT ENERGY OF THE RESIDENTS' LOUNGE.



---

MAR CASA



STATE-OF-THE-ART INTERIORS



MAR CASA



# DESIGNED TO MEET THE NEEDS OF MODERN LIVING

- SEASCAPE VISTAS
- ABUNDANCE OF NATURAL LIGHT
- ADVANCED HOME AUTOMATION  
SYSTEMS
- HIGH-END KITCHENS
- CAREFULLY SELECTED APPLIANCES



MAR CASA



---

## INTERIOR FINISHES

UNIT	HOME AUTOMATION FACILITIES
WARDROBES & DOOR	HIGH-GRADE LAMINATE FINISH
KITCHEN	BRANDED KITCHEN APPLIANCES
SANITARY	BRANDED SANITARYWARE AND ACCESSORIES
TILE	STONE OR PORCELAIN TILES DEPENDING ON THE UNIT TYPE
WALL & CEILING	PAINTED FINISH



















# RESIDENTIAL TYPOLOGY

UNIT TYPE	SIZE SQFT
<b>1 BEDROOM</b>	740-1265
<b>2 BEDROOM</b>	
I. 2 BED	1100-1390
II. 2 BED SUITE	1525-1555
III. 2 BED EXEC. DUPLEX	2255-2285
V. ROYAL 2 BED	3215-3275
<b>3 BEDROOM</b>	
I. 3 BED	1850-2185
II. 3 BED DUPLEX	2270-2310
III. ROYAL 3 BED	4035-4170
<b>PENTHOUSE</b>	
I. PENTHOUSE	2800-3080
II. ROYAL PENTHOUSE	5830

---

MAR CASA



## UNIT TYPES AND LAYOUTS



MAR CASA



# 1 BEDROOM APARTMENT

TOTAL 771 SQFT / TYPE 1BR-01

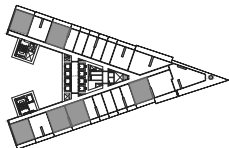
INTERIOR AREA / 650 sq.ft.

BALCONY AREA / 121 sq.ft.

NET AREA / 771 sq.ft.

## KEY PLAN

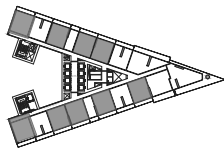
Sea View



Sea View & Dubai Skyline

Floors / 1st to 7th

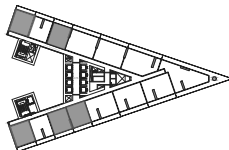
Sea View



Sea View & Dubai Skyline

Floors / 8th to 10th

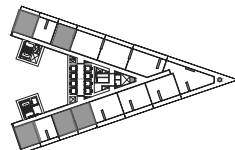
Sea View



Sea View & Dubai Skyline

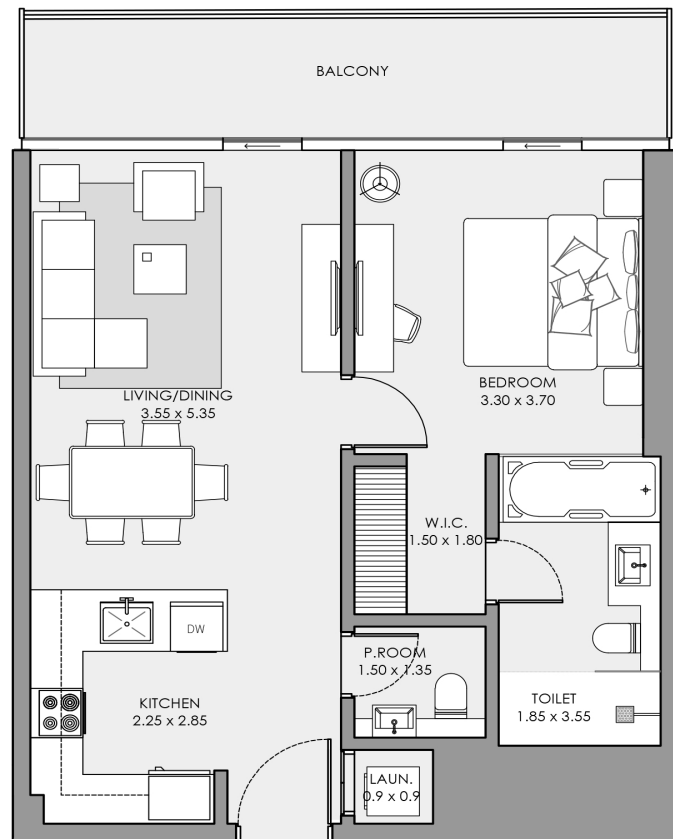
Floors / 11th to 19th

Sea View



Sea View & Dubai Skyline

Floors / 20th to 25th



# 1 BEDROOM APARTMENT

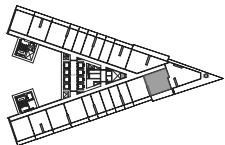
TOTAL 906 SQFT / TYPE 1BR-03

INTERIOR AREA / 750 sq.ft.

BALCONY AREA / 156 sq.ft.

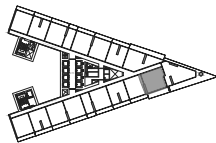
NET AREA / 906 sq.ft.

## KEY PLAN



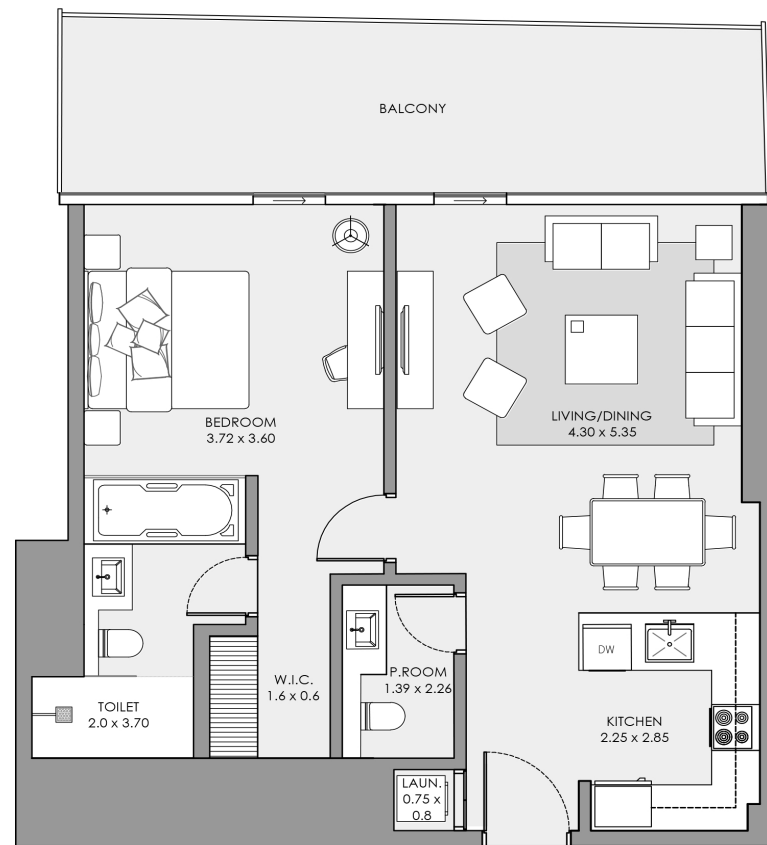
Sea View & Dubai Skyline

Floors / 1st to 7th



Sea View & Dubai Skyline

Floors / 8th to 10th



All pictures, plans, layouts, information, data and details included in this brochure are indicative only and may change at any time in accordance with the final designs of the project, regulatory approvals and planning permissions.



# 1 BEDROOM APARTMENT

TOTAL 1,181 SQFT / TYPE 1BR-WITH STUDY

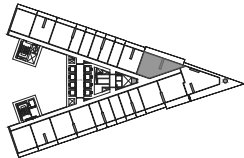
INTERIOR AREA / 925 sq.ft.

BALCONY AREA / 256 sq.ft.

NET AREA / 1,181 sq.ft.

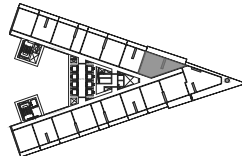
## KEY PLAN

Sea View

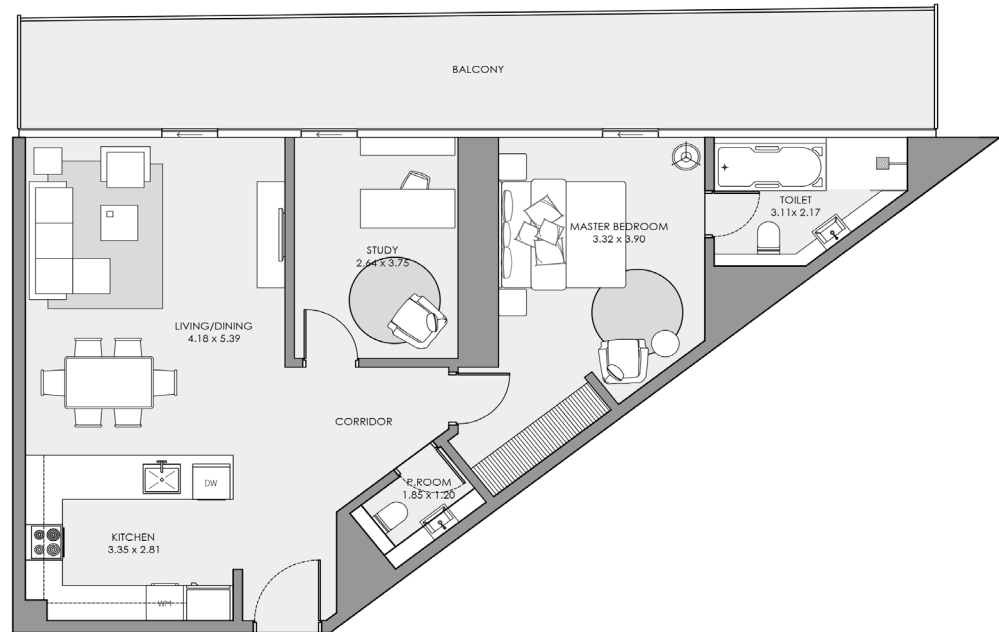


Floors / 1st to 7th

Sea View



Floors / 8th to 10th



# 2 BEDROOM APARTMENT

TOTAL 1,151 SQFT / TYPE 2BR-01

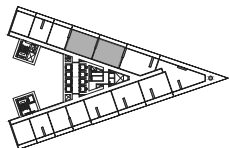
INTERIOR AREA / 970 sq.ft.

BALCONY AREA / 181 sq.ft.

NET AREA / 1,151 sq.ft.

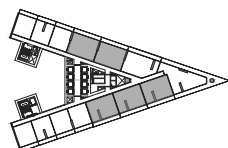
## KEY PLAN

Sea View



Floors / 11th to 19th

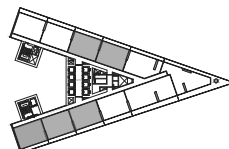
Sea View



Sea View & Dubai Skyline

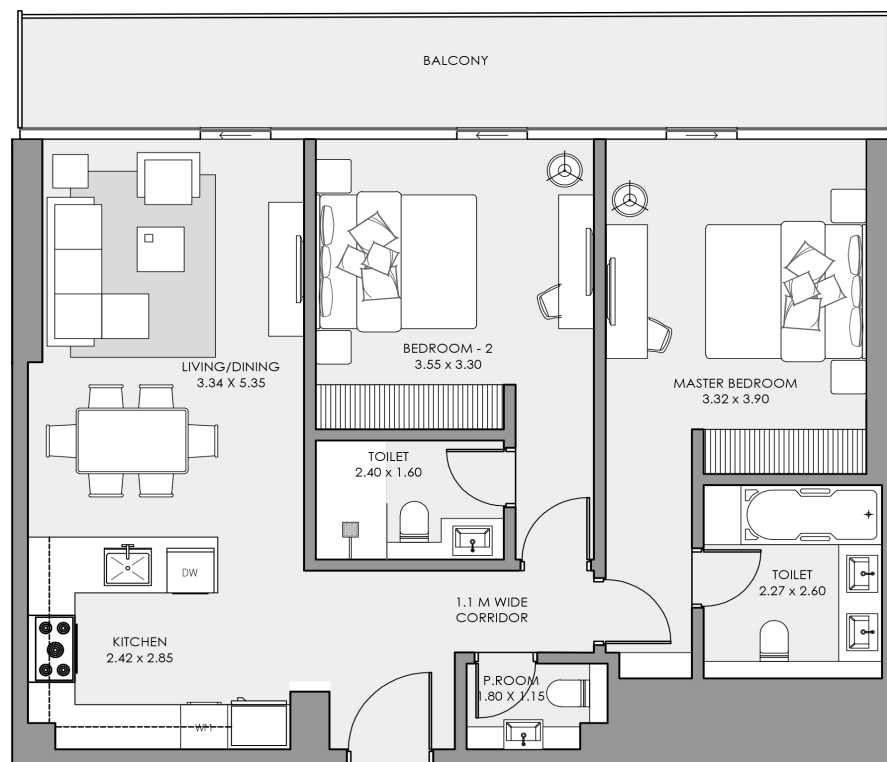
Floors / 20th to 25th

Sea View



Sea View & Dubai Skyline

Floors / 26th to 37th



All pictures, plans, layouts, information, data and details included in this brochure are indicative only and may change at any time in accordance with the final designs of the project, regulatory approvals and planning permissions.



# 2 BEDROOM APARTMENT

TOTAL 1,150 SQFT / TYPE 2BR-02A

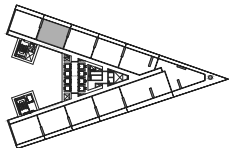
INTERIOR AREA / 970 sq.ft.

BALCONY AREA / 180 sq.ft.

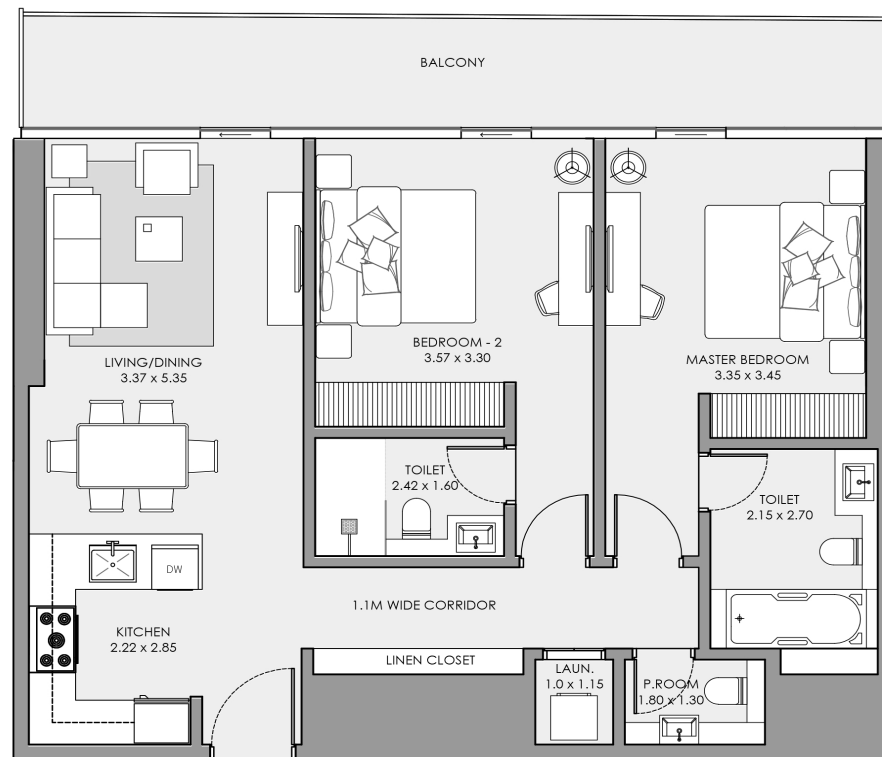
NET AREA / 1,150 sq.ft.

## KEY PLAN

Sea View



Floors / 26th to 37th



All pictures, plans, layouts, information, data and details included in this brochure are indicative only and may change at any time in accordance with the final designs of the project, regulatory approvals and planning permissions.

# 2 BEDROOM APARTMENT

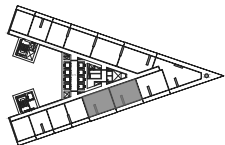
TOTAL 1,157 SQFT / TYPE 2BR-02

INTERIOR AREA / 970 sq.ft.

BALCONY AREA / 187 sq.ft.

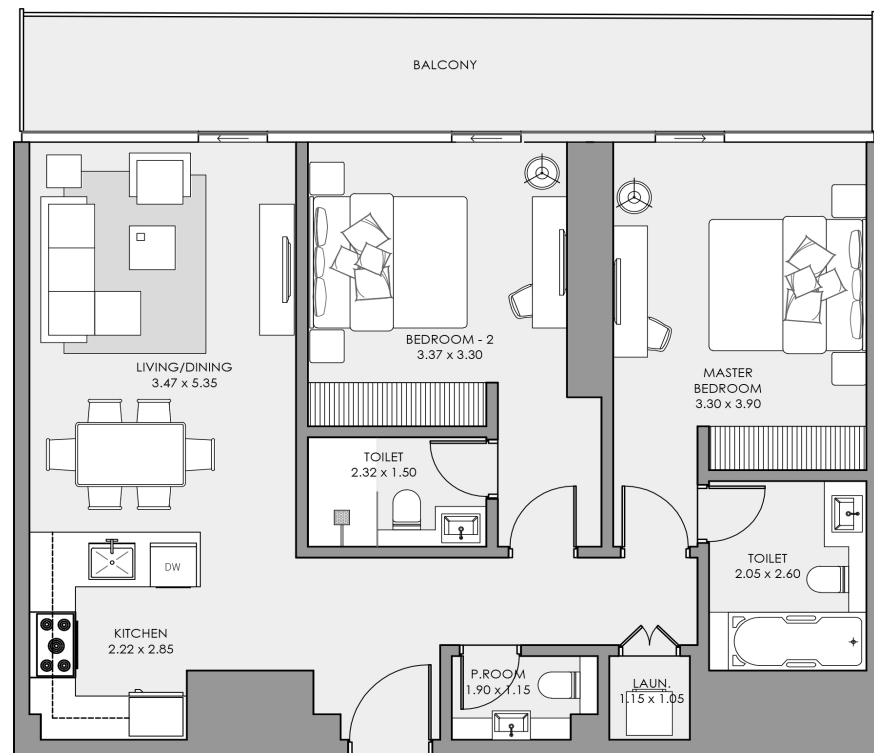
NET AREA / 1,157 sq.ft.

## KEY PLAN



Sea View & Dubai Skyline

Floors / 11th to 19th



All pictures, plans, layouts, information, data and details included in this brochure are indicative only and may change at any time in accordance with the final designs of the project, regulatory approvals and planning permissions.

# 2 BEDROOM APARTMENT

TOTAL 1,312 SQFT / TYPE 2BR-04

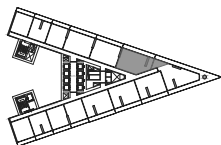
INTERIOR AREA / 1,075 sq.ft.

BALCONY AREA / 237 sq.ft.

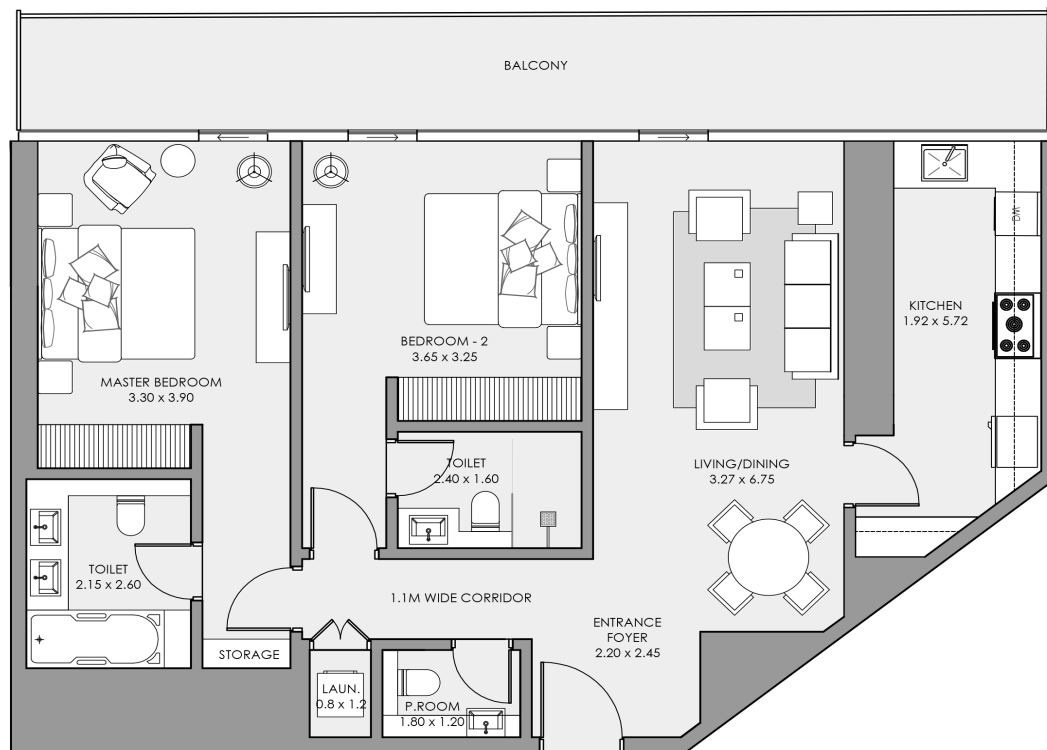
NET AREA / 1,312 sq.ft.

## KEY PLAN

Sea View



Floors / 11th to 19th



All pictures, plans, layouts, information, data and details included in this brochure are indicative only and may change at any time in accordance with the final designs of the project, regulatory approvals and planning permissions.



# 2 BEDROOM APARTMENT

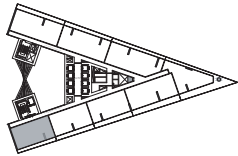
TOTAL 1,550 SQFT / TYPE 2BR-SUITE B

INTERIOR AREA / 1,320 sq.ft.

BALCONY AREA / 230 sq.ft.

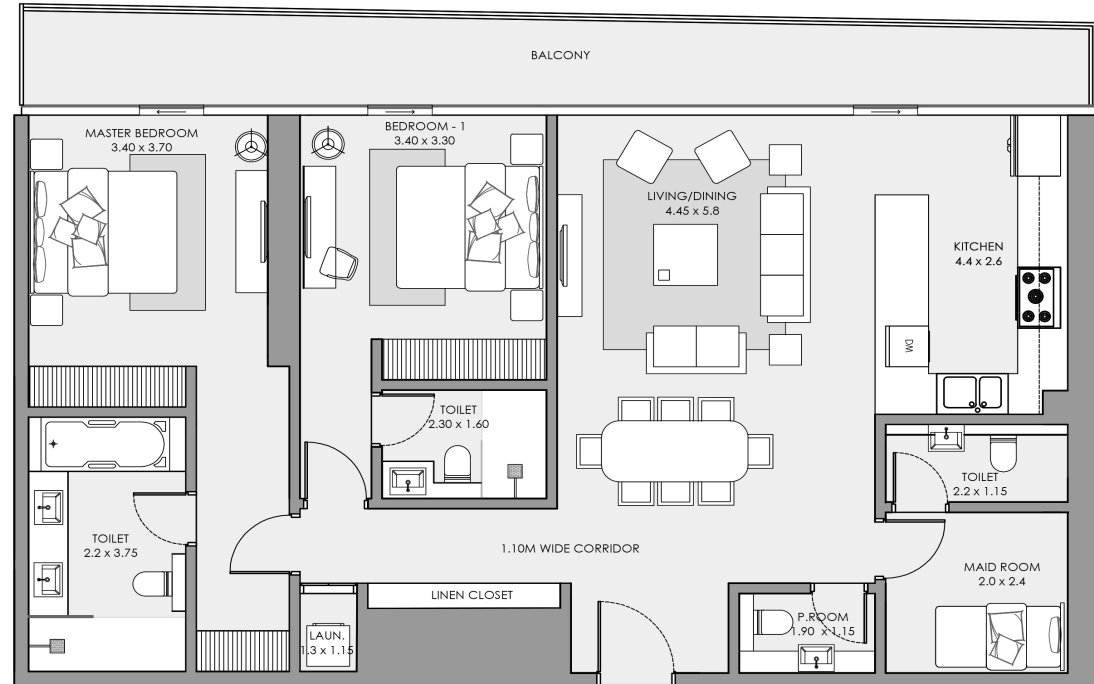
NET AREA / 1,550 sq.ft.

## KEY PLAN



Sea View & Dubai Skyline

Floors / 38th to 41st



All pictures, plans, layouts, information, data and details included in this brochure are indicative only and may change at any time in accordance with the final designs of the project, regulatory approvals and planning permissions.

# 2 BEDROOM APARTMENT

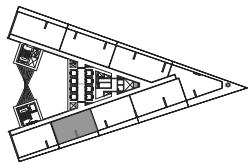
TOTAL 1,560 SQFT / TYPE 2BR-SUITE C

INTERIOR AREA / 1,315 sq.ft.

BALCONY AREA / 245 sq.ft.

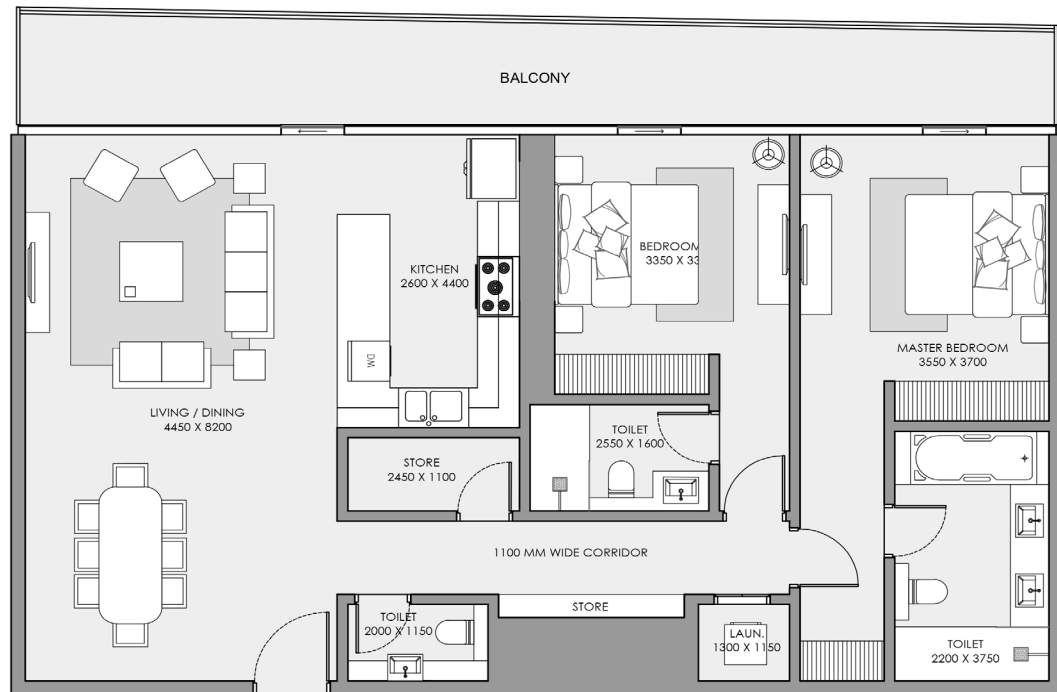
NET AREA / 1,560 sq.ft.

## KEY PLAN



Sea View & Dubai Skyline

Floors / 38th to 41st



All pictures, plans, layouts, information, data and details included in this brochure are indicative only and may change at any time in accordance with the final designs of the project, regulatory approvals and planning permissions.

# 2 BEDROOM APARTMENT

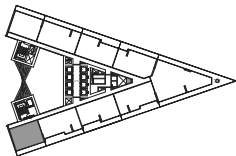
TOTAL 2,270 SQFT / TYPE 2BR-EXECUTIVE-DUPLEX

INTERIOR AREA / 1,885 sq.ft.

BALCONY AREA / 385 sq.ft.

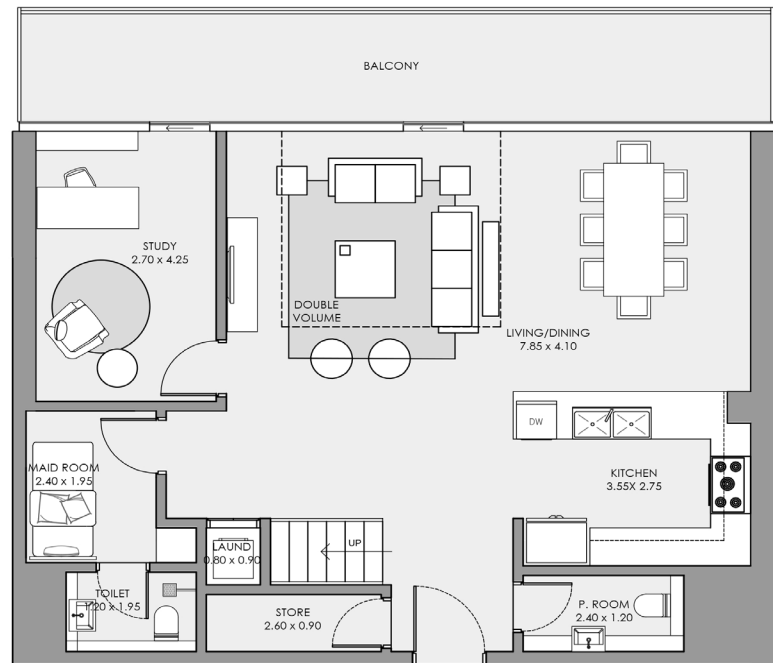
NET AREA / 2,270 sq.ft.

## KEY PLAN



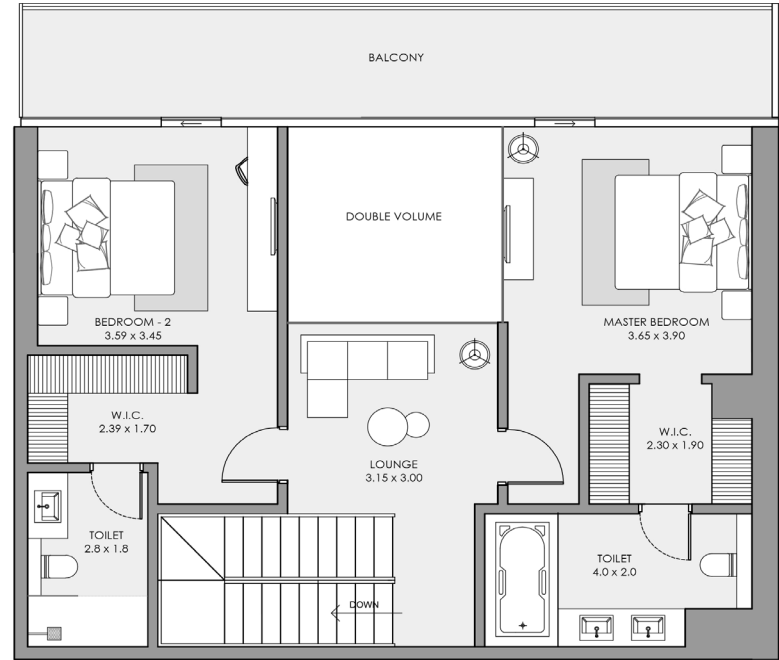
Sea View & Dubai Skyline

Floors / 42nd to 45th



LOWER LEVEL





## UPPER LEVEL

All pictures, plans, layouts, information, data and details included in this brochure are indicative only and may change at any time in accordance with the final designs of the project, regulatory approvals and planning permissions.

# 2 BEDROOM APARTMENT

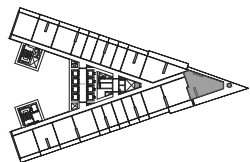
TOTAL 3,261 SQFT / TYPE ROYAL 2BR

INTERIOR AREA / 1,785 sq.ft.

BALCONY AREA / 1,476 sq.ft.

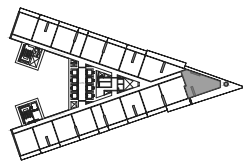
NET AREA / 3,261 sq.ft.

## KEY PLAN



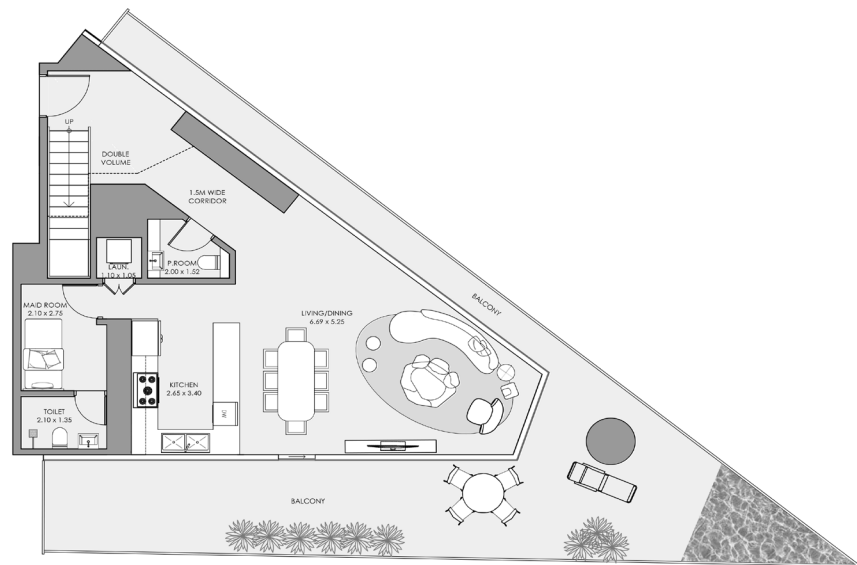
Floors / 1st to 7th

Panoramic  
Sea View

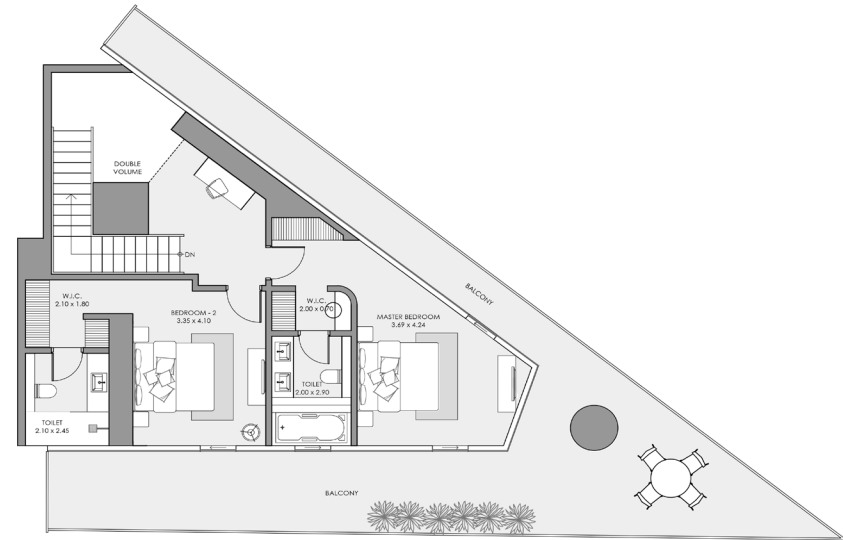


Floors / 8th to 10th

Panoramic  
Sea View



LOWER LEVEL



## UPPER LEVEL



# 3 BEDROOM APARTMENT

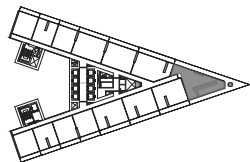
TOTAL 4,100 SQFT / TYPE ROYAL 3BR-02

INTERIOR AREA / 2,400 sq.ft.

BALCONY AREA / 1,700 sq.ft.

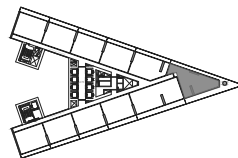
NET AREA / 4,100 sq.ft.

## KEY PLAN



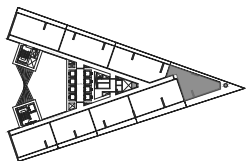
Panoramic  
Sea View

Floors / 20th to 25th



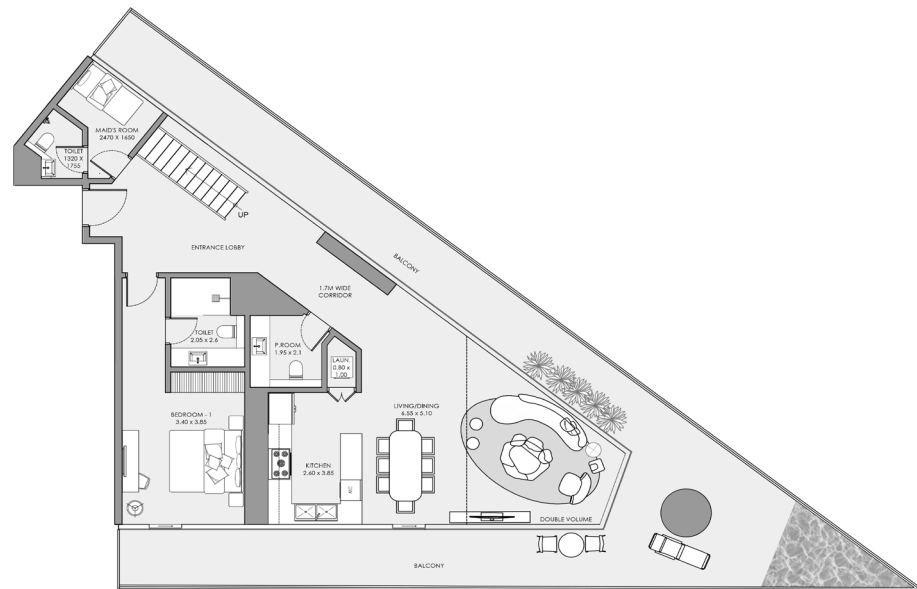
Panoramic  
Sea View

Floors / 26th to 37th

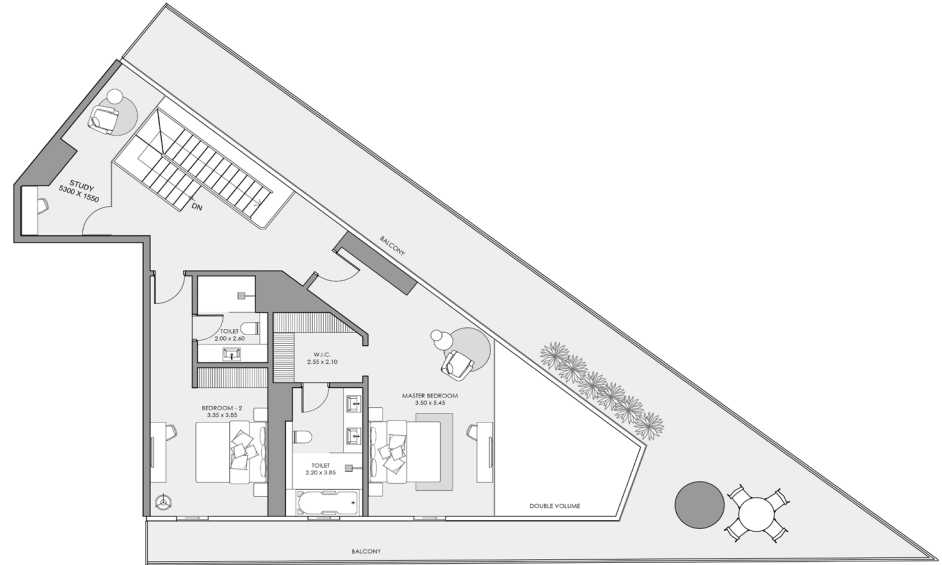


Panoramic  
Sea View

Floors / 38th to 41st



LOWER LEVEL



**UPPER LEVEL**

# 3 BEDROOM APARTMENT

TOTAL 2,100 SQFT / TYPE 3BR-04

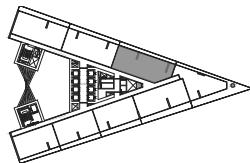
INTERIOR AREA / 1,765 sq.ft.

BALCONY AREA / 335 sq.ft.

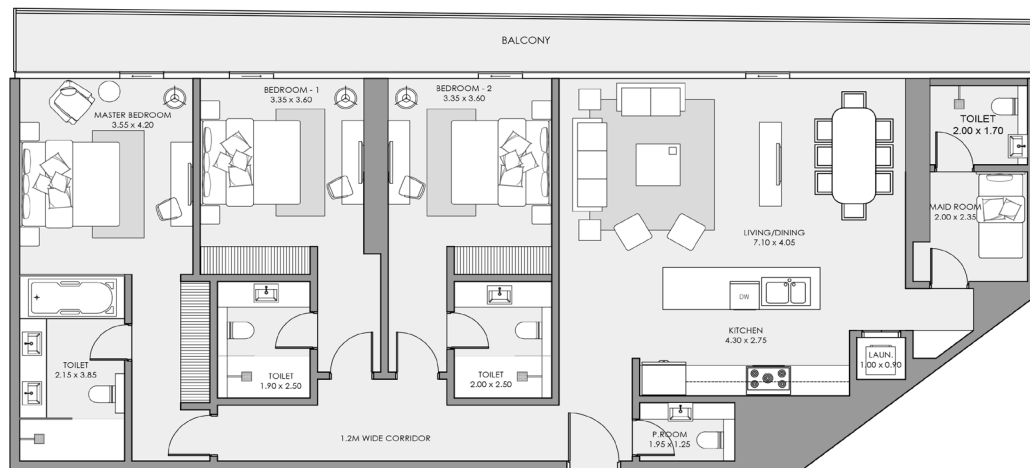
NET AREA / 2,100 sq.ft.

## KEY PLAN

Sea View



Floors / 38th to 41st





# 3 BEDROOM APARTMENT

TOTAL 2,295 SQFT / TYPE 3BR-DUPLEX

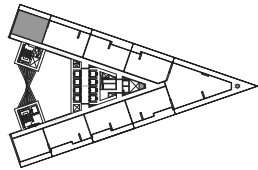
INTERIOR AREA / 1,970 sq.ft.

BALCONY AREA / 325 sq.ft.

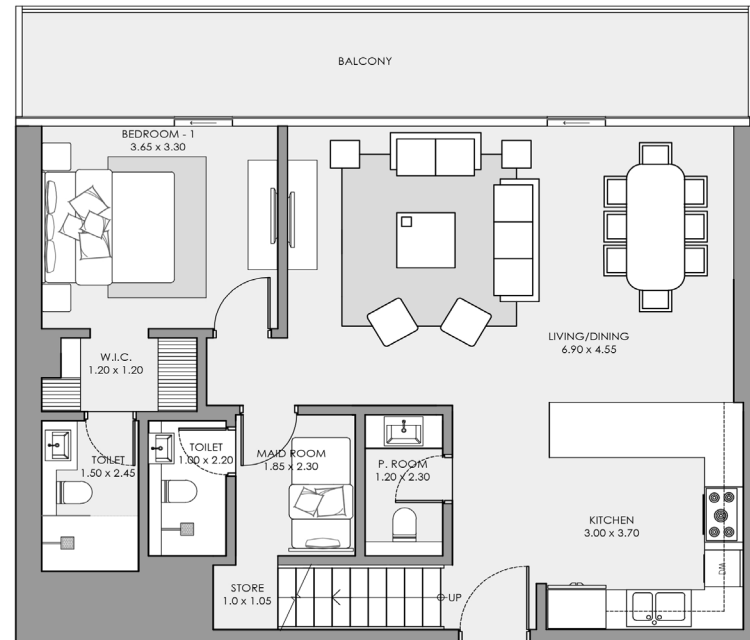
NET AREA / 2,295 sq.ft.

## KEY PLAN

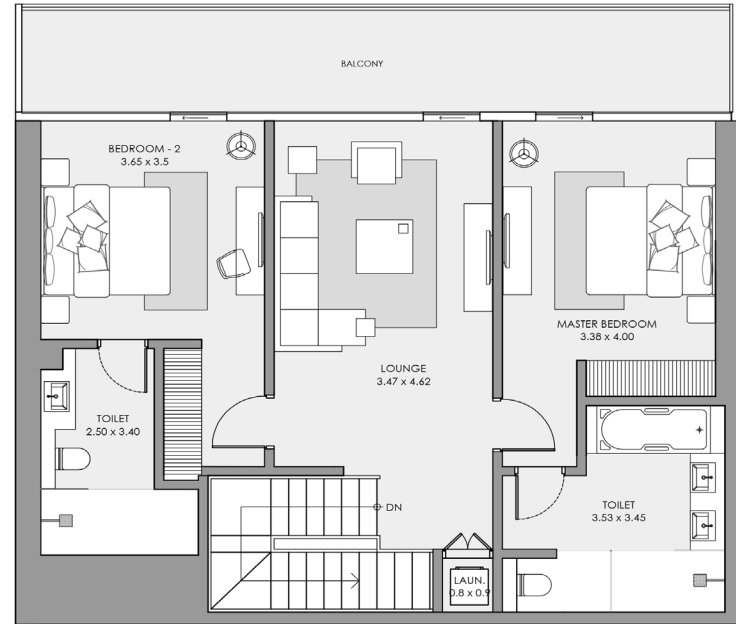
Sea View



Floors / 42nd to 45th



LOWER LEVEL



**UPPER LEVEL**

# 3 BEDROOM APARTMENT

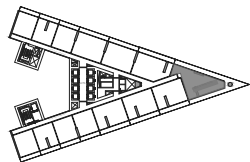
TOTAL 4,100 SQFT / TYPE ROYAL 3BR-02

INTERIOR AREA / 2,400 sq.ft.

BALCONY AREA / 1,700 sq.ft.

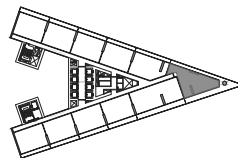
NET AREA / 4,100 sq.ft.

## KEY PLAN



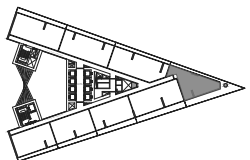
Panoramic  
Sea View

Floors / 20th to 25th



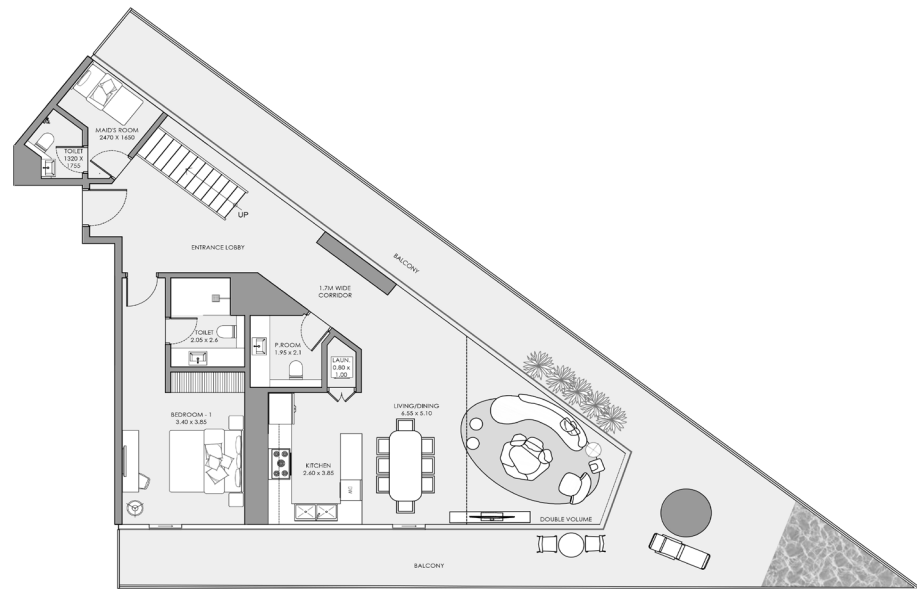
Panoramic  
Sea View

Floors / 26th to 37th



Panoramic  
Sea View

Floors / 38th to 41st



LOWER LEVEL



# 4 BEDROOM PENTHOUSE

TOTAL 2,975 SQFT / TYPE PH-02

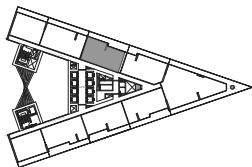
INTERIOR AREA / 2,330 sq.ft.

BALCONY AREA / 645 sq.ft.

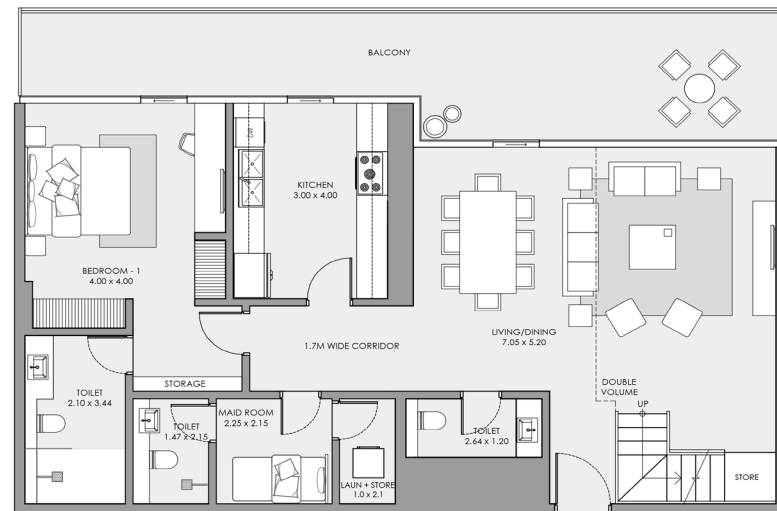
NET AREA / 2,975 sq.ft.

## KEY PLAN

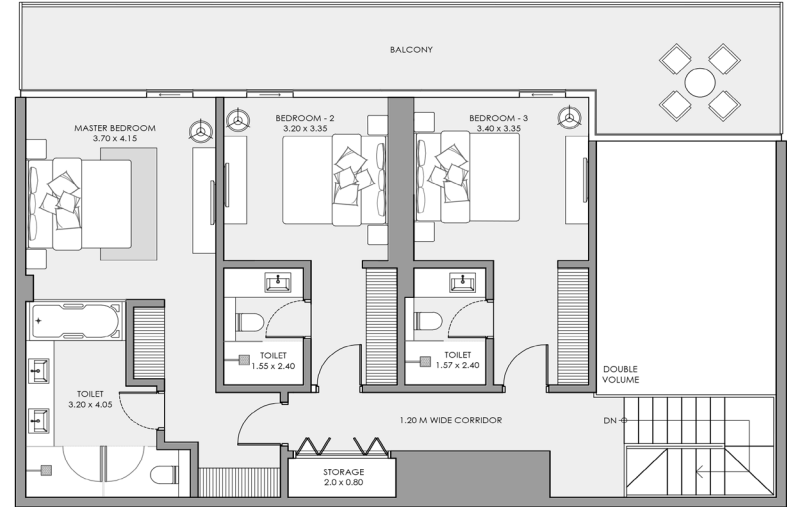
Sea View



Floors / 42nd to 45th



LOWER LEVEL



**UPPER LEVEL**

# 3 BEDROOM PENTHOUSE

TOTAL 3,035 SQFT / TYPE PH-03

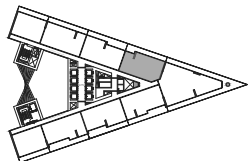
INTERIOR AREA / 2,370 sq.ft.

BALCONY AREA / 665 sq.ft.

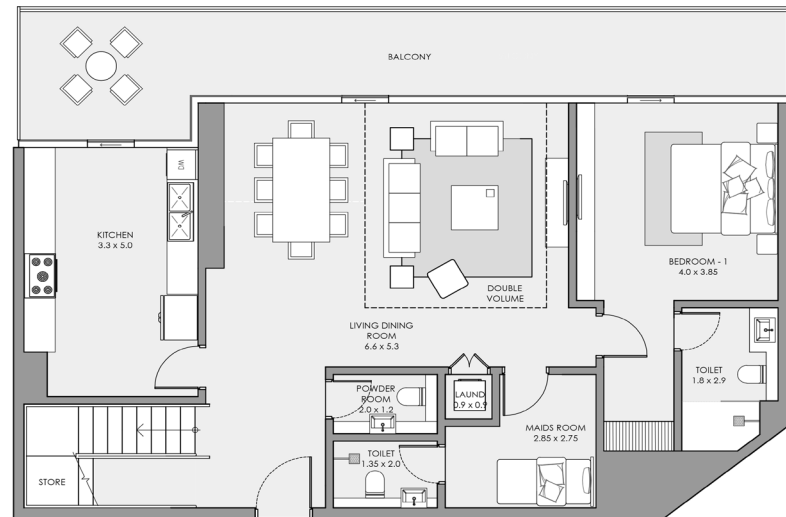
NET AREA / 3,035 sq.ft.

## KEY PLAN

Sea View

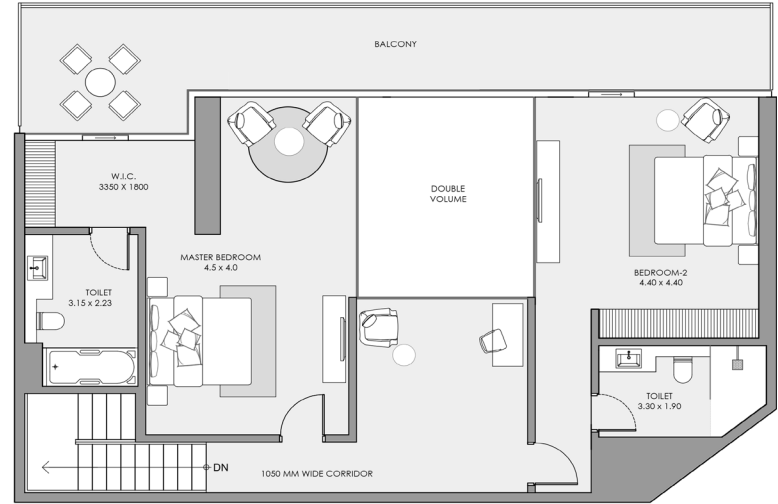


Floors / 42nd to 45th



LOWER LEVEL





**UPPER LEVEL**

# 3 BEDROOM PENTHOUSE

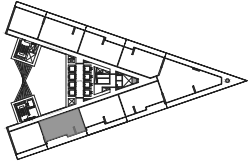
TOTAL 2,915 SQFT / TYPE PH-04

INTERIOR AREA / 2,330 sq.ft.

BALCONY AREA / 585 sq.ft.

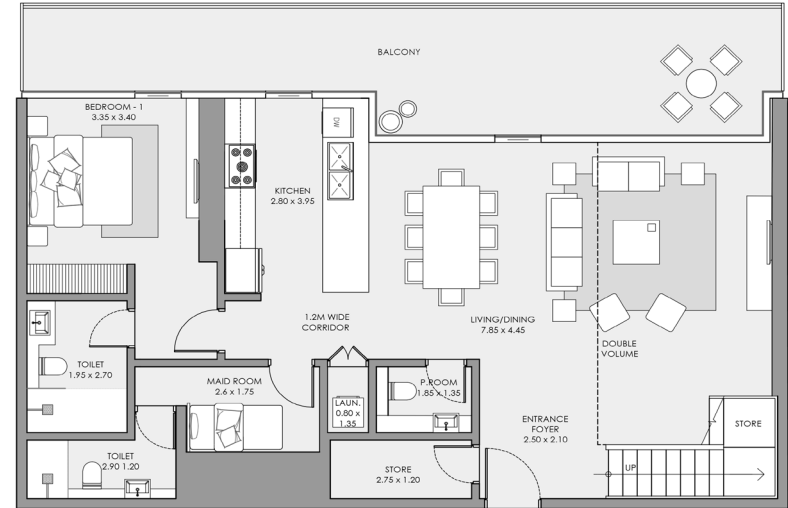
NET AREA / 2,915 sq.ft.

## KEY PLAN

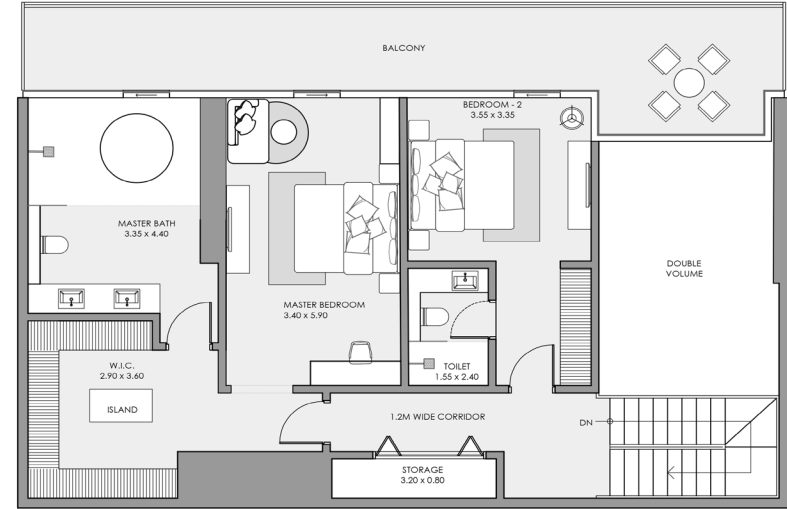


Sea View and Dubai Skyline

Floors / 42nd to 45th



LOWER LEVEL



**UPPER LEVEL**



# 4 BEDROOM PENTHOUSE

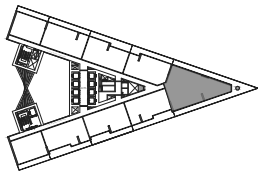
TOTAL 5,830 SQFT / TYPE ROYAL PENTHOUSE

INTERIOR AREA / 3,780 sq.ft.

BALCONY AREA / 2,050 sq.ft.

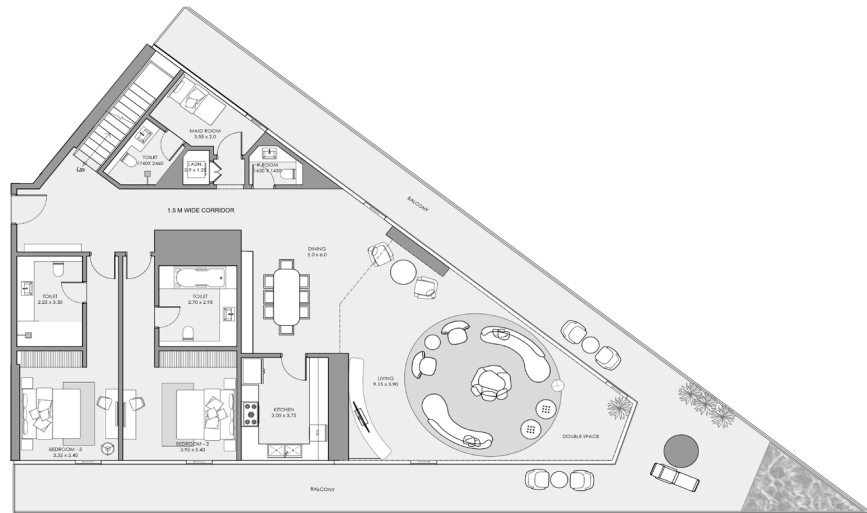
NET AREA / 5,830 sq.ft.

## KEY PLAN

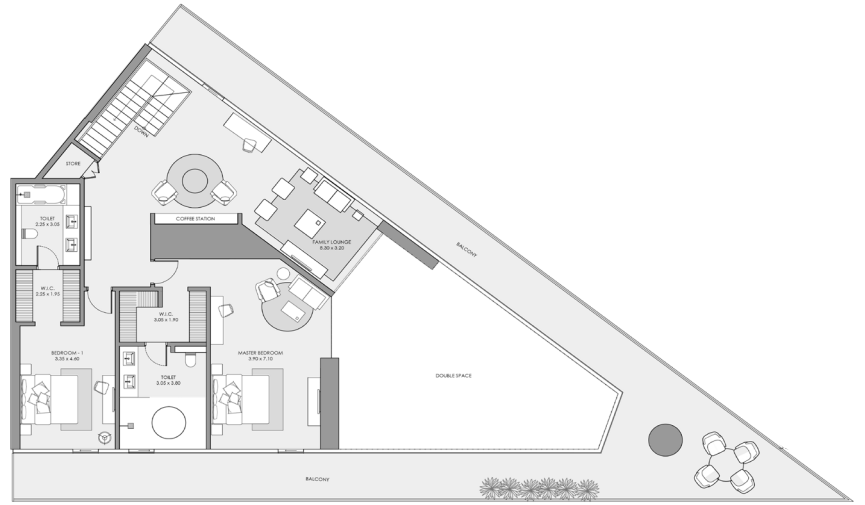


Panoramic  
Sea View

Floors / 42nd to 45th



LOWER LEVEL



## UPPER LEVEL

---

## PRICING AND PLANS



CHOOSE YOUR RHYTHM,  
LIVE YOUR LIFE



MAR CASA

---

## STARTING PRICE

### 1 BEDROOM

STARTING PRICE:

**AED1,283,986**

### 2 BEDROOM

STARTING PRICE:

**AED1,865,383**

### 3 BEDROOM

STARTING PRICE:

**AED2,904,382**

### PENTHOUSE

STARTING PRICE:

**AED5,120,000**

MAR CASA



## PAYMENT PLAN

	BOOKING	1ST INSTALLMENT	2ND INSTALLMENT	3RD INSTALLMENT	4TH INSTALLMENT	5TH INSTALLMENT	6TH INSTALLMENT	7TH INSTALLMENT	ON HANDOVER	POST- HANDOVER
		SEP-23	FEB-24	AUG-24	JAN-25	JUL-25	DEC-25	MAY-26	OCT-26	
	12%	8%	8%	8%	8%	8%	8%	8%	8%	24%
ON BOOKING		AFTER 6 MONTHS FROM PURCHASE DATE	AFTER 11 MONTHS FROM PURCHASE DATE	AFTER 17 MONTHS FROM PURCHASE DATE	AFTER 22 MONTHS FROM PURCHASE DATE	AFTER 28 MONTHS FROM PURCHASE DATE	AFTER 33 MONTHS FROM PURCHASE DATE	AFTER 38 MONTHS FROM PURCHASE DATE		WITHIN 24 MONTHS AFTER HANDOVER (QUARTERLY)

MAR CASA

---

## OPPORTUNITIES FOR YOU

**LAUNCH OFFER  
PRICE**

**100% DLD FEES  
COVERED BY THE  
DEVELOPER\***

\*LAUNCH OFFER

MAR CASA

---

800-DEYAAR  
DEYAAR.COM  
MARCASA.AE



MAR CASA