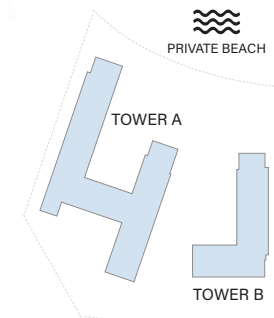




# ELLINGTON COVE I

FLOOR PLAN





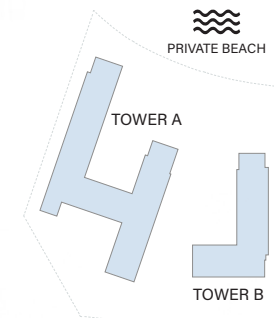
## GROUND FLOOR TYPICAL PLAN

- 1 - Bedroom
- 2 - Bedroom
- 2 - Bedroom + S
- 3 - Bedroom
- 3 - Bedroom  
Deluxe

**Disclaimer:** All drawings and dimensions of this typical floor plan are approximate. This typical floor level plan and units numbering are provisional. The seller, master developer, and/or any other relevant authorities may amend, change, and/or designate a different number to the units. The final draft of the typical floor plan shall be available on signing the unit sale and purchase agreement.



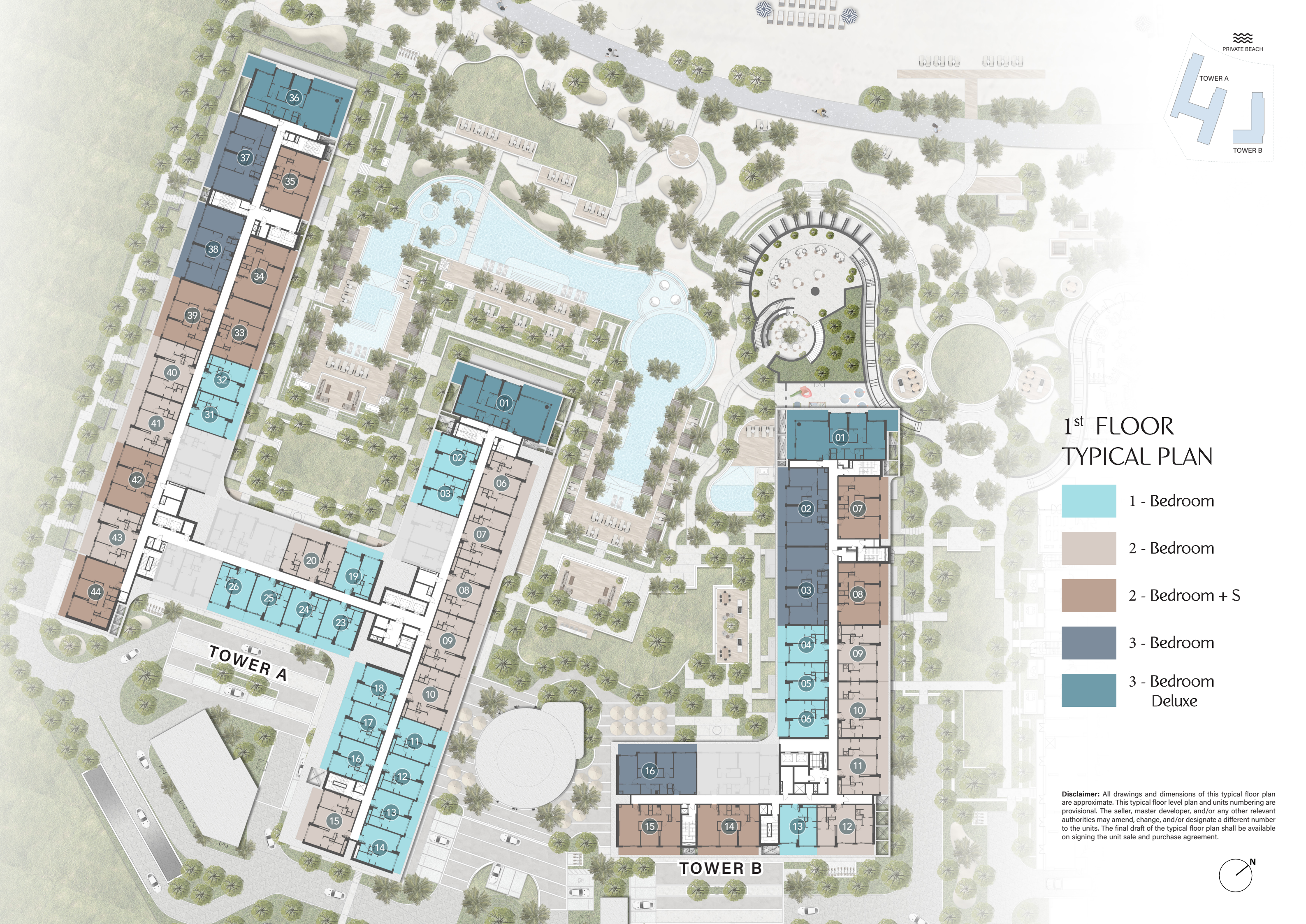




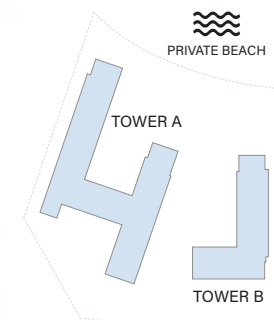
# 1<sup>st</sup> FLOOR TYPICAL PLAN

- 1 - Bedroom
- 2 - Bedroom
- 2 - Bedroom + S
- 3 - Bedroom
- 3 - Bedroom Deluxe

**Disclaimer:** All drawings and dimensions of this typical floor plan are approximate. This typical floor level plan and units numbering are provisional. The seller, master developer, and/or any other relevant authorities may amend, change, and/or designate a different number to the units. The final draft of the typical floor plan shall be available on signing the unit sale and purchase agreement.



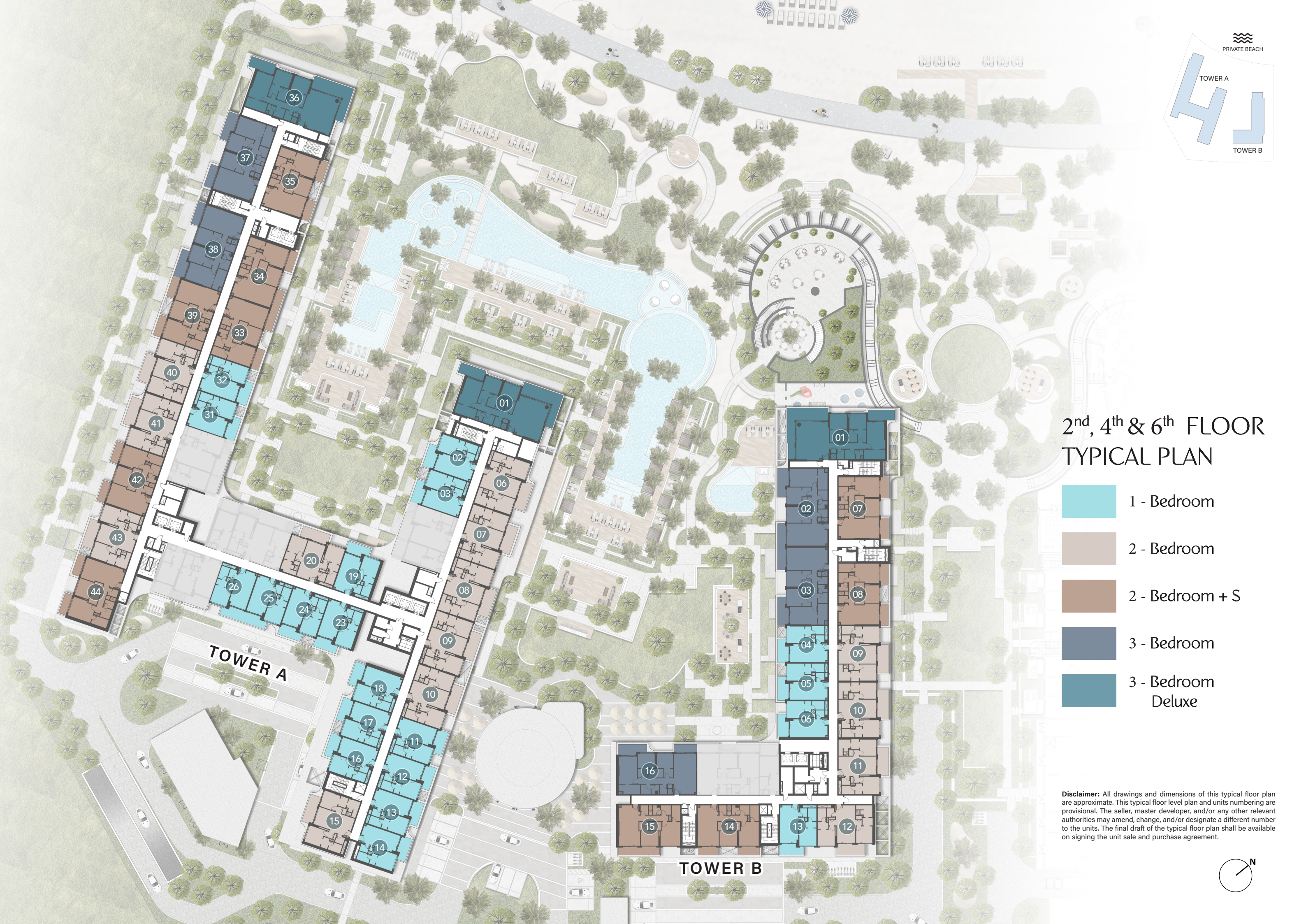




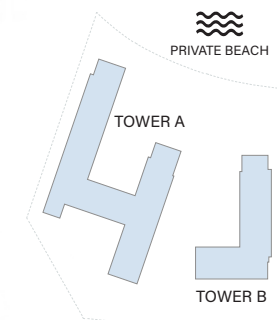
## 2<sup>nd</sup>, 4<sup>th</sup> & 6<sup>th</sup> FLOOR TYPICAL PLAN

- 1 - Bedroom
- 2 - Bedroom
- 2 - Bedroom + S
- 3 - Bedroom
- 3 - Bedroom  
Deluxe

**Disclaimer:** All drawings and dimensions of this typical floor plan are approximate. This typical floor level plan and units numbering are provisional. The seller, master developer, and/or any other relevant authorities may amend, change, and/or designate a different number to the units. The final draft of the typical floor plan shall be available on signing the unit sale and purchase agreement.



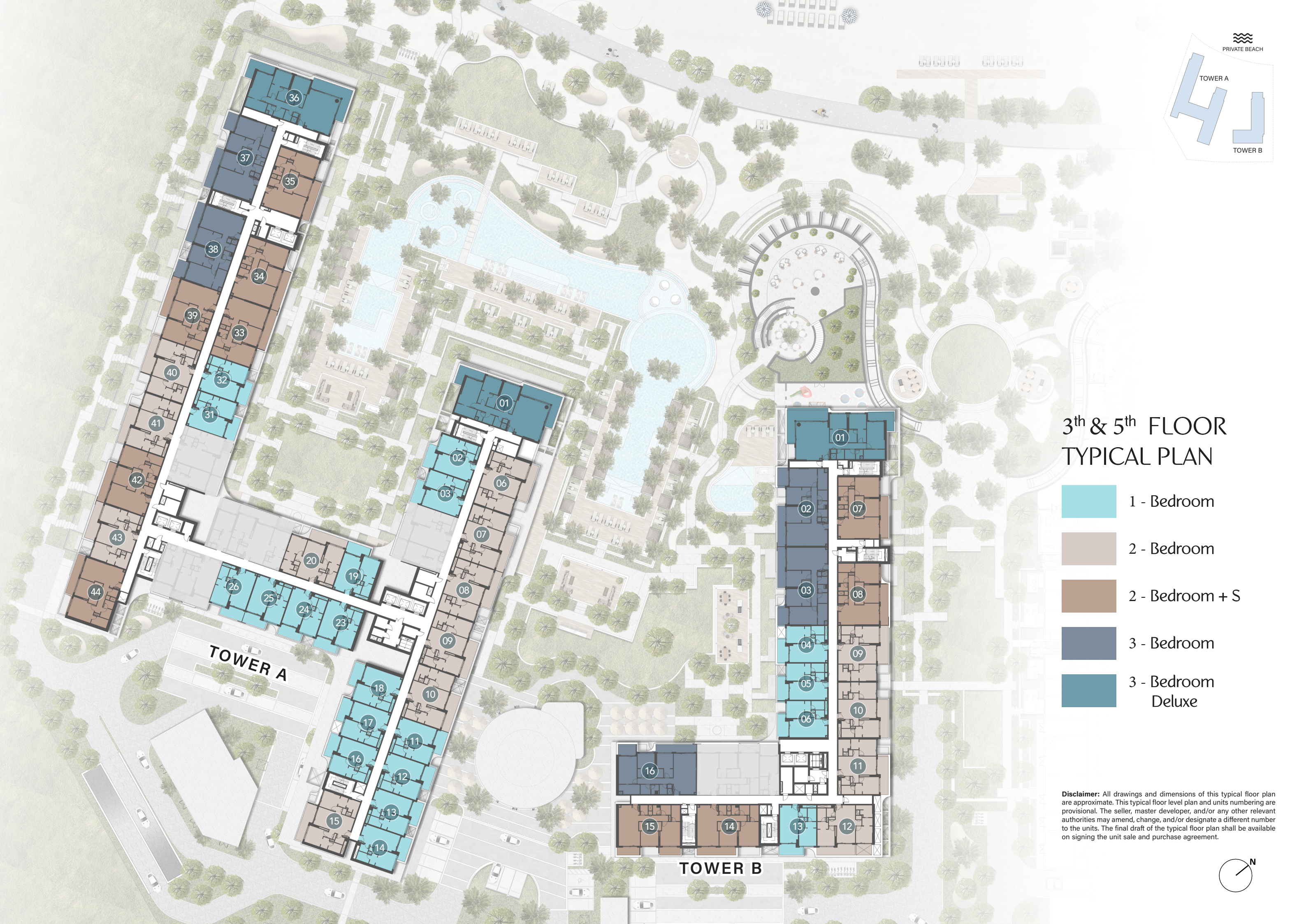




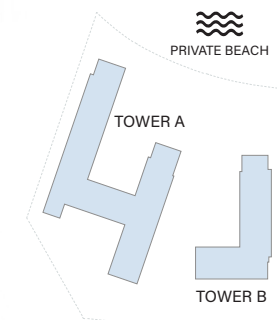
## 3<sup>th</sup> & 5<sup>th</sup> FLOOR TYPICAL PLAN

- 1 - Bedroom
- 2 - Bedroom
- 2 - Bedroom + S
- 3 - Bedroom
- 3 - Bedroom  
Deluxe

**Disclaimer:** All drawings and dimensions of this typical floor plan are approximate. This typical floor level plan and units numbering are provisional. The seller, master developer, and/or any other relevant authorities may amend, change, and/or designate a different number to the units. The final draft of the typical floor plan shall be available on signing the unit sale and purchase agreement.







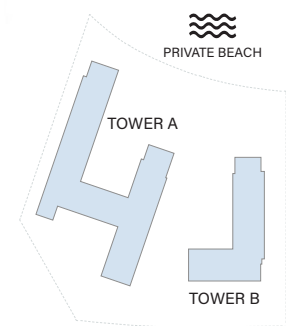
## 7<sup>th</sup> FLOOR TYPICAL PLAN

- 1 - Bedroom
- 2 - Bedroom
- 2 - Bedroom + S
- 3 - Bedroom
- 3 - Bedroom  
Deluxe
- 4 - Bedroom  
Penthouse




**Disclaimer:** All drawings and dimensions of this typical floor plan are approximate. This typical floor level plan and units numbering are provisional. The seller, master developer, and/or any other relevant authorities may amend, change, and/or designate a different number to the units. The final draft of the typical floor plan shall be available on signing the unit sale and purchase agreement.



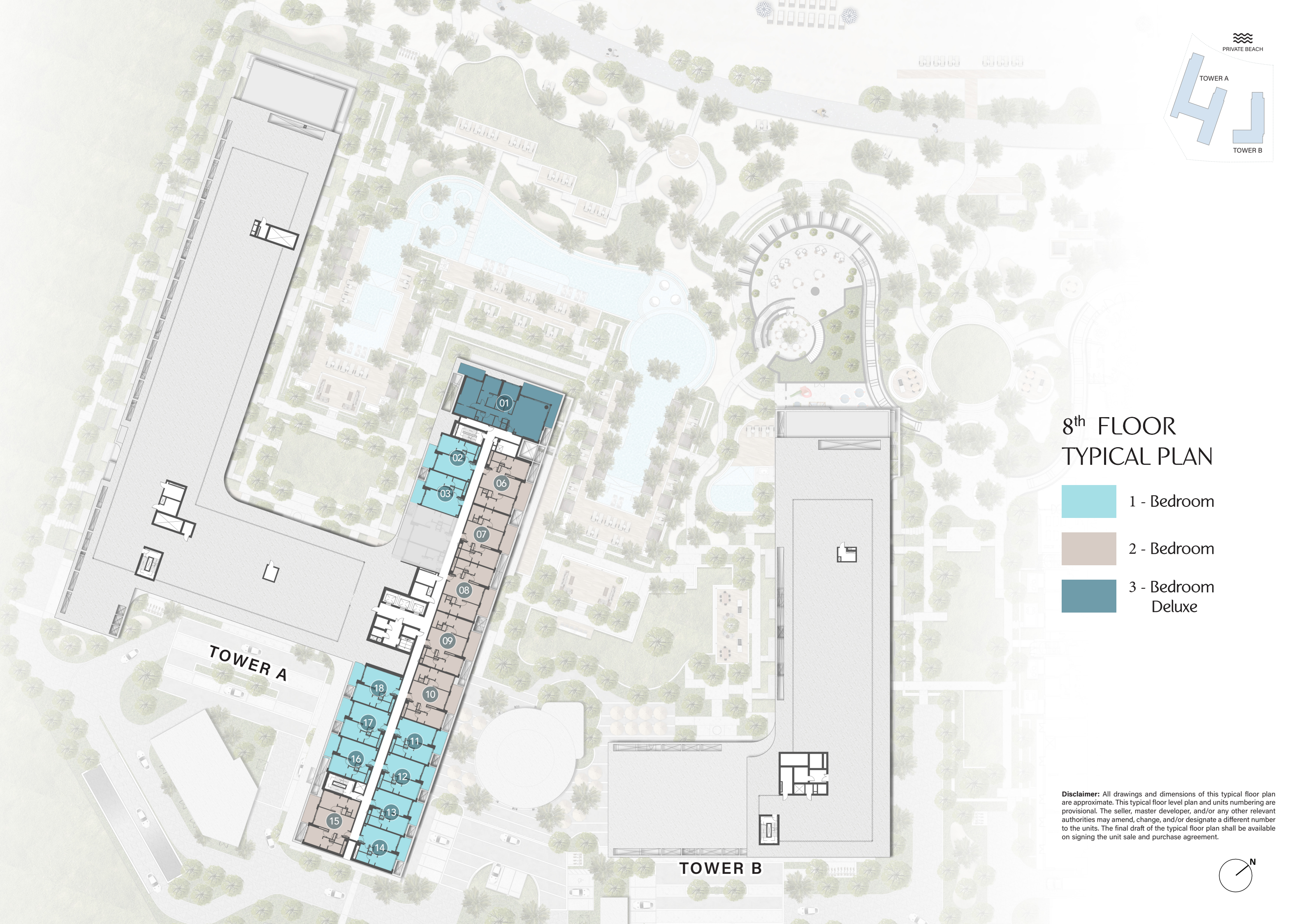
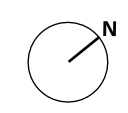




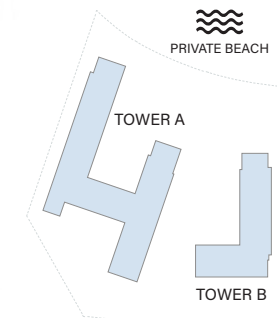
# 8<sup>th</sup> FLOOR TYPICAL PLAN

-  1 - Bedroom
-  2 - Bedroom
-  3 - Bedroom Deluxe

**Disclaimer:** All drawings and dimensions of this typical floor plan are approximate. This typical floor level plan and units numbering are provisional. The seller, master developer, and/or any other relevant authorities may amend, change, and/or designate a different number to the units. The final draft of the typical floor plan shall be available on signing the unit sale and purchase agreement.



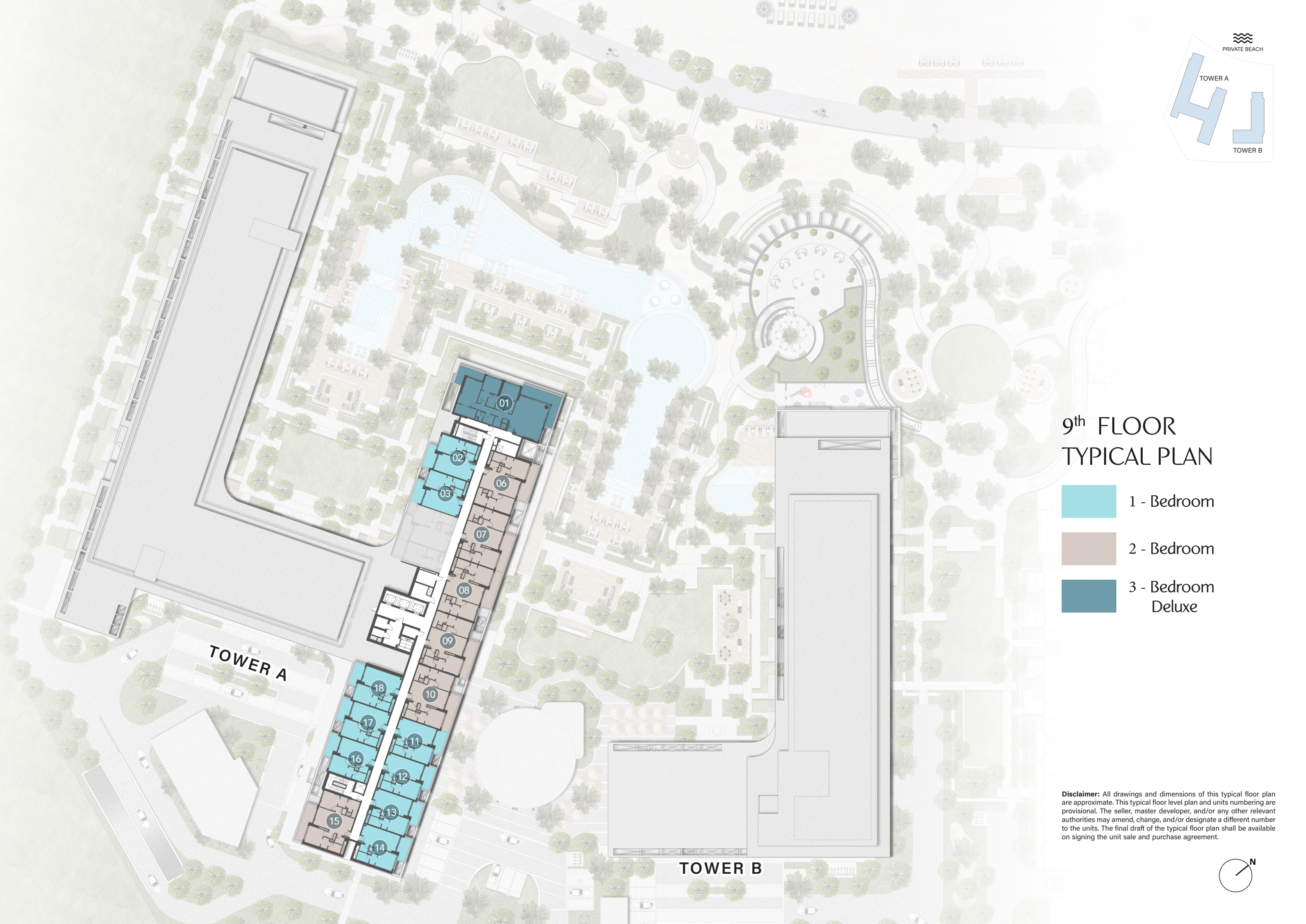




## 9<sup>th</sup> FLOOR TYPICAL PLAN

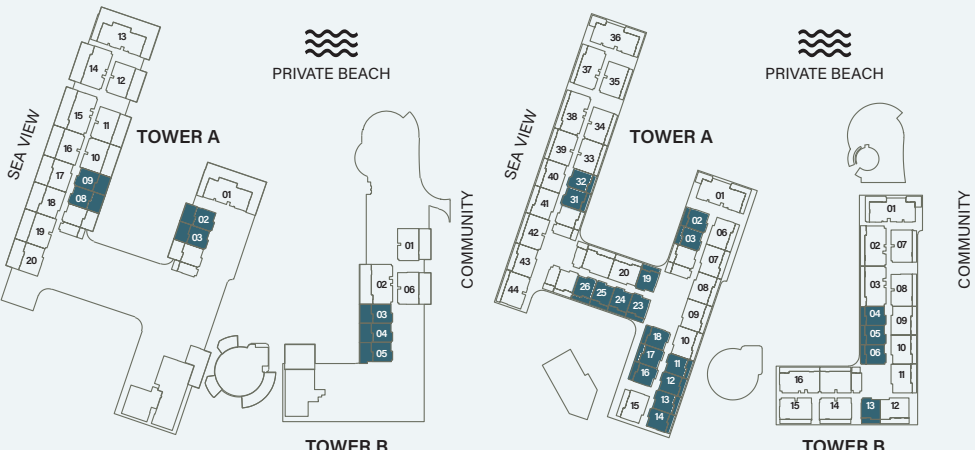
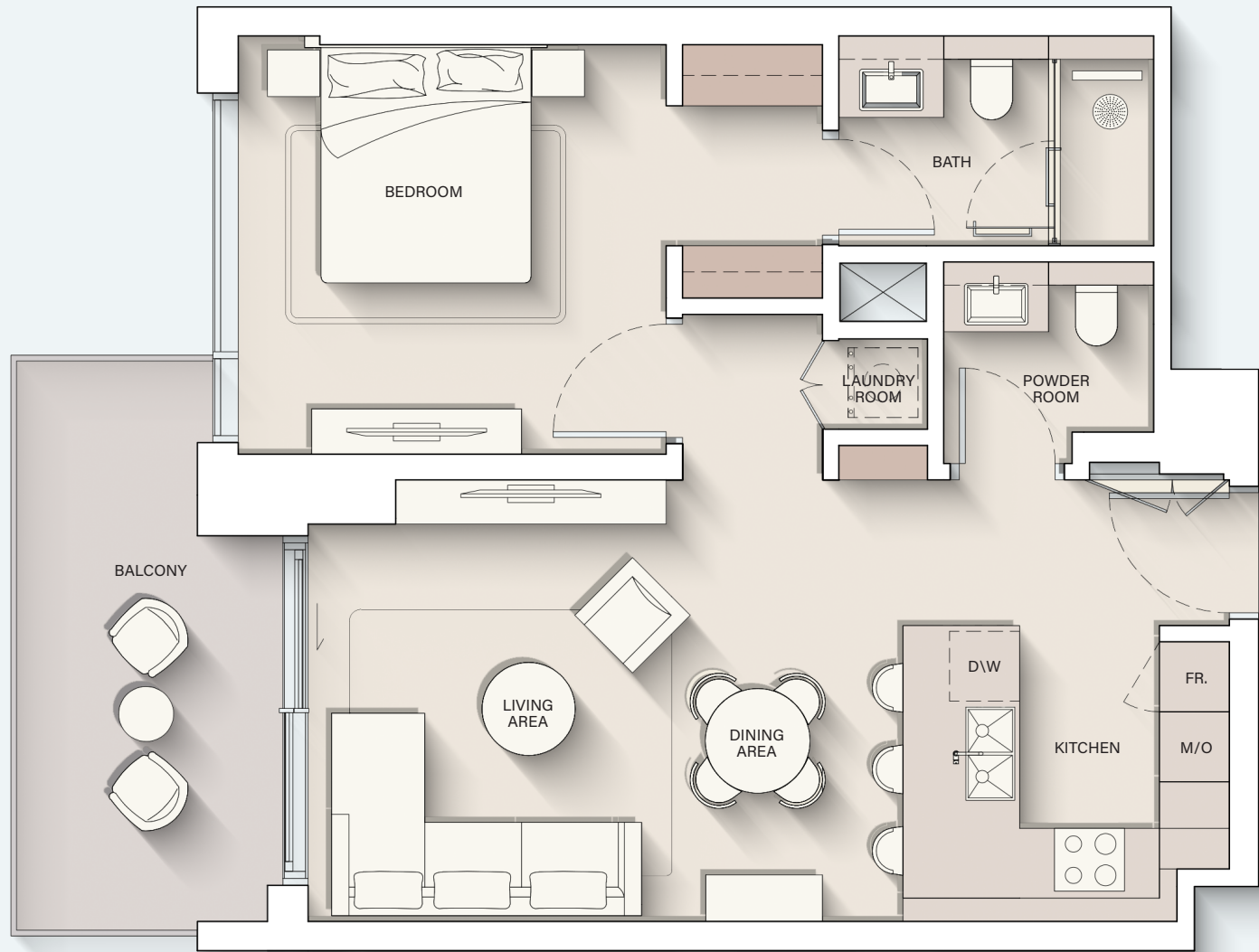
- 1 - Bedroom
- 2 - Bedroom
- 3 - Bedroom  
Deluxe

**Disclaimer:** All drawings and dimensions of this typical floor plan are approximate. This typical floor level plan and units numbering are provisional. The seller, master developer, and/or any other relevant authorities may amend, change, and/or designate a different number to the units. The final draft of the typical floor plan shall be available on signing the unit sale and purchase agreement.

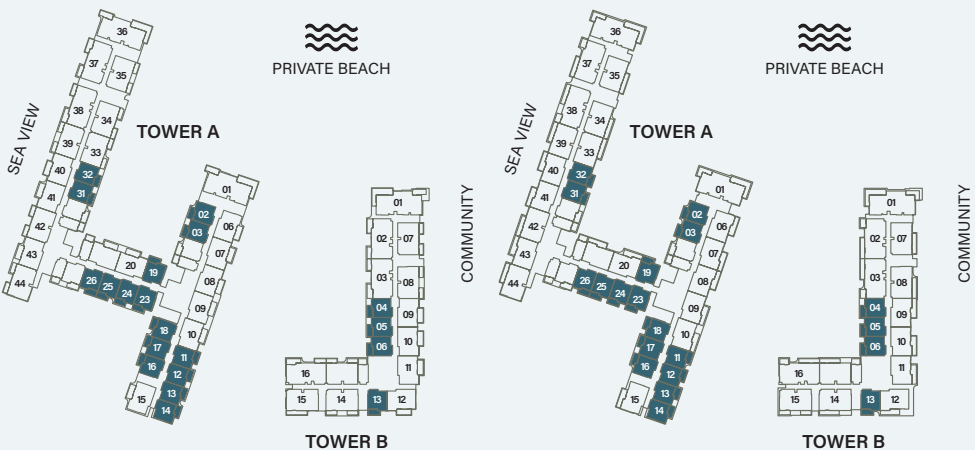




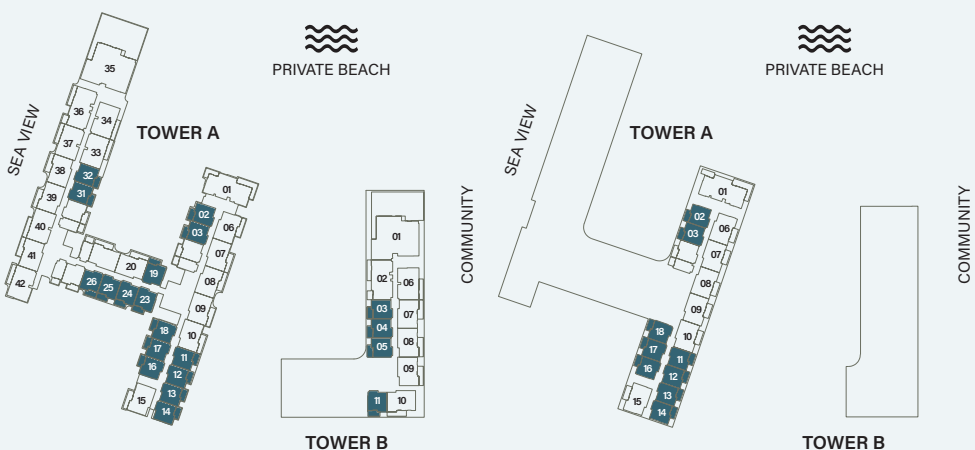
# 1 - BEDROOM



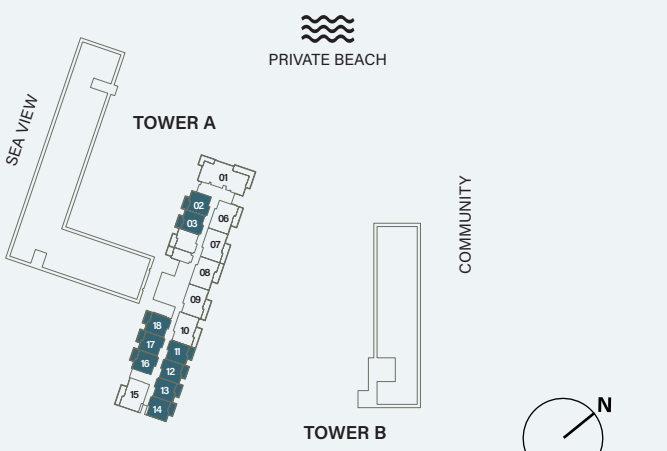
Ground Floor 1st Floor



2nd, 4th & 6th Floor 3rd & 5th Floor



7th Floor 8th Floor

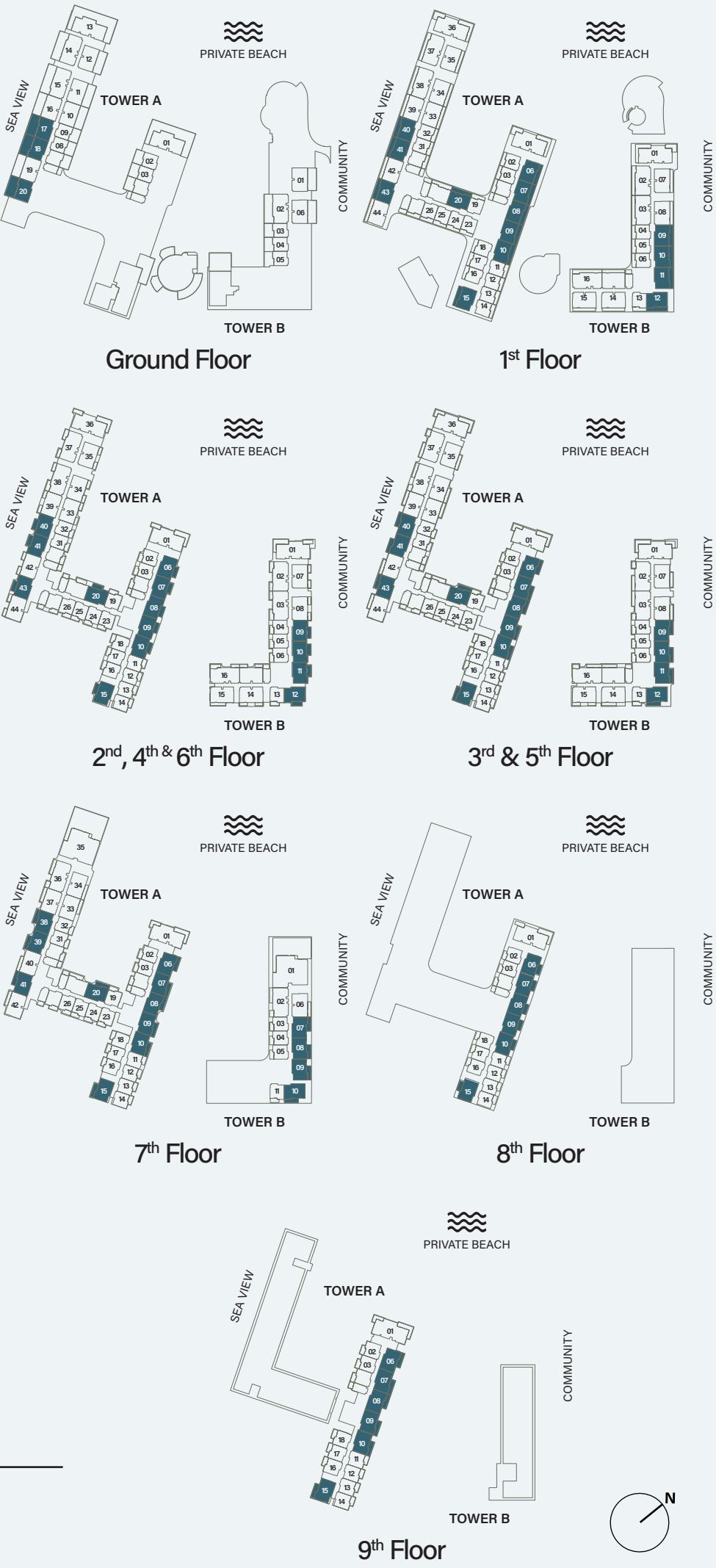
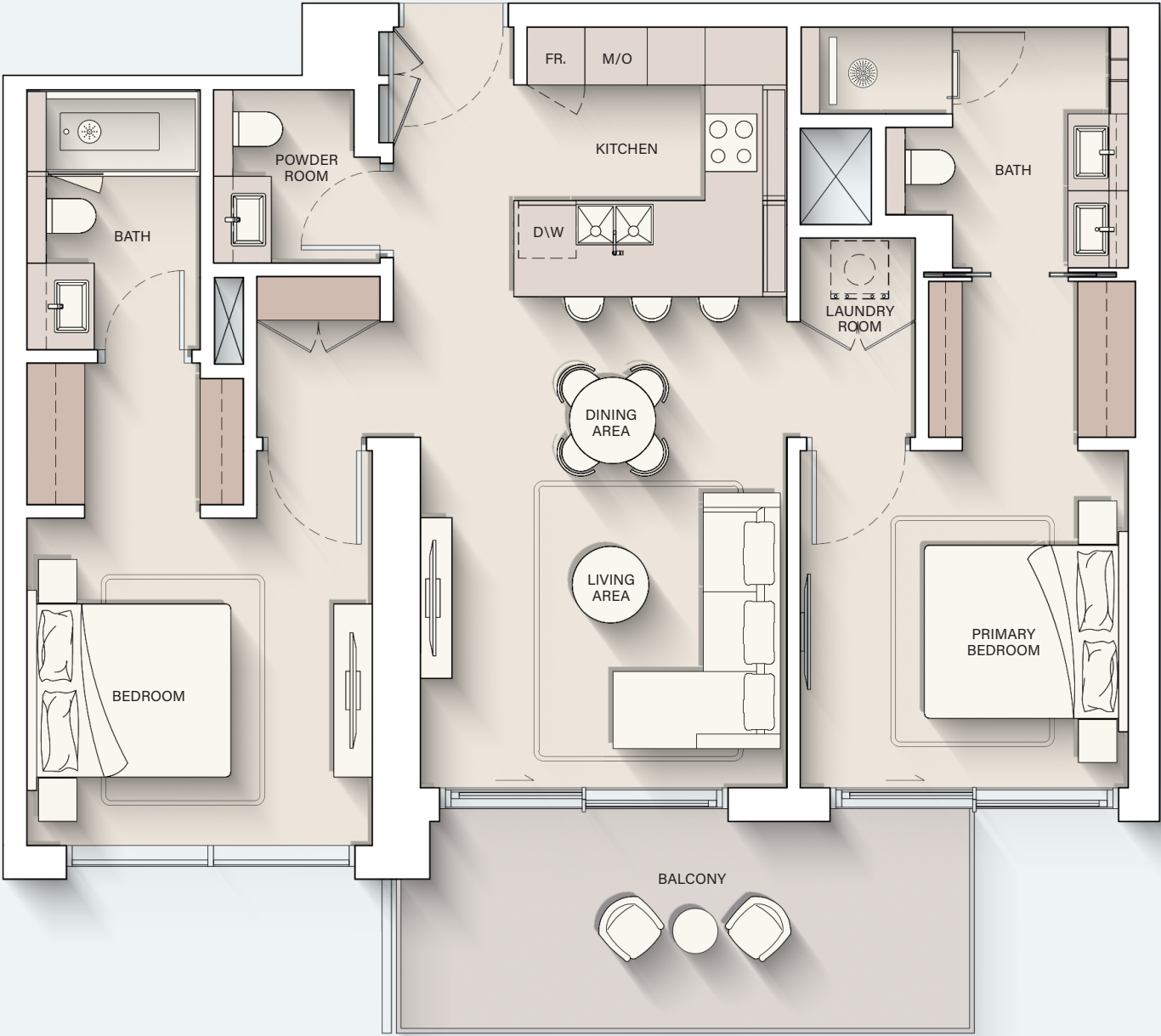


9th Floor

Internal Living Area : **692.44 sq. ft** Outdoor Living Area : **123.68 sq. ft** Total Living Area : **816.12 sq. ft**



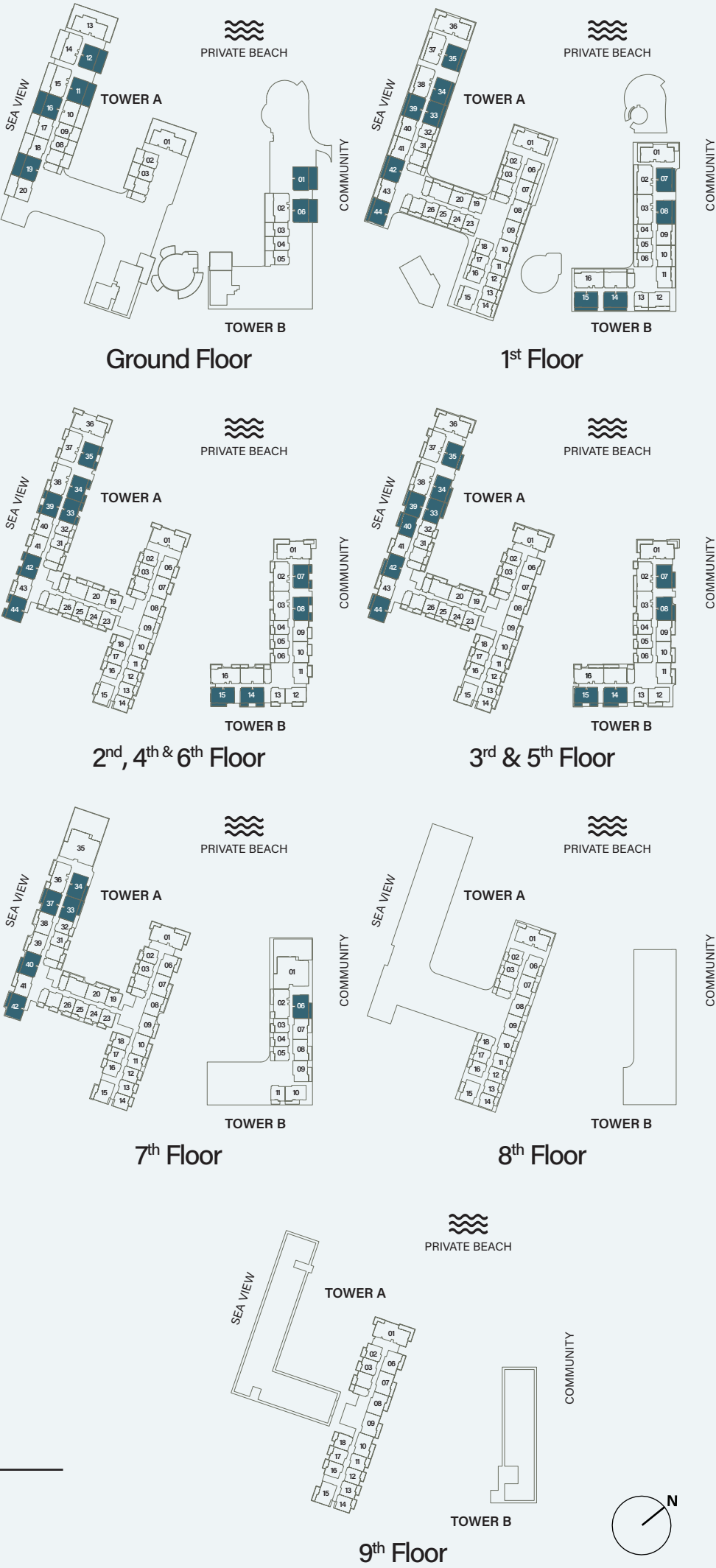
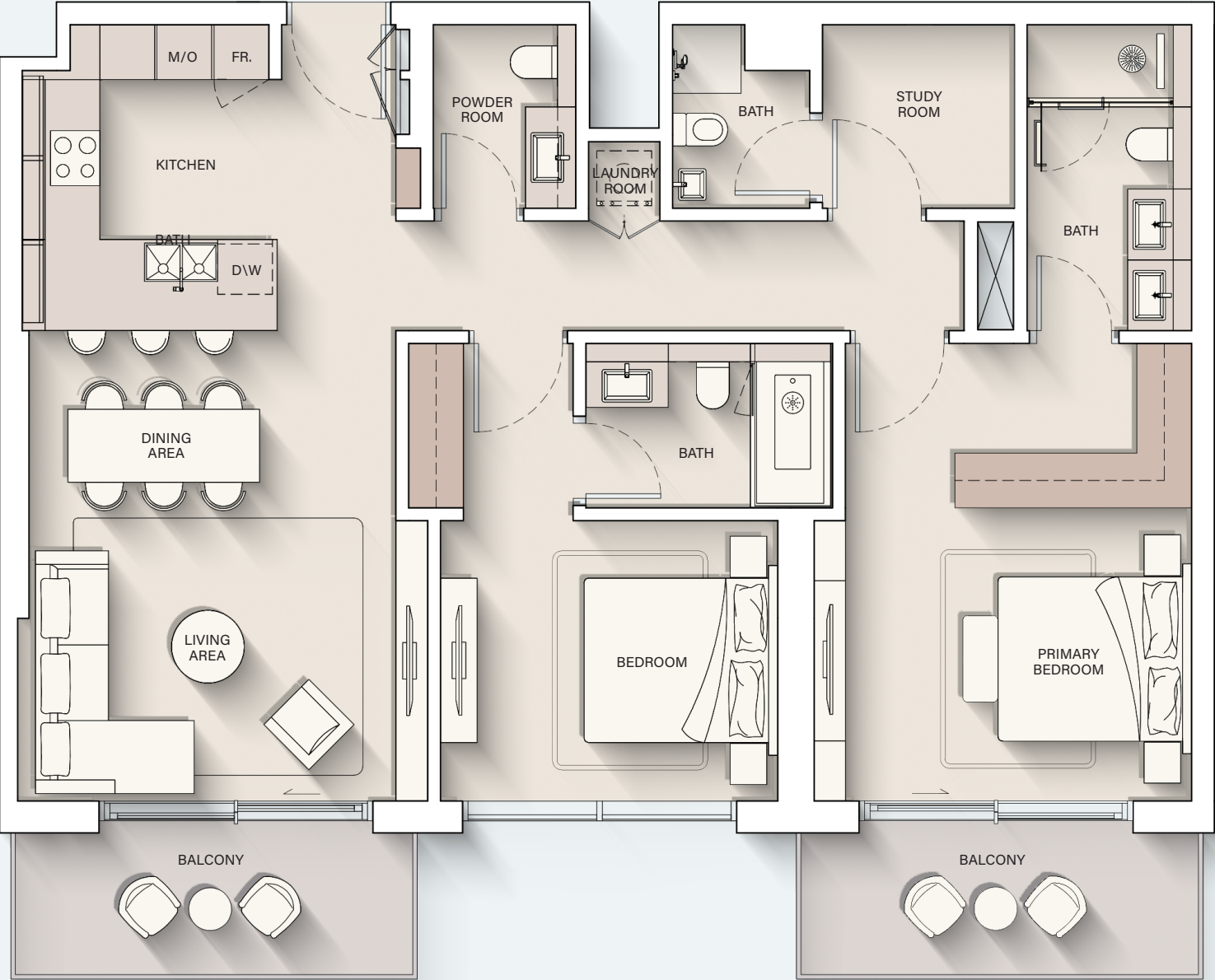
# 2 - BEDROOM



Internal Living Area : 1017.94 sq. ft      Outdoor Living Area : 154.35 sq. ft      Total Living Area : 1172.30 sq. ft



# 2 - BEDROOM + S



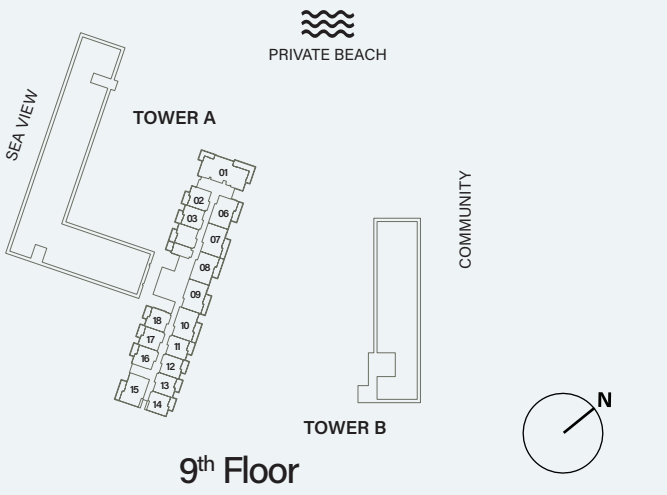
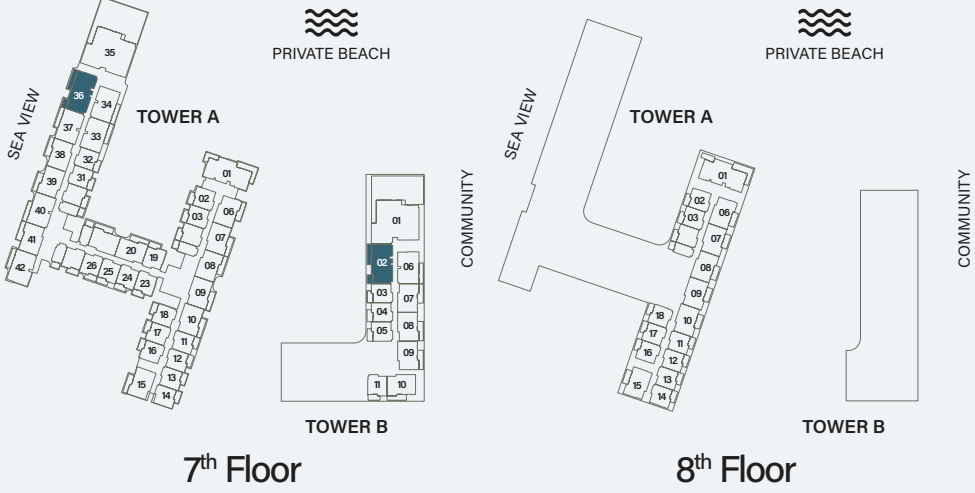
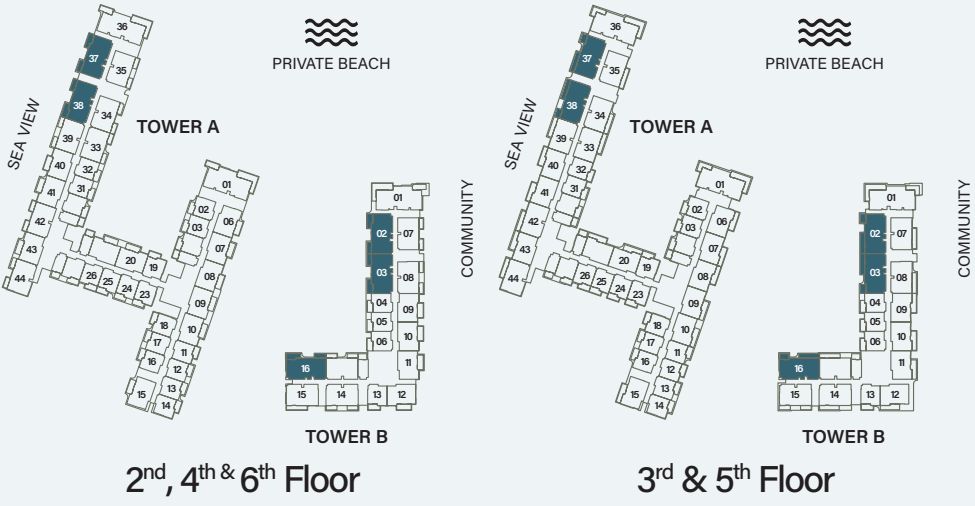
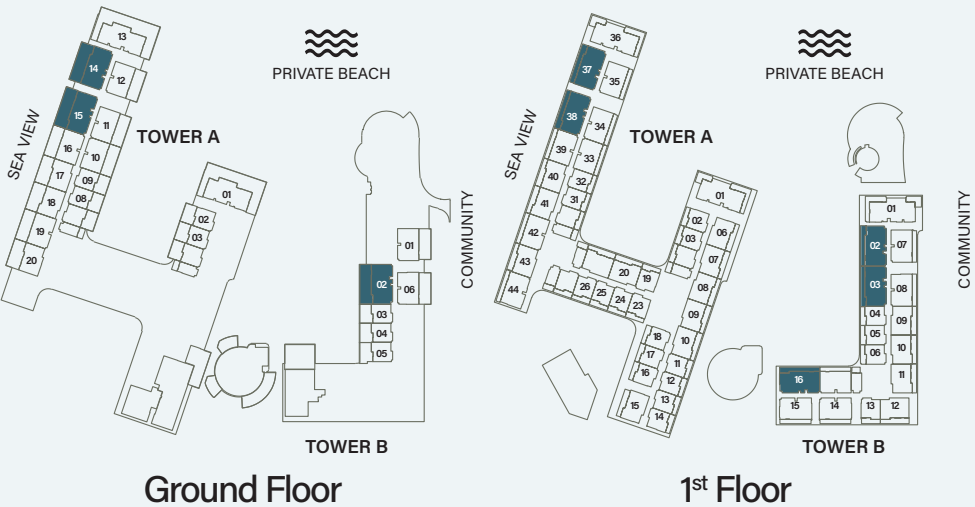
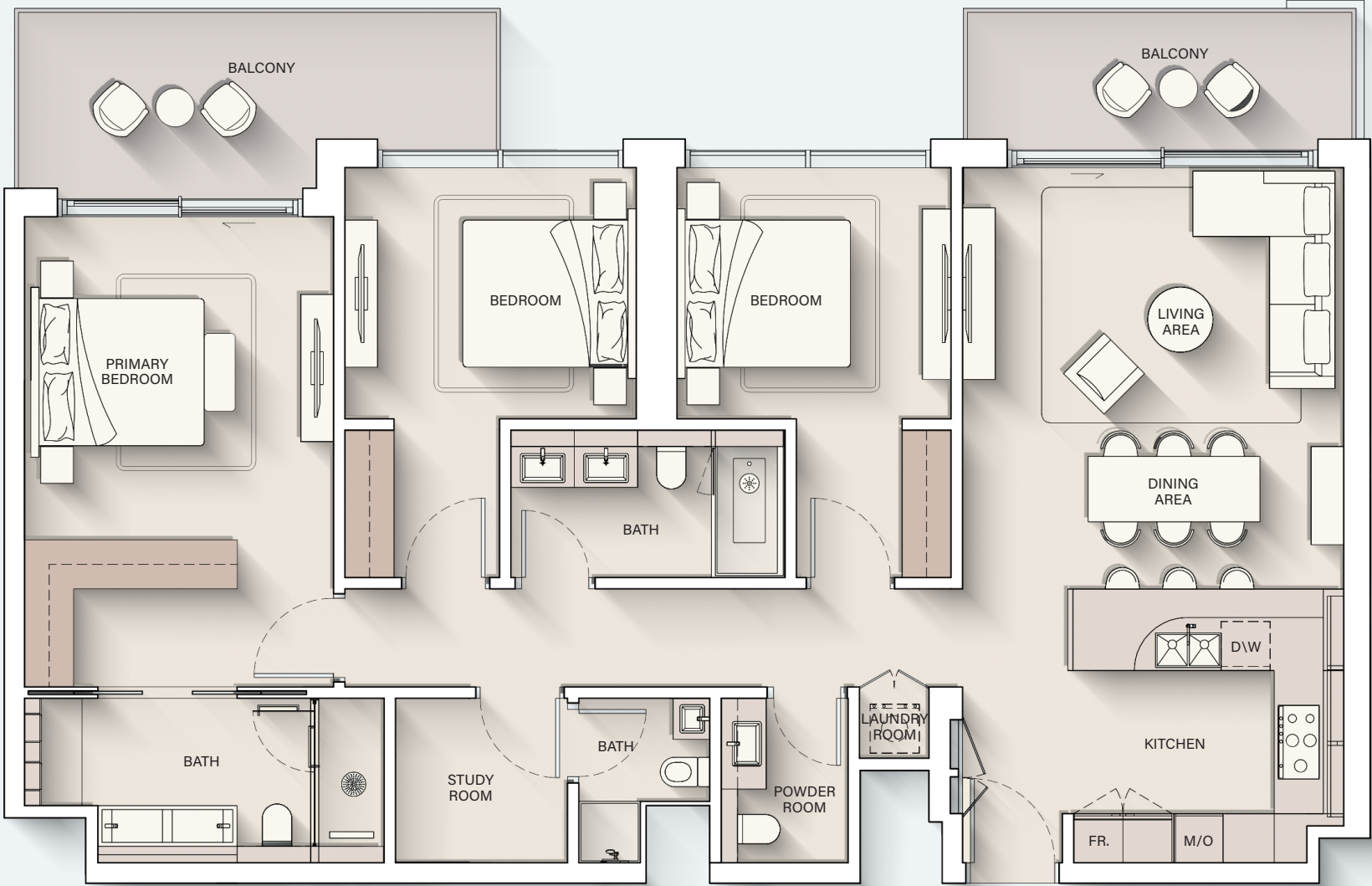
Internal Living Area : 1231.07 sq. ft

Outdoor Living Area : 168.13 sq. ft

Total Living Area : 1399.20 sq. ft



# 3 - BEDROOM

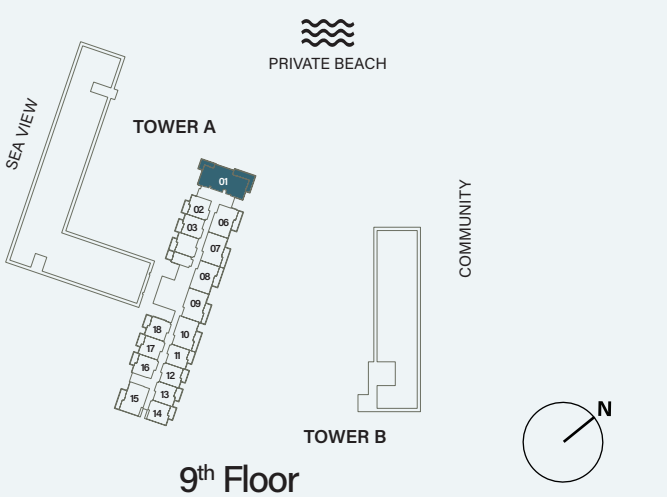
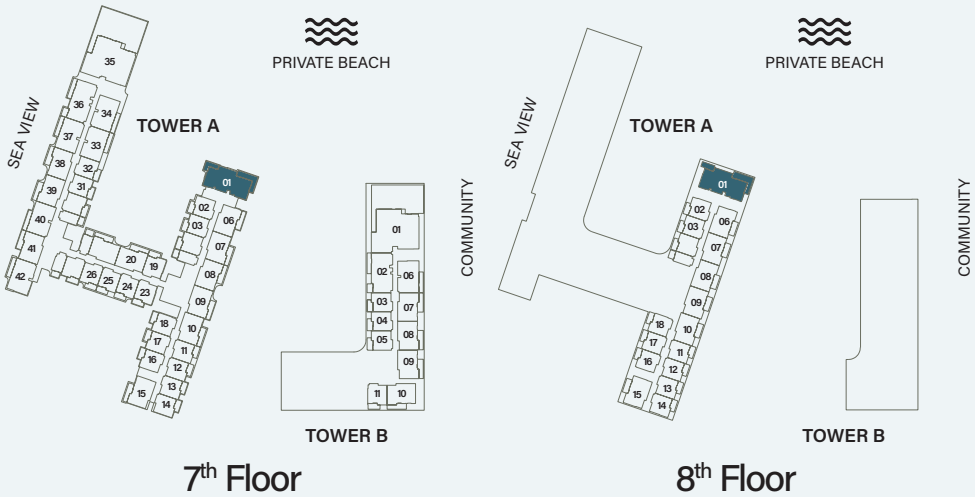
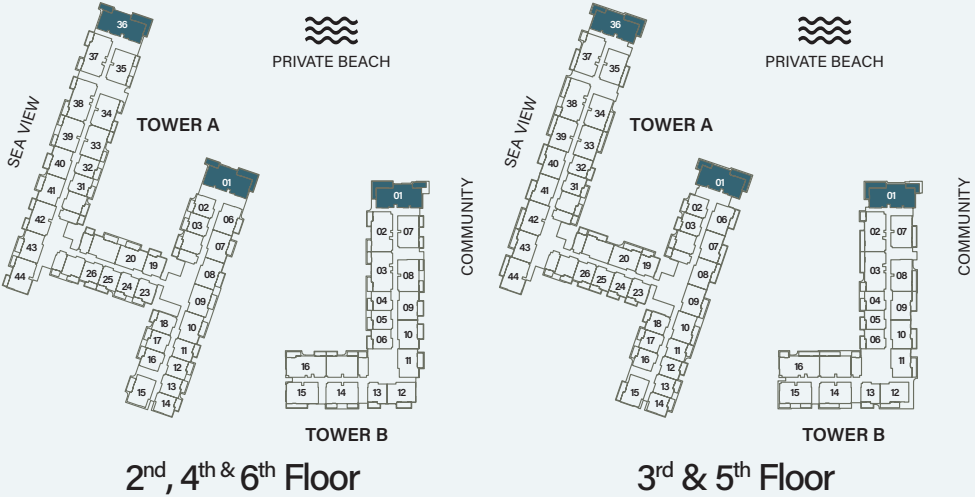
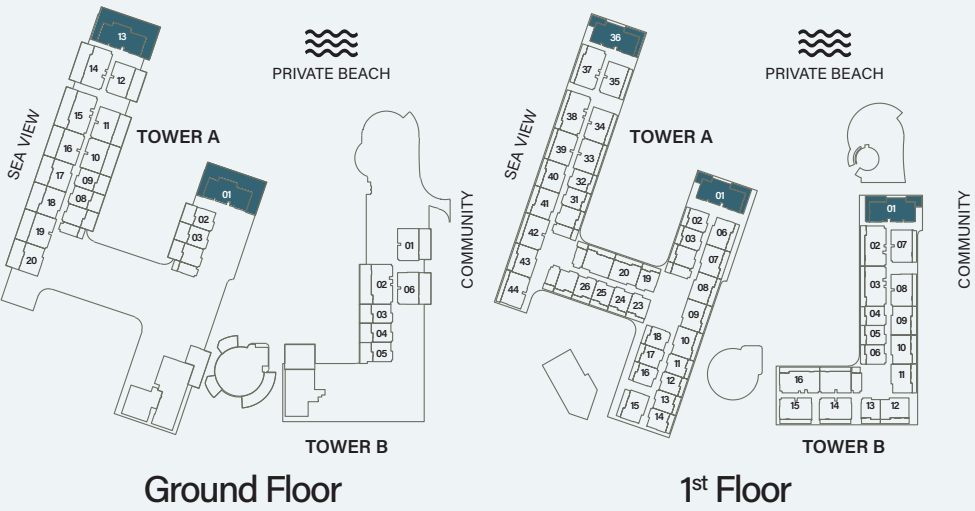
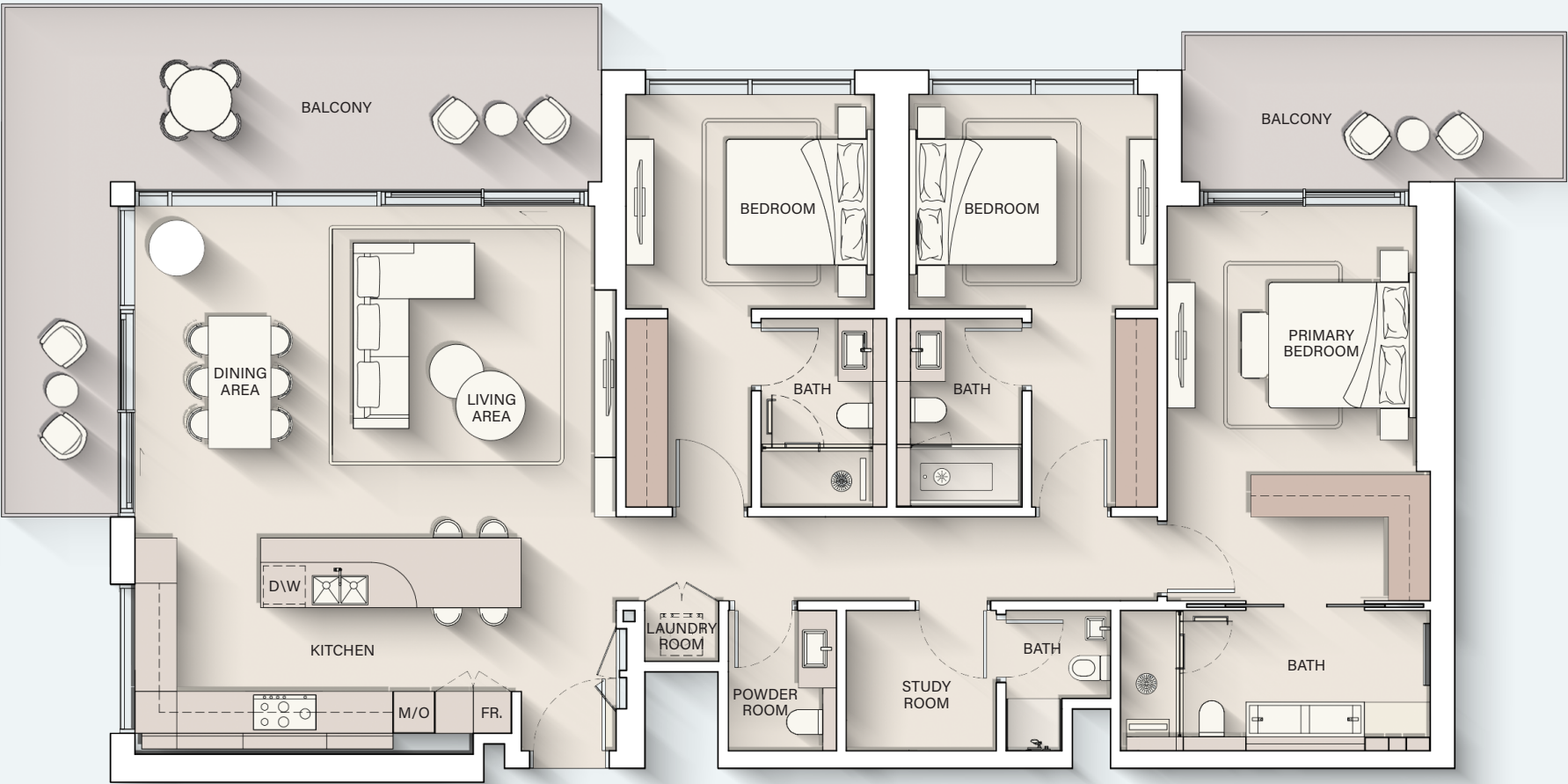


Internal Living Area : 1500.17 sq. ft      Outdoor Living Area : 230.46 sq. ft      Total Living Area : 1730.62 sq. ft





# 3 - BEDROOM DELUXE

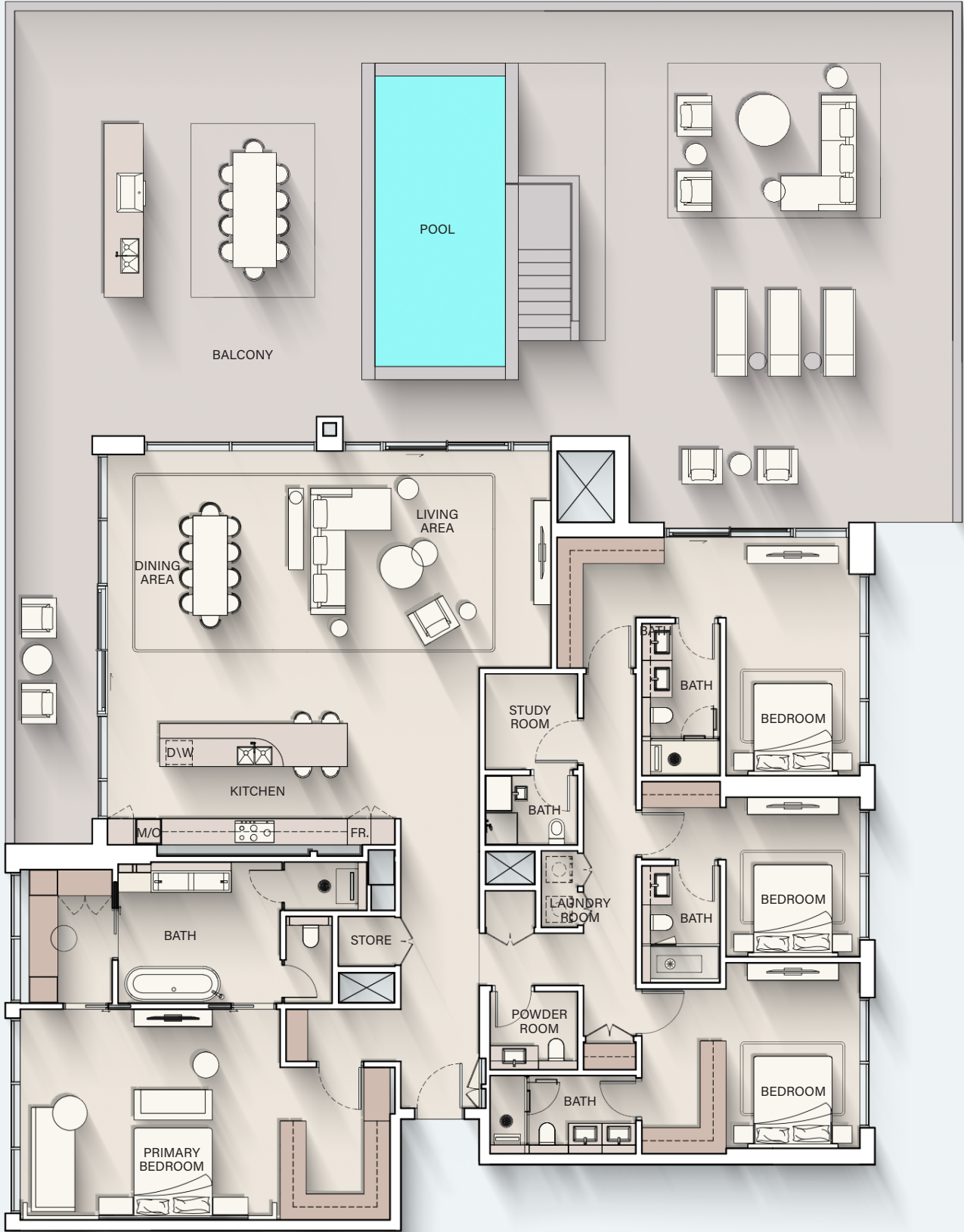


Internal Living Area : 1771.85 sq. ft      Outdoor Living Area : 477.06 sq. ft      Total Living Area : 2248.90 sq. ft





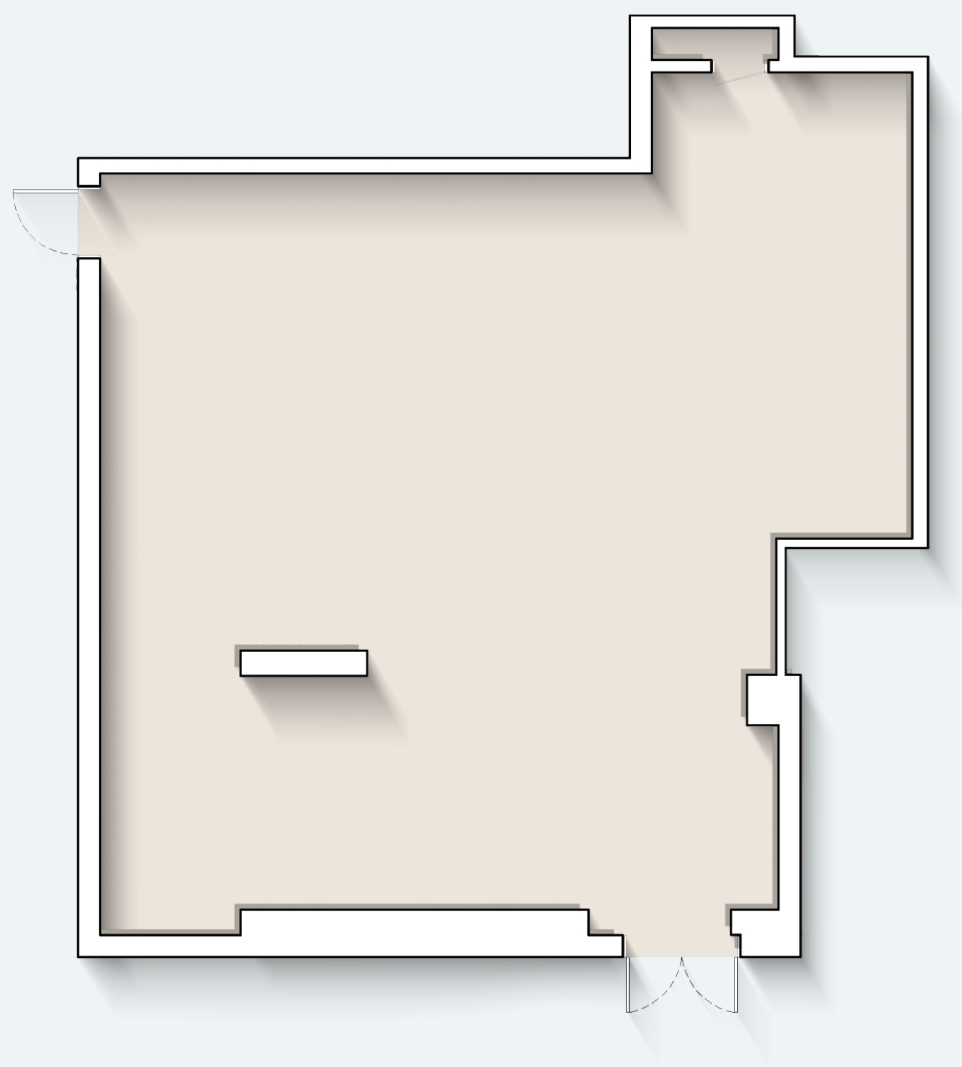
# 4 - BEDROOM PENTHOUSE



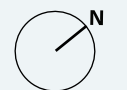
Internal Living Area : 3222.50 sq. ft    Outdoor Living Area : 2663.64 sq. ft    Total Living Area : 5886.14 sq. ft



# RETAIL - 1

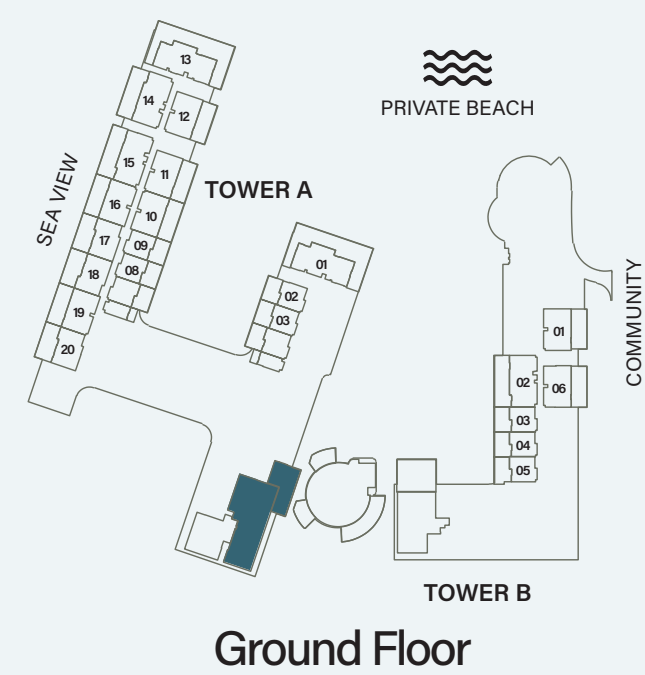
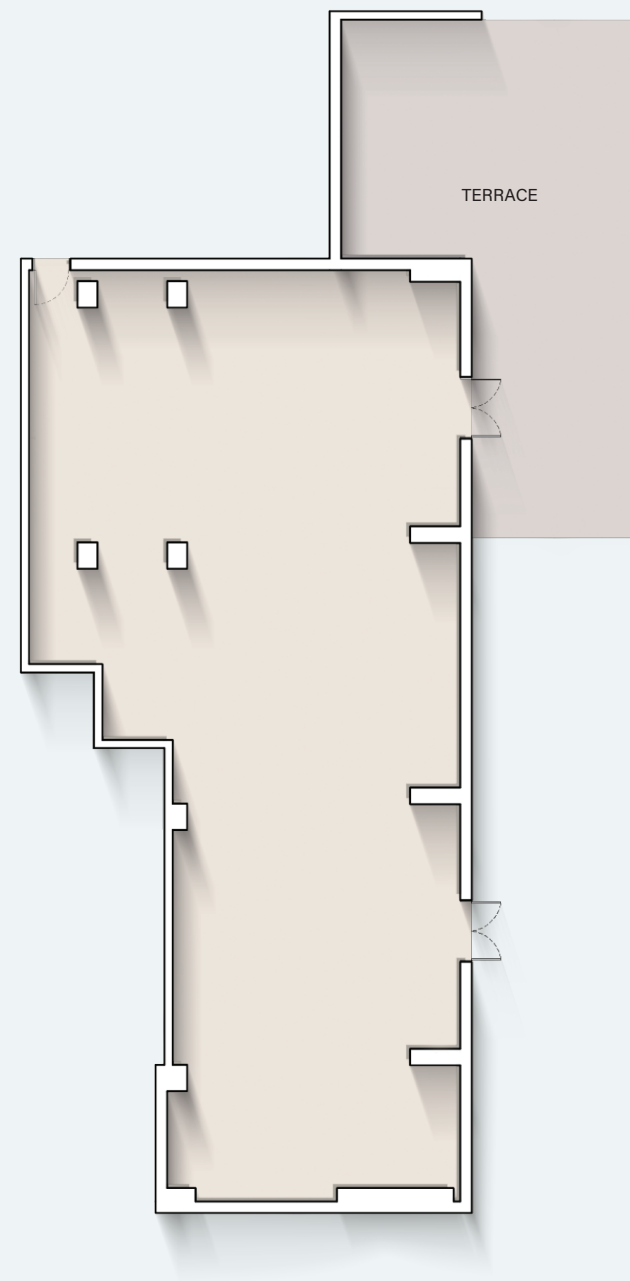


Internal Living Area : **1695.85 sq. ft**



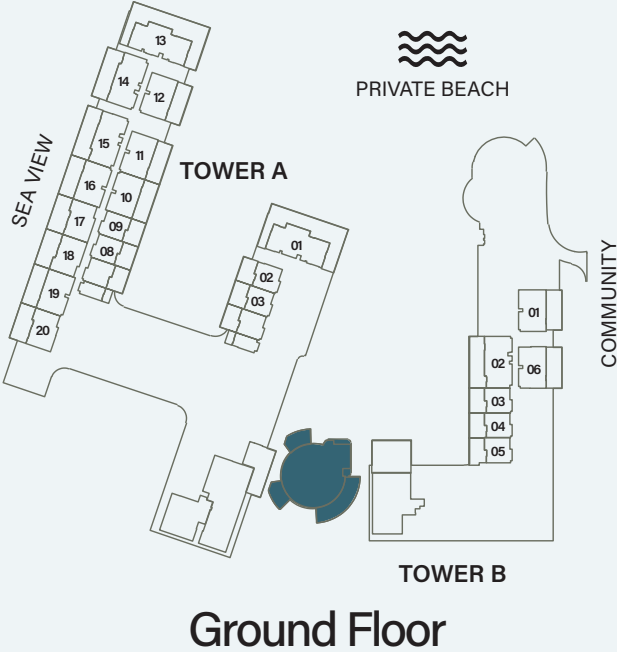
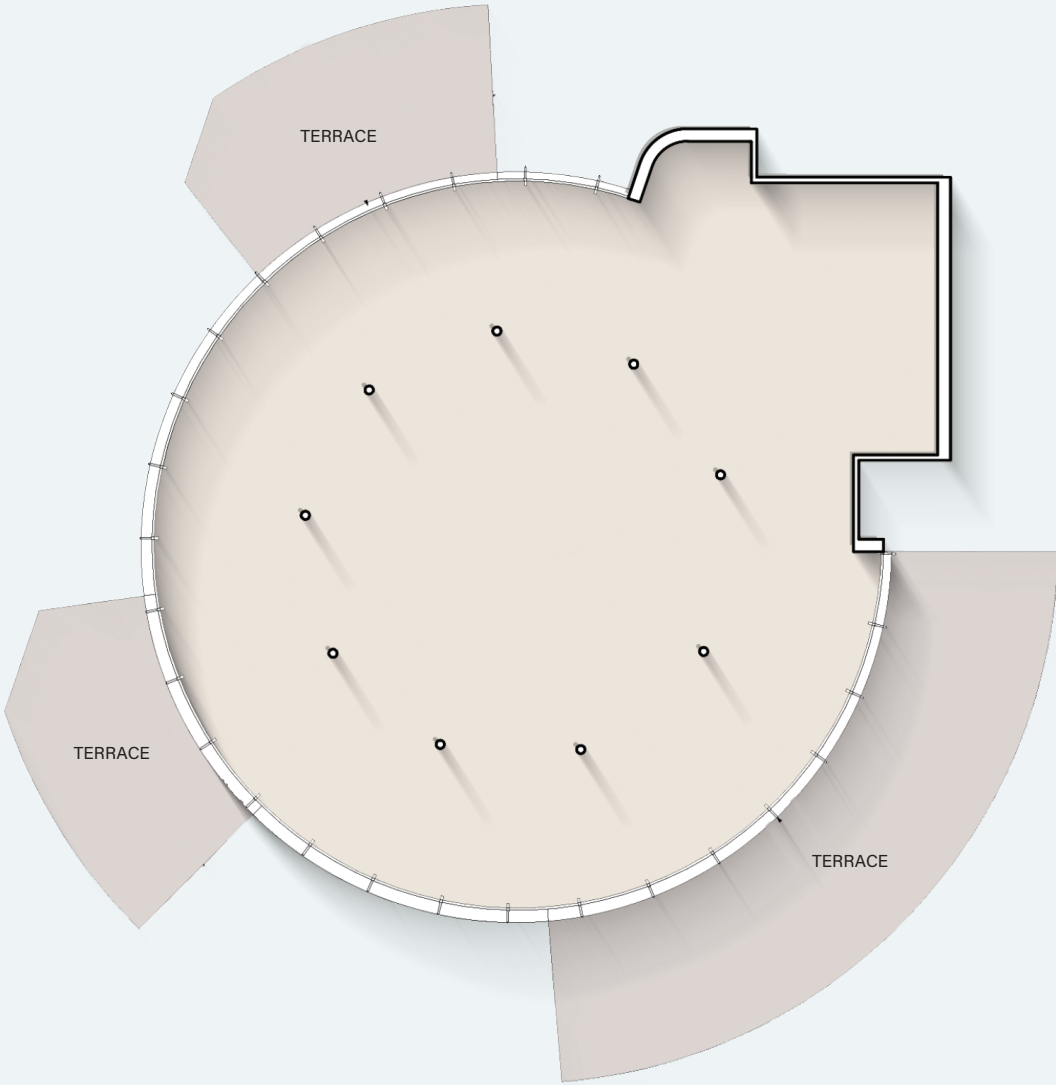


# RETAIL - 2





# RETAIL - 3



Internal Living Area : **3913.11 sq. ft**

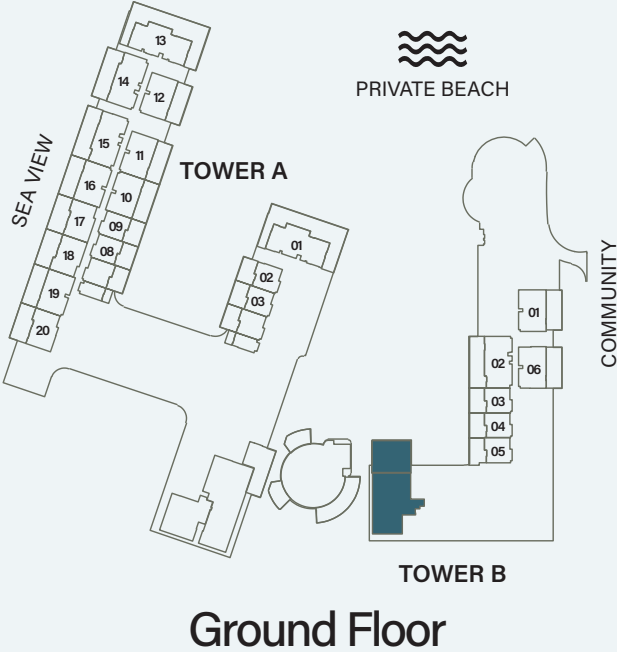
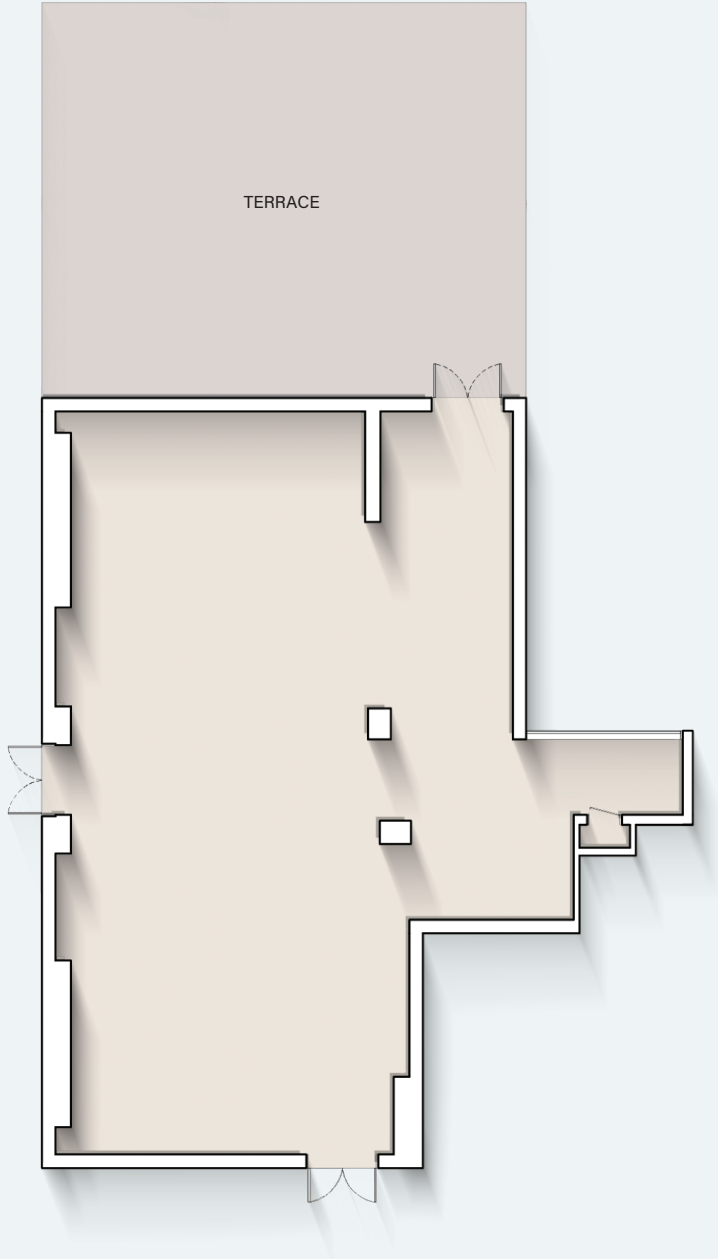
Outdoor Living Area : **1845.90 sq. ft**

Total Living Area : **5759.01 sq. ft**





# RETAIL - 4



Internal Living Area : **2535.12 sq. ft**

Outdoor Living Area : **1393.71 sq. ft**

Total Living Area : **3928.83 sq. ft**







# ELLINGTON

PROPERTIES

800 8288  
info@ellingtongroup.com

ELLINGTONPROPERTIES.AE

The renderings and visualizations contained in this brochure are provided for illustrative and marketing purposes. While the information provided is believed to be accurate and reliable at the time of printing, only the information contained in the final Sales and Purchase Agreement will have any legal effect.