

CREEK VIEWS

BY IRAZ DEVELOPMENTS

YOUR DREAM

Space Awaits!



CREEK VIEWS

By IRAZ Developments



The magic thing about home is that it
feels good to leave, and it feels even
better to come back.

Wendy Wunder





IRAZ

DEVELOPMENTS

אדג'יט





The left side of the image features a dark, textured background with a golden, organic, leaf-like pattern. Overlaid on this is the Iraz Developments logo, which consists of a stylized white 'I' made of three vertical bars of increasing height, followed by the word 'IRAZ' in a large, bold, white sans-serif font, and the word 'DEVELOPMENTS' in a smaller, white sans-serif font below it.

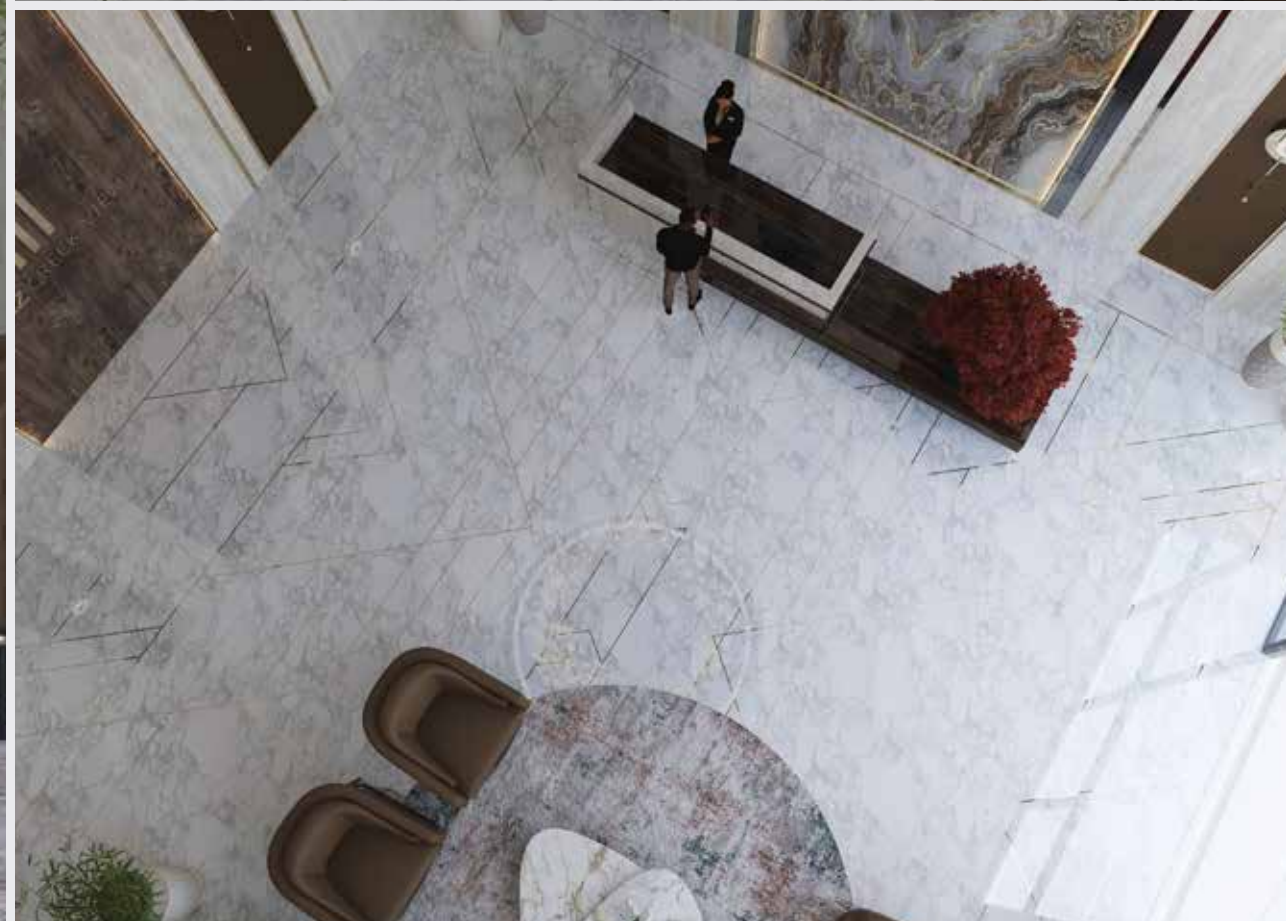
IRAZ
DEVELOPMENTS





LOBBY









 14 FLOOR

13

10

CORRIDOR





SWIMMING POOL



GYM



ENTRY



LIVING ROOM



Find Your **PERFECT CATCH**

Embark on your ultimate fishing adventure, where every cast holds the promise of thrills and memories, waiting to be caught.



BEDROOM





KITCHEN & DINING



Elevating Your **GARDEN PARADISE**

A sanctuary where lush foliage dances in harmony,
a haven where every breath whispers the poetry of growth and renewal.



LAUNDRY





Oasis of **FAMILY FUN**

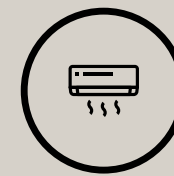
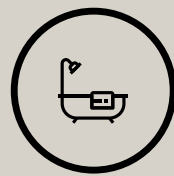
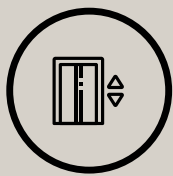
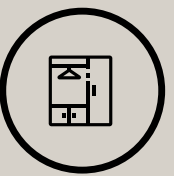
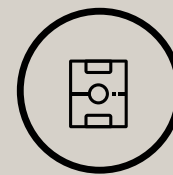
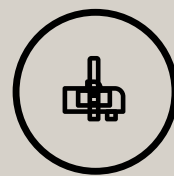
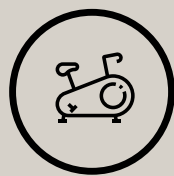
A family pool haven, where laughter echoes
and memories are made, creating moments that last a lifetime.



BATHROOM







- 24/7 Security and Surveillance
- Dedicated Parking Facility
- Fitness Centre or Gym

- Swimming Pool
- Well-Maintained Common Areas
- Energy-Efficient Appliances

- Adequate Storage Spaces
- Emergency Response Systems
- Package Delivery Services

- Modern Kitchen and Bathroom Fitting
- Accessible Elevators and Staircases
- Stunning Views







SMART HOME

YOUR BATHROOM





Appliances by
BOSCH AND TEKA



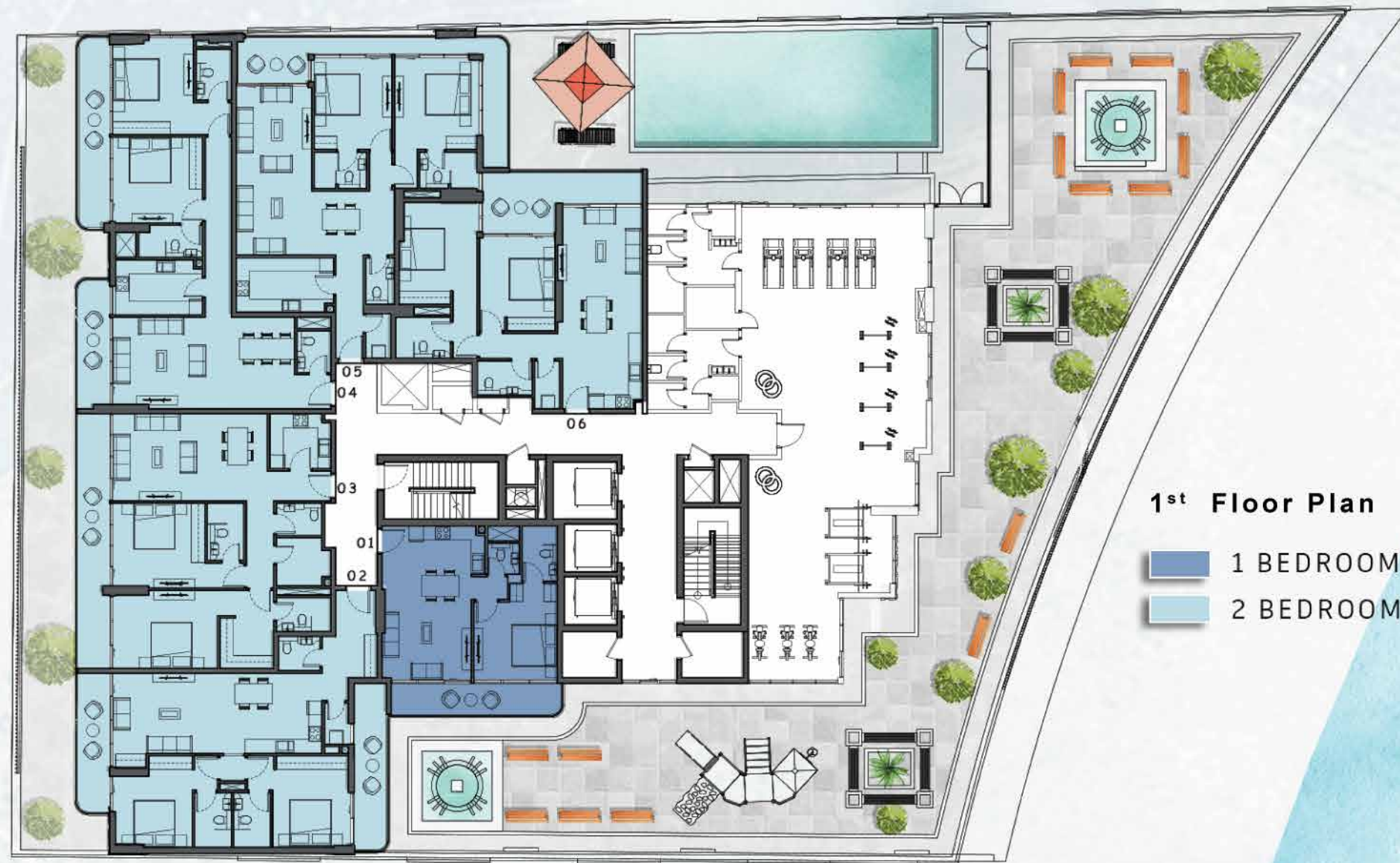
BOSCH

Invented for life



DUBAI CREEK

DISCLAIMER : All design, features, amenities, materials, dimensions, layout drawings are approximate and subject to change without prior notice. Actual area of the Unit may vary from the stated area; drawings not to scale. Developer reserves the right to make revisions to comply with any Applicable Law or the requirements of any Relevant Authority. For actual sizes please refer the Unit Reservation Agreement



1st Floor Plan

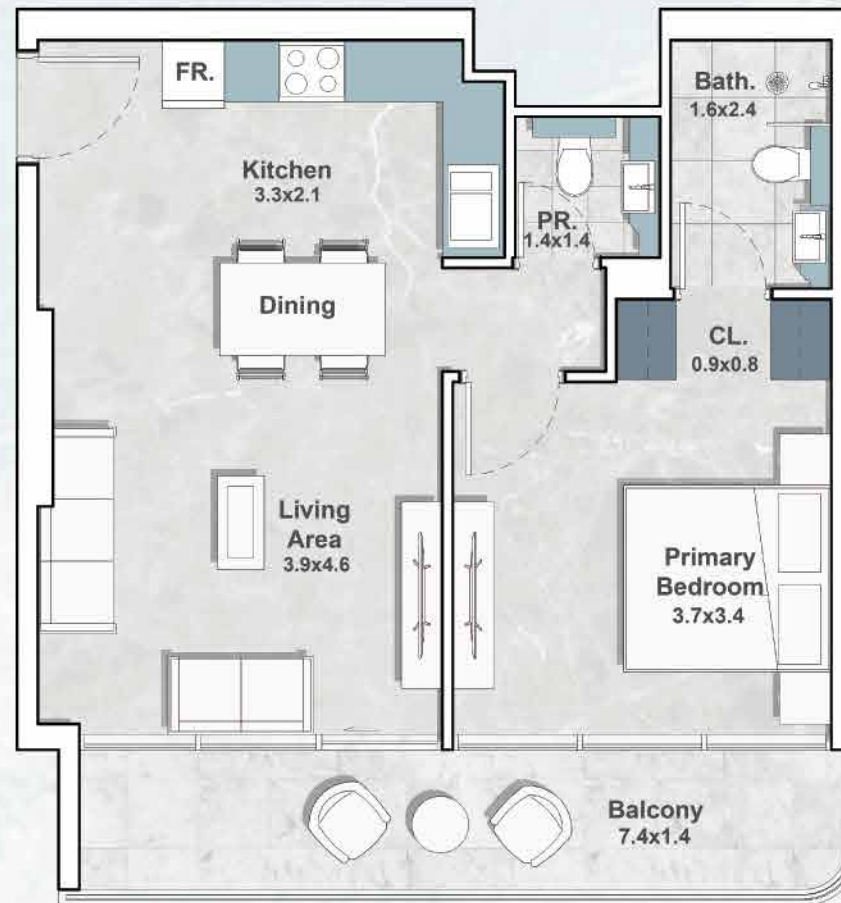
- 1 BEDROOM
- 2 BEDROOM

DUBAI CREEK

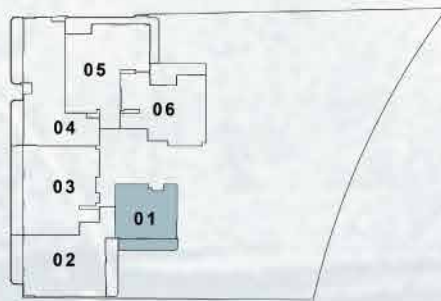
DISCLAIMER : All design, features, amenities, materials, dimensions, layout drawings are approximate and subject to change without prior notice. Actual area of the Unit may vary from the stated area; drawings not to scale. Developer reserves the right to make revisions to comply with any Applicable Law or the requirements of any Relevant Authority. For actual sizes please refer the Unit Reservation Agreement

UNIT 101

1 BEDROOM - TYPE A



1st Floor



Internal Living Area	:	571.24	Sq. Ft.
Outdoor Living Area	:	119.16	Sq. Ft.
Total Living Area	:	690.40	Sq. Ft.

DISCLAIMER : All design, features, amenities, materials, dimensions, layout drawings are approximate and subject to change without prior notice. Actual area of the Unit may vary from the stated area; drawings not to scale. Developer reserves the right to make revisions to comply with any Applicable Law or the requirements of any Relevant Authority. For actual sizes please refer the Unit Reservation Agreement

UNIT 102

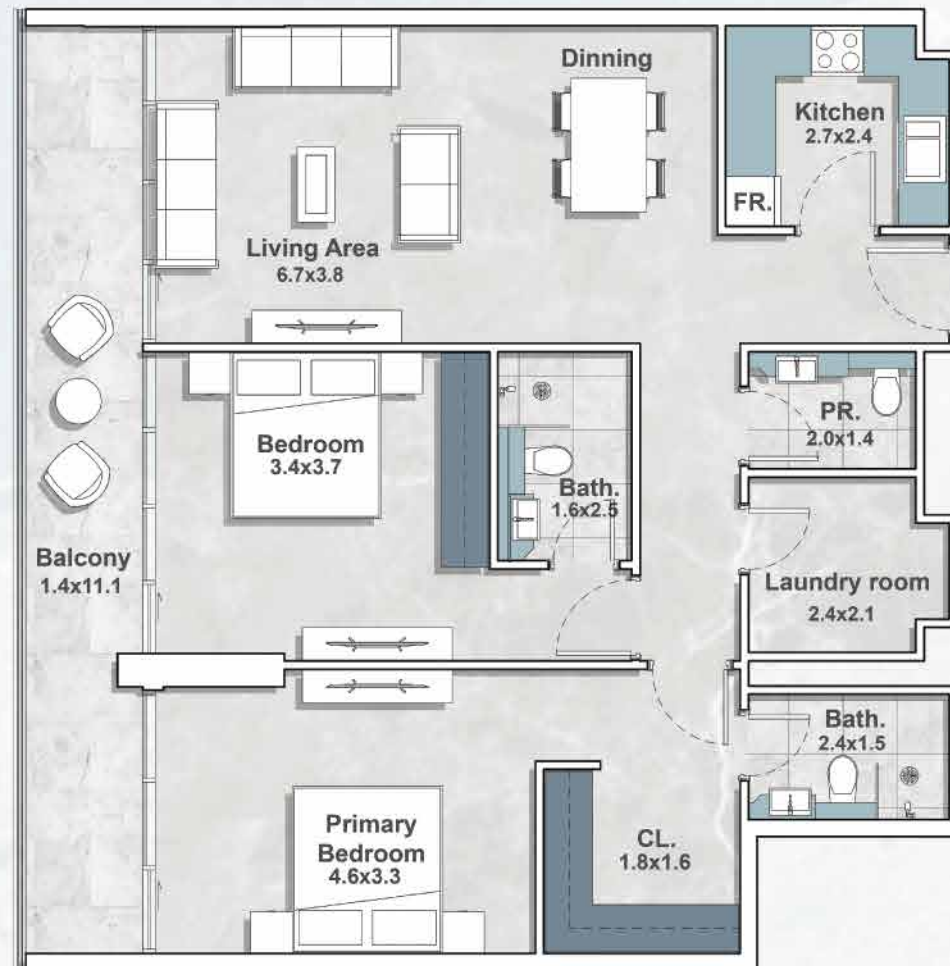
2 BEDROOM - TYPE A



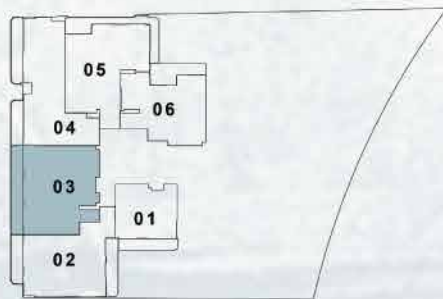
DISCLAIMER : All design, features, amenities, materials, dimensions, layout drawings are approximate and subject to change without prior notice. Actual area of the Unit may vary from the stated area; drawings not to scale. Developer reserves the right to make revisions to comply with any Applicable Law or the requirements of any Relevant Authority. For actual sizes please refer the Unit Reservation Agreement

UNIT 103

2 BEDROOM - TYPE B



1st Floor



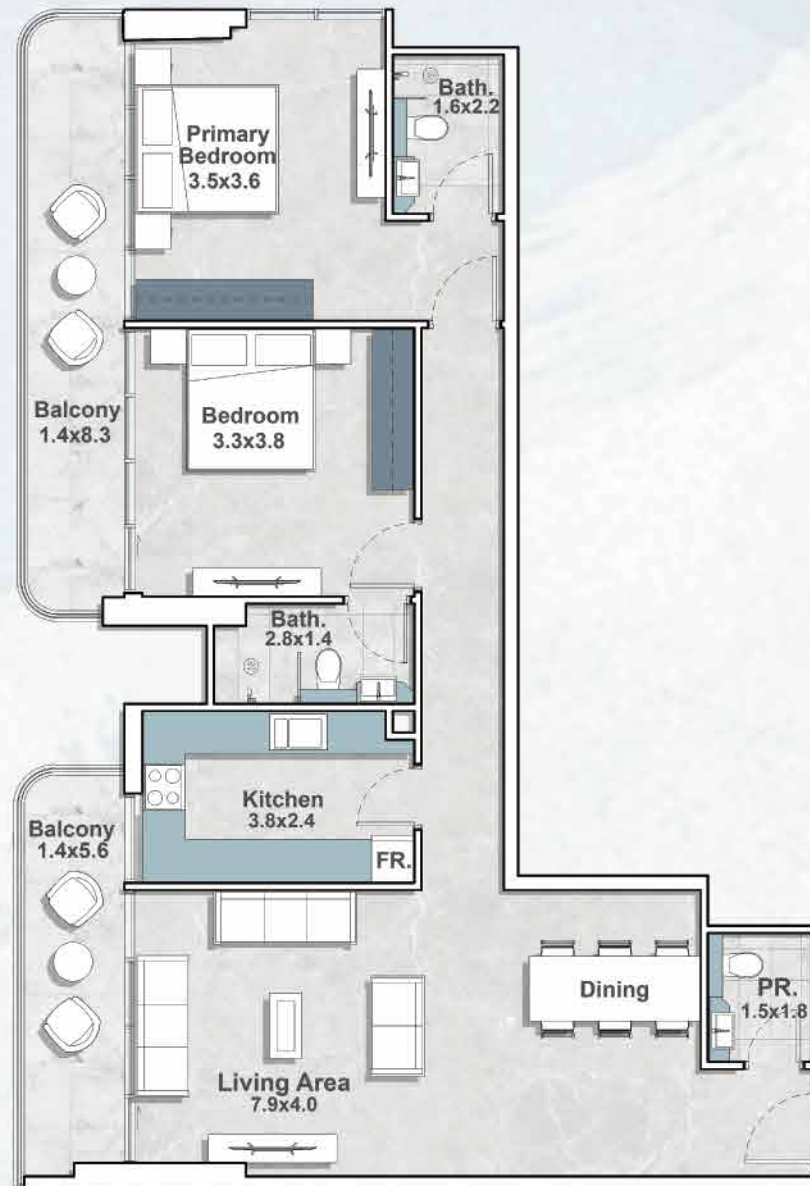
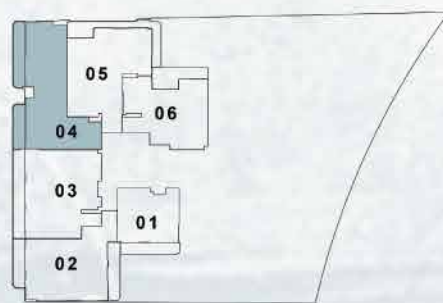
Internal Living Area	:	1113.42	Sq. Ft.
Outdoor Living Area	:	185.03	Sq. Ft.
Total Living Area	:	1298.45	Sq. Ft.

DISCLAIMER : All design, features, amenities, materials, dimensions, layout drawings are approximate and subject to change without prior notice. Actual area of the Unit may vary from the stated area; drawings not to scale. Developer reserves the right to make revisions to comply with any Applicable Law or the requirements of any Relevant Authority. For actual sizes please refer the Unit Reservation Agreement

UNIT 104

2 BEDROOM - TYPE C

1st Floor



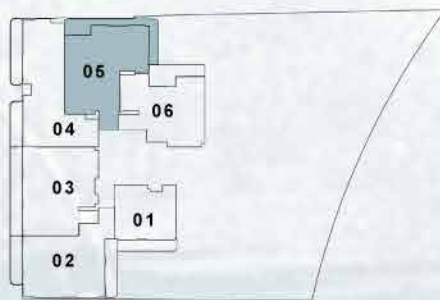
Internal Living Area	:	1088.02 Sq. Ft.
Outdoor Living Area	:	230.46 Sq. Ft.
Total Living Area	:	1318.47 Sq. Ft.

DISCLAIMER : All design, features, amenities, materials, dimensions, layout drawings are approximate and subject to change without prior notice. Actual area of the Unit may vary from the stated area; drawings not to scale. Developer reserves the right to make revisions to comply with any Applicable Law or the requirements of any Relevant Authority. For actual sizes please refer the Unit Reservation Agreement

UNIT 105

2 BEDROOM - TYPE D

1st Floor



Internal Living Area	:	1091.78	Sq. Ft.
Outdoor Living Area	:	216.46	Sq. Ft.
Total Living Area	:	1308.25	Sq. Ft.

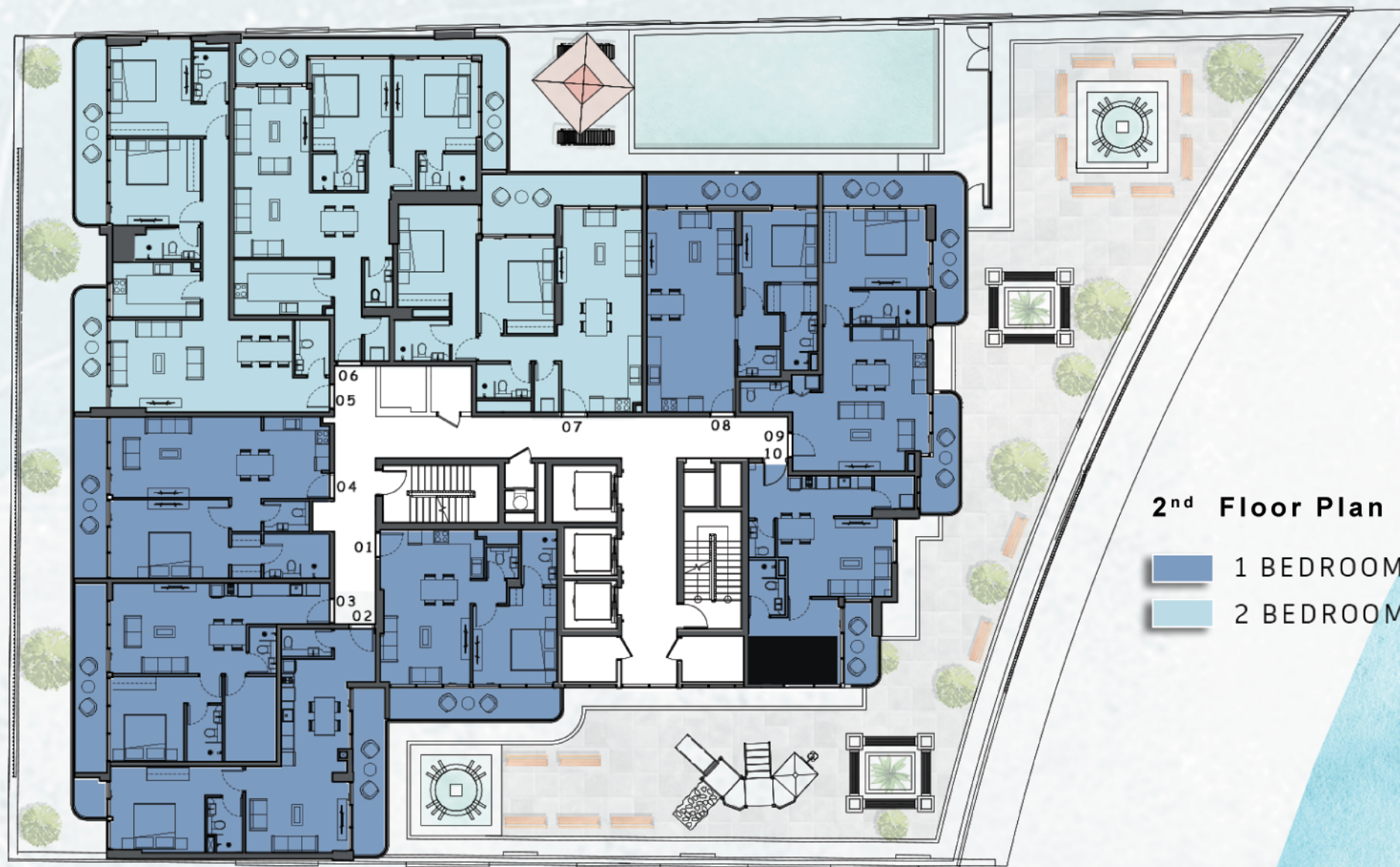
DISCLAIMER : All design, features, amenities, materials, dimensions, layout drawings are approximate and subject to change without prior notice. Actual area of the Unit may vary from the stated area; drawings not to scale. Developer reserves the right to make revisions to comply with any Applicable Law or the requirements of any Relevant Authority. For actual sizes please refer the Unit Reservation Agreement

UNIT 106

2 BEDROOM - TYPE E



DISCLAIMER : All design, features, amenities, materials, dimensions, layout drawings are approximate and subject to change without prior notice. Actual area of the Unit may vary from the stated area; drawings not to scale. Developer reserves the right to make revisions to comply with any Applicable Law or the requirements of any Relevant Authority. For actual sizes please refer the Unit Reservation Agreement



2nd Floor Plan

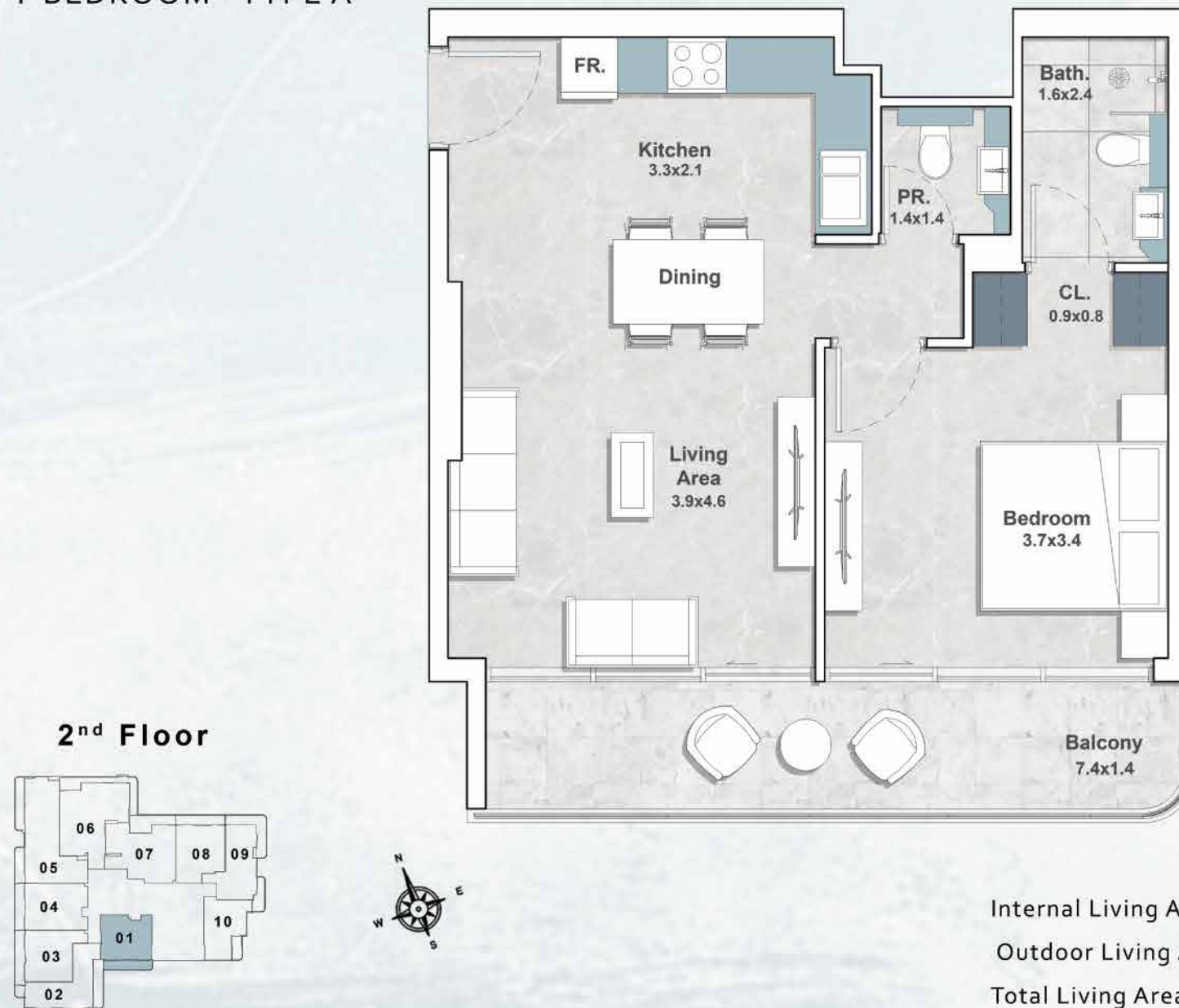
- 1 BEDROOM
- 2 BEDROOM

DUBAI CREEK

DISCLAIMER : All design, features, amenities, materials, dimensions, layout drawings are approximate and subject to change without prior notice. Actual area of the Unit may vary from the stated area; drawings not to scale. Developer reserves the right to make revisions to comply with any Applicable Law or the requirements of any Relevant Authority. For actual sizes please refer the Unit Reservation Agreement

UNIT 201

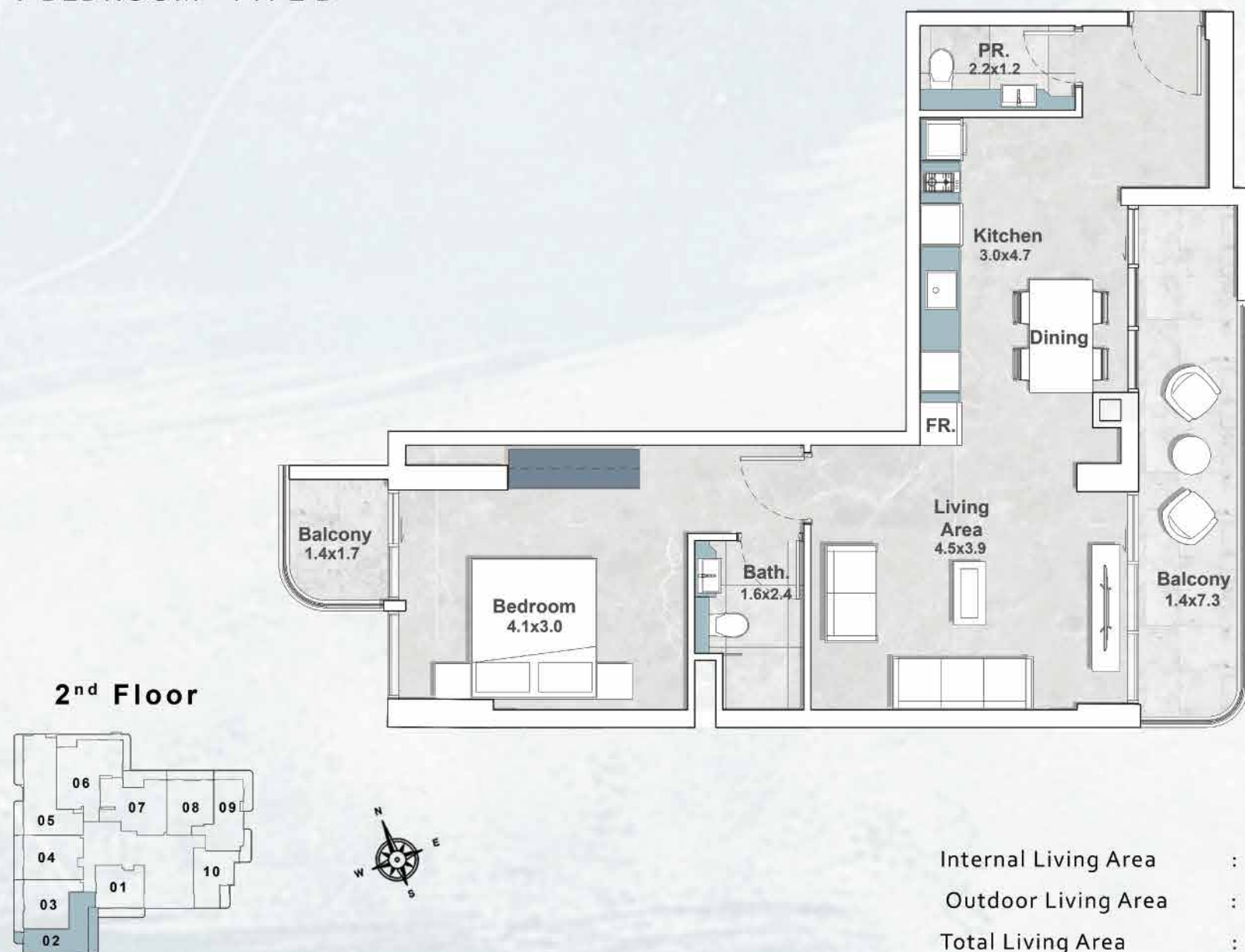
1 BEDROOM - TYPE A



DISCLAIMER : All design, features, amenities, materials, dimensions, layout drawings are approximate and subject to change without prior notice. Actual area of the Unit may vary from the stated area; drawings not to scale. Developer reserves the right to make revisions to comply with any Applicable Law or the requirements of any Relevant Authority. For actual sizes please refer the Unit Reservation Agreement

UNIT 202

1 BEDROOM - TYPE B



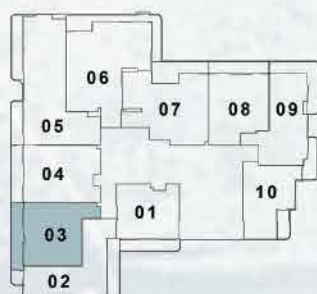
DISCLAIMER : All design, features, amenities, materials, dimensions, layout drawings are approximate and subject to change without prior notice. Actual area of the Unit may vary from the stated area; drawings not to scale. Developer reserves the right to make revisions to comply with any Applicable Law or the requirements of any Relevant Authority. For actual sizes please refer the Unit Reservation Agreement

UNIT 203

1 BEDROOM - TYPE C



2nd Floor

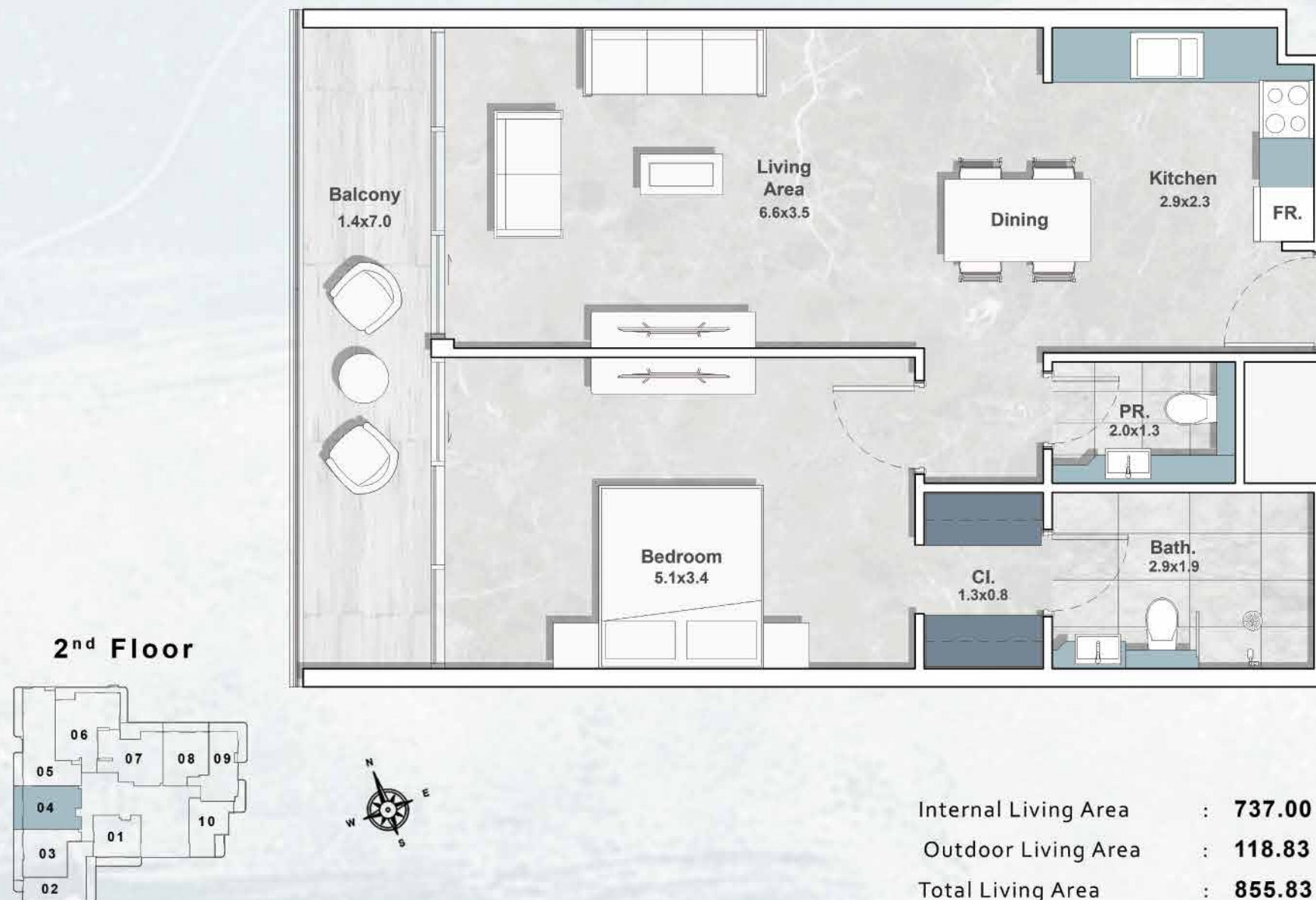


Internal Living Area	:	678.77	Sq. Ft.
Outdoor Living Area	:	140.58	Sq. Ft.
Total Living Area	:	819.35	Sq. Ft.

DISCLAIMER : All design, features, amenities, materials, dimensions, layout drawings are approximate and subject to change without prior notice. Actual area of the Unit may vary from the stated area; drawings not to scale. Developer reserves the right to make revisions to comply with any Applicable Law or the requirements of any Relevant Authority. For actual sizes please refer the Unit Reservation Agreement

UNIT 204

1 BEDROOM - TYPE D

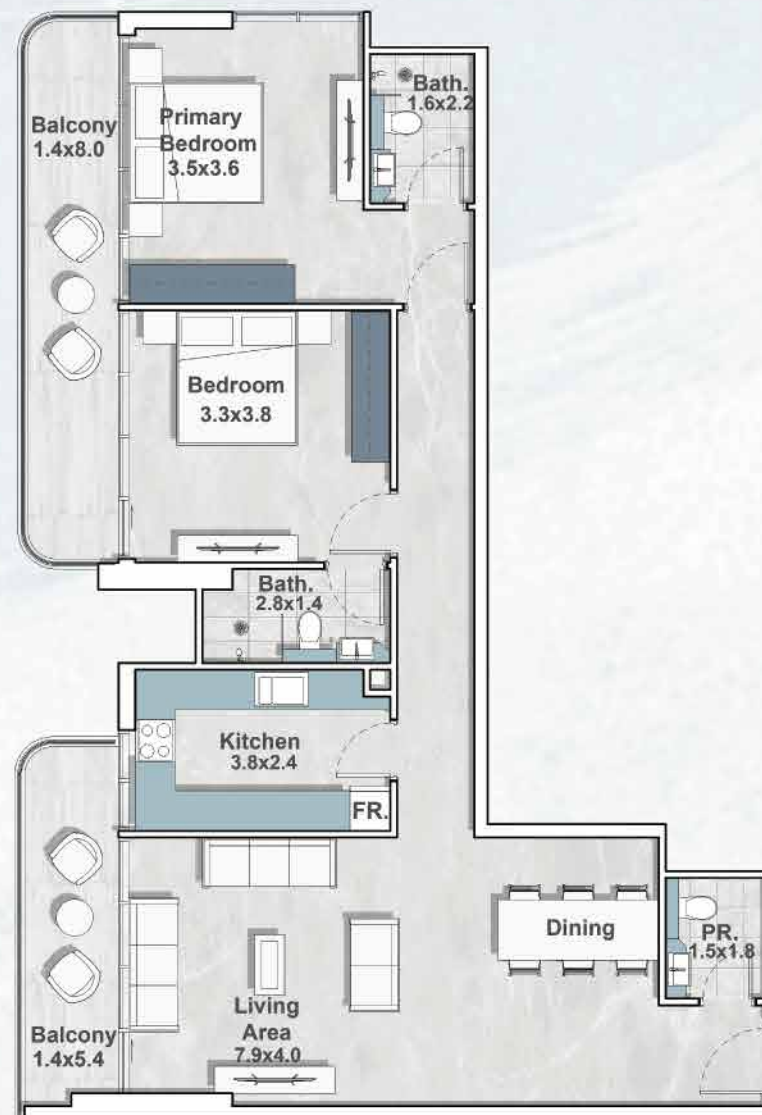
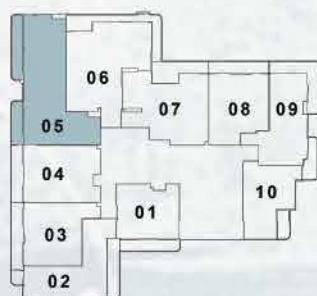


DISCLAIMER : All design, features, amenities, materials, dimensions, layout drawings are approximate and subject to change without prior notice. Actual area of the Unit may vary from the stated area; drawings not to scale. Developer reserves the right to make revisions to comply with any Applicable Law or the requirements of any Relevant Authority. For actual sizes please refer the Unit Reservation Agreement

UNIT 205

2 BEDROOM TYPE C

2nd Floor



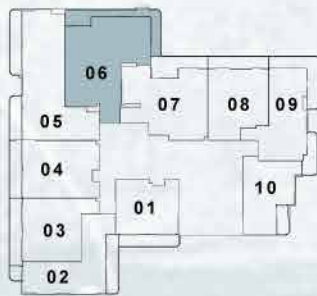
Internal Living Area	:	1110.40 Sq. Ft.
Outdoor Living Area	:	215.92 Sq. Ft.
Total Living Area	:	1326.32 Sq. Ft.

DISCLAIMER : All design, features, amenities, materials, dimensions, layout drawings are approximate and subject to change without prior notice. Actual area of the Unit may vary from the stated area; drawings not to scale. Developer reserves the right to make revisions to comply with any Applicable Law or the requirements of any Relevant Authority. For actual sizes please refer the Unit Reservation Agreement

UNIT 206

2 BEDROOM - TYPE D

2nd Floor

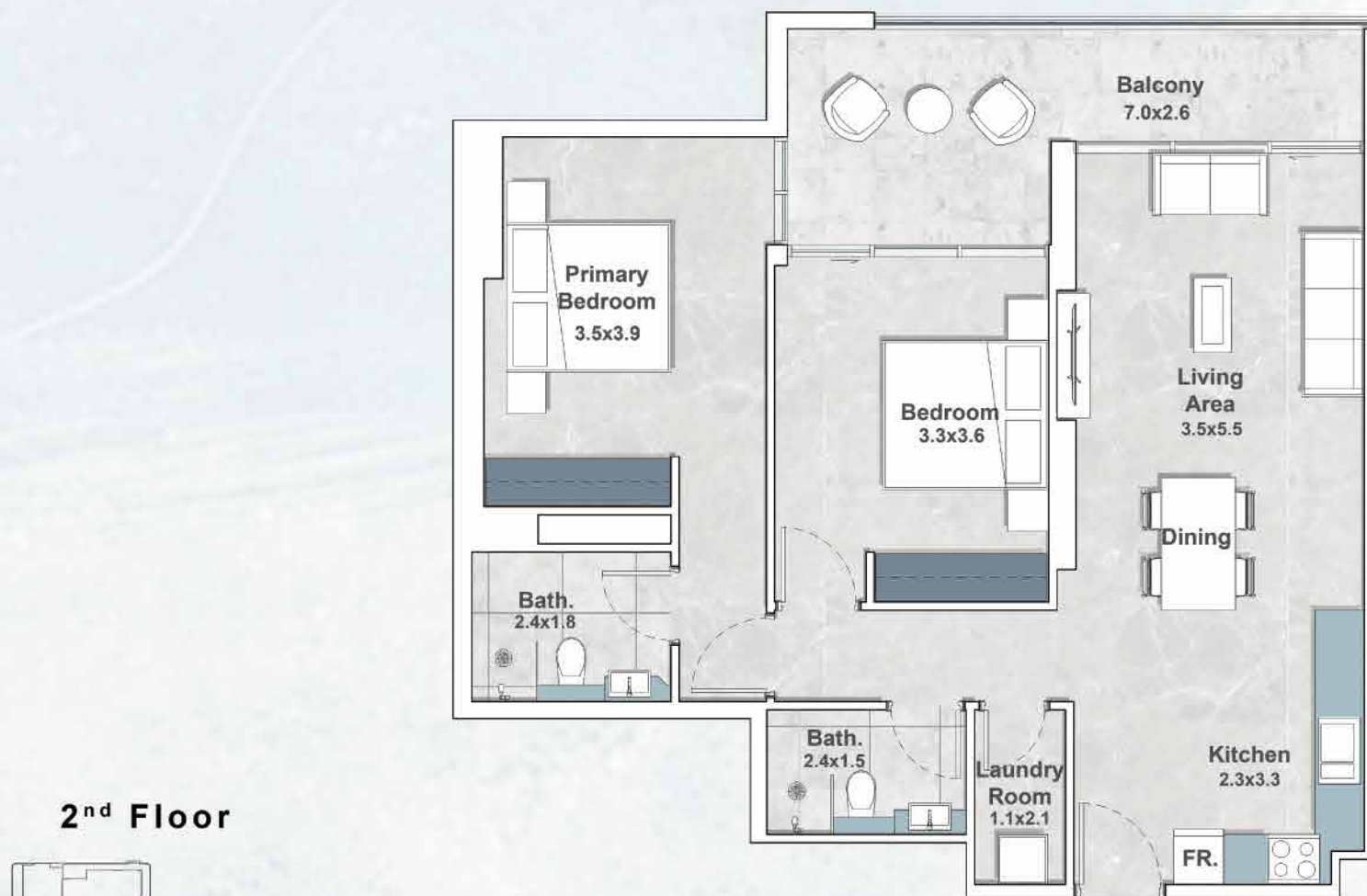


Internal Living Area	:	1094.47	Sq. Ft.
Outdoor Living Area	:	213.13	Sq. Ft.
Total Living Area	:	1326.33	Sq. Ft.

DISCLAIMER : All design, features, amenities, materials, dimensions, layout drawings are approximate and subject to change without prior notice. Actual area of the Unit may vary from the stated area; drawings not to scale. Developer reserves the right to make revisions to comply with any Applicable Law or the requirements of any Relevant Authority. For actual sizes please refer the Unit Reservation Agreement

UNIT 207

2 BEDROOM - TYPE E



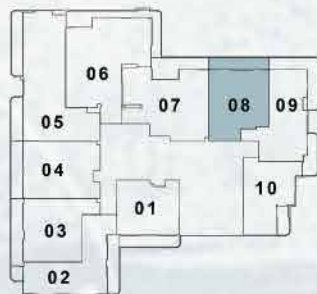
Internal Living Area	:	902.12	Sq. Ft.
Outdoor Living Area	:	159.20	Sq. Ft.
Total Living Area	:	1061.32	Sq. Ft.

DISCLAIMER : All design, features, amenities, materials, dimensions, layout drawings are approximate and subject to change without prior notice. Actual area of the Unit may vary from the stated area; drawings not to scale. Developer reserves the right to make revisions to comply with any Applicable Law or the requirements of any Relevant Authority. For actual sizes please refer the Unit Reservation Agreement

UNIT 208

1 BEDROOM - TYPE D

2nd Floor



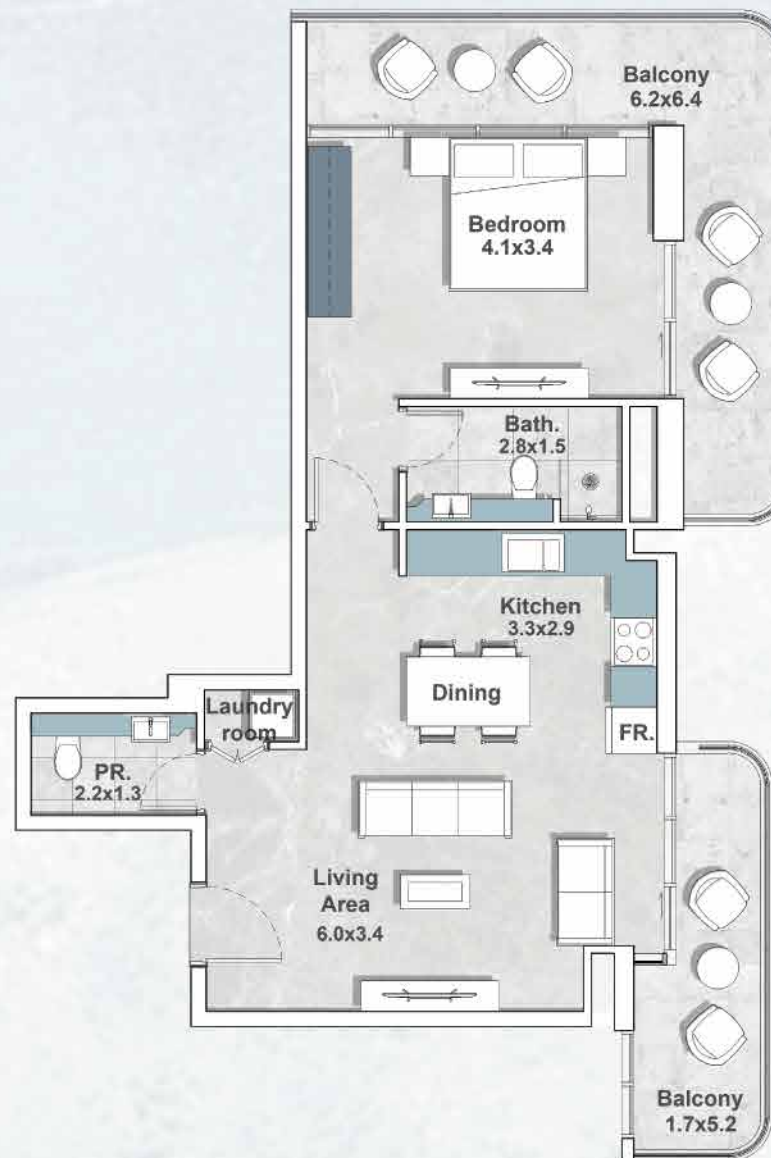
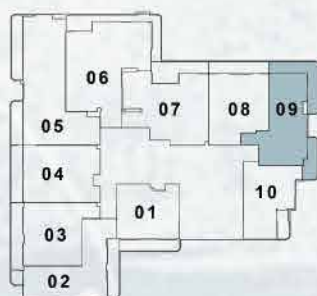
Internal Living Area	:	665.96	Sq. Ft.
Outdoor Living Area	:	122.82	Sq. Ft.
Total Living Area	:	788.78	Sq. Ft.

DISCLAIMER : All design, features, amenities, materials, dimensions, layout drawings are approximate and subject to change without prior notice. Actual area of the Unit may vary from the stated area; drawings not to scale. Developer reserves the right to make revisions to comply with any Applicable Law or the requirements of any Relevant Authority. For actual sizes please refer the Unit Reservation Agreement

UNIT 209

1 BEDROOM - TYPE F

2nd Floor



Internal Living Area	:	677.48	Sq. Ft.
Outdoor Living Area	:	266.94	Sq. Ft.
Total Living Area	:	944.43	Sq. Ft.

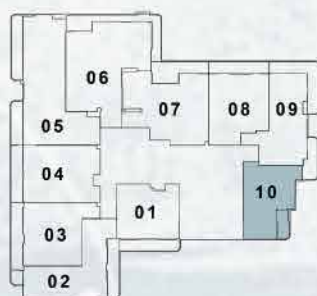
DISCLAIMER : All design, features, amenities, materials, dimensions, layout drawings are approximate and subject to change without prior notice. Actual area of the Unit may vary from the stated area; drawings not to scale. Developer reserves the right to make revisions to comply with any Applicable Law or the requirements of any Relevant Authority. For actual sizes please refer the Unit Reservation Agreement

UNIT 210

1 BEDROOM - TYPE G

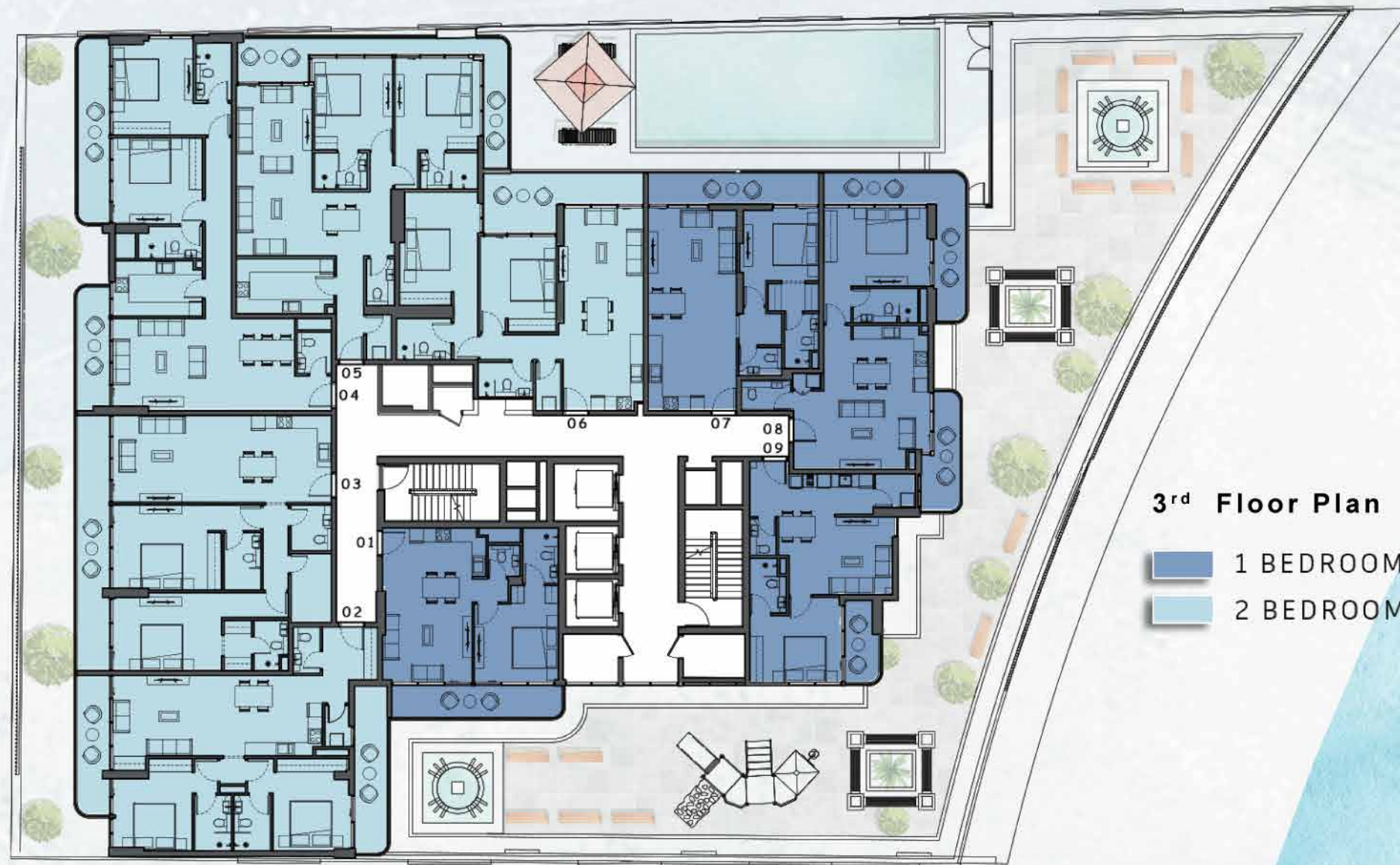


2nd Floor



Internal Living Area	:	580.28 Sq. Ft.
Outdoor Living Area	:	59.95 Sq. Ft.
Total Living Area	:	640.24 Sq. Ft.

DISCLAIMER : All design, features, amenities, materials, dimensions, layout drawings are approximate and subject to change without prior notice. Actual area of the Unit may vary from the stated area; drawings not to scale. Developer reserves the right to make revisions to comply with any Applicable Law or the requirements of any Relevant Authority. For actual sizes please refer the Unit Reservation Agreement



3rd Floor Plan

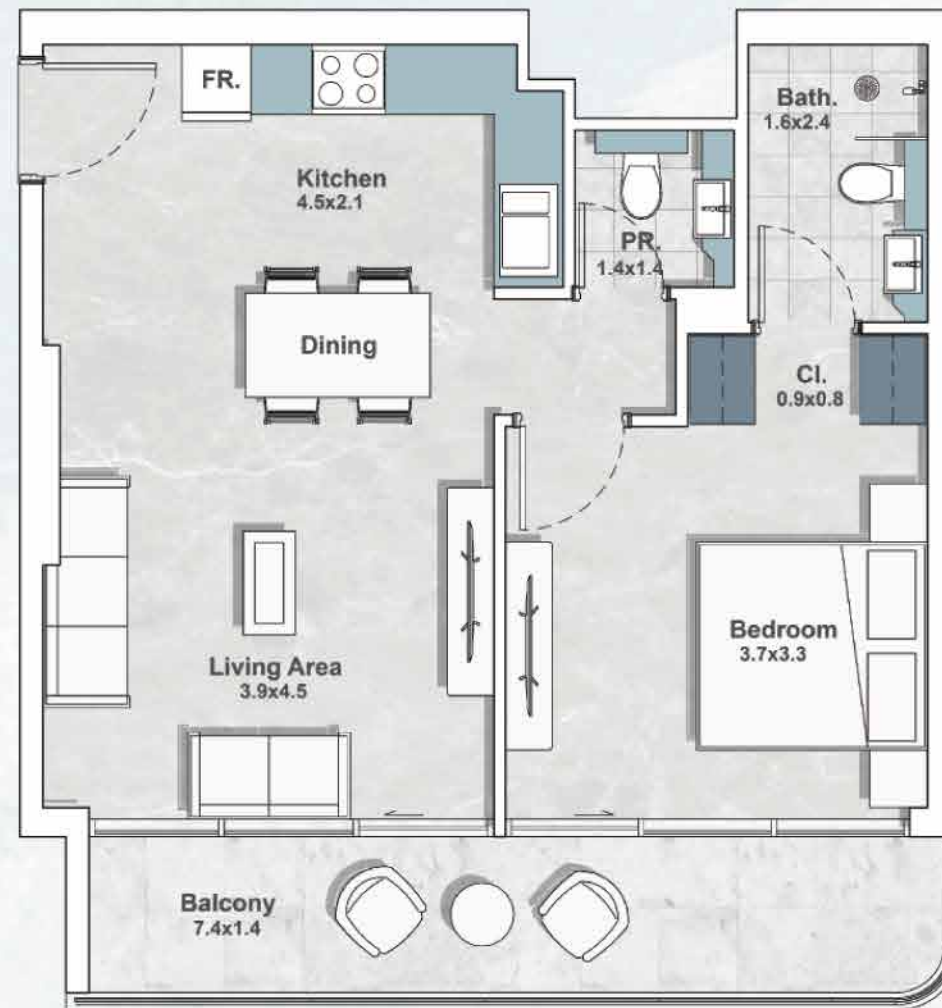
- 1 BEDROOM
- 2 BEDROOM

DUBAI CREEK

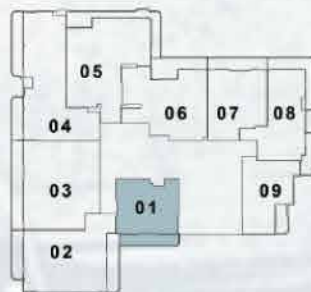
DISCLAIMER : All design, features, amenities, materials, dimensions, layout drawings are approximate and subject to change without prior notice. Actual area of the Unit may vary from the stated area; drawings not to scale. Developer reserves the right to make revisions to comply with any Applicable Law or the requirements of any Relevant Authority. For actual sizes please refer the Unit Reservation Agreement

UNIT 301

1 BEDROOM - TYPE A



3rd Floor



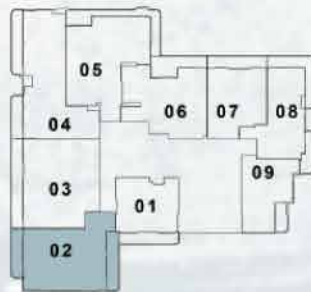
Internal Living Area	:	570.59	Sq. Ft.
Outdoor Living Area	:	119.80	Sq. Ft.
Total Living Area	:	690.39	Sq. Ft.

UNIT 302

2 BEDROOM - TYPE A



3rd Floor



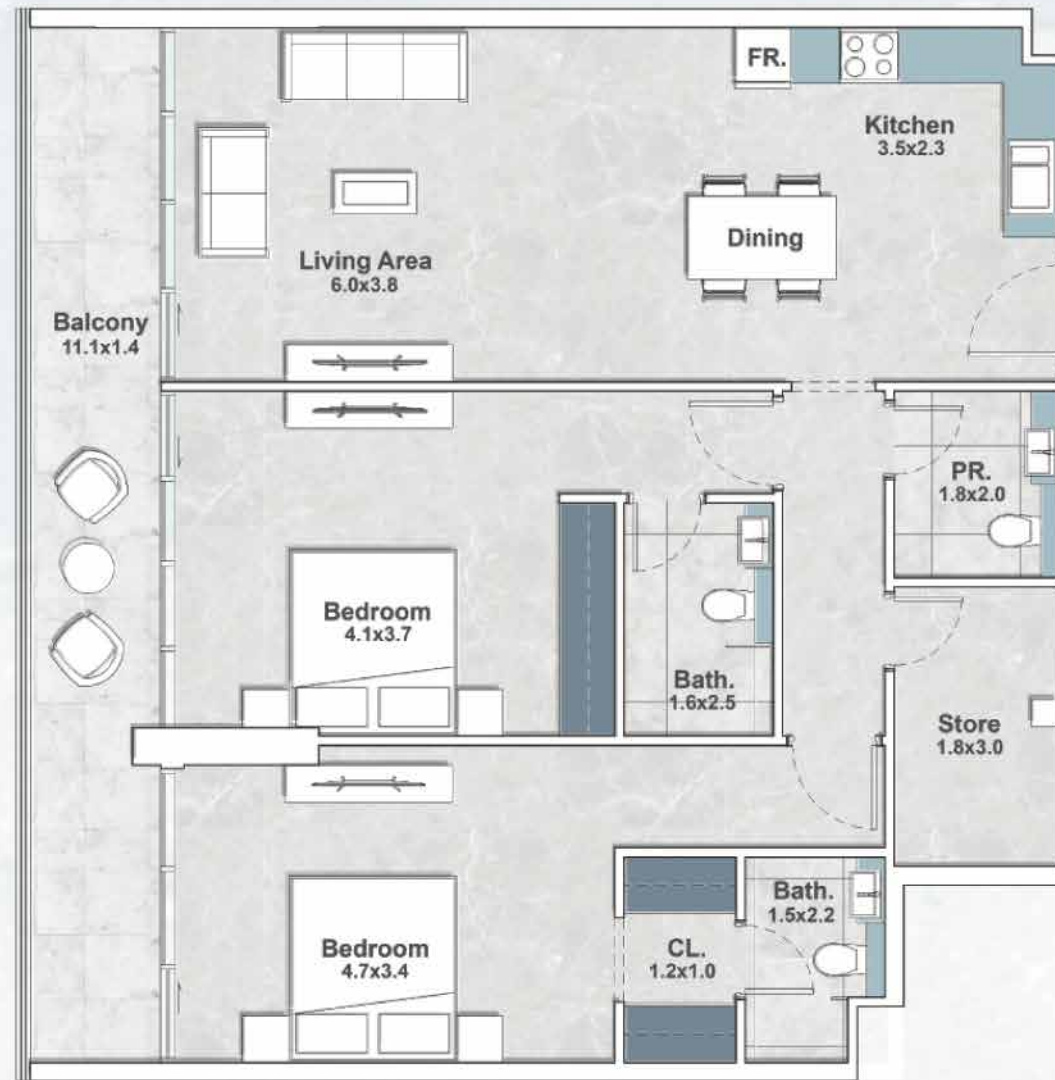
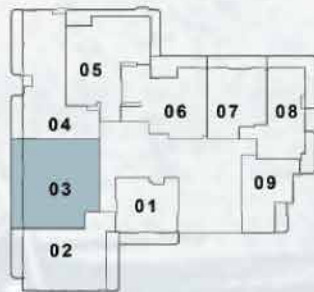
Internal Living Area	:	966.92	Sq. Ft.
Outdoor Living Area	:	226.15	Sq. Ft.
Total Living Area	:	1193.07	Sq. Ft.

DISCLAIMER : All design, features, amenities, materials, dimensions, layout drawings are approximate and subject to change without prior notice. Actual area of the Unit may vary from the stated area; drawings not to scale. Developer reserves the right to make revisions to comply with any Applicable Law or the requirements of any Relevant Authority. For actual sizes please refer the Unit Reservation Agreement

UNIT 303

2 BEDROOM - TYPE B₁

3rd Floor



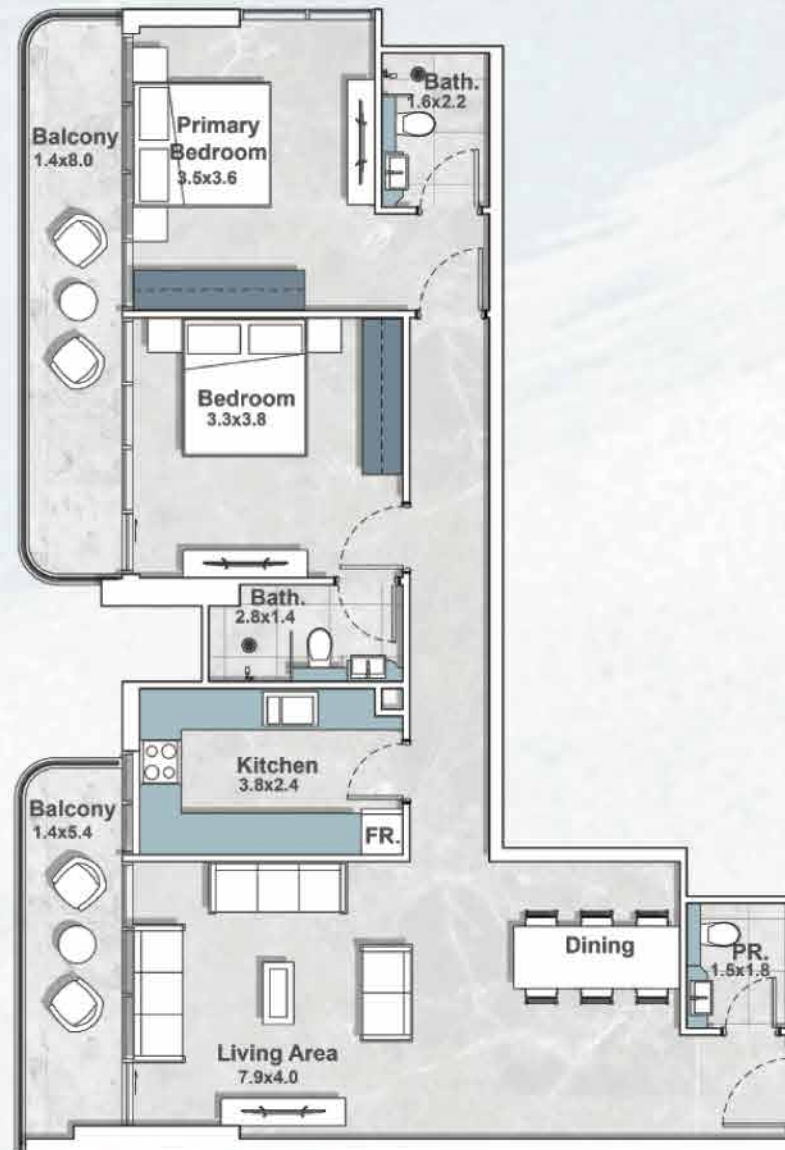
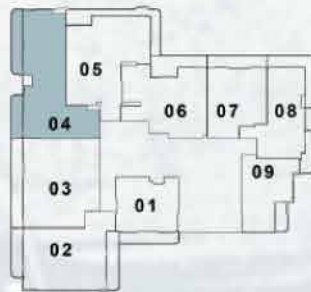
Internal Living Area	:	1133.44	Sq. Ft.
Outdoor Living Area	:	185.57	Sq. Ft.
Total Living Area	:	1319.01	Sq. Ft.

DISCLAIMER : All design, features, amenities, materials, dimensions, layout drawings are approximate and subject to change without prior notice. Actual area of the Unit may vary from the stated area; drawings not to scale. Developer reserves the right to make revisions to comply with any Applicable Law or the requirements of any Relevant Authority. For actual sizes please refer the Unit Reservation Agreement

UNIT 304

2 BEDROOM - TYPE C

3rd Floor



Internal Living Area	:	1094.90	Sq. Ft.
Outdoor Living Area	:	216.68	Sq. Ft.
Total Living Area	:	1311.58	Sq. Ft.

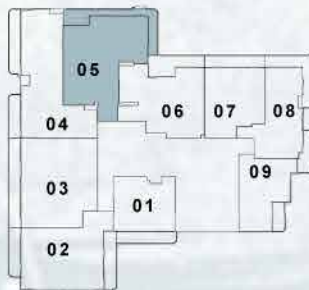
DISCLAIMER : All design, features, amenities, materials, dimensions, layout drawings are approximate and subject to change without prior notice. Actual area of the Unit may vary from the stated area; drawings not to scale. Developer reserves the right to make revisions to comply with any Applicable Law or the requirements of any Relevant Authority. For actual sizes please refer the Unit Reservation Agreement

UNIT 305

2 BEDROOM - TYPE D



3rd Floor



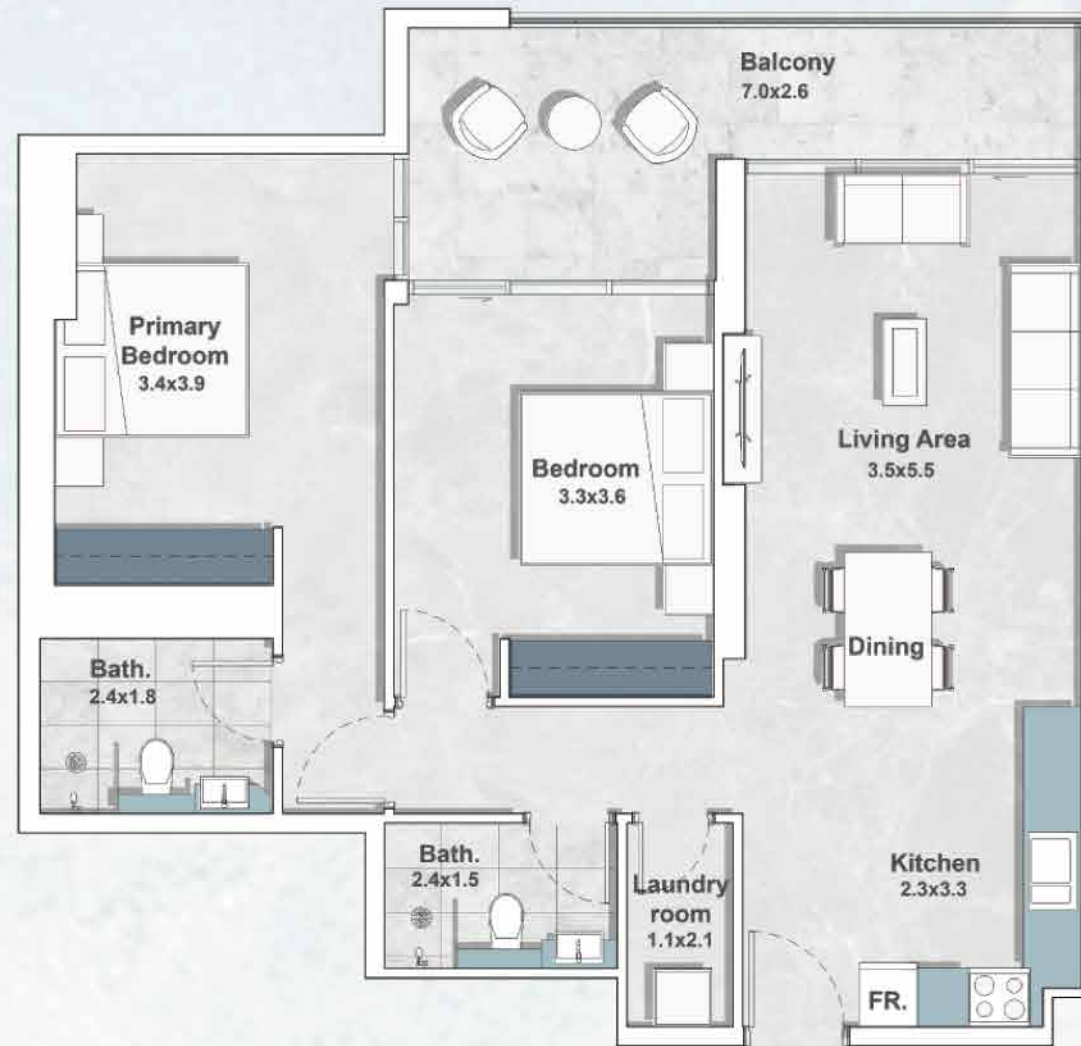
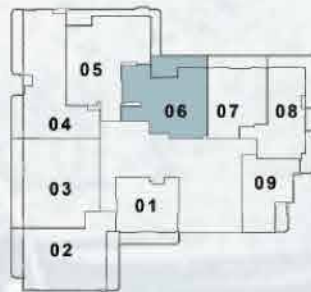
Internal Living Area	:	1094.58 Sq. Ft.
Outdoor Living Area	:	213.34 Sq. Ft.
Total Living Area	:	1307.92 Sq. Ft.

DISCLAIMER : All design, features, amenities, materials, dimensions, layout drawings are approximate and subject to change without prior notice. Actual area of the Unit may vary from the stated area; drawings not to scale. Developer reserves the right to make revisions to comply with any Applicable Law or the requirements of any Relevant Authority. For actual sizes please refer the Unit Reservation Agreement

UNIT 306

2 BEDROOM - TYPE E

3rd Floor



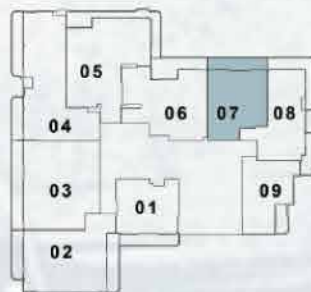
Internal Living Area	:	902.12	Sq. Ft.
Outdoor Living Area	:	159.20	Sq. Ft.
Total Living Area	:	1061.32	Sq. Ft.

DISCLAIMER : All design, features, amenities, materials, dimensions, layout drawings are approximate and subject to change without prior notice. Actual area of the Unit may vary from the stated area; drawings not to scale. Developer reserves the right to make revisions to comply with any Applicable Law or the requirements of any Relevant Authority. For actual sizes please refer the Unit Reservation Agreement

UNIT 307

1 BEDROOM - TYPE E

3rd Floor



Internal Living Area	:	665.96	Sq. Ft.
Outdoor Living Area	:	122.82	Sq. Ft.
Total Living Area	:	788.78	Sq. Ft.

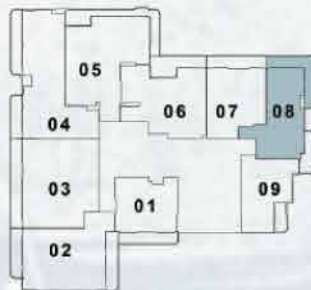
DISCLAIMER : All design, features, amenities, materials, dimensions, layout drawings are approximate and subject to change without prior notice. Actual area of the Unit may vary from the stated area; drawings not to scale. Developer reserves the right to make revisions to comply with any Applicable Law or the requirements of any Relevant Authority. For actual sizes please refer the Unit Reservation Agreement

UNIT 308

1 BEDROOM - TYPE F



3rd Floor



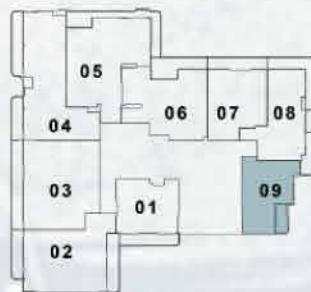
Internal Living Area	:	677.70	Sq. Ft.
Outdoor Living Area	:	267.16	Sq. Ft.
Total Living Area	:	944.86	Sq. Ft.

DISCLAIMER : All design, features, amenities, materials, dimensions, layout drawings are approximate and subject to change without prior notice. Actual area of the Unit may vary from the stated area; drawings not to scale. Developer reserves the right to make revisions to comply with any Applicable Law or the requirements of any Relevant Authority. For actual sizes please refer the Unit Reservation Agreement

UNIT 309

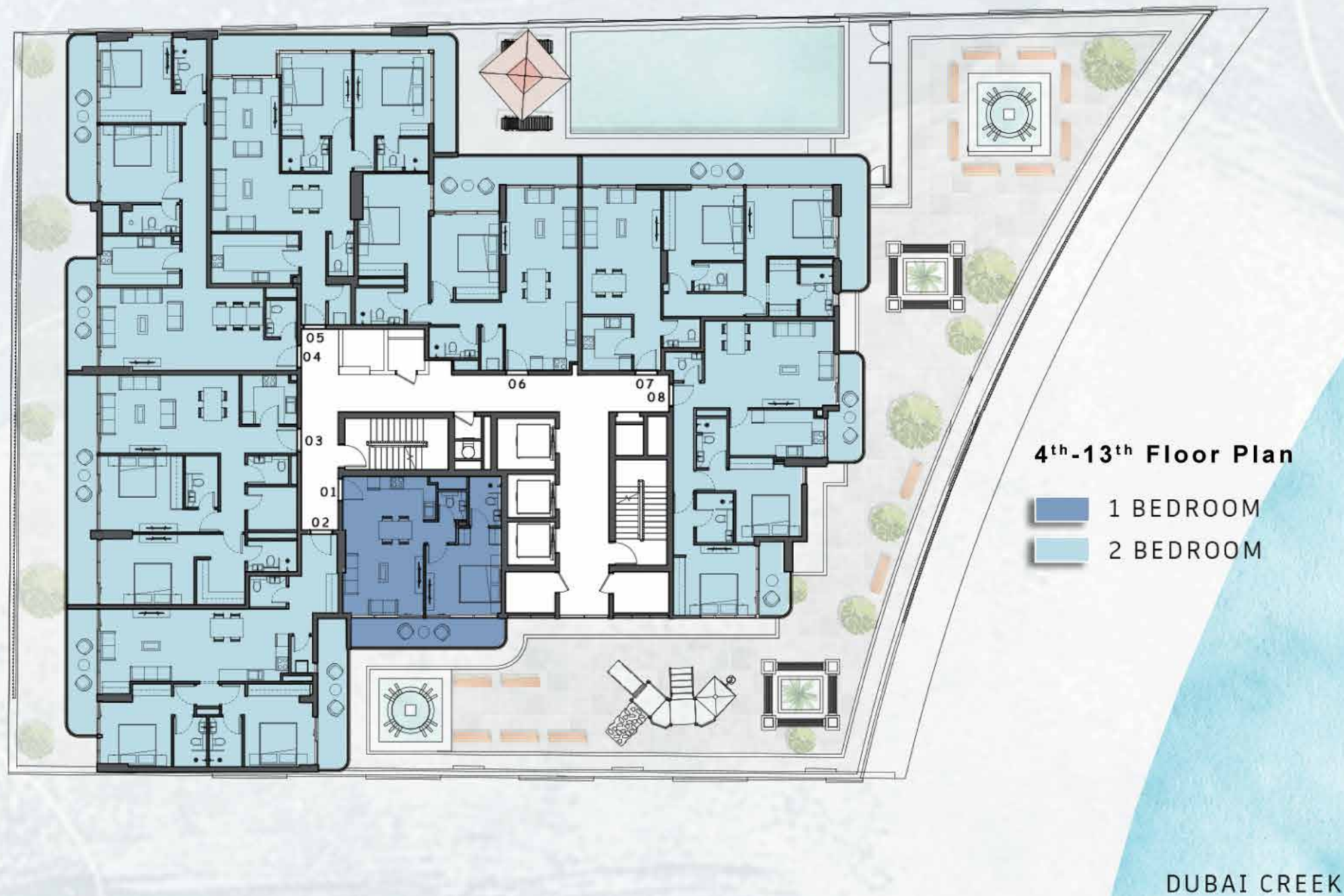
1 BEDROOM - TYPE G

3rd Floor



Internal Living Area	: 578.34 Sq. Ft.
Outdoor Living Area	: 61.57 Sq. Ft.
Total Living Area	: 639.91 Sq. Ft.

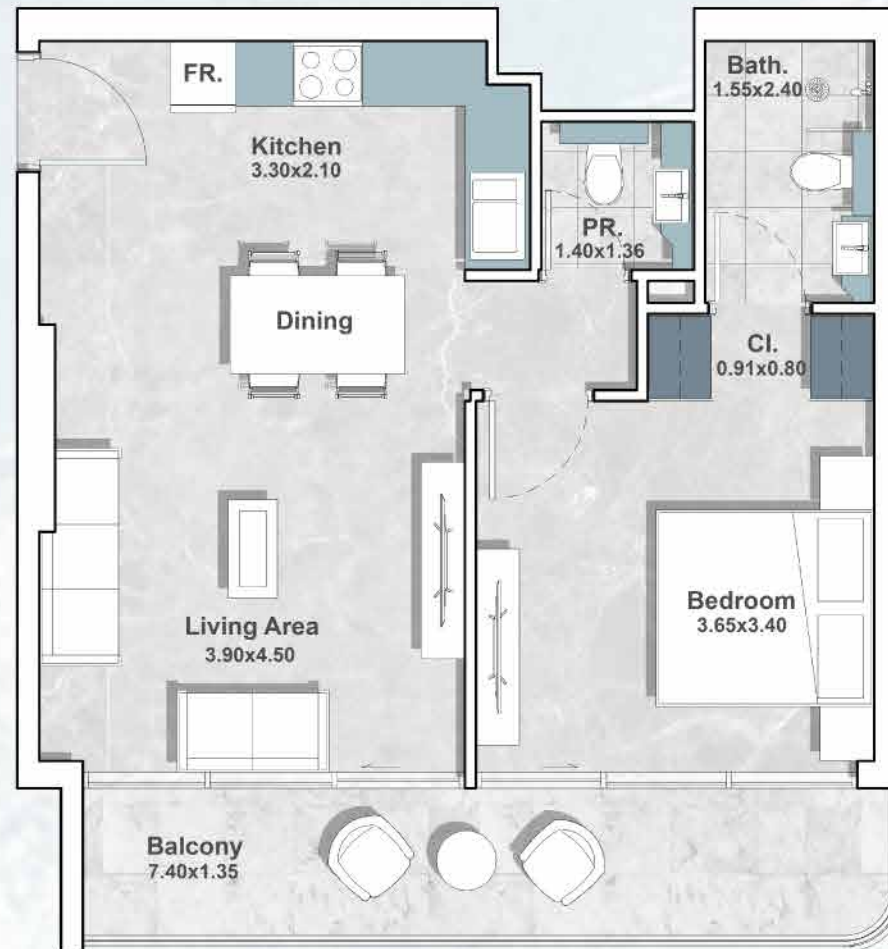
DISCLAIMER : All design, features, amenities, materials, dimensions, layout drawings are approximate and subject to change without prior notice. Actual area of the Unit may vary from the stated area; drawings not to scale. Developer reserves the right to make revisions to comply with any Applicable Law or the requirements of any Relevant Authority. For actual sizes please refer the Unit Reservation Agreement



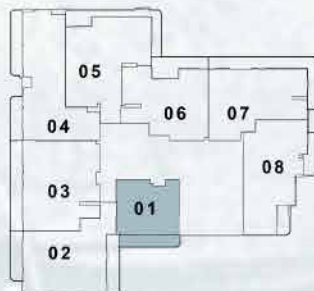
DISCLAIMER : All design, features, amenities, materials, dimensions, layout drawings are approximate and subject to change without prior notice. Actual area of the Unit may vary from the stated area; drawings not to scale. Developer reserves the right to make revisions to comply with any Applicable Law or the requirements of any Relevant Authority. For actual sizes please refer the Unit Reservation Agreement

UNIT 401-1301

1 BEDROOM -TYPE A



4th-13th Floor

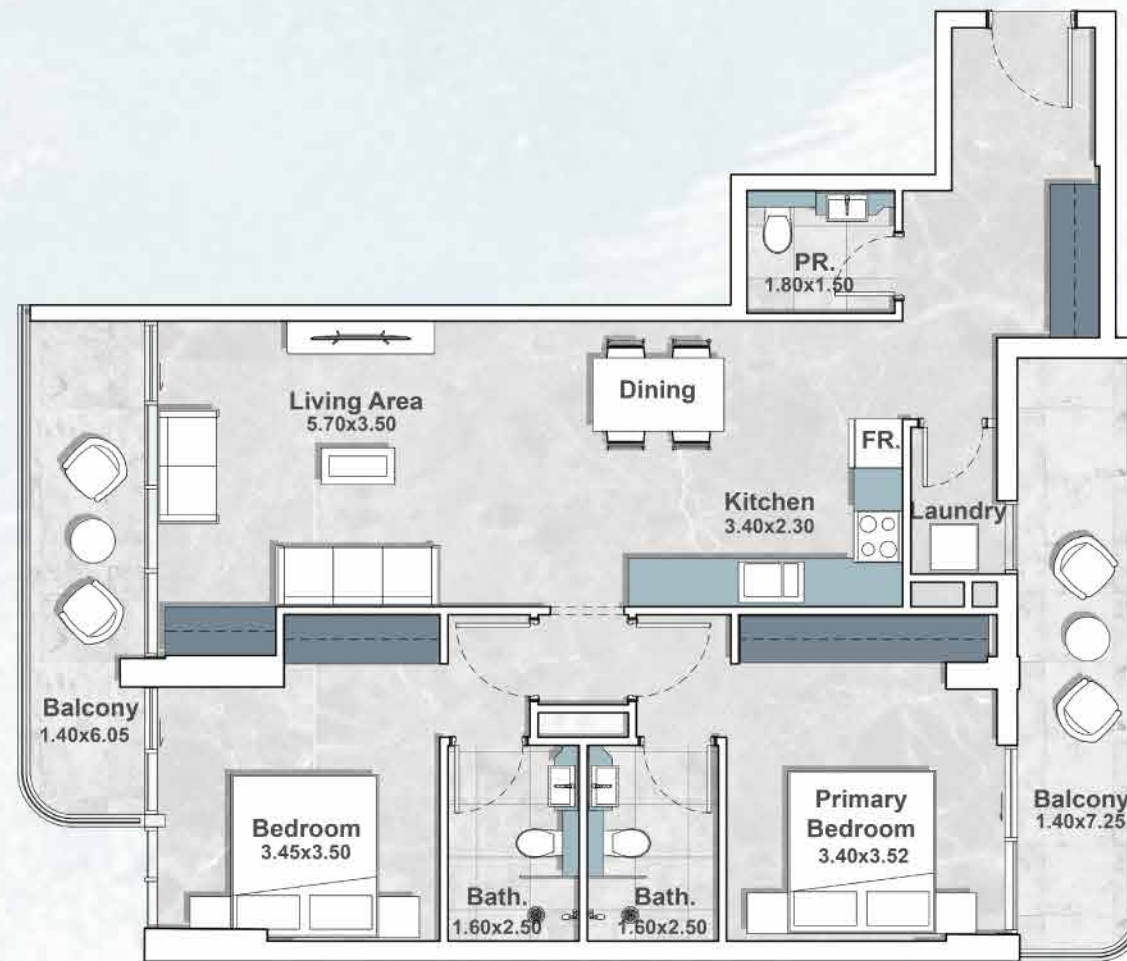


Internal Living Area	:	570.59 Sq. Ft.
Outdoor Living Area	:	119.80 Sq. Ft.
Total Living Area	:	690.40 Sq. Ft.

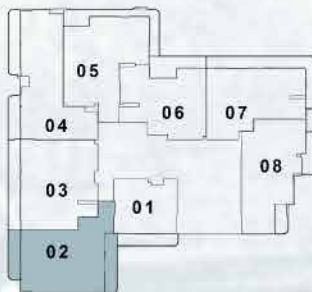
DISCLAIMER : All design, features, amenities, materials, dimensions, layout drawings are approximate and subject to change without prior notice. Actual area of the Unit may vary from the stated area; drawings not to scale. Developer reserves the right to make revisions to comply with any Applicable Law or the requirements of any Relevant Authority. For actual sizes please refer the Unit Reservation Agreement

UNIT 402-1302

2 BEDROOM -TYPE A



4th-13th Floor



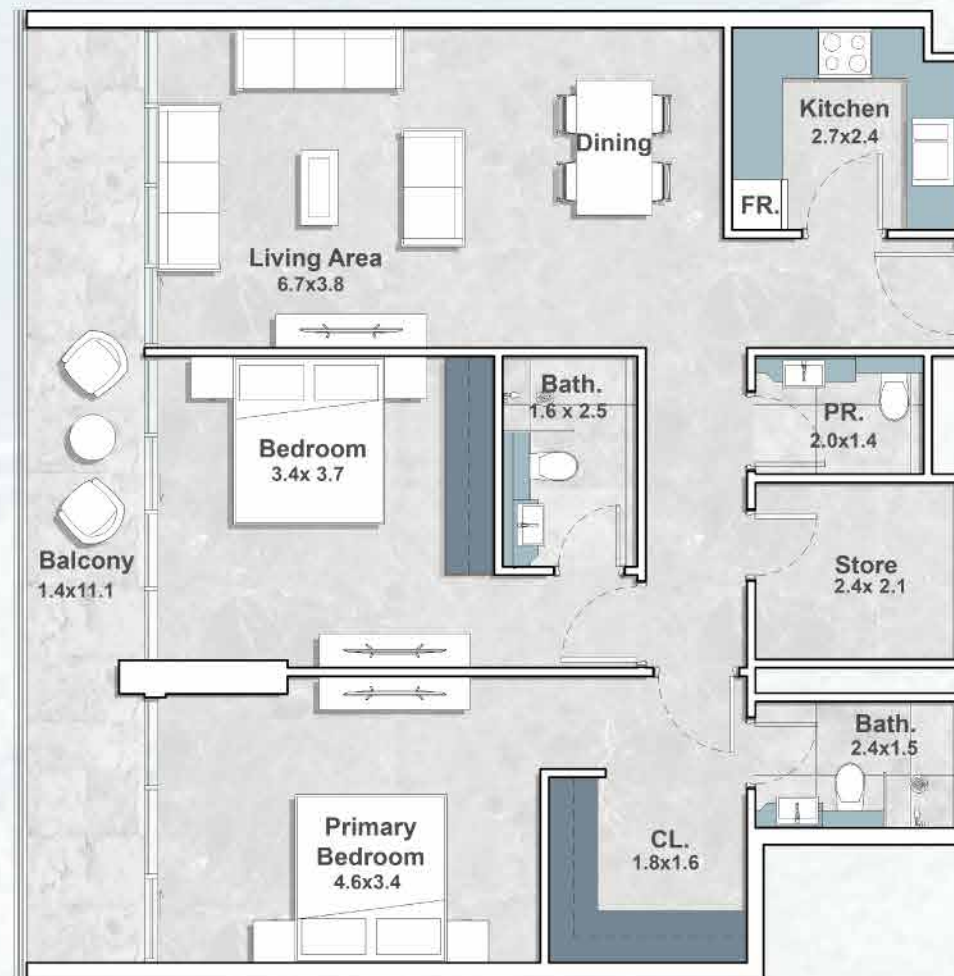
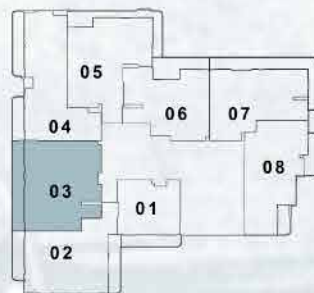
Internal Living Area	:	1000.51	Sq. Ft.
Outdoor Living Area	:	226.15	Sq. Ft.
Total Living Area	:	1226.66	Sq. Ft.

DISCLAIMER : All design, features, amenities, materials, dimensions, layout drawings are approximate and subject to change without prior notice. Actual area of the Unit may vary from the stated area; drawings not to scale. Developer reserves the right to make revisions to comply with any Applicable Law or the requirements of any Relevant Authority. For actual sizes please refer the Unit Reservation Agreement

UNIT 403-1303

2 BEDROOM -TYPE B

4th-13th Floor



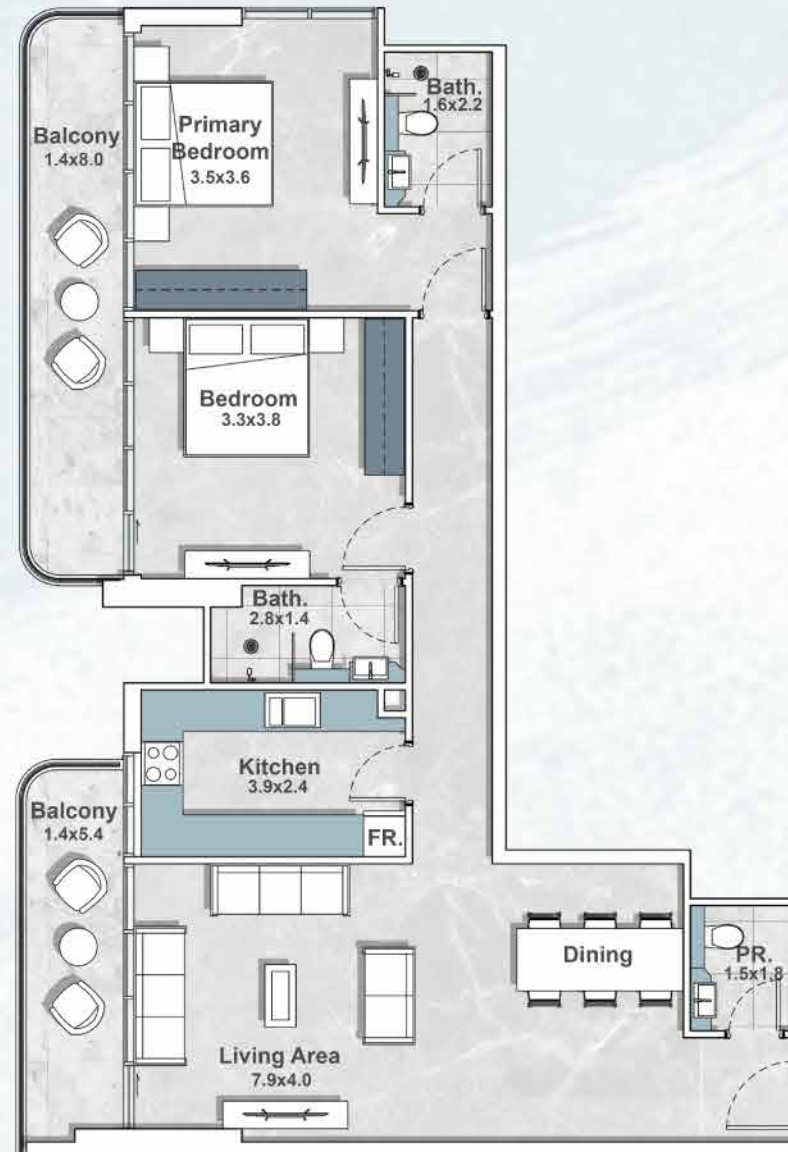
Internal Living Area	:	1118.16 Sq. Ft.
Outdoor Living Area	:	185.57 Sq. Ft.
Total Living Area	:	1303.72 Sq. Ft.

DISCLAIMER : All design, features, amenities, materials, dimensions, layout drawings are approximate and subject to change without prior notice. Actual area of the Unit may vary from the stated area; drawings not to scale. Developer reserves the right to make revisions to comply with any Applicable Law or the requirements of any Relevant Authority. For actual sizes please refer the Unit Reservation Agreement

UNIT 404-1304

2 BEDROOM -TYPE C

4th-13th Floor



Internal Living Area	:	1095.44	Sq. Ft.
Outdoor Living Area	:	216.57	Sq. Ft.
Total Living Area	:	1312.01	Sq. Ft.

DISCLAIMER : All design, features, amenities, materials, dimensions, layout drawings are approximate and subject to change without prior notice. Actual area of the Unit may vary from the stated area; drawings not to scale. Developer reserves the right to make revisions to comply with any Applicable Law or the requirements of any Relevant Authority. For actual sizes please refer the Unit Reservation Agreement

UNIT 405-1305

2 BEDROOM -TYPE D



4th-13th Floor



Internal Living Area	: 1094.90 Sq. Ft.
Outdoor Living Area	: 213.13 Sq. Ft.
Total Living Area	: 1308.03 Sq. Ft.

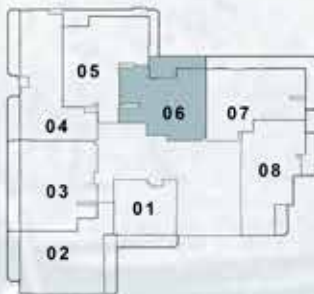
DISCLAIMER : All design, features, amenities, materials, dimensions, layout drawings are approximate and subject to change without prior notice. Actual area of the Unit may vary from the stated area; drawings not to scale. Developer reserves the right to make revisions to comply with any Applicable Law or the requirements of any Relevant Authority. For actual sizes please refer the Unit Reservation Agreement

UNIT 406-1306

2 BEDROOM -TYPE E



4th-13th Floor

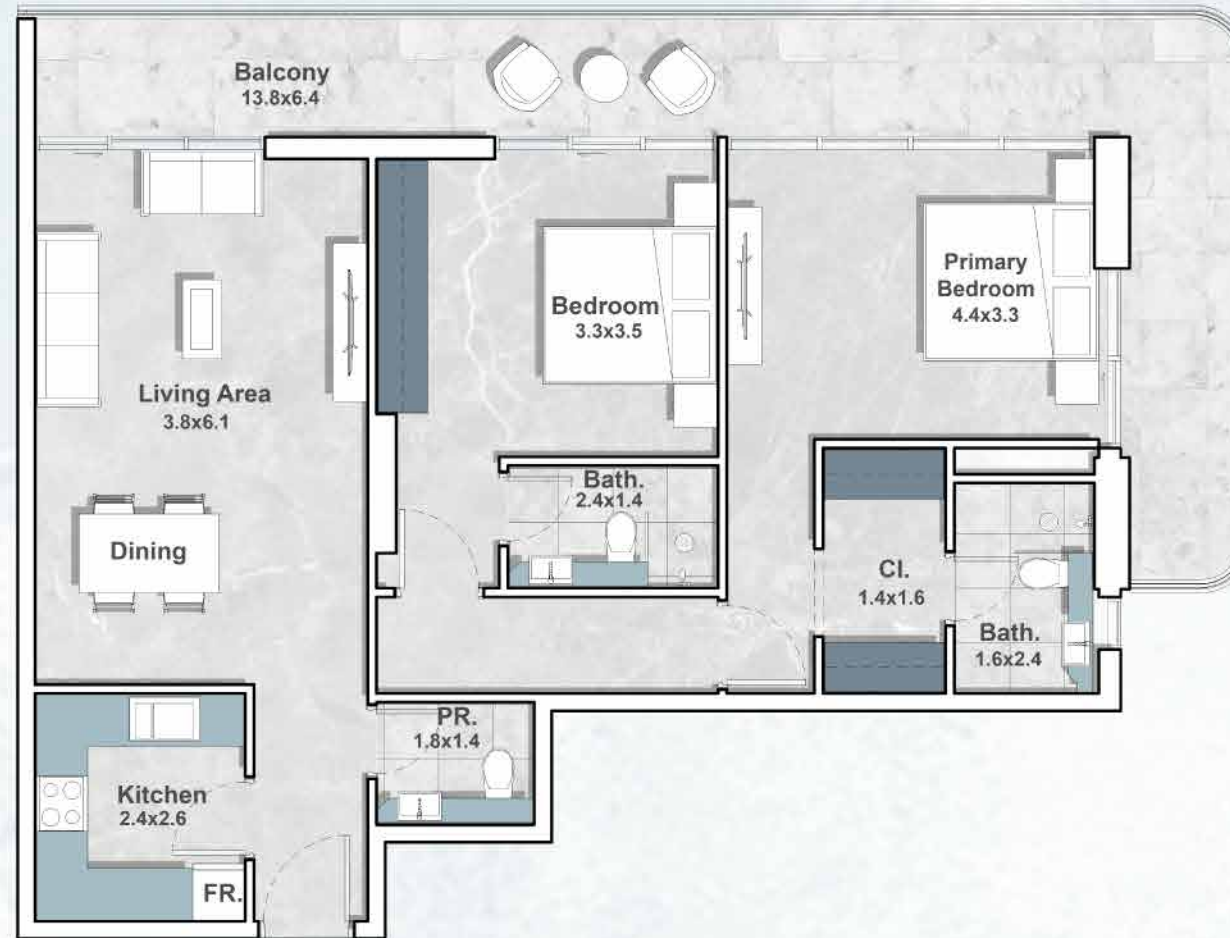


Internal Living Area	:	901.80	Sq. Ft.
Outdoor Living Area	:	159.20	Sq. Ft.
Total Living Area	:	1061.00	Sq. Ft.

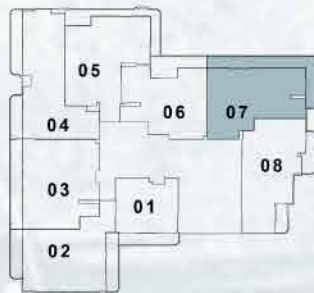
DISCLAIMER : All design, features, amenities, materials, dimensions, layout drawings are approximate and subject to change without prior notice. Actual area of the Unit may vary from the stated area; drawings not to scale. Developer reserves the right to make revisions to comply with any Applicable Law or the requirements of any Relevant Authority. For actual sizes please refer the Unit Reservation Agreement

UNIT 407-1307

2 BEDROOM -TYPE F



4th Floor



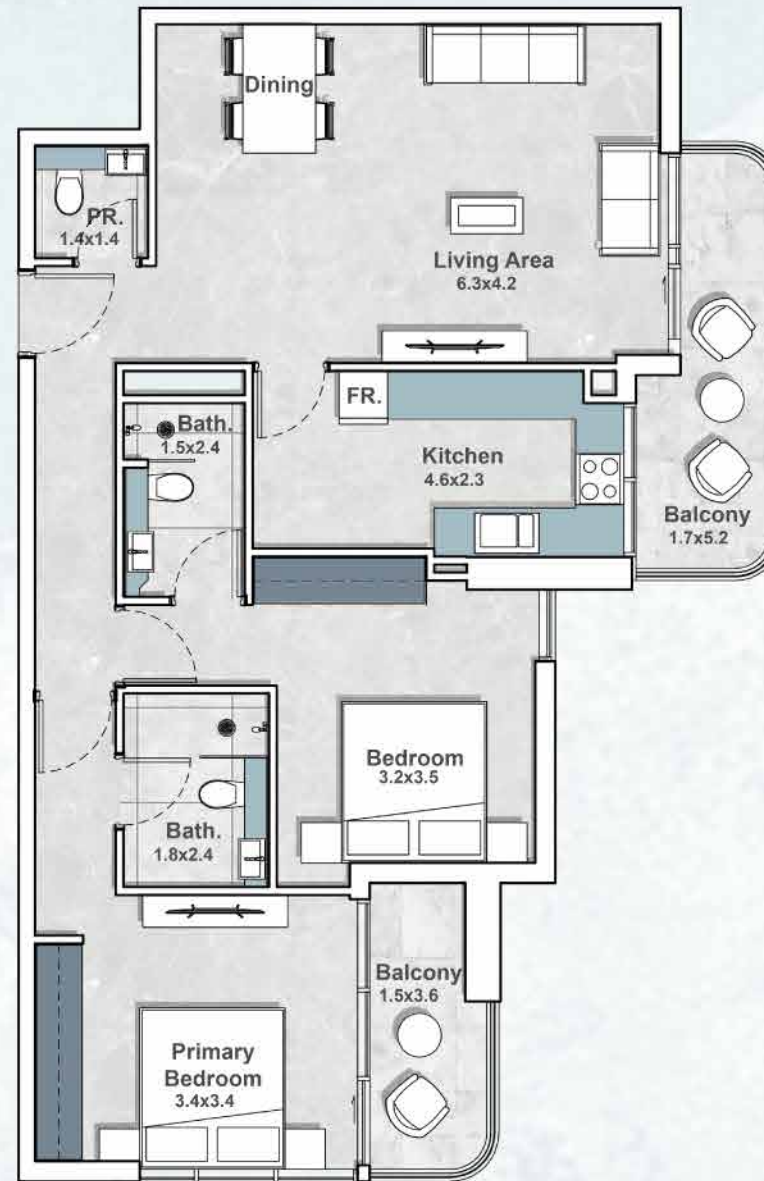
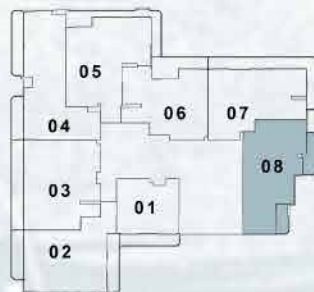
Internal Living Area	:	988.77	Sq. Ft.
Outdoor Living Area	:	302.68	Sq. Ft.
Total Living Area	:	1291.45	Sq. Ft.

DISCLAIMER : All design, features, amenities, materials, dimensions, layout drawings are approximate and subject to change without prior notice. Actual area of the Unit may vary from the stated area; drawings not to scale. Developer reserves the right to make revisions to comply with any Applicable Law or the requirements of any Relevant Authority. For actual sizes please refer the Unit Reservation Agreement

UNIT 408-1308

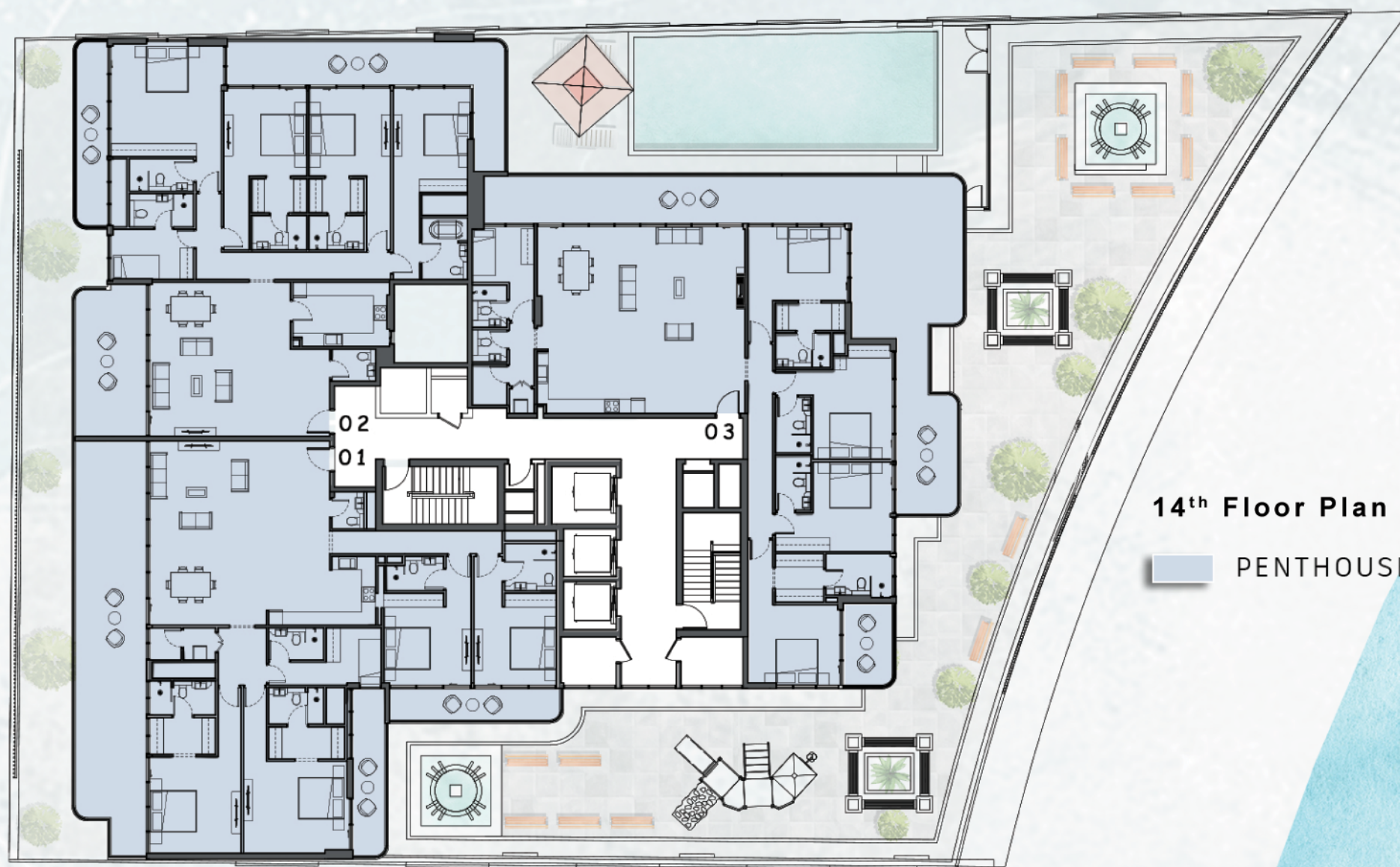
2 BEDROOM -TYPE G

4th-13th Floor

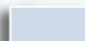


Internal Living Area	:	979.09	Sq. Ft.
Outdoor Living Area	:	145.31	Sq. Ft.
Total Living Area	:	1124.40	Sq. Ft.

DISCLAIMER : All design, features, amenities, materials, dimensions, layout drawings are approximate and subject to change without prior notice. Actual area of the Unit may vary from the stated area; drawings not to scale. Developer reserves the right to make revisions to comply with any Applicable Law or the requirements of any Relevant Authority. For actual sizes please refer the Unit Reservation Agreement



14th Floor Plan

 PENTHOUSE

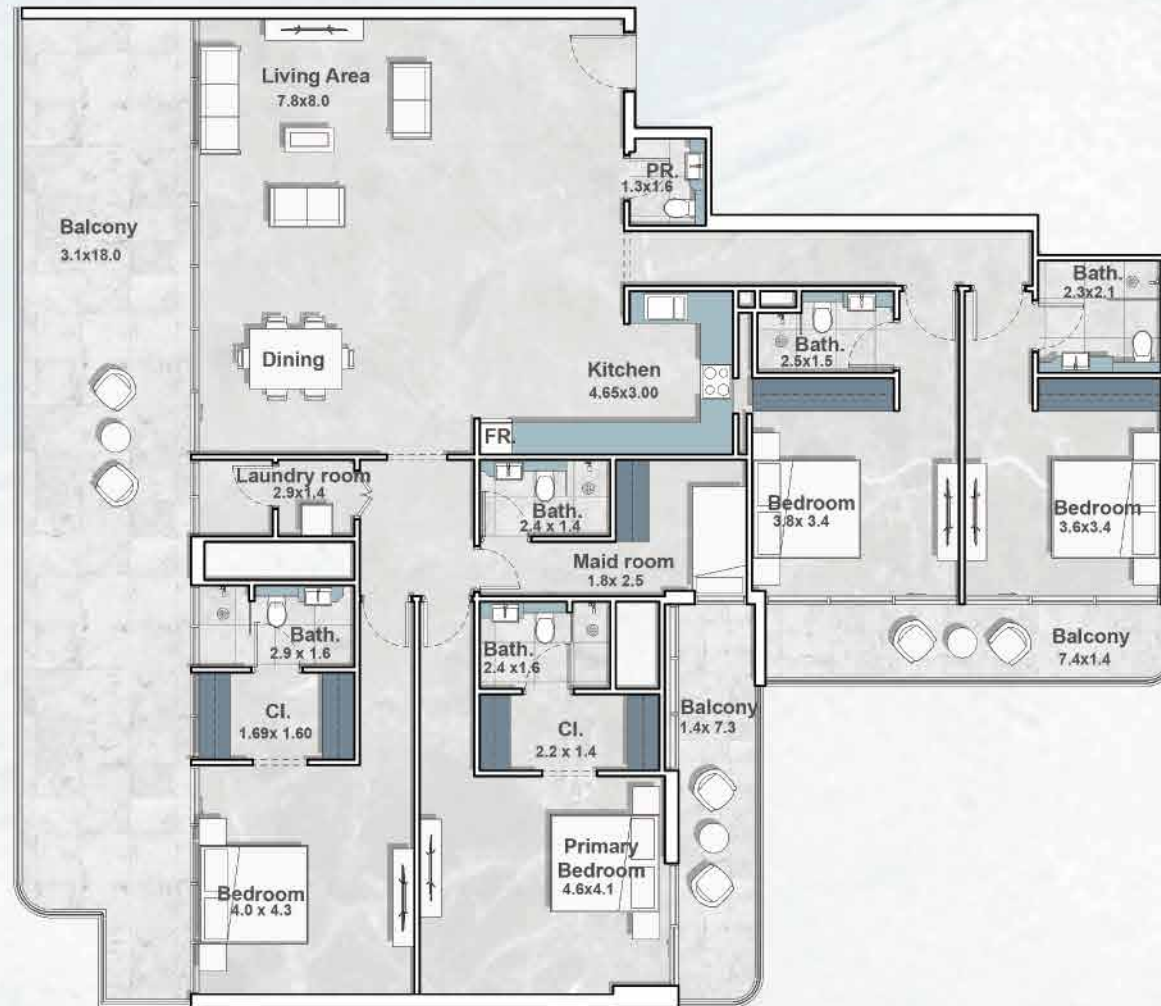
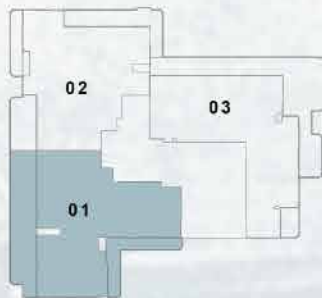
DUBAI CREEK

DISCLAIMER : All design, features, amenities, materials, dimensions, layout drawings are approximate and subject to change without prior notice. Actual area of the Unit may vary from the stated area; drawings not to scale. Developer reserves the right to make revisions to comply with any Applicable Law or the requirements of any Relevant Authority. For actual sizes please refer the Unit Reservation Agreement

UNIT 1401

PENTHOUSE - TYPE A
4 BEDROOM + MAID

14th Floor

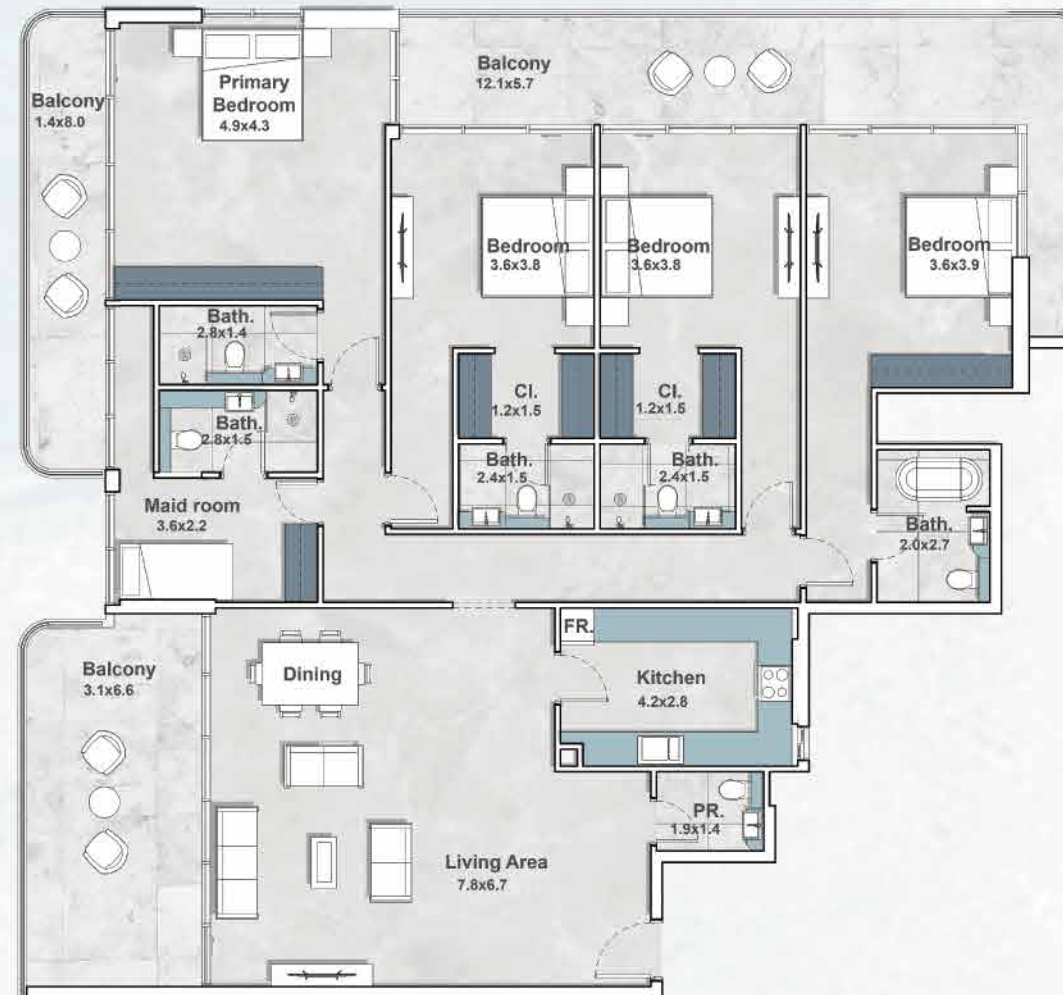


Internal Living Area	:	2311.66 Sq. Ft.
Outdoor Living Area	:	857.56 Sq. Ft.
Total Living Area	:	3169.22 Sq. Ft.

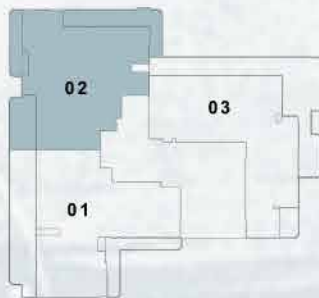
DISCLAIMER : All design, features, amenities, materials, dimensions, layout drawings are approximate and subject to change without prior notice. Actual area of the Unit may vary from the stated area; drawings not to scale. Developer reserves the right to make revisions to comply with any Applicable Law or the requirements of any Relevant Authority. For actual sizes please refer the Unit Reservation Agreement

UNIT 1402

PENTHOUSE - TYPE B
4 BEDROOM + MAID



14th Floor



Internal Living Area	:	2207.79	Sq. Ft.
Outdoor Living Area	:	677.80	Sq. Ft.
Total Living Area	:	2885.59	Sq. Ft.

DISCLAIMER : All design, features, amenities, materials, dimensions, layout drawings are approximate and subject to change without prior notice. Actual area of the Unit may vary from the stated area; drawings not to scale. Developer reserves the right to make revisions to comply with any Applicable Law or the requirements of any Relevant Authority. For actual sizes please refer the Unit Reservation Agreement

UNIT 1403

PENTHOUSE - TYPE C
4 BEDROOM + MAID

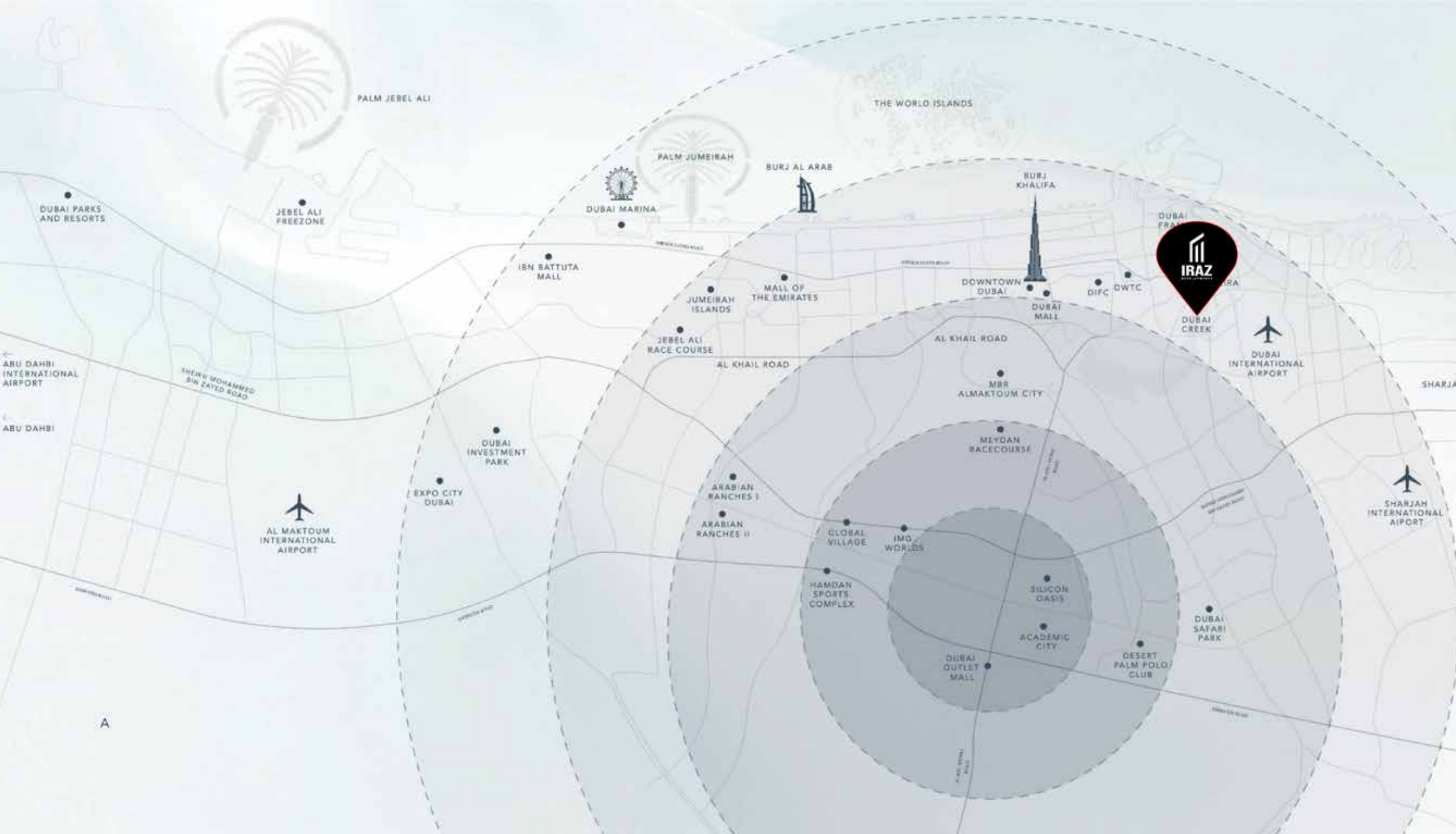


14th Floor



Internal Living Area	:	2247.50	Sq. Ft.
Outdoor Living Area	:	1041.73	Sq. Ft.
Total Living Area	:	3289.24	Sq. Ft.

DISCLAIMER : All design, features, amenities, materials, dimensions, layout drawings are approximate and subject to change without prior notice. Actual area of the Unit may vary from the stated area; drawings not to scale. Developer reserves the right to make revisions to comply with any Applicable Law or the requirements of any Relevant Authority. For actual sizes please refer the Unit Reservation Agreement



Adjacent To Dubai Creek



10 Minutes to Downtown Dubai



10 Minutes to Dubai Mall



10 Minutes to Dubai International Airport





✉ sales@irazdevelopments.com

☎ **800 IRAZ (4729)**

🌐 www.irazdevelopments.com

📍 Office No 106 , T&G Avenue , Indigo Central 8 street , Al Manara Sheikh Zayed Rd – Dubai