

**EXPERIENCE QUALITY,  
LIVE INNOVATION.**

**MIRHA**  
HOMES



# ABOUT MIRHA HOMES

Your gateway to luxurious & affordable living in the heart of Dubai

**MIRHA** HOMES is a dynamic real estate development company with diversified expertise in real estate, engineering, and construction. As an innovative business incubator, **MIRHA** HOMES harnesses all the possible processes and methodologies that can be utilized to efficiently & effectively carry out commitments to its customers.







**MIRHA HOMES** redefines the meaning of urban living by offering contemporary residential spaces with a touch of elegance, comfort, and convenience. Located in the heart of Warsan 4, our new development **27 EAST END GARDEN RESIDENCES** by offers premium apartments tailored to the needs of modern homeowners and investors.

With superior quality craftsmanship and superior architectural design, **MIRHA HOMES** brings to life living spaces that merge style and functionality effortlessly.

# NEARBY ATTRACTIONS

AMERICAN HOSPITAL

**20 minutes**

BLUE METRO LINE

**3 minutes**

DOWNTOWN AND DUBAI MALL

**20 minutes**

FAKEEH UNIVERSITY HOSPITAL

**4 minutes**

BUSINESS BAY

**21 minutes**

DRAGON MART

**15 minutes**

AL MAKTOUM AIRPORT

**30 minutes**

DUBAI INTERNATIONAL AIRPORT

**18 minutes**

MIRDIF CITY CENTER

**10 minutes**

DUBAI FESTIVAL CITY

**19 minutes**



BUSINESS BAY

DOWNTOWN  
DUBAI

DUBAI INTERNATIONAL  
AIRPORT

DUBAI FESTIVAL  
CITY

## **WARSAN 4 STRATEGICALLY LOCATED**

Next To Nad Al Sheba  
Dubai Silicon Oasis  
Dubai Academic City  
And Close Proximity To DLRC

**MIRHA HOMES  
WARSAN 4**

DRAGON MART

# 27 EAST END GARDEN RESIDENCES

**27 EAST END GARDEN RESIDENCES** by **MIRHA HOMES** is a sophisticated residential building that blends modern design in harmony with practicality. Featuring elegant finishes and abundant natural light streaming through its expansive windows, the building offers a refined atmosphere. Thereby presenting a refreshingly idealistic business environment. It features premium amenities for its residents and tenants. Its prime location of Warsan 4 allows for easy access to shopping, dining, and everything else at your doorstep. The developer has skillfully utilized the space to highlight the building's true character, creating an inviting and inspiring environment.







# WHY INVEST IN MIRHA HOMES?

Strategic Location: Warsan 4, Dubai  
Flexible Payment Terms  
High ROI Potential  
Modern Design & Quality Construction

# APARTMENT FEATURES

We pride ourselves on using only the finest materials in our finishes, elegant materials and branded world-class fixtures and fittings, coupled with an in-depth attention to details.

**Smart Locks** - Our smart door locks allow you to lock and unlock your door remotely, providing convenient keyless entry to your home and enhanced security.





**Walk In Closets** - Ample storage space for clothing, shoes and accessories to help you keep your space clutter-free.







**American Kitchen** - A big, cozy and open space renowned for its perfect blend of aesthetics and practicality.

**Siemens & Ariston Appliances** - Our kitchen is fully equipped with state-of-the-art built-in appliances, seamlessly combining cutting-edge innovation with refined luxury.



**Modern Glass Wardrobes** - Our elegant glass wardrobes stand out with its sleek finish and sophisticated glass doors, making it a perfect fit for any contemporary home.

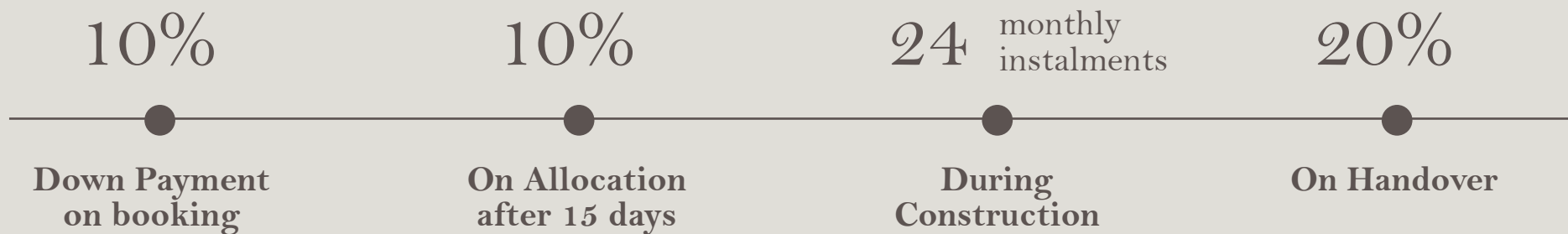




**Landscape Gardens** - Aesthetic lush green gardens with a picturesque landscape, improving the living environment of our residents.

**24/7 Security** - Our round the clock security services offer constant monitoring and surveillance, safeguarding your wellbeing and protecting your property.

# PAYMENT PLAN



# OUR RESIDENCE

Mirha Homes introduces 96 thoughtfully designed units articulately balancing space, luxury, and functionality:



STARTING 515,000 AED

## Studio Apartments:

These units boast smart layouts that maximize space and comfort.



402 sq.ft





STARTING 863,000 AED

## One-Bedroom Apartments:

Ideal for singles or couples, they offer modern interiors with open-plan living and dining areas.





751 sq.ft







1588 sq.ft





MIRHA  
HOMES

STARTING 1.5 MILLION AED



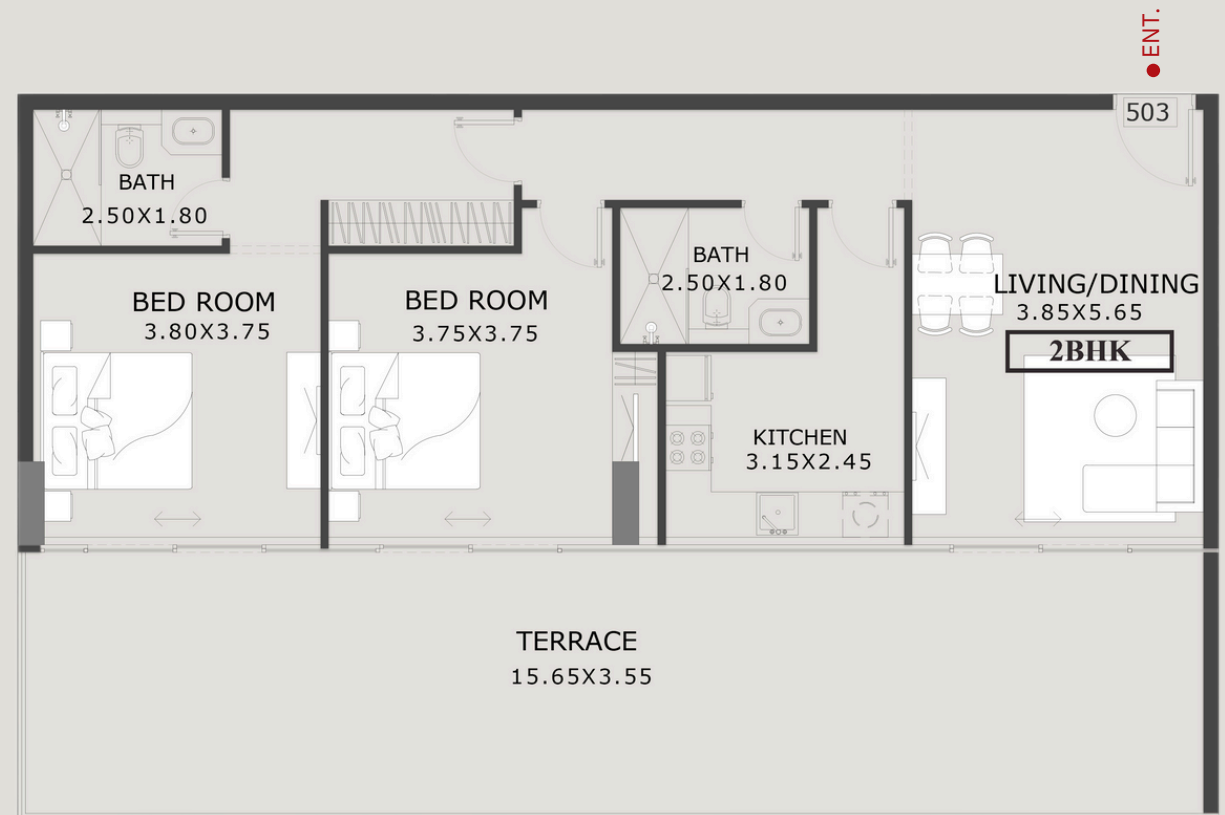
## Two-Bedroom Apartments:

Designed for families or those in need of extra space, these apartments boast premium finishes and well-appointed rooms.

# UNIT LAYOUTS

## 2 BEDROOM APARTMENT

SUITE AREA	985 SQ.F
BALCONY AREA	603 SQ.F
TOTAL UNIT AREA	1588 SQ.F

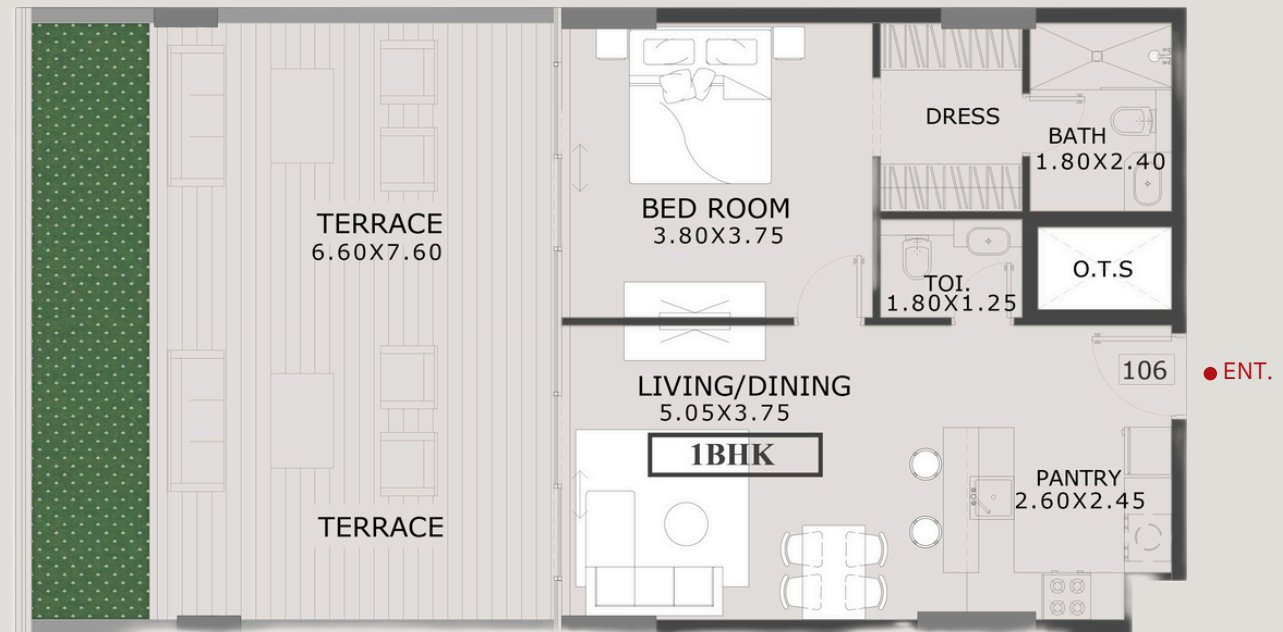




# UNIT LAYOUTS

## 1 BEDROOM APARTMENT

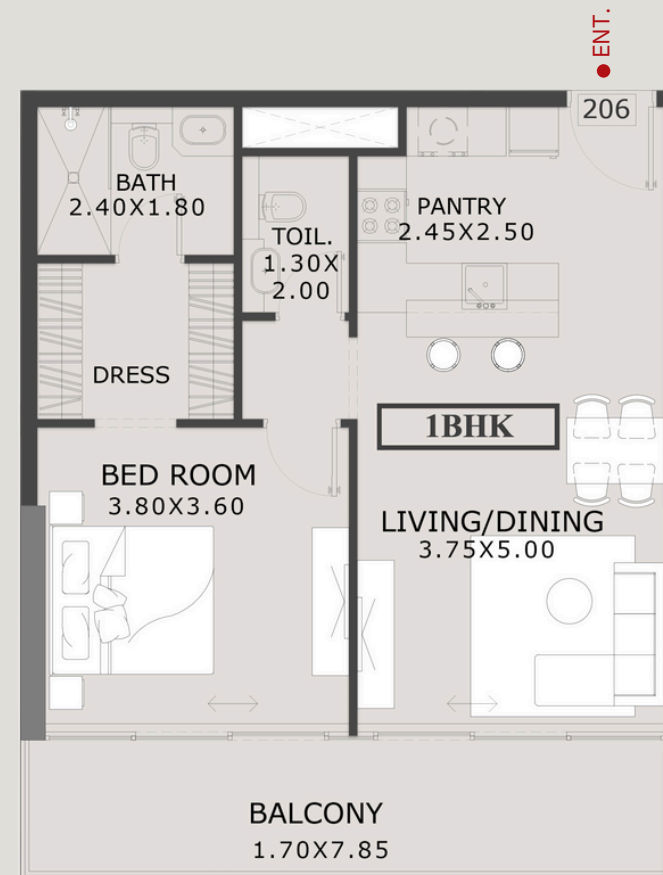
SUITE AREA	629 SQ.F
BALCONY AREA	575 SQ.F
TOTAL UNIT AREA	1204 SQ.F



# UNIT LAYOUTS

## 1 BEDROOM APARTMENT

SUITE AREA	636 SQ.F
BALCONY AREA	146 SQ.F
TOTAL UNIT AREA	782 SQ.F

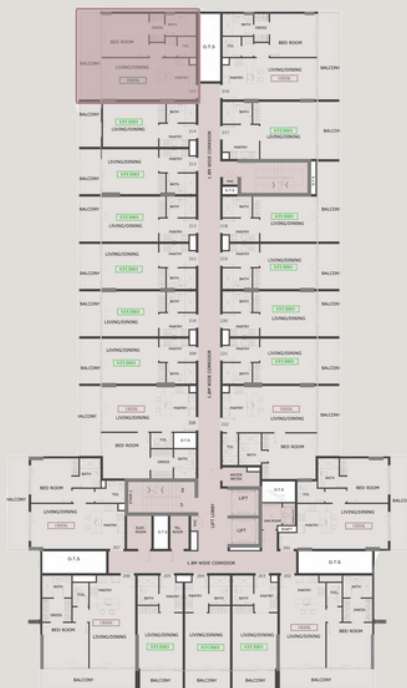




# UNIT LAYOUTS

## 1 BEDROOM APARTMENT

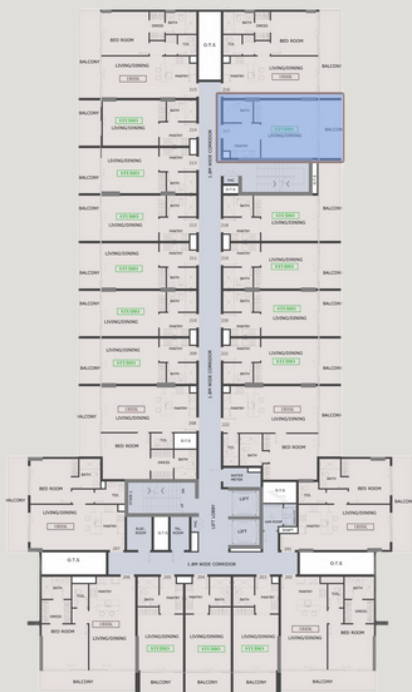
SUITE AREA	608 SQ.F
BALCONY AREA	143 SQ.F
TOTAL UNIT AREA	751 SQ.F



# UNIT LAYOUTS

## STUDIO APARTMENT

SUITE AREA	413 SQ.F
BALCONY AREA	97 SQ.F
TOTAL UNIT AREA	510 SQ.F





# UNIT LAYOUTS

## STUDIO APARTMENT

SUITE AREA	325 SQ.F
BALCONY AREA	77 SQ.F
TOTAL UNIT AREA	402 SQ.F









# EXCLUSIVE AMENITIES

At **MIRHA HOMES** we don't only provide you with a home, but a lifestyle with the best facilities

---

**Swimming Pool** - Savor the serenity of our swimming pool area exquisitely designed for you to indulge and relax



**Fitness Center** - Stay fit with our fully equipped indoor gym with top of the line equipment designed to elevate your workout.

**Sauna** - Unwind and recharge in our sauna room, designed to promote a sense of calm and tranquility.

**Concierge Services** - Offering a wide-ranging services to enable and enhance every aspect of our residents lives.

**Waste Management & Recycling** - To ensure convenience, sustainability, and a positive living experience for all residents we have implemented a dedicated area to maintain a clean and eco-friendly environment.





**Sky Garden Terrace** - Perched at the top, enjoy landscaped gardens, observation decks and open-air terrace while indulging in incredible views of the city.



**Foosball and Tennis Table-** A fun playing zone for all sports enthusiasts to engage in friendly matches.

**Barbecue Area-** Fire up the grill and enjoy sizzling meals with family and friends.

**Jogging Track-** A nicely laid track for jogging and walking to stay active and healthy while taking in the stunning views.

**Prayer Room-**A tranquil space for spiritual reflection and prayer.

**Children's Play Area-**A safe and fun environment for kids to stay occupied and entertained.









A modern interior space featuring a large window with a grid pattern. In the foreground, there are three marble pedestals of varying heights, each topped with a golden bust. A curved, light-colored sofa is positioned in front of the window. A low, dark coffee table holds a vase of flowers and a glass. The floor is made of light-colored wood. The text "Invest in your dream home today with MIRHA HOMES !" is overlaid on the image.

Invest in your dream home  
today with **MIRHA** HOMES !







📍 Office No. 1402, Fifty One Tower, Marasi Drive Business Bay, Dubai, UAE 📞 +971 55 906 8600

☎ 04 572 8314 📧 [info@mirhahomesdevelopments.com](mailto:info@mirhahomesdevelopments.com) 🌐 [www.mirhahomesdevelopments.com](http://www.mirhahomesdevelopments.com)