



SERENIA LIVING
THE PALM

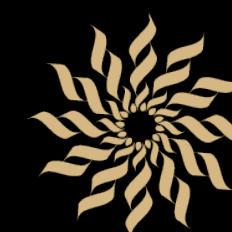
One / ONE

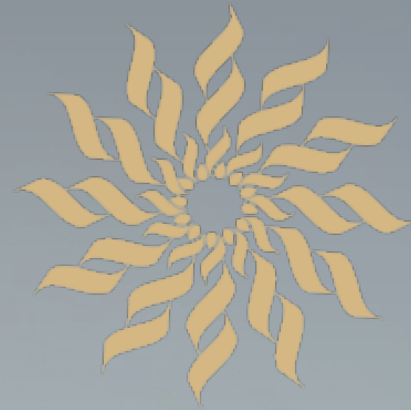
THE MOST EXCLUSIVE
PRESIDENTIAL PENTHOUSE IN DUBAI



PALMATM
DEVELOPMENT

One/ONE





SERENIA LIVING
THE PALM



FULL FLOOR PRESIDENTIAL PENTHOUSE

12,707 SQFT



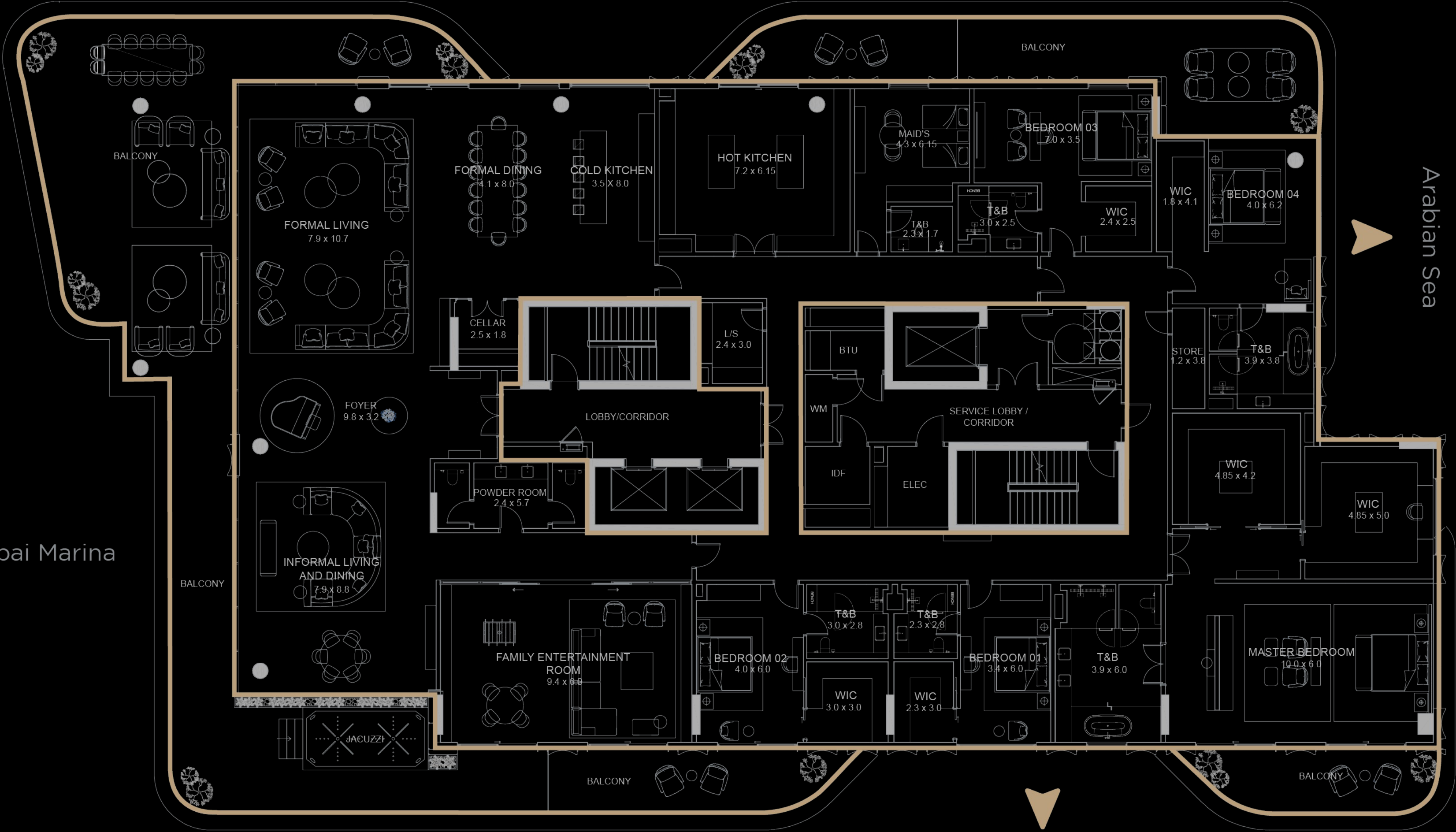
Ain Dubai/
Bluewaters

Palm Jumeirah/Dubai Marina

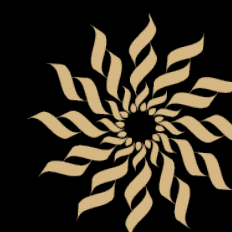
Burj Al Arab

Atlantis

Arabian Sea



EXCLUSIVITY & PRIVACY





WELCOMING AMBIENT MUSIC

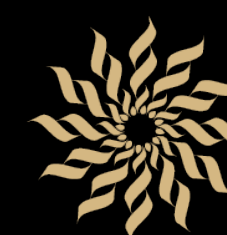
DEDICATED FLOOR ACCESS

PRIVATE LIFT LOBBY

DEDICATED CCTV SYSTEM



INTERIORS



PANORAMIC LIVING SPACES



PRIVATE OUTDOOR JACUZZI





CUSTOMIZED ITALIAN KITCHEN

Dada

GAGGENAU

bulthaup
the kitchen as a living space

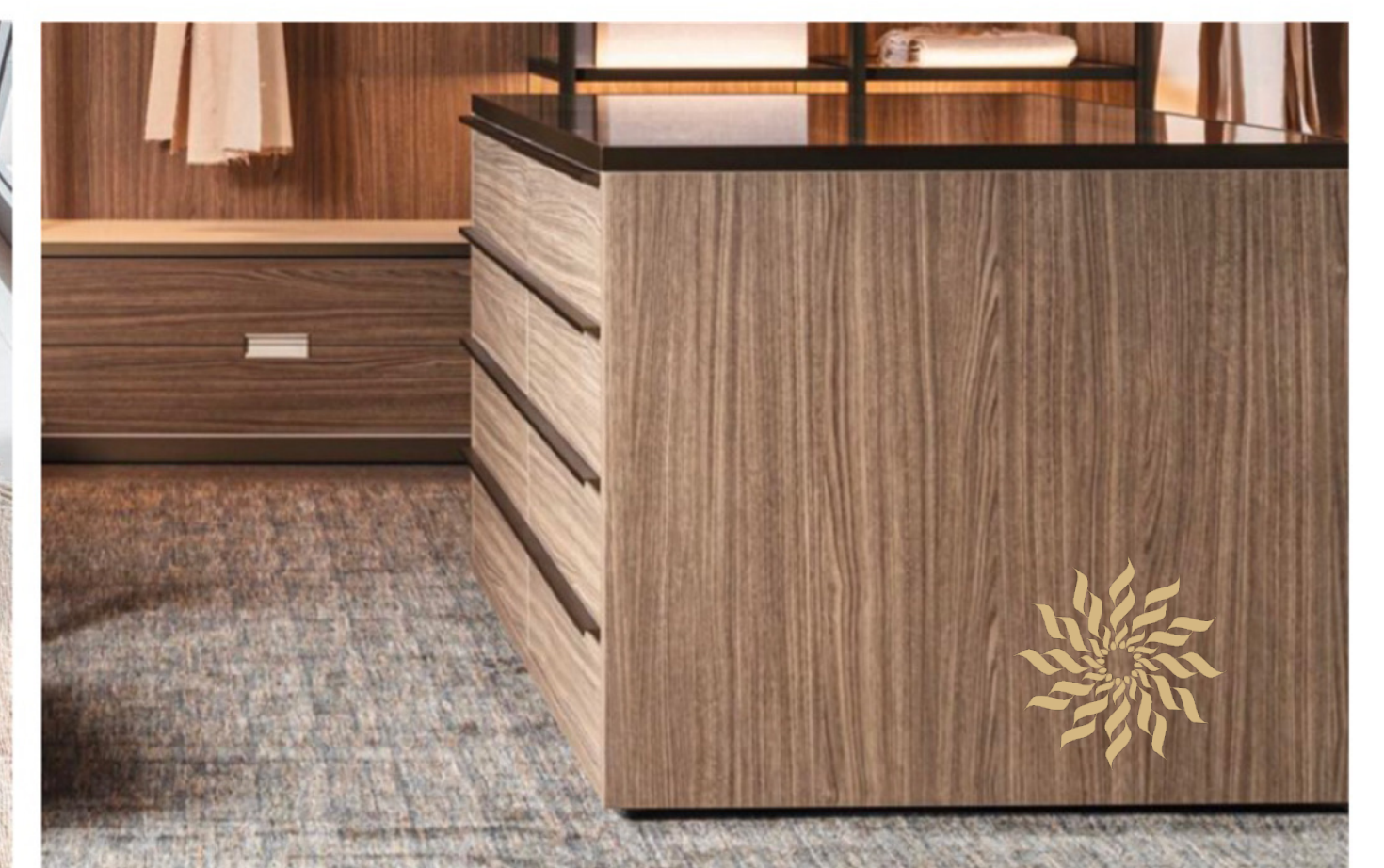




CUSTOM-MADE CLOSET

Molteni & C

Rimadesio





DESIGNATED VIP PARKING AREA

8

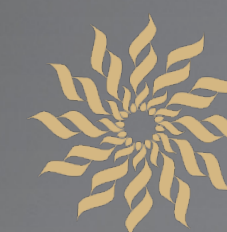
private parking lots offering ample space for utmost convenience,
peace of mind and direct access to elevators



THE RESERVE OWNER'S CLUB



The Reserve Owner's Club, your exclusive access to
super-premium services



BESPOKE SERVICE SELECTIONS

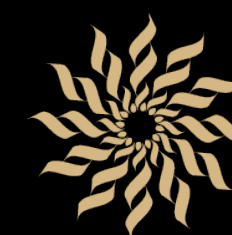


PRIVATE CHAUFFEUR SERVICE



One/ONE

AN ECLECTIC SPACE
FOR TRUE INDIVIDUALITY





For more information, contact the developer

800-PALMA (72562) | WhatsApp: +971561150677

info@palmaholding.com