

CĒLESTE HEIGHTS

BY ZIMAYA

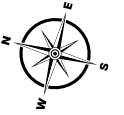
TYPICAL FLOOR PLANS



01

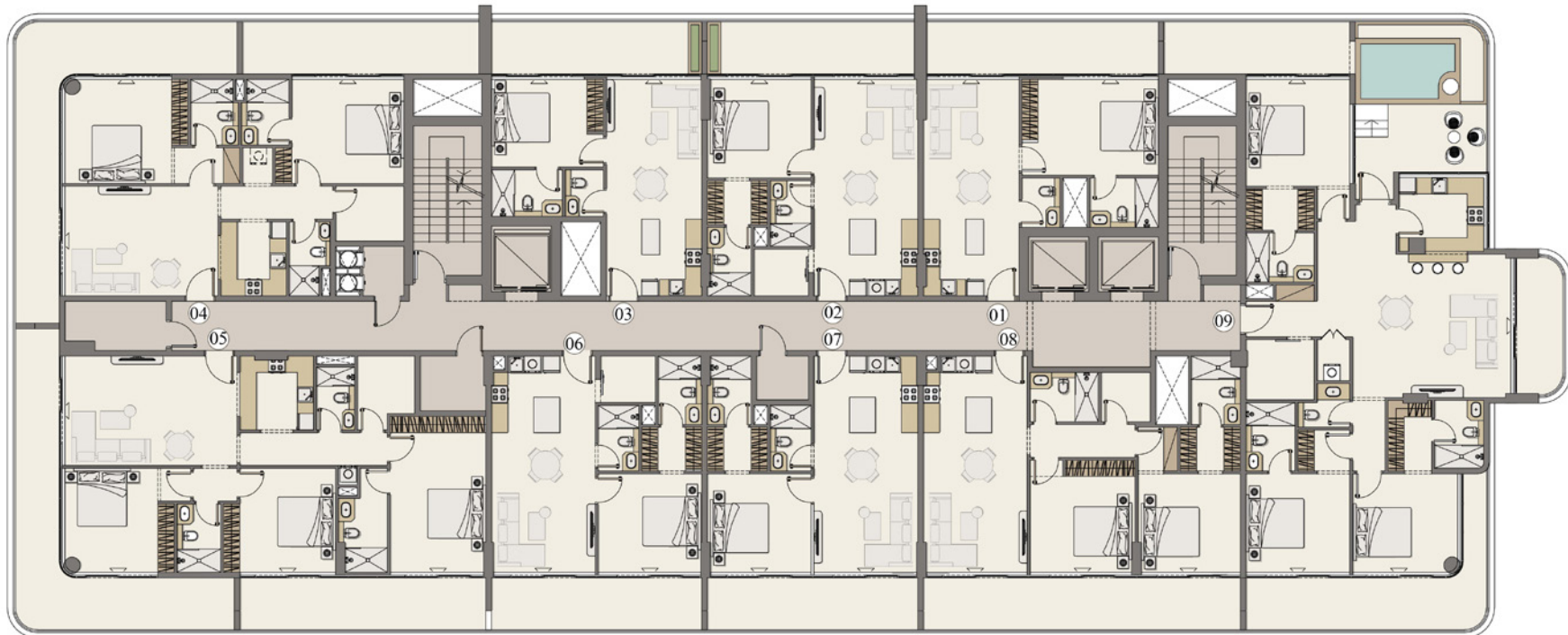
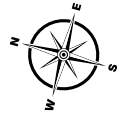
TYPICAL FLOOR LAYOUT





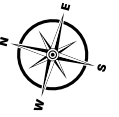
FIRST FLOOR
TYPICAL FLOOR LAYOUT

CĒLESTE HEIGHTS
BY ZIMAYA



FLOOR: 02, 04, 06, 08
TYPICAL FLOOR LAYOUT

CĒLESTE HEIGHTS
BY ZIMAYA



FLOOR: 03, 05, 07
TYPICAL FLOOR LAYOUT

CÉLESTE HEIGHTS
BY ZIMAYA

05

TYPICAL UNIT PLANS

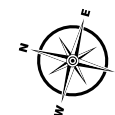
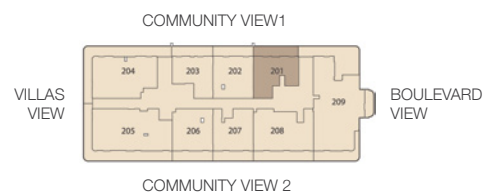
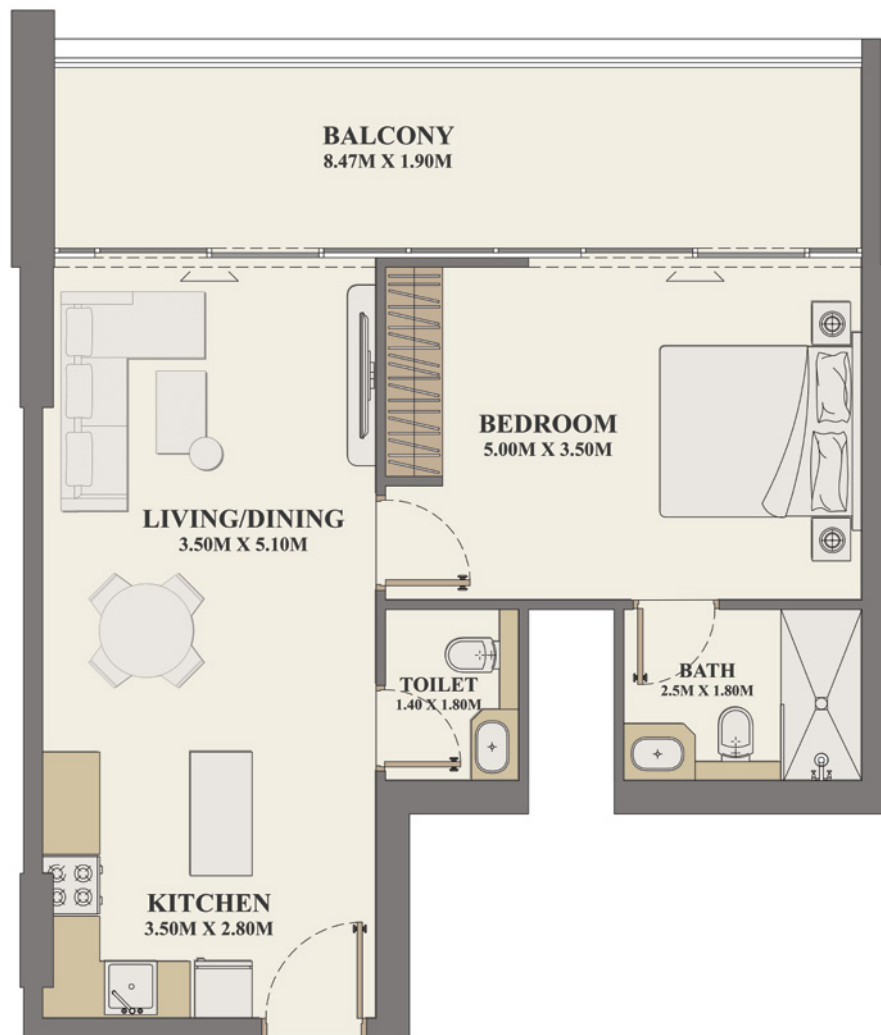


CÉLESTE HEIGHTS

BY ZIMAYA

1 BEDROOM

Units	201, 401, 601, 801
Internal Living Area	621.40 sq. ft.
Outdoor Living Area	188.26 sq. ft.
Total Living Area	809.66 sq. ft.



CÉLESTE HEIGHTS

BY ZIMAYA

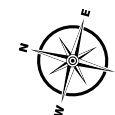
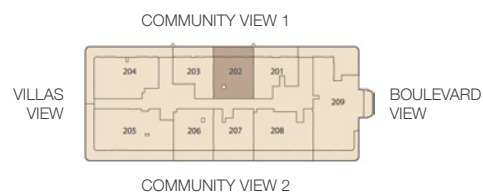
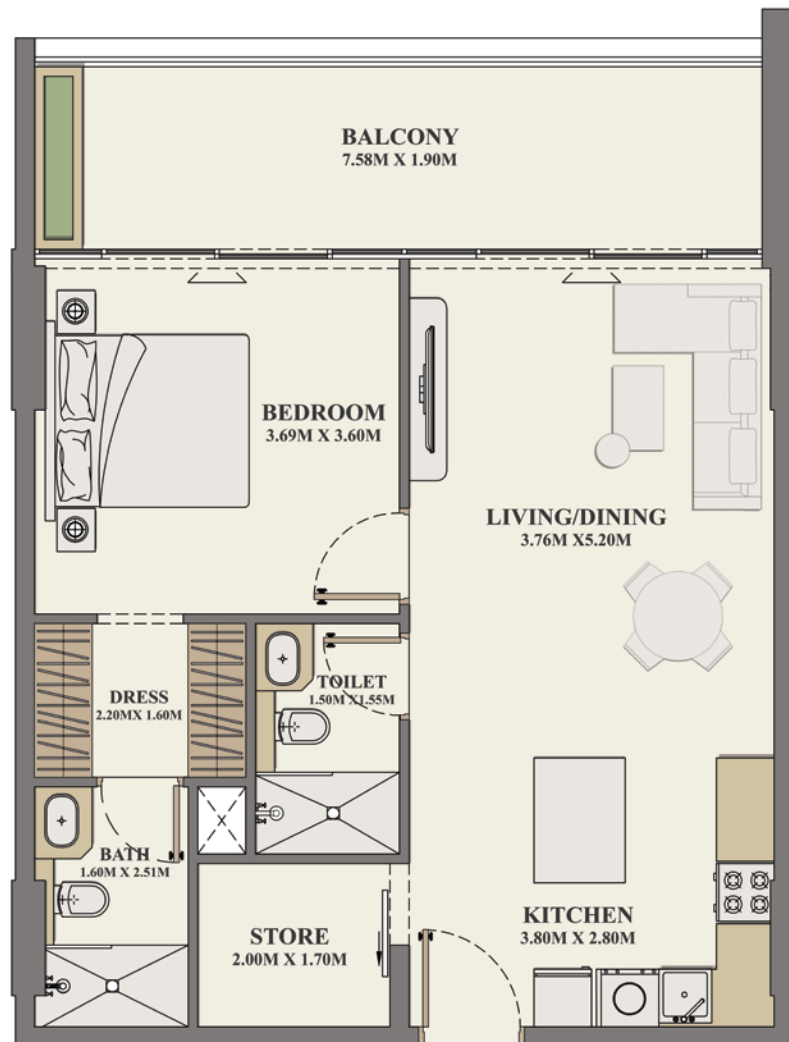
1 BEDROOM + STORE

Units 202, 402, 602, 802

Internal Living Area 688.78 sq. ft.

Outdoor Living Area 167.06 sq. ft.

Total Living Area 855.84 sq. ft.



CÉLESTE HEIGHTS

BY ZIMAYA

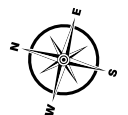
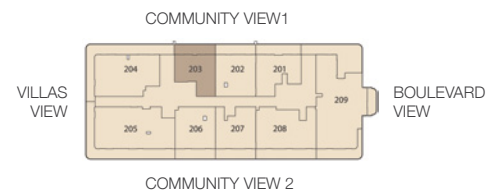
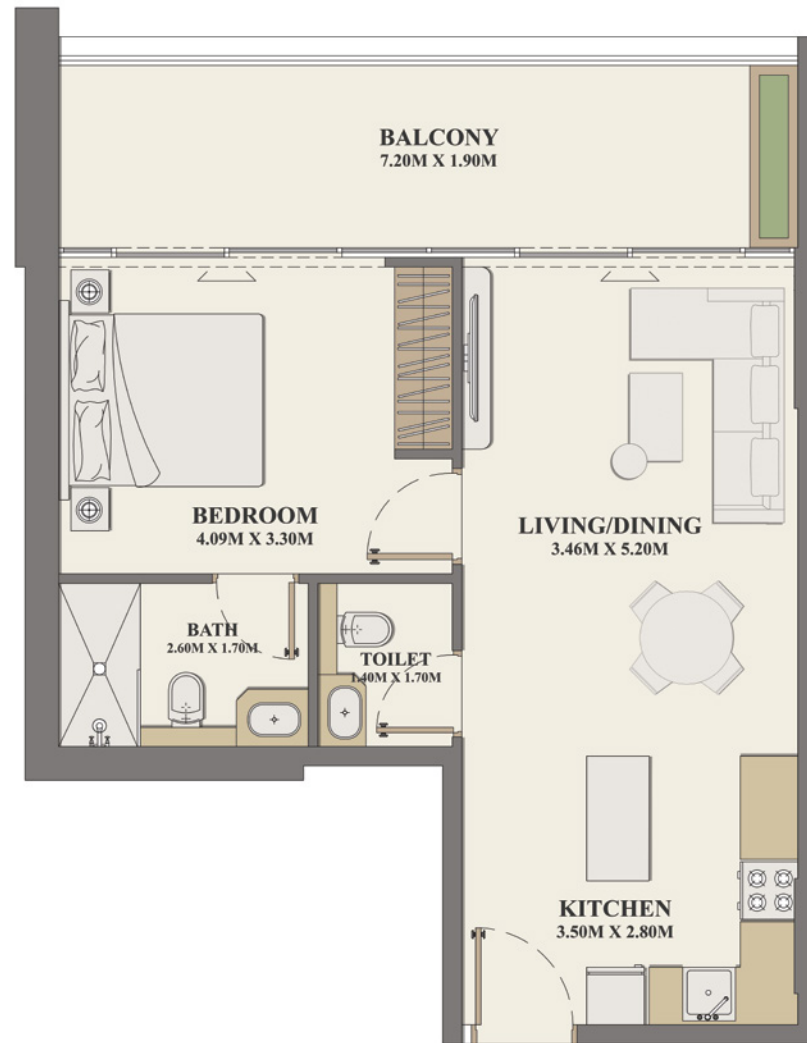
1 BEDROOM

Units 203, 403, 603, 803

Internal Living Area 568.98 sq. ft.

Outdoor Living Area 170.93 sq. ft.

Total Living Area 739.91 sq. ft.

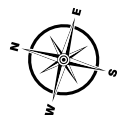
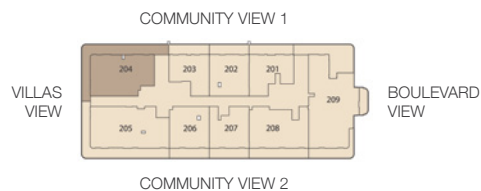
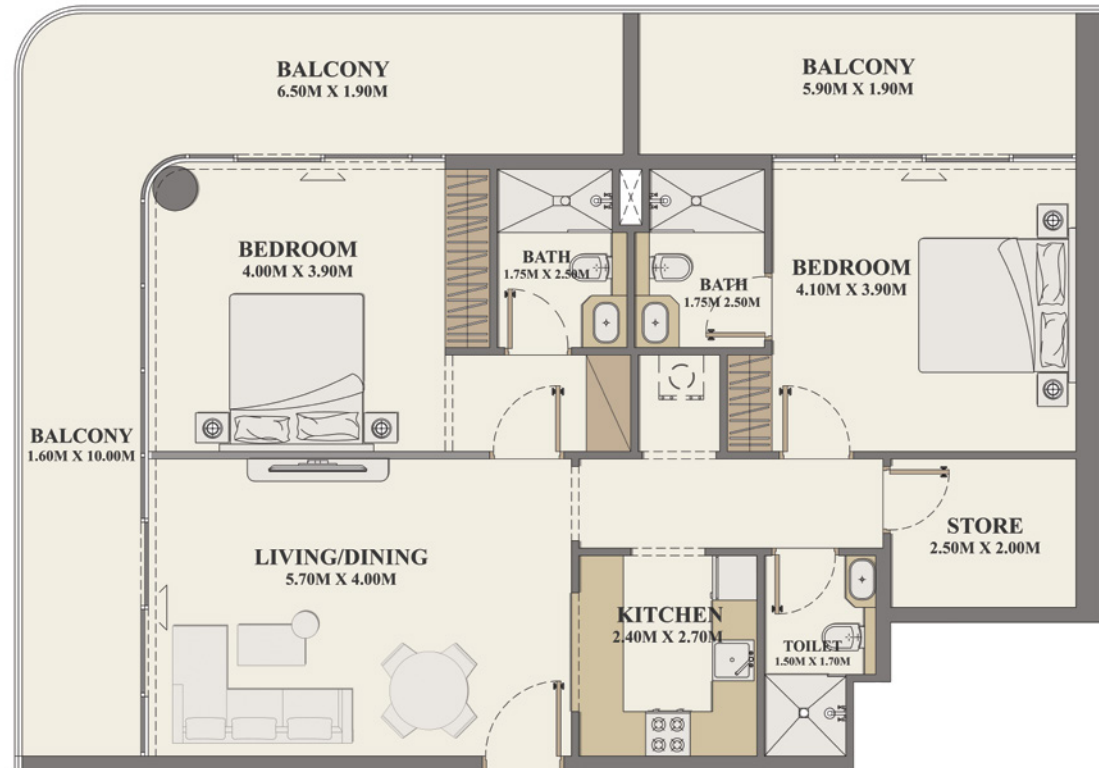


CĒLESTE HEIGHTS

BY ZIMAYA

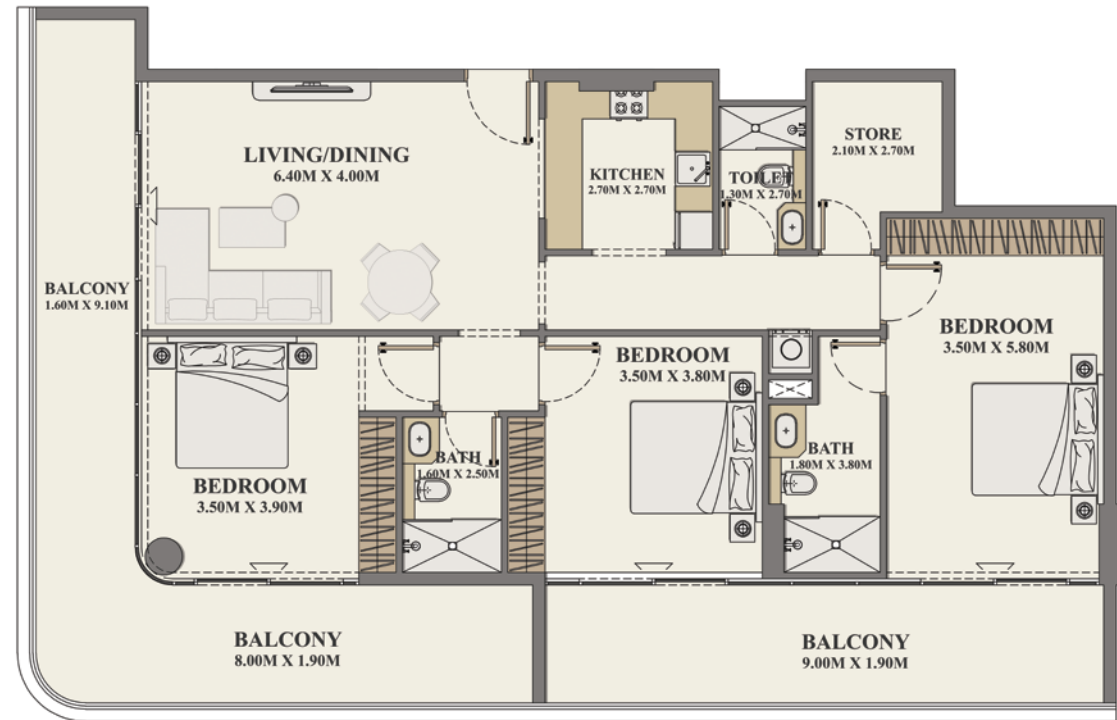
2 BEDROOM + STORE

Units	204, 404, 604, 804
Internal Living Area	1046.36 sq. ft.
Outdoor Living Area	531.95 sq. ft.
Total Living Area	1578.31 sq. ft.



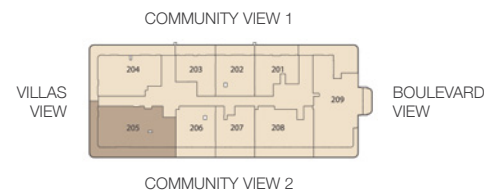
CÉLESTE HEIGHTS

BY ZIMAYA



3 BEDROOM + STORE

Units	205, 405, 605, 805
Internal Living Area	1300.28 sq. ft.
Outdoor Living Area	531.63 sq. ft.
Total Living Area	1831.91 sq. ft.



CÉLESTE HEIGHTS

BY ZIMAYA

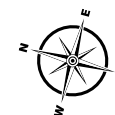
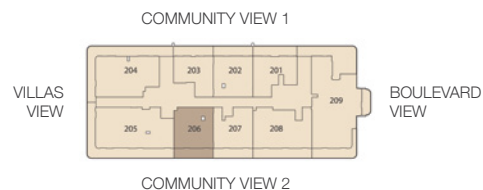
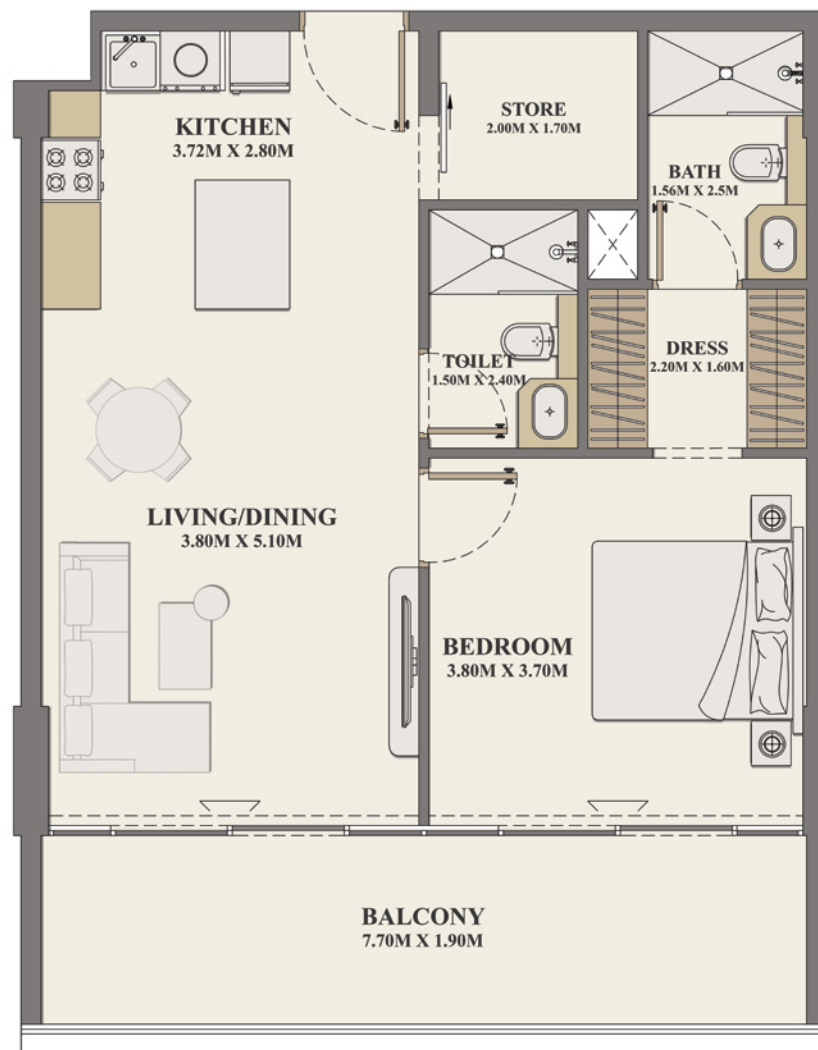
1 BEDROOM + STORE

Units 206, 406, 606, 806

Internal Living Area 685.23 sq. ft.

Outdoor Living Area 167.06 sq. ft.

Total Living Area 852.29 sq. ft.



CÉLESTE HEIGHTS

BY ZIMAYA

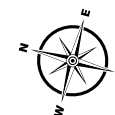
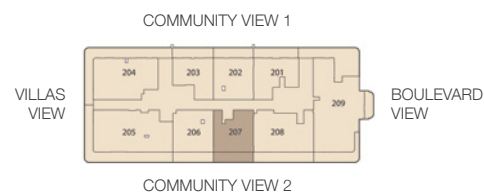
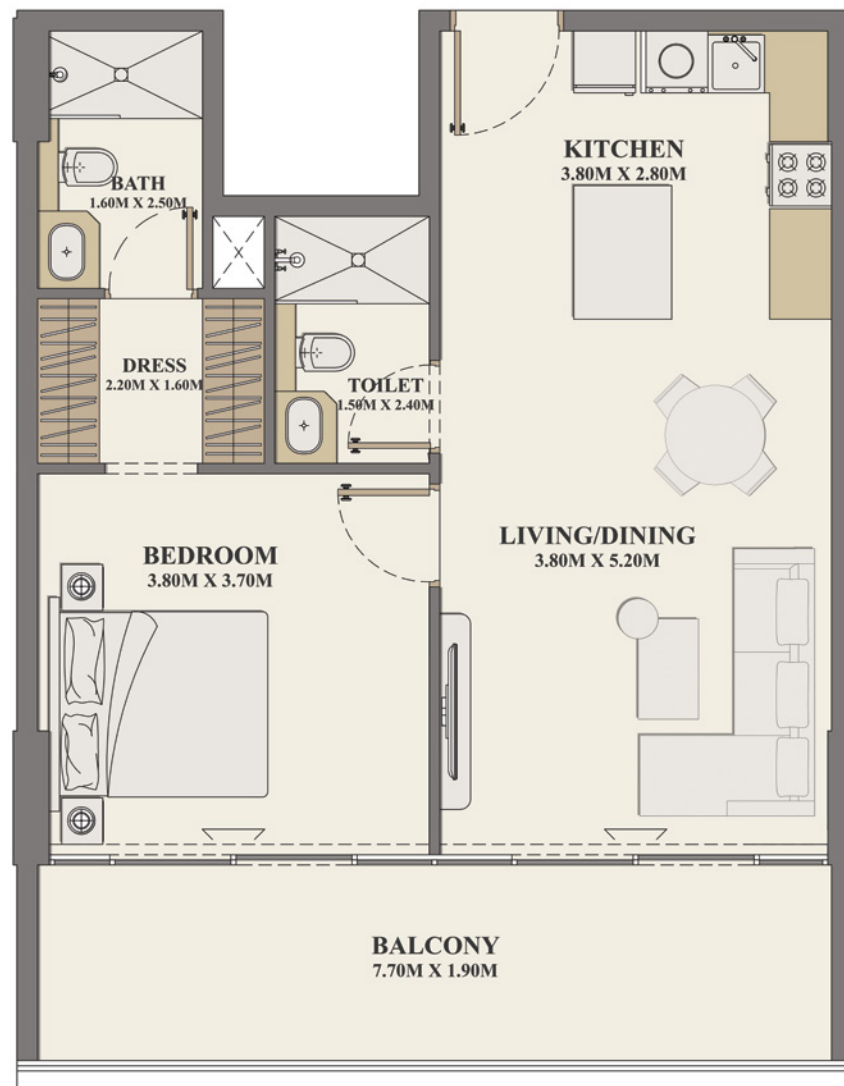
1 BEDROOM

Units 207, 407, 607, 807

Internal Living Area 647.77 sq. ft.

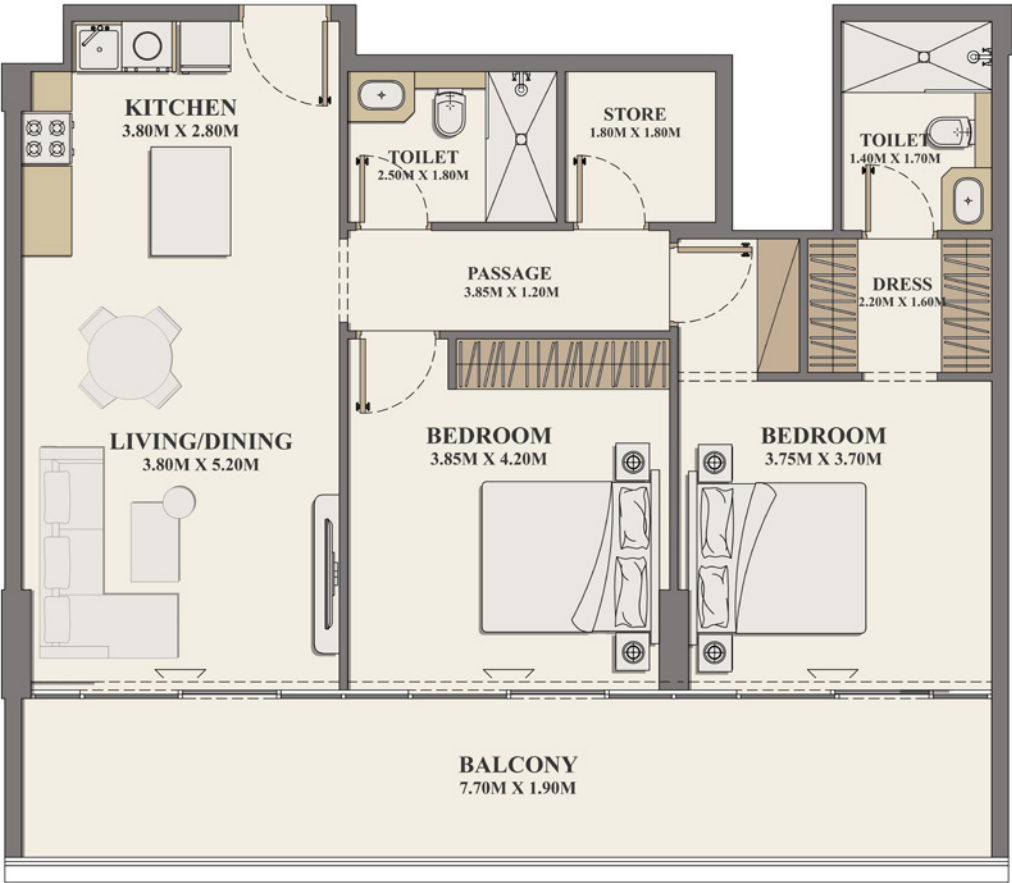
Outdoor Living Area 167.06 sq. ft.

Total Living Area 814.83 sq. ft.



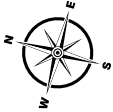
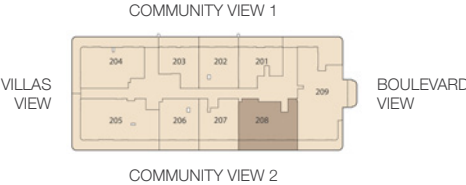
CÉLESTE HEIGHTS

BY ZIMAYA



2 BEDROOM + STORE

Units	208, 408, 608, 808
Internal Living Area	962.83 sq. ft.
Outdoor Living Area	249.51 sq. ft.
Total Living Area	1212.34 sq. ft.



CÉLESTE HEIGHTS

BY ZIMAYA

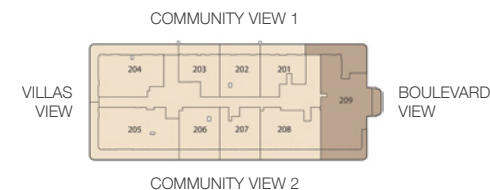
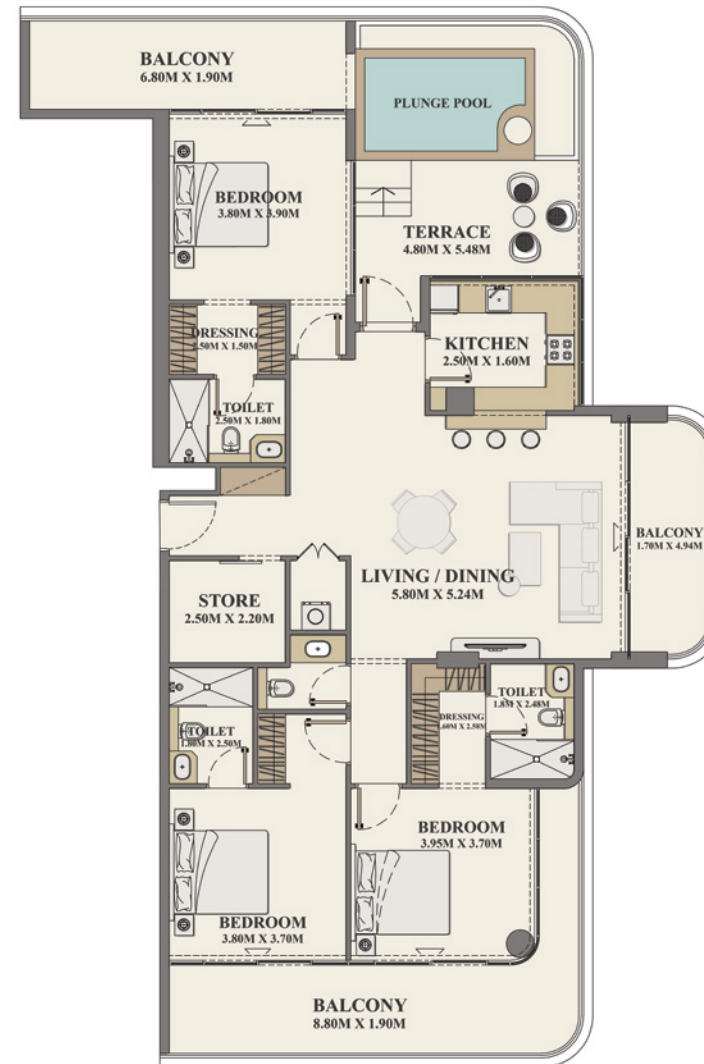
3 BEDROOM + STORE + POOL

Units 209, 409, 609, 809

Internal Living Area 1576.81 sq. ft.

Outdoor Living Area 778.88 sq. ft.

Total Living Area 2355.68 sq. ft.

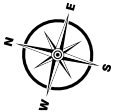
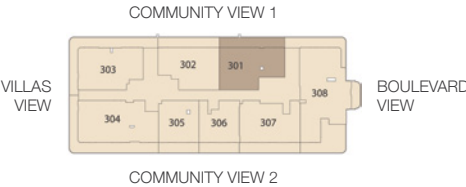
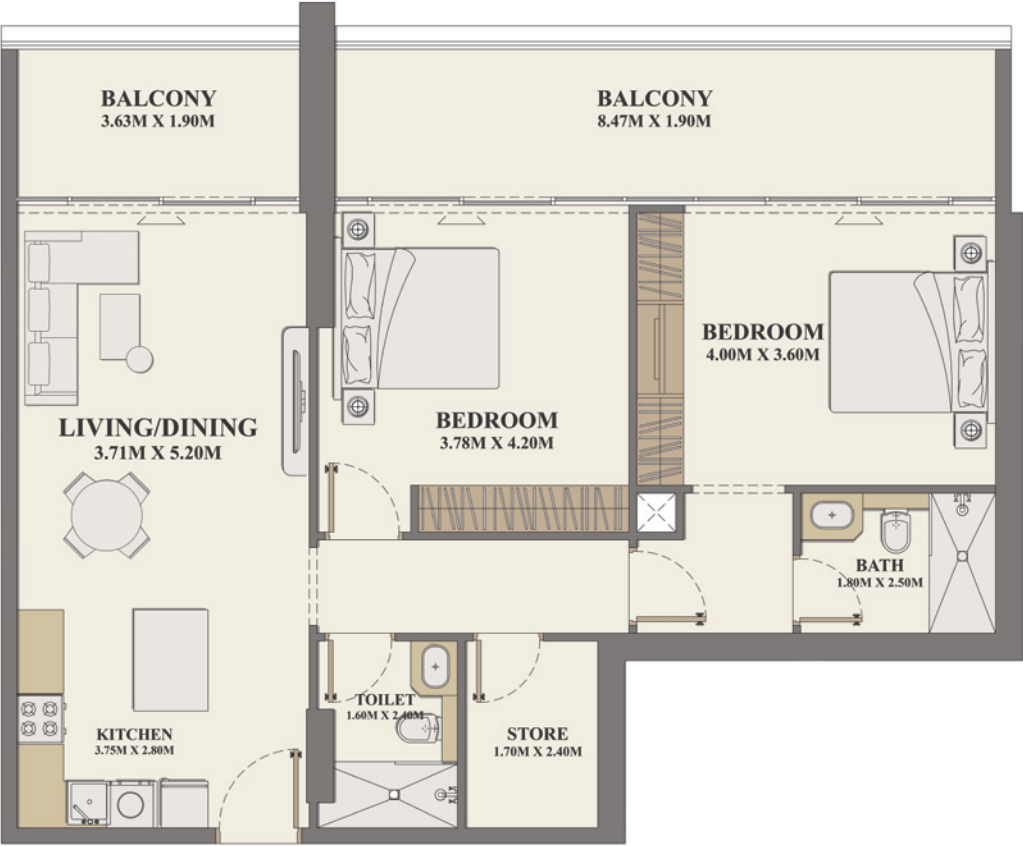


CÉLESTE HEIGHTS

BY ZIMAYA

2 BEDROOM + STORE

Units	301, 501, 701
Internal Living Area	988.56 sq. ft.
Outdoor Living Are	270.50 sq. ft.
Total Living Area	1259.05 sq. ft.

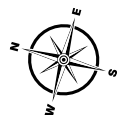
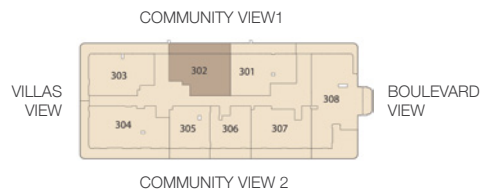
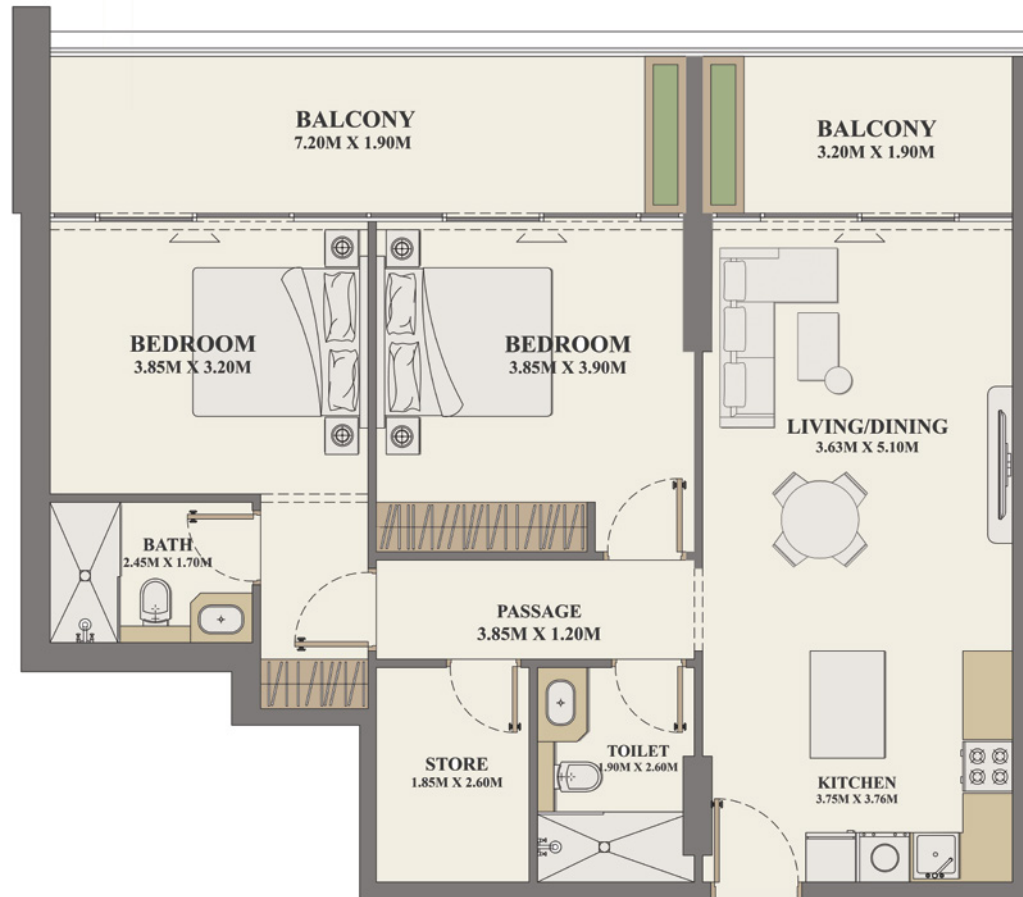


CÉLESTE HEIGHTS

BY ZIMAYA

2 BEDROOM + STORE

Units	302, 502, 702
Internal Living Area	936.46 sq. ft.
Outdoor Living Area	253.38 sq. ft.
Total Living Area	1189.84 sq. ft.

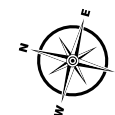
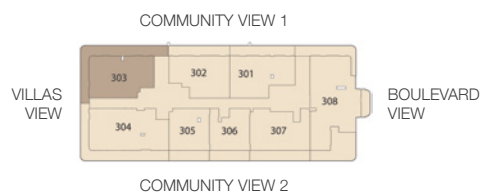
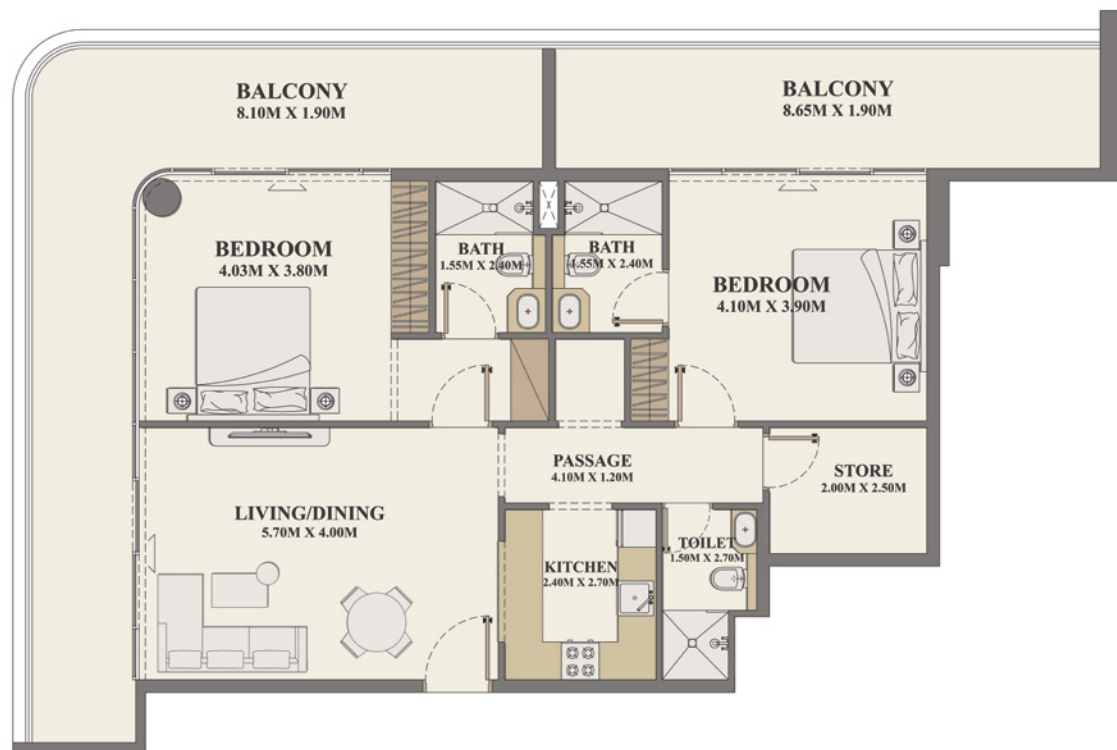


CĒLESTE HEIGHTS

BY ZIMAYA

2 BEDROOM + STORE

Units	303, 503, 703
Internal Living Area	1045.71 sq. ft.
Outdoor Living Area	531.84 sq. ft.
Total Living Area	1577.56 sq. ft.

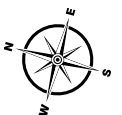
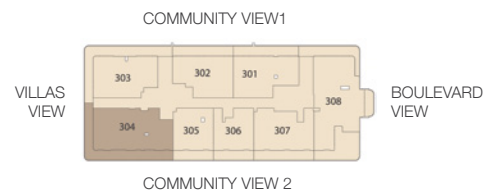
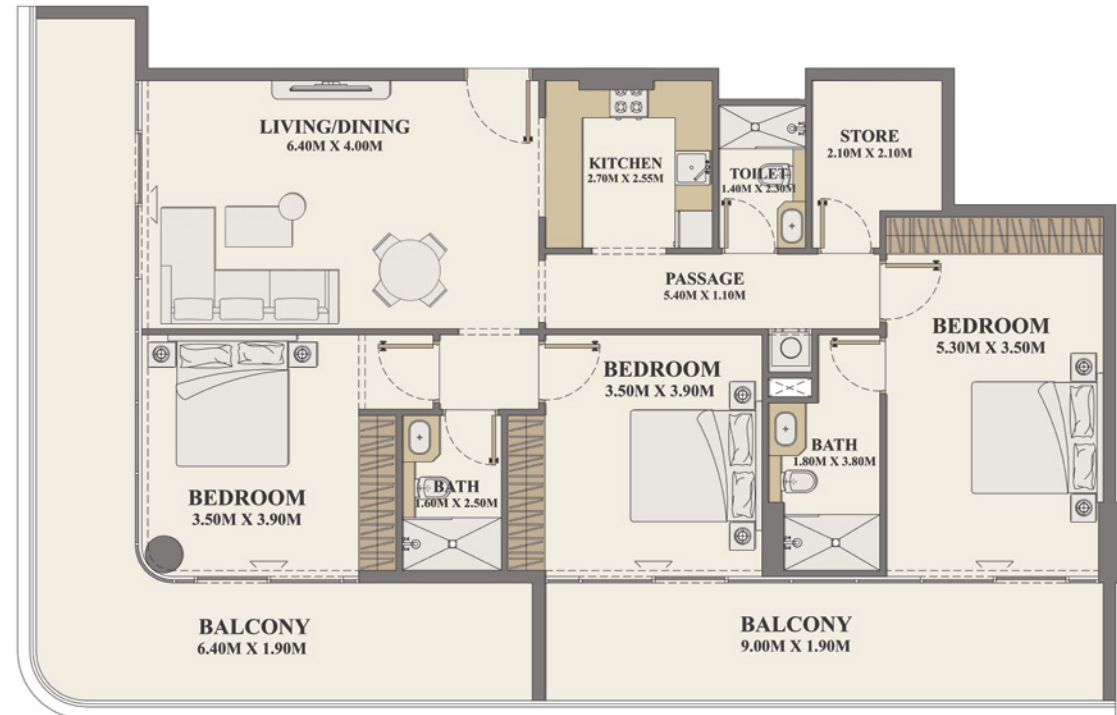


CÉLESTE HEIGHTS

BY ZIMAYA

3 BEDROOM + STORE

Units	304, 504, 704
Internal Living Area	1297.59 sq. ft.
Outdoor Living Area	534.32 sq. ft.
Total Living Area	1831.91 sq. ft.



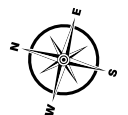
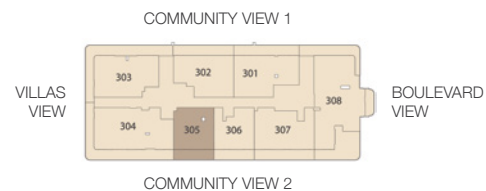
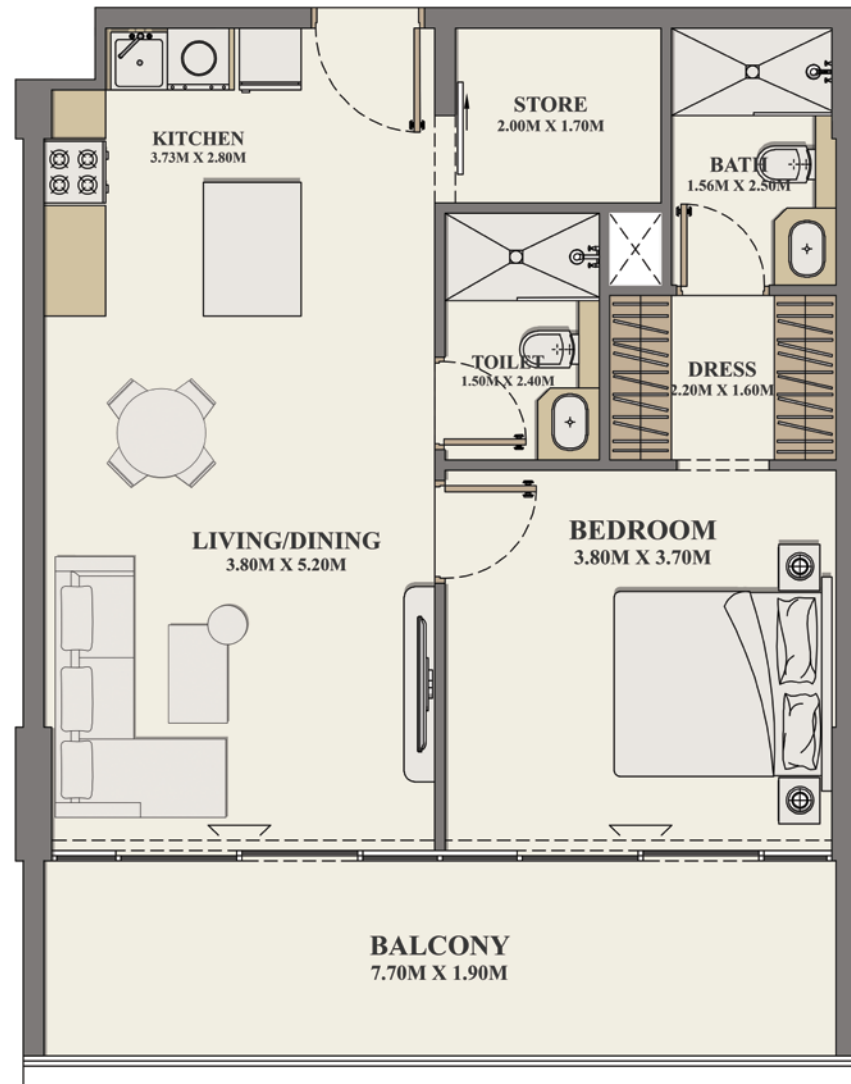
19

CÉLESTE HEIGHTS

BY ZIMAYA

1 BEDROOM + STORE

Units	305, 505, 705
Internal Living Area	685.23 sq. ft.
Outdoor Living Area	167.06 sq. ft.
Total Living Area	852.29 sq. ft.

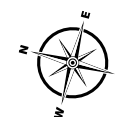
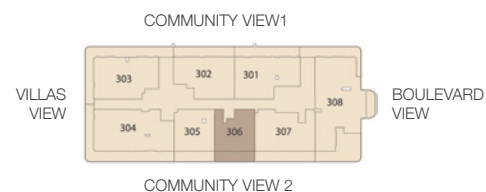
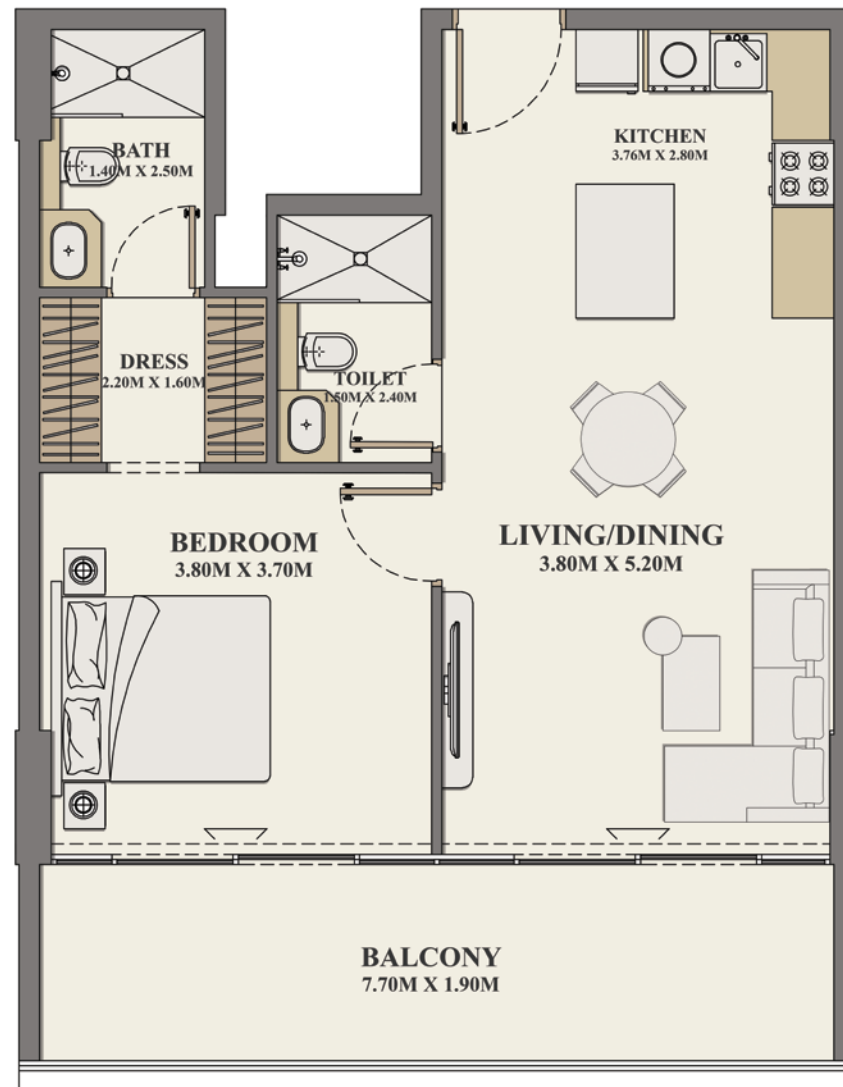


CÉLESTE HEIGHTS

BY ZIMAYA

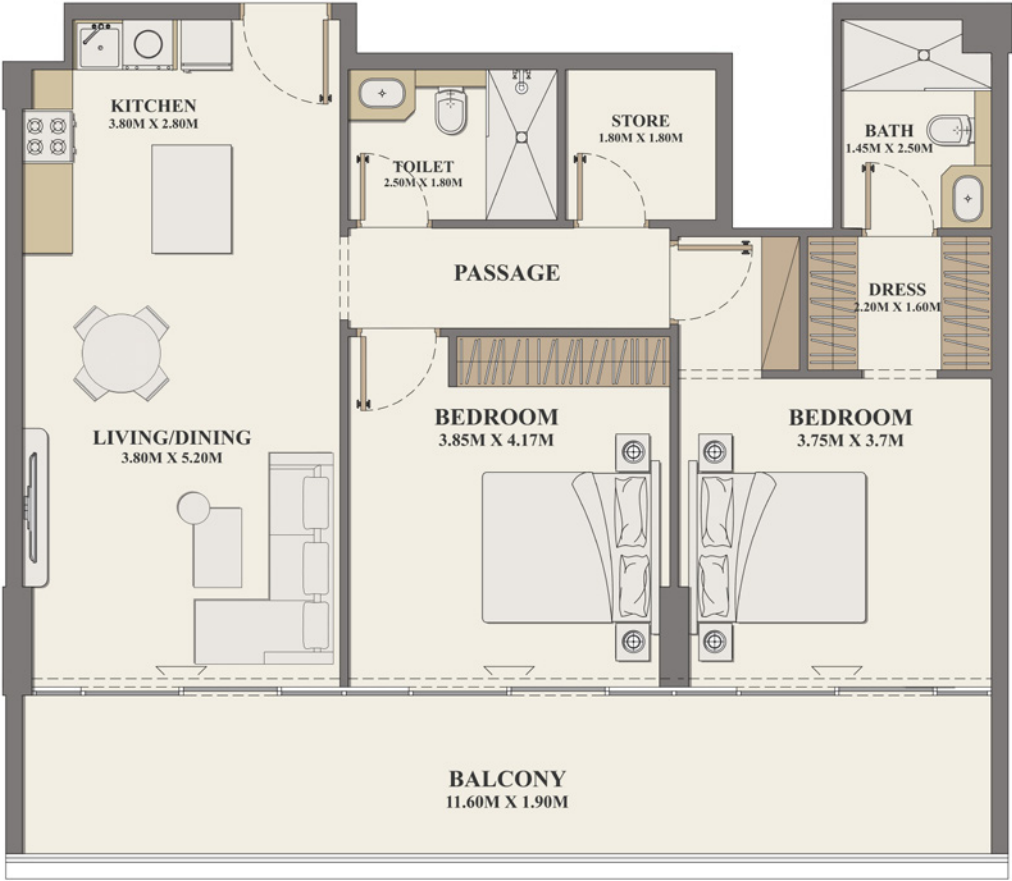
1 BEDROOM

Units	306, 506, 706
Internal Living Area	647.77 sq. ft.
Outdoor Living Area	167.06 sq. ft.
Total Living Area	814.83 sq. ft.



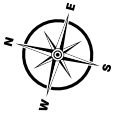
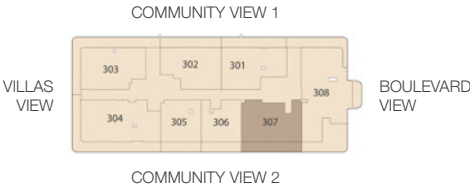
CÉLESTE HEIGHTS

BY ZIMAYA



2 BEDROOM + STORE

Units	307, 507, 707
Internal Living Area	962.83 sq. ft.
Outdoor Living Area	249.62 sq. ft.
Total Living Area	1212.45 sq. ft.

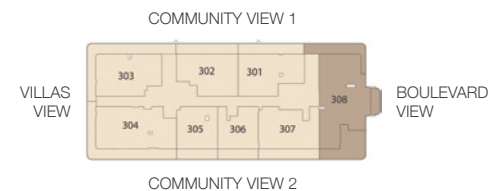
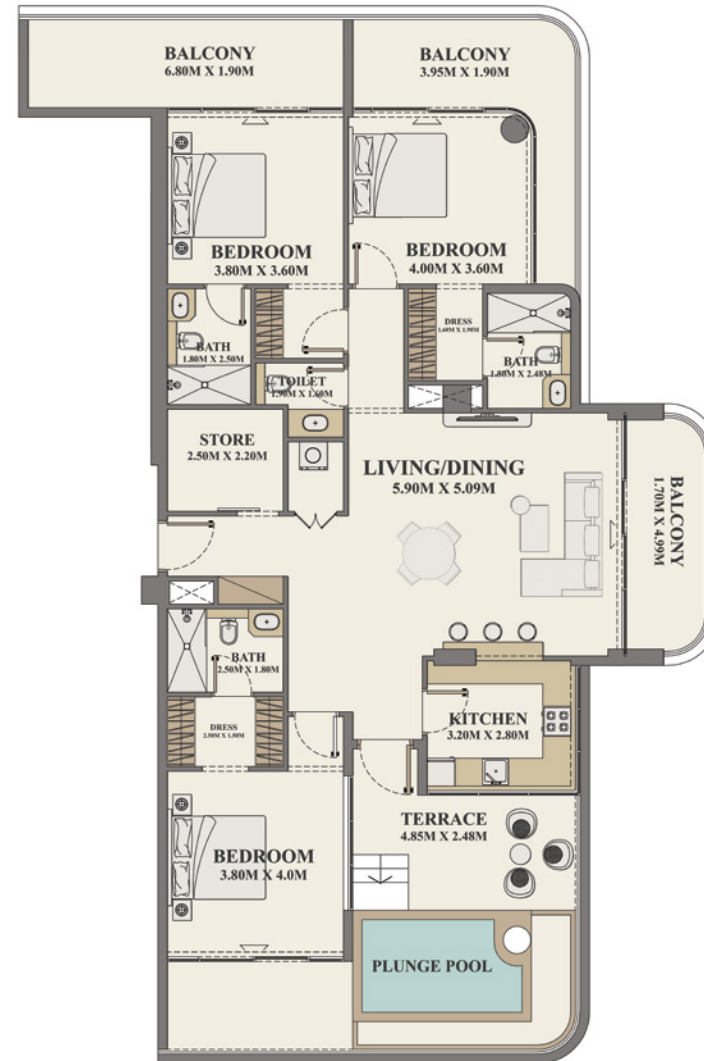


CÉLESTE HEIGHTS

BY ZIMAYA

3 BEDROOM + STORE + POOL

Units	308, 508, 708
Internal Living Area	1564.83 sq. ft.
Outdoor Living Area	778.98 sq. ft.
Total Living Area	2343.52 sq. ft.



CÉLESTE HEIGHTS

BY ZIMAYA

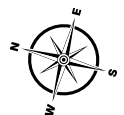
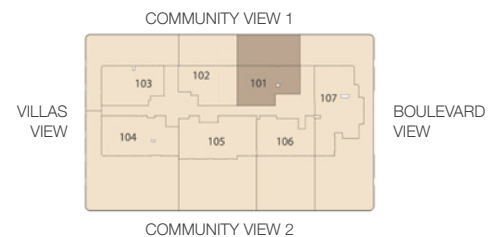
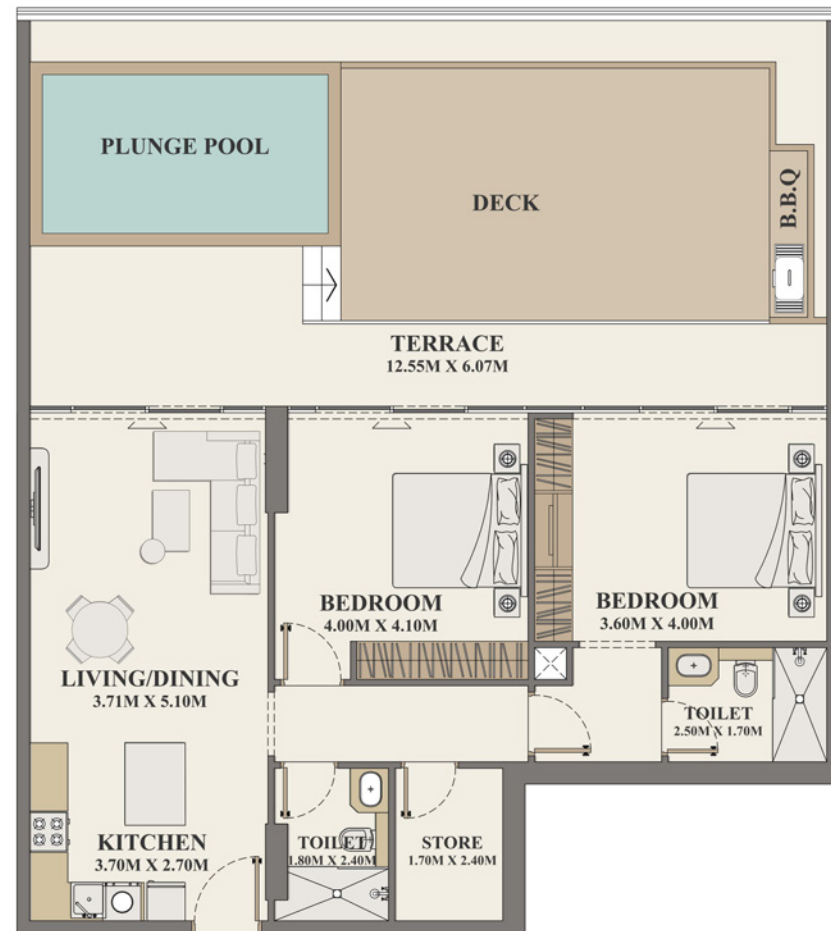
SIGNATURE 2 BEDROOM + STORE + POOL

Units **101**

Internal Living Area 988.56 sq. ft.

Outdoor Living Area 857.24 sq. ft.

Total Living Area 1845.80 sq. ft.



CÉLESTE HEIGHTS

BY ZIMAYA

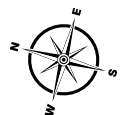
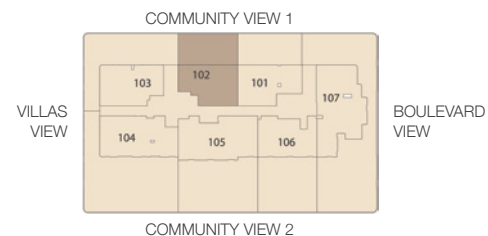
SIGNATURE 2 BEDROOM + STORE + POOL

Units **102**

Internal Living Area 936.35 sq. ft.

Outdoor Living Area 795.88 sq. ft.

Total Living Area 1732.24 sq. ft.



CĒLESTE HEIGHTS

BY ZIMAYA

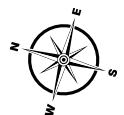
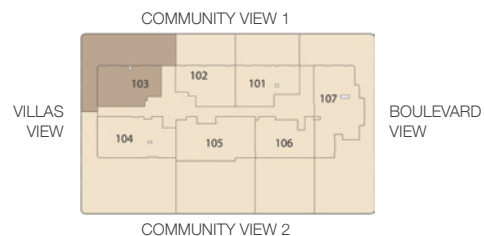
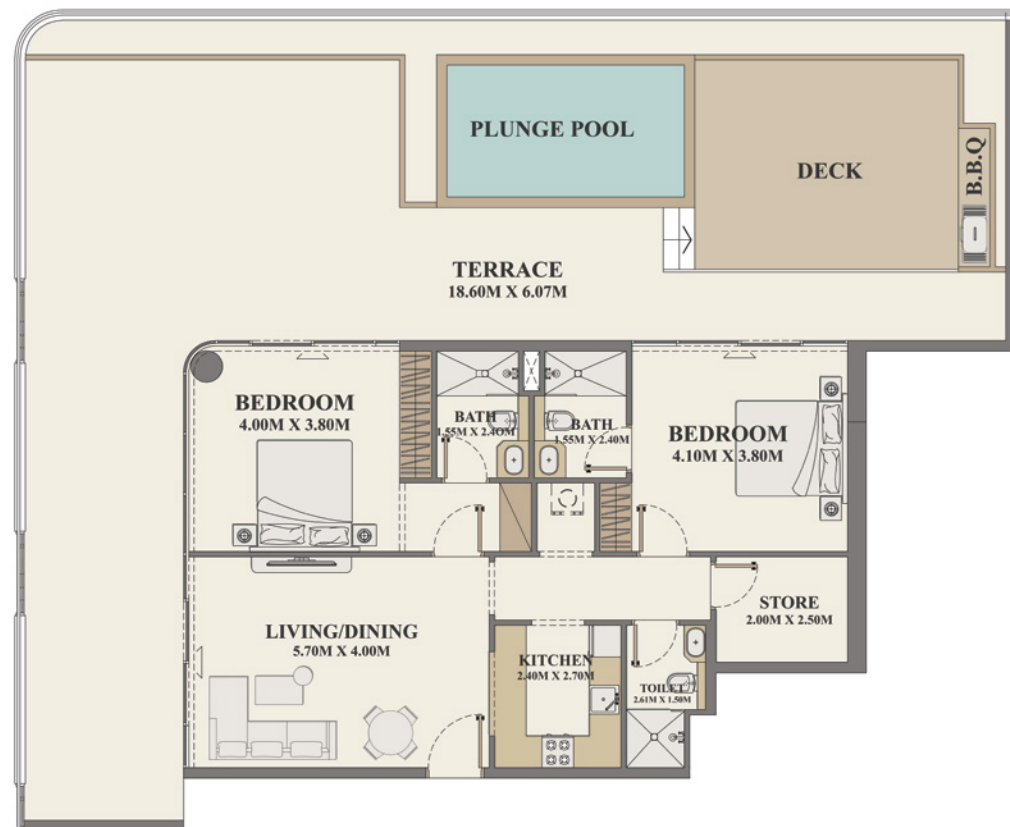
SIGNATURE 2 BEDROOM + STORE + POOL

Units **103**

Internal Living Area 1046.36 sq. ft.

Outdoor Living Area 1580.36 sq. ft.

Total Living Area 2626.72 sq. ft.



CÉLESTE HEIGHTS

BY ZIMAYA

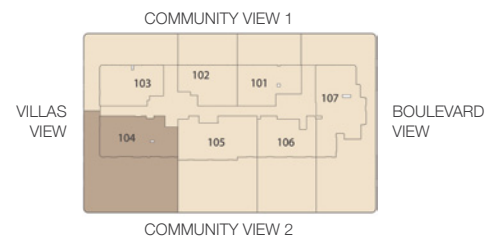
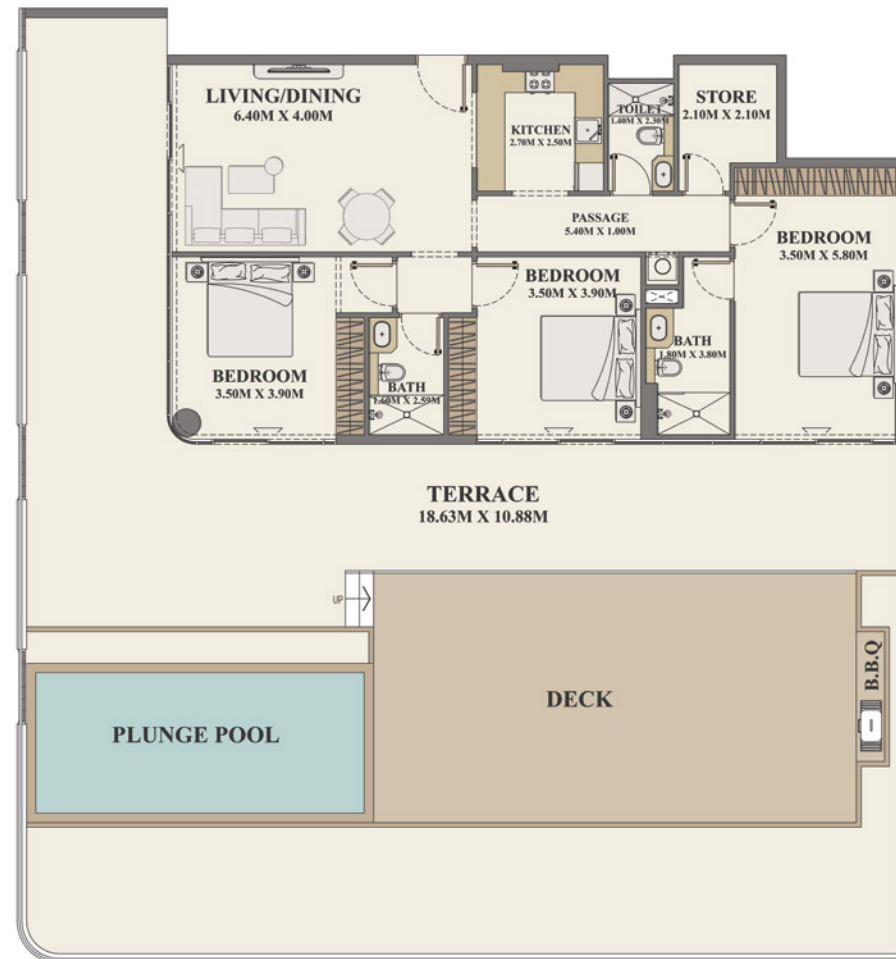
SIGNATURE 3 BEDROOM + STORE + POOL

Units **104**

Internal Living Area 1297.59 sq. ft.

Outdoor Living Area 2552.98 sq. ft.

Total Living Area 3850.57 sq. ft.

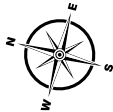
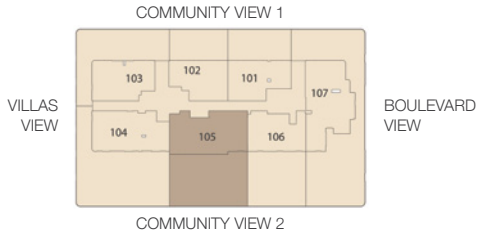
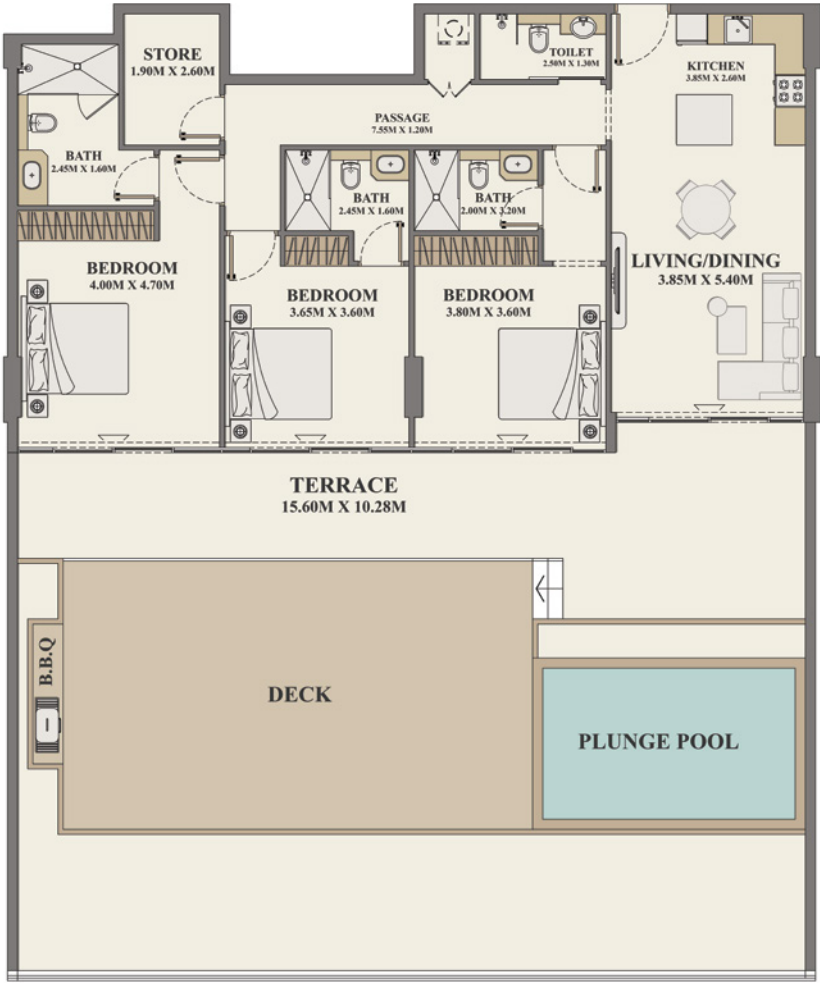


CÉLESTE HEIGHTS

BY ZIMAYA

SIGNATURE 3 BEDROOM + STORE + POOL

Units	105
Internal Living Area	1394.90 sq. ft.
Outdoor Living Area	1801.13 sq. ft.
Total Living Area	3196.02 sq. ft.



CÉLESTE HEIGHTS

BY ZIMAYA

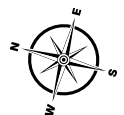
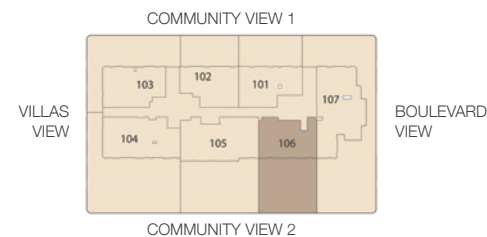
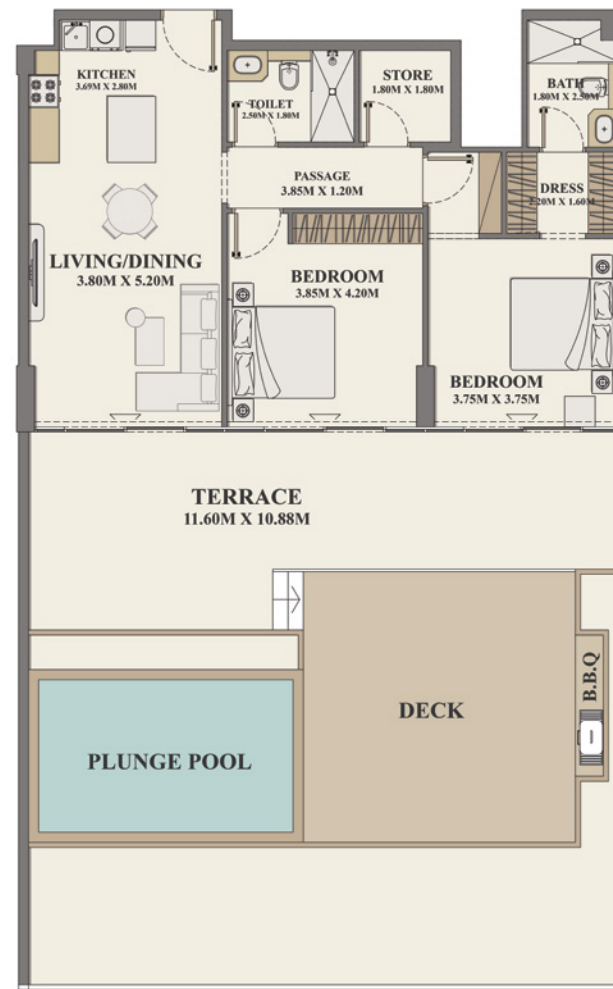
SIGNATURE 2 BEDROOM + STORE + POOL

Units **106**

Internal Living Area 962.83 sq. ft.

Outdoor Living Area 1402.32 sq. ft.

Total Living Area 2365.15 sq. ft.

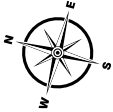
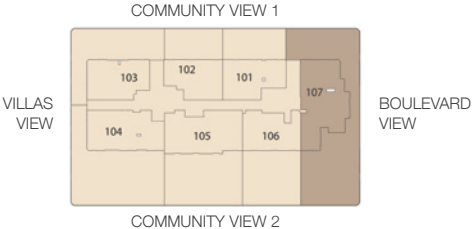


CÉLESTE HEIGHTS

BY ZIMAYA

SIGNATURE 3 BEDROOM + STORE + POOL

Units	107
Internal Living Area	1564.53 sq. ft.
Outdoor Living Area	3192.90 sq. ft.
Total Living Area	4757.43 sq. ft.





Office #107, Building #6, Bay Square,
Business Bay, Dubai, UAE.

    zimayaproperties

For more details, call 800ZIMAYA

DISCLAIMER:

1. All drawings and dimensions are approximate. |
2. Information is subject to change without prior notice at developer's absolute discretion. |
3. Actual area may vary from the stated area. |
4. Drawings not to scale. |
5. All images used are for illustrative purposes only and do not represent the actual size, features, specifications, fittings, and furnishings. |
6. The developer reserves the right to make revisions/alterations, at its absolute discretion, without any liability whatsoever. |
7. The units are taken from the typical floor of the of the building and columns may vary in size depending on the floor level.