

# PLAZA 2





THE COOL SHADE OF LIFE

---





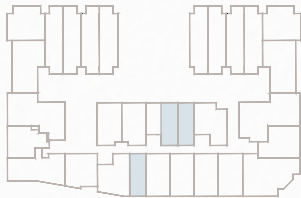
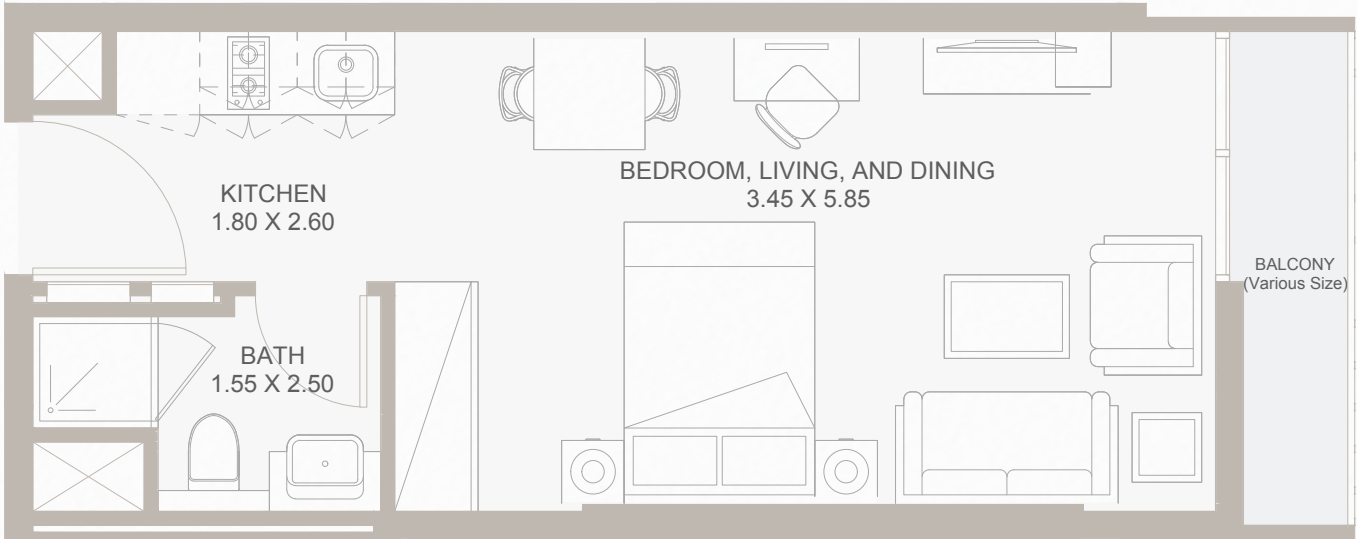
# UNIT TYPES & FLOOR PLANS

All drawings and dimensions are approximate. Drawings are not to scale and are subject to change without notice. The developer reserves the right to make revisions. The units are measured at typical floors in the building and columns may vary in size depending on the floor level. The furnishing and accessories shown are for representation only. The availability, length and width of the balcony varies depending on which floor and which orientation the unit is located within the building. There will be slight differences in the internal areas between the same unit types depending on the shaft sizes that go through the units.



# STD

TYPE - **A**

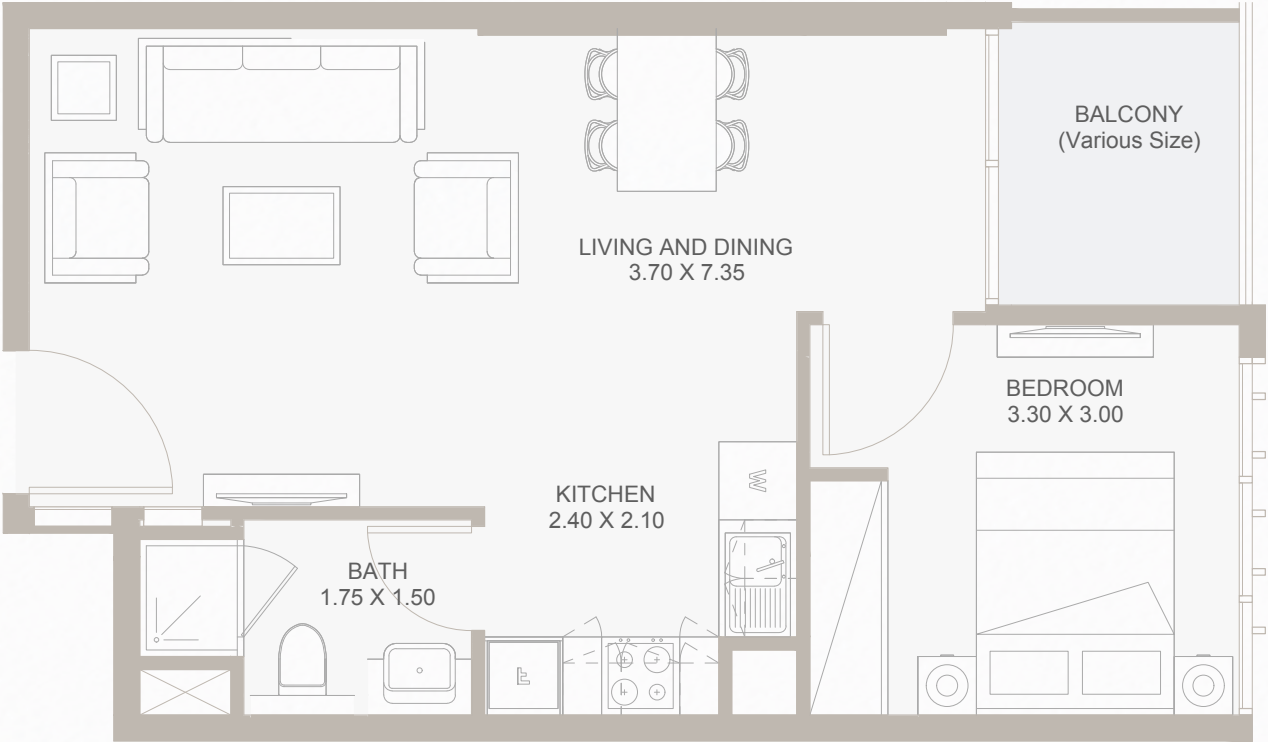


From Ground Floor to 5th Floor

Internal Area	327 to 331 sq.ft
Outdoor Area	35 to 78 sq.ft
Total Area	365 to 408 sq.ft

# J1B

TYPE - **A**

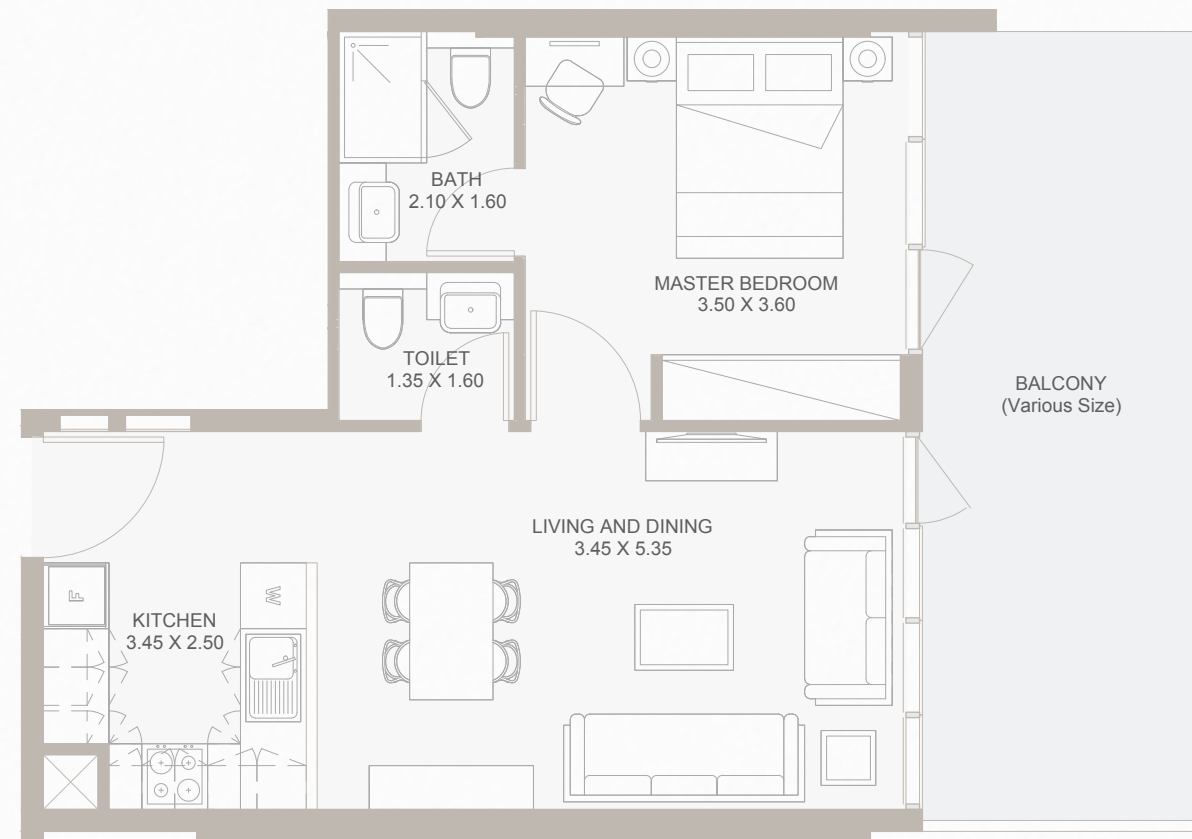


From Ground Floor to 5th Floor

Internal Area	489 sq.ft
Outdoor Area	50 sq.ft
Total Area	538 sq.ft

# 1B

## TYPE - A

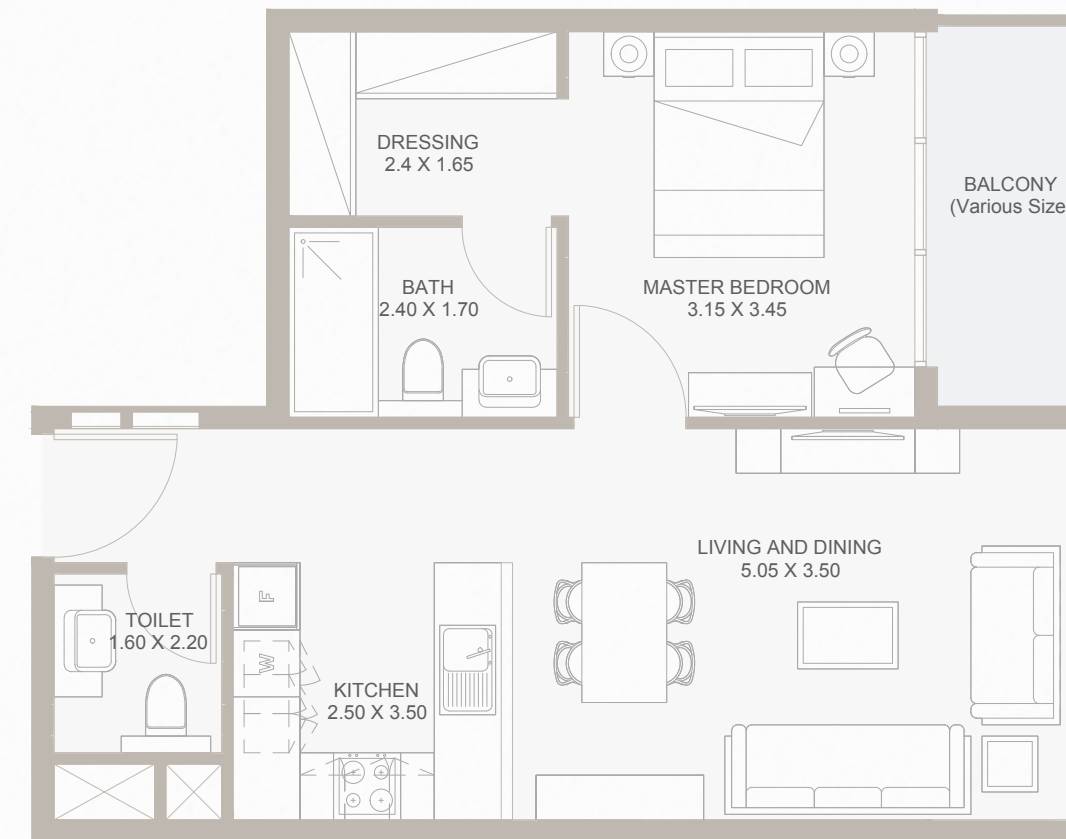


From Ground Floor to 5th Floor

Internal Area	529 to 534 sq.ft
Outdoor Area	49 to 211 sq.ft
Total Area	578 to 746 sq.ft

# 1B

## TYPE - B



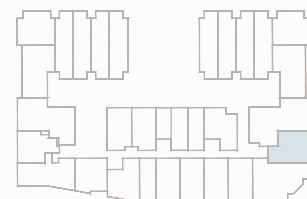
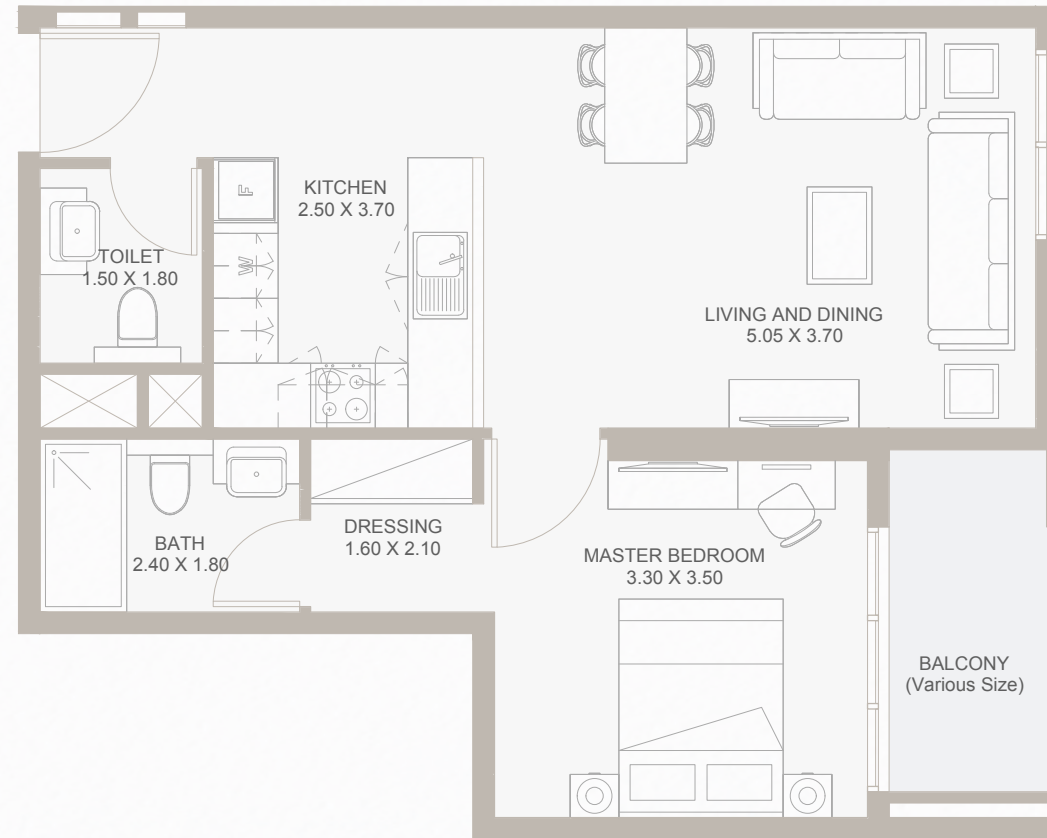
From 1st Floor to 5th Floor

Internal Area	587 sq.ft
Outdoor Area	56 sq.ft
Total Area	643 sq.ft



# 1B

TYPE - C

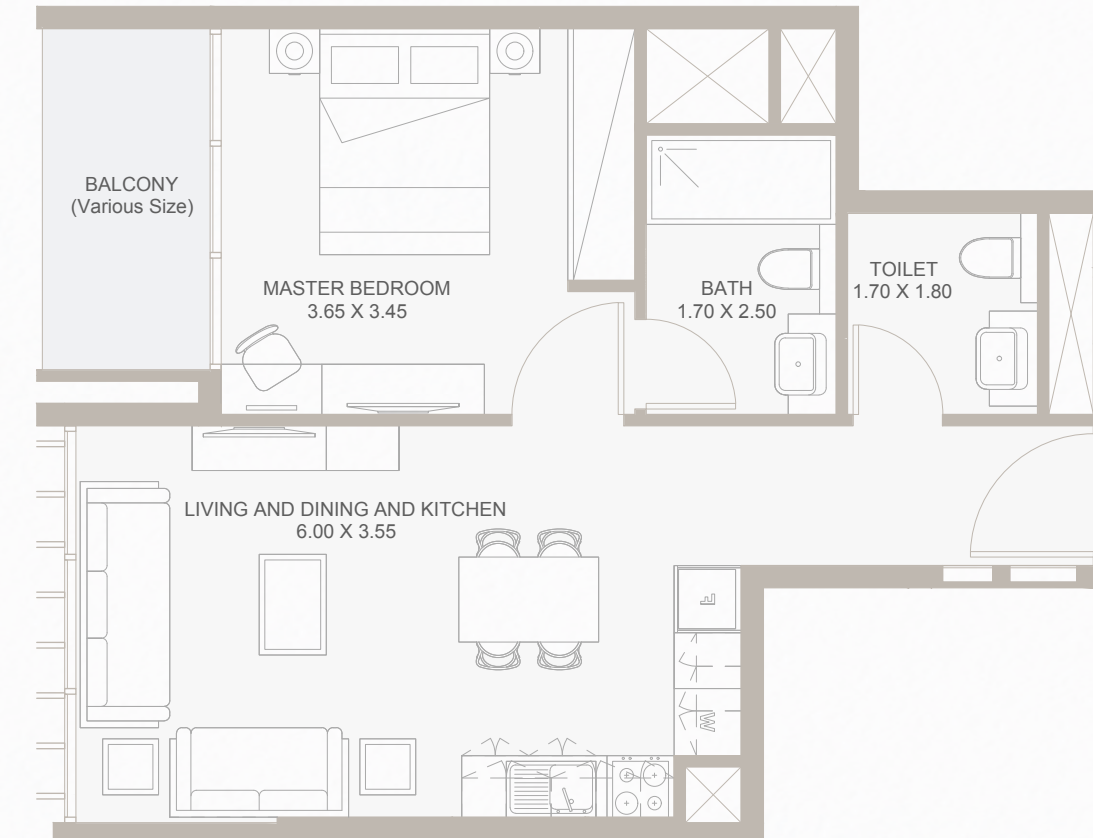


Ground Floor Plan

Internal Area	598 sq.ft
Outdoor Area	59 sq.ft
Total Area	657 sq.ft

# 1B

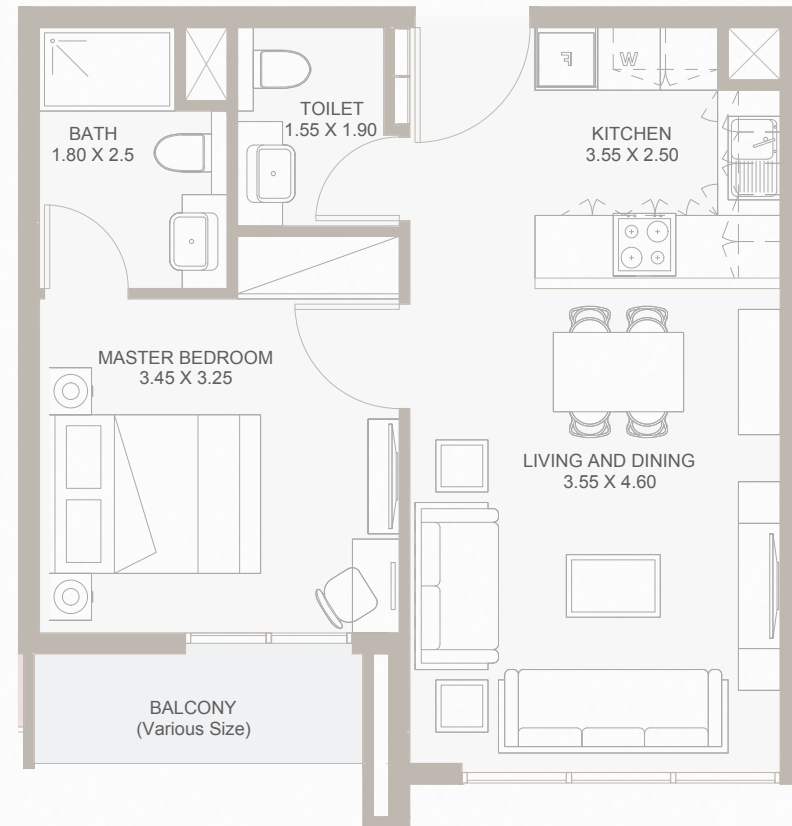
TYPE - D



From 1st Floor to 5th Floor

Internal Area	525 sq.ft
Outdoor Area	56 sq.ft
Total Area	582 sq.ft

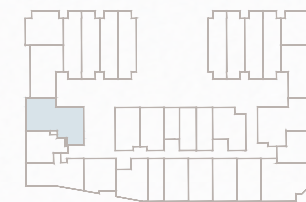
# 1B TYPE - E



From 2nd Floor to 5th Floor

Internal Area	513 sq.ft
Outdoor Area	60 sq.ft
Total Area	573 sq.ft

# 2B TYPE - A

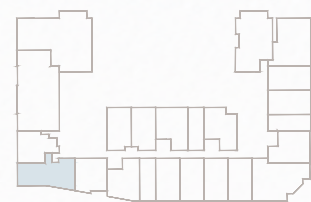
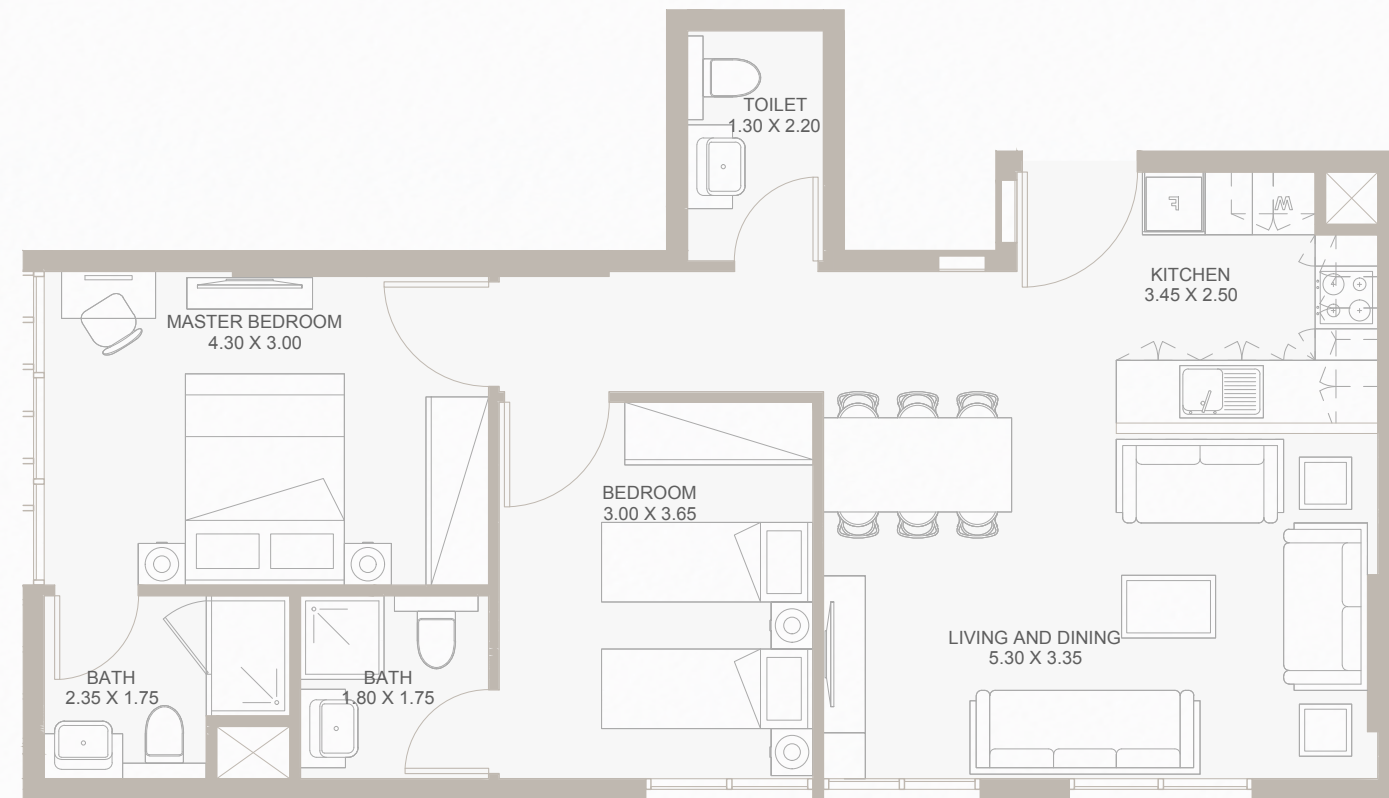


1st Floor , 2nd Floor & 5th Floor Plans

Internal Area	922 sq.ft
Outdoor Area	118 sq.ft
Total Area	1,040 sq.ft



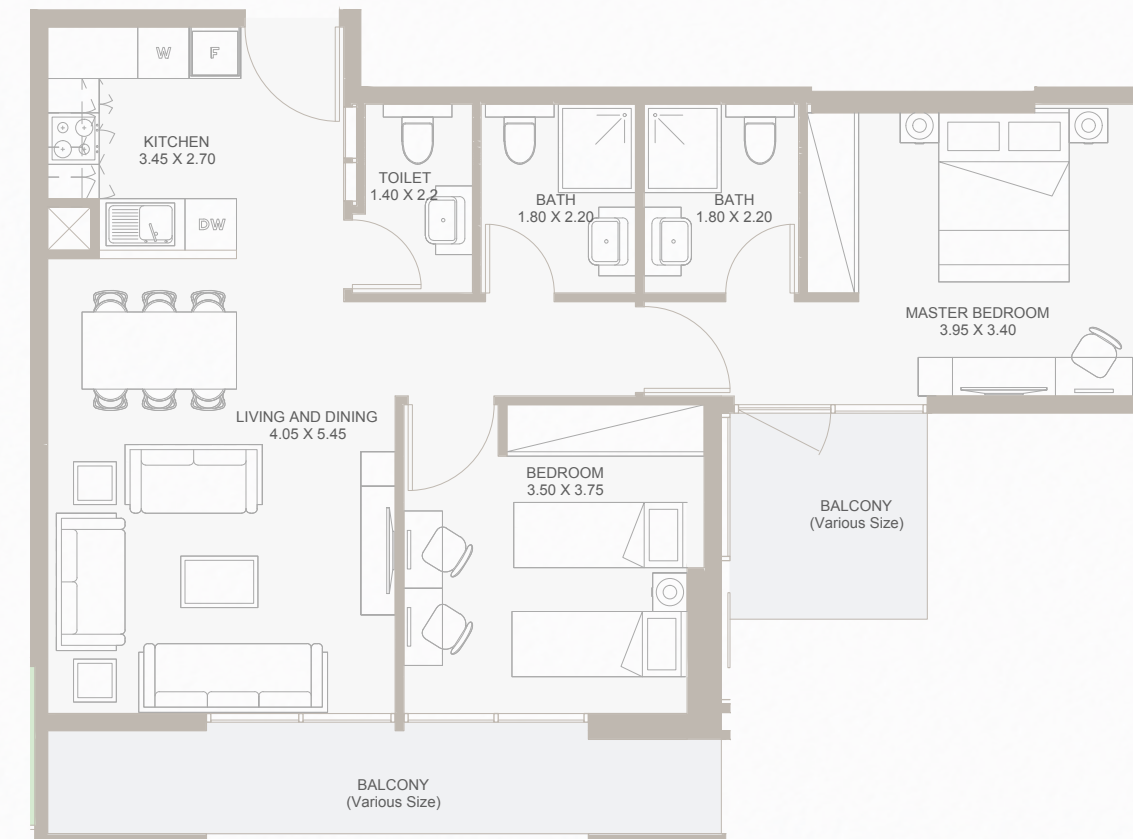
# 2B TYPE - B



From Ground Floor to 5th Floor

Internal Area	762 to 768 sq.ft
Outdoor Area	0 to 46 sq.ft
Total Area	766 to 813 sq.ft

# 2B TYPE - C

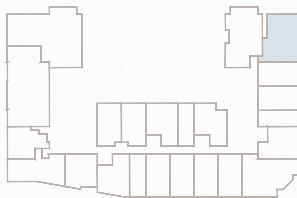
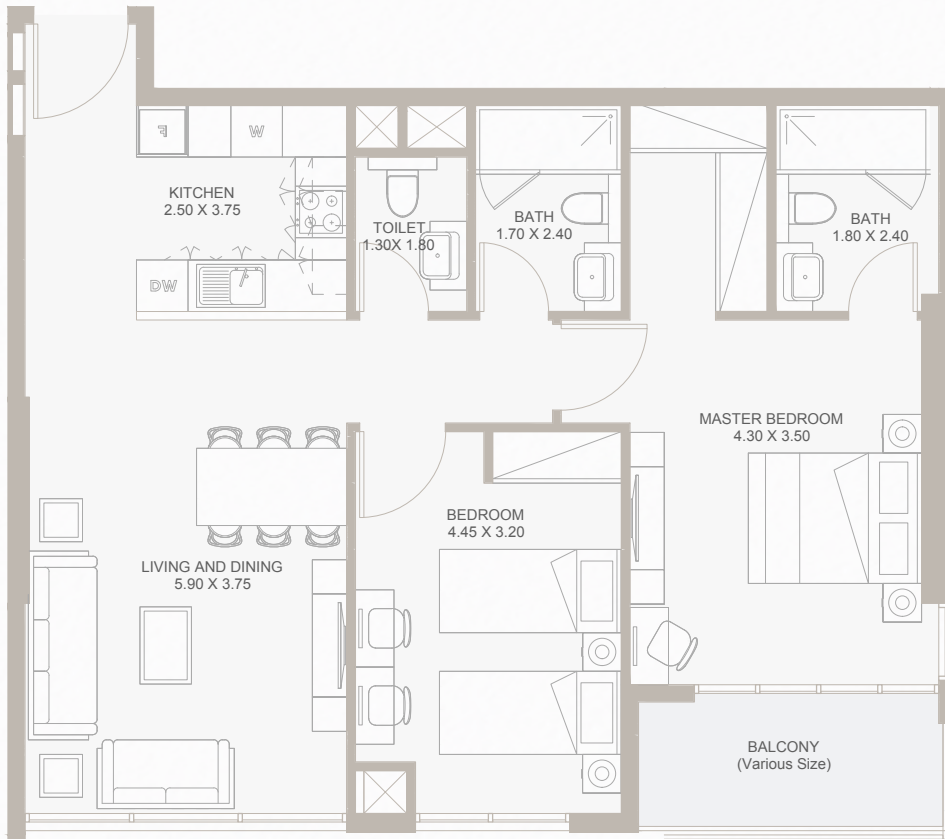


From 1st Floor to 5th Floor

Internal Area	849 sq.ft
Outdoor Area	214 sq.ft
Total Area	1,063 sq.ft



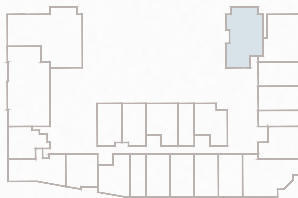
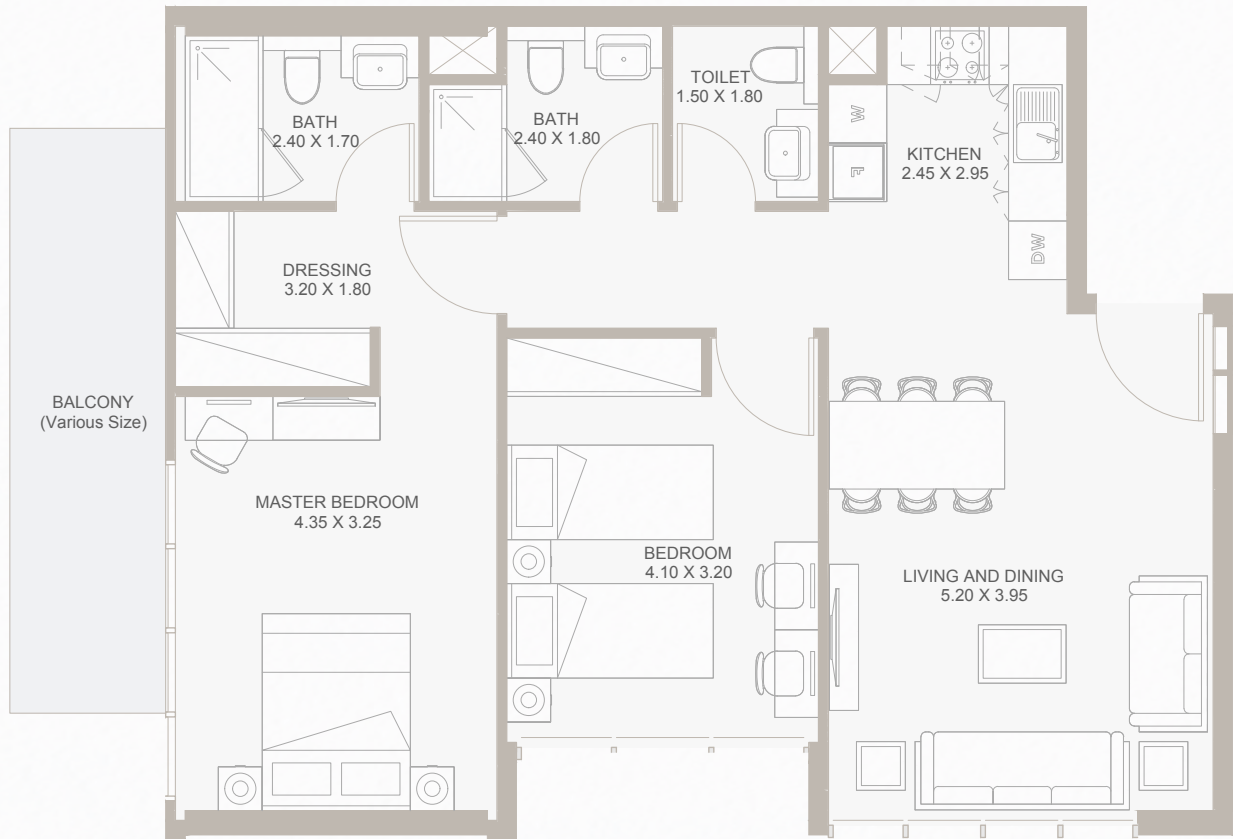
2B TYPE - D



From 3th Floor to 5th Floor

Internal Area	937 sq.ft
Outdoor Area	61 sq.ft
Total Area	997 sq.ft

2B TYPE - E

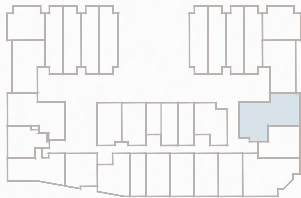


From 3th Floor to 5th Floor

Internal Area	884 to 886 sq.ft
Outdoor Area	112 to 113 sq.ft
Total Area	997 sq.ft



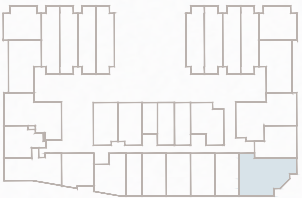
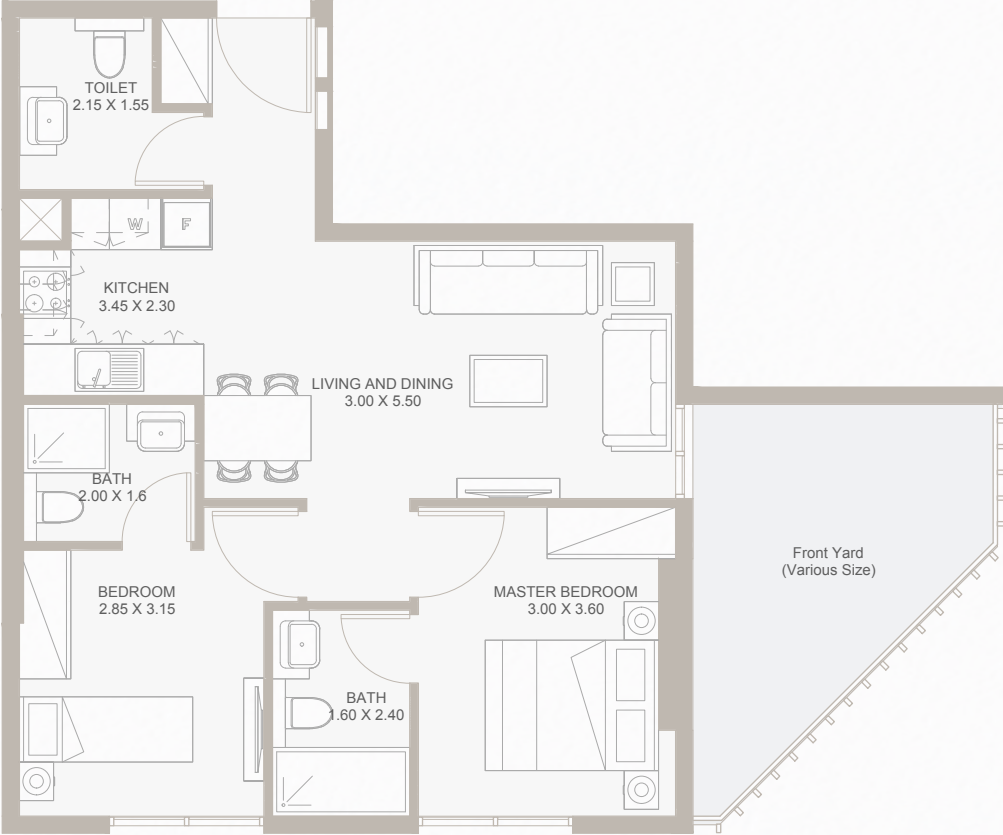
2B TYPE - F



1st Floor & 2nd Floor Plans

Internal Area	1,018 sq.ft
Outdoor Area	118 sq.ft
Total Area	1,136 sq.ft

2B TYPE - G

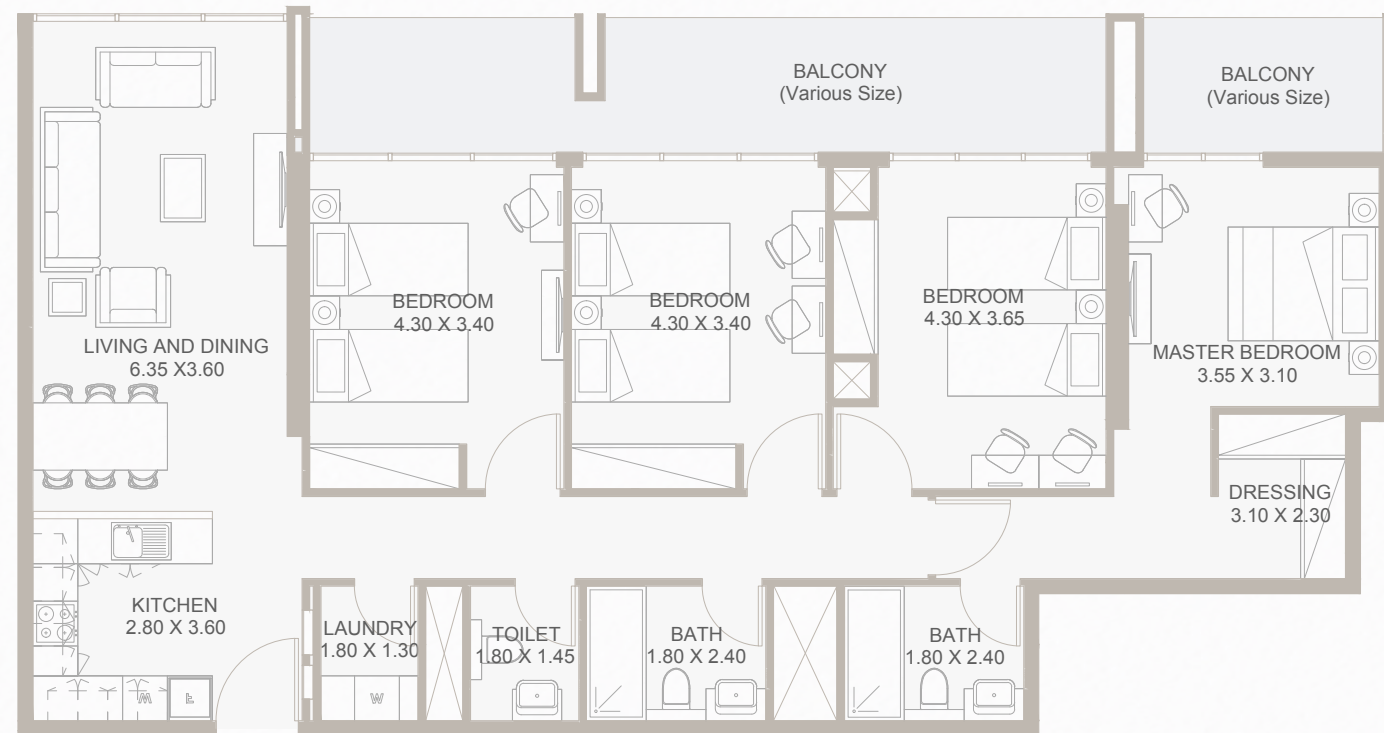


Ground Floor Plan

Internal Area	670 sq.ft
Outdoor Area	144 sq.ft
Total Area	813 sq.ft



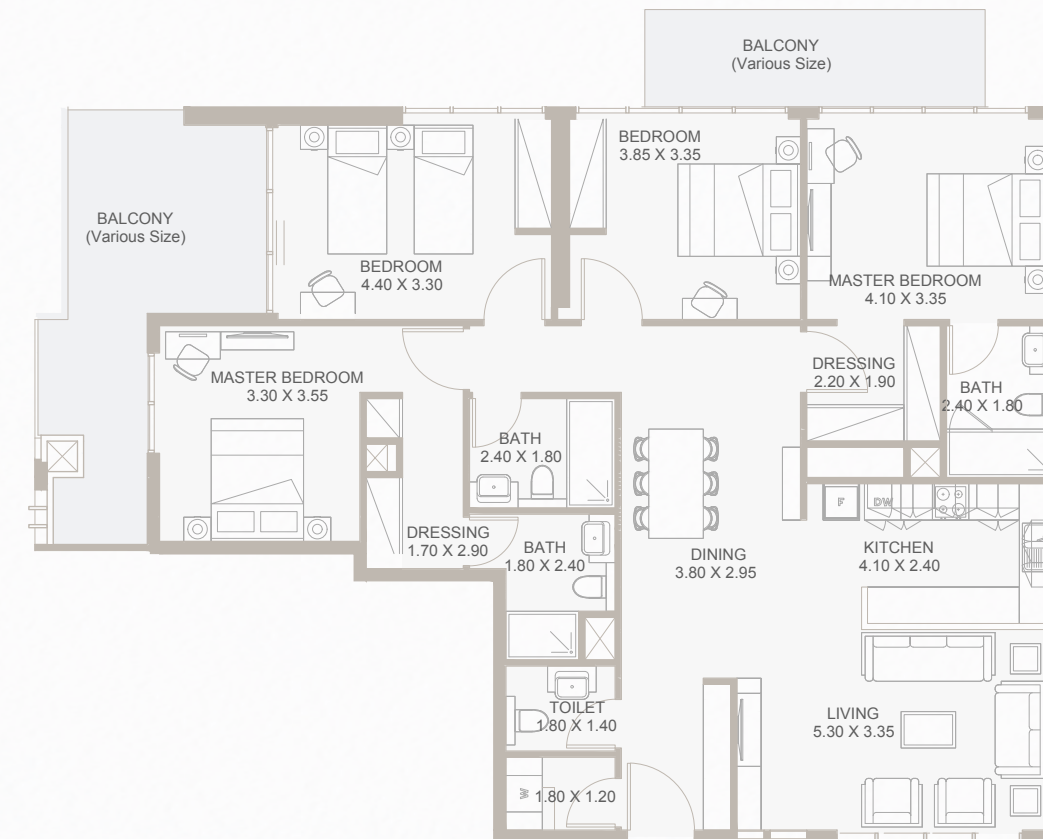
# 4B TYPE - A



3rd Floor & 4th Floor Plans

Internal Area	1,488 sq.ft
Outdoor Area	221 sq.ft
Total Area	1,709 sq.ft

# 4B TYPE - B

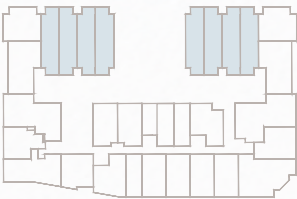


3rd Floor & 4th Floor Plans

Internal Area	1,472 sq.ft
Outdoor Area	410 sq.ft
Total Area	1,883 sq.ft



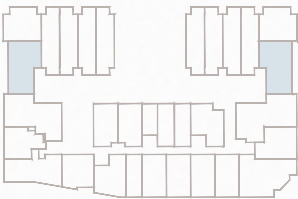
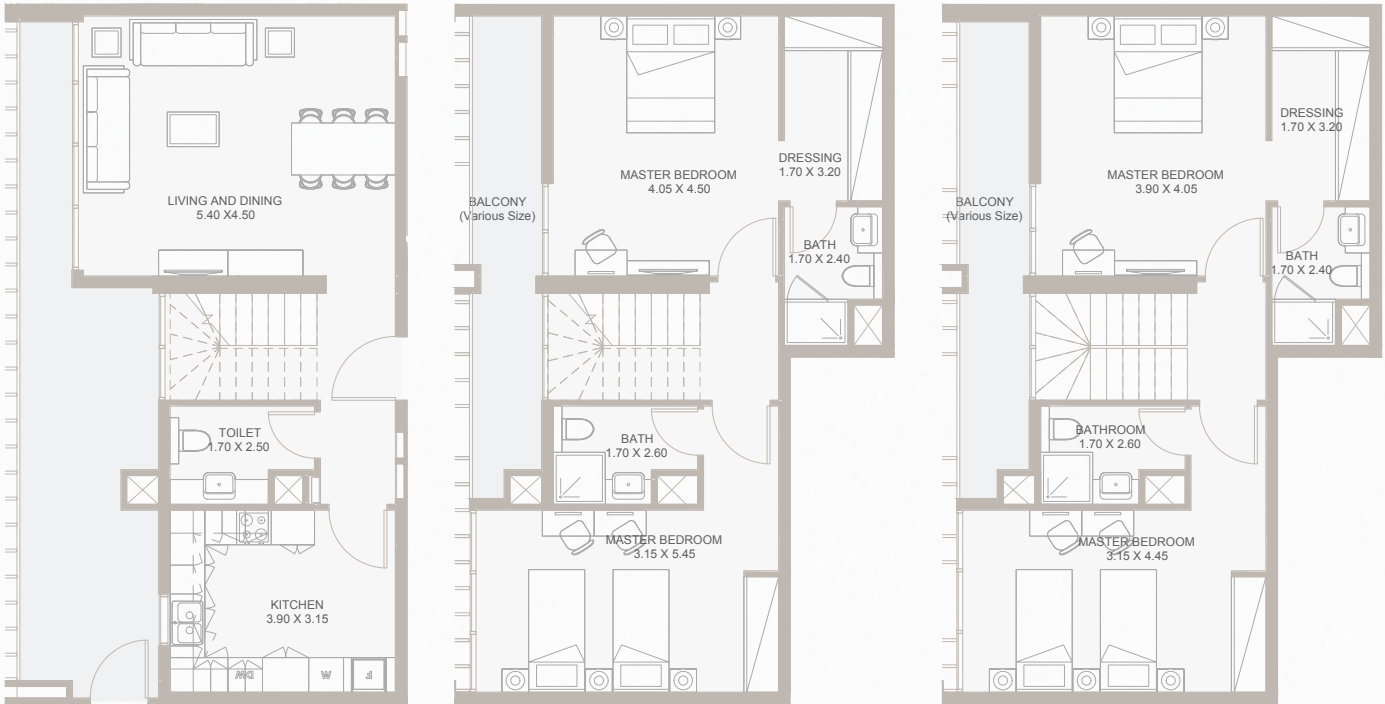
4B TOWNHOUSE - TYPE - A



GROUND FLOOR PLANS

Internal Area	1,540 sq.ft
Outdoor Area	487 sq.ft
Total Area	2,027 sq.ft

4B TOWNHOUSE - TYPE - B

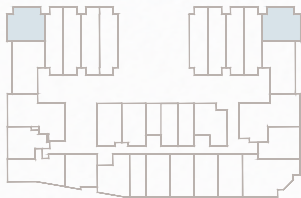


GROUND FLOOR PLANS

Internal Area	1,950 sq.ft
Outdoor Area	566 sq.ft
Total Area	2,516 sq.ft



# 4B TOWNHOUSE - TYPE - C



GROUND FLOOR PLANS

Internal Area	1,689 to 1,700 sq.ft
Outdoor Area	520 to 523 sq.ft
Total Area	2,209 to 2,223 sq.ft





## REACH US

### ABU DHABI - UAE

28th Floor, Tamouh Tower, Marina Square, Al Reem Island, Abu Dhabi, UAE.  
T: 800 77 552 | M: +971502441078 | [info@reportageuae.com](mailto:info@reportageuae.com)

### DUBAI - UAE

Office 301, 3rd Floor, Oberoi Centre, Business Bay, Dubai, UAE.  
T: 800 77 552 | [info@reportageuae.com](mailto:info@reportageuae.com)

### CAIRO - EGYPT

The Waterway, Mohammed Naguib, B1 Office BF06, New Cairo -Egypt  
T: +20 17 023 | [marketing@reportageeg.com](mailto:marketing@reportageeg.com)

### RIYADH - KSA

Building No. 3230, Al Aflaj St., Al Suwaidi, P.O. Box 12791  
T: +966 11 215 1110 | [info@reportageuae.com](mailto:info@reportageuae.com)

### ISTANBUL - TURKEY

Levent, Tekfen Tower, 8th Floor, Office 31, Büyükdere St., P.O. Box 34394, Şişli  
T: +90 530 774 9595 | [info@reportageuae.com](mailto:info@reportageuae.com)







# **Reportage.**

## **Properties**