




# Binghatti Heights

Jumeirah Village Circle





**Presenting Binghatti Heights at JVC, a newly launched residential venture by Binghatti Developers that offers elegant design 1, 2 & 3 bedroom apartments within Dubai. Branded with the developer's signature style color, whereas presents residents access to a host of leisure lifestyle attractions. With the development made accessible in various sizes, the aim is to give open living spaces laced with high-end interiors and fittings. To enhance your overall lifestyle, the idea is to present a general design for everyone with uncompromised quality. The development has been planned specifically, focusing on considering the necessities and inclination of families and business professionals. The residences are crafted with great precision to detail, where the high-end design architecture features interiors from the top-of-the-line leading experts. The peaceful and quiet ambiance of the development offers you a relaxed vibe and being away from the city crowd, where you and your family can have some extra time. Further, these exclusive apartments are made available with attractive payment plan options, so you can easily book one of the residences with relative ease.**

# KEY FEATURES

- **B+G+5P+30Floors**
- **Infinity swimming pools**
- **Gymnasium**
- **Kids playground**
- **Health club**
- **Sauna**
- **Covered parking space**
- **Retail Areas in vicinity**
- **Situated within Jumeirah Village Circle**
- **Perfect family-friendly development**
- **Investment-friendly with high ROI assured**



# THE LOCATION



**Mall of Emirates  
(10 Minutes)**

**Downtown and Dubai  
Mall  
(15 Minutes)**

**DXB International Airport  
(30 Minutes)**

**The pointe  
(25 Minutes)**

**DWC Airport  
(30 Minutes)**

**Burj Al Arab  
(20 Minutes)**





**Jumeirah Village Circle, or JVC, is an evolving community for families, couples, and even singles who wants to be close enough to the city but still seek a component of peace. The popular community is located in the heart of new Dubai. It is surrounded by landscaped gardens and greeneries with a range of over 2,800 spacious villas, townhouses, and apartments. JVC provides its residents with a fun and safe environment. One can enjoy living in a village-like community in an urban setting.**



# PLANNED FOR PRACTICALITY

**A variety of apartment types assure comfortable living spaces for every resident. Each apartment's distinctive design is implemented without compromising practicality. The interiors were meticulously planned to maximize convenience without compromising elegance.**



# SPACIOUS AND SPLENDID

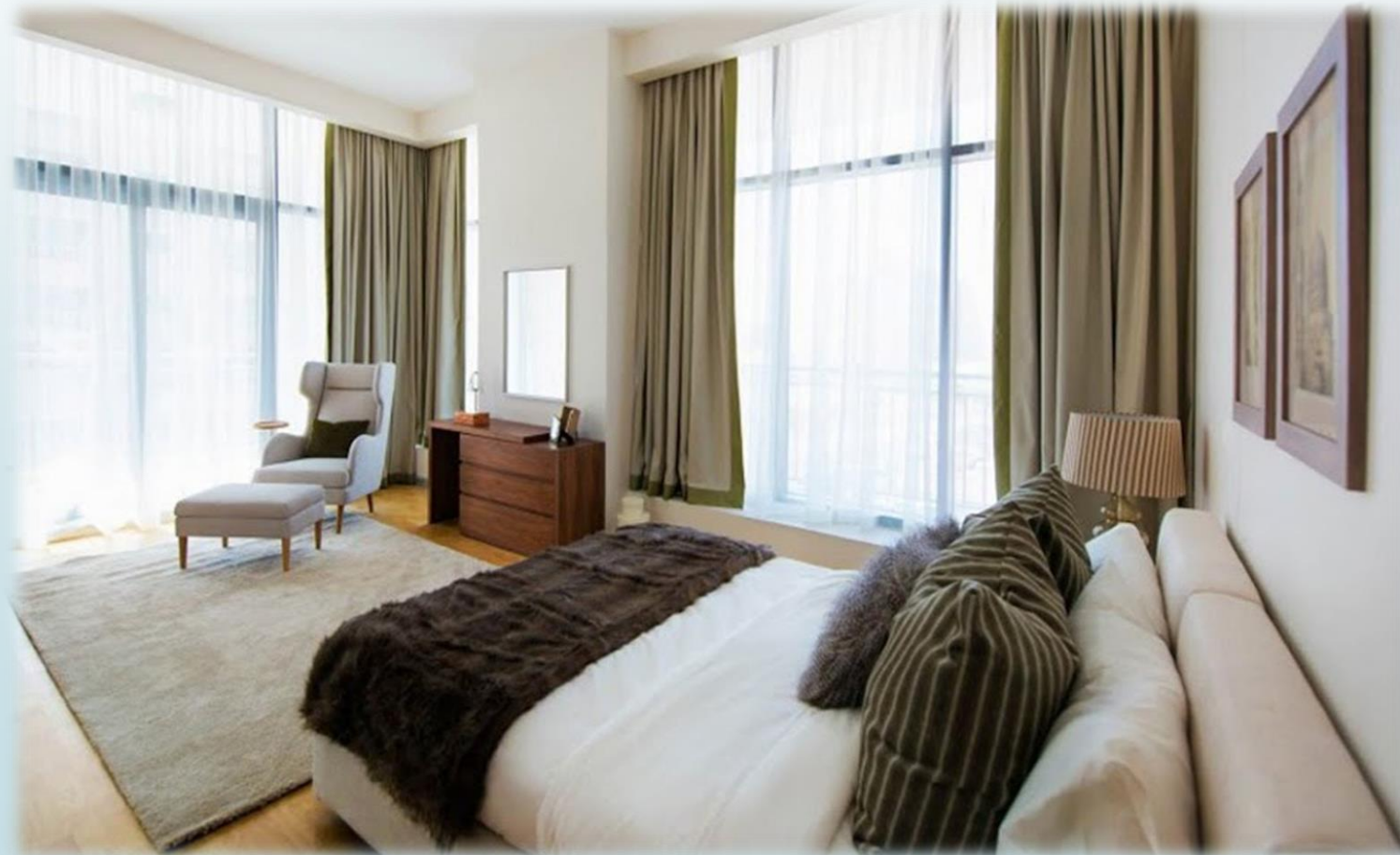
**The 2-bedroom apartments in Binghatti Heights are an abode of repose. The plush interiors offer a perfect balance of pragmatic design and modern form. Replete with modern fixtures and furnishings, these apartments are an ideal choice for families.**





# IMPECCABLE DETAIL

The lavish materials and uncompromised finishing throughout the building depict supreme quality and craftsmanship from only the most distinguished of international suppliers. All the fittings and fixtures within the apartments are hand-picked to perfectly compliment the interior design. The sliding glass doors and windows create a perfect balance between interior and exterior spaces while maintaining the highest level of environmental control and functionality.



# LIFESTYLE AND AMENITIES

Binghatti Developers' focus on providing world-class lifestyle amenities is unrivaled throughout Dubai. The health club area at Binghatti Heights promotes a family-friendly atmosphere for all residents to enjoy. Meet your fitness goals in the modern health club by Technogym. Experience utmost relaxation and immerse yourself in the heat monitored swimming pool.

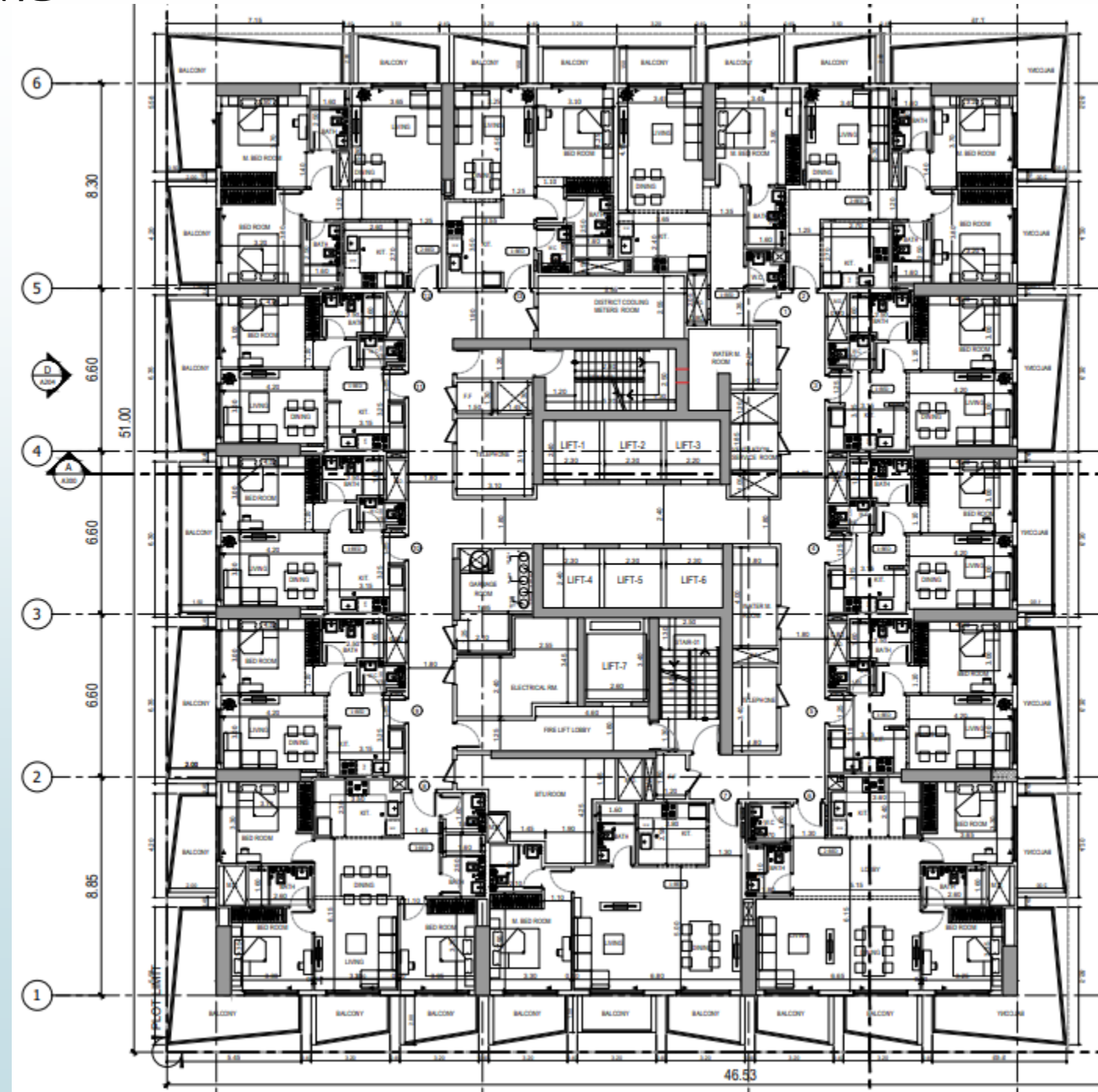




# FLOOR PLANS

## TYPICAL FLOOR PLAN 2<sup>ND</sup>-10<sup>TH</sup> FLOOR

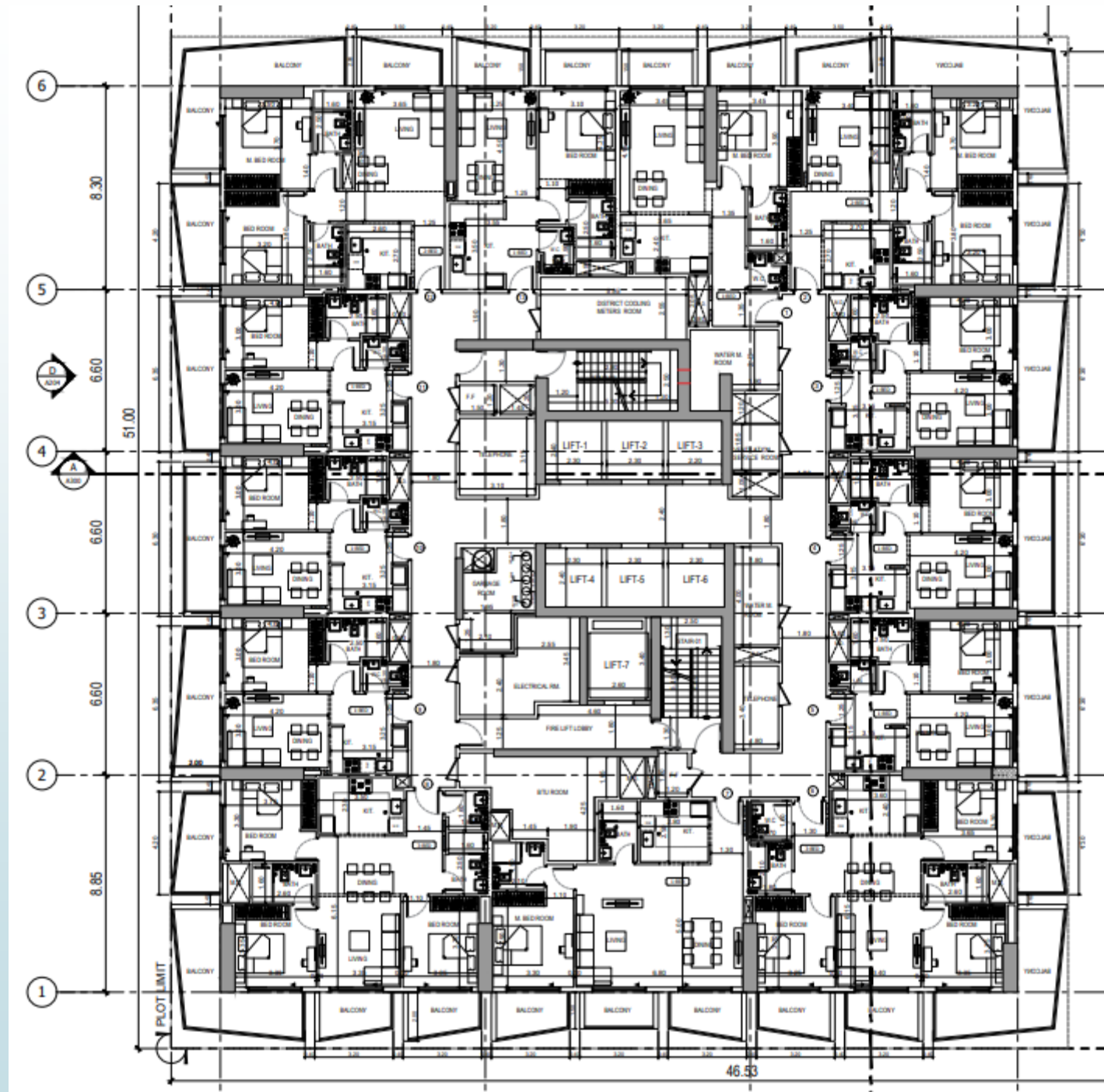
1 Bedroom	9
2 Bedroom	3
3 Bedroom	1
TOTAL	13



# FLOOR PLANS

## TYPICAL FLOOR PLAN 11<sup>TH</sup>-30<sup>TH</sup> FLOOR

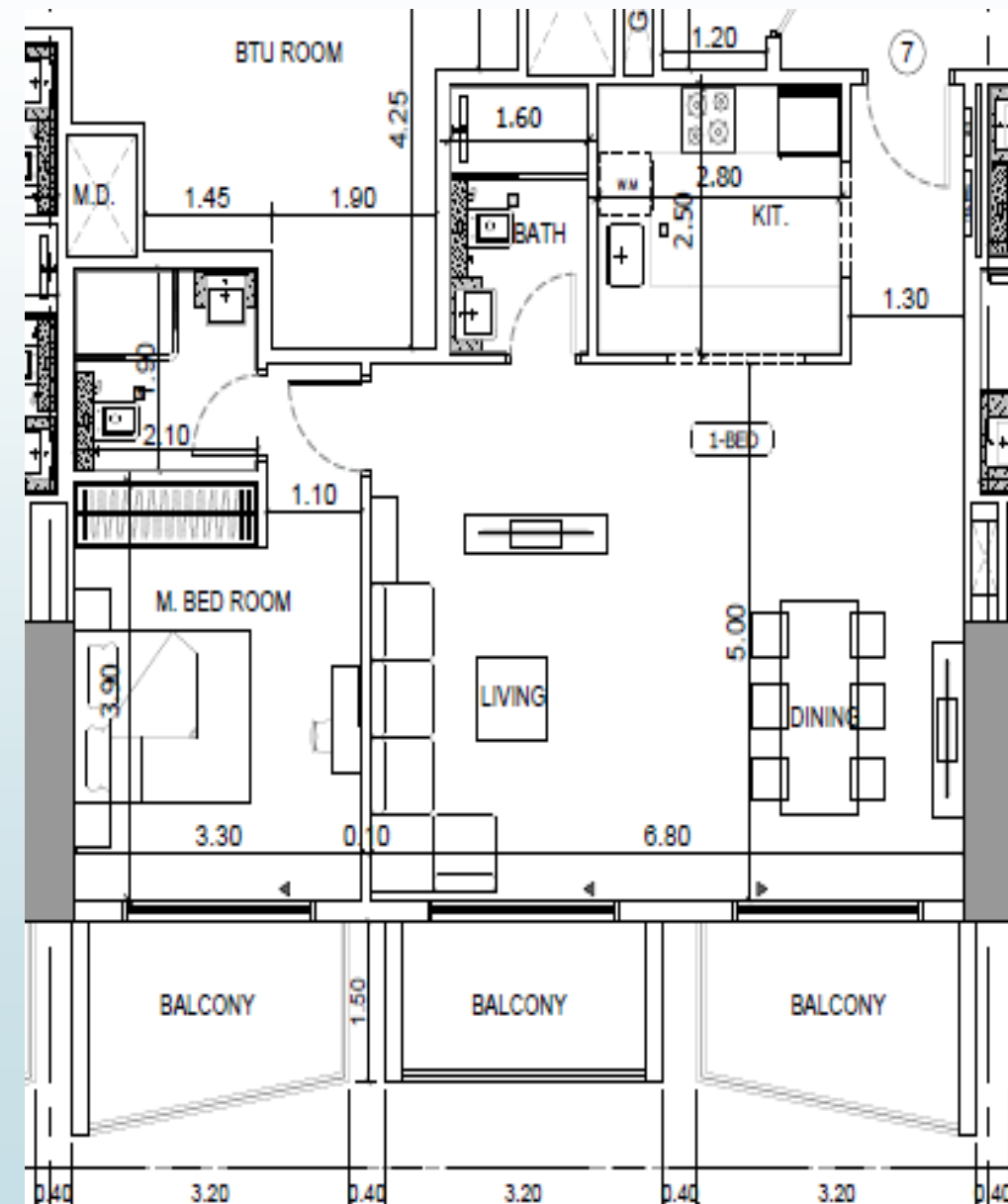
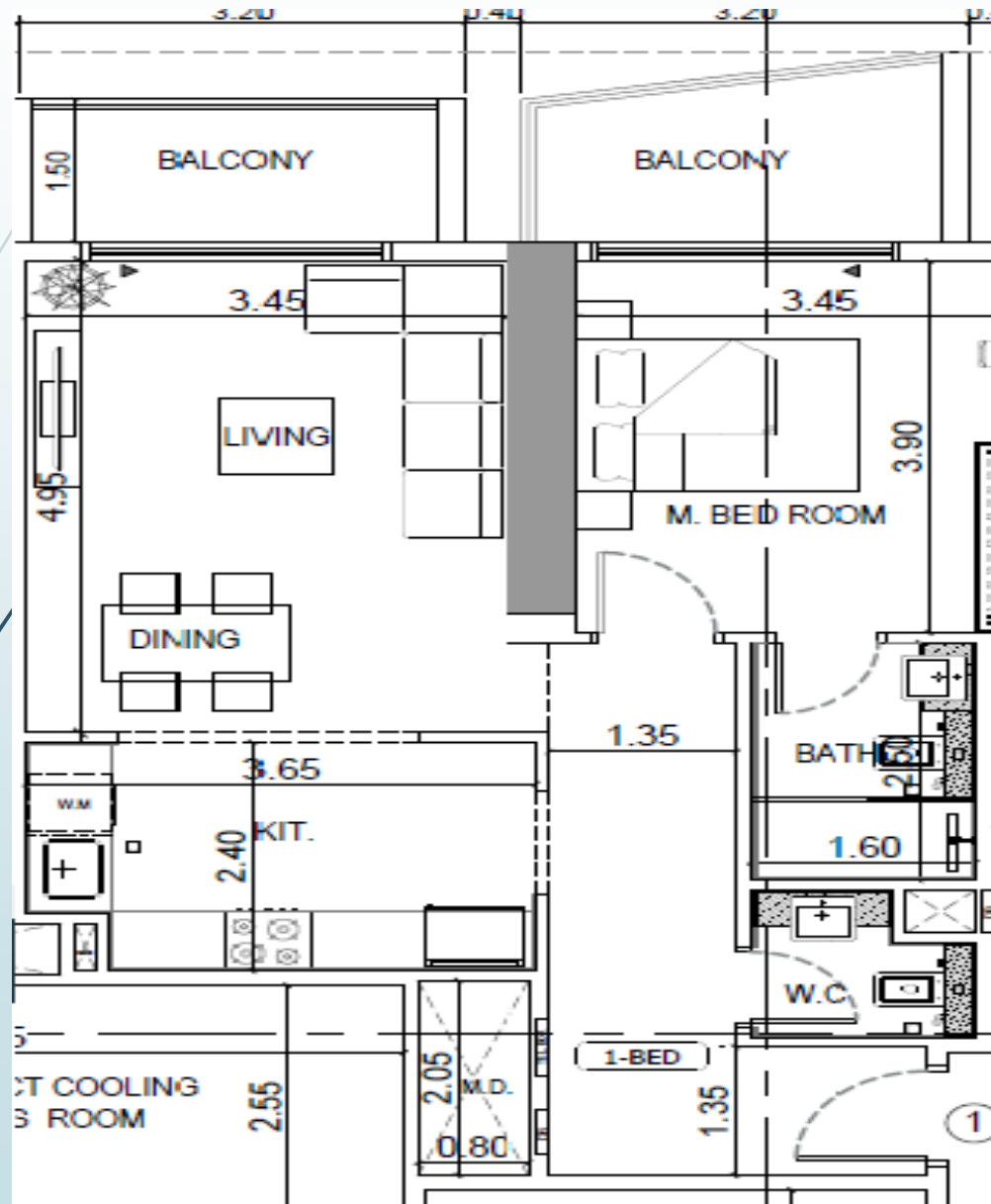
1 Bedroom	9
2 Bedroom	2
3 Bedroom	2
TOTAL	13





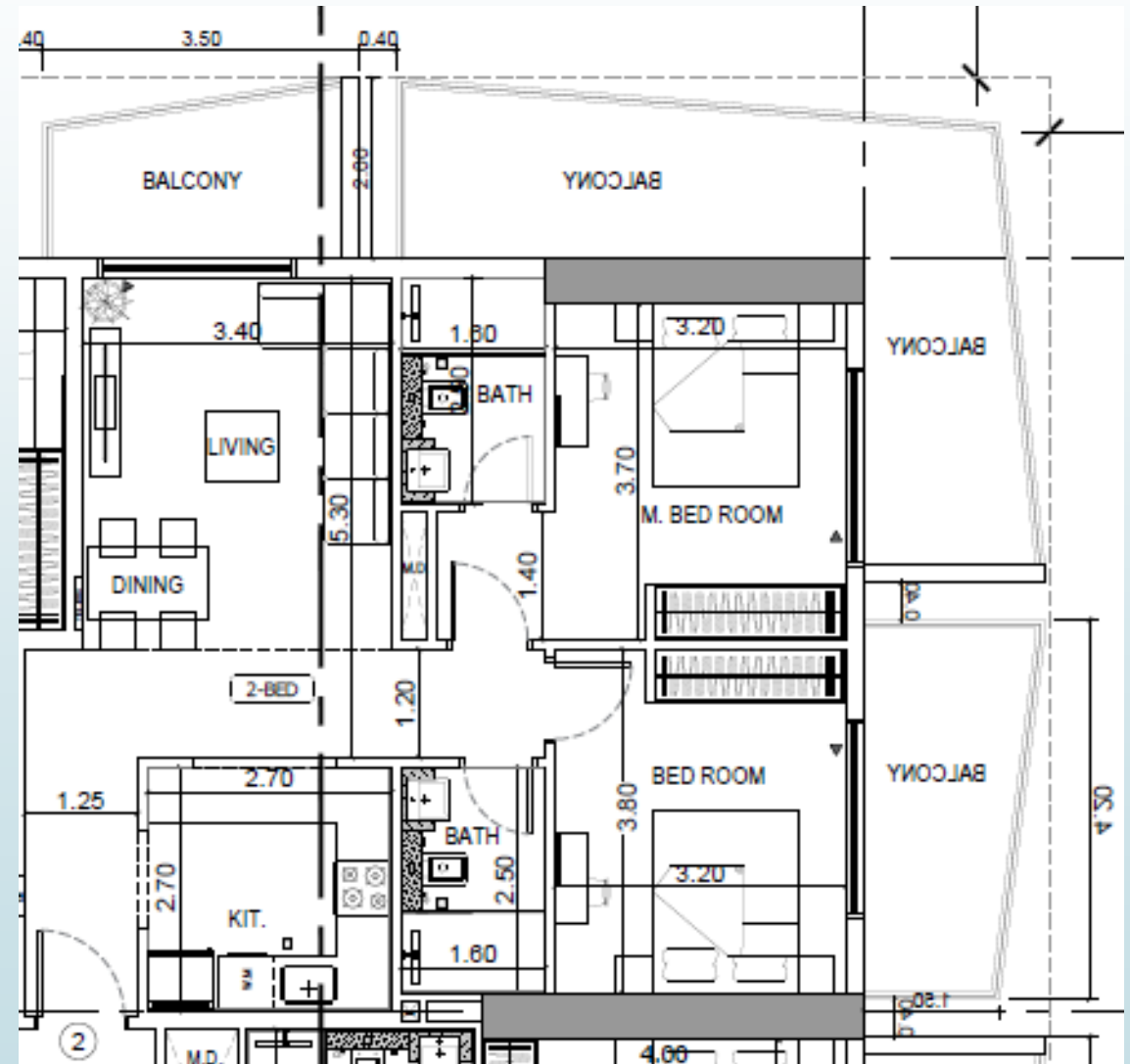
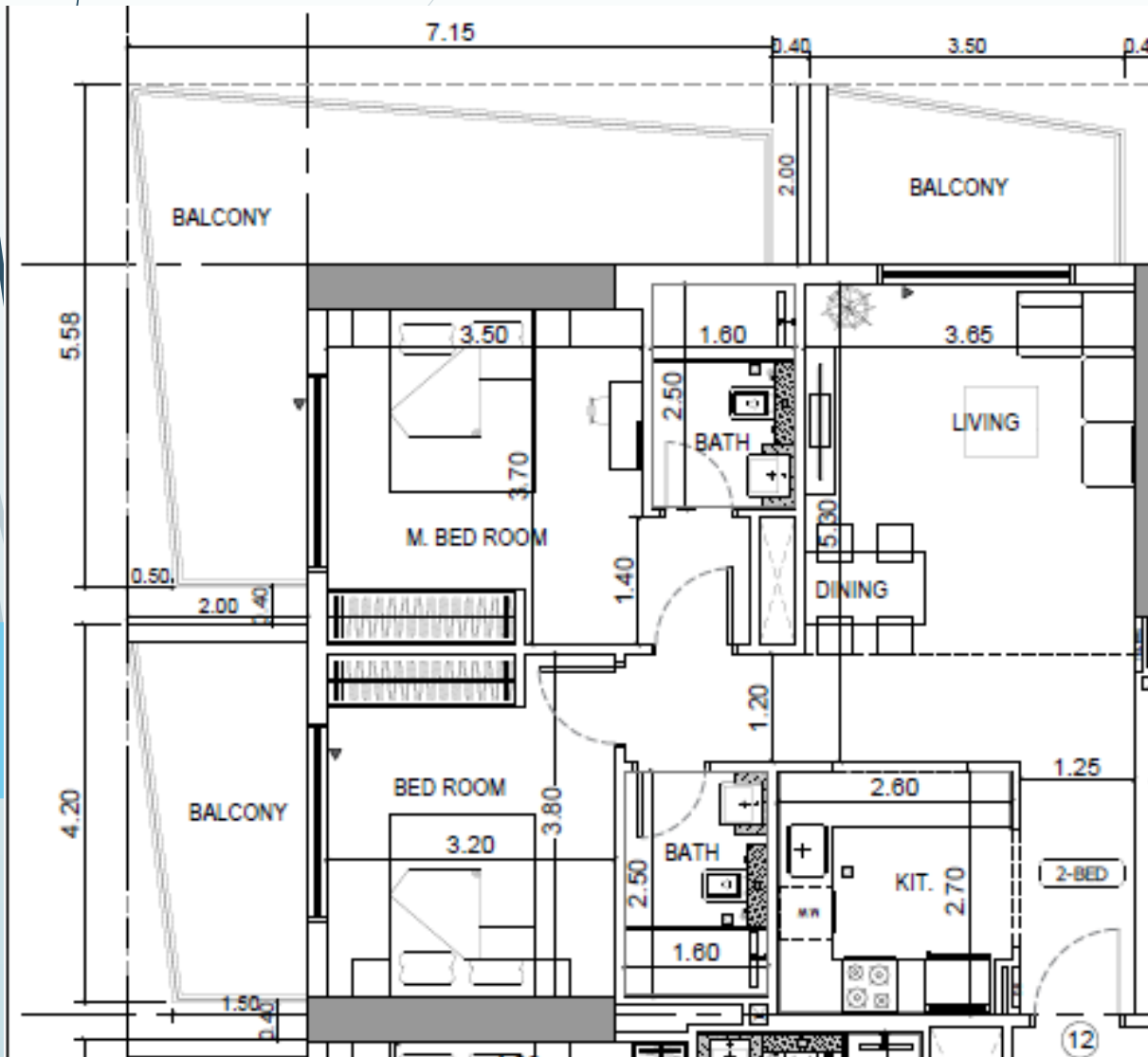
# FLOOR PLANS

## APARTMENT TYPE: 1 BEDROOM



# FLOOR PLANS

## APARTMENT TYPE: 2 BEDROOM





# FLOOR PLANS

## APARTMENT TYPE: 3 BEDROOM

