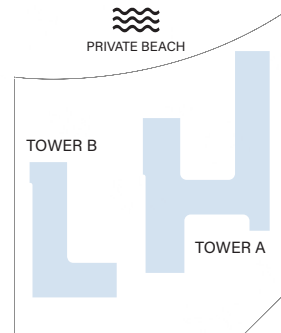




ELLINGTON COVE II

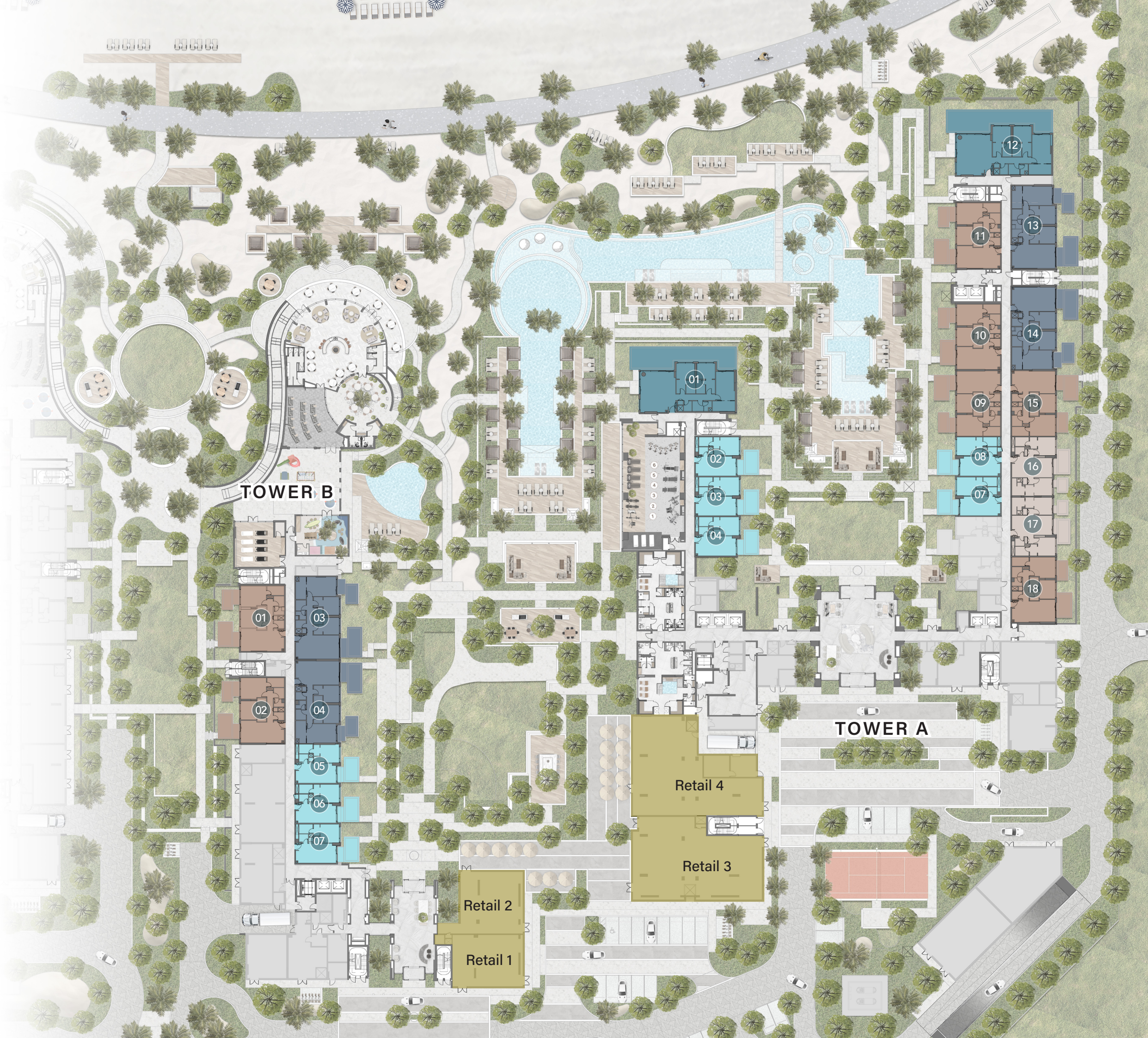
FLOOR PLAN

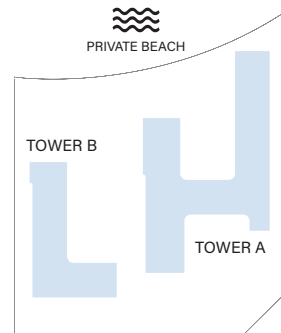


GROUND FLOOR TYPICAL PLAN

- 1 - Bedroom
- 2 - Bedroom
- 2 - Bedroom + S
- 3 - Bedroom
- 3 - Bedroom Deluxe

Disclaimer: All drawings and dimensions of this typical floor plan are approximate. This typical floor level plan and units numbering are provisional. The seller, master developer, and/or any other relevant authorities may amend, change, and/or designate a different number to the units. The final draft of the typical floor plan shall be available on signing the unit sale and purchase agreement.

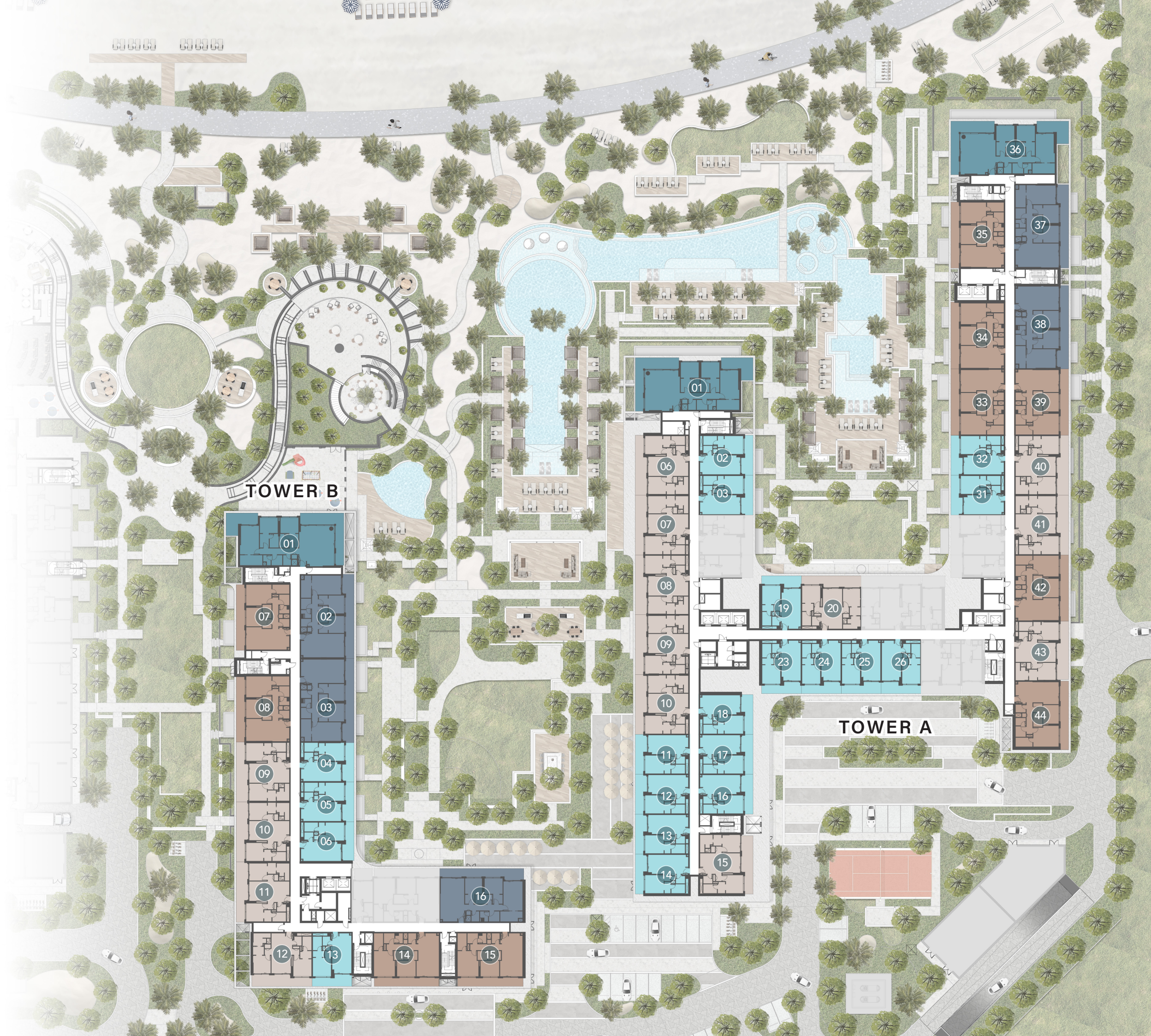


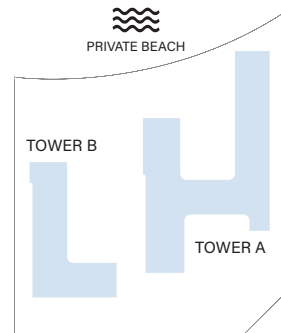


1st FLOOR TYPICAL PLAN

-  1 - Bedroom
-  2 - Bedroom
-  2 - Bedroom + S
-  3 - Bedroom
-  3 - Bedroom
Deluxe

Disclaimer: All drawings and dimensions of this typical floor plan are approximate. This typical floor level plan and units numbering are provisional. The seller, master developer, and/or any other relevant authorities may amend, change, and/or designate a different number to the units. The final draft of the typical floor plan shall be available on signing the unit sale and purchase agreement.

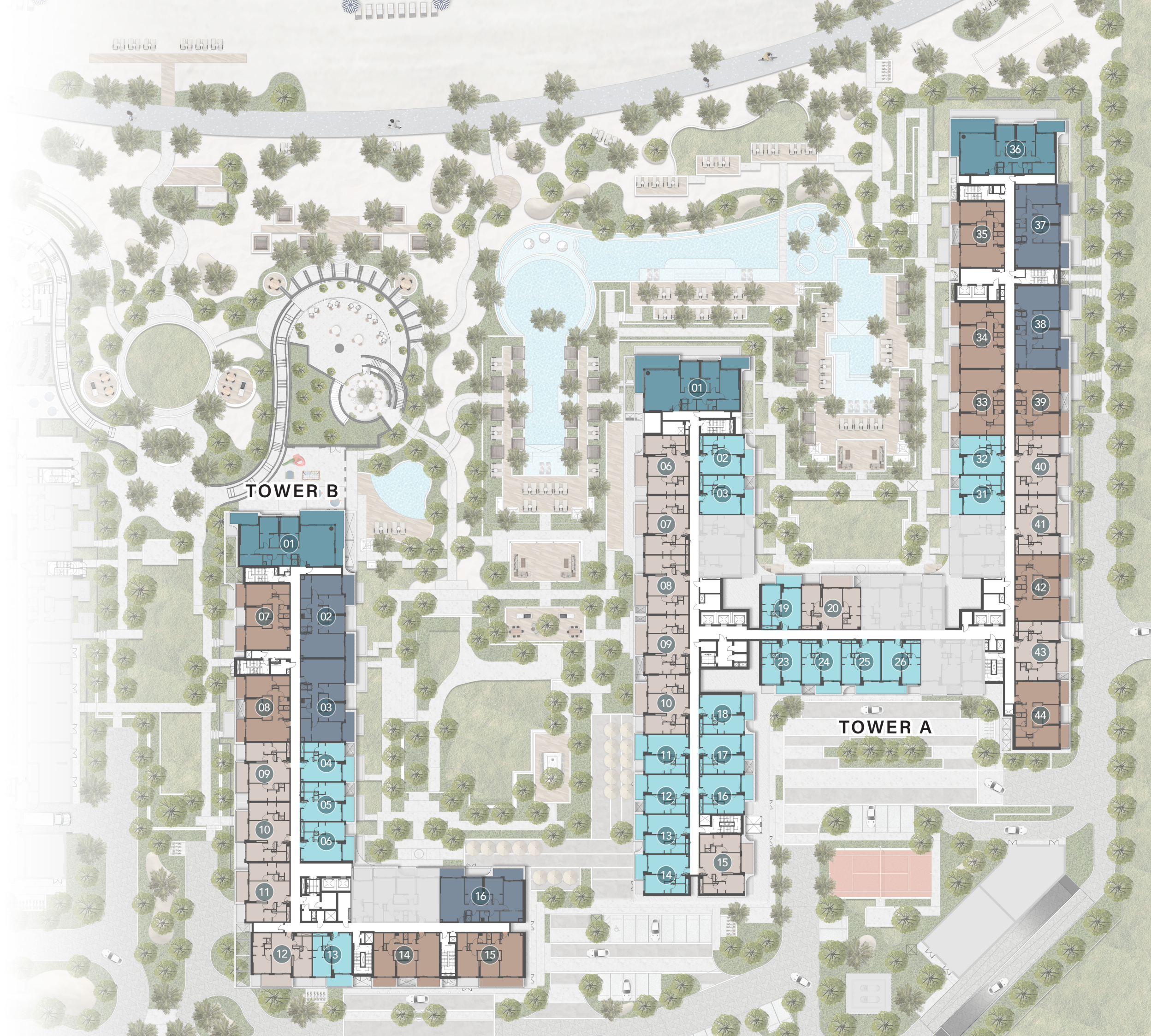


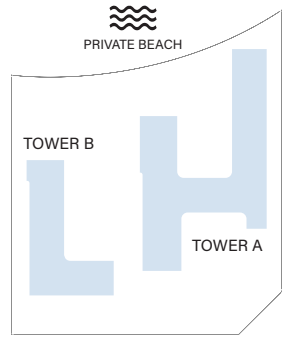


2nd, 4th & 6th FLOOR TYPICAL PLAN

- 1 - Bedroom
- 2 - Bedroom
- 2 - Bedroom + S
- 3 - Bedroom
- 3 - Bedroom Deluxe

Disclaimer: All drawings and dimensions of this typical floor plan are approximate. This typical floor level plan and units numbering are provisional. The seller, master developer, and/or any other relevant authorities may amend, change, and/or designate a different number to the units. The final draft of the typical floor plan shall be available on signing the unit sale and purchase agreement.

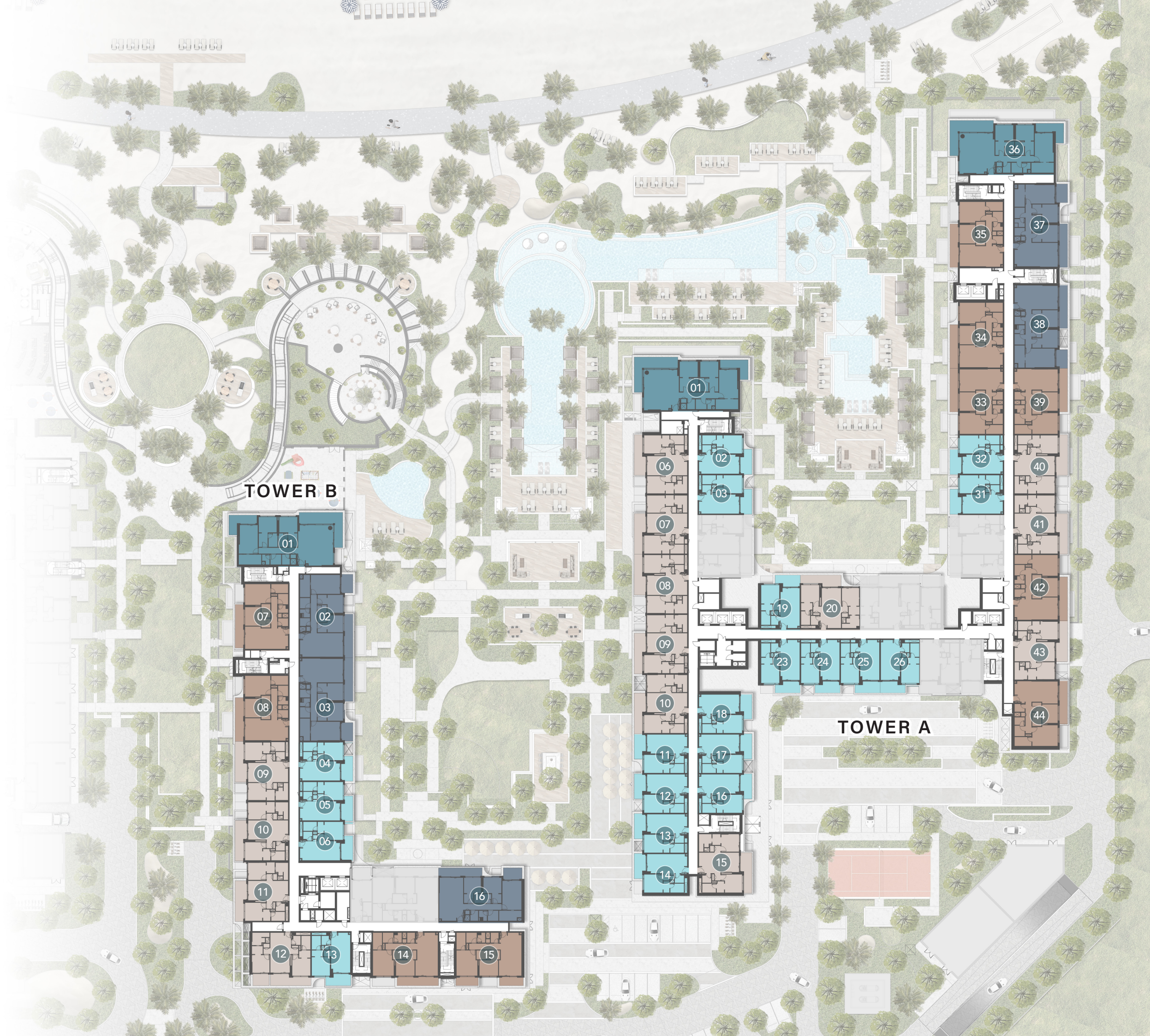
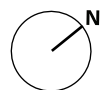


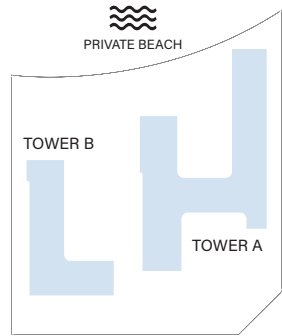


3th & 5th FLOOR TYPICAL PLAN

-  1 - Bedroom
-  2 - Bedroom
-  2 - Bedroom + S
-  3 - Bedroom
-  3 - Bedroom
Deluxe

Disclaimer: All drawings and dimensions of this typical floor plan are approximate. This typical floor level plan and units numbering are provisional. The seller, master developer, and/or any other relevant authorities may amend, change, and/or designate a different number to the units. The final draft of the typical floor plan shall be available on signing the unit sale and purchase agreement.

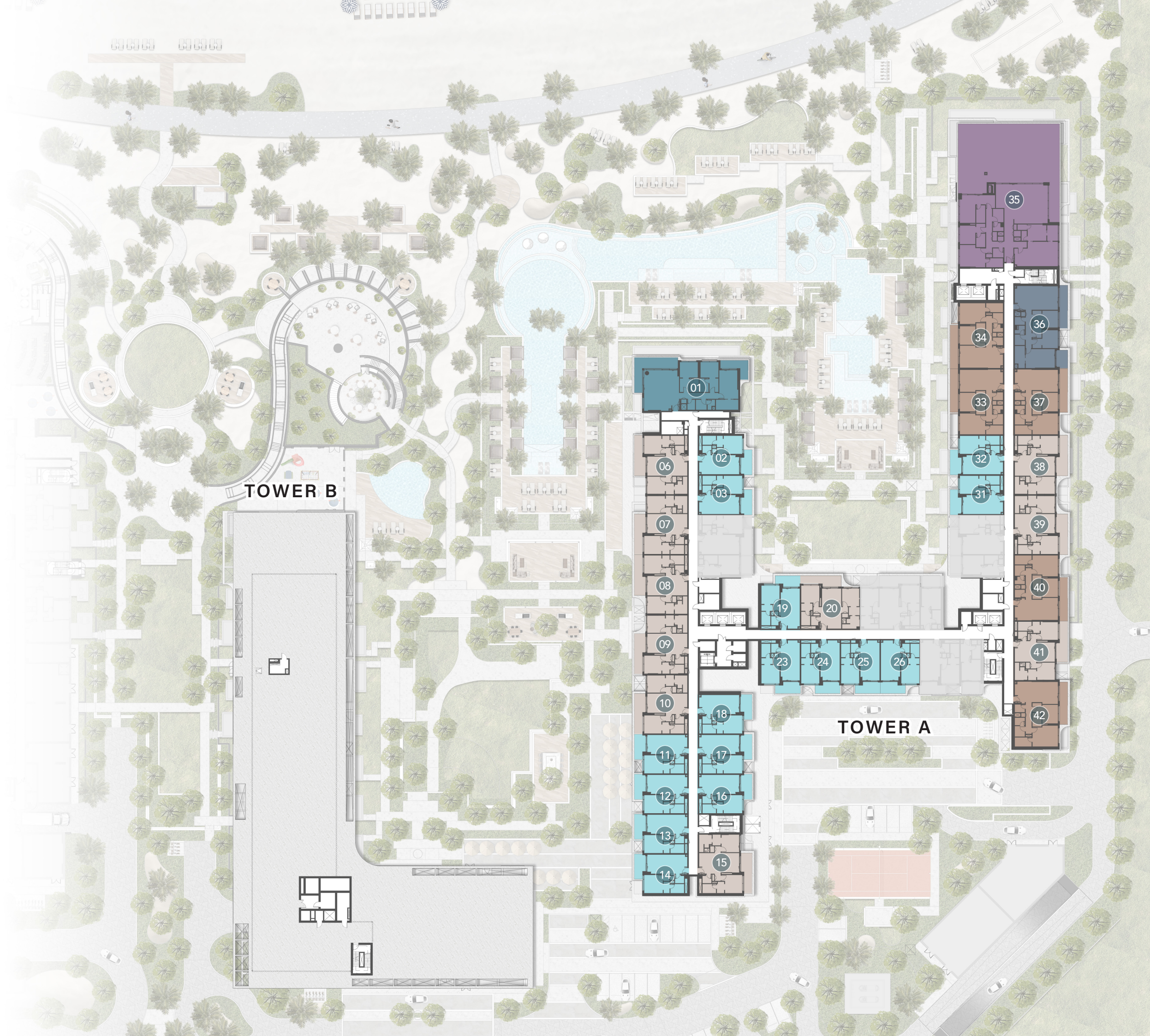


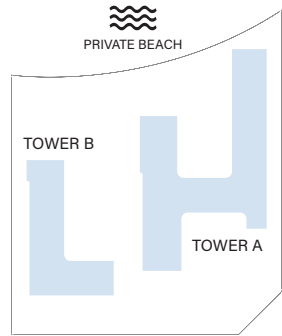


7th FLOOR TYPICAL PLAN

-  1 - Bedroom
-  2 - Bedroom
-  2 - Bedroom + S
-  3 - Bedroom
-  3 - Bedroom
Deluxe
-  4 - Bedroom
Penthouse

Disclaimer: All drawings and dimensions of this typical floor plan are approximate. This typical floor level plan and units numbering are provisional. The seller, master developer, and/or any other relevant authorities may amend, change, and/or designate a different number to the units. The final draft of the typical floor plan shall be available on signing the unit sale and purchase agreement.

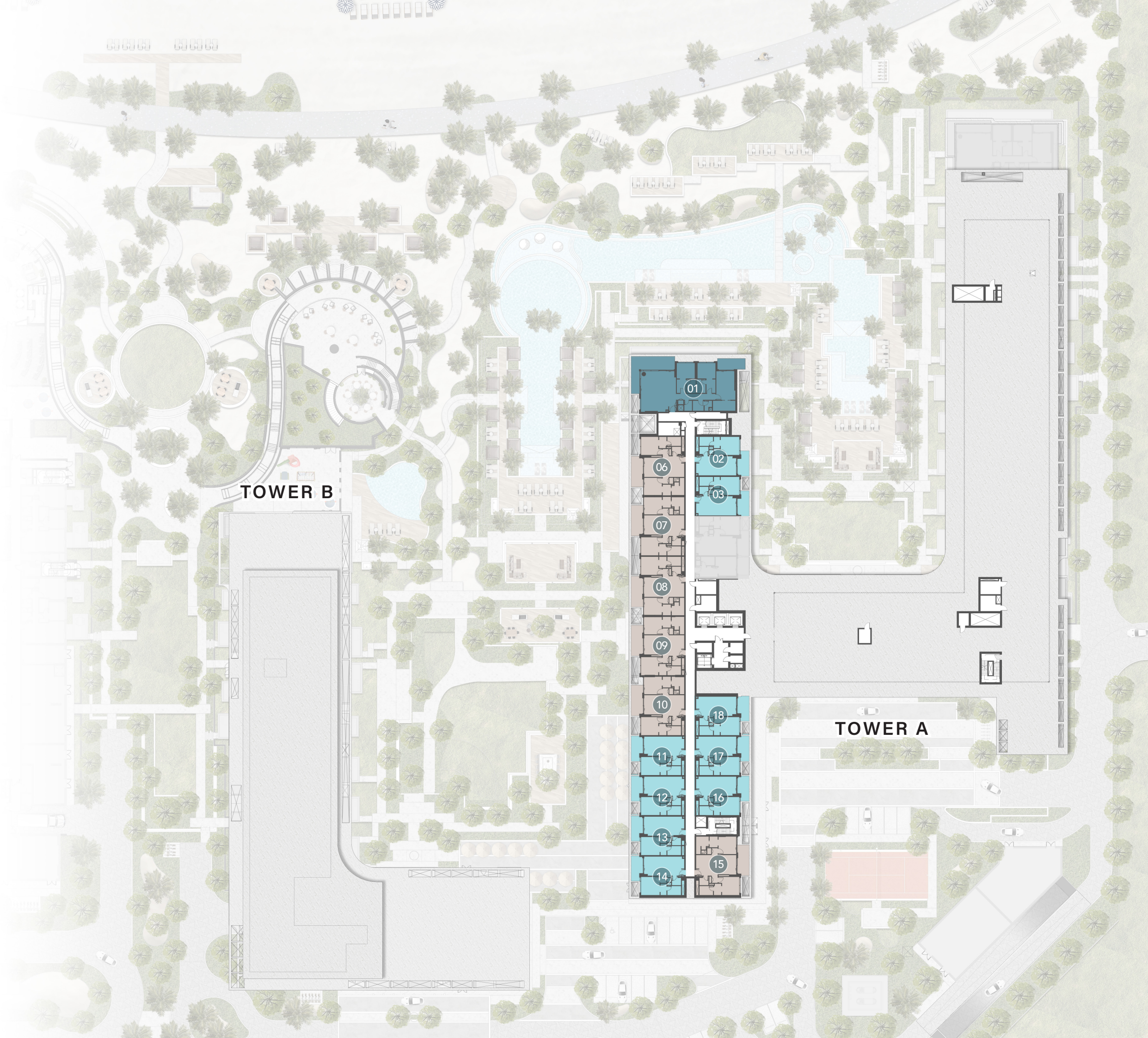


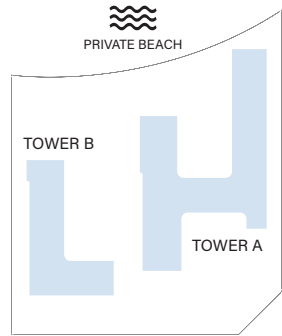


8th FLOOR TYPICAL PLAN

- 1 - Bedroom
- 2 - Bedroom
- 3 - Bedroom
Deluxe

Disclaimer: All drawings and dimensions of this typical floor plan are approximate. This typical floor level plan and units numbering are provisional. The seller, master developer, and/or any other relevant authorities may amend, change, and/or designate a different number to the units. The final draft of the typical floor plan shall be available on signing the unit sale and purchase agreement.

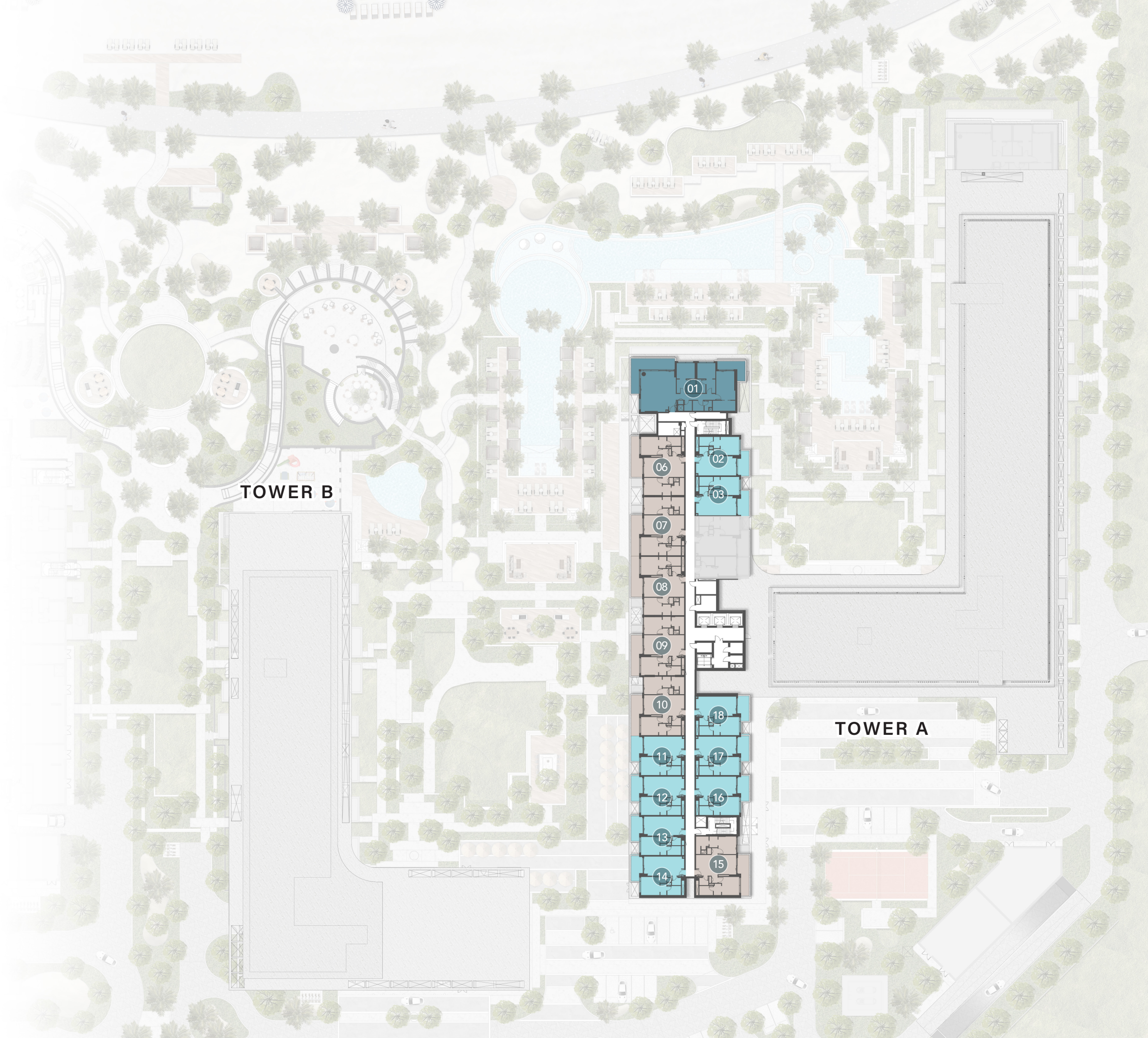




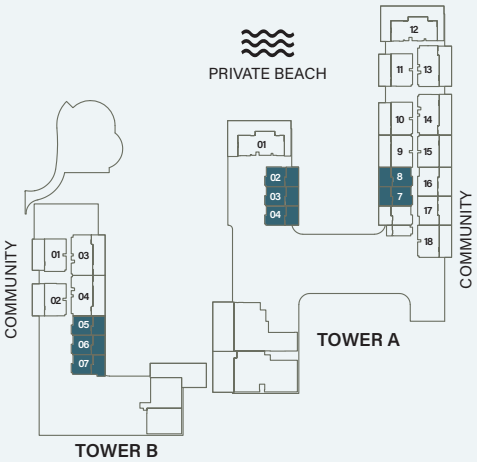
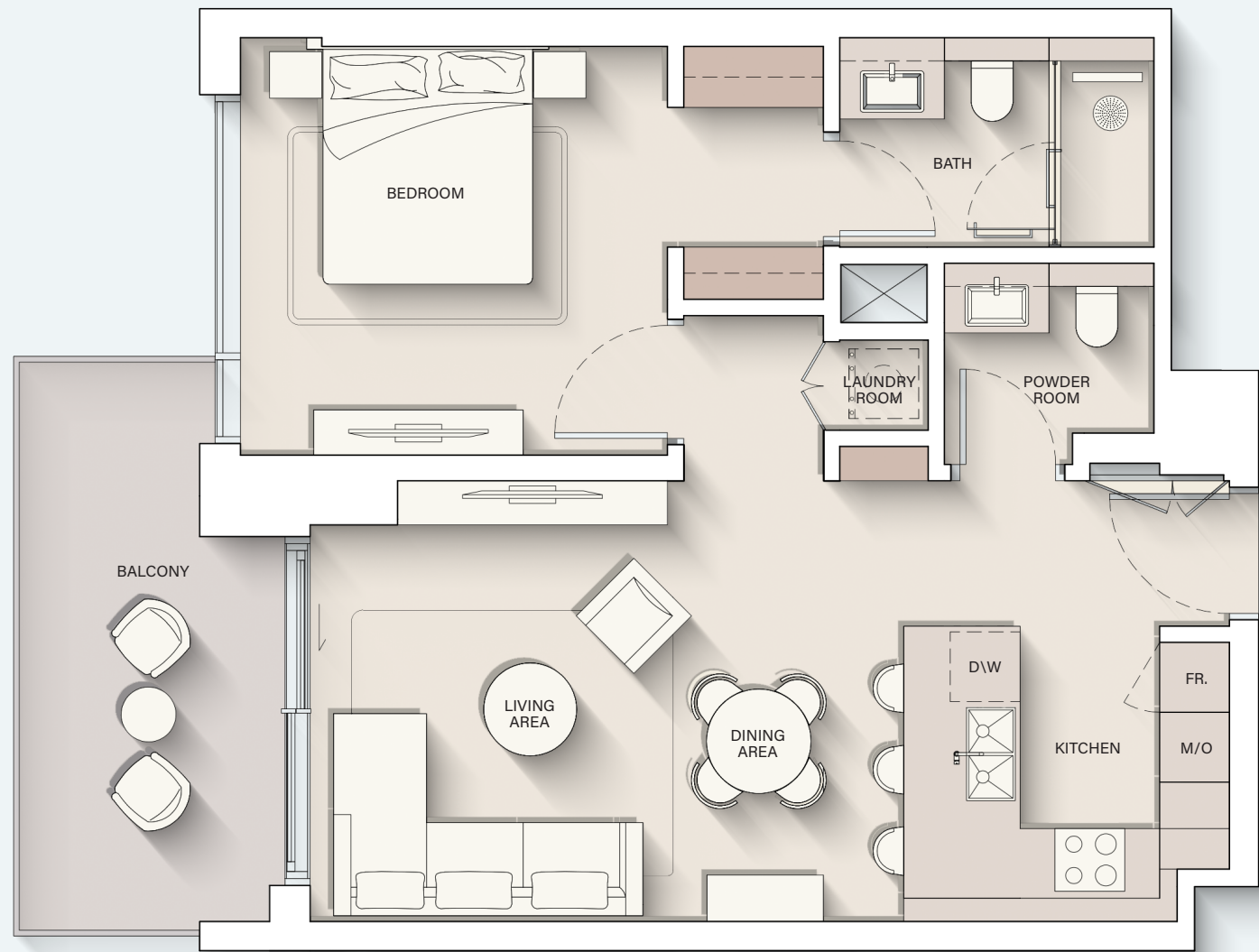
9th FLOOR TYPICAL PLAN

- 1 - Bedroom
- 2 - Bedroom
- 3 - Bedroom
Deluxe

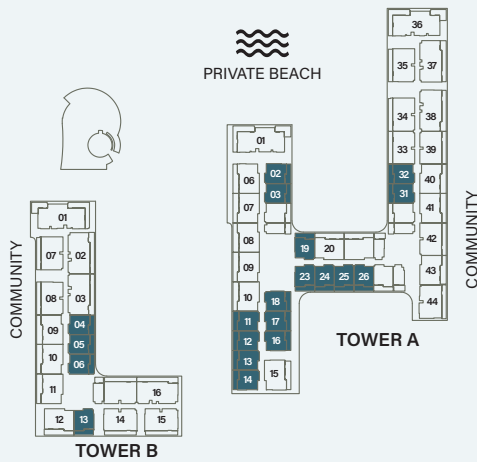
Disclaimer: All drawings and dimensions of this typical floor plan are approximate. This typical floor level plan and units numbering are provisional. The seller, master developer, and/or any other relevant authorities may amend, change, and/or designate a different number to the units. The final draft of the typical floor plan shall be available on signing the unit sale and purchase agreement.



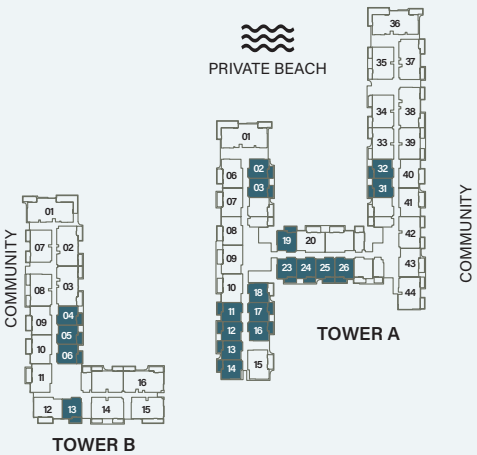
1 - BEDROOM



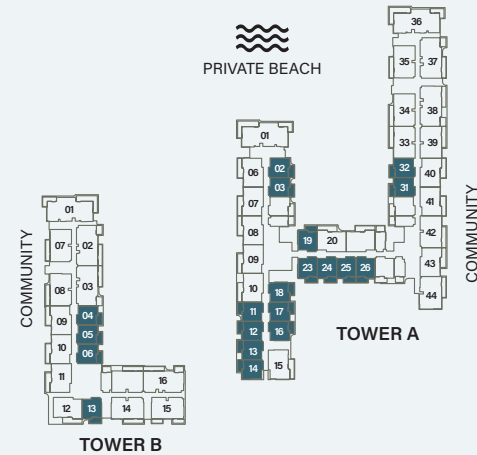
Ground Floor



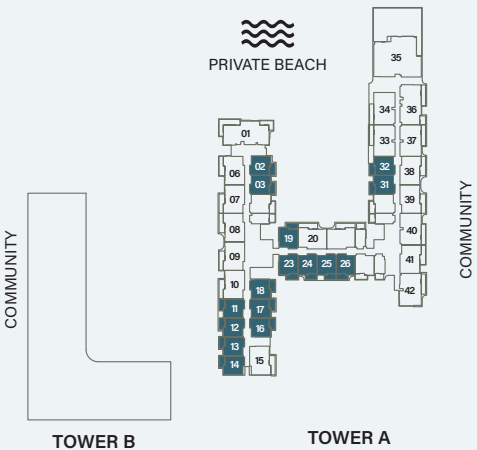
1st Floor



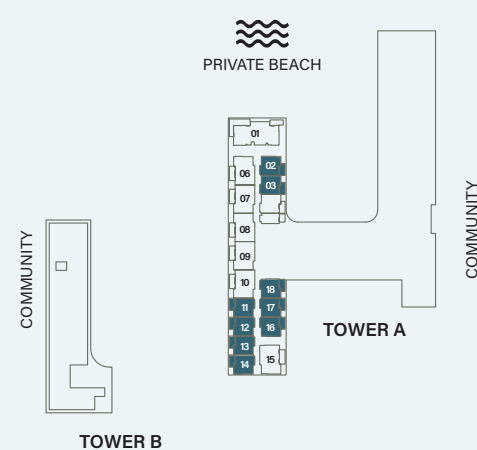
2nd, 4th & 6th Floor



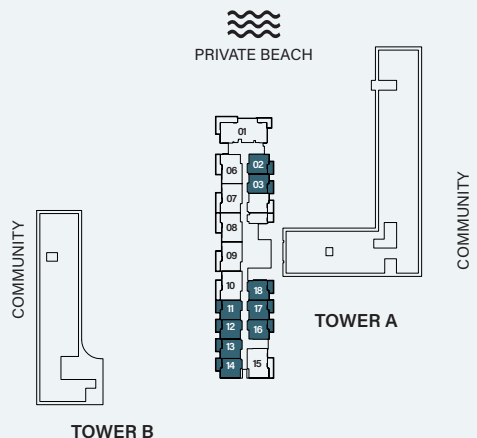
3rd & 5th Floor



7th Floor



8th Floor

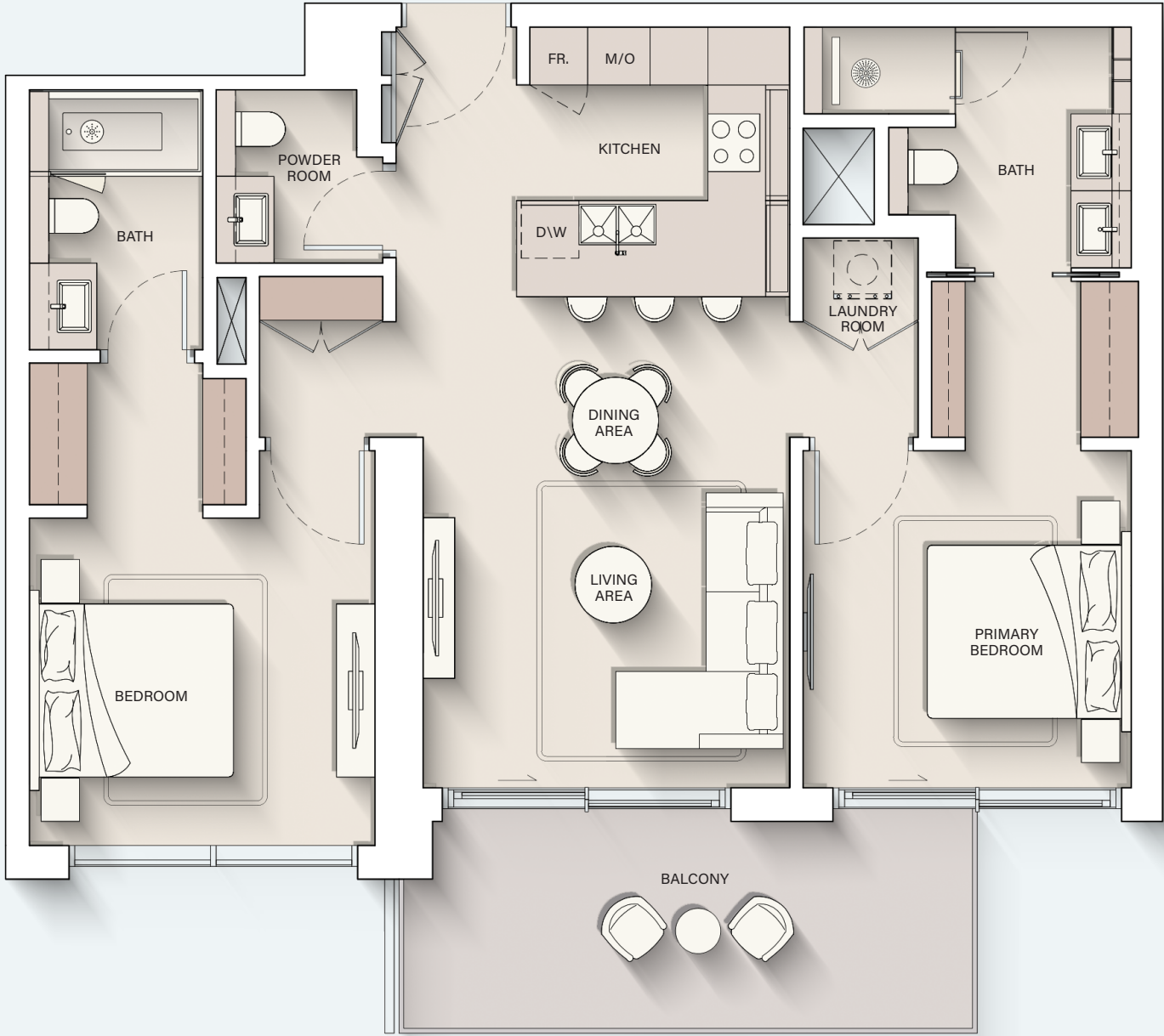


9th Floor

Internal Living Area : **692.44 sq. ft** Outdoor Living Area : **123.68 sq. ft** Total Living Area : **816.12 sq. ft**



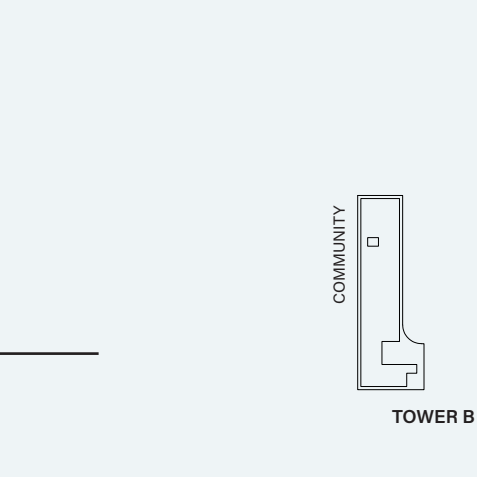
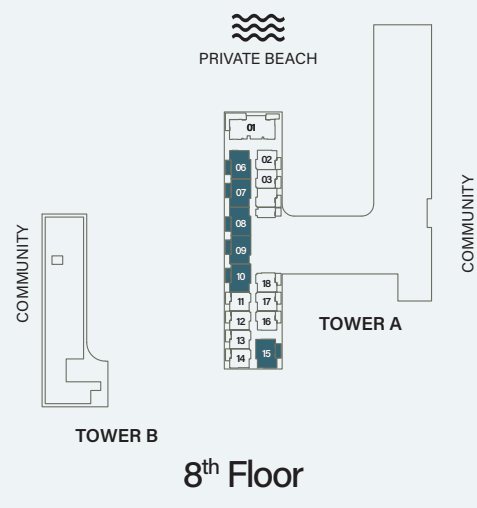
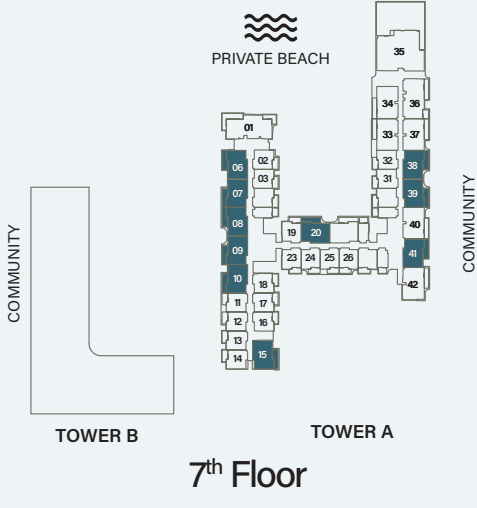
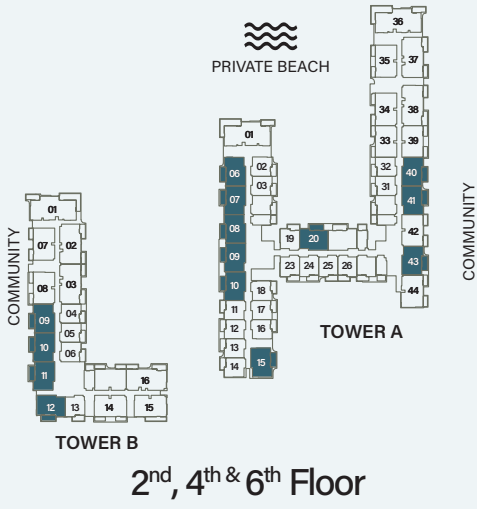
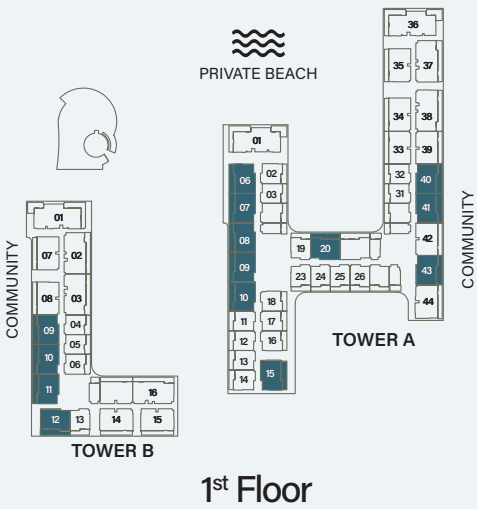
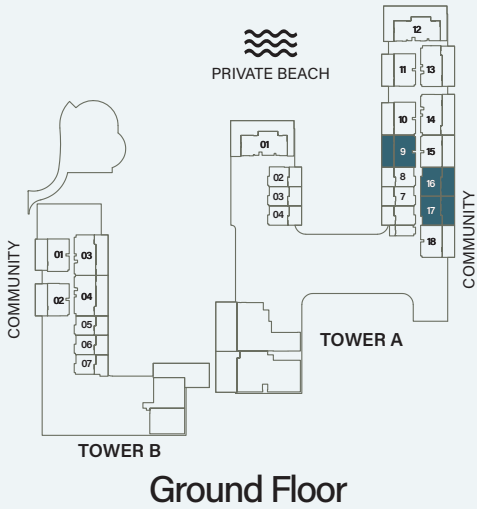
2 - BEDROOM



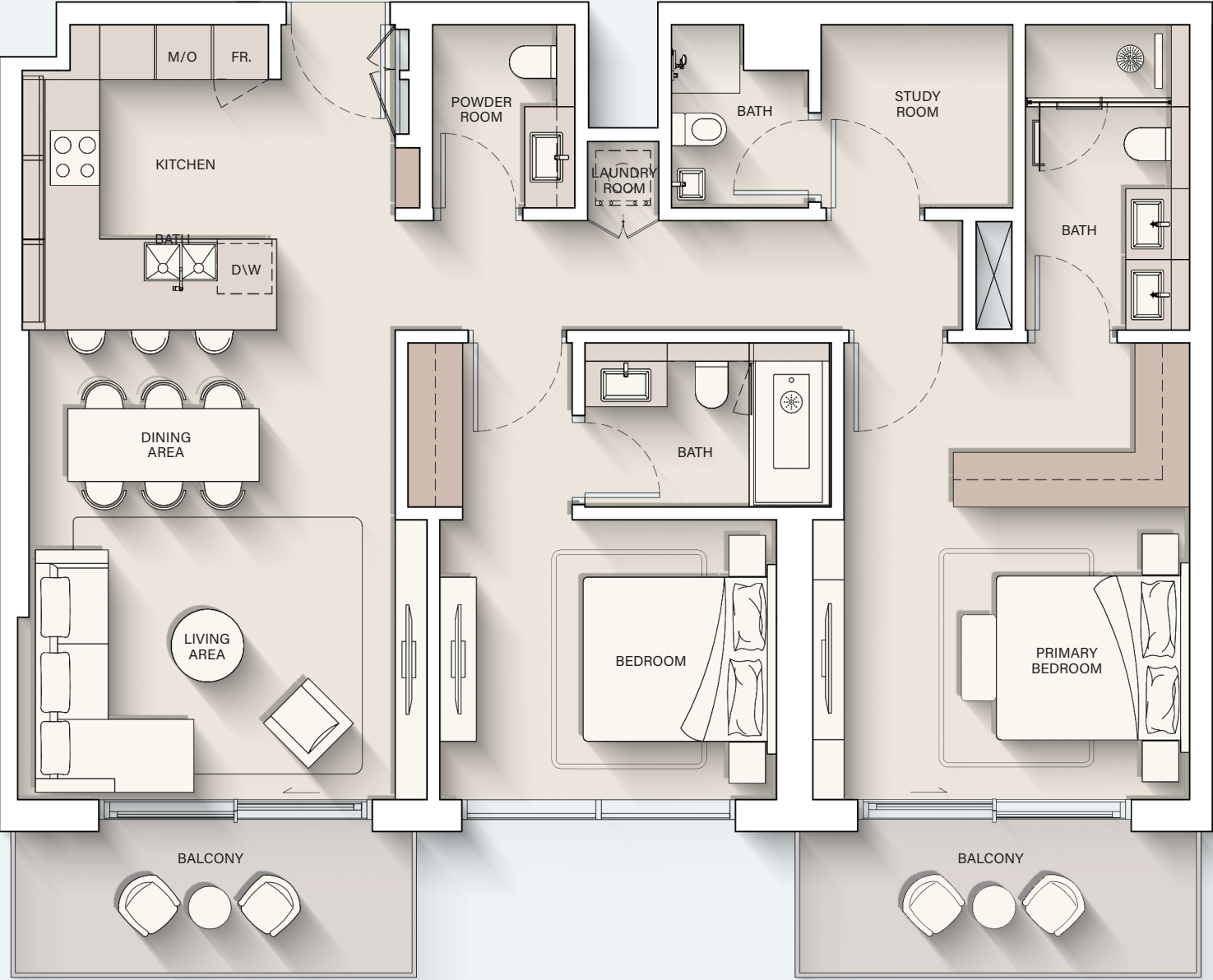
Internal Living Area : 1017.94 sq. ft

Outdoor Living Area : 154.35 sq. ft

Total Living Area : 1172.30 sq. ft



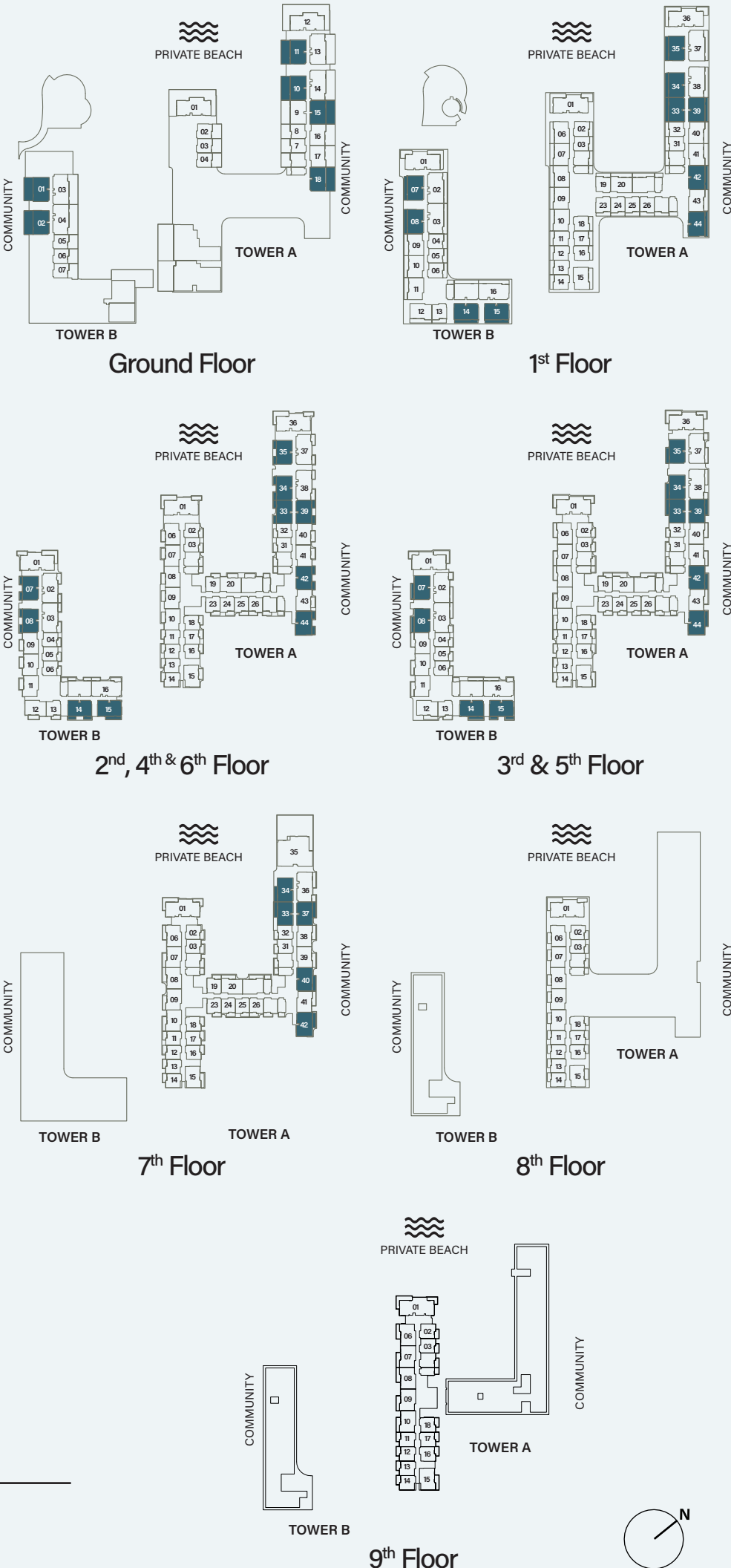
2 - BEDROOM + S



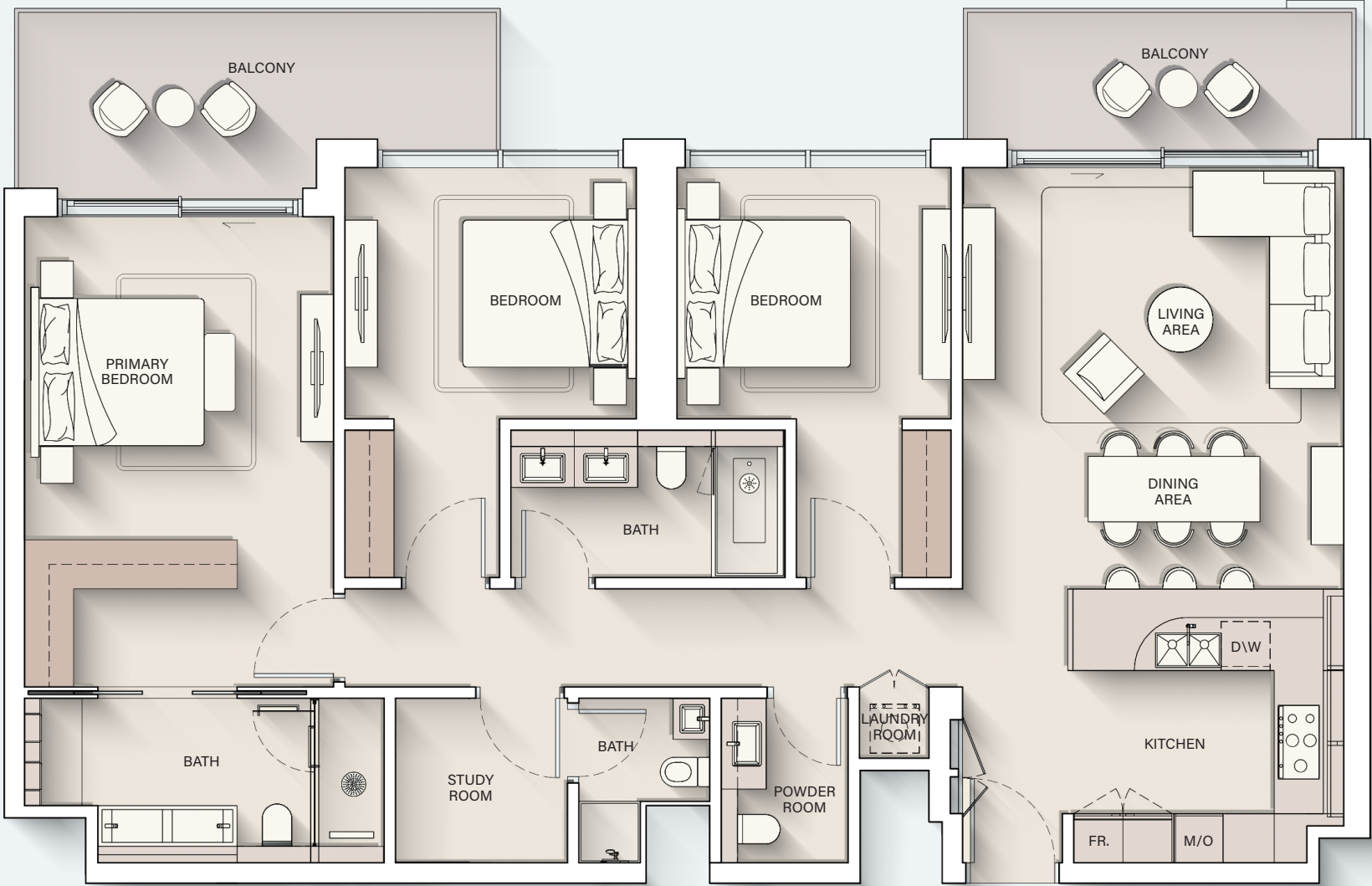
Internal Living Area : 1231.07 sq. ft

Outdoor Living Area : 168.13 sq. ft

Total Living Area : 1399.20 sq. ft



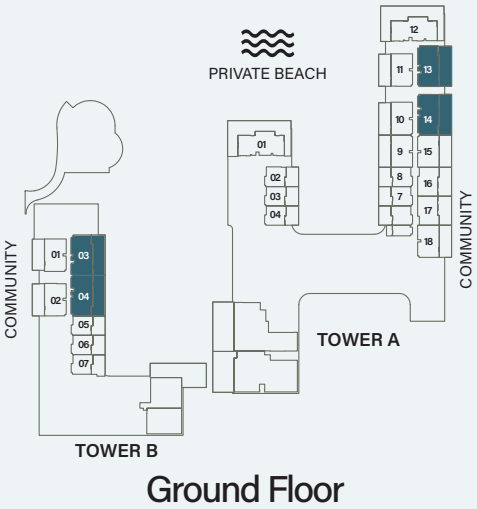
3 - BEDROOM



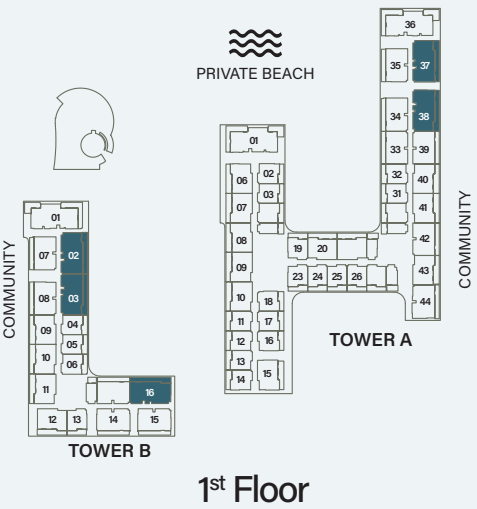
Internal Living Area : 1500.17 sq. ft

Outdoor Living Area : 230.46 sq. ft

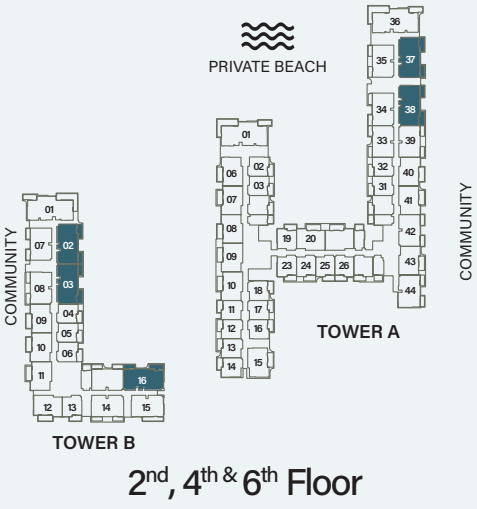
Total Living Area : 1730.62 sq. ft



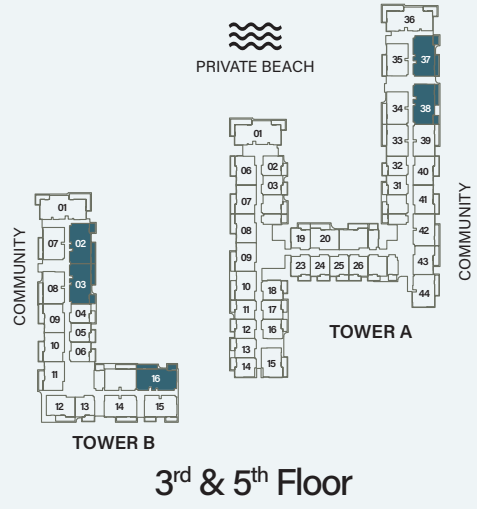
Ground Floor



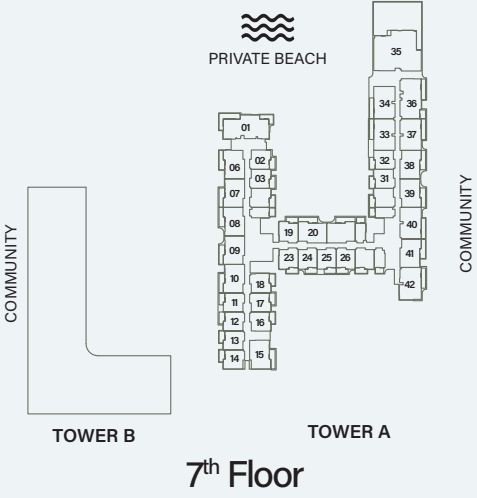
1st Floor



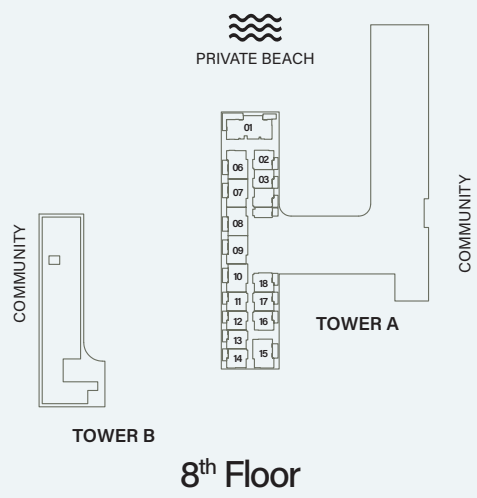
2nd, 4th & 6th Floor



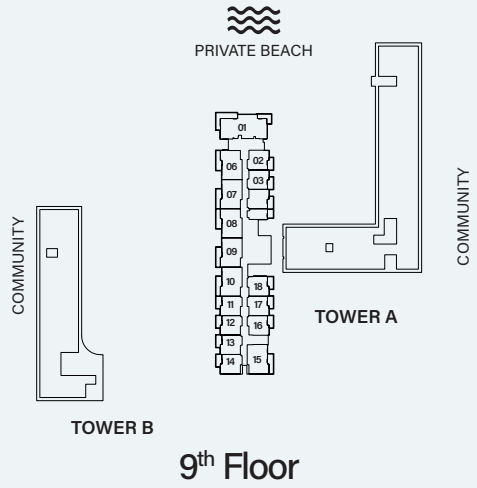
3rd & 5th Floor



7th Floor



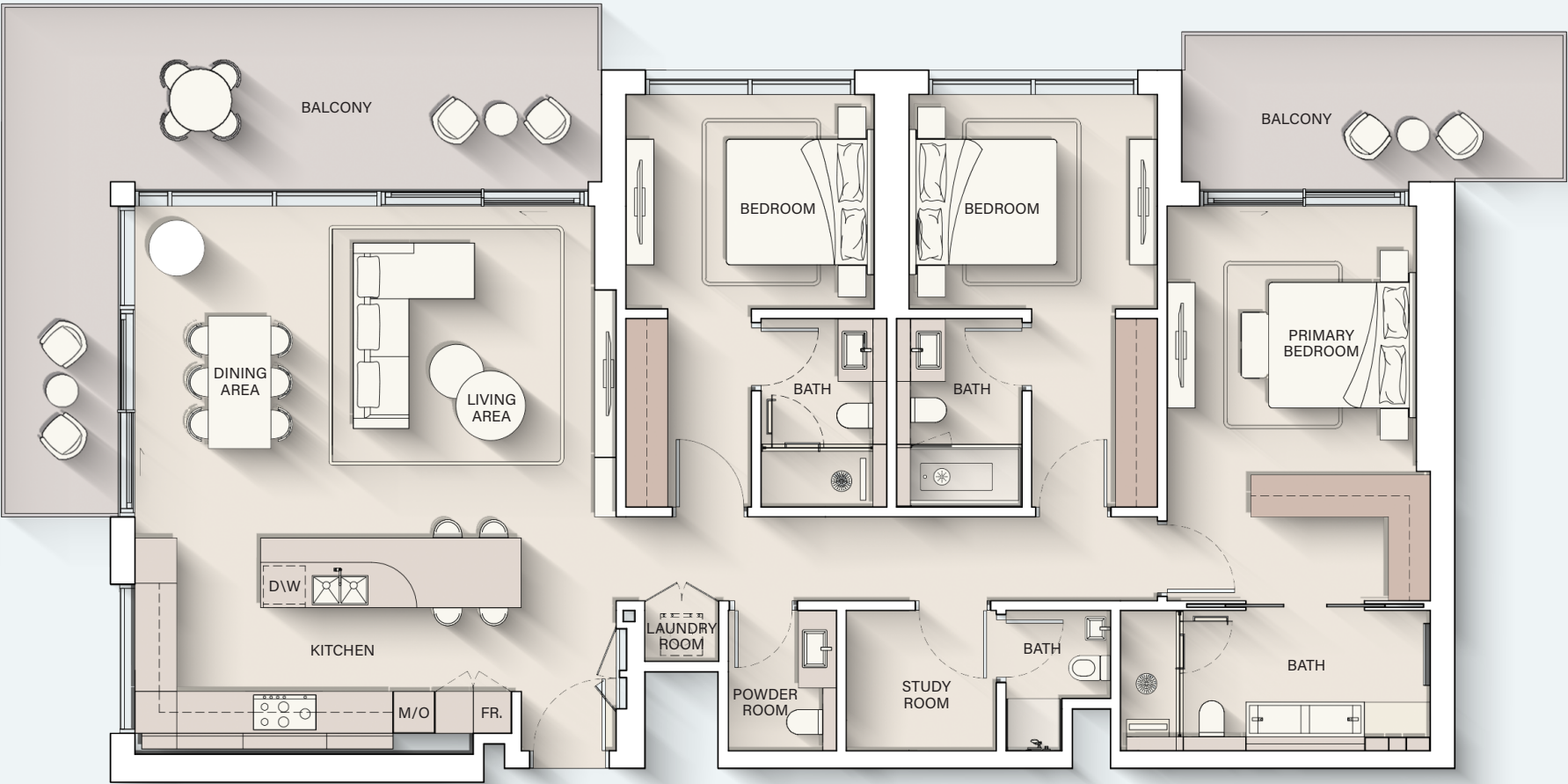
8th Floor



9th Floor



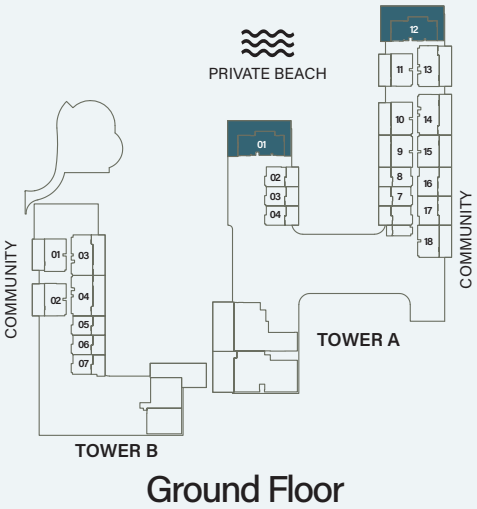
3 - BEDROOM DELUXE



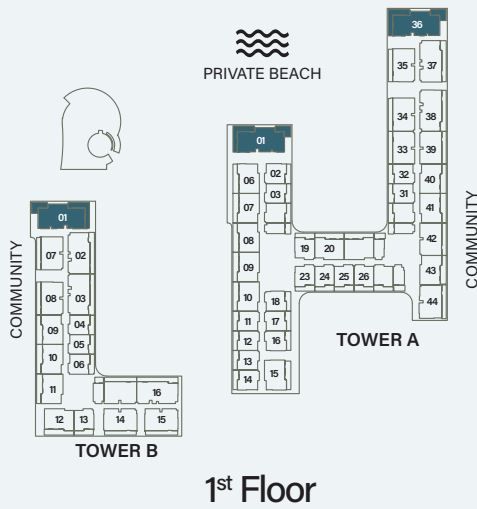
Internal Living Area : 1771.85 sq. ft

Outdoor Living Area : 477.06 sq. ft

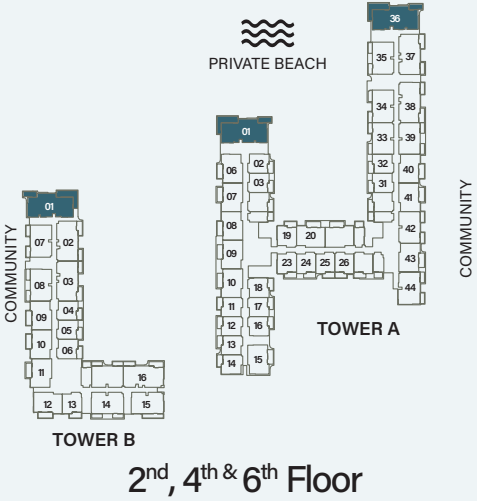
Total Living Area : 2248.90 sq. ft



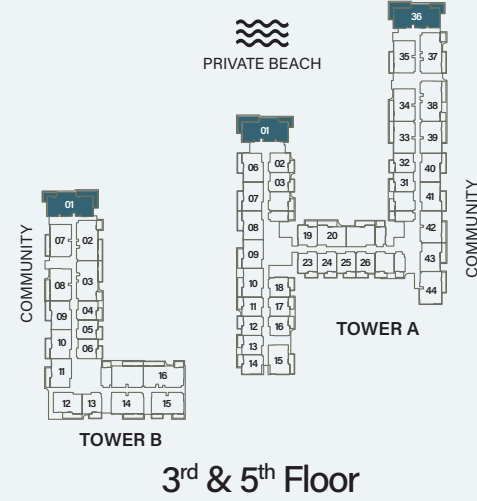
Ground Floor



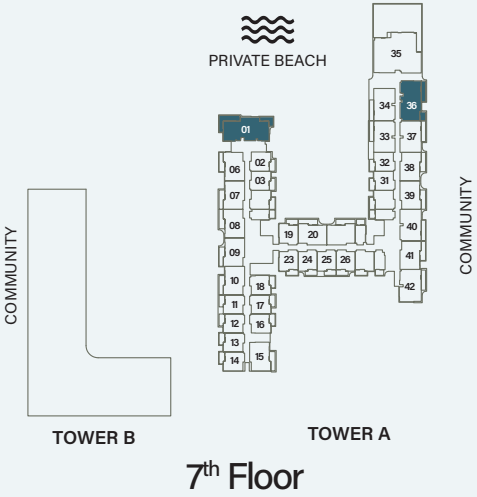
1st Floor



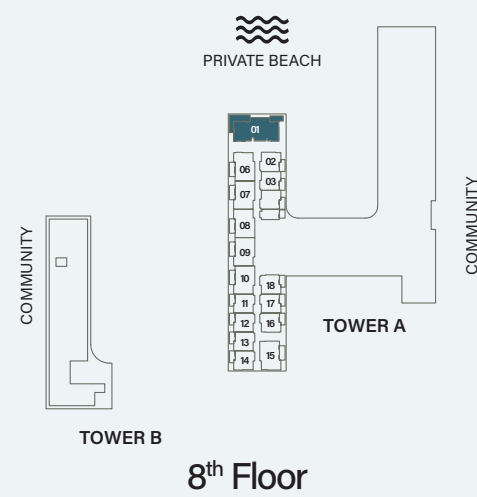
2nd, 4th & 6th Floor



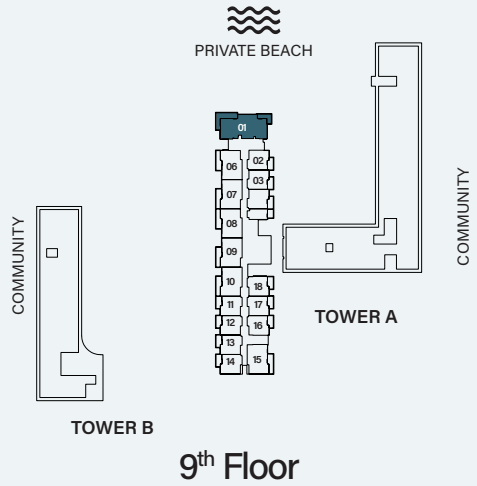
3rd & 5th Floor



7th Floor



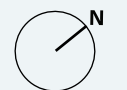
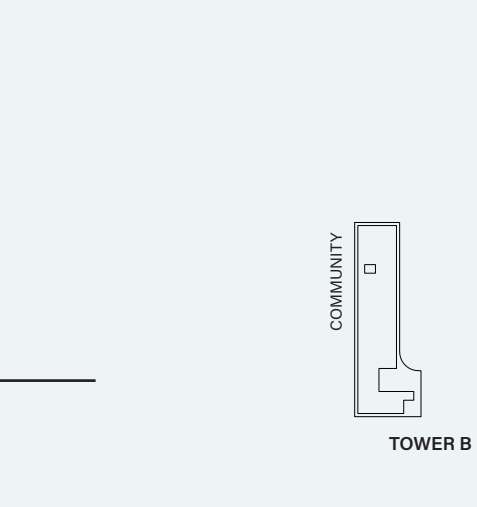
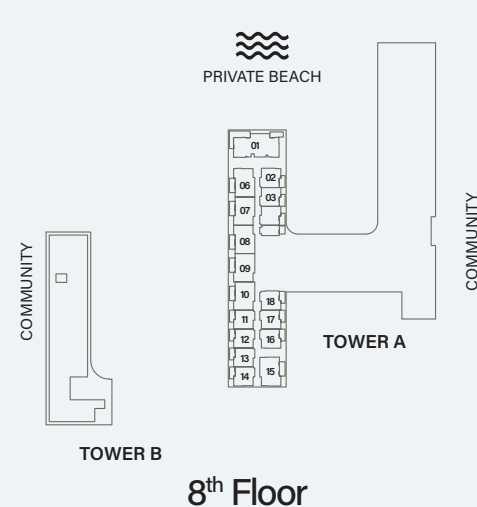
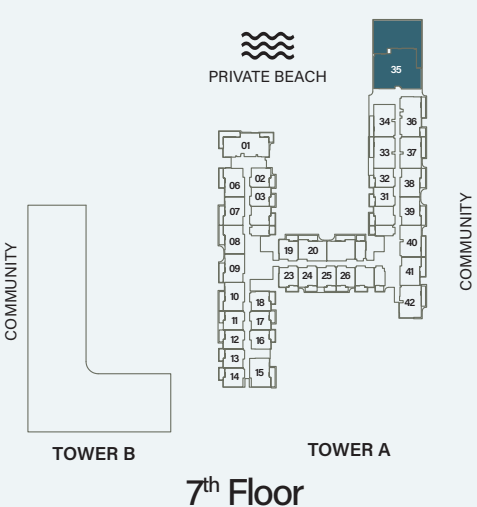
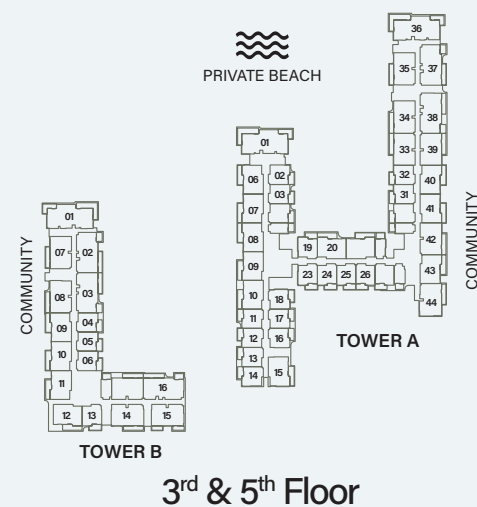
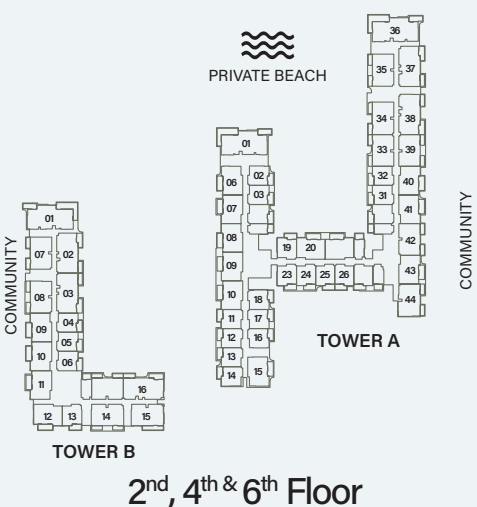
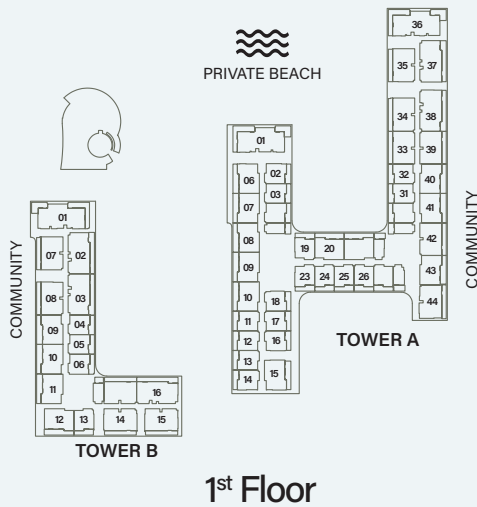
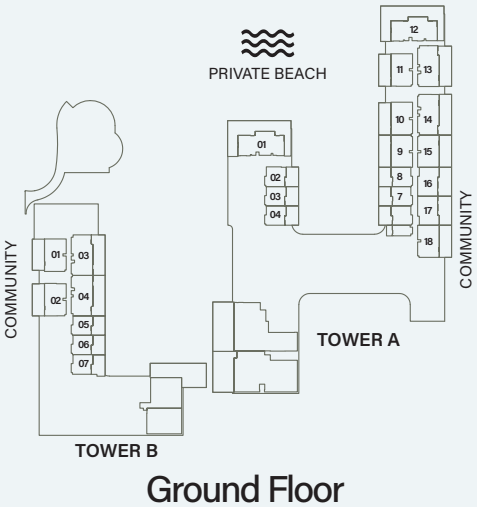
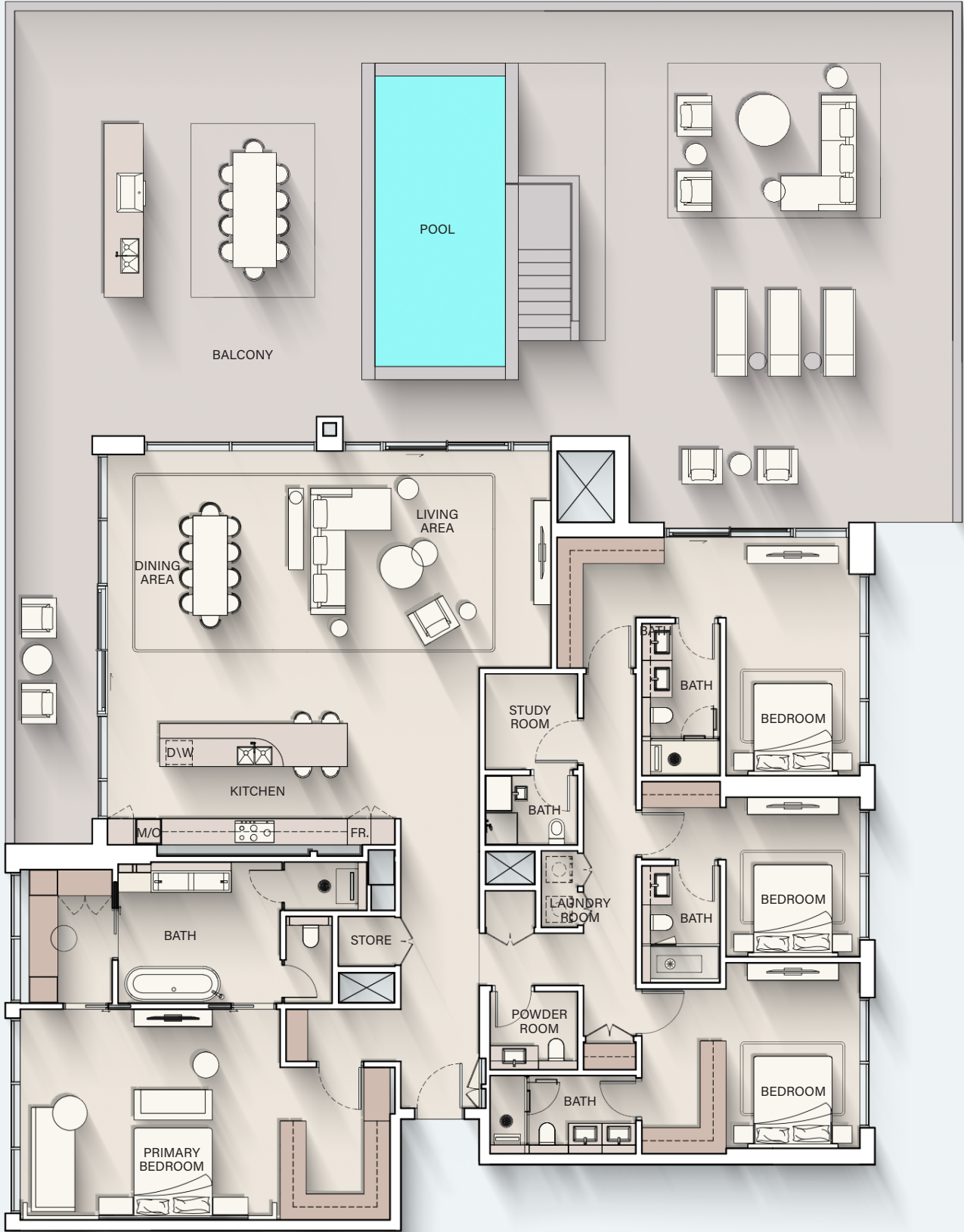
8th Floor



9th Floor

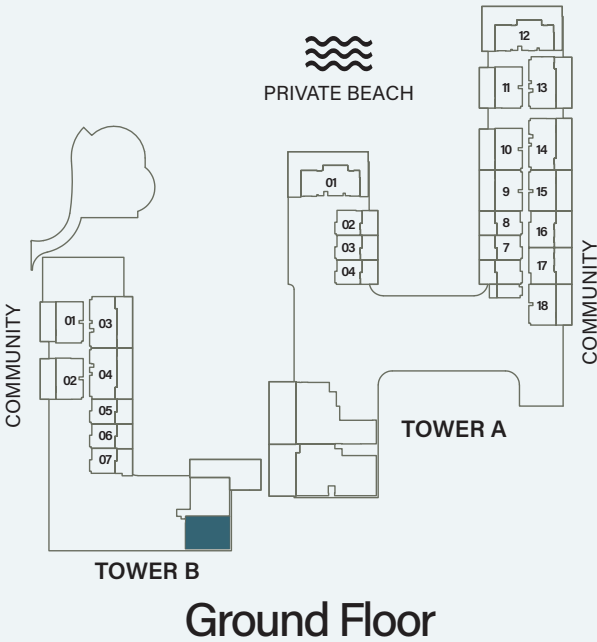
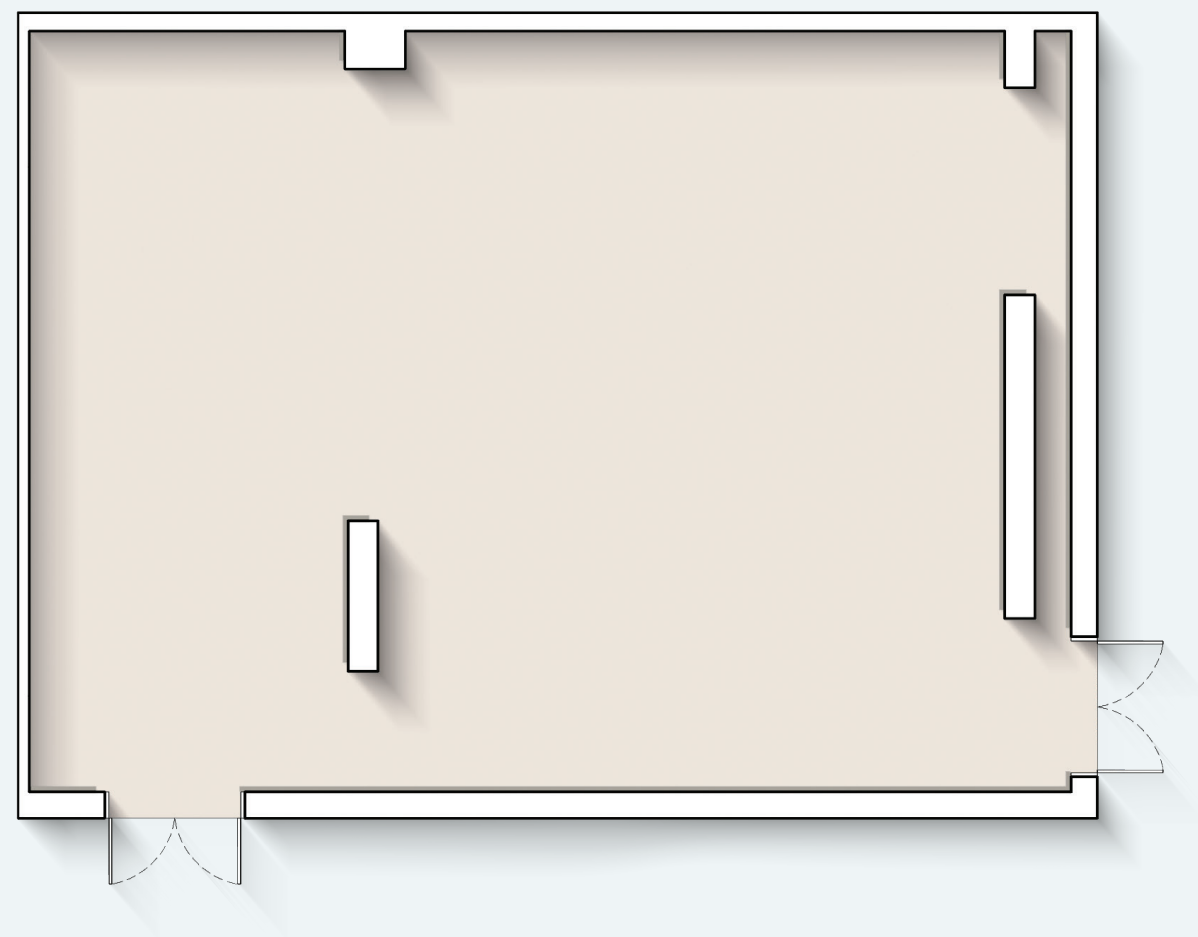


4 - BEDROOM PENTHOUSE



Internal Living Area : 3222.50 sq. ft Outdoor Living Area : 2663.64 sq. ft Total Living Area : 5886.14 sq. ft

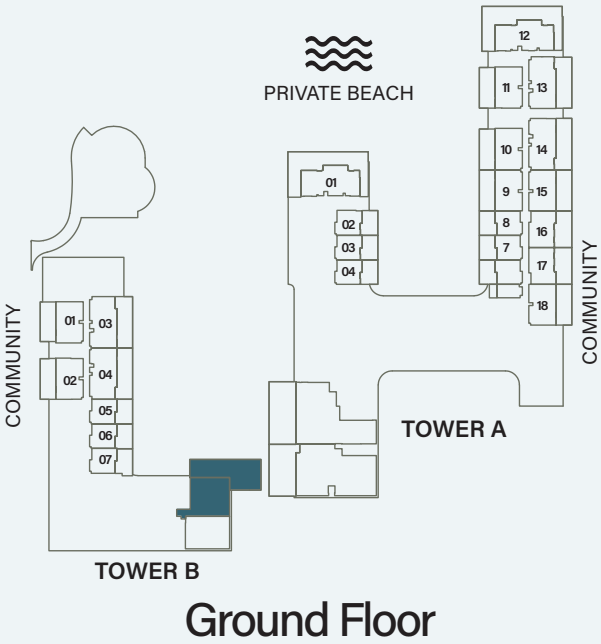
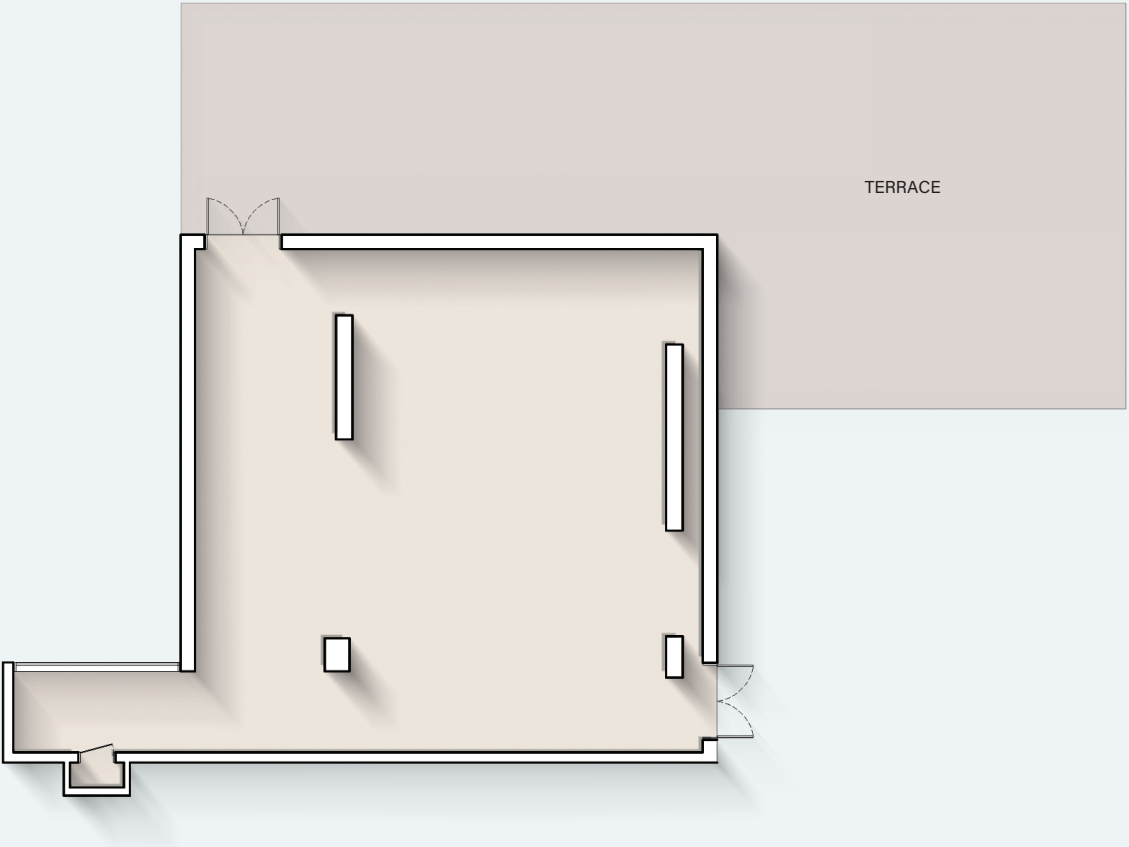
RETAIL - 1



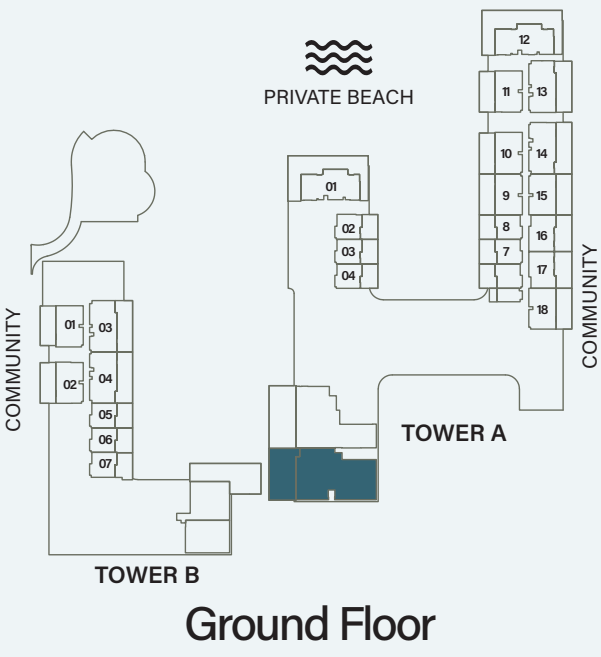
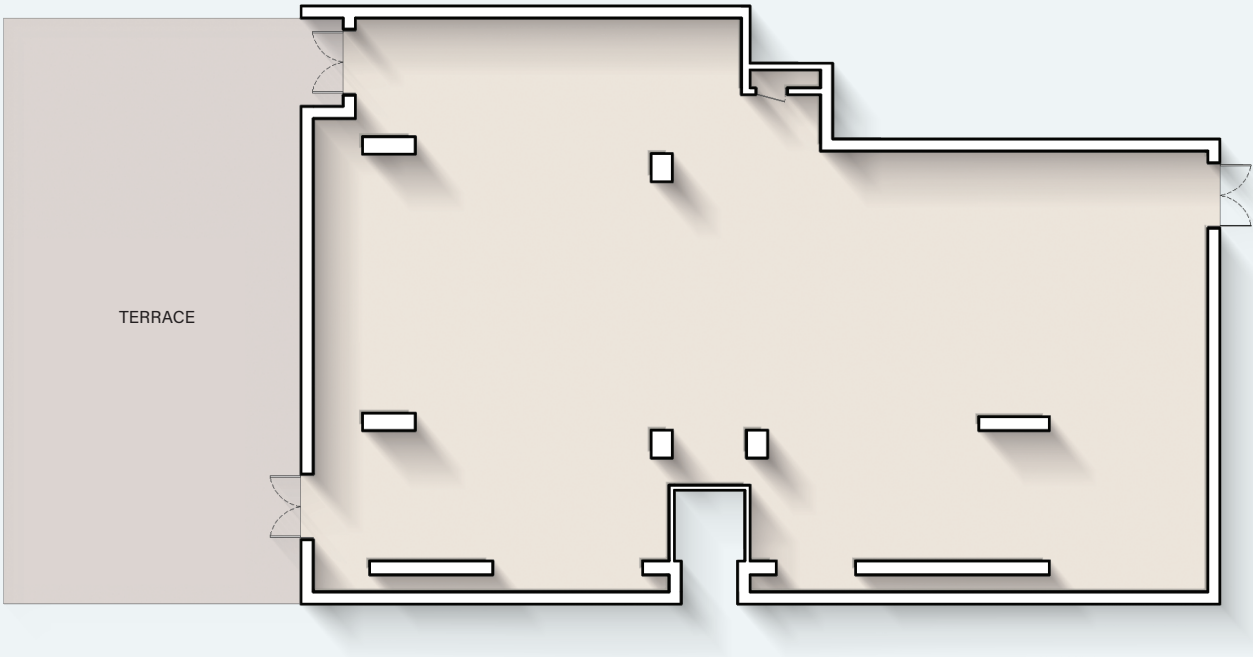
Internal Living Area : **1585.20 sq. ft**



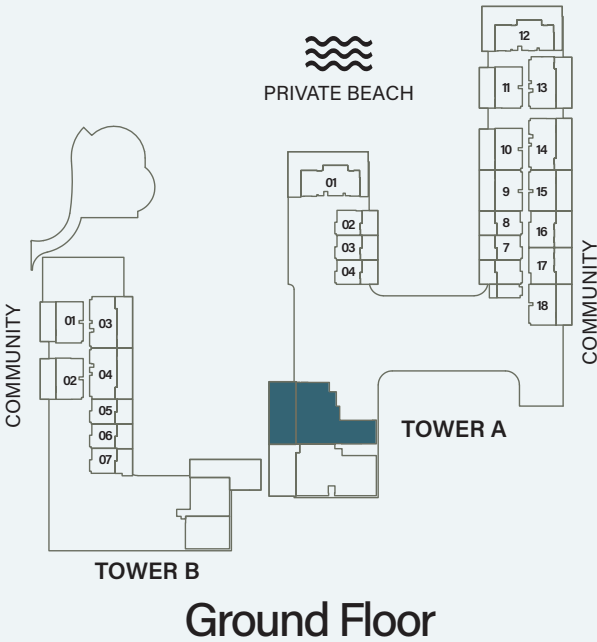
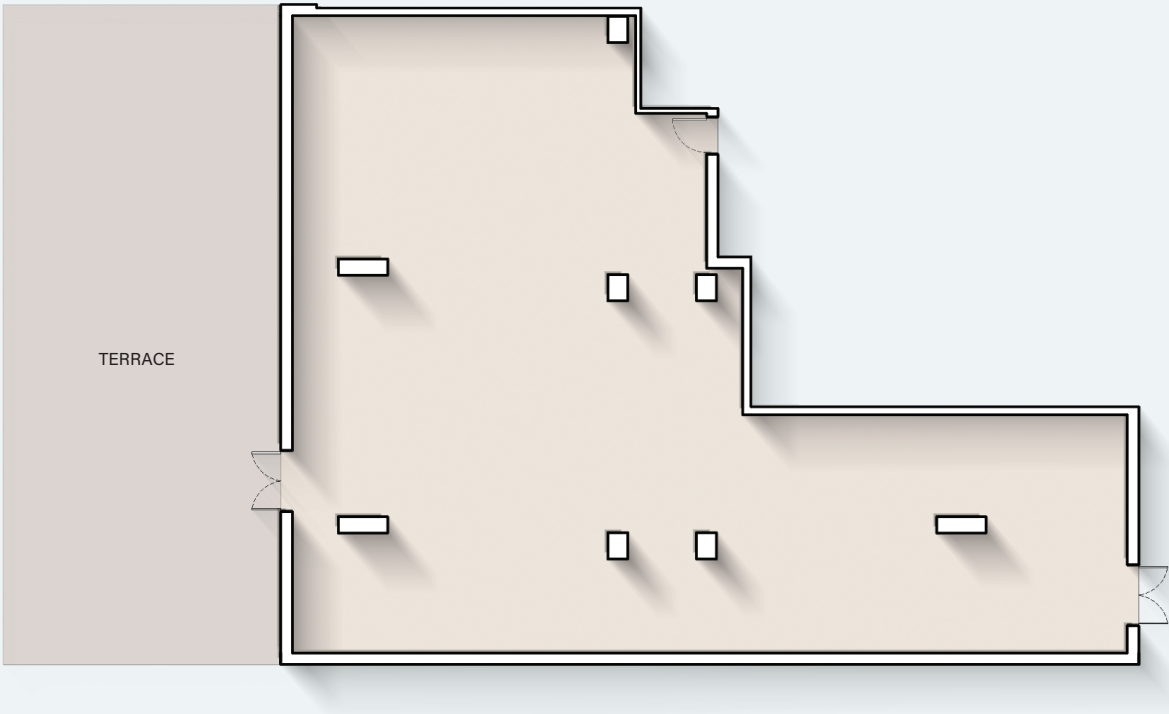
RETAIL - 2



RETAIL - 3



RETAIL - 4





ELLINGTON

PROPERTIES

800 8288
info@ellingtongroup.com

ELLINGTONPROPERTIES.AE

The renderings and visualizations contained in this brochure are provided for illustrative and marketing purposes. While the information provided is believed to be accurate and reliable at the time of printing, only the information contained in the final Sales and Purchase Agreement will have any legal effect.