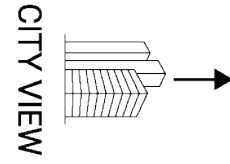
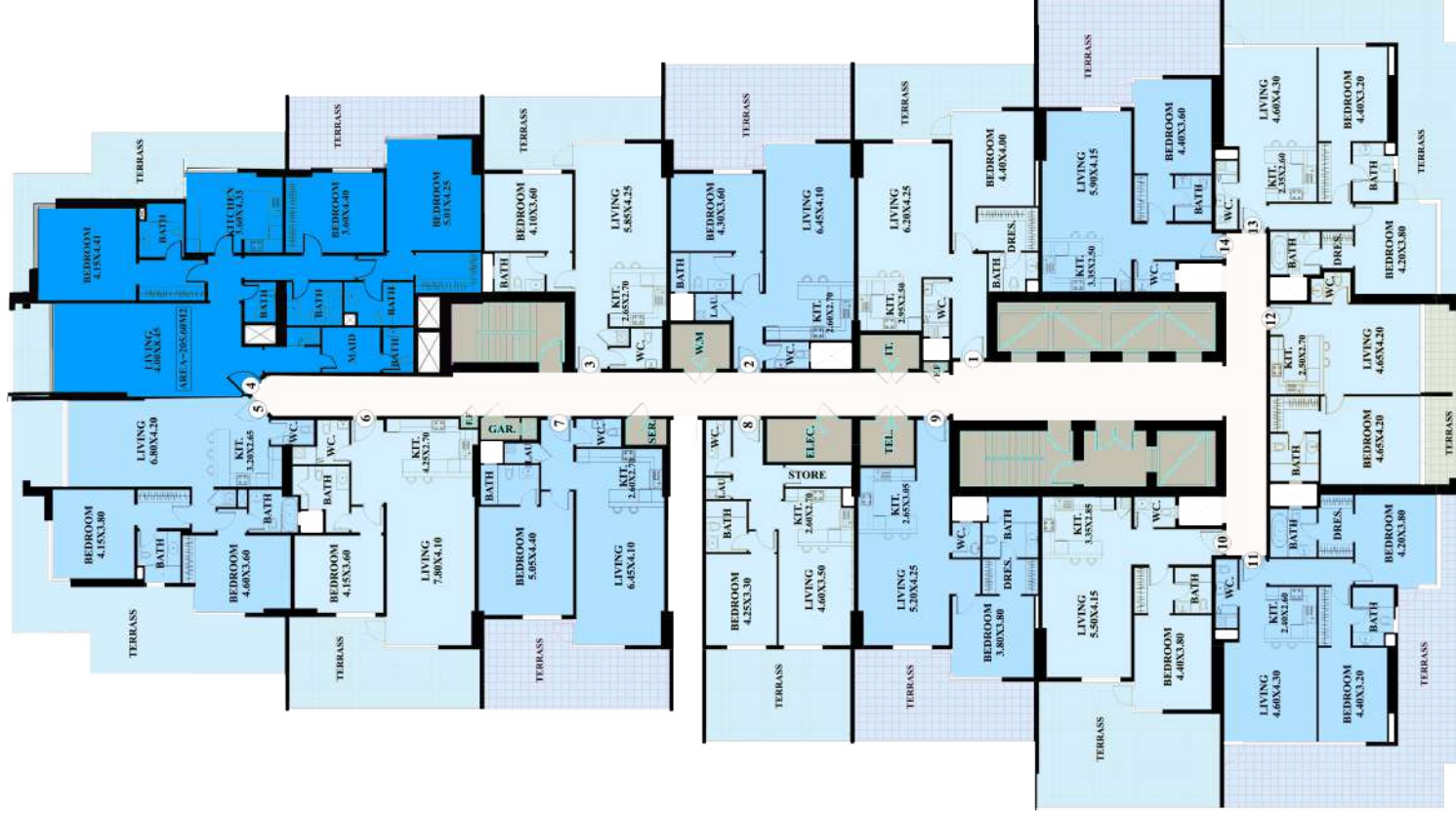
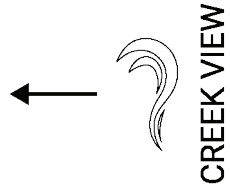


AJMAN CREEK TOWERS

TOWERS

2,3,4

MASTER PLAN

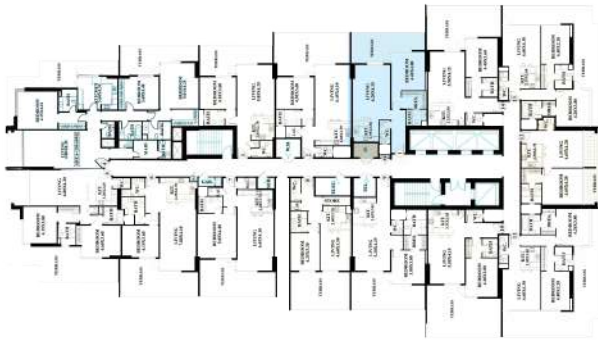


AJMAN CREEK TOWERS

APARTMENT 1 BEDROOM

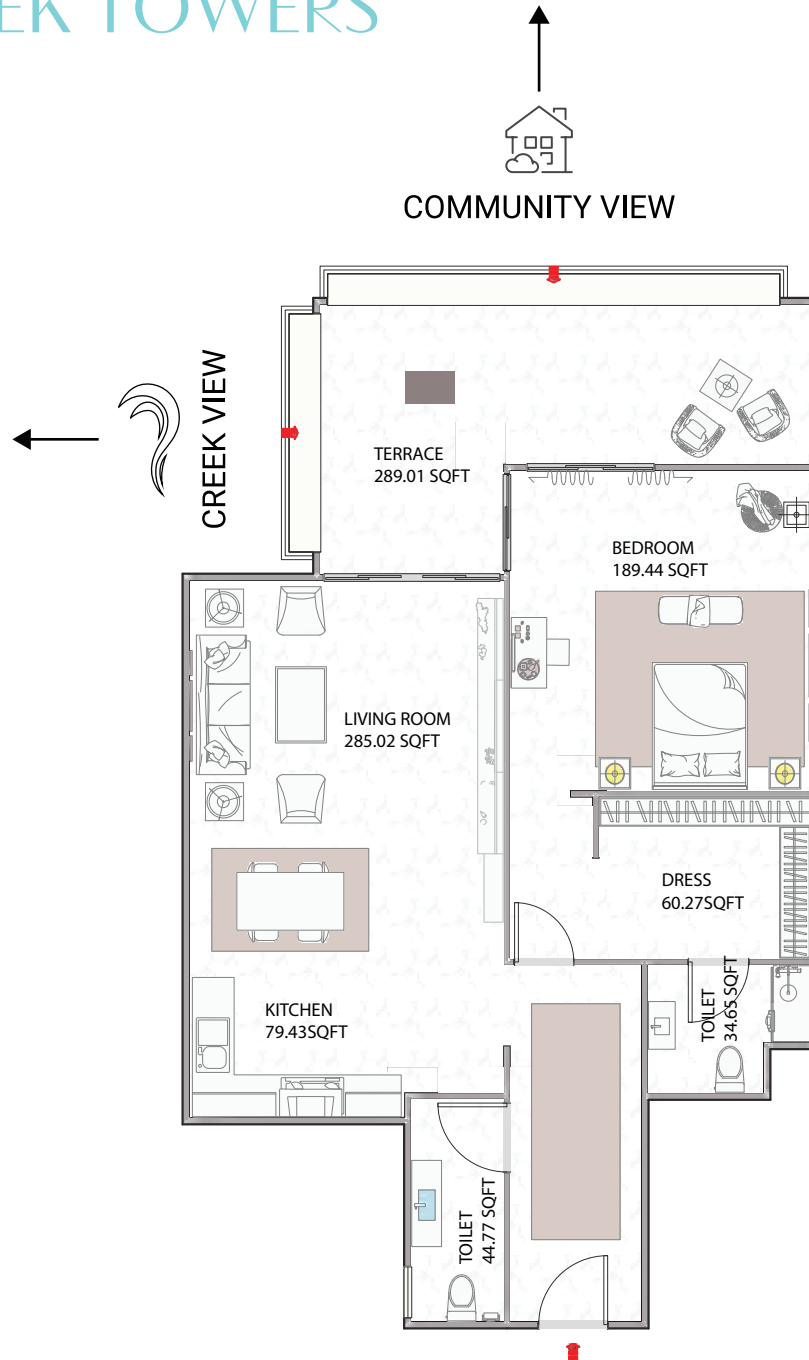
UNIT - 01

TOTAL AREA: 1496.97 SQ.FT



Disclaimer:

1. All materials, finishes, dimensions and drawings are approximate.
2. Information is subject to change without notice.
3. Actual suite area may vary from the stated area.
4. Drawings are not to scale.
5. The Developer reserves the right to make revisions/alterations without any liability whatsoever.

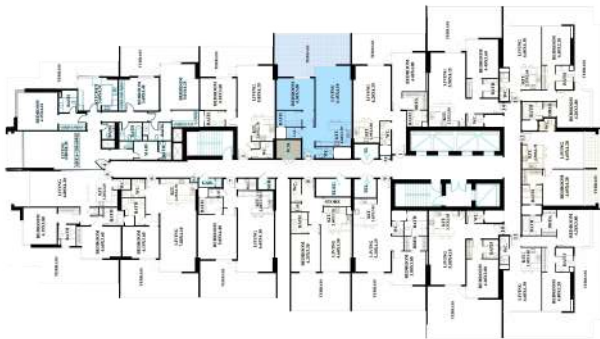


AJMAN CREEK TOWERS

APARTMENT 1 BEDROOM

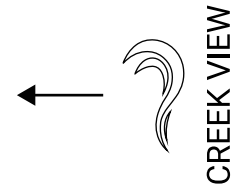
UNIT - 02

TOTAL AREA: 1641.89 SQ.FT

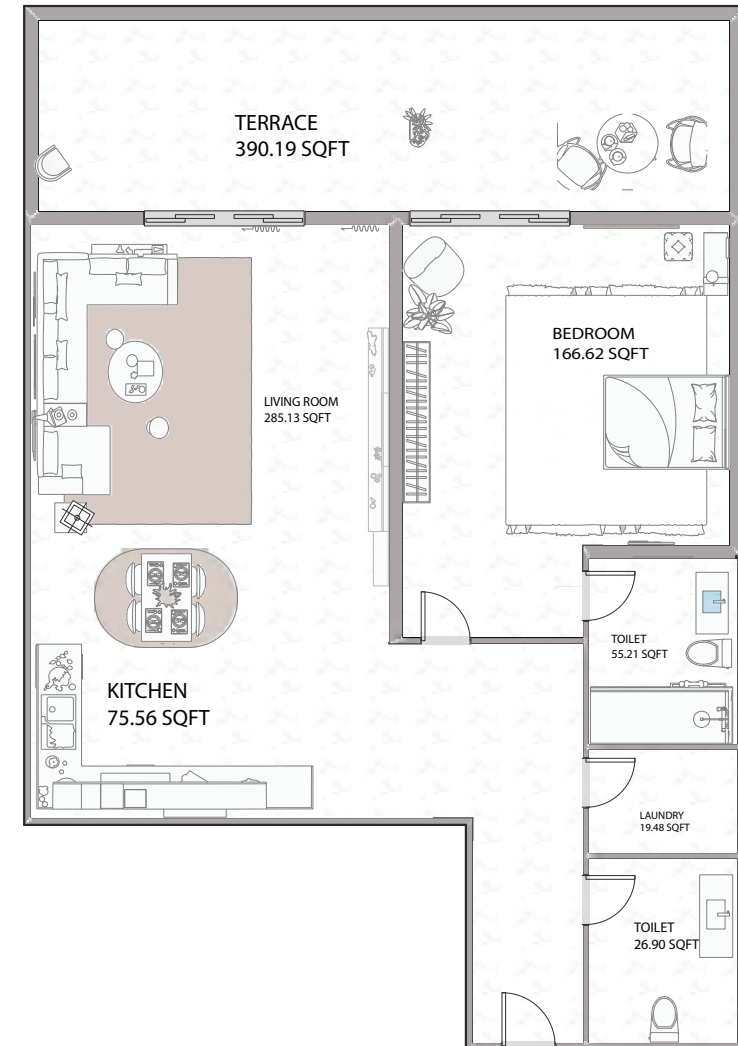


Disclaimer:

1. All materials, finishes, dimensions and drawings are approximate.
2. Information is subject to change without notice.
3. Actual suite area may vary from the stated area.
4. Drawings are not to scale.
5. The Developer reserves the right to make revisions/alterations without any liability whatsoever.



CREEK VIEW



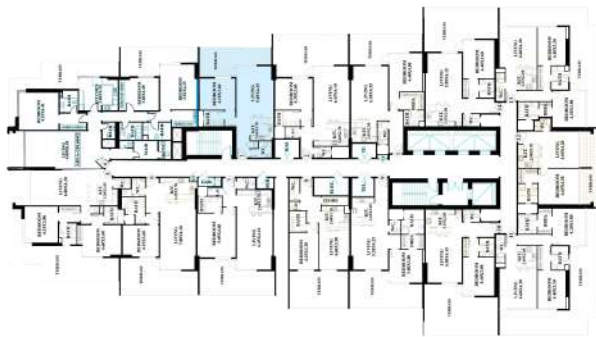
COMMUNITY VIEW

AJMAN CREEK TOWERS

APARTMENT 1 BEDROOM

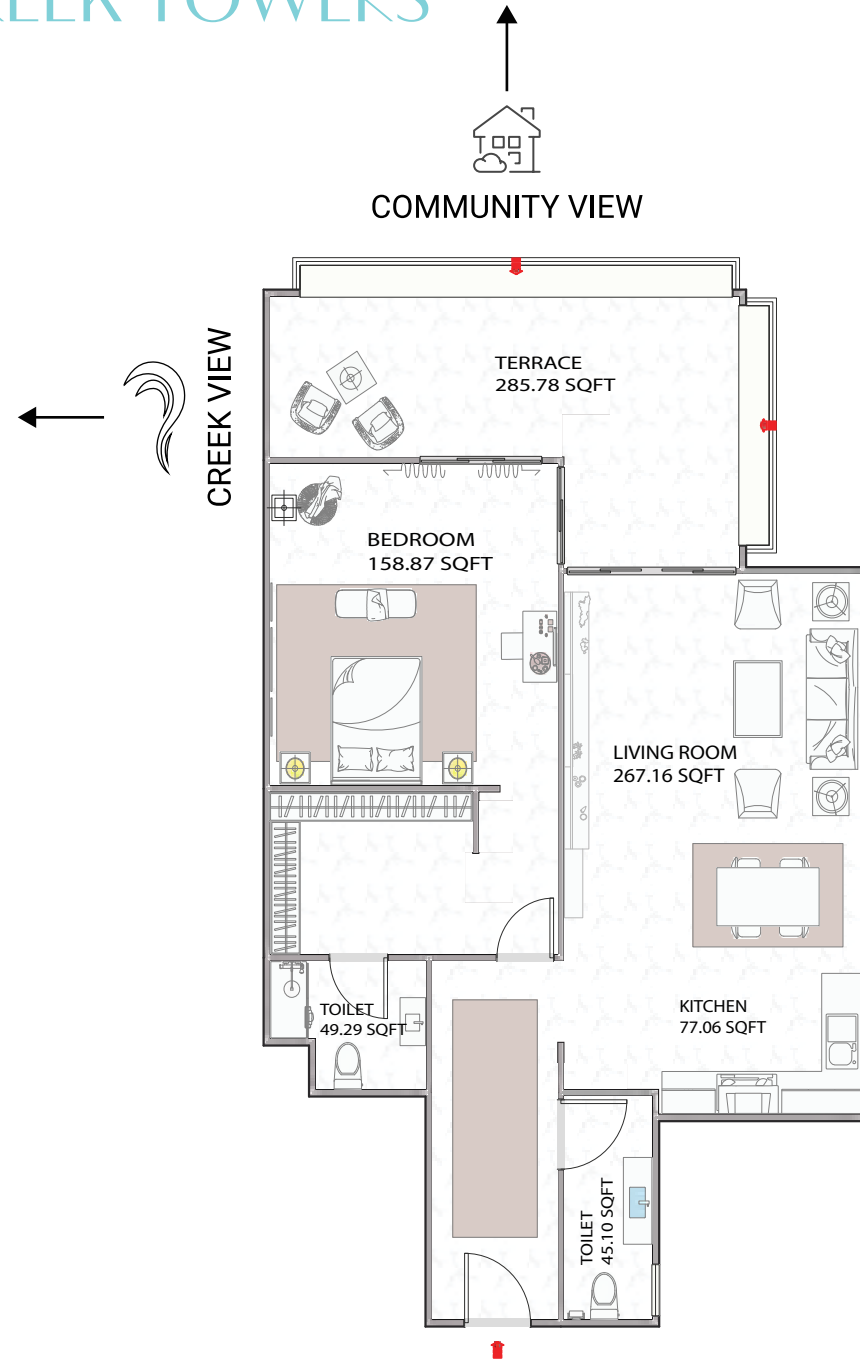
UNIT - 03

TOTAL AREA: 1329.57 SQ.FT



Disclaimer:

1. All materials, finishes, dimensions and drawings are approximate.
2. Information is subject to change without notice.
3. Actual suite area may vary from the stated area.
4. Drawings are not to scale.
5. The Developer reserves the right to make revisions/alterations without any liability whatsoever.

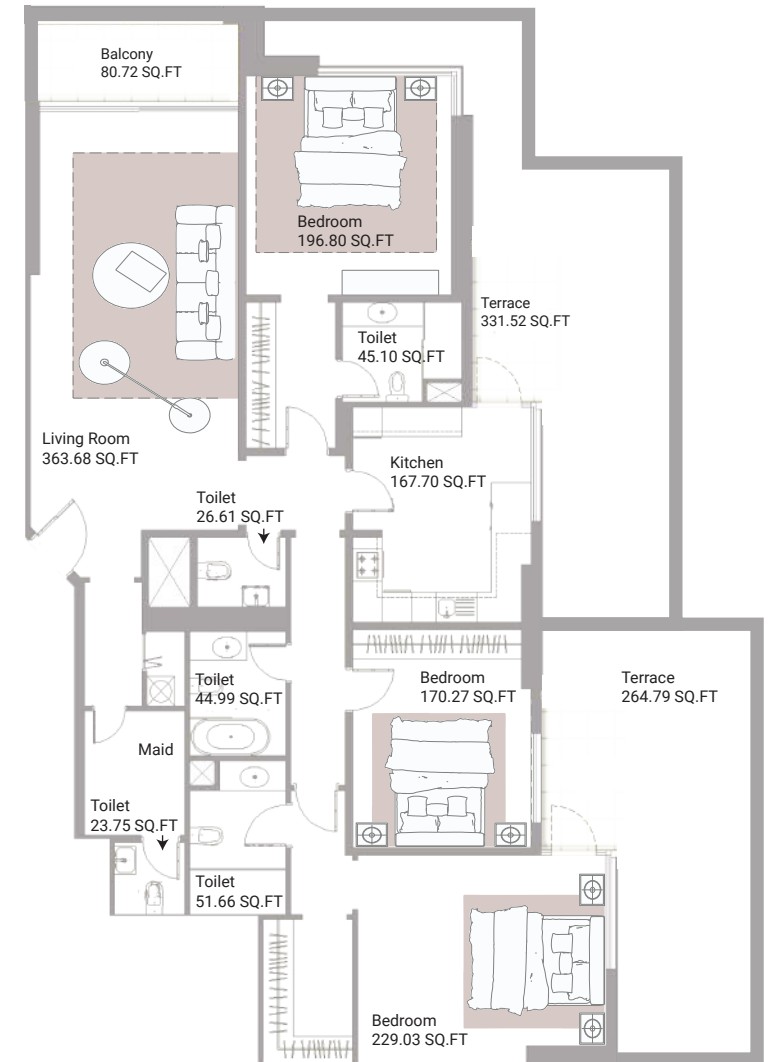
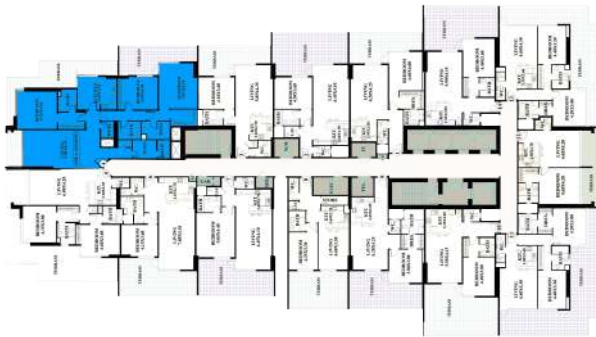


AJMAN CREEK TOWERS

APARTMENT 3 BEDROOMS

UNIT - 04

TOTAL AREA: 3433.62 SQ.FT



Disclaimer:

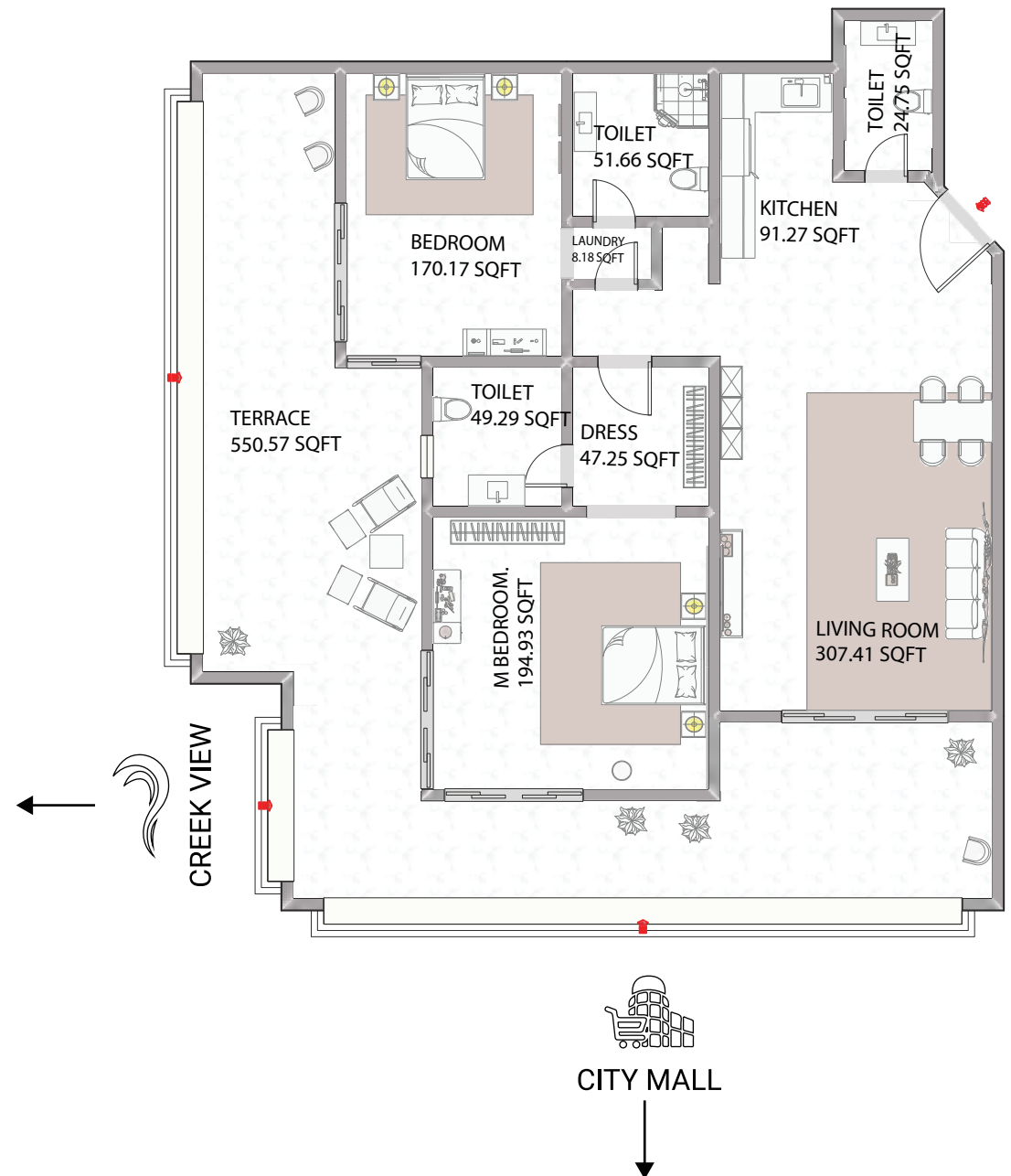
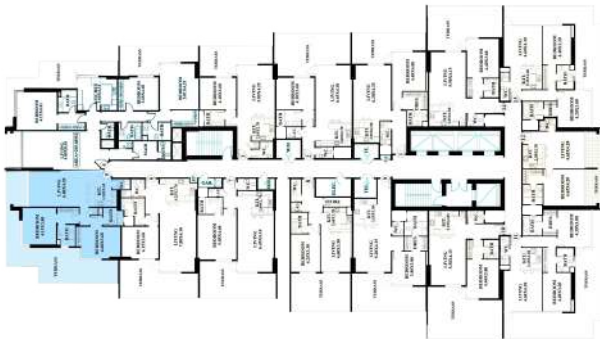
1. All materials, finishes, dimensions and drawings are approximate.
2. Information is subject to change without notice.
3. Actual suite area may vary from the stated area.
4. Drawings are not to scale.
5. The Developer reserves the right to make revisions/alterations without any liability whatsoever.

AJMAN CREEK TOWERS

APARTMENT 2 BEDROOMS

UNIT - 05

TOTAL AREA: 2181.79 SQ.FT



Disclaimer:

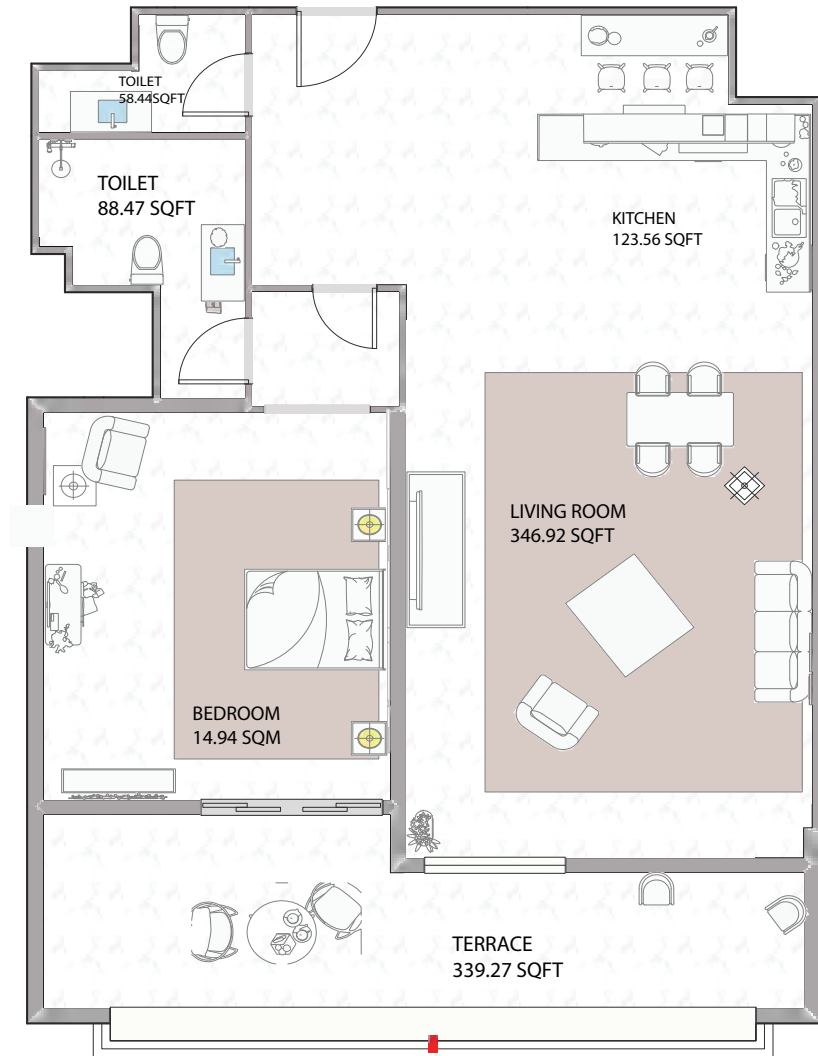
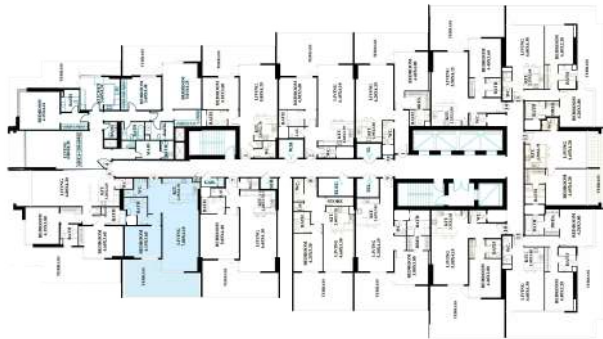
1. All materials, finishes, dimensions and drawings are approximate.
2. Information is subject to change without notice.
3. Actual suite area may vary from the stated area.
4. Drawings are not to scale.
5. The Developer reserves the right to make revisions/alterations without any liability whatsoever.

AJMAN CREEK TOWERS

APARTMENT 1 BEDROOM

UNIT - 06

TOTAL AREA: 1511.31 SQ.FT



CREEK VIEW

CREEK VIEW

CITY MALL

Disclaimer:

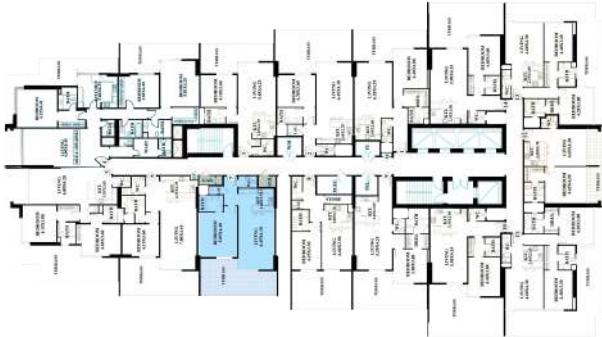
1. All materials, finishes, dimensions and drawings are approximate.
2. Information is subject to change without notice.
3. Actual suite area may vary from the stated area.
4. Drawings are not to scale.
5. The Developer reserves the right to make revisions/alterations without any liability whatsoever.

AJMAN CREEK TOWERS

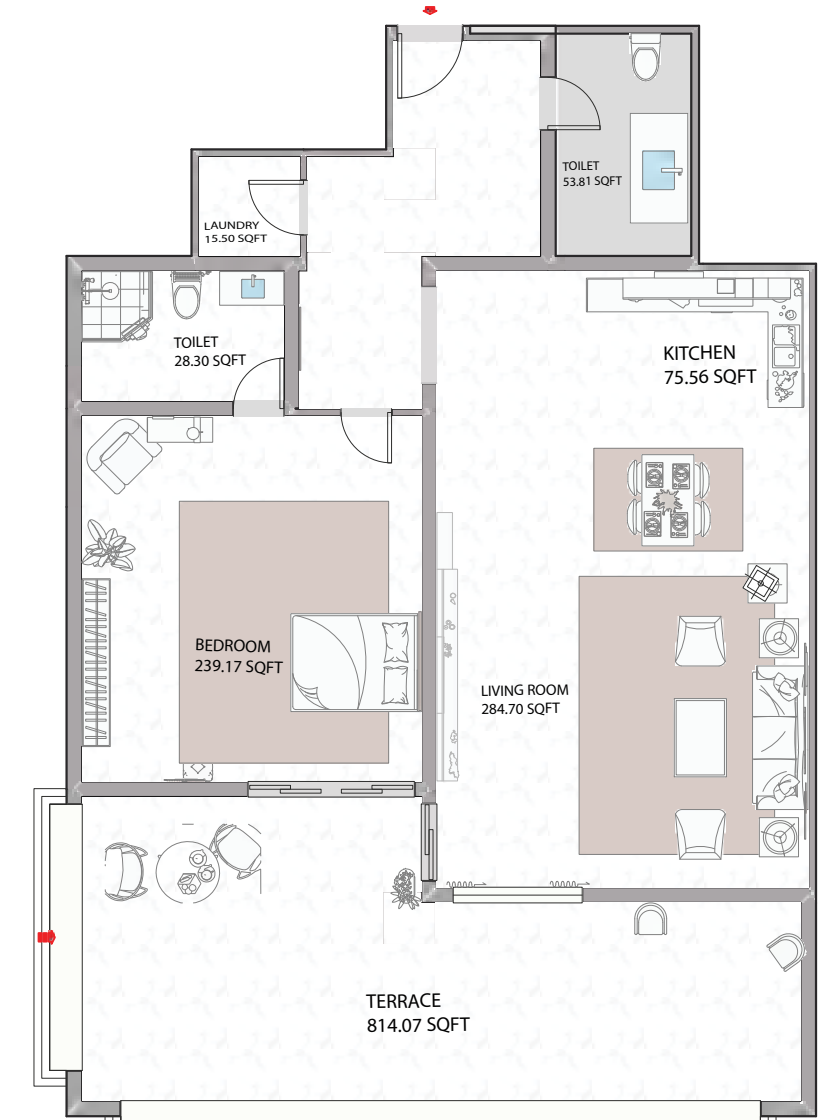
APARTMENT 1 BEDROOM

UNIT - 07

TOTAL AREA: 1528.04 SQ.FT



CREEK VIEW



CREEK VIEW

CITY MALL

Disclaimer:

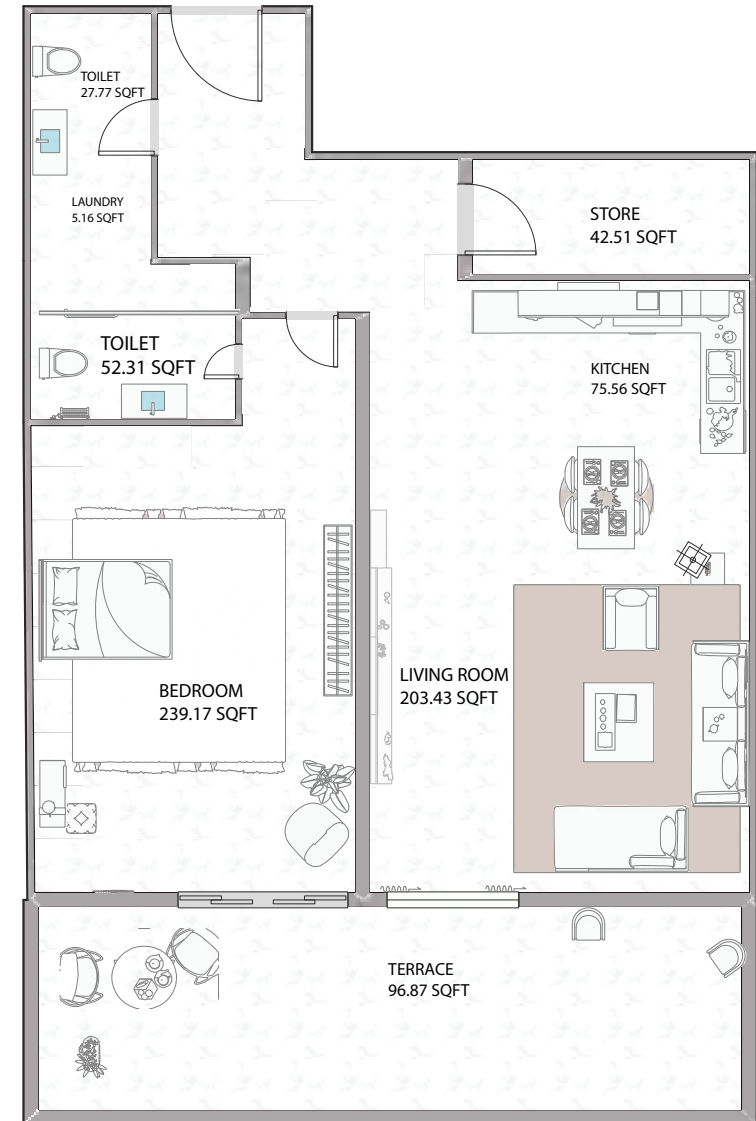
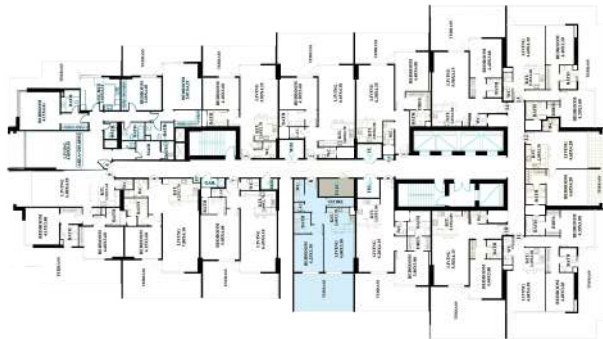
1. All materials, finishes, dimensions and drawings are approximate.
2. Information is subject to change without notice.
3. Actual suite area may vary from the stated area.
4. Drawings are not to scale.
5. The Developer reserves the right to make revisions/alterations without any liability whatsoever.

AJMAN CREEK TOWERS

APARTMENT 1 BEDROOM

UNIT - 08

TOTAL AREA: 1219.09 SQ.FT



CREEK VIEW

CREEK VIEW

CITY MALL

Disclaimer:

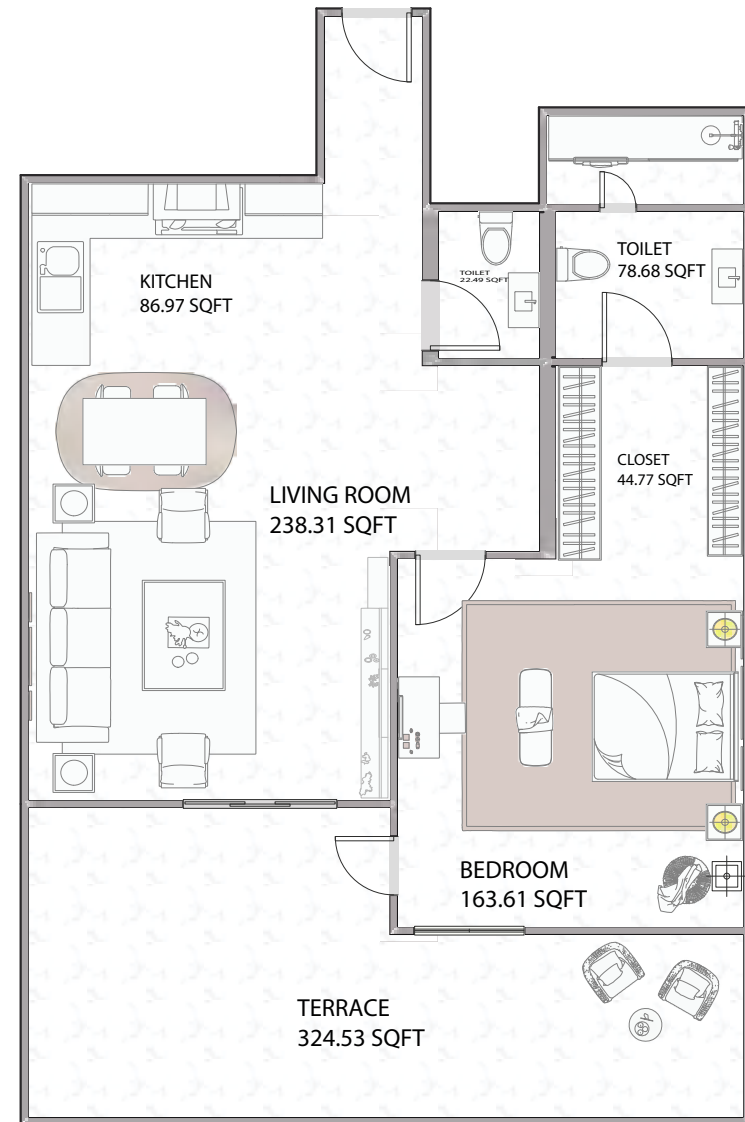
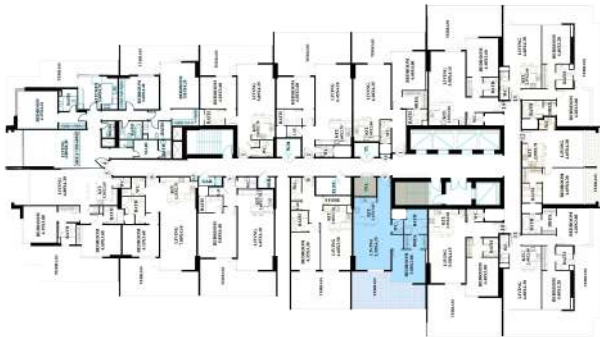
1. All materials, finishes, dimensions and drawings are approximate.
2. Information is subject to change without notice.
3. Actual suite area may vary from the stated area.
4. Drawings are not to scale.
5. The Developer reserves the right to make revisions/alterations without any liability whatsoever.

AJMAN CREEK TOWERS

APARTMENT 1 BEDROOM

UNIT - 09

TOTAL AREA: 1433.72 SQ.FT



CREEK VIEW

CREEK VIEW

CITY MALL

Disclaimer:

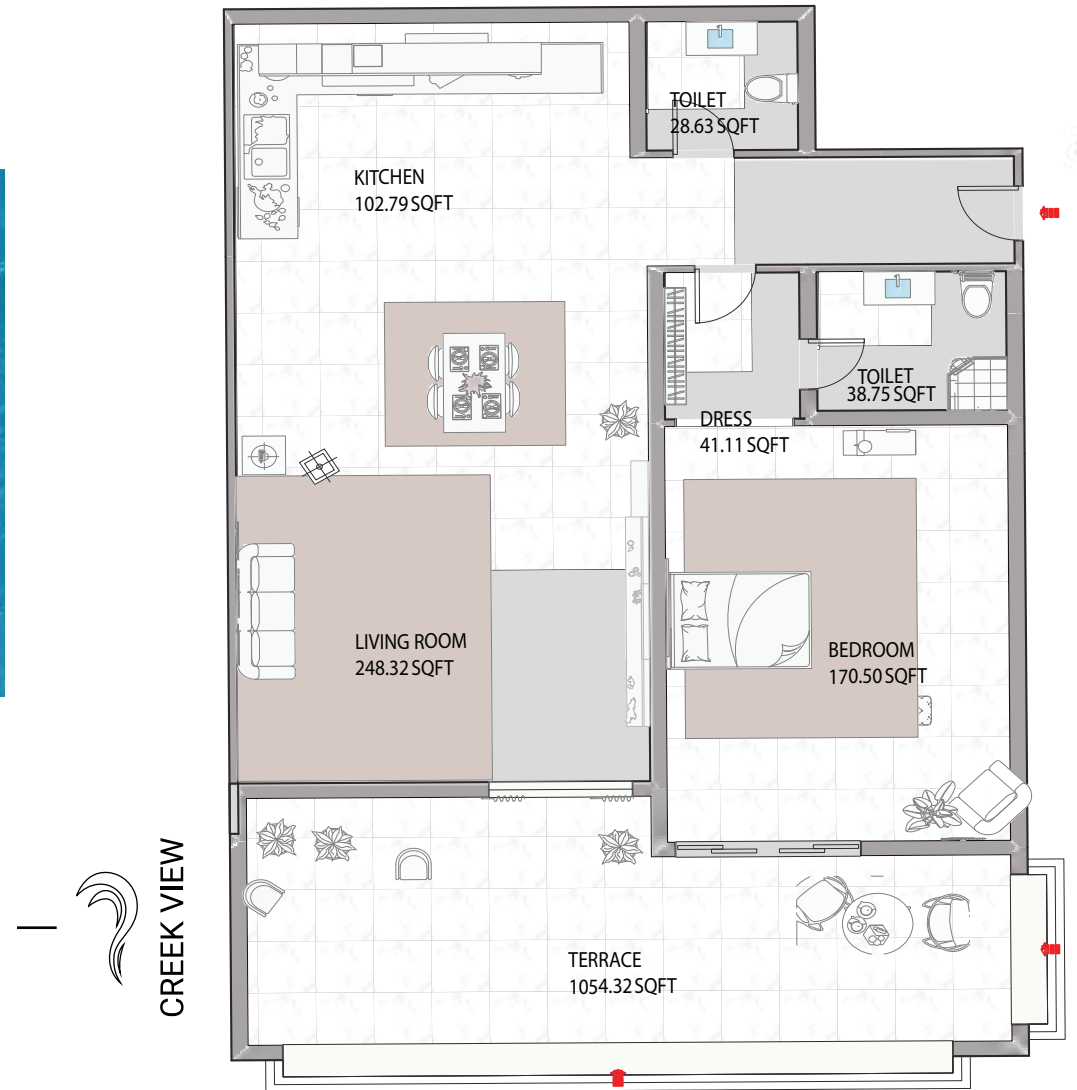
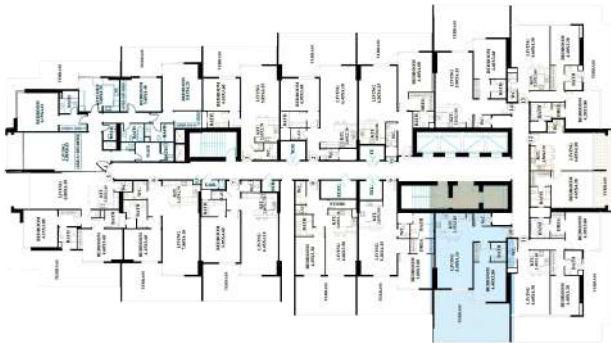
1. All materials, finishes, dimensions and drawings are approximate.
2. Information is subject to change without notice.
3. Actual suite area may vary from the stated area.
4. Drawings are not to scale.
5. The Developer reserves the right to make revisions/alterations without any liability whatsoever.

AJMAN CREEK TOWERS

APARTMENT 1 BEDROOM

UNIT - 10

TOTAL AREA: 1685.19 SQ.FT



Disclaimer:

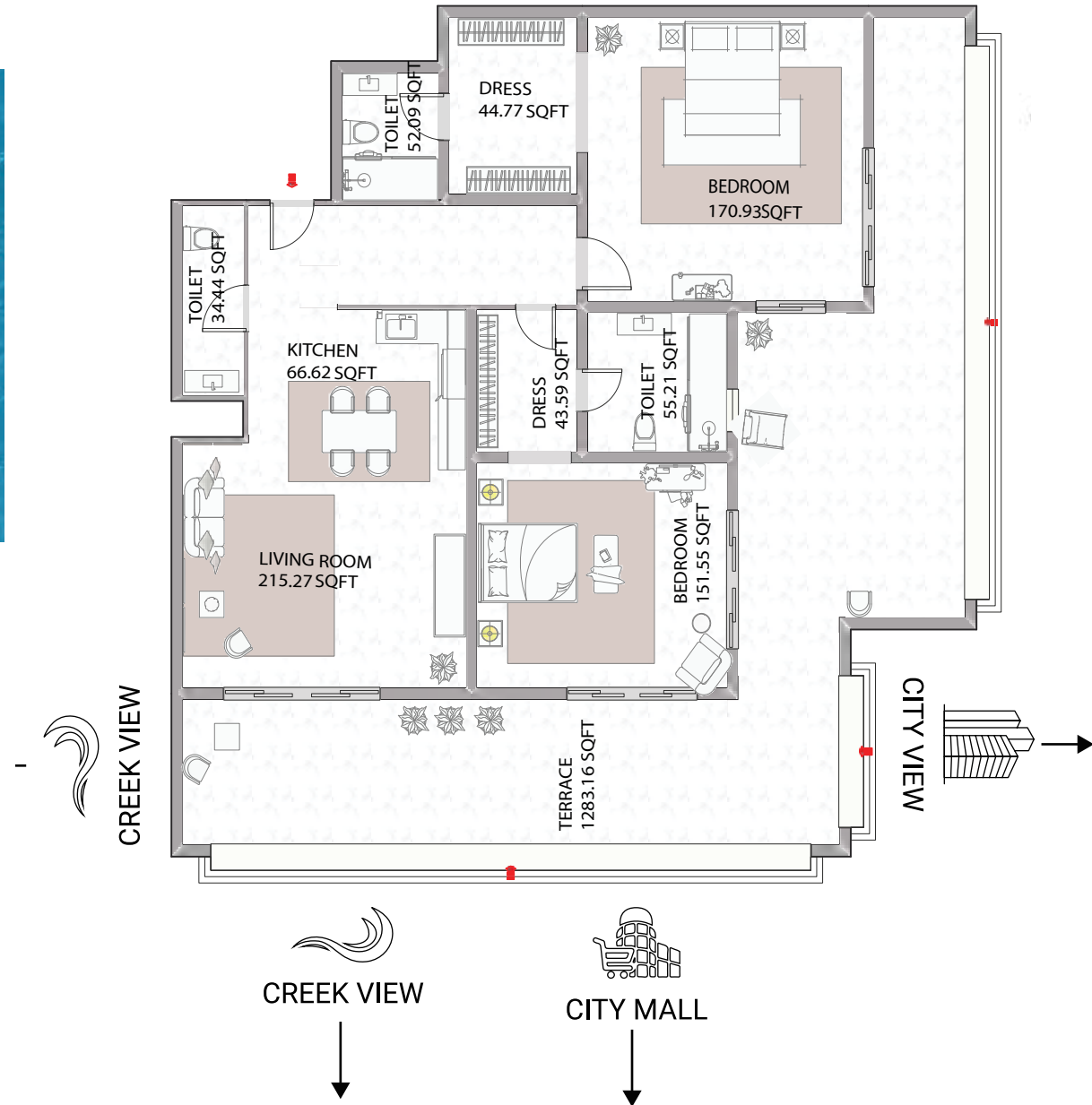
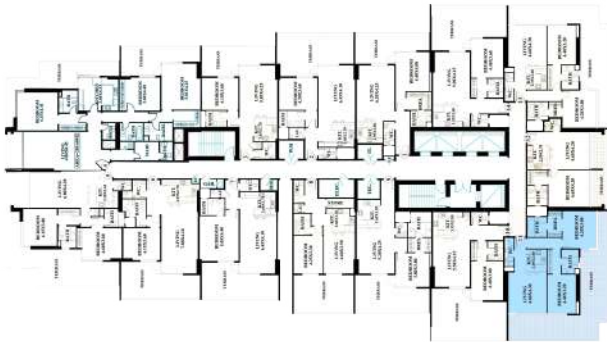
1. All materials, finishes, dimensions and drawings are approximate.
2. Information is subject to change without notice.
3. Actual suite area may vary from the stated area.
4. Drawings are not to scale.
5. The Developer reserves the right to make revisions/alterations without any liability whatsoever.

AJMAN CREEK TOWERS

APARTMENT 2 BEDROOMS

UNIT - 11

TOTAL AREA: 2277.79 SQ.FT



Disclaimer:

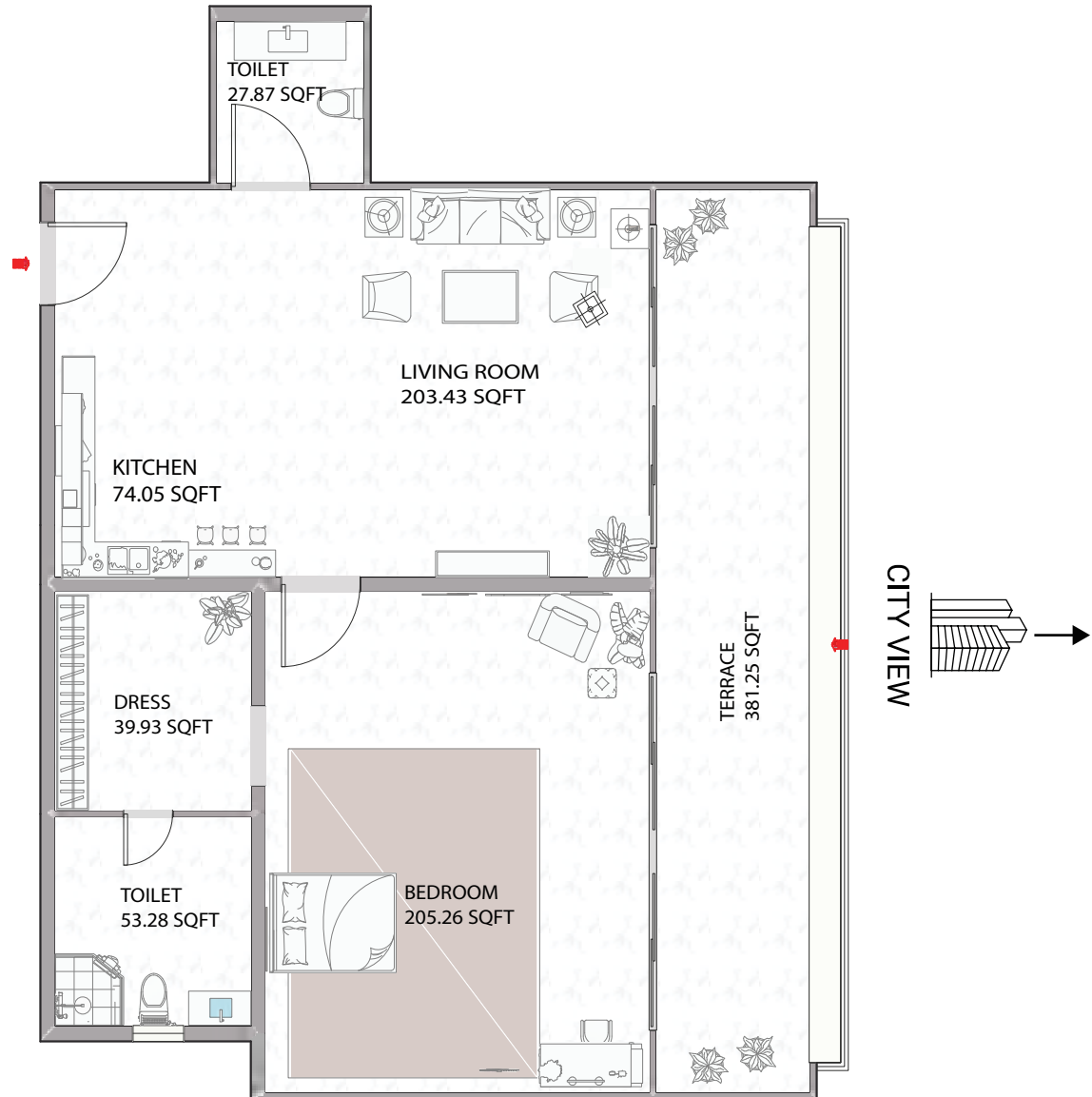
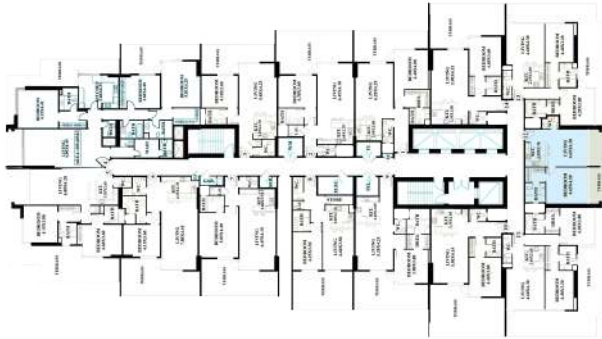
1. All materials, finishes, dimensions and drawings are approximate.
2. Information is subject to change without notice.
3. Actual suite area may vary from the stated area.
4. Drawings are not to scale.
5. The Developer reserves the right to make revisions/alterations without any liability whatsoever.

AJMAN CREEK TOWERS

APARTMENT 1 BEDROOM

UNIT - 12

TOTAL AREA: 1180.01 SQ.FT



Disclaimer:

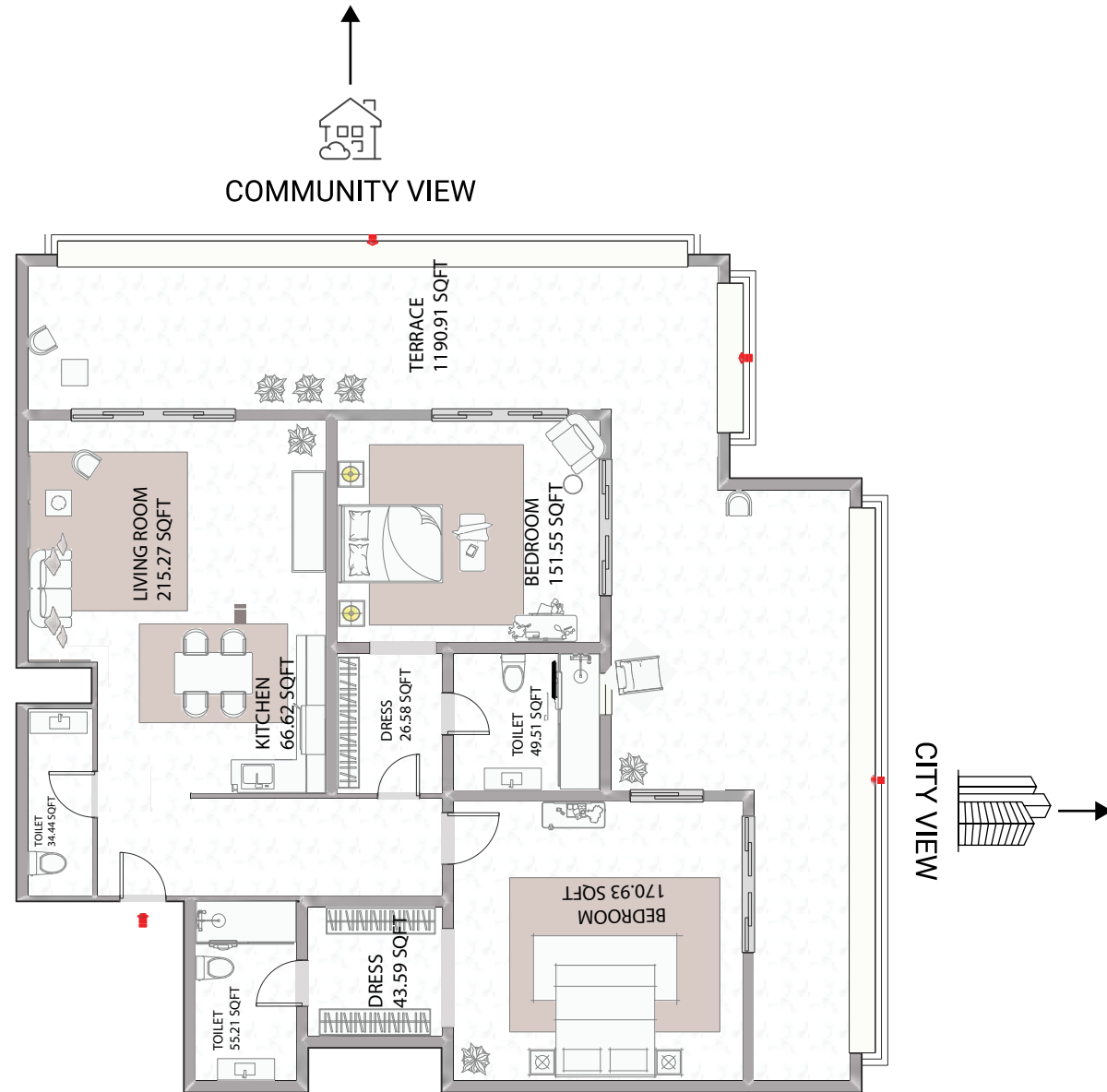
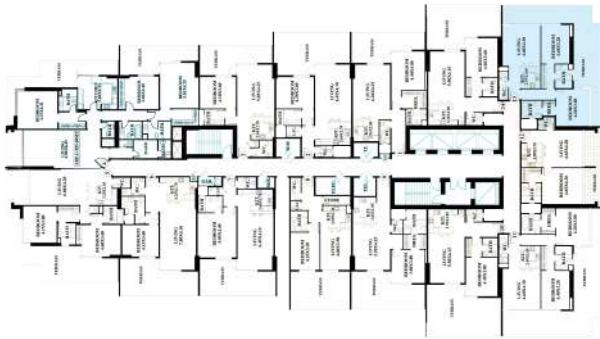
1. All materials, finishes, dimensions and drawings are approximate.
2. Information is subject to change without notice.
3. Actual suite area may vary from the stated area.
4. Drawings are not to scale.
5. The Developer reserves the right to make revisions/alterations without any liability whatsoever.

AJMAN CREEK TOWERS

APARTMENT 2 BEDROOMS

UNIT - 13

TOTAL AREA: 2112.63 SQ.FT



Disclaimer:

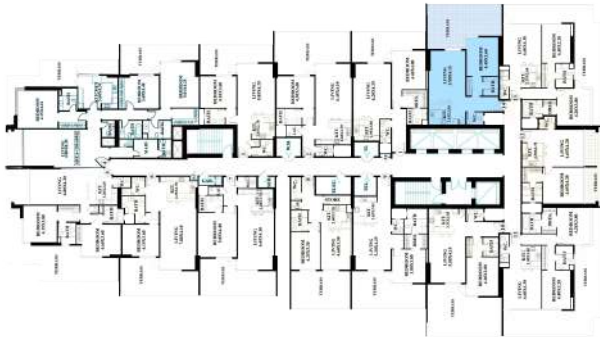
1. All materials, finishes, dimensions and drawings are approximate.
2. Information is subject to change without notice.
3. Actual suite area may vary from the stated area.
4. Drawings are not to scale.
5. The Developer reserves the right to make revisions/alterations without any liability whatsoever.

AJMAN CREEK TOWERS

APARTMENT 1 BEDROOM

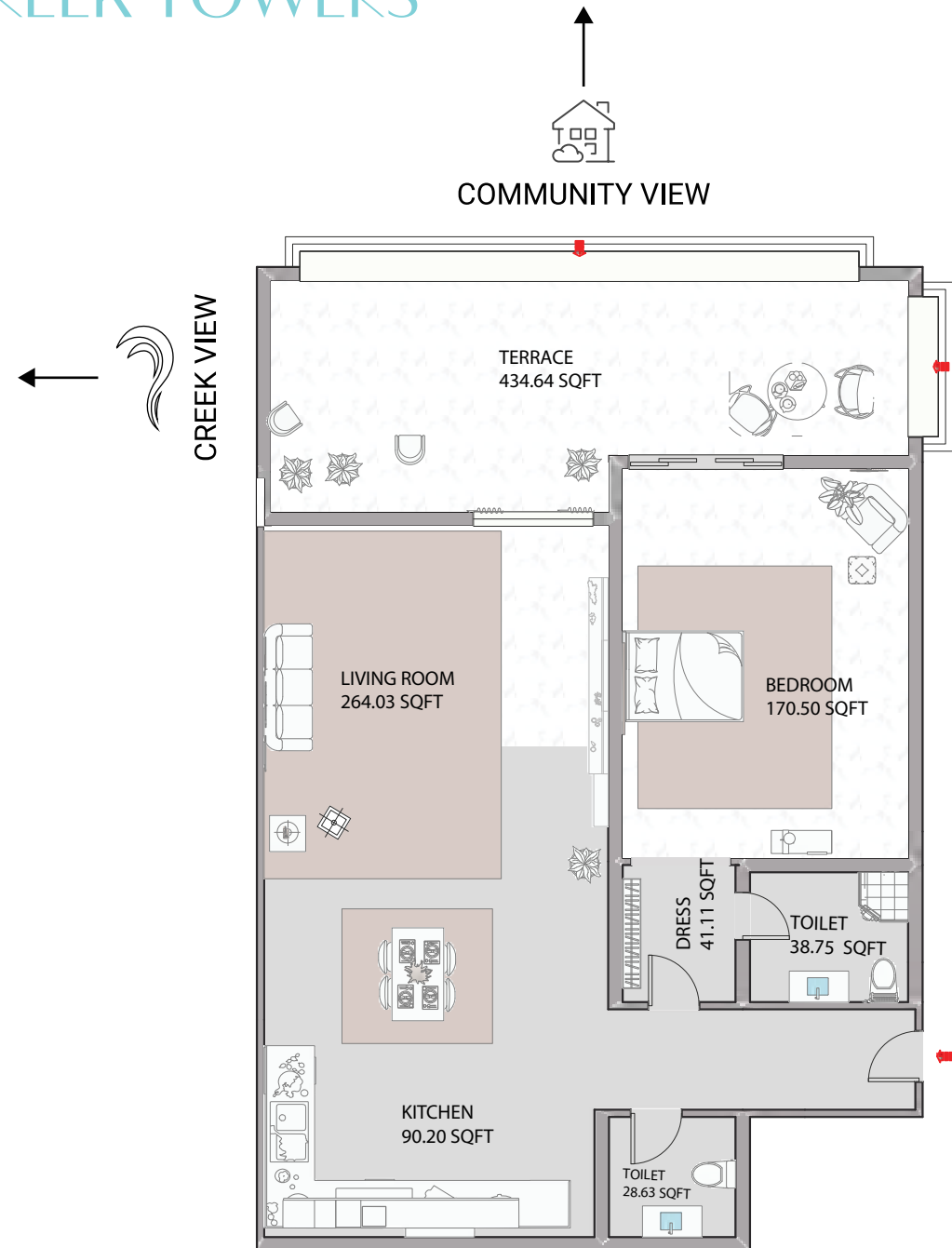
UNIT - 14

TOTAL AREA: 1590.73 SQ.FT



Disclaimer:

1. All materials, finishes, dimensions and drawings are approximate.
2. Information is subject to change without notice.
3. Actual suite area may vary from the stated area.
4. Drawings are not to scale.
5. The Developer reserves the right to make revisions/alterations without any liability whatsoever.



3 Bedroom Apartment

The floor plan illustrates a 3-bedroom apartment building with 15 units, numbered 01 through 15. The units are arranged around a central corridor. Each unit is color-coded in blue and includes a living area, kitchen, bedrooms, bathrooms, and balconies. The dimensions and areas for each unit are as follows:

- Unit 01:** Living 6.23x4.25, Area=89.40M², Bedroom 4.40x3.60, Bath, Kitchen 2.50x2.95, Kit 2.50x2.95, Bal.
- Unit 02:** Living 7.51x4.10, Area=90.90M², Bedroom 3.60x4.30, Bath, Kitchen 2.50x4.25, Kit 2.50x4.25, Bal.
- Unit 03:** Living 6.04x4.25, Area=78.90M², Bedroom 3.60x4.10, Bath, Kitchen 2.50x4.25, Kit 2.50x4.25, Bal.
- Unit 04:** Living 4.00x8.45, Area=205.50M², Bedroom 4.15x4.41, Bath, Kitchen 3.60x4.33, Bedroom 3.60x4.40, Bal.
- Unit 05:** Living 4.00x7.00, Area=121.06M², Bedroom 4.15x3.81, Bath, Kitchen 4.20x3.60, Kit 4.20x3.60, Bal.
- Unit 06:** Living 5.91x4.20, Area=85.60M², Bedroom 3.60x4.15, Bath, Kitchen 3.05x2.70, Kit 3.05x2.70, Bal.
- Unit 07:** Living 6.51x4.20, Area=89.90M², Bedroom 4.20x4.30, Bath, Kitchen 2.70x2.78, Kit 2.70x2.78, Bal.
- Unit 08:** Living 6.20x4.30, Area=90.30M², Bedroom 4.75x4.10, Bath, Kitchen 3.67x2.70, Kit 3.67x2.70, Bal.
- Unit 09:** Living 4.91x4.25, Area=80.70M², Bedroom 3.80x4.00, Bath, Kitchen 2.50x2.60, Kit 2.50x2.60, Bal.
- Unit 10:** Living 6.11x4.15, Area=80.60M², Bedroom 4.40x3.60, Bath, Kitchen 2.30x4.15, Kit 2.30x4.15, Bal.
- Unit 11:** Living 4.85x4.30, Area=117.00M², Bedroom 4.40x3.20, Bath, Kitchen 2.30x4.15, Kit 2.30x4.15, Bal.
- Unit 12:** Living 4.20x4.70, Area=81.60M², Bedroom 4.10x4.65, Bath, Kitchen 2.30x4.15, Kit 2.30x4.15, Bal.
- Unit 13:** Living 4.85x4.30, Area=114.10M², Bedroom 4.40x3.20, Bath, Kitchen 2.30x4.15, Kit 2.30x4.15, Bal.
- Unit 14:** Living 6.11x4.15, Area=80.60M², Bedroom 4.40x3.60, Bath, Kitchen 2.30x4.15, Kit 2.30x4.15, Bal.
- Unit 15:** Living 4.85x4.30, Area=114.10M², Bedroom 4.40x3.20, Bath, Kitchen 2.30x4.15, Kit 2.30x4.15, Bal.

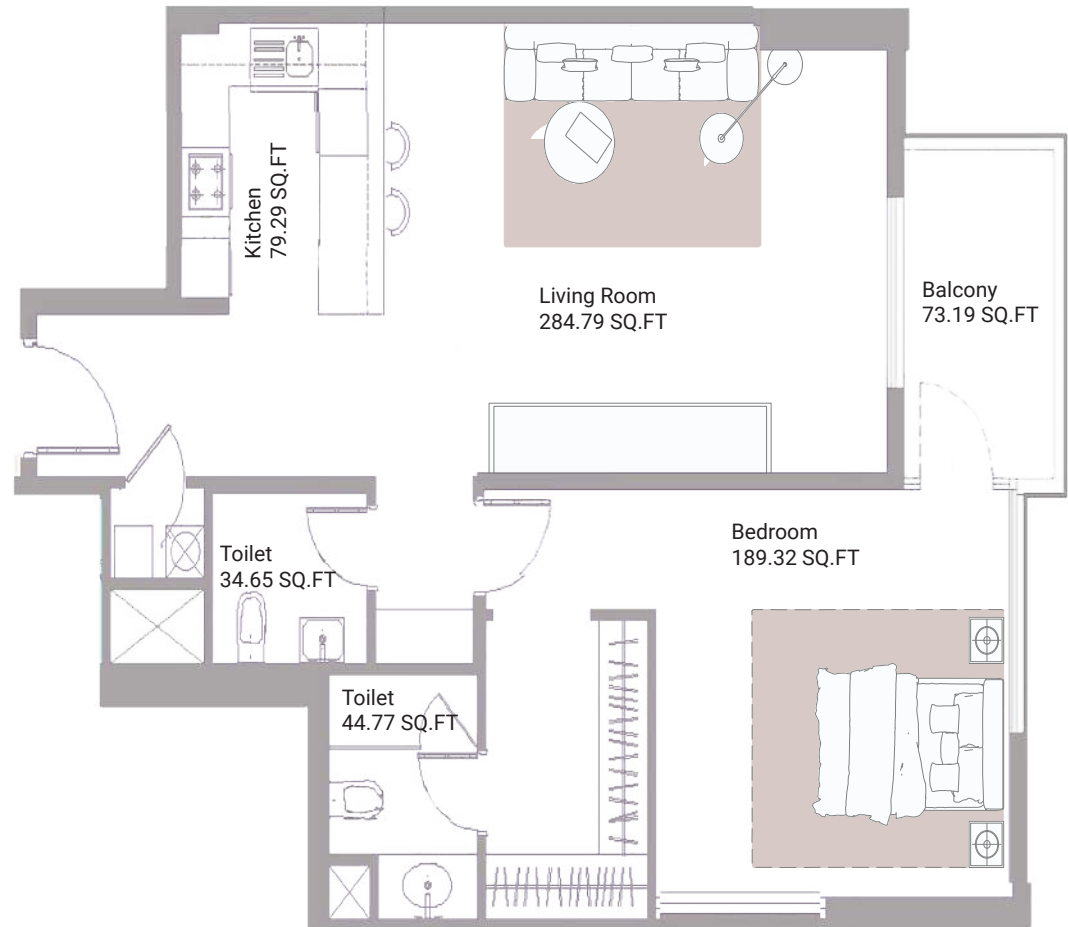
- 3 Bedroom Apartment
- 2 Bedroom Apartment
- 1 Bedroom Apartment

AJMAN CREEK TOWERS

APARTMENT **1 BEDROOM**

UNIT - 01

TOTAL AREA: 1240.03 SQ.FT



Disclaimer:

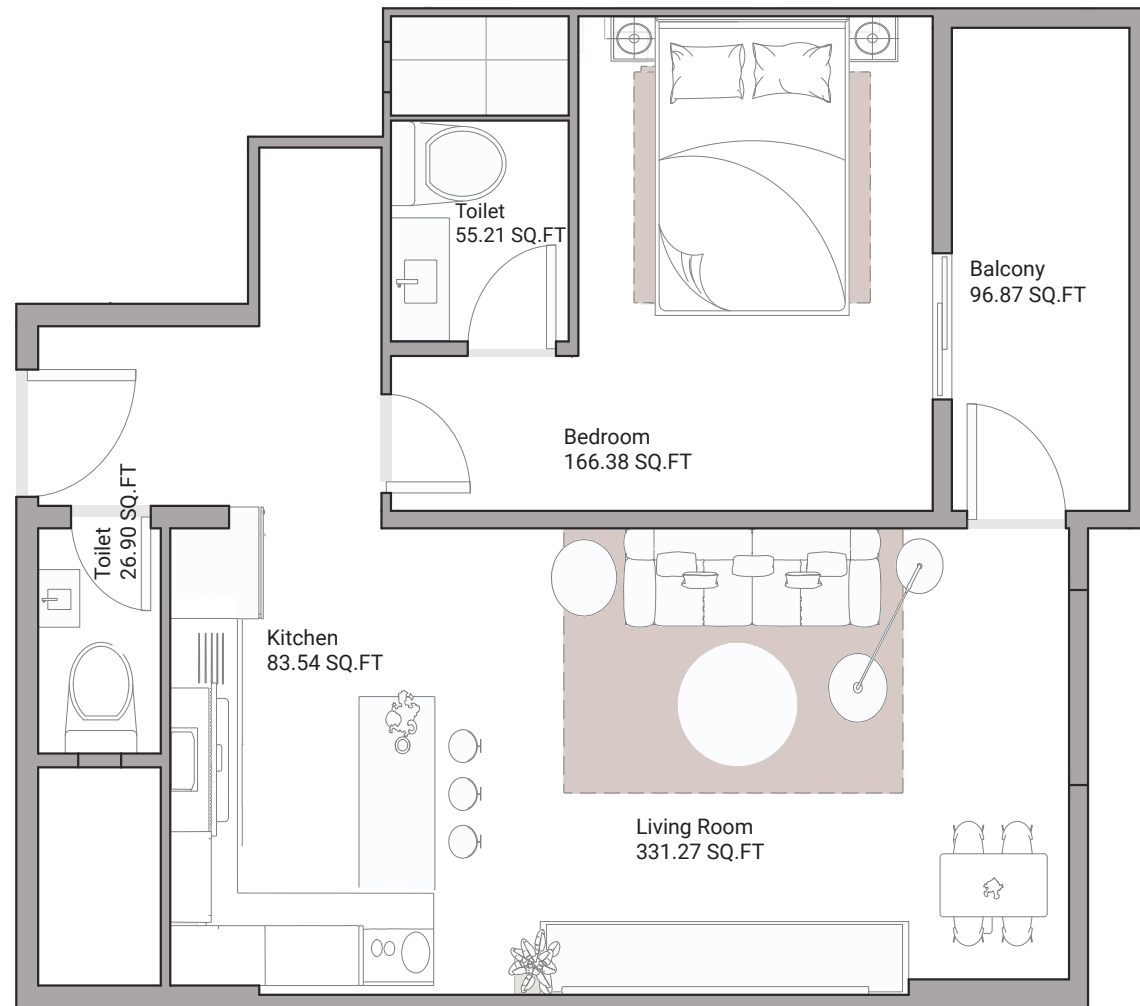
1. All materials, finishes, dimensions and drawings are approximate.
2. Information is subject to change without notice.
3. Actual suite area may vary from the stated area.
4. Drawings are not to scale.
5. The Developer reserves the right to make revisions/alterations without any liability whatsoever.

AJMAN CREEK TOWERS

APARTMENT **1 BEDROOM**

UNIT - 02

TOTAL AREA: 1229.21 SQ.FT



Disclaimer:

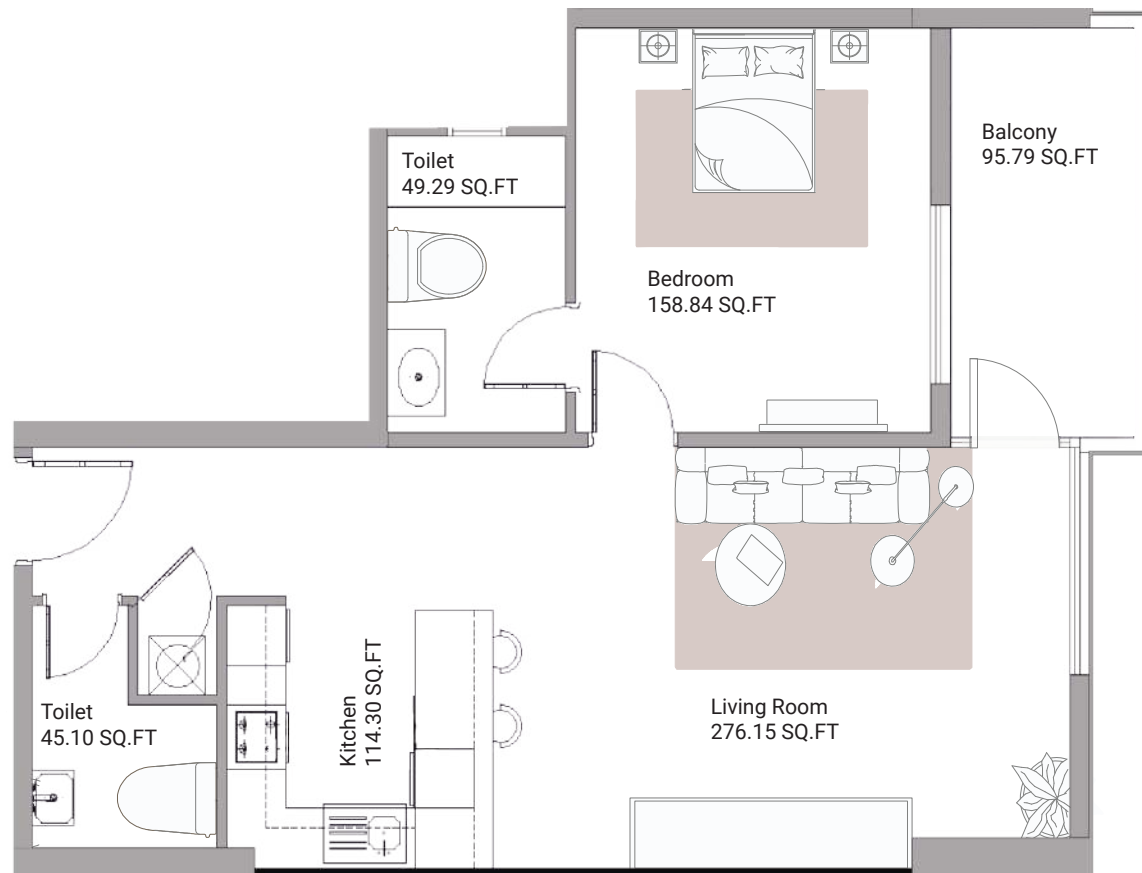
1. All materials, finishes, dimensions and drawings are approximate.
2. Information is subject to change without notice.
3. Actual suite area may vary from the stated area.
4. Drawings are not to scale.
5. The Developer reserves the right to make revisions/alterations without any liability whatsoever.

AJMAN CREEK TOWERS

APARTMENT 1 BEDROOM

UNIT - 03

TOTAL AREA: 1117.46 SQ.FT



Disclaimer:

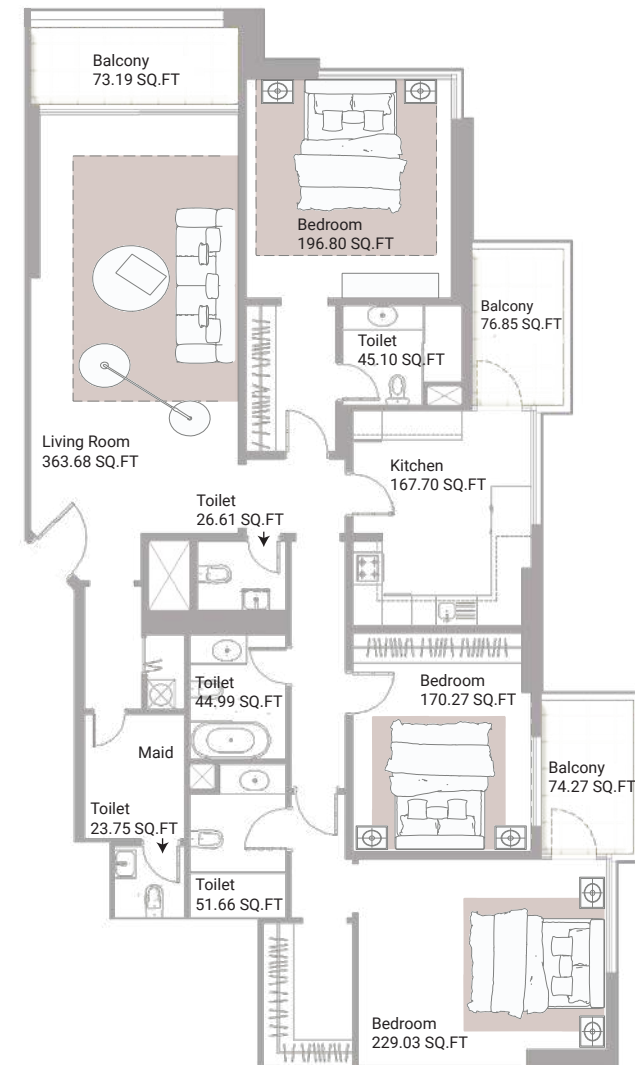
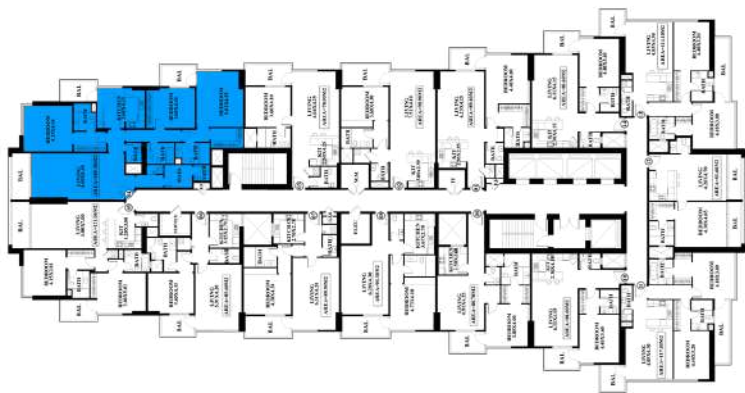
1. All materials, finishes, dimensions and drawings are approximate.
2. Information is subject to change without notice.
3. Actual suite area may vary from the stated area.
4. Drawings are not to scale.
5. The Developer reserves the right to make revisions/alterations without any liability whatsoever.

AJMAN CREEK TOWERS

APARTMENT 3 BEDROOMS

UNIT - 04

TOTAL AREA: 2766.66 SQ.FT



Disclaimer:

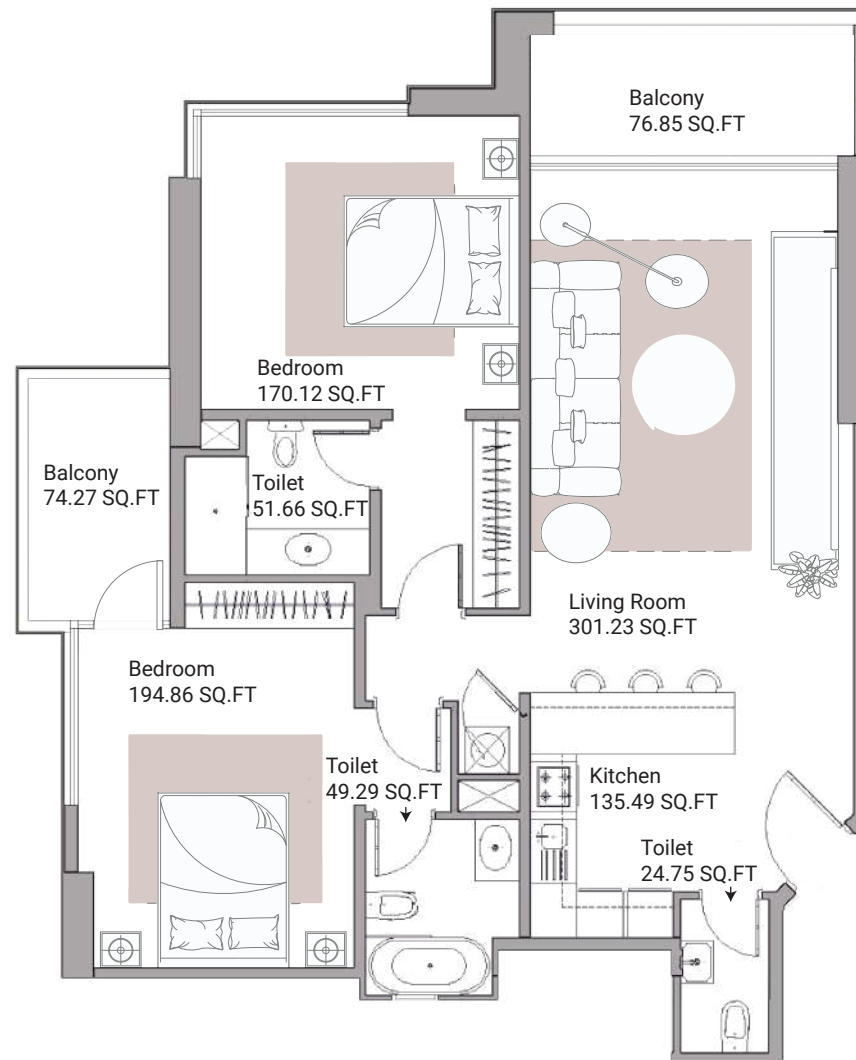
1. All materials, finishes, dimensions and drawings are approximate.
2. Information is subject to change without notice.
3. Actual suite area may vary from the stated area.
4. Drawings are not to scale.
5. The Developer reserves the right to make revisions/alterations without any liability whatsoever.

AJMAN CREEK TOWERS

APARTMENT 2 BEDROOMS

UNIT - 05

TOTAL AREA: 1673.94 SQ.FT



Disclaimer:

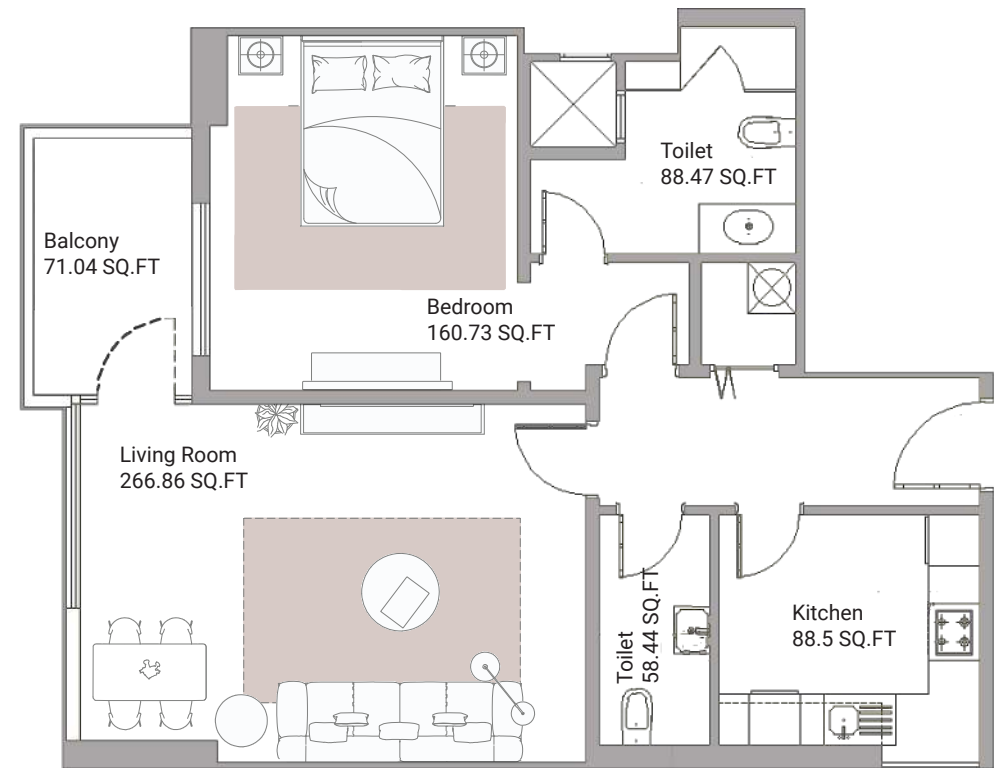
1. All materials, finishes, dimensions and drawings are approximate.
2. Information is subject to change without notice.
3. Actual suite area may vary from the stated area.
4. Drawings are not to scale.
5. The Developer reserves the right to make revisions/alterations without any liability whatsoever.

AJMAN CREEK TOWERS

APARTMENT 1 BEDROOM

UNIT - 06

TOTAL AREA: 1143.32 SQ.FT



Disclaimer:

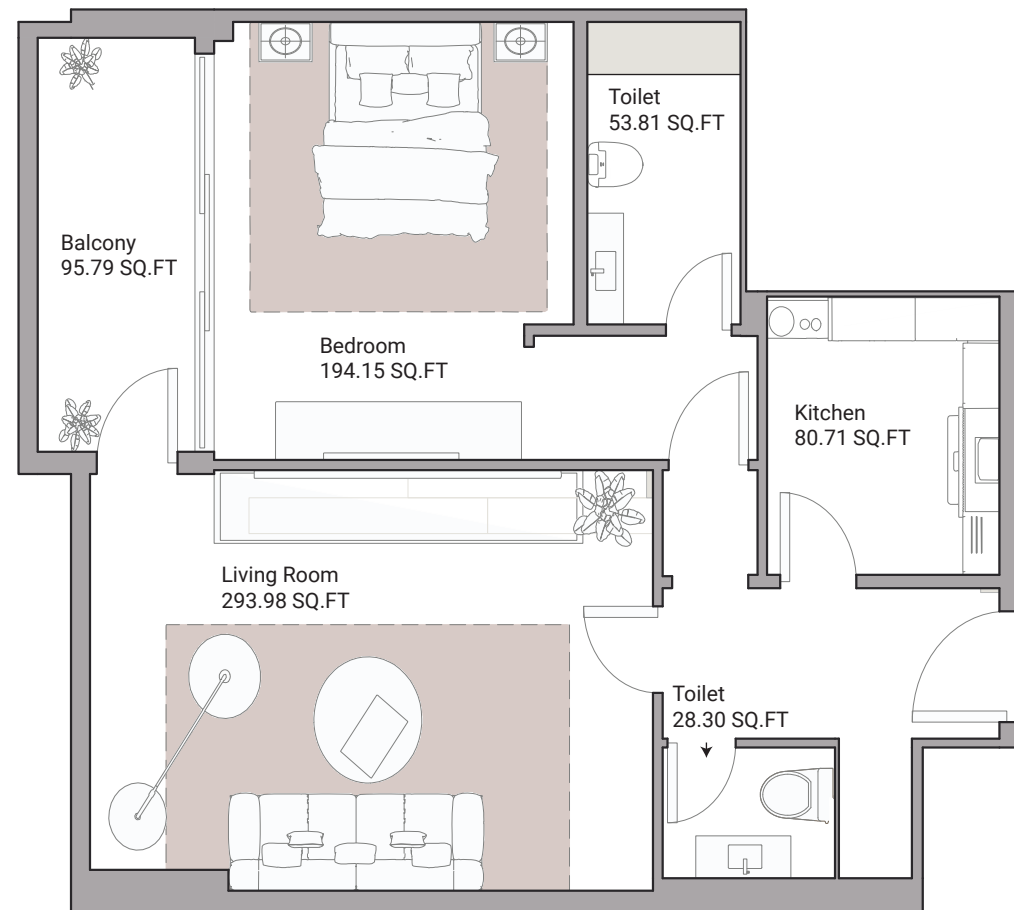
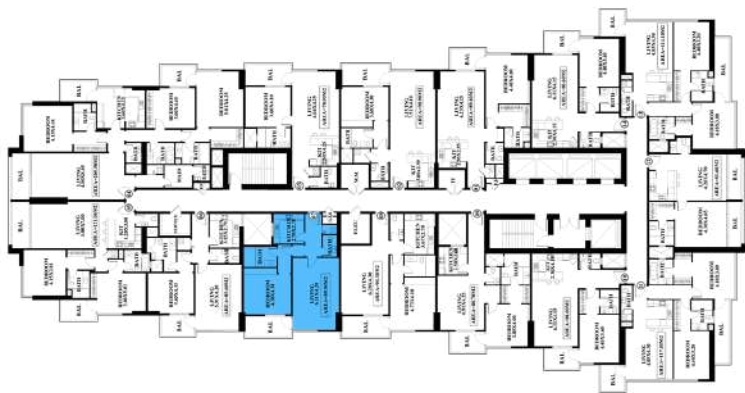
1. All materials, finishes, dimensions and drawings are approximate.
2. Information is subject to change without notice.
3. Actual suite area may vary from the stated area.
4. Drawings are not to scale.
5. The Developer reserves the right to make revisions/alterations without any liability whatsoever.

AJMAN CREEK TOWERS

APARTMENT **1 BEDROOM**

UNIT - 07

TOTAL AREA: 1205.17 SQ.FT



Disclaimer:

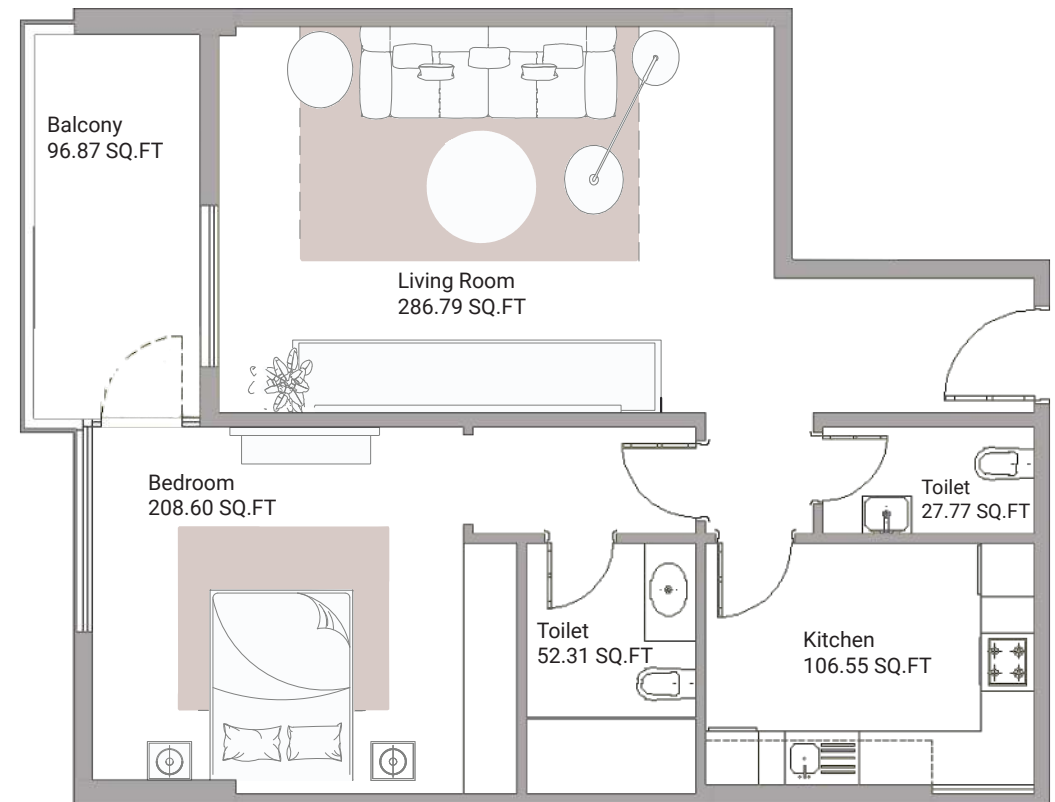
1. All materials, finishes, dimensions and drawings are approximate.
2. Information is subject to change without notice.
3. Actual suite area may vary from the stated area.
4. Drawings are not to scale.
5. The Developer reserves the right to make revisions/alterations without any liability whatsoever.

AJMAN CREEK TOWERS

APARTMENT 1 BEDROOM

UNIT - 08

TOTAL AREA: 1234.97 SQ.FT



Disclaimer:

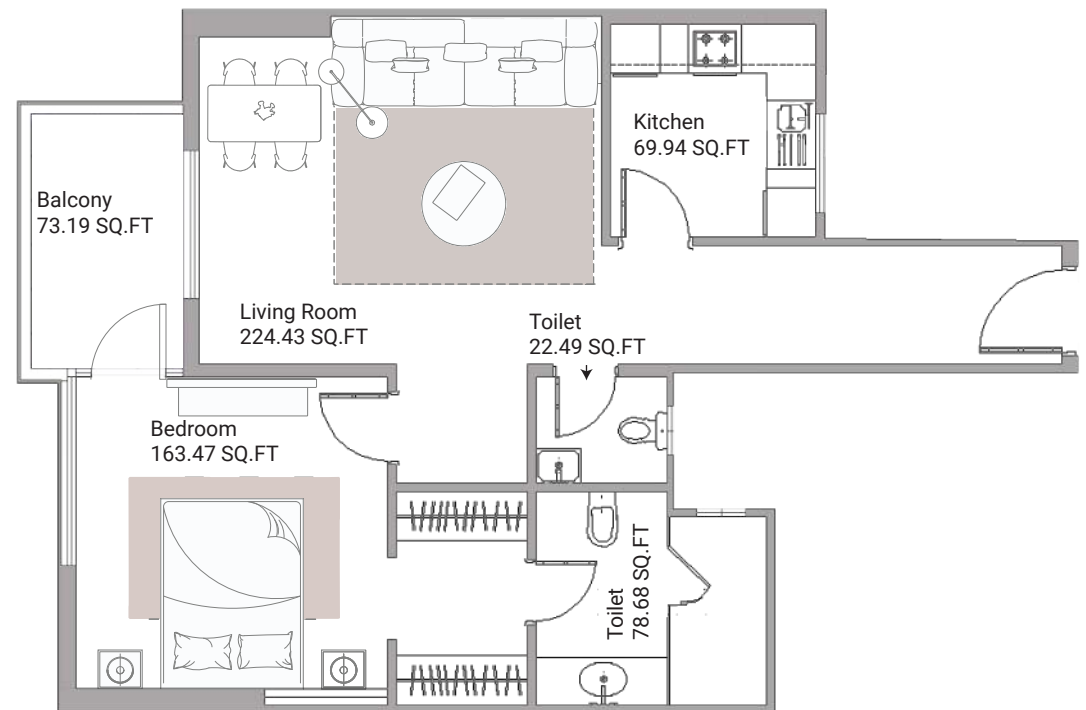
1. All materials, finishes, dimensions and drawings are approximate.
2. Information is subject to change without notice.
3. Actual suite area may vary from the stated area.
4. Drawings are not to scale.
5. The Developer reserves the right to make revisions/alterations without any liability whatsoever.

AJMAN CREEK TOWERS

APARTMENT **1 BEDROOM**

UNIT - 09

TOTAL AREA: 1104.39 SQ.FT



Disclaimer:

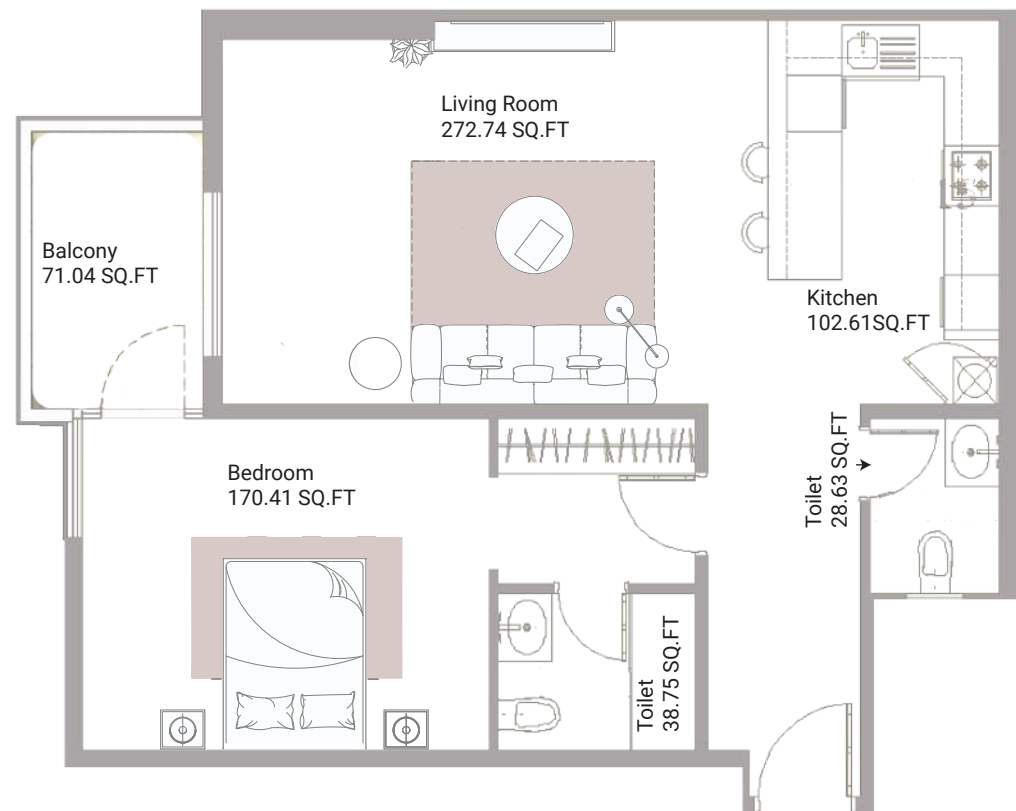
1. All materials, finishes, dimensions and drawings are approximate.
2. Information is subject to change without notice.
3. Actual suite area may vary from the stated area.
4. Drawings are not to scale.
5. The Developer reserves the right to make revisions/alterations without any liability whatsoever.

AJMAN CREEK TOWERS

APARTMENT **1 BEDROOM**

UNIT - 10

TOTAL AREA: 1128.28 SQ.FT



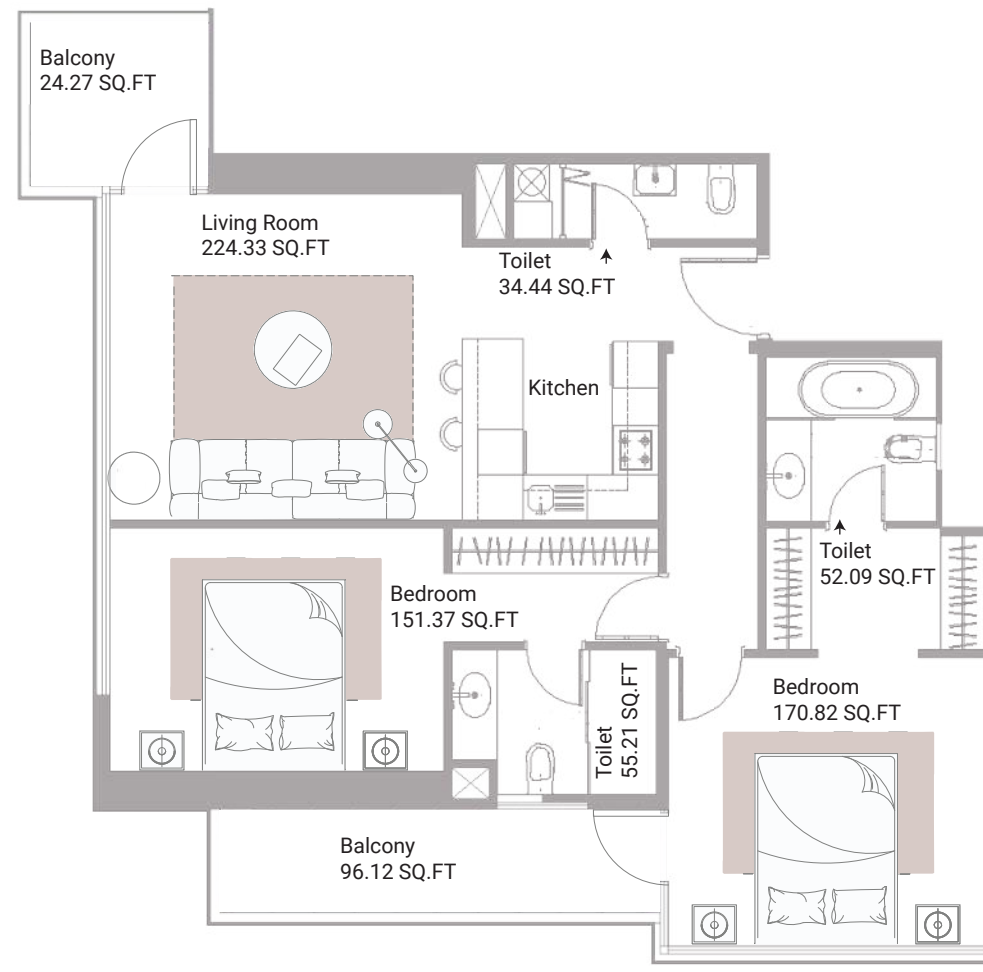
Disclaimer:

1. All materials, finishes, dimensions and drawings are approximate.
2. Information is subject to change without notice.
3. Actual suite area may vary from the stated area.
4. Drawings are not to scale.
5. The Developer reserves the right to make revisions/alterations without any liability whatsoever.

AJMAN CREEK TOWERS

APARTMENT 2 BEDROOMS

UNIT - 11
TOTAL AREA: 1597.62 SQ.FT



Disclaimer:

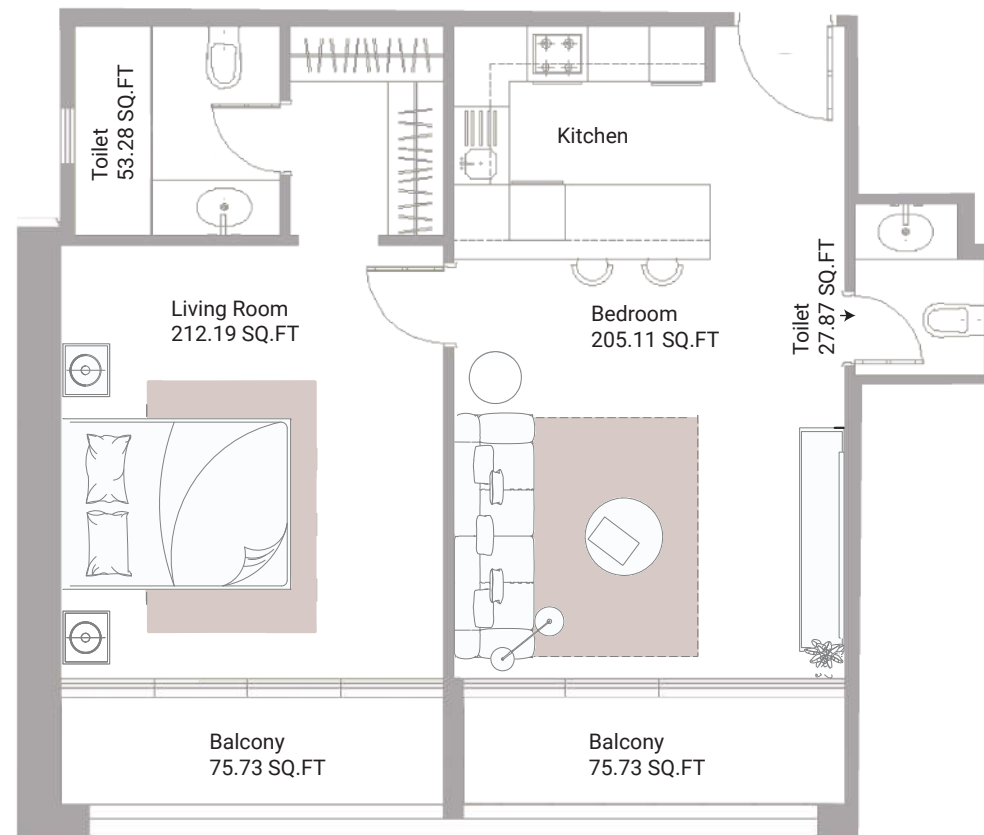
1. All materials, finishes, dimensions and drawings are approximate.
2. Information is subject to change without notice.
3. Actual suite area may vary from the stated area.
4. Drawings are not to scale.
5. The Developer reserves the right to make revisions/alterations without any liability whatsoever.

AJMAN CREEK TOWERS

APARTMENT **1 BEDROOM**

UNIT - 12

TOTAL AREA: 1108.46 SQ.FT



Disclaimer:

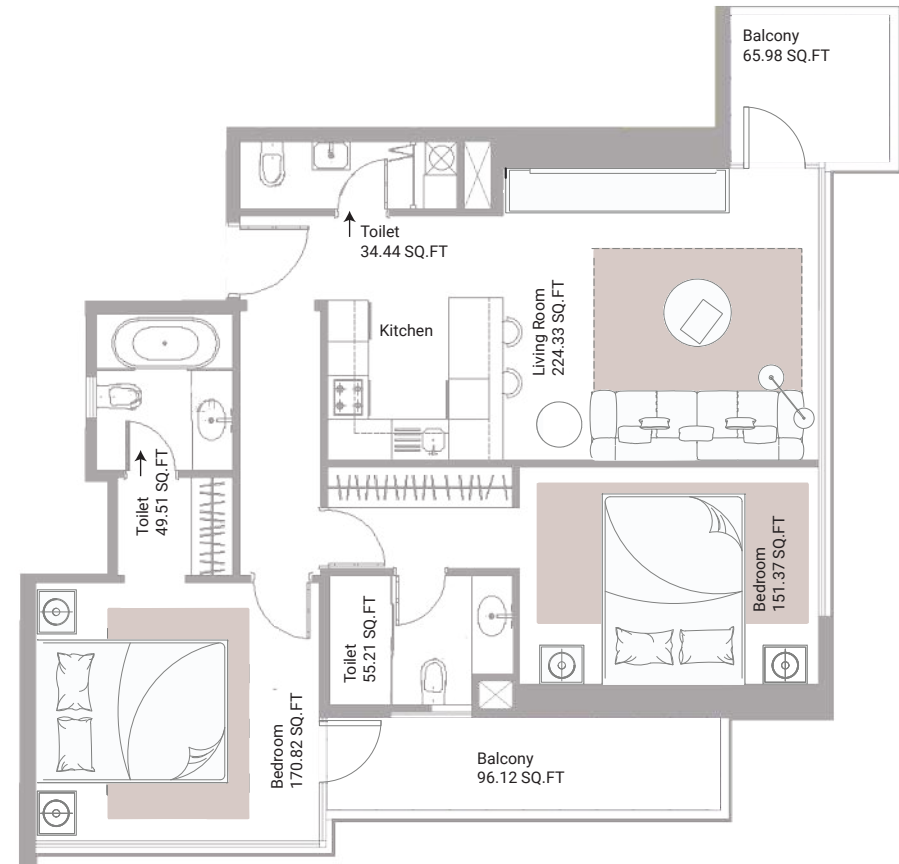
1. All materials, finishes, dimensions and drawings are approximate.
2. Information is subject to change without notice.
3. Actual suite area may vary from the stated area.
4. Drawings are not to scale.
5. The Developer reserves the right to make revisions/alterations without any liability whatsoever.

AJMAN CREEK TOWERS

APARTMENT 2 BEDROOMS

UNIT - 13

TOTAL AREA: 1561.77 SQ.FT



Disclaimer:

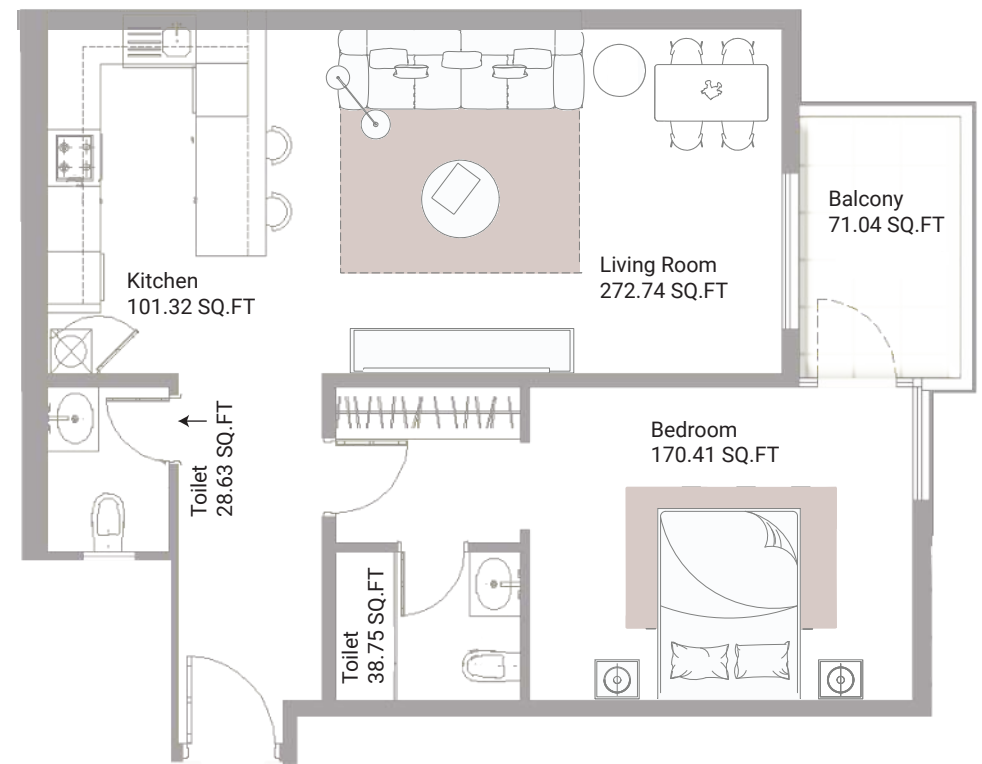
1. All materials, finishes, dimensions and drawings are approximate.
2. Information is subject to change without notice.
3. Actual suite area may vary from the stated area.
4. Drawings are not to scale.
5. The Developer reserves the right to make revisions/alterations without any liability whatsoever.

AJMAN CREEK TOWERS

APARTMENT **1 BEDROOM**

UNIT - 14

TOTAL AREA: 1127.72 SQ.FT



Disclaimer:

1. All materials, finishes, dimensions and drawings are approximate.
2. Information is subject to change without notice.
3. Actual suite area may vary from the stated area.
4. Drawings are not to scale.
5. The Developer reserves the right to make revisions/alterations without any liability whatsoever.



جي جا العقارية
PROPERTIES

Head Office:

Ground Floor, Oasis Tower 2,
Sheikh Rashid Bin Saeed Al Maktoum,
Street Ajman, UAE

Phone: +971 6 741 4478

Toll Free: 800 GJAJM (45256)

Email: info@gjproperties.ae