



08 LIFE RESIDENCES

UNIT - 101

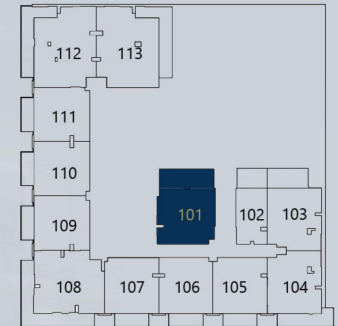
1 BEDROOM

LEVEL 1

Internal Living Area - 724.57 sq.ft
Outdoor Living Area - 236.38 sq.ft
Total Living Area - 960.95 sq.ft



KEY PLAN



KEY ELEVATION



DISCLAIMER

All measurements are indicative and are for marketing purposes only. All efforts have been made to ensure their accuracy, however these layouts are subject to change at the discretion of the developer and should not be relied upon as final. The actual area may vary from the stated area and the developer reserves the right to make the revisions/alterations, at its absolute discretion, without any liability whatsoever



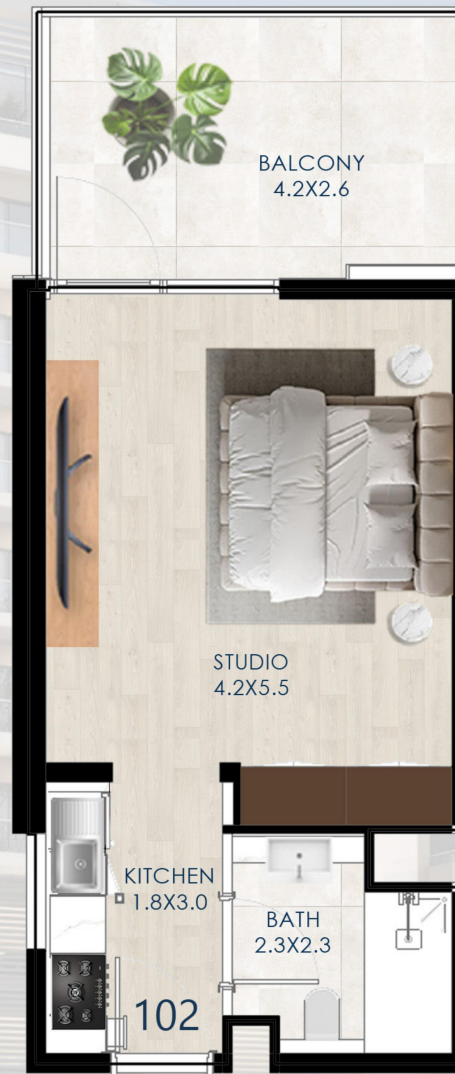
08 LIFE RESIDENCES

UNIT - 102

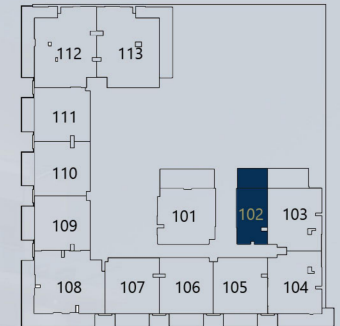
STUDIO

LEVEL 1

Internal Living Area - 388.95 sq.ft
Outdoor Living Area - 133.80 sq.ft
Total Living Area - 522.75 sq.ft



KEY PLAN



KEY ELEVATION



DISCLAIMER

All measurements are indicative and are for marketing purposes only. All efforts have been made to ensure their accuracy, however these layouts are subject to change at the discretion of the developer and should not be relied upon as final. The actual area may vary from the stated area and the developer reserves the right to make the revisions/alterations, at its absolute discretion, without any liability whatsoever



08 LIFE RESIDENCES

UNIT - 103

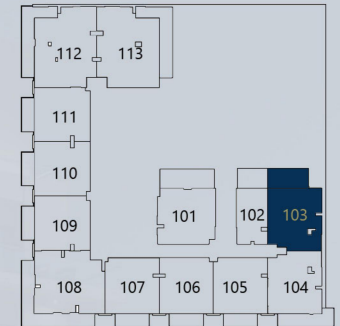
1 BEDROOM

LEVEL 1

Internal Living Area - 752.13 sq.ft
Outdoor Living Area - 181.16 sq.ft
Total Living Area - 933.28 sq.ft



KEY PLAN



KEY ELEVATION



DISCLAIMER

All measurements are indicative and are for marketing purposes only. All efforts have been made to ensure their accuracy, however these layouts are subject to change at the discretion of the developer and should not be relied upon as final. The actual area may vary from the stated area and the developer reserves the right to make the revisions/alterations, at its absolute discretion, without any liability whatsoever.

08 LIFE RESIDENCES

UNIT - 104

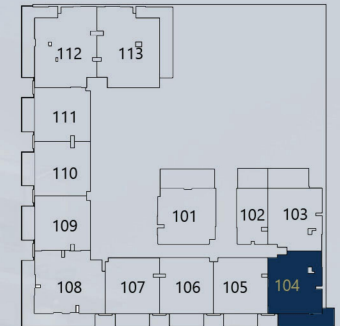
1 BEDROOM

LEVEL 1

Internal Living Area	-	752.61 Sq.ft
Outdoor Living Area	-	175.67 Sq.ft
Total Living Area	-	928.28 Sq.ft



KEY PLAN



KEY ELEVATION



DISCLAIMER

All measurements are indicative and are for marketing purposes only. All efforts have been made to ensure their accuracy, however these layouts are subject to change at the discretion of the developer and should not be relied upon as final. The actual area may vary from the stated area and the developer reserves the right to make the revisions/alterations, at its absolute discretion, without any liability whatsoever.

08 LIFE RESIDENCES

UNIT - 105

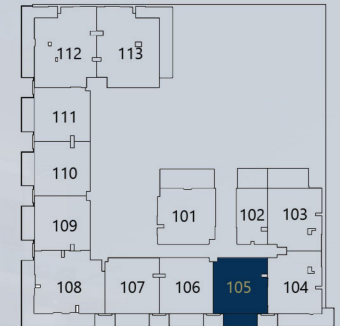
1 BEDROOM

LEVEL 1

Internal Living Area - 691.37 sq.ft
Outdoor Living Area - 97.04 sq.ft
Total Living Area - 788.40 sq.ft



KEY PLAN



KEY ELEVATION



DISCLAIMER

All measurements are indicative and are for marketing purposes only. All efforts have been made to ensure their accuracy, however these layouts are subject to change at the discretion of the developer and should not be relied upon as final. The actual area may vary from the stated area and the developer reserves the right to make the revisions/alterations, at its absolute discretion, without any liability whatsoever.



08 LIFE RESIDENCES

UNIT - 106

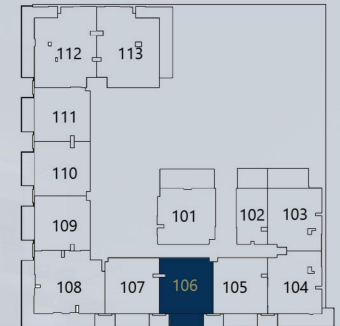
1 BEDROOM

LEVEL 1

Internal Living Area - 690.67 sq.ft
Outdoor Living Area - 97.04 sq.ft
Total Living Area - 787.70 sq.ft



KEY PLAN



KEY ELEVATION



DISCLAIMER

All measurements are indicative and are for marketing purposes only. All efforts have been made to ensure their accuracy, however these layouts are subject to change at the discretion of the developer and should not be relied upon as final. The actual area may vary from the stated area and the developer reserves the right to make the revisions/alterations, at its absolute discretion, without any liability whatsoever.



08 LIFE RESIDENCES

UNIT - 107

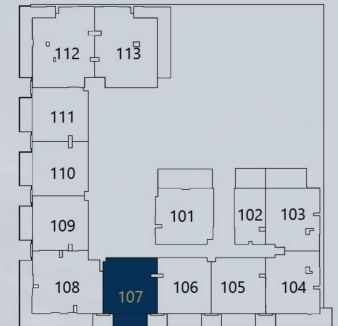
1 BEDROOM

LEVEL 1

Internal Living Area - 692.07 sq.ft
Outdoor Living Area - 97.04 sq.ft
Total Living Area - 789.10 sq.ft



KEY PLAN



KEY ELEVATION



DISCLAIMER

All measurements are indicative and are for marketing purposes only. All efforts have been made to ensure their accuracy, however these layouts are subject to change at the discretion of the developer and should not be relied upon as final. The actual area may vary from the stated area and the developer reserves the right to make the revisions/alterations, at its absolute discretion, without any liability whatsoever.

08 LIFE RESIDENCES

UNIT - 108

2 BEDROOM

LEVEL 1

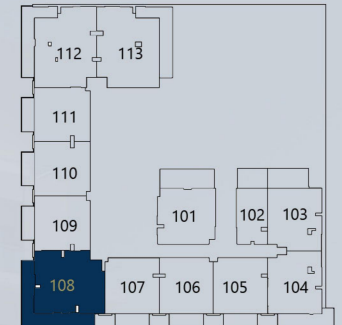
Internal Living Area - 979.78 sq.ft

Outdoor Living Area - 364.30 sq.ft

Total Living Area - 1344.09 sq.ft



KEY PLAN



KEY ELEVATION



DISCLAIMER

All measurements are indicative and are for marketing purposes only. All efforts have been made to ensure their accuracy, however these layouts are subject to change at the discretion of the developer and should not be relied upon as final. The actual area may vary from the stated area and the developer reserves the right to make the revisions/alterations, at its absolute discretion, without any liability whatsoever.

08 LIFE RESIDENCES

UNIT - 109

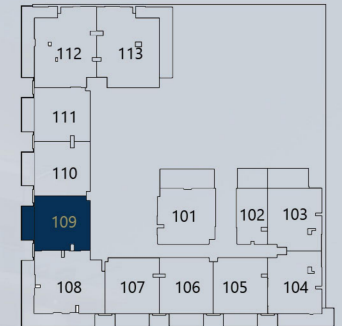
1 BEDROOM

LEVEL 1

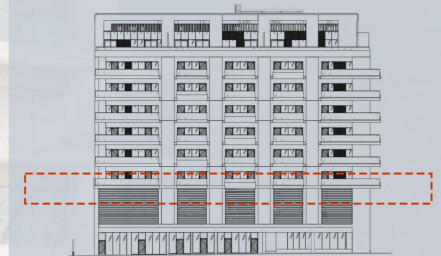
Internal Living Area - 691.90 sq.ft
Outdoor Living Area - 97.04 sq.ft
Total Living Area - 788.94 sq.ft



KEY PLAN



KEY ELEVATION



DISCLAIMER

All measurements are indicative and are for marketing purposes only. All efforts have been made to ensure their accuracy, however these layouts are subject to change at the discretion of the developer and should not be relied upon as final. The actual area may vary from the stated area and the developer reserves the right to make the revisions/alterations, at its absolute discretion, without any liability whatsoever.



08 LIFE RESIDENCES

UNIT - 110

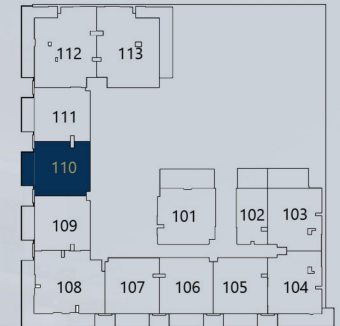
1 BEDROOM

LEVEL 1

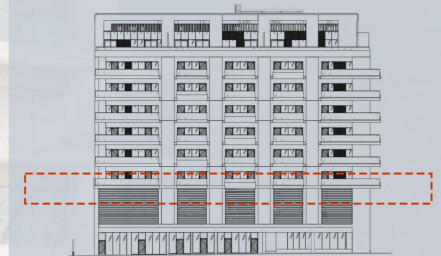
Internal Living Area - 690.67 sq.ft
Outdoor Living Area - 95.74 sq.ft
Total Living Area - 786.41 sq.ft



KEY PLAN



KEY ELEVATION



DISCLAIMER

All measurements are indicative and are for marketing purposes only. All efforts have been made to ensure their accuracy, however these layouts are subject to change at the discretion of the developer and should not be relied upon as final. The actual area may vary from the stated area and the developer reserves the right to make the revisions/alterations, at its absolute discretion, without any liability whatsoever.

08 LIFE RESIDENCES

UNIT - 111

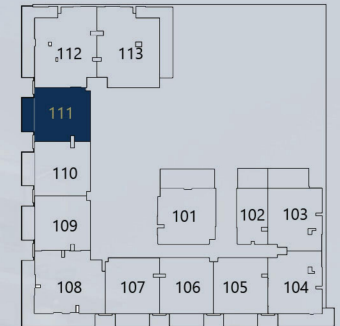
1 BEDROOM

LEVEL 1

Internal Living Area	-	692.60 Sq.ft
Outdoor Living Area	-	97.04 Sq.ft
Total Living Area	-	789.64 Sq.ft



KEY PLAN



KEY ELEVATION



DISCLAIMER

All measurements are indicative and are for marketing purposes only. All efforts have been made to ensure their accuracy, however these layouts are subject to change at the discretion of the developer and should not be relied upon as final. The actual area may vary from the stated area and the developer reserves the right to make the revisions/alterations, at its absolute discretion, without any liability whatsoever.



08 LIFE RESIDENCES

UNIT - 112

2 BEDROOM

LEVEL 1

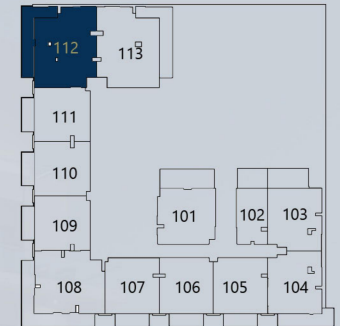
Internal Living Area - 1066.81 sq.ft

Outdoor Living Area - 261.51 sq.ft

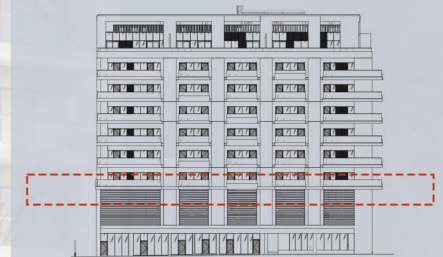
Total Living Area - 1328.32 sq.ft



KEY PLAN



KEY ELEVATION



DISCLAIMER

All measurements are indicative and are for marketing purposes only. All efforts have been made to ensure their accuracy, however these layouts are subject to change at the discretion of the developer and should not be relied upon as final. The actual area may vary from the stated area and the developer reserves the right to make the revisions/alterations, at its absolute discretion, without any liability whatsoever.



DENIZ
DENIZ REAL ESTATE

08 LIFE RESIDENCES

UNIT - 113

2 BEDROOM

LEVEL 1

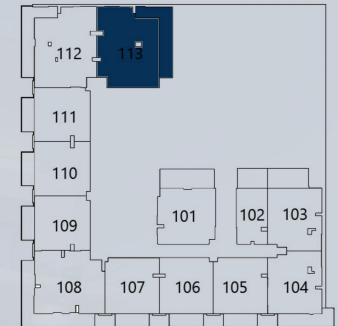
Internal Living Area - 1067.94 sq.ft

Outdoor Living Area - 265.98 sq.ft

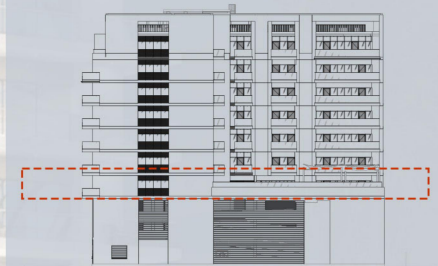
Total Living Area - 1333.92 sq.ft



KEY PLAN



KEY ELEVATION



DISCLAIMER

All measurements are indicative and are for marketing purposes only. All efforts have been made to ensure their accuracy, however these layouts are subject to change at the discretion of the developer and should not be relied upon as final. The actual area may vary from the stated area and the developer reserves the right to make the revisions/alterations, at its absolute discretion, without any liability whatsoever