

APARTMENT PLANS

ملقا

DUBAI

CHRISTIE'S  
INTERNATIONAL REAL ESTATE

— DUBAI —

# PAYMENT PLAN

**10%**

Booking

**10% + 4% DLD**

SPA Signing

**10%**

90 days from SPA

**10%**

120 days from SPA

**10%**

20% construction  
completion

**10%**

40% construction  
completion

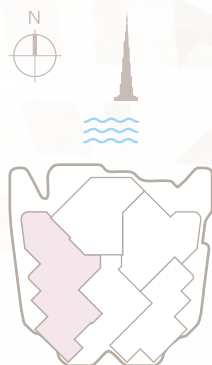
**40%**

On completion

# APARTMENT 201

3 Bedroom | Type A

Internal area:	346.3 m <sup>2</sup>	3,728 ft <sup>2</sup>
Balcony:	134.18 m <sup>2</sup>	1,444 ft <sup>2</sup>
Total area:	480.48 m <sup>2</sup>	5,172 ft <sup>2</sup>



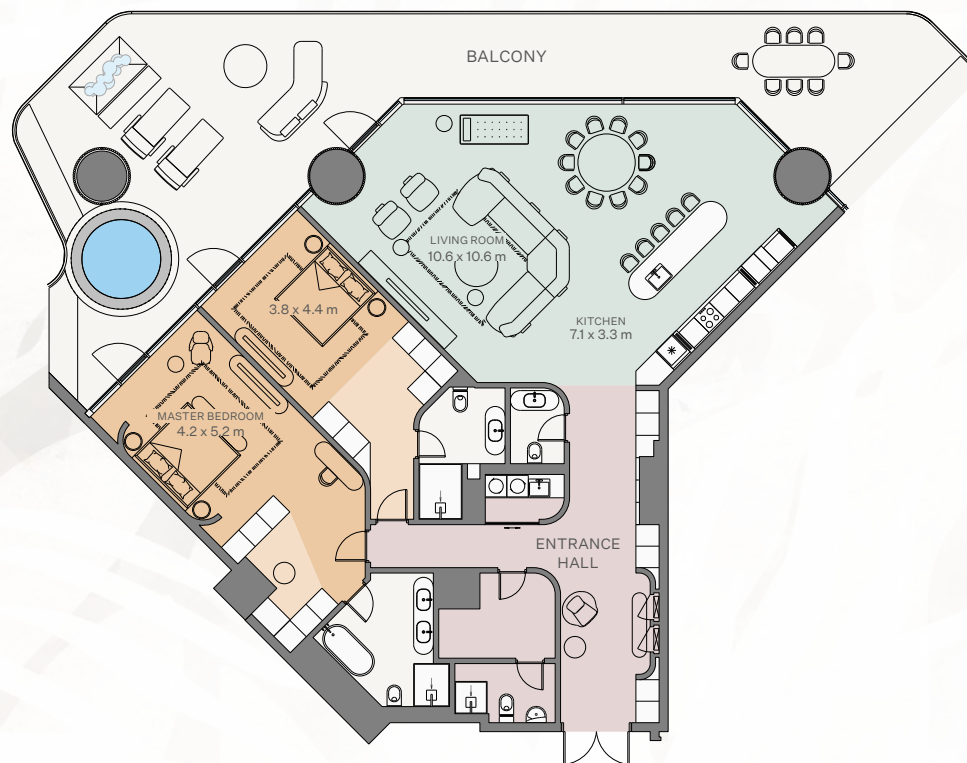
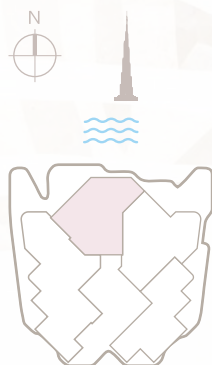
DISCLAIMER 1. All dimensions are in imperial and metric, and measured from finish to finish excluding construction tolerances. 2. All materials, dimensions and drawings are approximate only. 3. Information is subject to change without notice, at developer's absolute discretion. 4. Actual area may vary from the stated area. 5. Drawings not to scale. 6. All images used are for illustrative purposes only and do not represent the actual size, features, specifications, fittings and furnishing. 7. The developer reserves, the right to make revisions or alterations, at its absolute discretion, without any liability whatsoever.



## APARTMENT 202

2 Bedroom | Type A

Internal area:	228.67 m <sup>2</sup>	2,461 ft <sup>2</sup>
Balcony:	114.41 m <sup>2</sup>	1,232 ft <sup>2</sup>
Total area:	343.08 m <sup>2</sup>	3,693 ft <sup>2</sup>

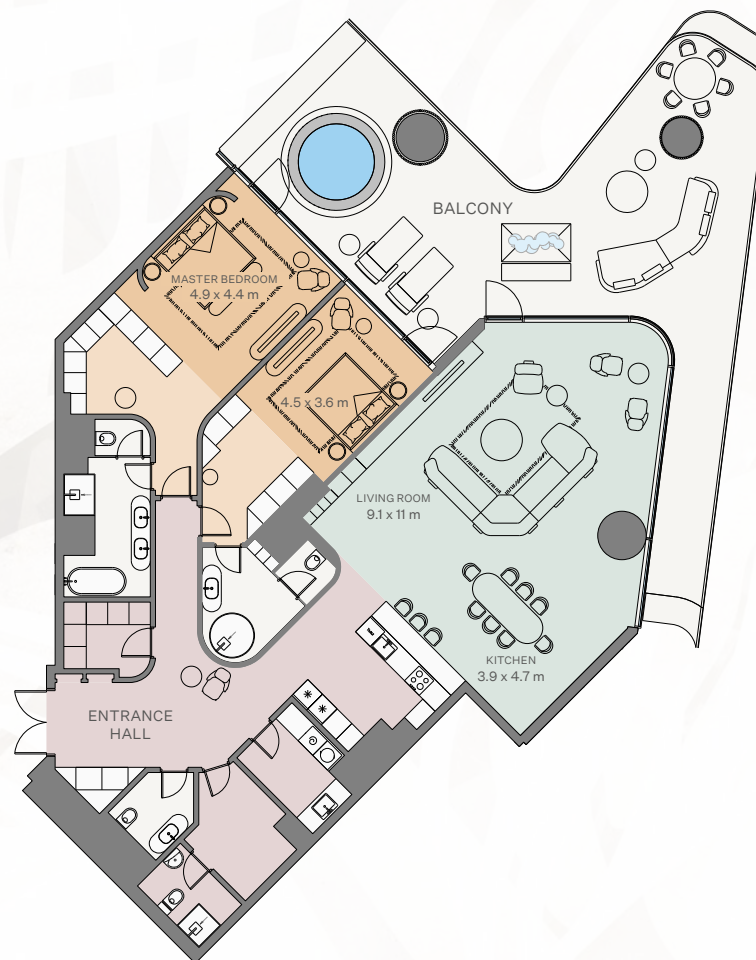


DISCLAIMER 1. All dimensions are in imperial and metric, and measured from finish to finish excluding construction tolerances. 2. All materials, dimensions and drawings are approximate only. 3. Information is subject to change without notice, at developer's absolute discretion. 4. Actual area may vary from the stated area. 5. Drawings not to scale. 6. All images used are for illustrative purposes only and do not represent the actual size, features, specifications, fittings and furnishing. 7. The developer reserves, the right to make revisions or alterations, at its absolute discretion, without any liability whatsoever.

## APARTMENT 203

2 Bedroom | Type B

Internal area:	247.02 m <sup>2</sup>	2,659 ft <sup>2</sup>
Balcony:	101.97 m <sup>2</sup>	1,097 ft <sup>2</sup>
Total area:	348.99 m <sup>2</sup>	3,756 ft <sup>2</sup>

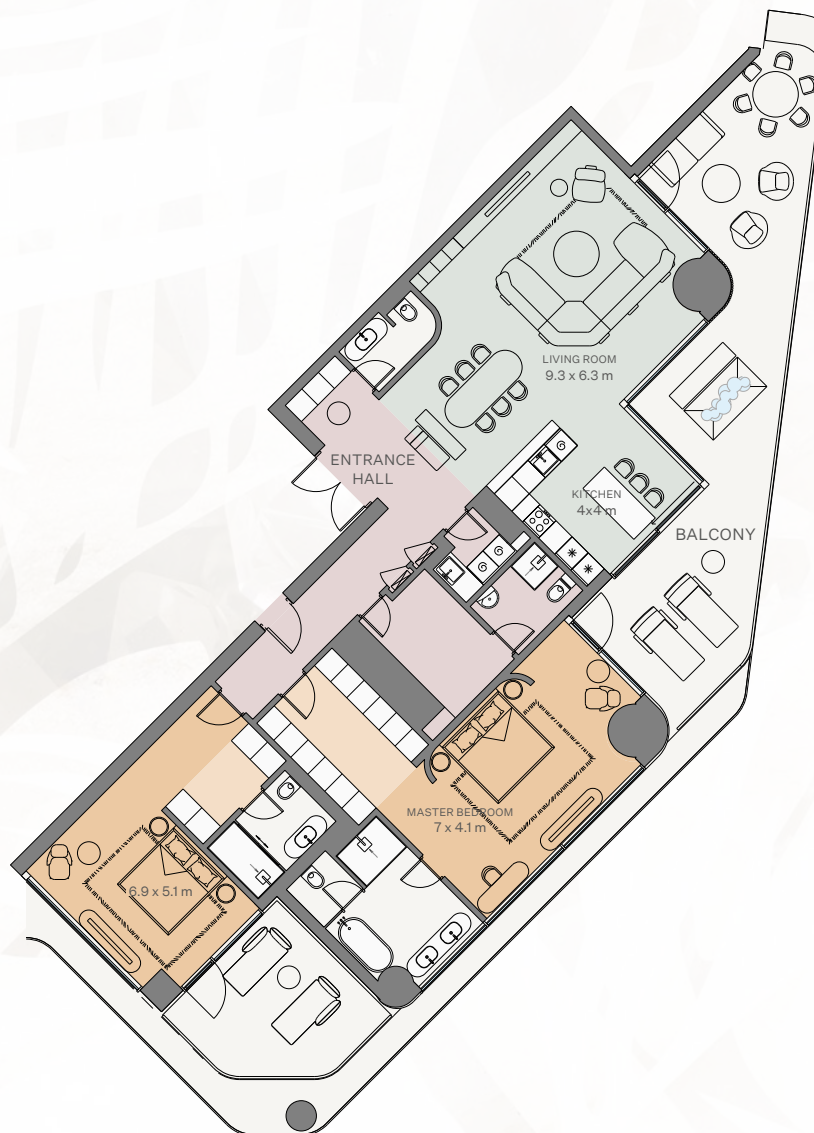


DISCLAIMER 1. All dimensions are in imperial and metric, and measured from finish to finish excluding construction tolerances. 2. All materials, dimensions and drawings are approximate only. 3. Information is subject to change without notice, at developer's absolute discretion. 4. Actual area may vary from the stated area. 5. Drawings not to scale. 6. All images used are for illustrative purposes only and do not represent the actual size, features, specifications, fittings and furnishing. 7. The developer reserves, the right to make revisions or alterations, at its absolute discretion, without any liability whatsoever.

# APARTMENT 204

2 Bedroom | Type C

Internal area:	203.41 m <sup>2</sup>	2,189 ft <sup>2</sup>
Balcony:	73.54 m <sup>2</sup>	792 ft <sup>2</sup>
Total area:	276.95 m <sup>2</sup>	2,981 ft <sup>2</sup>

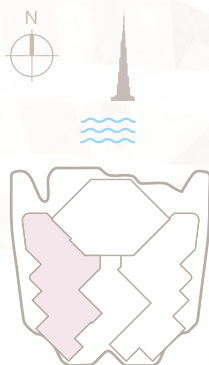


DISCLAIMER 1. All dimensions are in imperial and metric, and measured from finish to finish excluding construction tolerances. 2. All materials, dimensions and drawings are approximate only. 3. Information is subject to change without notice, at developer's absolute discretion. 4. Actual area may vary from the stated area. 5. Drawings not to scale. 6. All images used are for illustrative purposes only and do not represent the actual size, features, specifications, fittings and furnishing. 7. The developer reserves, the right to make revisions or alterations, at its absolute discretion, without any liability whatsoever.

# APARTMENT 301

3 Bedroom | Type A

Internal area:	346.28 m <sup>2</sup>	3,727 ft <sup>2</sup>
Balcony:	139.5 m <sup>2</sup>	1,502 ft <sup>2</sup>
Total area:	485.78 m <sup>2</sup>	5,229 ft <sup>2</sup>



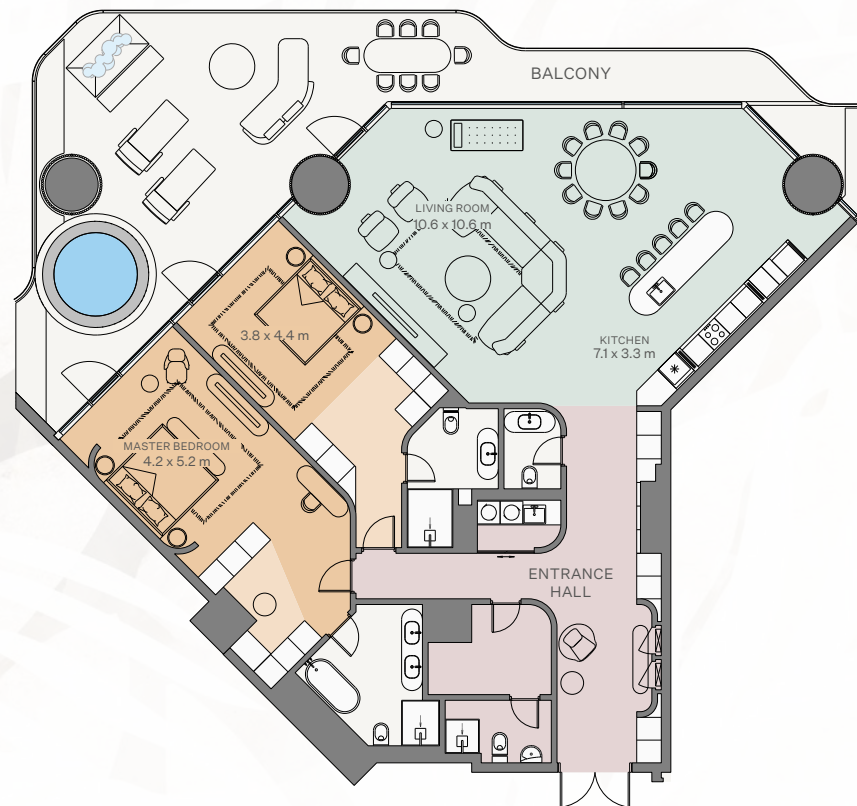
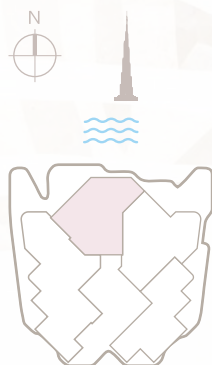
DISCLAIMER 1. All dimensions are in imperial and metric, and measured from finish to finish excluding construction tolerances. 2. All materials, dimensions and drawings are approximate only. 3. Information is subject to change without notice, at developer's absolute discretion. 4. Actual area may vary from the stated area. 5. Drawings not to scale. 6. All images used are for illustrative purposes only and do not represent the actual size, features, specifications, fittings and furnishing. 7. The developer reserves, the right to make revisions or alterations, at its absolute discretion, without any liability whatsoever.



## APARTMENT 302

2 Bedroom | Type A

Internal area:	228.67 m <sup>2</sup>	2,461 ft <sup>2</sup>
Balcony:	83.12 m <sup>2</sup>	895 ft <sup>2</sup>
Total area:	311.79 m <sup>2</sup>	3,356 ft <sup>2</sup>



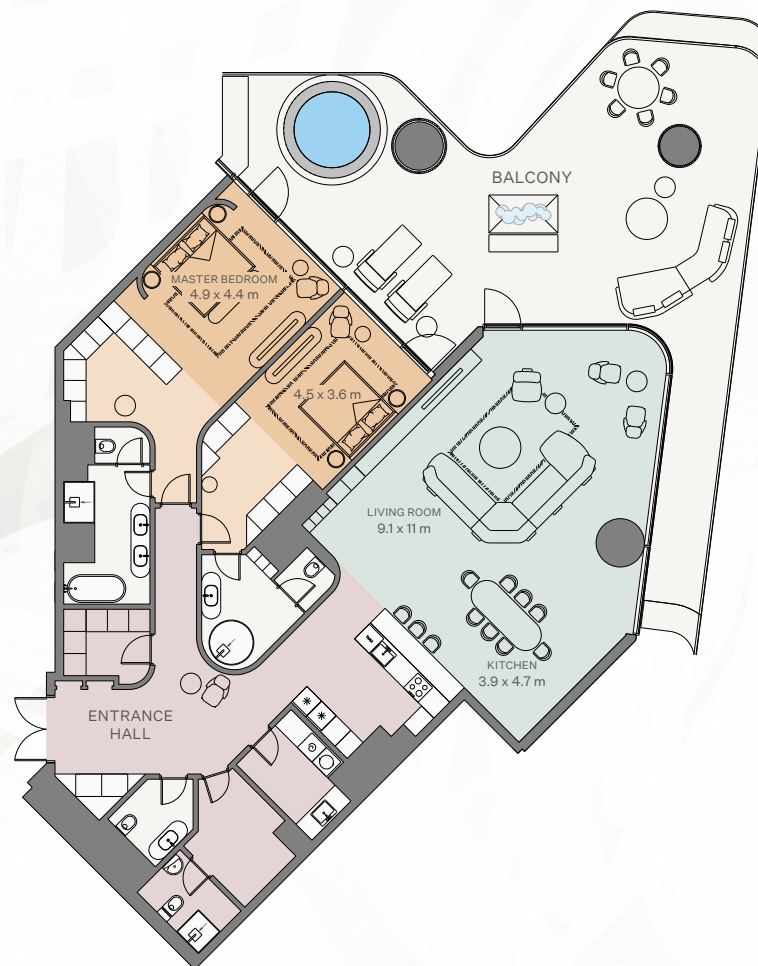
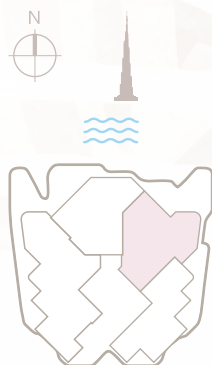
DISCLAIMER 1. All dimensions are in imperial and metric, and measured from finish to finish excluding construction tolerances. 2. All materials, dimensions and drawings are approximate only. 3. Information is subject to change without notice, at developer's absolute discretion. 4. Actual area may vary from the stated area. 5. Drawings not to scale. 6. All images used are for illustrative purposes only and do not represent the actual size, features, specifications, fittings and furnishing. 7. The developer reserves, the right to make revisions or alterations, at its absolute discretion, without any liability whatsoever.



## APARTMENT 303

2 Bedroom | Type B

Internal area:	247.02 m <sup>2</sup>	2,659 ft <sup>2</sup>
Balcony:	118.93 m <sup>2</sup>	1,280 ft <sup>2</sup>
Total area:	365.95 m <sup>2</sup>	3,939 ft <sup>2</sup>

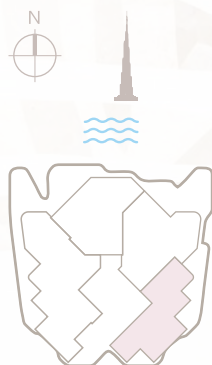


DISCLAIMER 1. All dimensions are in imperial and metric, and measured from finish to finish excluding construction tolerances. 2. All materials, dimensions and drawings are approximate only. 3. Information is subject to change without notice, at developer's absolute discretion. 4. Actual area may vary from the stated area. 5. Drawings not to scale. 6. All images used are for illustrative purposes only and do not represent the actual size, features, specifications, fittings and furnishing. 7. The developer reserves, the right to make revisions or alterations, at its absolute discretion, without any liability whatsoever.

# APARTMENT 304

2 Bedroom | Type C

Internal area:	203.38 m <sup>2</sup>	2,189 ft <sup>2</sup>
Balcony:	73.57 m <sup>2</sup>	792 ft <sup>2</sup>
Total area:	276.95 m <sup>2</sup>	2,981 ft <sup>2</sup>

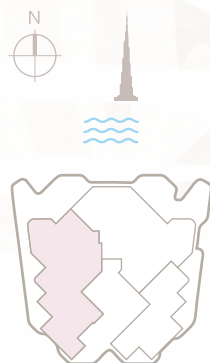


DISCLAIMER 1. All dimensions are in imperial and metric, and measured from finish to finish excluding construction tolerances. 2. All materials, dimensions and drawings are approximate only. 3. Information is subject to change without notice, at developer's absolute discretion. 4. Actual area may vary from the stated area. 5. Drawings not to scale. 6. All images used are for illustrative purposes only and do not represent the actual size, features, specifications, fittings and furnishing. 7. The developer reserves, the right to make revisions or alterations, at its absolute discretion, without any liability whatsoever.

# APARTMENT 401

4 Bedroom | Type A

Internal area:	411.63 m <sup>2</sup>	4,431 ft <sup>2</sup>
Balcony:	164.02 m <sup>2</sup>	1,765 ft <sup>2</sup>
Total area:	575.65 m <sup>2</sup>	6,196 ft <sup>2</sup>



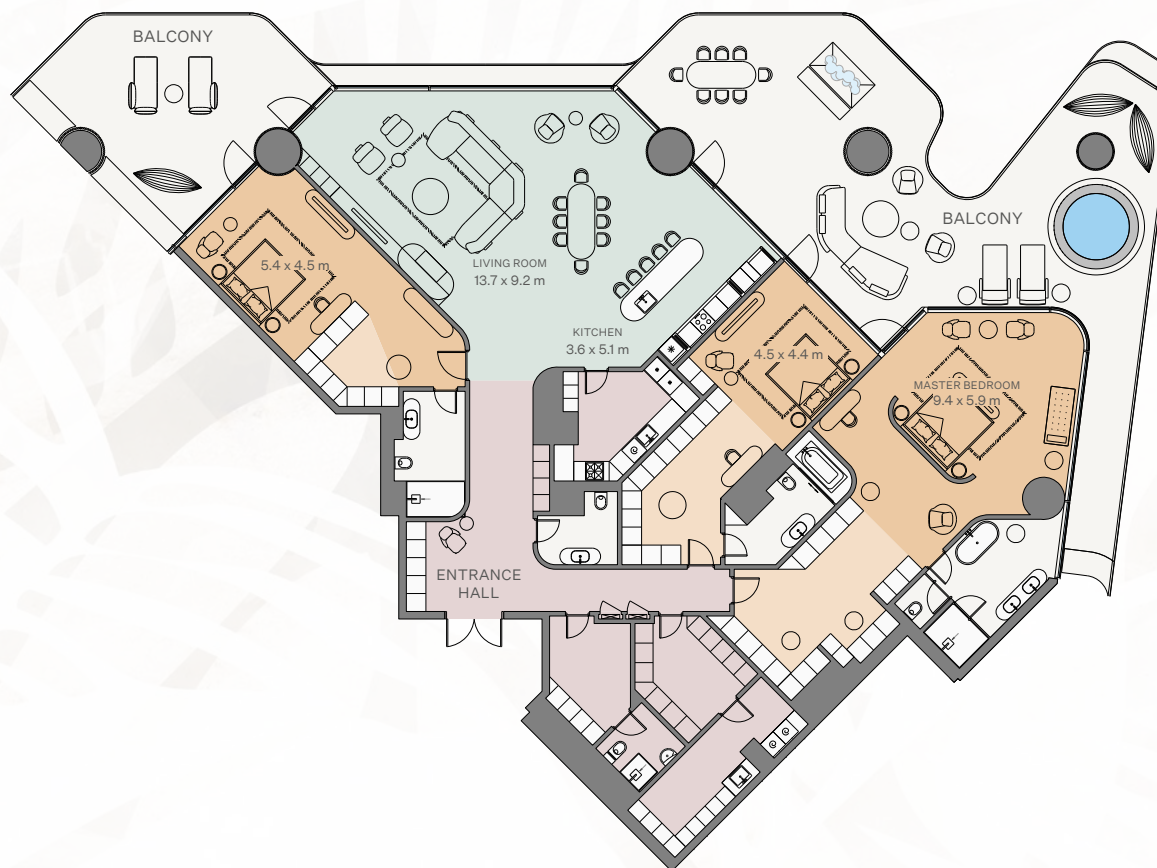
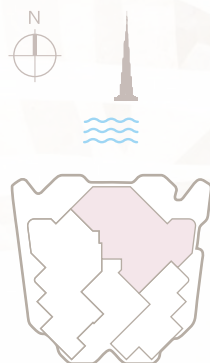
DISCLAIMER 1. All dimensions are in imperial and metric, and measured from finish to finish excluding construction tolerances. 2. All materials, dimensions and drawings are approximate only. 3. Information is subject to change without notice, at developer's absolute discretion. 4. Actual area may vary from the stated area. 5. Drawings not to scale. 6. All images used are for illustrative purposes only and do not represent the actual size, features, specifications, fittings and furnishing. 7. The developer reserves, the right to make revisions or alterations, at its absolute discretion, without any liability whatsoever.



## APARTMENT 402

3 Bedroom | Type D

Internal area:	410.71 m <sup>2</sup>	4,421 ft <sup>2</sup>
Balcony:	178.99 m <sup>2</sup>	1,926 ft <sup>2</sup>
Total area:	589.70 m <sup>2</sup>	6,347 ft <sup>2</sup>

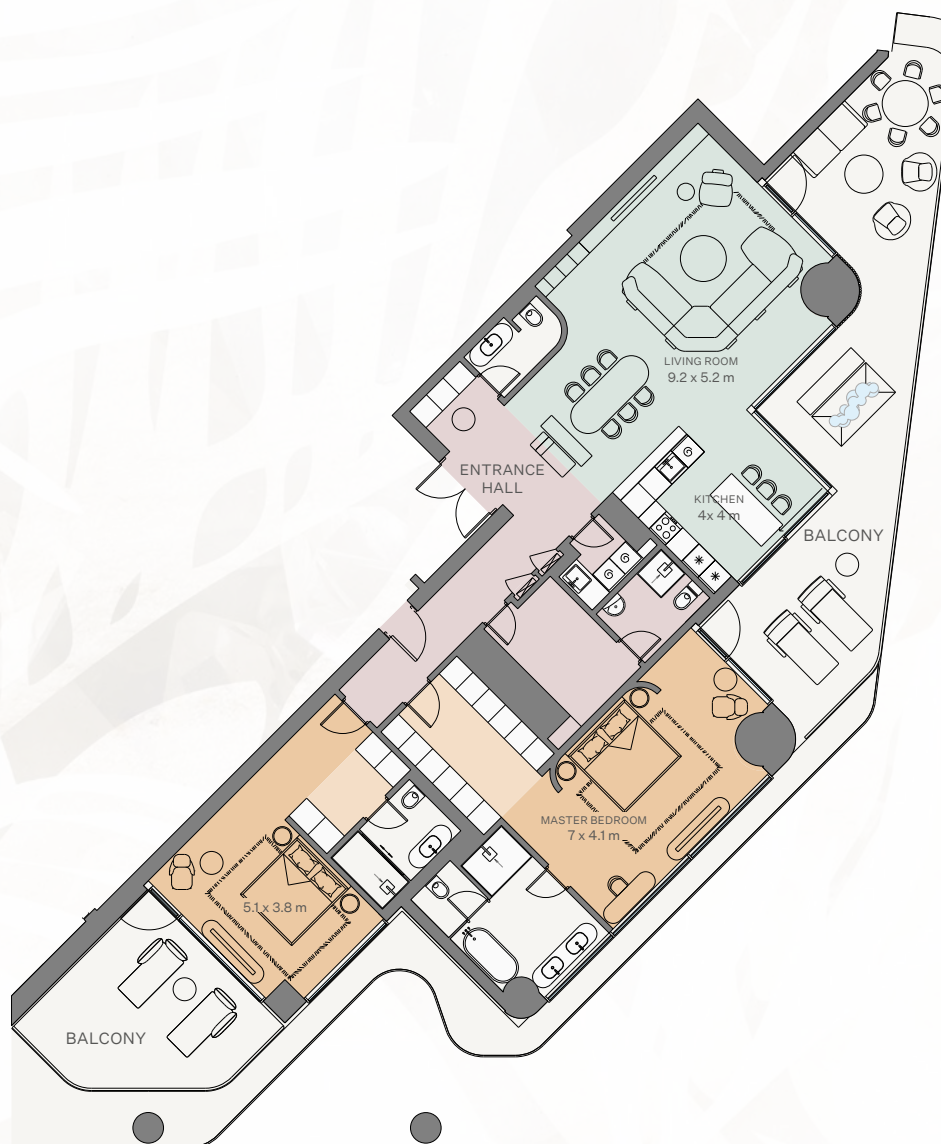
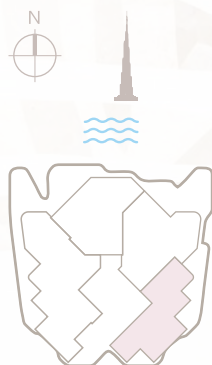


DISCLAIMER 1. All dimensions are in imperial and metric, and measured from finish to finish excluding construction tolerances. 2. All materials, dimensions and drawings are approximate only. 3. Information is subject to change without notice, at developer's absolute discretion. 4. Actual area may vary from the stated area. 5. Drawings not to scale. 6. All images used are for illustrative purposes only and do not represent the actual size, features, specifications, fittings and furnishing. 7. The developer reserves, the right to make revisions or alterations, at its absolute discretion, without any liability whatsoever.

# APARTMENT 403

2 Bedroom | Type C

Internal area:	203.26 m <sup>2</sup>	2,188 ft <sup>2</sup>
Balcony:	79.3 m <sup>2</sup>	853 ft <sup>2</sup>
Total area:	282.56 m <sup>2</sup>	3,041 ft <sup>2</sup>

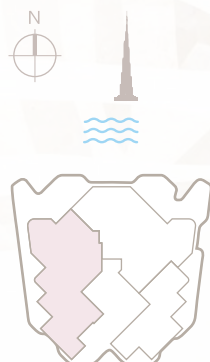


DISCLAIMER 1. All dimensions are in imperial and metric, and measured from finish to finish excluding construction tolerances. 2. All materials, dimensions and drawings are approximate only. 3. Information is subject to change without notice, at developer's absolute discretion. 4. Actual area may vary from the stated area. 5. Drawings not to scale. 6. All images used are for illustrative purposes only and do not represent the actual size, features, specifications, fittings and furnishing. 7. The developer reserves, the right to make revisions or alterations, at its absolute discretion, without any liability whatsoever.

# APARTMENT 501

3 Bedroom | Type A

Internal area:	411.69 m <sup>2</sup>	4,431 ft <sup>2</sup>
Balcony:	163.95 m <sup>2</sup>	1,765 ft <sup>2</sup>
Total area:	575.64 m <sup>2</sup>	6,196 ft <sup>2</sup>



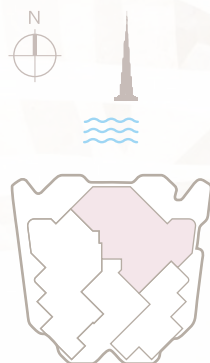
DISCLAIMER 1. All dimensions are in imperial and metric, and measured from finish to finish excluding construction tolerances. 2. All materials, dimensions and drawings are approximate only. 3. Information is subject to change without notice, at developer's absolute discretion. 4. Actual area may vary from the stated area. 5. Drawings not to scale. 6. All images used are for illustrative purposes only and do not represent the actual size, features, specifications, fittings and furnishing. 7. The developer reserves, the right to make revisions or alterations, at its absolute discretion, without any liability whatsoever.



## APARTMENT 502

3 Bedroom | Type D

Internal area:	410.7 m <sup>2</sup>	4,421 ft <sup>2</sup>
Balcony:	200.13 m <sup>2</sup>	2,154 ft <sup>2</sup>
Total area:	610.83 m <sup>2</sup>	6,575 ft <sup>2</sup>

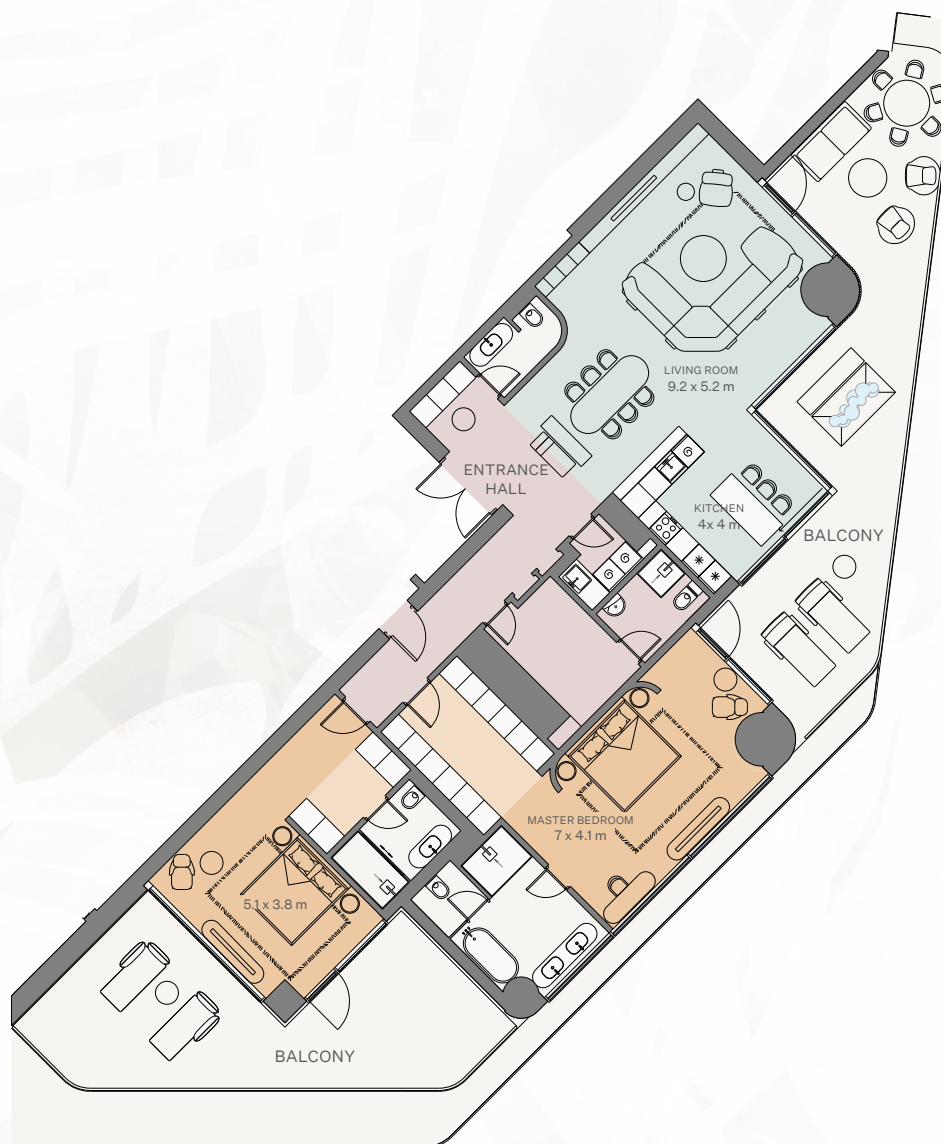
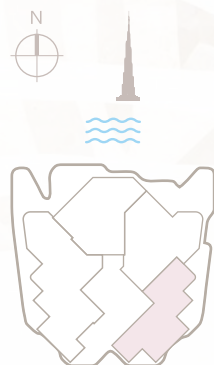
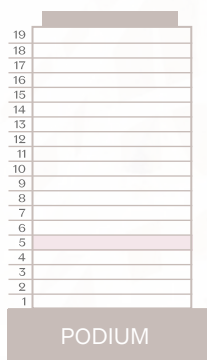


DISCLAIMER 1. All dimensions are in imperial and metric, and measured from finish to finish excluding construction tolerances. 2. All materials, dimensions and drawings are approximate only. 3. Information is subject to change without notice, at developer's absolute discretion. 4. Actual area may vary from the stated area. 5. Drawings not to scale. 6. All images used are for illustrative purposes only and do not represent the actual size, features, specifications, fittings and furnishing. 7. The developer reserves, the right to make revisions or alterations, at its absolute discretion, without any liability whatsoever.

# APARTMENT 503

2 Bedroom | Type C

Internal area:	203.25 m <sup>2</sup>	2,188 ft <sup>2</sup>
Balcony:	99.76 m <sup>2</sup>	1,074 ft <sup>2</sup>
Total area:	303.01 m <sup>2</sup>	3,262 ft <sup>2</sup>

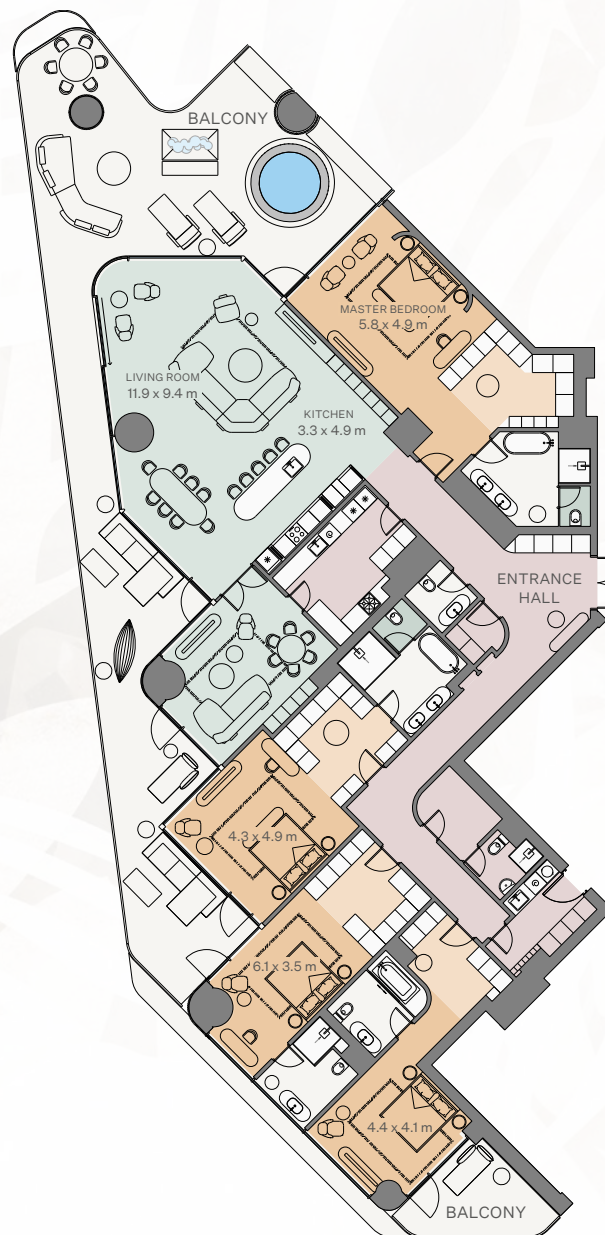
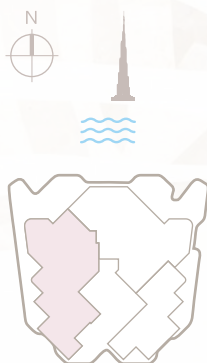
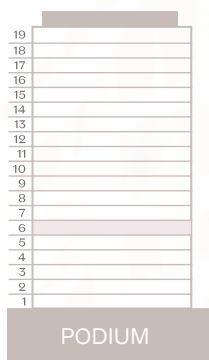


DISCLAIMER 1. All dimensions are in imperial and metric, and measured from finish to finish excluding construction tolerances. 2. All materials, dimensions and drawings are approximate only. 3. Information is subject to change without notice, at developer's absolute discretion. 4. Actual area may vary from the stated area. 5. Drawings not to scale. 6. All images used are for illustrative purposes only and do not represent the actual size, features, specifications, fittings and furnishing. 7. The developer reserves, the right to make revisions or alterations, at its absolute discretion, without any liability whatsoever.

# APARTMENT 601

4 Bedroom | Type A

Internal area:	411.67 m <sup>2</sup>	4,431 ft <sup>2</sup>
Balcony:	160.81 m <sup>2</sup>	1,731 ft <sup>2</sup>
Total area:	572.48 m <sup>2</sup>	6,162 ft <sup>2</sup>



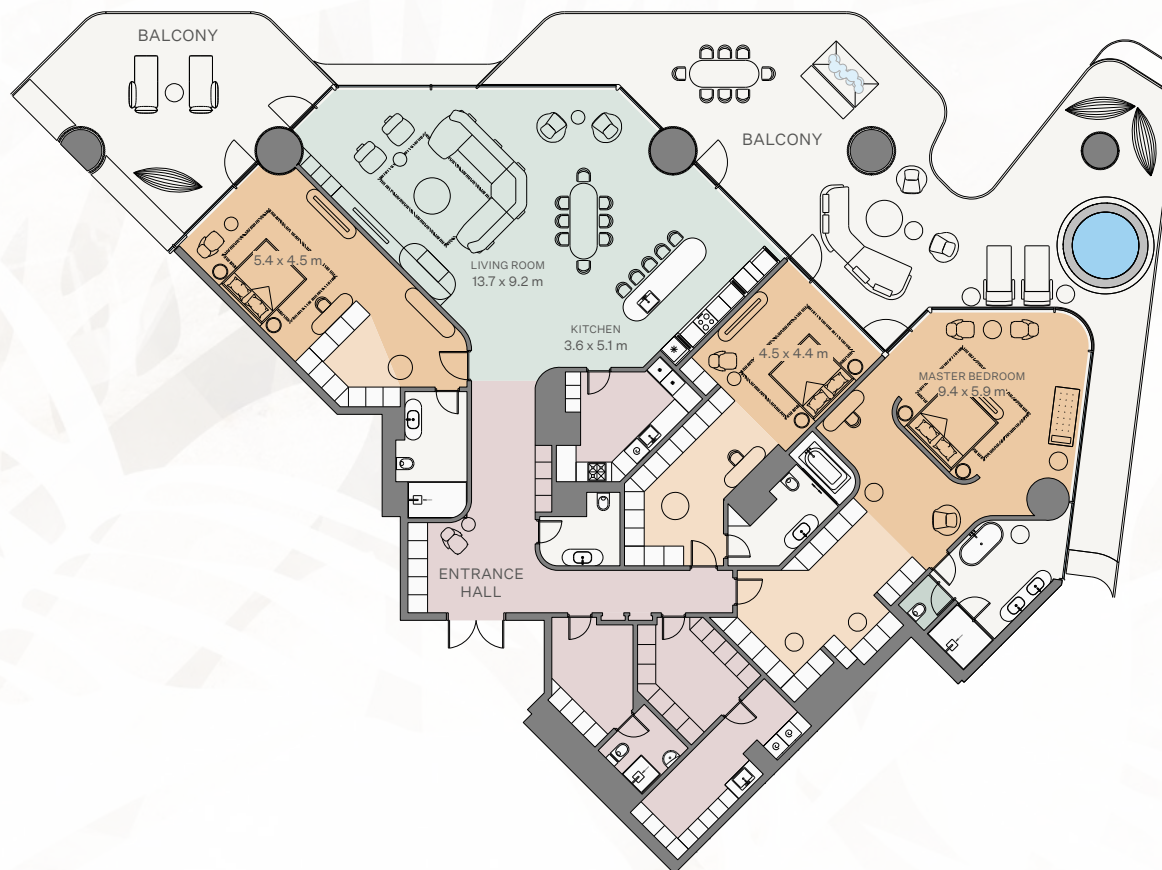
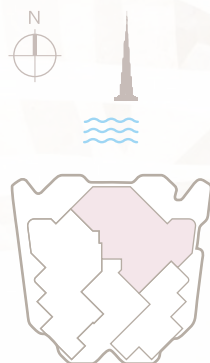
DISCLAIMER 1. All dimensions are in imperial and metric, and measured from finish to finish excluding construction tolerances. 2. All materials, dimensions and drawings are approximate only. 3. Information is subject to change without notice, at developer's absolute discretion. 4. Actual area may vary from the stated area. 5. Drawings not to scale. 6. All images used are for illustrative purposes only and do not represent the actual size, features, specifications, fittings and furnishing. 7. The developer reserves, the right to make revisions or alterations, at its absolute discretion, without any liability whatsoever.



## APARTMENT 602

3 Bedroom | Type D

Internal area:	410.71 m <sup>2</sup>	4,421 ft <sup>2</sup>
Balcony:	189.97 m <sup>2</sup>	2,045 ft <sup>2</sup>
Total area:	600.68 m <sup>2</sup>	6,466 ft <sup>2</sup>

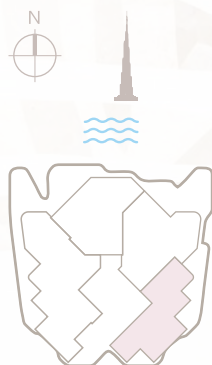
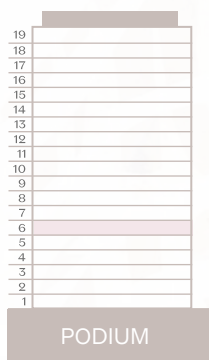


DISCLAIMER 1. All dimensions are in imperial and metric, and measured from finish to finish excluding construction tolerances. 2. All materials, dimensions and drawings are approximate only. 3. Information is subject to change without notice, at developer's absolute discretion. 4. Actual area may vary from the stated area. 5. Drawings not to scale. 6. All images used are for illustrative purposes only and do not represent the actual size, features, specifications, fittings and furnishing. 7. The developer reserves, the right to make revisions or alterations, at its absolute discretion, without any liability whatsoever.

## APARTMENT 603

3 Bedroom | Type C

Internal area:	203.24 m <sup>2</sup>	2,188 ft <sup>2</sup>
Balcony:	75.12 m <sup>2</sup>	808 ft <sup>2</sup>
Total area:	278.36 m <sup>2</sup>	2,996 ft <sup>2</sup>

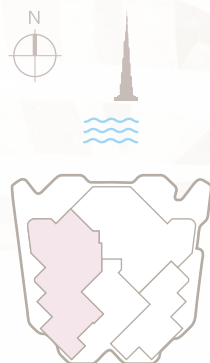
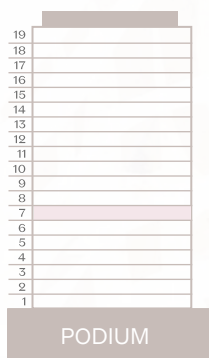


DISCLAIMER 1. All dimensions are in imperial and metric, and measured from finish to finish excluding construction tolerances. 2. All materials, dimensions and drawings are approximate only. 3. Information is subject to change without notice, at developer's absolute discretion. 4. Actual area may vary from the stated area. 5. Drawings not to scale. 6. All images used are for illustrative purposes only and do not represent the actual size, features, specifications, fittings and furnishing. 7. The developer reserves, the right to make revisions or alterations, at its absolute discretion, without any liability whatsoever.

# APARTMENT 701

4 Bedroom | Type A

Internal area:	411.7 m <sup>2</sup>	4,432 ft <sup>2</sup>
Balcony:	159.82 m <sup>2</sup>	1,720 ft <sup>2</sup>
Total area:	571.52 m <sup>2</sup>	6,152 ft <sup>2</sup>



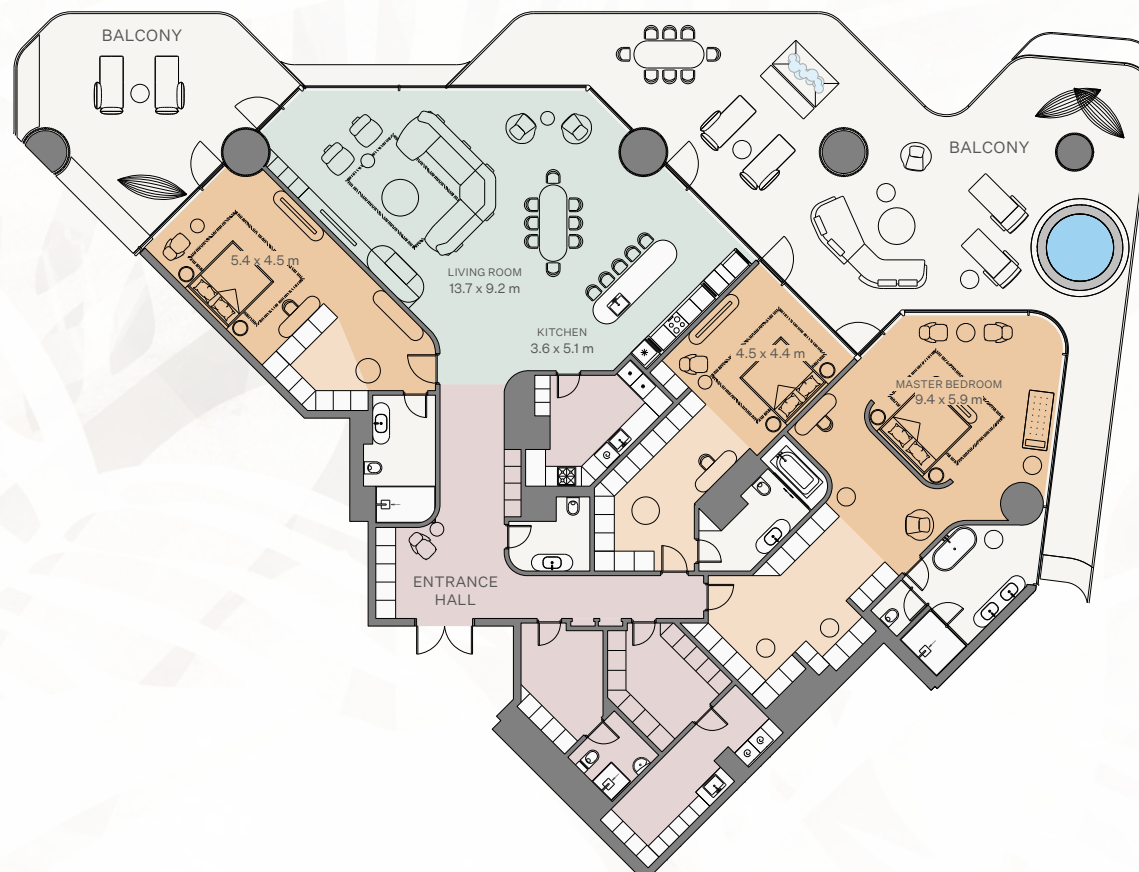
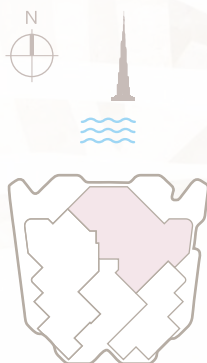
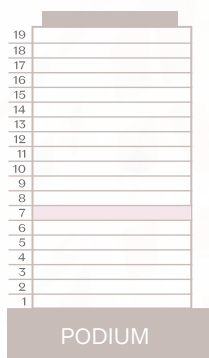
DISCLAIMER 1. All dimensions are in imperial and metric, and measured from finish to finish excluding construction tolerances. 2. All materials, dimensions and drawings are approximate only. 3. Information is subject to change without notice, at developer's absolute discretion. 4. Actual area may vary from the stated area. 5. Drawings not to scale. 6. All images used are for illustrative purposes only and do not represent the actual size, features, specifications, fittings and furnishing. 7. The developer reserves, the right to make revisions or alterations, at its absolute discretion, without any liability whatsoever.



## APARTMENT 702

3 Bedroom | Type D

Internal area:	410.71 m <sup>2</sup>	4,421 ft <sup>2</sup>
Balcony:	201.02 m <sup>2</sup>	2,164 ft <sup>2</sup>
Total area:	611.73 m <sup>2</sup>	6,585 ft <sup>2</sup>

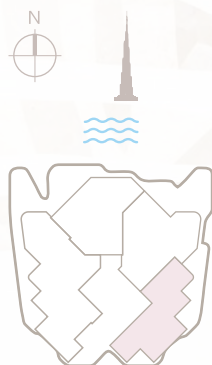
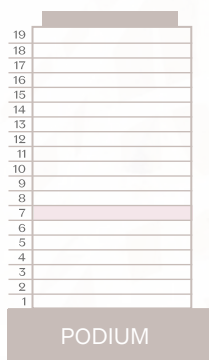


DISCLAIMER 1. All dimensions are in imperial and metric, and measured from finish to finish excluding construction tolerances. 2. All materials, dimensions and drawings are approximate only. 3. Information is subject to change without notice, at developer's absolute discretion. 4. Actual area may vary from the stated area. 5. Drawings not to scale. 6. All images used are for illustrative purposes only and do not represent the actual size, features, specifications, fittings and furnishing. 7. The developer reserves, the right to make revisions or alterations, at its absolute discretion, without any liability whatsoever.

## APARTMENT 703

2 Bedroom | Type C

Internal area:	203.25 m <sup>2</sup>	2,188 ft <sup>2</sup>
Balcony:	70.38 m <sup>2</sup>	757 ft <sup>2</sup>
Total area:	273.63 m <sup>2</sup>	2,945 ft <sup>2</sup>

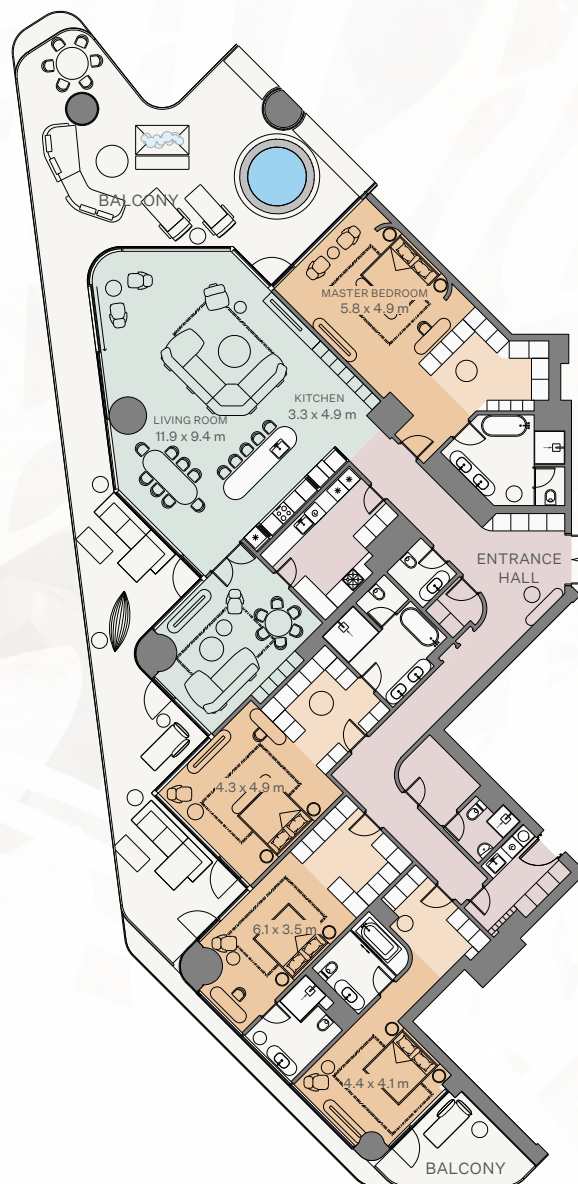
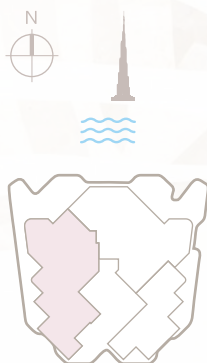
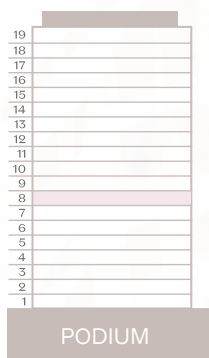


DISCLAIMER 1. All dimensions are in imperial and metric, and measured from finish to finish excluding construction tolerances. 2. All materials, dimensions and drawings are approximate only. 3. Information is subject to change without notice, at developer's absolute discretion. 4. Actual area may vary from the stated area. 5. Drawings not to scale. 6. All images used are for illustrative purposes only and do not represent the actual size, features, specifications, fittings and furnishing. 7. The developer reserves, the right to make revisions or alterations, at its absolute discretion, without any liability whatsoever.

# APARTMENT 801

4 Bedroom | Type A

Internal area:	411.69 m <sup>2</sup>	4,431 ft <sup>2</sup>
Balcony:	160.83 m <sup>2</sup>	1,732 ft <sup>2</sup>
Total area:	572.52 m <sup>2</sup>	6,163 ft <sup>2</sup>



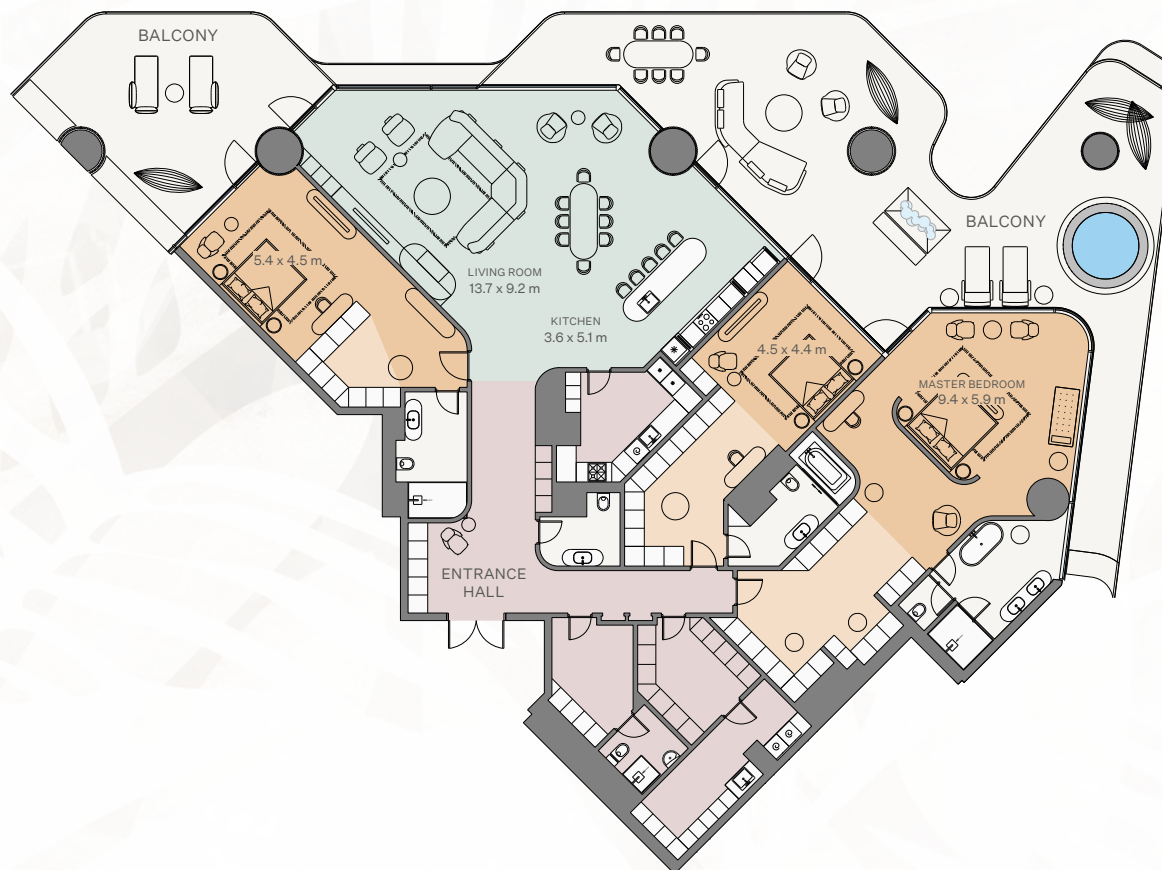
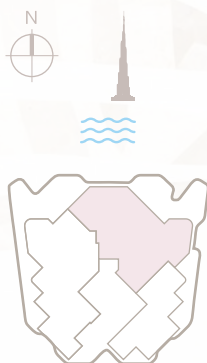
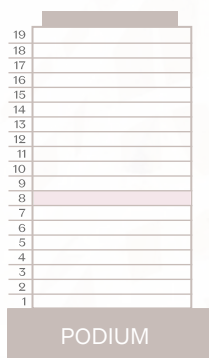
DISCLAIMER 1. All dimensions are in imperial and metric, and measured from finish to finish excluding construction tolerances. 2. All materials, dimensions and drawings are approximate only. 3. Information is subject to change without notice, at developer's absolute discretion. 4. Actual area may vary from the stated area. 5. Drawings not to scale. 6. All images used are for illustrative purposes only and do not represent the actual size, features, specifications, fittings and furnishing. 7. The developer reserves, the right to make revisions or alterations, at its absolute discretion, without any liability whatsoever.



## APARTMENT 802

3 Bedroom | Type D

Internal area:	410.71 m <sup>2</sup>	4,421 ft <sup>2</sup>
Balcony:	189.97 m <sup>2</sup>	2,045 ft <sup>2</sup>
Total area:	600.68 m <sup>2</sup>	6,466 ft <sup>2</sup>

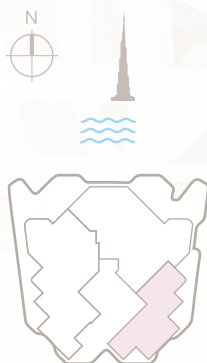
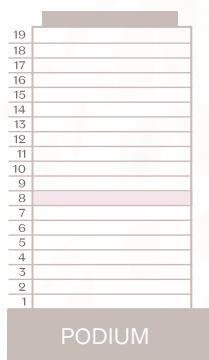


DISCLAIMER 1. All dimensions are in imperial and metric, and measured from finish to finish excluding construction tolerances. 2. All materials, dimensions and drawings are approximate only. 3. Information is subject to change without notice, at developer's absolute discretion. 4. Actual area may vary from the stated area. 5. Drawings not to scale. 6. All images used are for illustrative purposes only and do not represent the actual size, features, specifications, fittings and furnishing. 7. The developer reserves, the right to make revisions or alterations, at its absolute discretion, without any liability whatsoever.

# APARTMENT 803

2 Bedroom | Type C

Internal area:	203.26 m <sup>2</sup>	2,188 ft <sup>2</sup>
Balcony:	70.37 m <sup>2</sup>	757 ft <sup>2</sup>
Total area:	273.63 m <sup>2</sup>	2,945 ft <sup>2</sup>

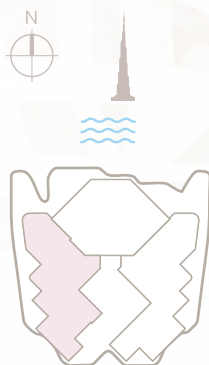
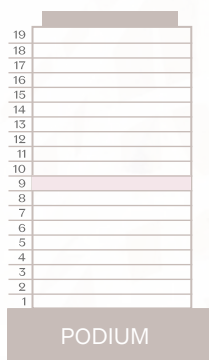


DISCLAIMER 1. All dimensions are in imperial and metric, and measured from finish to finish excluding construction tolerances. 2. All materials, dimensions and drawings are approximate only. 3. Information is subject to change without notice, at developer's absolute discretion. 4. Actual area may vary from the stated area. 5. Drawings not to scale. 6. All images used are for illustrative purposes only and do not represent the actual size, features, specifications, fittings and furnishing. 7. The developer reserves, the right to make revisions or alterations, at its absolute discretion, without any liability whatsoever.

# APARTMENT 901

3 Bedroom | Type A

Internal area:	346.29 m <sup>2</sup>	3,727 ft <sup>2</sup>
Balcony:	136.25 m <sup>2</sup>	1,467 ft <sup>2</sup>
Total area:	482.54 m <sup>2</sup>	5,194 ft <sup>2</sup>



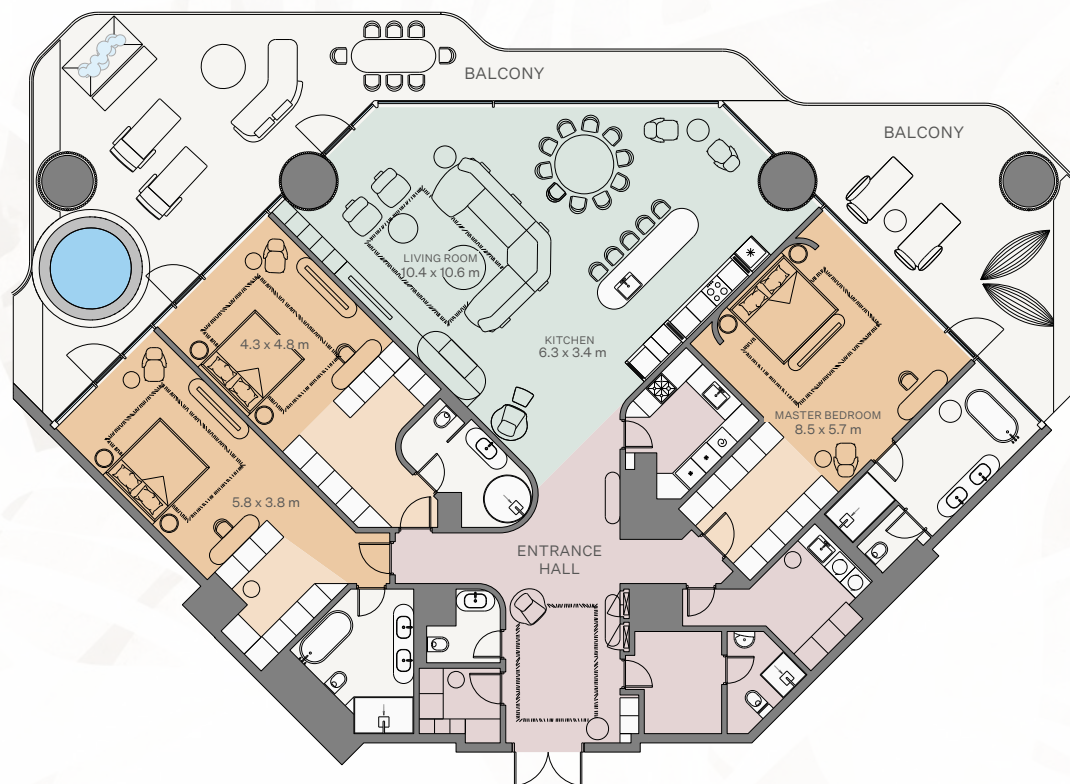
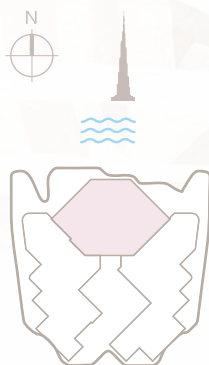
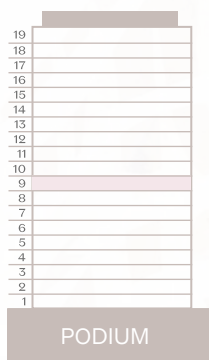
DISCLAIMER 1. All dimensions are in imperial and metric, and measured from finish to finish excluding construction tolerances. 2. All materials, dimensions and drawings are approximate only. 3. Information is subject to change without notice, at developer's absolute discretion. 4. Actual area may vary from the stated area. 5. Drawings not to scale. 6. All images used are for illustrative purposes only and do not represent the actual size, features, specifications, fittings and furnishing. 7. The developer reserves, the right to make revisions or alterations, at its absolute discretion, without any liability whatsoever.



## APARTMENT 902

3 Bedroom | Type B

Internal area: 319.3 m<sup>2</sup> 3,437 ft<sup>2</sup>  
Balcony: 125.16 m<sup>2</sup> 1,347 ft<sup>2</sup>  
Total area: 444.46 m<sup>2</sup> 4,784 ft<sup>2</sup>

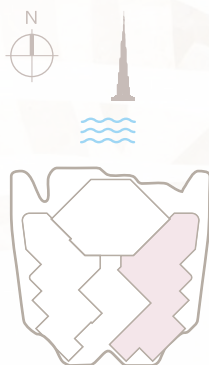
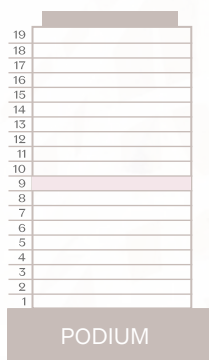


DISCLAIMER 1. All dimensions are in imperial and metric, and measured from finish to finish excluding construction tolerances. 2. All materials, dimensions and drawings are approximate only. 3. Information is subject to change without notice, at developer's absolute discretion. 4. Actual area may vary from the stated area. 5. Drawings not to scale. 6. All images used are for illustrative purposes only and do not represent the actual size, features, specifications, fittings and furnishing. 7. The developer reserves, the right to make revisions or alterations, at its absolute discretion, without any liability whatsoever.

## APARTMENT 903

3 Bedroom | Type C

Internal area:	360.99 m <sup>2</sup>	3,886 ft <sup>2</sup>
Balcony:	142.38 m <sup>2</sup>	1,532 ft <sup>2</sup>
Total area:	503.37 m <sup>2</sup>	5,418 ft <sup>2</sup>

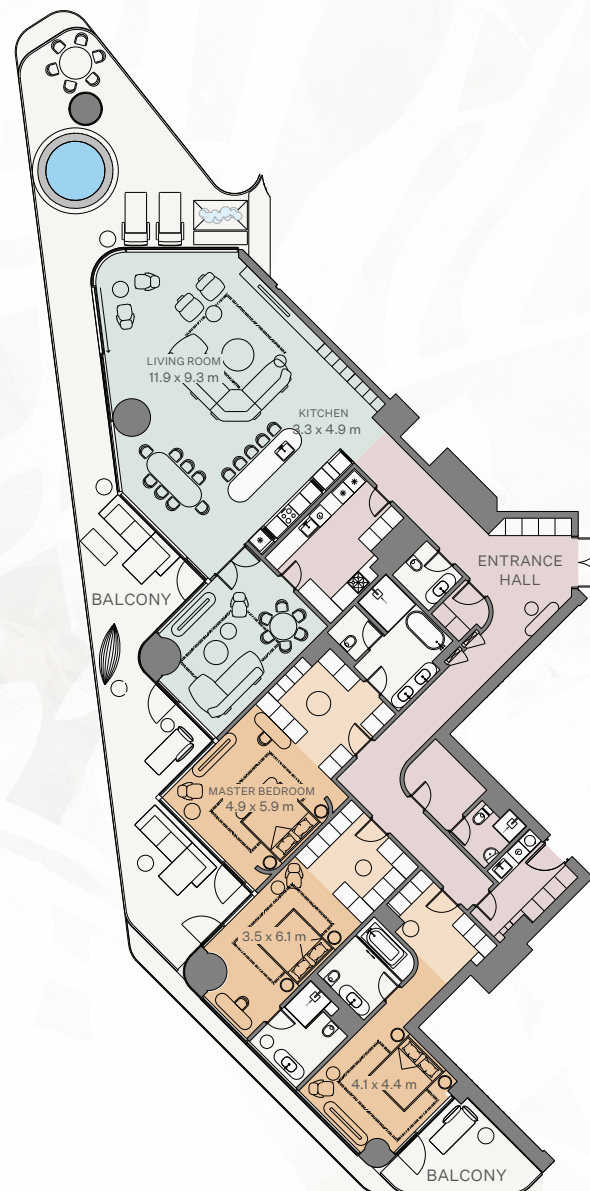
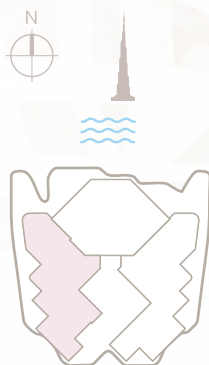
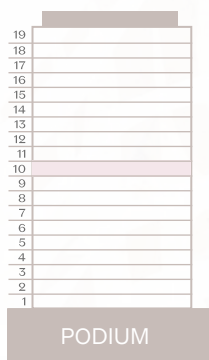


DISCLAIMER 1. All dimensions are in imperial and metric, and measured from finish to finish excluding construction tolerances. 2. All materials, dimensions and drawings are approximate only. 3. Information is subject to change without notice, at developer's absolute discretion. 4. Actual area may vary from the stated area. 5. Drawings not to scale. 6. All images used are for illustrative purposes only and do not represent the actual size, features, specifications, fittings and furnishing. 7. The developer reserves, the right to make revisions or alterations, at its absolute discretion, without any liability whatsoever.

# APARTMENT 1001

3 Bedroom | Type A

Internal area:	346.3 m <sup>2</sup>	3,728 ft <sup>2</sup>
Balcony:	130.95 m <sup>2</sup>	1,409 ft <sup>2</sup>
Total area:	477.25 m <sup>2</sup>	5,137 ft <sup>2</sup>



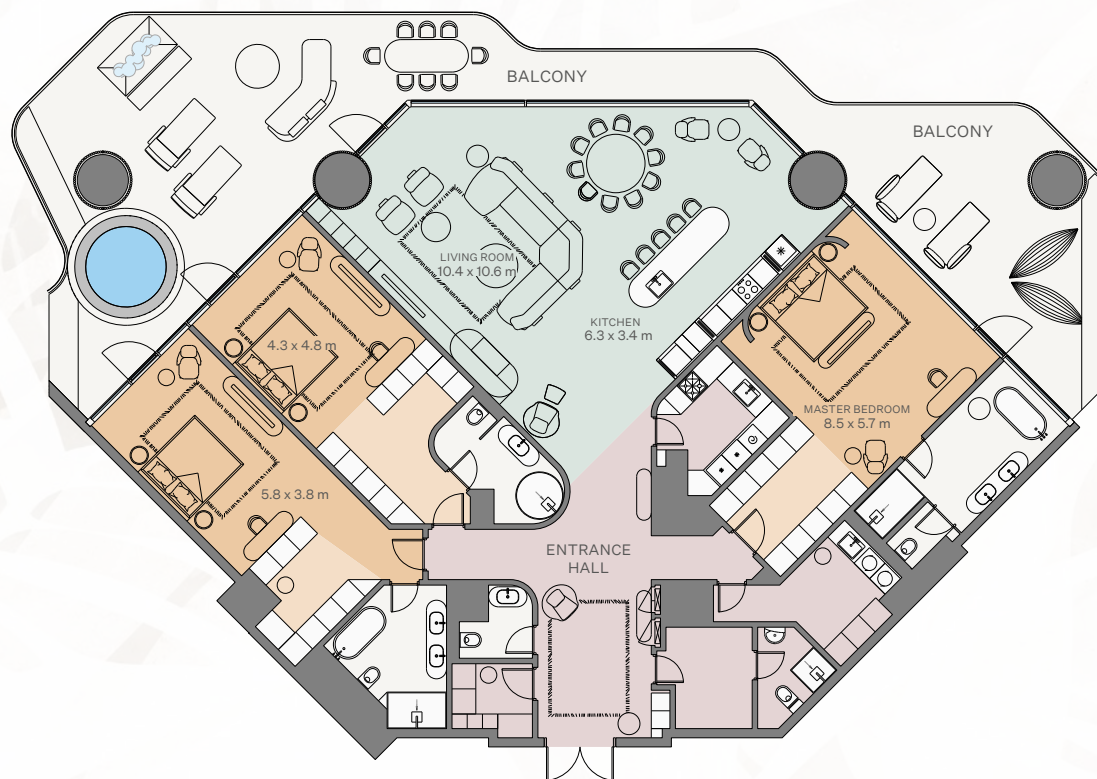
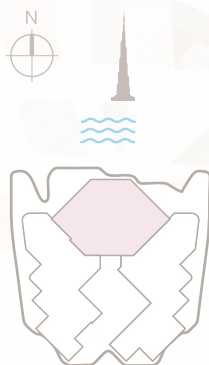
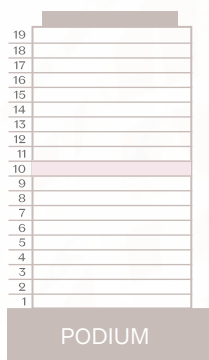
DISCLAIMER 1. All dimensions are in imperial and metric, and measured from finish to finish excluding construction tolerances. 2. All materials, dimensions and drawings are approximate only. 3. Information is subject to change without notice, at developer's absolute discretion. 4. Actual area may vary from the stated area. 5. Drawings not to scale. 6. All images used are for illustrative purposes only and do not represent the actual size, features, specifications, fittings and furnishing. 7. The developer reserves, the right to make revisions or alterations, at its absolute discretion, without any liability whatsoever.



## APARTMENT 1002

3 Bedroom | Type B

Internal area:	319.3 m <sup>2</sup>	3,437 ft <sup>2</sup>
Balcony:	129.33 m <sup>2</sup>	1,392 ft <sup>2</sup>
Total area:	448.63 m <sup>2</sup>	4,829 ft <sup>2</sup>

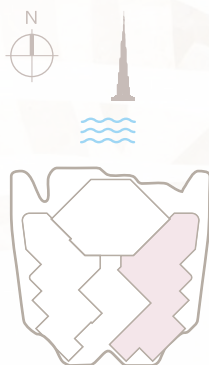
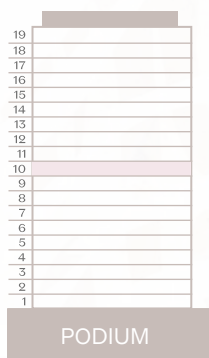


DISCLAIMER 1. All dimensions are in imperial and metric, and measured from finish to finish excluding construction tolerances. 2. All materials, dimensions and drawings are approximate only. 3. Information is subject to change without notice, at developer's absolute discretion. 4. Actual area may vary from the stated area. 5. Drawings not to scale. 6. All images used are for illustrative purposes only and do not represent the actual size, features, specifications, fittings and furnishing. 7. The developer reserves, the right to make revisions or alterations, at its absolute discretion, without any liability whatsoever.

# APARTMENT 1003

3 Bedroom | Type C

Internal area:	360.99 m <sup>2</sup>	3,886 ft <sup>2</sup>
Balcony:	140.66 m <sup>2</sup>	1,514 ft <sup>2</sup>
Total area:	501.65 m <sup>2</sup>	5,400 ft <sup>2</sup>

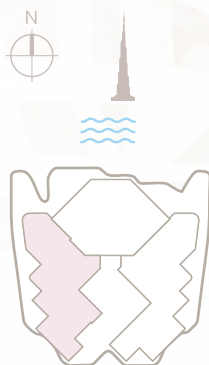
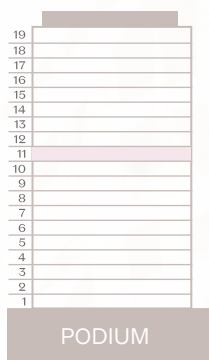


DISCLAIMER 1. All dimensions are in imperial and metric, and measured from finish to finish excluding construction tolerances. 2. All materials, dimensions and drawings are approximate only. 3. Information is subject to change without notice, at developer's absolute discretion. 4. Actual area may vary from the stated area. 5. Drawings not to scale. 6. All images used are for illustrative purposes only and do not represent the actual size, features, specifications, fittings and furnishing. 7. The developer reserves, the right to make revisions or alterations, at its absolute discretion, without any liability whatsoever.

# APARTMENT 1101

3 Bedroom | Type A

Internal area:	346.3 m <sup>2</sup>	3,728 ft <sup>2</sup>
Balcony:	136.26 m <sup>2</sup>	1,466 ft <sup>2</sup>
Total area:	482.56 m <sup>2</sup>	5,194 ft <sup>2</sup>



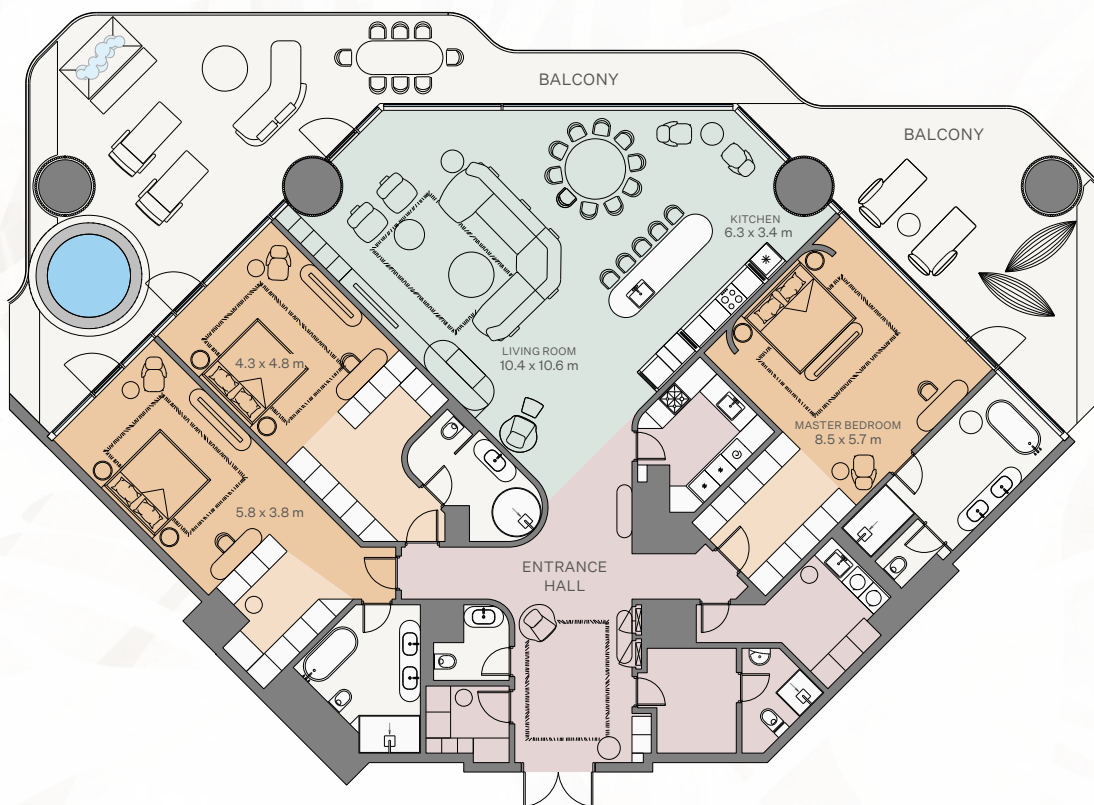
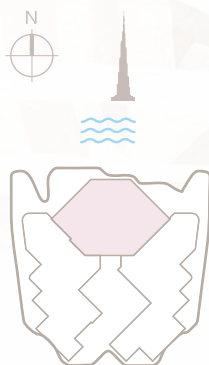
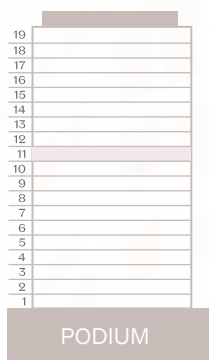
DISCLAIMER 1. All dimensions are in imperial and metric, and measured from finish to finish excluding construction tolerances. 2. All materials, dimensions and drawings are approximate only. 3. Information is subject to change without notice, at developer's absolute discretion. 4. Actual area may vary from the stated area. 5. Drawings not to scale. 6. All images used are for illustrative purposes only and do not represent the actual size, features, specifications, fittings and furnishing. 7. The developer reserves, the right to make revisions or alterations, at its absolute discretion, without any liability whatsoever.



## APARTMENT 1102

3 Bedroom | Type B

Internal area: 319.3 m<sup>2</sup> 3,437 ft<sup>2</sup>  
Balcony: 125.16 m<sup>2</sup> 1,347 ft<sup>2</sup>  
Total area: 444.46 m<sup>2</sup> 4,784 ft<sup>2</sup>

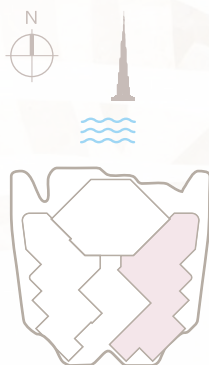
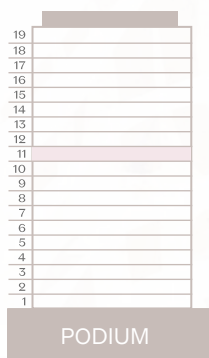


DISCLAIMER 1. All dimensions are in imperial and metric, and measured from finish to finish excluding construction tolerances. 2. All materials, dimensions and drawings are approximate only. 3. Information is subject to change without notice, at developer's absolute discretion. 4. Actual area may vary from the stated area. 5. Drawings not to scale. 6. All images used are for illustrative purposes only and do not represent the actual size, features, specifications, fittings and furnishing. 7. The developer reserves, the right to make revisions or alterations, at its absolute discretion, without any liability whatsoever.

## APARTMENT 1103

3 Bedroom | Type C

Internal area:	360.99 m <sup>2</sup>	3,886 ft <sup>2</sup>
Balcony:	147.13 m <sup>2</sup>	1,583 ft <sup>2</sup>
Total area:	508.12 m <sup>2</sup>	5,469 ft <sup>2</sup>

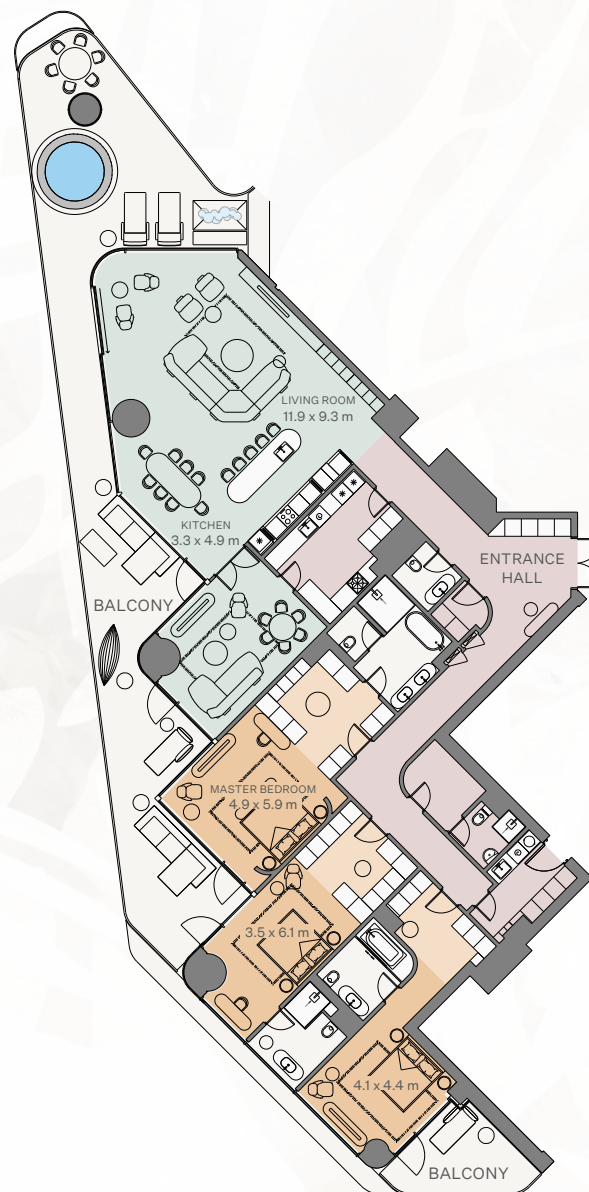
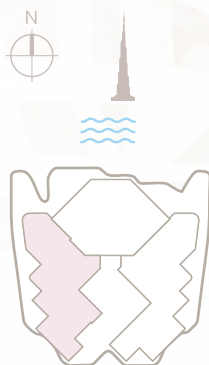
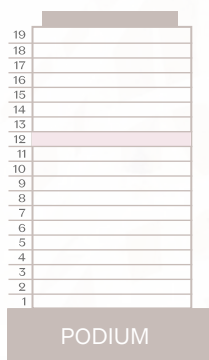


DISCLAIMER 1. All dimensions are in imperial and metric, and measured from finish to finish excluding construction tolerances. 2. All materials, dimensions and drawings are approximate only. 3. Information is subject to change without notice, at developer's absolute discretion. 4. Actual area may vary from the stated area. 5. Drawings not to scale. 6. All images used are for illustrative purposes only and do not represent the actual size, features, specifications, fittings and furnishing. 7. The developer reserves, the right to make revisions or alterations, at its absolute discretion, without any liability whatsoever.

## APARTMENT 1201

3 Bedroom | Type A

Internal area:	346.29 m <sup>2</sup>	3,727 ft <sup>2</sup>
Balcony:	130.94 m <sup>2</sup>	1,410 ft <sup>2</sup>
Total area:	477.23 m <sup>2</sup>	5,137 ft <sup>2</sup>



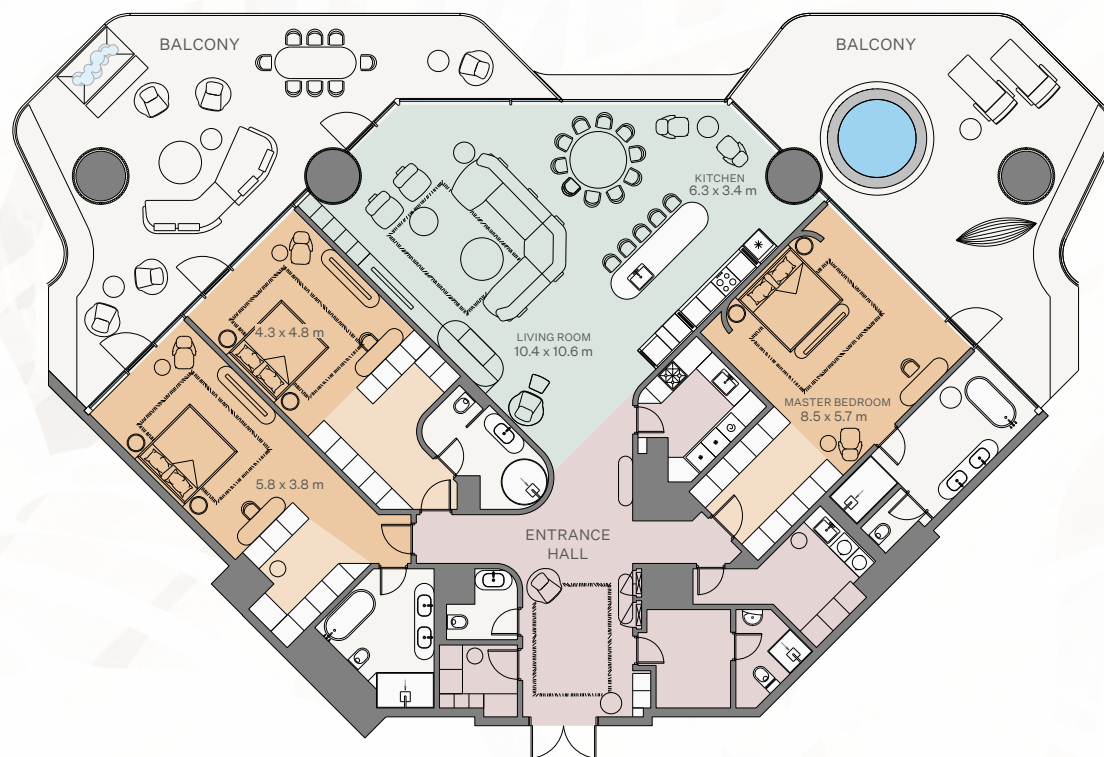
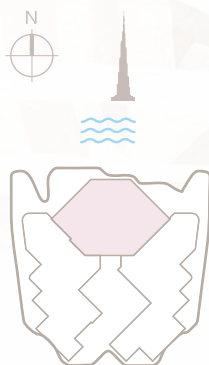
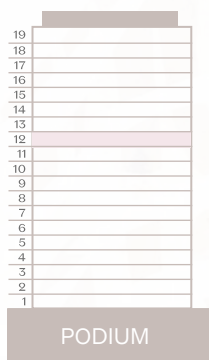
DISCLAIMER 1. All dimensions are in imperial and metric, and measured from finish to finish excluding construction tolerances. 2. All materials, dimensions and drawings are approximate only. 3. Information is subject to change without notice, at developer's absolute discretion. 4. Actual area may vary from the stated area. 5. Drawings not to scale. 6. All images used are for illustrative purposes only and do not represent the actual size, features, specifications, fittings and furnishing. 7. The developer reserves, the right to make revisions or alterations, at its absolute discretion, without any liability whatsoever.



## APARTMENT 1202

3 Bedroom | Type B

Internal area:	319.3 m <sup>2</sup>	3,437 ft <sup>2</sup>
Balcony:	145.34 m <sup>2</sup>	1,564 ft <sup>2</sup>
Total area:	465.64 m <sup>2</sup>	5,001 ft <sup>2</sup>

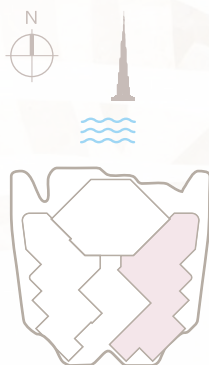
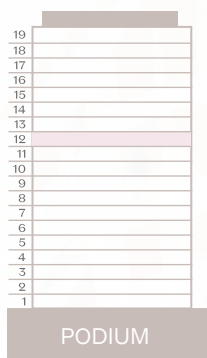


DISCLAIMER 1. All dimensions are in imperial and metric, and measured from finish to finish excluding construction tolerances. 2. All materials, dimensions and drawings are approximate only. 3. Information is subject to change without notice, at developer's absolute discretion. 4. Actual area may vary from the stated area. 5. Drawings not to scale. 6. All images used are for illustrative purposes only and do not represent the actual size, features, specifications, fittings and furnishing. 7. The developer reserves, the right to make revisions or alterations, at its absolute discretion, without any liability whatsoever.

## APARTMENT 1203

3 Bedroom | Type C

Internal area:	360.68 m <sup>2</sup>	3,886 ft <sup>2</sup>
Balcony:	131.08 m <sup>2</sup>	1,410 ft <sup>2</sup>
Total area:	492.06 m <sup>2</sup>	5,296 ft <sup>2</sup>

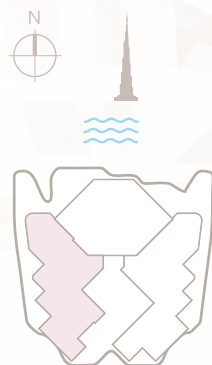
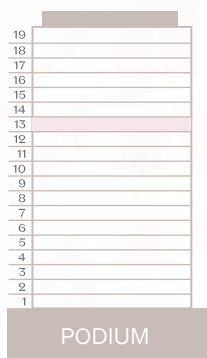


DISCLAIMER 1. All dimensions are in imperial and metric, and measured from finish to finish excluding construction tolerances. 2. All materials, dimensions and drawings are approximate only. 3. Information is subject to change without notice, at developer's absolute discretion. 4. Actual area may vary from the stated area. 5. Drawings not to scale. 6. All images used are for illustrative purposes only and do not represent the actual size, features, specifications, fittings and furnishing. 7. The developer reserves, the right to make revisions or alterations, at its absolute discretion, without any liability whatsoever.

# APARTMENT 1301

3 Bedroom | Type A

Internal area:	346.29 m <sup>2</sup>	3,727 ft <sup>2</sup>
Balcony:	136.25 m <sup>2</sup>	1,467 ft <sup>2</sup>
Total area:	482.54 m <sup>2</sup>	5,194 ft <sup>2</sup>



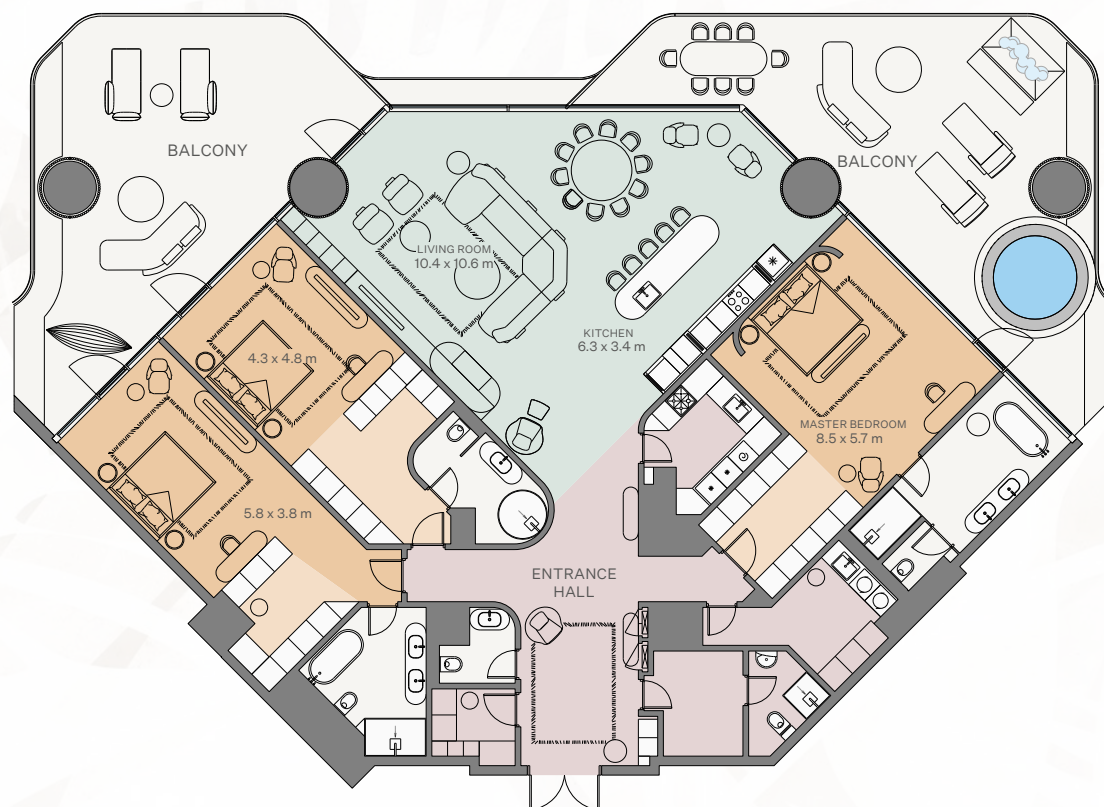
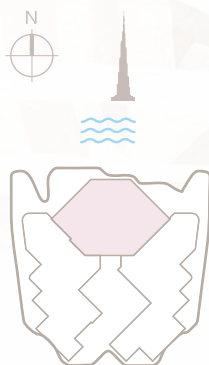
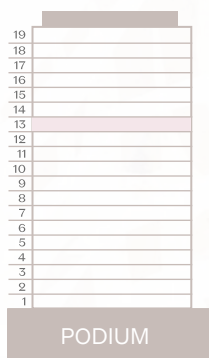
DISCLAIMER 1. All dimensions are in imperial and metric, and measured from finish to finish excluding construction tolerances. 2. All materials, dimensions and drawings are approximate only. 3. Information is subject to change without notice, at developer's absolute discretion. 4. Actual area may vary from the stated area. 5. Drawings not to scale. 6. All images used are for illustrative purposes only and do not represent the actual size, features, specifications, fittings and furnishing. 7. The developer reserves, the right to make revisions or alterations, at its absolute discretion, without any liability whatsoever.



## APARTMENT 1302

3 Bedroom | Type B

Internal area:	319.3 m <sup>2</sup>	3,437 ft <sup>2</sup>
Balcony:	136.31 m <sup>2</sup>	1,467 ft <sup>2</sup>
Total area:	455.61 m <sup>2</sup>	4,904 ft <sup>2</sup>

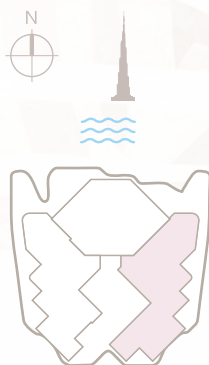
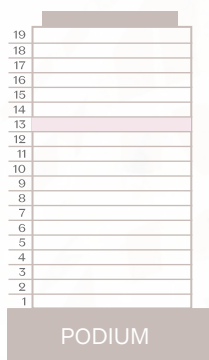


DISCLAIMER 1. All dimensions are in imperial and metric, and measured from finish to finish excluding construction tolerances. 2. All materials, dimensions and drawings are approximate only. 3. Information is subject to change without notice, at developer's absolute discretion. 4. Actual area may vary from the stated area. 5. Drawings not to scale. 6. All images used are for illustrative purposes only and do not represent the actual size, features, specifications, fittings and furnishing. 7. The developer reserves, the right to make revisions or alterations, at its absolute discretion, without any liability whatsoever.

## APARTMENT 1303

3 Bedroom | Type C

Internal area:	360.98 m <sup>2</sup>	3,886 ft <sup>2</sup>
Balcony:	136.39 m <sup>2</sup>	1,468 ft <sup>2</sup>
Total area:	497.37 m <sup>2</sup>	5,354 ft <sup>2</sup>

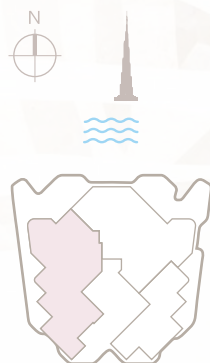


DISCLAIMER 1. All dimensions are in imperial and metric, and measured from finish to finish excluding construction tolerances. 2. All materials, dimensions and drawings are approximate only. 3. Information is subject to change without notice, at developer's absolute discretion. 4. Actual area may vary from the stated area. 5. Drawings not to scale. 6. All images used are for illustrative purposes only and do not represent the actual size, features, specifications, fittings and furnishing. 7. The developer reserves, the right to make revisions or alterations, at its absolute discretion, without any liability whatsoever.

# APARTMENT 1401

4 Bedroom | Type B

Internal area:	431.63 m <sup>2</sup>	4,646 ft <sup>2</sup>
Balcony:	171.61 m <sup>2</sup>	1,847 ft <sup>2</sup>
Total area:	603.24 m <sup>2</sup>	6,493 ft <sup>2</sup>



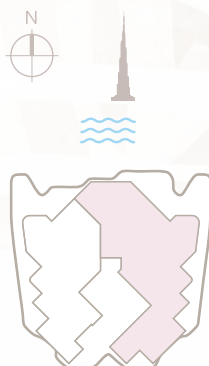
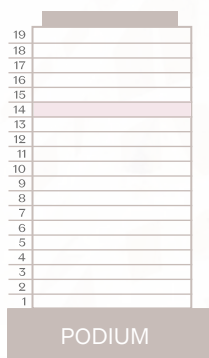
DISCLAIMER 1. All dimensions are in imperial and metric, and measured from finish to finish excluding construction tolerances. 2. All materials, dimensions and drawings are approximate only. 3. Information is subject to change without notice, at developer's absolute discretion. 4. Actual area may vary from the stated area. 5. Drawings not to scale. 6. All images used are for illustrative purposes only and do not represent the actual size, features, specifications, fittings and furnishing. 7. The developer reserves, the right to make revisions or alterations, at its absolute discretion, without any liability whatsoever.



## APARTMENT 1402

5 Bedroom | Type A

Internal area:	596.04 m <sup>2</sup>	6,416 ft <sup>2</sup>
Balcony:	228.88 m <sup>2</sup>	2,463 ft <sup>2</sup>
Total area:	824.92 m <sup>2</sup>	8,879 ft <sup>2</sup>

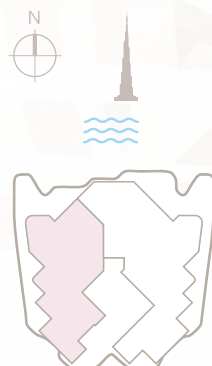


DISCLAIMER 1. All dimensions are in imperial and metric, and measured from finish to finish excluding construction tolerances. 2. All materials, dimensions and drawings are approximate only. 3. Information is subject to change without notice, at developer's absolute discretion. 4. Actual area may vary from the stated area. 5. Drawings not to scale. 6. All images used are for illustrative purposes only and do not represent the actual size, features, specifications, fittings and furnishing. 7. The developer reserves, the right to make revisions or alterations, at its absolute discretion, without any liability whatsoever.

# APARTMENT 1501

4 Bedroom | Type B

Internal area: 431.64 m<sup>2</sup> 4,646 ft<sup>2</sup>  
Balcony: 177.85 m<sup>2</sup> 1,914 ft<sup>2</sup>  
Total area: 609.49 m<sup>2</sup> 6,560 ft<sup>2</sup>

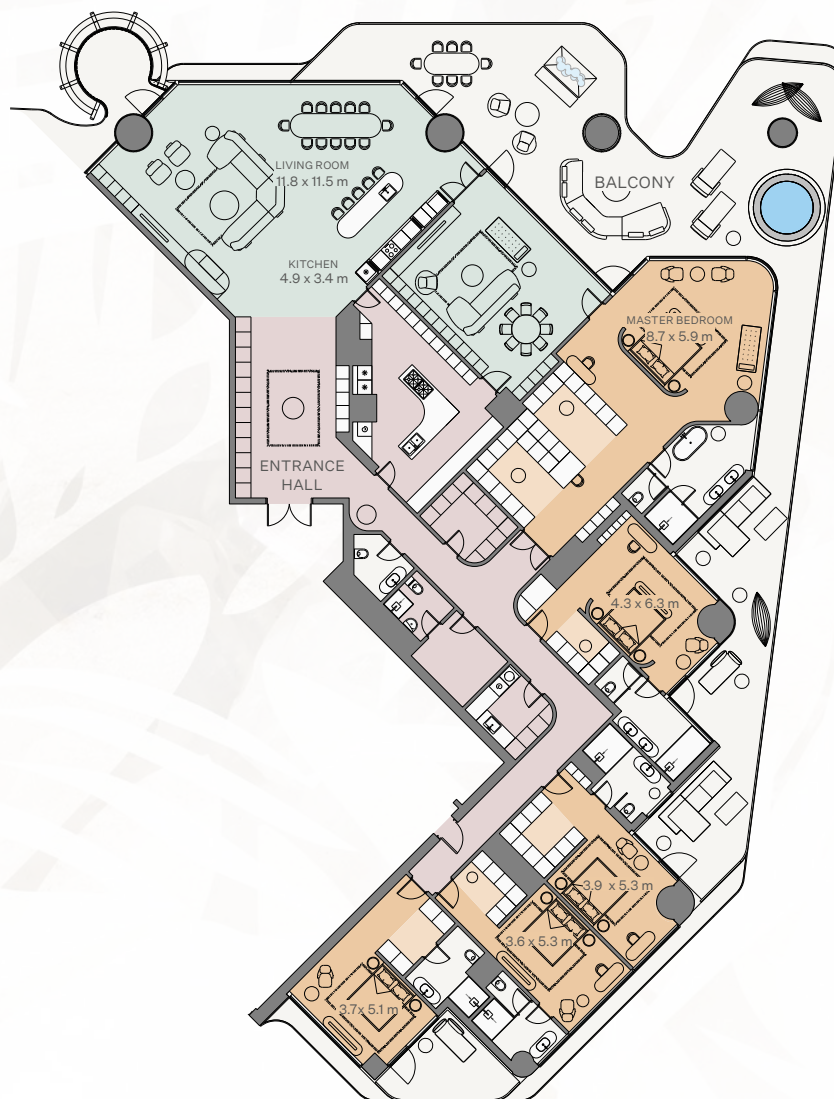
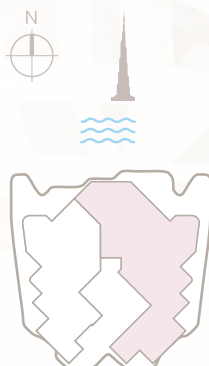
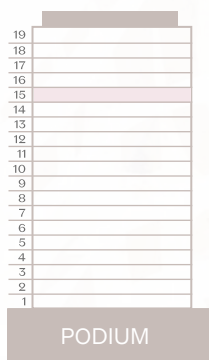


DISCLAIMER 1. All dimensions are in imperial and metric, and measured from finish to finish excluding construction tolerances. 2. All materials, dimensions and drawings are approximate only. 3. Information is subject to change without notice, at developer's absolute discretion. 4. Actual area may vary from the stated area. 5. Drawings not to scale. 6. All images used are for illustrative purposes only and do not represent the actual size, features, specifications, fittings and furnishing. 7. The developer reserves, the right to make revisions or alterations, at its absolute discretion, without any liability whatsoever.

# APARTMENT 1502

5 Bedroom | Type A

Internal area:	596.05 m <sup>2</sup>	6,416 ft <sup>2</sup>
Balcony:	227.22 m <sup>2</sup>	2,446 ft <sup>2</sup>
Total area:	823.27 m <sup>2</sup>	8,862 ft <sup>2</sup>



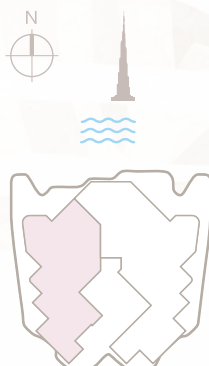
DISCLAIMER 1. All dimensions are in imperial and metric, and measured from finish to finish excluding construction tolerances. 2. All materials, dimensions and drawings are approximate only. 3. Information is subject to change without notice, at developer's absolute discretion. 4. Actual area may vary from the stated area. 5. Drawings not to scale. 6. All images used are for illustrative purposes only and do not represent the actual size, features, specifications, fittings and furnishing. 7. The developer reserves, the right to make revisions or alterations, at its absolute discretion, without any liability whatsoever.



# APARTMENT 1601

4 Bedroom | Type B

Internal area:	431.63 m <sup>2</sup>	4,646 ft <sup>2</sup>
Balcony:	159.39 m <sup>2</sup>	1,716 ft <sup>2</sup>
Total area:	591.02 m <sup>2</sup>	6,362 ft <sup>2</sup>

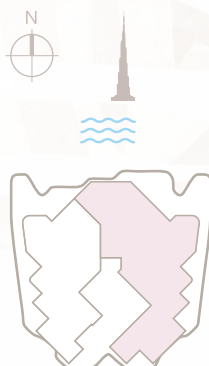


DISCLAIMER 1. All dimensions are in imperial and metric, and measured from finish to finish excluding construction tolerances. 2. All materials, dimensions and drawings are approximate only. 3. Information is subject to change without notice, at developer's absolute discretion. 4. Actual area may vary from the stated area. 5. Drawings not to scale. 6. All images used are for illustrative purposes only and do not represent the actual size, features, specifications, fittings and furnishing. 7. The developer reserves, the right to make revisions or alterations, at its absolute discretion, without any liability whatsoever.

# APARTMENT 1602

5 Bedroom | Type A

Internal area:	596.06 m <sup>2</sup>	6,416 ft <sup>2</sup>
Balcony:	224.23 m <sup>2</sup>	2,414 ft <sup>2</sup>
Total area:	820.29 m <sup>2</sup>	8,830 ft <sup>2</sup>

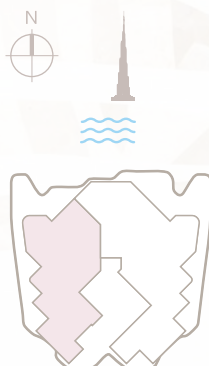


DISCLAIMER 1. All dimensions are in imperial and metric, and measured from finish to finish excluding construction tolerances. 2. All materials, dimensions and drawings are approximate only. 3. Information is subject to change without notice, at developer's absolute discretion. 4. Actual area may vary from the stated area. 5. Drawings not to scale. 6. All images used are for illustrative purposes only and do not represent the actual size, features, specifications, fittings and furnishing. 7. The developer reserves, the right to make revisions or alterations, at its absolute discretion, without any liability whatsoever.

# APARTMENT 1701

4 Bedroom | Type B

Internal area:	431.65 m <sup>2</sup>	4,646 ft <sup>2</sup>
Balcony:	165.6 m <sup>2</sup>	1,783 ft <sup>2</sup>
Total area:	597.25 m <sup>2</sup>	6,429 ft <sup>2</sup>



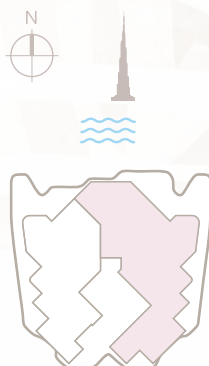
DISCLAIMER 1. All dimensions are in imperial and metric, and measured from finish to finish excluding construction tolerances. 2. All materials, dimensions and drawings are approximate only. 3. Information is subject to change without notice, at developer's absolute discretion. 4. Actual area may vary from the stated area. 5. Drawings not to scale. 6. All images used are for illustrative purposes only and do not represent the actual size, features, specifications, fittings and furnishing. 7. The developer reserves, the right to make revisions or alterations, at its absolute discretion, without any liability whatsoever.



# APARTMENT 1702

5 Bedroom | Type A

Internal area:	596.09 m <sup>2</sup>	6,416 ft <sup>2</sup>
Balcony:	252.07 m <sup>2</sup>	2,714 ft <sup>2</sup>
Total area:	848.16 m <sup>2</sup>	9,130 ft <sup>2</sup>



DISCLAIMER 1. All dimensions are in imperial and metric, and measured from finish to finish excluding construction tolerances. 2. All materials, dimensions and drawings are approximate only. 3. Information is subject to change without notice, at developer's absolute discretion. 4. Actual area may vary from the stated area. 5. Drawings not to scale. 6. All images used are for illustrative purposes only and do not represent the actual size, features, specifications, fittings and furnishing. 7. The developer reserves, the right to make revisions or alterations, at its absolute discretion, without any liability whatsoever.

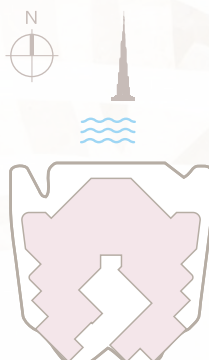
# PENTHOUSE 1801

5 Bedroom | Type B

Internal area: 1029.83 m<sup>2</sup> 11,085 ft<sup>2</sup>

Balcony: 438.43 m<sup>2</sup> 4,719 ft<sup>2</sup>

Total area: 1468.26 m<sup>2</sup> 15,804 ft<sup>2</sup>



DISCLAIMER 1. All dimensions are in imperial and metric, and measured from finish to finish excluding construction tolerances. 2. All materials, dimensions and drawings are approximate only. 3. Information is subject to change without notice, at developer's absolute discretion. 4. Actual area may vary from the stated area. 5. Drawings not to scale. 6. All images used are for illustrative purposes only and do not represent the actual size, features, specifications, fittings and furnishing. 7. The developer reserves, the right to make revisions or alterations, at its absolute discretion, without any liability whatsoever.

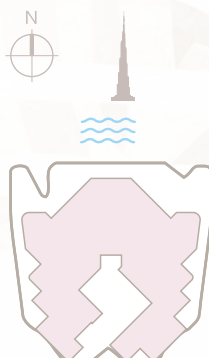
## PENTHOUSE 1901

3 Bedroom | Type B

Internal area: 1029.66 m<sup>2</sup> 11,083 ft<sup>2</sup>

Balcony: 441.33 m<sup>2</sup> 4,751 ft<sup>2</sup>

Total area: 1,470.99 m<sup>2</sup> 15,834 ft<sup>2</sup>



DISCLAIMER 1. All dimensions are in imperial and metric, and measured from finish to finish excluding construction tolerances. 2. All materials, dimensions and drawings are approximate only. 3. Information is subject to change without notice, at developer's absolute discretion. 4. Actual area may vary from the stated area. 5. Drawings not to scale. 6. All images used are for illustrative purposes only and do not represent the actual size, features, specifications, fittings and furnishing. 7. The developer reserves, the right to make revisions or alterations, at its absolute discretion, without any liability whatsoever.



عشاق  
DUBAI

CHRISTIE'S  
INTERNATIONAL REAL ESTATE  
— DUBAI —

P.O. BOX: 25129, Dubai, UAE, ORN11814

+971 4 425 2780 | [info@christiesrealestatedubai.com](mailto:info@christiesrealestatedubai.com) | [www.christiesrealestatedubai.com](http://www.christiesrealestatedubai.com)