



عالمنا

DUBAI

CHRISTIE'S
INTERNATIONAL REAL ESTATE

— DUBAI —

A stylized illustration of a tree with a thick, textured brown trunk and branches. The leaves are represented by numerous small, elongated, brown shapes with a textured appearance, arranged in clusters along the branches. The background is a solid teal color.

BY R.EVOLUTION

ENERGY
YOU
WELLBEING
ANCIENT KNOWLEDGE

الشارقة
DUBAI

“WILD LUXURY” BY R.EVOLUTION: A UNIQUE LIFE EXPERIENCE

An experience designed for those who seek originality. Who shun conformity. Who yearn for positivity, purity and well-being. If this resonates with you, then it's time to embrace “Wild Luxury”. It's time to put down roots.

عوا
DUBAI



LOCATION DUBAI



BUSINESS BAY

10-15 Minutes



The Dubai Mall



Burj Khalifa



Dubai Opera



The Dubai Fountain



DIFC

25 - 35 Minutes



Dubai Marina



Jumeira Beach



Burj Al Arab



Dubai International Airport



Palm Jumeira



Mall of the Emirates





EMBRACE YOURSELF WITH ARCHITECTURE

We have a firm belief that in the 21st century, possessing luxurious things should never be an end in itself.

More than just a place to live, Eywa is a unique way to live. A way of living that's organic and vivid, imaginative and all-enveloping. A way of living that will truly enrich your soul, your health and your well-being.

Eywa
DUBAI





Strikingly unique from your very first glimpse, Eywa instantly evokes a glorious Tree of Life. An organic canopy of branches, an enticing weave of roots, a floating oasis and a living breathing building that represents timeless wisdom and enduring growth.

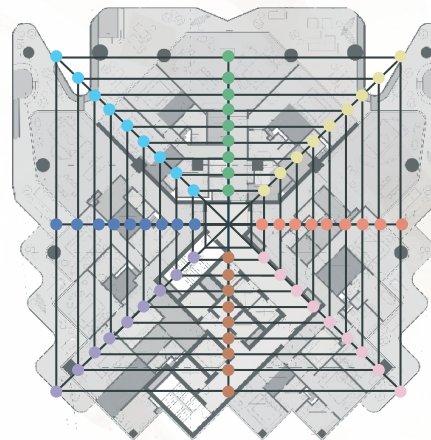
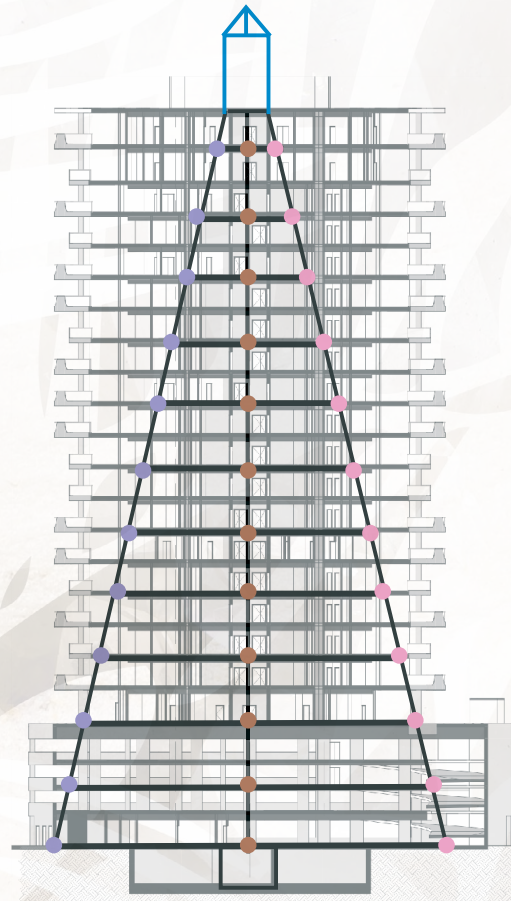
اىوا
DUBAI




EYWA IS A BREATHING ORGANISM – INTERACTING AT ALL LEVELS AND THROUGH ALL SENSES

Eywa is a beautiful kinship between ancient science and wisdom, modern technology and world-class architecture.

Eywa combines the venerable design principles of Vastu Shastra with the latest technologies to harmonise the building's energies, and create an environment that supports your well-being and shapes a promise for modern life.



Location Of Stones

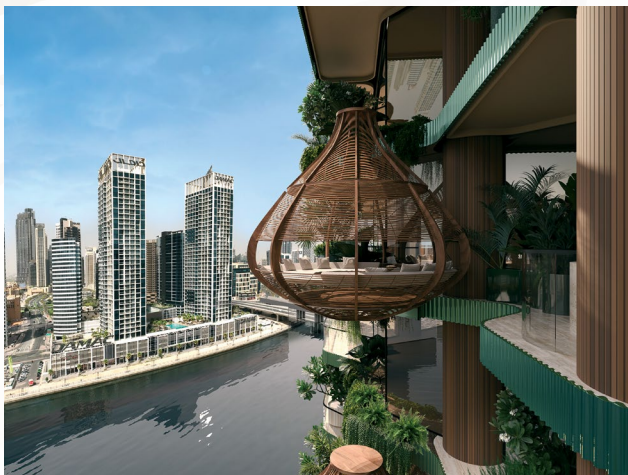
-  **The North-West** - selenite
-  **The North** - green jade, malachite, green quartz
-  **The North-East** - yellow amber, yellow tourmaline
-  **The West** - black agate, black onyx, labrador, lapis lazuli
-  **The South** - red agate, red jasper, cornelian
-  **The East** - red tourmaline, red quartz, red amber
-  **The South-East** - rock crystal, rose quartz, white quartz
-  **The South-West** - amethyst
-  The central part is left free for the flow of divine energy.

INSIDE EYWA

From a chef's table and library to private waterfalls and hammocks, Eywa is packed with ideas, features and moments that are vibrantly different.

Most importantly of all, each and every one of these extraordinary life experiences is deliberately intended to augment your well-being, and touch your heart and senses – every day.

عشيرة
DUBAI



Private Waterfalls, Pools and Gardens

- Being at one with nature.
Living in the 'here and now'.



'Apartment ONE Eywa': the Dedicated Residents' Community Space

- Throughout Eywa we've designed areas devoted to shared spaces and facilities.



Health and Well-being Facilities

- Eywa stretches and supports you – mind, body and spirit.

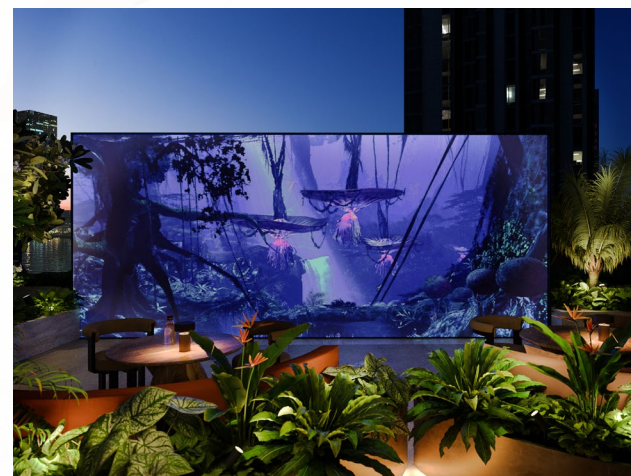


SPA - Our state-of-the-art Wellness Spa features cold plunge pools, saunas, a hammam bath and more.



Club House Dining

- Quite simply, this is a dining experience unlike any other.



Cinemas - Movies.

They fire the imagination and escapism.



Library - Step between the trunks of our tree, and you'll discover how Eywa celebrates, shares and nurtures knowledge.



Flying Trees - Our vision is for Eywa to be a living organism, at one with nature and with its surroundings.



Playgrounds - Our playroom will entertain and inspire with toys and games for children of all ages.



Offices & Workspaces - Eywa features two office-conference rooms, that also function as private dining areas.



Parking - We don't just provide four levels of parking, we've also designed them as an extension of your home

EYWA AMENITIES

Ground Floor:

- Private drop off with valet
- Outdoor lounge seating
- Outdoor waterfall
- Grand wood entry door
- Natural stones and decorative plasterwork
- Welcoming double volume reception
- Cozy and diverse seating areas and typologies, including a lounge in the treehouse.
- Diverse collection of thoughtfully curated books
- Private service and deliveries entrance and elevator
- 24/7 concierge service only for our residents
- A 5G network inside the building

Parking:

- Ground and podium levels
- Drivers lounge
- Valet carts
- Open for natural ventilation to hanging gardens and views
- With seating areas, lounges and quality lighting and finishes to accent the vehicles within
- EV charging stations
- Bicycle parking, bike pump and maintenance stand

Amenities Floor

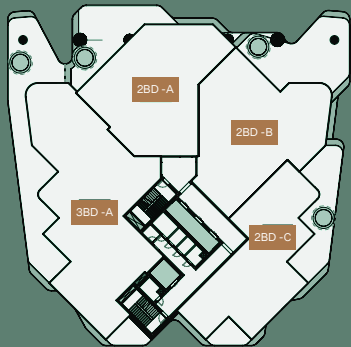
- A 25m infinity-pool and children's pool
- A crystal garden
- Pool deck with private loungers
- Sunken built in seating
- Secret view captivating built-in lounge
- Outdoor bar
- Change rooms
- A clubhouse featuring a private chef with open chefs kitchen and fully fitted catering kitchen, private dining, work and function/conference rooms and a library and music lounge. Very multifunctional and adaptable to personal events.
- Spa with massage and treatment rooms, Hammam, Sauna, Experience Showers, Cold Plunge, Relaxation Lounge
- Salon - Hairdresser and mani/pedi station
- Fitness club and Yoga studio with luxury equipment from a sustainable and leading manufacturer, outdoor gym
- Open-air and indoor cinema
- A children's club with Montessori and STEAM led design and resources
- Outdoor playground "Kids workshop"

Units:

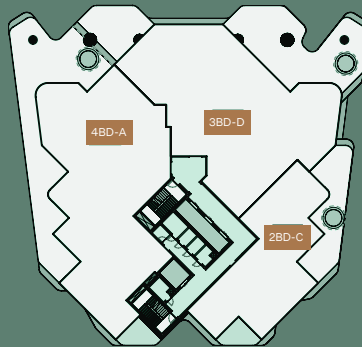
- 2,3,4 and 5 bed residential apartments (46 in total)
- Signature live edge wood unit entry door
- A soaring dining area with hammocks on the private terraces
- Private waterfalls and pools
- Focus on natural daylight and views
- Natural stone floors in living spaces and engineered wood flooring in bedrooms
- Fully customized sustainably produced kitchen joinery
- Signature stone Kitchen Countertops
- European Kitchen Appliances with high energy rating
- European Sanitaryware - bathtubs, walk-in showers, ample storage, signature stone accents
- Generous storage and service spaces
- Warm and Bright color tones throughout

UNITS MIX

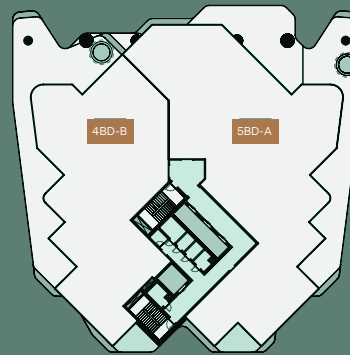
Floorplate levels
2&3



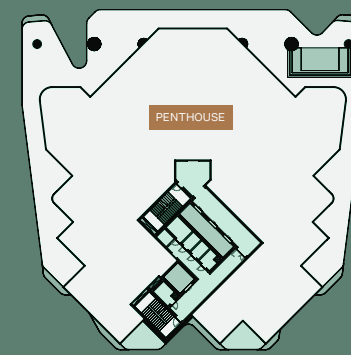
Floorplate levels
4, 5, 6, 7, 8



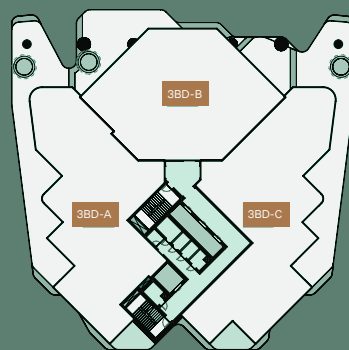
Floorplate levels
14, 15, 16, 17



Floorplate levels
18&19



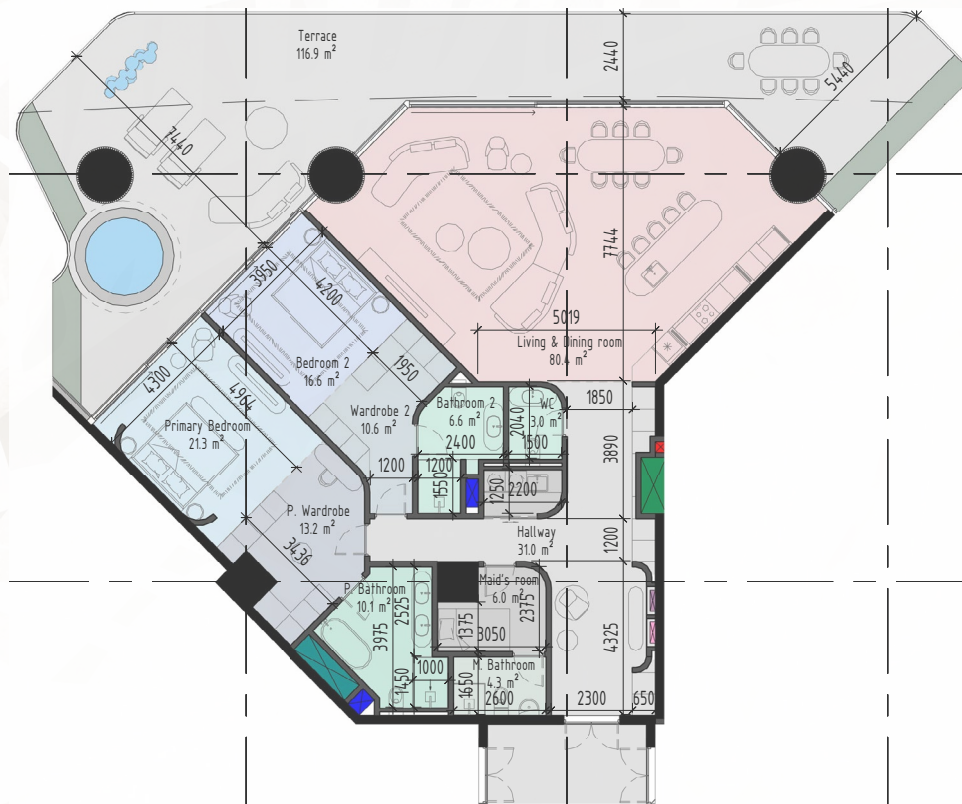
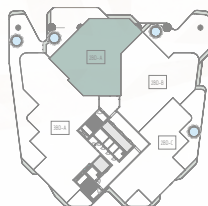
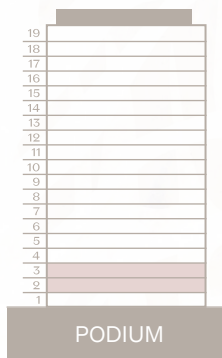
Floorplate levels
9, 10, 11, 12, 13



2 BEDROOM

Type A

Internal area:	342 m ²	3682 ft ²
Terraces:	154 m ²	1658 ft ²
Total area:	496 m ²	5339 ft ²

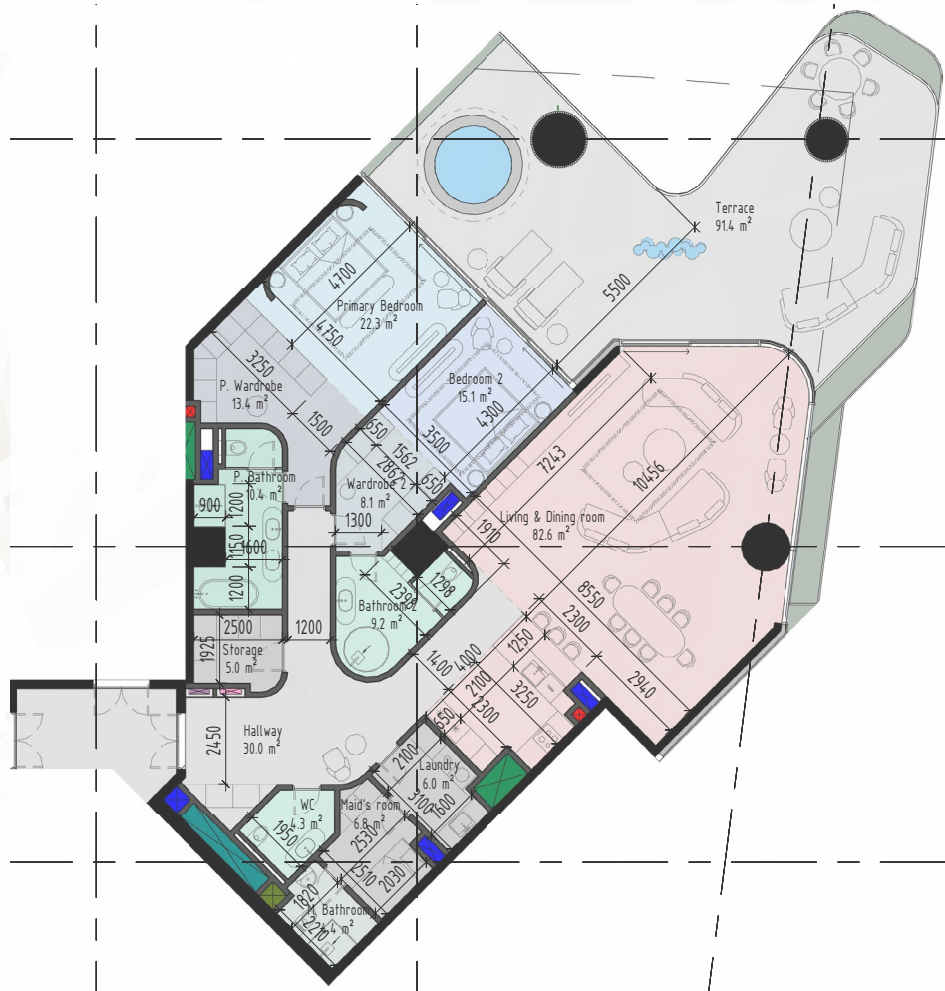
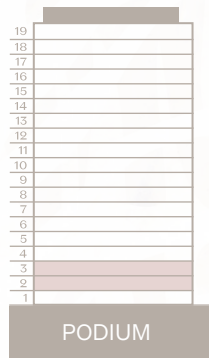


FLOOR PLAN 1. All dimensions are in imperial and metric, and measured from finish to finish excluding construction tolerances. 2. All materials, dimensions and drawings are approximate only. 3. Information is subject to change without notice, at developer's absolute discretion. 4. Actual area may vary from the stated area. 5. Drawings not to scale. 6. All images used are for illustrative purposes only and do not represent the actual size, features, specifications, fittings and furnishing. 7. The developer reserves, the right to make revisions or alterations, at its absolute discretion, without any liability whatsoever.

2 BEDROOM

Type B

Internal area:	243 m ²	2616 ft ²
Terraces:	94 m ²	1012 ft ²
Total area:	337 m ²	3628 ft ²

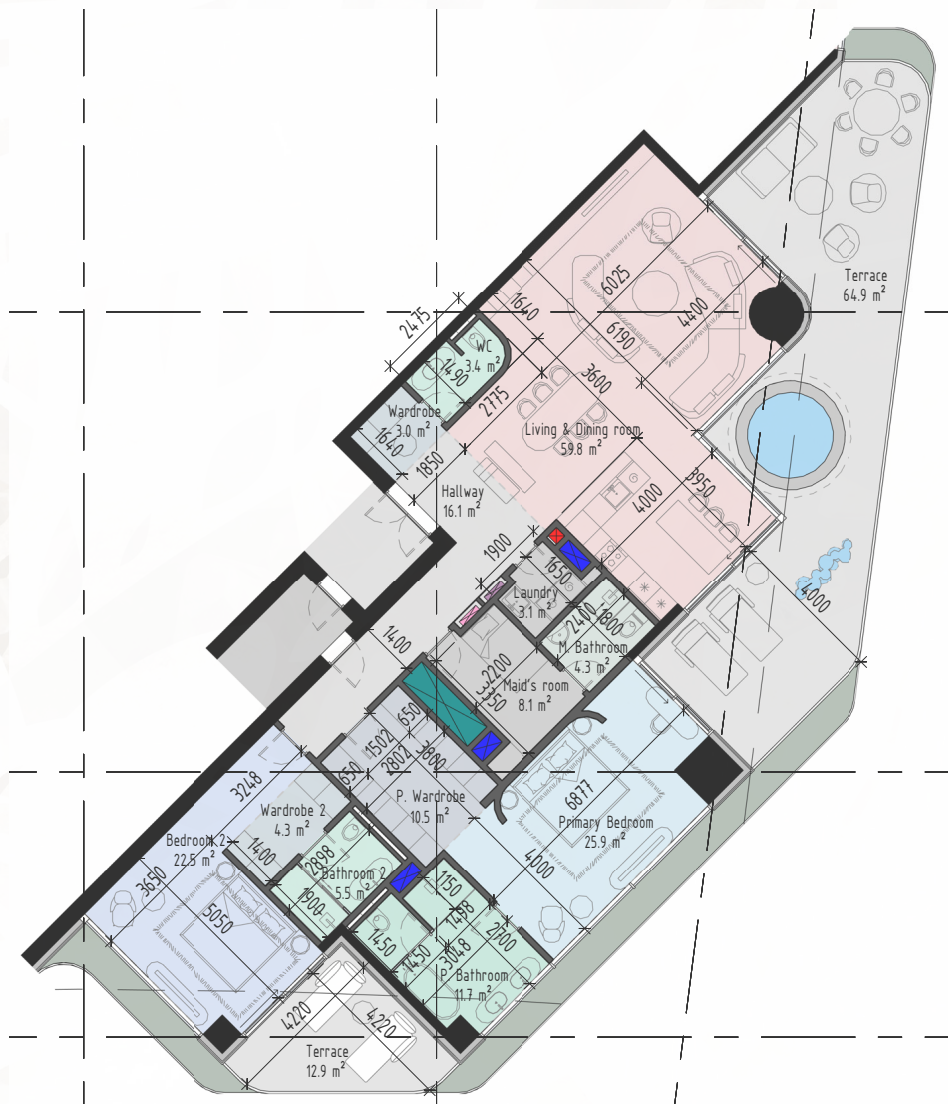


FLOOR PLAN 1. All dimensions are in imperial and metric, and measured from finish to finish excluding construction tolerances. 2. All materials, dimensions and drawings are approximate only. 3. Information is subject to change without notice, at developer's absolute discretion. 4. Actual area may vary from the stated area. 5. Drawings not to scale. 6. All images used are for illustrative purposes only and do not represent the actual size, features, specifications, fittings and furnishing. 7. The developer reserves the right to make revisions or alterations, at its absolute discretion, without any liability whatsoever.

2 BEDROOM

Type C

Internal area:	205 m ²	2207 ft ²
Terraces:	79 m ²	851 ft ²
Total area:	284m ²	3057 ft ²

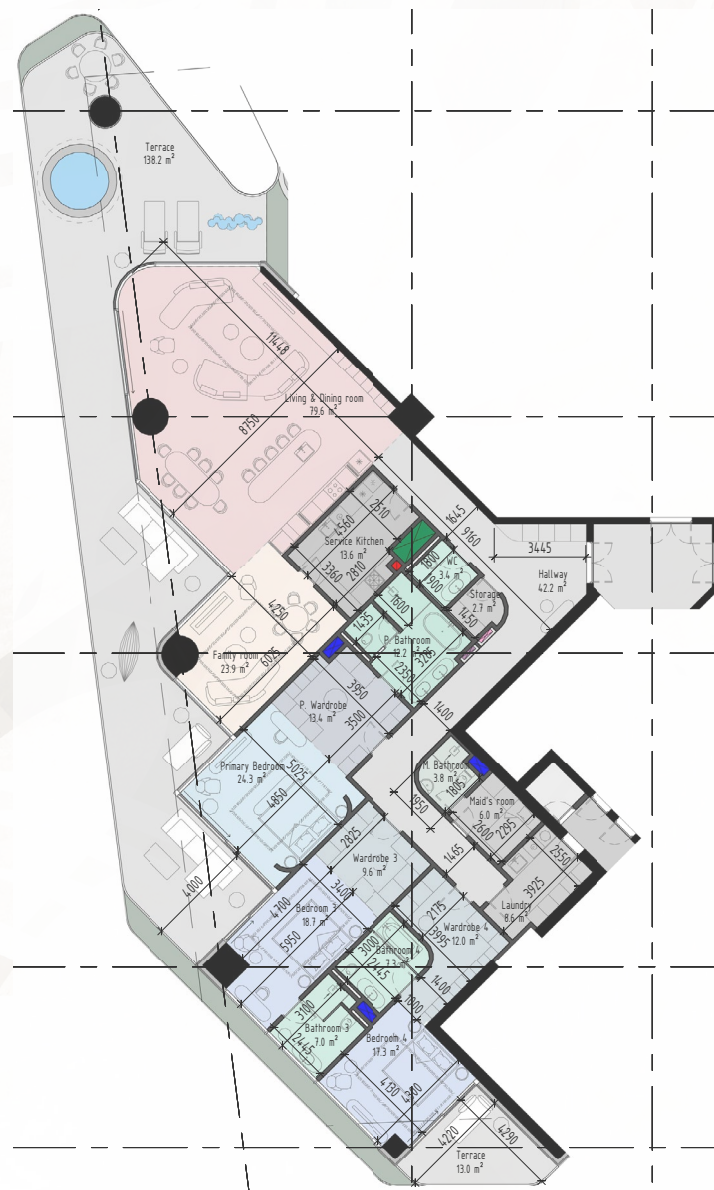


FLOOR PLAN 1. All dimensions are in imperial and metric, and measured from finish to finish excluding construction tolerances. 2. All materials, dimensions and drawings are approximate only. 3. Information is subject to change without notice, at developer's absolute discretion. 4. Actual area may vary from the stated area. 5. Drawings not to scale. 6. All images used are for illustrative purposes only and do not represent the actual size, features, specifications, fittings and furnishing. 7. The developer reserves, the right to make revisions or alterations, at its absolute discretion, without any liability whatsoever.

3 BEDROOM

Type A

Internal area:	342 m ²	3682 ft ²
Terraces:	153 m ²	1647 ft ²
Total area:	495 m ²	5329 ft ²

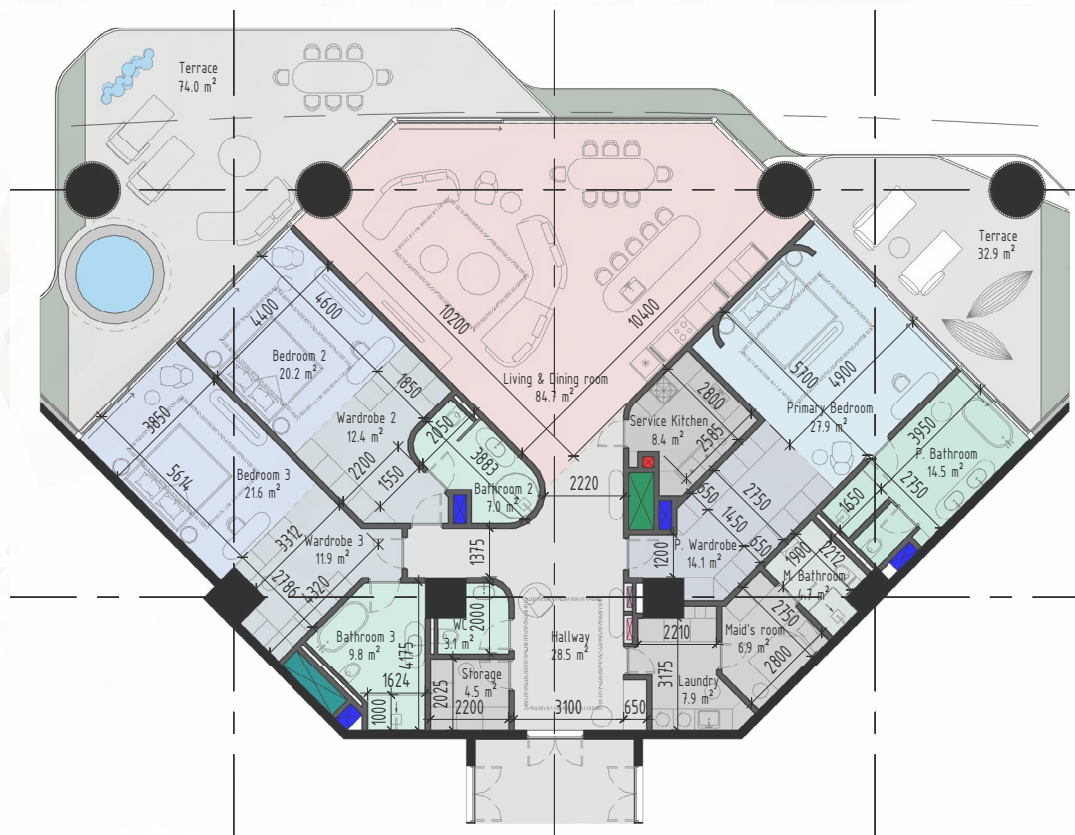
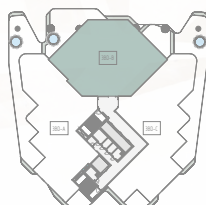
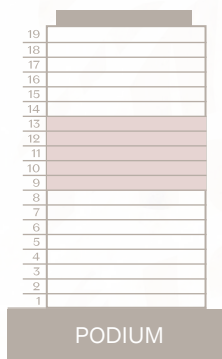


FLOOR PLAN 1. All dimensions are in imperial and metric, and measured from finish to finish excluding construction tolerances. 2. All materials, dimensions and drawings are approximate only. 3. Information is subject to change without notice, at developer's absolute discretion. 4. Actual area may vary from the stated area. 5. Drawings not to scale. 6. All images used are for illustrative purposes only and do not represent the actual size, features, specifications, fittings and furnishing. 7. The developer reserves, the right to make revisions or alterations, at its absolute discretion, without any liability whatsoever.

3 BEDROOM

Type B

Internal area:	319 m ²	3434 ft ²
Terraces:	153 m ²	1647 ft ²
Total area:	472 m ²	5081 ft ²

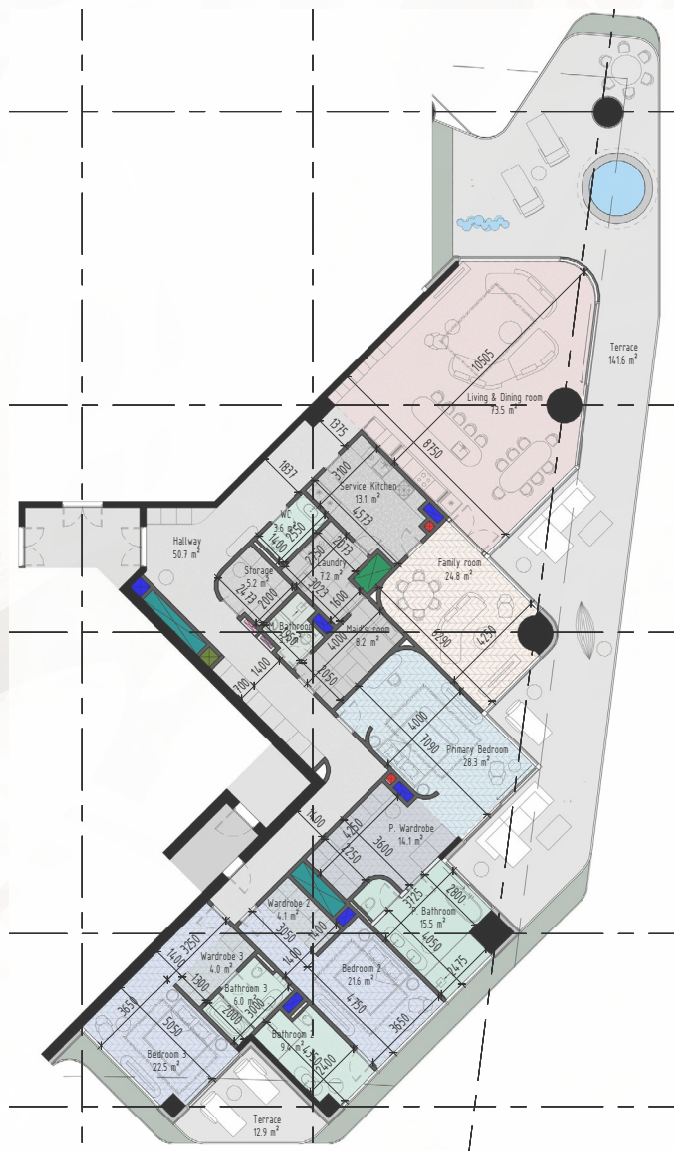
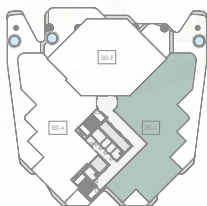


FLOOR PLAN 1. All dimensions are in imperial and metric, and measured from finish to finish excluding construction tolerances. 2. All materials, dimensions and drawings are approximate only. 3. Information is subject to change without notice, at developer's absolute discretion. 4. Actual area may vary from the stated area. 5. Drawings not to scale. 6. All images used are for illustrative purposes only and do not represent the actual size, features, specifications, fittings and furnishing. 7. The developer reserves, the right to make revisions or alterations, at its absolute discretion, without any liability whatsoever.

3 BEDROOM

Type C

Internal area:	357 m ²	3843 ft ²
Terraces:	157 m ²	1690 ft ²
Total area:	514 m ²	5533 ft ²

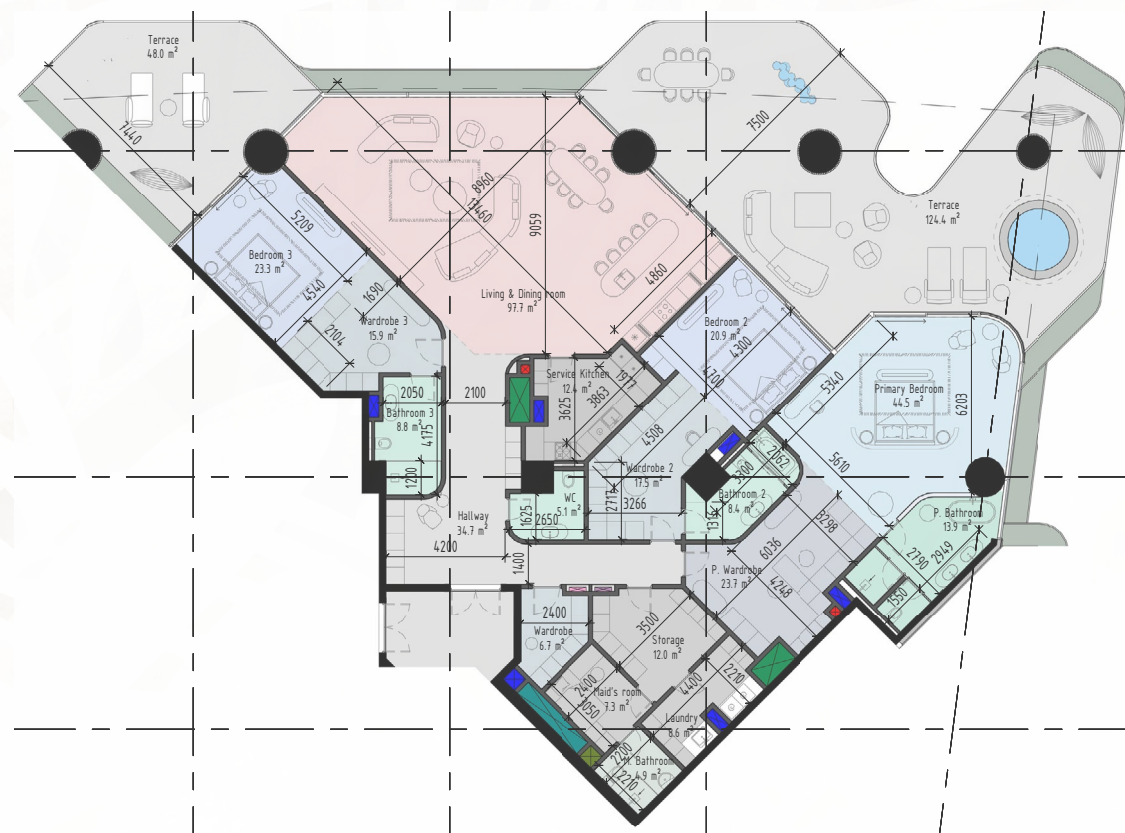
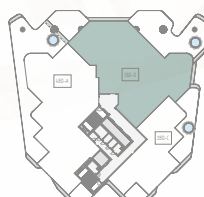
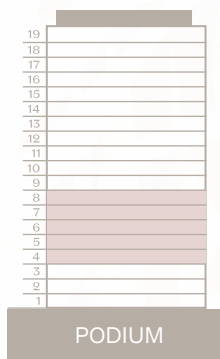


FLOOR PLAN 1. All dimensions are in imperial and metric, and measured from finish to finish excluding construction tolerances. 2. All materials, dimensions and drawings are approximate only. 3. Information is subject to change without notice, at developer's absolute discretion. 4. Actual area may vary from the stated area. 5. Drawings not to scale. 6. All images used are for illustrative purposes only and do not represent the actual size, features, specifications, fittings and furnishing. 7. The developer reserves, the right to make revisions or alterations, at its absolute discretion, without any liability whatsoever.

3 BEDROOM

Type D

Internal area:	357 m ²	3843 ft ²
Terraces:	157 m ²	1690 ft ²
Total area:	514 m ²	5533 ft ²

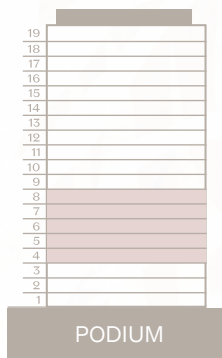


FLOOR PLAN 1. All dimensions are in imperial and metric, and measured from finish to finish excluding construction tolerances. 2. All materials, dimensions and drawings are approximate only. 3. Information is subject to change without notice, at developer's absolute discretion. 4. Actual area may vary from the stated area. 5. Drawings not to scale. 6. All images used are for illustrative purposes only and do not represent the actual size, features, specifications, fittings and furnishing. 7. The developer reserves, the right to make revisions or alterations, at its absolute discretion, without any liability whatsoever.

4 BEDROOM

Type A

Internal area:	409 m ²	4403 ft ²
Terraces:	185 m ²	1992 ft ²
Total area:	594 m ²	6394 ft ²

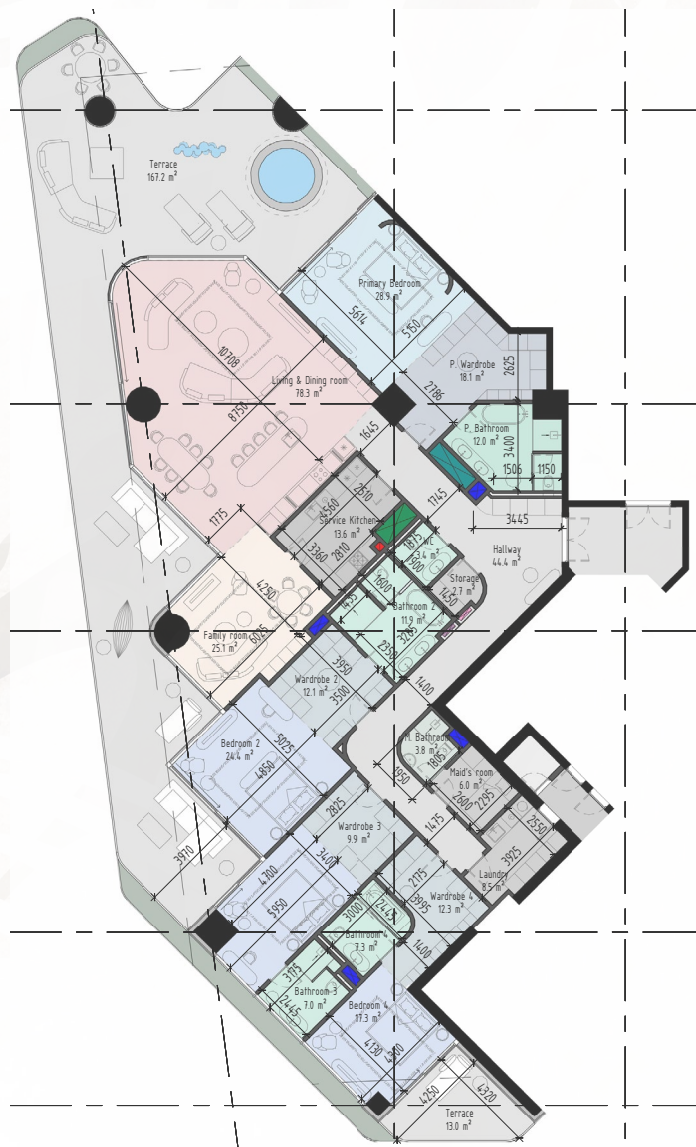
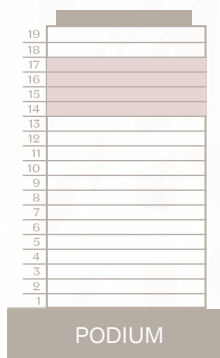


FLOOR PLAN 1. All dimensions are in imperial and metric, and measured from finish to finish excluding construction tolerances. 2. All materials, dimensions and drawings are approximate only. 3. Information is subject to change without notice, at developer's absolute discretion. 4. Actual area may vary from the stated area. 5. Drawings not to scale. 6. All images used are for illustrative purposes only and do not represent the actual size, features, specifications, fittings and furnishing. 7. The developer reserves, the right to make revisions or alterations, at its absolute discretion, without any liability whatsoever.

4 BEDROOM

Type B

Internal area:	428 m ²	4607 ft ²
Terraces:	185 m ²	1992 ft ²
Total area:	613 m ²	6599 ft ²

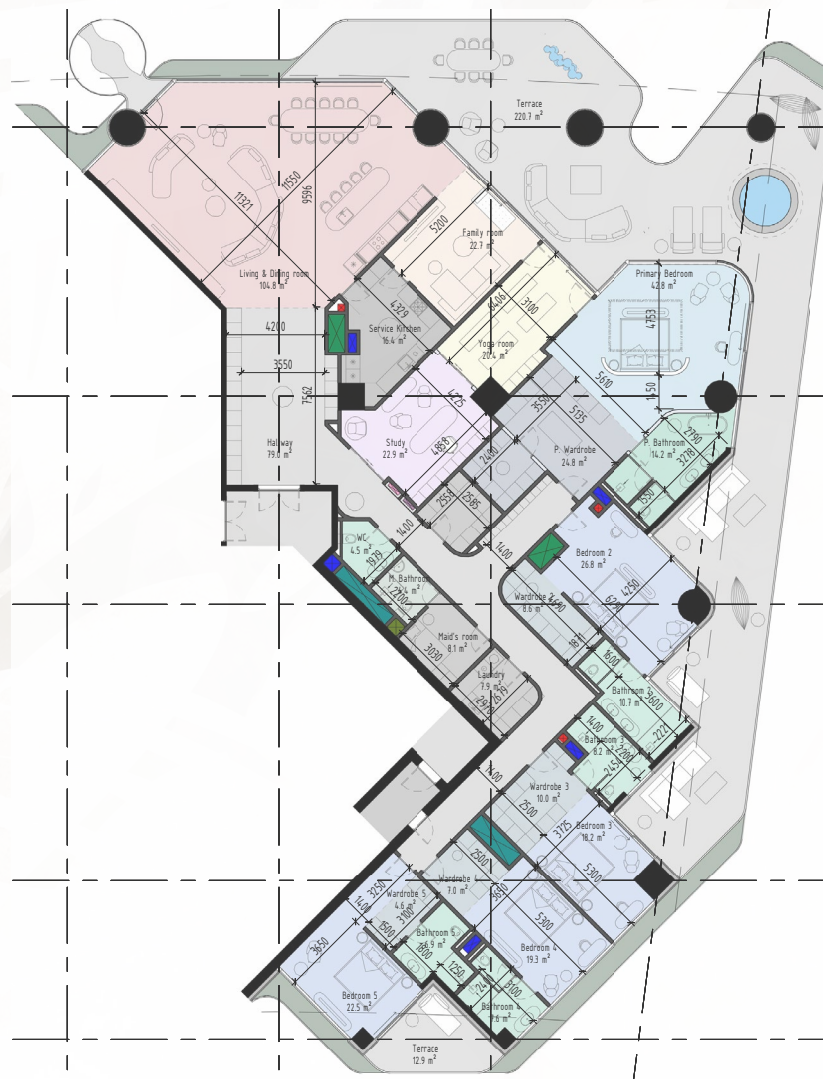
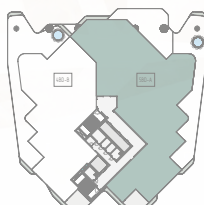
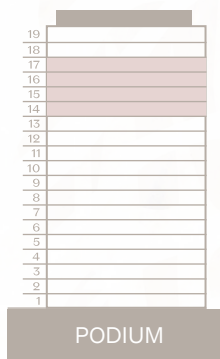


FLOOR PLAN 1. All dimensions are in imperial and metric, and measured from finish to finish excluding construction tolerances. 2. All materials, dimensions and drawings are approximate only. 3. Information is subject to change without notice, at developer's absolute discretion. 4. Actual area may vary from the stated area. 5. Drawings not to scale. 6. All images used are for illustrative purposes only and do not represent the actual size, features, specifications, fittings and furnishing. 7. The developer reserves, the right to make revisions or alterations, at its absolute discretion, without any liability whatsoever.

5 BEDROOM

Type A

Internal area:	591 m ²	6362 ft ²
Terraces:	250 m ²	2691 ft ²
Total area:	841 m ²	9053 ft ²

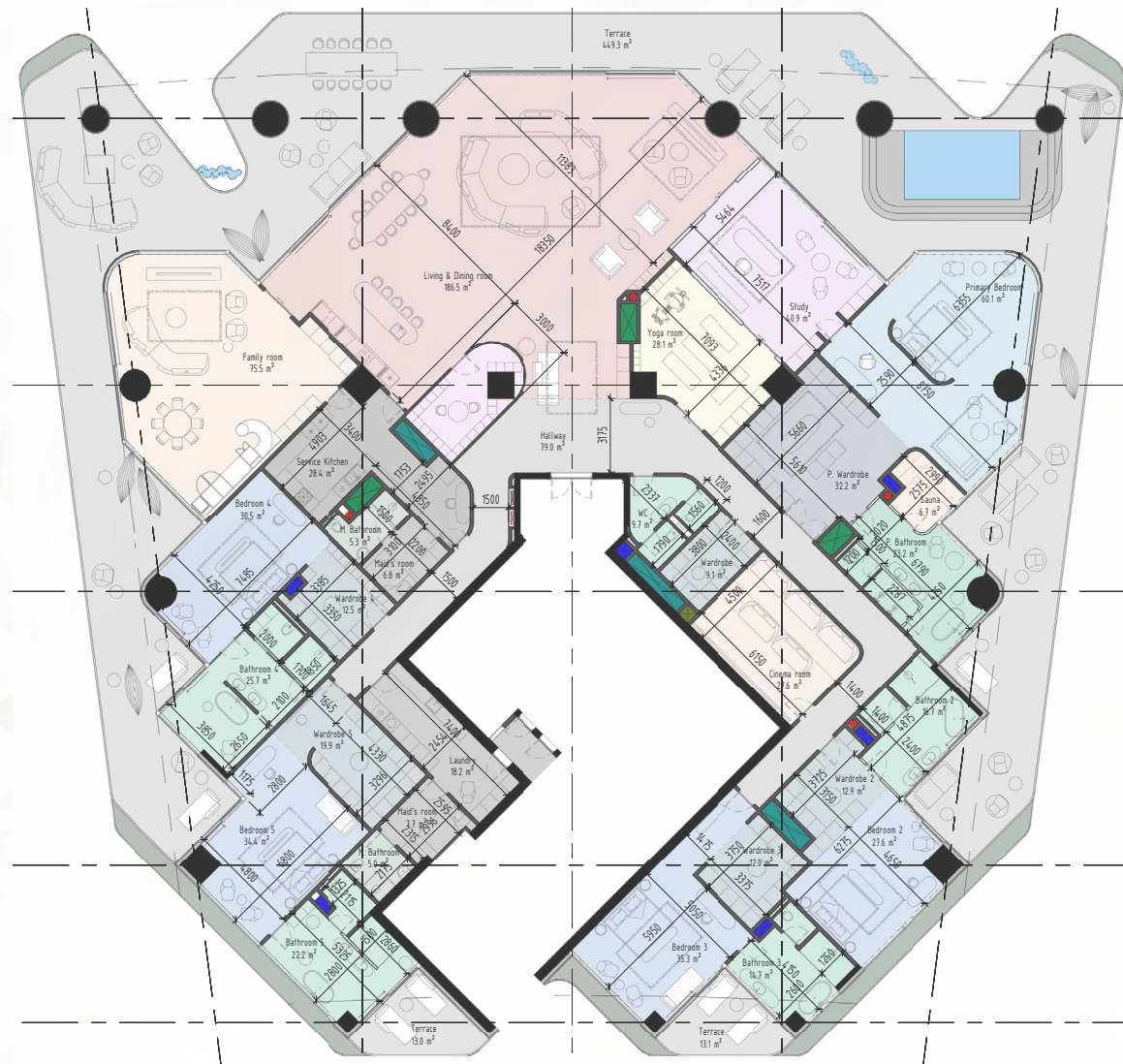
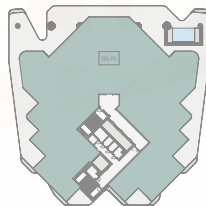


FLOOR PLAN 1. All dimensions are in imperial and metric, and measured from finish to finish excluding construction tolerances. 2. All materials, dimensions and drawings are approximate only. 3. Information is subject to change without notice, at developer's absolute discretion. 4. Actual area may vary from the stated area. 5. Drawings not to scale. 6. All images used are for illustrative purposes only and do not represent the actual size, features, specifications, fittings and furnishing. 7. The developer reserves, the right to make revisions or alterations, at its absolute discretion, without any liability whatsoever.

5 BEDROOM

Penthouse

Internal area: 1020 m² 10980 ft²
Terraces: 488 m² 5253 ft²
Total area: 1508 m² 16232 ft²



FLOOR PLAN 1. All dimensions are in imperial and metric, and measured from finish to finish excluding construction tolerances. 2. All materials, dimensions and drawings are approximate only. 3. Information is subject to change without notice, at developer's absolute discretion. 4. Actual area may vary from the stated area. 5. Drawings not to scale. 6. All images used are for illustrative purposes only and do not represent the actual size, features, specifications, fittings and furnishing. 7. The developer reserves, the right to make revisions I alterations, at it's absolute discretion, without any liability whatsoever.

PAYMENT PLAN

10%

Booking

10%

SPA Completion

10%

1st Installment
90 days from SPA

10%

2nd Installment
120 days from SPA

10%

3rd Installment
20% construction
completion

10%

4th Installment
40% construction
completion

40%

5th Installment
Handover

DEVELOPER

Ready to Embrace the Extraordinary?

Welcome to the developer and creative force behind Eywa, R.evolution. Since 1999, we've been dreaming the impossible into being – and winning awards while doing so.

Having already developed more than 2,500,000 sqft GFA of prime real estate in Latvia, Germany and Spain, Eywa introduces our signature style to Dubai.

R.EVOLUTION
REAL ESTATE DEVELOPMENT

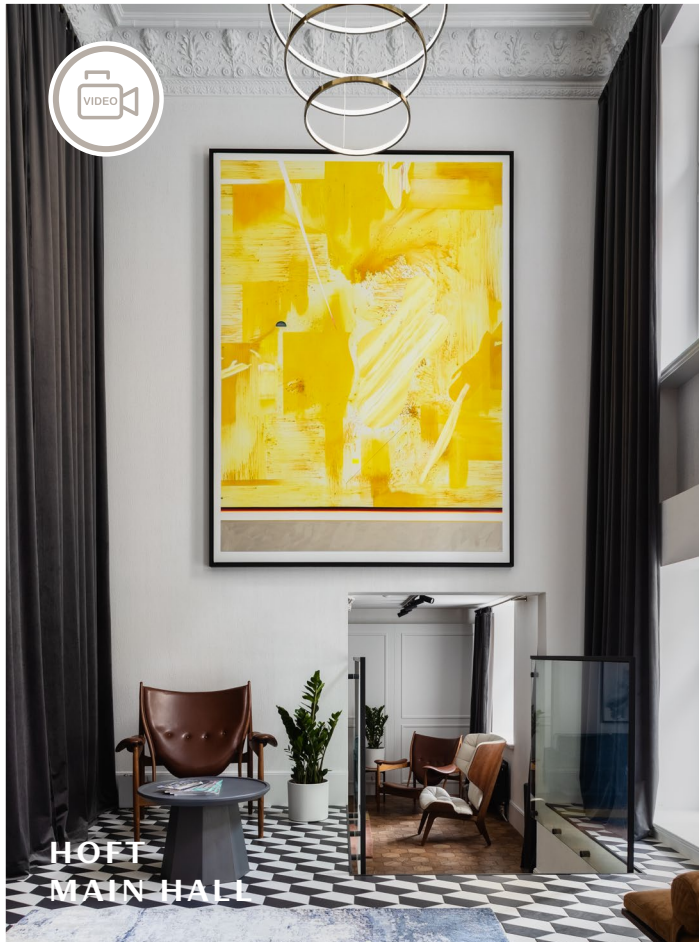
International Award Winners



BY R.EVOLUTION



BY R.EVOLUTION



OUR PARTNERS

Design Consultants

OPEN AD
architecture
bureau



Cost Consultants



Capital Advisor



Financing bank in UAE



LDC / Supervision Consultants



Marketing & Branding



Vastu-Shastras Consultants



Interior Design Consultants



Legal Adviser

التميمي و شركاه
ALTAMIMI & CO.

Exclusive Sales Agency



PR Agency





عائفة

DUBAI

CHRISTIE'S
INTERNATIONAL REAL ESTATE

— DUBAI —

CONTACTS:

Faheem Kakroo +971 55 865 0919

eywa@christiesrealestate.com