

— W I L T O N —

— T E R R A C E S —



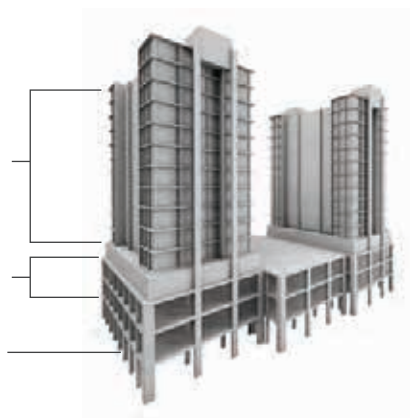
— I N D U L G E B Y D E S I G N —

CONFIGURATION

12 Residential floors

2 Podium levels

Ground floor



ELEVATORS

2 Passenger Elevators per tower

1 Service Elevator per tower

AMENITIES WITHIN THE PROJECT

Swimming pool

Outdoor barbecue

Fully equipped gymnasium and changing rooms

Library lounge

Indoor and outdoor kids play area

Lobby lounge area for business and personal meetings

OWNERSHIP

Freehold

ANTICIPATED COMPLETION DATE

Q4 2020

ANTICIPATED SERVICE CHARGE

AED 14 per sq.ft.

SIZE RANGE PER UNIT TYPE

Wilton Terraces 1

1 bedroom: Ranges from 783 sq.ft to 839 sq.ft.

2 bedrooms: Ranges from 1193 sq.ft to 1626 sq.ft.

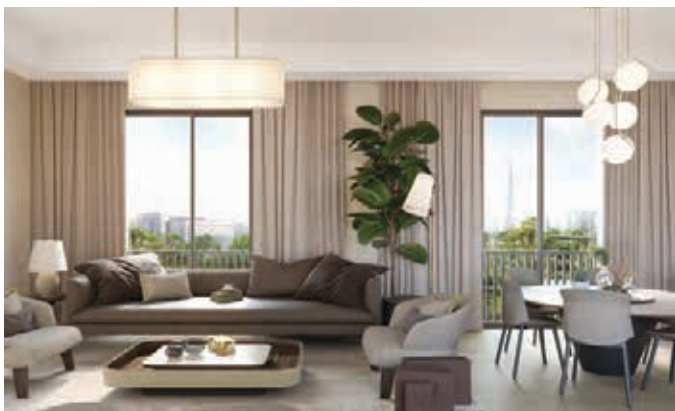
Wilton Terraces 2

1 bedroom: Ranges from 785 sq.ft to 849 sq.ft.

2 bedrooms: Ranges from 1191 sq.ft to 1714 sq.ft.

LOCATION

- 2 min from Meydan Racecourse.
- 5 min from Meydan One Mall, the future biggest mall in the world.
- 5 min from Burj Khalifa and Downtown Dubai.
- 5 min from Dubai International Financial Centre.
- 6 min to Dubai World Trade Centre.
- 12 min from Dubai International Airport.



PARKING

1 Parking Space per unit

NUMBER OF UNITS PER TYPE	STARTING PRICES PER UNIT TYPE
-----------------------------	----------------------------------

Wilton Terraces 1	
1 bedroom - 92 units	AED 1,002,828
2 bedrooms - 48 units	AED 1,410,828
Wilton Terraces 2	
1 bedroom - 95 units	AED 1,040,828
2 bedrooms - 48 units	AED 1,491,828

PAYMENT PLAN

10%

Upon signature of this reservation agreement

10%

On completion of forty five percent (45%) construction of the Project

5%

On completion of fifty percent (50%) construction of the Project

10%

On completion of fifty five percent (55%) construction of the Project

5%

On completion of sixty percent (60%) construction of the Project

5%

On completion of sixty five percent (65%) construction of the Project

5%

On completion of seventy percent (70%) construction of the Project

50%

On Completion



UNIT FEATURES

- Heightened 3.2m ceilings in living rooms and bedrooms
- Finely crafted & fitted wardrobes with walk-in closets and dressing rooms
- Custom design kitchen cabinetry, wood laminate and lacquer finishes and elegant metal fittings
- Professional-standard appliances featuring international brand.
- Quiet and energy saving gas cooktop, stainless steel oven, ventilation hood, microwave, fridge freezer and dishwasher
- Kitchen faucet with pull out sprayer, from a quality international brand
- Designer line faucets, sinks and accessories from a quality international brand.
- Generous walk-in showers and storage space
- Premium tile floors throughout the unit

ESCROW DETAILS

Account Name: Wilton Terraces

Bank Name: ADIB

Account No: 28154537

IBAN: AE850500000000028154537

Swift Code: ABDIAEAD

Bank Address: Dubai Internet City, Dubai, UAE

For booking or any further enquiries contact us on agent@ellingtongroup.com, or contact your Property Consultant directly.