

UNIQUE SARAY  
DEVELOPMENT



SARAY

PRIME

R E S I D E N C E S





UNIQUE SARAY  
DEVELOPMENT





UNIQUE SARAY  
DEVELOPMENT



## Key features:

Live minutes away from the heart of Dubai, with direct views of one of the most prestigious upcoming communities.

- Studio, 1-bedroom and 2-bedroom apartments plus rooftop ranging from 350sq.ft – 1455sq.ft
- Open and flowing interiors with refined finishings
- Direct views of Haven by Aldar- premium wellness – focused community
- Countless amenities for residents to enjoy including nature play areas, community pools, barbeque areas, meditation areas, fitness zones, multipurpose lawns
- Close proximity to major landmarks in the city

## Location benefits :

- 18 minutes to Dubai International Airport (DXB)
- 25 minutes to Maktoum Airport
- 22 minutes to Burj al Arab
- 25 minutes to JBR
- 15 minutes to Miracle Garden
- 10 minutes to Global Village
- 7 minutes to IMG World
- 18 minutes to Burj Khalifa & Dubai Mall
- 25 minutes to Mall of the Emirates

## الميزات الرئيسية :

عش على بعد دقائق من قلب دبي. مع إطلالات مباشرة على أحد أكثر المجتمعات المرتقبة تميزاً

- شقق استوديو، غرفة نوم واحدة، وغرفتي نوم بالإضافة إلى السطح، بمساحات تتراوح من 350 قدم<sup>2</sup> إلى 1455 قدم<sup>2</sup>
- تصاميم داخلية مفتوحة وانسيابية بتشطيبات راقية
- من شركة الدار - مجتمع فاخر يركز على الصحة والرفاهية HAVEN إطلالات مباشرة على مشروع
- عدد لا يحصى من المرافق التي يمكن للمقيمين الاستمتاع بها بما في ذلك مناطق لعب الطبيعة، مساح مجتمعية، مناطق للشواء، مناطق للتأمل، مناطق لياقة بدنية، ومساحات متعددة الاستخدامات قرب مباشر من أبرز معالم المدينة.

## المزايا حسب الموقع :

- ١٨ دقيقة إلى مطار دبي الدولي
- ٢٥ دقيقة إلى مطار آل مكتوم
- ٢٢ دقيقة إلى برج العرب
- ٢٥ دقيقة إلى جميرا بيتش ريزيدنس
- ١٥ دقيقة إلى حديقة المعجزة
- ١٠ دقائق إلى القرية العالمية
- ٧ دقائق إلى أي إم جي عالم من المغامرات
- ١٨ دقيقة إلى برج خليفة ودبي مول
- ٢٥ دقيقة إلى مول الإمارات



# TYPICAL FLOOR PLAN





SARAY  
PRIME2 BEDROOM APARTMENT -  
PRIVATE POOL + MAID ROOM

غرفتي نوم مع مسبح خاص و غرفة خادمة

TOTAL AREA: 129.46 SQM / 1393.52 SQFT

المساحة الإجمالية ١٢٩,٤٦ مترا مربعا / ١٣٩٣,٥٢ قدما مربعا

02  
BEDROOM03  
BATHROOMSMART HOME  
SYSTEM

## NOTES:

- Measurements shown are approximate and excluding construction tolerances.
- Actual plot and unit dimensions may differ from those shown in this Form.
- All images and schematics are for illustrative purposes only, and may not accurately represent the final design, layout, or feature of the project.
- Unless otherwise specified, all furniture, fittings, and interior items shown are for illustration only and may not be included in the handover check list.
- Landscaping, exterior finishes, and surrounding infrastructure depicted in illustration are subject to change and may not exactly match the final delivered product.
- Additional costs for upgrades, modifications, or customizations that maybe requested by the buyer will be detailed in a separate agreement.



UNIQUE SARAY  
DEVELOPMENT

SARAY  
PRIME

## 1 BEDROOM-PRIVATE POOL

غرفة نوم واحدة مع مسبح خاص

TOTAL AREA: 80.12 SQM / 862.38 SQFT

٨٠,١٢ مترا مربعا ٨٦٢,٣٨ قدما مربعا

المساحة الإجمالية

01  
BEDROOM02  
BATHROOMSMART HOME  
SYSTEM

## NOTES:

- Measurements shown are approximate and excluding construction tolerances.
- Actual plot and unit dimensions may differ from those shown in this Form.
- All images and schematics are for illustrative purposes only, and may not accurately represent the final design, layout, or feature of the project.
- Unless otherwise specified, all furniture, fittings, and interior items shown are for illustration only and may not be included in the handover check list.
- Landscaping, exterior finishes, and surrounding infrastructure depicted in illustration are subject to change and may not exactly match the final delivered product.
- Additional costs for upgrades, modifications, or customizations that maybe requested by the buyer will be detailed in a separate agreement.



SARAY  
PRIME

## 1 BEDROOM APARTMENT

غرفة نوم واحدة

TOTAL AREA:	68.66 SQM / 739.02 SQFT	
	٦٨,٦٦ متراً مربعاً / ٧٣٩,٠٢ قدماً مربعاً	المساحة الإجمالية

01  
BEDROOM02  
BATHROOMSMART HOME  
SYSTEM

## NOTES:

- Measurements shown are approximate and excluding construction tolerances.
- Actual plot and unit dimensions may differ from those shown in this Form.
- All images and schematics are for illustrative purposes only, and may not accurately represent the final design, layout, or feature of the project.
- Unless otherwise specified, all furniture, fittings, and interior items shown are for illustration only and may not be included in the handover check list.
- Landscaping, exterior finishes, and surrounding infrastructure depicted in illustration are subject to change and may not exactly match the final delivered product.
- Additional costs for upgrades, modifications, or customizations that maybe requested by the buyer will be detailed in a separate agreement.



UNIQUE SARAY  
DEVELOPMENT



SARAY  
PRIME

## 1 BEDROOM - PRIVATE JACUZZI

غرفة نوم مع جاكوزي

TOTAL AREA:	73.31 SQM / 789.05 SQFT	
	٧٣,٣١ متراً مربعاً / ٧٨٩,٠٥ قدماً مربعاً	المساحة الإجمالية



01

BEDROOM



02

BATHROOM

SMART HOME  
SYSTEM

## NOTES:

- Measurements shown are approximate and excluding construction tolerances.
- Actual plot and unit dimensions may differ from those shown in this Form.
- All images and schematics are for illustrative purposes only, and may not accurately represent the final design, layout, or feature of the project.
- Unless otherwise specified, all furniture, fittings, and interior items shown are for illustration only and may not be included in the handover check list.
- Landscaping, exterior finishes, and surrounding infrastructure depicted in illustration are subject to change and may not exactly match the final delivered product.
- Additional costs for upgrades, modifications, or customizations that maybe requested by the buyer will be detailed in a separate agreement.

SARAY  
PRIME

## PRESIDENTIAL STUDIO - PRIVATE JACUZZI

استوديو رئيسي مع جاكوزي

TOTAL AREA:

49.29 SQM / 530.54 SQFT

المساحة الإجمالية ٤٩,٢٩ مترا مربعا / ٥٣٠,٥٤ قدما مربعا

01

BATHROOM

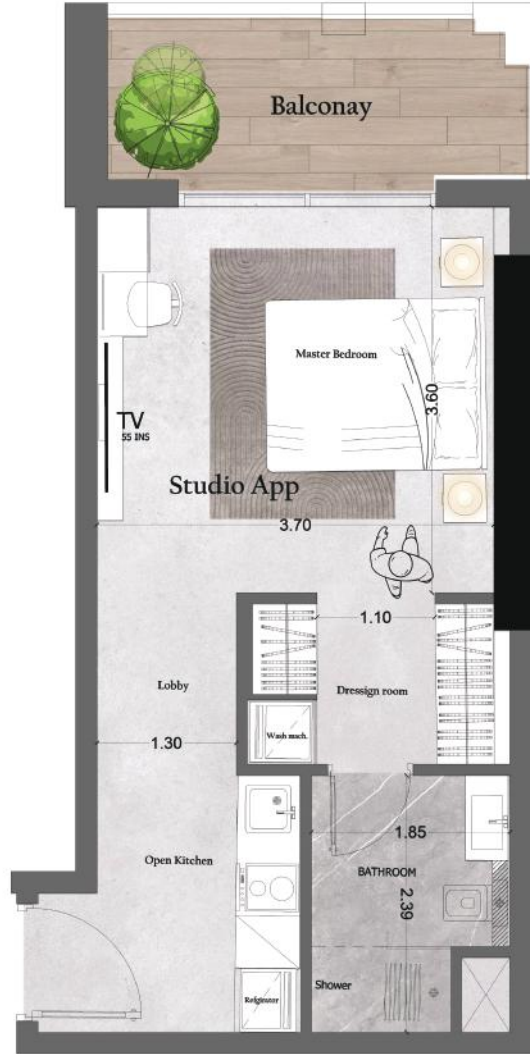
SMART HOME  
SYSTEM

## NOTES:

- Measurements shown are approximate and excluding construction tolerances.
- Actual plot and unit dimensions may differ from those shown in this Form.
- All images and schematics are for illustrative purposes only, and may not accurately represent the final design, layout, or feature of the project.
- Unless otherwise specified, all furniture, fittings, and interior items shown are for illustration only and may not be included in the handover check list.
- Landscaping, exterior finishes, and surrounding infrastructure depicted in illustration are subject to change and may not exactly match the final delivered product.
- Additional costs for upgrades, modifications, or customizations that maybe requested by the buyer will be detailed in a separate agreement.





SARAY  
PRIME

## STUDIO APARTMENT

استوديو

TOTAL AREA:	40.55 SQM / 436.42 SQFT	
	٤٠,٥٥ مترا مربعا / ٤٣٦,٤٢ قدما مربعا	المساحة الإجمالية

01   
BATHROOM  
SMART HOME  
SYSTEM

## NOTES:

- Measurements shown are approximate and excluding construction tolerances.
- Actual plot and unit dimensions may differ from those shown in this Form.
- All images and schematics are for illustrative purposes only, and may not accurately represent the final design, layout, or feature of the project.
- Unless otherwise specified, all furniture, fittings, and interior items shown are for illustration only and may not be included in the handover check list.
- Landscaping, exterior finishes, and surrounding infrastructure depicted in illustration are subject to change and may not exactly match the final delivered product.
- Additional costs for upgrades, modifications, or customizations that maybe requested by the buyer will be detailed in a separate agreement.



SARAY  
PRIME

## STUDIO APARTMENT

استوديو

TOTAL AREA:	30.35 SQM / 326.65 SQFT	
	٣٠,٣٥ مترا مربعا / ٣٢٦,٦٥ قدما مربعا	المساحة الإجمالية

01   
BATHROOM  
SMART HOME  
SYSTEM

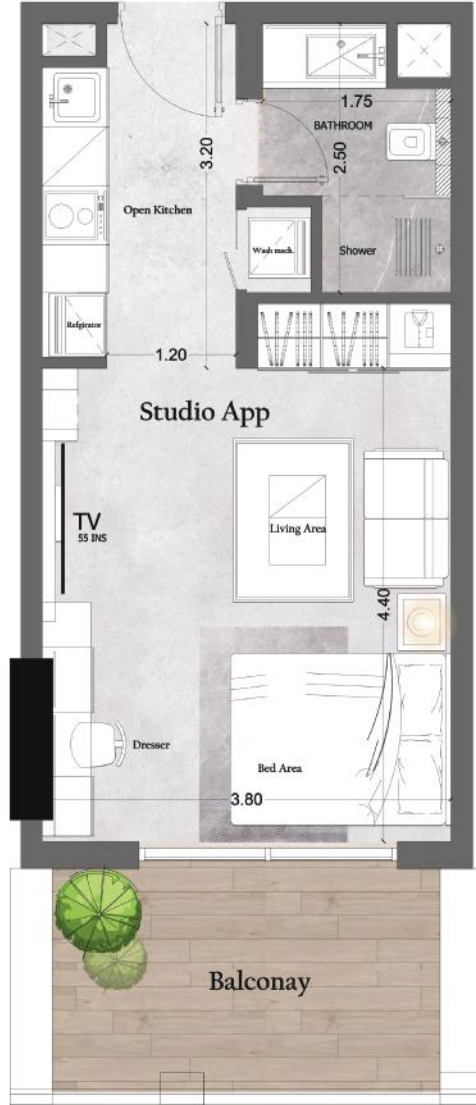
## NOTES:

- Measurements shown are approximate and excluding construction tolerances.
- Actual plot and unit dimensions may differ from those shown in this Form.
- All images and schematics are for illustrative purposes only, and may not accurately represent the final design, layout, or feature of the project.
- Unless otherwise specified, all furniture, fittings, and interior items shown are for illustration only and may not be included in the handover check list.
- Landscaping, exterior finishes, and surrounding infrastructure depicted in illustration are subject to change and may not exactly match the final delivered product.
- Additional costs for upgrades, modifications, or customizations that maybe requested by the buyer will be detailed in a separate agreement.



UNIQUE SARAY  
DEVELOPMENT



SARAY  
PRIME


## STUDIO APARTMENT

استوديو

TOTAL AREA:

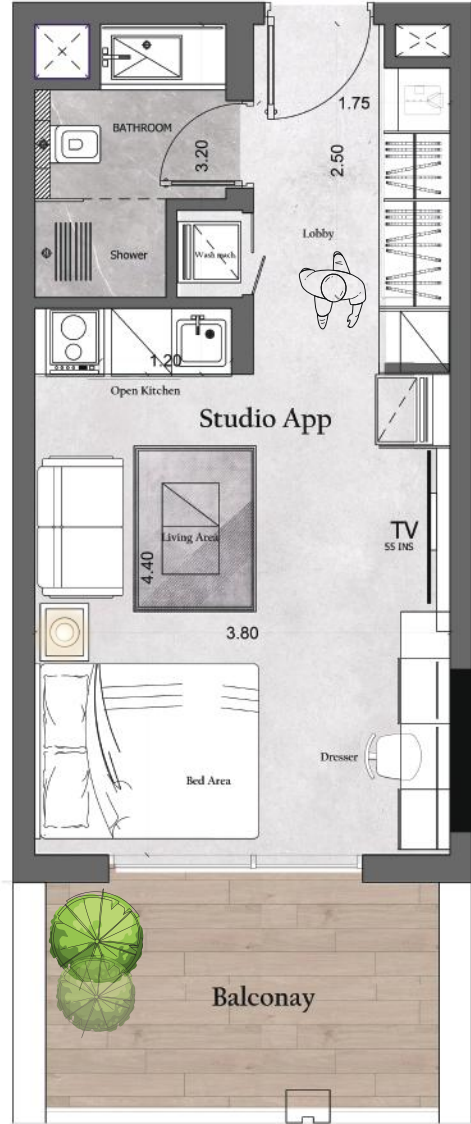
38.68 SQM / 416.35 SQFT

المساحة الإجمالية ٣٨,٦٨ مترا مربعا / ٤١٦,٣٥ قدما مربعا

01   
BATHROOM  
SMART HOME  
SYSTEM

## NOTES:

- Measurements shown are approximate and excluding construction tolerances.
- Actual plot and unit dimensions may differ from those shown in this Form.
- All images and schematics are for illustrative purposes only, and may not accurately represent the final design, layout, or feature of the project.
- Unless otherwise specified, all furniture, fittings, and interior items shown are for illustration only and may not be included in the handover check list.
- Landscaping, exterior finishes, and surrounding infrastructure depicted in illustration are subject to change and may not exactly match the final delivered product.
- Additional costs for upgrades, modifications, or customizations that maybe requested by the buyer will be detailed in a separate agreement.



# SARAY

## PRIME

### STUDIO APARTMENT

استوديو

TOTAL AREA: 38.68 SQM / 416.35 SQFT

المساحة الإجمالية ٣٨,٦٨ مترا مربعا / ٤١٦,٣٥ قدما مربعا

01  BATHROOM

 SMART HOME SYSTEM



#### NOTES:

- Measurements shown are approximate and excluding construction tolerances.
- Actual plot and unit dimensions may differ from those shown in this Form.
- All images and schematics are for illustrative purposes only, and may not accurately represent the final design, layout, or feature of the project.
- Unless otherwise specified, all furniture, fittings, and interior items shown are for illustration only and may not be included in the handover check list.
- Landscaping, exterior finishes, and surrounding infrastructure depicted in illustration are subject to change and may not exactly match the final delivered product.
- Additional costs for upgrades, modifications, or customizations that maybe requested by the buyer will be detailed in a separate agreement.









UNIQUE SARAY  
DEVELOPMENT