

The background of the image is a deep blue with a pattern of soft, white, wavy lines that resemble ripples on the surface of water. The lines flow diagonally from the top-left towards the bottom-right, creating a sense of movement and depth.

BLUEWATERS *bay*



A SEASIDE ADDRESS UNLIKE ANY OTHER

Surrounded by Bluewaters island, The Palm and JBR, Bluewaters Bay is set to be the new benchmark in waterfront living.

CONNECTIVITY

It's unique location in one of the popular areas the city enables residents to access well established destinations and iconic landmarks in Dubai through major highways, road networks and pedestrian friendly connections.



5

MINUTE WALK FROM
BLUEWATERS ISLAND

10

MINUTE WALK FROM
THE BEACH at JBR

5

MINUTE DRIVE FROM
DUBAI MARINA

10

MINUTE DRIVE FROM
THE PALM

15

MINUTE DRIVE FROM
DOWNTOWN DUBAI

30

MINUTE DRIVE FROM
DUBAI INTERNATIONAL
AIRPORT



BLUEWATERS BAY

Conceived to reimagine resort inspired lifestyle, Bluewaters Bay epitomizes a new version of luxury seaside living. The design is inspired by the Dubai lifestyle capturing the spectacular waterfront and city views



MAIN FACILITIES

GENEROUS & WELCOMING
MAIN ARRIVAL
DROP- OFF AREAS

ELEVATED
COMMUNITY
GARDEN

INFINITY POOL
WITH FABULOUS
SEA-VIEWS

CLOSE TO
DAYCARE CENTRES &
COMMUNITY STORES

SPECTACUL
AR TENNIS
COURT

SHADED KIDS
SWIMMING POOL
& PLAY AREA

LONG
WALKWAYS &
JOGGING
PATHS

LUSH
LANDSCAPES &
BBQ AREA

BLUEWATERS *bay*

THE LIFESTYLE



GENEROUS AND WELCOMING EXPERIENCE AT THE MAIN ARRIVAL LEVEL



ELEVATED COMMUNITY GARDENS AND PROMENADE WALKWAY LEADING TO AIN DUBAI
AND THE BEACH at JBR



RESORT-STYLE INFINITY POOL WITH BREATH-TAKING VIEWS OF THE SEA AND AIN DUBAI



SPACIOUS OPEN AREAS AND OUTDOOR SEATING SURROUNDED BY AWE-INSPIRING VIEWS OF THE SEA AND SKYLINE



WELL-EQUIPPED FITNESS CENTRE AND OUTDOOR EXERCISE AREA TO PROMOTE A HEALTHY LIFESTYLE



OBSERVATION DECK AT THE TOP CAPTURING VIEWS OF THE ICONIC DUBAI WATERFRONT



SPECTACULAR TENNIS COURT AND SHADED KIDS PLAY AREAS



BALCONY VIEW OVERLOOKING THE INFINITY POOL WITH REMARKABLE VIEWS OF THE SEA, AIN DUBAI AND SKYLINE



SPACIOUS BALCONIES OVERLOOKING THE SEA, AIN DUBAI AND DUBAI WATERFRONT



MAGICAL SUNSET VIEWS FROM YOUR PRIVATE LIVING SPACE

BLUEWATERS *bay*

THE ELEGANT
INTERIORS



A GRAND AND INVITING ENTRANCE EXPERIENCE THROUGH THE MAIN LOBBY



SPACIOUS LAYOUTS WITH PANORAMIC VIEWS OF THE SEA AND DUBAI WATERFRONT



CONTEMPORARY LIVING ENHANCED BY SUPERIOR KITCHEN LAYOUTS
AND FINISHES



RELAXING MASTER BEDROOM WITH PANORAMIC VIEWS OVERLOOKING THE SEA

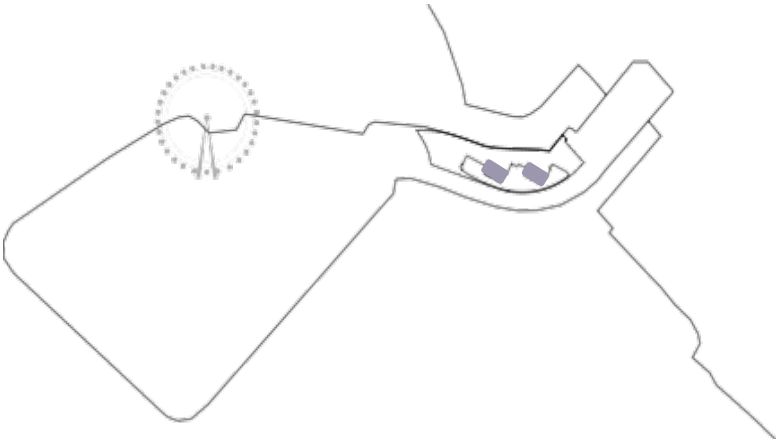
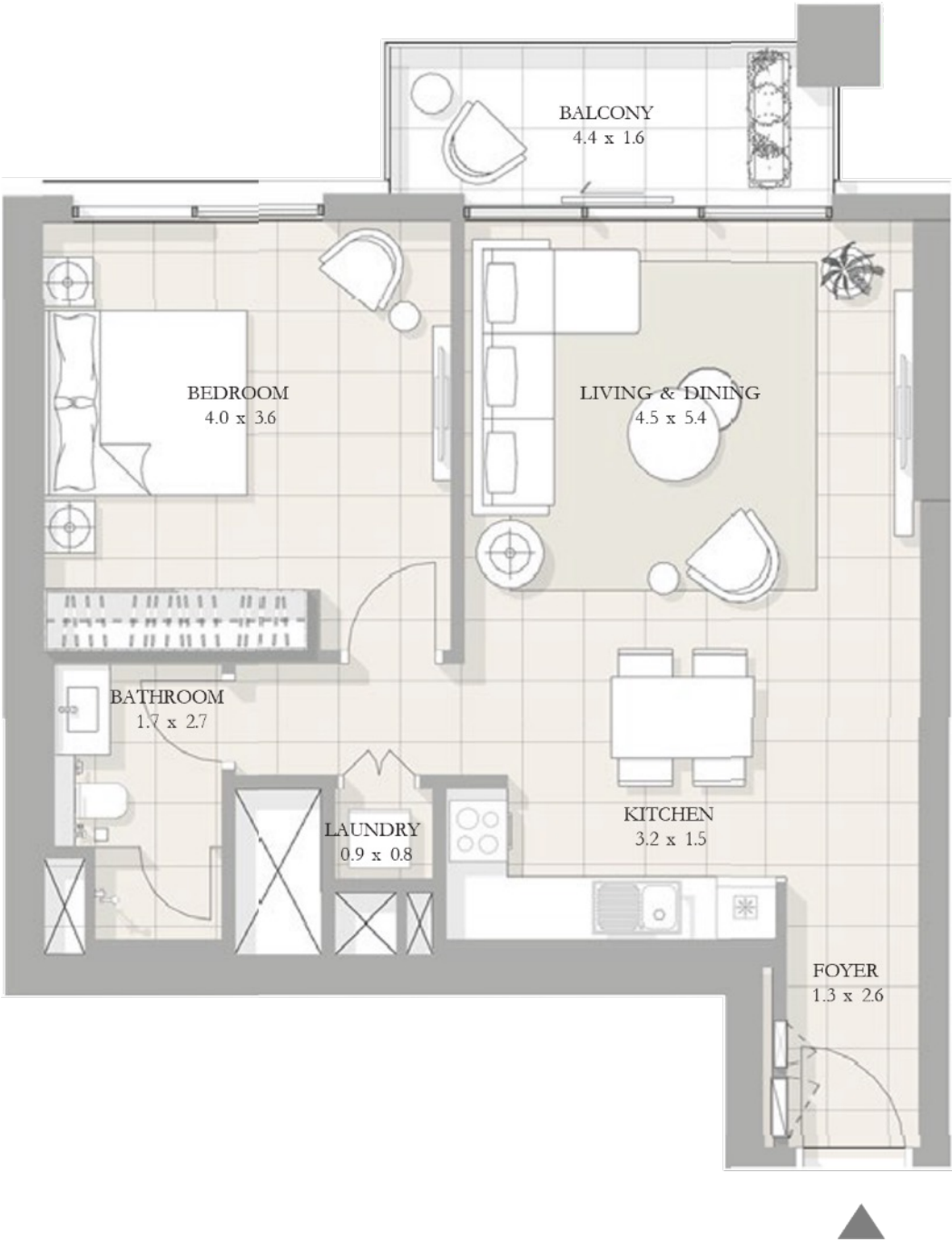
UPGRADED FINISHES AND MODERN FEATURES IN THE BATHROOMS



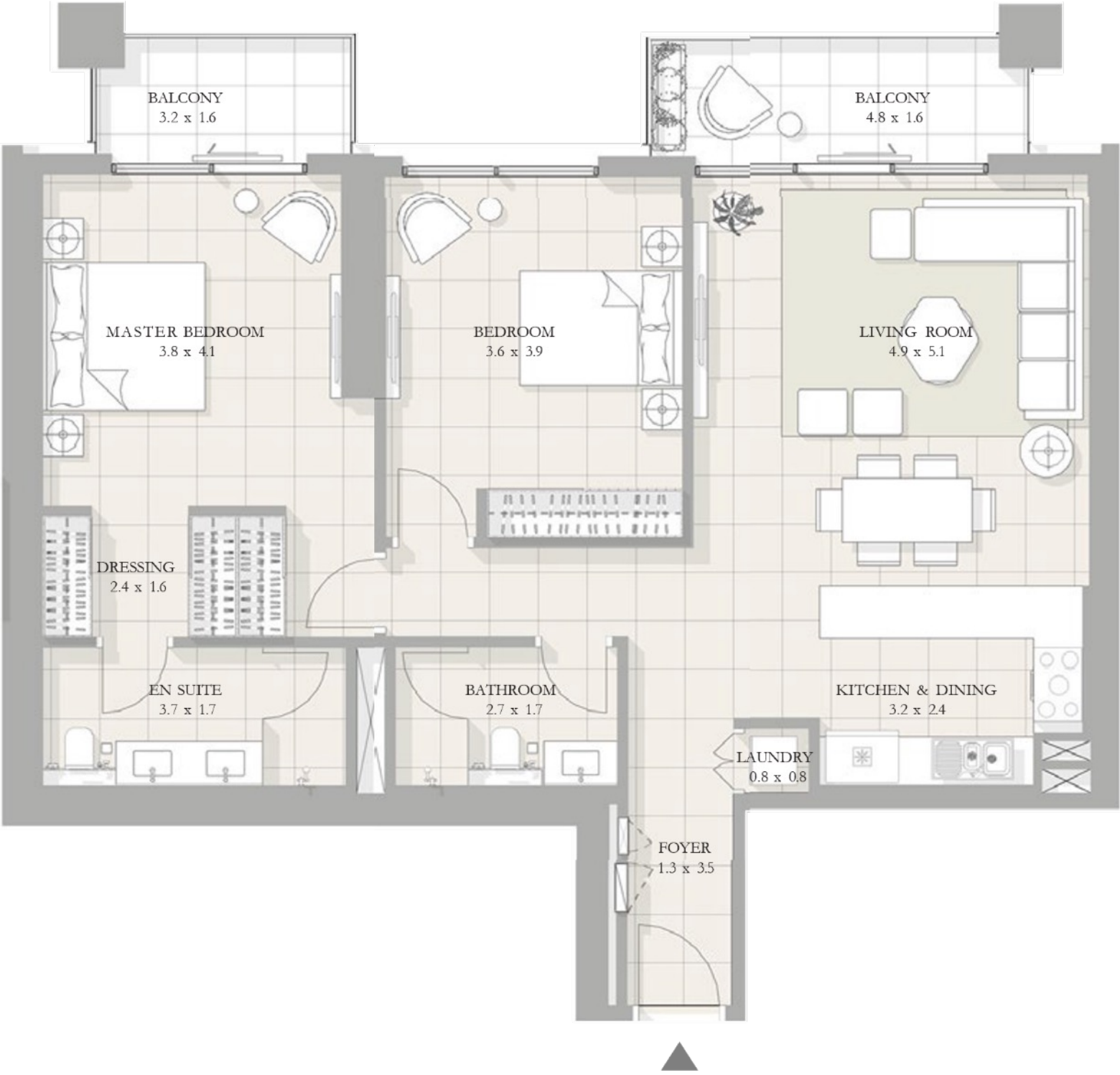
BLUEWATERS *bay*

FLOOR PLANS

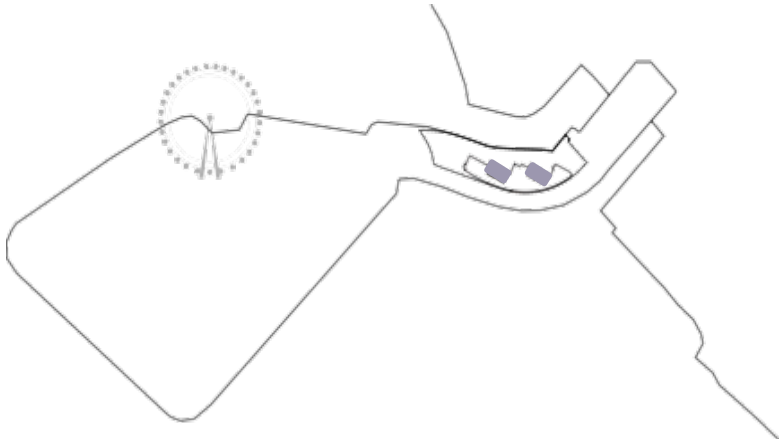
BLUEWATERS *bay*



1-BEDROOM

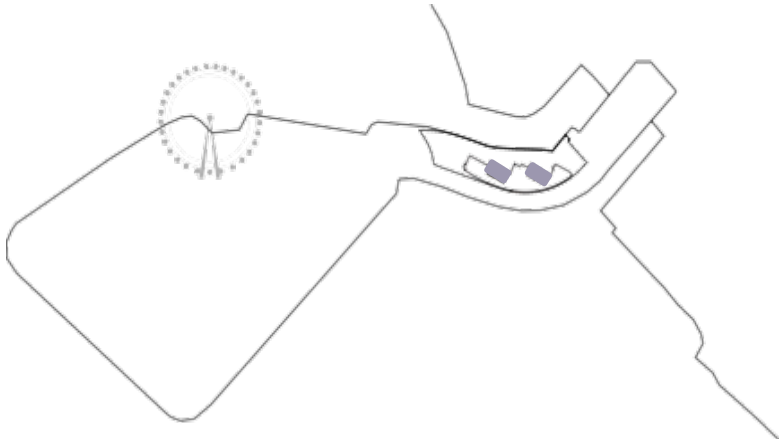
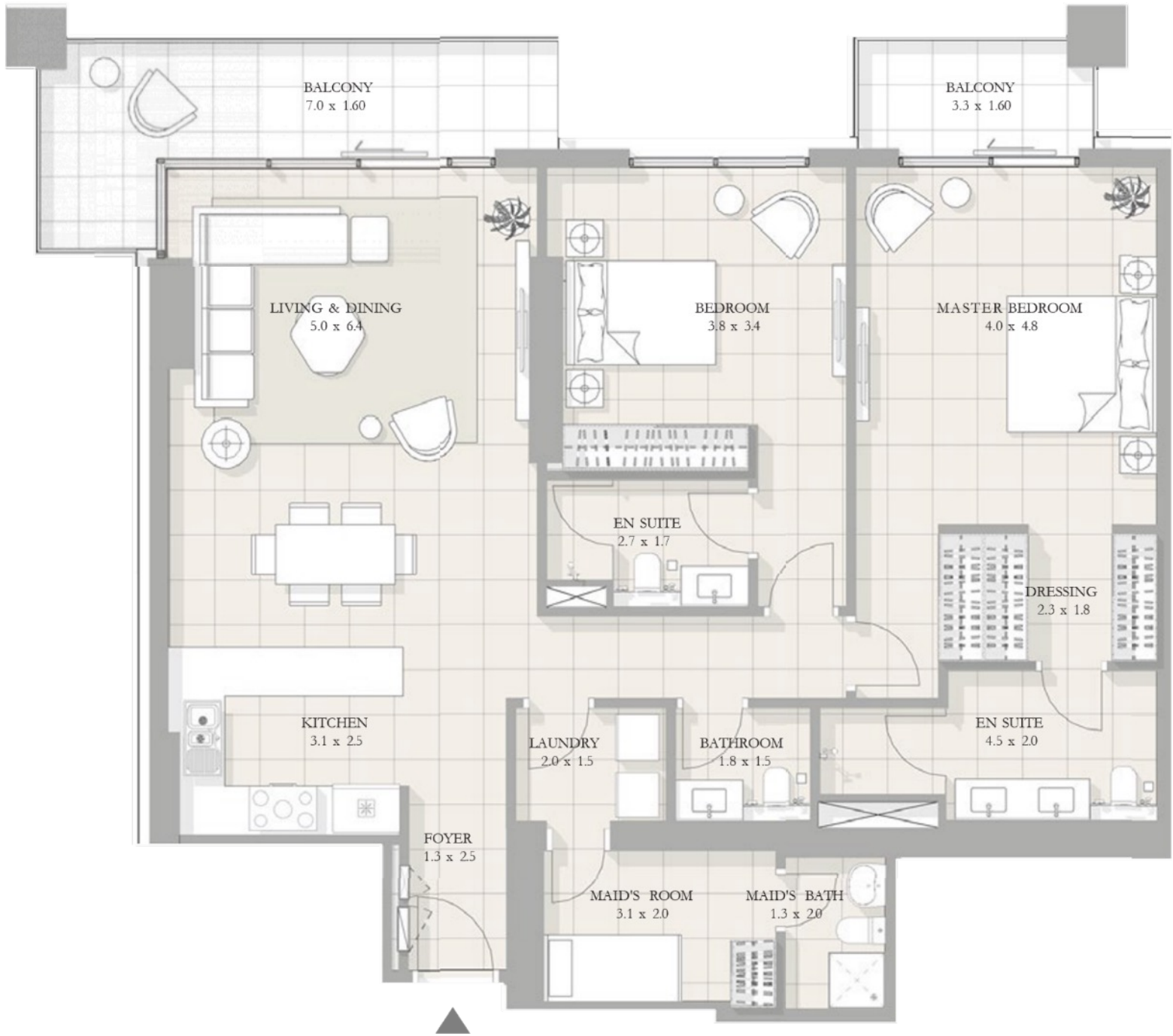


BLUEWATERS *bay*



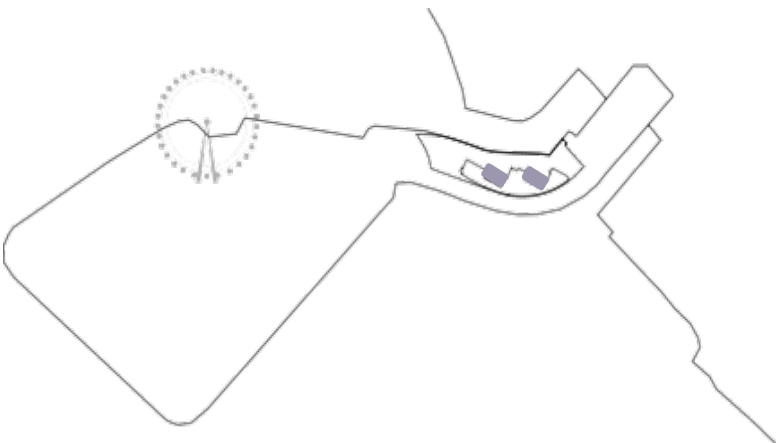
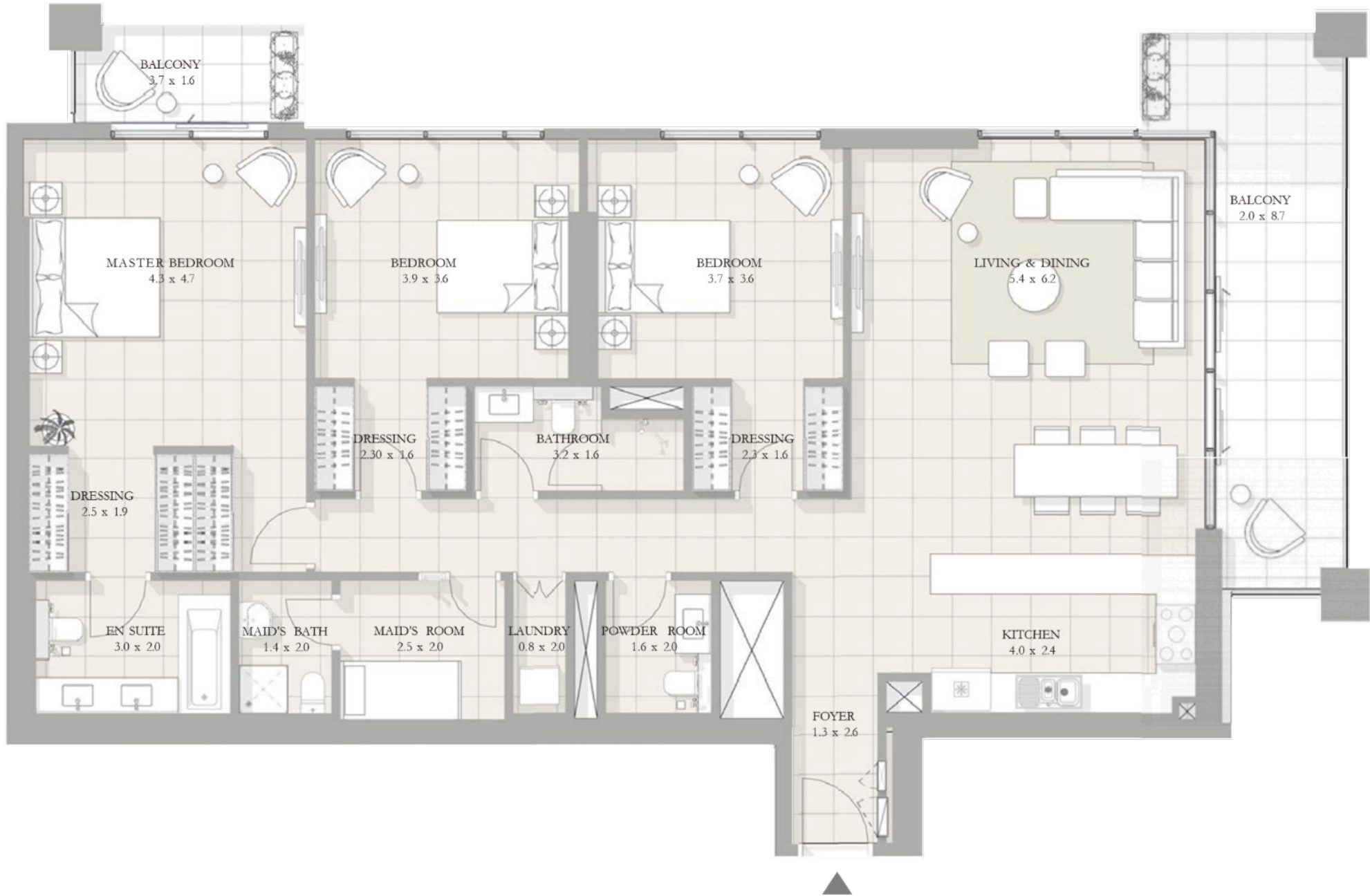
2-BEDROOM

BLUEWATERS *bay*

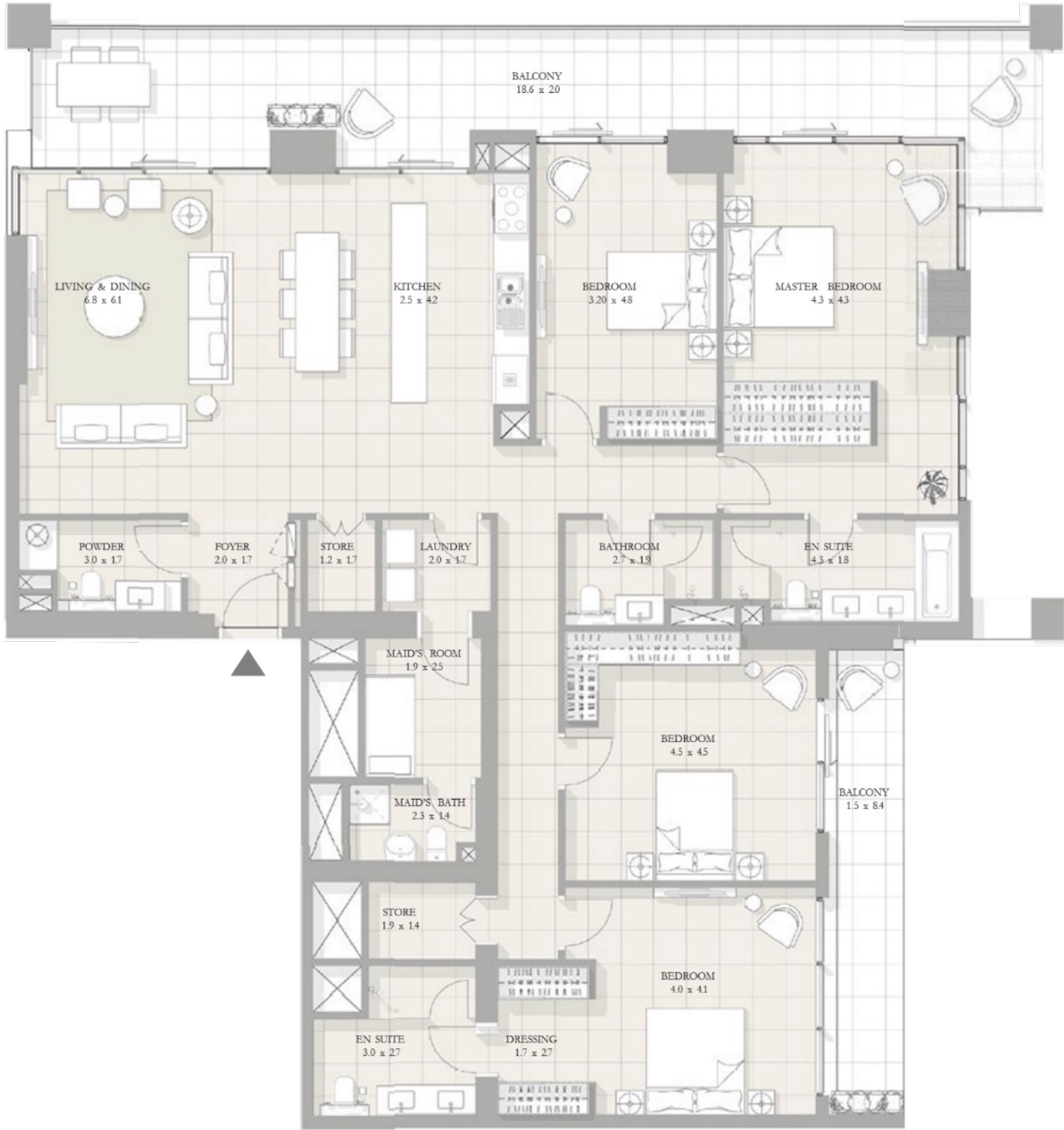


2-BEDROOM+MAID

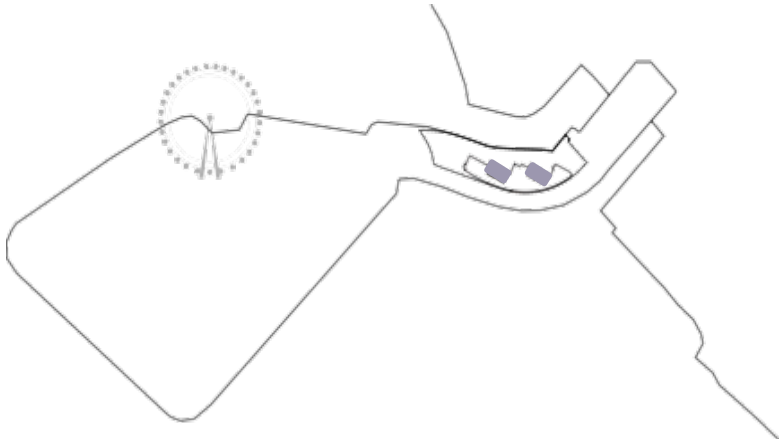
BLUEWATERS *bay*



3-BEDROOM



BLUEWATERS *bay*



4-BEDROOM

BUILDING CHARACTERISTICS



- 2 BUILDINGS
- 672 RESIDENTIAL UNITS
- 1, 2, 3 and 4-BEDROOM UNITS
- 3 PENTHOUSE UNITS
- 1 RETAIL UNIT
- RESORT-STYLE POOL
- KID’S POOL
- FITNESS CENTRE
- LUSH GREEN SPACES & BBQ AREAS
- TENNIS COURT

NO OF BEDROOMS	MINIMUM TOTAL AREA	MAXIMUM TOTAL AREA
1 Bedroom	800 Sq.ft	925 Sq.ft
2 Bedroom	1,225 Sq.ft	1,650 Sq.ft
3 Bedroom	2,000 Sq.ft	2,050 Sq.ft
4 Bedroom	2,850 Sq.ft	3,050 Sq.ft

BLUEWATERS *bay*

PRICES

PRICES



1 BEDROOM

STARTING FROM AED 2.56M

2 BEDROOM

STARTING FROM AED 3.35M

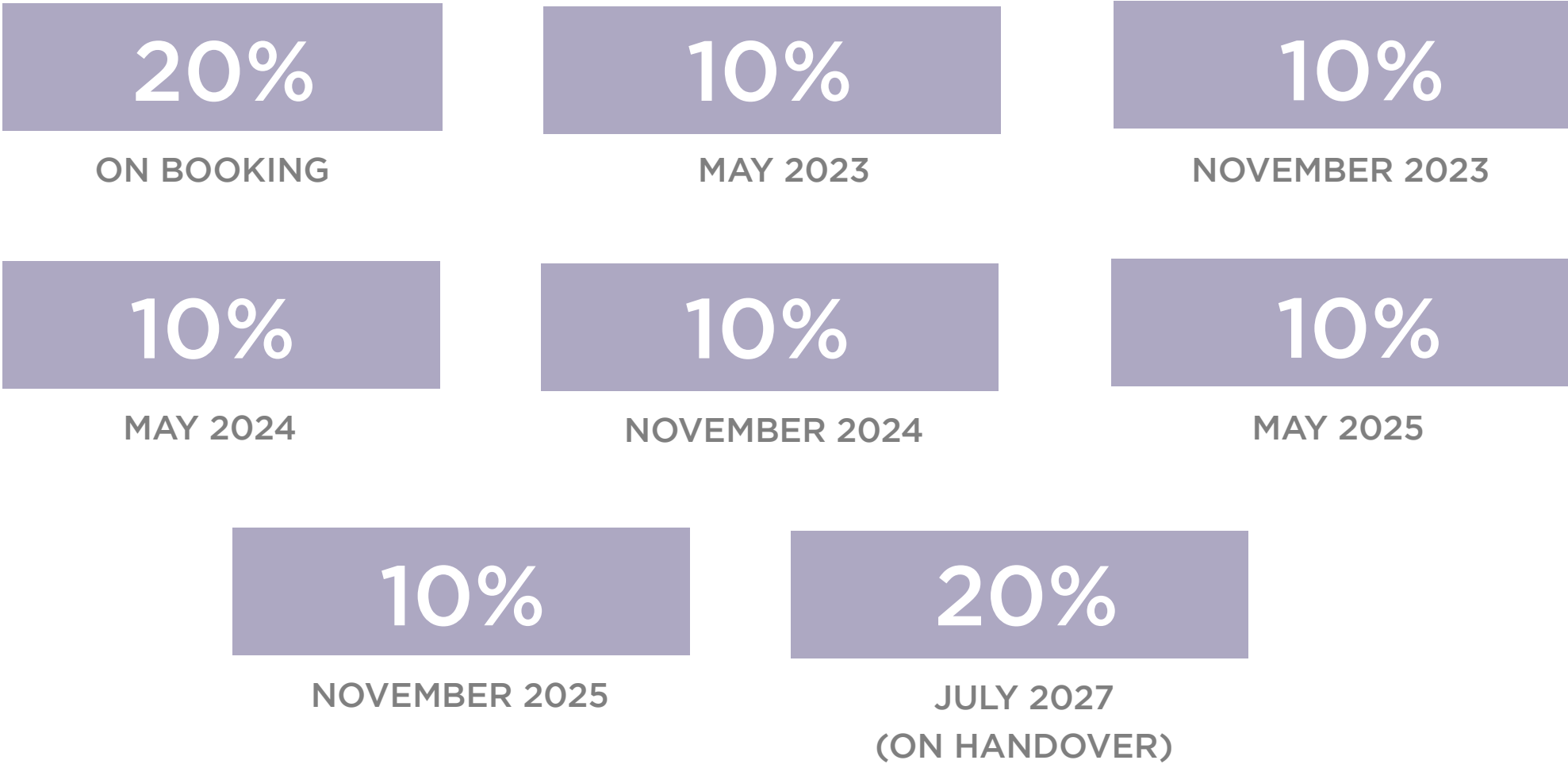
3 BEDROOM

STARTING FROM AED 6.35M

BLUEWATERS *bay*

PAYMENT PLAN

PAYMENT PLAN



BLUEWATERS *bay*

ONLINE REGISTRATION
PROCESS

ONLINE REGISTRATION PROCESS



After 2 to 3 days, you will receive a notification to register your clients with a few dos and don'ts to keep in mind.

Do's

- Only use the link provided in the registration notification.
- Only register clients with genuine interest.
- Fill out your client's details where it states 'customer' and your personal details where it states 'broker'.
- To avoid delays at the booking stage, please ensure that your client's email address and mobile number are correct, and their name is exactly as it appears on their passport.
- Select the correct agency name.

ONLINE REGISTRATION PROCESS



Don'ts

- Do not register your client before receiving the official registration notification. Registrations received before the official notification will be excluded.
- Do not fill in your email ID in the client's email ID field.
- Do not fill in your mobile number in the client's mobile number field.
- Do not register the same client more than once.
- Do not register inaccurate client names.
- Do not forge, alter or duplicate tokens. This will significantly reduce your chances of obtaining a unit and increase the possibility of being excluded from future launches.

BLUEWATERS *bay*

SALES LAUNCH
EVENT

SALES LAUNCH EVENT



VENUE

Coca-Cola Arena, Dubai

DATE

Wednesday, 7th December 2022

TIME

9:00am Onwards

BLUEWATERS *bay*



bluwatersbaydubai.com