



LIFE! ORANGE



Orange.Life! is a part of large international holding Orange Group

- Construction
- Hotels and restaurants
- Investment and retail properties

We act as investment center in Dubai and suggest out clients to invest in our own chain of hotels



Company highlights

Global

3

countries

>1000

units

>250 000 m²

in our managment

250 000 000 USD

investment portfolio



Russia

7 projects

20% investors come to us again
ROI on projects > 10%
More than 500 investors

UAE

2 projects

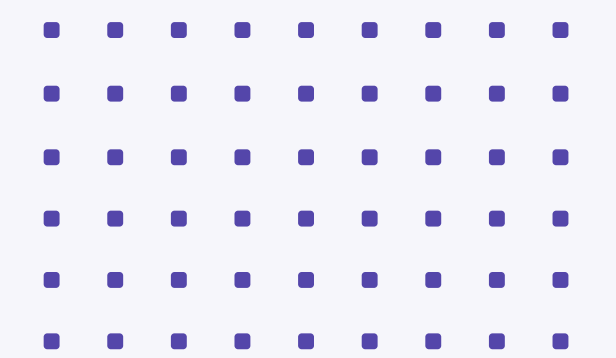
[izzzi.life Mint](#)
[izzzi.life Lime](#)

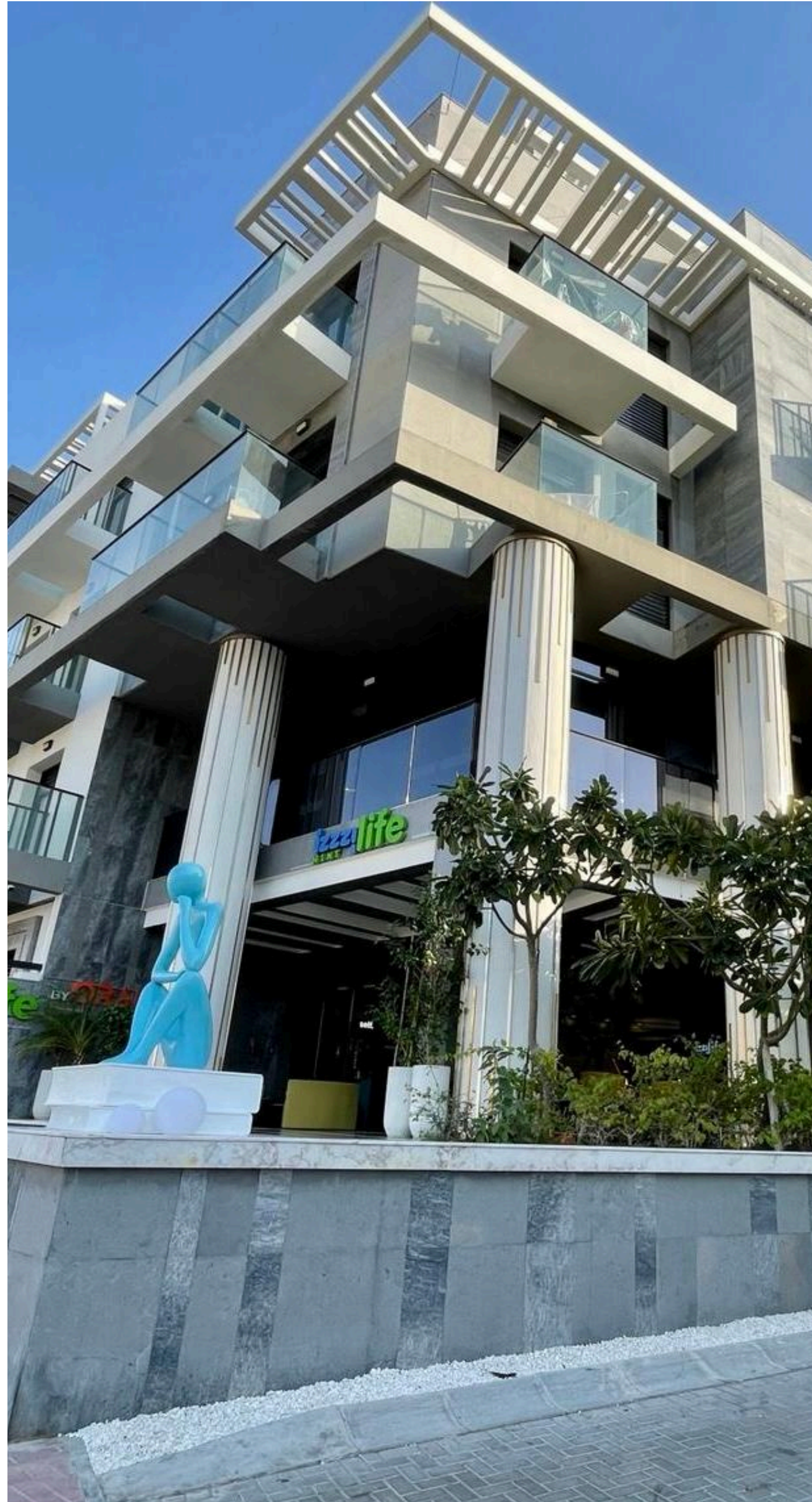
Investment portfolio: 63.5 mln USD
3 payment methods
8% ROI guaranteed

Germany

Investment center in EU

Profitable real estate projects
Orange.Life!





Orange.Life!

Products for investors are colivings and serviced apartments short-term rent

Easy-living is a product filled with the philosophy of lightness from izzzi:

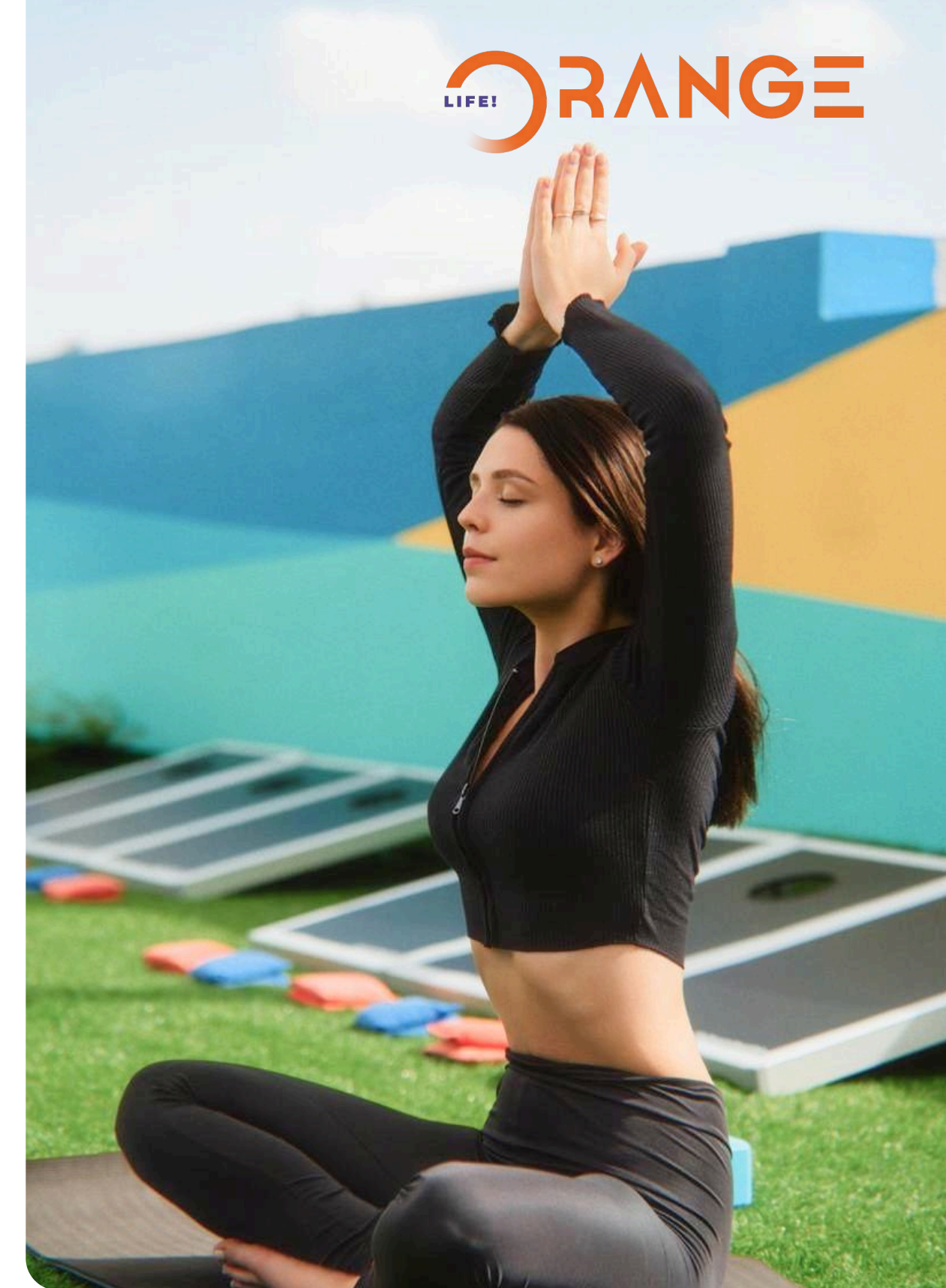
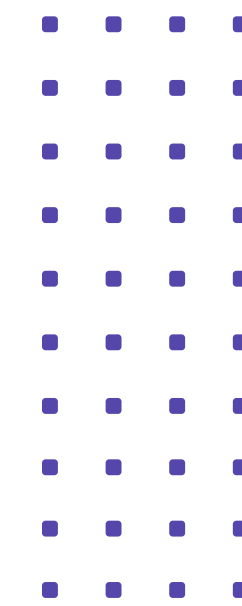


- Advantage is given to large public spaces, with full hotel services
- Community of like-minded people
- Management of the professional international property management company izzzi



What is Co-living?

Is a community living concept whereby tenants move in with like-minded people under special living space with diversity of collective services



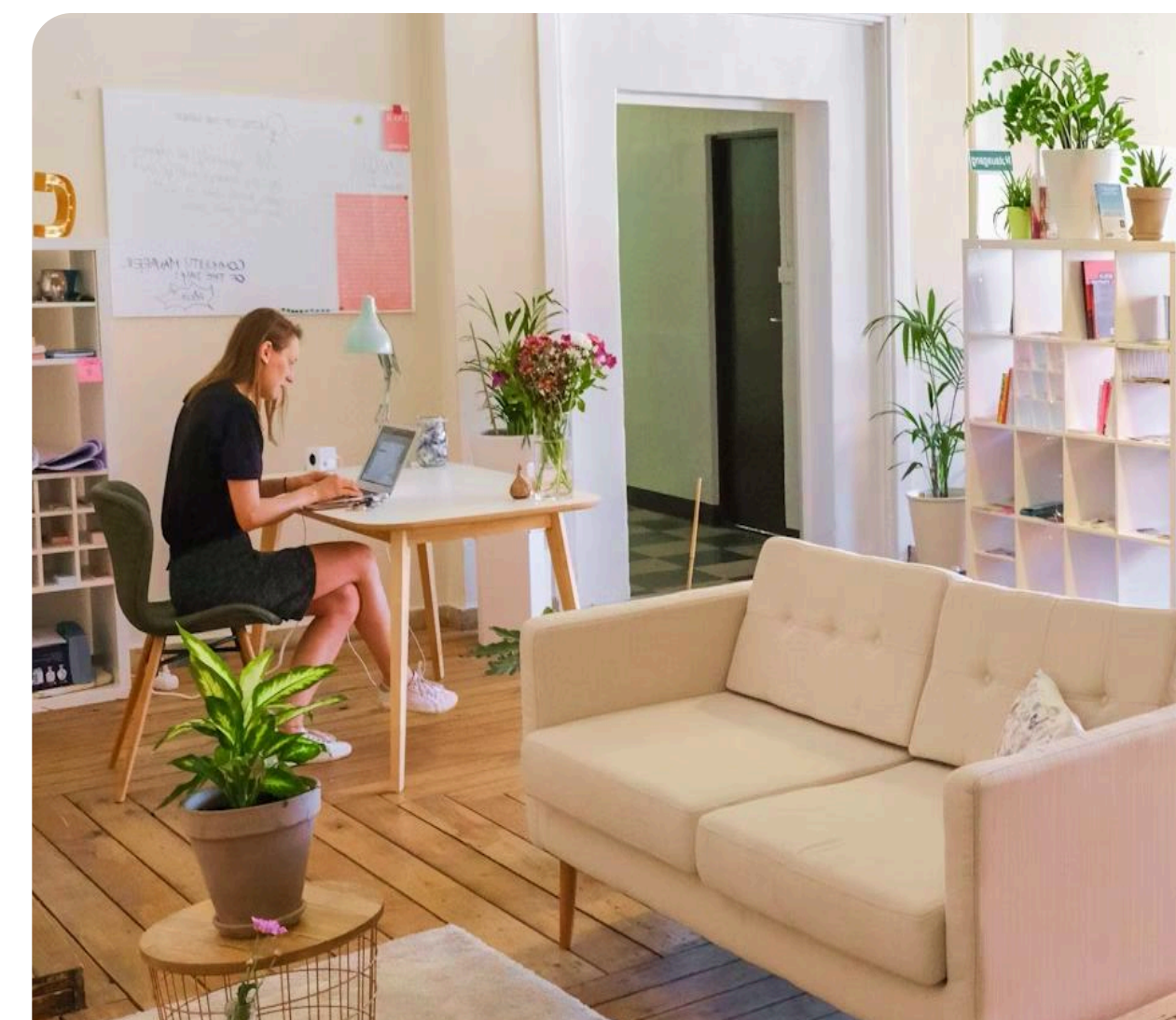
LIFE! ORANGE



A space where you can live, work, socialize, and create

A complex with a lot of events and a community (coworking, coliving)

Nothing extra: smaller units contain everything necessary for living, while the room has all the amenities of a hotel



izzzi.life Mint

**Apartments
for investment
in Dubai**

Guaranteed income 8%

 **Dubai | Jumeirah Village Circle**



115 apartments

Perfectly designed for individuals,
couples and families with children

Studio
30 units

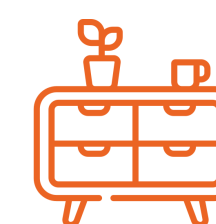
1 Bedroom
81 units

2 Bedroom
4 units

G+4

**Building with fully
furnished apartments**

with full range of technics, WI-FI, contains
kitchen zone and balcony or terrace



Fully furnished



Good location

Location

Jumeirah Village Circle



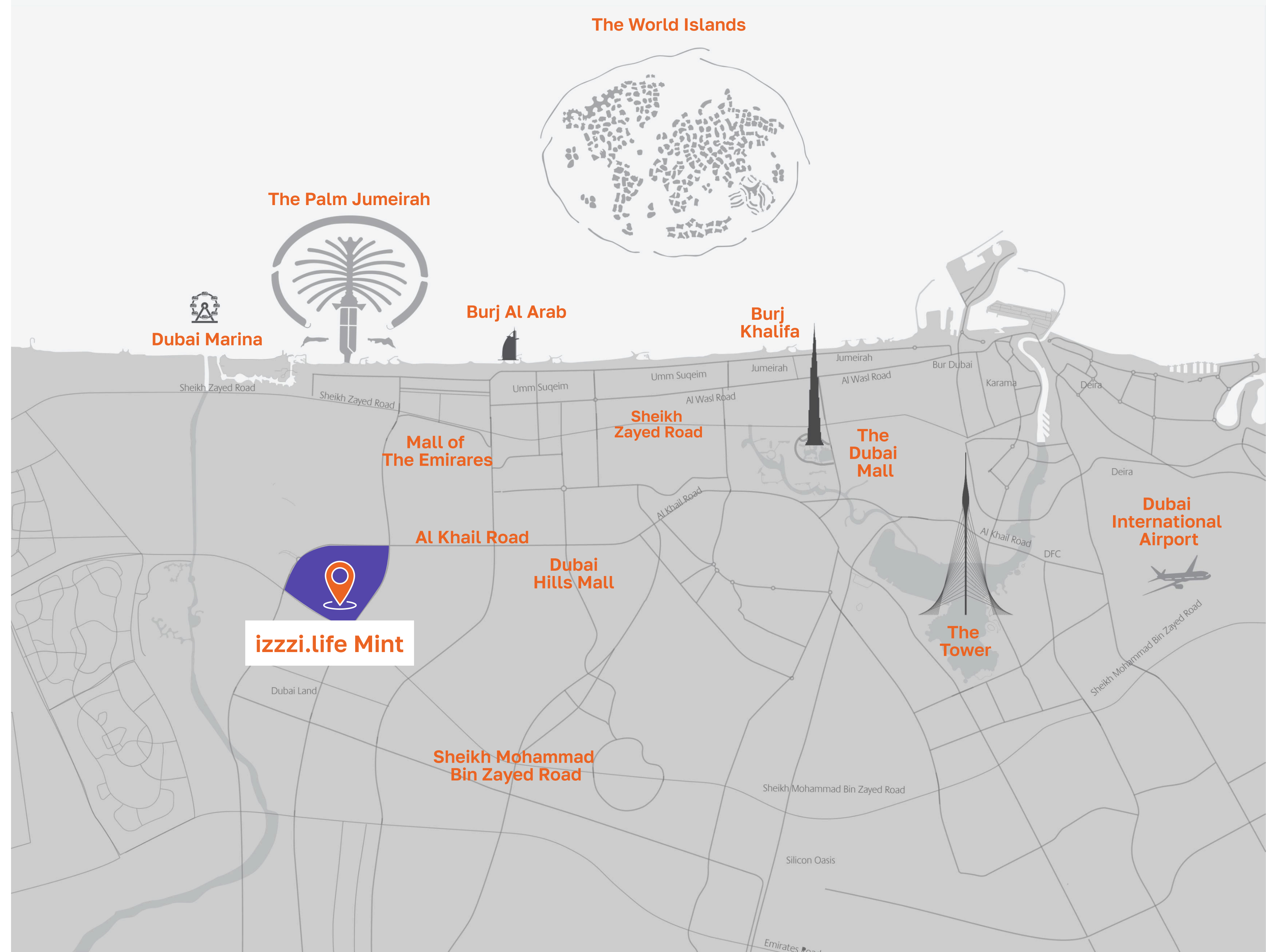
7 minutes
to Dubai Hills Mall

10 minutes
to Palm Jumeirah

10 minutes
to Dubai Marina

15 minutes
to Burj Al Arab

20 minutes
to Burj Khalifa and Dubai Mall



izzzi.life Mint

Amenities

24/7 reception

Our administrators work around the clock and are always happy to welcome guests

Pool, kids pool

Outdoor full-size swimming pool with a dedicated area for children



Coworking and activities areas

Dedicated equipped areas for remote work and outdoor activities



Roof top cinema

An open-air cinema on the territory of the complex for a relaxing holiday with a company or family



izzzi.life Mint

Amenities



Roof top
with BBQ area



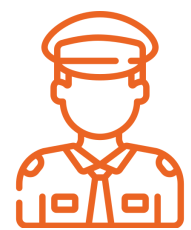
Golf



Lobby lounge



Parking



Security
and lifeguard



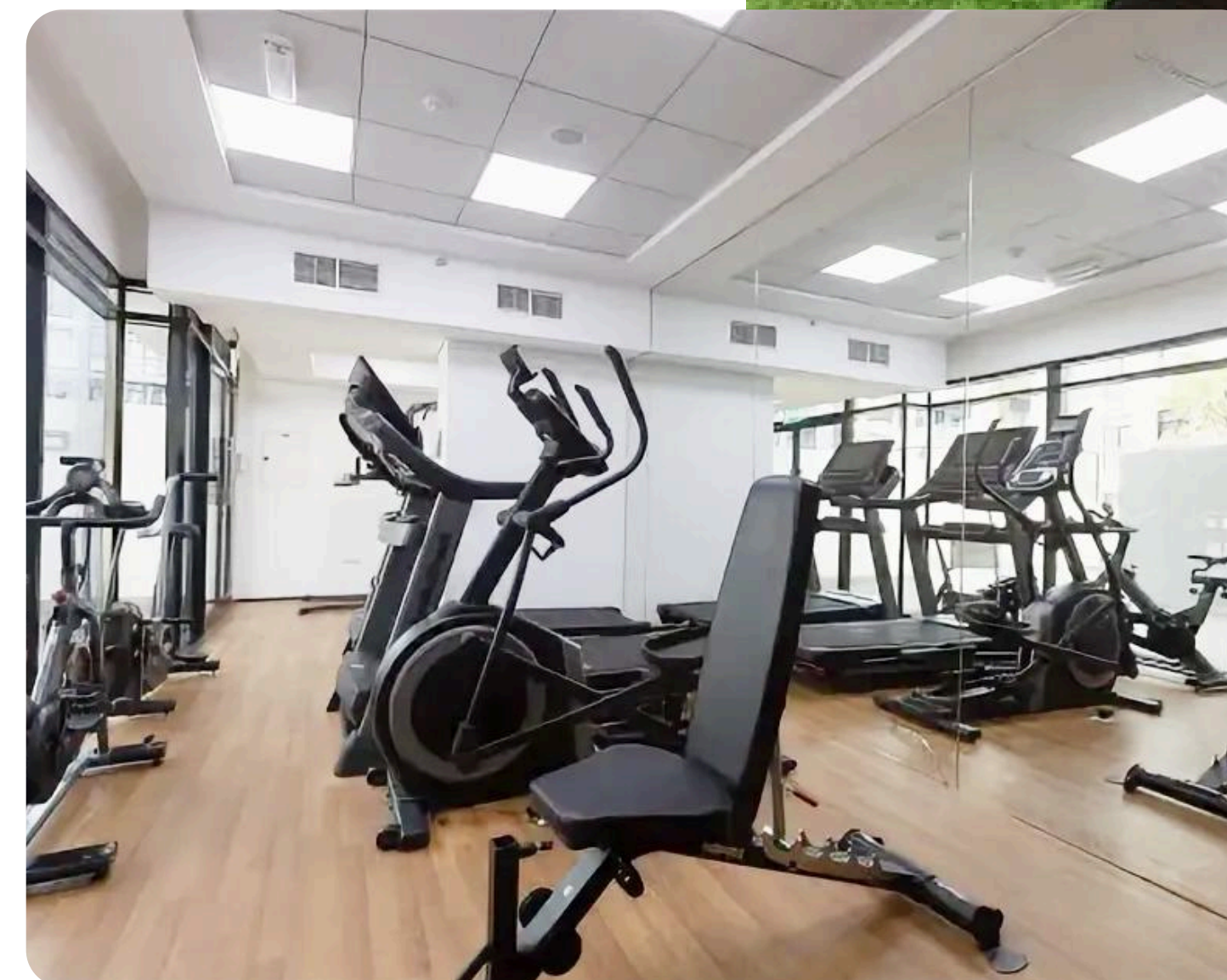
Concierge services



Outdoor
workout + Gym



Yoga zone

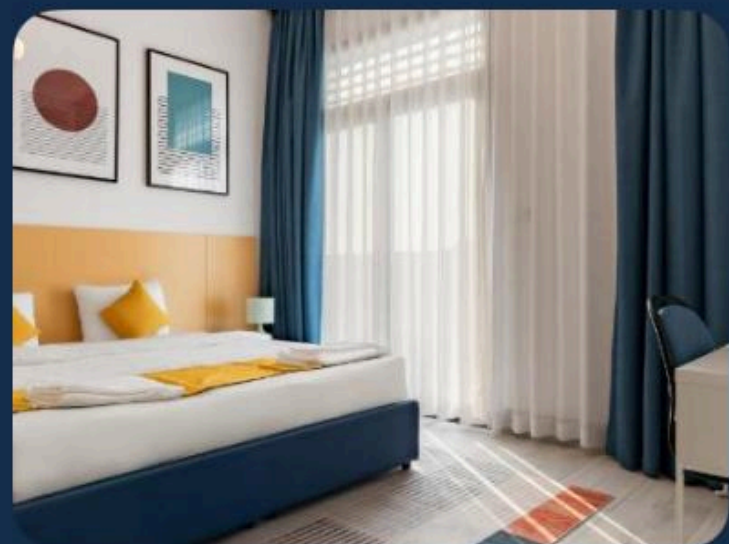




Our coliving space, izzzi.life Mint in JVC Dubai has earned the **Traveler Review Award 2024**



The complex boasts a fabulous rating on booking and an incredible occupancy rate more than 95%



Izzzi Life Mint



8.8 Fabulous · 291 reviews

Sold out!



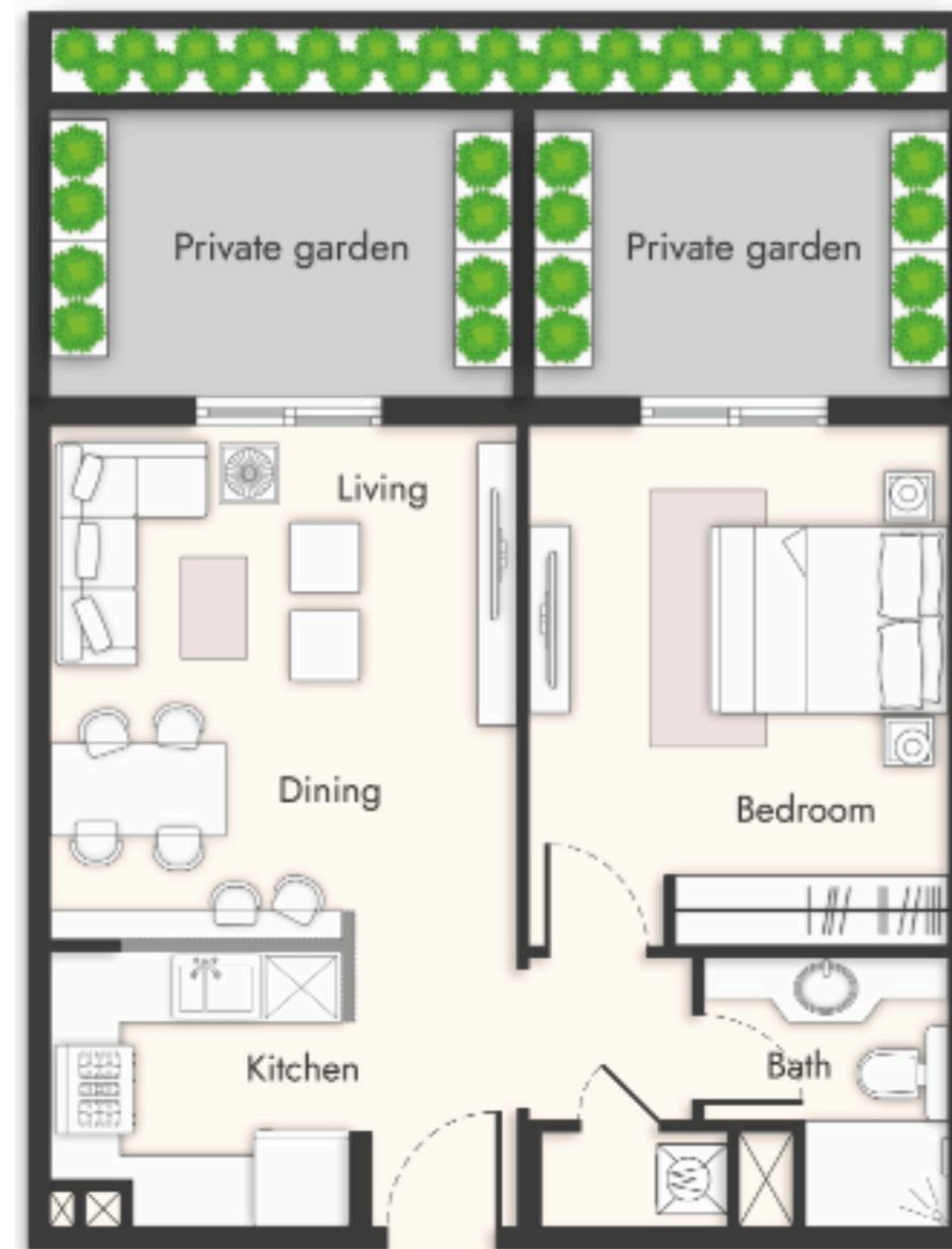
***FULLY BOOKED**



LAYOUTS



STUDIO



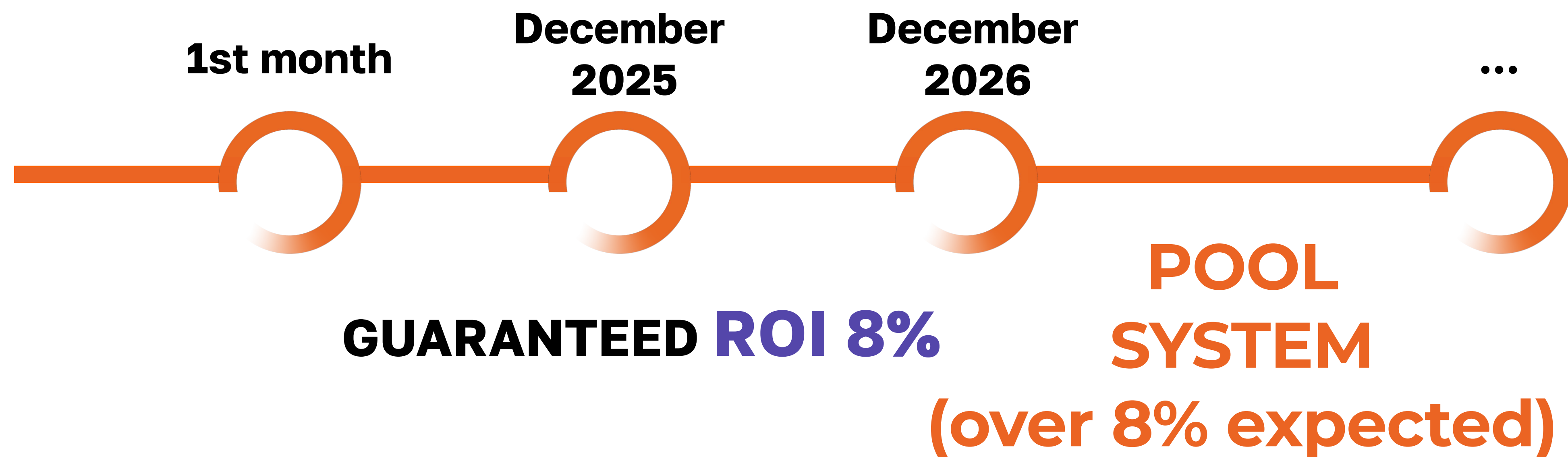
1BEDROOM



2BEDROOM



INCOME DISTRIBUTION SYSTEM



POOL SYSTEM

Income distribution system



Each unit has its **own coefficient** depending on size



Revenue is **distributed** in proportion to the coefficient



20% - for management company
80% - for investors depending on the coefficient



New format accommodation for digital nomads

Live, work, have fun, and exercise
without leaving the complex

📍 Dubai | Jumeirah Gardens (Al Satwa)



izzzi.life Lime

Studio

138

350 - 400 sqf

1 Bedroom

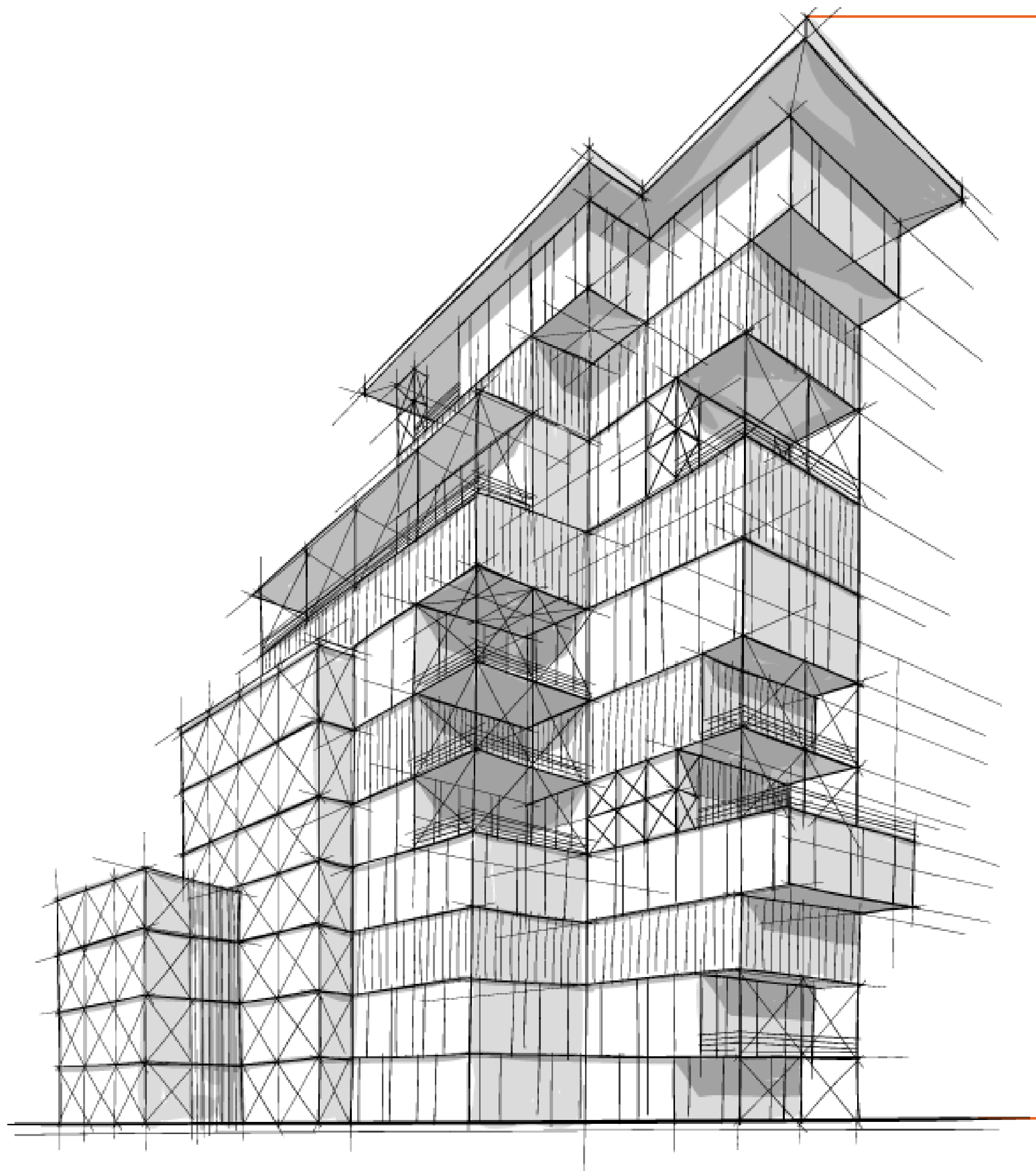
24

650 - 800 sqf

2 Bedroom

6

1250 - 1450 sqf



Number
of floors

B+G+2P+6

Project
implementation
period

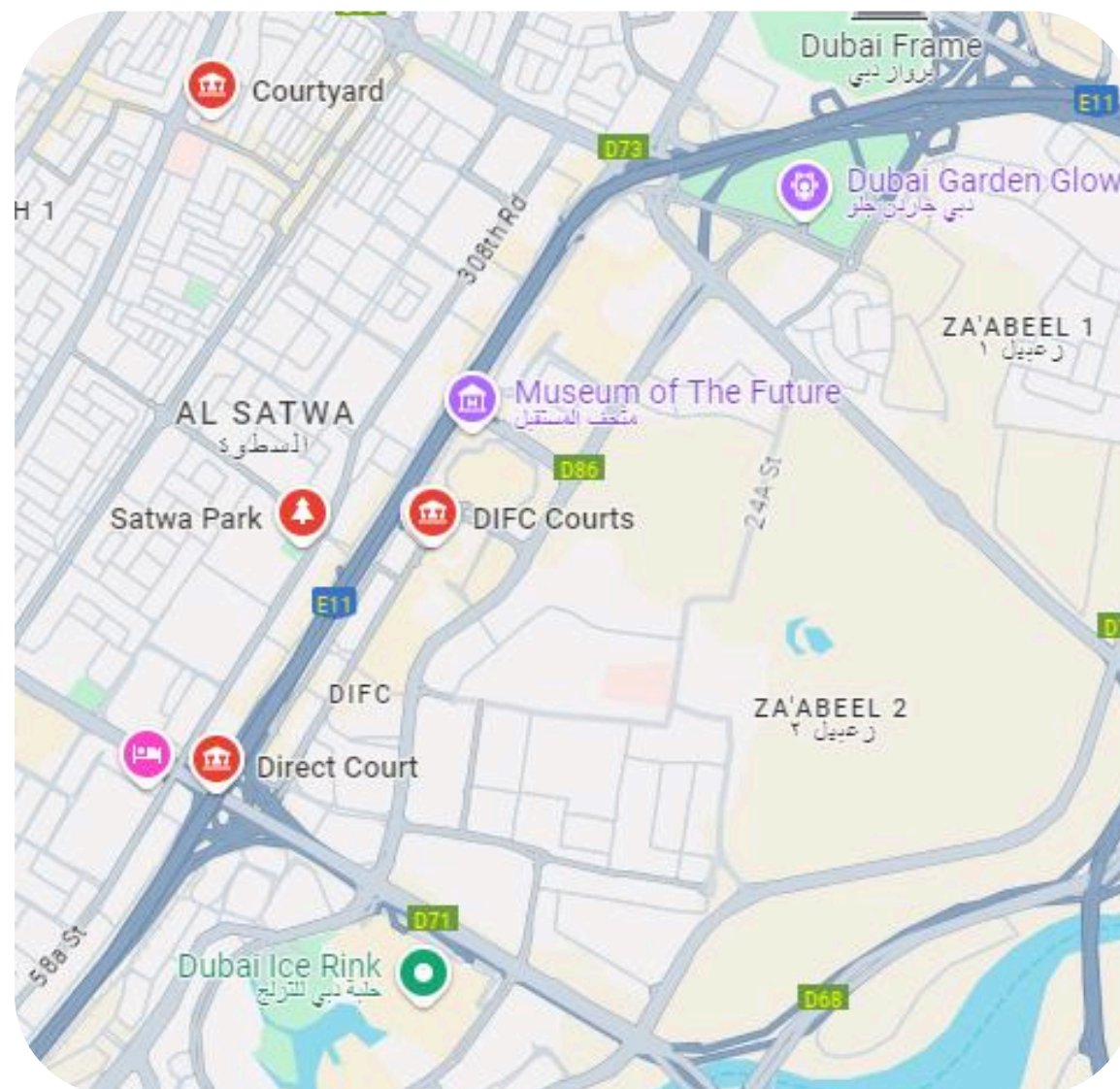
3 years

Handover

2027

izzzi.life Lime

Jumeirah Gardens (Al Satwa) is a new project by the master developer Meeras, located in the heart of Dubai, surrounded by Jumeirah, City Walk, Downtown, and DIFC districts



 Al Satwa district

Nearby locations

5 minutes to Trade Centre metro station

10 minutes to Museum of the Future

10 minutes to Al Satwa Park

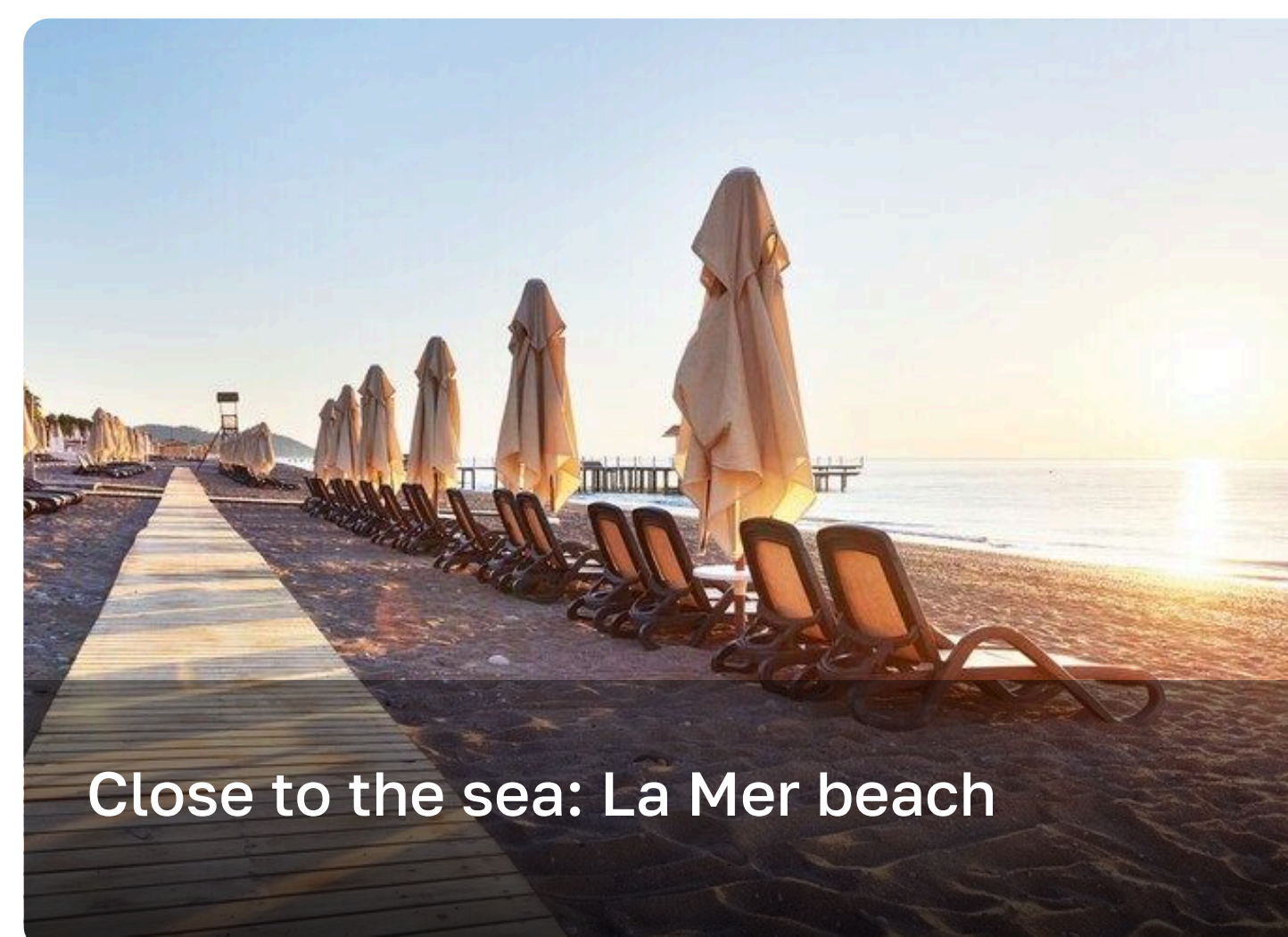
15 minutes to La Mer beach





izzz!life
LIME

Advantages of the district





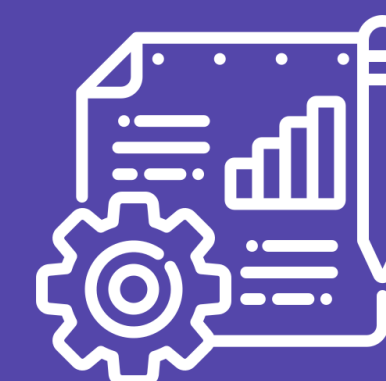
Complete
renovation according
to the **Orange.Life!** strategy



Ready properties -
immediate returns



8% guaranteed
income per annum



Property management
company izzzi

