



THE NEW BALANCE OF LIFE AND LEISURE

Home is where comfort and joy greet every moment. In Dubai, daily life seamlessly blends with tranquil escapes, offering serene beaches and vibrant city streets. With world-class infrastructure, a rich cultural tapestry, and luxurious amenities, Dubai is the ideal place to start your next chapter.

Lodge Residences is located in the vibrant community of Jumeirah Village Circle (JVC), perfect for family-friendly living as it combines city energy with the charm of a modern village. It offers sports fields, schools, community spaces, mosques, and lush green parks—all designed for every family member to thrive.

JUMEIRAH VILLAGE CIRCLE

LANDMARKS

MALL OF EMIRATES
16 min

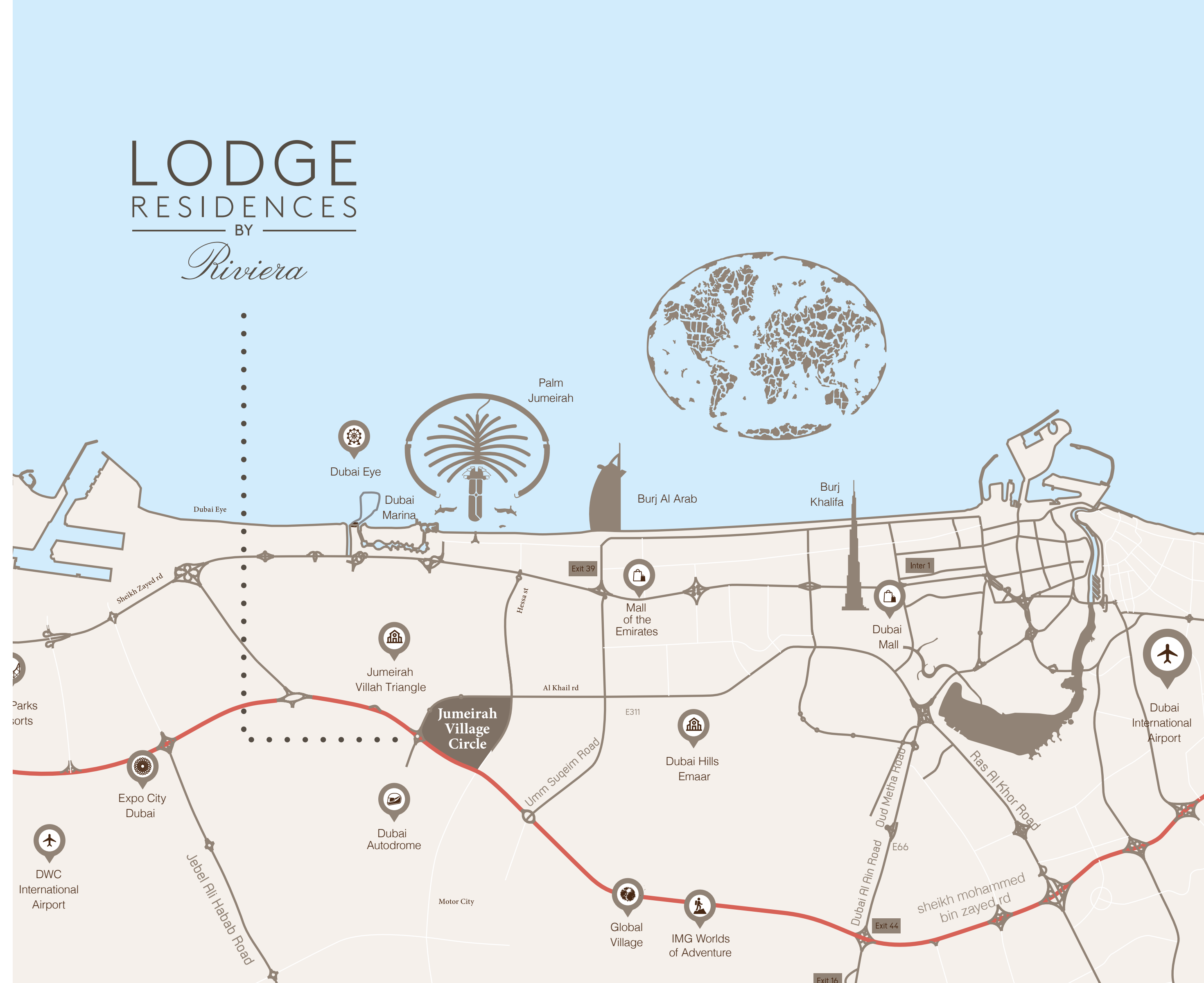
BLUE WATERS ISLAND & DUBAI EYE
18 min

PALM JUMEIRAH
16 min

BURJ KHALIFA & DUBAI MALL
21 min

DUBAI INTERNATIONAL AIRPORT
27 min

DWC INTERNATIONAL AIRPORT
31 min





TRANQUILITY
MEETS
MODERNITY

Lodge Residences, a serene retreat where modern comforts meet rustic chic design. Nestled amidst Dubai's vibrant energy, this tranquil sanctuary beckons you to call it home.





THE LOBBY

MORE TO EVERYDAY LIVING

Step into the rustic charm of Lodge Residences, where modern comforts greet guests at every corner. The lobby, inspired by the essence of 'Lodge,' offers a balanced aesthetic, blending fresh style with spacious interiors and a warmly lit lobby.



The background of the image features a series of horizontal, wavy lines in a light beige or taupe color, set against a slightly darker beige background. The lines flow from left to right, creating a sense of movement and depth. The text is positioned on the right side of the image, centered vertically.

**SPEND
TIME ON
YOURSELF**



PLUNGE INTO COMFORT

At Lodge Residences, holistic living means no compromises. Beyond your cozy apartment, enjoy a fully equipped gym, adult and children's pools, and spacious common areas—a place to truly call your own.



THE POOL





YOUR
EVERYDAY
ESCAPE



YOUR APARTMENT

Living spaces designed for comfort

The 1-bedroom apartments feature two full bathrooms and an additional study room, offering the perfect place to unwind. For those needing more space, the spacious 2-bedroom apartments include three full bathrooms and a study room, providing ample space to enjoy every moment.



ESCAPE INTO YOUR IMAGINATION



Each apartment in Lodge Residences includes a flexible room designed to inspire creativity. Customize it to fit your needs – whether it's a study, a child's play area, a meditation room, or an AV room. The options are limitless for personalizing your space and crafting your own distinctive style.



THE STUDY



STUDY, AS PLAY ROOM

A SPACE
CALLED YOURS



YOUR CULINARY PLAYGROUND



The kitchen features built-in appliances, premium polished surfaces, and a dedicated beverage cooler. Every detail is thoughtfully placed within easy reach, designed to match your aesthetic preferences.



THE KITCHEN

BUILT-IN APPLIANCES

Disclaimer:
(1) All materials, dimensions and drawings are approximate and for illustration purposes.
(2) Information is subject to change without notice.



BUILT-IN FRIDGE AND FREEZER



BUILT-IN OVEN / STOVE



BUILT-IN DISHWASHER



BUILT-IN BEVERAGE COOLER



BUILT-IN WASHING MACHINE



ALWAYS A LITTLE MORE

Every 1-bedroom apartment comes with two full bathrooms, including a lavish en suite and an additional full bathroom for extra convenience. The 2-bedroom apartments feature three full bathrooms, ensuring that everyone in the household enjoys their own private space.



EN SUITE BATHROOM
WITH WALK-IN CLOSET



SMART HOME LIVING

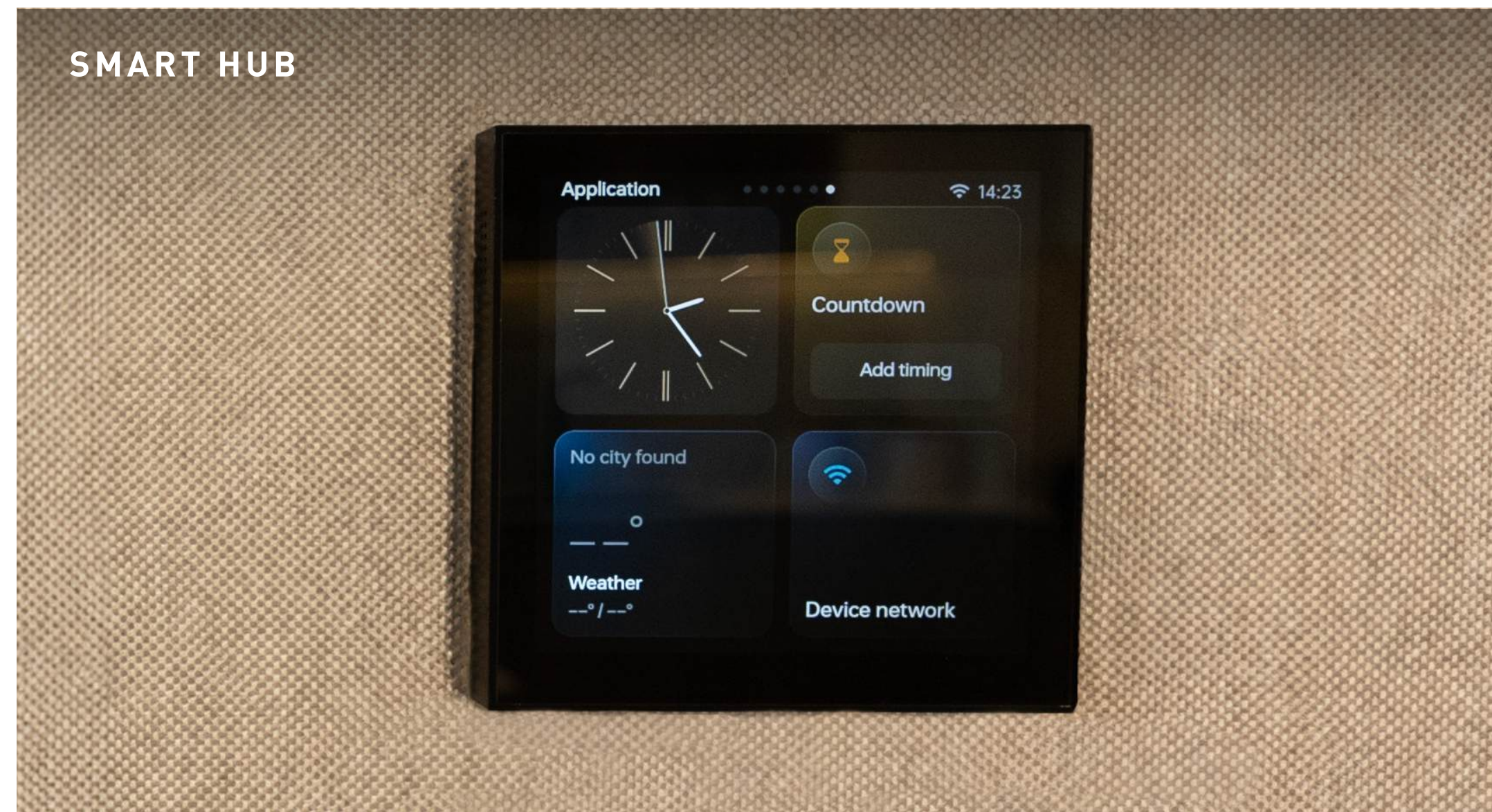


HOME AUTOMATION

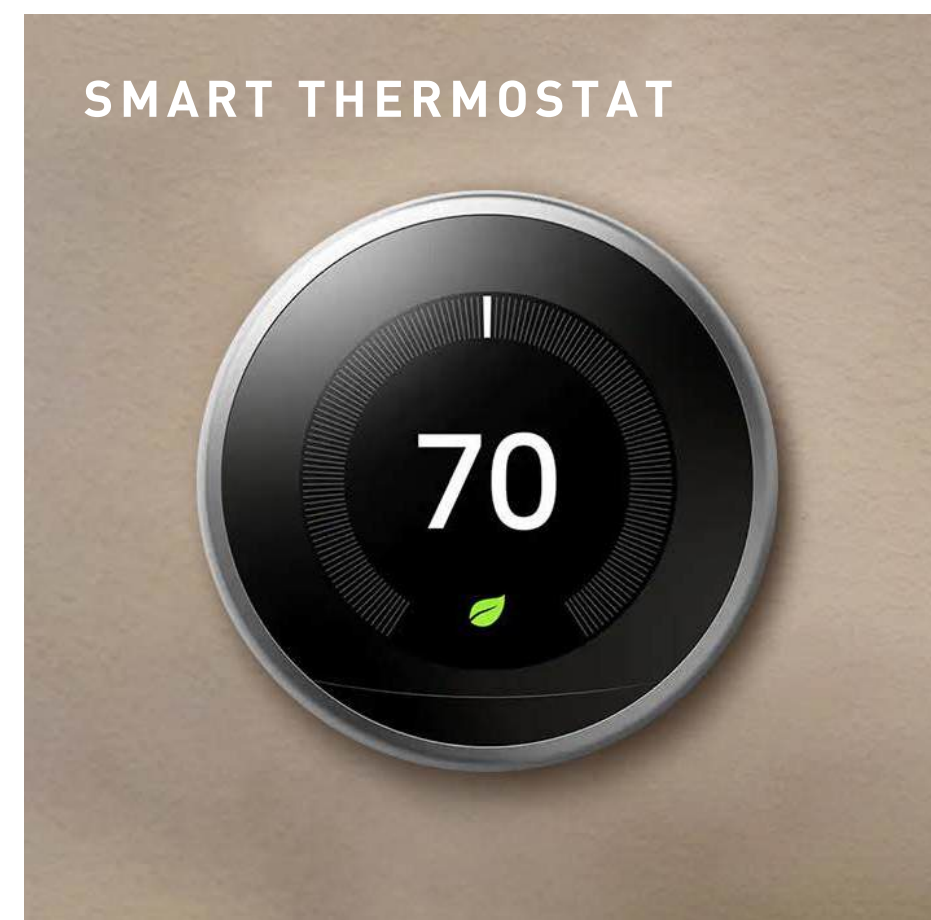
Lodge Residences blends nature and technology. With a smart hub and thermostat, residents can easily control their home's environment. Stylish smart switches offer both beauty and functionality. Each apartment has a smart lock system, providing comfort and security for all belongings.



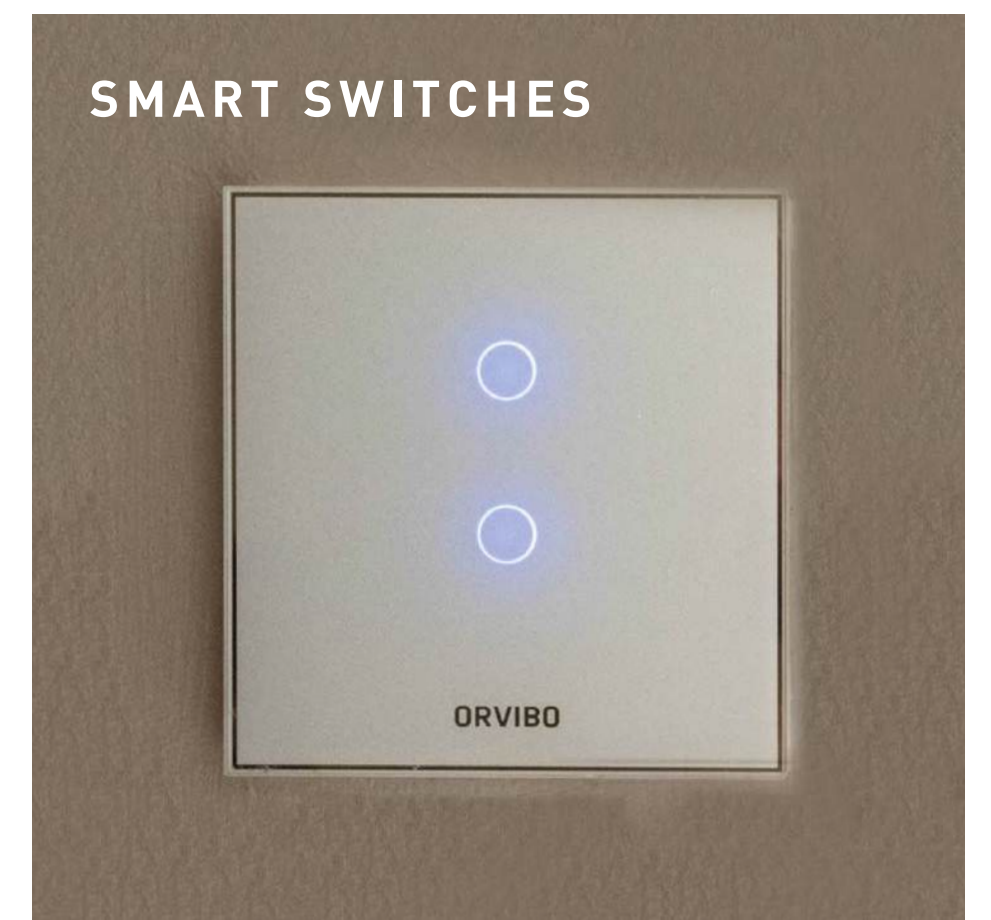
SMART LOCK



SMART THERMOSTAT



SMART SWITCHES



FLOOR PLANS

1ST FLOOR PLAN

No.	Type	Suite	Balcony	Total
01	1A	865	168	1,033
02	1A	866	68	934
03	1A	862	154	1,016
04	1A	866	69	935
05	1A	864	68	932
06	2B	1,371	91	1,462
07	2A	1,391	91	1,482
08	1A	863	84	947
09	1A	871	84	955
10	1B	926	67	993

Disclaimer:
(1) All materials, dimensions and drawings are approximate and for illustration purposes. (2) Information is subject to change without notice.
(3) Actual suite area may vary from the stated area. (4) Suite & the balcony area may vary from floor to floor. (5) Drawings not to scale.
(6) The developer reserves the right to make revisions/alterations without any liability whatsoever.
(7) Apartments are sold as unfurnished apartments, without furniture, furnishings, etc.



TYPICAL FLOOR PLAN

(2ND- 4TH FLOORS)

No.	Type	Suite	Balcony	Total
01	1A	867	75	942
02	1A	866	68	934
03	1A	864	74	938
04	1A	866	68	934
05	1A	864	68	932
06	2B	1,371	91	1,462
07	2A	1,391	91	1,482
08	1B	918	83	1,001
09	1A	863	84	947
10	1B	926	83	1,009
11	1A	871	84	955
12	1B	926	67	993

Disclaimer:

(1) All materials, dimensions and drawings are approximate and for illustration purposes. (2) Information is subject to change without notice. (3) Actual suite area may vary from the stated area. (4) Suite & the balcony area may vary from floor to floor. (5) Drawings not to scale. (6) The developer reserves the right to make revisions/alterations without any liability whatsoever. (7) Apartments are sold as unfurnished apartments, without furniture, furnishings, etc.

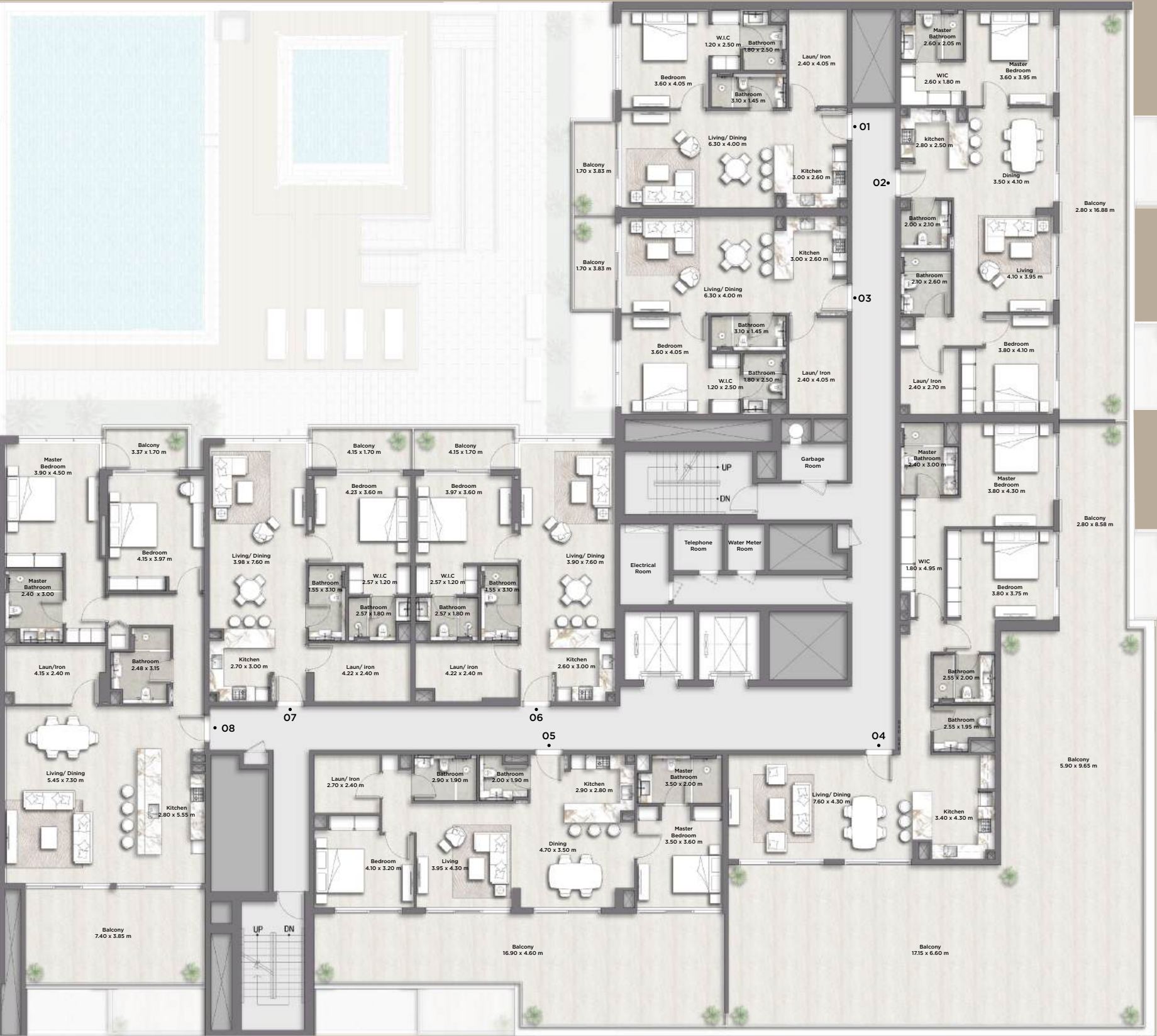


ROAD VIEW

5TH FLOOR PLAN

No.	Type	Suite	Balcony	Total
01	1A	866	75	941
02	2C	1,184	536	1,720
03	1A	864	74	938
04	2D	1,358	2,148	3,506
05	2E	1,176	701	1,877
06	1B	918	83	1,001
07	1B	926	83	1,009
08	2F	1,618	389	2,007

Disclaimer:
(1) All materials, dimensions and drawings are approximate and for illustration purposes. (2) Information is subject to change without notice.
(3) Actual suite area may vary from the stated area. (4) Suite & the balcony area may vary from floor to floor. (5) Drawings not to scale.
(6) The developer reserves the right to make revisions/alterations without any liability whatsoever.
(7) Apartments are sold as unfurnished apartments, without furniture, furnishings, etc.



STREET VIEW

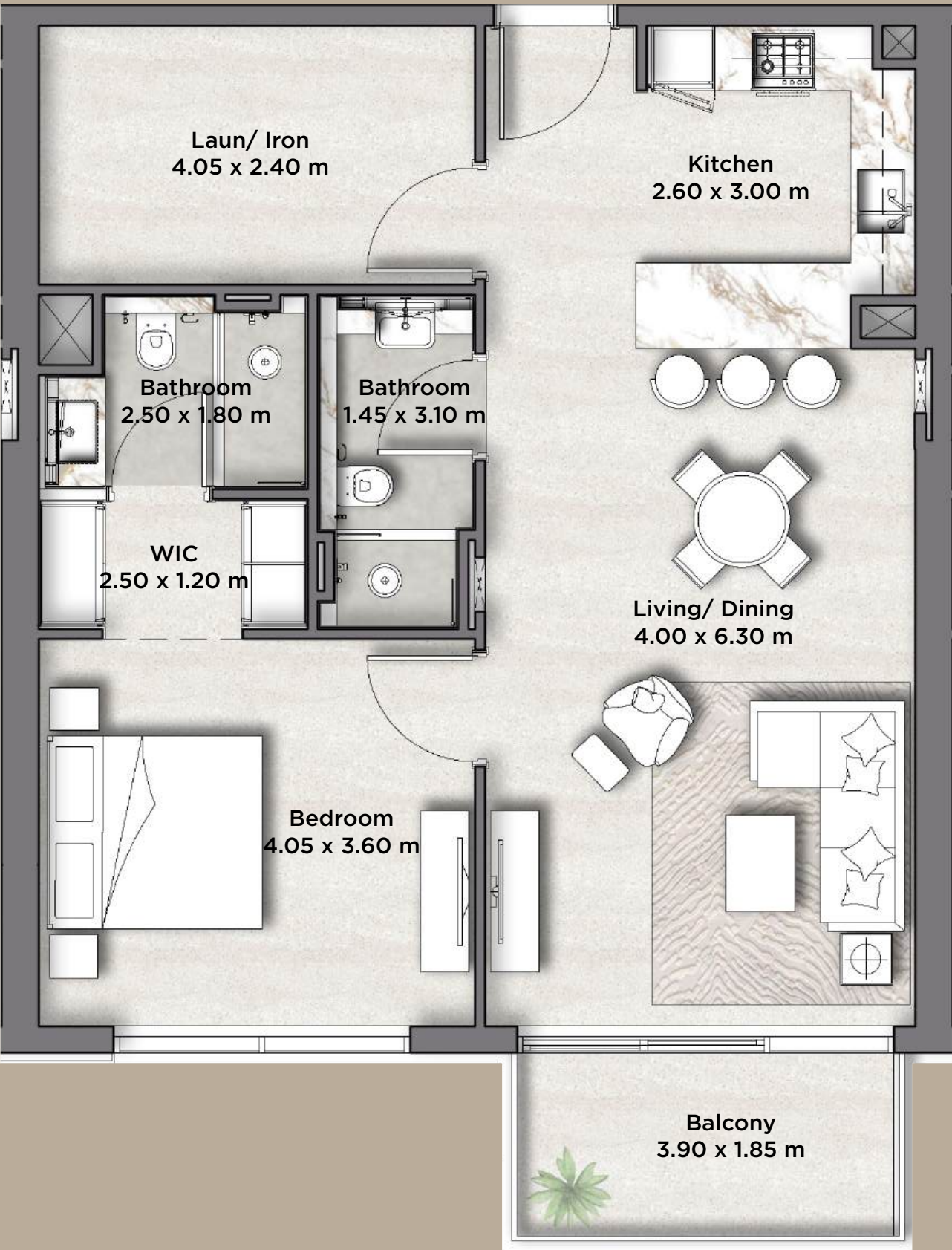
ROAD VIEW



UNIT PLANS

1 BED APARTMENTS TYPE A

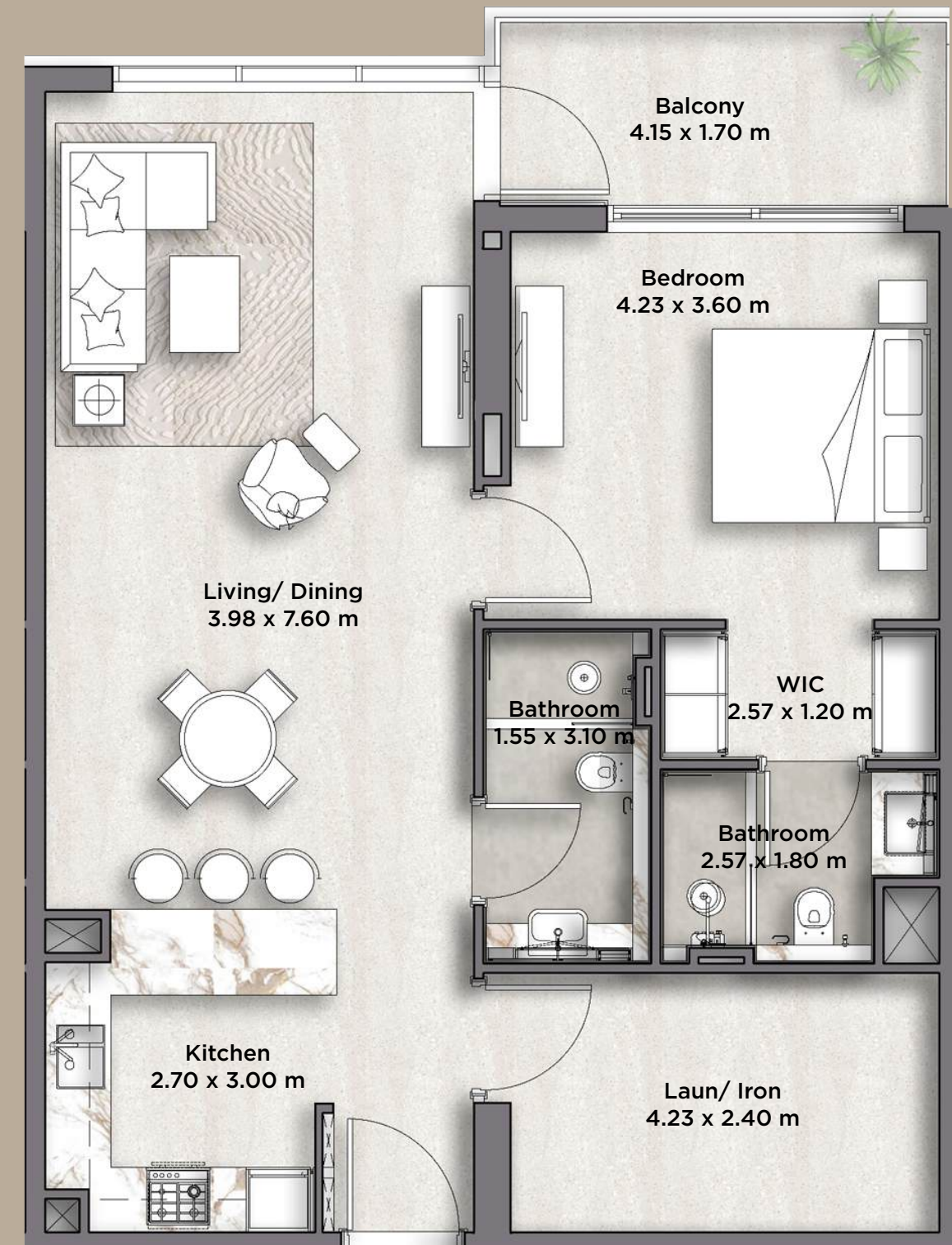
	Sq.Meter	Sq.Feet
Suite	80.17	863
Balcony	7.85	84
Total	88.02	947



Disclaimer:
 (1) All materials, dimensions and drawings are approximate and for illustration purposes. (2) Information is subject to change without notice. (3) Actual suite area may vary from the stated area.
 (4) Suite & the balcony area may vary from floor to floor. (5) Drawings not to scale. (6) The developer reserves the right to make revisions/alterations without any liability whatsoever.
 (7) Apartments are sold as unfurnished apartments, without furniture, furnishings, etc.

1 BED APARTMENTS TYPE B

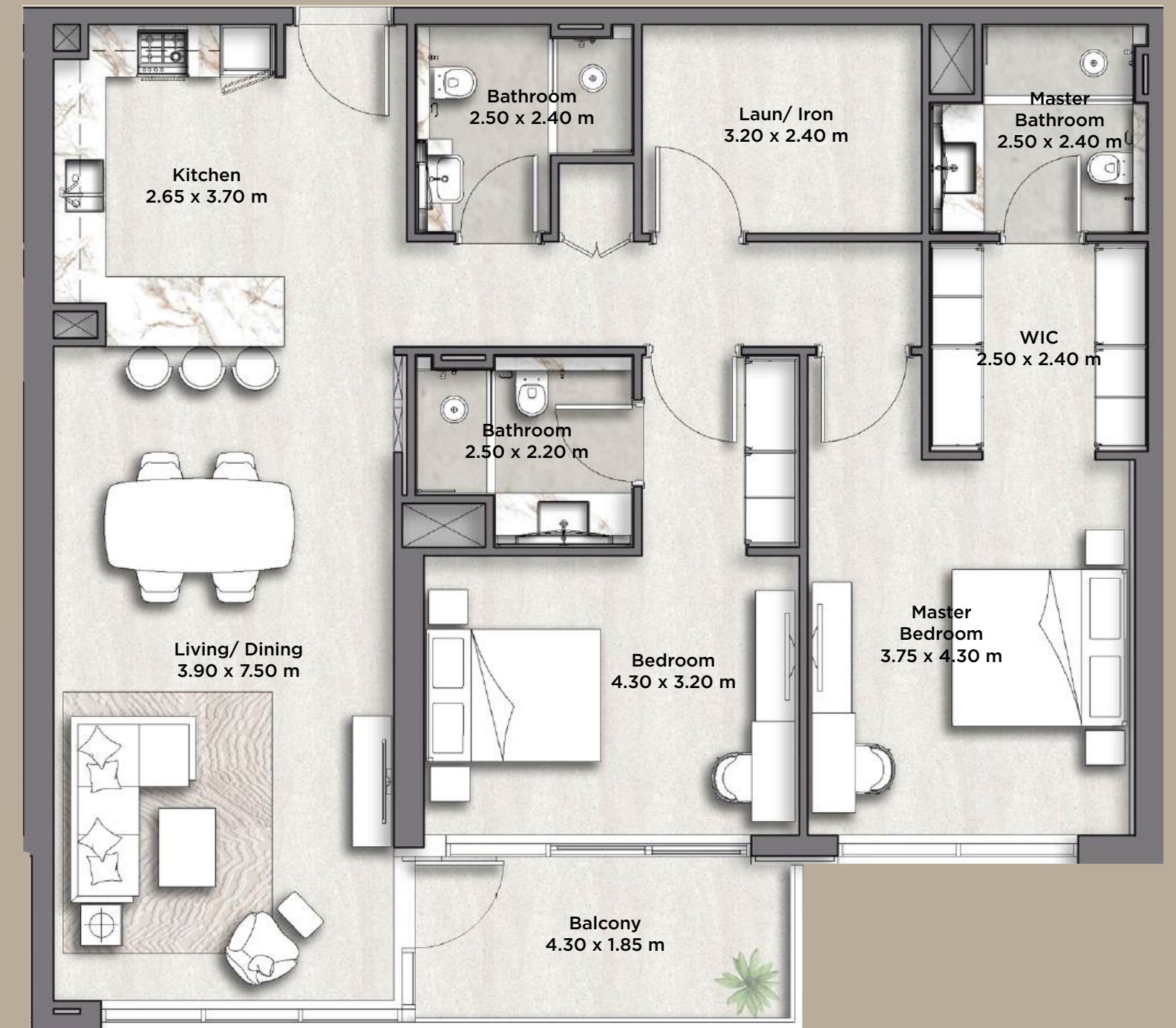
	Sq.Meter	Sq.Feet
Suite	86.07	926
Balcony	7.70	83
Total	93.77	1,009



Disclaimer:
(1) All materials, dimensions and drawings are approximate and for illustration purposes. (2) Information is subject to change without notice. (3) Actual suite area may vary from the stated area.
(4) Suite & the balcony area may vary from floor to floor. (5) Drawings not to scale. (6) The developer reserves the right to make revisions/alterations without any liability whatsoever.
(7) Apartments are sold as unfurnished apartments, without furniture, furnishings, etc.

2 BED APARTMENTS TYPE A

	Sq.Meter	Sq.Feet
Suite	129.25	1,391
Balcony	8.43	91
Total	137.68	1,482



Disclaimer:
(1) All materials, dimensions and drawings are approximate and for illustration purposes. (2) Information is subject to change without notice. (3) Actual suite area may vary from the stated area.
(4) Suite & the balcony area may vary from floor to floor. (5) Drawings not to scale. (6) The developer reserves the right to make revisions/alterations without any liability whatsoever.
(7) Apartments are sold as unfurnished apartments, without furniture, furnishings, etc.

2 BED APARTMENTS TYPE B

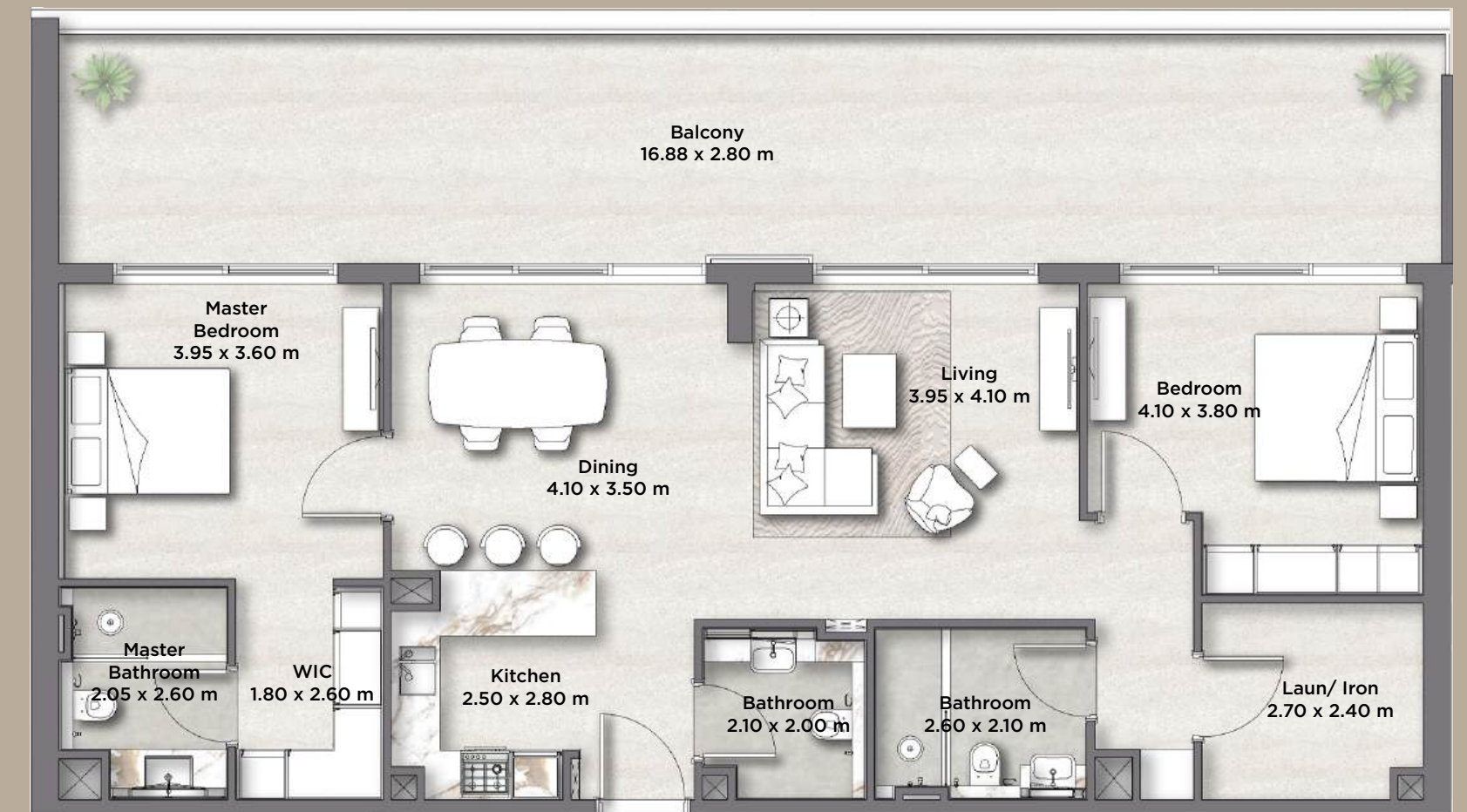
	Sq.Meter	Sq.Feet
Suite	127.40	1,371
Balcony	8.43	91
Total	135.83	1,462



Disclaimer:
(1) All materials, dimensions and drawings are approximate and for illustration purposes. (2) Information is subject to change without notice. (3) Actual suite area may vary from the stated area.
(4) Suite & the balcony area may vary from floor to floor. (5) Drawings not to scale. (6) The developer reserves the right to make revisions/alterations without any liability whatsoever.
(7) Apartments are sold as unfurnished apartments, without furniture, furnishings, etc.

2 BED APARTMENTS TYPE C

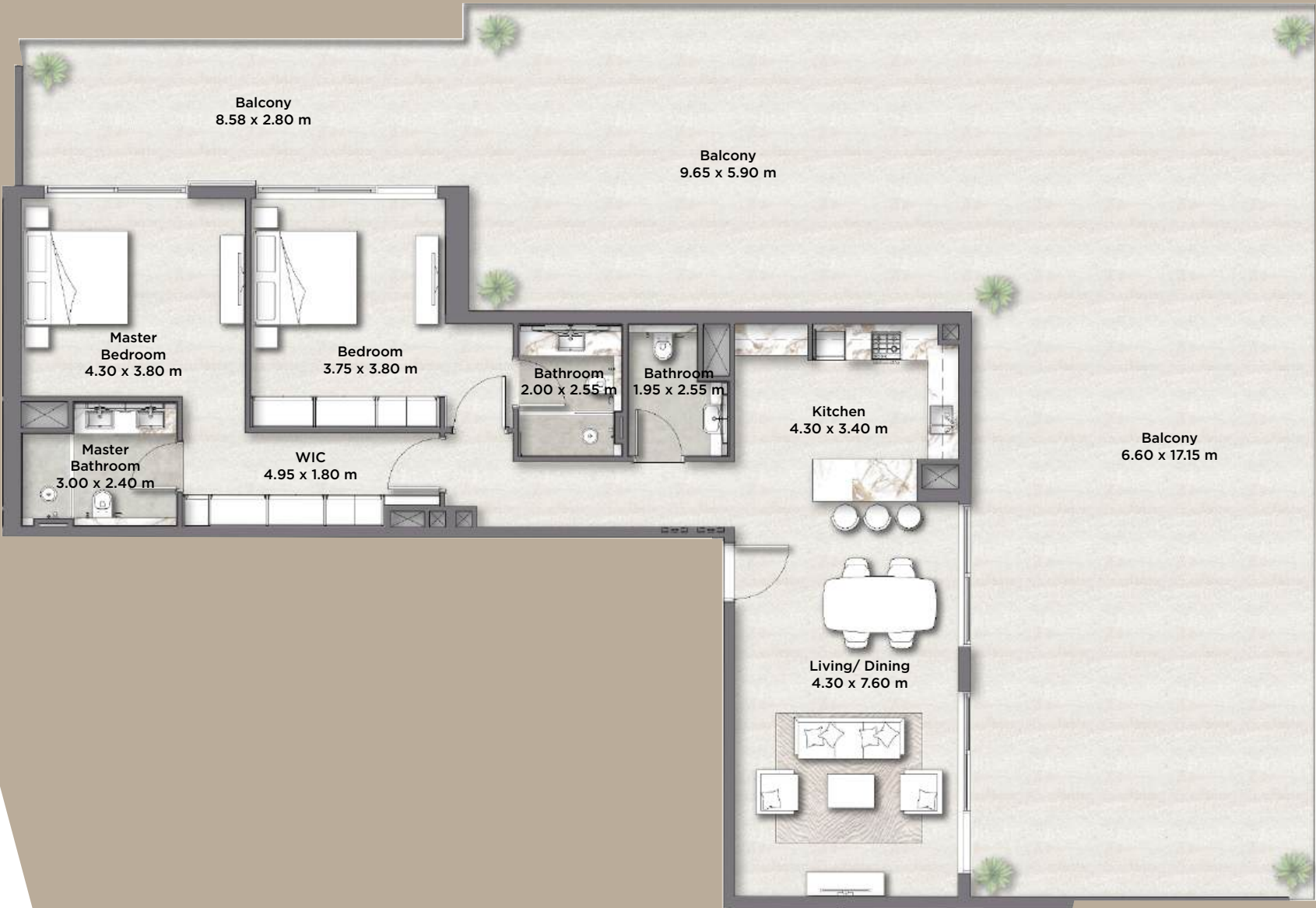
	Sq.Meter	Sq.Feet
Suite	110.01	1,184
Balcony	49.75	536
Total	159.76	1,720



Disclaimer:
(1) All materials, dimensions and drawings are approximate and for illustration purposes. (2) Information is subject to change without notice. (3) Actual suite area may vary from the stated area.
(4) Suite & the balcony area may vary from floor to floor. (5) Drawings not to scale. (6) The developer reserves the right to make revisions/alterations without any liability whatsoever.
(7) Apartments are sold as unfurnished apartments, without furniture, furnishings, etc.

2 BED APARTMENTS TYPE D

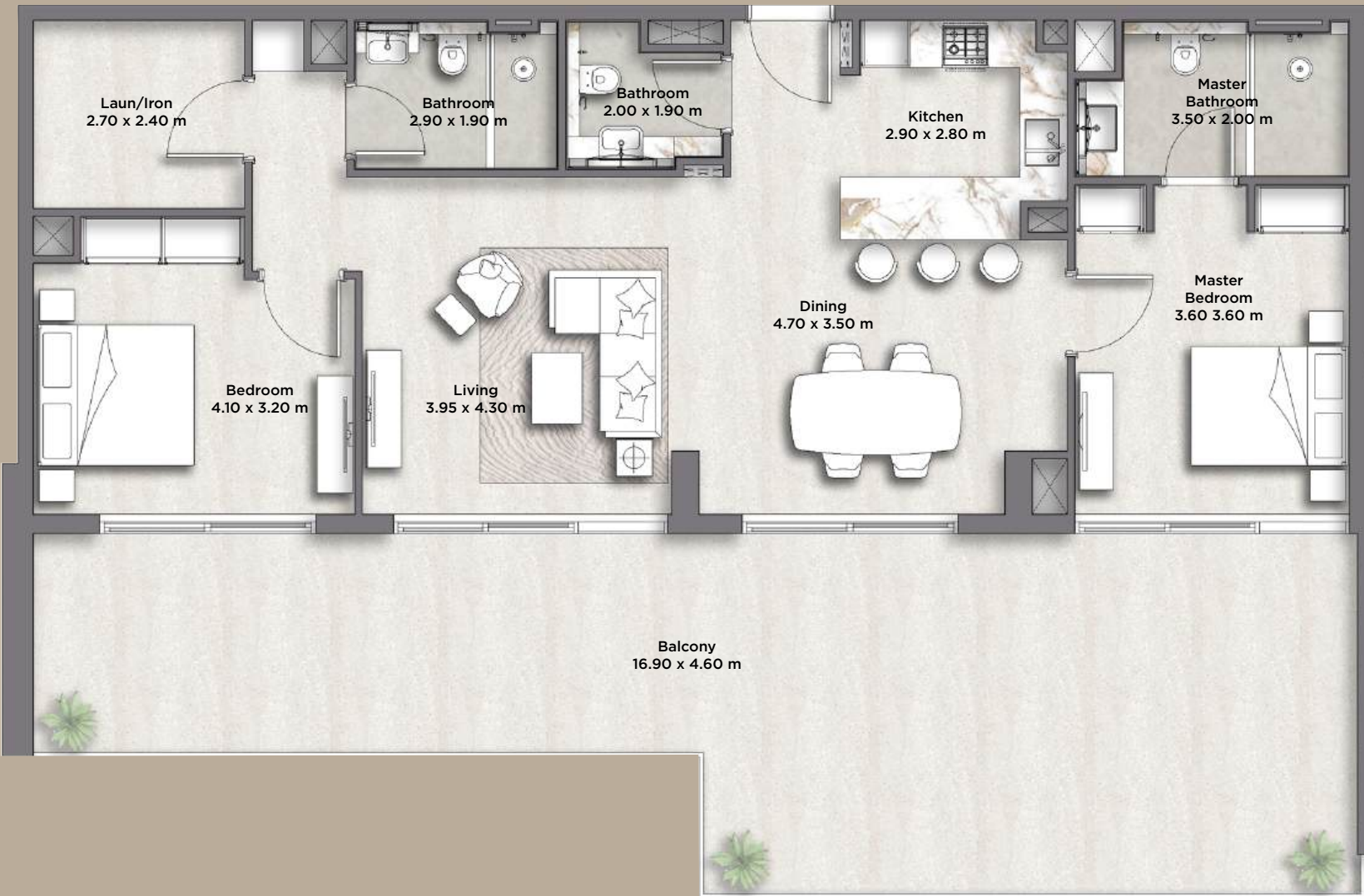
	Sq.Meter	Sq.Feet
Suite	126.12	1,358
Balcony	199.53	2,148
Total	325.65	3,506



Disclaimer:
(1) All materials, dimensions and drawings are approximate and for illustration purposes. (2) Information is subject to change without notice. (3) Actual suite area may vary from the stated area.
(4) Suite & the balcony area may vary from floor to floor. (5) Drawings not to scale. (6) The developer reserves the right to make revisions/alterations without any liability whatsoever.
(7) Apartments are sold as unfurnished apartments, without furniture, furnishings, etc.

2 BED APARTMENTS TYPE E

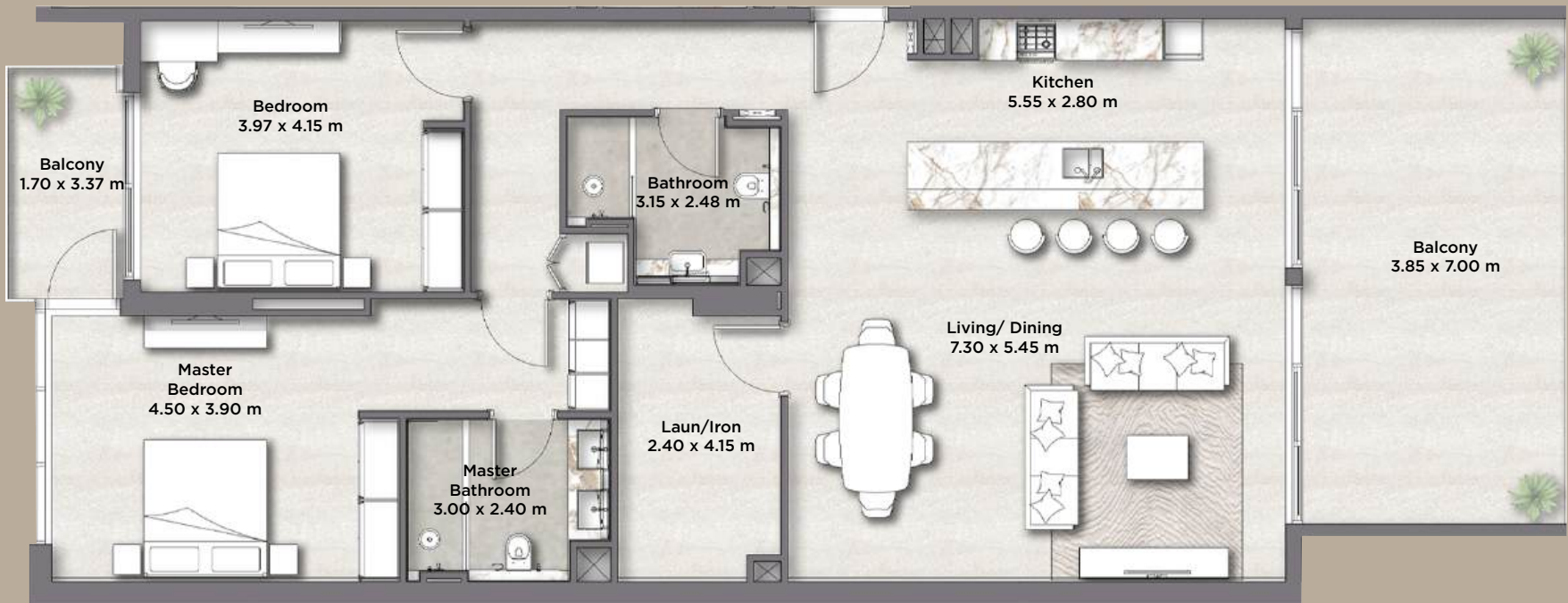
	Sq.Meter	Sq.Feet
Suite	109.22	1,176
Balcony	65.09	701
Total	174.31	1,877



Disclaimer:
(1) All materials, dimensions and drawings are approximate and for illustration purposes. (2) Information is subject to change without notice. (3) Actual suite area may vary from the stated area.
(4) Suite & the balcony area may vary from floor to floor. (5) Drawings not to scale. (6) The developer reserves the right to make revisions/alterations without any liability whatsoever.
(7) Apartments are sold as unfurnished apartments, without furniture, furnishings, etc.

2 BED APARTMENTS TYPE F

	Sq.Meter	Sq.Feet
Suite	150.28	1,618
Balcony	36.18	389
Total	186.46	2,007



Disclaimer:
(1) All materials, dimensions and drawings are approximate and for illustration purposes. (2) Information is subject to change without notice. (3) Actual suite area may vary from the stated area.
(4) Suite & the balcony area may vary from floor to floor. (5) Drawings not to scale. (6) The developer reserves the right to make revisions/alterations without any liability whatsoever.
(7) Apartments are sold as unfurnished apartments, without furniture, furnishings, etc.



ABOUT US



Riviera

GROUP

Riviera Group is a renowned bespoke property developer with an impressive roster of developments across Dubai including La Riviera Tower in Dubai Marina and La Riviera Apartments in Jumeirah Village Circle.

Since 2002, Riviera Group has constructed around 1.9 million square feet and successfully delivered over 1,200+ units in Dubai. Each project is designed to match people's lifestyles, offering ease, comfort, and a sense of security.



PROJECTS IN JUMEIRAH VILLAGE CIRCLE

01. La Riviera Estates,
Mediterranean Villas

02. La Riviera Estates,
The Cote D'azur Apartments

03. La Riviera Apartments

04. La Riviera Azure

05. Riviera Chalet



LODGE
RESIDENCES
BY
Riviera

Sales Center: Office 202, Park Heights Square 1, Dubai Hills Estate, Dubai, United Arab Emirates



+971 56 818 6044



info@rivieragroup.com



rivieragroup.com/lodge