

SOL

B A Y

BUSINESS BAY, DUBAI



A signature lifestyle

Experience heaven at SOL Bay
Business Bay and live a life that
is beyond your best dreams!

SOL

B A Y

03

About SOL Bay

08

Features

09

Location

11

Apartments

15

Floor Plans

23

Property Portfolio



The **SOL BAY** tower brings together inspiring design and luxury to create a world of convenience around you.

SOL

BAY

The opulent tower of Studio, One and Two bedroom apartments are set in a prime spot in Business Bay, by the lavish Downtown and Mohammed Bin Rashid City. At 17 storeys of height, Sol Bay is the latest residential and commercial tower by Sol Properties with direct views of the Burj Khalifa, making it an unparalleled luxury living experience for its residents.

The building features high-end retail outlets and restaurants on the ground floor, offices on 2 podium levels and residential apartments from 3 to 17 floors.





At Sol Bay, live your life in contemporary splendour, surrounded by meticulously detailed and elegant finishing that will appeal to your sophisticated palette. The apartments are designed to maximise space, light and views. Every room is flooded with natural daylight and provides views through the full-height window walls. Expansive in both a vertical and horizontal sense, the windows at Sol Bay are designed to make you feel like you are a part of Dubai's iconic landscape.



Enjoy the use of a fully equipped gymnasium to complement your active lifestyle. Extensive swimming pool offers respite from the heat and an opportunity to supplement your workout.

Then wrap up your day enjoying the company of friends and neighbours at Sol Bay's exquisitely landscaped leisure deck and watch the sunset over the magical cityscape.

This is a view truly worth coming home to.

FEATURES



- 3 basements, ground, 2 podium and 17 residential floors
- Grand residential lobby
- Studio, 1 and 2 bedroom apartments
- Dedicated office lobby
- Retail space and offices
- Swimming pool
- Well-equipped gymnasium
- 7/24 CCTV and building security
- Covered parking
- Panoramic view to Burj Khalifa and Dubai skyline



LOCATION

SOL Bay is set in a location where both, extravagance and convenience is but a stone's throw away. It is parallel to the lavish Downtown and Mohamed Bin Rashid City, and of course, the famous Water Canal.



DUBAI WATER CANAL
2 minutes



BURJ KHALIFA
5 minutes



THE DUBAI MALL
5 minutes



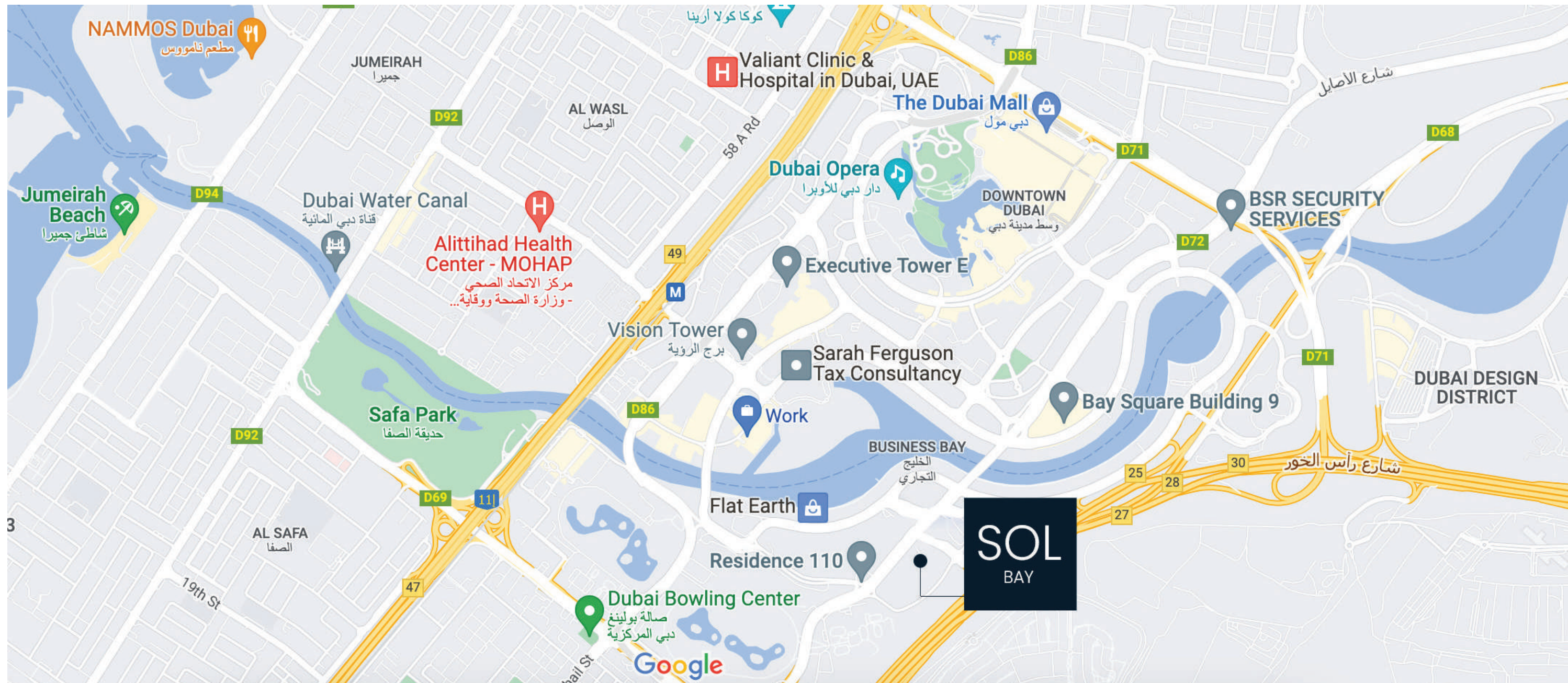
AL KHAIL ROAD
direct access



5 STAR HOTELS
surrounded



DUBAI INTL AIRPORT
13 minutes



LUXURY APARTMENTS THAT EXUDE OPULENCE

Immerse yourself in the flamboyance of the elegantly laid spaces. Our apartments are thoughtfully designed to maximize space, light and views. Every room is flooded with natural daylight and provides exceptional views through the full-height window walls, making you feel like you are part of Dubai's iconic landscape.







FLOOR PLANS

- Every detail has been thought of.
- Designed with function.
- Executed using the best materials.
- By the best teams.
- To ensure a comfortable and elevating living experience.

STUDIO

Internal	473.8 sqft 44 m ²
Balcony	73 sqft 6.8 m ²
Total	546.8 sqft 50.8 m ²



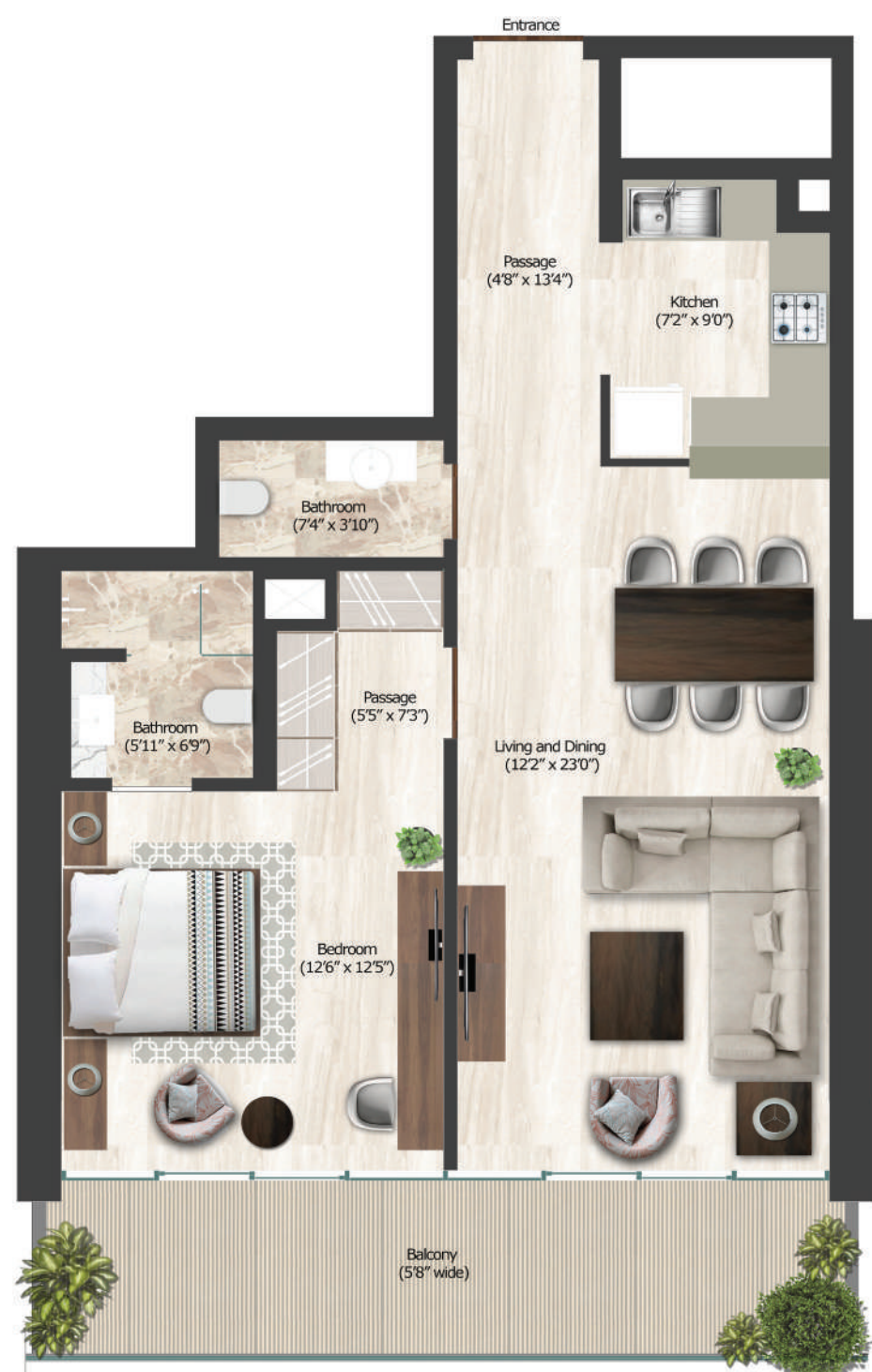
1 BEDROOM – TYPE A

Internal	721 sqft 67 m ²
Balcony	147 sqft 13.65 m ²
Total	868 sqft 80.65 m ²



1 BEDROOM – TYPE B

Internal	861 sqft 80 m ²
Balcony	127 sqft 11.78 m ²
Total	988 sqft 91.78 m ²



1 BEDROOM – TYPE C

Internal	840 sqft 78 m ²
Balcony	214 sqft 20 m ²
Total	1,054 sqft 98 m ²



1 BEDROOM – TYPE D

Internal	839 sqft 78 m ²
Balcony	147 sqft 13.65 m ²
Total	986 sqft 91.65 m ²

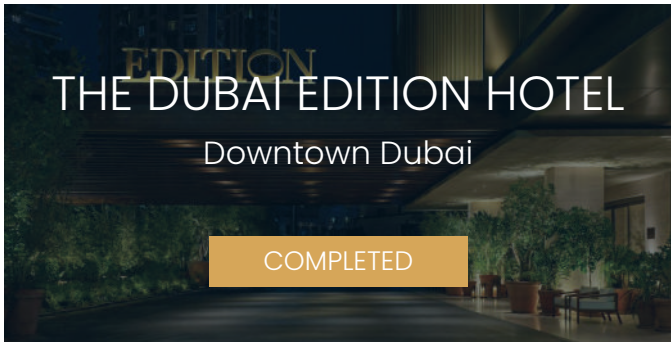
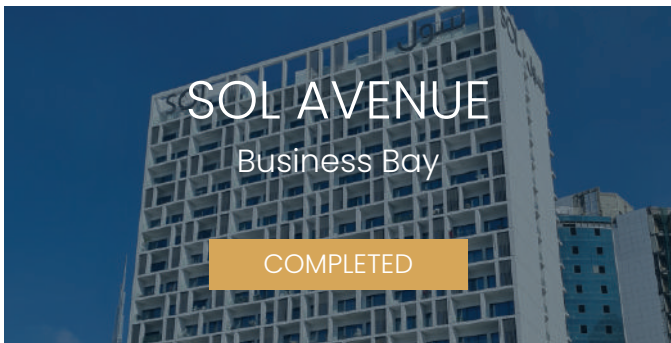


2 BEDROOM

Internal	1,237.8 sqft 115 m ²
Balcony	231.6 sqft 21.52 m ²
Total	1,469.4 sqft 136.52 m ²



40 YEARS OF PERSONALIZED EXPERIENCE TO ESTABLISH A PROPERTY THAT YOU CAN PROUDLY CALL 'YOURS'



SOL

PROPERTIES