

# RAFFLES

RESIDENCES & PENTHOUSES  
THE PALM DUBAI

## UNIT R14



SALES OFFER

# *Sales Offers*

---

**PROJECT NAME:**

Raffles Residences & Penthouses

---

**UNIT OF INTEREST:**

R14

---

**FLOOR:**

Fifth

---

**BEDROOMS:**

4

---

**PRICE:**

AED 36,854,777

---





# Payment Plan

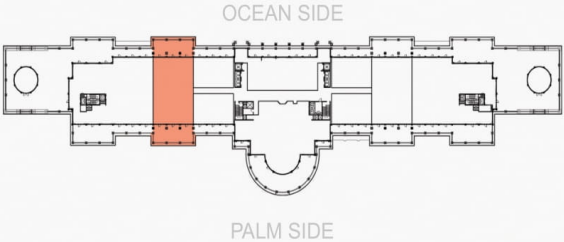
INSTALLMENT NO.	PAYMENT (%) MILESTONE	AMOUNT
1	50% At the time of reservation	AED 18,427,388
	+4% DLD Fee	AED 1,474,191
2	25% 6 months after the reservation date	AED 9,213,694
3	25% On Completion	AED 9,213,694



# Floor Plan



## RAFFLES RESIDENCES AND PENTHOUSES THE PALM DUBAI



### SUITE:

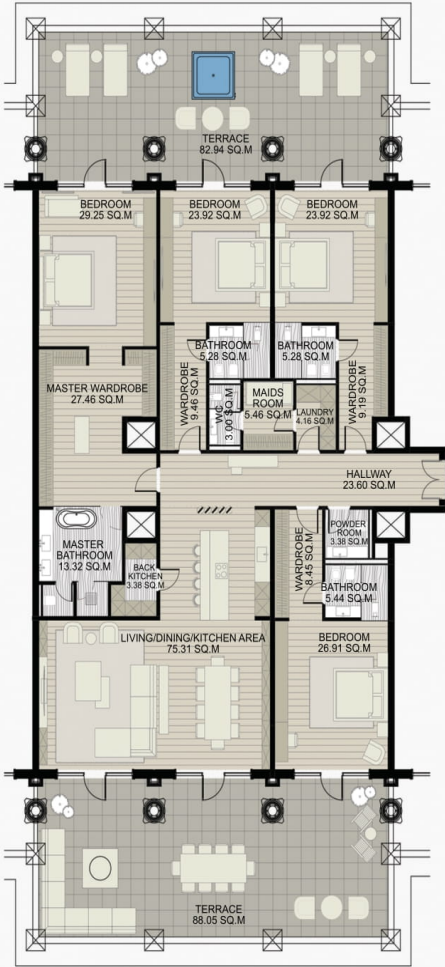
344 sq.m  
3702.816 sq.f

### BALCONY:

183 sq.m  
1969.812 sq.f

### TOTAL:

527 sq.m  
5677 sq.f



**R14**



**EPG**  
HOTELS & RESORTS

Fifth Floor - R14 (4BR)		
Internal Area	344	3703
Terrace	183	1974
Total	527	5677



**RAFFLES**  
RESIDENCES & PENTHOUSES  
THE PALM DUBAI







Actual View  
R14

Palm Side





Actual View  
R14

Ocean Side





