

SOLENA
@
THE ORCHARD PLACE



A New Era in European Inspired Living

From the lush landscapes of the Mediterranean to the visionary skyline of Dubai, Solena at The Orchard Place stands synonymous with European architecture and contemporary sophistication.

Nestled in the heart of Jumeirah Village Circle, Solena offers a curated selection of studios, one- and two-bedroom apartments and expansive three-bedroom penthouses across two elegant towers.

Each residence is artistically curated and shaped by Mediterranean influences, light-filled spaces, clean lines and timeless artistry that celebrate graceful modern living.



AT SOLENA, EXPERIENCE A LIFESTYLE
SHAPED TO YOUR ASPIRATIONS



CONTEMPORARY MEDITERRANEAN
STYLE LIVING



A Luminous Lifestyle

Inspired by the soft glow of Mediterranean sunrises, Solena reflects serenity and brilliance.

Rooted in the Latin *Sol* and the French *Soleil*, both meaning 'sun', Solena is the embodiment of a life illuminated by beauty and warmth.

At Solena, every sunrise casts golden rays across elegant façades with an alluring interplay of light, warmth and shadows.



An aerial photograph of a city, likely Dubai, featuring a prominent circular development in the center. The development is surrounded by a dense network of roads and buildings, with a large, bright, circular area in the middle. The overall color scheme is dominated by warm, golden-brown tones, suggesting a sunset or sunrise. The text "Jumeirah Village Circle" is overlaid on the left side of the image.


Jumeirah
Village Circle

Vibrant
Urban Living





A LIFESTYLE COMMUNITY
CONNECTED WITH NATURE

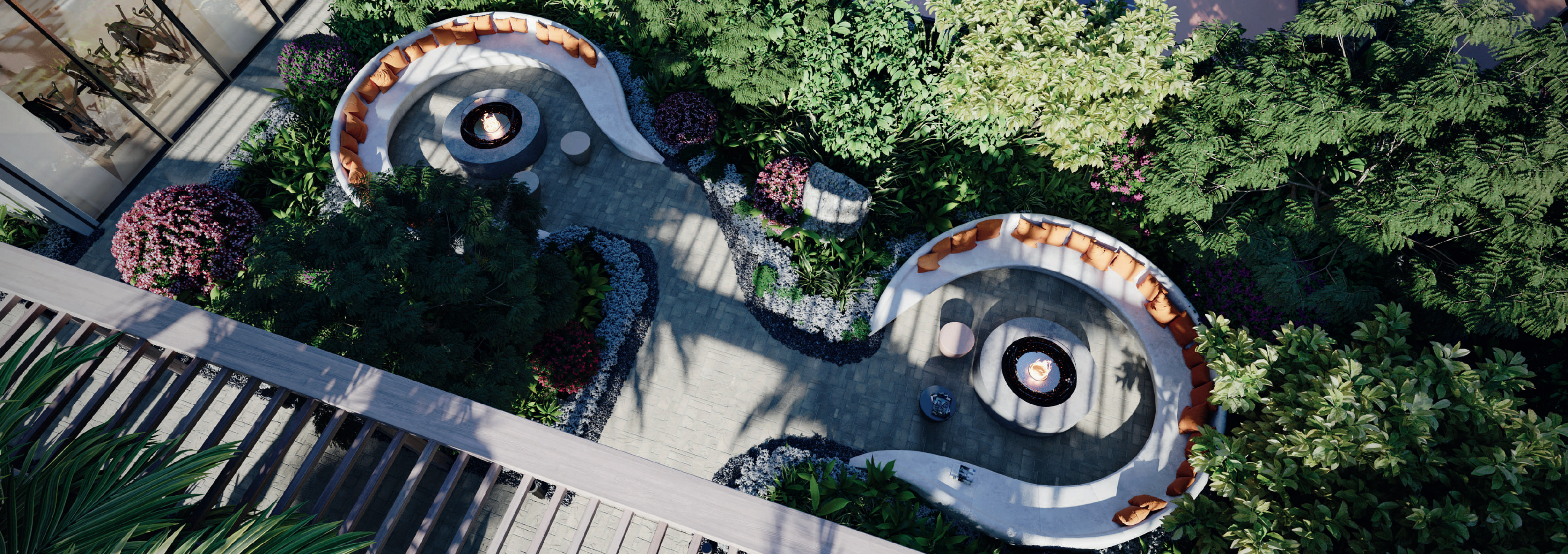


*A*Life in Harmony with Nature

Nestled among the tree-lined boulevards and lush parks of District 12 in Jumeirah Village Circle, Solena at The Orchard Place offers the best of both worlds, a sense of community and connectivity.

A space sculpted by nature, Solena rises within the largest European style neighbourhood in JVC.

This is contemporary living reimagined with design that transcends time.



A Contemporary Community

This enviable residential and lifestyle community is a vision of urban sophistication, blending serenity with modern charm.

Residents enjoy effortless access to hotels, cafés, schools, hospitals, parks, sports facilities and retail experiences.



Urban Connectivity

Ladybird
Kindergarten
2 minutes

Five Hotel
3 minutes

Circle Mall
5 minutes

JSS International School
7 minutes

Brighton College Dubai
7 minutes

GEMS Founders School
7 minutes

The Royal Grammar
School Guildford Dubai
10 minutes

Sports City
10 minutes



SOLENA
THE ORCHARD PLACE

Dubai Miracle Garden
10 mins

Dubai Autodrome
10 mins

Mall of the Emirates
15 mins

Dubai Marina
15 mins

Global Village
15 mins

The Palm Jumeirah
20 mins

Downtown Dubai /
Burj Khalifa
20 mins

Safa Park
20 mins

Dubai International
Airport
30 mins

Al Maktoum International
Airport
30 mins



*An Envable
Lifestyle Address*







European Inspired Amenities

At Solena, a modern European lifestyle unfolds gracefully.

Residents will enjoy a plethora of indoor and outdoor amenities year-round. From leisure and wellness to fitness, Solena places community at the heart of living.

Facilities include a gymnasium, pools, play areas, padel tennis court, yoga terraces, landscaped gardens, BBQ areas and much more.

THE ORCHARD PLACE
JVC, DUBAI





An Effortless Harmony of Timeless Design & Comfort



Embrace a lifestyle where every detail speaks of elegance and exceptional living is intuitive.

From contemporary artistic lobbies to well-designed multi-purpose leisure and business spaces, the community is thoughtfully designed with practicality and modern conveniences at the forefront.



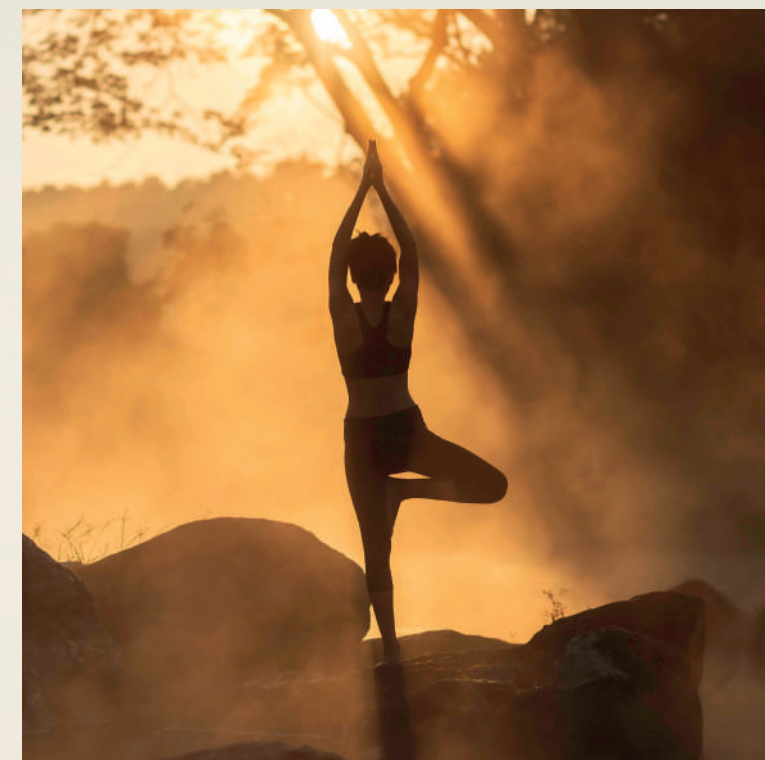


Exclusive Experiences

Retreat into your personal haven and indulge in exclusive facilities. Enjoy private plunge pools, expansive balconies and landscaped terraces, as well as rooftop gardens with panoramic skyline views in the penthouses.

Bask in the glory of breathtaking views, exhilarating sunrises, serene pools and dazzling night skies that enrich each moment.

Uncover a life shaped by nature like never before.



SPACES DESIGNED
FOR WELLNESS



A Green Haven of Rejuvenation

Lounge in spaces that inspire stillness. Landscaped terraces, firepits and lounge seating connect you with nature's elegance. Enjoy alfresco BBQ areas and sunken seating, where community life flourishes with nature seamlessly intertwined across the awe-inspiring outdoor landscape.



A Vibrant Lifestyle Thoughtfully Designed

- Landscaped gardens & green courtyards
- Expansive terraces with firepits & lounge seating
- Adults' and children's swimming pools
- Children's play zones
- A gymnasium and yoga terrace
- A padel tennis court
- Steam rooms
- Lockers & private showers
- Outdoor seating areas
- BBQ areas for alfresco dining
- A contemporary lobby
- Business lounges & meeting spaces



Community Amenities





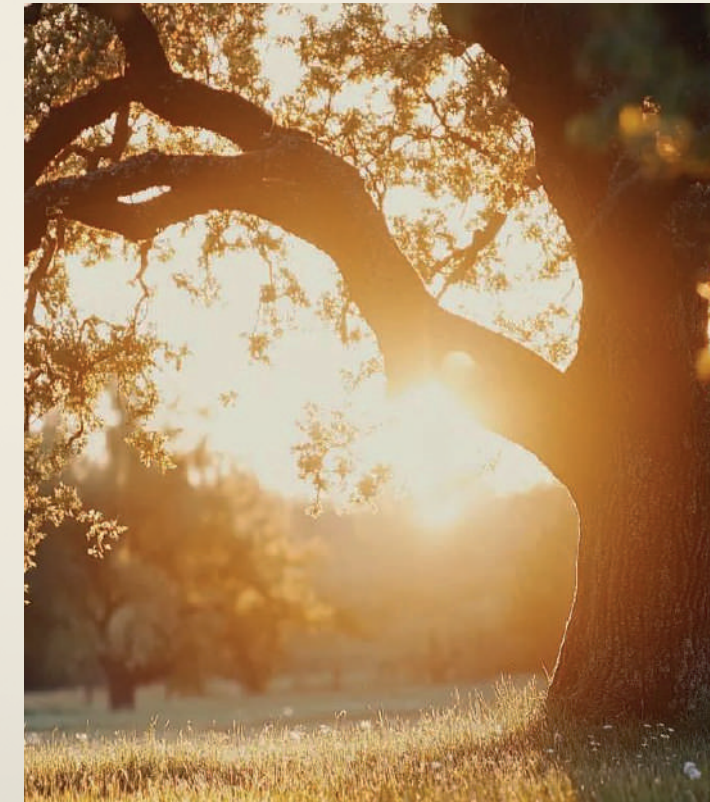
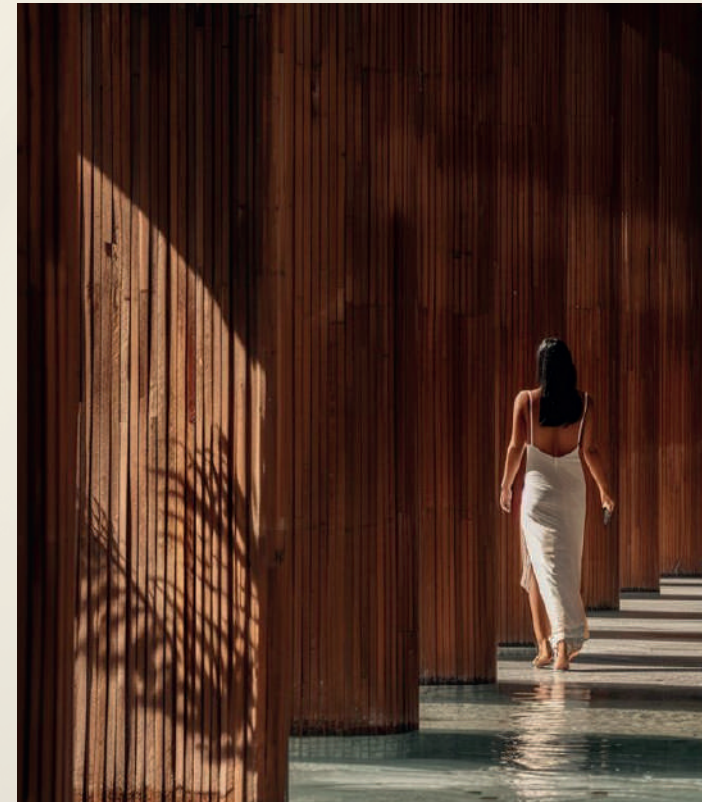
THE ORCHARD
PLACE



Exquisitely Crafted with Mediterranean Influences

All residences feature floor-to-ceiling windows, high-quality sanitary ware, built-in wardrobes and premium finishes throughout.

Homeowners will also enjoy private sun-bathed terraces with panoramic views. Select apartments include private plunge pools.





TIMELESS INTERIORS
WITH PREMIUM FINISHES





DESIGNED AND STYLED
TO PERFECTION



SPACES DESIGNED FOR
MODERN LIVING & COMFORT





FLOOR-TO-CEILING
WINDOWS & SUN-BATHED TERRACES



ELEGANT MODERN
BATHROOMS





S E R E N E O U T D O O R S P A C E S





SOLENA

@
THE ORCHARD PLACE

Developer: Peak Summit Real Estate Development LLC, Registered at Real Estate Regulatory Agency under the number 1476.
Project Registration number 2629.

DISCLAIMER

Every effort has been made to ensure the accuracy and reliability of the information provided in this brochure. The content provided in the brochure is for informational purposes exclusively. It is not intended to include any assurances or representations or be construed as an offer to sell a unit in the Project. No details provided in the brochure shall be regarded as the terms and conditions of a prospective sale and purchase agreement, and no statements should be relied upon unless made in the applicable sale and purchase agreement. The details and images pertaining to the various features of the Project recorded in the brochure are used as an indication of the actual designs, and the actual designs and layouts may vary in appearance. All dimensions, floor plans and specifications are estimates which may vary with actual construction and may be subject to change. Developer reserves the right to make any variations in the Project's interest without prior notice. All depictions of furniture, appliances and other matters of detail, including, without limitation, finishing and decoration, are conceptual and not necessarily included in each unit. Furnishings are only included if and to the extent provided in the applicable sale and purchase agreement. All prices and specifications are preliminary unless provided in the applicable sale and purchase agreement. Renderings illustrate proposed views, which are not identical to each unit. Any view from a unit or other segment of the Project may be limited or eliminated by future development or forces of nature, and Developer in no manner guarantees the continuing existence of any view. All establishments and commercial businesses appearing in the brochure are subject to change at any time, and no representations regarding the establishments and businesses within the Project may be relied upon. All the contents available in the brochure are protected by copyright law and may not be modified or used in any manner without the consent of Developer. The Developer bears no responsibility or liability for the accuracy, content, completeness, legality, or reliability of the information contained in this brochure.

© All rights reserved. TM The Orchard Place registered and protected under the UAE Law.
www.theorchardplace.ae

SOLENA
@
THE ORCHARD PLACE

DEVELOPED BY
PEAK SUMMIT
REAL ESTATE DEVELOPMENT LLC.

POWERED BY
refine