



قنال فرونت

CANAL FRONT

ريزيدنسز RESIDENCES

CANAL FRONT 3
FLOOR PLANS

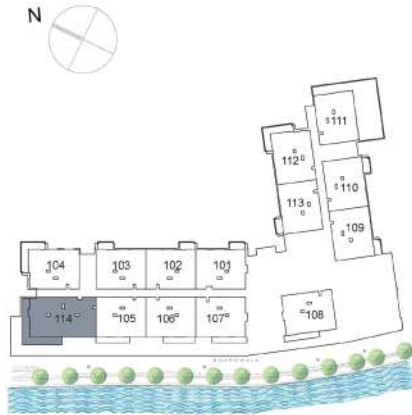
3 BEDROOMS



CF3

First Floor
3 Bedroom Apartment

CANAL FRONT
RESIDENCES



KEY PLAN

UNIT 114 FIRST FLOOR

| | |
|---------------|-----------------|
| Suite Area: | 1,694.35 sq. ft |
| Balcony Area: | 509.35 sq. ft |
| Total Area: | 2,203.70 sq. ft |



DISCLAIMER: All measurements, dimensions, coordinates and drawings, given as the Floor Plans in the literature are approximate and provided only for the purpose of marketing, illustration, information and general guidance as such drawings are not to scale. All the rooms, sizes, locations, orientations, dimensions, fixtures, fittings, finishes and specifications (including materials for, placement, size of rooms, windows, doors, balcony, furniture's inbuilt wardrobe etc.) provided in the floor plans may vary as the same have been taken from concept designs prior to the actual development/construction and therefore their accuracy in relation to actual construction cannot be confirmed. Hence, we make no guarantee, warranty or representation as to the accuracy and completeness of the Floor plan information as changes may be made during the development process, without notice. Always refer to latest IFC design available in the sales office for the most accurate representation of all construction details.

CF3

Second Floor 3 Bedroom Apartment

CANAL FRONT
RESIDENCES



UNIT 205 SECOND FLOOR

Suite Area: 1,694.89 sq. ft

Balcony Area: 165.33 sq. ft

Total Area: 1,860.22 sq. ft

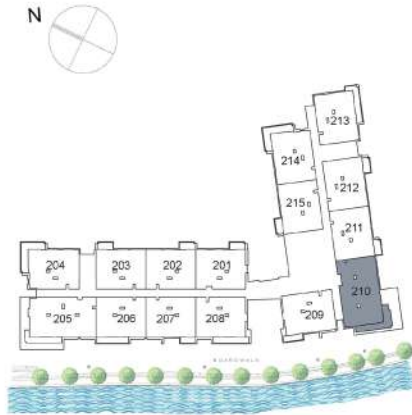


DISCLAIMER: All measurements, dimensions, coordinates and drawings, given as the Floor Plans in the literature are approximate and provided only for the purpose of marketing, illustration, information and general guidance as such drawings are not to scale. All the rooms, sizes, locations, orientations, dimensions, fixtures, fittings, finishes and specifications (including materials for, placement, size of rooms, windows, doors, balcony, furniture's inbuilt wardrobe etc.) provided in the floor plans may vary as the same have been taken from concept designs prior to the actual development/construction and therefore their accuracy in relation to actual construction cannot be confirmed. Hence, we make no guarantee, warranty or representation as to the accuracy and completeness of the Floor plan information as changes may be made during the development process, without notice. Always refer to latest IFC design available in the sales office for the most accurate representation of all construction details.

CF3

Second Floor 3 Bedroom Apartment

CANAL FRONT
RESIDENCES



KEY PLAN

UNIT 210 SECOND FLOOR

Suite Area: 1,697.79 sq. ft

Balcony Area: 229.06 sq. ft

Total Area: 1,926.85 sq. ft

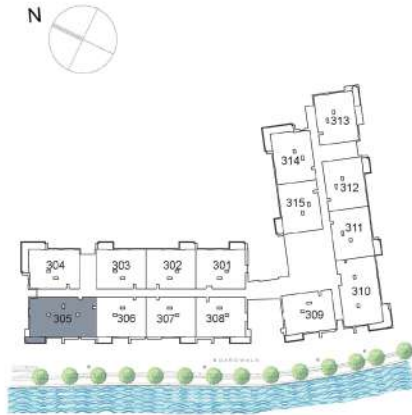


DISCLAIMER: All measurements, dimensions, coordinates and drawings, given as the Floor Plans in the literature are approximate and provided only for the purpose of marketing, illustration, information and general guidance as such drawings are not to scale. All the rooms, sizes, locations, orientations, dimensions, fixtures, fittings, finishes and specifications (including materials for, placement, size of rooms, windows, doors, balcony, furniture's inbuilt wardrobe etc.) provided in the floor plans may vary as the same have been taken from concept designs prior to the actual development/construction and therefore their accuracy in relation to actual construction cannot be confirmed. Hence, we make no guarantee, warranty or representation as to the accuracy and completeness of the Floor plan information as changes may be made during the development process, without notice. Always refer to latest IFC design available in the sales office for the most accurate representation of all construction details.

CF3

Third Floor 3 Bedroom Apartment

CANAL FRONT
RESIDENCES



KEY PLAN

UNIT 305 THIRD FLOOR

Suite Area: 1,695.32 sq. ft

Balcony Area: 76.53 sq. ft

Total Area: 1,771.85 sq. ft

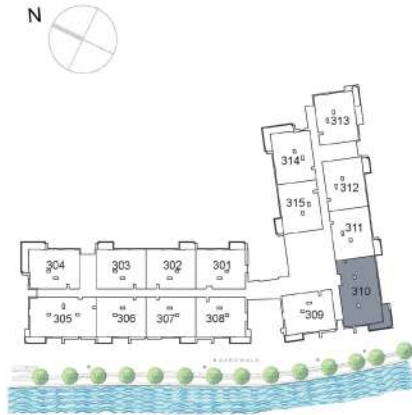


DISCLAIMER: All measurements, dimensions, coordinates and drawings, given as the Floor Plans in the literature are approximate and provided only for the purpose of marketing, illustration, information and general guidance as such drawings are not to scale. All the rooms, sizes, locations, orientations, dimensions, fixtures, fittings, finishes and specifications (including materials for, placement, size of rooms, windows, doors, balcony, furniture's inbuilt wardrobe etc.) provided in the floor plans may vary as the same have been taken from concept designs prior to the actual development/construction and therefore their accuracy in relation to actual construction cannot be confirmed. Hence, we make no guarantee, warranty or representation as to the accuracy and completeness of the Floor plan information as changes may be made during the development process, without notice. Always refer to latest IFC design available in the sales office for the most accurate representation of all construction details.

CF3

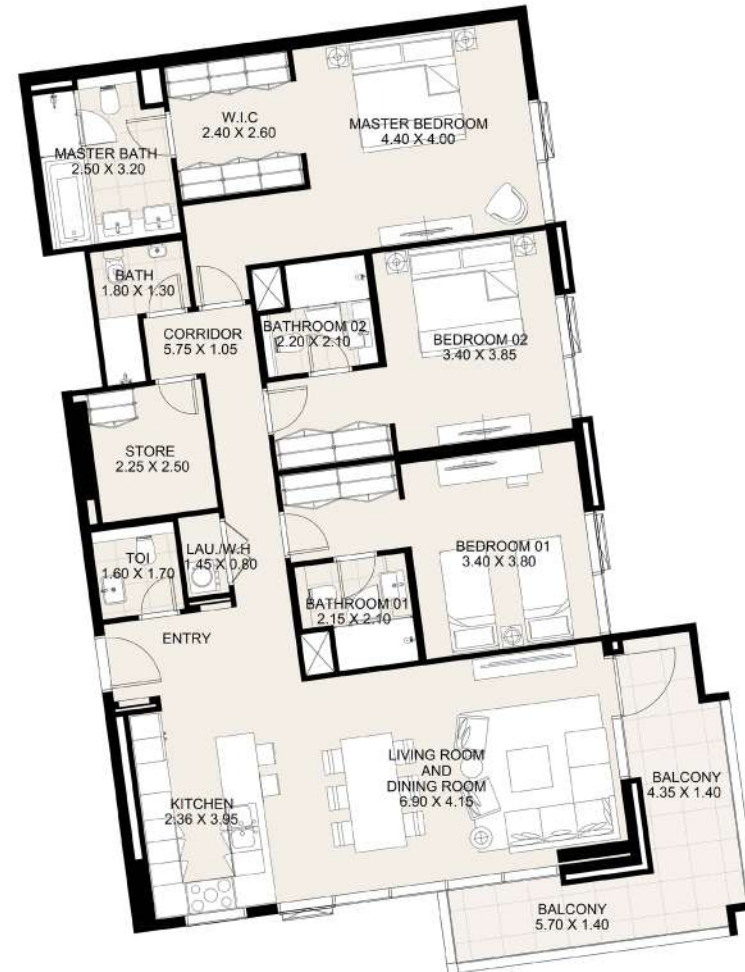
Third Floor
3 Bedroom Apartment

CANAL FRONT
RESIDENCES



KEY PLAN

| UNIT 310 | THIRD FLOOR |
|---------------|-----------------|
| Suite Area: | 1,698.76 sq. ft |
| Balcony Area: | 176.53 sq. ft |
| Total Area: | 1,875.29 sq. ft |

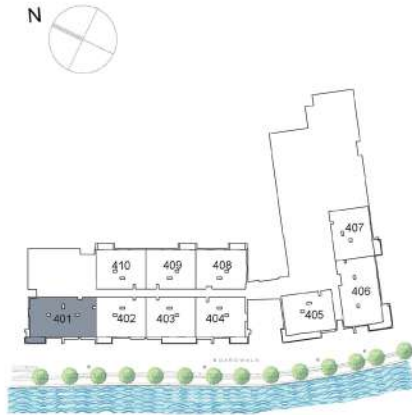


DISCLAIMER: All measurements, dimensions, coordinates and drawings, given as the Floor Plans in the literature are approximate and provided only for the purpose of marketing, illustration, information and general guidance as such drawings are not to scale. All the rooms, sizes, locations, orientations, dimensions, fixtures, fittings, finishes and specifications (including materials for, placement, size of rooms, windows, doors, balcony, furniture's inbuilt wardrobe etc.) provided in the floor plans may vary as the same have been taken from concept designs prior to the actual development/construction and therefore their accuracy in relation to actual construction cannot be confirmed. Hence, we make no guarantee, warranty or representation as to the accuracy and completeness of the Floor plan information as changes may be made during the development process, without notice. Always refer to latest IFC design available in the sales office for the most accurate representation of all construction details.

CF3

Fourth Floor 3 Bedroom Apartment

CANAL FRONT
RESIDENCES



KEY PLAN

UNIT 401 FOURTH FLOOR

Suite Area: 1,695.32 sq. ft

Balcony Area: 75.24 sq. ft

Total Area: 1,770.56 sq. ft

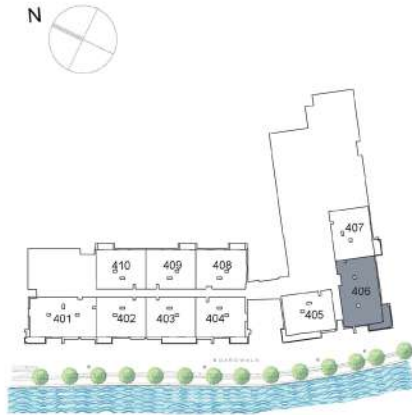


DISCLAIMER: All measurements, dimensions, coordinates and drawings, given as the Floor Plans in the literature are approximate and provided only for the purpose of marketing, illustration, information and general guidance as such drawings are not to scale. All the rooms, sizes, locations, orientations, dimensions, fixtures, fittings, finishes and specifications (including materials for, placement, size of rooms, windows, doors, balcony, furniture's inbuilt wardrobe etc.) provided in the floor plans may vary as the same have been taken from concept designs prior to the actual development/construction and therefore their accuracy in relation to actual construction cannot be confirmed. Hence, we make no guarantee, warranty or representation as to the accuracy and completeness of the Floor plan information as changes may be made during the development process, without notice. Always refer to latest IFC design available in the sales office for the most accurate representation of all construction details.

CF3

Fourth Floor 3 Bedroom Apartment

CANAL FRONT
RESIDENCES



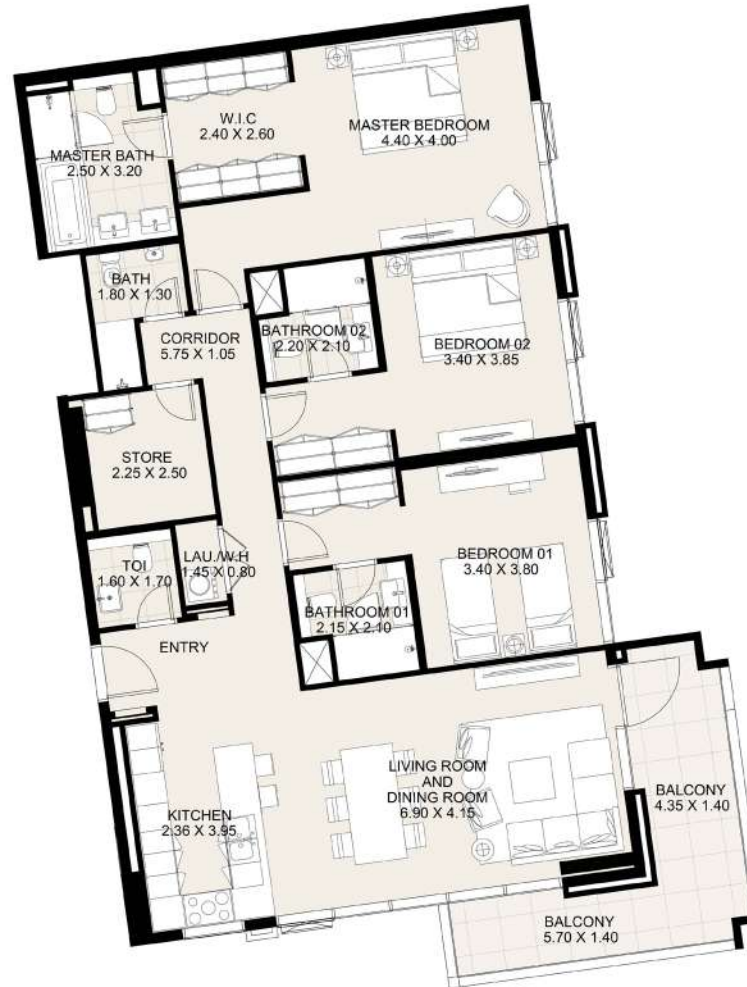
KEY PLAN

UNIT 406 FOURTH FLOOR

Suite Area: 1,698.87 sq. ft

Balcony Area: 179.54 sq. ft

Total Area: 1,878.41 sq. ft



DISCLAIMER: All measurements, dimensions, coordinates and drawings, given as the Floor Plans in the literature are approximate and provided only for the purpose of marketing, illustration, information and general guidance as such drawings are not to scale. All the rooms, sizes, locations, orientations, dimensions, fixtures, fittings, finishes and specifications (including materials for, placement, size of rooms, windows, doors, balcony, furniture's inbuilt wardrobe etc.) provided in the floor plans may vary as the same have been taken from concept designs prior to the actual development/construction and therefore their accuracy in relation to actual construction cannot be confirmed. Hence, we make no guarantee, warranty or representation as to the accuracy and completeness of the Floor plan information as changes may be made during the development process, without notice. Always refer to latest IFC design available in the sales office for the most accurate representation of all construction details.



قنال فرونت

CANAL FRONT

ريزيدنسز RESIDENCES

