



AL HAMRA GREENS

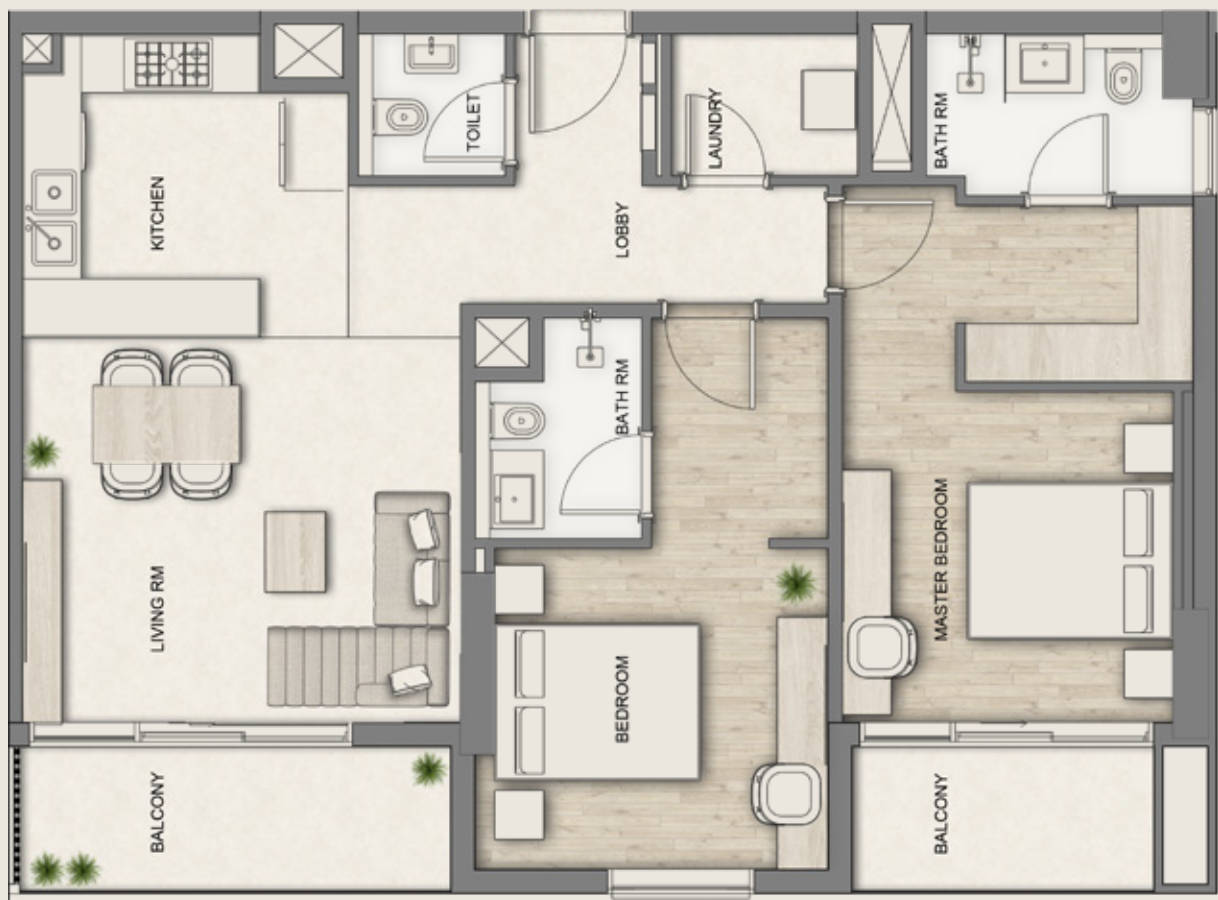
Reconnect with living

UNIT PLAN

2 BEDROOM - TYPE A

(1st - 8th FLOOR), PARTIAL GOLF COURSE / RAK CENTRAL VIEW

TOTAL AREA | 1082 - 1197 SQ.FT.



PRICES FROM **₹1.9M TO ₹2.05M**

DEPENDENT ON FLOOR AND VIEW



AL HAMRA GREENS

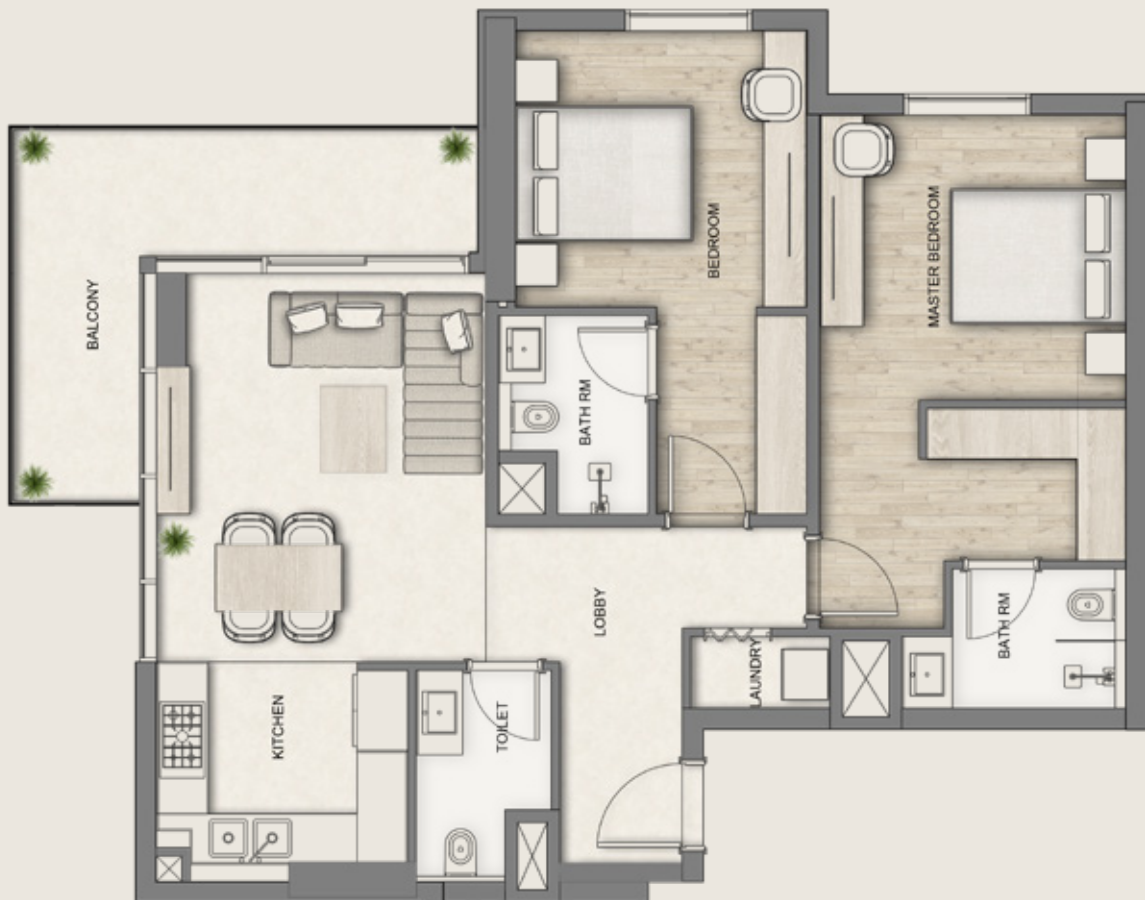
Reconnect with living

UNIT PLAN

2 BEDROOM - TYPE B

(1st - 8th FLOOR), GOLF COURSE / AL HAMRA VILLAGE VIEW

TOTAL AREA | 1048 - 1158 SQ.FT.



PRICES FROM **₹1.95M** TO **₹2.1M**

DEPENDENT ON FLOOR AND VIEW



AL HAMRA GREENS

Reconnect with living

UNIT PLAN

2 BEDROOM - TYPE C

(1st - 8th FLOOR), GOLF COURSE / AL HAMRA VILLAGE VIEW

TOTAL AREA | 1154 - 1275 SQ.FT.



PRICES FROM **₹2.15M TO ₹2.25M**

DEPENDENT ON FLOOR AND VIEW