



AARK  
RESIDENCES

FLOOR PLAN

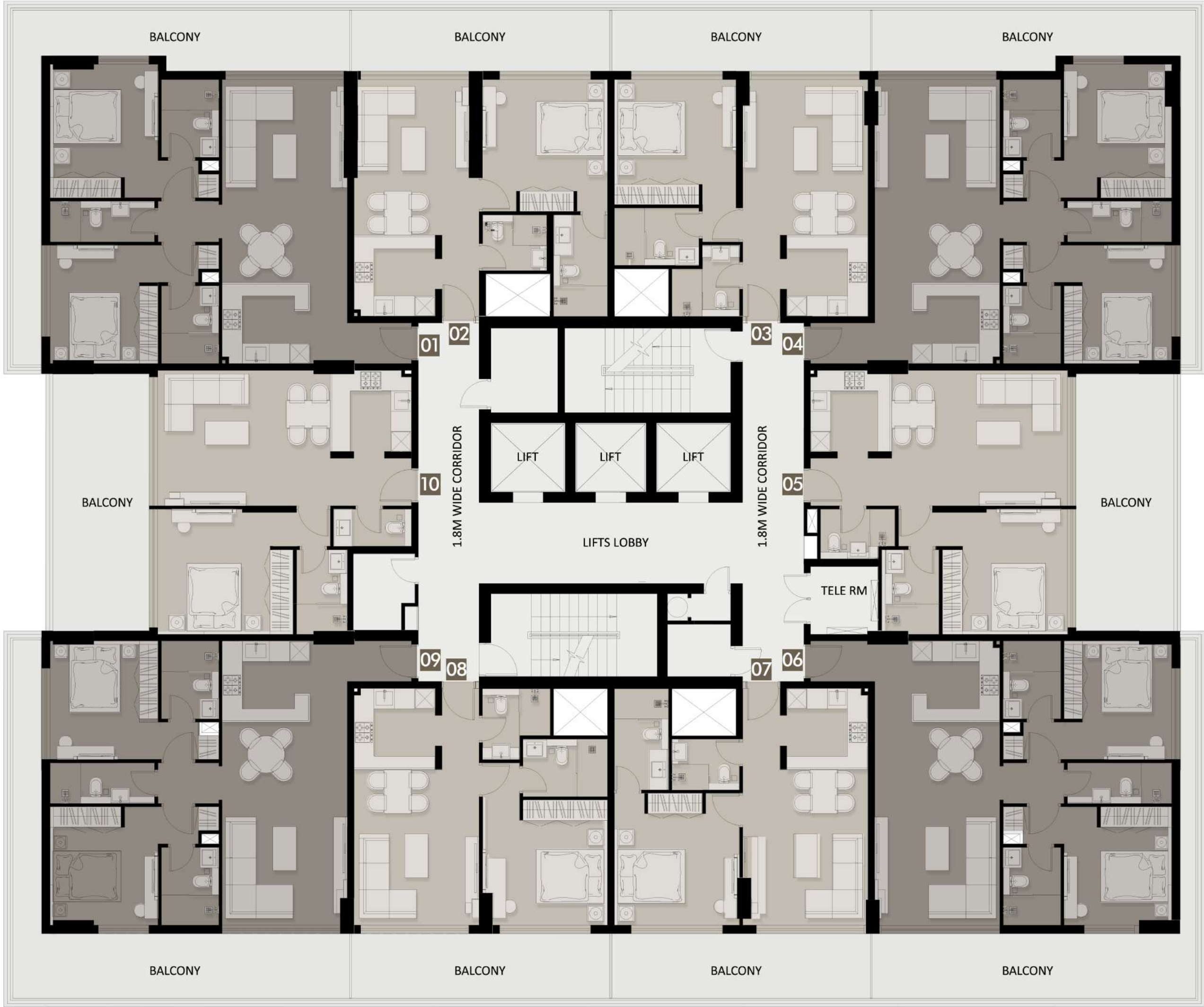
PRESENTED BY  
DECA



OVERALL PLAN

TYPICAL FLOOR

- ONE BEDROOM
- TWO BEDROOM





# UNIT -01

## TWO BEDROOM



### SUITE AREA

877.58 SQ.FT

81.53 SQ.M

### BALCONY AREA

367.69 SQ.FT

34.16 SQ.M

### TOTAL AREA

1245.28 SQ.FT

115.69 SQ.M



1. All dimensions are in imperial and metric, and measured from finish to finish excluding construction tolerances.
2. All materials, dimensions, and drawings are approximate only.
3. Information is subject to change without notice, at developer's absolute discretion.
4. Actual area may vary from the stated area.
5. Drawings not to scale.
6. All images used are for illustrative purposes only and do not represent the actual size, features, specifications, fittings, and furnishings.
7. The developer reserves the right to make revisions / alterations, at it's absolute discretion, without any liability whatsoever.







UNIT -02

# ONE BEDROOM

## SUITE AREA

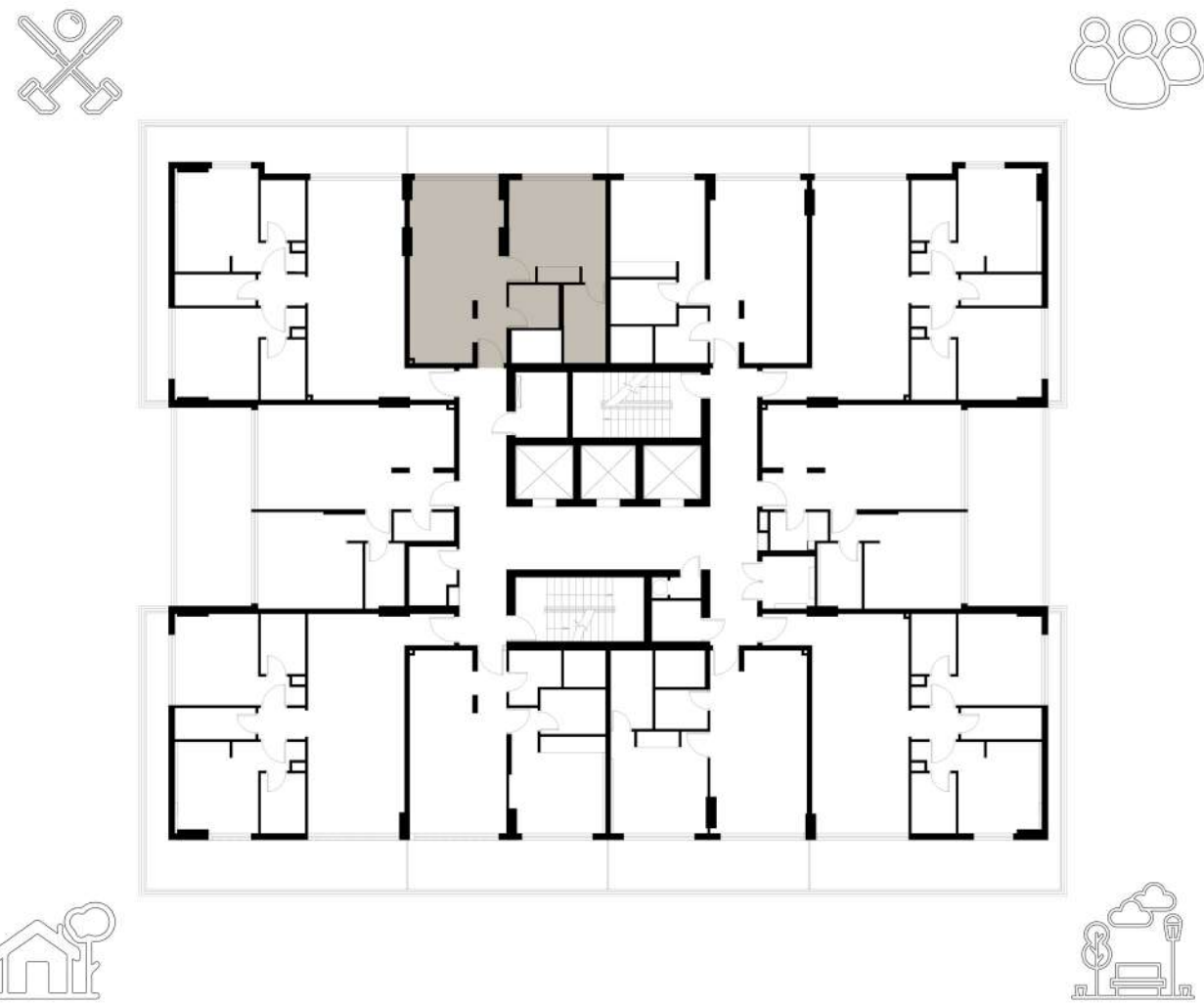
568.66 SQ.FT      52.83 SQ.M

## BALCONY AREA

203.11 SQ.FT      18.87 SQ.M

## TOTAL AREA

771.77 SQ.FT      71.70 SQ.M



1. All dimensions are in imperial and metric, and measured from finish to finish excluding construction tolerances. 2. All materials, dimensions, and drawings are approximate only. 3. Information is subject to change without notice, at developer's absolute discretion. 4. Actual area may vary from the stated area. 5. Drawings not to scale. 6. All images used are for illustrative purposes only and do not represent the actual size, features, specifications, fittings, and furnishings. 7. The developer reserves the right to make revisions / alterations, at it's absolute discretion, without any liability whatsoever.







UNIT -03

# ONE BEDROOM

## SUITE AREA

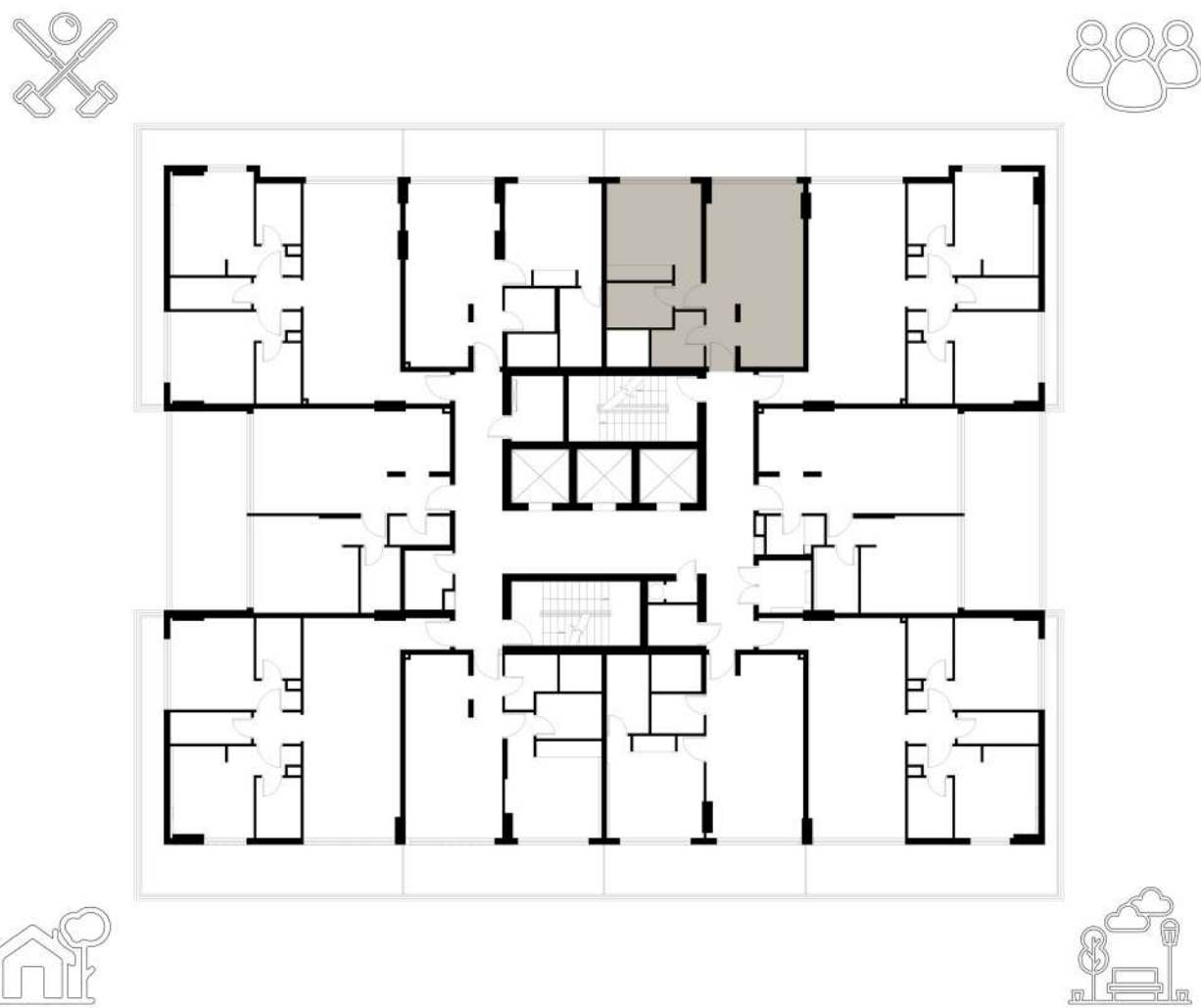
570.49 SQ.FT      53.00 SQ.M

## BALCONY AREA

203.11 SQ.FT      18.87 SQ.M

## TOTAL AREA

773.60 SQ.FT      71.87 SQ.M



1. All dimensions are in imperial and metric, and measured from finish to finish excluding construction tolerances. 2. All materials, dimensions, and drawings are approximate only. 3. Information is subject to change without notice, at developer's absolute discretion. 4. Actual area may vary from the stated area. 5. Drawings not to scale. 6. All images used are for illustrative purposes only and do not represent the actual size, features, specifications, fittings, and furnishings. 7. The developer reserves the right to make revisions / alterations, at it's absolute discretion, without any liability whatsoever.







UNIT -04

# TWO BEDROOM

## SUITE AREA

877.58 SQ.FT

81.53 SQ.M

## BALCONY AREA

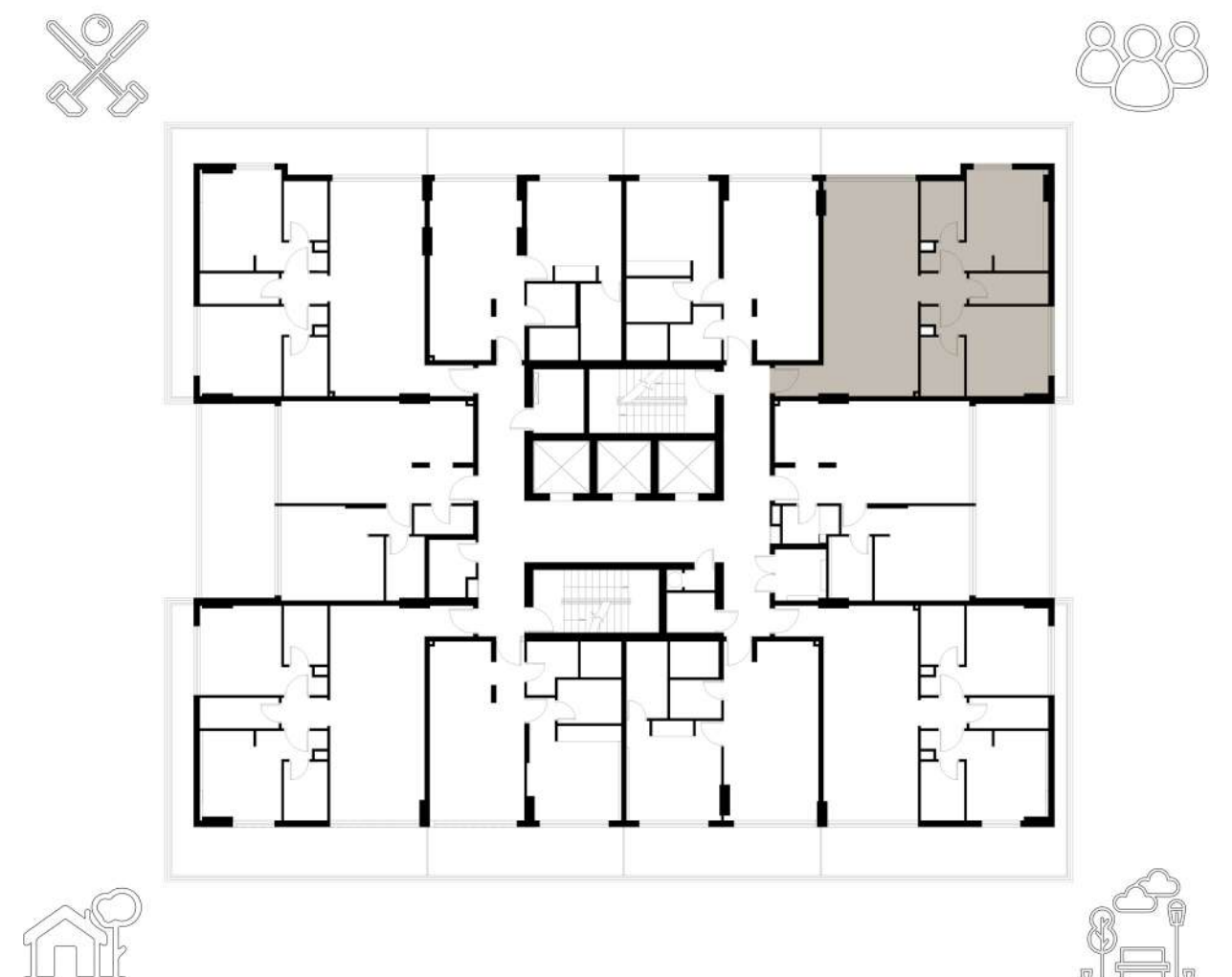
319.69 SQ.FT

29.70 SQ.M

## TOTAL AREA

1197.27 SQ.FT

111.23 SQ.M



1. All dimensions are in imperial and metric, and measured from finish to finish excluding construction tolerances.
2. All materials, dimensions, and drawings are approximate only.
3. Information is subject to change without notice, at developer's absolute discretion.
4. Actual area may vary from the stated area.
5. Drawings not to scale.
6. All images used are for illustrative purposes only and do not represent the actual size, features, specifications, fittings, and furnishings.
7. The developer reserves the right to make revisions / alterations, at it's absolute discretion, without any liability whatsoever.





# ONE BEDROOM



## SUITE AREA

614.73 SQ.FT

57.11 SQ.M

## BALCONY AREA

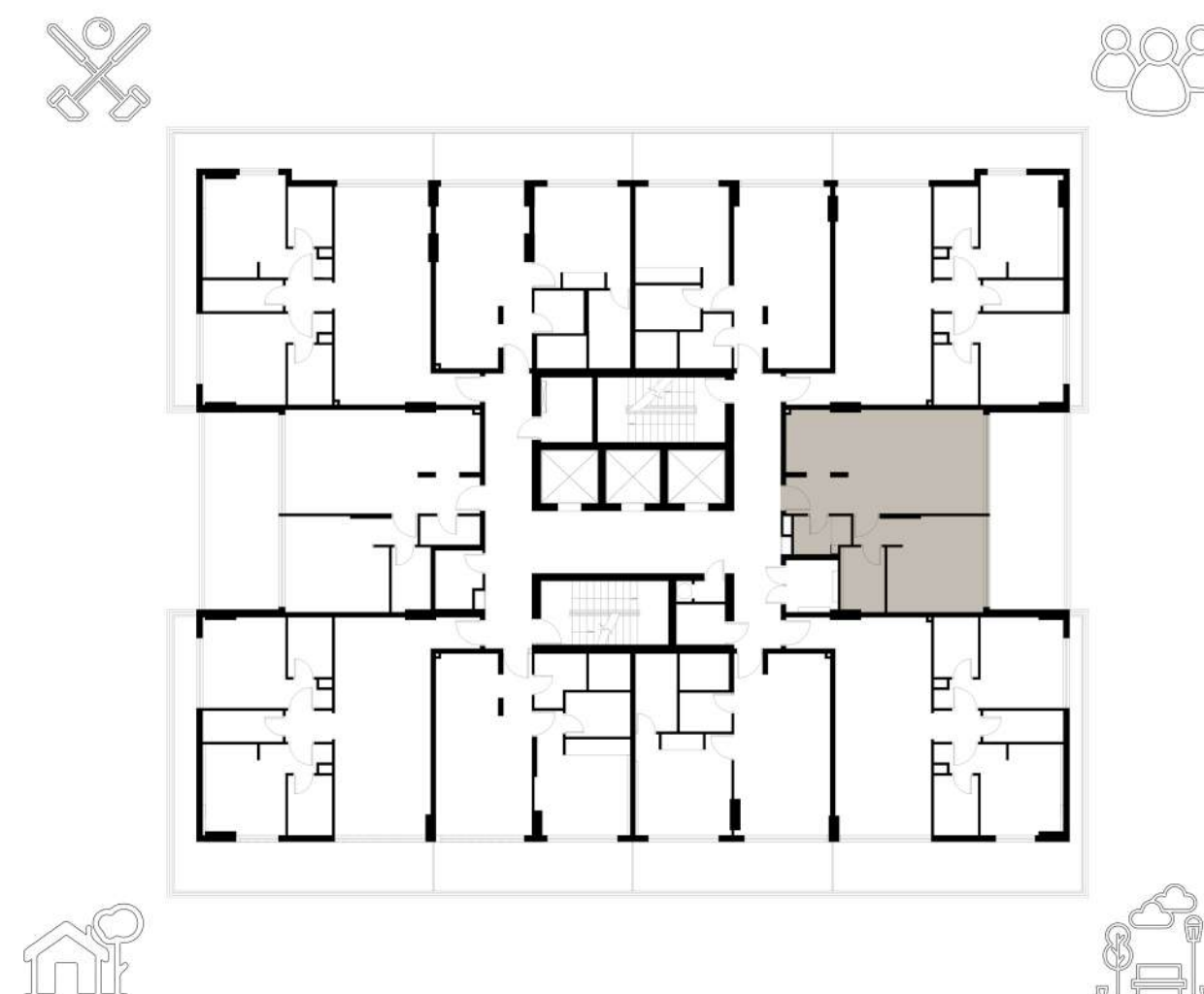
270.82 SQ.FT

25.16 SQ.M

## TOTAL AREA

885.55 SQ.FT

82.27 SQ.M



1. All dimensions are in imperial and metric, and measured from finish to finish excluding construction tolerances.
2. All materials, dimensions, and drawings are approximate only.
3. Information is subject to change without notice, at developer's absolute discretion.
4. Actual area may vary from the stated area.
5. Drawings not to scale.
6. All images used are for illustrative purposes only and do not represent the actual size, features, specifications, fittings, and furnishings.
7. The developer reserves the right to make revisions / alterations, at it's absolute discretion, without any liability whatsoever.





## TWO BEDROOM

## SUITE AREA

860.90 SQ.FT

79.98 SQ.M

## BALCONY AREA

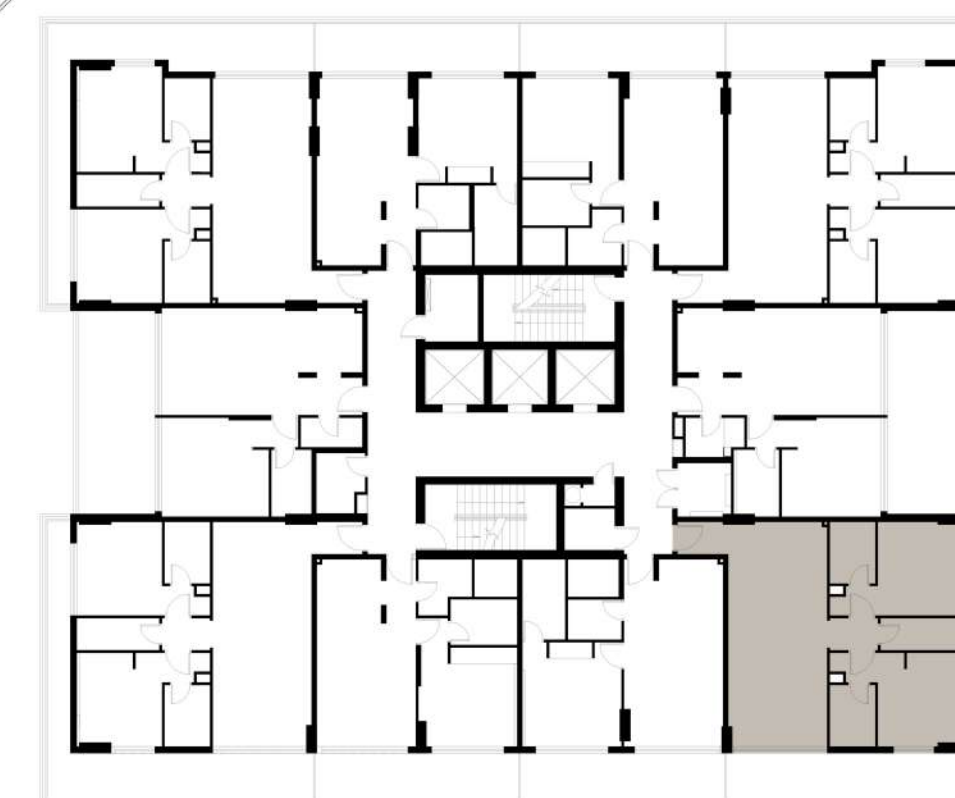
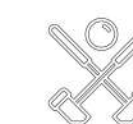
315.81 SQ.FT

29.34 SQ.M

## TOTAL AREA

1176.72 SQ.FT

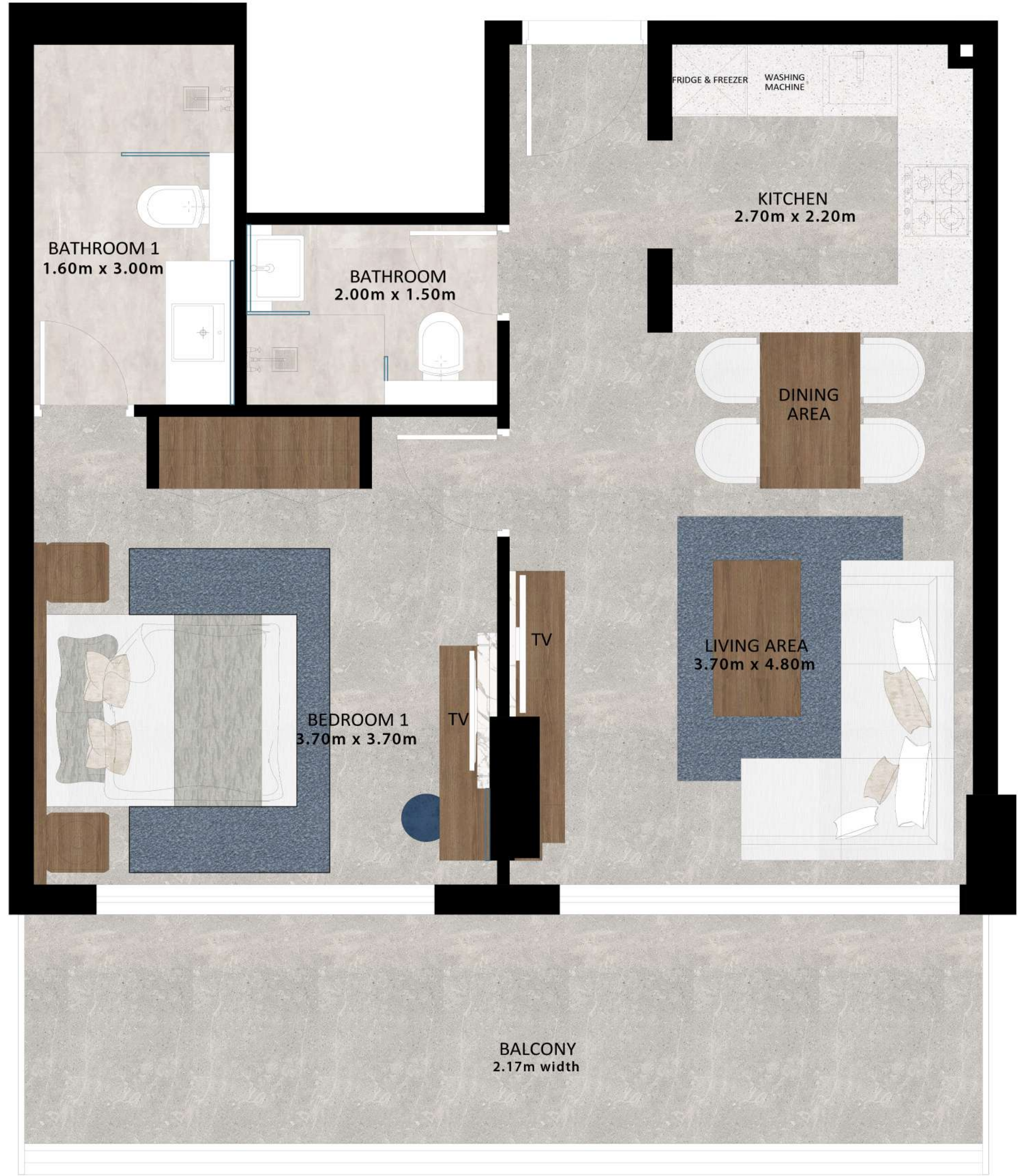
109.32 SQ.M



1. All dimensions are in imperial and metric, and measured from finish to finish excluding construction tolerances.
2. All materials, dimensions, and drawings are approximate only.
3. Information is subject to change without notice, at developer's absolute discretion.
4. Actual area may vary from the stated area.
5. Drawings not to scale.
6. All images used are for illustrative purposes only and do not represent the actual size, features, specifications, fittings, and furnishings.
7. The developer reserves the right to make revisions / alterations, at it's absolute discretion, without any liability whatsoever.







UNIT -07

# ONE BEDROOM

## SUITE AREA

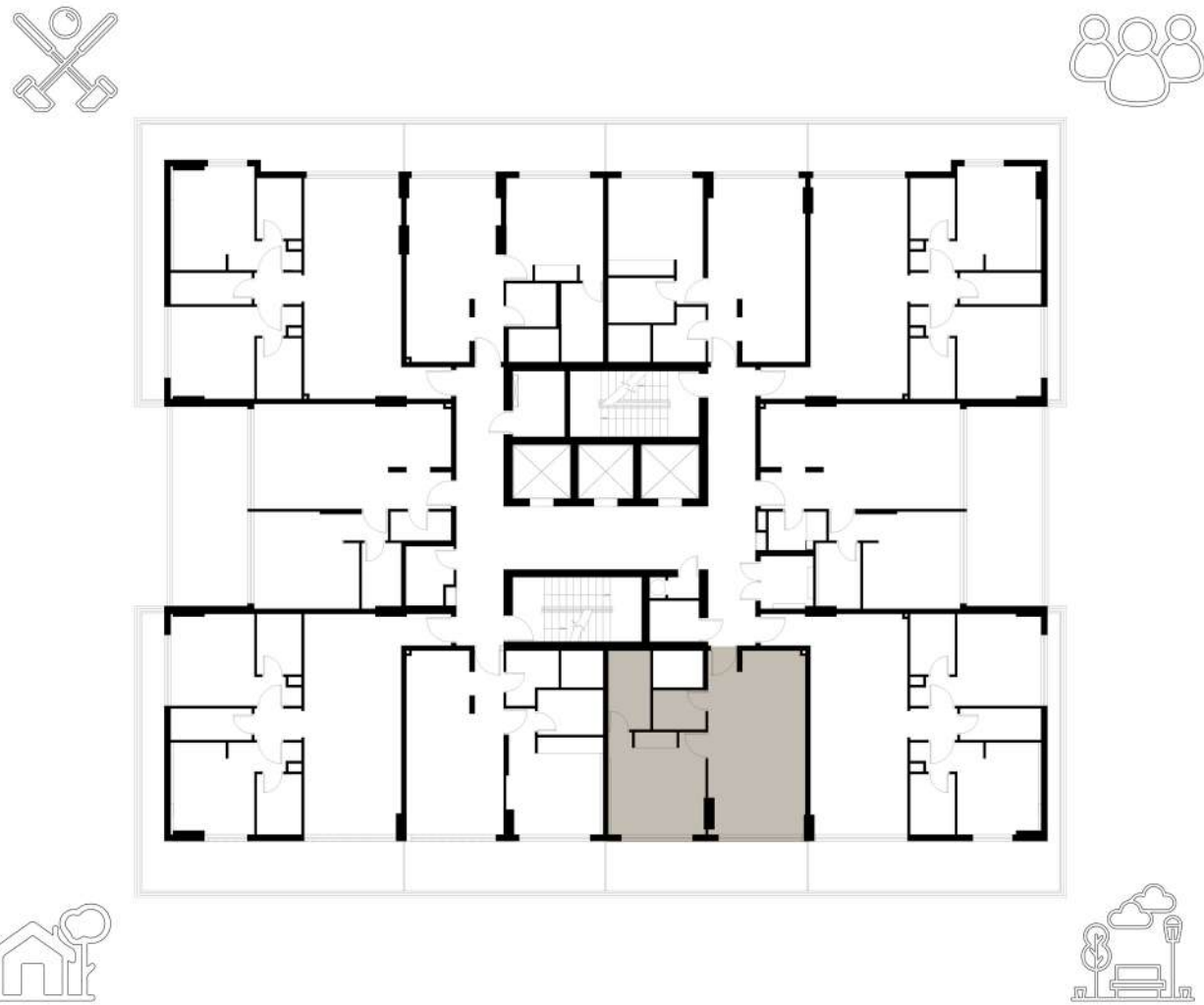
565.32 SQ.FT      52.52 SQ.M

## BALCONY AREA

186.97 SQ.FT      17.37 SQ.M

## TOTAL AREA

752.29 SQ.FT      69.89 SQ.M



1. All dimensions are in imperial and metric, and measured from finish to finish excluding construction tolerances. 2. All materials, dimensions, and drawings are approximate only. 3. Information is subject to change without notice, at developer's absolute discretion. 4. Actual area may vary from the stated area. 5. Drawings not to scale. 6. All images used are for illustrative purposes only and do not represent the actual size, features, specifications, fittings, and furnishings. 7. The developer reserves the right to make revisions / alterations, at it's absolute discretion, without any liability whatsoever.







UNIT -08

# ONE BEDROOM

## SUITE AREA

570.70 SQ.FT

53.02 SQ.M

## BALCONY AREA

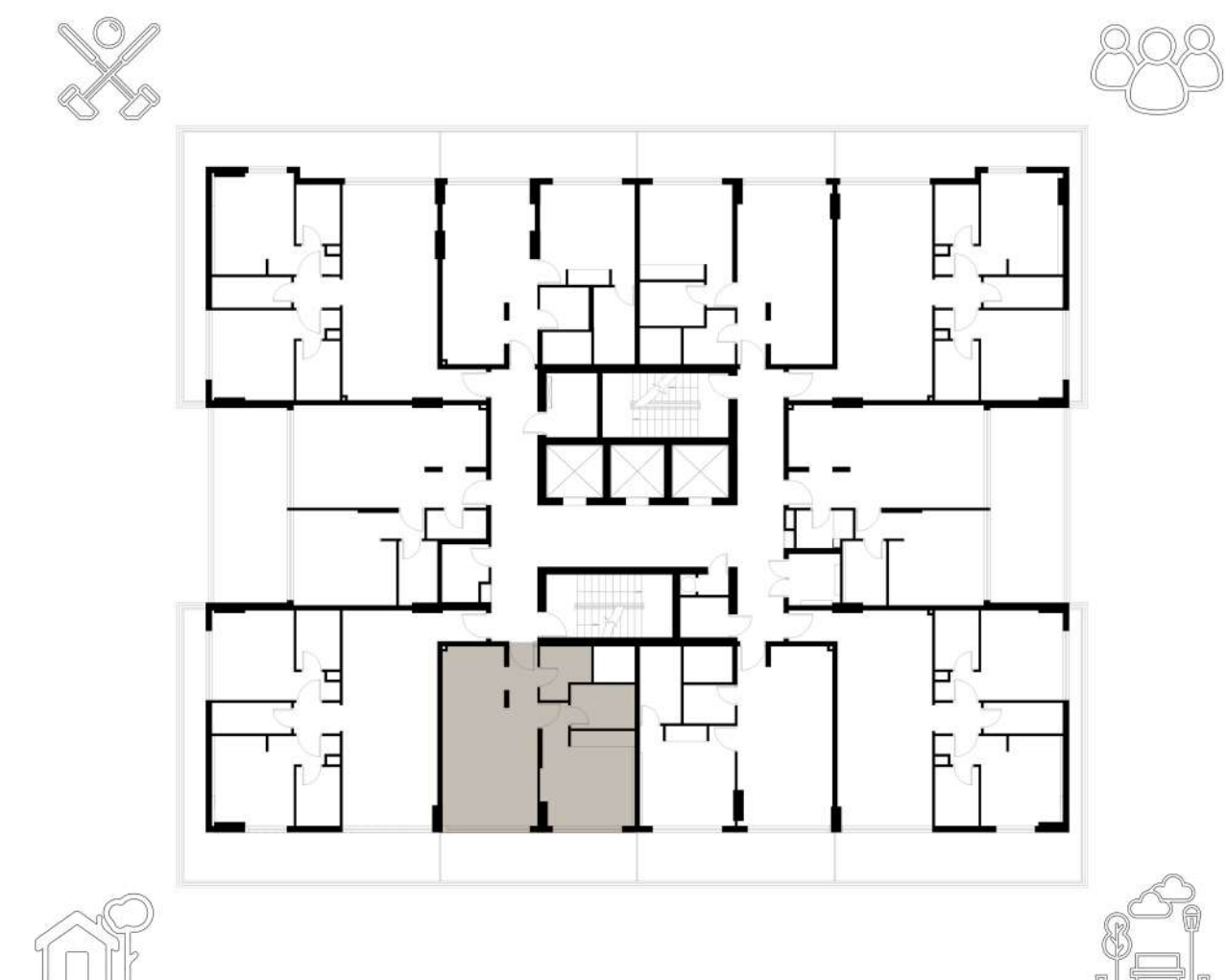
186.97 SQ.FT

17.37 SQ.M

## TOTAL AREA

757.67 SQ.FT

70.39 SQ.M



1. All dimensions are in imperial and metric, and measured from finish to finish excluding construction tolerances.
2. All materials, dimensions, and drawings are approximate only.
3. Information is subject to change without notice, at developer's absolute discretion.
4. Actual area may vary from the stated area.
5. Drawings not to scale.
6. All images used are for illustrative purposes only and do not represent the actual size, features, specifications, fittings, and furnishings.
7. The developer reserves the right to make revisions / alterations, at it's absolute discretion, without any liability whatsoever.





## TWO BEDROOM

## SUITE AREA

863.91 SQ.FT

80.26 SQ.M

## BALCONY AREA

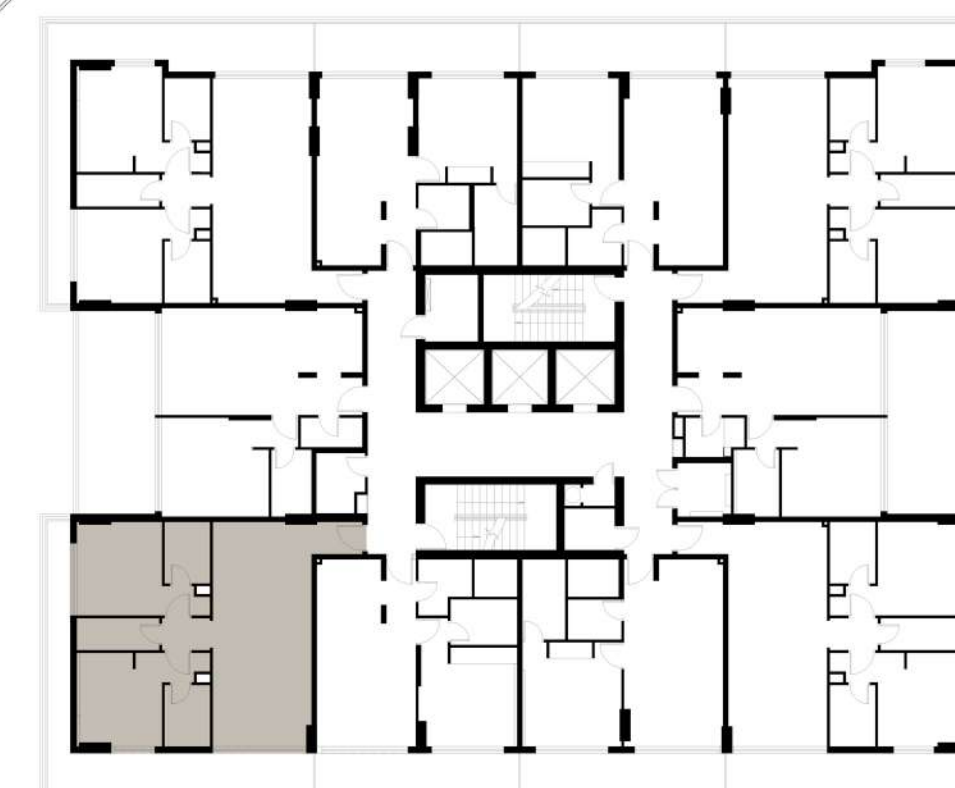
362.96 SQ.FT

33.72 SQ.M

## TOTAL AREA

1226.88 SQ.FT

113.98 SQ.M



1. All dimensions are in imperial and metric, and measured from finish to finish excluding construction tolerances.
2. All materials, dimensions, and drawings are approximate only.
3. Information is subject to change without notice, at developer's absolute discretion.
4. Actual area may vary from the stated area.
5. Drawings not to scale.
6. All images used are for illustrative purposes only and do not represent the actual size, features, specifications, fittings, and furnishings.
7. The developer reserves the right to make revisions / alterations, at it's absolute discretion, without any liability whatsoever.





# ONE BEDROOM



## SUITE AREA

608.16 SQ.FT

56.50 SQ.M

## BALCONY AREA

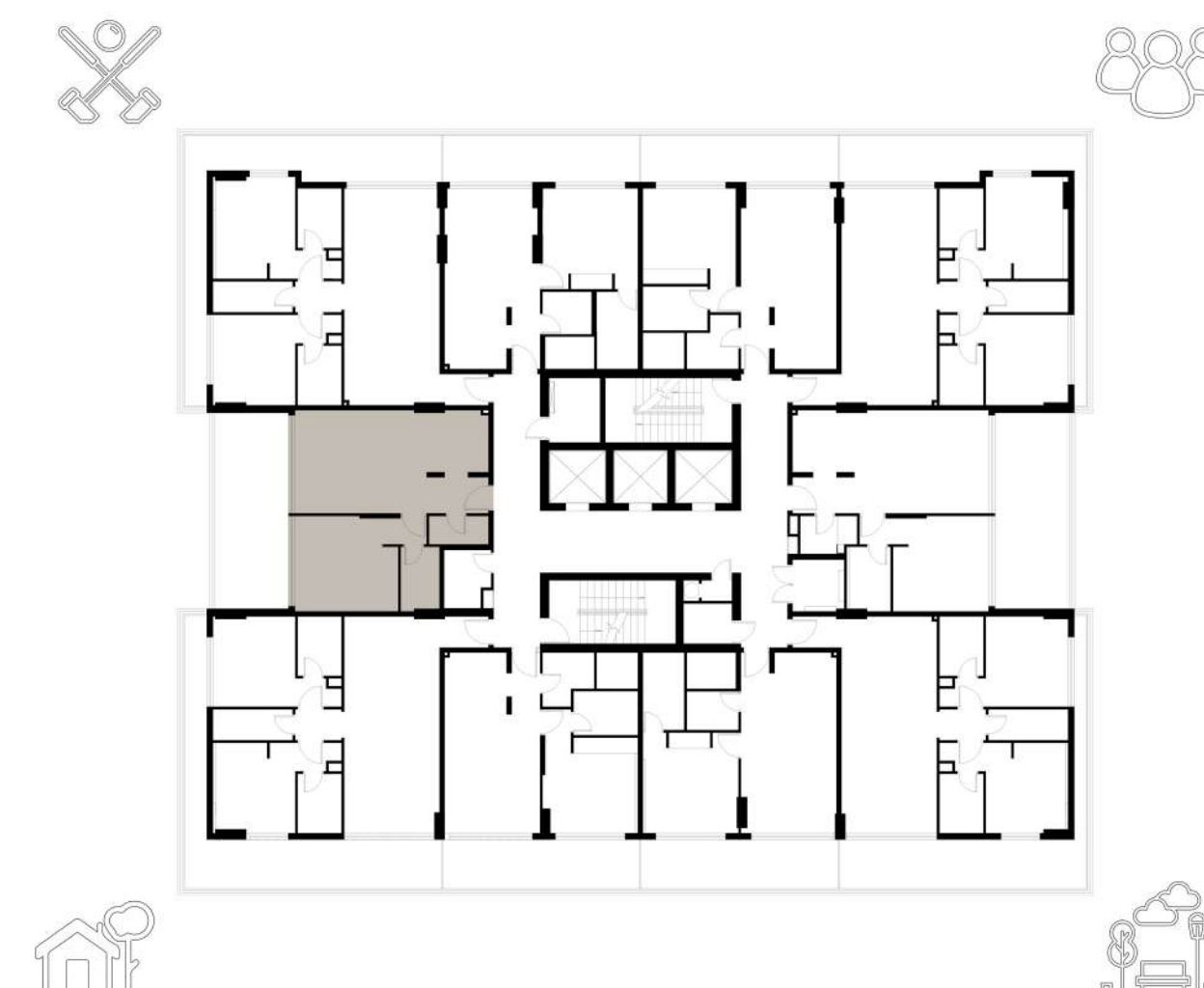
266.94 SQ.FT

24.80 SQ.M

## TOTAL AREA

875.11 SQ.FT

81.30 SQ.M



1. All dimensions are in imperial and metric, and measured from finish to finish excluding construction tolerances.
2. All materials, dimensions, and drawings are approximate only.
3. Information is subject to change without notice, at developer's absolute discretion.
4. Actual area may vary from the stated area.
5. Drawings not to scale.
6. All images used are for illustrative purposes only and do not represent the actual size, features, specifications, fittings, and furnishings.
7. The developer reserves the right to make revisions / alterations, at it's absolute discretion, without any liability whatsoever.





# DECA



+971 56 86 86 786



info@deca-properties.com



[www.aarkdevelopers.com](http://www.aarkdevelopers.com)



[www.deca-properties.com](http://www.deca-properties.com)



SALES OFFICE :

**DECA**

Grey Square, Showroom 3, Umm Suqeim Road,  
Al Barsha 2 - Dubai