

SEASCAPE

RASHID YACHTS & MARINA

BUILDING 2

FLOOR PLAN

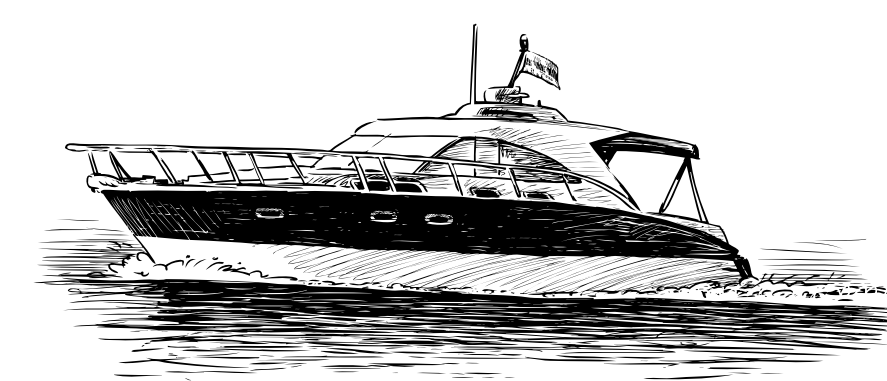
EMAAR

SEASCAPE

RASHID YACHTS & MARINA



THE CANAL POOL



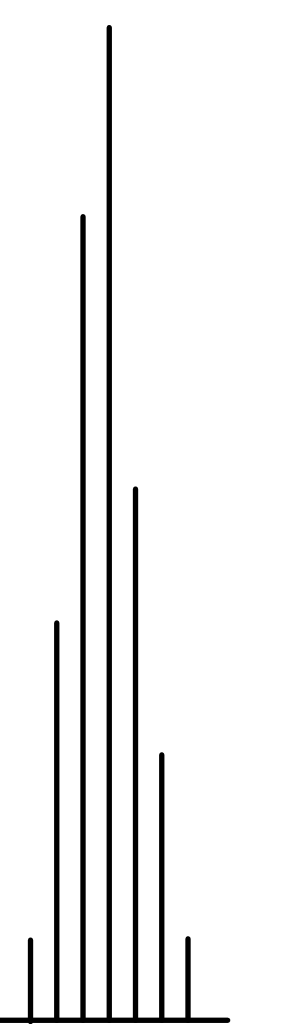
MARINA & PROMENADE

BUILDING 1
G + 18 FLOORS

BUILDING 2
G + 7 FLOORS

BUILDING 3
G + 8 FLOORS

BUILDING 4
G + 6 FLOORS



BURJ KHALIFA

N ←

FLOOR PLAN 1. All dimensions are in imperial and metric, and measured from finish to finish excluding construction tolerances. 2. All materials, dimensions, and drawings are approximate only. 3. Information is subject to change without notice, at developer's absolute discretion. 4. Actual area may vary from the stated area. 5. Drawings not to scale. 6. All images used are for illustrative purposes only and do not represent the actual size, features, specifications, fittings, and furnishings. 7. The developer reserves the right to make revisions / alterations, at it's absolute discretion, without any liability whatsoever.

EMAAR

SEASCAPE

RASHID YACHTS & MARINA

BUILDING 2

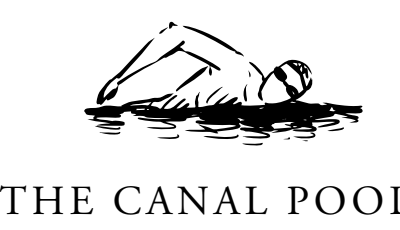
1 BEDROOM TYPE 2E

LEVEL 07

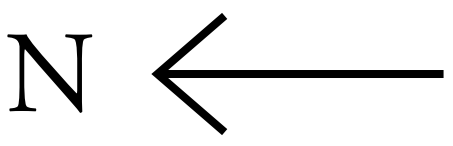
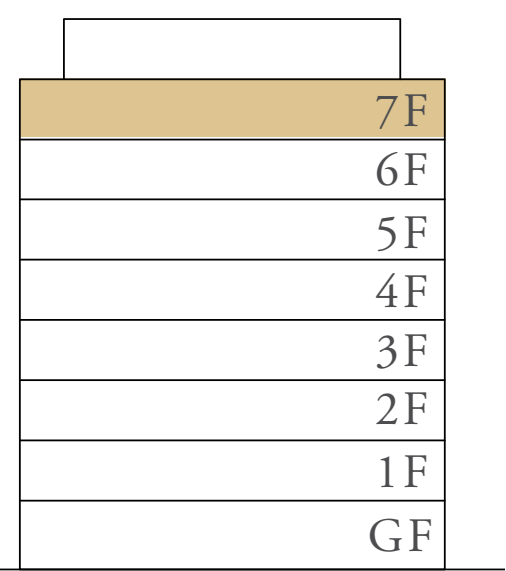
UNIT 01

SUITE AREA	706.43 SQ.FT.	65.63 SQ.M.
BALCONY AREA	119.26 SQ.FT.	11.08 SQ.M.
TOTAL AREA	825.70 SQ.FT.	76.71 SQ.M.

KEY PLAN



KEY SECTION



FLOOR PLAN 1. All dimensions are in imperial and metric, and measured from finish to finish excluding construction tolerances. 2. All materials, dimensions, and drawings are approximate only. 3. Information is subject to change without notice, at developer's absolute discretion. 4. Actual area may vary from the stated area. 5. Drawings not to scale. 6. All images used are for illustrative purposes only and do not represent the actual size, features, specifications, fittings, and furnishings. 7. The developer reserves the right to make revisions / alterations, at it's absolute discretion, without any liability whatsoever.

SEASCAPE

RASHID YACHTS & MARINA

BUILDING 2

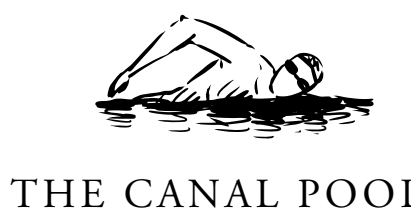
1 BEDROOM TYPE 2G

LEVEL 01 - 06

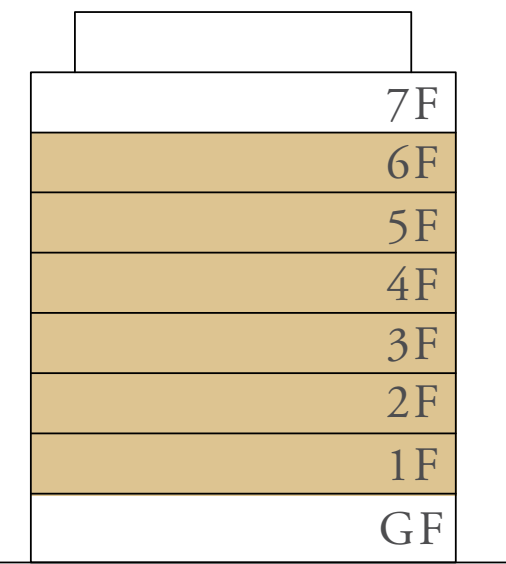
UNIT 01

SUITE AREA	706.43 SQ.FT.	65.63 SQ.M.
BALCONY AREA	144.56 SQ.FT.	13.43 SQ.M.
TOTAL AREA	850.99 SQ.FT.	79.06 SQ.M.

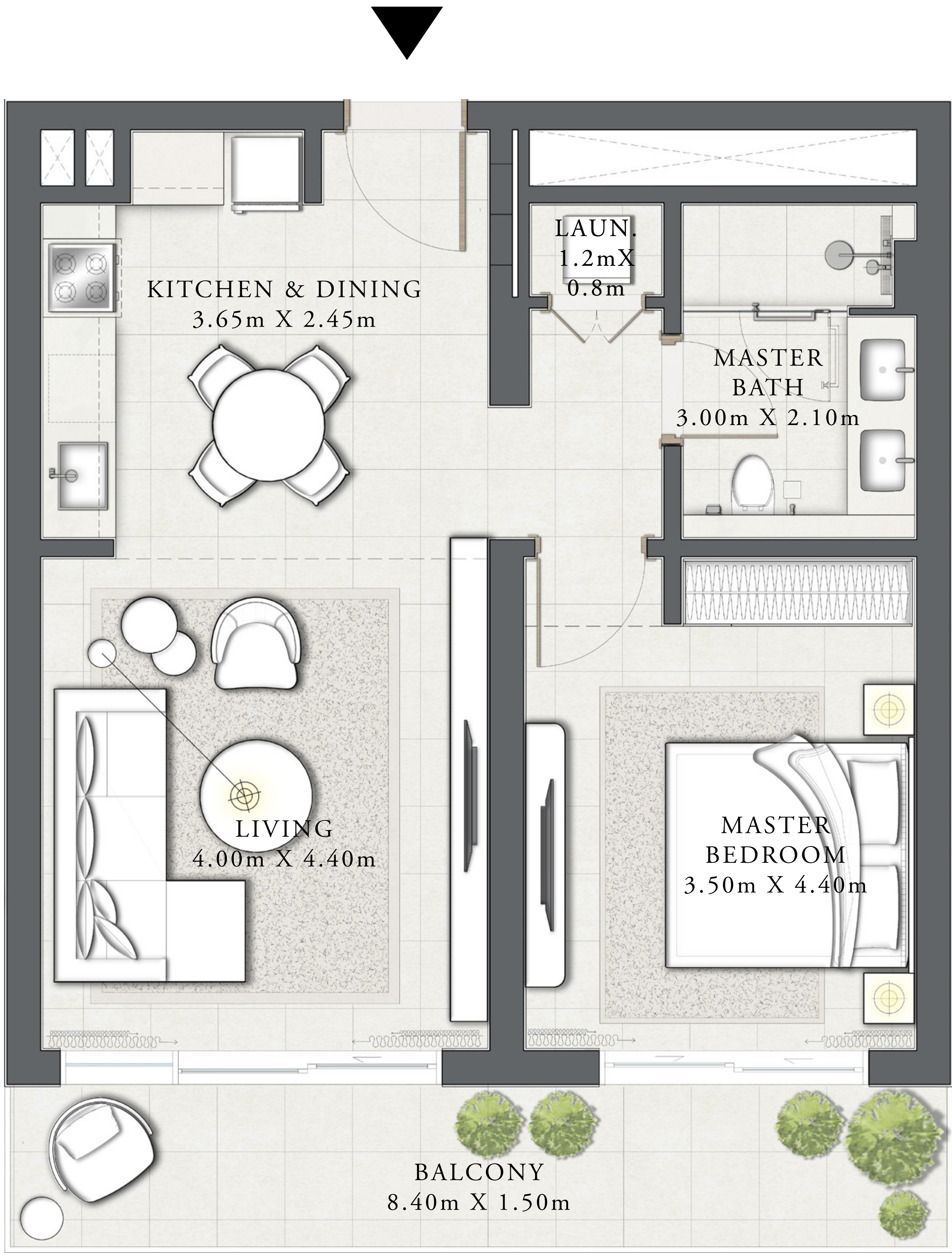
KEY PLAN



KEY SECTION



N ←



FLOOR PLAN 1. All dimensions are in imperial and metric, and measured from finish to finish excluding construction tolerances. 2. All materials, dimensions, and drawings are approximate only. 3. Information is subject to change without notice, at developer's absolute discretion. 4. Actual area may vary from the stated area. 5. Drawings not to scale. 6. All images used are for illustrative purposes only and do not represent the actual size, features, specifications, fittings, and furnishings. 7. The developer reserves the right to make revisions / alterations, at it's absolute discretion, without any liability whatsoever.

SEASCAPE

RASHID YACHTS & MARINA

BUILDING 2

2 BEDROOM TYPE 1A

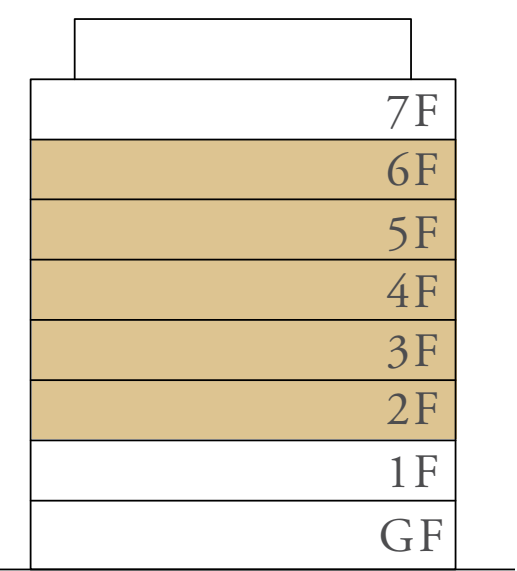
LEVEL 02 - 06 UNIT 02 & 06

SUITE AREA	1,163.90 SQ.FT.	108.13 SQ.M.
BALCONY AREA	226.36 SQ.FT.	21.03 SQ.M.
TOTAL AREA	1,390.27 SQ.FT.	129.16 SQ.M.

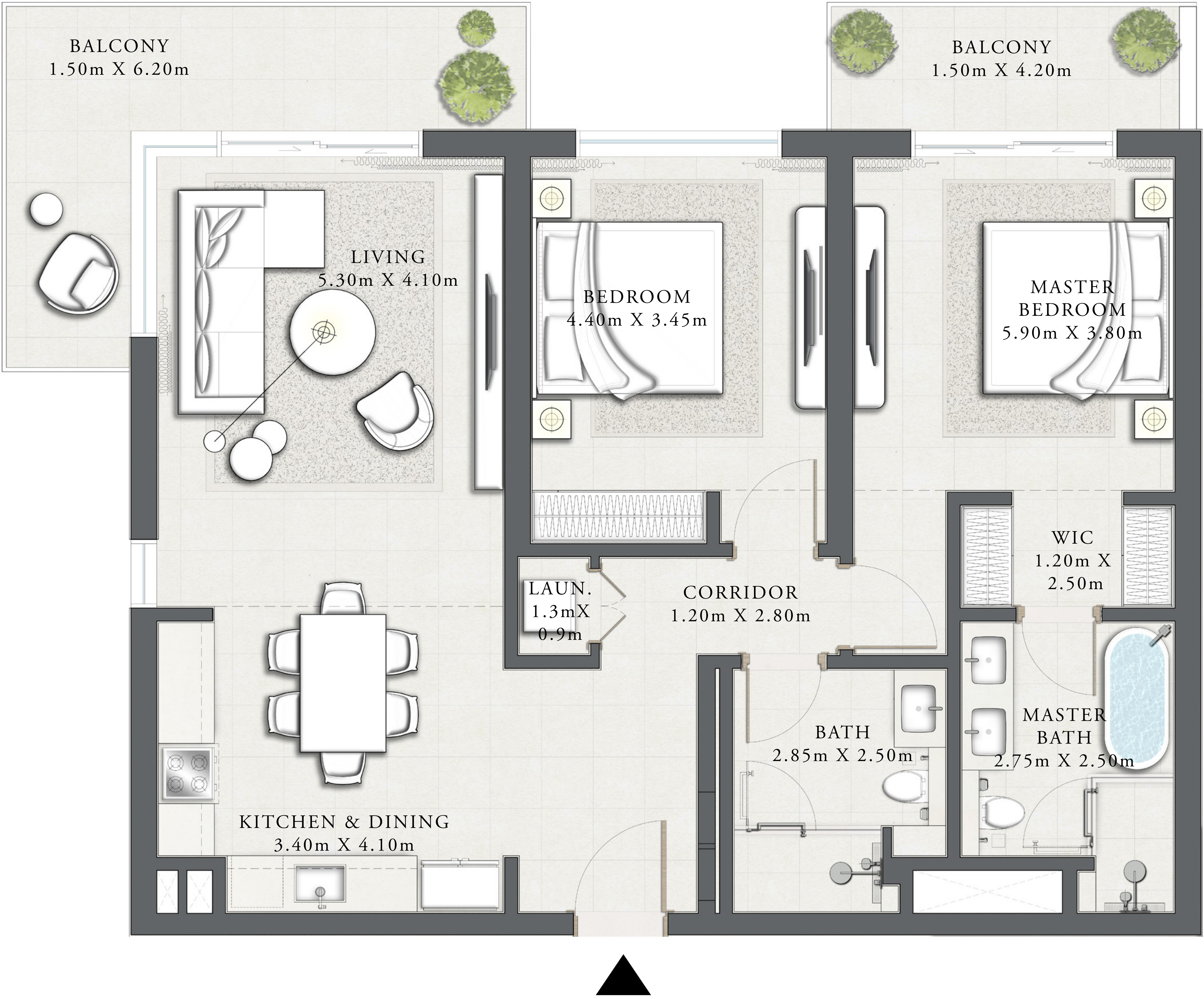
KEY PLAN



KEY SECTION



N ←



FLOOR PLAN 1. All dimensions are in imperial and metric, and measured from finish to finish excluding construction tolerances. 2. All materials, dimensions, and drawings are approximate only. 3. Information is subject to change without notice, at developer's absolute discretion. 4. Actual area may vary from the stated area. 5. Drawings not to scale. 6. All images used are for illustrative purposes only and do not represent the actual size, features, specifications, fittings, and furnishings. 7. The developer reserves the right to make revisions / alterations, at it's absolute discretion, without any liability whatsoever.

SEASCAPE

RASHID YACHTS & MARINA

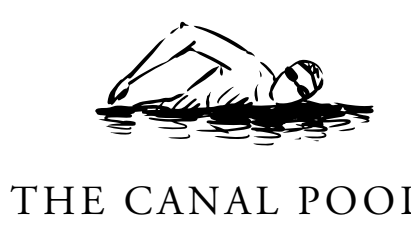
BUILDING 2

2 BEDROOM TYPE 1B

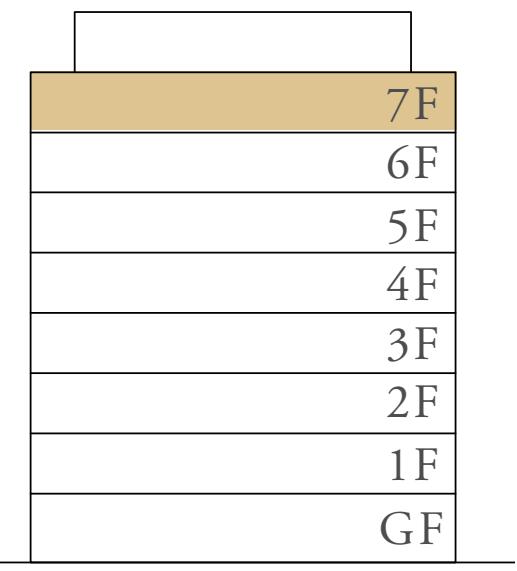
LEVEL 07 UNIT 02 & 06

SUITE AREA	1,163.90 SQ.FT.	108.13 SQ.M.
BALCONY AREA	305.59 SQ.FT.	28.39 SQ.M.
TOTAL AREA	1,469.49 SQ.FT.	136.52 SQ.M.

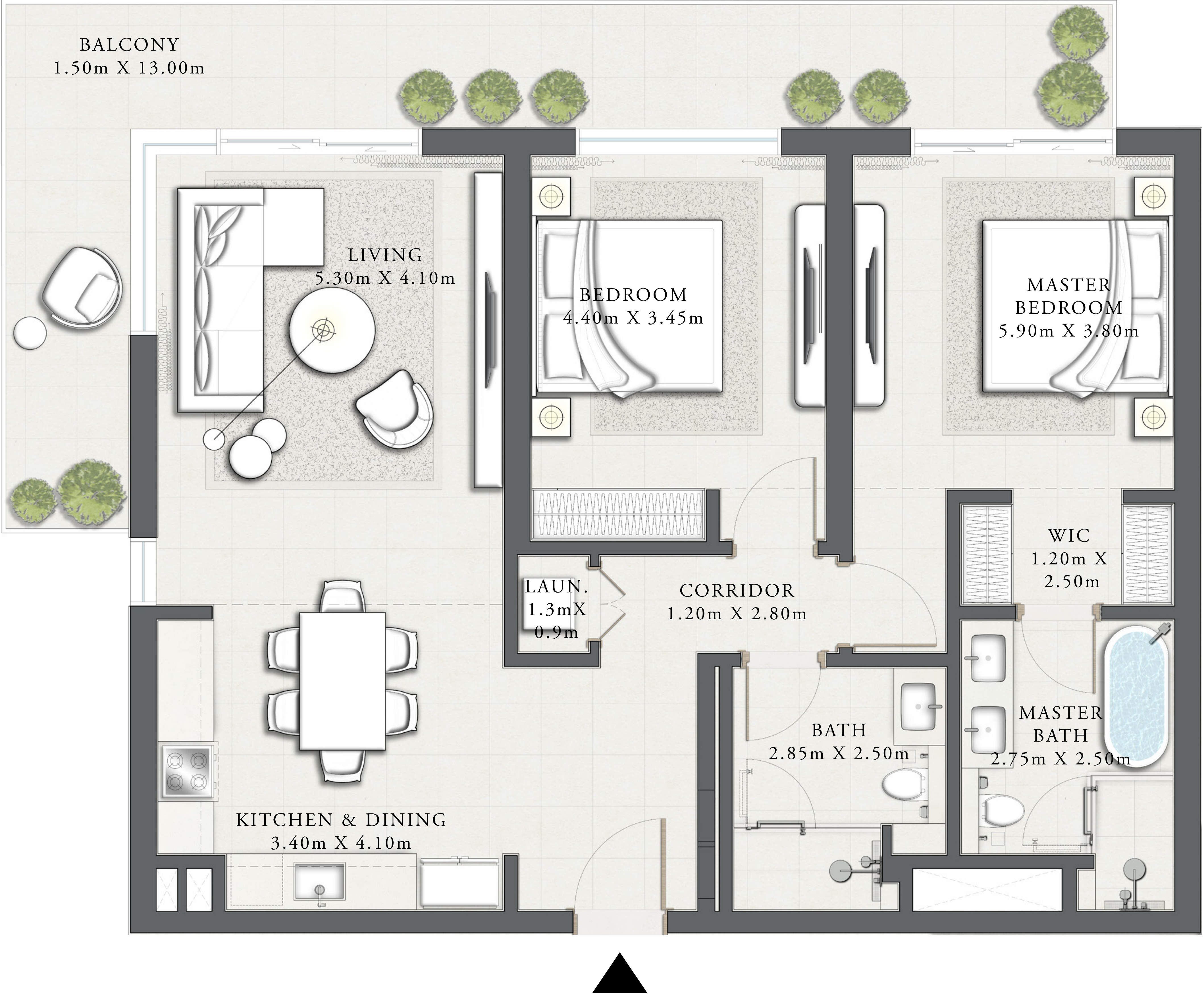
KEY PLAN



KEY SECTION



N ←



FLOOR PLAN 1. All dimensions are in imperial and metric, and measured from finish to finish excluding construction tolerances. 2. All materials, dimensions, and drawings are approximate only. 3. Information is subject to change without notice, at developer's absolute discretion. 4. Actual area may vary from the stated area. 5. Drawings not to scale. 6. All images used are for illustrative purposes only and do not represent the actual size, features, specifications, fittings, and furnishings. 7. The developer reserves the right to make revisions / alterations, at it's absolute discretion, without any liability whatsoever.

SEASCAPE

RASHID YACHTS & MARINA

BUILDING 2

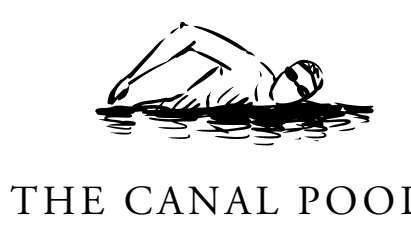
2 BEDROOM TYPE 1C

LEVEL 01

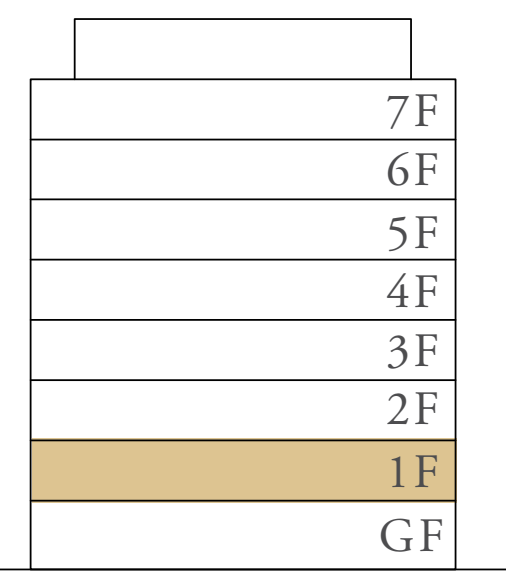
UNIT 02

SUITE AREA	1,164.44 SQ.FT.	108.18 SQ.M.
BALCONY AREA	225.72 SQ.FT.	20.97 SQ.M.
TOTAL AREA	1,390.16 SQ.FT.	129.15 SQ.M.

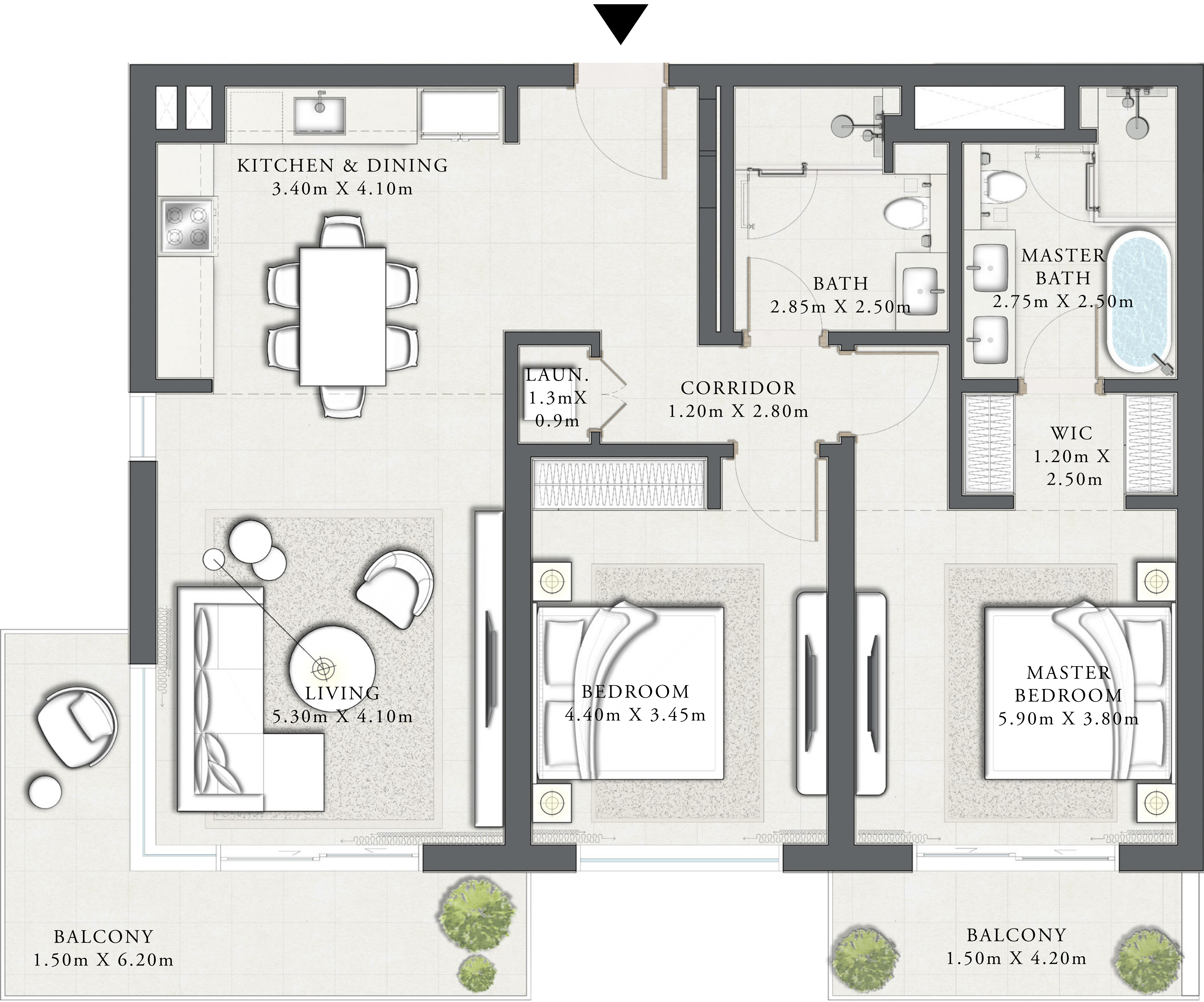
KEY PLAN



KEY SECTION



N ←



FLOOR PLAN 1. All dimensions are in imperial and metric, and measured from finish to finish excluding construction tolerances. 2. All materials, dimensions, and drawings are approximate only. 3. Information is subject to change without notice, at developer's absolute discretion. 4. Actual area may vary from the stated area. 5. Drawings not to scale. 6. All images used are for illustrative purposes only and do not represent the actual size, features, specifications, fittings, and furnishings. 7. The developer reserves the right to make revisions / alterations, at it's absolute discretion, without any liability whatsoever.

SEASCAPE

RASHID YACHTS & MARINA

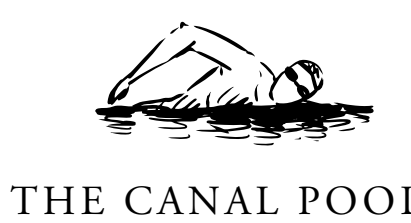
BUILDING 2

2 BEDROOM TYPE 1C

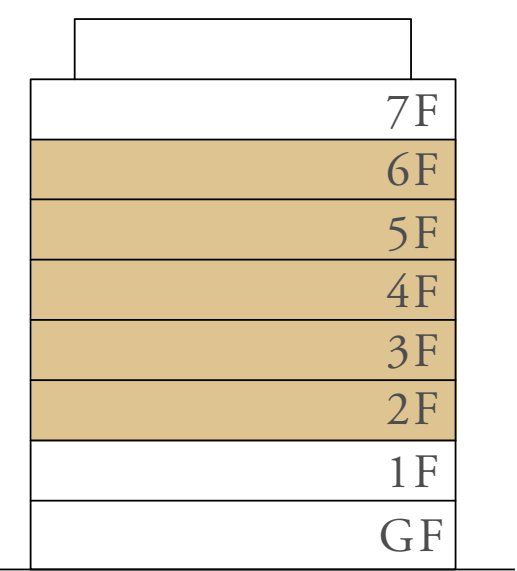
LEVEL 02 - 06 UNIT 03 & 07

SUITE AREA	1,164.44 SQ.FT.	108.18 SQ.M.
BALCONY AREA	225.72 SQ.FT.	20.97 SQ.M.
TOTAL AREA	1,390.16 SQ.FT.	129.15 SQ.M.

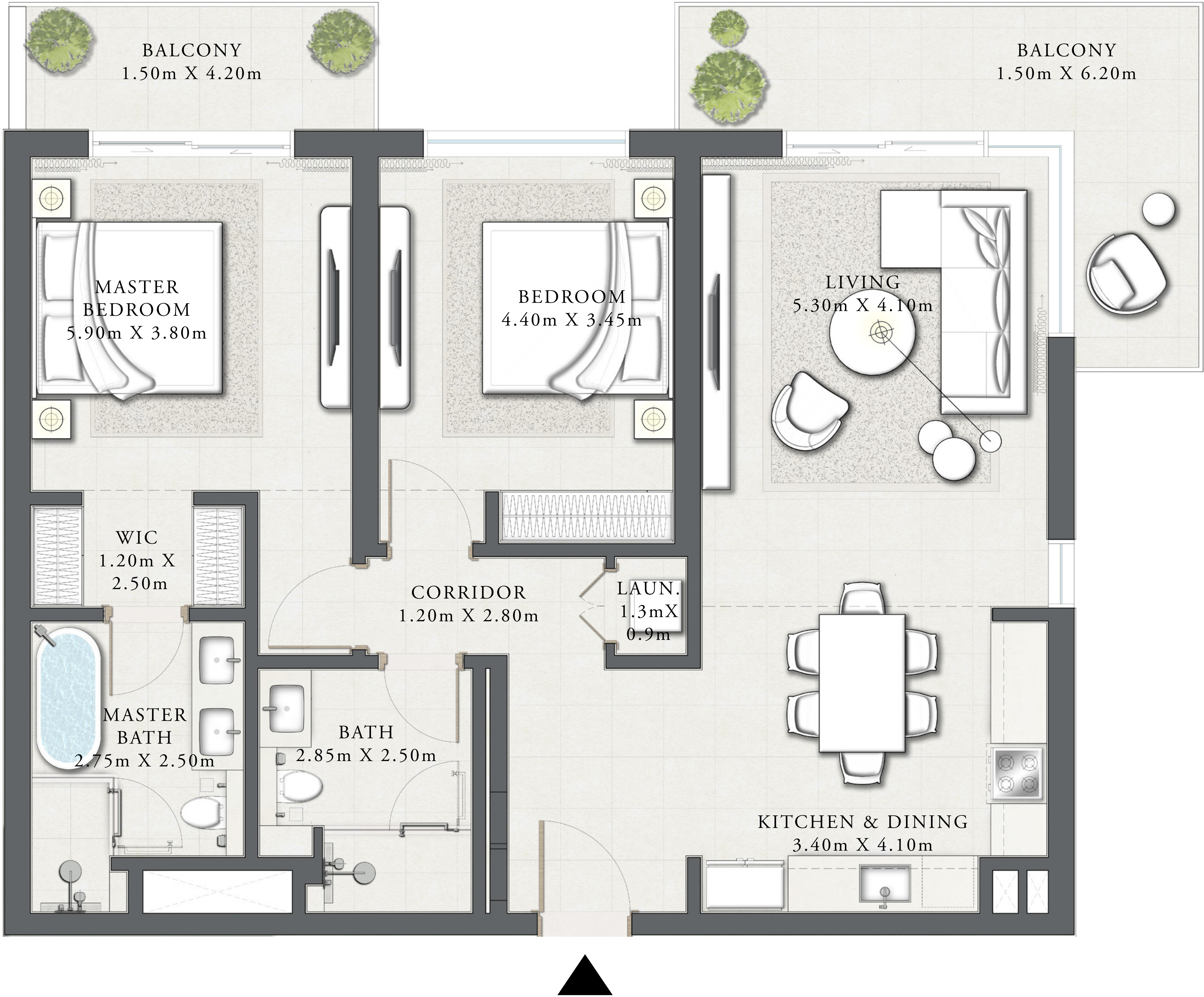
KEY PLAN



KEY SECTION



N ←



MARINA & PROMENADE

FLOOR PLAN 1. All dimensions are in imperial and metric, and measured from finish to finish excluding construction tolerances. 2. All materials, dimensions, and drawings are approximate only. 3. Information is subject to change without notice, at developer's absolute discretion. 4. Actual area may vary from the stated area. 5. Drawings not to scale. 6. All images used are for illustrative purposes only and do not represent the actual size, features, specifications, fittings, and furnishings. 7. The developer reserves the right to make revisions / alterations, at it's absolute discretion, without any liability whatsoever.

SEASCAPE

RASHID YACHTS & MARINA

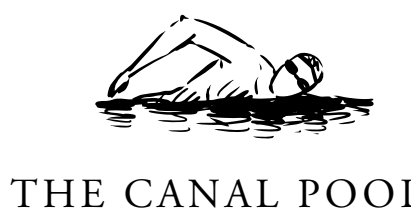
BUILDING 2

2 BEDROOM TYPE 1D

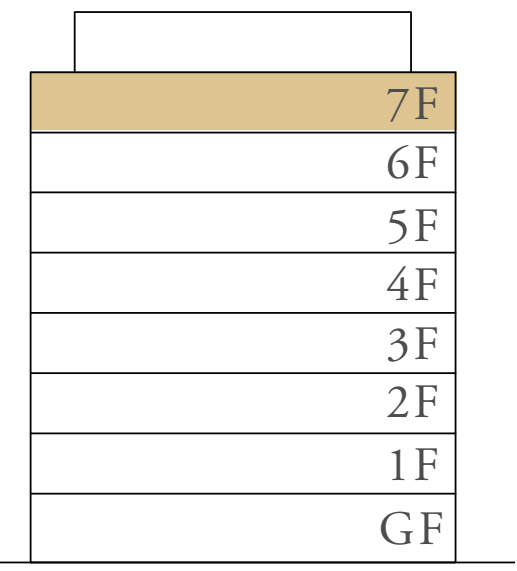
LEVEL 07 UNIT 03 & 07

SUITE AREA	1,164.55 SQ.FT.	108.19 SQ.M.
BALCONY AREA	304.94 SQ.FT.	28.33 SQ.M.
TOTAL AREA	1,469.49 SQ.FT.	136.52 SQ.M.

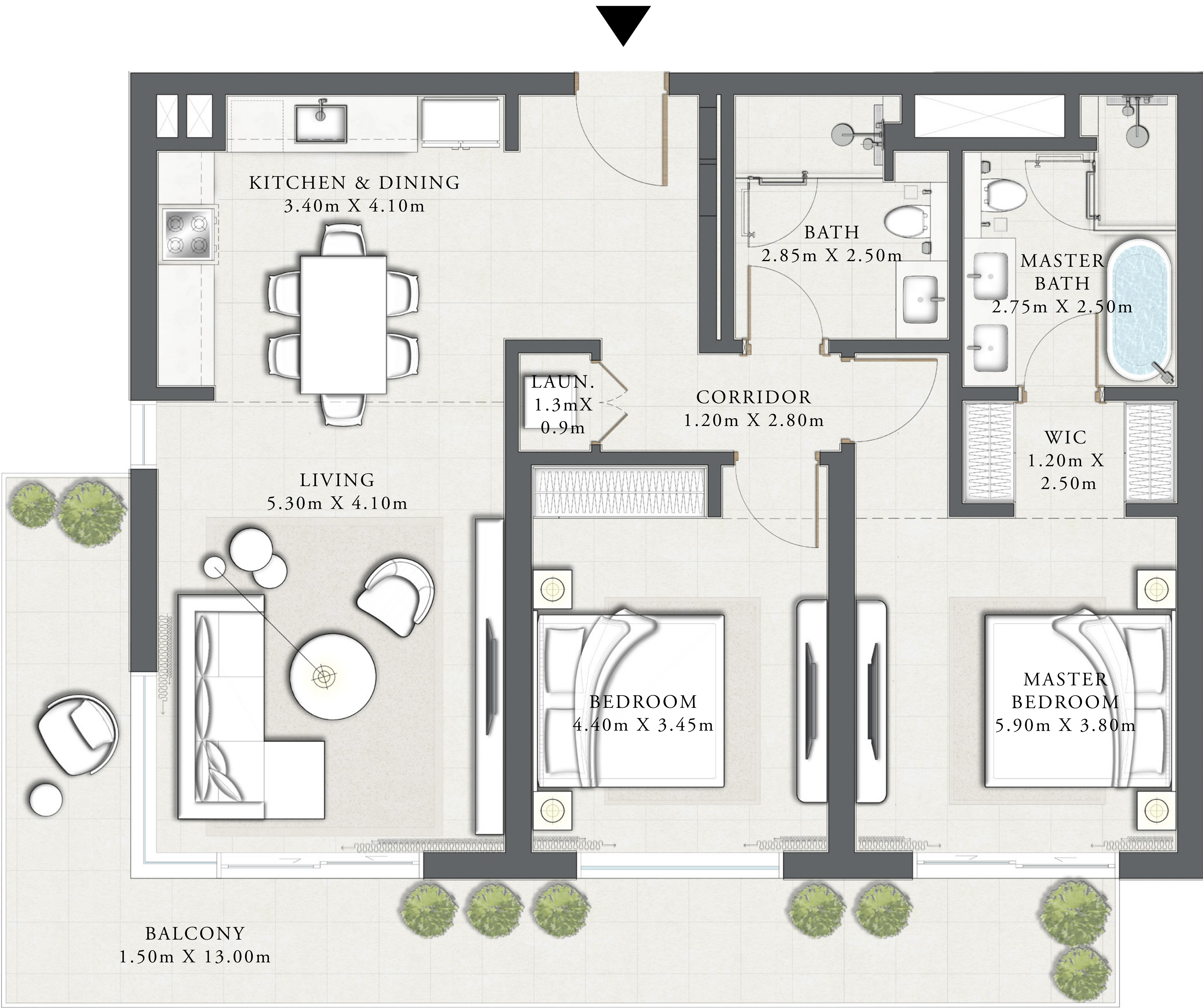
KEY PLAN



KEY SECTION



N ←



FLOOR PLAN 1. All dimensions are in imperial and metric, and measured from finish to finish excluding construction tolerances. 2. All materials, dimensions, and drawings are approximate only. 3. Information is subject to change without notice, at developer's absolute discretion. 4. Actual area may vary from the stated area. 5. Drawings not to scale. 6. All images used are for illustrative purposes only and do not represent the actual size, features, specifications, fittings, and furnishings. 7. The developer reserves the right to make revisions / alterations, at it's absolute discretion, without any liability whatsoever.

SEASCAPE

RASHID YACHTS & MARINA

BUILDING 2

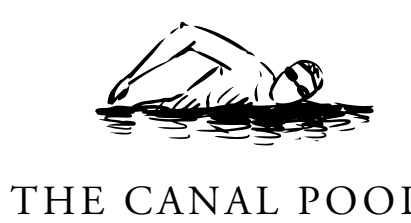
2 BEDROOM TYPE 2A

LEVEL 02 - 06

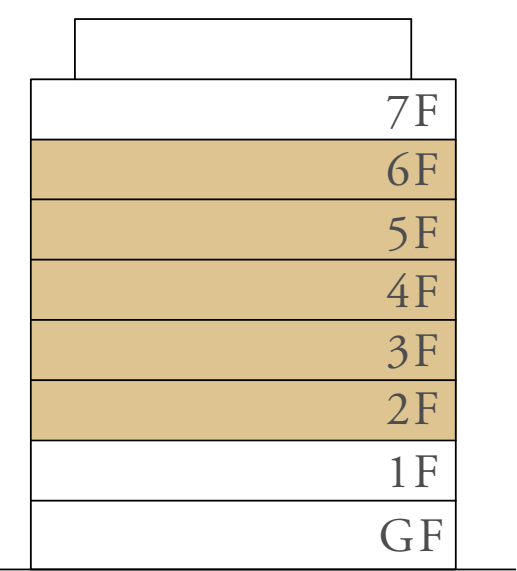
UNIT 05

SUITE AREA	1,163.26 SQ.FT.	108.07 SQ.M.
BALCONY AREA	152.09 SQ.FT.	14.13 SQ.M.
TOTAL AREA	1,315.35 SQ.FT.	122.20 SQ.M.

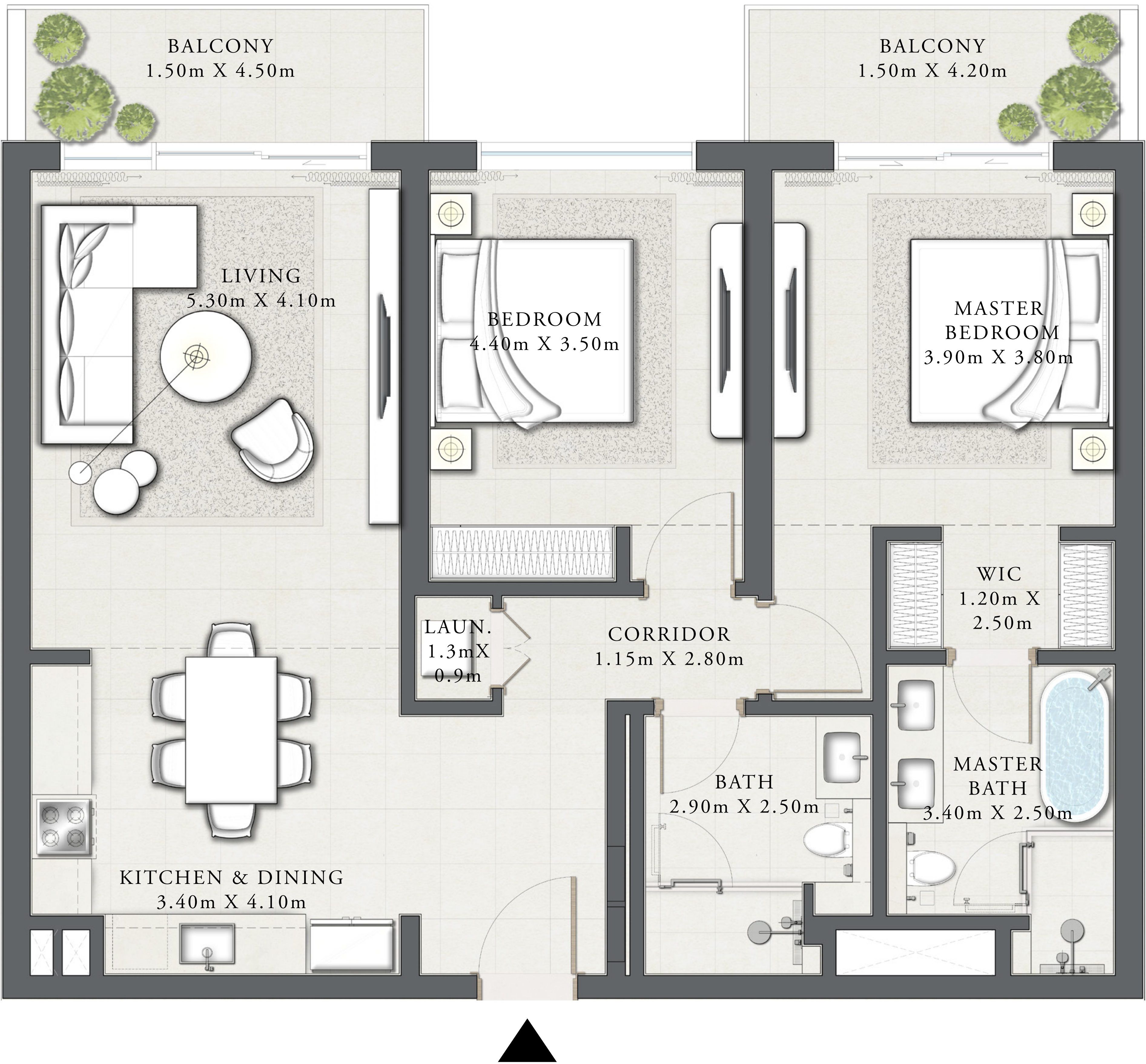
KEY PLAN



KEY SECTION



N ←



FLOOR PLAN 1. All dimensions are in imperial and metric, and measured from finish to finish excluding construction tolerances. 2. All materials, dimensions, and drawings are approximate only. 3. Information is subject to change without notice, at developer's absolute discretion. 4. Actual area may vary from the stated area. 5. Drawings not to scale. 6. All images used are for illustrative purposes only and do not represent the actual size, features, specifications, fittings, and furnishings. 7. The developer reserves the right to make revisions / alterations, at it's absolute discretion, without any liability whatsoever.

SEASCAPE

RASHID YACHTS & MARINA

BUILDING 2

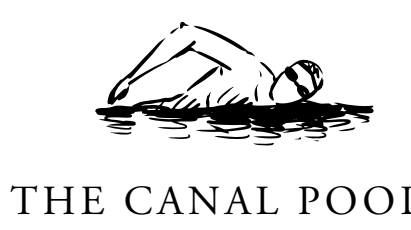
2 BEDROOM TYPE 2D

LEVEL 07

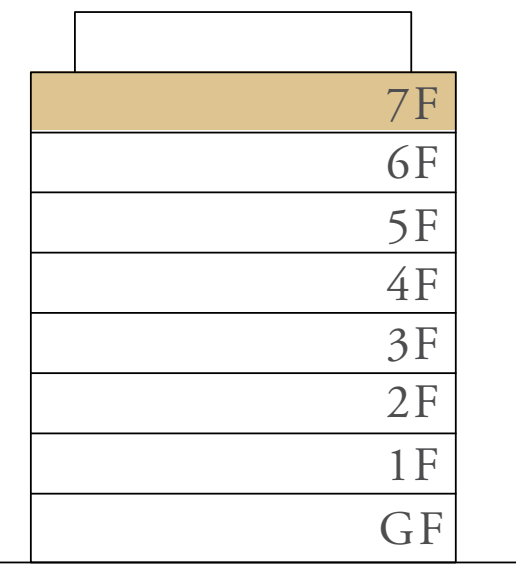
UNIT 05

SUITE AREA	1,163.26 SQ.FT.	108.07 SQ.M.
BALCONY AREA	190.09 SQ.FT.	17.66 SQ.M.
TOTAL AREA	1,353.35 SQ.FT.	125.73 SQ.M.

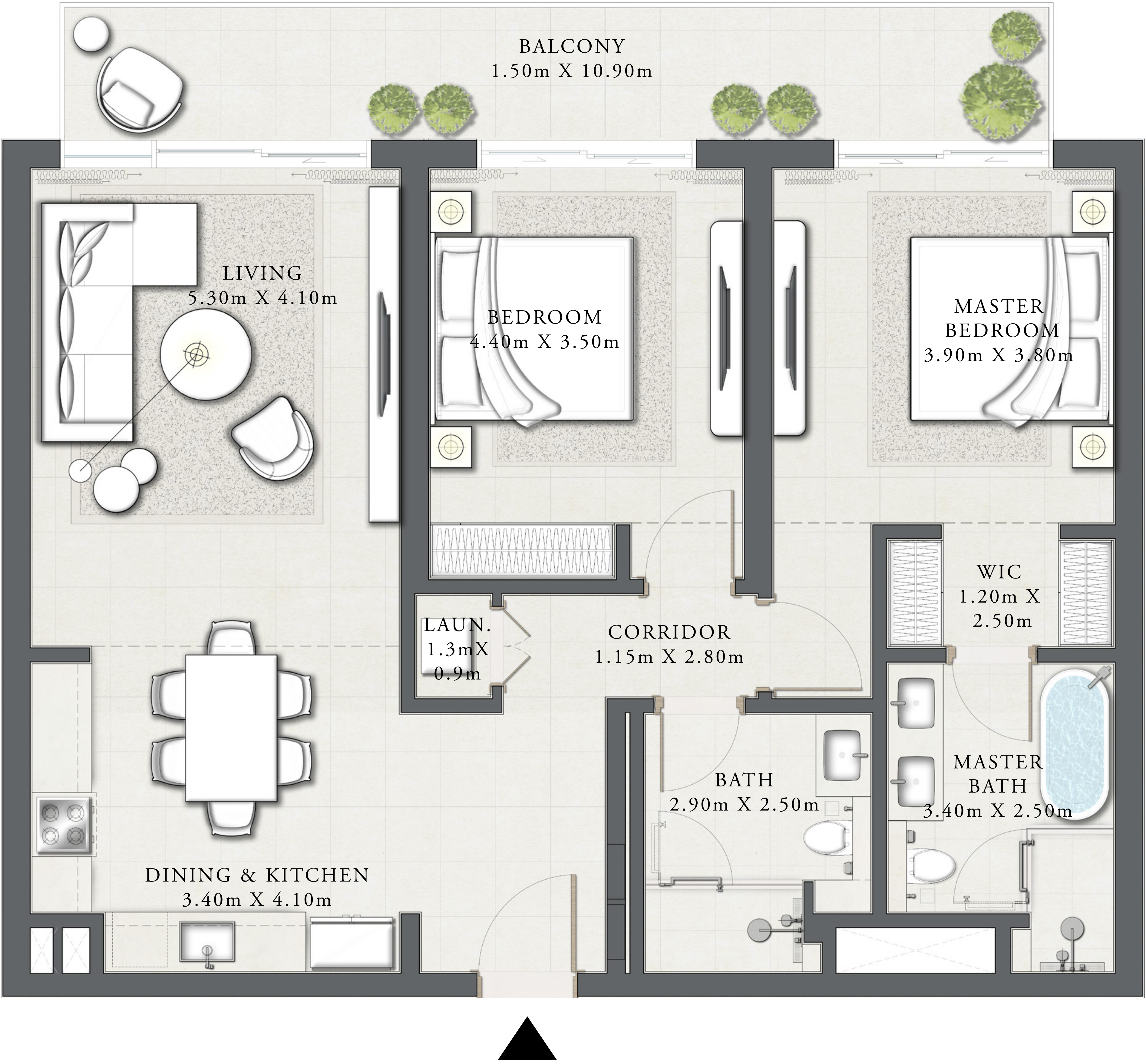
KEY PLAN



KEY SECTION



N ←



FLOOR PLAN 1. All dimensions are in imperial and metric, and measured from finish to finish excluding construction tolerances. 2. All materials, dimensions, and drawings are approximate only. 3. Information is subject to change without notice, at developer's absolute discretion. 4. Actual area may vary from the stated area. 5. Drawings not to scale. 6. All images used are for illustrative purposes only and do not represent the actual size, features, specifications, fittings, and furnishings. 7. The developer reserves the right to make revisions / alterations, at it's absolute discretion, without any liability whatsoever.

SEASCAPE

RASHID YACHTS & MARINA

BUILDING 2

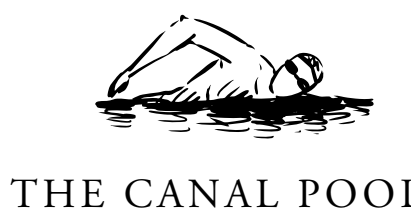
2 BEDROOM TYPE 2F

LEVEL 02 - 06

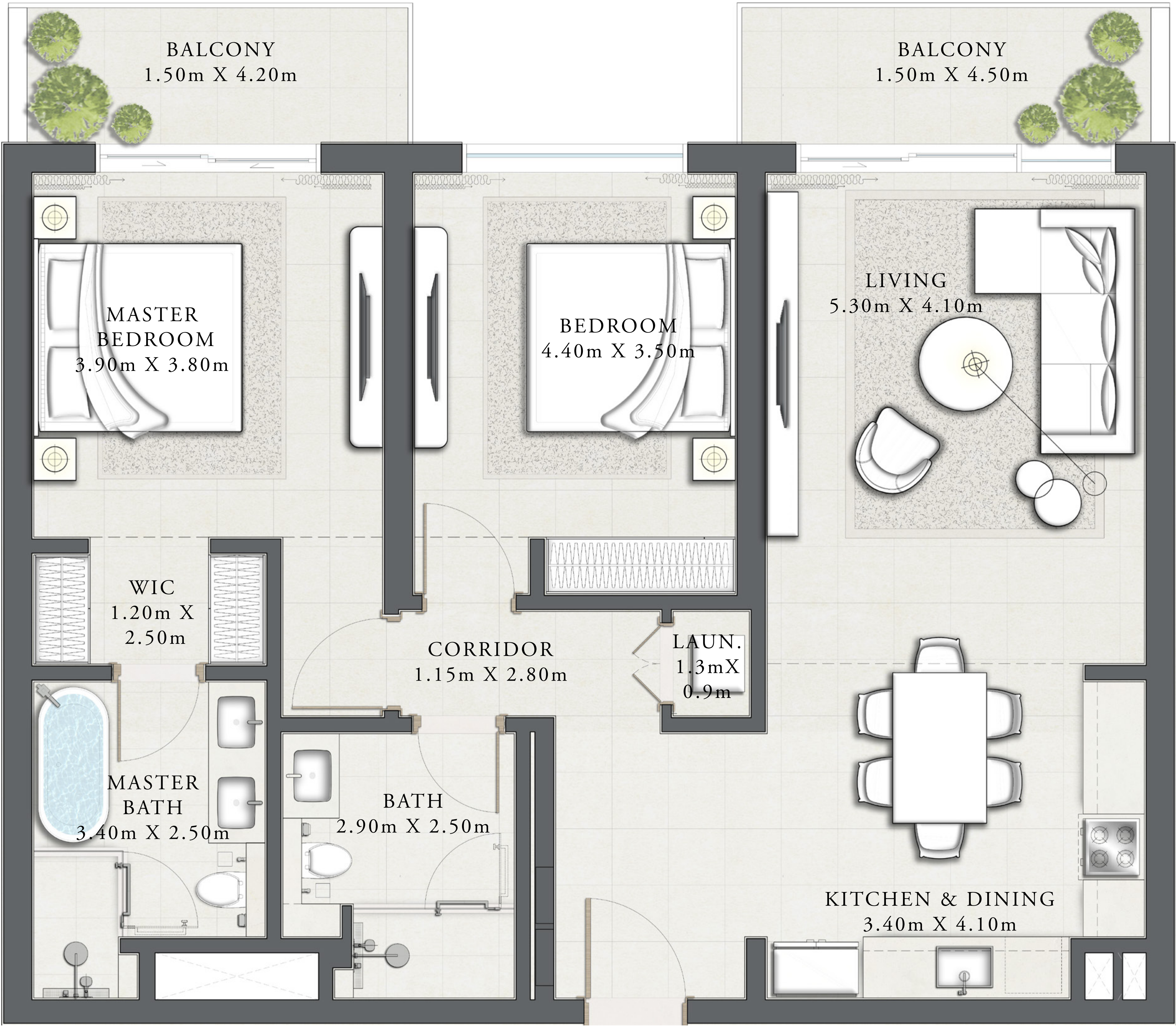
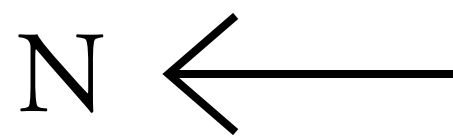
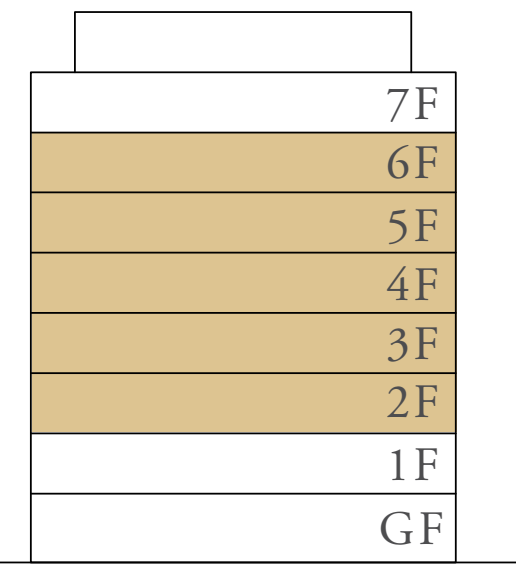
UNIT 04

SUITE AREA	1,163.26 SQ.FT.	108.07 SQ.M.
BALCONY AREA	152.09 SQ.FT.	14.13 SQ.M.
TOTAL AREA	1,315.35 SQ.FT.	122.20 SQ.M.

KEY PLAN



KEY SECTION



FLOOR PLAN 1. All dimensions are in imperial and metric, and measured from finish to finish excluding construction tolerances. 2. All materials, dimensions, and drawings are approximate only. 3. Information is subject to change without notice, at developer's absolute discretion. 4. Actual area may vary from the stated area. 5. Drawings not to scale. 6. All images used are for illustrative purposes only and do not represent the actual size, features, specifications, fittings, and furnishings. 7. The developer reserves the right to make revisions / alterations, at it's absolute discretion, without any liability whatsoever.

SEASCAPE

RASHID YACHTS & MARINA

BUILDING 2

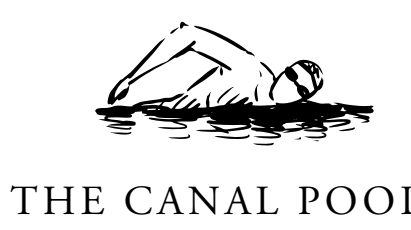
2 BEDROOM TYPE 2H

LEVEL 07

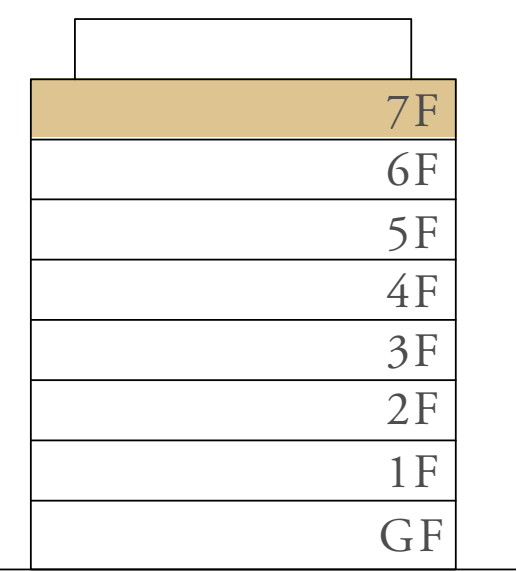
UNIT 04

SUITE AREA	1,163.26 SQ.FT.	108.07 SQ.M.
BALCONY AREA	190.09 SQ.FT.	17.66 SQ.M.
TOTAL AREA	1,353.35 SQ.FT.	125.73 SQ.M.

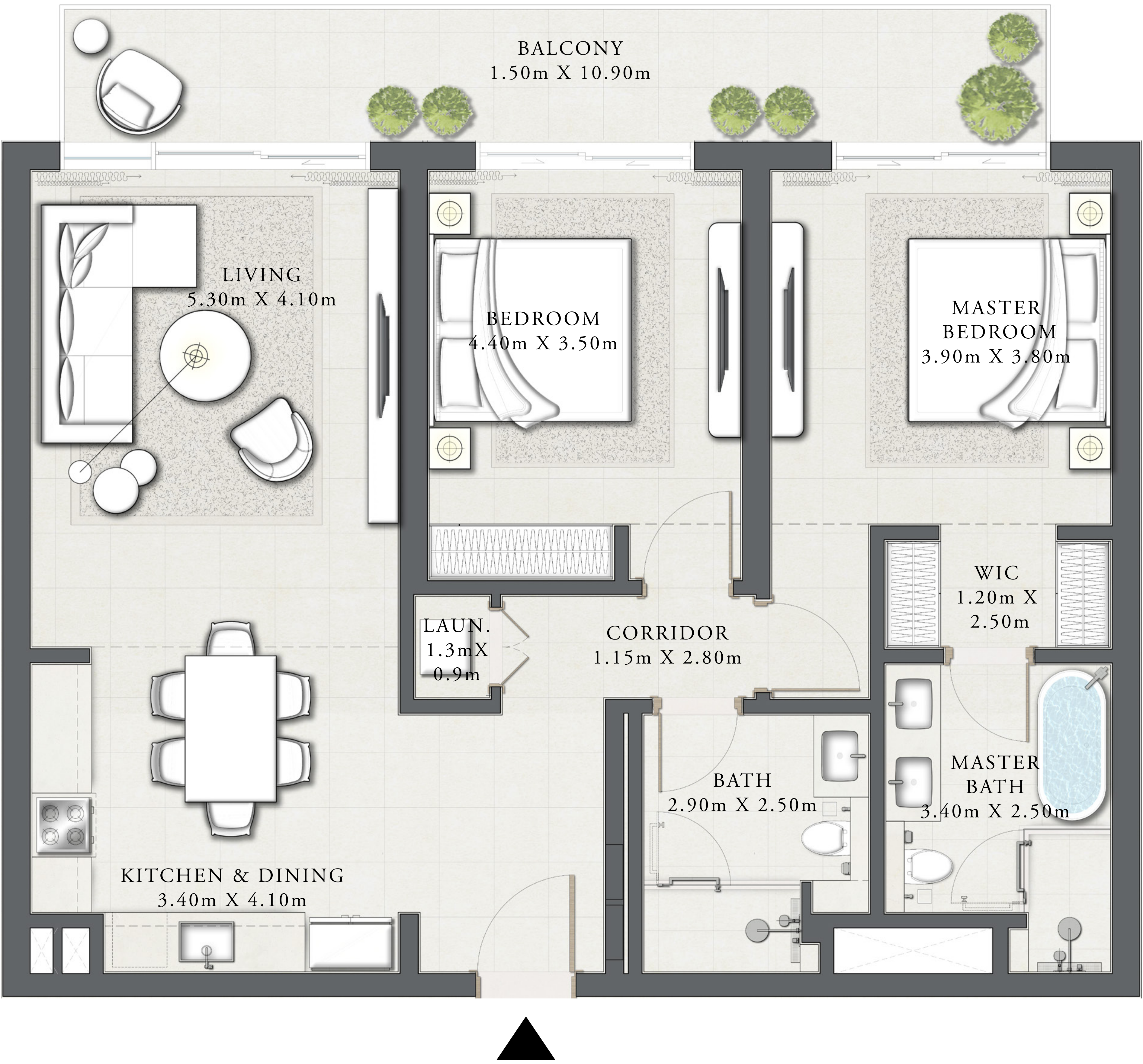
KEY PLAN



KEY SECTION



N ←



FLOOR PLAN 1. All dimensions are in imperial and metric, and measured from finish to finish excluding construction tolerances. 2. All materials, dimensions, and drawings are approximate only. 3. Information is subject to change without notice, at developer's absolute discretion. 4. Actual area may vary from the stated area. 5. Drawings not to scale. 6. All images used are for illustrative purposes only and do not represent the actual size, features, specifications, fittings, and furnishings. 7. The developer reserves the right to make revisions / alterations, at it's absolute discretion, without any liability whatsoever.

SEASCAPE

RASHID YACHTS & MARINA

BUILDING 2

TOWNHOUSE TYPE 1A

LEVEL GF

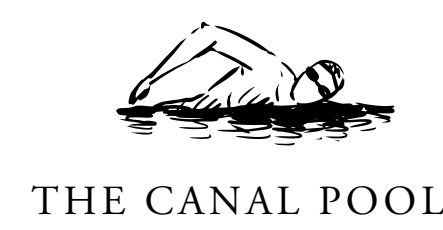
UNIT 01

SUITE AREA	2,317.79 SQ.FT.	215.33 SQ.M.
TERRACE /BALCONY AREA	657.78 SQ.FT.	61.11 SQ.M.
TOTAL AREA	2,975.57 SQ.FT.	276.44 SQ.M.

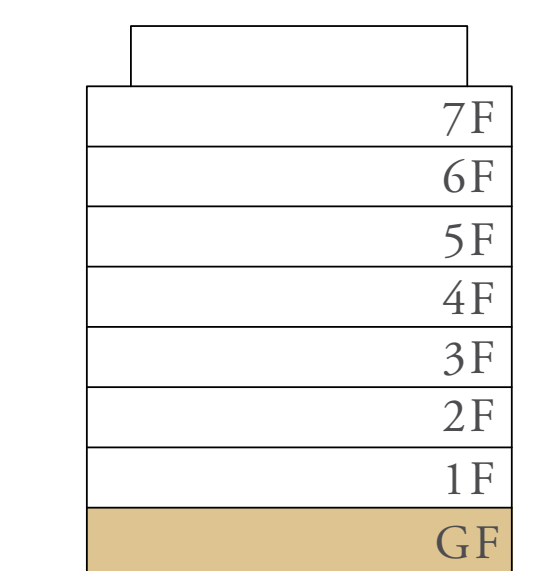
UNIT 05

SUITE AREA	2,318.01 SQ.FT.	215.35 SQ.M.
TERRACE /BALCONY AREA	663.81 SQ.FT.	61.67 SQ.M.
TOTAL AREA	2,981.82 SQ.FT.	277.02 SQ.M.

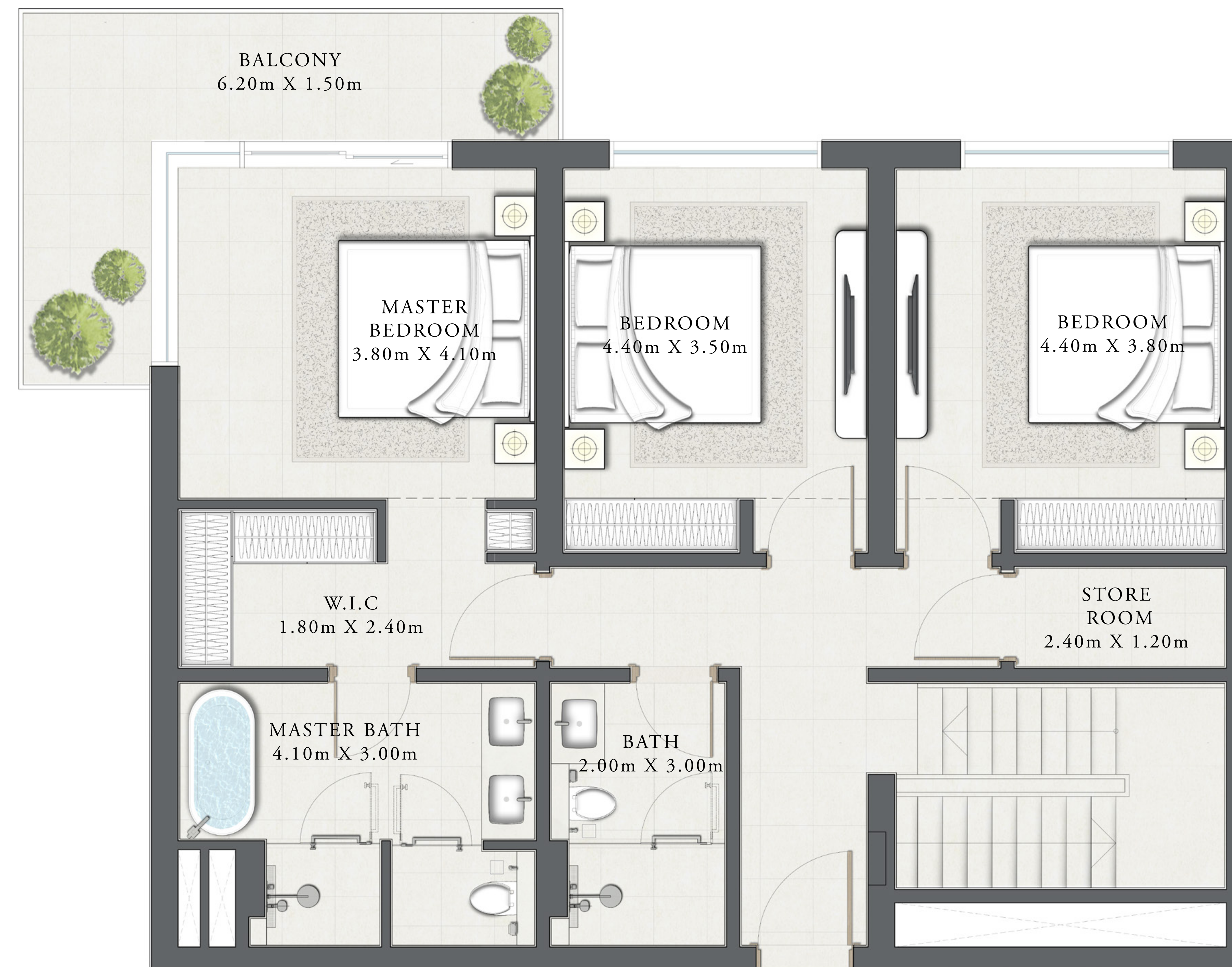
KEY PLAN



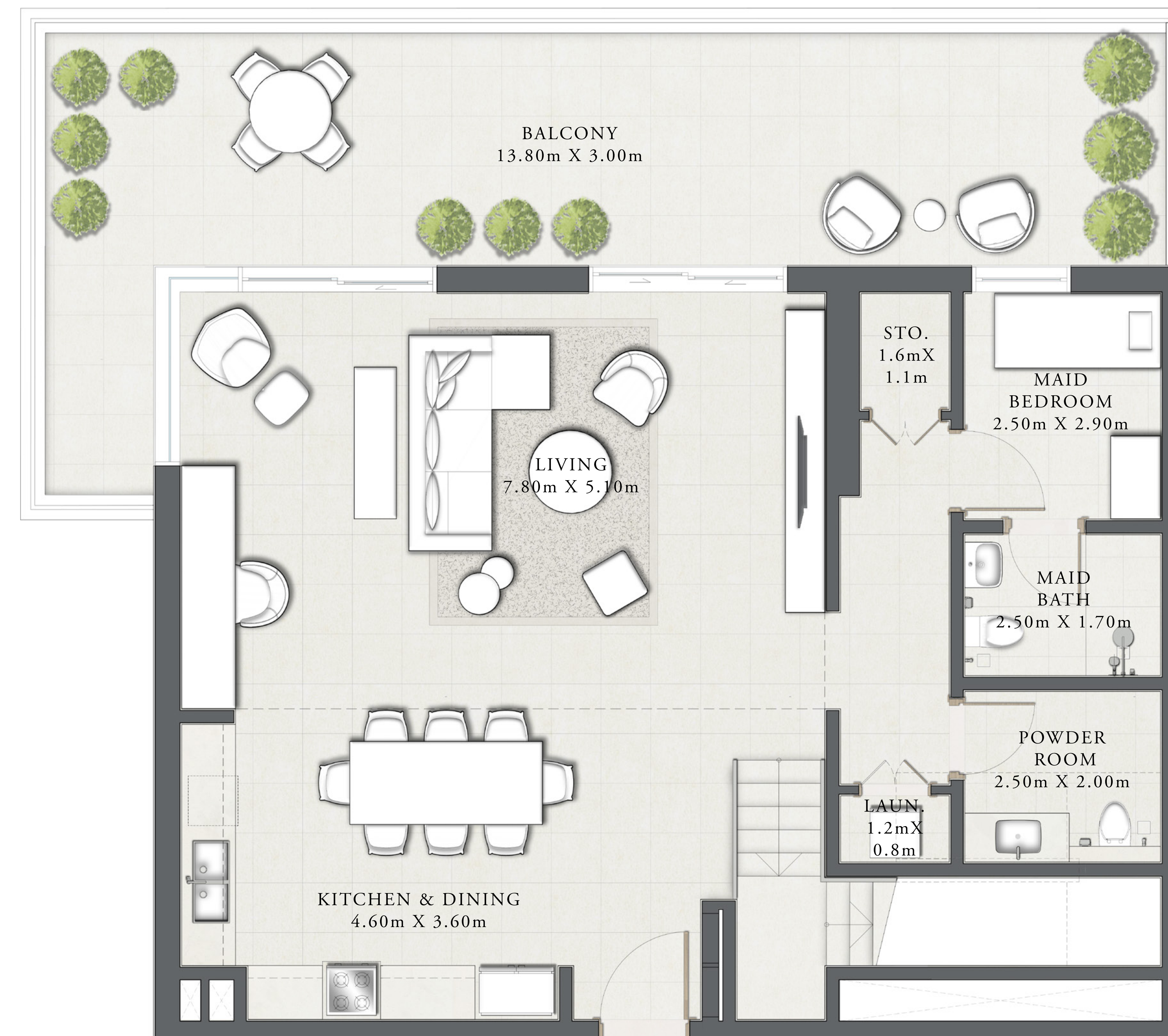
KEY SECTION



N ←



UPPER LEVEL



LOWER LEVEL

FLOOR PLAN 1. All dimensions are in imperial and metric, and measured from finish to finish excluding construction tolerances. 2. All materials, dimensions, and drawings are approximate only. 3. Information is subject to change without notice, at developer's absolute discretion. 4. Actual area may vary from the stated area. 5. Drawings not to scale. 6. All images used are for illustrative purposes only and do not represent the actual size, features, specifications, fittings, and furnishings. 7. The developer reserves the right to make revisions / alterations, at it's absolute discretion, without any liability whatsoever.

EMAAR

SEASCAPE

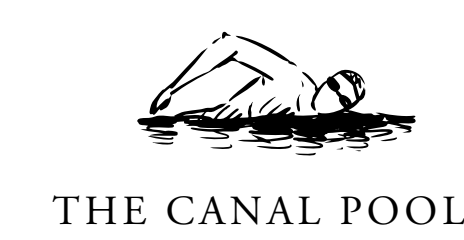
RASHID YACHTS & MARINA

BUILDING 2 TOWNHOUSE TYPE 1B

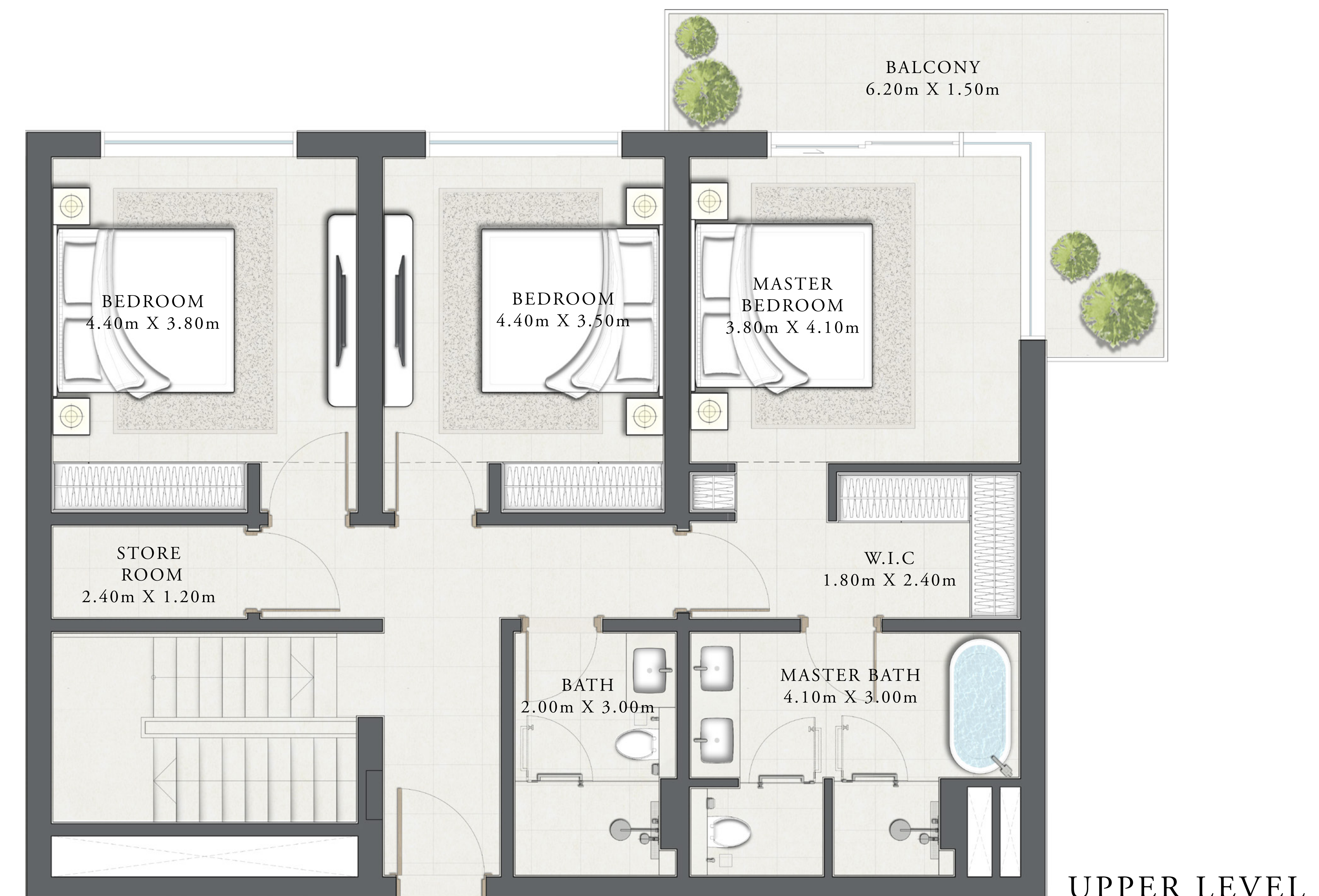
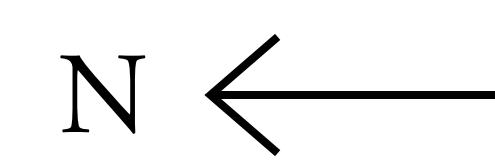
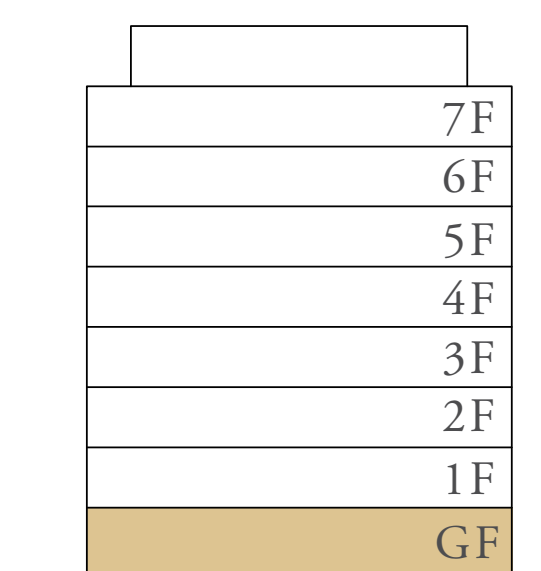
LEVEL GF UNIT 02

SUITE AREA	2,317.68 SQ.FT.	215.32 SQ.M.
TERRACE /BALCONY AREA	622.05 SQ.FT.	57.79 SQ.M.
TOTAL AREA	2,939.73 SQ.FT.	273.11 SQ.M.

KEY PLAN



KEY SECTION



UPPER LEVEL



LOWER LEVEL

FLOOR PLAN 1. All dimensions are in imperial and metric, and measured from finish to finish excluding construction tolerances. 2. All materials, dimensions, and drawings are approximate only. 3. Information is subject to change without notice, at developer's absolute discretion. 4. Actual area may vary from the stated area. 5. Drawings not to scale. 6. All images used are for illustrative purposes only and do not represent the actual size, features, specifications, fittings, and furnishings. 7. The developer reserves the right to make revisions / alterations, at it's absolute discretion, without any liability whatsoever.

SEASCAPE

RASHID YACHTS & MARINA

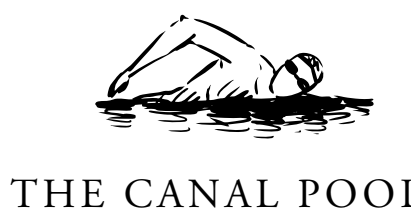
BUILDING 2

TOWNHOUSE TYPE 2B

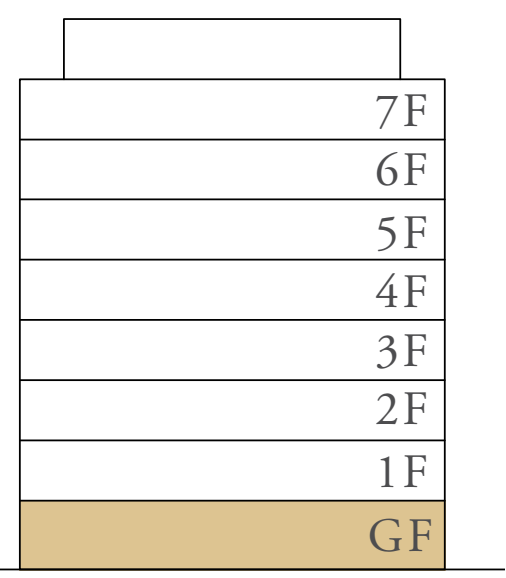
LEVEL GF UNIT 03

SUITE AREA	2,136.96 SQ.FT.	198.53 SQ.M.
TERRACE /BALCONY AREA	561.23 SQ.FT.	52.14 SQ.M.
TOTAL AREA	2,698.19 SQ.FT.	250.67 SQ.M.

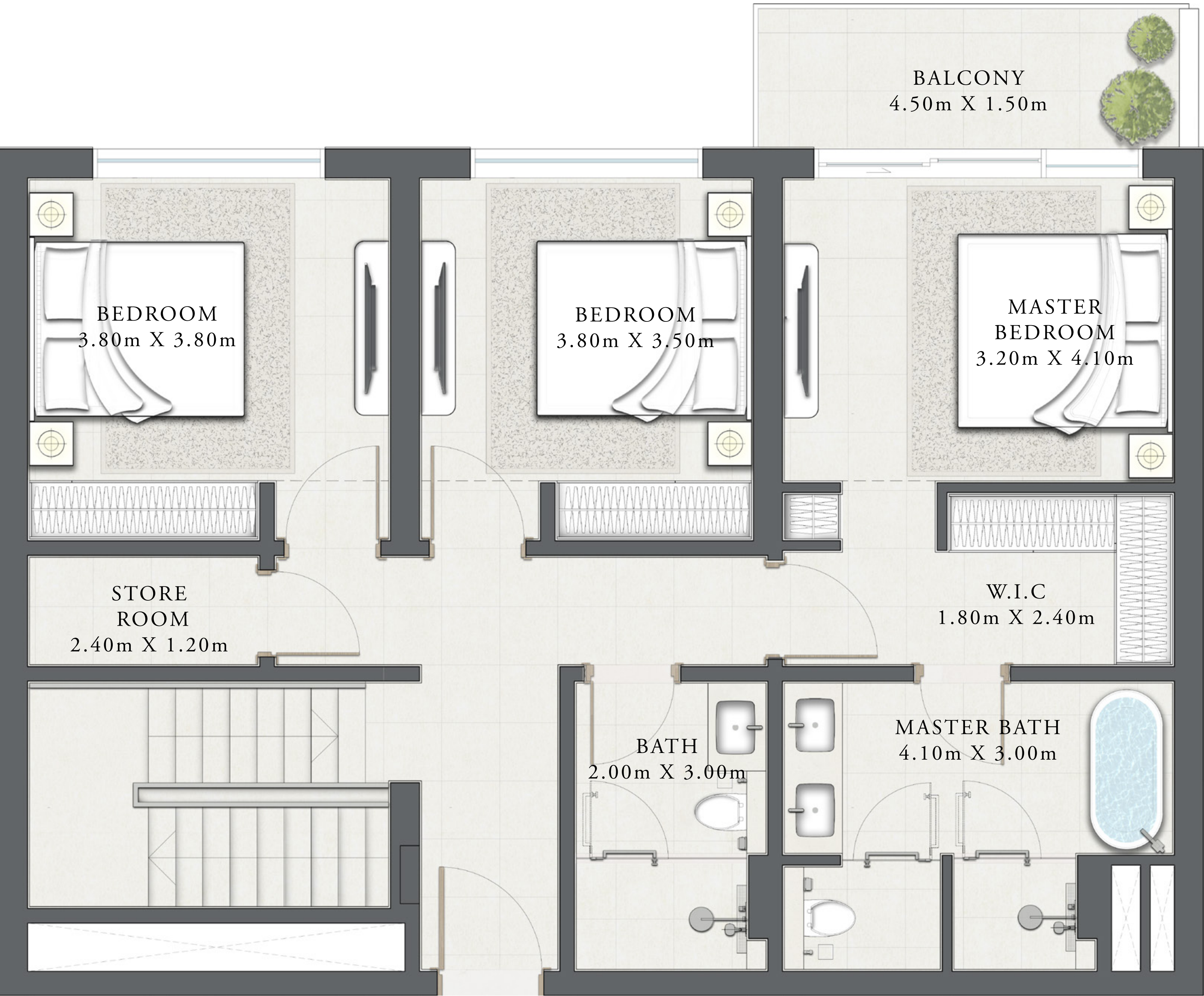
KEY PLAN



KEY SECTION



N ←



UPPER LEVEL



LOWER LEVEL

FLOOR PLAN 1. All dimensions are in imperial and metric, and measured from finish to finish excluding construction tolerances. 2. All materials, dimensions, and drawings are approximate only. 3. Information is subject to change without notice, at developer's absolute discretion. 4. Actual area may vary from the stated area. 5. Drawings not to scale. 6. All images used are for illustrative purposes only and do not represent the actual size, features, specifications, fittings, and furnishings. 7. The developer reserves the right to make revisions / alterations, at it's absolute discretion, without any liability whatsoever.

SEASCAPE

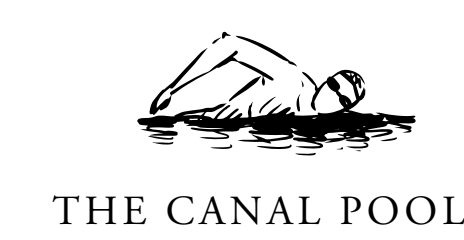
RASHID YACHTS & MARINA

BUILDING 2 TOWNHOUSE TYPE 2E

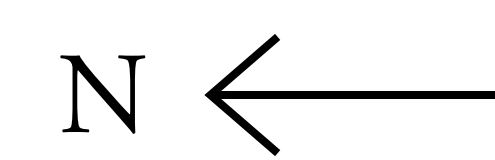
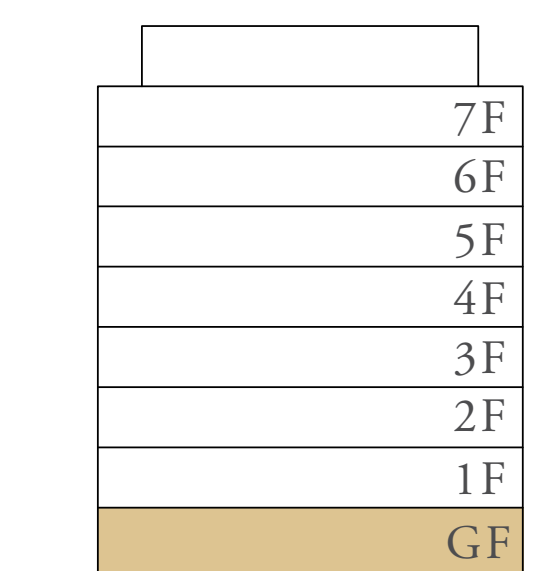
LEVEL GF UNIT 04

SUITE AREA	2,137.07 SQ.FT.	198.54 SQ.M.
TERRACE /BALCONY AREA	561.98 SQ.FT.	52.21 SQ.M.
TOTAL AREA	2,699.05 SQ.FT.	250.75 SQ.M.

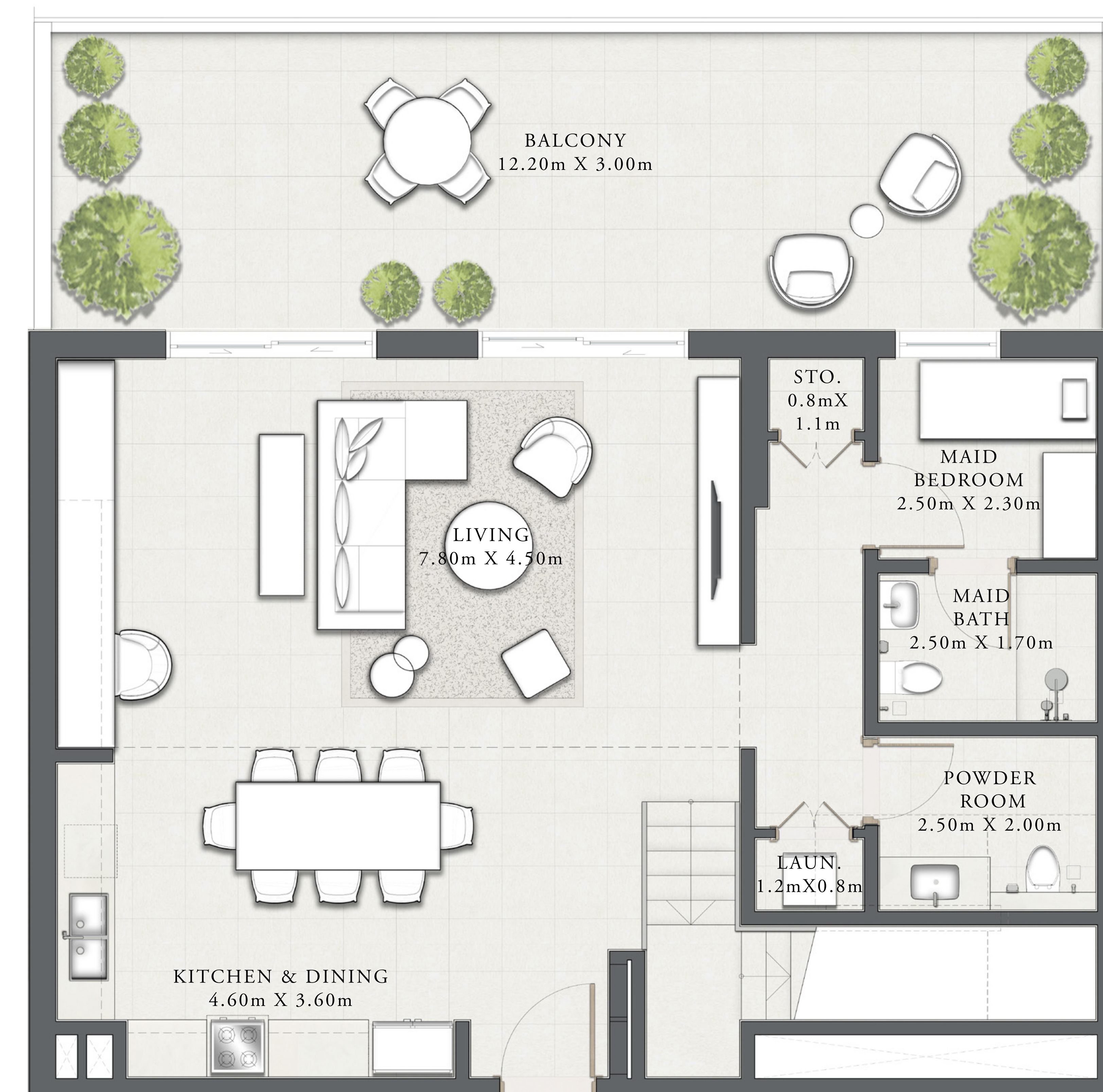
KEY PLAN



KEY SECTION



UPPER LEVEL



LOWER LEVEL

FLOOR PLAN 1. All dimensions are in imperial and metric, and measured from finish to finish excluding construction tolerances. 2. All materials, dimensions, and drawings are approximate only. 3. Information is subject to change without notice, at developer's absolute discretion. 4. Actual area may vary from the stated area. 5. Drawings not to scale. 6. All images used are for illustrative purposes only and do not represent the actual size, features, specifications, fittings, and furnishings. 7. The developer reserves the right to make revisions / alterations, at it's absolute discretion, without any liability whatsoever.