

nwind, reconnect, elevate.
[QWT JCXGP CYÒVU



R

efreshing
as nature itself...



Acube Developments is a distinguished real estate development company with a strong presence in Dubai and extensive expertise in creating exceptional residential, commercial, and other projects. Known for our innovative approach, we specialize in delivering tailored construction and development solutions that exceed expectations.

At Acube Developments, we pride ourselves on being a trusted partner for investors and homebuyers, ensuring the seamless execution and success of every project, from inception to completion. Rooted in values of loyalty, trust, and excellence, we have established ourselves as a prominent name in Dubai's real estate development sector. Our diverse portfolio features some of the region's most sought after properties, redefining the standards of modern living and investment.

LIVE ON A STAR



Vega draws its name from the brightest star in the northern constellation of Lyra. Rising as a G+3P+18F residential building, Vega stands tall in the vibrant district of Dubai Sports City, renowned for its energetic lifestyle and modern amenities.

As our third thriving project, Vega offers a stunning selection of luxury studio, one , two , and three bedroom apartments, each thoughtfully designed to blend comfort, style & functionality. Inspired by the soothing essence of nature, Vega incorporates carefully chosen elements to bring the outdoors in, creating a rejuvenating living environment.





;J[-PXGUV KP (WDÒ

Consistent Growth

Dubai's real estate market is demonstrating consistent growth, with the city's all residential property price index (RPPI) seeing a 20.71% increase in Q1 2024, compared to the same period last year.

Rental Income Potential

Dubai Sports City offers investors a lucrative opportunity to generate steady ROIs, with average rental yields ranging from 6% to 10%.

Early Investment

Investing in off plan properties allows investors to purchase properties at market competitive pricing and potentially benefit from significant capital appreciation as the project nears completion.

Golden Visa

Dubai offers a Golden Visa program that provides long term residency for investors, entrepreneurs, and professionals, making it easier to live, work, and invest in the country.

Global Business Hub

Dubai is strategically located at the crossroads of Europe, Asia, and Africa, making it a global business hub and attracting foreign direct investment into the country.

Tax Free Policy

Dubai offers a tax free environment for both personal and corporate income, making it an attractive destination for investors.

Sustainable Development

Dubai's continuous commitment to prioritizing sustainable practices in all aspects of development, including energy, transportation, and waste management, makes it ideal for a means of enjoying attractive returns while contributing to a greener future.

Duba2040 Plan

Dubai's ambitious '2040 Master Plan' is a comprehensive roadmap designed to transform Dubai into a sustainable, vibrant, and inclusive city in various key sectors including, urbanization, mobility, housing, education, and healthcare.

Cultural Diversity

Dubai's commitment to diversity and inclusion has made it a popular destination for individuals and businesses seeking a global environment.

(WDÒ 7RQTV 'KV[



Vega is perfectly positioned in Dubai Sports City, a dynamic hub celebrated for its world class sports facilities, expansive green landscapes, and an impressive array of lifestyle amenities. Residents of Vega can enjoy unparalleled convenience, with proximity to top tier schools, premium healthcare facilities, and an array of recreational options, including cricket stadiums, golf courses, football arenas, and more. The neighborhood also boasts a rich selection of shopping malls, lush parks, and diverse dining experiences to suit every palate.

With seamless connectivity to Dubai's iconic landmarks—such as the Burj Al Arab, Palm Jumeirah, and Downtown Dubai—along with easy access to major transportation routes, Dubai Sports City offers an unmatched blend of convenience and sophistication, making Vega the perfect home to experience it all.



N G Y G Z R G T K G P E G U
everywhere, every day.



Experience ultra sophisticated amenities at Dubai Sports City, surrounded by luxury, etched with convenience. Indulge in world class shopping experiences, dining, and more steps away from your serene retreat.

P
ÖQTÖKE XKGYU
DTGCVJVĐKPI ÝTK\QPU

Whether you crave the calm of a serene day or the energy of a vibrant evening, Vega's thoughtfully designed amenities offer a seamless balance of nature and luxury, making it a place where you can live, relax, and truly feel at home.



Living with nature's touch



Picture yourself in a moment of serene connection, where the soothing touch of nature envelops you. Amid lush greenery, with the gentle rustle of leaves and soft whispers of the forest, experience a place that invites you to unwind, breathe, and find peace. The perfect escape, where life feels both calm and vibrant.

U



Within Reach

0-5 Minutes

- Dubai International Cricket Stadium
- Dubai Autodrome
- The Els Club
- Jumeirah Village Circle
- Jumeirah Village Triangle
- Arjan
- Motor City
- Production City

10-15 Minutes

- Burj Al Arab
- Palm Jumeirah
- Al Barsha
- Dubai Internet City
- Dubai Studio City
- Dubai Investment Park
- Expo 2020
- Al Furjan

15-25 Minutes

- Downtown / Burj Khalifa
- Business Bay
- Dubai Marina
- Dubai Investments Park
- Jebel Ali
- Al Maktoum International Airport
- IMG Worlds of Adventure
- Global Village

7 E Ý Q N Q U R K V Ô N U

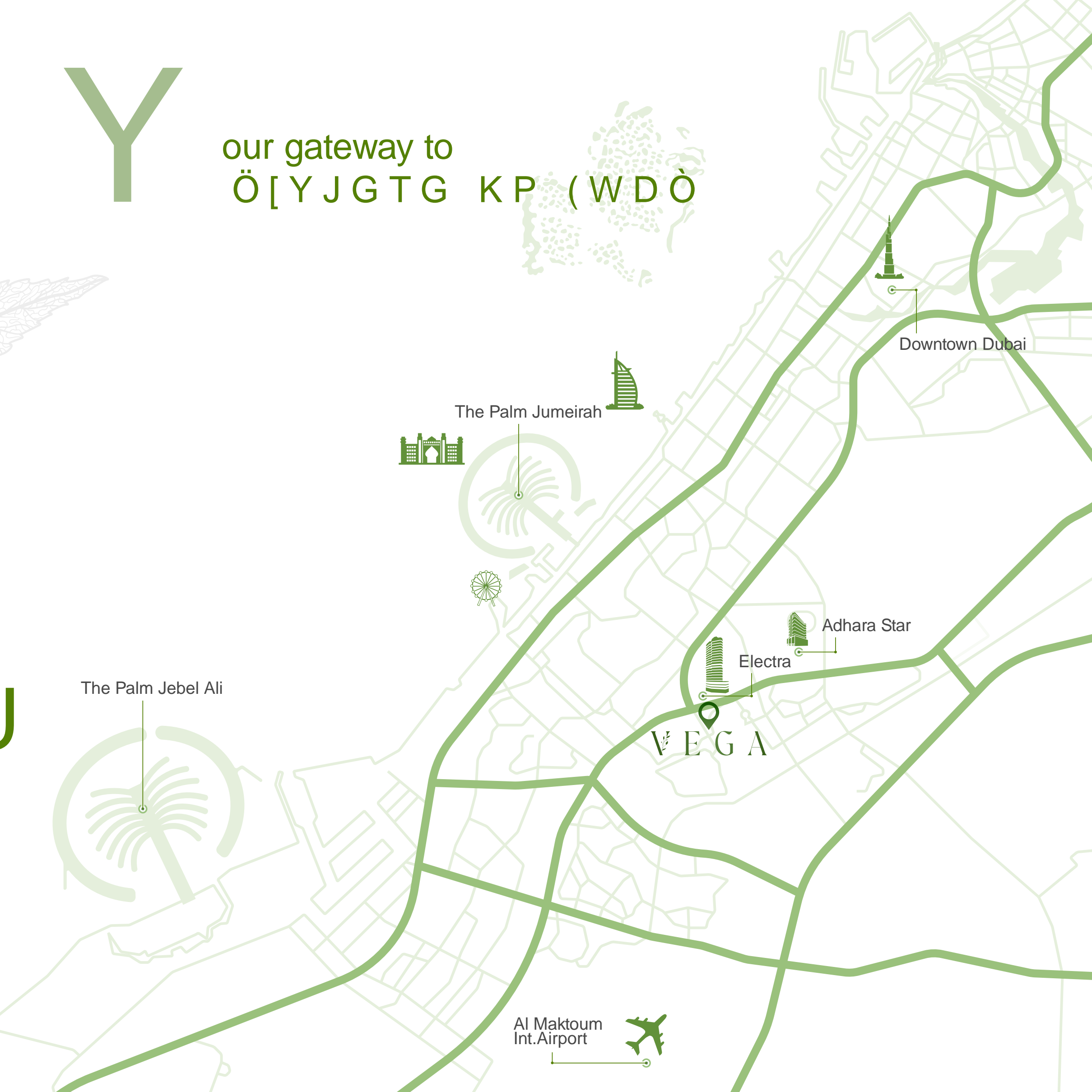
- The Royal Grammar School (6 minutes away)
- Dwight School Dubai (6 minutes away)
- Australian International School (6 minutes away)
- JSS International School (6 mins. Away)
- Gems Metropole School (10 minutes away)
- Sunmarke School (10 minutes away)
- Gems Founders School (12 minutes away)
- King's School Al Barsha (14 minutes away)

- HMC Medical Centre (6 minutes away)
- Medcare Medical Centre (6 minutes away)
- Emirates Hospital Day Surgery (10 minutes away)
- Saudi German Hospital (11 minutes away)
- Mediclinic Parkview Hospital (11 minutes away)
- American Hospital (13 minutes away)
- NMC Royal Hospital (14 minutes away)

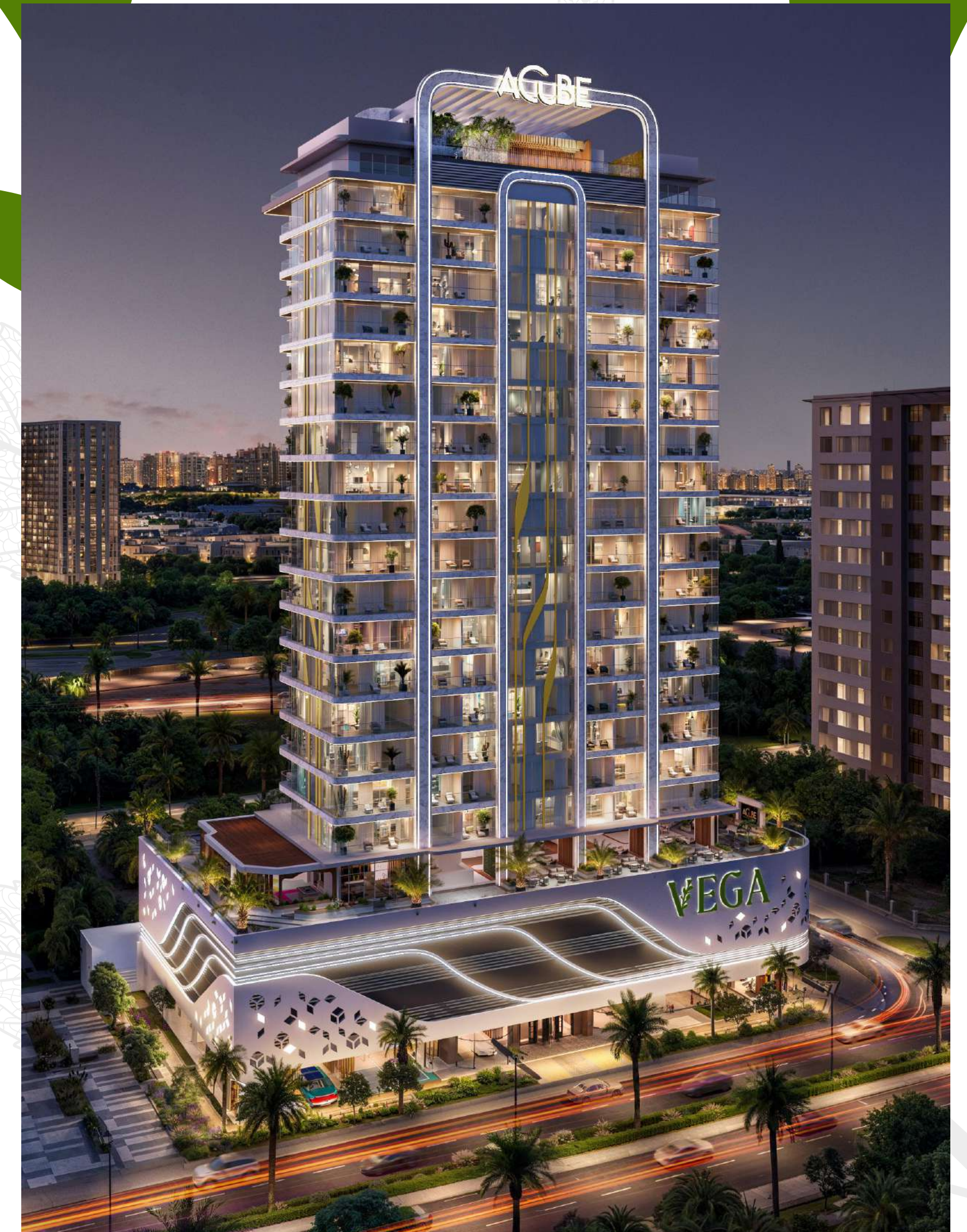
- City Centre Maiseh (10 minutes Away)
- Dubai Hills Mall (13 minutes Away)
- Circle Mall JVC (14 minutes Away)
- Dubai Marina Mall (15 minutes Away)
- Ibn Battuta (16 minutes Away)
- Al Barsha Mall (16 minutes Away)
- Mall of the Emirates (20 minutes Away)
- Dubai Mall (25 minutes Away)

Y

our gateway to
Ö [Y J G T G K P (W D Ö



Savor life's
SWKGV ÛOGPVU



35+

% O G P K V K G U



Every day is a new experience with our thoughtfully put together world class amenities, from immersive pools to therapeutic wellness facilities such as a separate sauna, jacuzzi, and steam rooms for men and women, prioritizing privacy. Everything you need is right here.

% O G P K V K G U



Modern
Lobby



CrossFit
Area



Jogging
Track



Net
Cricket



Table
Tennis



Pickleball
Court



Wellness
Garden



Rock
Oasis



Sensory Water
Therapy



Pilates
Studio



Outdoor
Yoga Studio



Outdoor
Cinema



Multi
Function Hall



Co working
Lounge



Gamers'
Lounge



Kids' Indoor
Play Area



Kids' Outdoor
Play Area



Toddler
Play Area



Children's
Library



Ladies
Sauna



Ladies
Jacuzzi



Ladies
Steam Room



Gents
Sauna



Gents
Jacuzzi



Gents
Steam Room



Fully Equipped
Gym



Water
Fall



Water
Cave



Pool Deck
Lounge



Sky
Pool



Kids'
Pool



ANPR
System



E vehicle
Charging



Facial
Recognition Access



24/7
Security



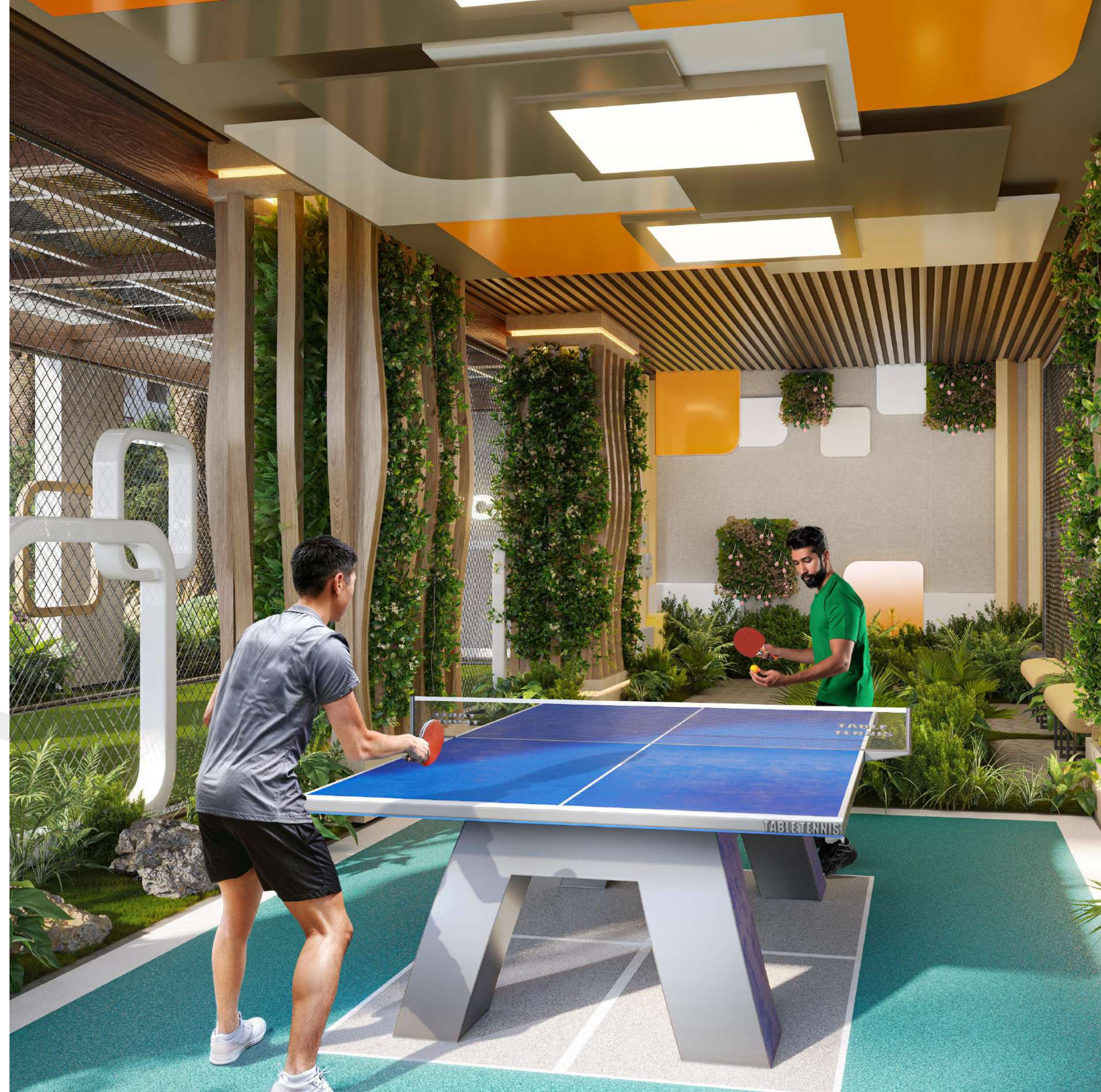
Pet
Friendly

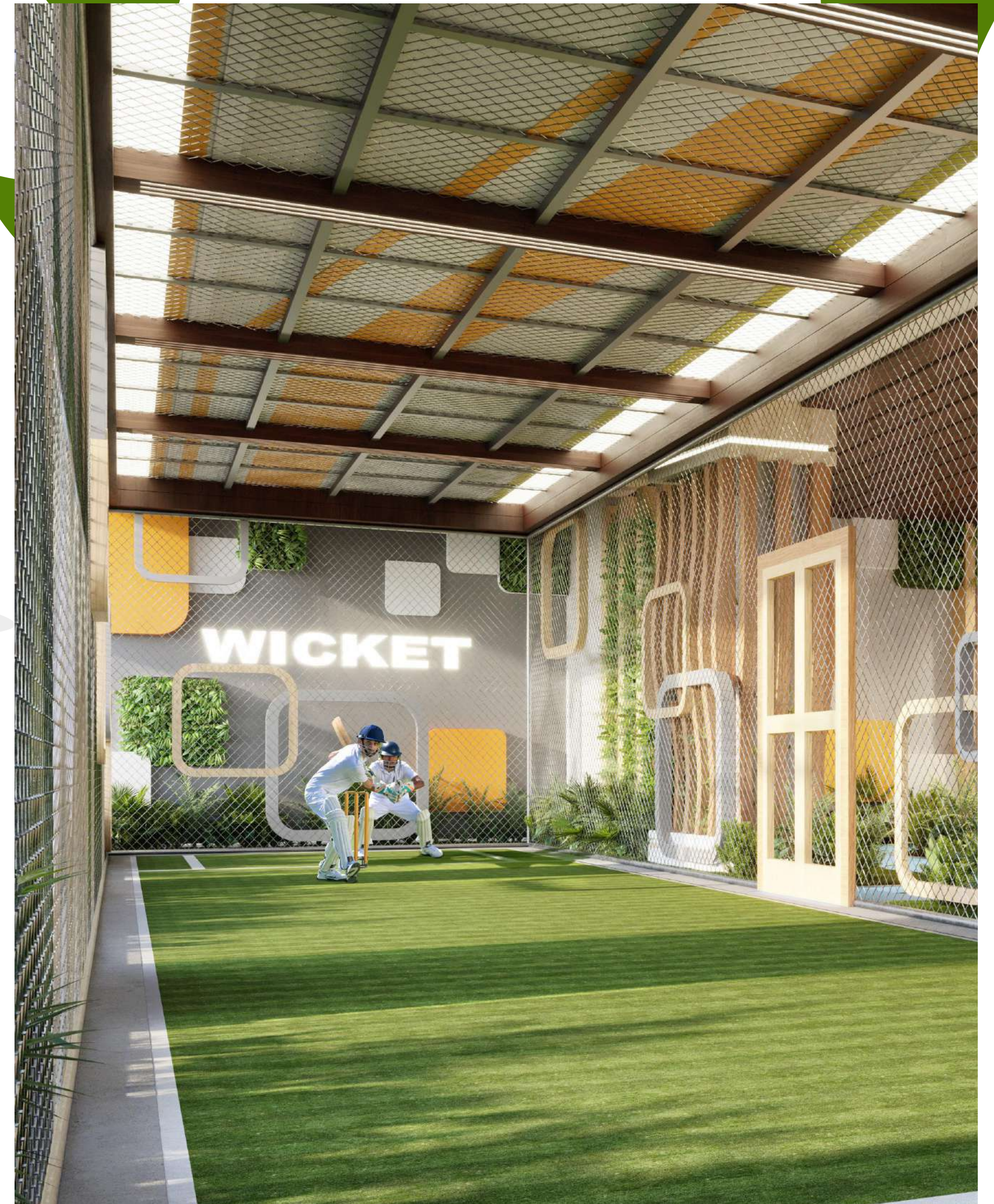


Vastu
Compliant

Life in nature
UV x VU JGTG

Welcomed by nature, surrounded by exquisite amenities. From your serene rock oasis to an interactive jogging track, and a dedicated pickleball court to channel your inner champion, every detail invites relaxation and recreation in perfect coexistence.



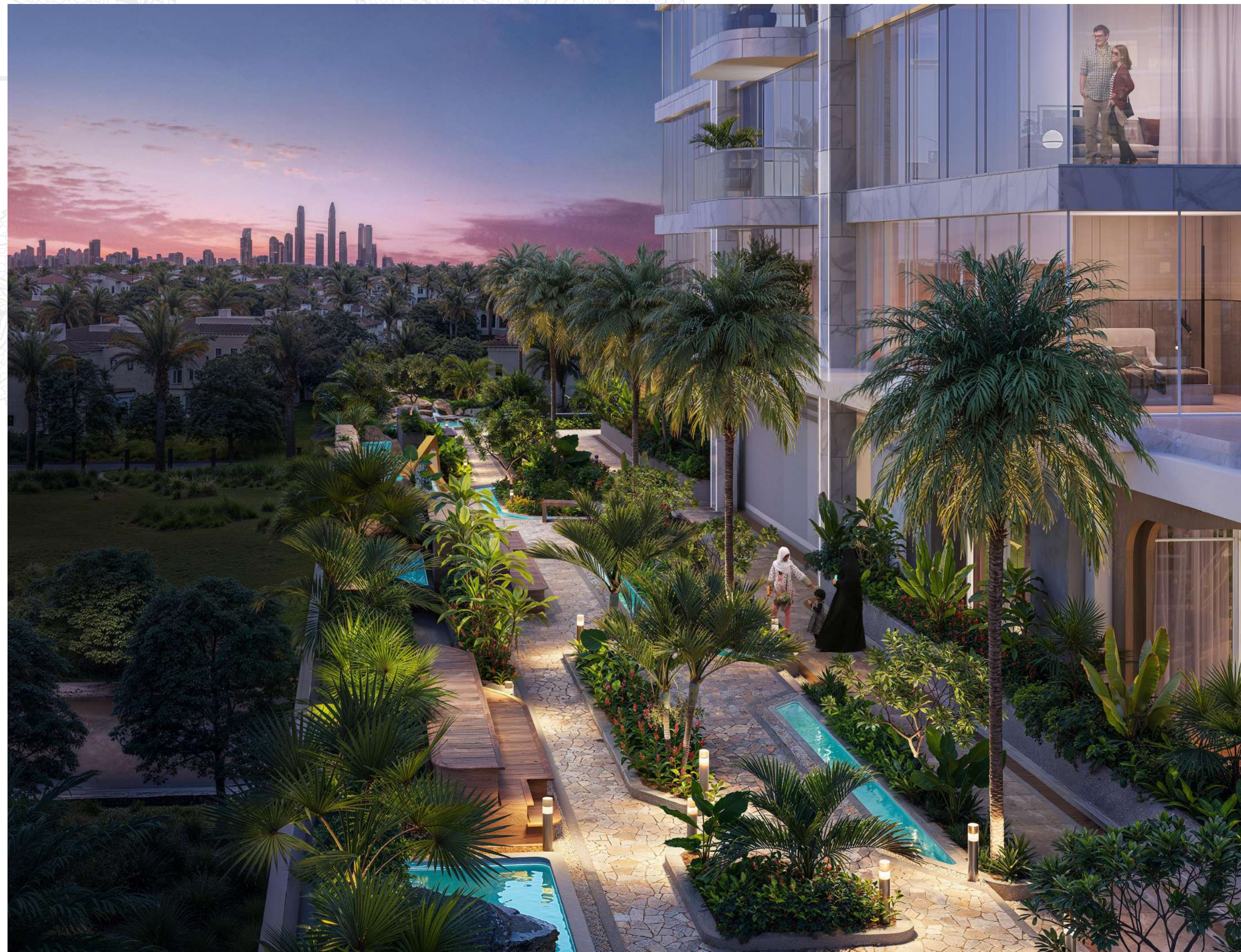


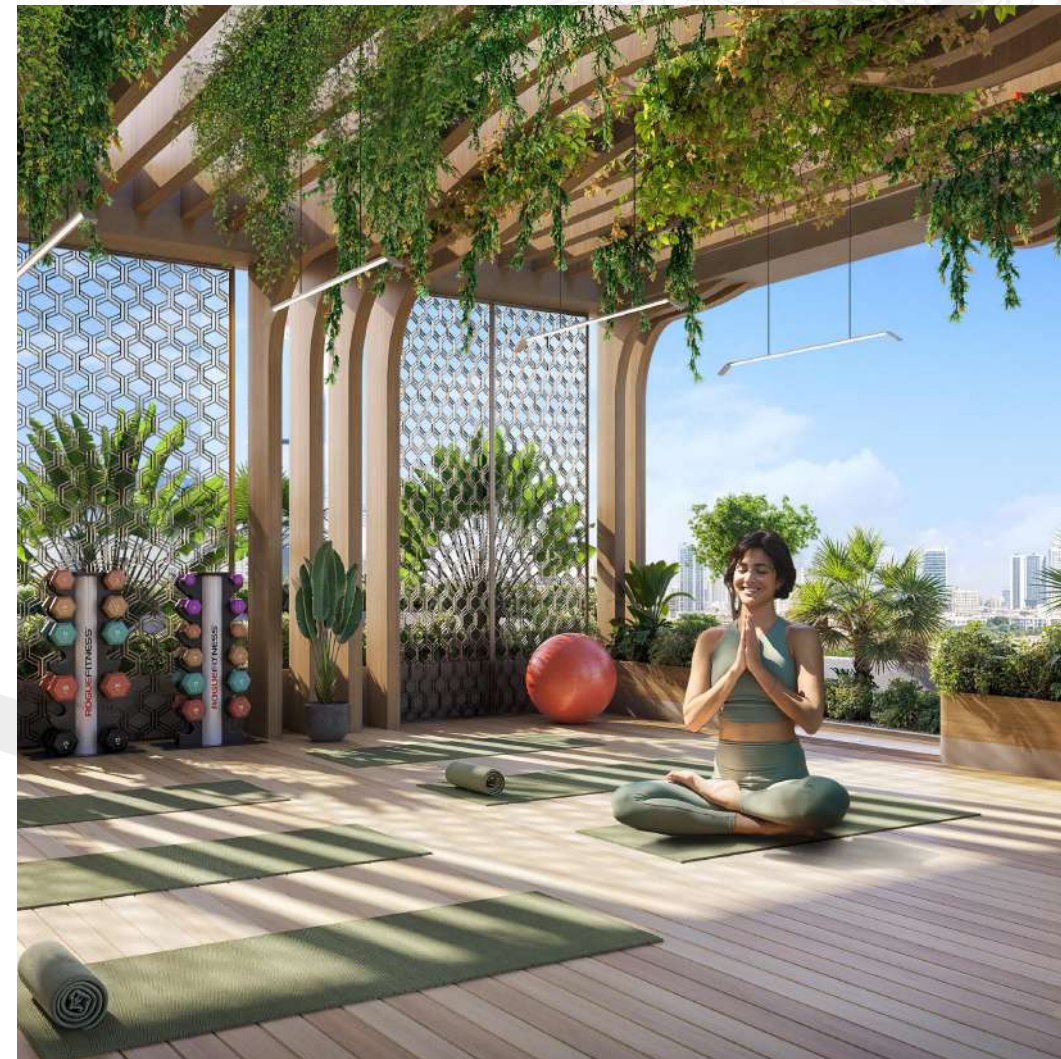
Discover
PGY VJKPIU FÒN[



Surrounded by nature's embrace, brings a sense of peace that an apartment can't quite match. Every window frames a view of greenery, making the world outside feel like an extension of your own space.







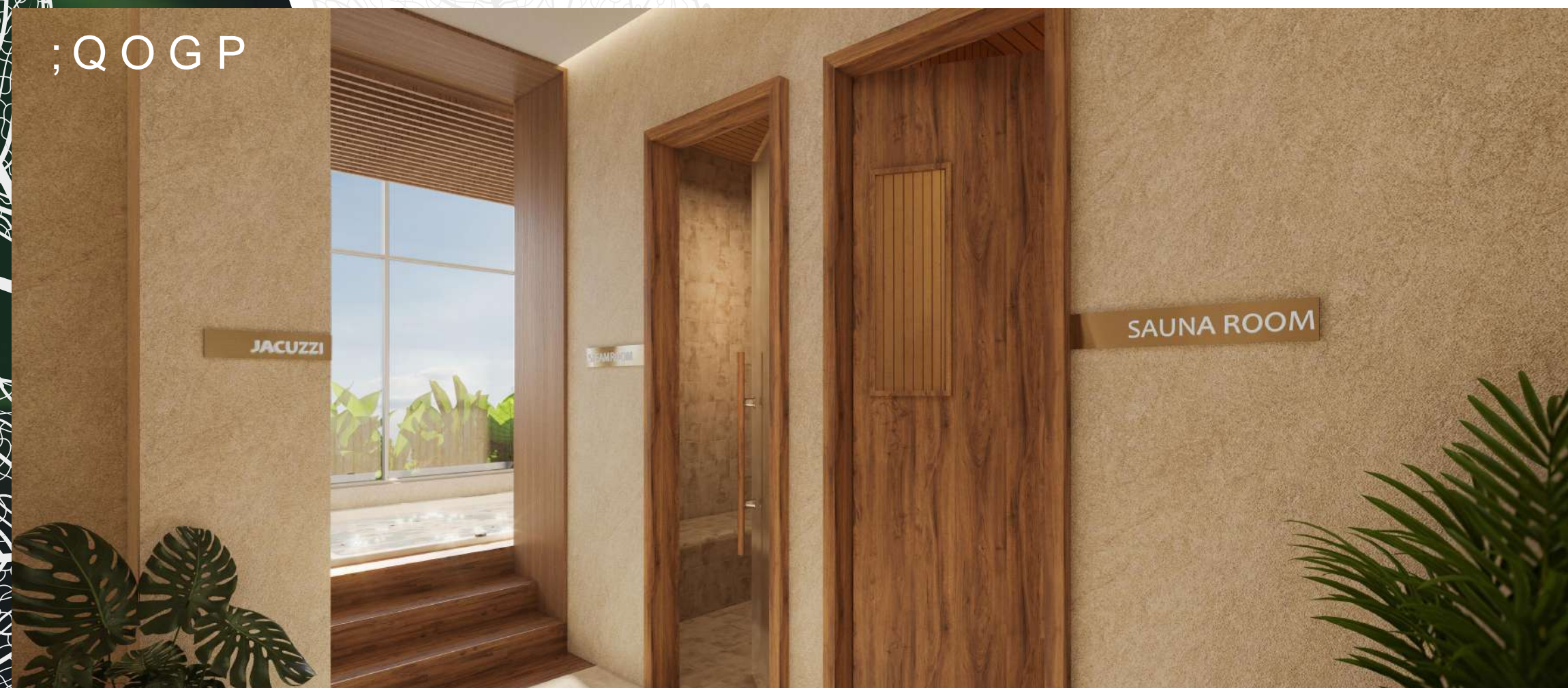
LGV [QWT E×GU
GXCRTCVG VQ ÚVJKPIPGUU



Men



;QOGP



Let your cares take the back seat with our carefully crafted amenities, offering everything from interactive pools to rejuvenating wellness facilities including separate saunas, jacuzzis, and steam rooms for men and women, right here, at Vega.

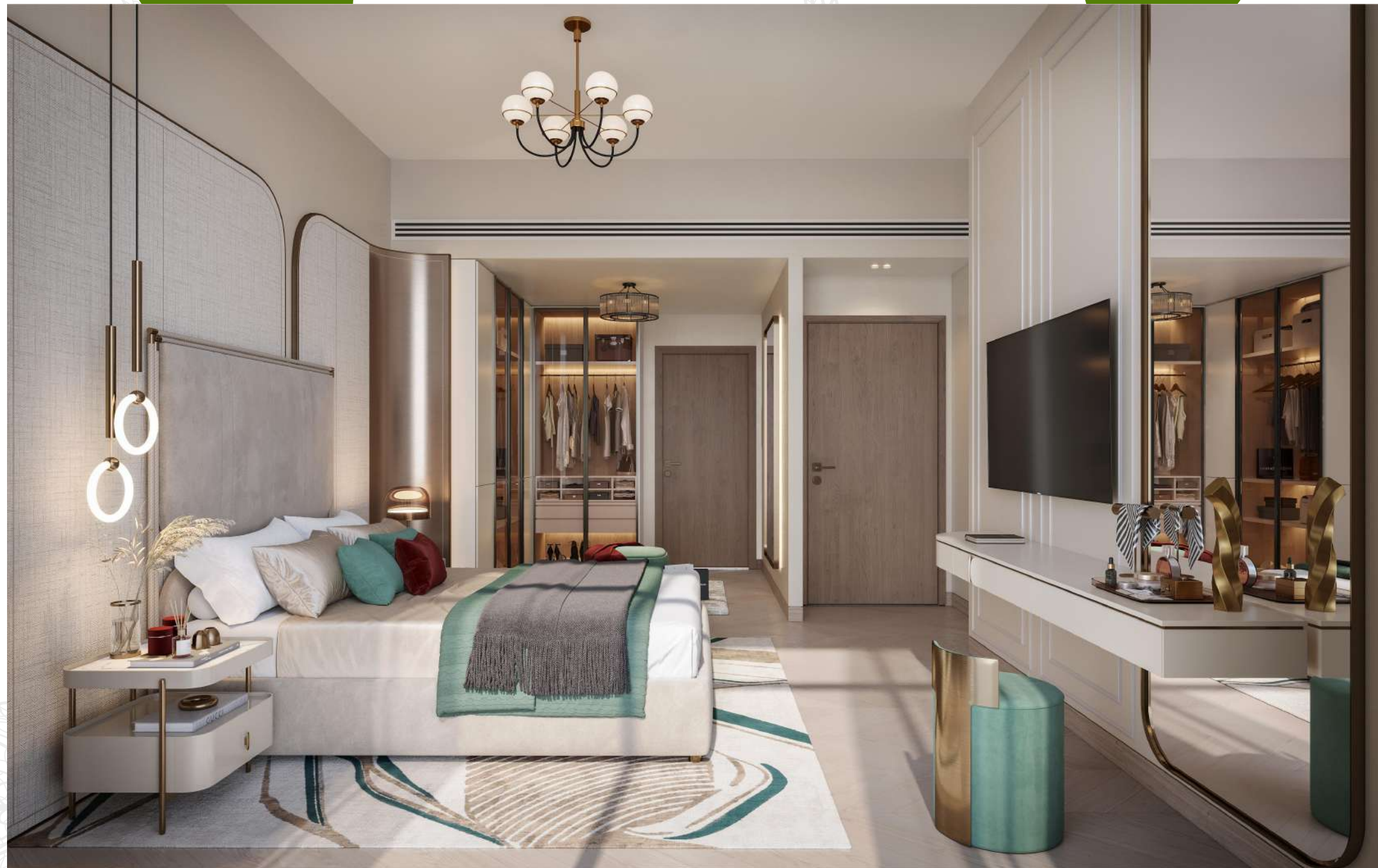


Live Love
Laugh



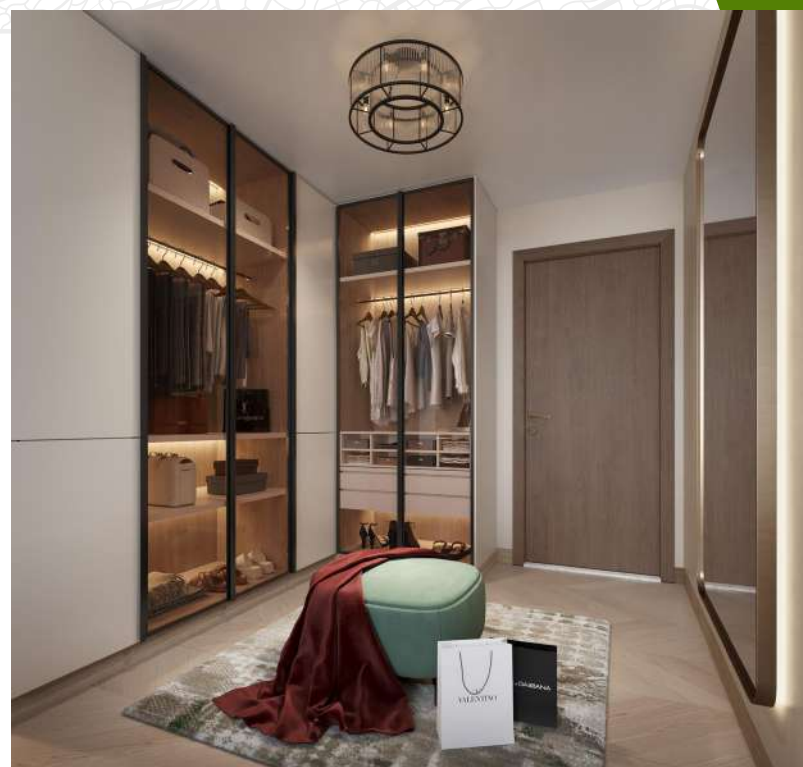
Nurture warmth, love, and togetherness set in warm, inviting spaces. Paint your memories on our canvas—brushed with strokes of joy, laughter, and treasured memories.





S

O x V N K X K F
E T Ñ V G F H



Feel at home in our thoughtfully designed, fully equipped & furnished smart homes—where the world is at your fingertips with a single touch.

ÜQT 4NÖ

8[RKEÔ +1% 4NÖ

1 TO 5 Floor Pla



Inspired by nature, our carefully crafted details blend the spirit of nature with contemporary designs, standing as a testament to meticulous design and architectural brilliance.

Disclaimer: Plan and details included are indicative only and are subject to change by the developer/seller at its sole discretion without notice and/or liability. Images, including features, finishes, furnishings and scale are illustrative only. Final areas, dimensions, layout and materials may differ from those shown.

8[RKEÔ +2% 4NÖ

6 TO 11 Floor Pla



8[RKEÔ +3% 4NÖ

12 TO 17 Floor P

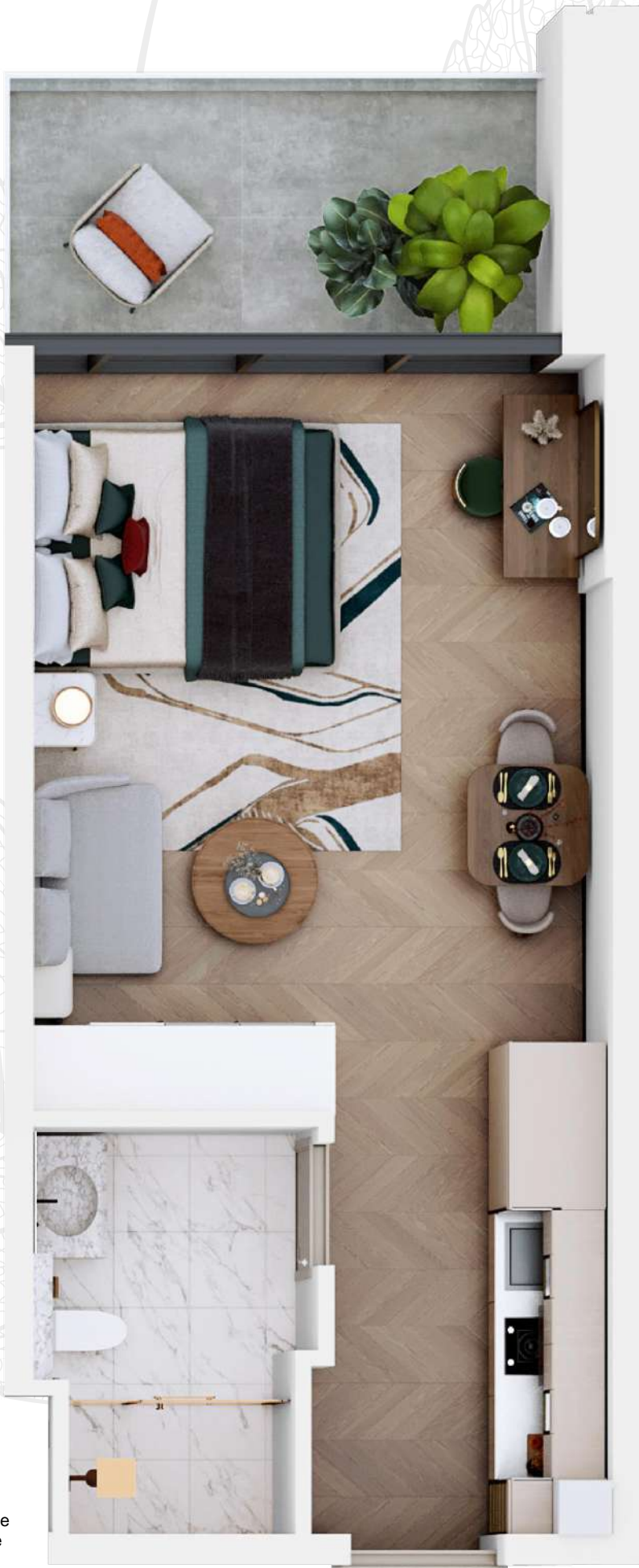


Disclaimer: Plan and details included are indicative only and are subject to change by the developer/seller at its sole discretion without notice and/or liability. All images, including features, finishes, furnishings and scale are illustrative only. Final areas, dimensions, layout and materials may differ from those stated.

7 V W F ß

Type 1

Total Area: 412 sq. ft.

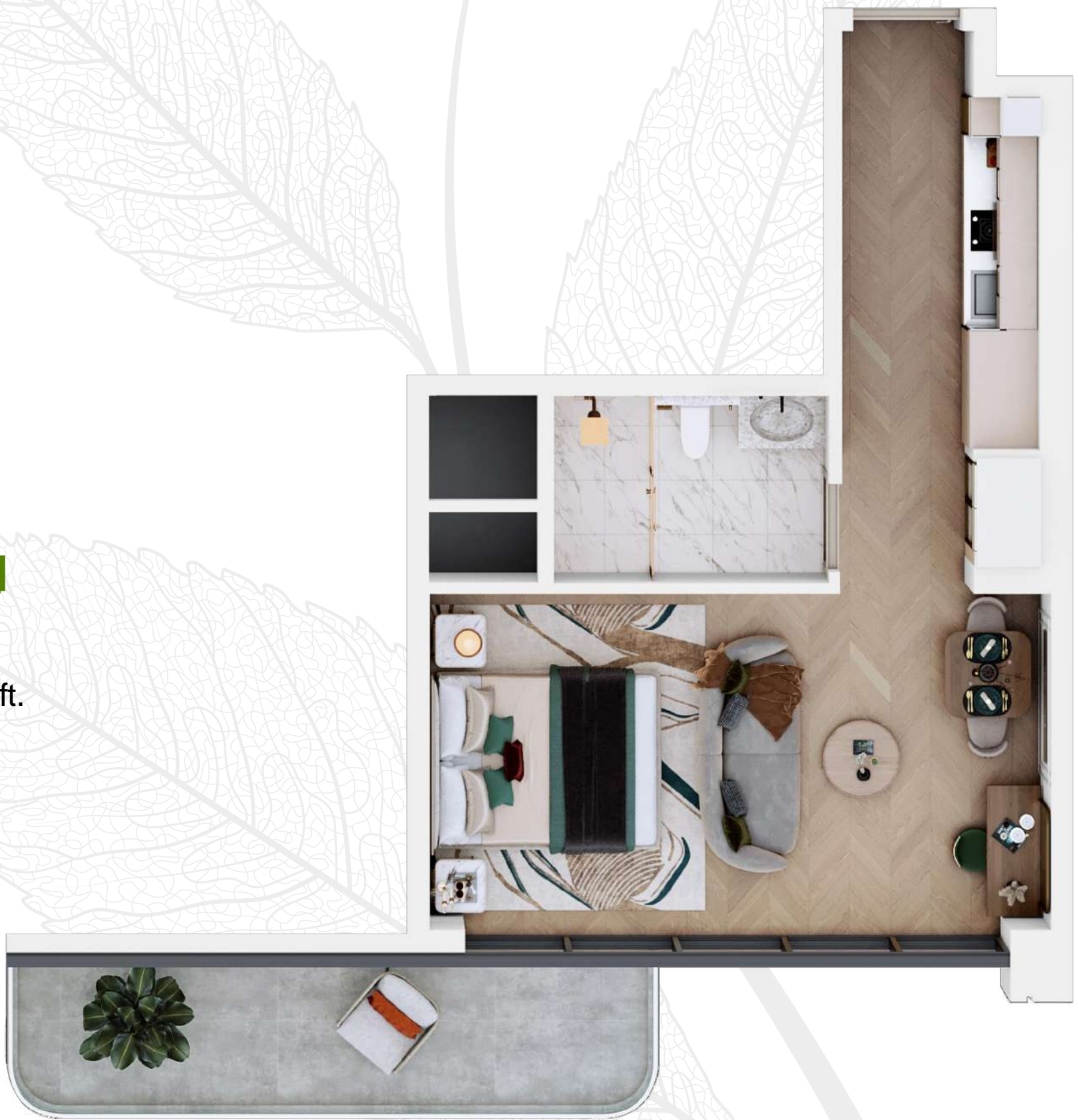


Disclaimer: Plan and details included are indicative only and are subject to change by the developer/seller at its sole discretion without notice and/or liability. All images, including features, finishes, furnishings and scale are illustrative only. Final areas, dimensions, layout and materials may differ from those stated.

7 V W F ß

Type 2

Total Area: 486 sq. ft.



Disclaimer: Plan and details included are indicative only and are subject to change by the developer/seller at its sole discretion without notice and/or liability. All images, including features, finishes, furnishings and scale are illustrative only. Final areas, dimensions, layout and materials may differ from those stated.

1 & GFTQQO

Type 1

Total Area: 746 sq. ft.

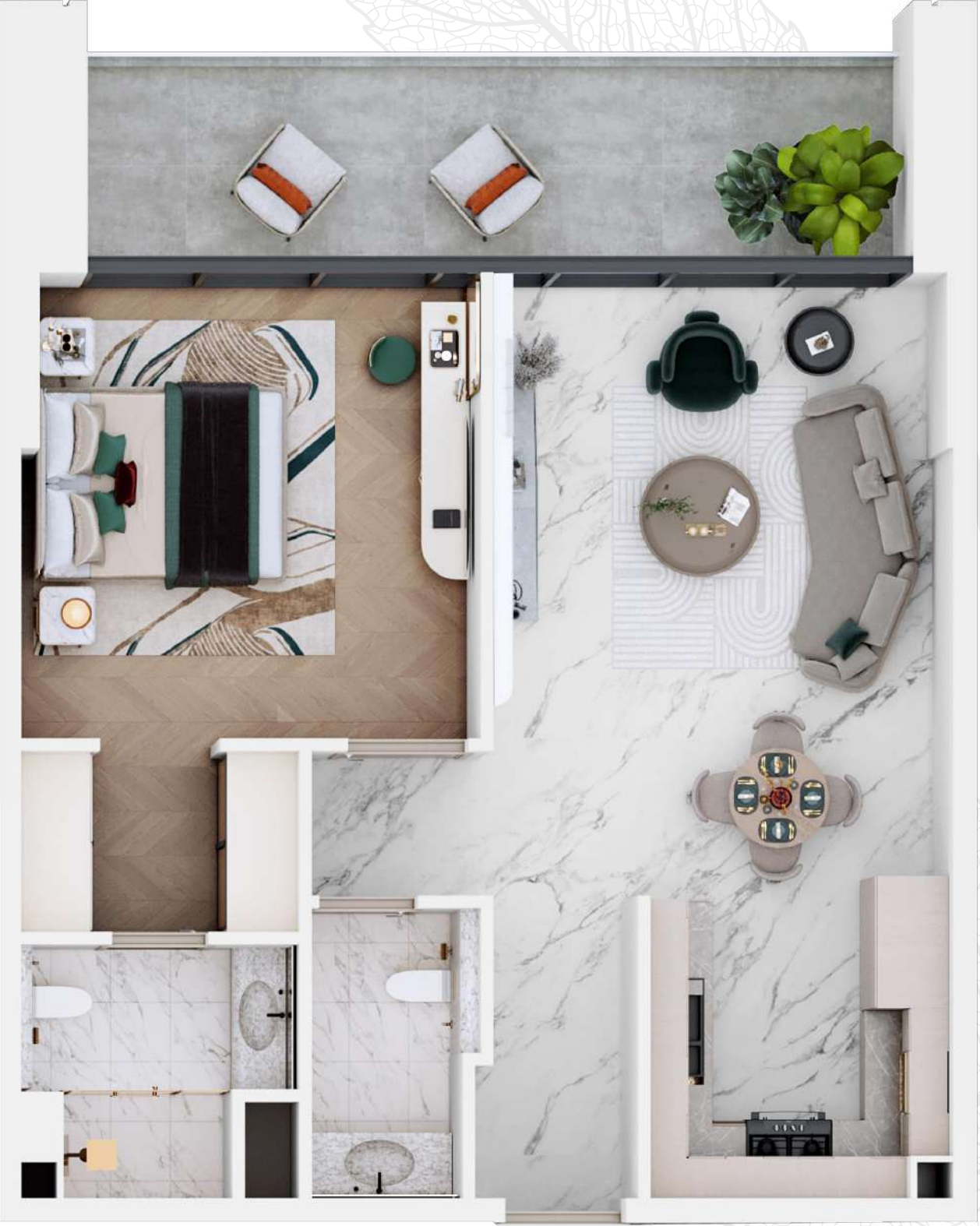


Disclaimer: Plan and details included are indicative only and are subject to change by the developer/seller at its sole discretion without notice and/or liability. All images, including features, finishes, furnishings and scale are illustrative only. Final areas, dimensions, layout and materials may differ from those stated.

1 & GFTQQO

Type 2

Total Area: 830 sq. ft.

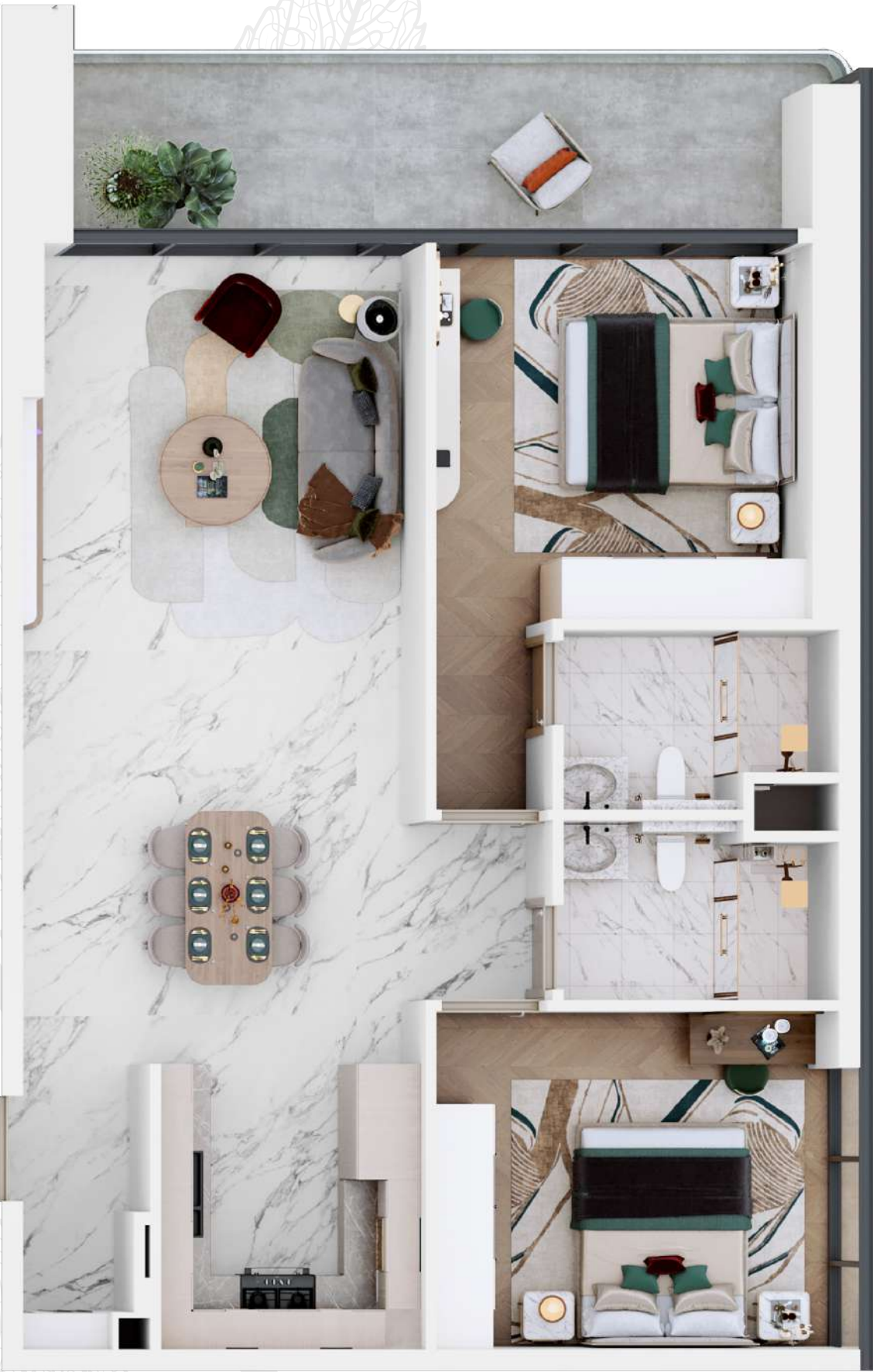


Disclaimer: Plan and details included are indicative only and are subject to change by the developer/seller at its sole discretion without notice and/or liability. All images, including features, finishes, furnishings and scale are illustrative only. Final areas, dimensions, layout and materials may differ from those stated.

2 & GFTQQO

Type 1

Total Area: 1072 sq. ft.



Disclaimer: Plan and details included are indicative only and are subject to change by the developer/seller at its sole discretion without notice and/or liability. All images, including features, finishes, furnishings and scale are illustrative only. Final areas, dimensions, layout and materials may differ from those stated.

2 & GFTQQO

Type 2

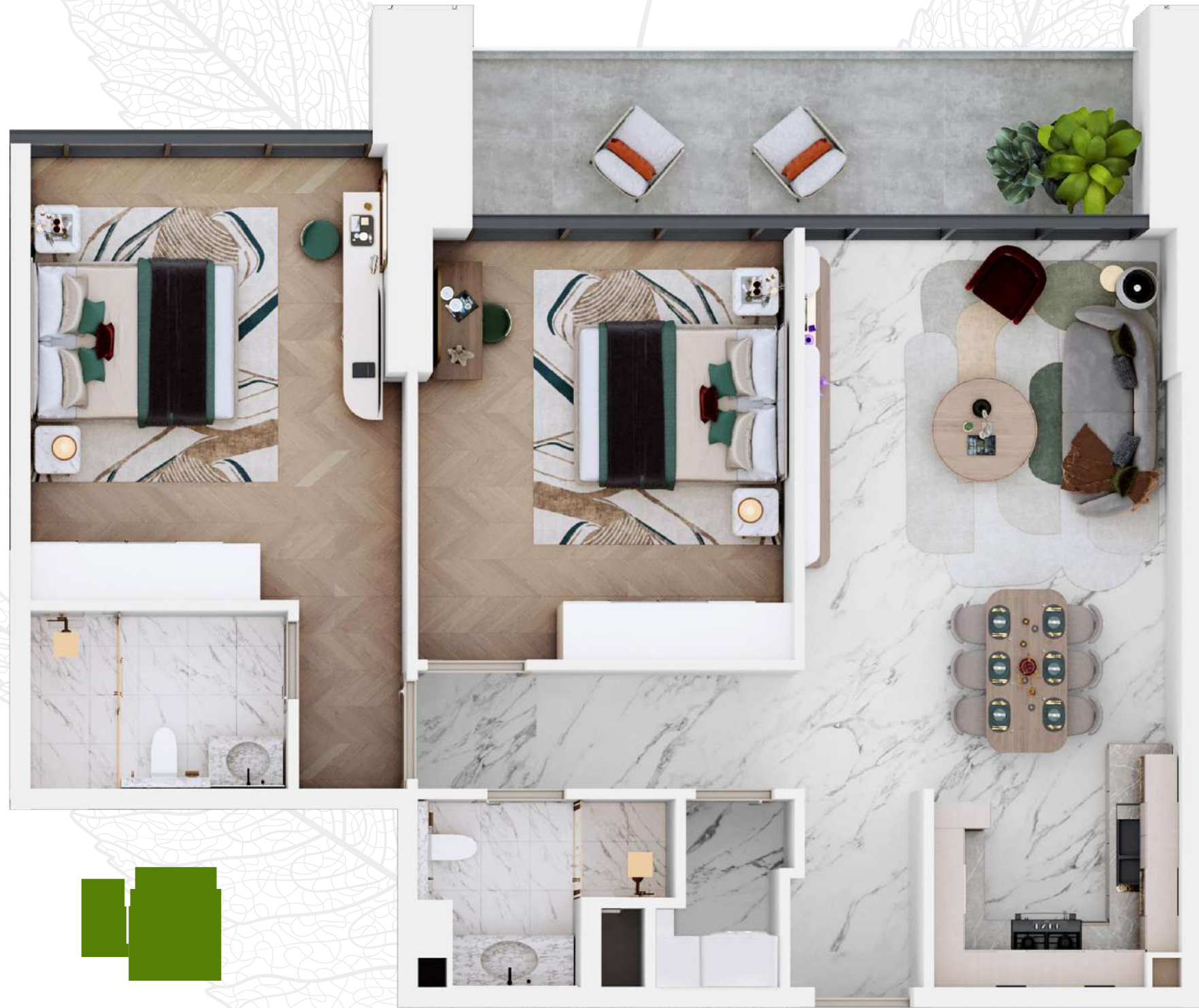
Total Area: 1113 sq. ft.



Disclaimer: Plan and details included are indicative only and are subject to change by the developer/seller at its sole discretion without notice and/or liability. All images, including features, finishes, furnishings and scale are illustrative only. Final areas, dimensions, layout and materials may differ from those stated.

2 & GFTQQO

Type 3



Total Area: 1077 sq. ft.

Disclaimer: Plan and details included are indicative only and are subject to change by the developer/seller at its sole discretion without notice and/or liability. All images, including features, finishes, furnishings and scale are illustrative only. Final areas, dimensions, layout and materials may differ from those stated.

2 & GFTQQO

Type 4

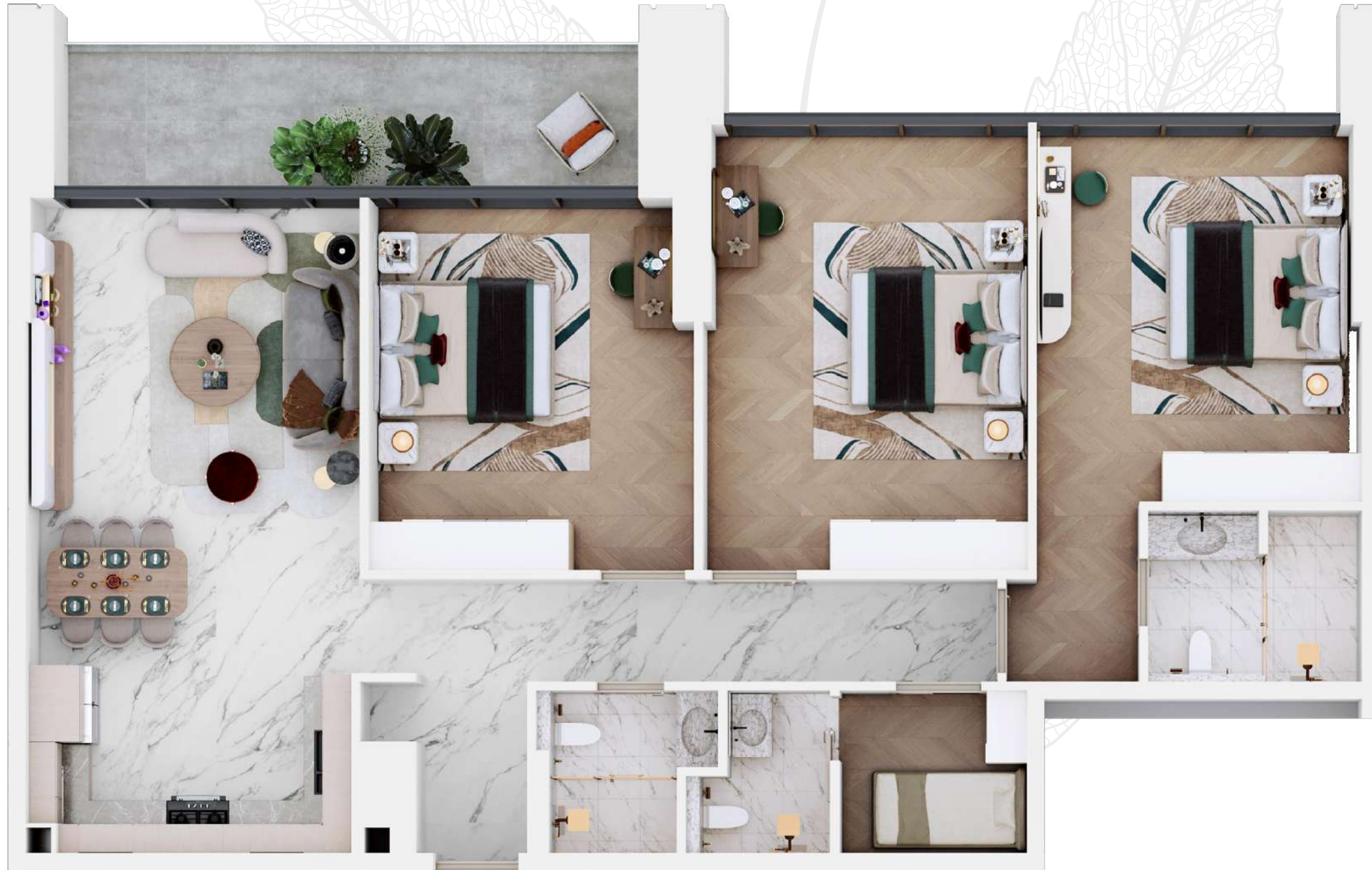


Total Area: 1206 sq. ft.

Disclaimer: Plan and details included are indicative only and are subject to change by the developer/seller at its sole discretion without notice and/or liability. All images, including features, finishes, furnishings and scale are illustrative only. Final areas, dimensions, layout and materials may differ from those stated.

3 & GFTQQO

Type 1



Total Area: 1488 sq. ft.

Disclaimer: Plan and details included are indicative only and are subject to change by the developer/seller at its sole discretion without notice and/or liability. All images, including features, finishes, furnishings and scale are illustrative only. Final areas, dimensions, layout and materials may differ from those stated.

ACUBE
DEVELOPMENTS

LIVE /
ON A
STAR

sales@acube.ae | 800 2282 8008
P2 R04 01, The Onyx Tower 1, Sheikh Zayed Road, Dubai, UAE



ACUBE

DEVELOPMENTS

0 - :) 3 2 % 7 8 % 6

www.acubedevelopments.ae

VEGA

BY

ACUBE
DEVELOPMENTS