

# Vista 3

AL REEM ISLAND



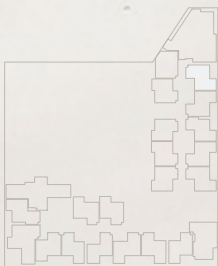
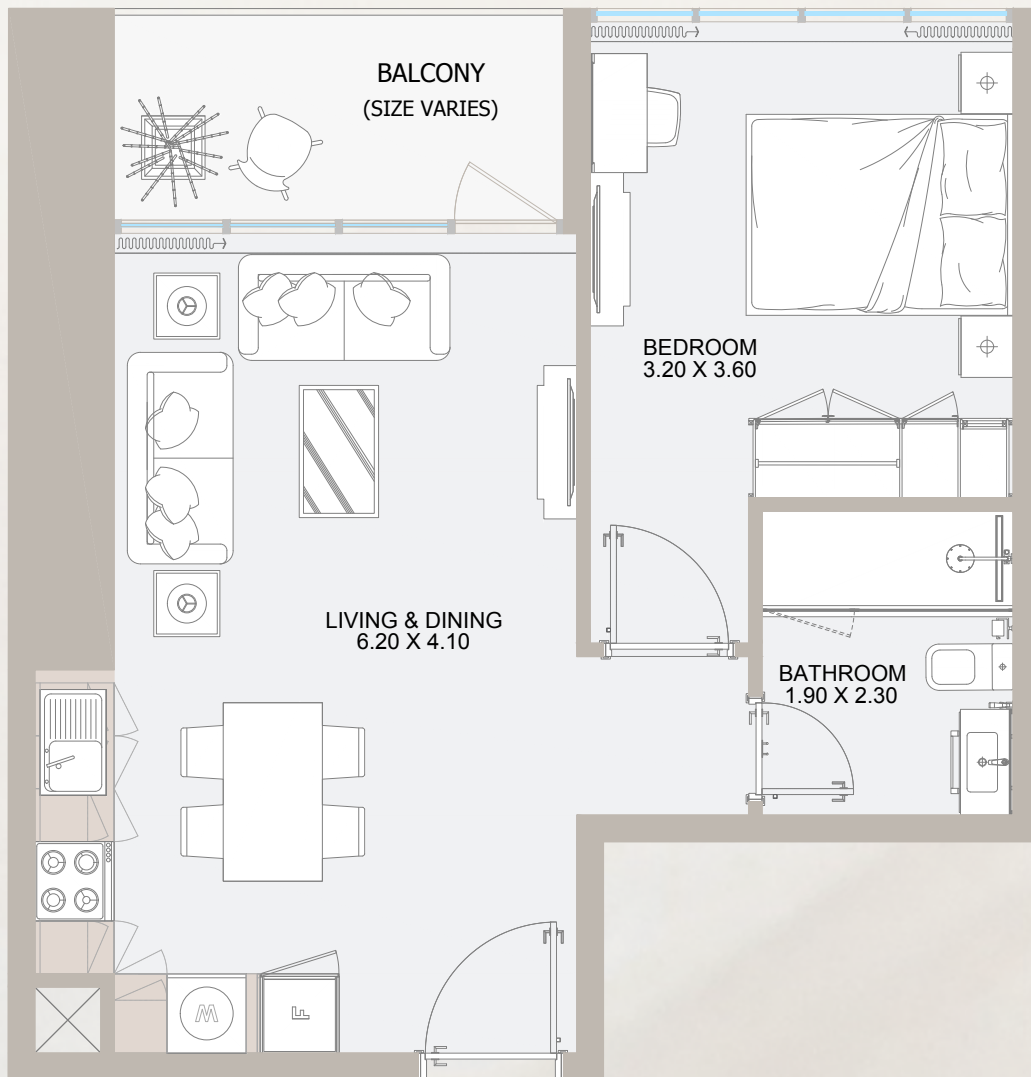








# 1B TYPE - A



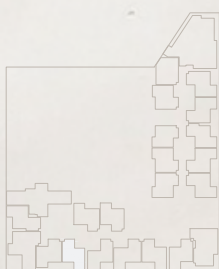
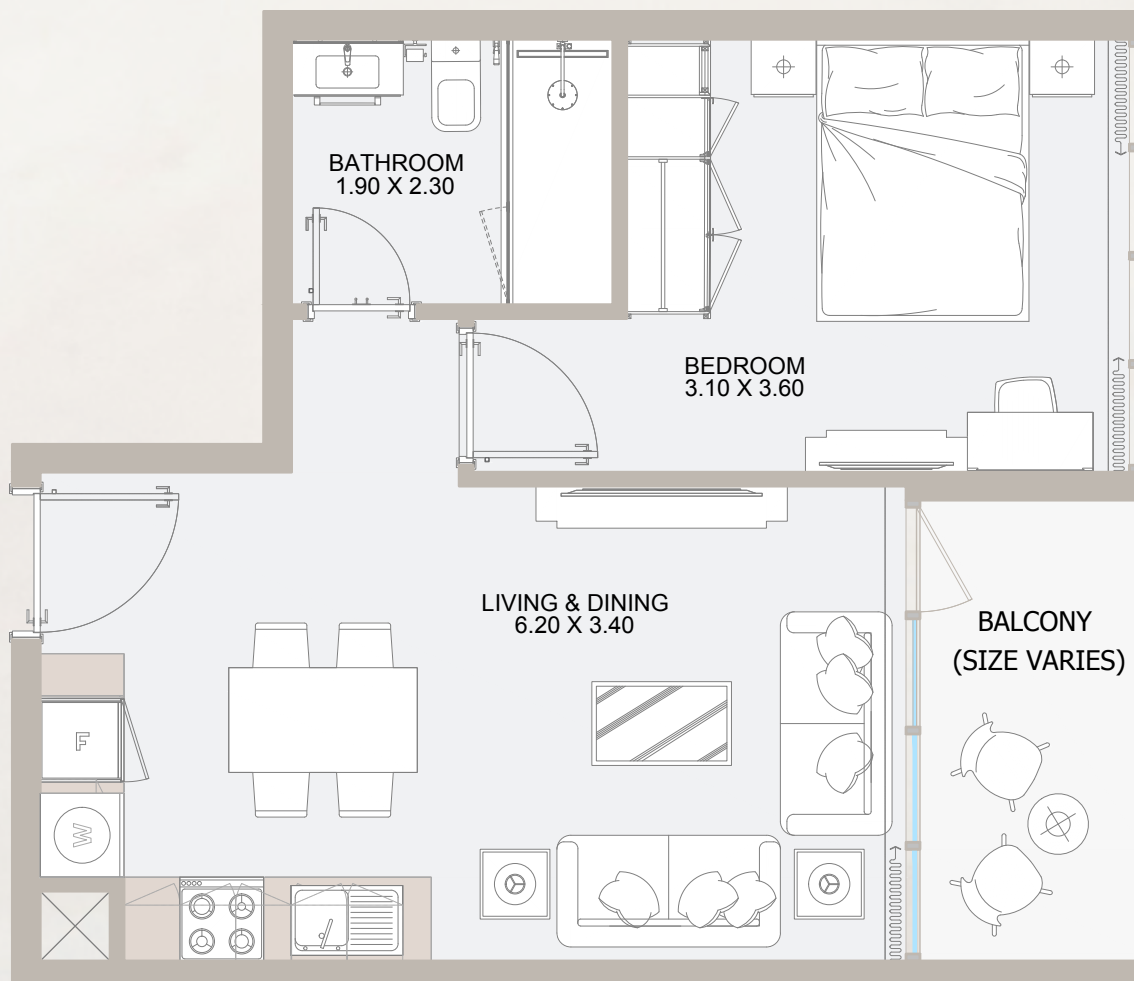
From 7<sup>th</sup> Floor to 32<sup>nd</sup> Floor

Internal Area	465 to 518.7 sq.ft
Outdoor Area	64 to 73.5 sq.ft
<b>Total Area</b>	<b>529 to 588.3 sq.ft</b>

All drawings and dimensions are approximate. Drawings are not to scale and are subject to change without notice. The developer reserves the right to make revisions. The units are measured at typical floors in the building and columns may vary in size depending on the floor level. The furnishing and accessories shown are for representation only. The availability, length and width of the balcony varies depending on which floor and which orientation the unit is located within the building. There will be slight differences in the internal areas between the same unit types depending on the shaft sizes that go through the units.



# 1B TYPE - B



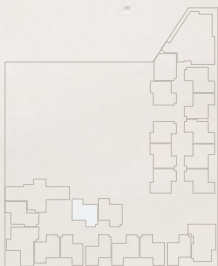
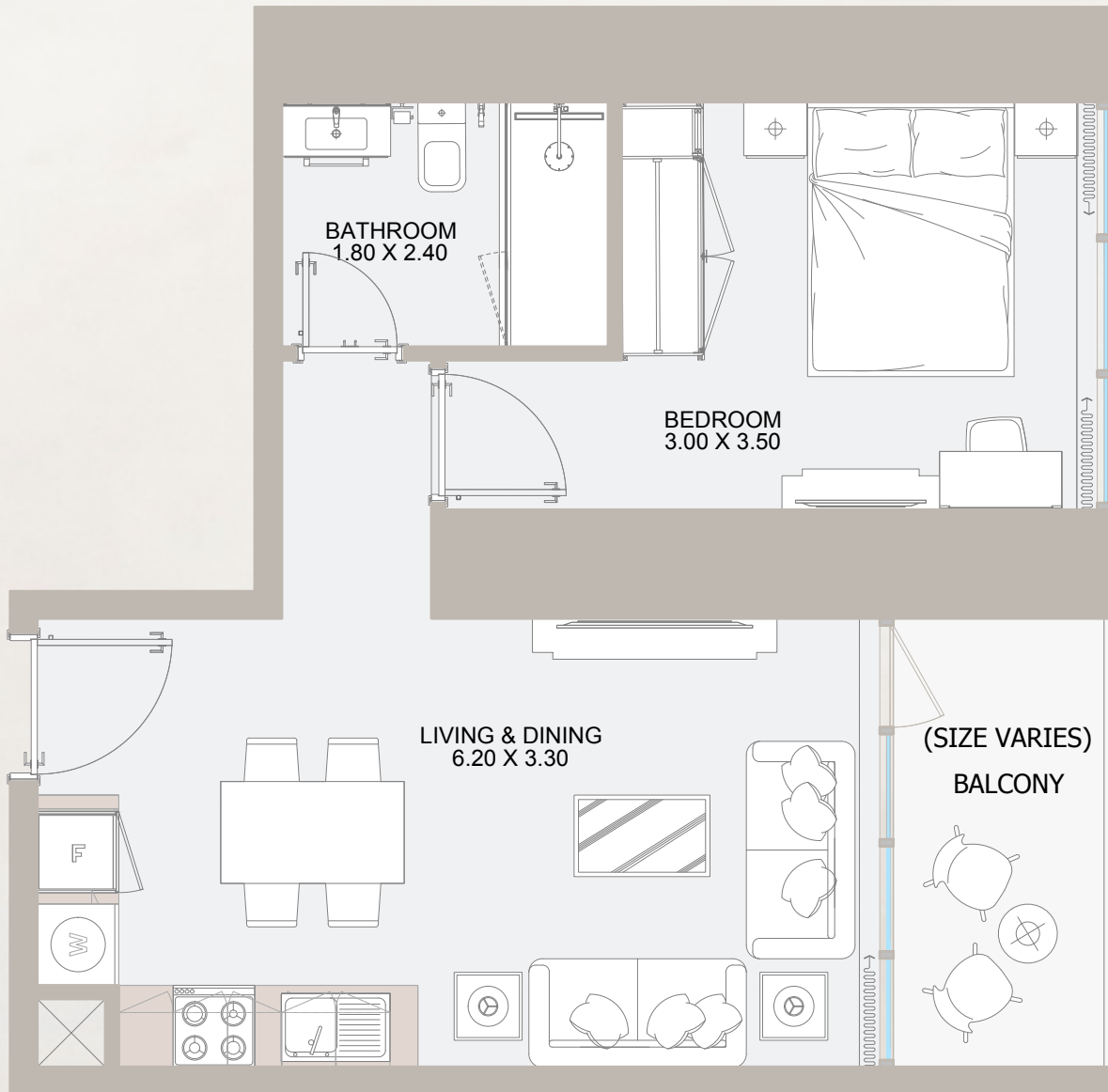
## From 7<sup>th</sup> Floor to 32<sup>nd</sup> Floor

Internal Area	435.5 to 509.7 sq.ft
Outdoor Area	45.8 to 321.3 sq.ft
<b>Total Area</b>	<b>481.3 to 789.42 sq.ft</b>

All drawings and dimensions are approximate. Drawings are not to scale and are subject to change without notice. The developer reserves the right to make revisions. The units are measured at typical floors in the building and columns may vary in size depending on the floor level. The furnishing and accessories shown are for representation only. The availability, length and width of the balcony varies depending on which floor and which orientation the unit is located within the building. There will be slight differences in the internal areas between the same unit types depending on the shaft sizes that go through the units.



# 1B TYPE - C



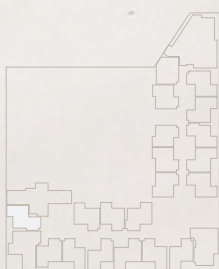
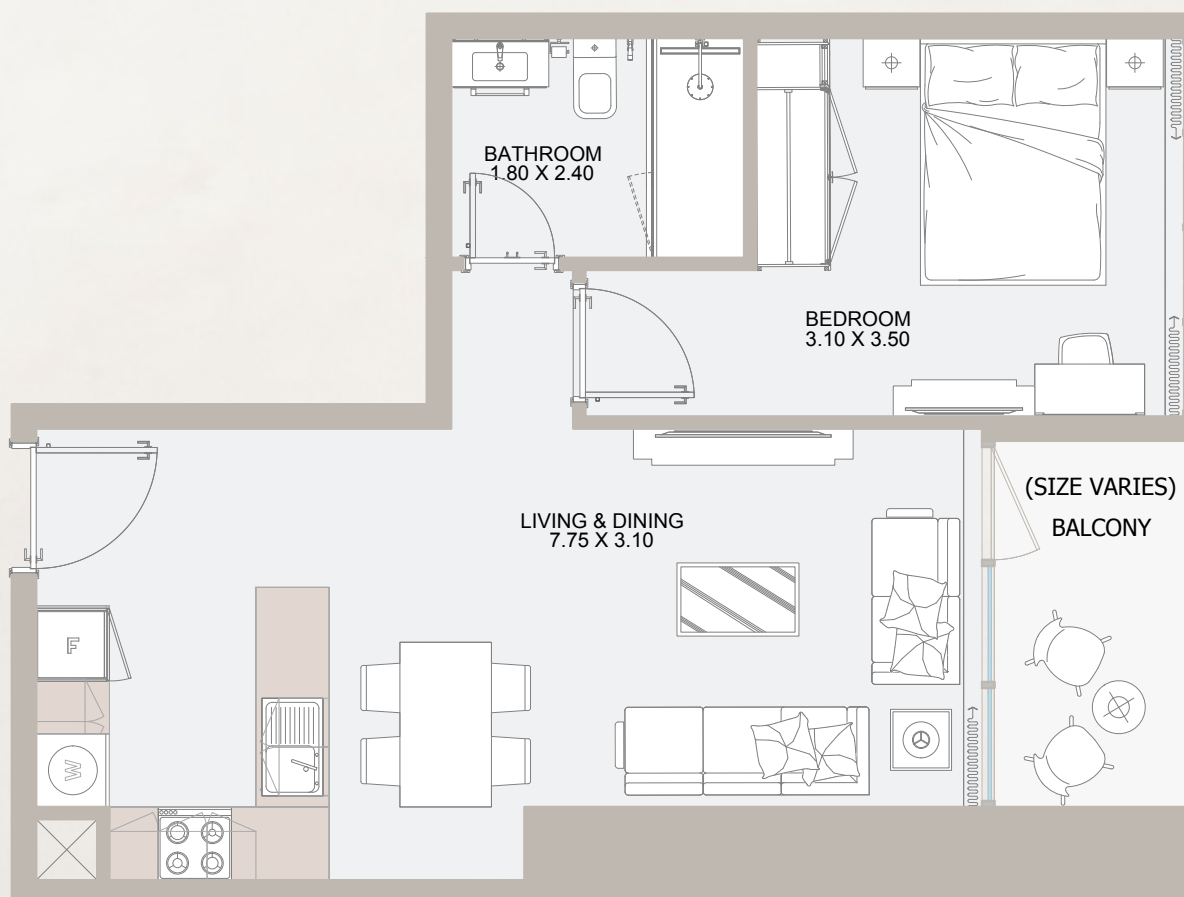
From 7<sup>th</sup> Floor to 32<sup>nd</sup> Floor

Internal Area	468.12 to 523.6 sq.ft
Outdoor Area	47.4 to 315.7 sq.ft
<b>Total Area</b>	<b>515.5 to 813.3 sq.ft</b>

All drawings and dimensions are approximate. Drawings are not to scale and are subject to change without notice. The developer reserves the right to make revisions. The units are measured at typical floors in the building and columns may vary in size depending on the floor level. The furnishing and accessories shown are for representation only. The availability, length and width of the balcony varies depending on which floor and which orientation the unit is located within the building. There will be slight differences in the internal areas between the same unit types depending on the shaft sizes that go through the units.



# 1B TYPE - D



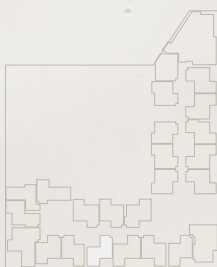
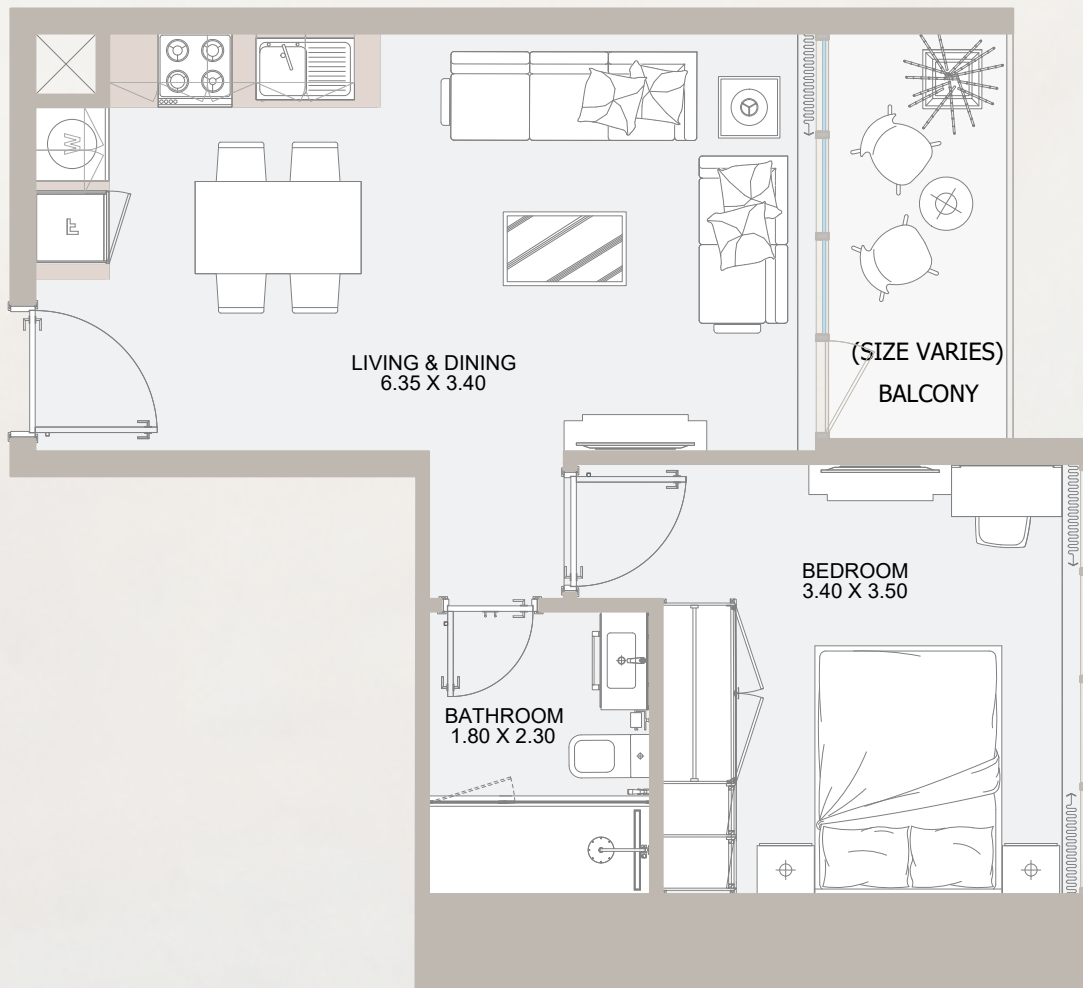
## From 7<sup>th</sup> Floor to 26<sup>th</sup> Floor

Internal Area	528.5 sq.ft
Outdoor Area	61.2 to 71.14 sq.ft
<b>Total Area</b>	<b>589.7 to 599.6 sq.ft</b>

All drawings and dimensions are approximate. Drawings are not to scale and are subject to change without notice. The developer reserves the right to make revisions. The units are measured at typical floors in the building and columns may vary in size depending on the floor level. The furnishing and accessories shown are for representation only. The availability, length and width of the balcony varies depending on which floor and which orientation the unit is located within the building. There will be slight differences in the internal areas between the same unit types depending on the shaft sizes that go through the units.



# 1B TYPE - E



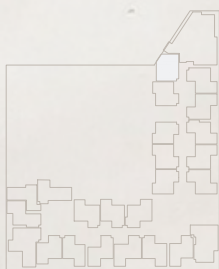
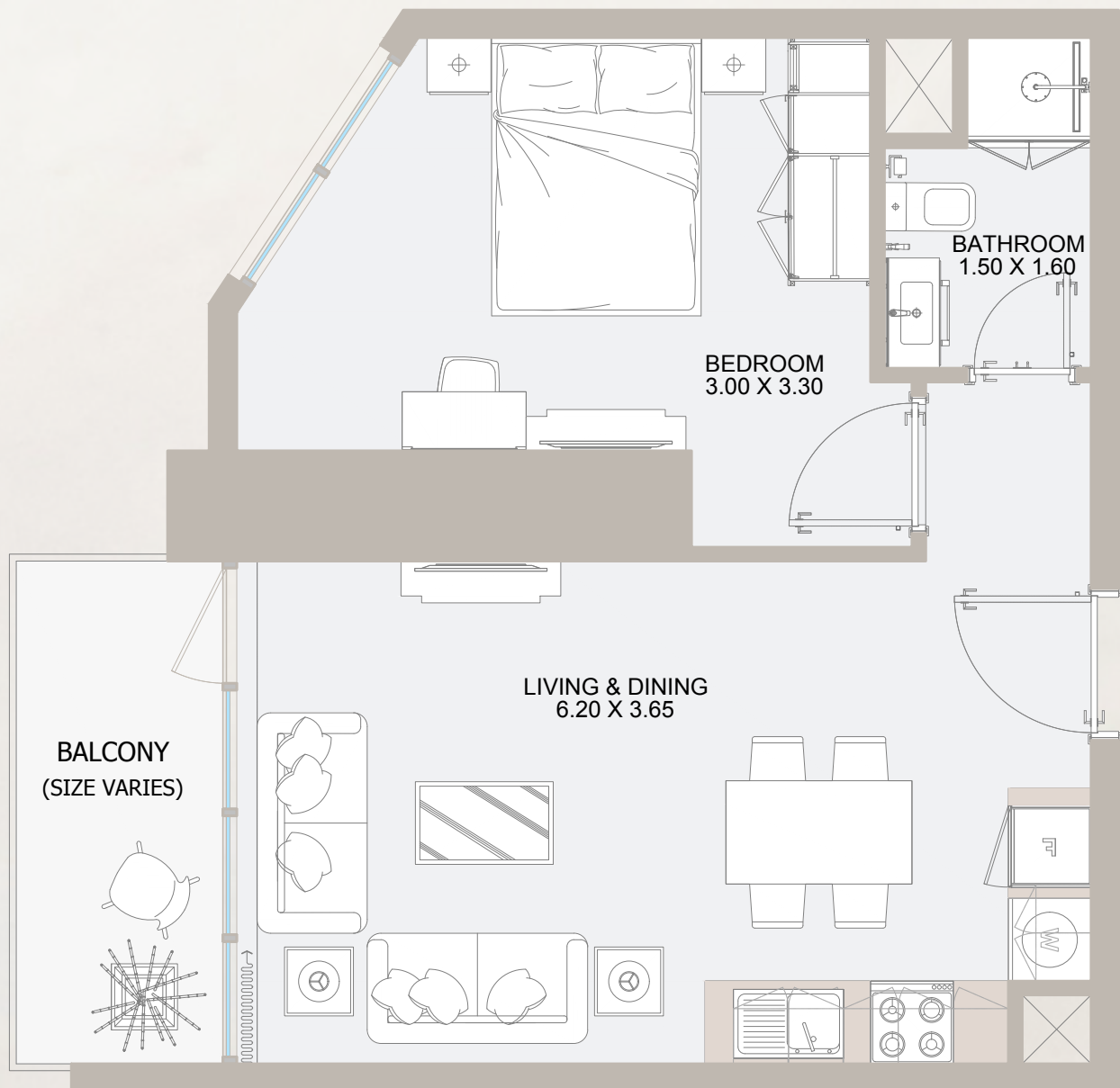
## From 7<sup>th</sup> Floor to 31<sup>th</sup> Floor

Internal Area	478.13 sq.ft
Outdoor Area	55.5 to 87.2 sq.ft
<b>Total Area</b>	<b>533.6 to 565.4 sq.ft</b>

All drawings and dimensions are approximate. Drawings are not to scale and are subject to change without notice. The developer reserves the right to make revisions. The units are measured at typical floors in the building and columns may vary in size depending on the floor level. The furnishing and accessories shown are for representation only. The availability, length and width of the balcony varies depending on which floor and which orientation the unit is located within the building. There will be slight differences in the internal areas between the same unit types depending on the shaft sizes that go through the units.



# 1B TYPE - F



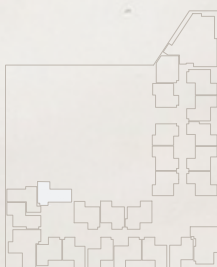
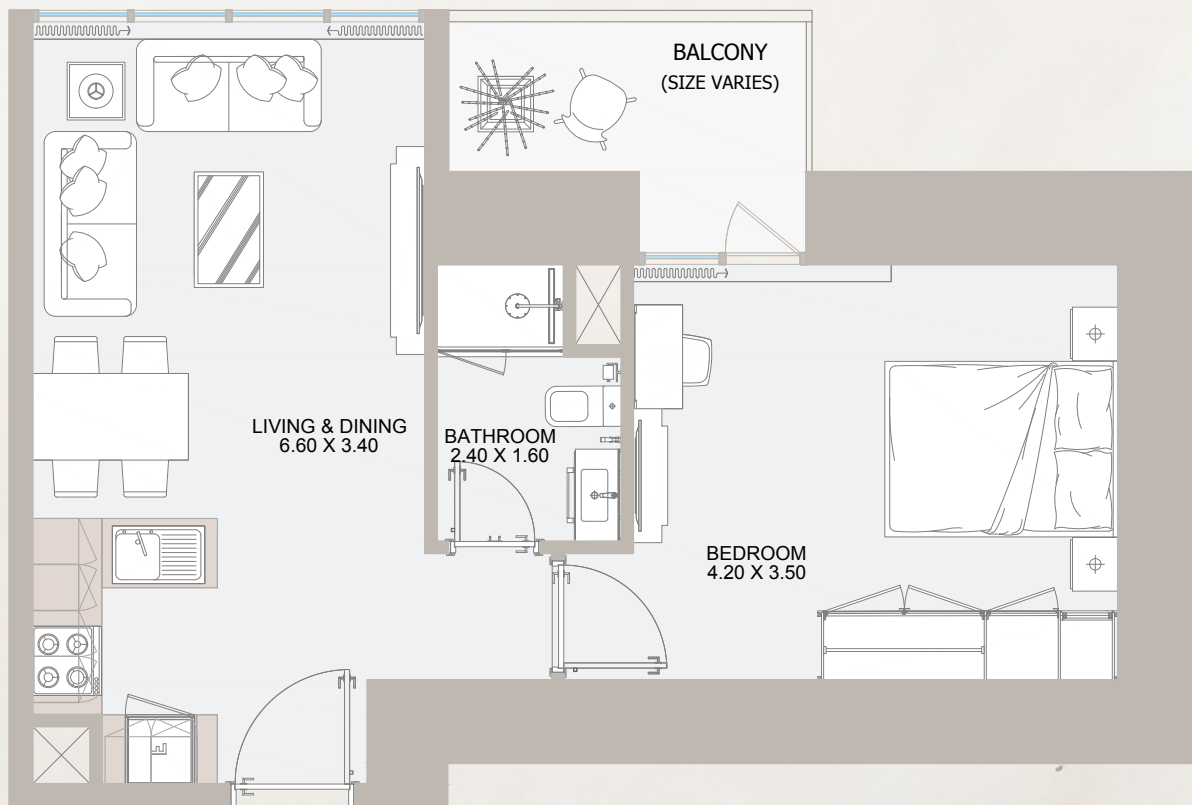
From 7<sup>th</sup> Floor to 31<sup>st</sup> Floor

Internal Area	501.8 sq.ft
Outdoor Area	63.1 to 205 sq.ft
<b>Total Area</b>	<b>565 to 706.8 sq.ft</b>

All drawings and dimensions are approximate. Drawings are not to scale and are subject to change without notice. The developer reserves the right to make revisions. The units are measured at typical floors in the building and columns may vary in size depending on the floor level. The furnishing and accessories shown are for representation only. The availability, length and width of the balcony varies depending on which floor and which orientation the unit is located within the building. There will be slight differences in the internal areas between the same unit types depending on the shaft sizes that go through the units.



# 1B TYPE - G

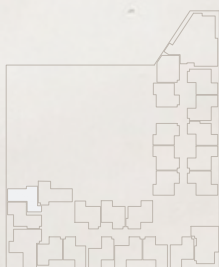
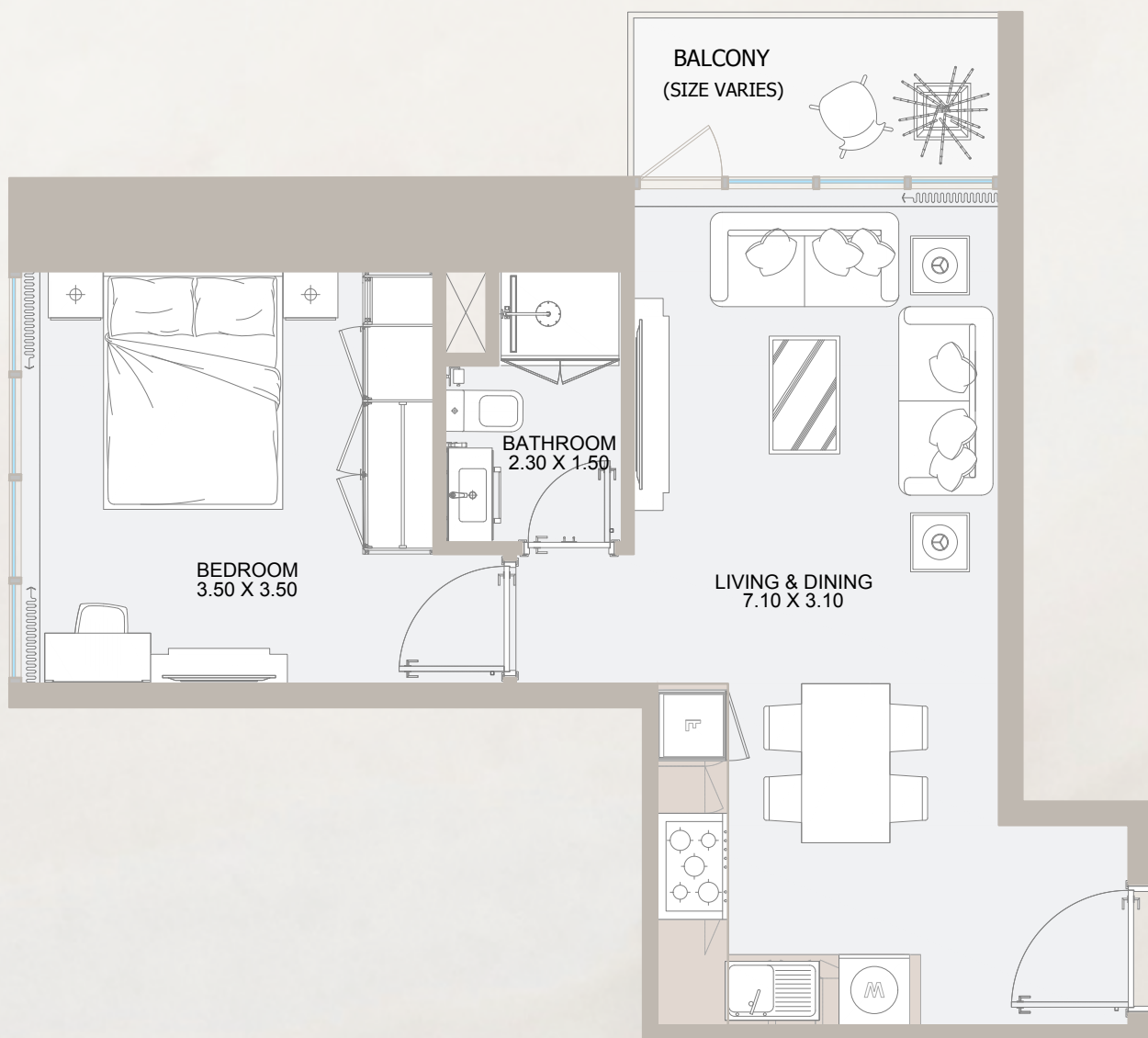


From 27<sup>th</sup> Floor to 31<sup>st</sup> Floor

Internal Area	537.23 sq.ft
Outdoor Area	65.4 to 66.3 sq.ft
<b>Total Area</b>	<b>602.6 to 603.5 sq.ft</b>

All drawings and dimensions are approximate. Drawings are not to scale and are subject to change without notice. The developer reserves the right to make revisions. The units are measured at typical floors in the building and columns may vary in size depending on the floor level. The furnishing and accessories shown are for representation only. The availability, length and width of the balcony varies depending on which floor and which orientation the unit is located within the building. There will be slight differences in the internal areas between the same unit types depending on the shaft sizes that go through the units.

# 1B TYPE - H



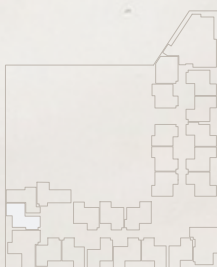
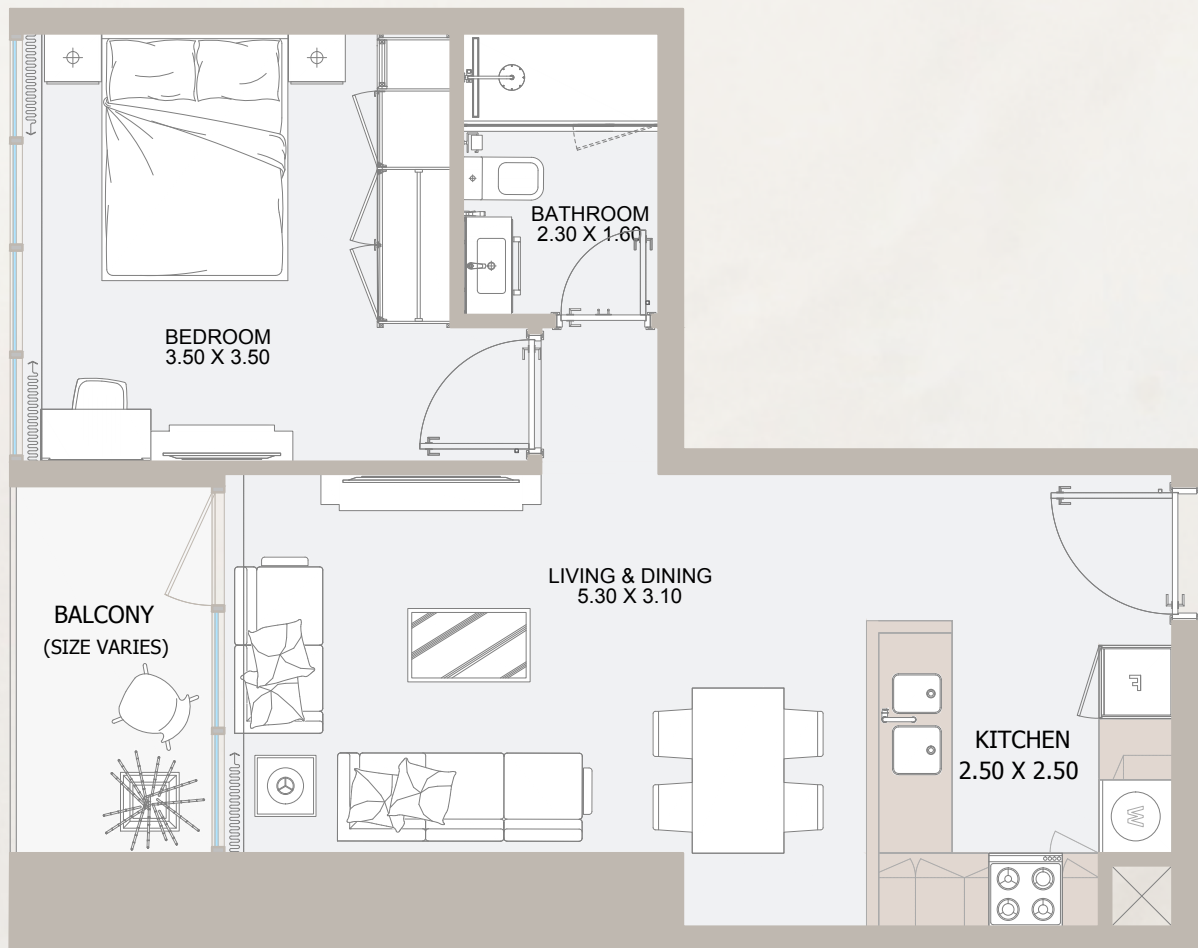
From 27<sup>th</sup> Floor to 31<sup>st</sup> Floor

Internal Area	484.59 sq.ft
Outdoor Area	51.24 sq.ft
<b>Total Area</b>	<b>535.83 sq.ft</b>

All drawings and dimensions are approximate. Drawings are not to scale and are subject to change without notice. The developer reserves the right to make revisions. The units are measured at typical floors in the building and columns may vary in size depending on the floor level. The furnishing and accessories shown are for representation only. The availability, length and width of the balcony varies depending on which floor and which orientation the unit is located within the building. There will be slight differences in the internal areas between the same unit types depending on the shaft sizes that go through the units.



# 1B TYPE - I



From 27<sup>th</sup> Floor to 31<sup>st</sup> Floor

Internal Area	523.77 sq.ft
Outdoor Area	61.24 to 64.04 sq.ft
<b>Total Area</b>	<b>585.01 to 587.81 sq.ft</b>

All drawings and dimensions are approximate. Drawings are not to scale and are subject to change without notice. The developer reserves the right to make revisions. The units are measured at typical floors in the building and columns may vary in size depending on the floor level. The furnishing and accessories shown are for representation only. The availability, length and width of the balcony varies depending on which floor and which orientation the unit is located within the building. There will be slight differences in the internal areas between the same unit types depending on the shaft sizes that go through the units.

# 2B PENTHOUSE TYPE - A



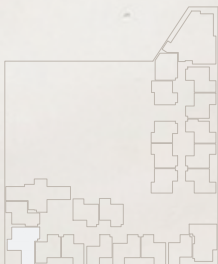
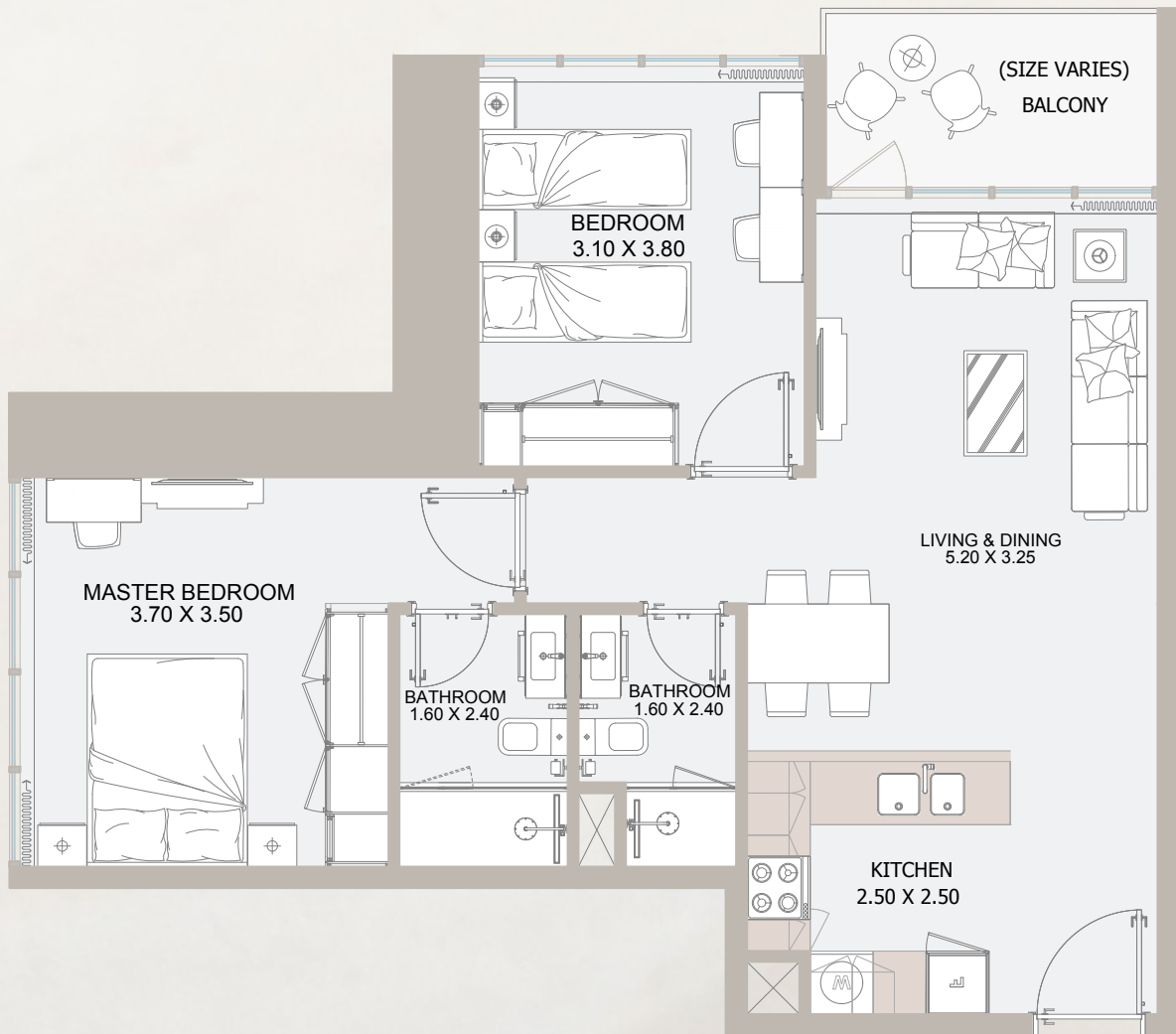
## 33<sup>rd</sup> Floor

Internal Area	781.78 sq.ft
Outdoor Area	1,721.36 sq.ft
<b>Total Area</b>	<b>2,503.14 sq.ft</b>

All drawings and dimensions are approximate. Drawings are not to scale and are subject to change without notice. The developer reserves the right to make revisions. The units are measured at typical floors in the building and columns may vary in size depending on the floor level. The furnishing and accessories shown are for representation only. The availability, length and width of the balcony varies depending on which floor and which orientation the unit is located within the building. There will be slight differences in the internal areas between the same unit types depending on the shaft sizes that go through the units.



# 2B TYPE - A

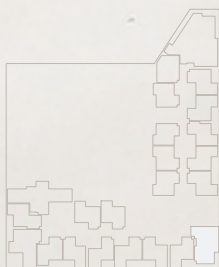
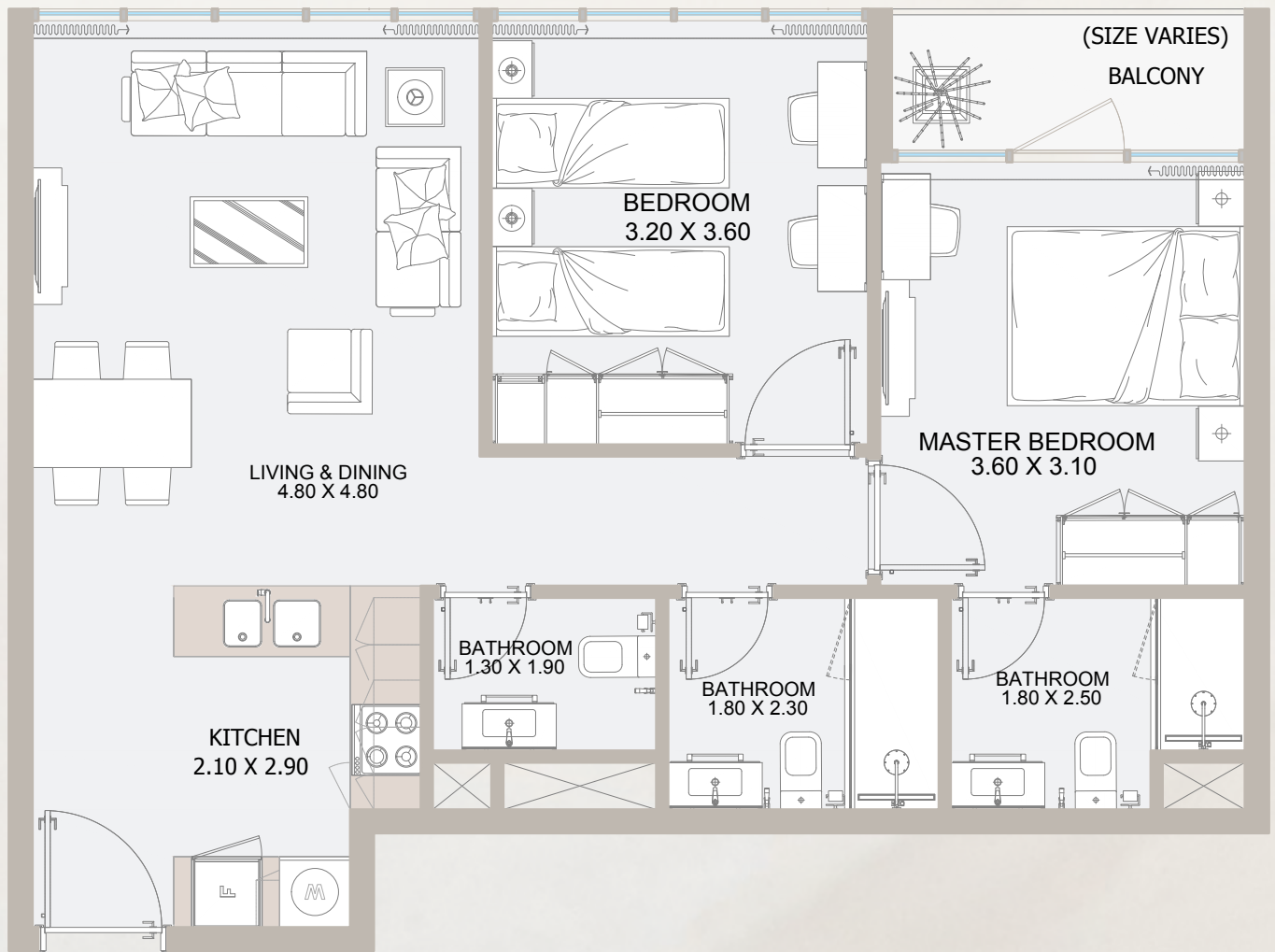


## From 7<sup>th</sup> Floor to 31<sup>st</sup> Floor

Internal Area	782.53 sq.ft
Outdoor Area	63.50 to 74.05 sq.ft
<b>Total Area</b>	<b>846.04 to 856.59 sq.ft</b>

All drawings and dimensions are approximate. Drawings are not to scale and are subject to change without notice. The developer reserves the right to make revisions. The units are measured at typical floors in the building and columns may vary in size depending on the floor level. The furnishing and accessories shown are for representation only. The availability, length and width of the balcony varies depending on which floor and which orientation the unit is located within the building. There will be slight differences in the internal areas between the same unit types depending on the shaft sizes that go through the units.

# 2B TYPE - B



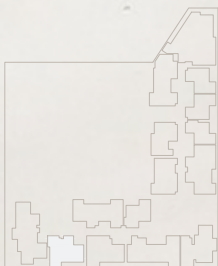
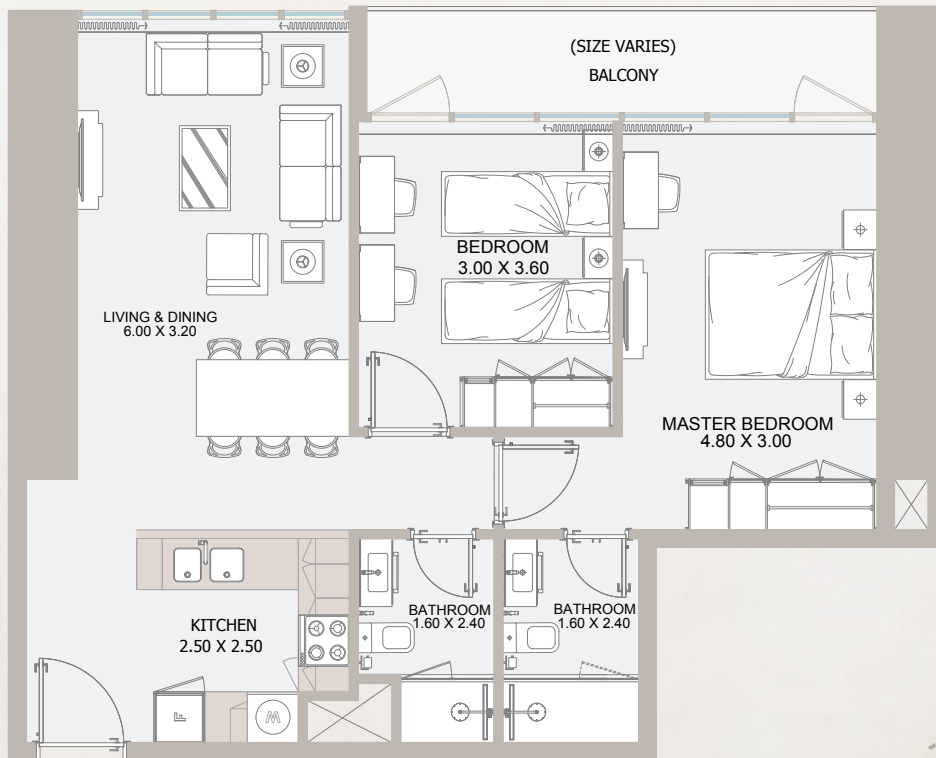
From 7<sup>th</sup> Floor to 33<sup>rd</sup> Floor

Internal Area	669.19 to 770.70 sq.ft
Outdoor Area	42.40 to 94.93 sq.ft
<b>Total Area</b>	<b>715.05 to 857.56 sq.ft</b>

All drawings and dimensions are approximate. Drawings are not to scale and are subject to change without notice. The developer reserves the right to make revisions. The units are measured at typical floors in the building and columns may vary in size depending on the floor level. The furnishing and accessories shown are for representation only. The availability, length and width of the balcony varies depending on which floor and which orientation the unit is located within the building. There will be slight differences in the internal areas between the same unit types depending on the shaft sizes that go through the units.



# 2B TYPE - C

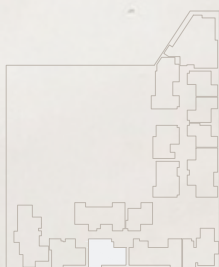
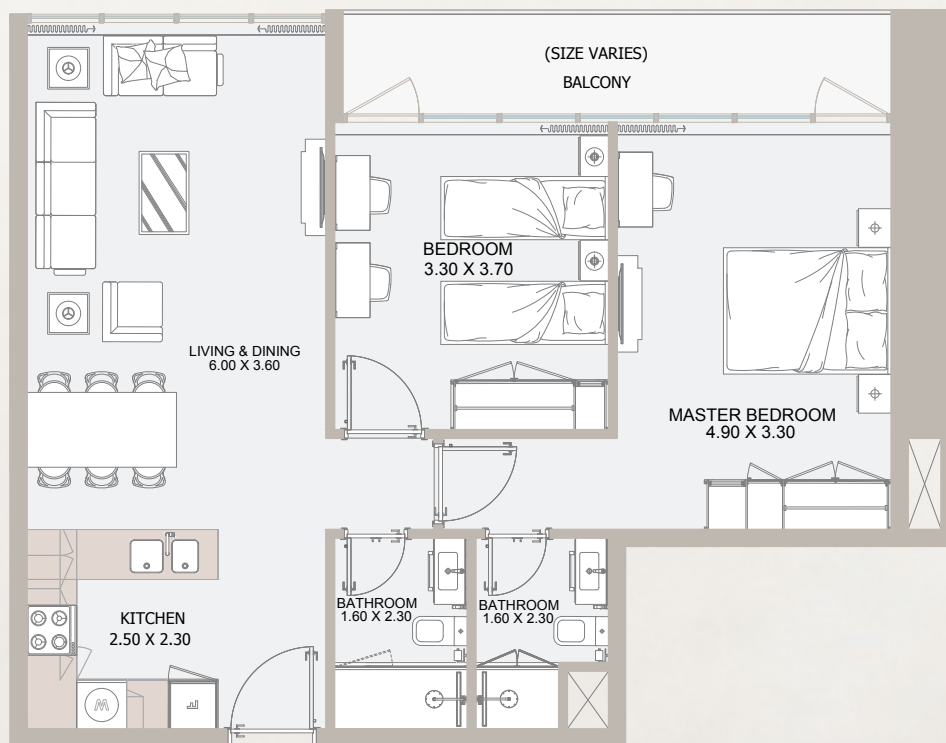


## 32<sup>nd</sup> Floor

Internal Area	784.04 sq.ft
Outdoor Area	87.51 sq.ft
<b>Total Area</b>	<b>871.55 sq.ft</b>

All drawings and dimensions are approximate. Drawings are not to scale and are subject to change without notice. The developer reserves the right to make revisions. The units are measured at typical floors in the building and columns may vary in size depending on the floor level. The furnishing and accessories shown are for representation only. The availability, length and width of the balcony varies depending on which floor and which orientation the unit is located within the building. There will be slight differences in the internal areas between the same unit types depending on the shaft sizes that go through the units.

# 2B TYPE - D



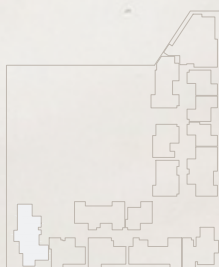
## 32<sup>nd</sup> Floor

Internal Area	843.13 sq.ft
Outdoor Area	95.58 sq.ft
<b>Total Area</b>	<b>9,38.72 sq.ft</b>

All drawings and dimensions are approximate. Drawings are not to scale and are subject to change without notice. The developer reserves the right to make revisions. The units are measured at typical floors in the building and columns may vary in size depending on the floor level. The furnishing and accessories shown are for representation only. The availability, length and width of the balcony varies depending on which floor and which orientation the unit is located within the building. There will be slight differences in the internal areas between the same unit types depending on the shaft sizes that go through the units.



# 3B PENTHOUSE TYPE - A

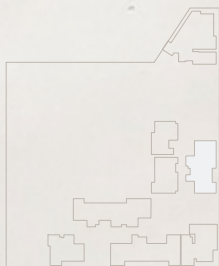
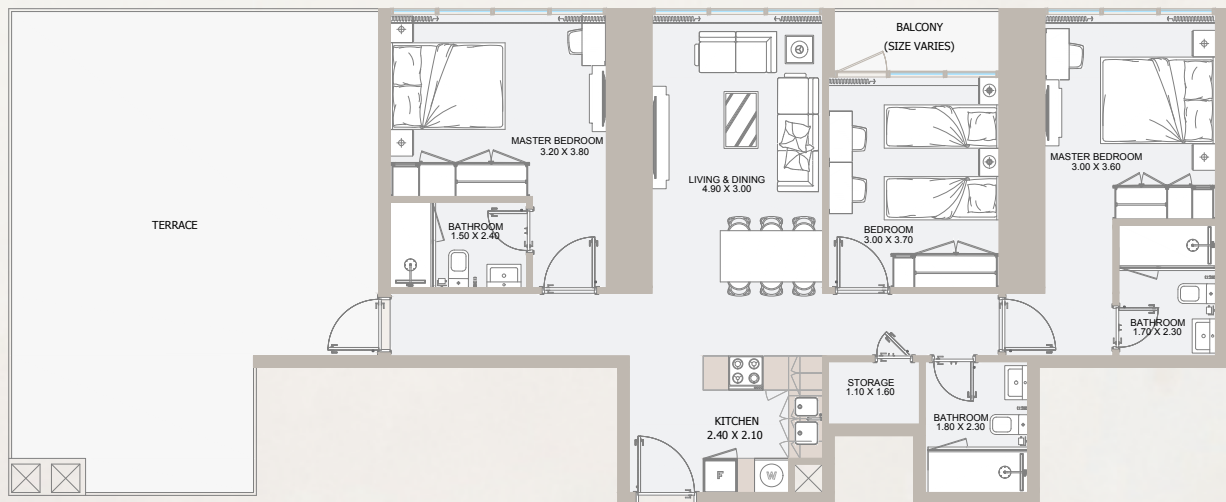


## 32<sup>nd</sup> Floor

Internal Area	1,201.57 sq.ft
Outdoor Area	1,610.28 sq.ft
<b>Total Area</b>	<b>2811.85 sq.ft</b>

All drawings and dimensions are approximate. Drawings are not to scale and are subject to change without notice. The developer reserves the right to make revisions. The units are measured at typical floors in the building and columns may vary in size depending on the floor level. The furnishing and accessories shown are for representation only. The availability, length and width of the balcony varies depending on which floor and which orientation the unit is located within the building. There will be slight differences in the internal areas between the same unit types depending on the shaft sizes that go through the units.

# 3B PENTHOUSE TYPE - B



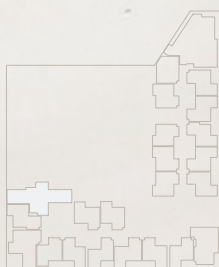
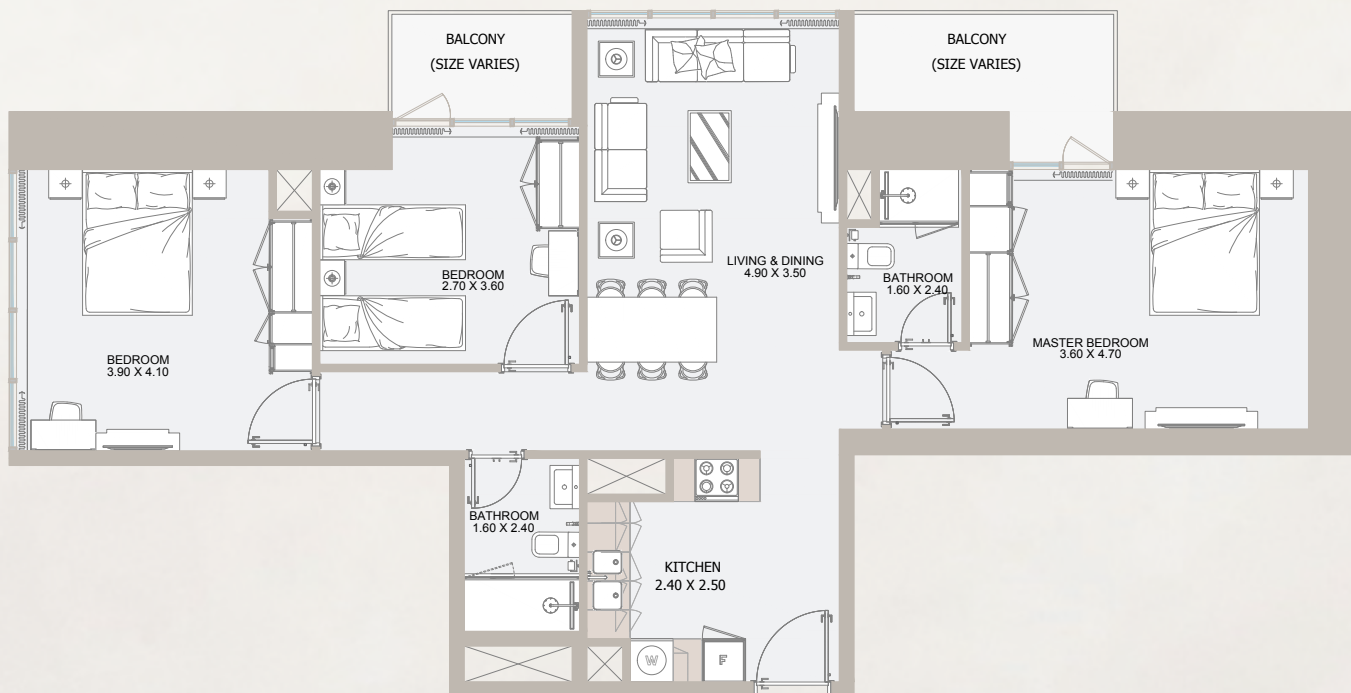
## 33<sup>rd</sup> Floor

Internal Area	1,104 sq.ft
Outdoor Area	588 sq.ft
<b>Total Area</b>	<b>1,692 sq.ft</b>

All drawings and dimensions are approximate. Drawings are not to scale and are subject to change without notice. The developer reserves the right to make revisions. The units are measured at typical floors in the building and columns may vary in size depending on the floor level. The furnishing and accessories shown are for representation only. The availability, length and width of the balcony varies depending on which floor and which orientation the unit is located within the building. There will be slight differences in the internal areas between the same unit types depending on the shaft sizes that go through the units.



# 3B TYPE - A

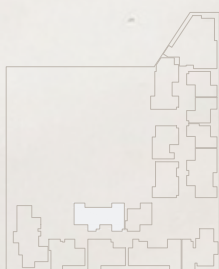
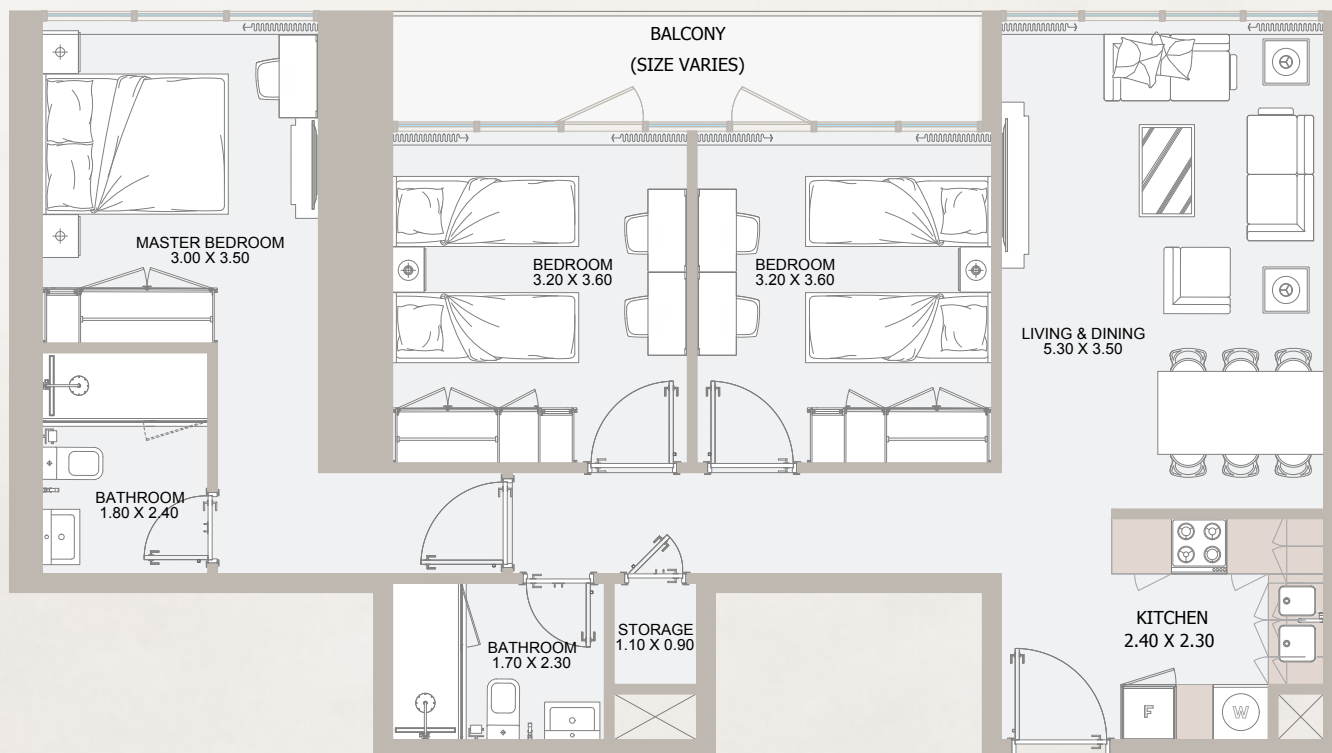


From 7<sup>th</sup> Floor to 26<sup>th</sup> Floor

Internal Area	1,094 sq.ft
Outdoor Area	116 to 548 sq.ft
<b>Total Area</b>	<b>1,209 to 1642 sq.ft</b>

All drawings and dimensions are approximate. Drawings are not to scale and are subject to change without notice. The developer reserves the right to make revisions. The units are measured at typical floors in the building and columns may vary in size depending on the floor level. The furnishing and accessories shown are for representation only. The availability, length and width of the balcony varies depending on which floor and which orientation the unit is located within the building. There will be slight differences in the internal areas between the same unit types depending on the shaft sizes that go through the units.

# 3B TYPE - B

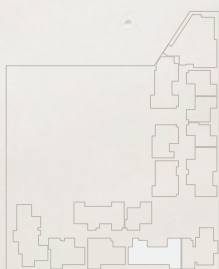
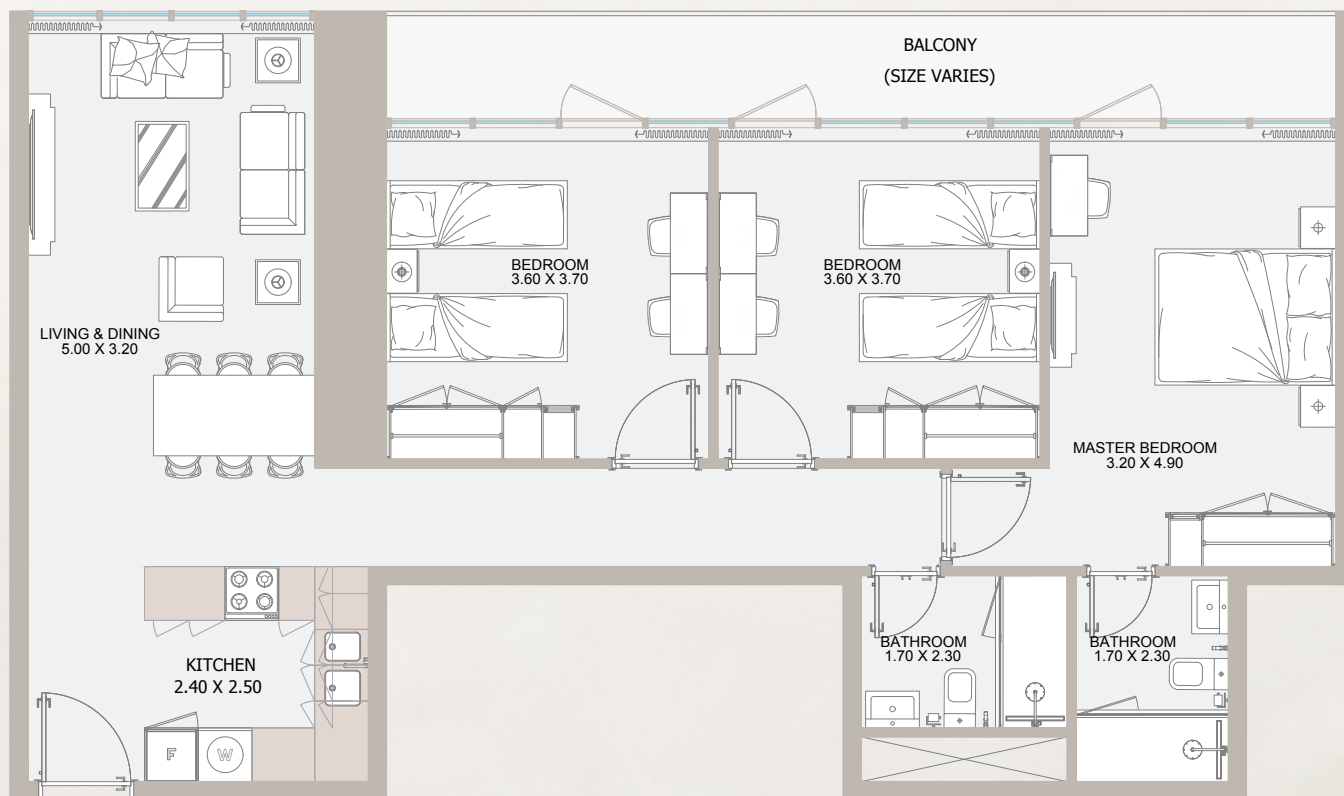


## 32<sup>nd</sup> Floor

Internal Area	1,003 sq.ft
Outdoor Area	87 sq.ft
<b>Total Area</b>	<b>1,090 sq.ft</b>

All drawings and dimensions are approximate. Drawings are not to scale and are subject to change without notice. The developer reserves the right to make revisions. The units are measured at typical floors in the building and columns may vary in size depending on the floor level. The furnishing and accessories shown are for representation only. The availability, length and width of the balcony varies depending on which floor and which orientation the unit is located within the building. There will be slight differences in the internal areas between the same unit types depending on the shaft sizes that go through the units.

# 3B TYPE - c



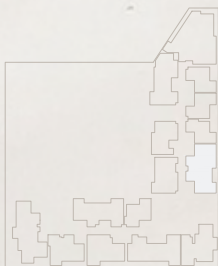
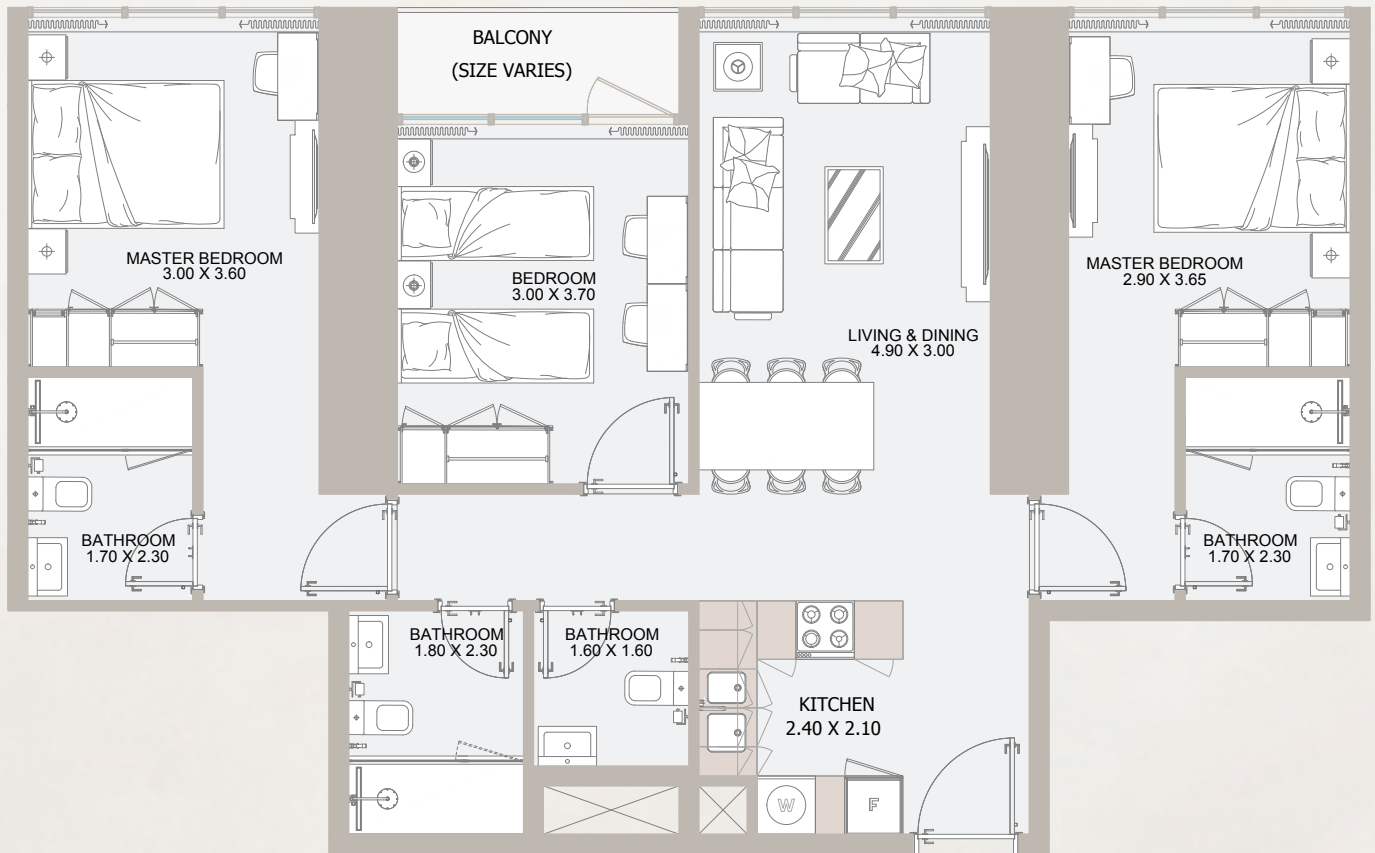
## 32<sup>nd</sup> Floor

Internal Area	1,070 sq.ft
Outdoor Area	144 sq.ft
<b>Total Area</b>	<b>1,214 sq.ft</b>

All drawings and dimensions are approximate. Drawings are not to scale and are subject to change without notice. The developer reserves the right to make revisions. The units are measured at typical floors in the building and columns may vary in size depending on the floor level. The furnishing and accessories shown are for representation only. The availability, length and width of the balcony varies depending on which floor and which orientation the unit is located within the building. There will be slight differences in the internal areas between the same unit types depending on the shaft sizes that go through the units.



# 3B TYPE - D

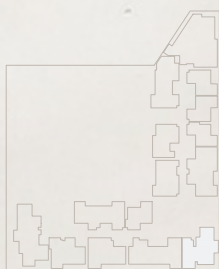
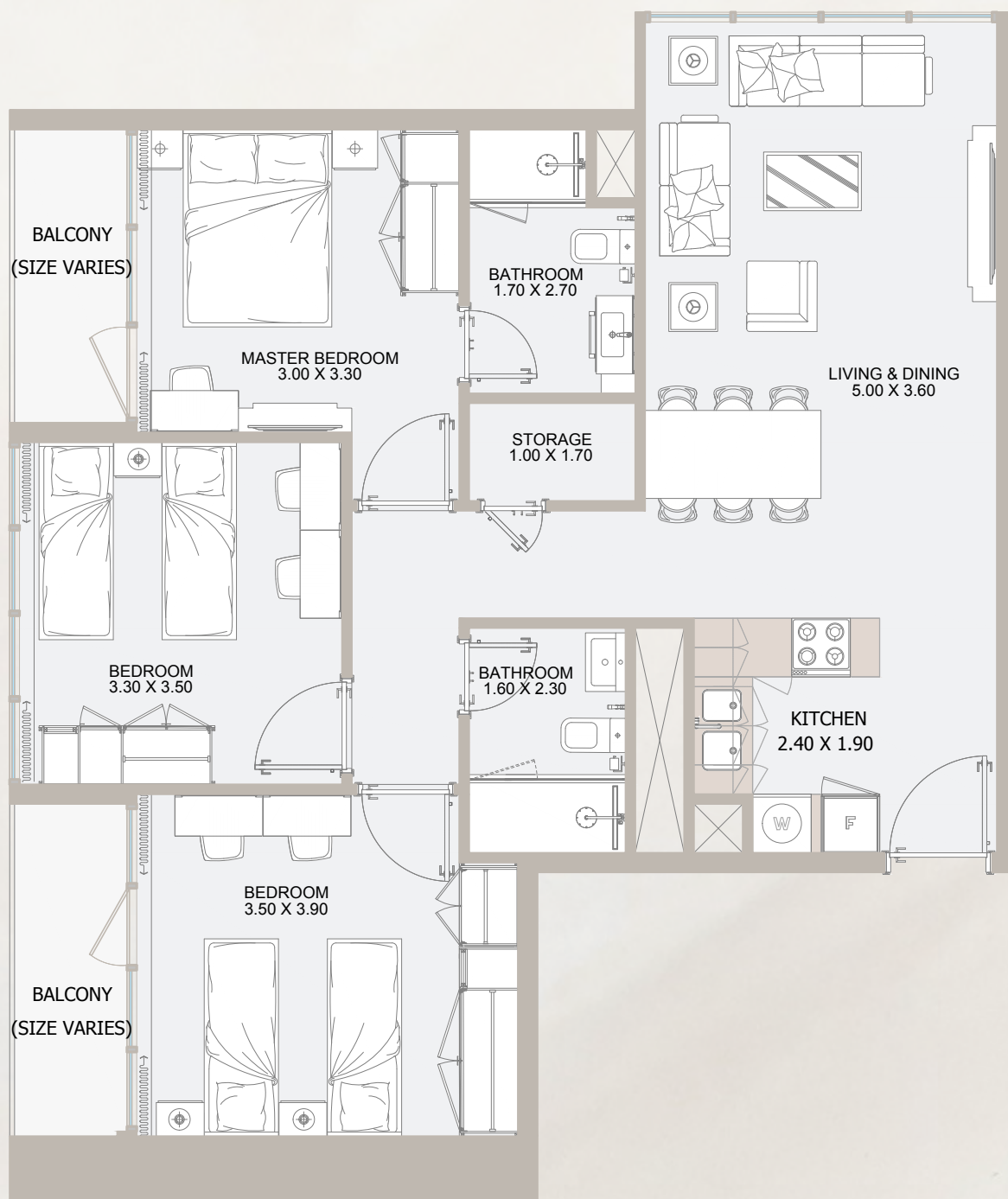


## 32<sup>nd</sup> Floor

Internal Area	1,053 sq.ft
Outdoor Area	42 sq.ft
<b>Total Area</b>	<b>1,096 sq.ft</b>

All drawings and dimensions are approximate. Drawings are not to scale and are subject to change without notice. The developer reserves the right to make revisions. The units are measured at typical floors in the building and columns may vary in size depending on the floor level. The furnishing and accessories shown are for representation only. The availability, length and width of the balcony varies depending on which floor and which orientation the unit is located within the building. There will be slight differences in the internal areas between the same unit types depending on the shaft sizes that go through the units.

# 3B TYPE - E

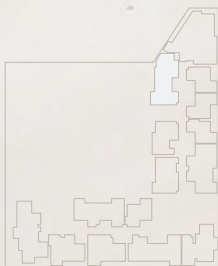
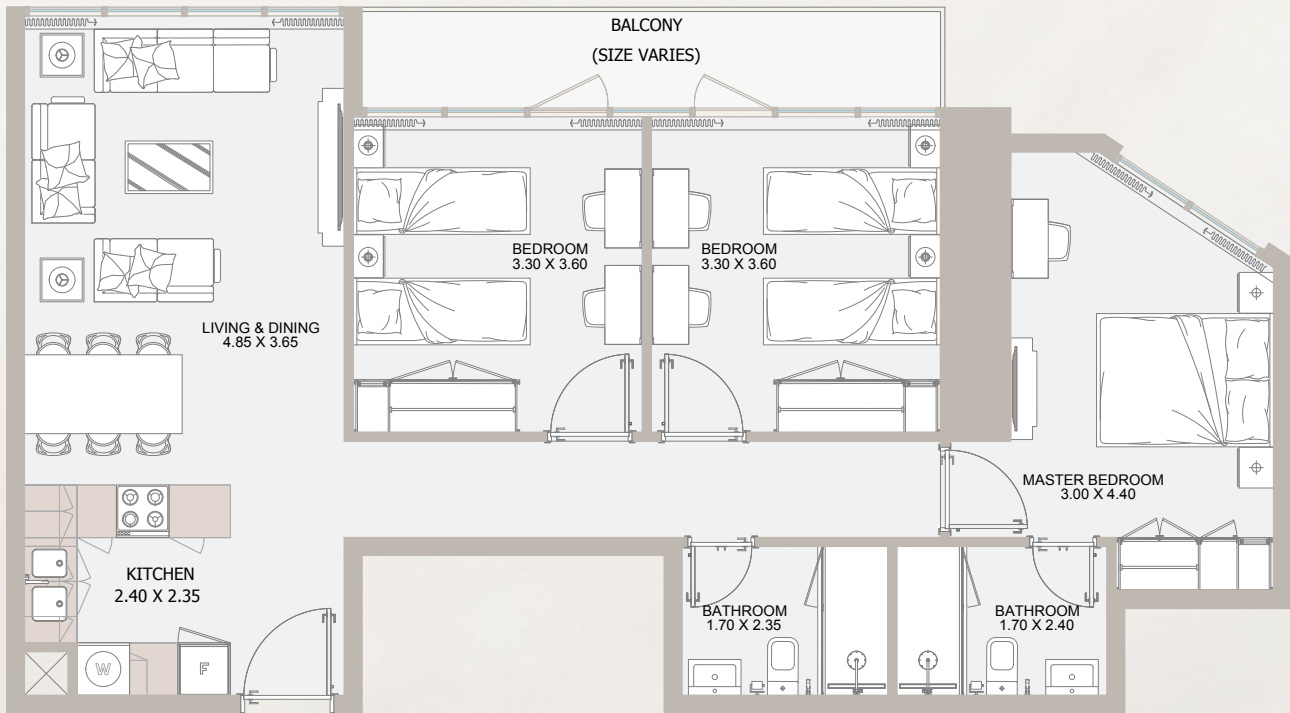


From 32<sup>nd</sup> Floor to 33<sup>rd</sup> Floor

Internal Area	926 sq.ft
Outdoor Area	93 sq.ft
<b>Total Area</b>	<b>1,019 sq.ft</b>

All drawings and dimensions are approximate. Drawings are not to scale and are subject to change without notice. The developer reserves the right to make revisions. The units are measured at typical floors in the building and columns may vary in size depending on the floor level. The furnishing and accessories shown are for representation only. The availability, length and width of the balcony varies depending on which floor and which orientation the unit is located within the building. There will be slight differences in the internal areas between the same unit types depending on the shaft sizes that go through the units.

# 3B TYPE - F



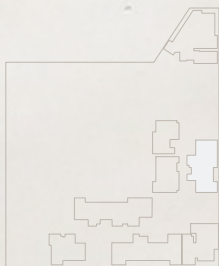
## 32<sup>nd</sup> Floor

Internal Area	985 sq.ft
Outdoor Area	94 sq.ft
<b>Total Area</b>	<b>1,079 sq.ft</b>

All drawings and dimensions are approximate. Drawings are not to scale and are subject to change without notice. The developer reserves the right to make revisions. The units are measured at typical floors in the building and columns may vary in size depending on the floor level. The furnishing and accessories shown are for representation only. The availability, length and width of the balcony varies depending on which floor and which orientation the unit is located within the building. There will be slight differences in the internal areas between the same unit types depending on the shaft sizes that go through the units.



# 4B PENTHOUSE TYPE - A

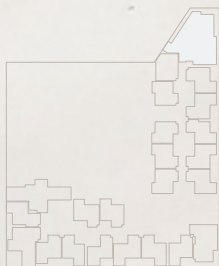


## 33<sup>rd</sup> Floor

Internal Area	1,598.97 sq.ft
Outdoor Area	1,281.98 sq.ft
<b>Total Area</b>	<b>2,880.96 sq.ft</b>

All drawings and dimensions are approximate. Drawings are not to scale and are subject to change without notice. The developer reserves the right to make revisions. The units are measured at typical floors in the building and columns may vary in size depending on the floor level. The furnishing and accessories shown are for representation only. The availability, length and width of the balcony varies depending on which floor and which orientation the unit is located within the building. There will be slight differences in the internal areas between the same unit types depending on the shaft sizes that go through the units.

# 4B TYPE - A

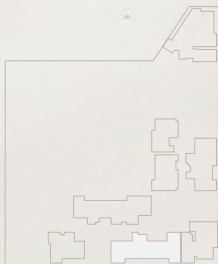
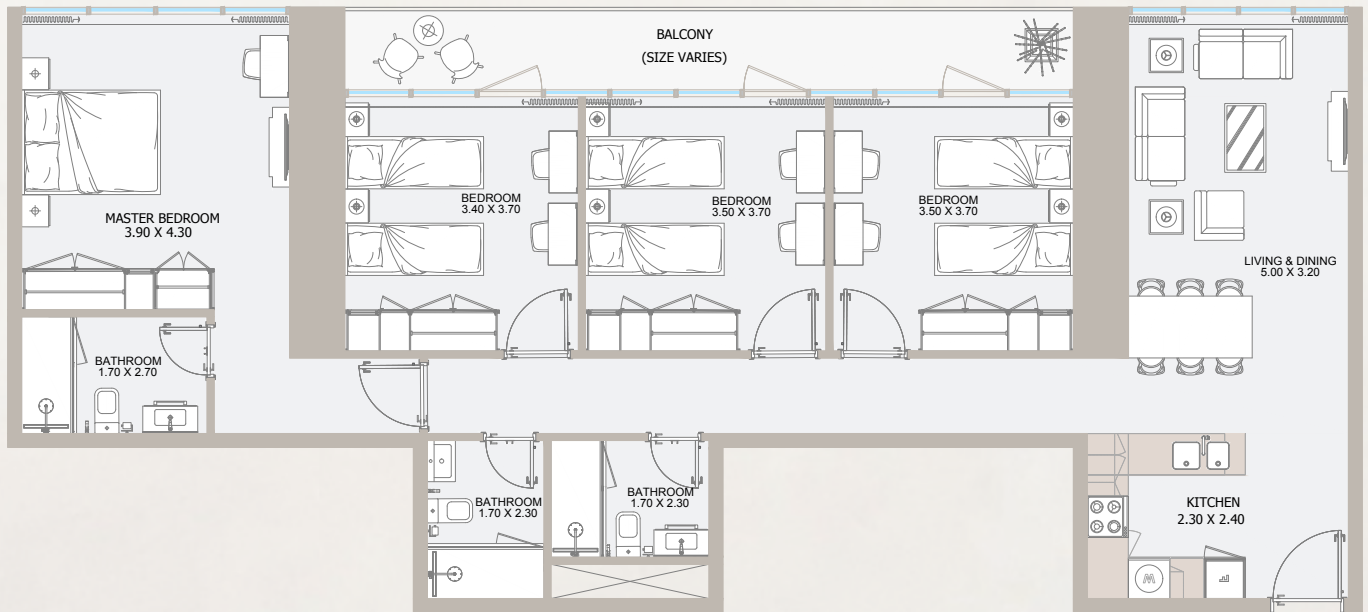


From 7<sup>th</sup> Floor to 32<sup>nd</sup> Floor

Internal Area	1,599.08 sq.ft
Outdoor Area	186.75 to 189.33 sq.ft
<b>Total Area</b>	<b>1,785.84 to 1,788.4 sq.ft</b>

All drawings and dimensions are approximate. Drawings are not to scale and are subject to change without notice. The developer reserves the right to make revisions. The units are measured at typical floors in the building and columns may vary in size depending on the floor level. The furnishing and accessories shown are for representation only. The availability, length and width of the balcony varies depending on which floor and which orientation the unit is located within the building. There will be slight differences in the internal areas between the same unit types depending on the shaft sizes that go through the units.

# 4B TYPE - B



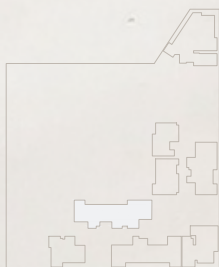
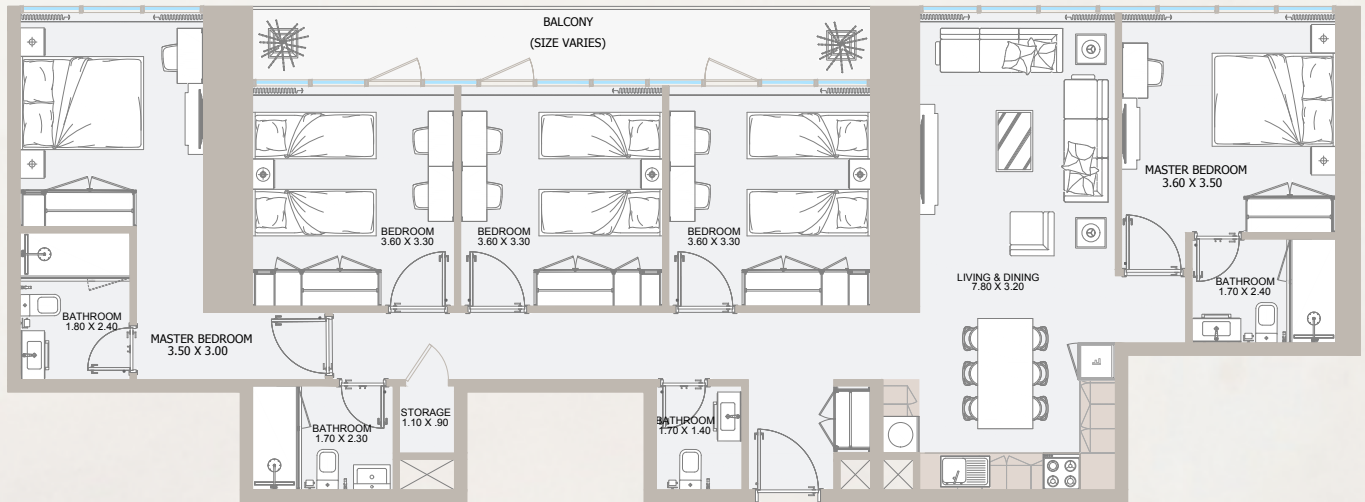
## 33<sup>rd</sup> Floor

Internal Area	1,363.67 sq.ft
Outdoor Area	144.23 sq.ft
<b>Total Area</b>	<b>1,507.91 sq.ft</b>

All drawings and dimensions are approximate. Drawings are not to scale and are subject to change without notice. The developer reserves the right to make revisions. The units are measured at typical floors in the building and columns may vary in size depending on the floor level. The furnishing and accessories shown are for representation only. The availability, length and width of the balcony varies depending on which floor and which orientation the unit is located within the building. There will be slight differences in the internal areas between the same unit types depending on the shaft sizes that go through the units.



# 5B TYPE - A



## 33<sup>rd</sup> Floor

Internal Area	1,506.40 sq.ft
Outdoor Area	137.88 sq.ft
<b>Total Area</b>	<b>1,644.29 sq.ft</b>

All drawings and dimensions are approximate. Drawings are not to scale and are subject to change without notice. The developer reserves the right to make revisions. The units are measured at typical floors in the building and columns may vary in size depending on the floor level. The furnishing and accessories shown are for representation only. The availability, length and width of the balcony varies depending on which floor and which orientation the unit is located within the building. There will be slight differences in the internal areas between the same unit types depending on the shaft sizes that go through the units.



ريپورتاج العقارية  
**Reportage.**  
**Properties**

**Abu Dhabi-UAE | Head Office**

Tamouh Tower  
28<sup>th</sup> Floor, Al Reem Island  
P.O. Box: 111949  
Tollfree: +971 800 77 55 2  
info@reportageuae.com

**Dubai-UAE**

Anantara Business Tower  
3<sup>rd</sup> Floor, Business Bay  
P.O. Box: 27446  
Tollfree: +971 800 77 55 2  
info@reportageuae.com

**Cairo-Egypt**

Building 217,  
North Teseen St.  
New Cairo  
T: +20 12 0008 1190  
info@reportageeg.com

**Istanbul-Türkiye**

Levent, Tekfen Tower  
8<sup>th</sup> Floor, Office 31, Büyükdere St.  
P.O. Box 34394, Şişli  
T: +90 530 774 9595  
info@reportage.com.tr

**Riyadh-KSA**

Building No. 3230  
Al Aflaj St., Al Suwaidi  
P.O. Box 12791  
T: +966 11 215 1110  
info@reportageuae.com

**Moscow-Russia**

Yefremova Street 10s1, k44/  
Bld. Sadovye Kvartaly  
P.O. Box 119048  
T: +7 (936) 777 22 27  
info@reportagerussia.com

---

For more information, visit [reportageuae.com](http://reportageuae.com)  
or call 800 77 55 2 | +971 50 244 1078

---



**Legal Disclaimer:**

The information contained in this brochure is confidential and is for the exclusive use of the recipient. This brochure may not be reproduced, distributed, delivered, or furnished to any person without the prior written approval of Reportage Properties. No representation or warranty (expressed or implied) is made or can be given with respect to the accuracy or completeness of the information herein, or that any future offer of units or apartments in the project will conform to the terms described herein. Nothing in this leaflet should be constructed as financial, legal, tax or regulatory advice. All accessories such as electronics, furniture, white goods, decorative elements and so forth included in this brochure are not part of the standard unit and used for illustration purposes only. All plans, layouts, pictures, renderings, information and details included in this brochure are indicative only and may change at any time up to the final 'as built' status in accordance with final designs of the project and regulatory approvals and planning permissions.



**R.**