

F F F F F F F
L L L L L L L
O O O O O O O
O O O O O O O
R R R R R R R
P P P P P P P
L L L L L L L
A A A A A A A
N N N N N N N
S S S S S S S
F L O O R P L A N S

URBAN

URBAN - PARK RESIDENCES

STUDIO — MODEL A UNIT TYPE — 04/07

INTERNAL AREA 353.49 SQ. FT

BALCONY 64.91 SQ. FT

TOTAL AREA 418.40 SQ. FT

KEY PLAN



URBAN - PARK RESIDENCES

STUDIO — MODEL B UNIT TYPE — 02/09

INTERNAL AREA 363.29 SQ. FT

BALCONY 72.33 SQ. FT

TOTAL AREA 435.62 SQ. FT

KEY PLAN



URBAN - PARK RESIDENCES

ONE BEDROOM — MODEL A UNIT TYPE — 05/06

INTERNAL AREA 618.28 SQ. FT

BALCONY 135.63 SQ. FT

TOTAL AREA 753.91 SQ. FT

KEY PLAN



URBAN - PARK RESIDENCES

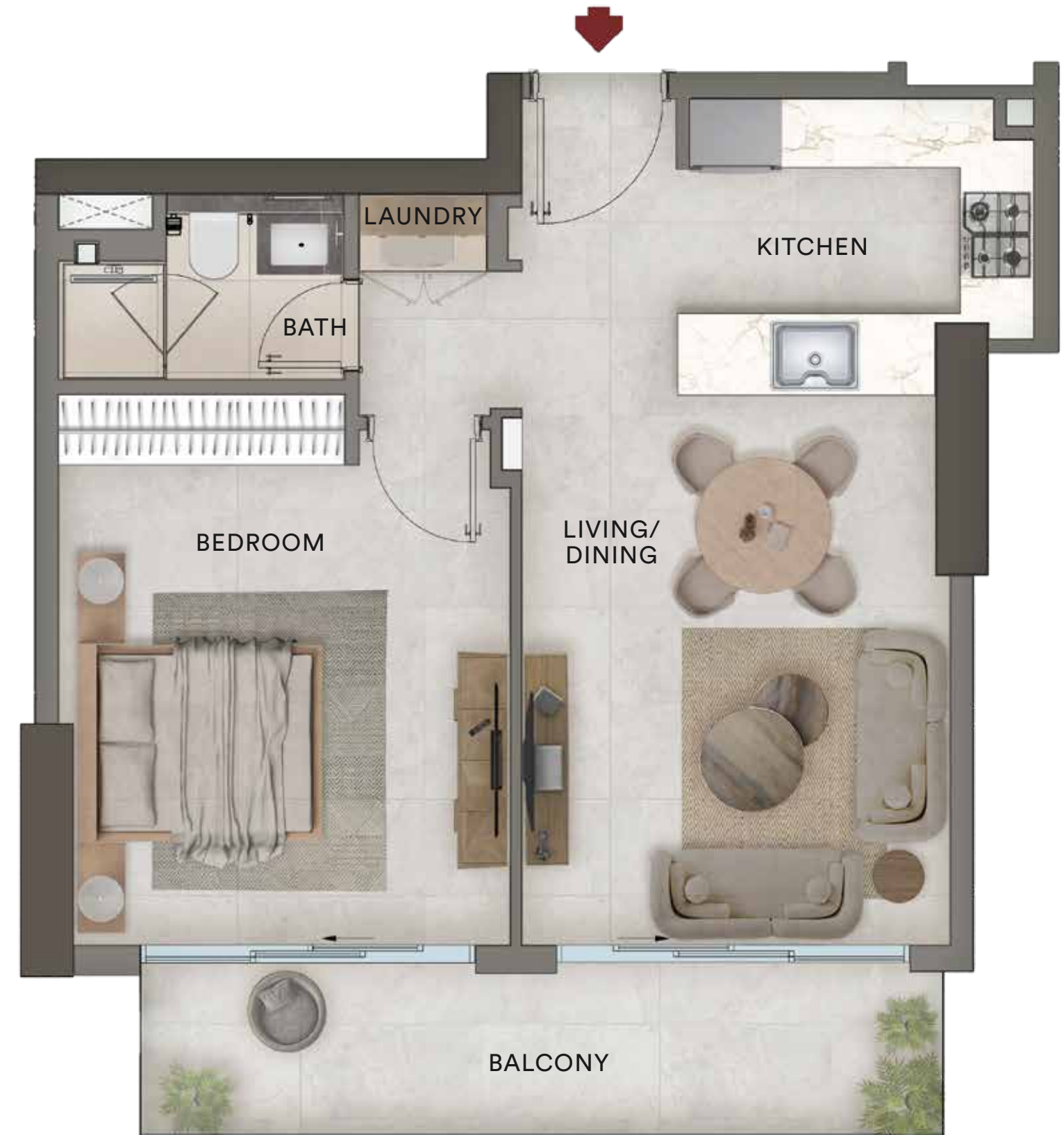
ONE BEDROOM — MODEL B UNIT TYPE — I2

INTERNAL AREA 570.49 SQ. FT

BALCONY 160.17 SQ. FT

TOTAL AREA 730.66 SQ. FT

KEY PLAN



URBAN - PARK RESIDENCES

ONE BEDROOM — MODEL C UNIT TYPE — 13/11

INTERNAL AREA 600.20 SQ. FT

BALCONY 132.93 SQ. FT

TOTAL AREA 733.13 SQ. FT

KEY PLAN



URBAN - PARK RESIDENCES

TWO BEDROOM UNIT TYPE — 01/03/08/10

INTERNAL AREA 1053.37 SQ. FT

BALCONY 113.99 SQ. FT

TOTAL AREA 1167.68 SQ. FT

KEY PLAN

