

# SEASCAPE

RASHID YACHTS & MARINA

BUILDING 3

FLOOR PLAN

EMAAR

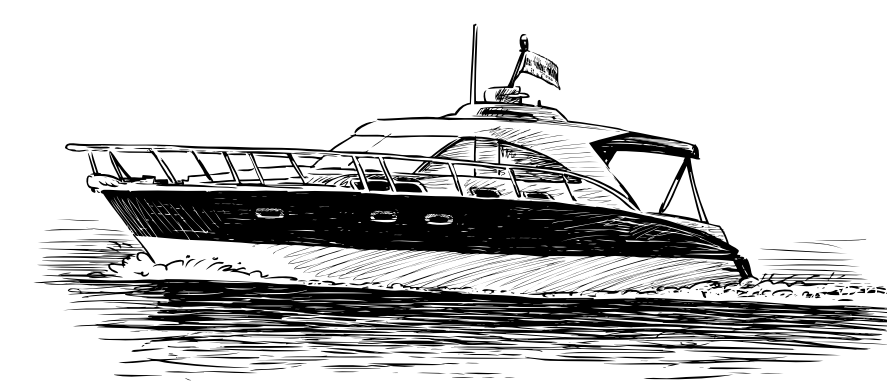


# SEASCAPE

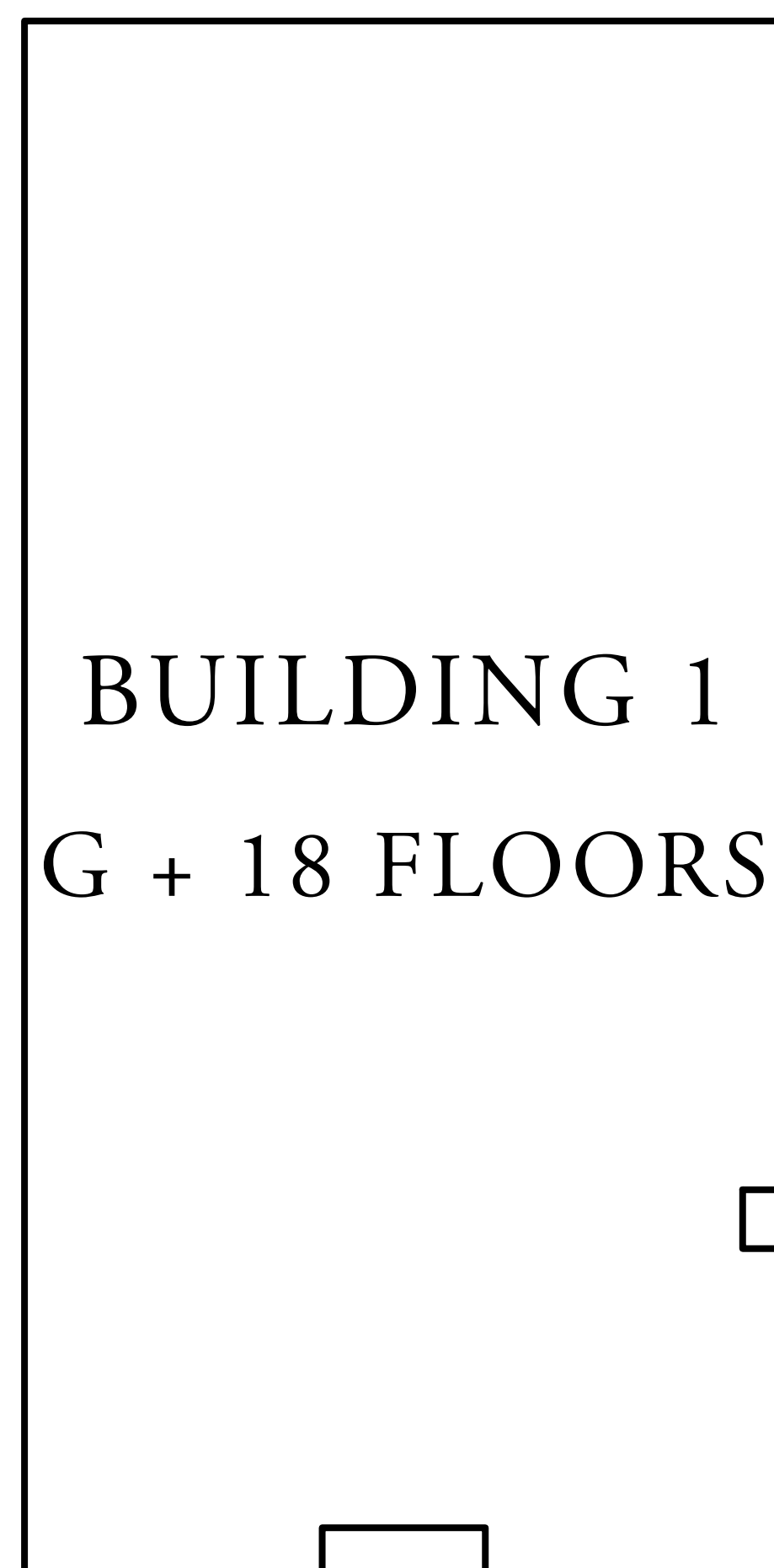
RASHID YACHTS & MARINA



THE CANAL POOL



MARINA & PROMENADE



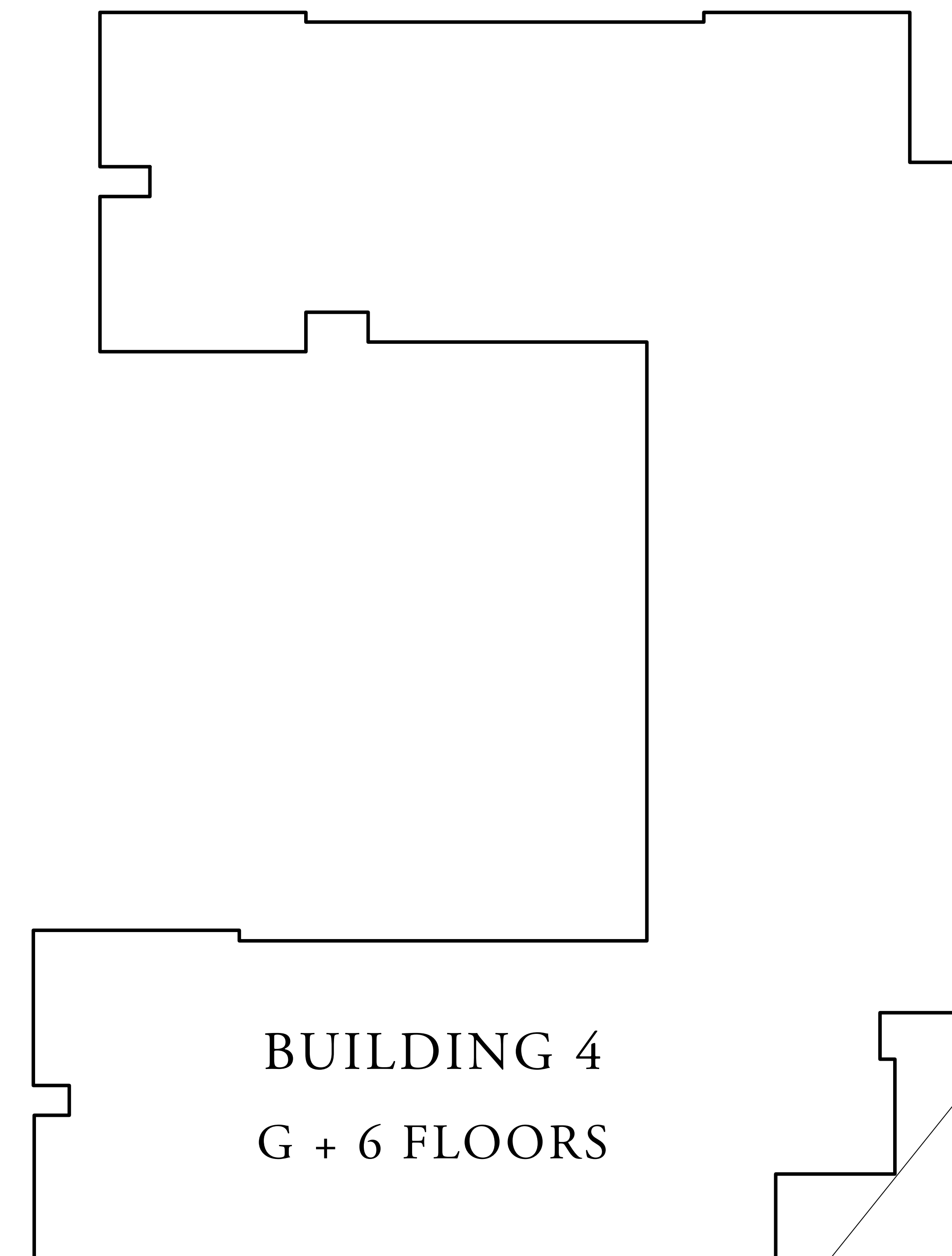
BUILDING 1  
G + 18 FLOORS



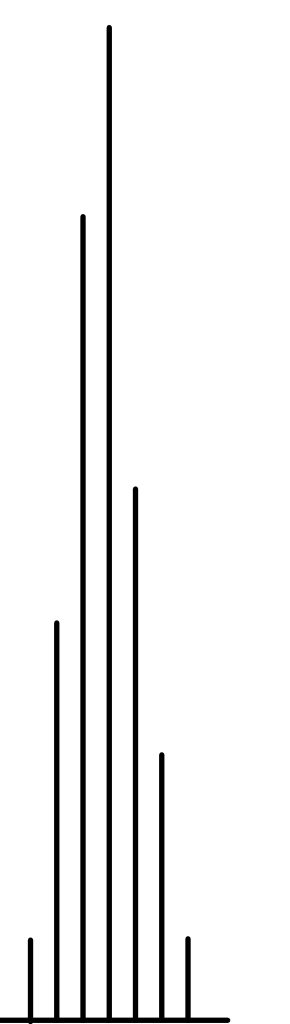
BUILDING 2  
G + 7 FLOORS



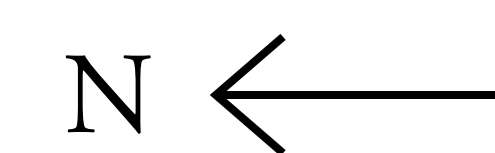
BUILDING 3  
G + 8 FLOORS



BUILDING 4  
G + 6 FLOORS



BURJ KHALIFA



FLOOR PLAN 1. All dimensions are in imperial and metric, and measured from finish to finish excluding construction tolerances. 2. All materials, dimensions, and drawings are approximate only. 3. Information is subject to change without notice, at developer's absolute discretion. 4. Actual area may vary from the stated area. 5. Drawings not to scale. 6. All images used are for illustrative purposes only and do not represent the actual size, features, specifications, fittings, and furnishings. 7. The developer reserves the right to make revisions / alterations, at it's absolute discretion, without any liability whatsoever.

EMAAR



# SEASCAPE

RASHID YACHTS & MARINA

BUILDING 3

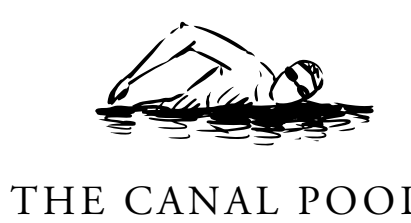
## 1 BEDROOM TYPE 2B

LEVEL 01 - 08

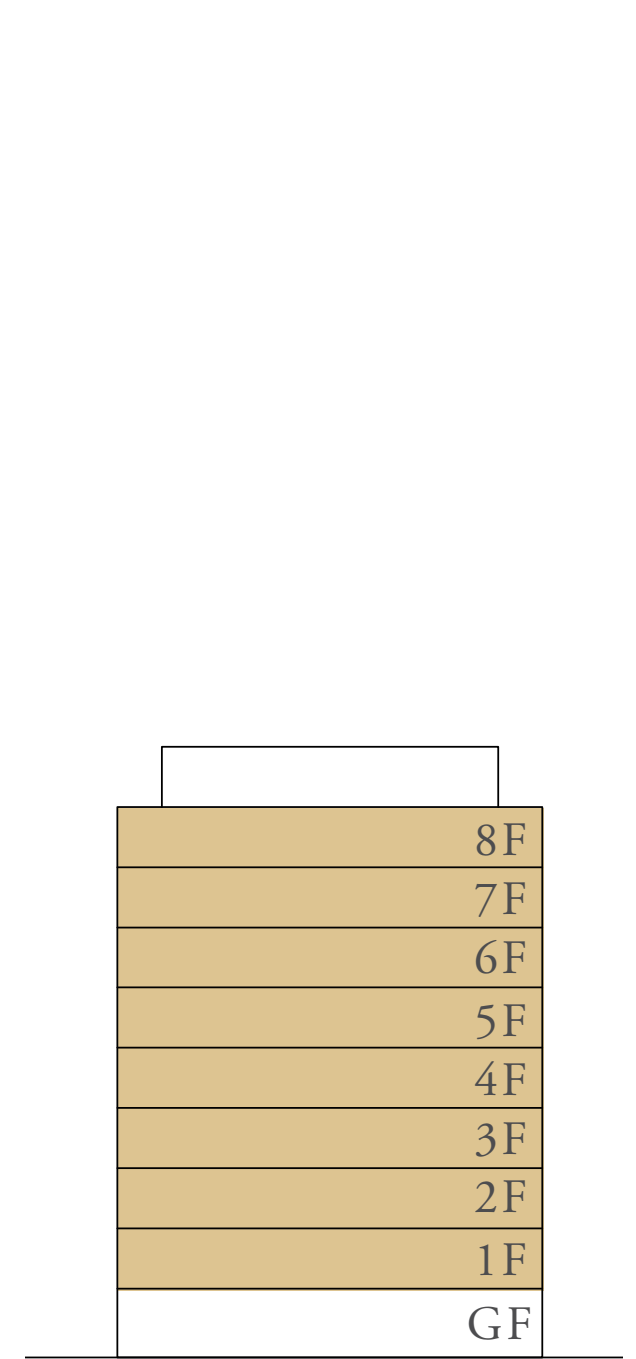
UNIT 04

SUITE AREA	706.22 SQ.FT.	65.61 SQ.M.
BALCONY AREA	105.27 SQ.FT.	9.78 SQ.M.
TOTAL AREA	811.49 SQ.FT.	75.39 SQ.M.

KEY PLAN



KEY SECTION



N ←



FLOOR PLAN 1. All dimensions are in imperial and metric, and measured from finish to finish excluding construction tolerances. 2. All materials, dimensions, and drawings are approximate only. 3. Information is subject to change without notice, at developer's absolute discretion. 4. Actual area may vary from the stated area. 5. Drawings not to scale. 6. All images used are for illustrative purposes only and do not represent the actual size, features, specifications, fittings, and furnishings. 7. The developer reserves the right to make revisions / alterations, at it's absolute discretion, without any liability whatsoever.



# SEASCAPE

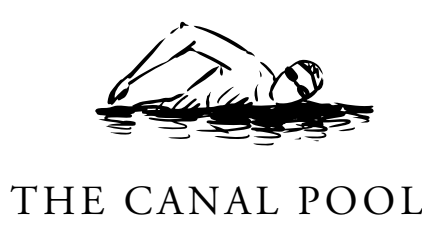
RASHID YACHTS & MARINA

## BUILDING 3 2 BEDROOM TYPE 1A

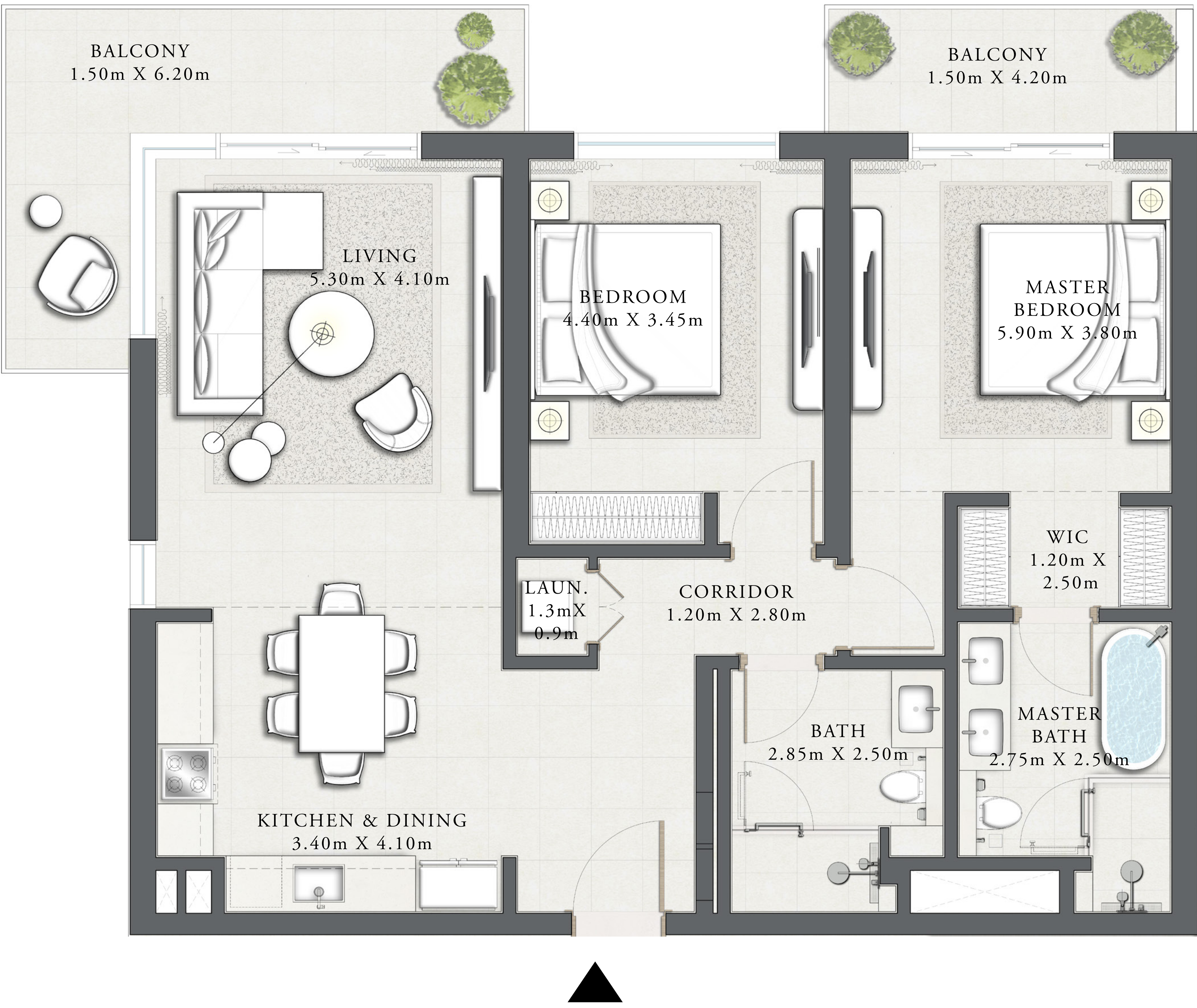
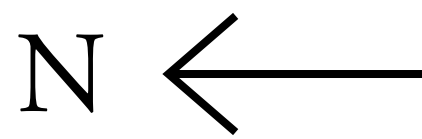
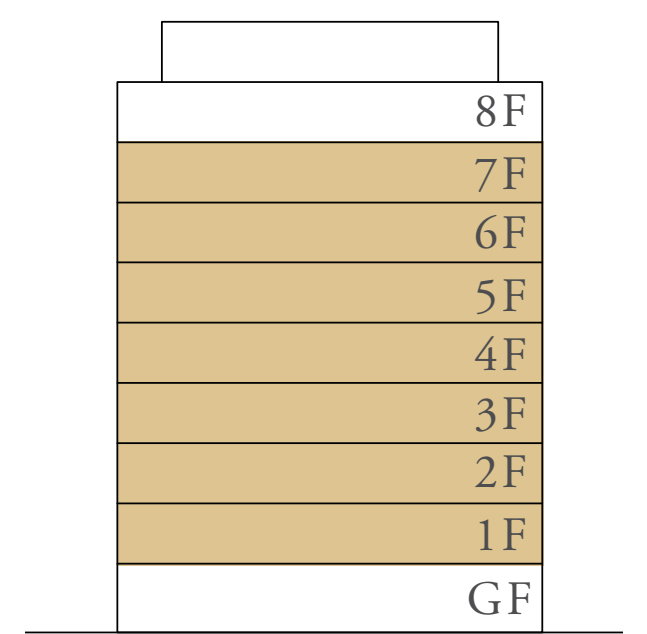
LEVEL 01 - 07    UNIT 01 & 05

SUITE AREA	1,164.65 SQ.FT.	108.20 SQ.M.
BALCONY AREA	225.72 SQ.FT.	20.97 SQ.M.
TOTAL AREA	1,390.37 SQ.FT.	129.17 SQ.M.

KEY PLAN



KEY SECTION



FLOOR PLAN 1. All dimensions are in imperial and metric, and measured from finish to finish excluding construction tolerances. 2. All materials, dimensions, and drawings are approximate only. 3. Information is subject to change without notice, at developer's absolute discretion. 4. Actual area may vary from the stated area. 5. Drawings not to scale. 6. All images used are for illustrative purposes only and do not represent the actual size, features, specifications, fittings, and furnishings. 7. The developer reserves the right to make revisions / alterations, at it's absolute discretion, without any liability whatsoever.



# SEASCAPE

RASHID YACHTS & MARINA

BUILDING 3

## 2 BEDROOM TYPE 1B

LEVEL 08

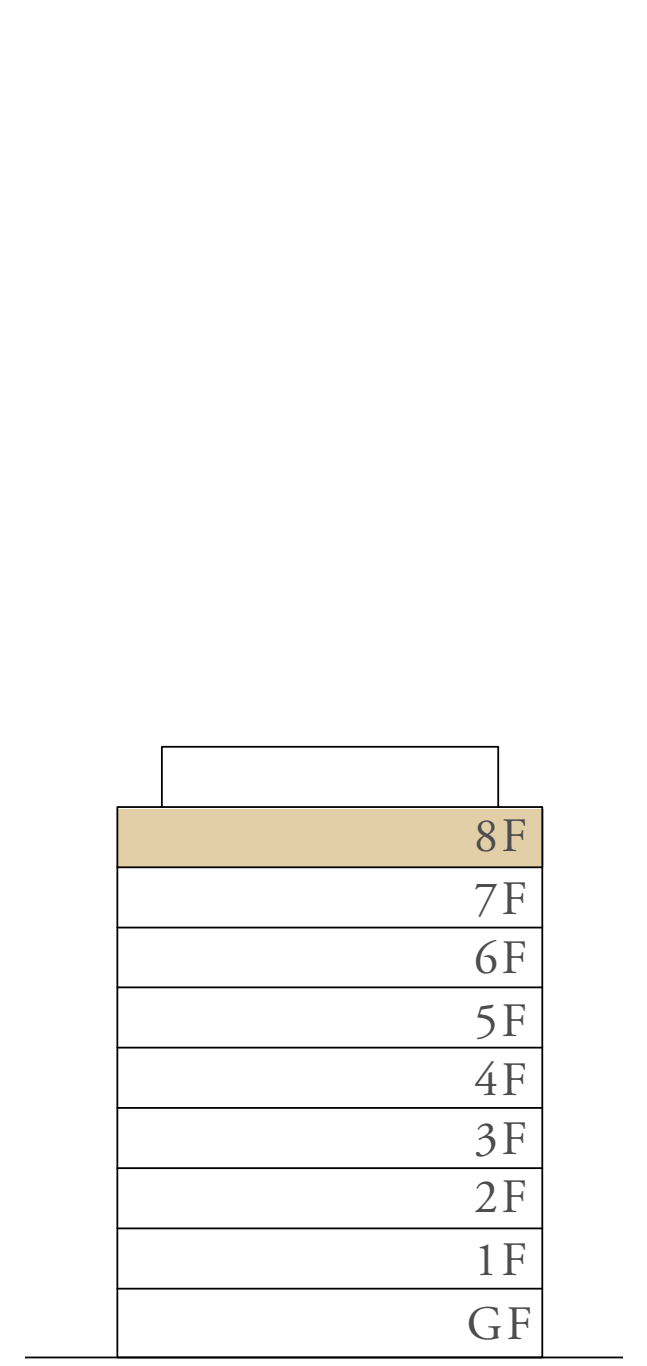
UNIT 01 & 05

SUITE AREA	1,164.65 SQ.FT.	108.20 SQ.M.
BALCONY AREA	304.94 SQ.FT.	28.33 SQ.M.
TOTAL AREA	1,469.60 SQ.FT.	136.53 SQ.M.

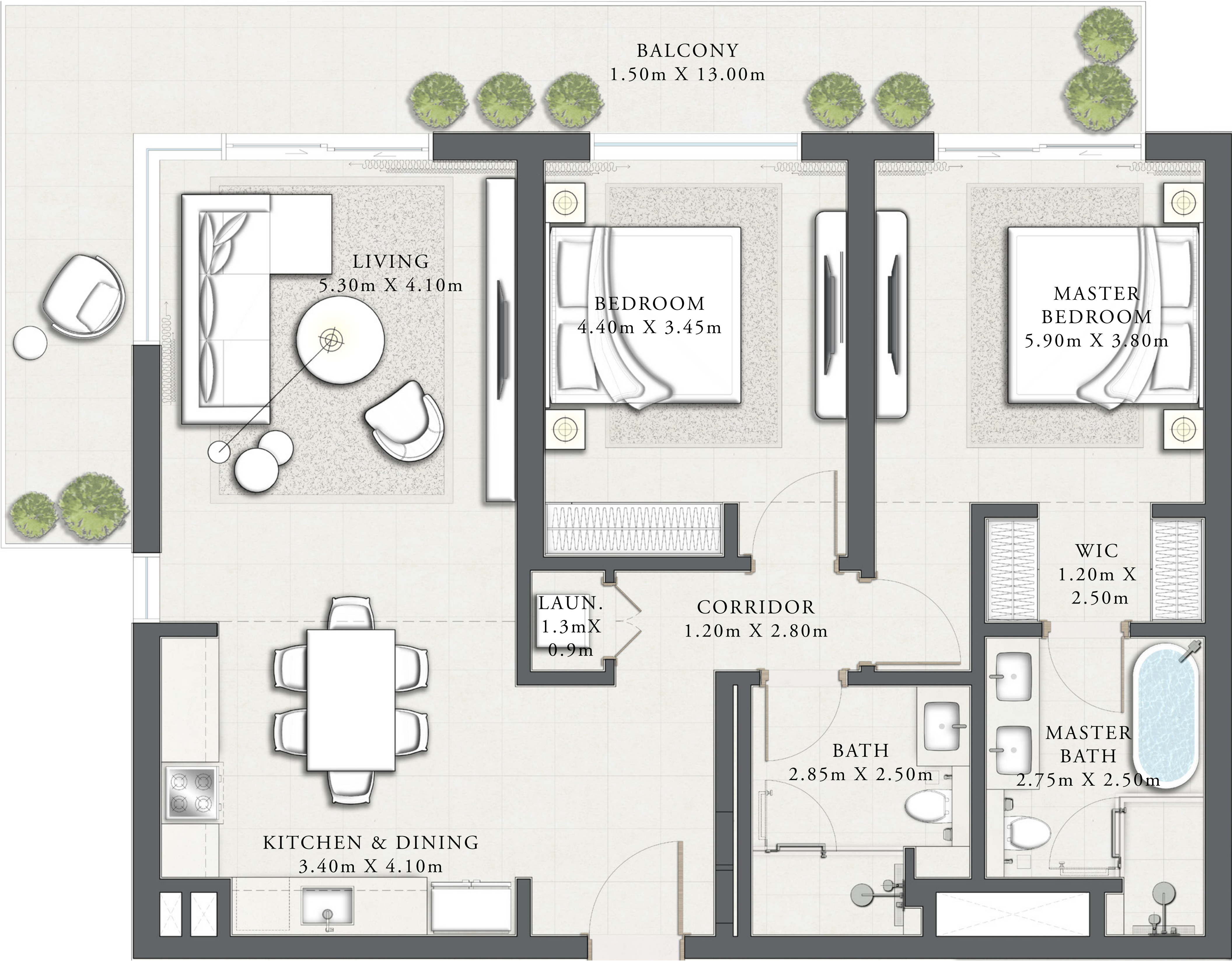
KEY PLAN



KEY SECTION



N ←



FLOOR PLAN 1. All dimensions are in imperial and metric, and measured from finish to finish excluding construction tolerances. 2. All materials, dimensions, and drawings are approximate only. 3. Information is subject to change without notice, at developer's absolute discretion. 4. Actual area may vary from the stated area. 5. Drawings not to scale. 6. All images used are for illustrative purposes only and do not represent the actual size, features, specifications, fittings, and furnishings. 7. The developer reserves the right to make revisions / alterations, at it's absolute discretion, without any liability whatsoever.



# SEASCAPE

RASHID YACHTS & MARINA

## BUILDING 3 2 BEDROOM TYPE 1C

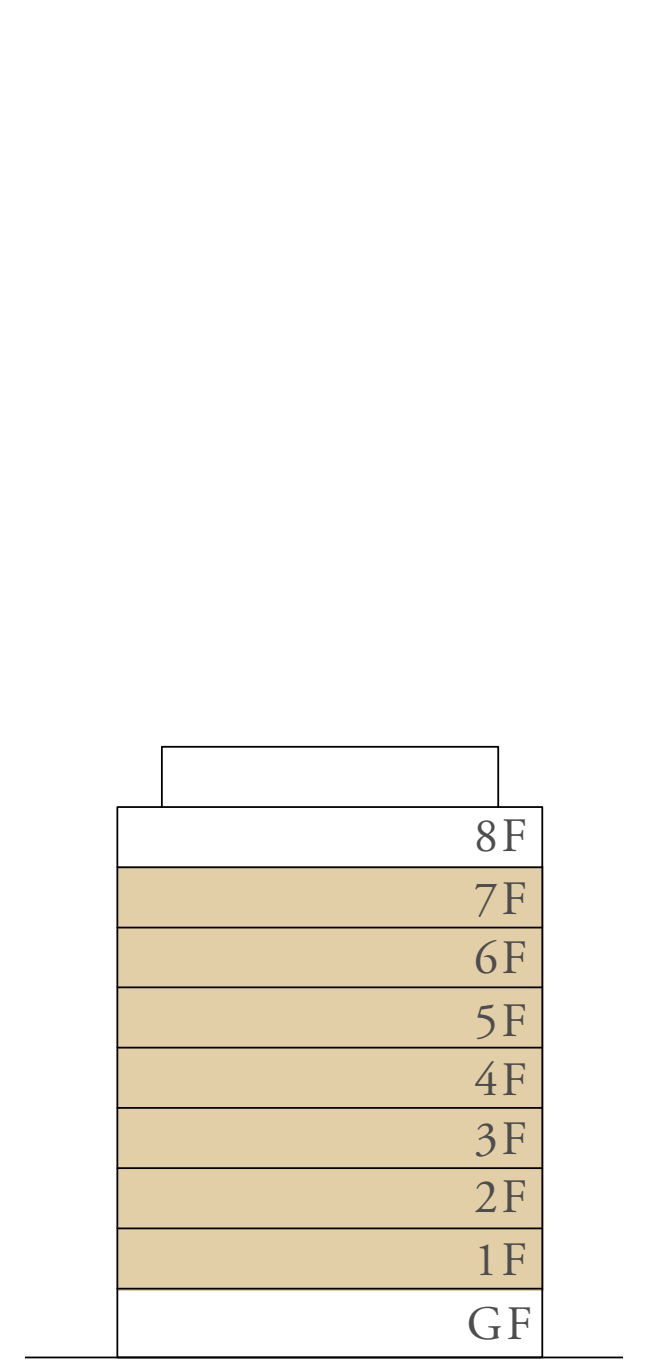
LEVEL 01 - 07    UNIT 02 & 06

SUITE AREA	1,164.65 SQ.FT.	108.20 SQ.M.
BALCONY AREA	226.15 SQ.FT.	21.01 SQ.M.
TOTAL AREA	1,390.80 SQ.FT.	129.21 SQ.M.

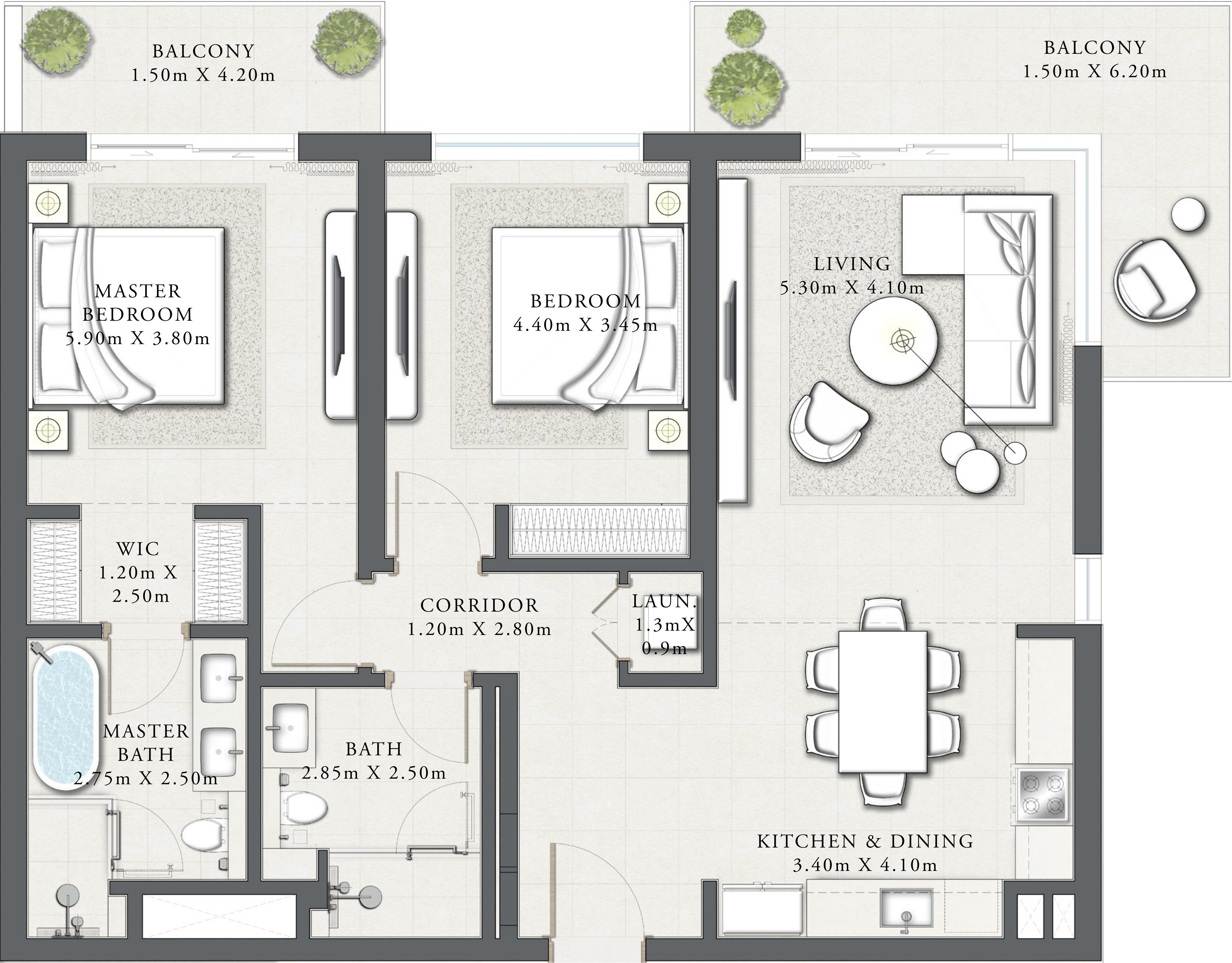
KEY PLAN



KEY SECTION



N ←



FLOOR PLAN 1. All dimensions are in imperial and metric, and measured from finish to finish excluding construction tolerances. 2. All materials, dimensions, and drawings are approximate only. 3. Information is subject to change without notice, at developer's absolute discretion. 4. Actual area may vary from the stated area. 5. Drawings not to scale. 6. All images used are for illustrative purposes only and do not represent the actual size, features, specifications, fittings, and furnishings. 7. The developer reserves the right to make revisions / alterations, at it's absolute discretion, without any liability whatsoever.



# SEASCAPE

RASHID YACHTS & MARINA

BUILDING 3

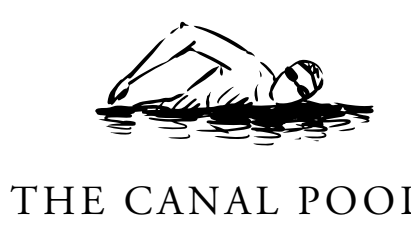
## 2 BEDROOM TYPE 1D

LEVEL 08

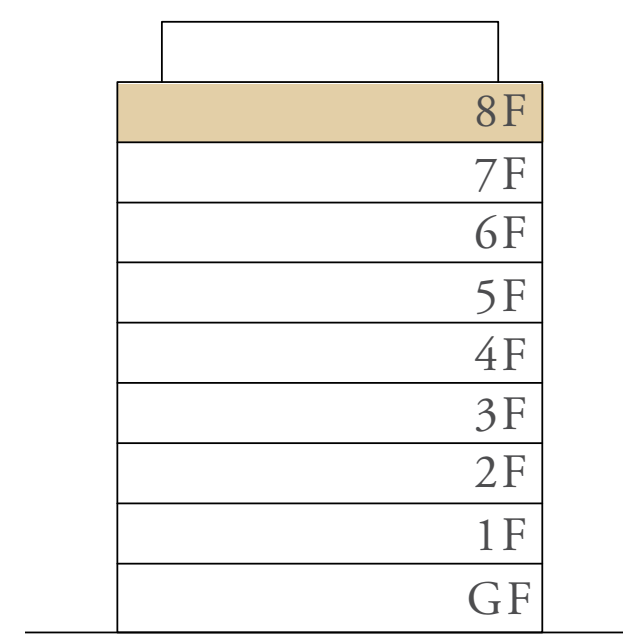
UNIT 02 & 06

SUITE AREA	1,164.65 SQ.FT.	108.20 SQ.M.
BALCONY AREA	304.83 SQ.FT.	28.32 SQ.M.
TOTAL AREA	1,469.49 SQ.FT.	136.52 SQ.M.

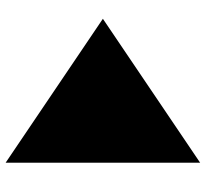
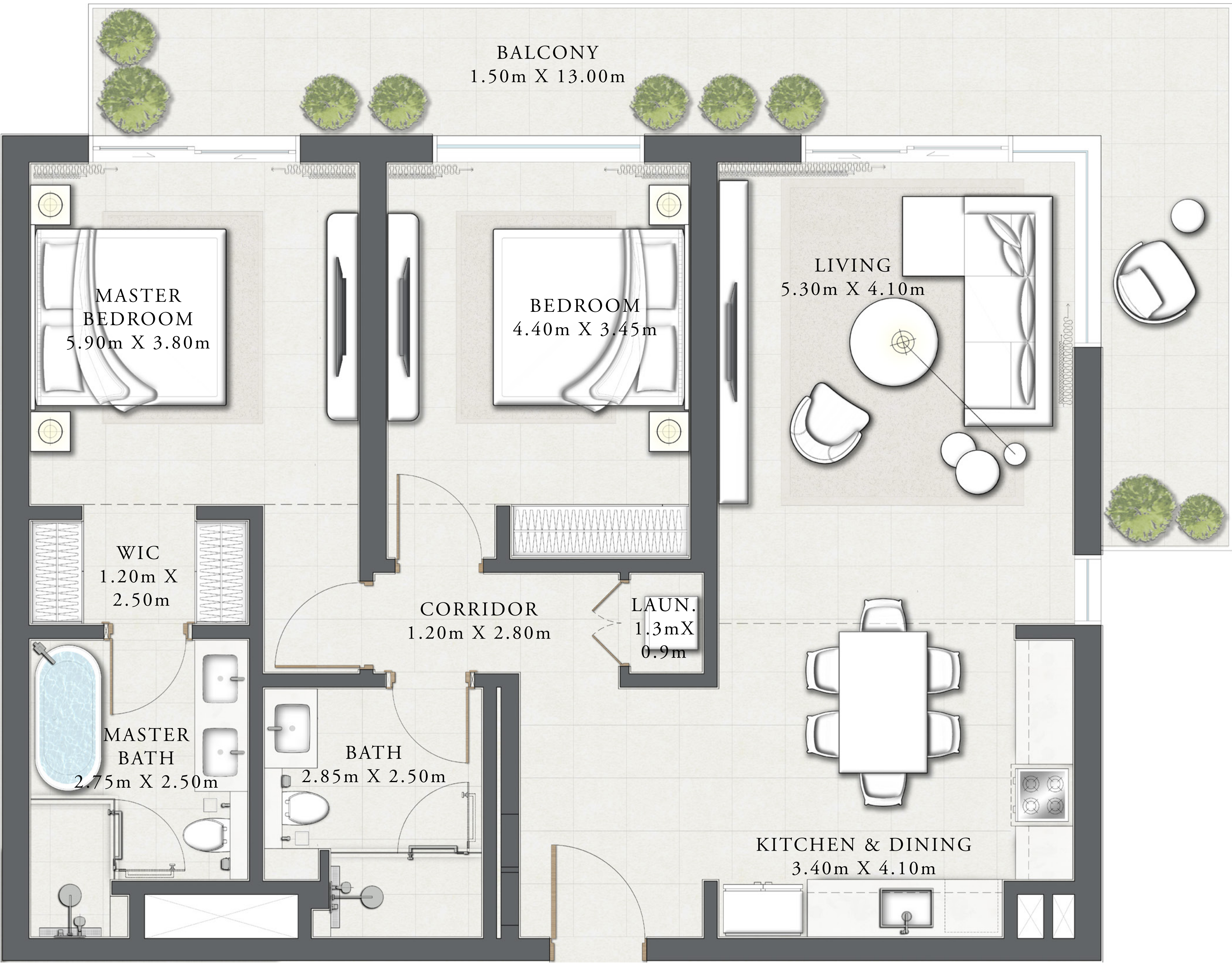
KEY PLAN



KEY SECTION



N ←



MARINA & PROMENADE

FLOOR PLAN 1. All dimensions are in imperial and metric, and measured from finish to finish excluding construction tolerances. 2. All materials, dimensions, and drawings are approximate only. 3. Information is subject to change without notice, at developer's absolute discretion. 4. Actual area may vary from the stated area. 5. Drawings not to scale. 6. All images used are for illustrative purposes only and do not represent the actual size, features, specifications, fittings, and furnishings. 7. The developer reserves the right to make revisions / alterations, at it's absolute discretion, without any liability whatsoever.



# SEASCAPE

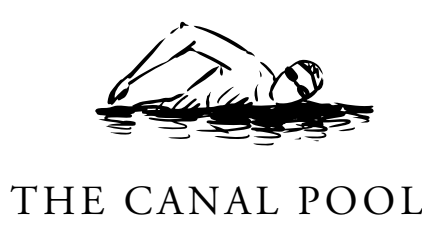
RASHID YACHTS & MARINA

## BUILDING 3 2 BEDROOM TYPE 2A

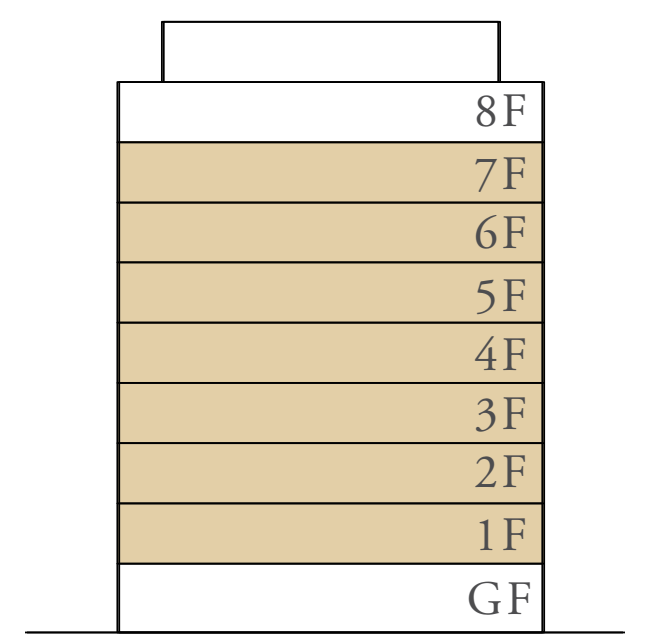
LEVEL 01 - 07    UNIT 03 & 07

SUITE AREA	1,163.25 SQ.FT.	108.07 SQ.M.
BALCONY AREA	151.99 SQ.FT.	14.12 SQ.M.
TOTAL AREA	1,315.24 SQ.FT.	122.19 SQ.M.

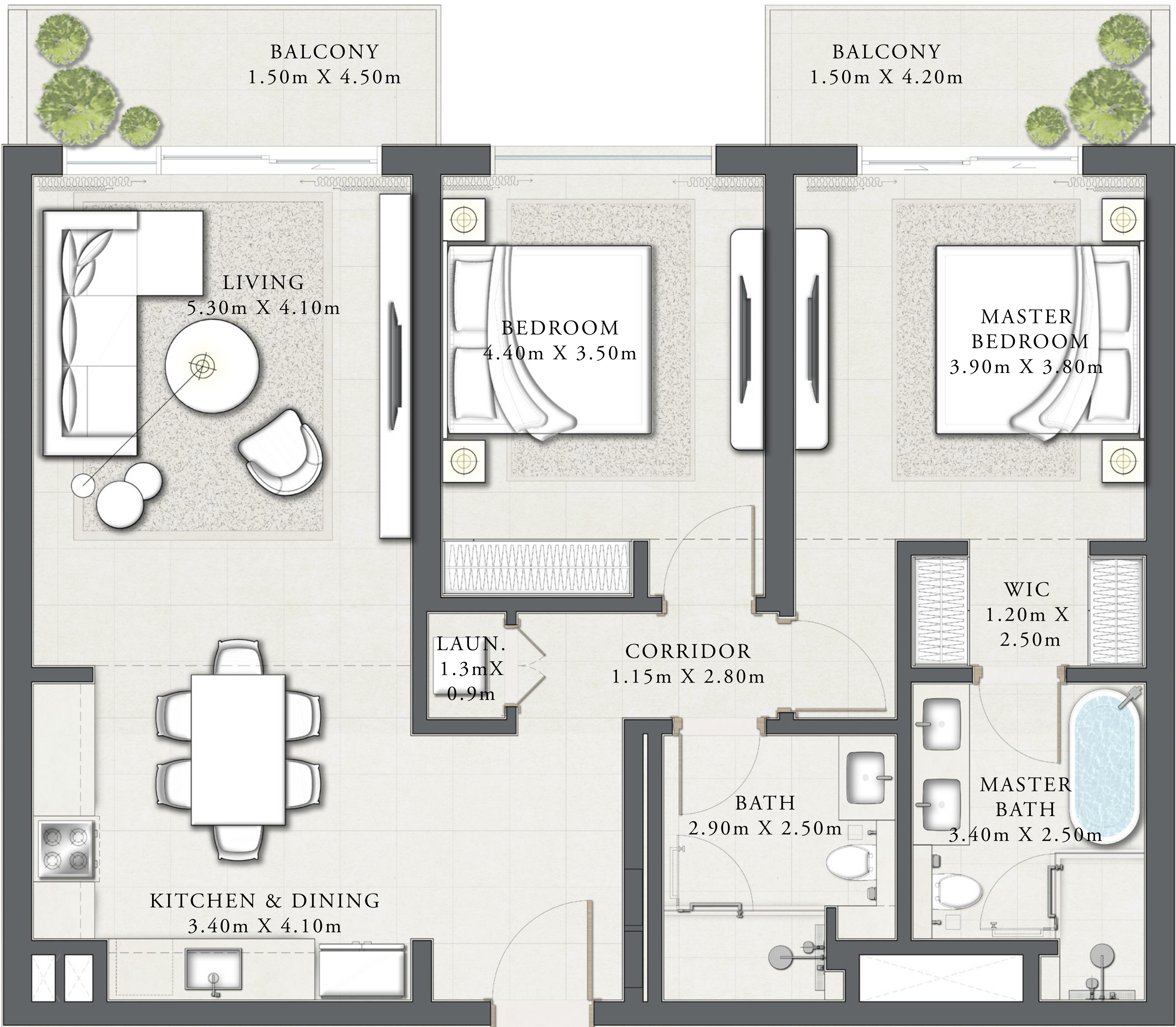
KEY PLAN



KEY SECTION



N ←



FLOOR PLAN 1. All dimensions are in imperial and metric, and measured from finish to finish excluding construction tolerances. 2. All materials, dimensions, and drawings are approximate only. 3. Information is subject to change without notice, at developer's absolute discretion. 4. Actual area may vary from the stated area. 5. Drawings not to scale. 6. All images used are for illustrative purposes only and do not represent the actual size, features, specifications, fittings, and furnishings. 7. The developer reserves the right to make revisions / alterations, at it's absolute discretion, without any liability whatsoever.



# SEASCAPE

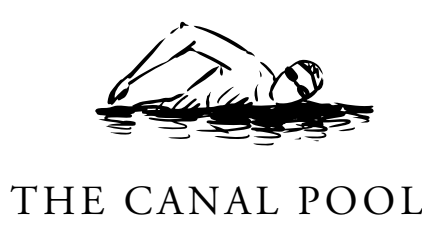
RASHID YACHTS & MARINA

## BUILDING 3 2 BEDROOM TYPE 2E

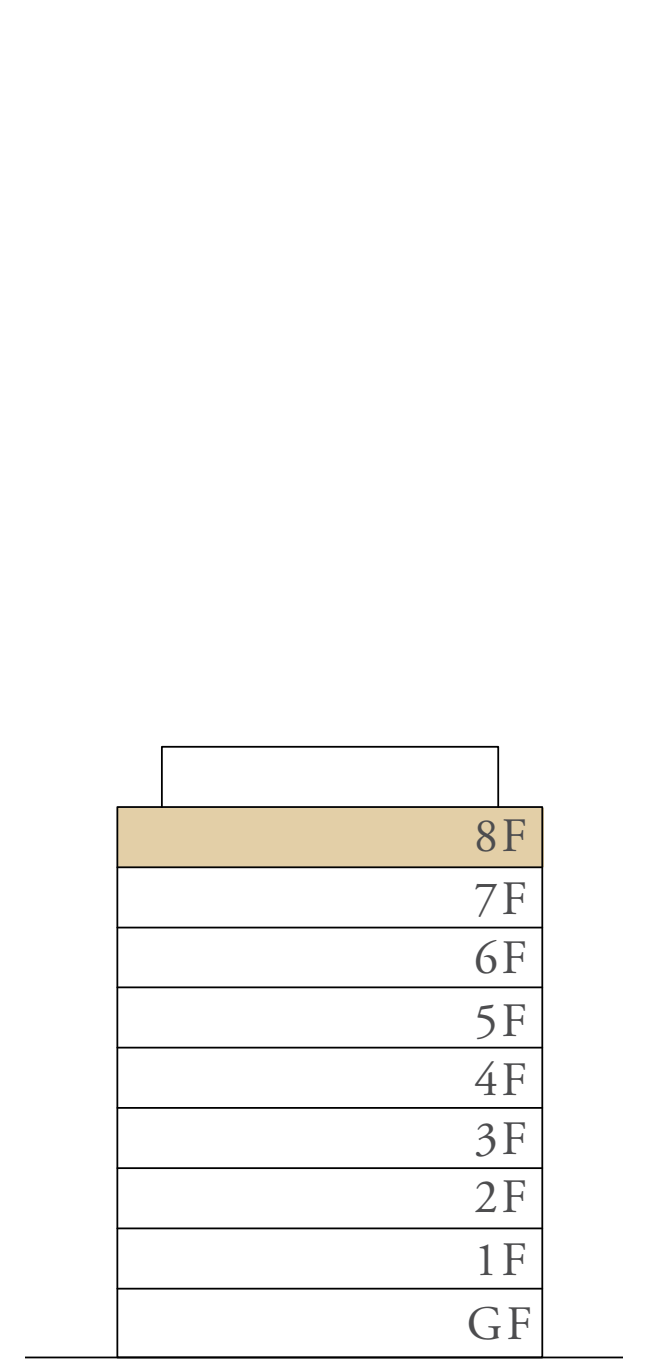
LEVEL 08      UNIT 03 & 07

SUITE AREA	1,163.25 SQ.FT.	108.07 SQ.M.
BALCONY AREA	198.81 SQ.FT.	18.47 SQ.M.
TOTAL AREA	1,362.06 SQ.FT.	126.54 SQ.M.

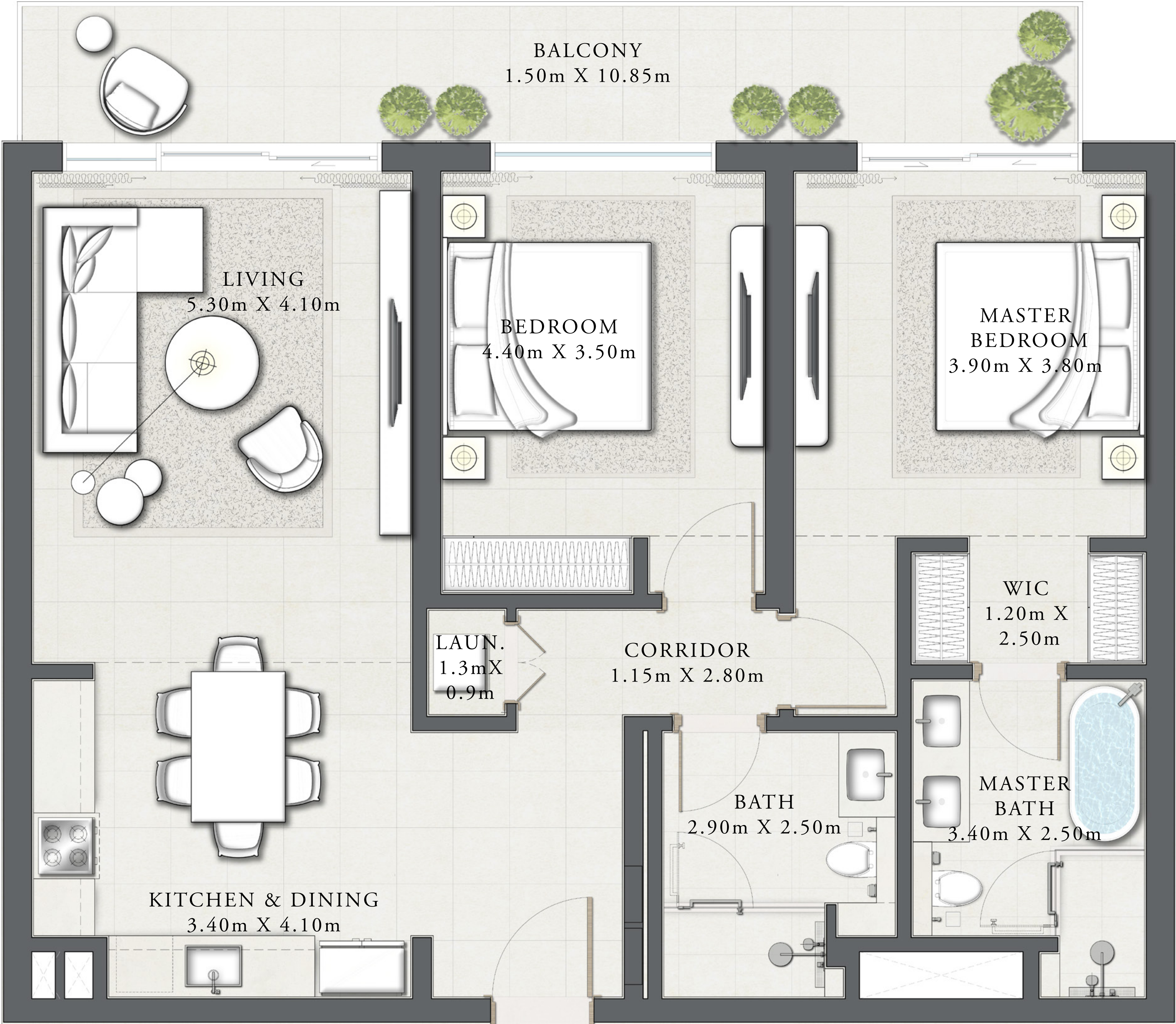
KEY PLAN



KEY SECTION



N ←



FLOOR PLAN 1. All dimensions are in imperial and metric, and measured from finish to finish excluding construction tolerances. 2. All materials, dimensions, and drawings are approximate only. 3. Information is subject to change without notice, at developer's absolute discretion. 4. Actual area may vary from the stated area. 5. Drawings not to scale. 6. All images used are for illustrative purposes only and do not represent the actual size, features, specifications, fittings, and furnishings. 7. The developer reserves the right to make revisions / alterations, at it's absolute discretion, without any liability whatsoever.