



URBAN LIFE

FACTSHEET

— BY —



URBAN PROPERTIES DEVELOPMENT

# YOUR URBAN HAVEN

Discover Urban Life- a residence woven into the fabric of Dubai's dynamic core, where each day unfolds as a seamless panorama of metropolitan elegance.

Embark on a journey where urban splendor meets serene luxury. Urban Life beckons with its captivating ambiance, creating an exquisite canvas for professional engagements, sophisticated social gatherings, and dynamic cultural experiences.



## EXQUISITE DESIGN DETAILS



## EFFORTLESS CONNECTION IN THE CITY'S HEART

Converge in the prestigious Business Bay. Urban Life invites you to indulge in the finest dining, explore sophisticated shopping, and immerse yourself in the vibrant tapestry of sights and sounds.

Here, life is an exhilarating journey on a canvas designed for those who live each moment to its fullest, wrapped in opulence and animated by the dynamic pulse of the city.



## ELEGANT LIVING SPACES

### STUDIO APARTMENTS

Perfectly designed for the modern minimalist, starting at

**453 Sq. Ft.**  
Average Area

### 1-BEDROOM APARTMENTS

Chic and spacious, with sweeping city views, starting at

**920 Sq. Ft.**  
Average Area

### 2-BEDROOM APARTMENTS

Crafted for families, offering modern elegance, starting at

**1,666 Sq. Ft.**  
Average Area







## AMENITIES FOR A REFINED LIFESTYLE

### AMENITIES

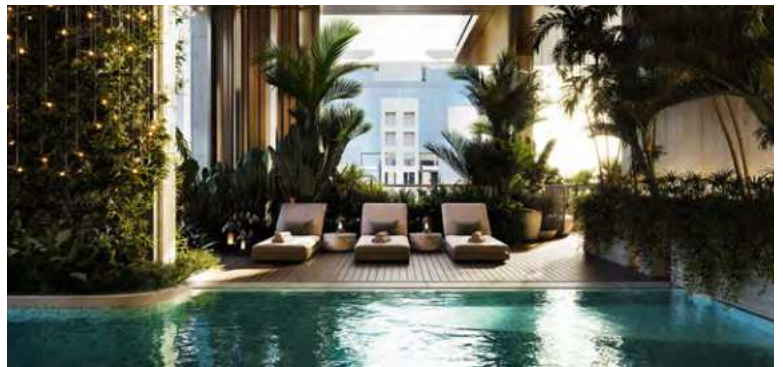
Swimming pool with skyline views.

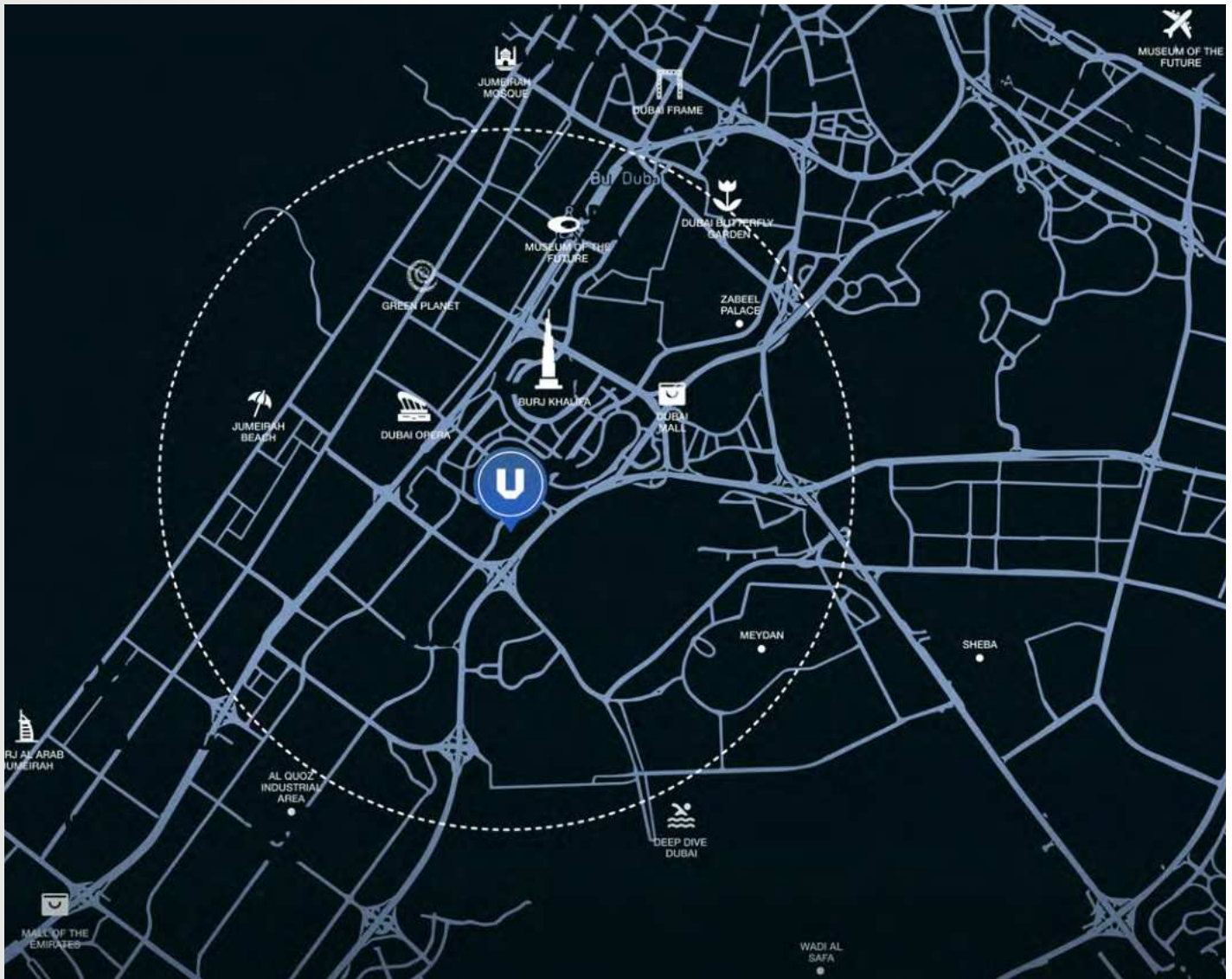
Exclusive Fitness Center for ladies and gents.

Multipurpose game room and cinema.

Outdoor green spaces and parks.

Business center and coworking spaces.





## A TAPESTRY OF NEAR REACHES

Dubai Canal Promenade

3 Minutes 

Business Bay Metro Station

5 Minutes 

Burj Khalifa

10 Minutes 

Dubai Mall

10 Minutes 

Mall of the Emirates

10 Minutes 

Jumeirah Beach

10 Minutes 

Dubai Butterfly Garden

15 Minutes 

Kite Beach

15 Minutes 

Sheikh Zayed Road

15 Minutes 

Dubai Marina Walk

20 Minutes 

DXB Airport

20 Minutes 



### 3 YEARS POST HANDOVER

# PAYMENT PLAN

**65% DURING CONSTRUCTION & 35% OVER THE 3 YEARS**

| Serial No. | Time of Payment               | Percentage |
|------------|-------------------------------|------------|
| 1          | Booking                       | 10%        |
| 2          | Signing of SPA                | 10%        |
| 3          | 3 months from signing of SPA  | 5%         |
| 4          | 7 months from signing of SPA  | 5%         |
| 5          | 11 months from signing of SPA | 5%         |
| 6          | 15 months from signing of SPA | 5%         |
| 7          | 19 months from signing of SPA | 5%         |
| 8          | Handover                      | 20%        |
| 9          | 3 months after handover       | 5%         |
| 10         | 6 months after handover       | 5%         |
| 11         | 12 months after handover      | 5%         |
| 12         | 18 months after handover      | 5%         |
| 13         | 24 months after handover      | 5%         |
| 14         | 30 months after handover      | 5%         |
| 15         | 36 months after handover      | 5%         |