



THE EIGHTY THREE

DUBAI SOUTH



OKSA DEVELOPER



THE EIGHTY THREE

DUBAI SOUTH



THIRD FLOOR

FLOOR PLAN 1. All dimensions are in imperial and metric, and measured from finish to finish excluding construction tolerances. 2. All materials, dimensions, and drawings are approximately only. 3. Information is subject to change without notice, at developer's absolute discretion. 4. Actual area may vary from the stated area. 5. Drawings not to scale. 6. All images used are for illustrative purposes only and do not represent the actual size, features, specifications, fittings, and furnishings. 7. The developer reserves the right to make revisions / alterations, at it's absolute discretion, without any liability whatsoever.



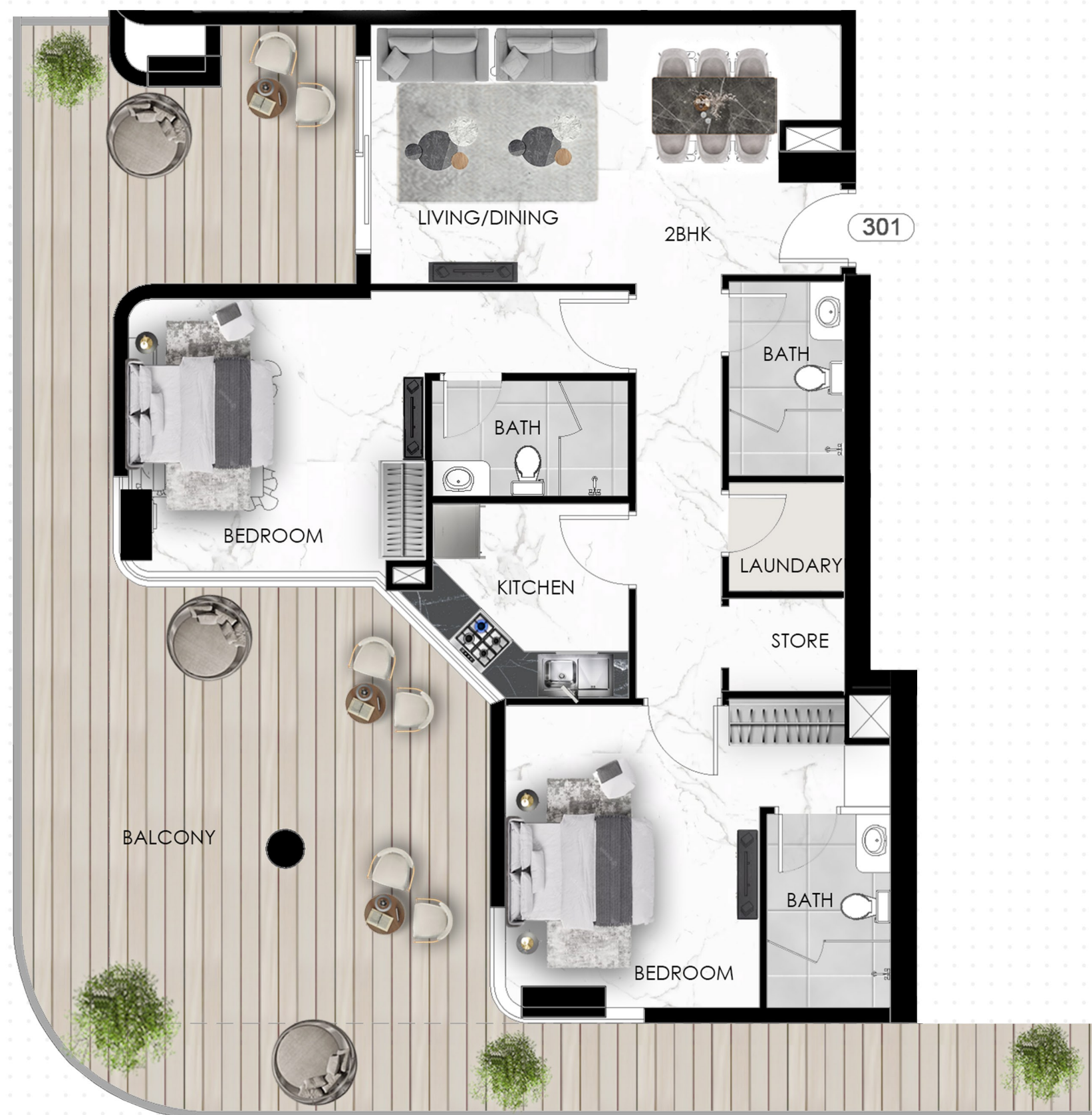
THE EIGHTY THREE

DUBAI SOUTH

2 BHK - FLAT NO 301

LEVEL -3

SUITE AREA	87.17 SQ.M	938.29 SQ.FT
BALCONY AREA	78.47 SQ.M	844.64 SQ.FT
TOTAL AREA	165.64 SQ.M	1782.93 SQ.FT



KEY PLAN

UNIT PLAN : 1. All dimensions are in imperial and metric, and measured from finish to finish excluding construction tolerances. 2. All materials, dimesions, and drawings are approximately only. 3. Information is subject to change without notice, at developer's absolute discretion. 4. Actual area may vary from the stated area. 5. Drawings not to scale. 6. All images used are for illustrative purposes only and do not represent the actual size, features, specifications, fittings, and furnishings. 7. The developer reserves the right to make revisions / alterations, at it's absolute discretion, without any liability whatsoever.



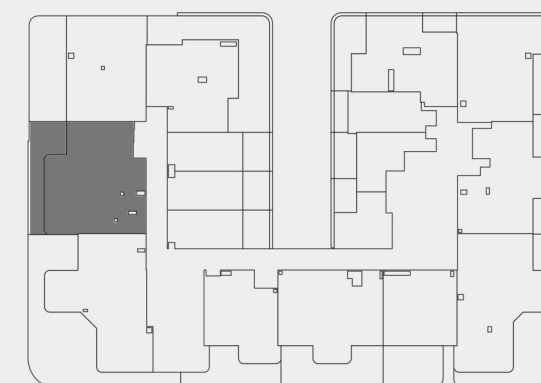
THE EIGHTY THREE

DUBAI SOUTH

2 BHK - FLAT NO 302

LEVEL -3

SUITE AREA	88.21 SQ.M	949.48 SQ.FT
BALCONY AREA	22.89 SQ.M	246.39 SQ.FT
TOTAL AREA	111.10 SQ.M	1195.87 SQ.FT



KEY PLAN

UNIT PLAN : 1. All dimensions are in imperial and metric, and measured from finish to finish excluding construction tolerances. 2. All materials, dimesions, and drawings are approximately only. 3. Information is subject to change without notice, at developer's absolute discretion. 4. Actual area may vary from the stated area. 5. Drawings not to scale. 6. All images used are for illustrative purposes only and do not represent the actual size, features, specifications, fittings, and furnishings. 7. The developer reserves the right to make revisions / alterations, at it's absolute discretion, without any liability whatsoever.



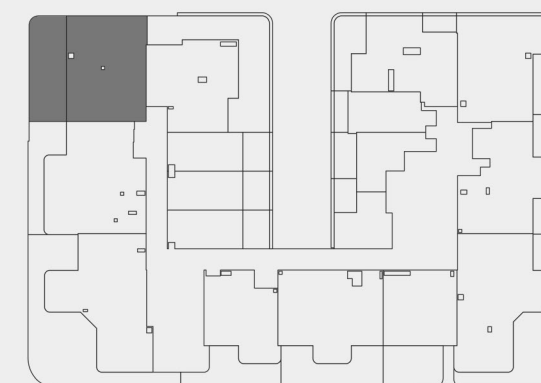
THE EIGHTY THREE

DUBAI SOUTH

2 BHK - FLAT NO 303

LEVEL -3

SUITE AREA	72.40 SQ.M	779.31 SQ.FT
BALCONY AREA	34.82 SQ.M	374.80 SQ.FT
TOTAL AREA	107.22 SQ.M	1154.11 SQ.FT



KEY PLAN

UNIT PLAN : 1. All dimensions are in imperial and metric, and measured from finish to finish excluding construction tolerances. 2. All materials, dimesions, and drawings are approximately only. 3. Information is subject to change without notice, at developer's absolute discretion. 4. Actual area may vary from the stated area. 5. Drawings not to scale. 6. All images used are for illustrative purposes only and do not represent the actual size, features, specifications, fittings, and furnishings. 7. The developer reserves the right to make revisions / alterations, at it's absolute discretion, without any liability whatsoever.



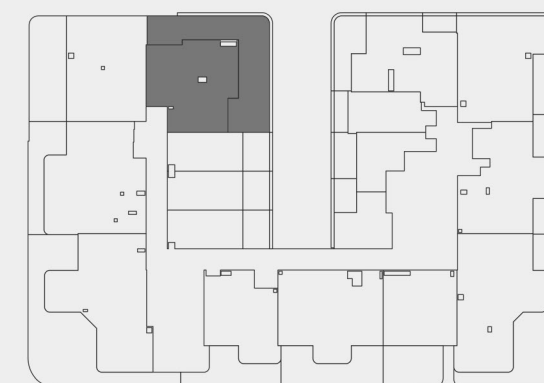
THE EIGHTY THREE

DUBAI SOUTH

2 BHK - FLAT NO 304

LEVEL -3

SUITE AREA	62.81 SQ.M	676.08 SQ.FT
BALCONY AREA	63.10 SQ.M	679.21 SQ.FT
TOTAL AREA	125.91 SQ.M	1355.29 SQ.FT



KEY PLAN

UNIT PLAN : 1. All dimensions are in imperial and metric, and measured from finish to finish excluding construction tolerances. 2. All materials, dimesions, and drawings are approximately only. 3. Information is subject to change without notice, at developer's absolute discretion. 4. Actual area may vary from the stated area. 5. Drawings not to scale. 6. All images used are for illustrative purposes only and do not represent the actual size, features, specifications, fittings, and furnishings. 7. The developer reserves the right to make revisions / alterations, at it's absolute discretion, without any liability whatsoever.

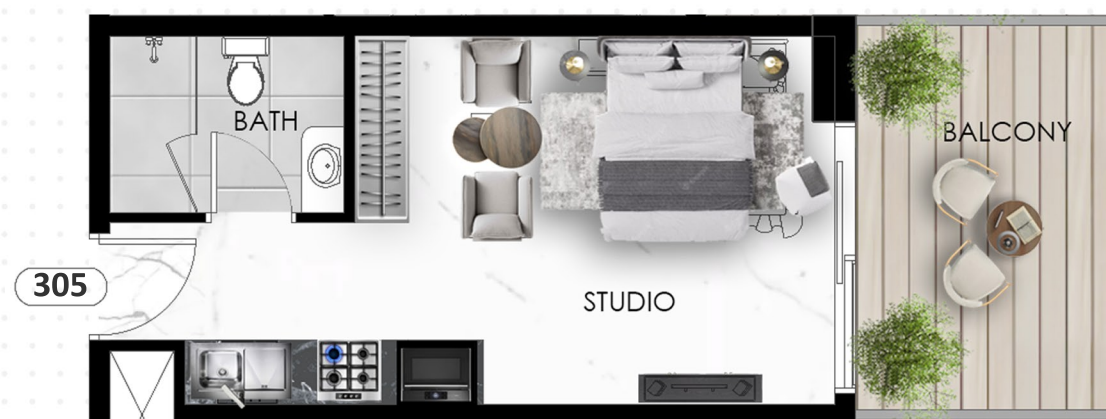


THE EIGHTY THREE

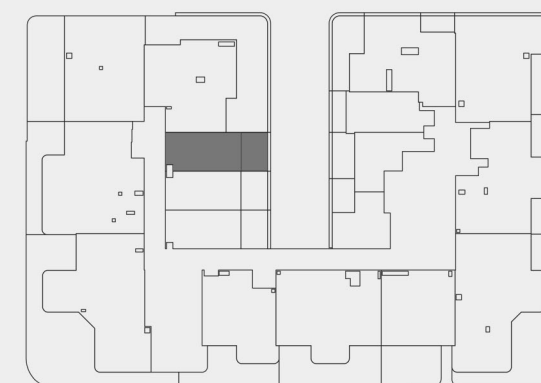
DUBAI SOUTH

STUDIO - FLAT NO 305

LEVEL -3



SUITE AREA	25.02 SQ.M	269.31 SQ.FT
BALCONY AREA	10.59 SQ.M	113.99 SQ.FT
TOTAL AREA	35.61 SQ.M	383.30 SQ.FT



KEY PLAN

UNIT PLAN : 1. All dimensions are in imperial and metric, and measured from finish to finish excluding construction tolerances. 2. All materials, dimesions, and drawings are approximately only. 3. Information is subject to change without notice, at developer's absolute discretion. 4. Actual area may vary from the stated area. 5. Drawings not to scale. 6. All images used are for illustrative purposes only and do not represent the actual size, features, specifications, fittings, and furnishings. 7. The developer reserves the right to make revisions / alterations, at it's absolute discretion, without any liability whatsoever.



THE EIGHTY THREE

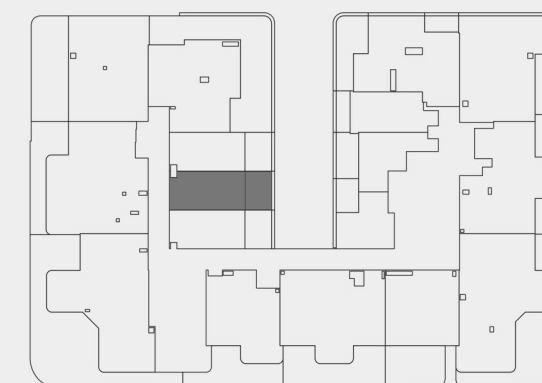
DUBAI SOUTH

STUDIO - FLAT NO 306

LEVEL -3



SUITE AREA	25.05 SQ.M	269.64 SQ.FT
BALCONY AREA	10.41 SQ.M	112.05 SQ.FT
TOTAL AREA	35.46 SQ.M	381.69 SQ.FT



KEY PLAN

UNIT PLAN : 1. All dimensions are in imperial and metric, and measured from finish to finish excluding construction tolerances. 2. All materials, dimesions, and drawings are approximately only. 3. Information is subject to change without notice, at developer's absolute discretion. 4. Actual area may vary from the stated area. 5. Drawings not to scale. 6. All images used are for illustrative purposes only and do not represent the actual size, features, specifications, fittings, and furnishings. 7. The developer reserves the right to make revisions / alterations, at it's absolute discretion, without any liability whatsoever.

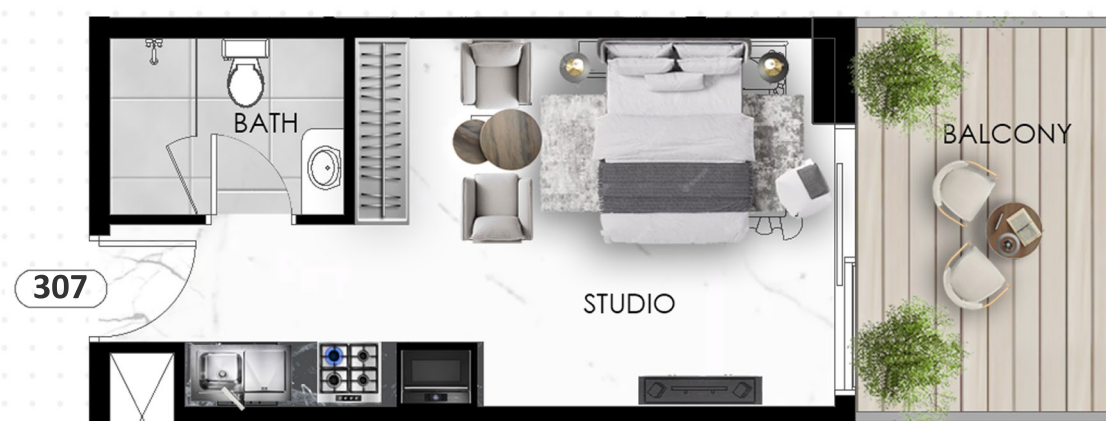


THE EIGHTY THREE

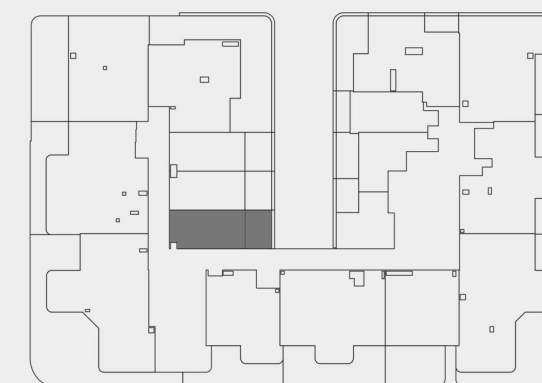
DUBAI SOUTH

STUDIO - FLAT NO 307

LEVEL -3



SUITE AREA	25.07 SQ.M	269.85 SQ.FT
BALCONY AREA	10.39 SQ.M	111.84 SQ.FT
TOTAL AREA	35.46 SQ.M	381.69 SQ.FT



KEY PLAN

UNIT PLAN : 1. All dimensions are in imperial and metric, and measured from finish to finish excluding construction tolerances. 2. All materials, dimesions, and drawings are approximately only. 3. Information is subject to change without notice, at developer's absolute discretion. 4. Actual area may vary from the stated area. 5. Drawings not to scale. 6. All images used are for illustrative purposes only and do not represent the actual size, features, specifications, fittings, and furnishings. 7. The developer reserves the right to make revisions / alterations, at it's absolute discretion, without any liability whatsoever.



THE EIGHTY THREE

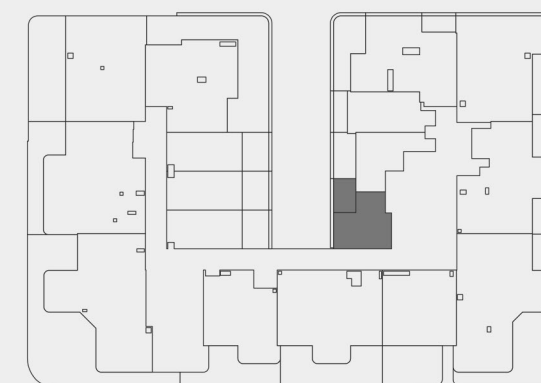
DUBAI SOUTH

STUDIO - FLAT NO 308

LEVEL -3



SUITE AREA	23.64 SQ.M	254.46 SQ.FT
BALCONY AREA	7.71 SQ.M	82.99 SQ.FT
TOTAL AREA	31.35 SQ.M	337.45 SQ.FT



KEY PLAN

UNIT PLAN : 1. All dimensions are in imperial and metric, and measured from finish to finish excluding construction tolerances. 2. All materials, dimesions, and drawings are approximately only. 3. Information is subject to change without notice, at developer's absolute discretion. 4. Actual area may vary from the stated area. 5. Drawings not to scale. 6. All images used are for illustrative purposes only and do not represent the actual size, features, specifications, fittings, and furnishings. 7. The developer reserves the right to make revisions / alterations, at it's absolute discretion, without any liability whatsoever.



THE EIGHTY THREE

DUBAI SOUTH

STUDIO - FLAT NO 309

LEVEL -3



SUITE AREA	26.17 SQ.M	281.69 SQ.FT
BALCONY AREA	10.19 SQ.M	109.68 SQ.FT
TOTAL AREA	36.36 SQ.M	391.37 SQ.FT



KEY PLAN

UNIT PLAN : 1. All dimensions are in imperial and metric, and measured from finish to finish excluding construction tolerances. 2. All materials, dimesions, and drawings are approximately only. 3. Information is subject to change without notice, at developer's absolute discretion. 4. Actual area may vary from the stated area. 5. Drawings not to scale. 6. All images used are for illustrative purposes only and do not represent the actual size, features, specifications, fittings, and furnishings. 7. The developer reserves the right to make revisions / alterations, at it's absolute discretion, without any liability whatsoever.

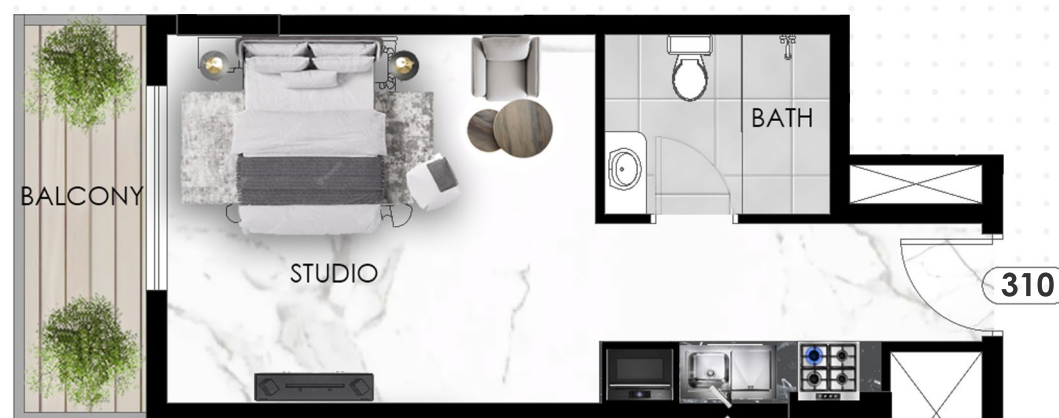


THE EIGHTY THREE

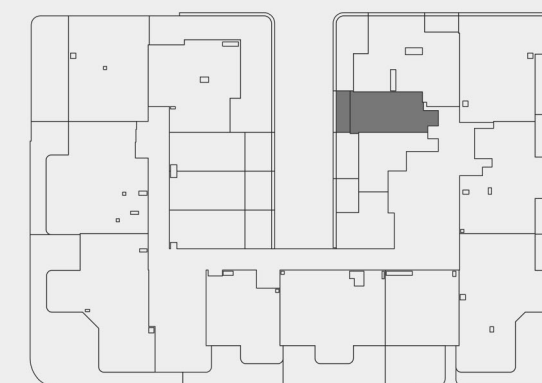
DUBAI SOUTH

STUDIO - FLAT NO 310

LEVEL -3



SUITE AREA	27.85 SQ.M	299.77 SQ.FT
BALCONY AREA	6.39 SQ.M	68.78 SQ.FT
TOTAL AREA	34.24 SQ.M	368.55 SQ.FT



KEY PLAN

UNIT PLAN : 1. All dimensions are in imperial and metric, and measured from finish to finish excluding construction tolerances. 2. All materials, dimesions, and drawings are approximately only. 3. Information is subject to change without notice, at developer's absolute discretion. 4. Actual area may vary from the stated area. 5. Drawings not to scale. 6. All images used are for illustrative purposes only and do not represent the actual size, features, specifications, fittings, and furnishings. 7. The developer reserves the right to make revisions / alterations, at it's absolute discretion, without any liability whatsoever.



THE EIGHTY THREE

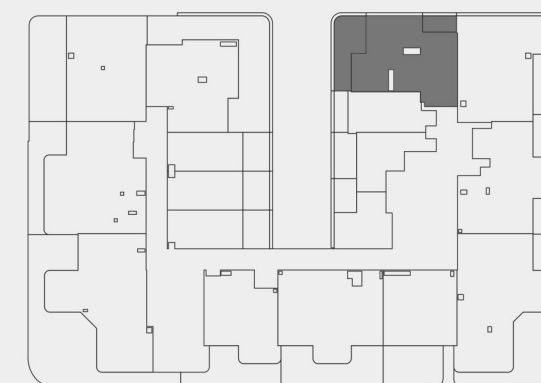
DUBAI SOUTH

2 BHK - FLAT NO 311

LEVEL -3



SUITE AREA	63.87 SQ.M	687.49 SQ.FT
BALCONY AREA	23.61 SQ.M	254.14 SQ.FT
TOTAL AREA	87.48 SQ.M	941.63 SQ.FT



KEY PLAN

UNIT PLAN : 1. All dimensions are in imperial and metric, and measured from finish to finish excluding construction tolerances. 2. All materials, dimesions, and drawings are approximately only. 3. Information is subject to change without notice, at developer's absolute discretion. 4. Actual area may vary from the stated area. 5. Drawings not to scale. 6. All images used are for illustrative purposes only and do not represent the actual size, features, specifications, fittings, and furnishings. 7. The developer reserves the right to make revisions / alterations, at it's absolute discretion, without any liability whatsoever.



THE EIGHTY THREE

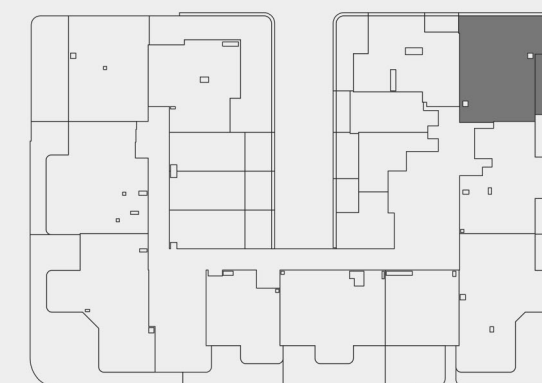
DUBAI SOUTH

2 BHK - FLAT NO 312

LEVEL -3



SUITE AREA	76.56 SQ.M	824.08 SQ.FT
BALCONY AREA	15.93 SQ.M	171.47 SQ.FT
TOTAL AREA	92.49 SQ.M	995.55 SQ.FT



KEY PLAN

UNIT PLAN : 1. All dimensions are in imperial and metric, and measured from finish to finish excluding construction tolerances. 2. All materials, dimesions, and drawings are approximately only. 3. Information is subject to change without notice, at developer's absolute discretion. 4. Actual area may vary from the stated area. 5. Drawings not to scale. 6. All images used are for illustrative purposes only and do not represent the actual size, features, specifications, fittings, and furnishings. 7. The developer reserves the right to make revisions / alterations, at it's absolute discretion, without any liability whatsoever.

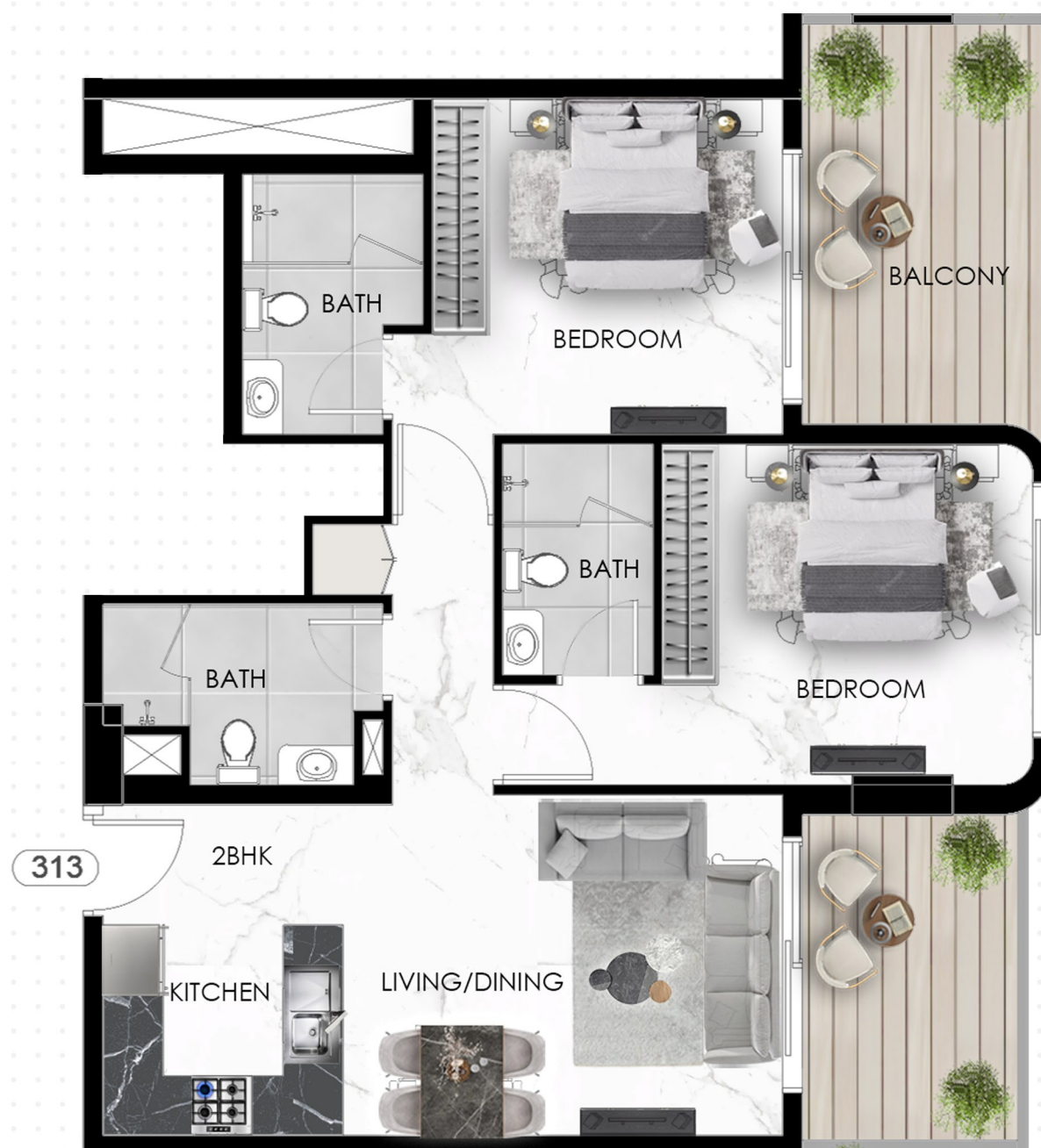


THE EIGHTY THREE

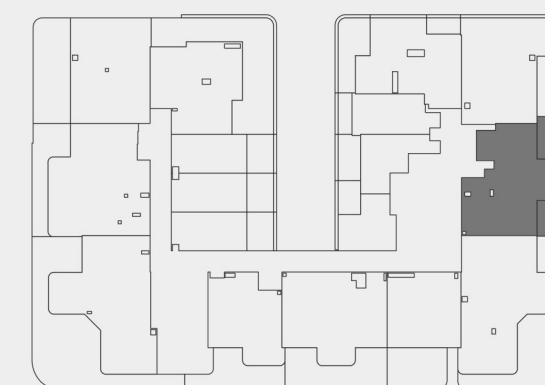
DUBAI SOUTH

2 BHK - FLAT NO 313

LEVEL -3



SUITE AREA	71.49 SQ.M	769.51 SQ.FT
BALCONY AREA	21.74 SQ.M	234.01 SQ.FT
TOTAL AREA	93.23 SQ.M	1003.52 SQ.FT



KEY PLAN

UNIT PLAN : 1. All dimensions are in imperial and metric, and measured from finish to finish excluding construction tolerances. 2. All materials, dimesions, and drawings are approximately only. 3. Information is subject to change without notice, at developer's absolute discretion. 4. Actual area may vary from the stated area. 5. Drawings not to scale. 6. All images used are for illustrative purposes only and do not represent the actual size, features, specifications, fittings, and furnishings. 7. The developer reserves the right to make revisions / alterations, at it's absolute discretion, without any liability whatsoever.



THE EIGHTY THREE

DUBAI SOUTH

2 BHK - FLAT NO 314

LEVEL -3

SUITE AREA	85.63 SQ.M	921.71 SQ.FT
BALCONY AREA	52.77 SQ.M	568.01 SQ.FT
TOTAL AREA	138.40 SQ.M	1489.73 SQ.FT



KEY PLAN

UNIT PLAN : 1. All dimensions are in imperial and metric, and measured from finish to finish excluding construction tolerances. 2. All materials, dimesions, and drawings are approximately only. 3. Information is subject to change without notice, at developer's absolute discretion. 4. Actual area may vary from the stated area. 5. Drawings not to scale. 6. All images used are for illustrative purposes only and do not represent the actual size, features, specifications, fittings, and furnishings. 7. The developer reserves the right to make revisions / alterations, at it's absolute discretion, without any liability whatsoever.



THE EIGHTY THREE

DUBAI SOUTH

1 BHK - FLAT NO 315

LEVEL -3

SUITE AREA	46.83 SQ.M	504.07 SQ.FT
BALCONY AREA	23.68 SQ.M	254.89 SQ.FT
TOTAL AREA	70.51 SQ.M	758.96 SQ.FT



KEY PLAN

UNIT PLAN : 1. All dimensions are in imperial and metric, and measured from finish to finish excluding construction tolerances. 2. All materials, dimesions, and drawings are approximately only. 3. Information is subject to change without notice, at developer's absolute discretion. 4. Actual area may vary from the stated area. 5. Drawings not to scale. 6. All images used are for illustrative purposes only and do not represent the actual size, features, specifications, fittings, and furnishings. 7. The developer reserves the right to make revisions / alterations, at it's absolute discretion, without any liability whatsoever.



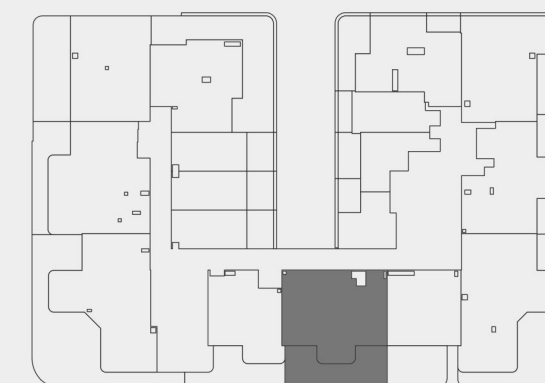
THE EIGHTY THREE

DUBAI SOUTH

2 BHK - FLAT NO 316

LEVEL -3

SUITE AREA	72.29 SQ.M	778.12 SQ.FT
BALCONY AREA	34.02 SQ.M	366.19 SQ.FT
TOTAL AREA	105.36 SQ.M	1144.31 SQ.FT



KEY PLAN

UNIT PLAN : 1. All dimensions are in imperial and metric, and measured from finish to finish excluding construction tolerances. 2. All materials, dimesions, and drawings are approximately only. 3. Information is subject to change without notice, at developer's absolute discretion. 4. Actual area may vary from the stated area. 5. Drawings not to scale. 6. All images used are for illustrative purposes only and do not represent the actual size, features, specifications, fittings, and furnishings. 7. The developer reserves the right to make revisions / alterations, at it's absolute discretion, without any liability whatsoever.



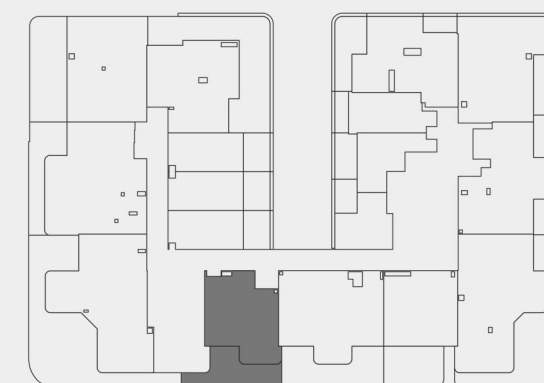
THE EIGHTY THREE

DUBAI SOUTH

1 BHK - FLAT NO 317

LEVEL -3

SUITE AREA	49.42 SQ.M	531.95 SQ.FT
BALCONY AREA	25.07 SQ.M	269.85 SQ.FT
TOTAL AREA	74.49 SQ.M	801.80 SQ.FT



KEY PLAN

UNIT PLAN : 1. All dimensions are in imperial and metric, and measured from finish to finish excluding construction tolerances. 2. All materials, dimesions, and drawings are approximately only. 3. Information is subject to change without notice, at developer's absolute discretion. 4. Actual area may vary from the stated area. 5. Drawings not to scale. 6. All images used are for illustrative purposes only and do not represent the actual size, features, specifications, fittings, and furnishings. 7. The developer reserves the right to make revisions / alterations, at it's absolute discretion, without any liability whatsoever.



THE EIGHTY THREE

— DUBAI SOUTH —

by



OKSA DEVELOPER