

## UNIT - 301

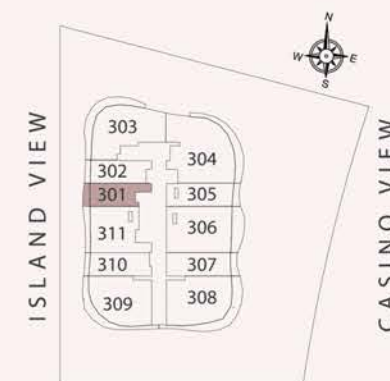
### STUDIO

LEVEL-03

Internal Living Area	468.77 sq.ft.
Outdoor Living Area	61.78 sq.ft.
<b>Total Living Area</b>	<b>530.55 sq.ft.</b>



## KEY PLAN



## KEY ELEVATION



**DISCLAIMER:**  
All measurements are indicative and are for marketing purposes only. All efforts have been made to ensure their accuracy, however these layouts are subject to change at the discretion of the developer and should not be relied upon as final. The actual area may vary from the stated area and the developer reserves the right to make the revisions/alterations, at its absolute discretion, without any liability whatsoever

## UNIT - 302

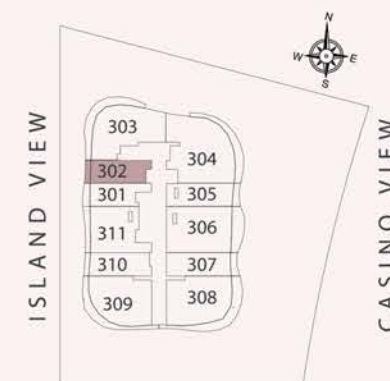
### STUDIO

LEVEL-03

Internal Living Area	511.72 sq.ft.
Outdoor Living Area	49.08 sq.ft.
<b>Total Living Area</b>	<b>560.80 sq.ft.</b>



## KEY PLAN



## KEY ELEVATION



**DISCLAIMER:**  
All measurements are indicative and are for marketing purposes only. All efforts have been made to ensure their accuracy, however these layouts are subject to change at the discretion of the developer and should not be relied upon as final. The actual area may vary from the stated area and the developer reserves the right to make the revisions/alterations, at its absolute discretion, without any liability whatsoever

## UNIT - 303

### 1 BEDROOM

LEVEL-03

Internal Living Area	1162.93 sq.ft.
Outdoor Living Area	300.42 sq.ft.
<b>Total Living Area</b>	<b>1463.35 sq.ft.</b>



## KEY PLAN



## KEY ELEVATION



**DISCLAIMER:**  
All measurements are indicative and are for marketing purposes only. All efforts have been made to ensure their accuracy, however these layouts are subject to change at the discretion of the developer and should not be relied upon as final. The actual area may vary from the stated area and the developer reserves the right to make the revisions/alterations, at its absolute discretion, without any liability whatsoever.

## UNIT - 304

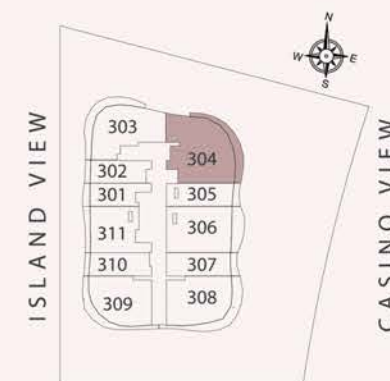
### 2 BEDROOM

LEVEL-03

Internal Living Area	1539.13 sq.ft.
Outdoor Living Area	241.87 sq.ft.
Total Living Area	1781.00 sq.ft.



## KEY PLAN



## KEY ELEVATION



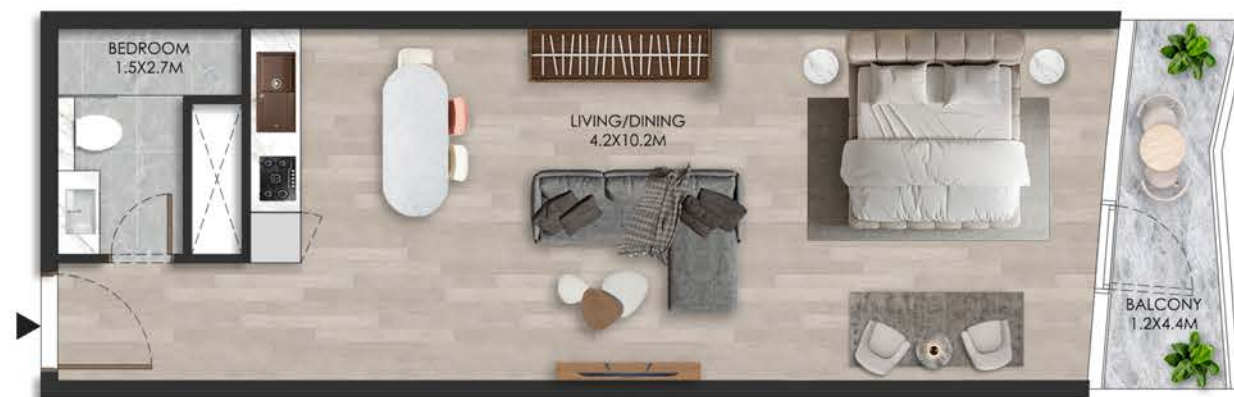
**DISCLAIMER:**  
All measurements are indicative and are for marketing purposes only. All efforts have been made to ensure their accuracy, however these layouts are subject to change at the discretion of the developer and should not be relied upon as final. The actual area may vary from the stated area and the developer reserves the right to make the revisions/alterations, at its absolute discretion, without any liability whatsoever

## UNIT - 305

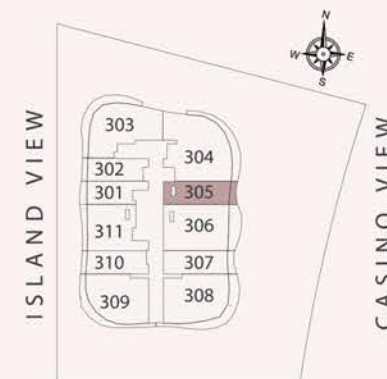
### STUDIO

LEVEL-03

Internal Living Area	582.11 sq.ft.
Outdoor Living Area	59.42 sq.ft.
Total Living Area	641.53 sq.ft.



## KEY PLAN



## KEY ELEVATION



**DISCLAIMER:**  
All measurements are indicative and are for marketing purposes only. All efforts have been made to ensure their accuracy, however these layouts are subject to change at the discretion of the developer and should not be relied upon as final. The actual area may vary from the stated area and the developer reserves the right to make the revisions/alterations, at its absolute discretion, without any liability whatsoever

## UNIT - 306

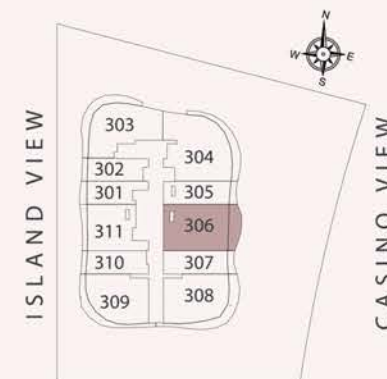
### 1 BEDROOM

LEVEL-03

Internal Living Area	1156.58 sq.ft.
Outdoor Living Area	199.99 sq.ft.
<b>Total Living Area</b>	<b>1356.58 sq.ft.</b>



## KEY PLAN



## KEY ELEVATION



**DISCLAIMER:**  
All measurements are indicative and are for marketing purposes only. All efforts have been made to ensure their accuracy, however these layouts are subject to change at the discretion of the developer and should not be relied upon as final. The actual area may vary from the stated area and the developer reserves the right to make the revisions/alterations, at its absolute discretion, without any liability whatsoever.

## UNIT - 307

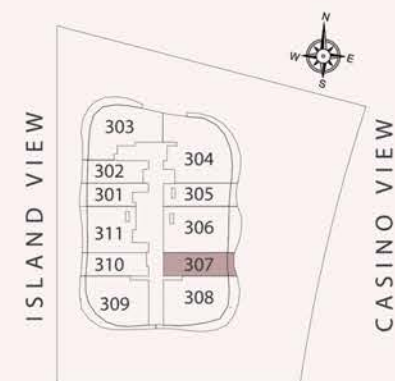
### STUDIO

LEVEL-03

Internal Living Area	577.70 sq.ft.
Outdoor Living Area	63.29 sq.ft.
<b>Total Living Area</b>	<b>640.99 sq.ft.</b>



## KEY PLAN



## KEY ELEVATION



**DISCLAIMER:**  
All measurements are indicative and are for marketing purposes only. All efforts have been made to ensure their accuracy, however these layouts are subject to change at the discretion of the developer and should not be relied upon as final. The actual area may vary from the stated area and the developer reserves the right to make the revisions/alterations, at its absolute discretion, without any liability whatsoever.

## UNIT - 308

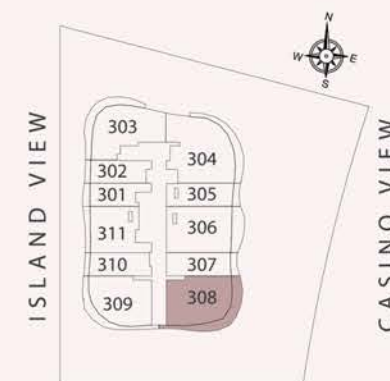
### 1 BEDROOM

LEVEL-03

Internal Living Area	1143.23 sq.ft.
Outdoor Living Area	344.77 sq.ft.
<b>Total Living Area</b>	<b>1488.00 sq.ft.</b>



## KEY PLAN



## KEY ELEVATION



**DISCLAIMER:**  
All measurements are indicative and are for marketing purposes only. All efforts have been made to ensure their accuracy, however these layouts are subject to change at the discretion of the developer and should not be relied upon as final. The actual area may vary from the stated area and the developer reserves the right to make the revisions/alterations, at its absolute discretion, without any liability whatsoever

## UNIT - 309

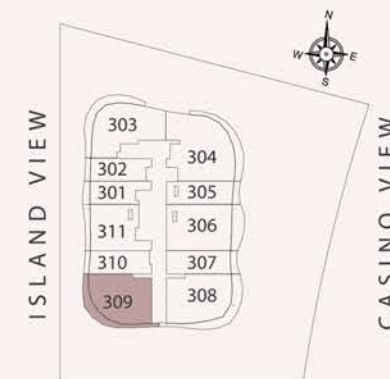
### 1 BEDROOM

LEVEL-03

Internal Living Area	1065.41 sq.ft.
Outdoor Living Area	244.45 sq.ft.
<b>Total Living Area</b>	<b>1309.86 sq.ft.</b>



## KEY PLAN



## KEY ELEVATION



**DISCLAIMER:**  
All measurements are indicative and are for marketing purposes only. All efforts have been made to ensure their accuracy, however these layouts are subject to change at the discretion of the developer and should not be relied upon as final. The actual area may vary from the stated area and the developer reserves the right to make the revisions/alterations, at its absolute discretion, without any liability whatsoever

## UNIT - 310

### STUDIO

LEVEL-03

Internal Living Area	545.51 sq.ft.
Outdoor Living Area	45.32 sq.ft.
<b>Total Living Area</b>	<b>590.83 sq.ft.</b>



## KEY PLAN



## KEY ELEVATION



**DISCLAIMER:**  
All measurements are indicative and are for marketing purposes only. All efforts have been made to ensure their accuracy, however these layouts are subject to change at the discretion of the developer and should not be relied upon as final. The actual area may vary from the stated area and the developer reserves the right to make the revisions/alterations, at its absolute discretion, without any liability whatsoever

## UNIT - 311

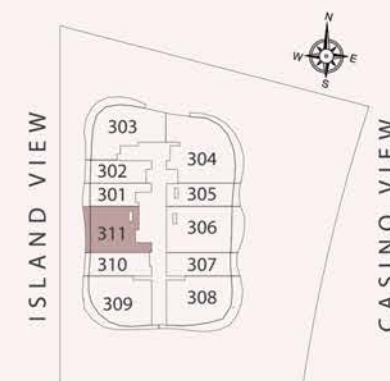
### 1 BEDROOM

LEVEL-03

Internal Living Area	888.56 sq.ft.
Outdoor Living Area	100.32 sq.ft.
Total Living Area	988.88 sq.ft.



## KEY PLAN



## KEY ELEVATION



**DISCLAIMER:**  
All measurements are indicative and are for marketing purposes only. All efforts have been made to ensure their accuracy, however these layouts are subject to change at the discretion of the developer and should not be relied upon as final. The actual area may vary from the stated area and the developer reserves the right to make the revisions/alterations, at its absolute discretion, without any liability whatsoever

## UNIT - 401

### STUDIO

LEVEL-04

Internal Living Area	453.91 sq.ft.
Outdoor Living Area	73.84 sq.ft.
<b>Total Living Area</b>	<b>527.75 sq.ft.</b>



## KEY PLAN



## KEY ELEVATION



## DISCLAIMER:

All measurements are indicative and are for marketing purposes only. All efforts have been made to ensure their accuracy, however these layouts are subject to change at the discretion of the developer and should not be relied upon as final. The actual area may vary from the stated area and the developer reserves the right to make the revisions/alterations, at its absolute discretion, without any liability whatsoever.

## UNIT - 402

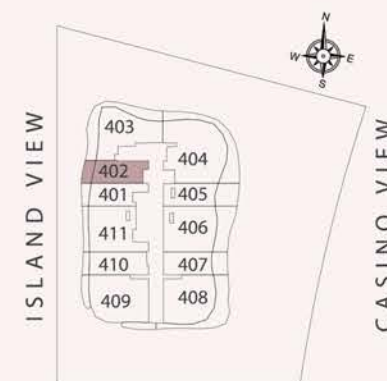
### STUDIO

LEVEL-04

Internal Living Area	466.08 sq.ft.
Outdoor Living Area	98.60 sq.ft.
<b>Total Living Area</b>	<b>564.67 sq.ft.</b>



## KEY PLAN



## KEY ELEVATION



**DISCLAIMER:**  
All measurements are indicative and are for marketing purposes only. All efforts have been made to ensure their accuracy, however these layouts are subject to change at the discretion of the developer and should not be relied upon as final. The actual area may vary from the stated area and the developer reserves the right to make the revisions/alterations, at its absolute discretion, without any liability whatsoever.

## UNIT - 403

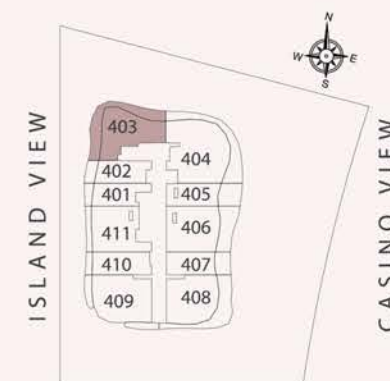
### 1 BEDROOM

LEVEL-04

Internal Living Area	885.33 sq.ft.
Outdoor Living Area	435.08 sq.ft.
<b>Total Living Area</b>	<b>1320.41 sq.ft.</b>



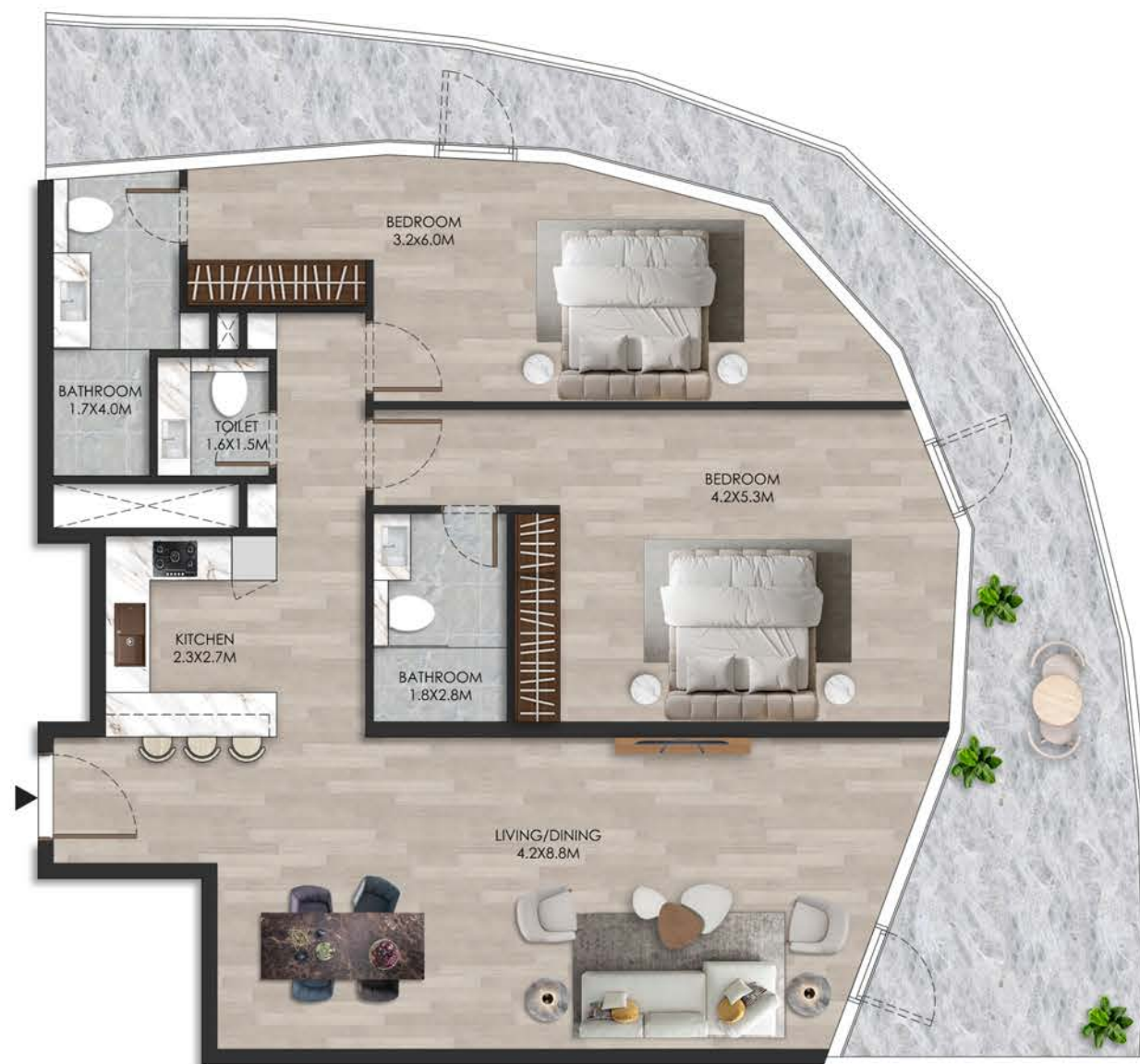
## KEY PLAN



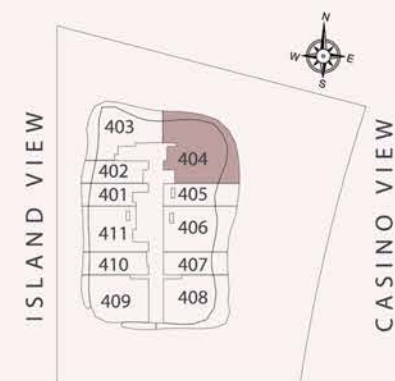
## KEY ELEVATION



**DISCLAIMER:**  
All measurements are indicative and are for marketing purposes only. All efforts have been made to ensure their accuracy, however these layouts are subject to change at the discretion of the developer and should not be relied upon as final. The actual area may vary from the stated area and the developer reserves the right to make the revisions/alterations, at its absolute discretion, without any liability whatsoever.



**KEY PLAN**



**KEY ELEVATION**



**DISCLAIMER:**  
All measurements are indicative and are for marketing purposes only. All efforts have been made to ensure their accuracy, however these layouts are subject to change at the discretion of the developer and should not be relied upon as final. The actual area may vary from the stated area and the developer reserves the right to make the revisions/alterations, at its absolute discretion, without any liability whatsoever

## UNIT - 405

### STUDIO

LEVEL-04

Internal Living Area	461.88 sq.ft.
Outdoor Living Area	205.27 sq.ft.
Total Living Area	667.15 sq.ft.



## KEY PLAN



## KEY ELEVATION



**DISCLAIMER:**  
All measurements are indicative and are for marketing purposes only. All efforts have been made to ensure their accuracy, however these layouts are subject to change at the discretion of the developer and should not be relied upon as final. The actual area may vary from the stated area and the developer reserves the right to make the revisions/alterations, at its absolute discretion, without any liability whatsoever.

## UNIT - 406

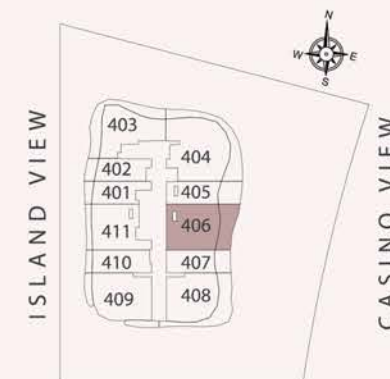
### 1 BEDROOM

LEVEL-04

Internal Living Area	938.40 sq.ft.
Outdoor Living Area	292.02 sq.ft.
Total Living Area	1230.42 sq.ft.



## KEY PLAN



## KEY ELEVATION



**DISCLAIMER:**  
All measurements are indicative and are for marketing purposes only. All efforts have been made to ensure their accuracy, however these layouts are subject to change at the discretion of the developer and should not be relied upon as final. The actual area may vary from the stated area and the developer reserves the right to make the revisions/alterations, at its absolute discretion, without any liability whatsoever.

## UNIT - 407

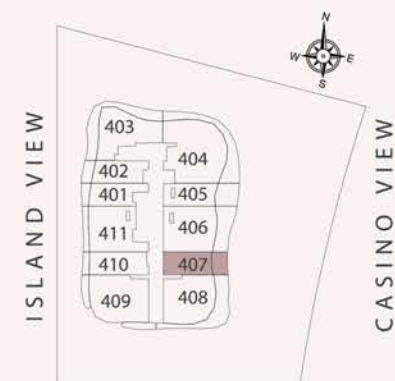
### STUDIO

LEVEL-04

Internal Living Area	443.47 sq.ft.
Outdoor Living Area	141.33 sq.ft.
Total Living Area	584.80 sq.ft.



## KEY PLAN



## KEY ELEVATION



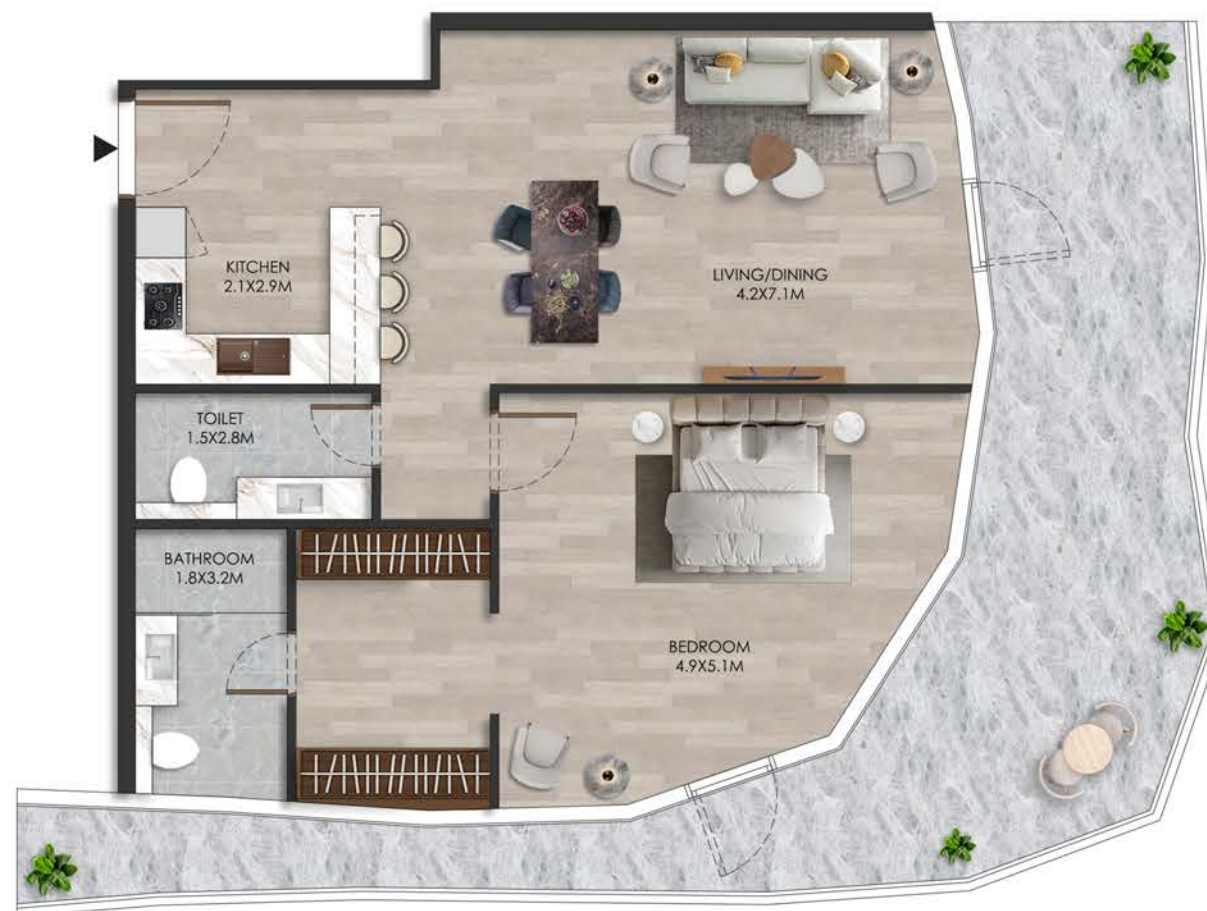
**DISCLAIMER:**  
All measurements are indicative and are for marketing purposes only. All efforts have been made to ensure their accuracy, however these layouts are subject to change at the discretion of the developer and should not be relied upon as final. The actual area may vary from the stated area and the developer reserves the right to make the revisions/alterations, at its absolute discretion, without any liability whatsoever.

## UNIT - 408

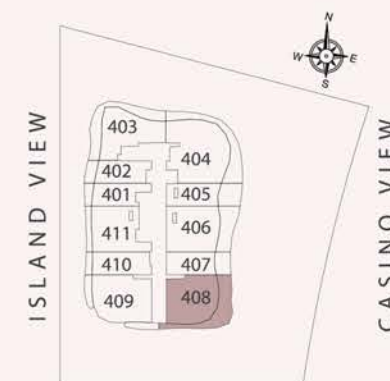
### 1 BEDROOM

LEVEL-04

Internal Living Area	934.52 sq.ft.
Outdoor Living Area	423.13 sq.ft.
<b>Total Living Area</b>	<b>1357.65 sq.ft.</b>



## KEY PLAN



## KEY ELEVATION



**DISCLAIMER:**  
All measurements are indicative and are for marketing purposes only. All efforts have been made to ensure their accuracy, however these layouts are subject to change at the discretion of the developer and should not be relied upon as final. The actual area may vary from the stated area and the developer reserves the right to make the revisions/alterations, at its absolute discretion, without any liability whatsoever

## UNIT- 409

### 1 BEDROOM

LEVEL-04

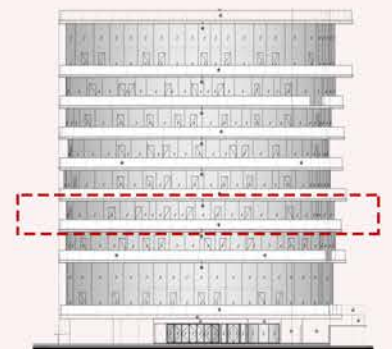
Internal Living Area	1050.34 sq.ft.
Outdoor Living Area	181.05 sq.ft.
<b>Total Living Area</b>	<b>1231.39 sq.ft.</b>



## KEY PLAN



## KEY ELEVATION



**DISCLAIMER:**  
All measurements are indicative and are for marketing purposes only. All efforts have been made to ensure their accuracy, however these layouts are subject to change at the discretion of the developer and should not be relied upon as final. The actual area may vary from the stated area and the developer reserves the right to make the revisions/alterations, at its absolute discretion, without any liability whatsoever.

## UNIT - 410

### STUDIO

LEVEL-04

Internal Living Area	529.91 sq.ft.
Outdoor Living Area	59.74 sq.ft.
<b>Total Living Area</b>	<b>589.65 sq.ft.</b>



## KEY PLAN



## KEY ELEVATION



**DISCLAIMER:**  
All measurements are indicative and are for marketing purposes only. All efforts have been made to ensure their accuracy, however these layouts are subject to change at the discretion of the developer and should not be relied upon as final. The actual area may vary from the stated area and the developer reserves the right to make the revisions/alterations, at its absolute discretion, without any liability whatsoever.

## UNIT- 411

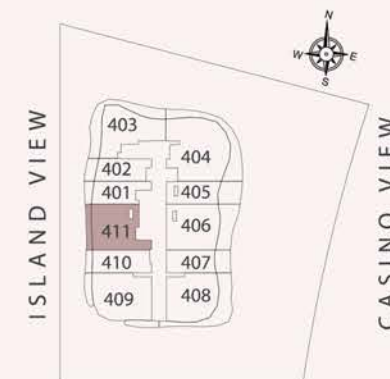
### 1 BEDROOM

LEVEL-04

Internal Living Area	881.67 sq.ft.
Outdoor Living Area	102.47 sq.ft.
<b>Total Living Area</b>	<b>984.14 sq.ft.</b>



## KEY PLAN



## KEY ELEVATION



**DISCLAIMER:**  
All measurements are indicative and are for marketing purposes only. All efforts have been made to ensure their accuracy, however these layouts are subject to change at the discretion of the developer and should not be relied upon as final. The actual area may vary from the stated area and the developer reserves the right to make the revisions/alterations, at its absolute discretion, without any liability whatsoever.

## UNIT - 501

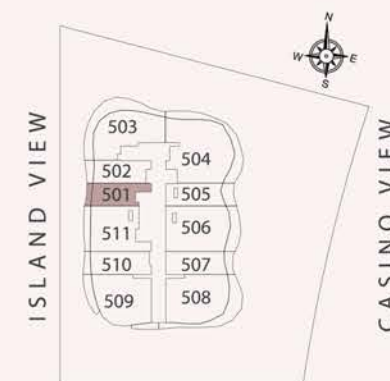
### STUDIO

LEVEL-05

Internal Living Area	459.30 sq.ft.
Outdoor Living Area	50.48 sq.ft.
Total Living Area	509.78 sq.ft.



## KEY PLAN



## KEY ELEVATION



**DISCLAIMER:**  
All measurements are indicative and are for marketing purposes only. All efforts have been made to ensure their accuracy, however these layouts are subject to change at the discretion of the developer and should not be relied upon as final. The actual area may vary from the stated area and the developer reserves the right to make the revisions/alterations, at its absolute discretion, without any liability whatsoever

## UNIT - 502

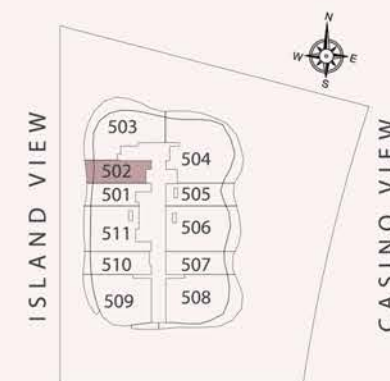
### STUDIO

LEVEL-05

Internal Living Area	488.90 sq.ft.
Outdoor Living Area	70.40 sq.ft.
Total Living Area	559.29 sq.ft.



## KEY PLAN



## KEY ELEVATION



**DISCLAIMER:**  
All measurements are indicative and are for marketing purposes only. All efforts have been made to ensure their accuracy, however these layouts are subject to change at the discretion of the developer and should not be relied upon as final. The actual area may vary from the stated area and the developer reserves the right to make the revisions/alterations, at its absolute discretion, without any liability whatsoever.

## UNIT - 503

### 1 BEDROOM

LEVEL-05

Internal Living Area	1016.87 sq.ft.
Outdoor Living Area	448.86 sq.ft.
Total Living Area	1465.72 sq.ft.



## KEY PLAN



## KEY ELEVATION



**DISCLAIMER:**  
All measurements are indicative and are for marketing purposes only. All efforts have been made to ensure their accuracy, however these layouts are subject to change at the discretion of the developer and should not be relied upon as final. The actual area may vary from the stated area and the developer reserves the right to make the revisions/alterations, at its absolute discretion, without any liability whatsoever

## UNIT - 504

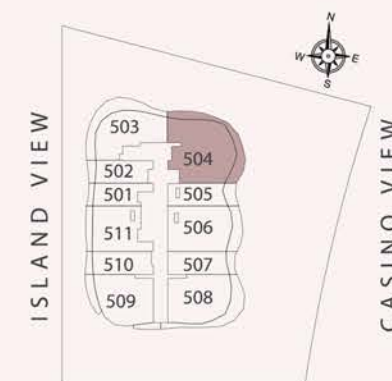
### 2 BEDROOM

LEVEL-05

Internal Living Area	1491.34 sq.ft.
Outdoor Living Area	364.25 sq.ft.
<b>Total Living Area</b>	<b>1855.59 sq.ft.</b>



## KEY PLAN



## KEY ELEVATION



**DISCLAIMER:**  
All measurements are indicative and are for marketing purposes only. All efforts have been made to ensure their accuracy, however these layouts are subject to change at the discretion of the developer and should not be relied upon as final. The actual area may vary from the stated area and the developer reserves the right to make the revisions/alterations, at its absolute discretion, without any liability whatsoever

## UNIT - 505

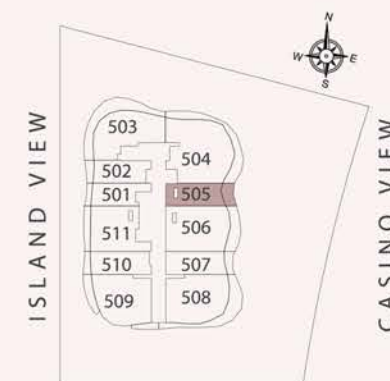
### STUDIO

LEVEL-05

Internal Living Area	500.09 sq.ft.
Outdoor Living Area	106.78 sq.ft.
<b>Total Living Area</b>	<b>606.87 sq.ft.</b>



## KEY PLAN



## KEY ELEVATION



**DISCLAIMER:**  
All measurements are indicative and are for marketing purposes only. All efforts have been made to ensure their accuracy, however these layouts are subject to change at the discretion of the developer and should not be relied upon as final. The actual area may vary from the stated area and the developer reserves the right to make the revisions/alterations, at its absolute discretion, without any liability whatsoever.

## UNIT - 506

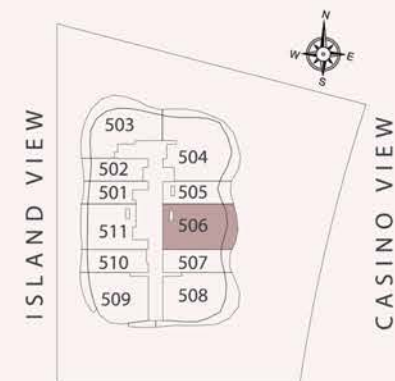
### 1 BEDROOM

LEVEL-05

Internal Living Area	1117.19 sq.ft.
Outdoor Living Area	198.06 sq.ft.
Total Living Area	1315.24 sq.ft.



## KEY PLAN



## KEY ELEVATION



### DISCLAIMER:

All measurements are indicative and are for marketing purposes only. All efforts have been made to ensure their accuracy, however these layouts are subject to change at the discretion of the developer and should not be relied upon as final. The actual area may vary from the stated area and the developer reserves the right to make the revisions/alterations, at its absolute discretion, without any liability whatsoever.

## UNIT - 507

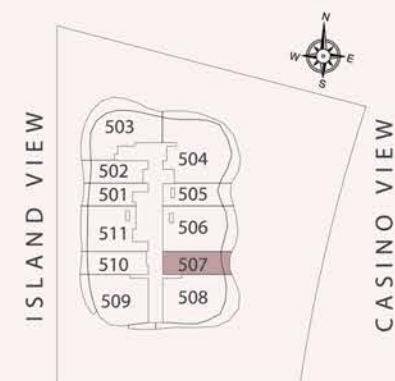
### STUDIO

LEVEL-05

Internal Living Area	538.84 sq.ft.
Outdoor Living Area	74.49 sq.ft.
<b>Total Living Area</b>	<b>613.33 sq.ft.</b>



### KEY PLAN



### KEY ELEVATION



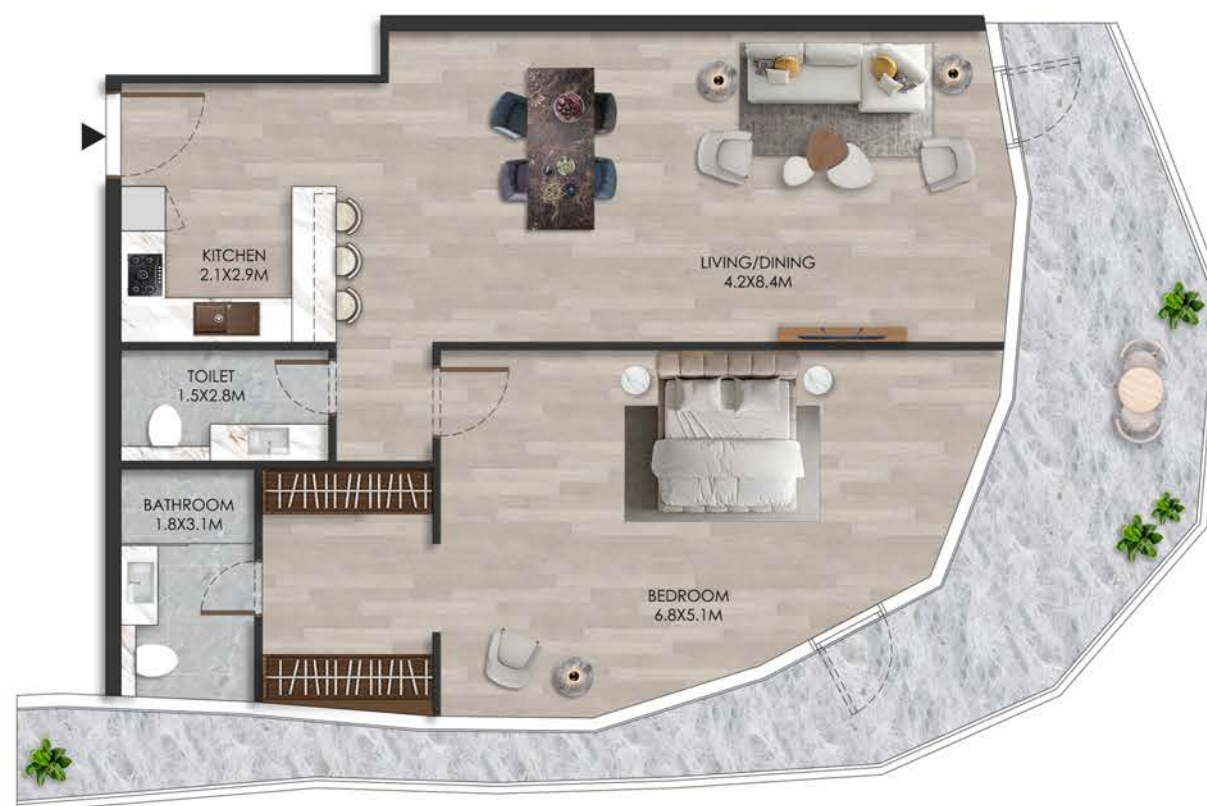
**DISCLAIMER:**  
All measurements are indicative and are for marketing purposes only. All efforts have been made to ensure their accuracy, however these layouts are subject to change at the discretion of the developer and should not be relied upon as final. The actual area may vary from the stated area and the developer reserves the right to make the revisions/alterations, at its absolute discretion, without any liability whatsoever

## UNIT - 508

### 1 BEDROOM

LEVEL-05

Internal Living Area	1121.06 sq.ft.
Outdoor Living Area	376.52 sq.ft.
<b>Total Living Area</b>	<b>1497.58 sq.ft.</b>



## KEY PLAN



## KEY ELEVATION



**DISCLAIMER:**  
All measurements are indicative and are for marketing purposes only. All efforts have been made to ensure their accuracy, however these layouts are subject to change at the discretion of the developer and should not be relied upon as final. The actual area may vary from the stated area and the developer reserves the right to make the revisions/alterations, at its absolute discretion, without any liability whatsoever

## UNIT- 509

### 1 BEDROOM

LEVEL-05

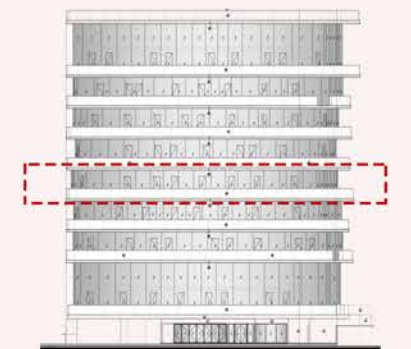
Internal Living Area	1051.85 sq.ft.
Outdoor Living Area	186.43 sq.ft.
<b>Total Living Area</b>	<b>1238.28 sq.ft.</b>



## KEY PLAN



## KEY ELEVATION



**DISCLAIMER:**  
All measurements are indicative and are for marketing purposes only. All efforts have been made to ensure their accuracy, however these layouts are subject to change at the discretion of the developer and should not be relied upon as final. The actual area may vary from the stated area and the developer reserves the right to make the revisions/alterations, at its absolute discretion, without any liability whatsoever.

## UNIT - 510

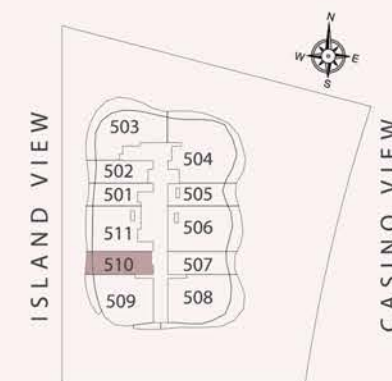
### STUDIO

LEVEL-05

Internal Living Area	542.39 sq.ft.
Outdoor Living Area	60.92 sq.ft.
<b>Total Living Area</b>	<b>603.32 sq.ft.</b>



### KEY PLAN



### KEY ELEVATION



**DISCLAIMER:**  
All measurements are indicative and are for marketing purposes only. All efforts have been made to ensure their accuracy, however these layouts are subject to change at the discretion of the developer and should not be relied upon as final. The actual area may vary from the stated area and the developer reserves the right to make the revisions/alterations, at its absolute discretion, without any liability whatsoever

## UNIT- 511

### 1 BEDROOM

LEVEL-05

Internal Living Area	897.39 sq.ft.
Outdoor Living Area	118.73 sq.ft.
Total Living Area	1016.11 sq.ft.



## KEY PLAN



## KEY ELEVATION



**DISCLAIMER:**  
All measurements are indicative and are for marketing purposes only. All efforts have been made to ensure their accuracy, however these layouts are subject to change at the discretion of the developer and should not be relied upon as final. The actual area may vary from the stated area and the developer reserves the right to make the revisions/alterations, at its absolute discretion, without any liability whatsoever.

## UNIT - 601

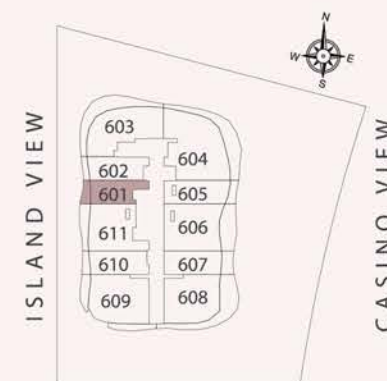
### STUDIO

LEVEL-06

Internal Living Area	433.79 sq.ft.
Outdoor Living Area	73.63 sq.ft.
<b>Total Living Area</b>	<b>507.41 sq.ft.</b>



## KEY PLAN



## KEY ELEVATION



**DISCLAIMER:**  
All measurements are indicative and are for marketing purposes only. All efforts have been made to ensure their accuracy, however these layouts are subject to change at the discretion of the developer and should not be relied upon as final. The actual area may vary from the stated area and the developer reserves the right to make the revisions/alterations, at its absolute discretion, without any liability whatsoever.

## UNIT - 602

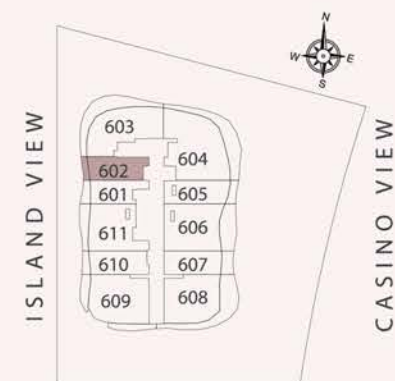
### STUDIO

LEVEL-06

Internal Living Area	498.69 sq.ft.
Outdoor Living Area	53.07 sq.ft.
<b>Total Living Area</b>	<b>551.76 sq.ft.</b>



## KEY PLAN



## KEY ELEVATION



**DISCLAIMER:**  
All measurements are indicative and are for marketing purposes only. All efforts have been made to ensure their accuracy, however these layouts are subject to change at the discretion of the developer and should not be relied upon as final. The actual area may vary from the stated area and the developer reserves the right to make the revisions/alterations, at its absolute discretion, without any liability whatsoever

## UNIT - 603

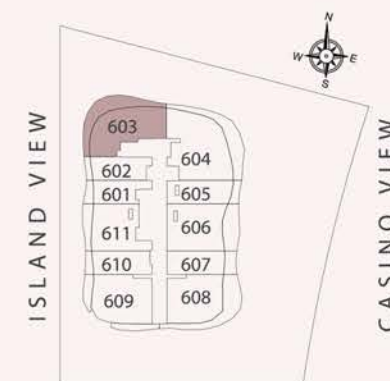
### 1 BEDROOM

LEVEL-06

Internal Living Area	1030.54 sq.ft.
Outdoor Living Area	424.31 sq.ft.
<b>Total Living Area</b>	<b>1454.85 sq.ft.</b>



## KEY PLAN



## KEY ELEVATION



**DISCLAIMER:**  
All measurements are indicative and are for marketing purposes only. All efforts have been made to ensure their accuracy, however these layouts are subject to change at the discretion of the developer and should not be relied upon as final. The actual area may vary from the stated area and the developer reserves the right to make the revisions/alterations, at its absolute discretion, without any liability whatsoever

## UNIT - 604

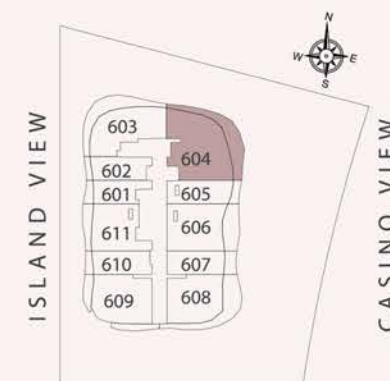
### 2 BEDROOM

LEVEL-06

Internal Living Area	1403.51 sq.ft.
Outdoor Living Area	427.43 sq.ft.
<b>Total Living Area</b>	<b>1830.94 sq.ft.</b>



## KEY PLAN



## KEY ELEVATION



**DISCLAIMER:**  
All measurements are indicative and are for marketing purposes only. All efforts have been made to ensure their accuracy, however these layouts are subject to change at the discretion of the developer and should not be relied upon as final. The actual area may vary from the stated area and the developer reserves the right to make the revisions/alterations, at its absolute discretion, without any liability whatsoever.

## UNIT - 605

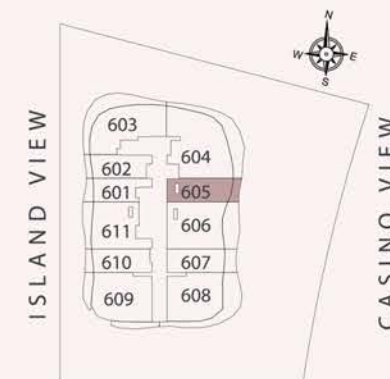
### STUDIO

LEVEL-06

Internal Living Area	553.37 sq.ft.
Outdoor Living Area	73.52 sq.ft.
<b>Total Living Area</b>	<b>626.89 sq.ft.</b>



## KEY PLAN



## KEY ELEVATION



**DISCLAIMER:**  
All measurements are indicative and are for marketing purposes only. All efforts have been made to ensure their accuracy, however these layouts are subject to change at the discretion of the developer and should not be relied upon as final. The actual area may vary from the stated area and the developer reserves the right to make the revisions/alterations, at its absolute discretion, without any liability whatsoever.

## UNIT - 606

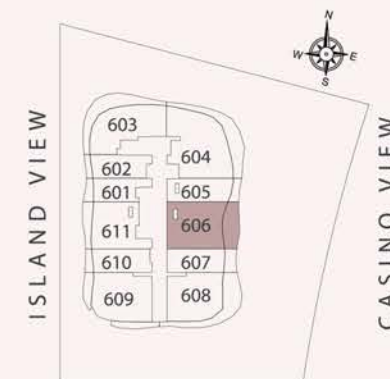
### 1 BEDROOM

LEVEL-06

Internal Living Area	989.20 sq.ft.
Outdoor Living Area	265.44 sq.ft.
Total Living Area	1254.64 sq.ft.



## KEY PLAN



## KEY ELEVATION



**DISCLAIMER:**  
All measurements are indicative and are for marketing purposes only. All efforts have been made to ensure their accuracy, however these layouts are subject to change at the discretion of the developer and should not be relied upon as final. The actual area may vary from the stated area and the developer reserves the right to make the revisions/alterations, at its absolute discretion, without any liability whatsoever.

## UNIT - 607

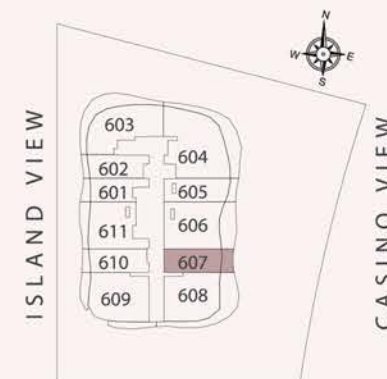
### STUDIO

LEVEL-06

Internal Living Area	507.52 sq.ft.
Outdoor Living Area	105.27 sq.ft.
<b>Total Living Area</b>	<b>612.79 sq.ft.</b>



### KEY PLAN



### KEY ELEVATION



**DISCLAIMER:**  
All measurements are indicative and are for marketing purposes only. All efforts have been made to ensure their accuracy, however these layouts are subject to change at the discretion of the developer and should not be relied upon as final. The actual area may vary from the stated area and the developer reserves the right to make the revisions/alterations, at its absolute discretion, without any liability whatsoever

## UNIT - 608

### 1 BEDROOM

LEVEL-06

Internal Living Area	955.84 sq.ft.
Outdoor Living Area	444.33 sq.ft.
<b>Total Living Area</b>	<b>1400.17 sq.ft.</b>



## KEY PLAN



## KEY ELEVATION



**DISCLAIMER:**  
All measurements are indicative and are for marketing purposes only. All efforts have been made to ensure their accuracy, however these layouts are subject to change at the discretion of the developer and should not be relied upon as final. The actual area may vary from the stated area and the developer reserves the right to make the revisions/alterations, at its absolute discretion, without any liability whatsoever.

## UNIT - 609

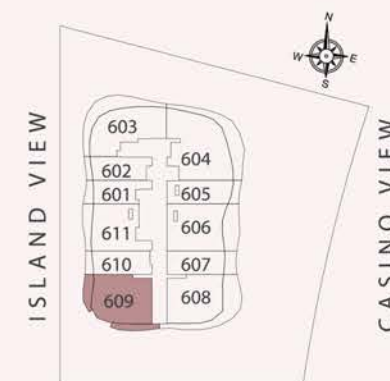
### 1 BEDROOM

LEVEL-06

Internal Living Area	1038.29 sq.ft.
Outdoor Living Area	224.32 sq.ft.
Total Living Area	1262.61 sq.ft.



## KEY PLAN



## KEY ELEVATION



**DISCLAIMER:**  
All measurements are indicative and are for marketing purposes only. All efforts have been made to ensure their accuracy, however these layouts are subject to change at the discretion of the developer and should not be relied upon as final. The actual area may vary from the stated area and the developer reserves the right to make the revisions/alterations, at its absolute discretion, without any liability whatsoever

## UNIT - 610

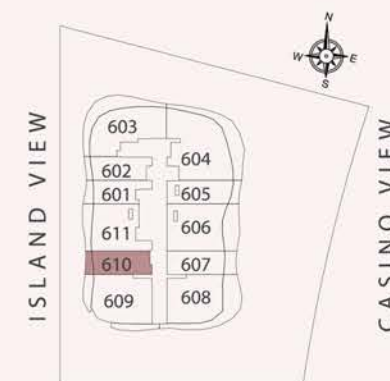
### STUDIO

LEVEL-06

Internal Living Area	513.33	sq.ft.
Outdoor Living Area	64.37	sq.ft.
Total Living Area	577.70	sq.ft.



## KEY PLAN



## KEY ELEVATION



**DISCLAIMER:**  
All measurements are indicative and are for marketing purposes only. All efforts have been made to ensure their accuracy, however these layouts are subject to change at the discretion of the developer and should not be relied upon as final. The actual area may vary from the stated area and the developer reserves the right to make the revisions/alterations, at its absolute discretion, without any liability whatsoever

## UNIT - 611

### 1 BEDROOM

LEVEL-06

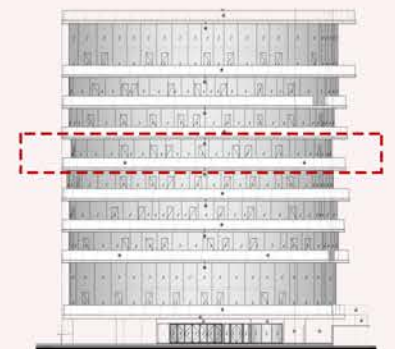
Internal Living Area	850.03 sq.ft.
Outdoor Living Area	147.79 sq.ft.
Total Living Area	997.81 sq.ft.



## KEY PLAN



## KEY ELEVATION



**DISCLAIMER:**  
All measurements are indicative and are for marketing purposes only. All efforts have been made to ensure their accuracy, however these layouts are subject to change at the discretion of the developer and should not be relied upon as final. The actual area may vary from the stated area and the developer reserves the right to make the revisions/alterations, at its absolute discretion, without any liability whatsoever.

## UNIT - 701

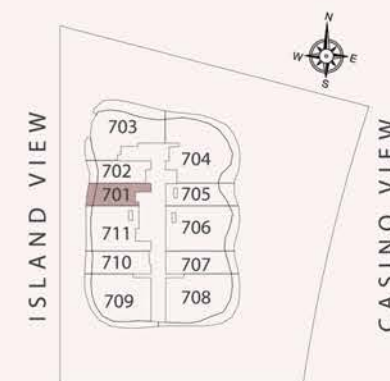
### STUDIO

LEVEL-07

Internal Living Area	433.79 sq.ft.
Outdoor Living Area	71.26 sq.ft.
<b>Total Living Area</b>	<b>505.04 sq.ft.</b>



## KEY PLAN



## KEY ELEVATION



**DISCLAIMER:**  
All measurements are indicative and are for marketing purposes only. All efforts have been made to ensure their accuracy, however these layouts are subject to change at the discretion of the developer and should not be relied upon as final. The actual area may vary from the stated area and the developer reserves the right to make the revisions/alterations, at its absolute discretion, without any liability whatsoever.

## UNIT - 702

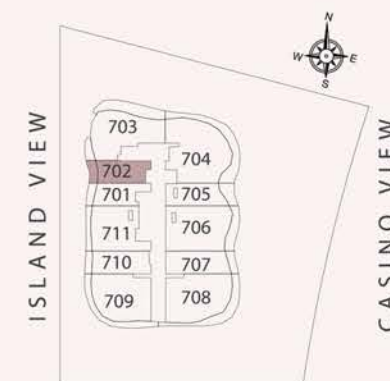
### STUDIO

LEVEL-07

Internal Living Area	458.87 sq.ft.
Outdoor Living Area	80.94 sq.ft.
Total Living Area	539.81 sq.ft.



## KEY PLAN



## KEY ELEVATION



**DISCLAIMER:**  
All measurements are indicative and are for marketing purposes only. All efforts have been made to ensure their accuracy, however these layouts are subject to change at the discretion of the developer and should not be relied upon as final. The actual area may vary from the stated area and the developer reserves the right to make the revisions/alterations, at its absolute discretion, without any liability whatsoever.

## UNIT - 703

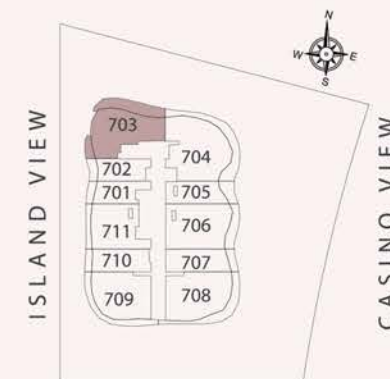
### 1 BEDROOM

LEVEL-07

Internal Living Area	1055.51 sq.ft.
Outdoor Living Area	369.96 sq.ft.
<b>Total Living Area</b>	<b>1425.46 sq.ft.</b>



## KEY PLAN



## KEY ELEVATION



### DISCLAIMER:

All measurements are indicative and are for marketing purposes only. All efforts have been made to ensure their accuracy, however these layouts are subject to change at the discretion of the developer and should not be relied upon as final. The actual area may vary from the stated area and the developer reserves the right to make the revisions/alterations, at its absolute discretion, without any liability whatsoever.

## UNIT - 704

### 2 BEDROOM

LEVEL-07

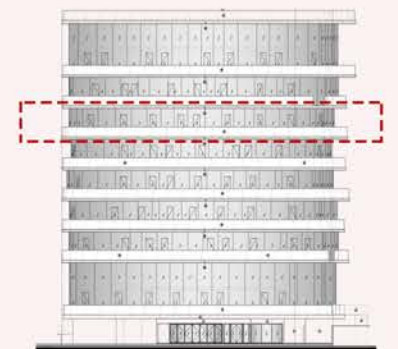
Internal Living Area	1414.70 sq.ft.
Outdoor Living Area	389.55 sq.ft.
Total Living Area	1804.25 sq.ft.



## KEY PLAN



## KEY ELEVATION



**DISCLAIMER:**  
All measurements are indicative and are for marketing purposes only. All efforts have been made to ensure their accuracy, however these layouts are subject to change at the discretion of the developer and should not be relied upon as final. The actual area may vary from the stated area and the developer reserves the right to make the revisions/alterations, at its absolute discretion, without any liability whatsoever.

## UNIT - 705

### STUDIO

LEVEL-07

Internal Living Area	510.32 sq.ft.
Outdoor Living Area	113.13 sq.ft.
Total Living Area	623.45 sq.ft.



## KEY PLAN



## KEY ELEVATION



**DISCLAIMER:**  
All measurements are indicative and are for marketing purposes only. All efforts have been made to ensure their accuracy, however these layouts are subject to change at the discretion of the developer and should not be relied upon as final. The actual area may vary from the stated area and the developer reserves the right to make the revisions/alterations, at its absolute discretion, without any liability whatsoever.

## UNIT - 706

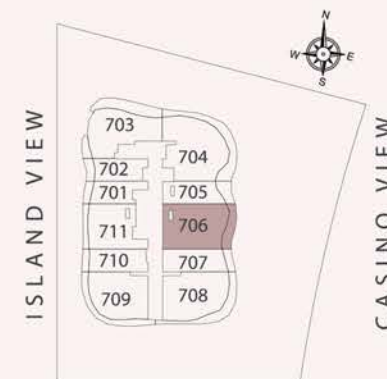
### 1 BEDROOM

LEVEL-07

Internal Living Area	1139.68 sq.ft.
Outdoor Living Area	166.52 sq.ft.
<b>Total Living Area</b>	<b>1306.20 sq.ft.</b>



## KEY PLAN



## KEY ELEVATION



### DISCLAIMER:

All measurements are indicative and are for marketing purposes only. All efforts have been made to ensure their accuracy, however these layouts are subject to change at the discretion of the developer and should not be relied upon as final. The actual area may vary from the stated area and the developer reserves the right to make the revisions/alterations, at its absolute discretion, without any liability whatsoever.

## UNIT - 707

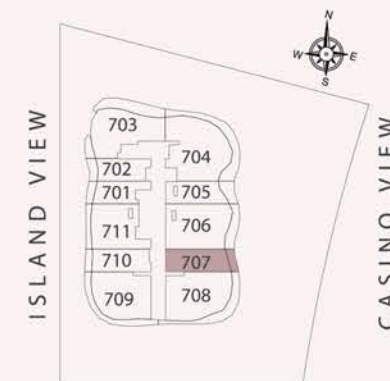
### STUDIO

LEVEL-07

Internal Living Area	575.55 sq.ft.
Outdoor Living Area	72.76 sq.ft.
<b>Total Living Area</b>	<b>648.31 sq.ft.</b>



### KEY PLAN



### KEY ELEVATION



**DISCLAIMER:**  
All measurements are indicative and are for marketing purposes only. All efforts have been made to ensure their accuracy, however these layouts are subject to change at the discretion of the developer and should not be relied upon as final. The actual area may vary from the stated area and the developer reserves the right to make the revisions/alterations, at its absolute discretion, without any liability whatsoever.

## UNIT - 708

### 1 BEDROOM

LEVEL-07

Internal Living Area	1160.78 sq.ft.
Outdoor Living Area	300.10 sq.ft.
<b>Total Living Area</b>	<b>1460.88 sq.ft.</b>



## KEY PLAN



## KEY ELEVATION



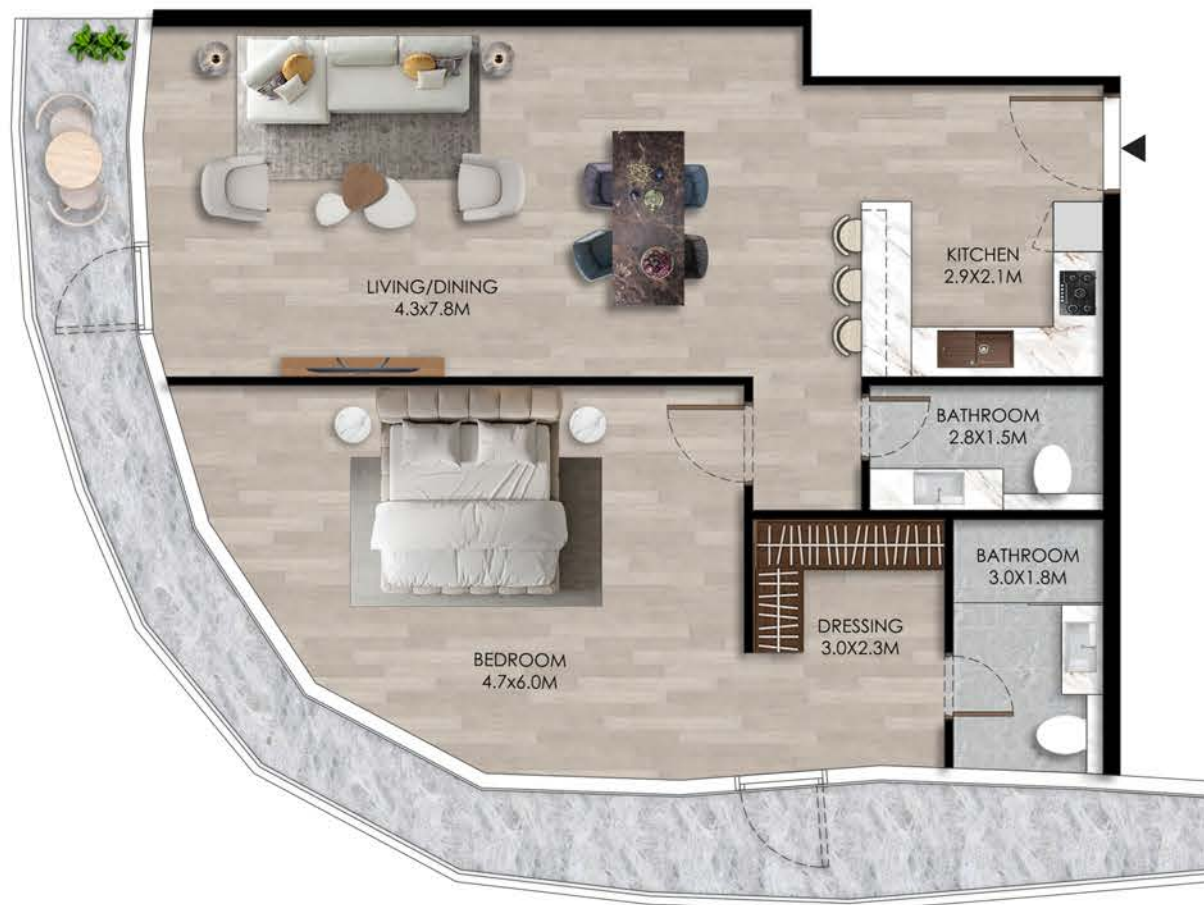
**DISCLAIMER:**  
All measurements are indicative and are for marketing purposes only. All efforts have been made to ensure their accuracy, however these layouts are subject to change at the discretion of the developer and should not be relied upon as final. The actual area may vary from the stated area and the developer reserves the right to make the revisions/alterations, at its absolute discretion, without any liability whatsoever

## UNIT - 709

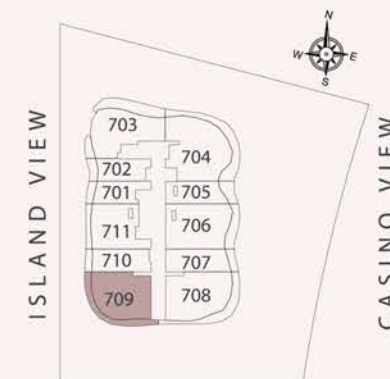
### 1 BEDROOM

LEVEL-07

Internal Living Area	1046.47 sq.ft.
Outdoor Living Area	257.26 sq.ft.
<b>Total Living Area</b>	<b>1303.72 sq.ft.</b>



## KEY PLAN



## KEY ELEVATION



**DISCLAIMER:**  
All measurements are indicative and are for marketing purposes only. All efforts have been made to ensure their accuracy, however these layouts are subject to change at the discretion of the developer and should not be relied upon as final. The actual area may vary from the stated area and the developer reserves the right to make the revisions/alterations, at its absolute discretion, without any liability whatsoever

## UNIT - 710

### STUDIO

LEVEL-07

Internal Living Area	531.63 sq.ft.
Outdoor Living Area	63.72 sq.ft.
<b>Total Living Area</b>	<b>595.35 sq.ft.</b>



## KEY PLAN



## KEY ELEVATION



## DISCLAIMER:

All measurements are indicative and are for marketing purposes only. All efforts have been made to ensure their accuracy, however these layouts are subject to change at the discretion of the developer and should not be relied upon as final. The actual area may vary from the stated area and the developer reserves the right to make the revisions/alterations, at its absolute discretion, without any liability whatsoever.

## UNIT - 711

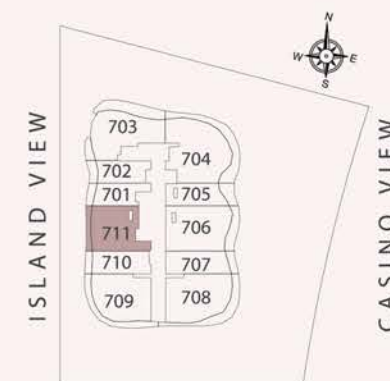
### 1 BEDROOM

LEVEL-07

Internal Living Area	889.64 sq.ft.
Outdoor Living Area	96.55 sq.ft.
<b>Total Living Area</b>	<b>986.19 sq.ft.</b>



## KEY PLAN



## KEY ELEVATION



**DISCLAIMER:**  
All measurements are indicative and are for marketing purposes only. All efforts have been made to ensure their accuracy, however these layouts are subject to change at the discretion of the developer and should not be relied upon as final. The actual area may vary from the stated area and the developer reserves the right to make the revisions/alterations, at its absolute discretion, without any liability whatsoever.

## UNIT - 801

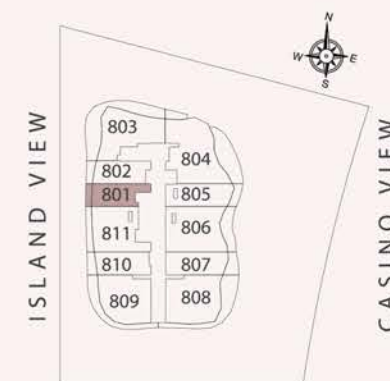
### STUDIO

LEVEL-08

Internal Living Area	457.14 sq.ft.
Outdoor Living Area	55.76 sq.ft.
Total Living Area	512.90 sq.ft.



## KEY PLAN



## KEY ELEVATION



**DISCLAIMER:**  
All measurements are indicative and are for marketing purposes only. All efforts have been made to ensure their accuracy, however these layouts are subject to change at the discretion of the developer and should not be relied upon as final. The actual area may vary from the stated area and the developer reserves the right to make the revisions/alterations, at its absolute discretion, without any liability whatsoever.

## UNIT - 802

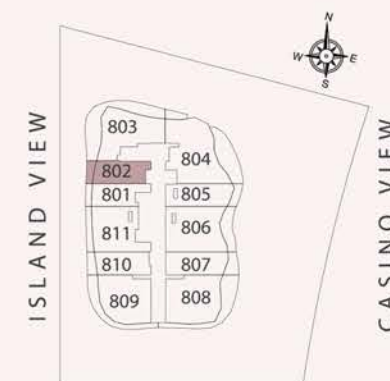
### STUDIO

LEVEL-08

Internal Living Area	482.65 sq.ft.
Outdoor Living Area	70.29 sq.ft.
<b>Total Living Area</b>	<b>552.94 sq.ft.</b>



## KEY PLAN



## KEY ELEVATION



**DISCLAIMER:**  
All measurements are indicative and are for marketing purposes only. All efforts have been made to ensure their accuracy, however these layouts are subject to change at the discretion of the developer and should not be relied upon as final. The actual area may vary from the stated area and the developer reserves the right to make the revisions/alterations, at its absolute discretion, without any liability whatsoever.

## UNIT - 803

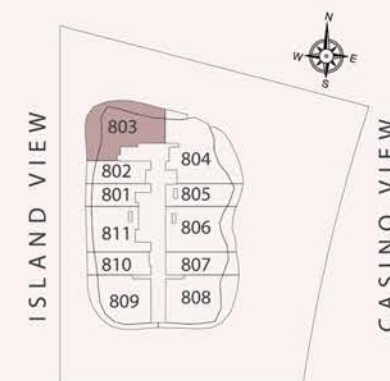
### 1 BEDROOM

LEVEL-08

Internal Living Area	932.37 sq.ft.
Outdoor Living Area	561.12 sq.ft.
<b>Total Living Area</b>	<b>1493.49 sq.ft.</b>



## KEY PLAN



## KEY ELEVATION



**DISCLAIMER:**  
All measurements are indicative and are for marketing purposes only. All efforts have been made to ensure their accuracy, however these layouts are subject to change at the discretion of the developer and should not be relied upon as final. The actual area may vary from the stated area and the developer reserves the right to make the revisions/alterations, at its absolute discretion, without any liability whatsoever

## UNIT - 804

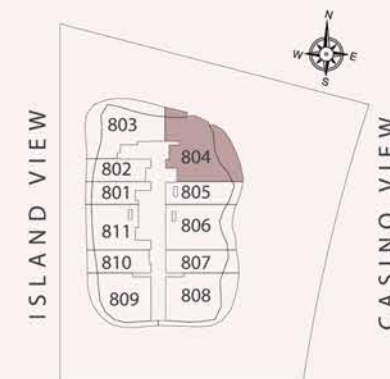
### 2 BEDROOM

LEVEL-08

Internal Living Area	1231.71 sq.ft.
Outdoor Living Area	428.83 sq.ft.
Total Living Area	1660.55 sq.ft.



## KEY PLAN



## KEY ELEVATION



**DISCLAIMER:**  
All measurements are indicative and are for marketing purposes only. All efforts have been made to ensure their accuracy, however these layouts are subject to change at the discretion of the developer and should not be relied upon as final. The actual area may vary from the stated area and the developer reserves the right to make the revisions/alterations, at its absolute discretion, without any liability whatsoever.

## UNIT - 805

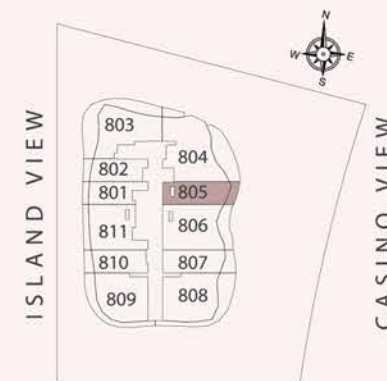
### STUDIO

LEVEL-08

Internal Living Area	584.37 sq.ft.
Outdoor Living Area	80.62 sq.ft.
<b>Total Living Area</b>	<b>664.99 sq.ft.</b>



## KEY PLAN



## KEY ELEVATION



**DISCLAIMER:**  
All measurements are indicative and are for marketing purposes only. All efforts have been made to ensure their accuracy, however these layouts are subject to change at the discretion of the developer and should not be relied upon as final. The actual area may vary from the stated area and the developer reserves the right to make the revisions/alterations, at its absolute discretion, without any liability whatsoever.

## UNIT - 806

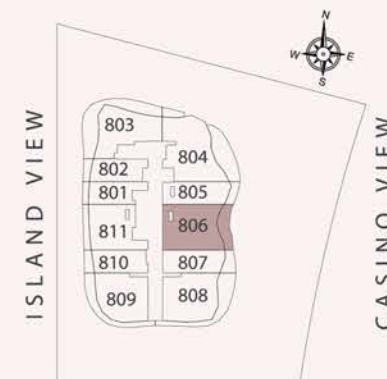
### 1 BEDROOM

LEVEL-08

Internal Living Area	1040.33 sq.ft.
Outdoor Living Area	197.41 sq.ft.
Total Living Area	1237.74 sq.ft.



## KEY PLAN



## KEY ELEVATION



**DISCLAIMER:**  
All measurements are indicative and are for marketing purposes only. All efforts have been made to ensure their accuracy, however these layouts are subject to change at the discretion of the developer and should not be relied upon as final. The actual area may vary from the stated area and the developer reserves the right to make the revisions/alterations, at its absolute discretion, without any liability whatsoever.

## UNIT - 807

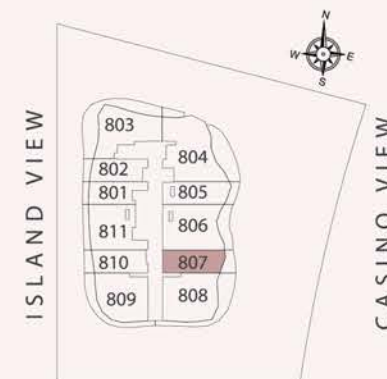
### STUDIO

LEVEL-08

Internal Living Area	555.31 sq.ft.
Outdoor Living Area	104.30 sq.ft.
<b>Total Living Area</b>	<b>659.61 sq.ft.</b>



### KEY PLAN



### KEY ELEVATION



**DISCLAIMER:**  
All measurements are indicative and are for marketing purposes only. All efforts have been made to ensure their accuracy, however these layouts are subject to change at the discretion of the developer and should not be relied upon as final. The actual area may vary from the stated area and the developer reserves the right to make the revisions/alterations, at its absolute discretion, without any liability whatsoever

## UNIT - 808

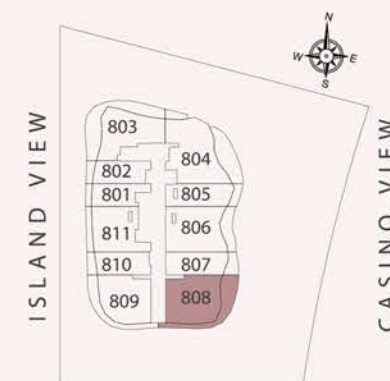
### 1 BEDROOM

LEVEL-08

Internal Living Area	1019.99 sq.ft.
Outdoor Living Area	379.43 sq.ft.
<b>Total Living Area</b>	<b>1399.42 sq.ft.</b>



## KEY PLAN



## KEY ELEVATION



**DISCLAIMER:**  
All measurements are indicative and are for marketing purposes only. All efforts have been made to ensure their accuracy, however these layouts are subject to change at the discretion of the developer and should not be relied upon as final. The actual area may vary from the stated area and the developer reserves the right to make the revisions/alterations, at its absolute discretion, without any liability whatsoever.

## UNIT - 809

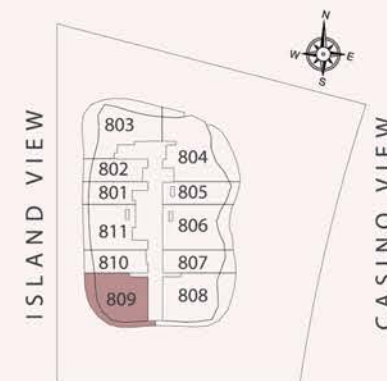
### 1 BEDROOM

LEVEL-08

Internal Living Area	926.23 sq.ft.
Outdoor Living Area	283.41 sq.ft.
<b>Total Living Area</b>	<b>1209.65 sq.ft.</b>



## KEY PLAN



## KEY ELEVATION



**DISCLAIMER:**  
All measurements are indicative and are for marketing purposes only. All efforts have been made to ensure their accuracy, however these layouts are subject to change at the discretion of the developer and should not be relied upon as final. The actual area may vary from the stated area and the developer reserves the right to make the revisions/alterations, at its absolute discretion, without any liability whatsoever.

## UNIT - 810

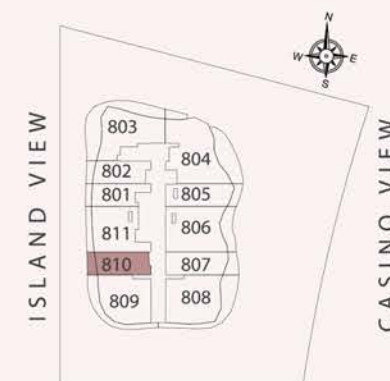
### STUDIO

LEVEL-08

Internal Living Area	492.13 sq.ft.
Outdoor Living Area	79.87 sq.ft.
<b>Total Living Area</b>	<b>571.99 sq.ft.</b>



## KEY PLAN



## KEY ELEVATION



**DISCLAIMER:**  
All measurements are indicative and are for marketing purposes only. All efforts have been made to ensure their accuracy, however these layouts are subject to change at the discretion of the developer and should not be relied upon as final. The actual area may vary from the stated area and the developer reserves the right to make the revisions/alterations, at its absolute discretion, without any liability whatsoever.

## UNIT - 811

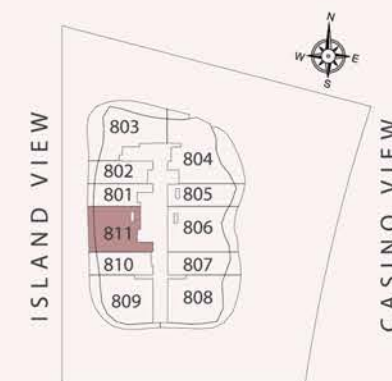
### 1 BEDROOM

LEVEL-08

Internal Living Area	859.18 sq.ft.
Outdoor Living Area	113.34 sq.ft.
<b>Total Living Area</b>	<b>972.52 sq.ft.</b>



## KEY PLAN



## KEY ELEVATION



**DISCLAIMER:**  
All measurements are indicative and are for marketing purposes only. All efforts have been made to ensure their accuracy, however these layouts are subject to change at the discretion of the developer and should not be relied upon as final. The actual area may vary from the stated area and the developer reserves the right to make the revisions/alterations, at its absolute discretion, without any liability whatsoever.