

VISION

CORAL

Jumeirah Garden city



Table of Content

Message From Our CEO	5
Investing in Dubai’s vision 2040	7
The Dubai Experience	9
Location and Landmarks	10
Welcome to Coral	16
Welcoming Reception	18
Your Space Matters	21
Building Management Facilities	24
Smart Home Facilities	25
Air Quality Control	26
Coral Lifestyle	28
Coral Amenities and Facilities	31
Coral Community	34
Coral Renders	36
Building Materials	50
Floorplans	52





MESSAGE FROM OUR CEO

We chose to create spaces that families would truly appreciate living in. Our approach prioritizes generous space reminiscent of our ancestors' dwellings, yet infused with the modern sophistication of today.

Vision is more than just a company; it represents innovation, unwavering commitment, and Emirati excellence. Through our vertically integrated real estate developments platform, our legacy extends beyond mere bricks and mortar. It is crafted from visionary concepts, meticulous planning, and flawless execution.

Man-made cascade in a soaring atrium, dotted with diving figures depicting Dubai's pearl fishermen.



The Dubai Frame is an observatory, museum, and monument in Zabeel Park, Dubai.



Investing in Dubai’s Vision 2040

TAX

The absence of Income Tax, makes Dubai an ideal destination for investors.

INVESTING IN CORAL

Grants you the opportunity to secure a renewable two-year residency permit.

POPULATION GROWTH

Dubai’s Vision 2040 targets a population of 5.4 million.

100% BUSINESS OWNERSHIP

Applicable for all commercial companies

GREENER DUBAI

The expansion of greener and recreational spaces in Dubai is set to double in size.

EASE OF INVESTMENT

Highly regulated market, ensuring a secure and transparent environment for investors.

Investing in Dubai presents a compelling proposition for discerning investors and prospective residents alike. Renowned for its unmatched safety, competitive property prices, and vibrant economy, Dubai stands as a beacon of opportunity in the global landscape. With a reputation for high capital appreciation and a business-friendly environment make it first in the region for ease of doing business, Dubai offers a conducive platform for entrepreneurial endeavors and investment growth.

Moreover, the absence of personal income tax, coupled with the allure of long-term residency through the Golden Visa program, adds to its appeal as a destination of choice. Strategically positioned as a global business hub with seamless worldwide connectivity, Dubai offers a lifestyle enriched by world-class amenities and cultural diversity. Embrace the promise of a prosperous future and elevate your standard of living by investing in the dynamic and vibrant city of Dubai.



Luxury Unleashed, The Dubai Experience

Discover the stunning elegance of Dubai, where sophistication and beauty shine in every corner. Dubai captivates with its luxury, offering pristine beaches and excellent facilities for a top-notch lifestyle. Here, the extraordinary is normal, with wonders like the grand Burj Khalifa. Enjoy vibrant nightlife, rich culture, and unique shopping experiences. In Dubai, luxury is a part of everyday life, promising a world of exquisite living.



Location & Landmarks

Coral, located in the lively area of Dubai, is the perfect example of modern city living. It provides a great mix of easy access and transport links for its residents. Coral enjoys a prestigious position near Sheikh Zayed Road, nestled in a highly sought-after location, it is well-placed for getting to important places in the city quickly and easily. With its well-built infrastructure and careful design, Coral shows Dubai properties' dedication to high standards and commitment to excellence.

Jumeirah Garden City

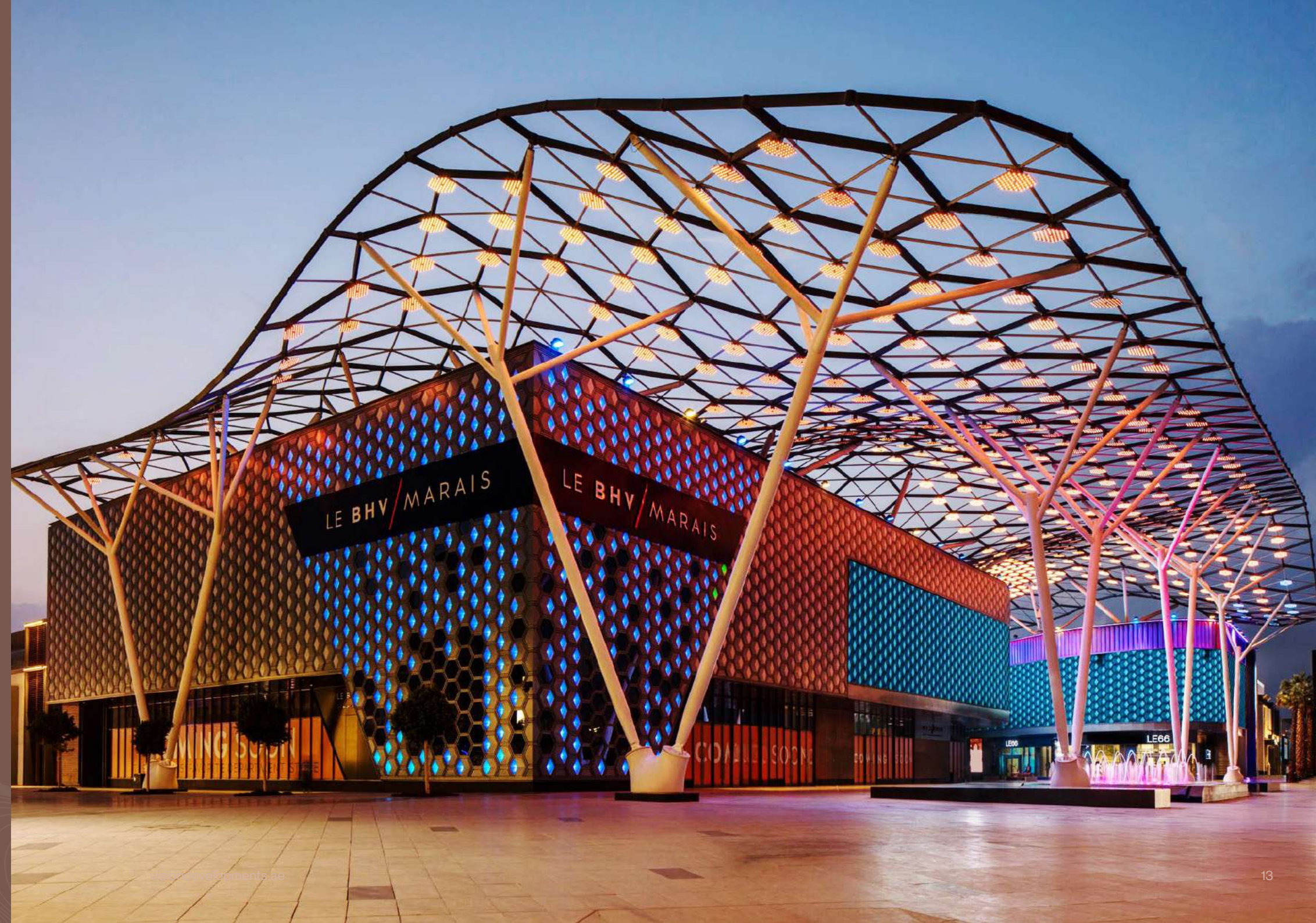
Dubai, United Arab Emirates

- | | | | |
|------------------------------------|-------------------------------|----------------------------|--------------------------------|
| 1. MUSEUM OF THE FUTURE
10 mins | 2. THE DUBAI MALL
10 mins | 3. BURJ KHALIFA
10 mins | 4. MALL OF EMIRATES
16 mins |
| 5. DUBAI INTL. AIRPORT
10 mins | 6. EMIRATES TOWERS
15 mins | | |
| 7. BURJ AL ARAB
20 mins | | | |
| 8. IMG WORLD
20 mins | | | |



Discover Jumeirah Garden

Jumeirah Garden offers luxurious residential living amidst serene surroundings. Residents enjoy proximity to popular destinations like La Mer, City Walk, Dubai Mall, and the iconic Dubai Frame. The community features modern amenities including spacious homes, recreational spaces, and convenient access to shopping and leisure facilities, providing a balanced urban lifestyle in Dubai.





V

CORAL

BY VISION

Welcome to Coral, where every corner invites you to explore the essence of vibrant lifestyle. With modern amenities seamlessly integrated into the community, experience a harmonious blend of comfort and convenience. Embrace the opportunity to live, thrive and indulge in the true essence of Dubai at Coral.



V



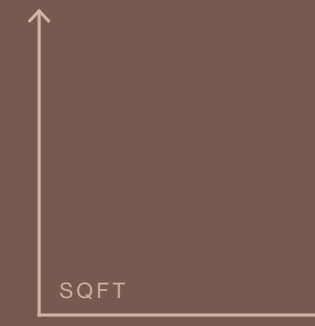
Luxury Corridors Redefined

Luxury corridors set new standards for high-end living and business environments. These spaces combine elegance and practicality with premium finishes, modern technology, and custom furnishings. The strategic layout and design reflect a commitment to quality, making every passage through them a truly luxurious experience.





Your Space Matters. Space is What We Need in Today's Congested Life



Studies indicate that spacious living environment positively impact health by providing more natural light, improving air quality, and offering space for physical activity, which enhances mental and physical well-being.

[SOURCE]
JOURNAL OF ENVIRONMENTAL PSYCHOLOGY

FLOOR-TO-FLOOR WINDOWS

Floor to floor windows, bringing in more natural light

ELEVATED CEILINGS

High ceilings, at 3.5 meters. Our ceiling height is higher than the average

SPACIOUS APARTMENTS

Our apartments are 22% larger than the average apartments

180° OPEN VIEWS

Our apartments offer 180° open views, connecting residents to a breathtaking panorama of natural landmarks, enhancing your home with beauty and tranquility

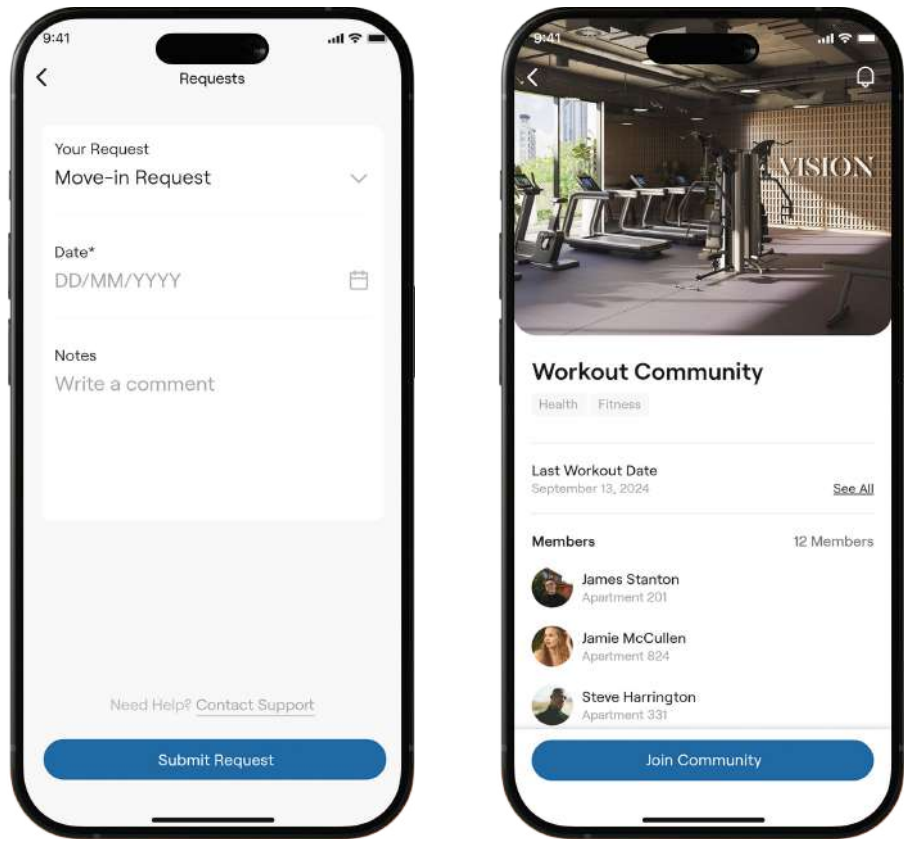


Premium Furnishing at Every Step

From intricately tiled corridors to elegantly finished walls, our commitment to premium quality shines through at every step. Each element of our design has been carefully selected and crafted to ensure a luxurious living experience.

We Are Right Where You Are

At Coral, you will be able to communicate with your community and building management in various ways. You can call our toll-free number, contact us via our 24/7 WhatsApp line, or use the app and portal to process your requests.



SMOOTH MOVE IN AND MOVE OUT

Hassle-free process for your move-ins and move-outs.

ENGAGE WITH THE COMMUNITY

Engage with the community on the community wall

WORK PERMITS AND NOC'S

Apply for work permits and NOCs quickly and easily.

TRACK YOUR REQUESTS

Effortlessly track the status of your requests.

Elevating Every Corner of your Living Space

Our residences are equipped with Smart thermostats and smart door locks for automated comfort and security. You can enhance your living experience by adding other compatible Smart Home devices, allowing for a personalized and integrated smart home setup.



V

CORAL

BY VISION

Air Quality Monitoring System

Installing air quality sensors in buildings can significantly enhance resident health by continuously monitoring and managing indoor air conditions, reducing pollutants and ensuring optimal air quality.

(Source: Building and Environment Journal)



Boost Your
Energy &
Concentration



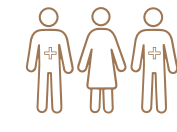
Reduce
Infection Risk
(COVID 19,
Flu etc.)



50% Increase
in Productivity



15% Energy
Saving



Boost Facility
Management
Efficiency



60% Reduction
in Absenteeism

This is Not Just a Building, It's a Lifestyle

CONCIERGE SERVICE

At Coral by Vision, we understand that true luxury encompasses more than just lavish amenities; It's about personalized attention and seamless convenience. That's why our dedicated concierge team is committed to supporting and assisting all residents with their every need, ensuring a lifestyle of unparalleled comfort and ease.

ON DEMAND HOUSE KEEPING SERVICE

Experience the epitome of convenience and care with our on-demand housekeeping service. Tailored for the discerning, our housekeeping ensures your home remains a pristine sanctuary.

ON DEMAND DAY CARE SERVICE

Concurrently, on-demand daycare offers a nurturing environment for your little ones, blending educational activities with fun in a secure setting. Together, they symbolize our dedication to enhancing your lifestyle and peace of mind.



Embrace Community Living at Coral

At Coral, we're not just developing apartments; we're cultivating neighborhoods. We understand the value of a close-knit community for you and your family's well-being. That's why we organize engaging events throughout the year to foster connections and create lasting memories.



Building Features and Amenities

- 1 Swimming Pool
- 2 Fully Furnished
- 3 Fully Smart System
- 4 GYM
- 5 Barbecue
- 6 24x7 Smart Security

Experience a life of comfort at Coral, where every day is a delight filled with relaxation and joy. Begin your mornings with a boost of energy in our state-of-the-art gym, where you can enjoy the latest fitness equipment and personalized workout sessions. Then unwind by the pool, soaking in the sounds of laughter and family fun as you bask in the sun. As evening falls, savor the breathtaking panoramic views from our rooftop terrace, where you can relax and take in the surrounding beauty, whether it's a stunning sunset or the twinkling city lights.

With amenities such as pools and a gym, everything you need for enjoyment and relaxation is at your fingertips. Our dedicated team ensures that everything runs seamlessly, allowing you to live effortlessly and comfortably. From meticulously maintained facilities to personalized services, every detail is taken care of to enhance your experience. Welcome to a lifestyle focused on luxury and ease, where your comfort and satisfaction are our top priorities.



Step into a World of Possibilities

Welcome to our state-of-the-art gym, where every workout is a step towards becoming your best self. Our fitness center is equipped with the latest machines and designed for your ultimate comfort, creating an environment that encourages you to push your limits and achieve your wellness goals. Whether you are a beginner or a seasoned fitness enthusiast, our gym offers a comprehensive experience that nurtures your body, mind, and spirit.



Your Fully Equipped Kitchen

Enhance your cooking experience in your fully equipped kitchen, complete with modern appliances, spacious countertops and elegant finishes tailored to meet your needs.





Superior Craftsmanship in Every Detail

Our dedication to premium quality is evident in every detail of our spaces, from the intricately tiled corridors to the elegantly finished walls. Each element is meticulously crafted to reflect our high standards, ensuring a sophisticated and luxurious environment.



A Space You Can Call Home

Every detail is designed for comfort and warmth. This modern living area exudes a sense of tranquility and openness.





The Pinnacle of Modern Living

Experience the superior craftsmanship of Coral, where every element is constructed with the highest quality materials. The attention to detail in every aspect, from the soundproof walls to the energy-efficient lighting, guarantees a space that is not only stunning but also built to endure.





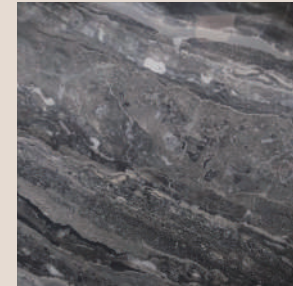




All the Materials are Crafted with Excellence, Built to Last

Crafted with the finest high-end materials, our luxury apartments promise unparalleled durability and elegance. Enjoy a home where quality and beauty seamlessly blend, providing you with a sanctuary of style and strength.

FINISHING MATERIALS



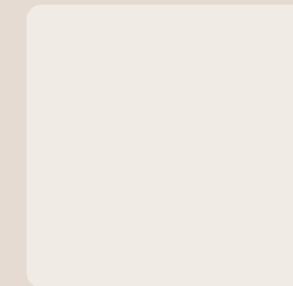
BATHROOM
PORCELAIN



WOODEN
DOOR



PORCELAIN
FLOORING



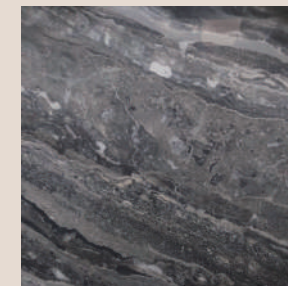
WALL
PAPER



SMART
HOME



ELECTRICAL
APPLIANCES



KITCHEN
COUNTERTOPS



SANITARYWARE
BAGNODESIGN

CORAL

FLOOR PLANS





(2ND TO 6TH)
Typical Floor



7TH & 8TH
FLOOR PLAN



ROOF PLAN

CORAL

BY VISION

Unit 101

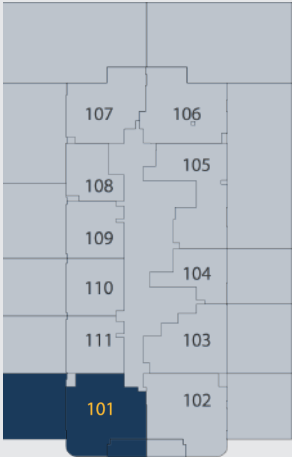
1 Bedroom | Level 1

Level 1 Unit No. 101	1 Bedroom	2 Bathrooms
Indoor Living Area	Outdoor Living Area	Total Living Area
646.05 sq.ft	578.78 sq.ft	1224.83 sq.ft

CORAL
BY VISION

DISCLAIMER
All measurements are indicative and are for marketing purposes only. All efforts have been made to ensure their accuracy, however these layouts are subject to change at the discretion of the developer and should not be relied upon as final. The actual area may vary from the stated area and the developer reserves the right to make the revisions/alterations at its absolute discretion, without any liability whatsoever.

Floor Plan



Key Plan



Key Elevation

Unit 102

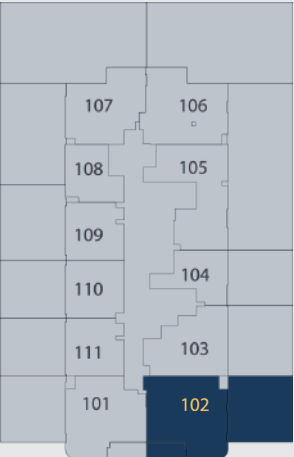
1 Bedroom | Level 1

Level 1 Unit No. 102	1 Bedroom	2 Bathrooms
Indoor Living Area	Outdoor Living Area	Total Living Area
693.09 sq.ft	579.42 sq.ft	1272.51 sq.ft

CORAL
BY VISION

DISCLAIMER
All measurements are indicative and are for marketing purposes only. All efforts have been made to ensure their accuracy, however these layouts are subject to change at the discretion of the developer and should not be relied upon as final. The actual area may vary from the stated area and the developer reserves the right to make the revisions/alterations at its absolute discretion, without any liability whatsoever.

Floor Plan



Key Plan



Key Elevation

Unit 103

1 Bedroom | Level 1

Level 1 Unit No. 103	1 Bedroom	2 Bathrooms
-------------------------	--------------	----------------

Indoor Living Area	Outdoor Living Area	Total Living Area
551.54 sq.ft	530.55 sq.ft	1082.10 sq.ft

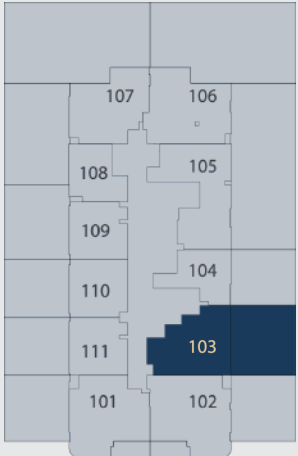
CORAL
BY VISION

DISCLAIMER
All measurements are indicative and are for marketing purposes only. All efforts have been made to ensure their accuracy, however these layouts are subject to change at the discretion of the developer and should not be relied upon as final. The actual area may vary from the stated area and the developer reserves the right to make the revisions/alterations at its absolute discretion, without any liability whatsoever.

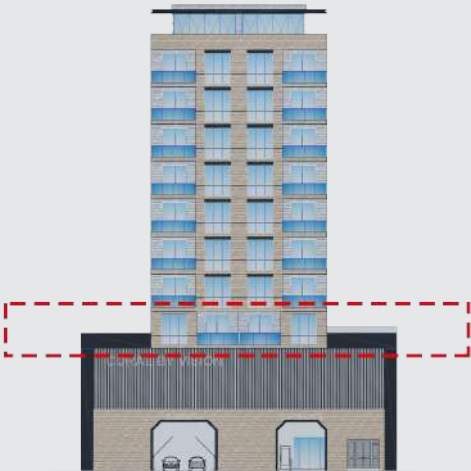
Floor Plan



Key Plan



Key Elevation



Unit 104

Studio | Level 1

Level 1 Unit No. 104	1 Kitchen	1 Bathroom
-------------------------	--------------	---------------

Indoor Living Area	Outdoor Living Area	Total Living Area
339.49 sq.ft	419.47 sq.ft	758.96 sq.ft

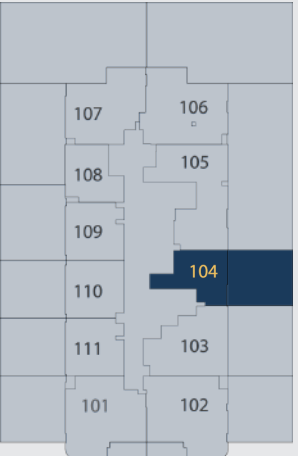
CORAL
BY VISION

DISCLAIMER
All measurements are indicative and are for marketing purposes only. All efforts have been made to ensure their accuracy, however these layouts are subject to change at the discretion of the developer and should not be relied upon as final. The actual area may vary from the stated area and the developer reserves the right to make the revisions/alterations at its absolute discretion, without any liability whatsoever.

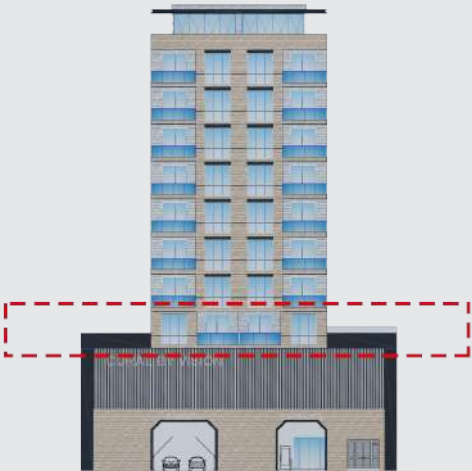
Floor Plan



Key Plan



Key Elevation



Unit 105

1 Bedroom | Level 1

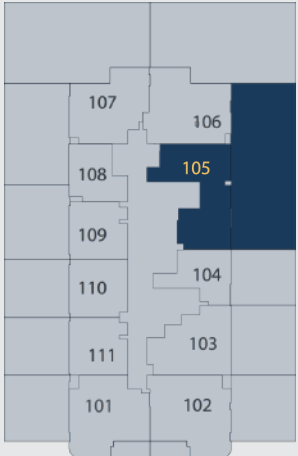
Level 1 Unit No. 105	1 Bedroom	2 Bathrooms
-------------------------	--------------	----------------

Indoor Living Area	Outdoor Living Area	Total Living Area
678.88 sq.ft	1256.79 sq.ft	1935.67 sq.ft

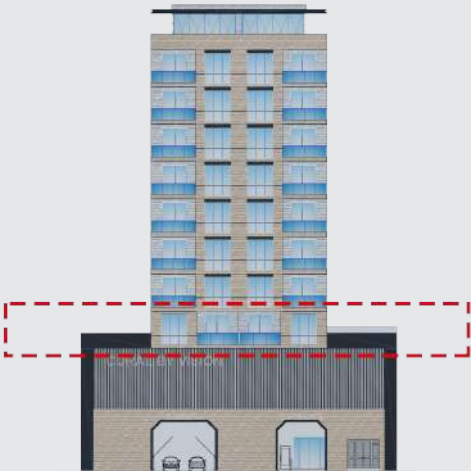
CORAL
BY VISION

DISCLAIMER
All measurements are indicative and are for marketing purposes only. All efforts have been made to ensure their accuracy, however these layouts are subject to change at the discretion of the developer and should not be relied upon as final. The actual area may vary from the stated area and the developer reserves the right to make the revisions/alterations at its absolute discretion, without any liability whatsoever.

Floor Plan



Key Plan



Key Elevation

Unit 106

1 Bedroom | Level 1

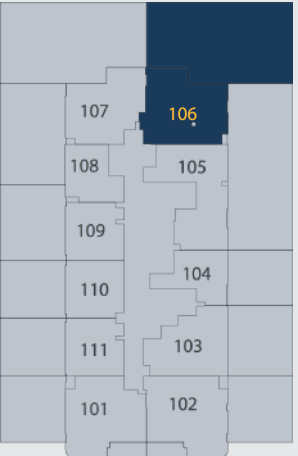
Level 1 Unit No. 106	1 Bedroom	2 Bathrooms
-------------------------	--------------	----------------

Indoor Living Area	Outdoor Living Area	Total Living Area
659.72 sq.ft	1295.01 sq.ft	1954.73 sq.ft

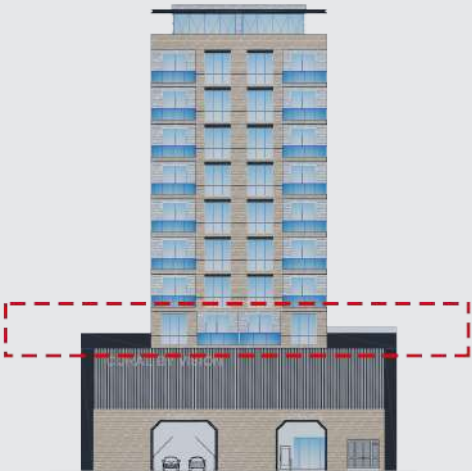
CORAL
BY VISION

DISCLAIMER
All measurements are indicative and are for marketing purposes only. All efforts have been made to ensure their accuracy, however these layouts are subject to change at the discretion of the developer and should not be relied upon as final. The actual area may vary from the stated area and the developer reserves the right to make the revisions/alterations at its absolute discretion, without any liability whatsoever.

Floor Plan



Key Plan



Key Elevation

Unit 107

1 Bedroom | Level 1

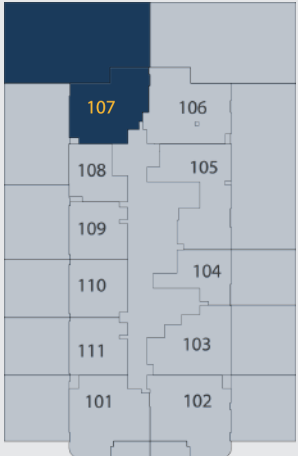
Level 1 Unit No. 107	1 bedroom	2 Bathrooms
-------------------------	--------------	----------------

Indoor Living Area	Outdoor Living Area	Total Living Area
574.36 sq.ft	1295.97 sq.ft	1870.34 sq.ft

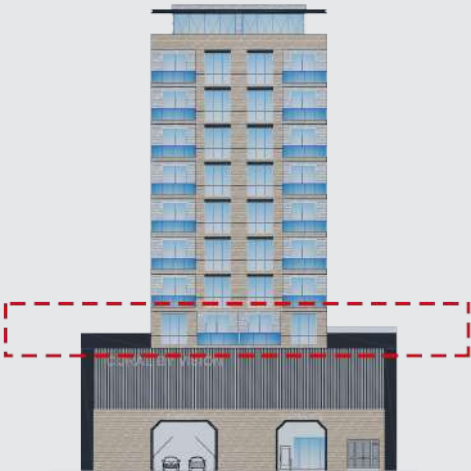
CORAL
BY VISION

DISCLAIMER
All measurements are indicative and are for marketing purposes only. All efforts have been made to ensure their accuracy, however these layouts are subject to change at the discretion of the developer and should not be relied upon as final. The actual area may vary from the stated area and the developer reserves the right to make the revisions/alterations at its absolute discretion, without any liability whatsoever.

Floor Plan



Key Plan



Key Elevation

Unit 108

Studio | Level 1

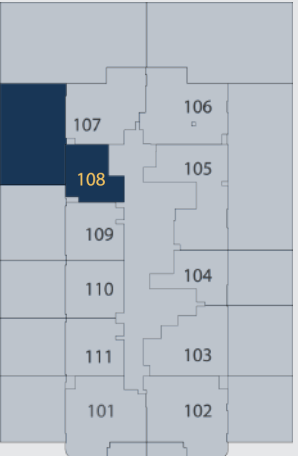
Level 1 Unit No. 108	1 Kitchen	1 Bathroom
-------------------------	--------------	---------------

Indoor Living Area	Outdoor Living Area	Total Living Area
327.87 sq.ft	763.27 sq.ft	1091.14 sq.ft

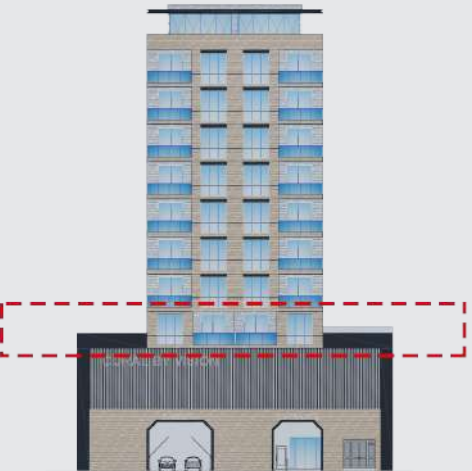
CORAL
BY VISION

DISCLAIMER
All measurements are indicative and are for marketing purposes only. All efforts have been made to ensure their accuracy, however these layouts are subject to change at the discretion of the developer and should not be relied upon as final. The actual area may vary from the stated area and the developer reserves the right to make the revisions/alterations at its absolute discretion, without any liability whatsoever.

Floor Plan



Key Plan



Key Elevation

Unit 109

Studio | Level 1

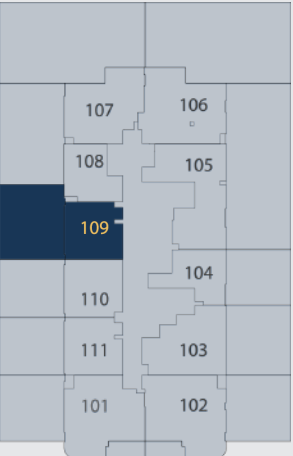
Level 1 Unit No. 109	1 Kitchen	1 Bathroom
-------------------------	--------------	---------------

Indoor Living Area	Outdoor Living Area	Total Living Area
381.04 sq.ft	568.12 sq.ft	949.16 sq.ft

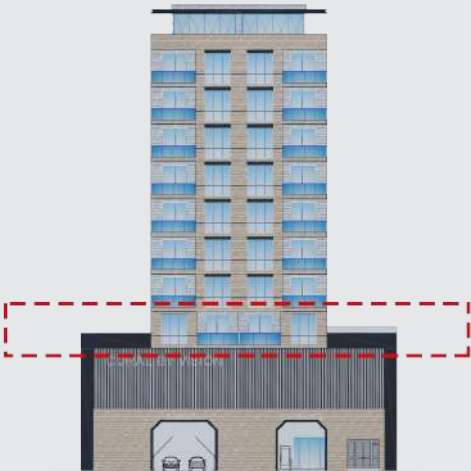
CORAL
BY VISION

DISCLAIMER
All measurements are indicative and are for marketing purposes only. All efforts have been made to ensure their accuracy, however these layouts are subject to change at the discretion of the developer and should not be relied upon as final. The actual area may vary from the stated area and the developer reserves the right to make the revisions/alterations at its absolute discretion, without any liability whatsoever.

Floor Plan



Key Plan



Key Elevation

Unit 110

Studio | Level 1

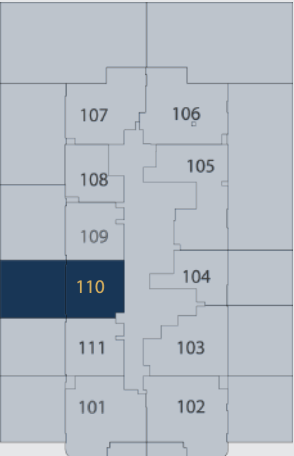
Level 1 Unit No. 110	1 Kitchen	1 Bathroom
-------------------------	--------------	---------------

Indoor Living Area	Outdoor Living Area	Total Living Area
384.81 sq.ft	436.91 sq.ft	821.72 sq.ft

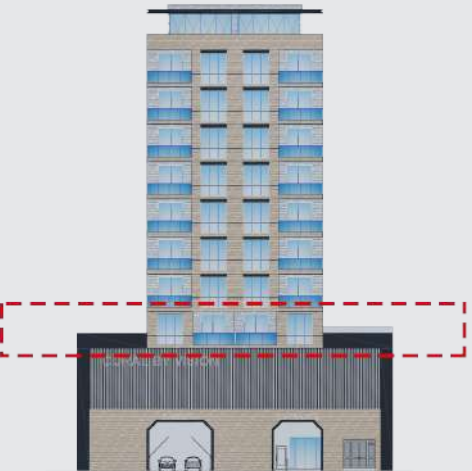
CORAL
BY VISION

DISCLAIMER
All measurements are indicative and are for marketing purposes only. All efforts have been made to ensure their accuracy, however these layouts are subject to change at the discretion of the developer and should not be relied upon as final. The actual area may vary from the stated area and the developer reserves the right to make the revisions/alterations at its absolute discretion, without any liability whatsoever.

Floor Plan



Key Plan



Key Elevation

Unit 111

Studio | Level 1

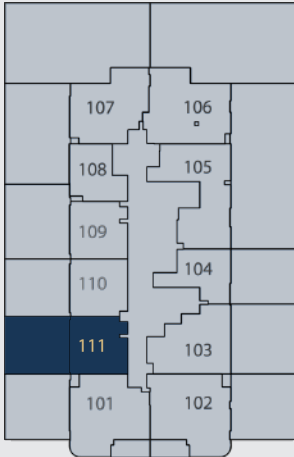
Level 1	1	1
Unit No. 111	Kitchen	Bathroom

Indoor Living Area	Outdoor Living Area	Total Living Area
381.47 sq.ft	436.48 sq.ft	817.95 sq.ft

CORAL
BY VISION

DISCLAIMER
All measurements are indicative and are for marketing purposes only. All efforts have been made to ensure their accuracy, however these layouts are subject to change at the discretion of the developer and should not be relied upon as final. The actual area may vary from the stated area and the developer reserves the right to make the revisions/alterations at its absolute discretion, without any liability whatsoever.

Floor Plan



Key Plan



Key Elevation



Unit 201

1 Bedroom | Level 2

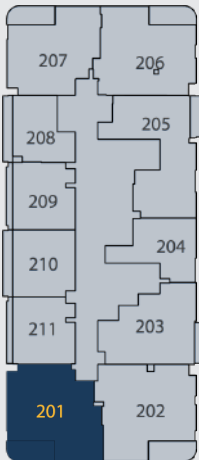
Level 2 Unit No. 201	1 Bedroom	2 Bathrooms
-------------------------	--------------	----------------

Indoor Living Area	Outdoor Living Area	Total Living Area
640.02 sq.ft	81.05 sq.ft	721.07 sq.ft

CORAL
BY VISION

DISCLAIMER
All measurements are indicative and are for marketing purposes only. All efforts have been made to ensure their accuracy, however these layouts are subject to change at the discretion of the developer and should not be relied upon as final. The actual area may vary from the stated area and the developer reserves the right to make the revisions/alterations at its absolute discretion, without any liability whatsoever.

Floor Plan



Key Plan



Key Elevation

Unit 202

1 Bedroom | Level 2

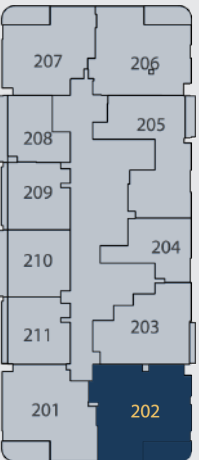
Level 2 Unit No. 202	1 Bedroom	2 Bathrooms
-------------------------	--------------	----------------

Indoor Living Area	Outdoor Living Area	Total Living Area
701.38 sq.ft	81.05 sq.ft	782.43 sq.ft

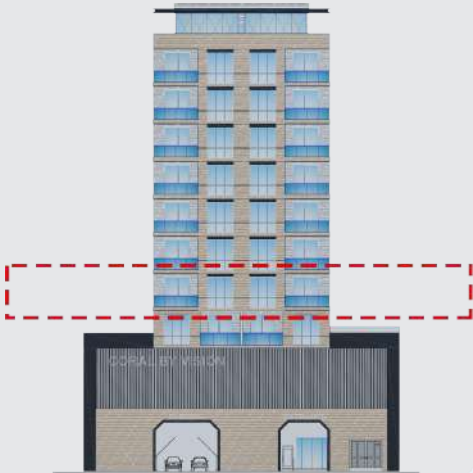
CORAL
BY VISION

DISCLAIMER
All measurements are indicative and are for marketing purposes only. All efforts have been made to ensure their accuracy, however these layouts are subject to change at the discretion of the developer and should not be relied upon as final. The actual area may vary from the stated area and the developer reserves the right to make the revisions/alterations at its absolute discretion, without any liability whatsoever.

Floor Plan



Key Plan



Key Elevation

Unit 203

1 Bedroom | Level 2

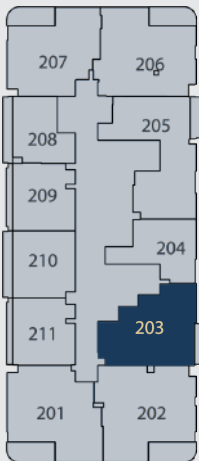
Level 2 Unit No. 203	1 Bedroom	2 Bathrooms
-------------------------	--------------	----------------

Indoor Living Area	Outdoor Living Area	Total Living Area
545.41 sq.ft	20.67 sq.ft	566.07 sq.ft

CORAL
BY VISION

DISCLAIMER
All measurements are indicative and are for marketing purposes only. All efforts have been made to ensure their accuracy, however these layouts are subject to change at the discretion of the developer and should not be relied upon as final. The actual area may vary from the stated area and the developer reserves the right to make the revisions/alterations at its absolute discretion, without any liability whatsoever.

Floor Plan



Key Plan



Key Elevation

Unit 204

Studio | Level 2

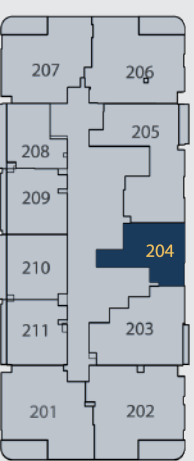
Level 2 Unit No. 204	1 Kitchen	1 Bathroom
-------------------------	--------------	---------------

Indoor Living Area	Outdoor Living Area	Total Living Area
339.49 sq.ft	0.00 sq.ft	339.49 sq.ft

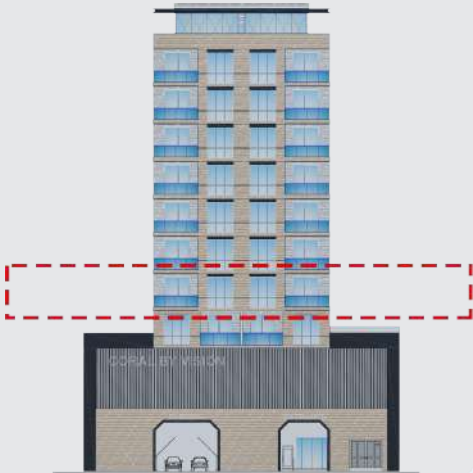
CORAL
BY VISION

DISCLAIMER
All measurements are indicative and are for marketing purposes only. All efforts have been made to ensure their accuracy, however these layouts are subject to change at the discretion of the developer and should not be relied upon as final. The actual area may vary from the stated area and the developer reserves the right to make the revisions/alterations at its absolute discretion, without any liability whatsoever.

Floor Plan



Key Plan



Key Elevation

Unit 205

1 Bedroom | Level 2

Level 2 Unit No. 205	1 Bedroom	2 Bathrooms
-------------------------	--------------	----------------

Indoor Living Area	Outdoor Living Area	Total Living Area
655.95 sq.ft	36.92 sq.ft	692.87 sq.ft

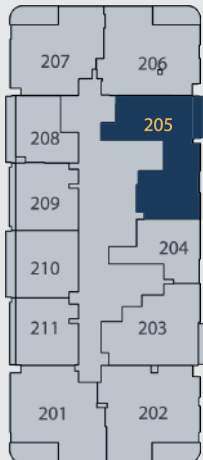
CORAL
BY VISION

DISCLAIMER
All measurements are indicative and are for marketing purposes only. All efforts have been made to ensure their accuracy, however these layouts are subject to change at the discretion of the developer and should not be relied upon as final. The actual area may vary from the stated area and the developer reserves the right to make the revisions/alterations at its absolute discretion, without any liability whatsoever.

Floor Plan



Key Plan



Key Elevation



Unit 206

1 Bedroom | Level 2

Level 2 Unit No. 206	1 Bedroom	2 Bathrooms
-------------------------	--------------	----------------

Indoor Living Area	Outdoor Living Area	Total Living Area
658.43 sq.ft	73.19 sq.ft	731.62 sq.ft

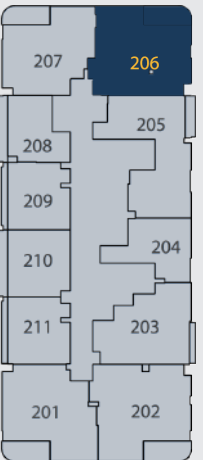
CORAL
BY VISION

DISCLAIMER
All measurements are indicative and are for marketing purposes only. All efforts have been made to ensure their accuracy, however these layouts are subject to change at the discretion of the developer and should not be relied upon as final. The actual area may vary from the stated area and the developer reserves the right to make the revisions/alterations at its absolute discretion, without any liability whatsoever.

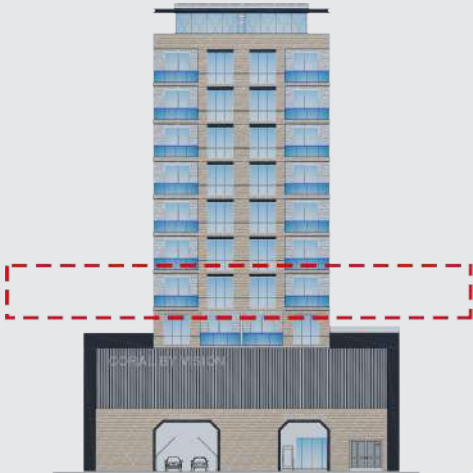
Floor Plan



Key Plan



Key Elevation



Unit 207

1 Bedroom | Level 2

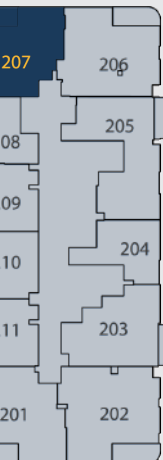
Level 2 Unit No. 207	1 Bedroom	2 Bathrooms
-------------------------	--------------	----------------

Indoor Living Area	Outdoor Living Area	Total Living Area
574.36 sq.ft	74.06 sq.ft	648.42 sq.ft

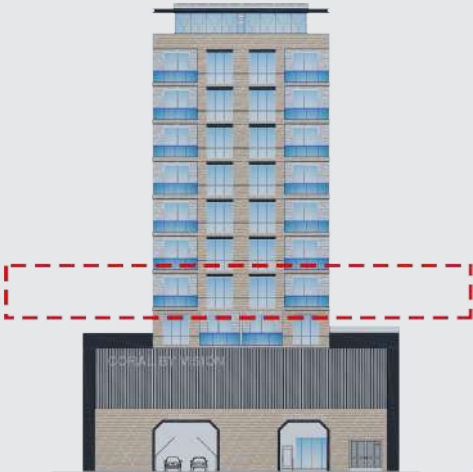
CORAL
BY VISION

DISCLAIMER
All measurements are indicative and are for marketing purposes only. All efforts have been made to ensure their accuracy, however these layouts are subject to change at the discretion of the developer and should not be relied upon as final. The actual area may vary from the stated area and the developer reserves the right to make the revisions/alterations at its absolute discretion, without any liability whatsoever.

Floor Plan



Key Plan



Key Elevation

Unit 208

Studio | Level 2

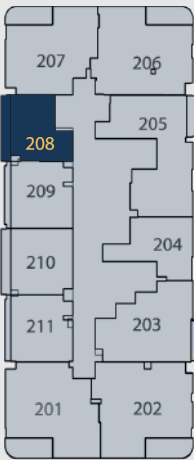
Level 2 Unit No. 208	1 Kitchen	1 Bathroom
-------------------------	--------------	---------------

Indoor Living Area	Outdoor Living Area	Total Living Area
296.12 sq.ft	55.76 sq.ft	351.87 sq.ft

CORAL
BY VISION

DISCLAIMER
All measurements are indicative and are for marketing purposes only. All efforts have been made to ensure their accuracy, however these layouts are subject to change at the discretion of the developer and should not be relied upon as final. The actual area may vary from the stated area and the developer reserves the right to make the revisions/alterations at its absolute discretion, without any liability whatsoever.

Floor Plan



Key Plan



Key Elevation

Unit 209

Studio | Level 2

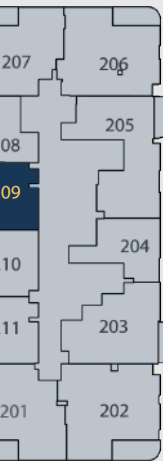
Level 2 Unit No. 209	1 Kitchen	1 Bathroom
-------------------------	--------------	---------------

Indoor Living Area	Outdoor Living Area	Total Living Area
350.69 sq.ft	35.74 sq.ft	386.42 sq.ft

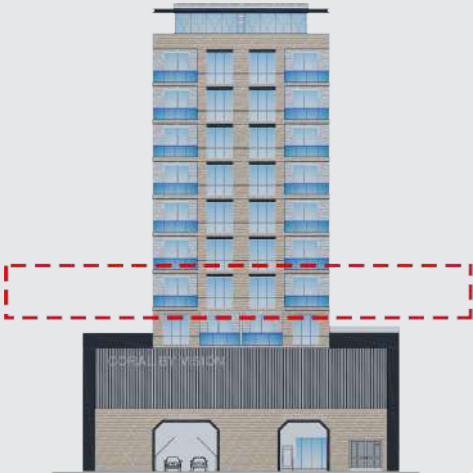
CORAL
BY VISION

DISCLAIMER
All measurements are indicative and are for marketing purposes only. All efforts have been made to ensure their accuracy, however these layouts are subject to change at the discretion of the developer and should not be relied upon as final. The actual area may vary from the stated area and the developer reserves the right to make the revisions/alterations at its absolute discretion, without any liability whatsoever.

Floor Plan



Key Plan



Key Elevation

Unit 210

Studio | Level 2

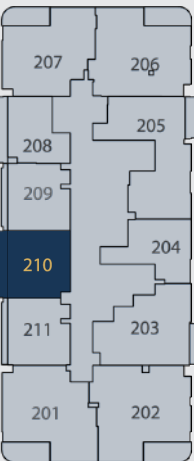
Level 2 Unit No. 210	1 Kitchen	1 Bathroom
-------------------------	--------------	---------------

Indoor Living Area	Outdoor Living Area	Total Living Area
353.38 sq.ft	55.76 sq.ft	409.14 sq.ft

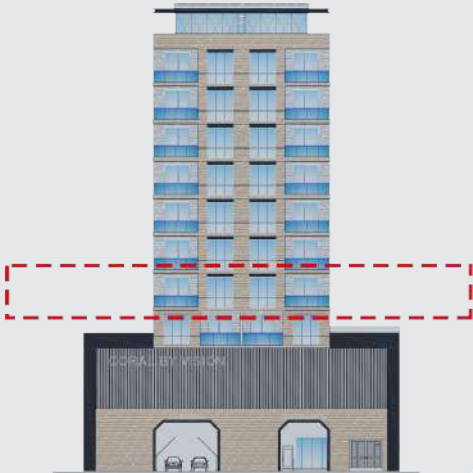
CORAL
BY VISION

DISCLAIMER
All measurements are indicative and are for marketing purposes only. All efforts have been made to ensure their accuracy, however these layouts are subject to change at the discretion of the developer and should not be relied upon as final. The actual area may vary from the stated area and the developer reserves the right to make the revisions/alterations at its absolute discretion, without any liability whatsoever.

Floor Plan



Key Plan



Key Elevation

Unit 211

Studio | Level 2

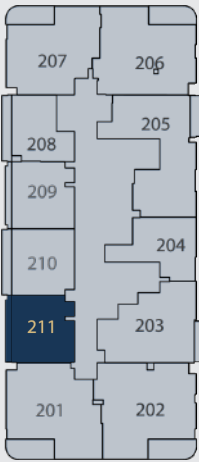
Level 2 Unit No. 211	1 Kitchen	1 Bathroom
-------------------------	--------------	---------------

Indoor Living Area	Outdoor Living Area	Total Living Area
349.29 sq.ft	33.05 sq.ft	382.33 sq.ft

CORAL
BY VISION

DISCLAIMER
All measurements are indicative and are for marketing purposes only. All efforts have been made to ensure their accuracy, however these layouts are subject to change at the discretion of the developer and should not be relied upon as final. The actual area may vary from the stated area and the developer reserves the right to make the revisions/alterations at its absolute discretion, without any liability whatsoever.

Floor Plan



Key Plan



Key Elevation



Unit 701

1 Bedroom | Level 7

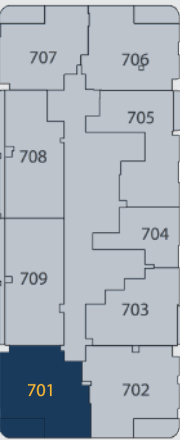
Level 7 Unit No. 701	1 Bedroom	2 Bathrooms
-------------------------	--------------	----------------

Indoor Living Area	Outdoor Living Area	Total Living Area
640.02 sq.ft	81.05 sq.ft	721.07 sq.ft

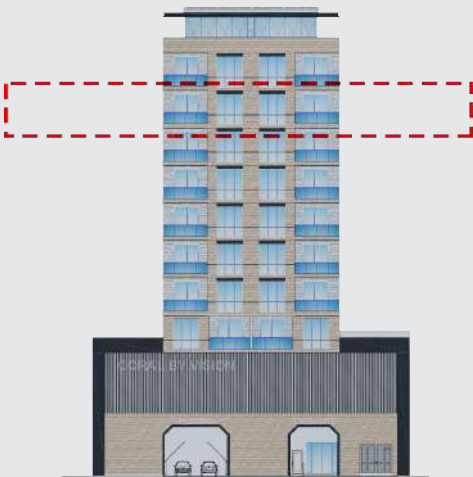
CORAL
BY VISION

DISCLAIMER
All measurements are indicative and are for marketing purposes only. All efforts have been made to ensure their accuracy, however these layouts are subject to change at the discretion of the developer and should not be relied upon as final. The actual area may vary from the stated area and the developer reserves the right to make the revisions/alterations at its absolute discretion, without any liability whatsoever.

Floor Plan



Key Plan



Key Elevation

Unit 702

1 Bedroom | Level 7

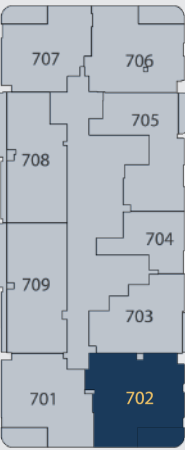
Level 7 Unit No. 702	1 Bedroom	2 Bathrooms
-------------------------	--------------	----------------

Indoor Living Area	Outdoor Living Area	Total Living Area
701.38 sq.ft	81.05 sq.ft	782.43 sq.ft

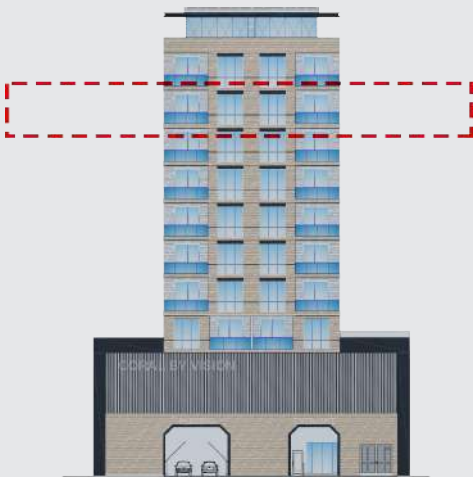
CORAL
BY VISION

DISCLAIMER
All measurements are indicative and are for marketing purposes only. All efforts have been made to ensure their accuracy, however these layouts are subject to change at the discretion of the developer and should not be relied upon as final. The actual area may vary from the stated area and the developer reserves the right to make the revisions/alterations at its absolute discretion, without any liability whatsoever.

Floor Plan



Key Plan



Key Elevation

Unit 703

1 Bedroom | Level 7

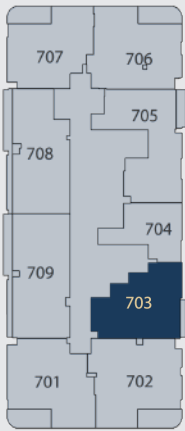
Level 7 Unit No. 703	1 Bedroom	2 Bathrooms
-------------------------	--------------	----------------

Indoor Living Area	Outdoor Living Area	Total Living Area
548.74 sq.ft	20.67 sq.ft	569.41 sq.ft

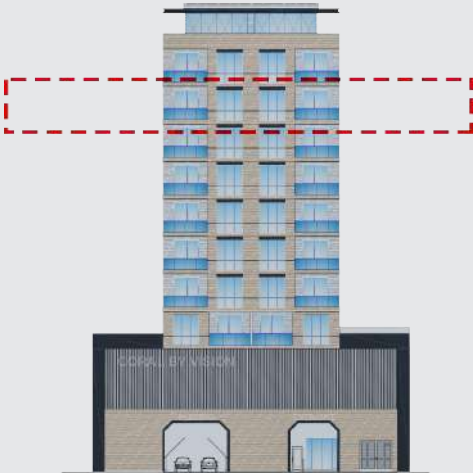
CORAL
BY VISION

DISCLAIMER
All measurements are indicative and are for marketing purposes only. All efforts have been made to ensure their accuracy, however these layouts are subject to change at the discretion of the developer and should not be relied upon as final. The actual area may vary from the stated area and the developer reserves the right to make the revisions/alterations at its absolute discretion, without any liability whatsoever.

Floor Plan



Key Plan



Key Elevation

Unit 704

Studio | Level 7

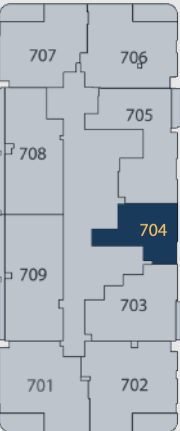
Level 7 Unit No. 704	1 Kitchen	1 Bathroom
-------------------------	--------------	---------------

Indoor Living Area	Outdoor Living Area	Total Living Area
339.49 sq.ft	0.00 sq.ft	339.49 sq.ft

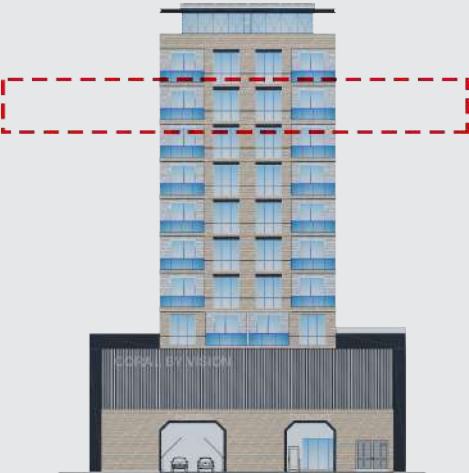
CORAL
BY VISION

DISCLAIMER
All measurements are indicative and are for marketing purposes only. All efforts have been made to ensure their accuracy, however these layouts are subject to change at the discretion of the developer and should not be relied upon as final. The actual area may vary from the stated area and the developer reserves the right to make the revisions/alterations at its absolute discretion, without any liability whatsoever.

Floor Plan



Key Plan



Key Elevation

Unit 705

1 Bedroom | Level 7

Level 7 Unit No. 705	1 Bedroom	2 Bathrooms
-------------------------	--------------	----------------

Indoor Living Area	Outdoor Living Area	Total Living Area
655.95 sq.ft	36.92 sq.ft	692.87 sq.ft

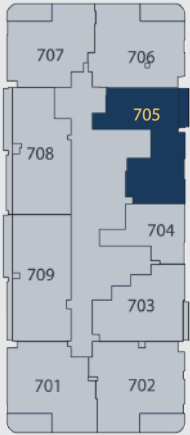
CORAL
BY VISION

DISCLAIMER
All measurements are indicative and are for marketing purposes only. All efforts have been made to ensure their accuracy, however these layouts are subject to change at the discretion of the developer and should not be relied upon as final. The actual area may vary from the stated area and the developer reserves the right to make the revisions/alterations at its absolute discretion, without any liability whatsoever.

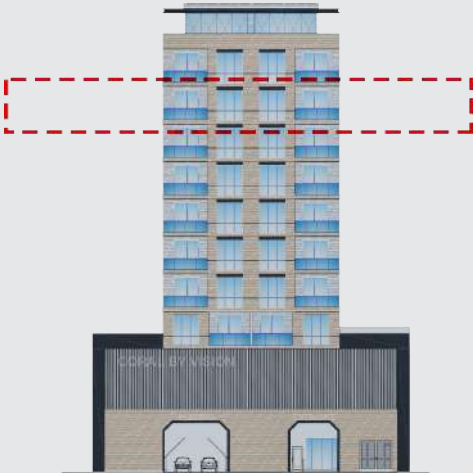
Floor Plan



Key Plan



Key Elevation



Unit 706

1 Bedroom | Level 7

Level 7 Unit No. 706	1 Bedroom	2 Bathrooms
-------------------------	--------------	----------------

Indoor Living Area	Outdoor Living Area	Total Living Area
658.64 sq.ft	73.19 sq.ft	731.84 sq.ft

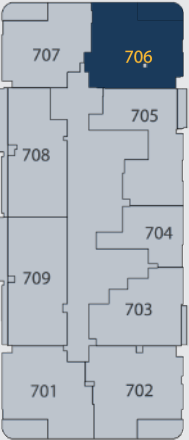
CORAL
BY VISION

DISCLAIMER
All measurements are indicative and are for marketing purposes only. All efforts have been made to ensure their accuracy, however these layouts are subject to change at the discretion of the developer and should not be relied upon as final. The actual area may vary from the stated area and the developer reserves the right to make the revisions/alterations at its absolute discretion, without any liability whatsoever.

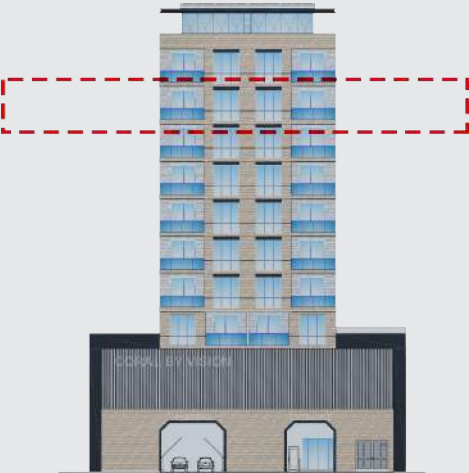
Floor Plan



Key Plan



Key Elevation



Unit 707

1 Bedroom | Level 7

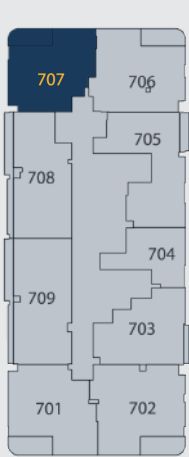
Level 7 Unit No. 707	1 Bedroom	2 Bathrooms
-------------------------	--------------	----------------

Indoor Living Area	Outdoor Living Area	Total Living Area
574.36 sq.ft	74.06 sq.ft	648.42 sq.ft

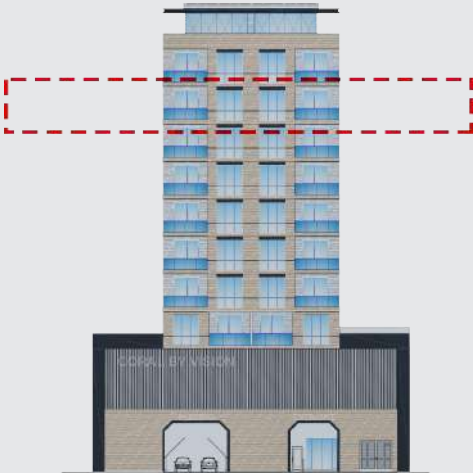
CORAL
BY VISION

DISCLAIMER
All measurements are indicative and are for marketing purposes only. All efforts have been made to ensure their accuracy, however these layouts are subject to change at the discretion of the developer and should not be relied upon as final. The actual area may vary from the stated area and the developer reserves the right to make the revisions/alterations at its absolute discretion, without any liability whatsoever.

Floor Plan



Key Plan



Key Elevation

Unit 708

1 Bedroom | Level 7

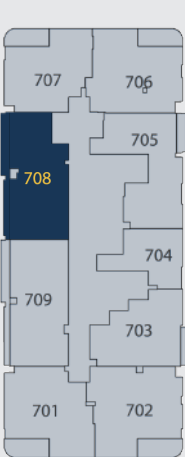
Level 7 Unit No. 708	1 Bedroom	2 Bathroom
-------------------------	--------------	---------------

Indoor Living Area	Outdoor Living Area	Total Living Area
656.71 sq.ft	91.49 sq.ft	748.20 sq.ft

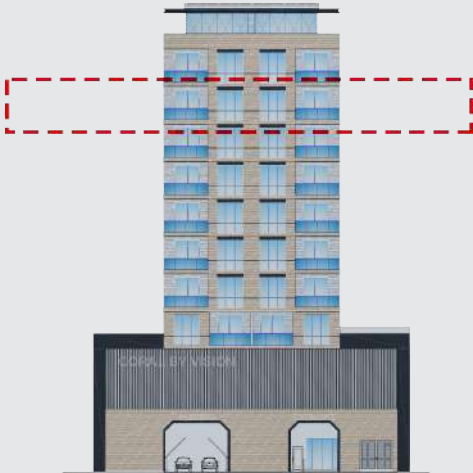
CORAL
BY VISION

DISCLAIMER
All measurements are indicative and are for marketing purposes only. All efforts have been made to ensure their accuracy, however these layouts are subject to change at the discretion of the developer and should not be relied upon as final. The actual area may vary from the stated area and the developer reserves the right to make the revisions/alterations at its absolute discretion, without any liability whatsoever.

Floor Plan



Key Plan



Key Elevation

Unit 709

1 Bedroom | Level 7

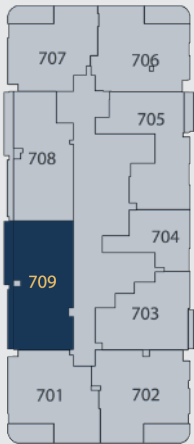
Level 7 Unit No. 709	1 Bedroom	2 Bathroom
-------------------------	--------------	---------------

Indoor Living Area	Outdoor Living Area	Total Living Area
708.37 sq.ft	88.80 sq.ft	797.18 sq.ft

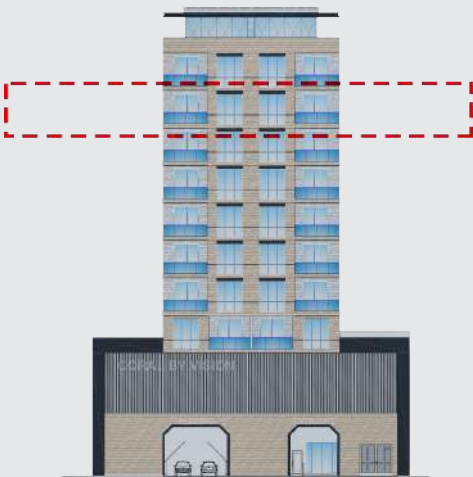
CORAL
BY VISION

DISCLAIMER
All measurements are indicative and are for marketing purposes only. All efforts have been made to ensure their accuracy, however these layouts are subject to change at the discretion of the developer and should not be relied upon as final. The actual area may vary from the stated area and the developer reserves the right to make the revisions/alterations at its absolute discretion, without any liability whatsoever.

Floor Plan



Key Plan



Key Elevation



Unit R01

Studio | Roof

Roof Level	1	1
Unit No. R01	Kitchen	Bathroom

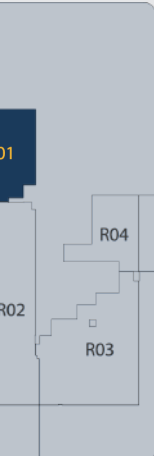
Indoor Living Area	Outdoor Living Area	Total Living Area
352.41 sq.ft	176.42 sq.ft	528.83 sq.ft

CORAL

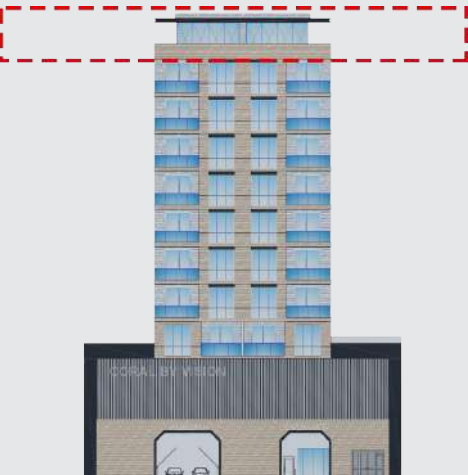
BY VISION

DISCLAIMER
All measurements are indicative and are for marketing purposes only. All efforts have been made to ensure their accuracy, however these layouts are subject to change at the discretion of the developer and should not be relied upon as final. The actual area may vary from the stated area and the developer reserves the right to make the revisions/alterations at its absolute discretion, without any liability whatsoever.

Floor Plan



Key Plan



Key Elevation

Unit R02

2 Bedroom | Roof

Roof Level	2	3
Unit No. R02	Bedroom	Bathrooms

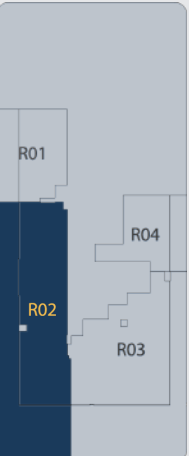
Indoor Living Area	Outdoor Living Area	Total Living Area
828.93 sq.ft	733.67 sq.ft	1562.60 sq.ft

CORAL

BY VISION

DISCLAIMER
All measurements are indicative and are for marketing purposes only. All efforts have been made to ensure their accuracy, however these layouts are subject to change at the discretion of the developer and should not be relied upon as final. The actual area may vary from the stated area and the developer reserves the right to make the revisions/alterations at its absolute discretion, without any liability whatsoever.

Floor Plan



Key Plan



Key Elevation

Unit R03

2 Bedroom | Roof

Roof Level	2	3
Unit No. R03	Bedroom	Bathrooms

Indoor Living Area	Outdoor Living Area	Total Living Area
845.61 sq.ft	738.94 sq.ft	1584.56 sq.ft

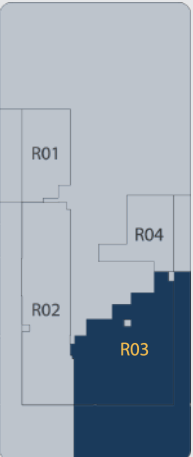
CORAL
BY VISION

DISCLAIMER
All measurements are indicative and are for marketing purposes only. All efforts have been made to ensure their accuracy, however these layouts are subject to change at the discretion of the developer and should not be relied upon as final. The actual area may vary from the stated area and the developer reserves the right to make the revisions/alterations at its absolute discretion, without any liability whatsoever.

Floor Plan



Key Plan



Key Elevation



Unit R04

Studio | Roof

Roof Level	1	1
Unit No. R04	Kitchen	Bathroom

Indoor Living Area	Outdoor Living Area	Total Living Area
318.40 sq.ft	109.04 sq.ft	427.43 sq.ft

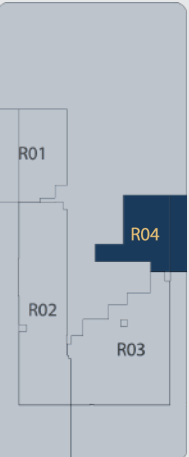
CORAL
BY VISION

DISCLAIMER
All measurements are indicative and are for marketing purposes only. All efforts have been made to ensure their accuracy, however these layouts are subject to change at the discretion of the developer and should not be relied upon as final. The actual area may vary from the stated area and the developer reserves the right to make the revisions/alterations at its absolute discretion, without any liability whatsoever.

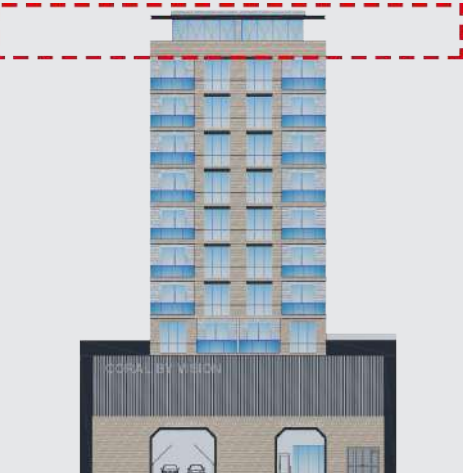
Floor Plan



Key Plan



Key Elevation



Thank you

VISION

CORAL

Jumeirah Garden City

