

W H E R E   E V E R Y   D A Y   I S   A

**B            R            E            E            Z            E**



**R** the  
Residence




EXPERIENCE BEACHFRONT  
LIVING WITHIN THE CITY





A family consisting of a man, a woman, and a child are walking along a sandy beach. The man is wearing a white shirt and shorts, the woman is in a pink dress and a hat, and the child is in a white shirt and blue shorts. They are walking towards the left side of the frame. The ocean is in the background with gentle waves, and the sky is a clear, vibrant blue.

# WELCOME TO THE RESIDENCE

A close-up view of footprints in the sand, leading from the foreground towards the ocean. The sand is a light brown color, and the footprints are dark and distinct. The ocean waves are visible in the background, creating a sense of depth and movement.

As the only residential tower in Sharjah with exclusive beach access, The Residence is an exquisite haven with a waterfront view.

Located on Al Khalidiya beach, The Residence features spacious apartments with floor-to-ceiling windows that open onto the vast, glistening ocean view.



# EXPERIENCE A LIFESTYLE

of unparalleled luxury at The Residence in Sharjah



Nestled along the pristine shores, this exclusive residential tower offers a unique blend of serenity and sophistication.

Immerse yourself in a world where every detail is crafted to perfection, from the breathtaking ocean views to the meticulously designed interiors.

Whether you're relaxing by the pool, enjoying a workout in the state-of-the-art gym, or strolling along the beach, every moment spent at The Residence is a testament to refined living. Discover a new standard of elegance at The Residence, where every day is a celebration of luxury.





ELEVATE  
YOUR LIFESTYLE  
WITH AN OCEAN VIEW IN SIGHT





## STRATEGIC ADDRESS ALONG THE COASTLINE

Al Khalidiya, nestled along the coastline of Sharjah between Al Layyeh Suburb and Al Khan, offers a delightful mix of residential options along with upscale hotels and beach resorts.

The suburb boasts a well-connected road network and close proximity to key landmarks in the emirate, making it an ideal neighborhood for those seeking a lively yet peaceful residential experience.







5 MINUTES TO  
SHARJAH AQUARIUM



20 MINUTES TO  
DXB INTERNATIONAL AIRPORT



5 MINUTES TO  
KHALIDIYA PARK



23 MINUTES TO  
UNIVERSITY CITY SHARJAH



20 MINUTES TO  
CITY CENTER AL ZAHIA



25 MINUTES TO  
SHARJAH INTERNATIONAL AIRPORT

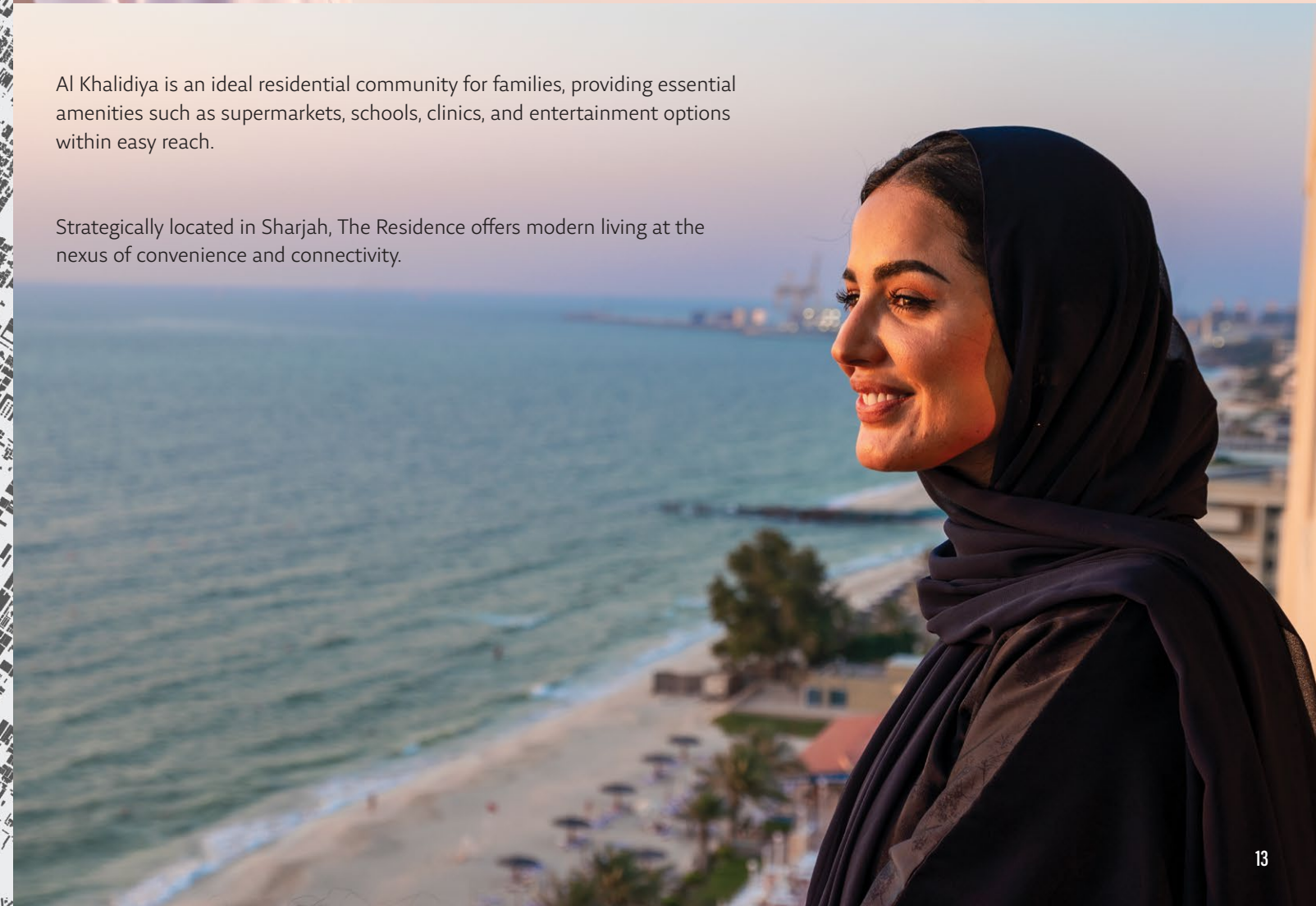
**R**the  
Residence



## BENEFIT FROM A PRIME ADDRESS IN SHARJAH

Al Khalidiya is an ideal residential community for families, providing essential amenities such as supermarkets, schools, clinics, and entertainment options within easy reach.

Strategically located in Sharjah, The Residence offers modern living at the nexus of convenience and connectivity.





# ARCHITECTURAL ELEGANCE IN SHARJAH

Explore a modern architectural marvel at The Residence. This stunning residential tower stands tall along the coastline, offering breathtaking views of the Arabian Gulf.

With its sleek design and contemporary aesthetic, The Residence is a symbol of luxury and sophistication. Step into the grand lobby and be greeted by an ambiance of elegance and style.

The lobby's exquisite design sets the tone for the rest of the building, offering residents a glimpse of the luxurious living experience that awaits them.











Living Room

























Living Room



kitchen



# LUXURY LIVING UNPARALLELED AMENITIES



The complete and extensive upgrade of all facilities and finishes at The Residence has paved the way for a list of unparalleled and contemporary amenities that will redefine your lifestyle.

Imagine coming home to a sanctuary where every detail is designed to elevate your everyday experience.

From the moment you step into the grand lobby, you're greeted by a sense of sophistication and style. Step outside to lush landscapes and vibrant community spaces, perfect for socializing or finding a moment of peace. With a range of modern amenities at your doorstep, every day at The Residence promises to be an extraordinary experience.



# AMENITIES



**OUTDOOR SWIMMING POOL WITH SUN DECK**



**DIRECT & EXCLUSIVE BEACH ACCESS**



**BEACH VOLLEYBALL**



**LUSH GREEN AREA**



**KIDS PLAY AREA**



**INDOOR GYM**

















Direct & Exclusive Beach Access







EXTENSIVE UPGRADE ON  
ALL FACILITIES & FINISHES

**BUILDING CATEGORY:**  
READY RESIDENTIAL BUILDING

**STRUCTURE:**  
B + G + 18 FLOORS

**TOTAL UNITS:**  
168 APARTMENTS

**PRICES:**  
FROM AED 410,116

UNIT TYPE	UNIT MIX	UNIT SIZE
STUDIOS	31 UNITS	527 SQFT TO 725 SQFT
1 BEDROOM APARTMENTS	5 UNITS	690 SQFT TO 952 SQFT
2 BEDROOM APARTMENTS	64 UNITS	2,388 SQFT
3 BEDROOM APARTMENTS	64 UNITS	2,816 SQFT TO 2,820 SQFT
4 BEDROOM PENTHOUSES	4 UNITS	5,256 SQFT





# R the Residence

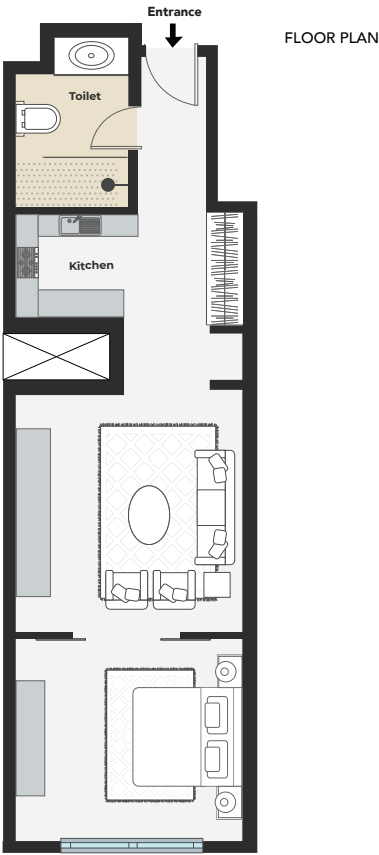
## Floor Plans





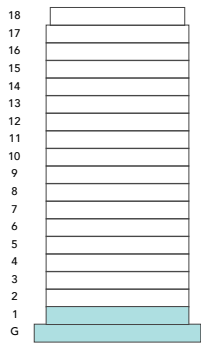


STUDIO APARTMENTS  
**TYPE : A**

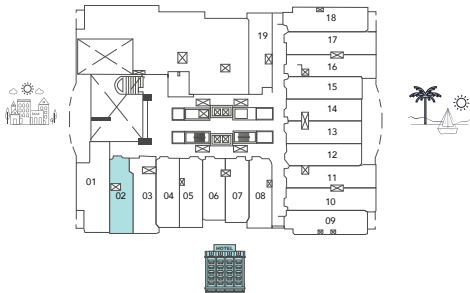


UNITS, G-02, 102

TOTAL UNIT SIZE	55.40	SQ.M	596.10	SQ.FT
-----------------	-------	------	--------	-------



KEY SECTION

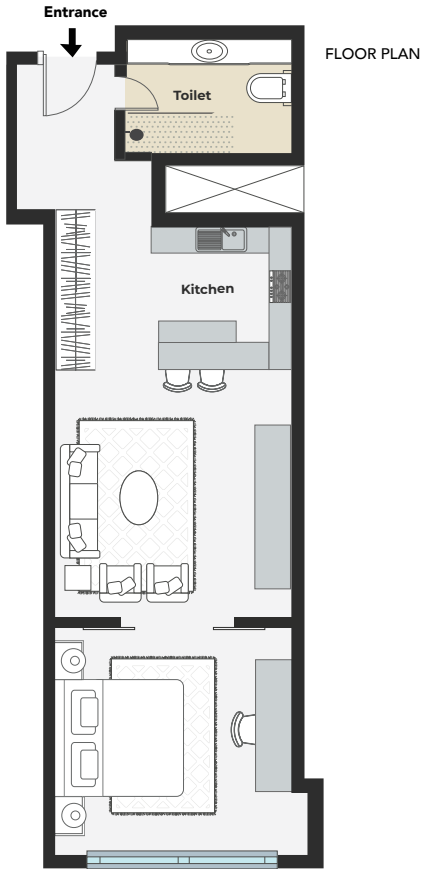


KEY PLAN

Disclaimer: All dimensions are imperial and metric, and measured from finish to finish excluding construction tolerances. 2. All materials, dimensions, and drawings are approximate only. 3. Actual area may vary from the stated area. 4. Drawings not to scale. 5. All images used are for illustrative purposes only and do not represent the actual size, features, specifications, fittings, and furnishings. 6. Refer to the Sales Offer for the exact sizes.

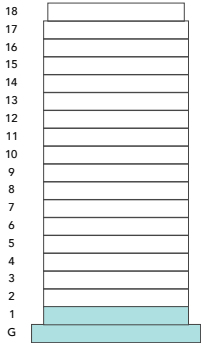


STUDIO APARTMENTS  
**TYPE : B**

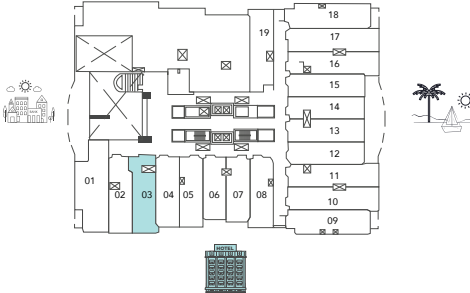


UNITS, G-03, 103

TOTAL UNIT SIZE	59.90	SQ.M	644.52	SQ.FT
-----------------	-------	------	--------	-------



KEY SECTION



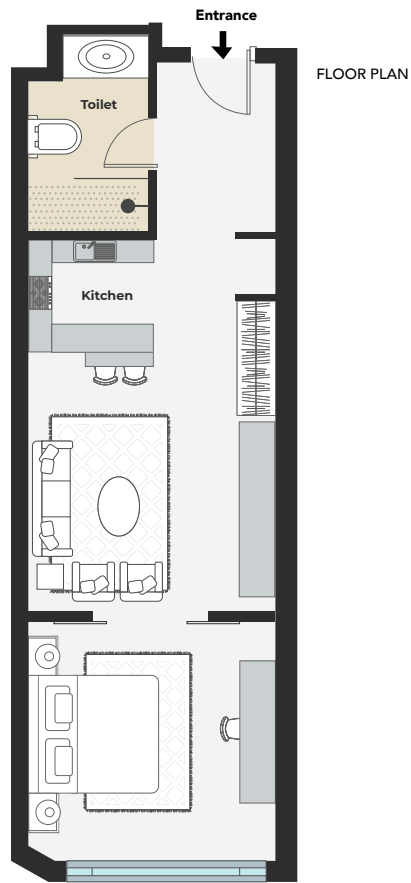
KEY PLAN

FLOOR PLANS



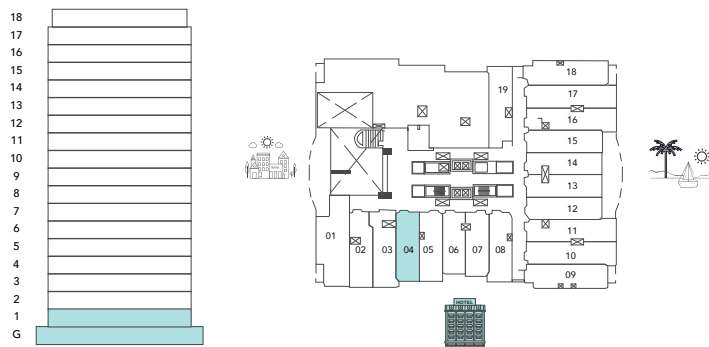


STUDIO APARTMENTS  
**TYPE : C**



UNITS, G-04, 104

TOTAL UNIT SIZE	54.80	SQ.M	589.65	SQ.FT
-----------------	-------	------	--------	-------



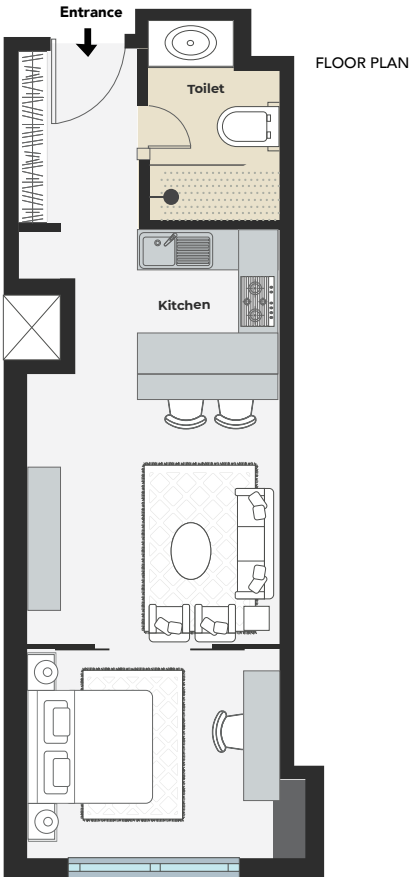
KEY SECTION

KEY PLAN

Disclaimer: All dimensions are imperial and metric, and measured from finish to finish excluding construction tolerances. 2. All materials, dimensions, and drawings are approximate only. 3. Actual area may vary from the stated area. 4. Drawings not to scale. 5. All images used are for illustrative purposes only and do not represent the actual size, features, specifications, fittings, and furnishings. 6. Refer to the Sales Offer for the exact sizes.

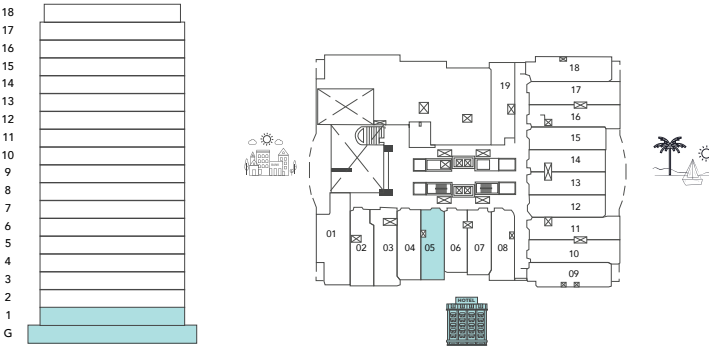


STUDIO APARTMENTS  
**TYPE : D**



UNITS, G-05, 105

TOTAL UNIT SIZE	54.50	SQ.M	586.42	SQ.FT
-----------------	-------	------	--------	-------



KEY SECTION

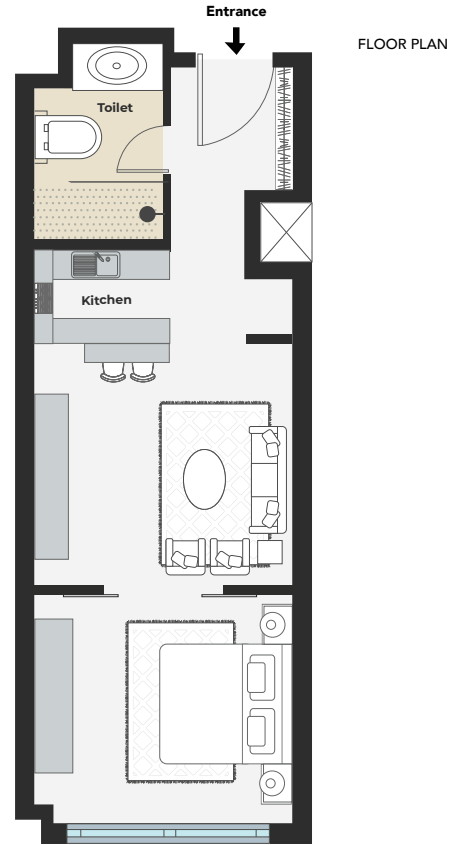
KEY PLAN

FLOOR PLANS





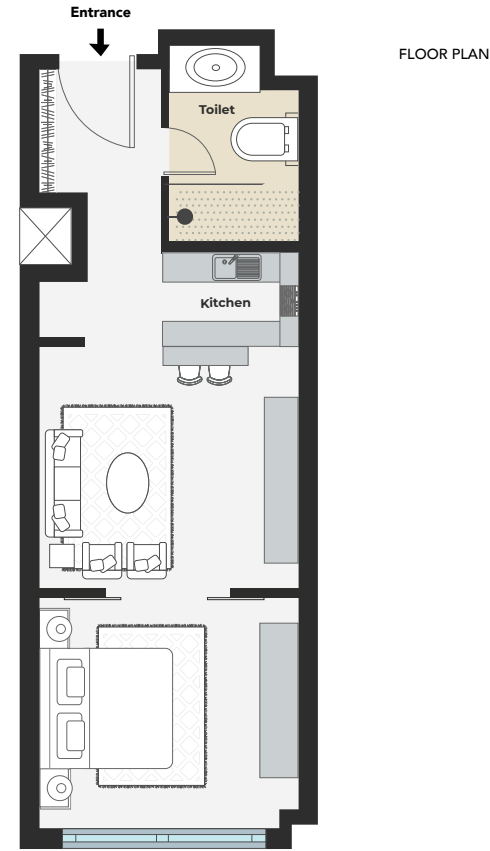
STUDIO APARTMENTS  
TYPE : E



FLOOR PLANS

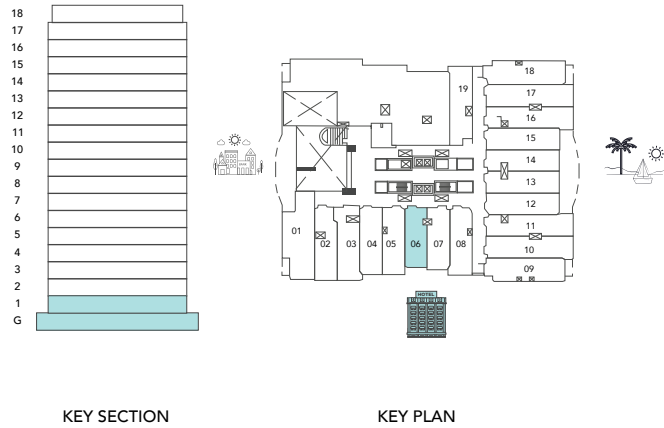


STUDIO APARTMENTS  
TYPE : F



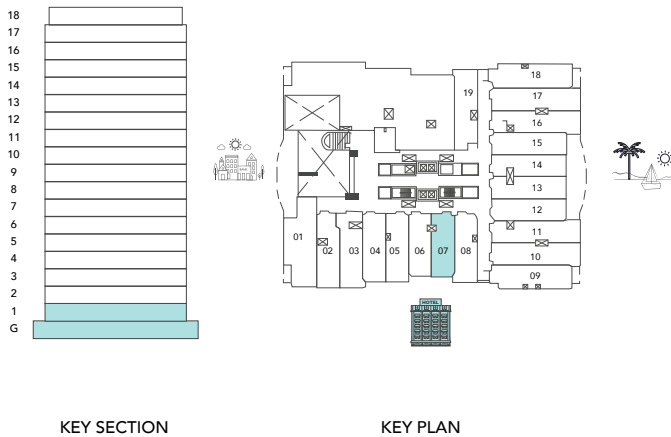
UNITS, G-06, 106

G-06 TOTAL UNIT SIZE	49.10	SQ.M	528.32	SQ.FT
106 TOTAL UNIT SIZE	49.0	SQ.M	527.24	SQ.FT



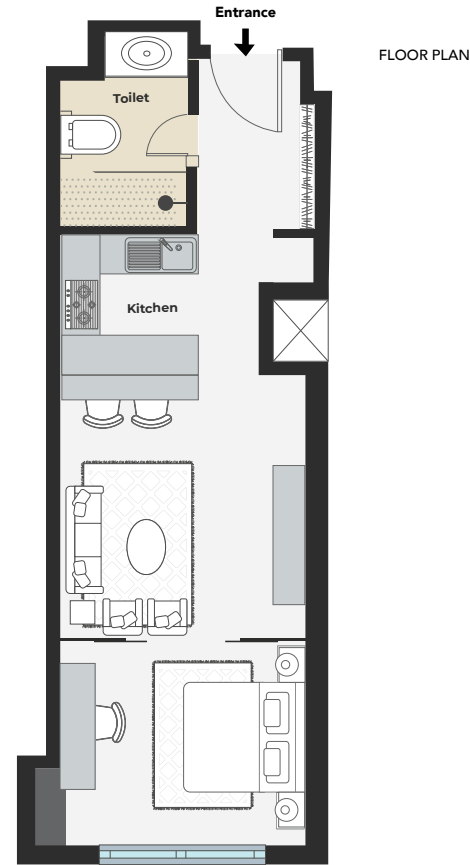
UNITS, G-07, 107

G-07 TOTAL UNIT SIZE	49.10	SQ.M	528.32	SQ.FT
107 TOTAL UNIT SIZE	49.0	SQ.M	527.24	SQ.FT



Disclaimer: All dimensions are imperial and metric, and measured from finish to finish excluding construction tolerances. 2. All materials, dimensions, and drawings are approximate only. 3. Actual area may vary from the stated area. 4. Drawings not to scale. 5. All images used are for illustrative purposes only and do not represent the actual size, features, specifications, fittings, and furnishings. 6. Refer to the Sales Offer for the exact sizes.



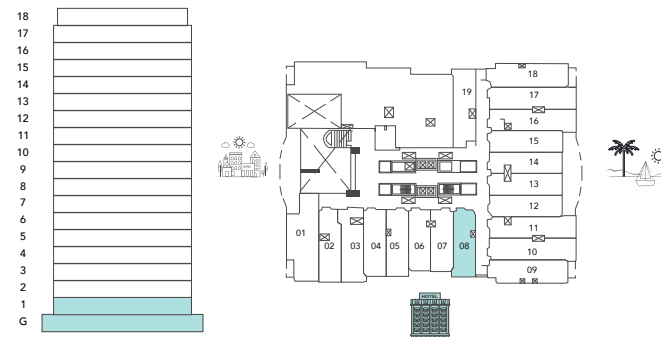


FLOOR PLAN

## STUDIO APARTMENTS TYPE : G

UNITS, G-08, 108

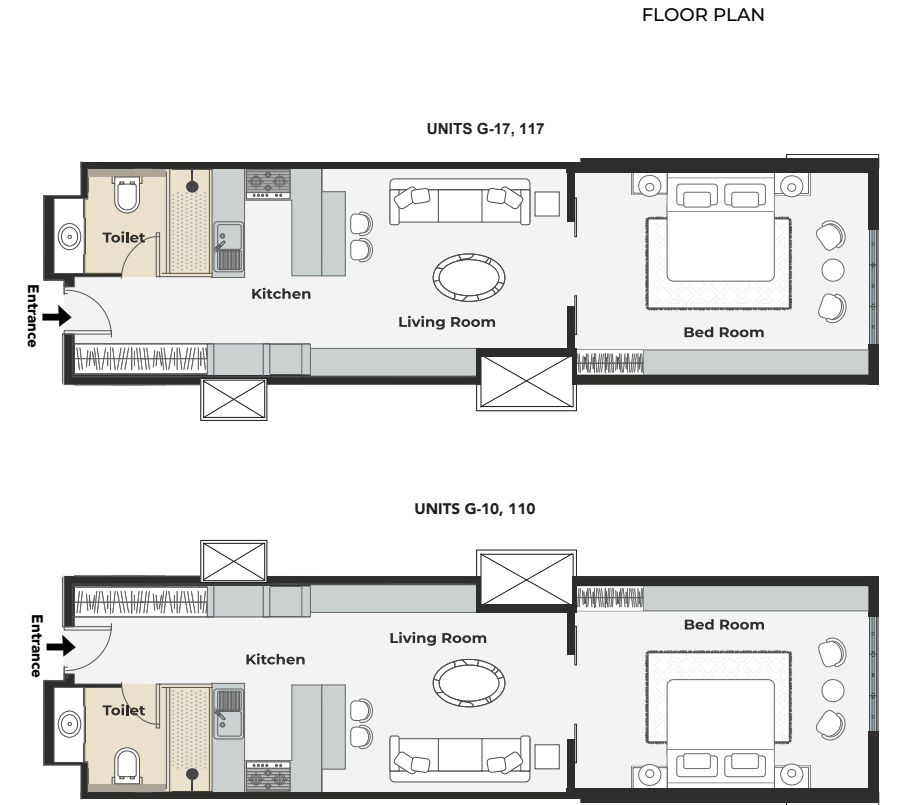
G-08 TOTAL UNIT SIZE	54.0	SQ.M	581.04	SQ.FT
108 TOTAL UNIT SIZE	53.80	SQ.M	578.89	SQ.FT



KEY SECTION

KEY PLAN

Disclaimer: All dimensions are imperial and metric, and measured from finish to finish excluding construction tolerances. 2. All materials, dimensions, and drawings are approximate only. 3. Actual area may vary from the stated area. 4. Drawings not to scale. 5. All images used are for illustrative purposes only and do not represent the actual size, features, specifications, fittings, and furnishings. 6. Refer to the Sales Offer for the exact sizes.

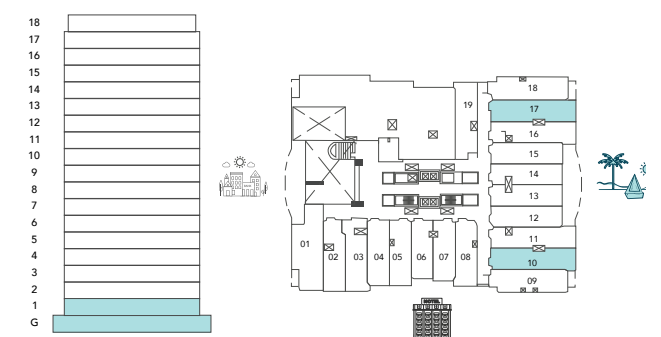


FLOOR PLAN

## STUDIO APARTMENTS TYPE : H

UNITS, G-10, G-17, 110, 117

G-10 TOTAL UNIT SIZE	67.4	SQ.M	725.22	SQ.FT
G-17 TOTAL UNIT SIZE	66.9	SQ.M	719.84	SQ.FT
110 TOTAL UNIT SIZE	67.4	SQ.M	725.22	SQ.FT
117 TOTAL UNIT SIZE	67.4	SQ.M	725.22	SQ.FT



KEY SECTION

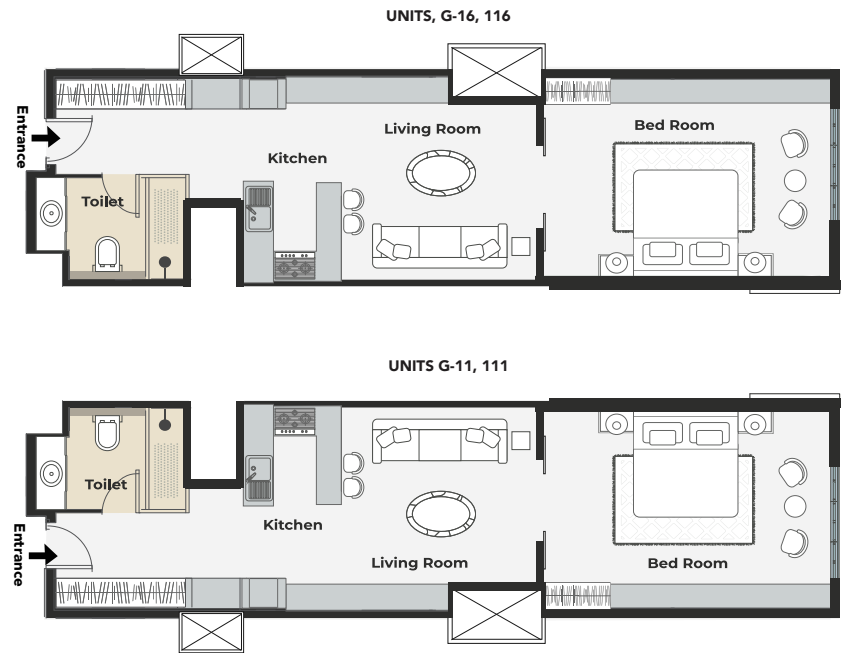
KEY PLAN

FLOOR PLANS



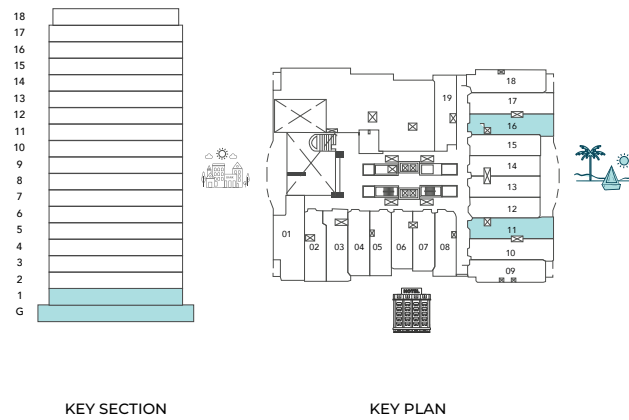


FLOOR PLAN



STUDIO APARTMENTS  
TYPE : I

UNITS, G-11, G-16, 111, 116				
G-11 TOTAL UNIT SIZE	65.9	SQ.M	709.08	SQ.FT
G-16 TOTAL UNIT SIZE	65.9	SQ.M	709.08	SQ.FT
111 TOTAL UNIT SIZE	66.0	SQ.M	710.16	SQ.FT
116 TOTAL UNIT SIZE	66.0	SQ.M	710.16	SQ.FT



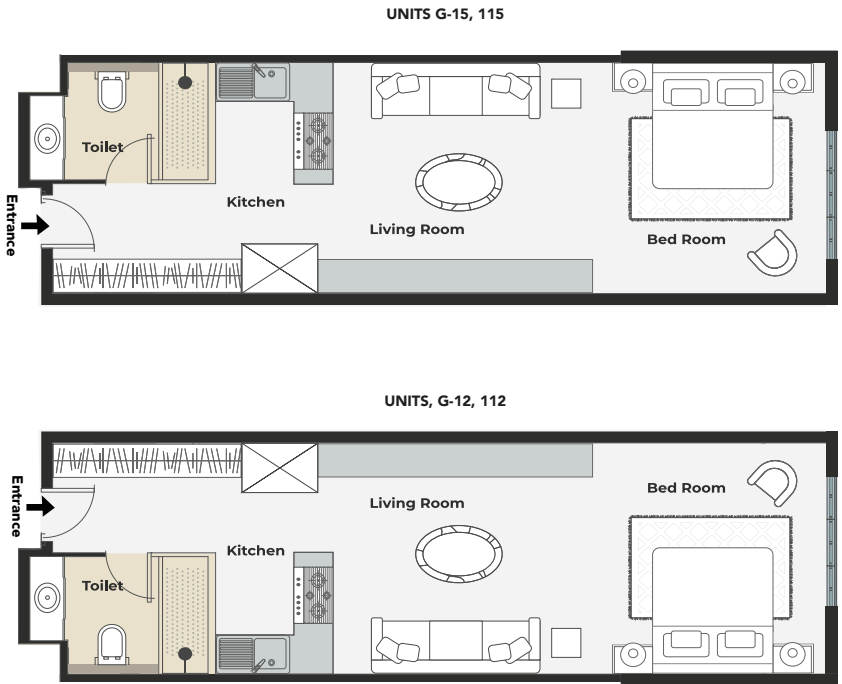
KEY SECTION

KEY PLAN

Disclaimer: All dimensions are imperial and metric, and measured from finish to finish excluding construction tolerances. 2. All materials, dimensions, and drawings are approximate only. 3. Actual area may vary from the stated area. 4. Drawings not to scale. 5. All images used are for illustrative purposes only and do not represent the actual size, features, specifications, fittings, and furnishings. 6. Refer to the Sales Offer for the exact sizes.

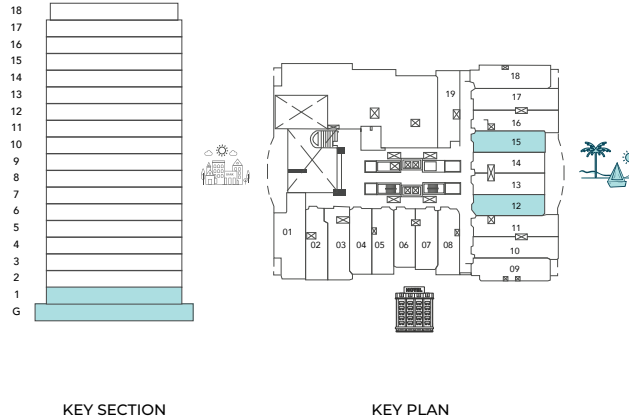


FLOOR PLAN



STUDIO APARTMENTS  
TYPE : J

UNITS, G-12, G-15, 112, 115				
G-12 TOTAL UNIT SIZE	57.4	SQ.M	617.62	SQ.FT
G-15 TOTAL UNIT SIZE	57.4	SQ.M	617.62	SQ.FT
112 TOTAL UNIT SIZE	57.4	SQ.M	617.62	SQ.FT
115 TOTAL UNIT SIZE	57.4	SQ.M	617.62	SQ.FT



KEY SECTION

KEY PLAN





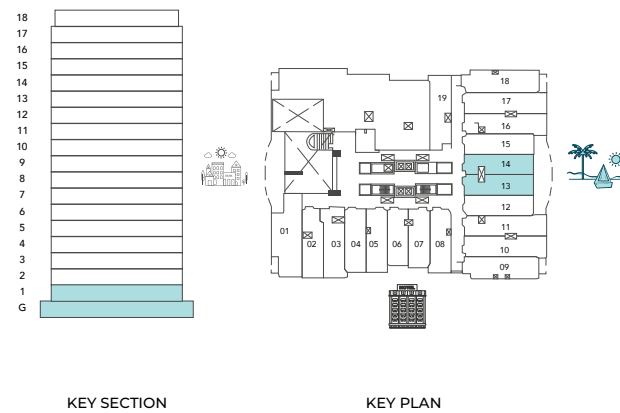
FLOOR PLAN  
FLOOR PLAN



## STUDIO APARTMENTS TYPE : K

UNITS, G-13, G-14, 113, 114

G-13 TOTAL UNIT SIZE	56.0	SQ.M	602.56	SQ.FT
G-14 TOTAL UNIT SIZE	56.0	SQ.M	602.56	SQ.FT
113 TOTAL UNIT SIZE	56.0	SQ.M	602.56	SQ.FT
114 TOTAL UNIT SIZE	56.0	SQ.M	602.56	SQ.FT

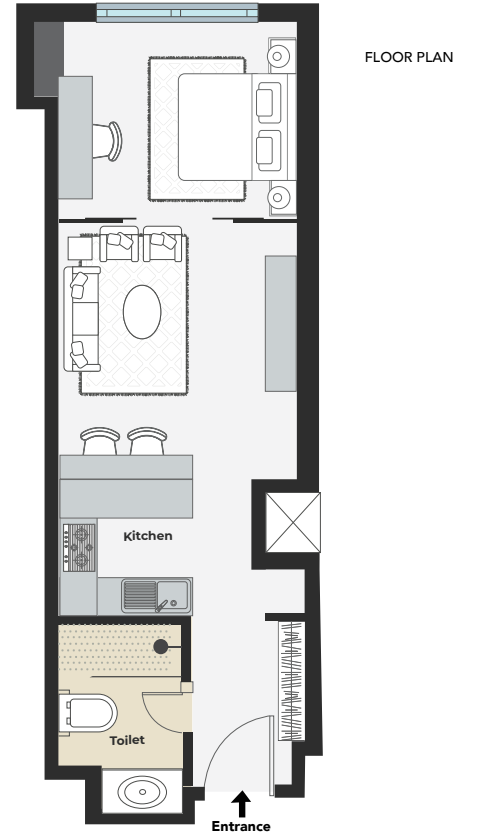


Disclaimer: All dimensions are imperial and metric, and measured from finish to finish excluding construction tolerances. 2. All materials, dimensions, and drawings are approximate only. 3. Actual area may vary from the stated area. 4. Drawings not to scale. 5. All images used are for illustrative purposes only and do not represent the actual size, features, specifications, fittings, and furnishings. 6. Refer to the Sales Offer for the exact sizes.



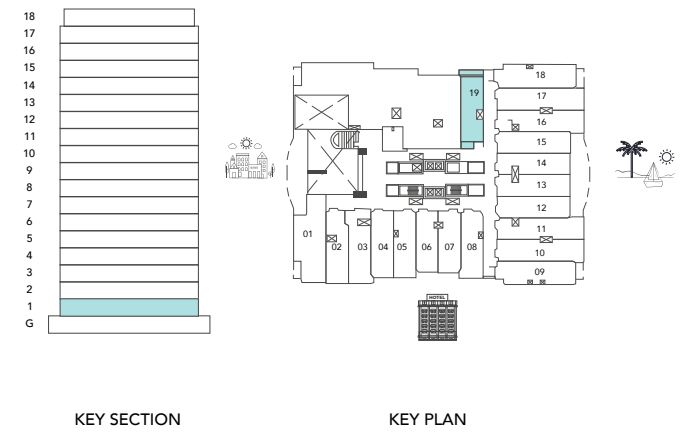
## FLOOR PLANS

## STUDIO APARTMENTS TYPE : L

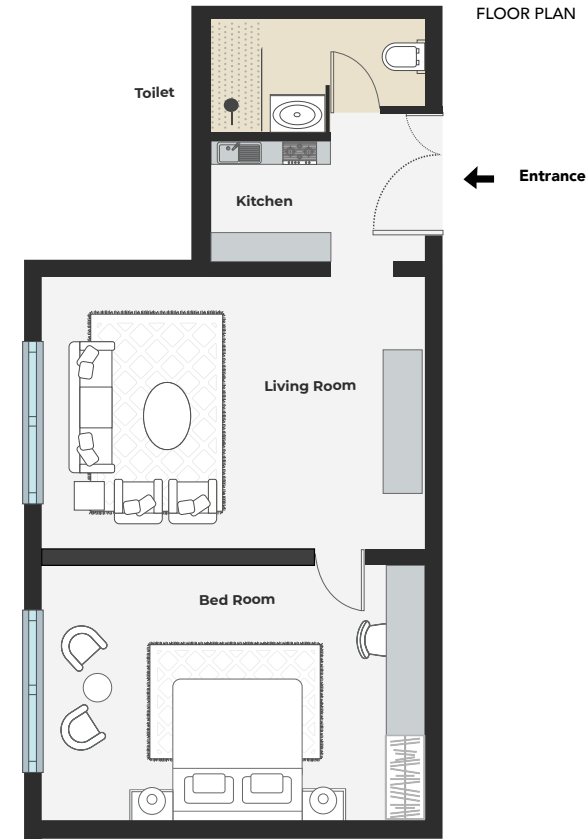


UNITS, 119

TOTAL UNIT SIZE	60.30	SQ.M	648.83	SQ.FT
-----------------	-------	------	--------	-------



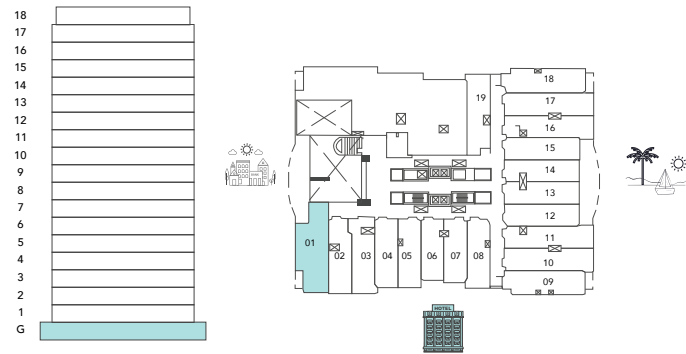




1 BEDROOM APARTMENTS  
**TYPE : A**

UNITS, G-01

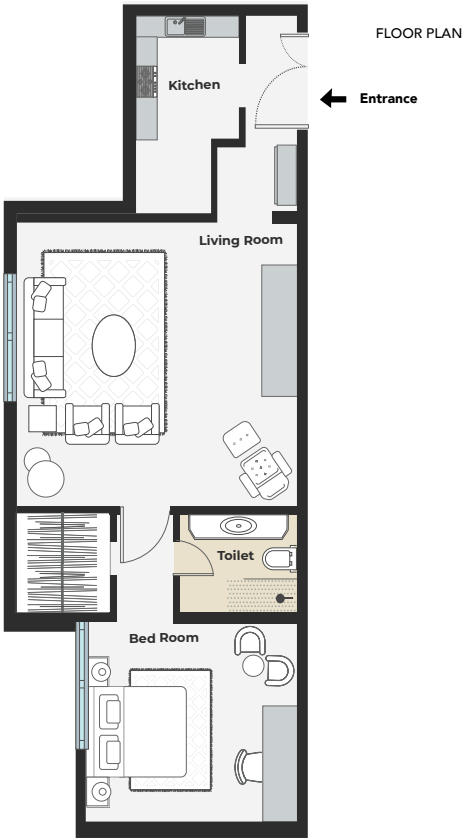
TOTAL UNIT SIZE	67.70	SQ.M	728.45	SQ.FT
-----------------	-------	------	--------	-------



KEY SECTION

KEY PLAN

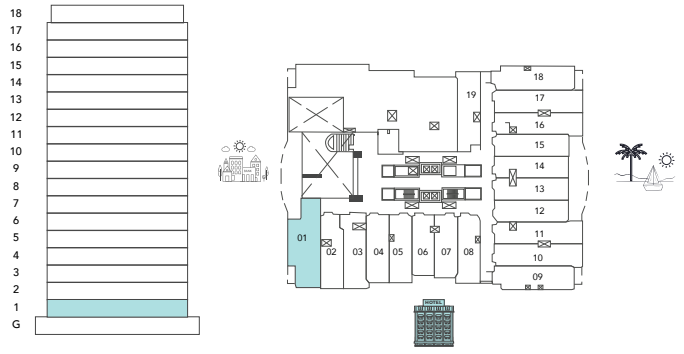
Disclaimer: All dimensions are imperial and metric, and measured from finish to finish excluding construction tolerances. 2. All materials, dimensions, and drawings are approximate only. 3. Actual area may vary from the stated area. 4. Drawings not to scale. 5. All images used are for illustrative purposes only and do not represent the actual size, features, specifications, fittings, and furnishings. 6. Refer to the Sales Offer for the exact sizes.



1 BEDROOM APARTMENTS  
**TYPE : B**

UNITS, 101

TOTAL UNIT SIZE	88.40	SQ.M	951.18	SQ.FT
-----------------	-------	------	--------	-------



KEY SECTION

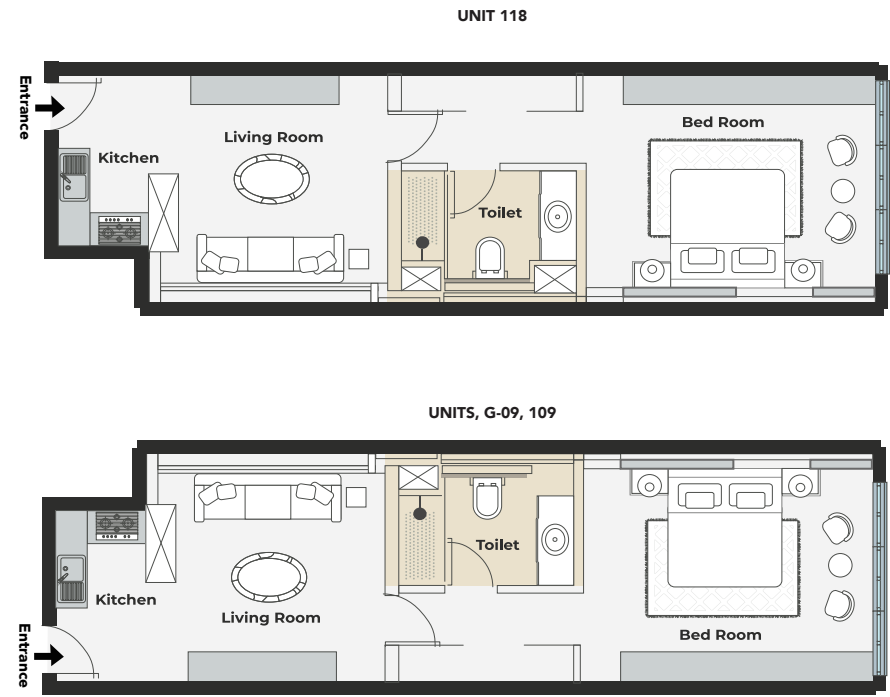
KEY PLAN

FLOOR PLANS





FLOOR PLAN



1 BEDROOM APARTMENTS  
TYPE : C

UNITS, G-09, 109, 118

G-09 TOTAL UNIT SIZE	64.30	SQ.M	691.87	SQ.FT
109 TOTAL UNIT SIZE	64.10	SQ.M	689.71	SQ.FT
118 TOTAL UNIT SIZE	64.40	SQ.M	692.94	SQ.FT



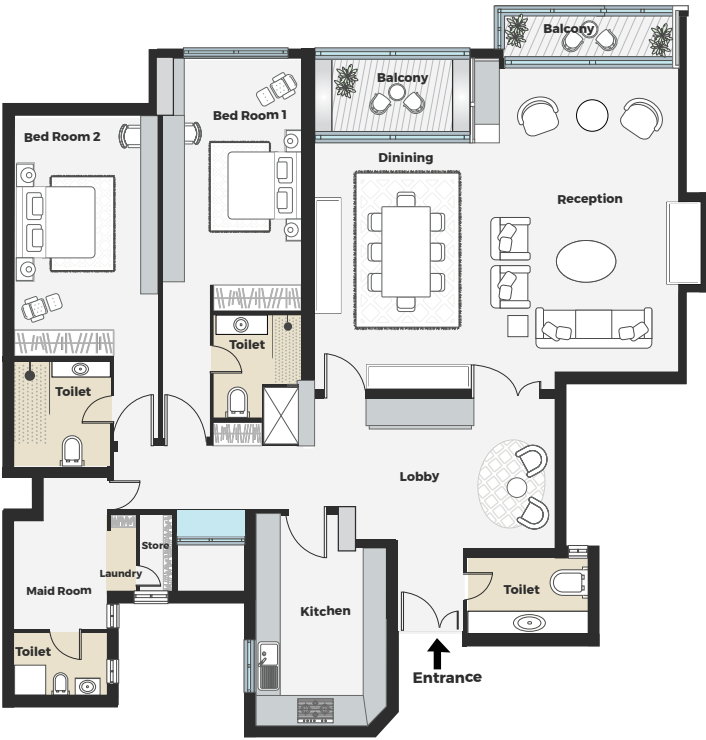
KEY SECTION

KEY PLAN

Disclaimer: All dimensions are imperial and metric, and measured from finish to finish excluding construction tolerances. 2. All materials, dimensions, and drawings are approximate only. 3. Actual area may vary from the stated area. 4. Drawings not to scale. 5. All images used are for illustrative purposes only and do not represent the actual size, features, specifications, fittings, and furnishings. 6. Refer to the Sales Offer for the exact sizes.



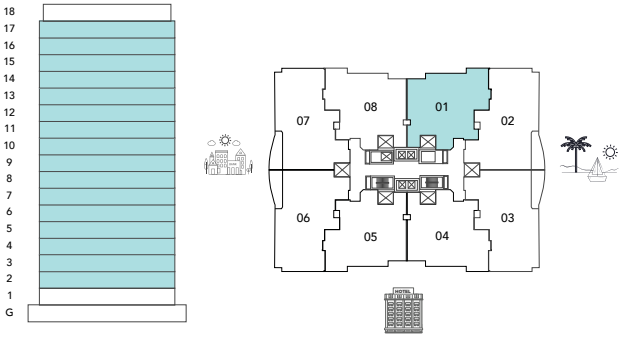
FLOOR PLAN



2 BEDROOM APARTMENTS  
TYPE : A

UNITS 201, 301, 401, 501, 601, 701, 801, 901, 1001, 1101, 1201, 1301, 1401, 1501, 1601, 1701

TOTAL UNIT SIZE	221.90	SQ.M	2387.64	SQ.FT
-----------------	--------	------	---------	-------



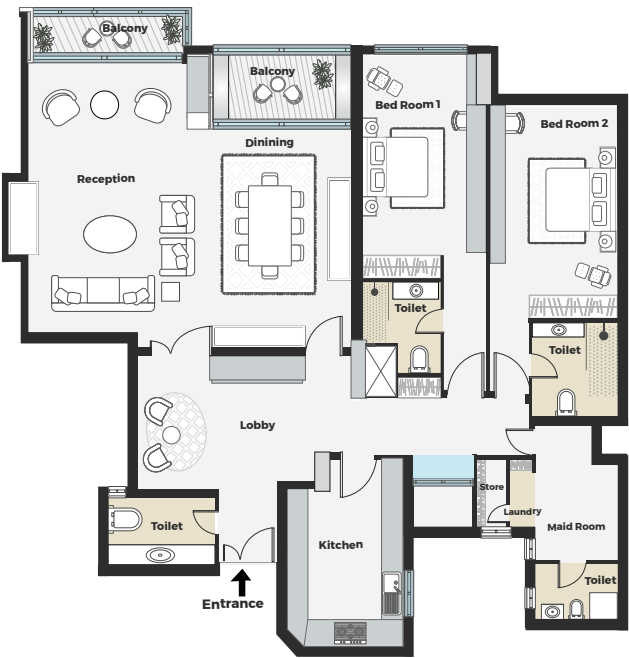
KEY SECTION

KEY PLAN





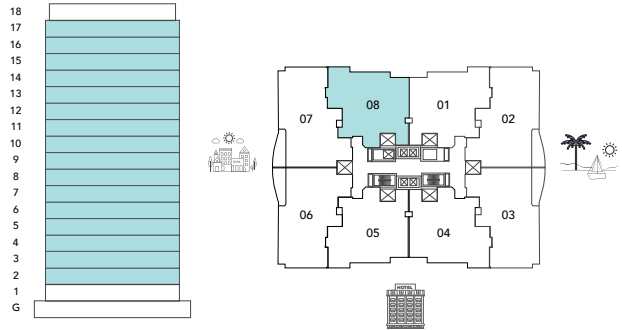
FLOOR PLAN



2 BEDROOM APARTMENTS  
**TYPE : B**

UNITS 208, 308, 408, 508, 608, 708, 808, 908, 1008, 1108, 1208, 1308, 1408, 1508, 1608, 1708

TOTAL UNIT SIZE	221.90 SQ.M	2387.64 SQ.FT
-----------------	-------------	---------------



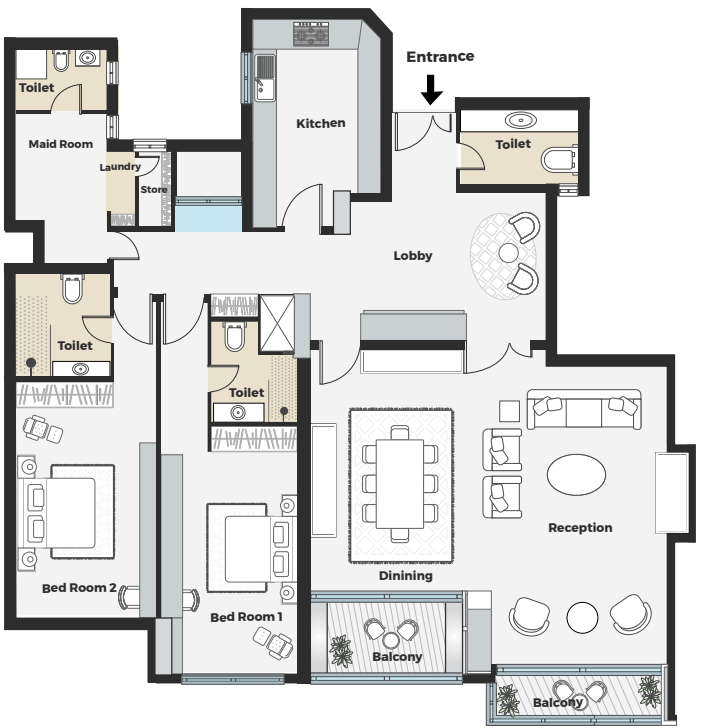
KEY SECTION

KEY PLAN

Disclaimer: All dimensions are imperial and metric, and measured from finish to finish excluding construction tolerances. 2. All materials, dimensions, and drawings are approximate only. 3. Actual area may vary from the stated area. 4. Drawings not to scale. 5. All images used are for illustrative purposes only and do not represent the actual size, features, specifications, fittings, and furnishings. 6. Refer to the Sales Offer for the exact sizes.



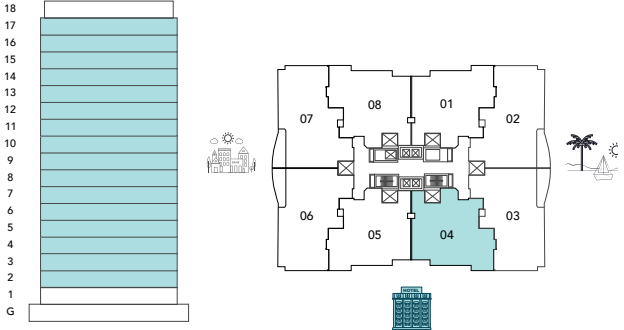
FLOOR PLAN



2 BEDROOM APARTMENTS  
**TYPE : C**

UNITS 204, 304, 404, 504, 604, 704, 804, 904, 1004, 1104, 1204, 1304, 1404, 1504, 1604, 1704

TOTAL UNIT SIZE	221.90 SQ.M	2387.64 SQ.FT
-----------------	-------------	---------------



KEY SECTION

KEY PLAN





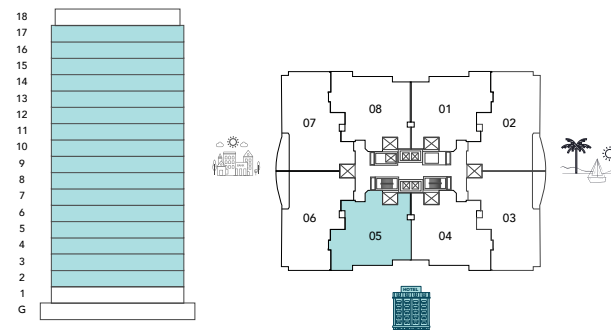
FLOOR PLAN



## 2 BEDROOM APARTMENTS TYPE : D

UNITS 205, 305, 405, 505, 605, 705, 805, 905, 1005, 1105, 1205, 1305, 1405, 1505, 1605, 1705

TOTAL UNIT SIZE	221.90 SQ.M	2387.64 SQ.FT
-----------------	-------------	---------------



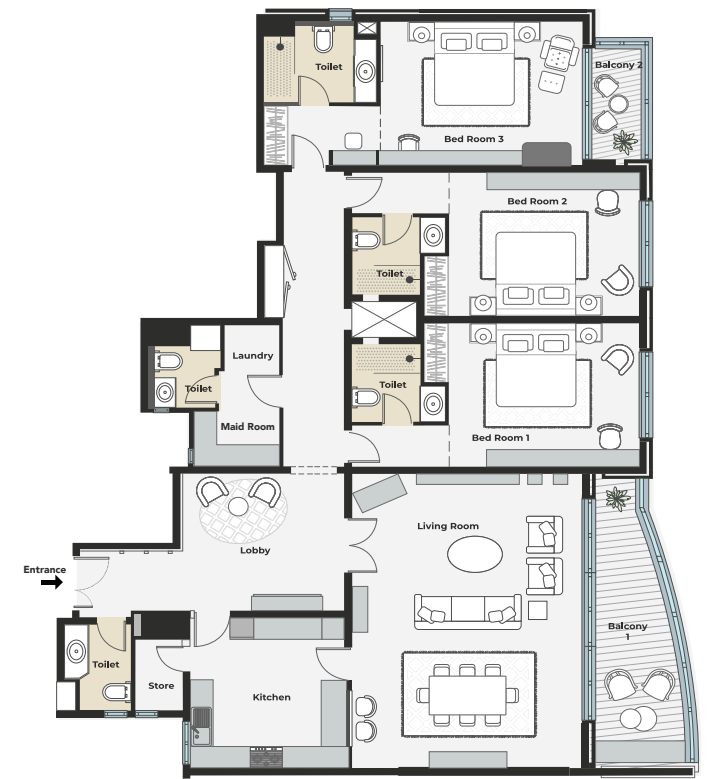
KEY SECTION

KEY PLAN

Disclaimer: All dimensions are imperial and metric, and measured from finish to finish excluding construction tolerances. 2. All materials, dimensions, and drawings are approximate only. 3. Actual area may vary from the stated area. 4. Drawings not to scale. 5. All images used are for illustrative purposes only and do not represent the actual size, features, specifications, fittings, and furnishings. 6. Refer to the Sales Offer for the exact sizes.



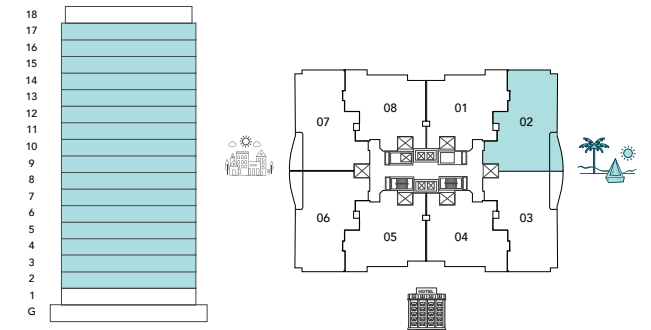
FLOOR PLAN



## 3 BEDROOM APARTMENTS TYPE : A

UNITS 202, 302, 402, 502, 602, 702, 802, 902, 1002, 1102, 1202, 1302, 1402, 1502, 1602, 1702

TOTAL UNIT SIZE	262.00 SQ.M	2819.12 SQ.FT
-----------------	-------------	---------------



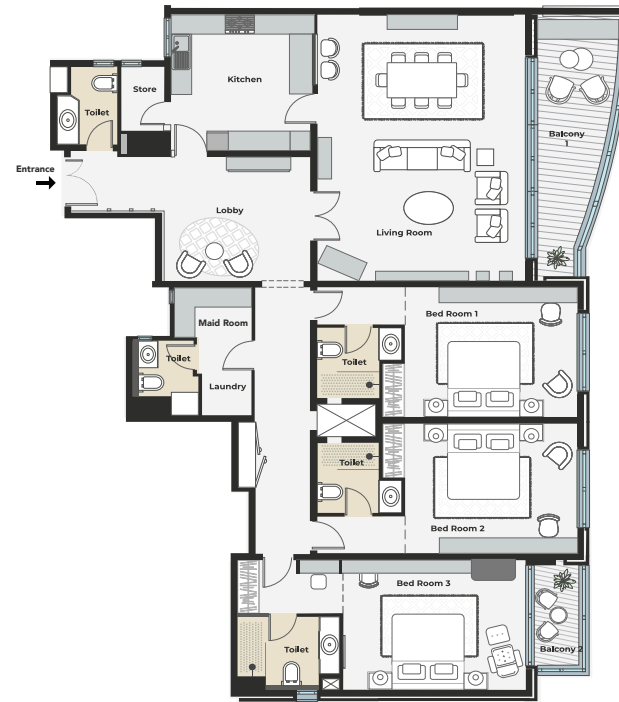
KEY SECTION

KEY PLAN





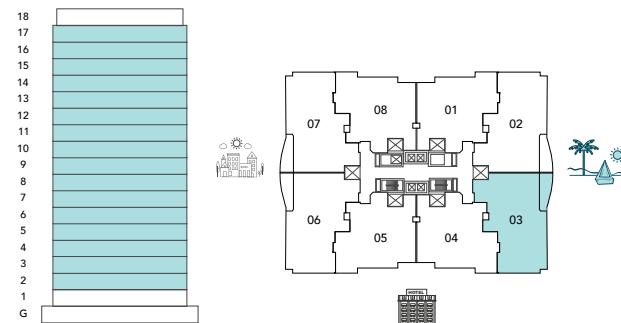
FLOOR PLAN



### 3 BEDROOM APARTMENTS TYPE : B

UNITS 203, 303, 403, 503, 603, 703, 803, 903, 1003, 1103, 1203, 1303, 1403, 1503, 1603, 1703

TOTAL UNIT SIZE	261.60	SQ.M	2814.81	SQ.FT
-----------------	--------	------	---------	-------



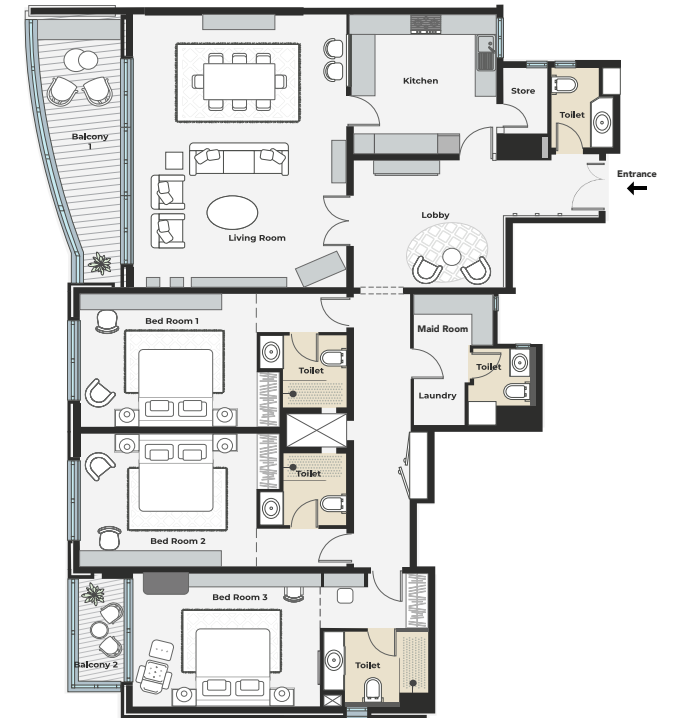
KEY SECTION

KEY PLAN

Disclaimer: All dimensions are imperial and metric, and measured from finish to finish excluding construction tolerances. 2. All materials, dimensions, and drawings are approximate only. 3. Actual area may vary from the stated area. 4. Drawings not to scale. 5. All images used are for illustrative purposes only and do not represent the actual size, features, specifications, fittings, and furnishings. 6. Refer to the Sales Offer for the exact sizes.



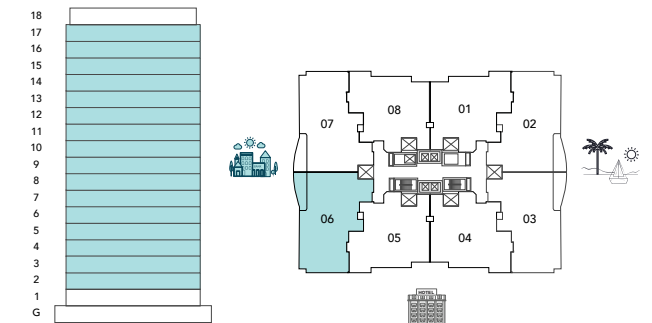
FLOOR PLAN



### 3 BEDROOM APARTMENTS TYPE : C

UNITS 206, 306, 406, 506, 606, 706, 806, 906, 1006, 1106, 1206, 1306, 1406, 1506, 1606, 1706

TOTAL UNIT SIZE	262.00	SQ.M	2819.12	SQ.FT
-----------------	--------	------	---------	-------



KEY SECTION

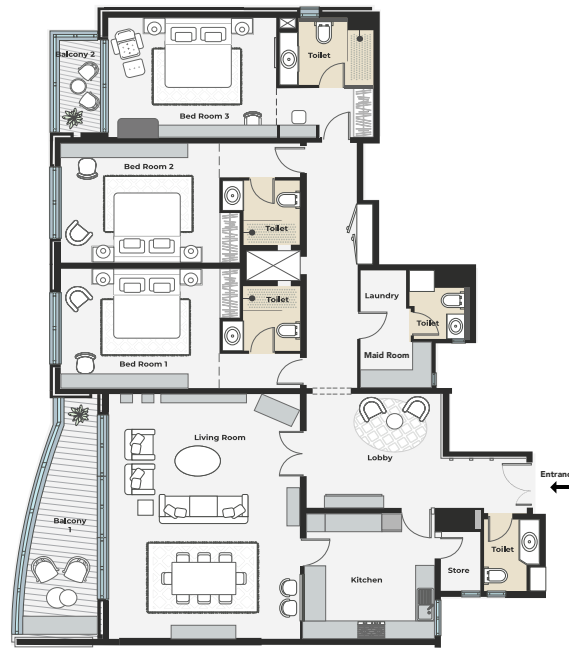
KEY PLAN

Disclaimer: All dimensions are imperial and metric, and measured from finish to finish excluding construction tolerances. 2. All materials, dimensions, and drawings are approximate only. 3. Actual area may vary from the stated area. 4. Drawings not to scale. 5. All images used are for illustrative purposes only and do not represent the actual size, features, specifications, fittings, and furnishings. 6. Refer to the Sales Offer for the exact sizes.





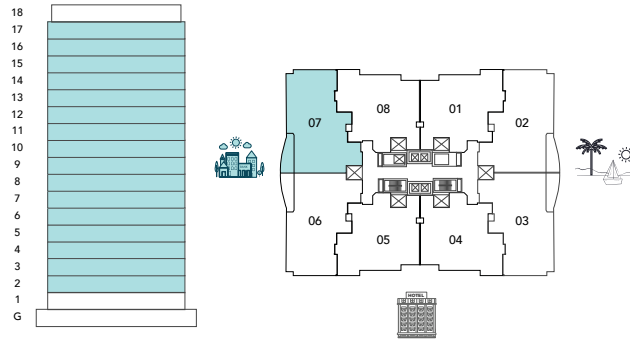
FLOOR PLAN



3 BEDROOM APARTMENTS  
**TYPE : D**

UNITS 207, 307, 407, 507, 607, 707, 807, 907, 1007, 1107, 1207, 1307, 1407, 1507, 1607, 1707

TOTAL UNIT SIZE	261.60 SQ.M	2814.81 SQ.FT
-----------------	-------------	---------------



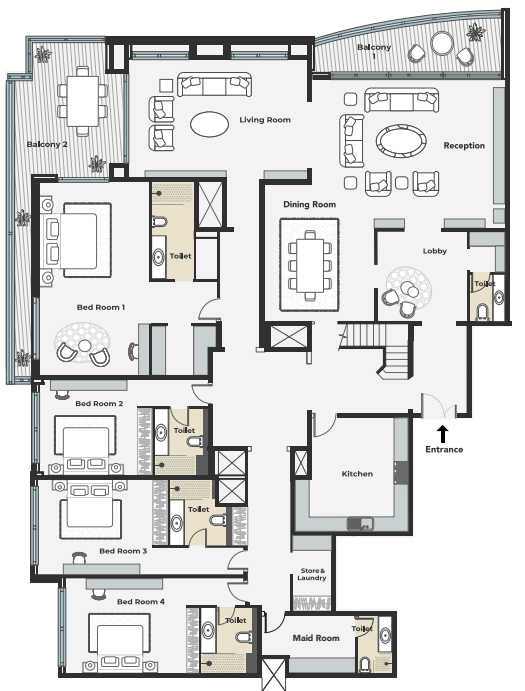
KEY SECTION

KEY PLAN

Disclaimer: All dimensions are imperial and metric, and measured from finish to finish excluding construction tolerances. 2. All materials, dimensions, and drawings are approximate only. 3. Actual area may vary from the stated area. 4. Drawings not to scale. 5. All images used are for illustrative purposes only and do not represent the actual size, features, specifications, fittings, and furnishings. 6. Refer to the Sales Offer for the exact sizes.



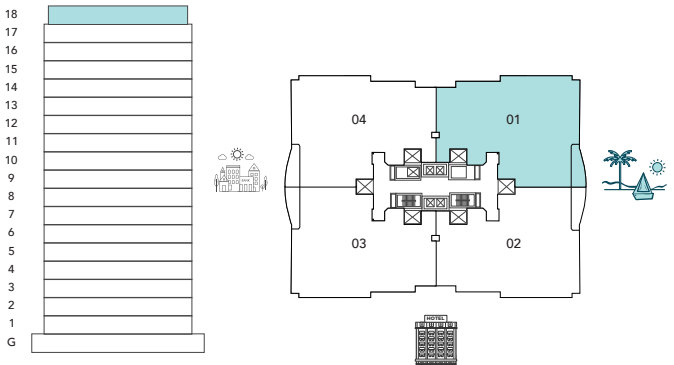
FLOOR PLAN



PENTHOUSES APARTMENTS  
**TYPE : A**

UNITS 1801

TOTAL UNIT SIZE	488.30 SQ.M	5256.02 SQ.FT
-----------------	-------------	---------------



KEY SECTION

KEY PLAN

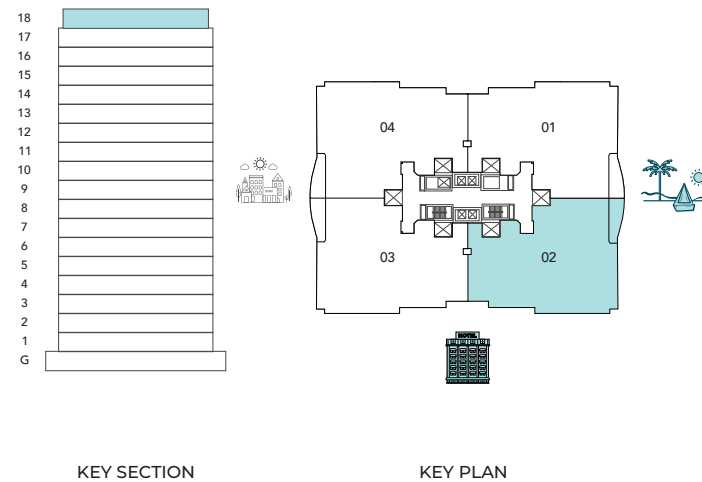




PENTHOUSES APARTMENTS  
**TYPE : B**



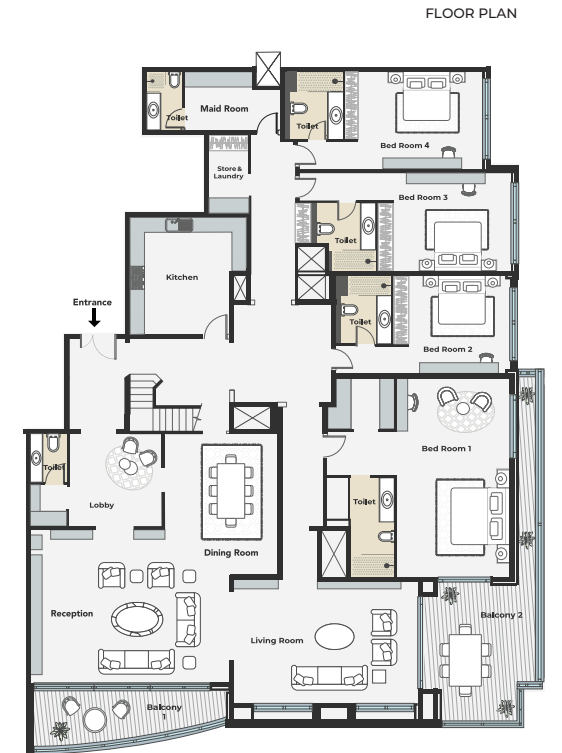
UNITS 1802			
TOTAL UNIT SIZE	488.30	SQ.M	5256.02 SQ.FT



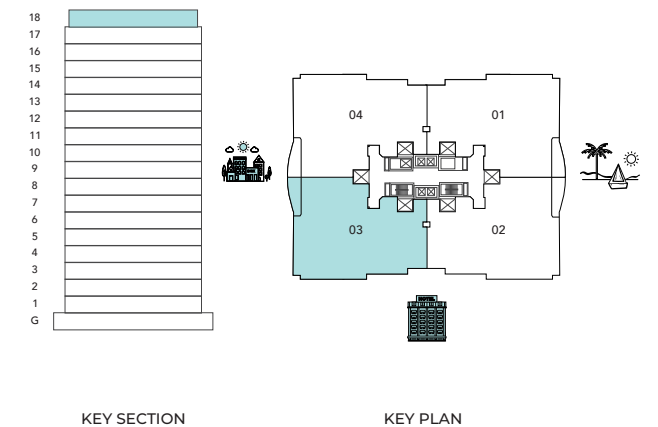
Disclaimer: All dimensions are imperial and metric, and measured from finish to finish excluding construction tolerances. 2. All materials, dimensions, and drawings are approximate only. 3. Actual area may vary from the stated area. 4. Drawings not to scale. 5. All images used are for illustrative purposes only and do not represent the actual size, features, specifications, fittings, and furnishings. 6. Refer to the Sales Offer for the exact sizes.



PENTHOUSES APARTMENTS  
**TYPE : C**



UNITS 1803			
TOTAL UNIT SIZE	488.30	SQ.M	5256.02 SQ.FT







PENTHOUSES APARTMENTS  
TYPE : D



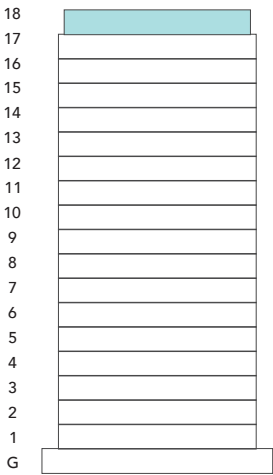
FLOOR PLAN



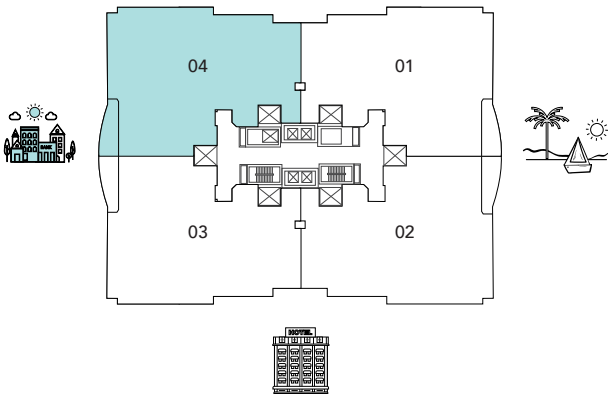
FLOOR PLANS

UNITS 1804

TOTAL UNIT SIZE	488.30 SQ.M	5256.02 SQ.FT
-----------------	-------------	---------------



KEY SECTION



KEY PLAN

Disclaimer: All dimensions are imperial and metric, and measured from finish to finish excluding construction tolerances. 2. All materials, dimensions, and drawings are approximate only. 3. Actual area may vary from the stated area. 4. Drawings not to scale. 5. All images used are for illustrative purposes only and do not represent the actual size, features, specifications, fittings, and furnishings. 6. Refer to the Sales Offer for the exact sizes.



DEVELOPED BY



مبارك البشاره للتطوير العقاري  
Mubarak AlBesharah Real Estate Development

Mubarak Al Beshara Real Estate Development Company is a premier real estate developer dedicated to both creating new and revitalizing existing residential, commercial, and mixed-use properties. With a commitment to excellence, innovation, and sustainability, we pride ourselves on transforming the landscape by developing and renovating dynamic living and working environments that enhance the quality of life for our communities.

PRESENTED BY

## EVOLUTIONS

Evolutions is the first-of-its-kind real estate intelligence hub in Dubai that combines a concept store of exclusive developments, a 360-degree consultancy that specializes in the entire real estate lifecycle, and a global network of industry experts to facilitate connections with major industry players. The company serves as a bridge connecting all stakeholders, including developers, investors, brokers, and end-users. It actively supports the interests of every stakeholder, working towards creating, developing, and delivering valuable assets.



# the Residence

C O N T A C T   U S

800 EVOL (3865) — [info@evolutions.ae](mailto:info@evolutions.ae)