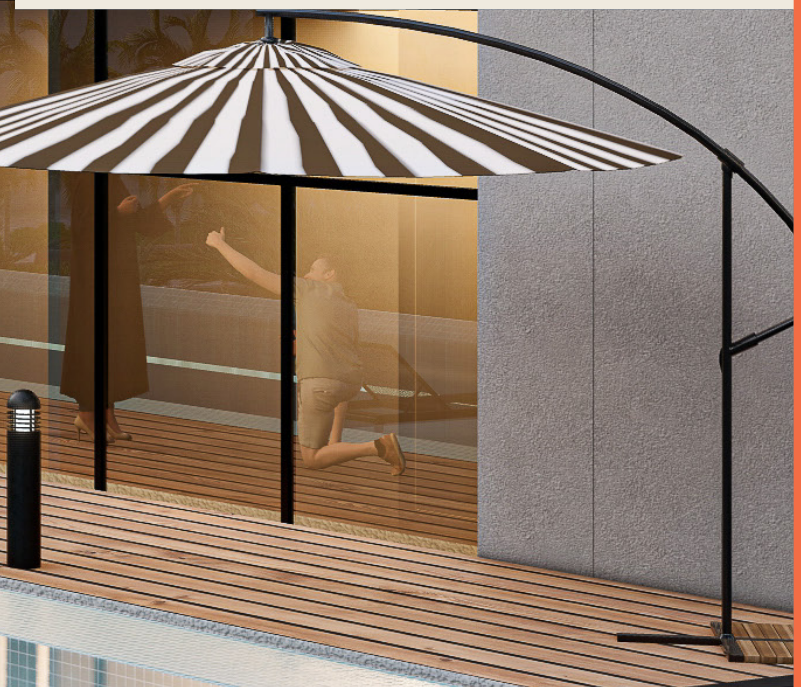




— PG —
ONE
AT
AL FURJAN



BE AT ONE

DEVELOPMENT BY

— PG —

Brought to you by PG Properties Development, our vision is to become the most reputed private developer. Delivering quality, boutique, contemporary residential units at value for money price points, encouraging both end users and investors.

39th Floor, HDS Business Centre, Cluster M, JLT, Dubai, UAE www.puregoldliving.com

Designed To Enhance Every Aspect Of Modern Living

Introducing PG ONE at Al Furjan, a residential tower of stylish studio to three-bed split-level apartments designed to fulfil every comfort of modern living. PG ONE is meticulously crafted to provide unparalleled comfort and convenience.

From thoughtfully designed living spaces to state-of-the-art amenities, every detail is tailored to create a sanctuary of relaxation and enjoyment.

Embrace a lifestyle of endless possibilities at PG ONE, where you can live life to the fullest and thrive in a community designed for you.

PG ONE at Al Furjan elevation



Only **2**
Minutes to

>Discovery
Garden
Metro

10
Minutes to

>IBN
Battuta

15
Minutes to

>Jebel Ali Free Zone
> Mall Of Emirates
> Al Maktoum
International Airport

20
Minutes to

>Dubai Mall

30
Minutes to

> Dubai
International
Airport

Perfectly Placed

Ideally situated within Dubai's highly sought-after commuter belt, PG ONE at Al Furjan is conveniently located for Dubai's bustling business districts, stunning beaches, and upscale shopping and dining havens.

Remarkably, it resides a mere 15 minutes away from Al Maktoum International Airport and a quick 30 minutes from Dubai International Airport, making it an ideal destination for hassle-free travel.

Looking ahead, PG ONE at Al Furjan will enjoy enhanced connectivity with Dubai through the **Discovery Garden Metro Station (only 2 minutes walking distance)**. Access to Dubai could not be easier.

DISCOVERY GARDEN METRO – ONLY 2 MINS WALK



DEVELOPMENT BY

— PG —



Welcome To PG ONE

PG ONE at Al Furjan provides a secure and comprehensive setting that caters to your work, relaxation, and recreational needs. The range of amenities is thoughtfully designed to meet your every need.

PG ONE at Al Furjan Elevation



2 mins walking
distance to
Discovery
Garden Metro



24-hour front desk
attendant



Concierge service



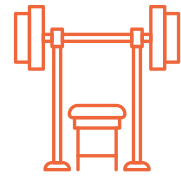
Roof top terrace



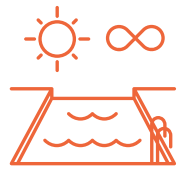
Outdoor BBQ with
private seating



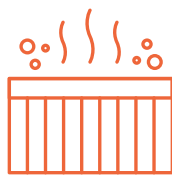
Yoga Studio



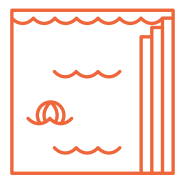
Fully-equipped
gymnasium



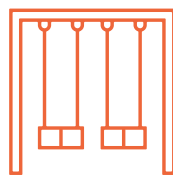
Infinity
swimming pool



Jacuzzi



Kids pool



Outdoor kids
play area



Smart home system



High-speed Internet
connectivity



CCTV

PG ONE Pool deck

Furniture only for illustration purpose and not included. Design detail subject to change.



DEVELOPMENT BY

-PG-

Mobile store

Furniture only for illustration purpose and not included. Design detail subject to change.

Make An Entrance

Anticipate a warm reception in the spacious lobby area, where sophistication meets comfort.

Our dedicated concierge and security team are available 24/7, making sure you're supported and totally at ease.



Your Home, Your Rules

There's nothing like coming home. Kick off those shoes, sit back and just unwind — enjoy your own space that's been thoughtfully crafted to take care of all your needs.

Our three-bedroom duplex apartments each come with their own private elevator, pool and garden.



Furniture only for illustration purpose and not included. Design detail subject to change.



Impress Your Guests

With a fully equipped integrated kitchen, convenience never looked so appealing.

Entertaining at home is a breeze, thanks to the modern conveniences at your disposal. Dinner for four at a moment's notice? No problem. A quick, simple meal after a long day.



Wake Up Refreshed

Rise and shine to a beautiful new day. Refreshed and ready to go with unrivalled views over the city's beating heart.

PG ONE at Al Furjan is perfectly placed at the centre of everything that's happening, yet peaceful enough to leave you fully refreshed after a great night's sleep.



Furniture only for illustration purpose and not included. Design detail subject to change.

Furniture only for illustration purpose and not included. Design detail subject to change.



Your Space To Think

With integrated working space for professionals in mind in all of our apartments, PG ONE at Al Furjan is a place for where you can work, rest and play, all in one place.



All images are for illustration purpose only.

...And Relax

Achieving balance is the essence of life. At PG ONE at Al Furjan, you have the opportunity to be conscientious about your health and well-being with access to our in-house gymnasium and swimming pool.

Immerse yourself in a dedicated space that allows you to prioritize your well-being, free from the constraints of the 9-5 grind.

After a big day in the office or a thorough workout in the 1st floor gym, soak away the stress in PG ONE's exclusive infinity pool or jacuzzi or enjoy alfresco dining at the outdoor BBQ area.

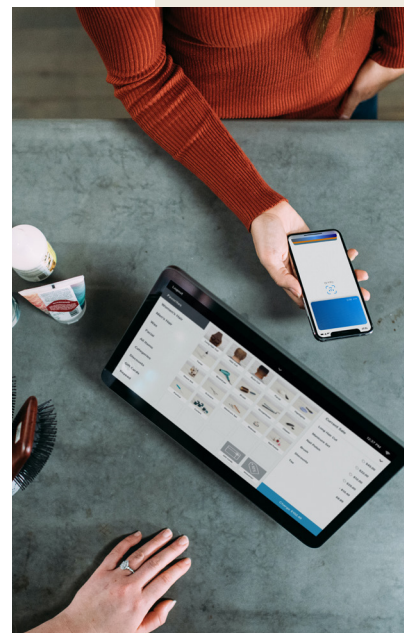


Time Out



PG ONE at Al Furjan has everything at your convenience, whether you're grabbing groceries for your next cooking adventure or chilling with pals over coffee, we've got you covered. We've totally got your lifestyle in mind with every little detail carefully planned out.

Plus, there's no shortage of lush green spaces and community parks that practically invite you to embrace nature.



All images are for illustration purpose only.



Payment Terms

40/60

40% During Construction
60% On Completion

Anticipated Completion Date
1st November, 2025

Payment Terms – During Construction

10%

1st Payment
Now+4% DLD

10%

2nd Payment
1st Apr, 2024

10%

3rd Payment
1st Sept, 2024

10%

4th Payment
1st Feb, 2025



Floorplans & Specifications

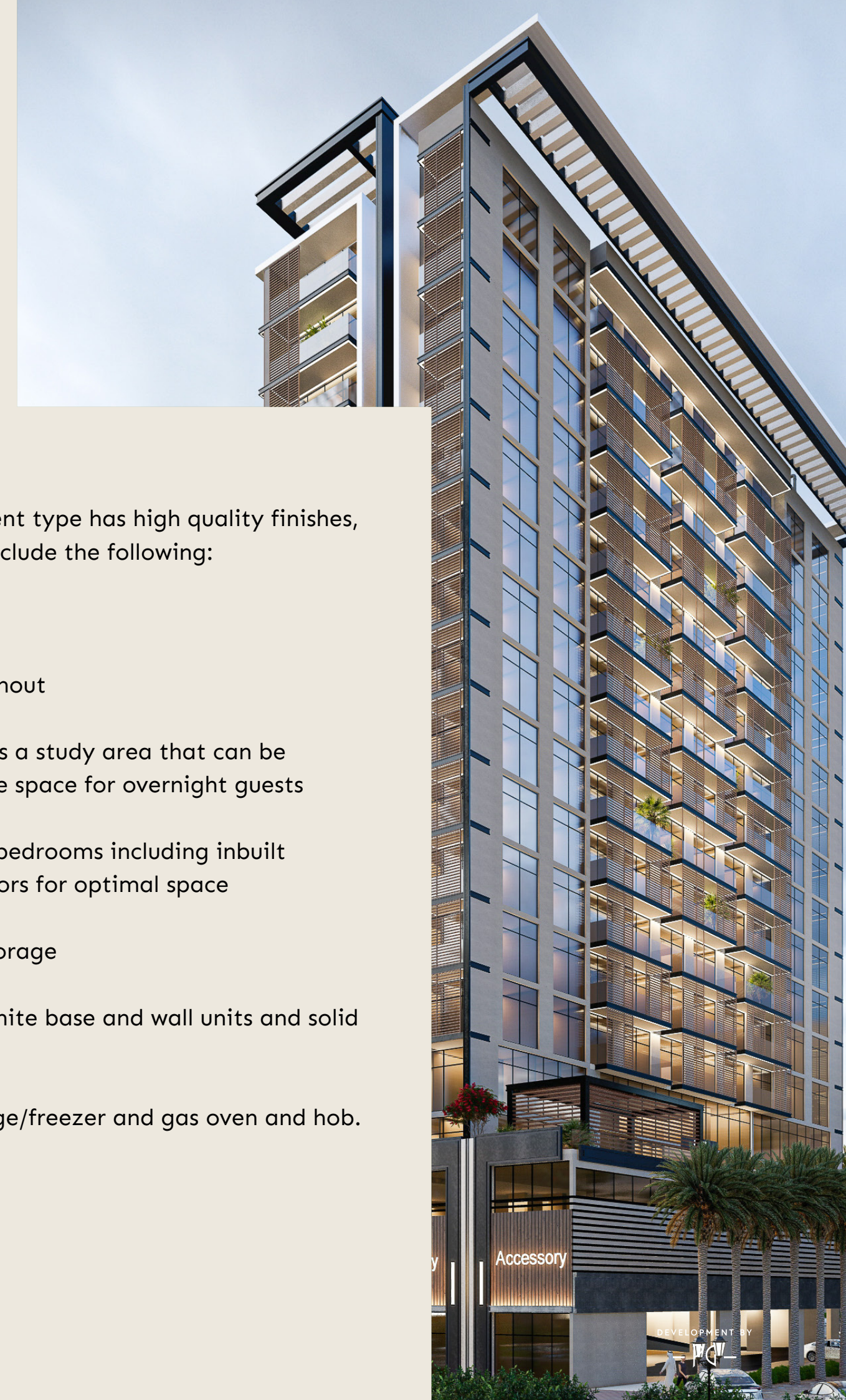
At PG ONE at Al Furjan, we have paid meticulous attention to detail in designing your new home, ensuring it meets the highest standards. You can have peace of mind knowing that your new residence is not only comfortable and liveable but also a solid investment. We've taken care to create a space that provides both a cozy living environment and long-term value.

Apartment types

- > 3-Bedroom duplex apartments
with private elevator, pool and garden
- > 2 Bedroom
- > 1 Bedroom
- > Studio

Every part of each apartment type has high quality finishes, fittings and features that include the following:

- > Neutral elegant palette
- > Ceramic floor tiles throughout
- > Apartment type A includes a study area that can be transformed into a private space for overnight guests
- > Integrated storage in all bedrooms including inbuilt wardrobes with sliding doors for optimal space
- > Bathrooms with inbuilt storage
- > Kitchen with handleless white base and wall units and solid counter top
- > Inbuilt washer/dryer, fridge/freezer and gas oven and hob.



Apartment (3BHK) – 101

3 Bedroom Duplex (lower floor)

FLOORPLAN

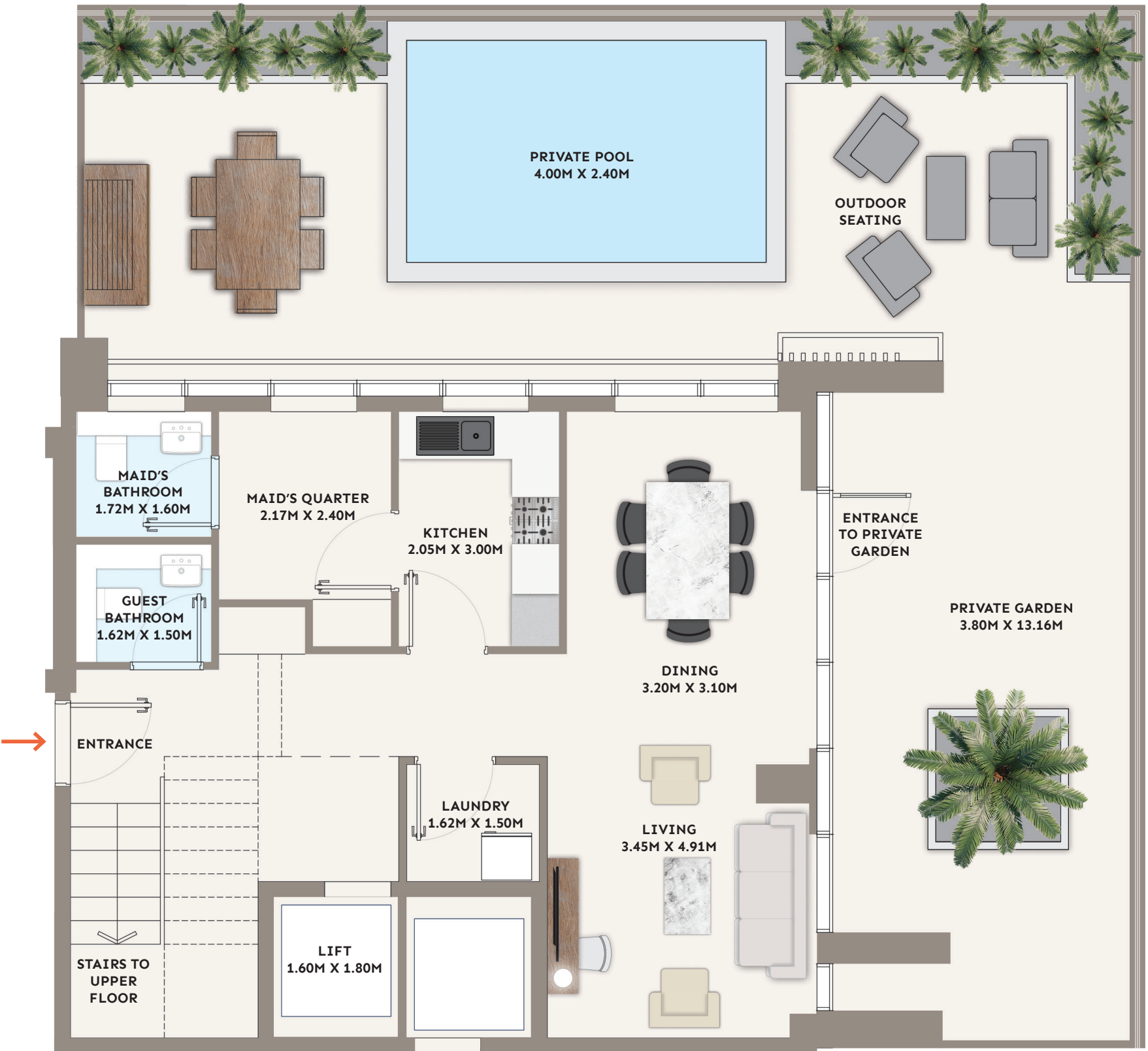
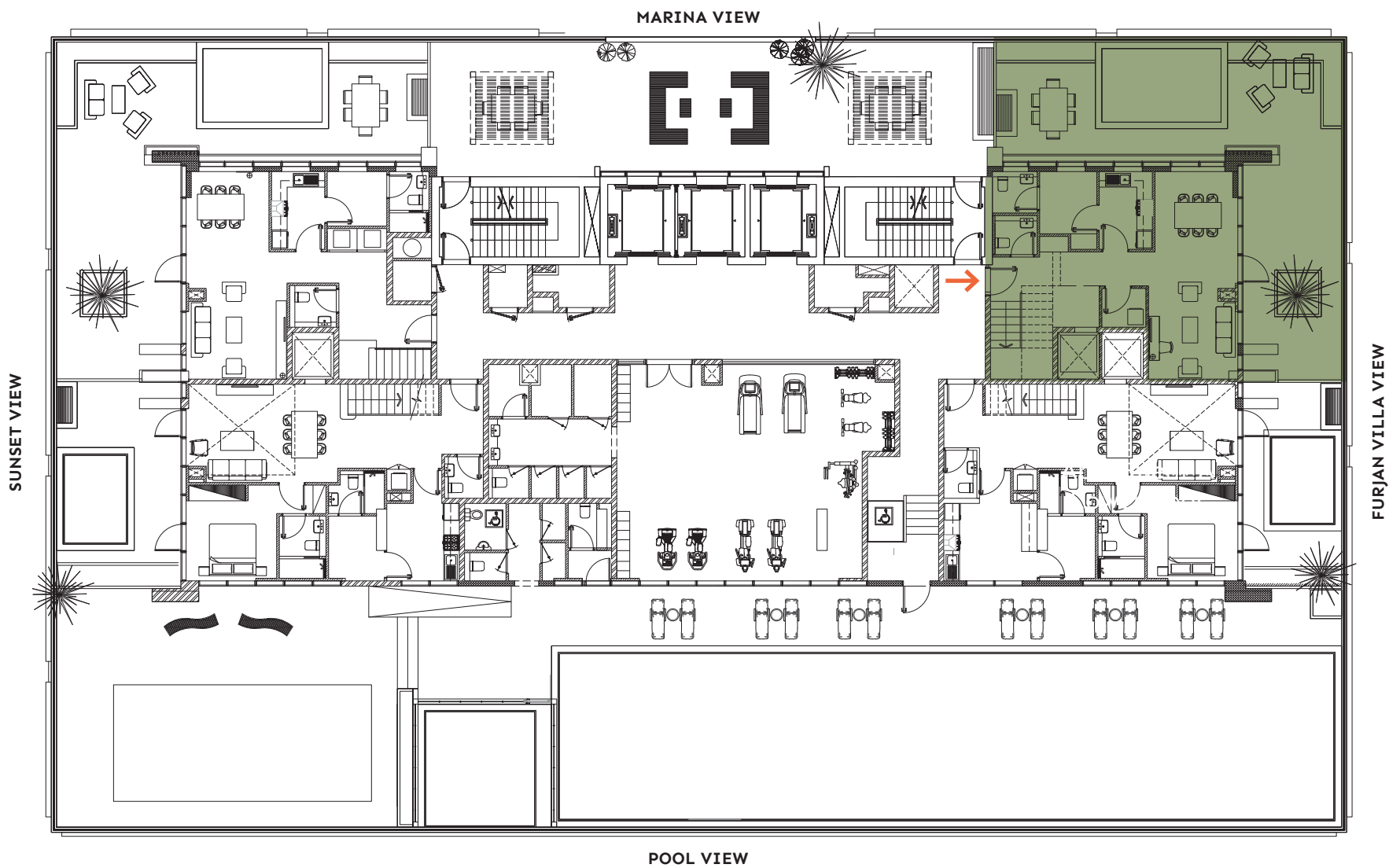
- > Duplex garden apartments
- > Family living over 2 floors
- > Open plan living and dining area
- > 3 x ensuite double bedrooms
- > Separate kitchen & laundry
- > Guest bathroom
- > Maid's quarters with independent bathroom
- > Private garden with pool
- > Private elevator

UNIT AREA	
Suite Area	1758.82 sqft
Private Garden Area	1061.32 sqft
<hr/>	
TOTAL AREA	2820.14 sqft



UPPER FLOOR
(SEE NEXT PAGE)

TYPICAL FLOORPLAN – LOWER FLOOR



DISCLAIMER: Drawings are provided by our consultants. All dimensions, features and amenities are approximate at time of printing. Actual area may vary from stated area. The developer reserves the right to make revisions to the Floorplans and any features, materials and dimensions mentioned without further notice.

DEVELOPMENT BY

- PG -

Apartment (3BHK) – 101

3 Bedroom Duplex (upper floor)

FLOORPLAN

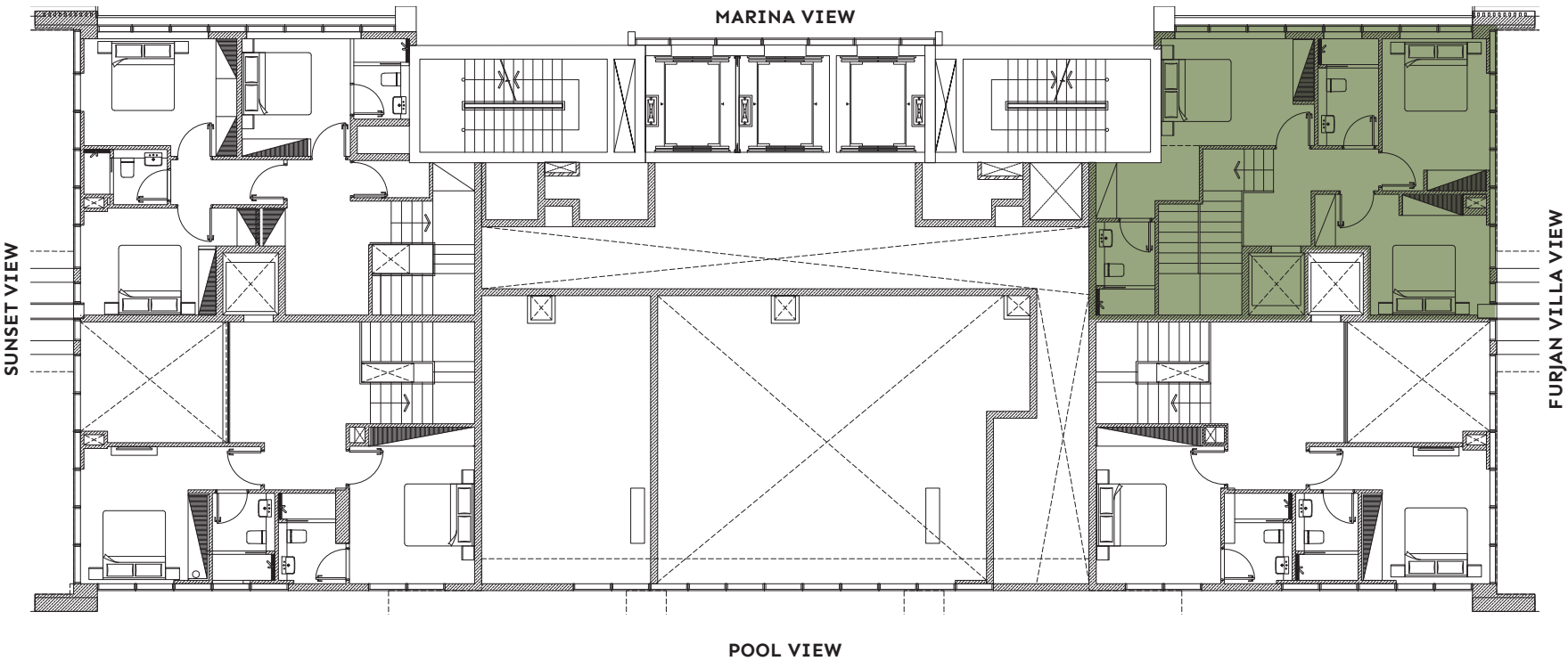
- > Duplex garden apartments
- > Family living over 2 floors
- > Open plan living and dining area
- > 3 x ensuite double bedrooms
- > Separate kitchen & laundry
- > Guest bathroom
- > Maid's quarters with independent bathroom
- > Private garden with pool
- > Private elevator

UNIT AREA	
Suite Area	1758.82 sqft
Private Garden Area	1061.32 sqft
<hr/>	
TOTAL AREA	2820.14 sqft



LOWER FLOORPLAN
(SEE PREVIOUS PAGE)

TYPICAL FLOORPLAN – UPPER FLOOR



DISCLAIMER: Drawings are provided by our consultants. All dimensions, features and amenities are approximate at time of printing. Actual area may vary from stated area. The developer reserves the right to make revisions to the Floorplans and any features, materials and dimensions mentioned without further notice.

Apartment (3BHK) – 102

3 Bedroom Duplex (lower floor)

FLOORPLAN

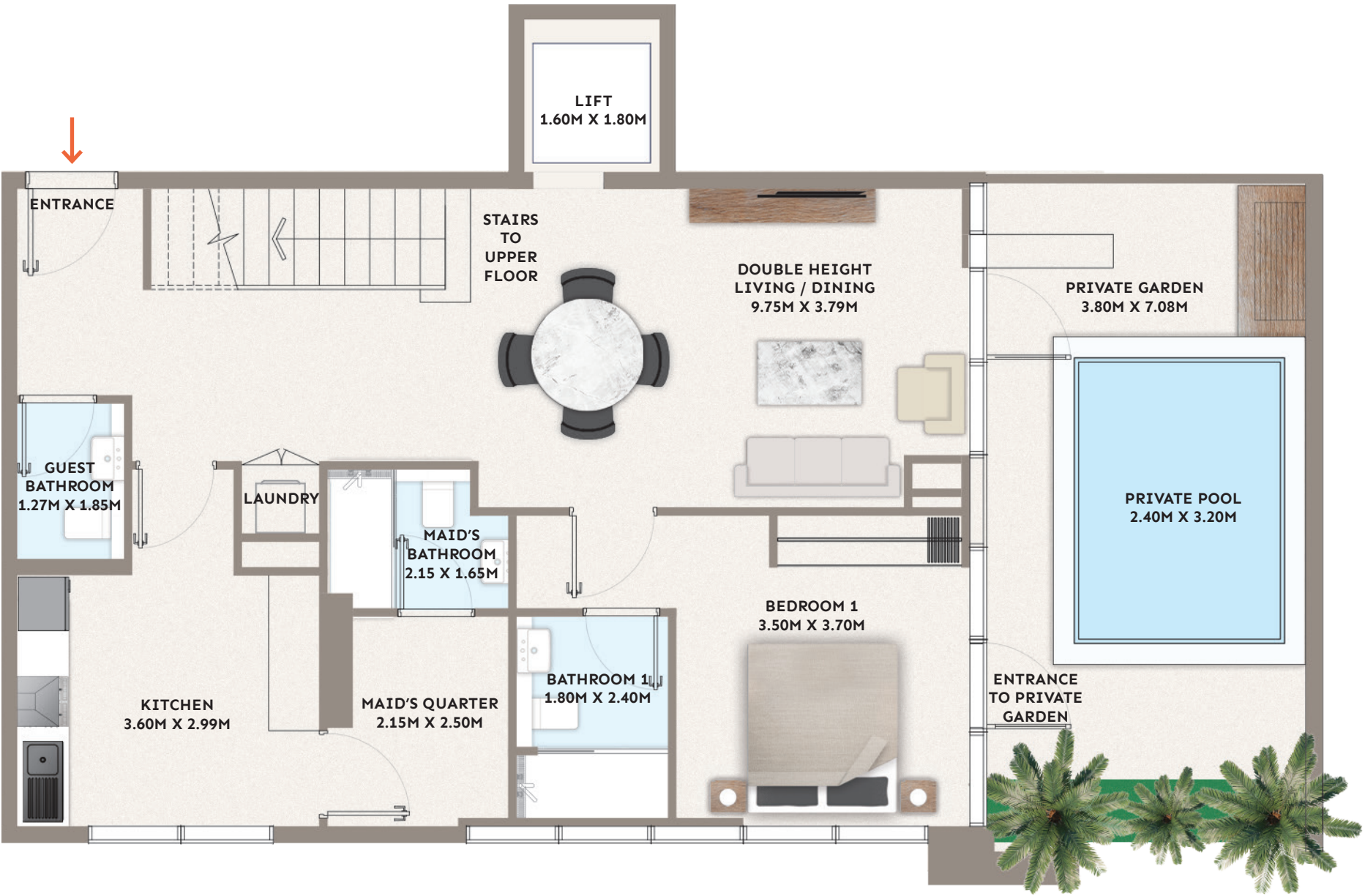
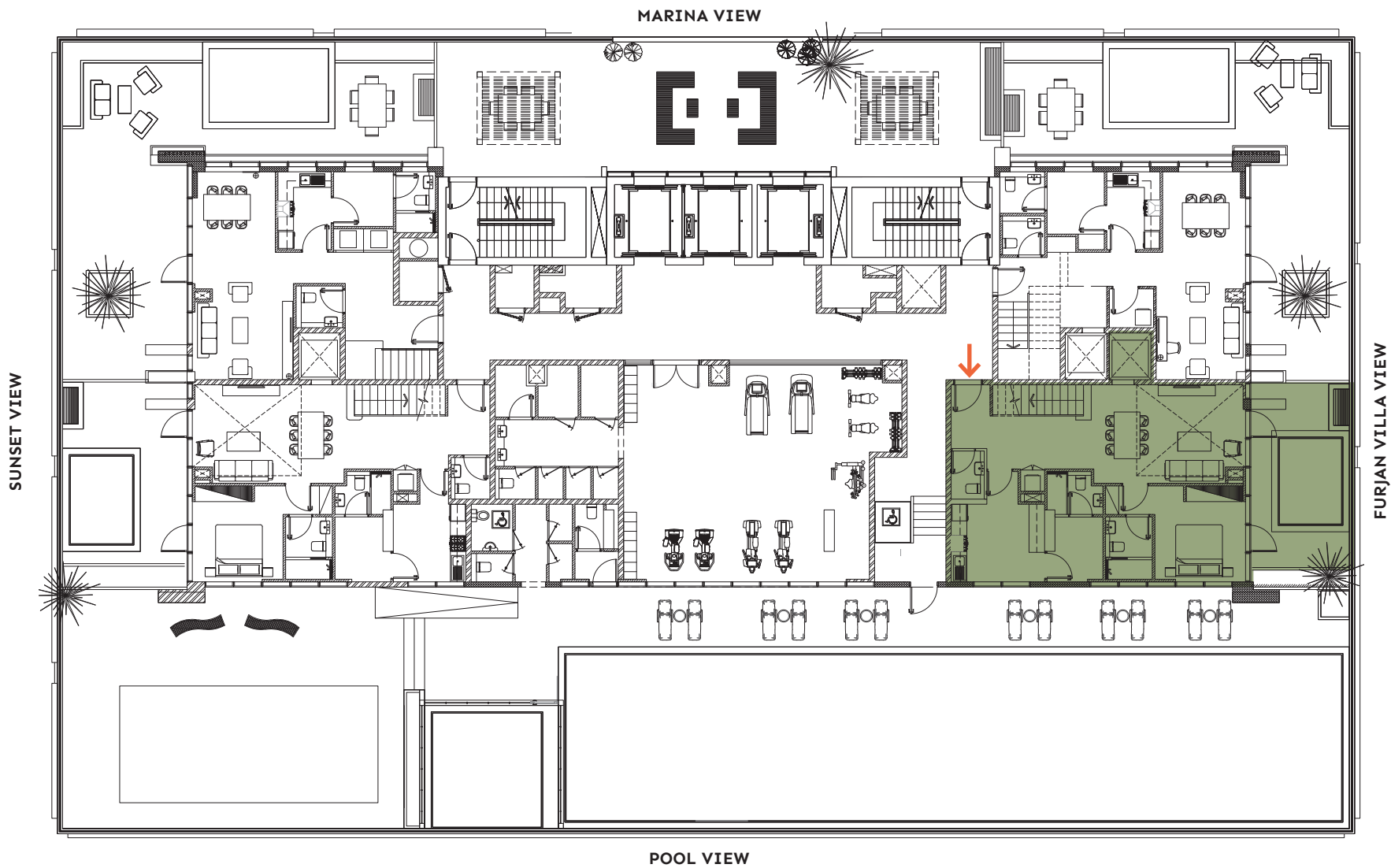
- > Duplex garden apartments
- > Family living over 2 floors
- > Open plan living and dining area
- > 3 x ensuite double bedrooms
- > Separate kitchen & laundry
- > Guest bathroom
- > Maid's quarters with independent bathroom
- > Private garden with pool
- > Private elevator

UNIT AREA	
Suite Area	1854.08 sqft
Private Garden Area	343.91 sqft
<hr/>	
TOTAL AREA	2197.99 sqft



UPPER FLOOR
(SEE NEXT PAGE)

TYPICAL FLOORPLAN – LOWER FLOOR



DISCLAIMER: Drawings are provided by our consultants. All dimensions, features and amenities are approximate at time of printing. Actual area may vary from stated area. The developer reserves the right to make revisions to the Floorplans and any features, materials and dimensions mentioned without further notice.

Apartment (3BHK) – 102

3 Bedroom Duplex (upper floor)

FLOORPLAN

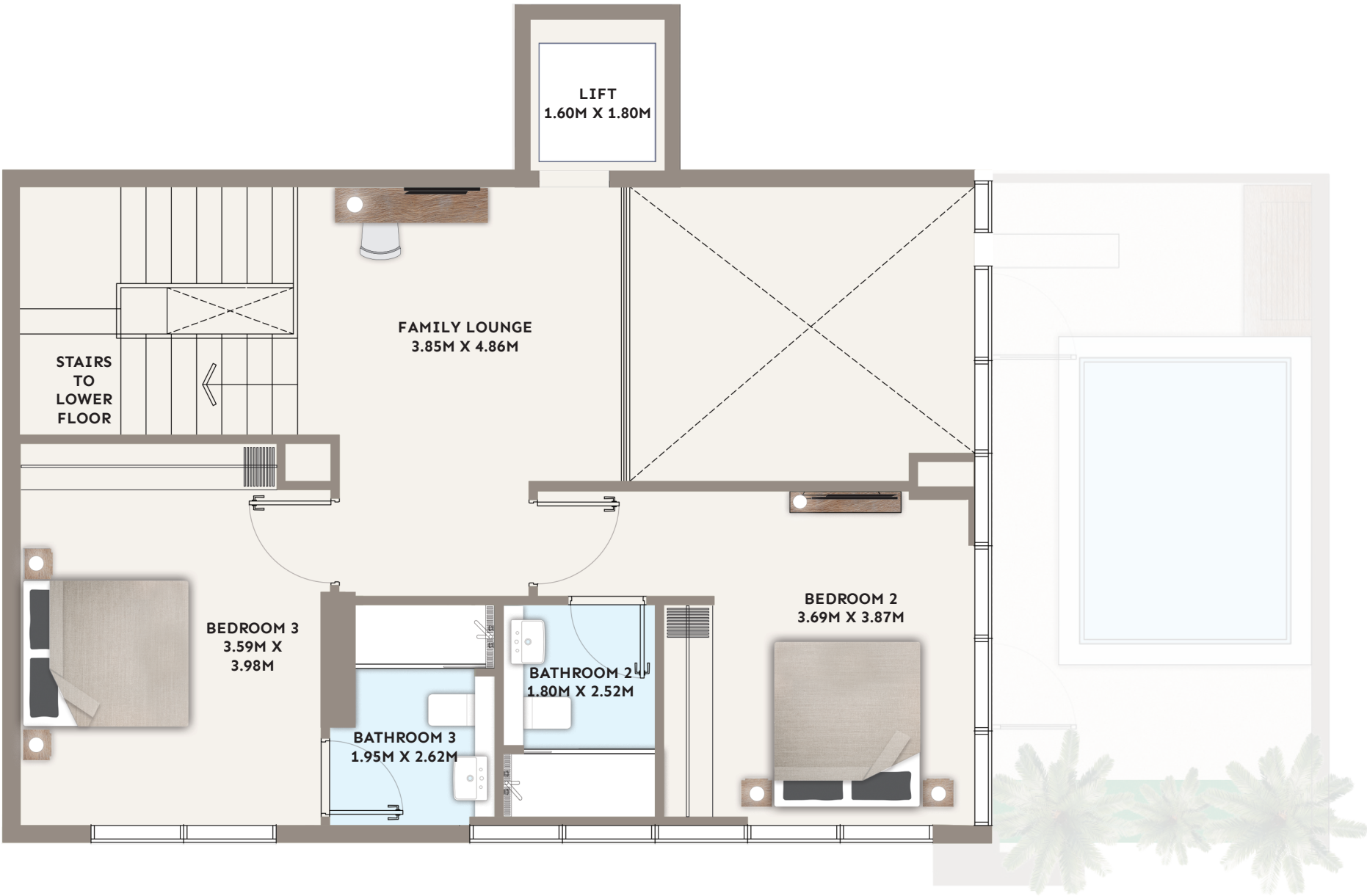
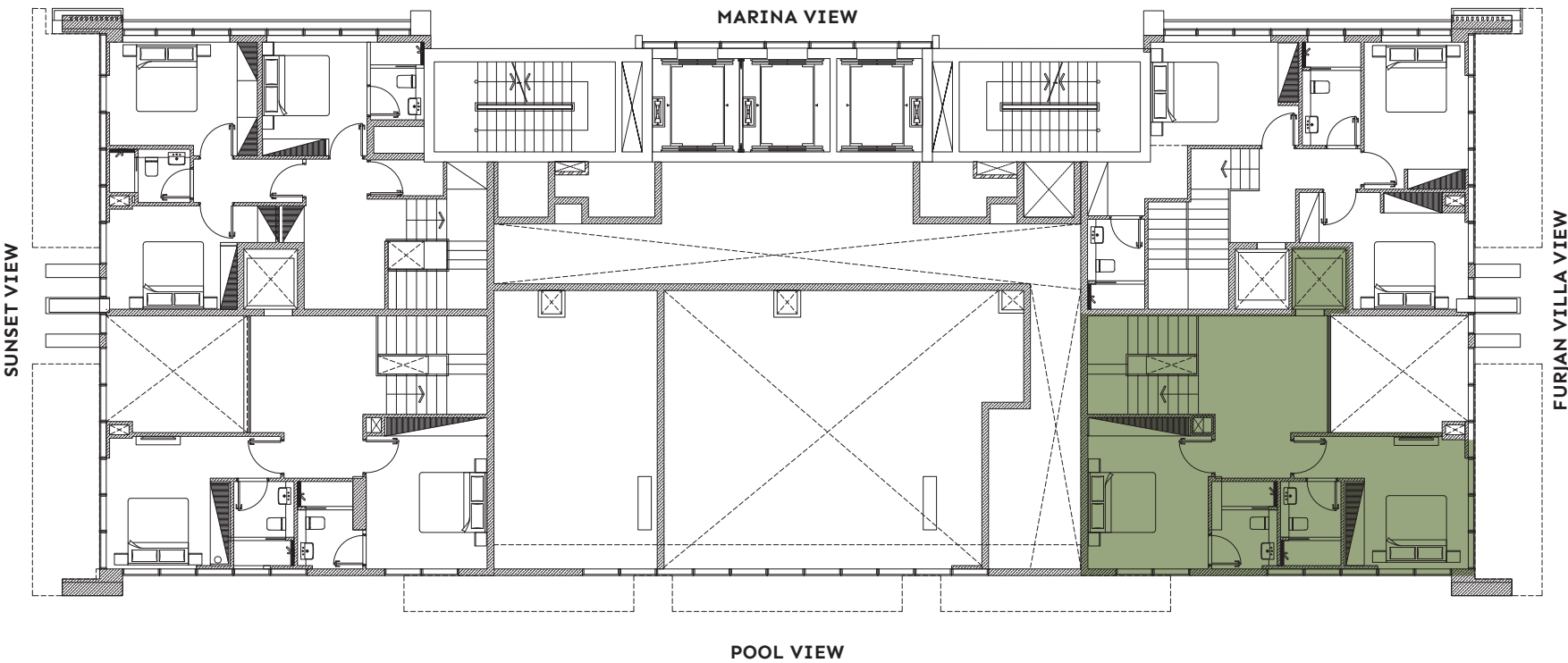
- > Duplex garden apartments
- > Family living over 2 floors
- > Open plan living and dining area
- > 3 x ensuite double bedrooms
- > Separate kitchen
- > Guest bathroom
- > Maid's quarters with independent bathroom
- > Private garden with pool
- > Private elevator

UNIT AREA	
Suite Area	1854.08 sqft
Private Garden Area	343.91 sqft
<hr/>	
TOTAL AREA	2197.99 sqft



LOWER FLOOR
(SEE PREVIOUS PAGE)

TYPICAL FLOORPLAN – UPPER FLOOR



DISCLAIMER: Drawings are provided by our consultants. All dimensions, features and amenities are approximate at time of printing. Actual area may vary from stated area. The developer reserves the right to make revisions to the Floorplans and any features, materials and dimensions mentioned without further notice.

Apartment (3BHK) – 103

3 Bedroom Duplex (lower floor)

FLOORPLAN

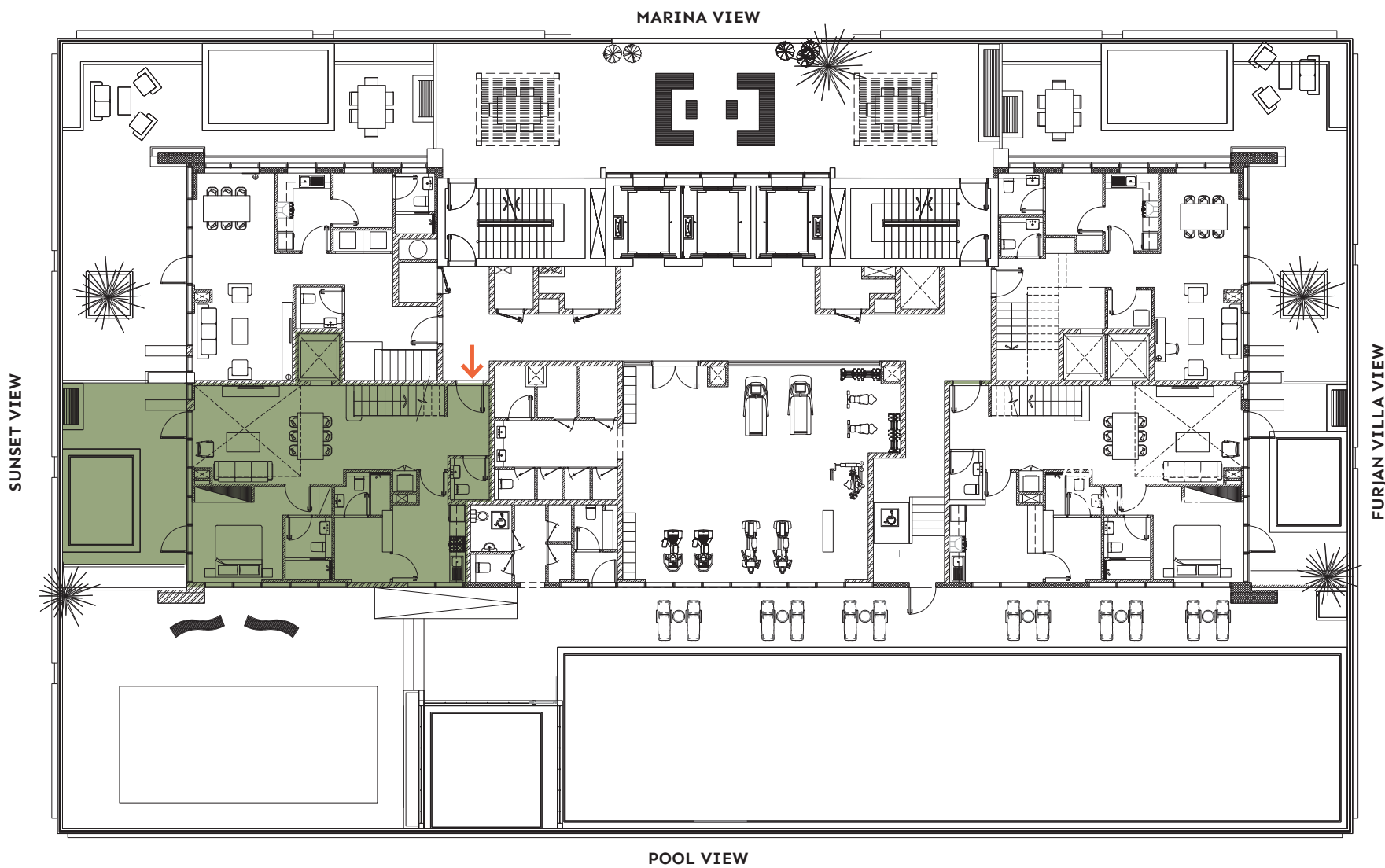
- > Duplex garden apartments
- > Family living over 2 floors
- > Open plan living and dining area
- > 3 x ensuite double bedrooms
- > Separate kitchen & laundry
- > Guest bathroom
- > Maid's quarters with independent bathroom
- > Private garden with pool
- > Private elevator

UNIT AREA	
Suite Area	1831.16 sqft
Private Garden Area	431.20 sqft
<hr/>	
TOTAL AREA	2262.36 sqft



UPPER FLOOR
(SEE NEXT PAGE)

TYPICAL FLOORPLAN – LOWER FLOOR



DISCLAIMER: Drawings are provided by our consultants. All dimensions, features and amenities are approximate at time of printing. Actual area may vary from stated area. The developer reserves the right to make revisions to the Floorplans and any features, materials and dimensions mentioned without further notice.

DEVELOPMENT BY

- PG -

Apartment (3BHK) – 103

3 Bedroom Duplex (upper floor)

FLOORPLAN

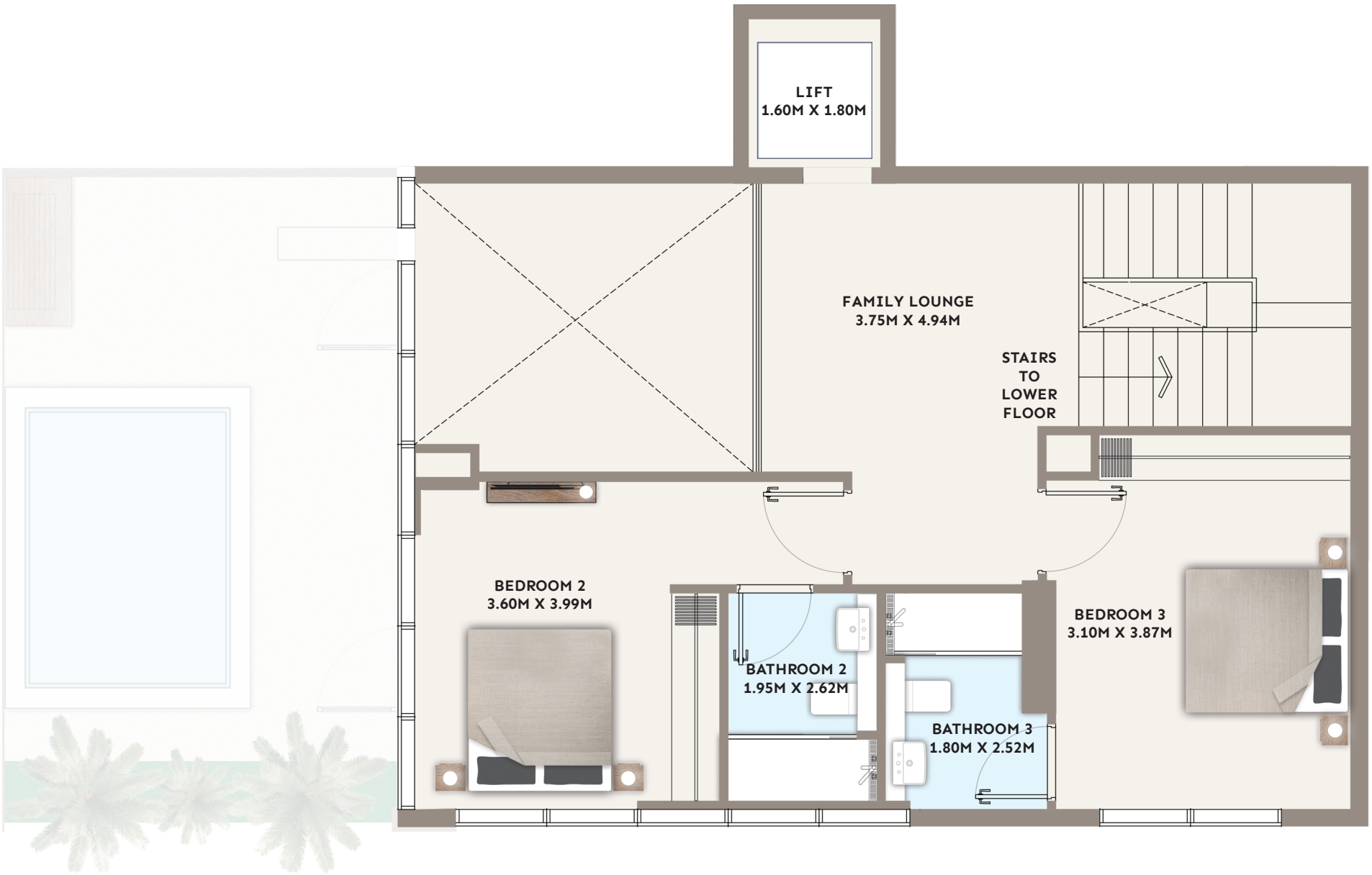
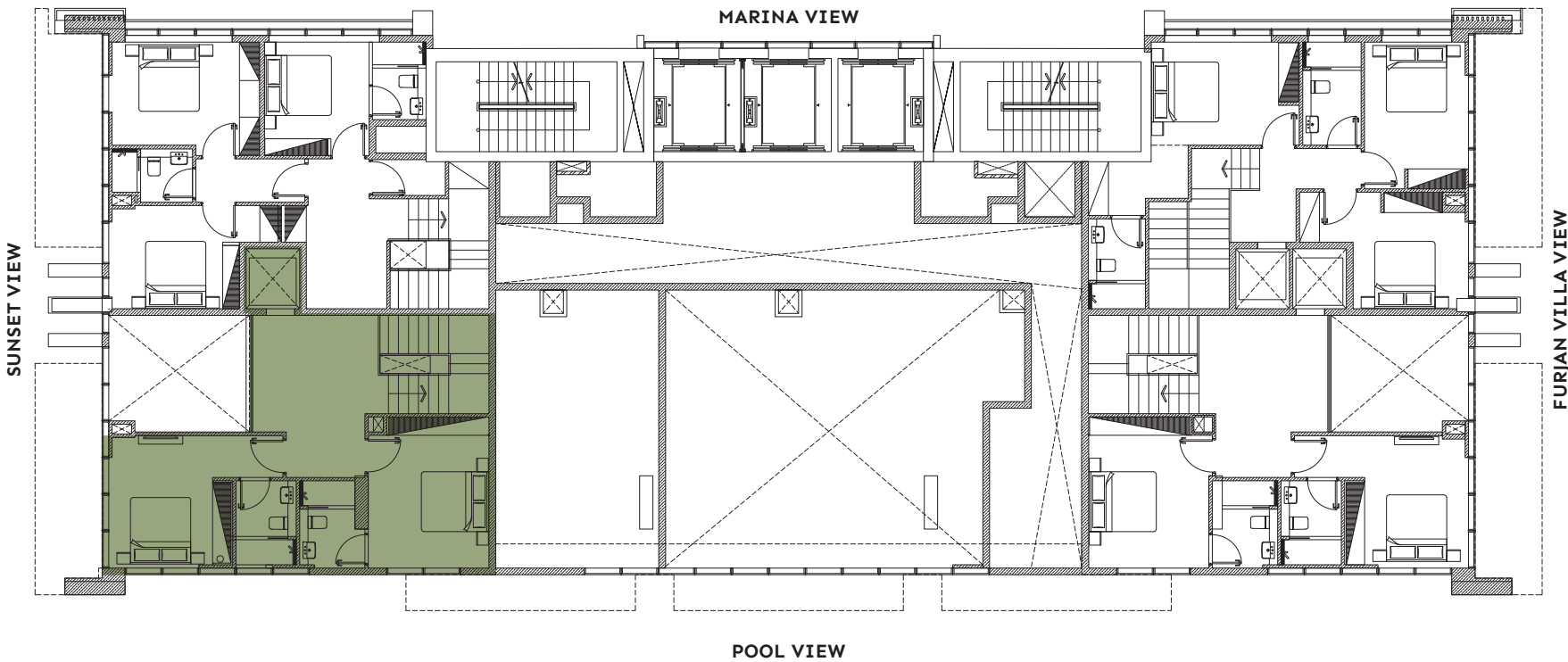
- > Duplex garden apartments
- > Family living over 2 floors
- > Open plan living and dining area
- > 3 x ensuite double bedrooms
- > Separate kitchen & laundry
- > Guest bathroom
- > Maid's quarters with independent bathroom
- > Private garden with pool
- > Private elevator

UNIT AREA	
Suite Area	1831.16 sqft
Private Garden Area	431.20 sqft
<hr/>	
TOTAL AREA	2262.36 sqft



LOWER FLOOR
(SEE PREVIOUS PAGE)

TYPICAL FLOORPLAN – UPPER FLOOR



Apartment (3BHK) – 104

3 Bedroom Duplex (lower floor)

FLOORPLAN

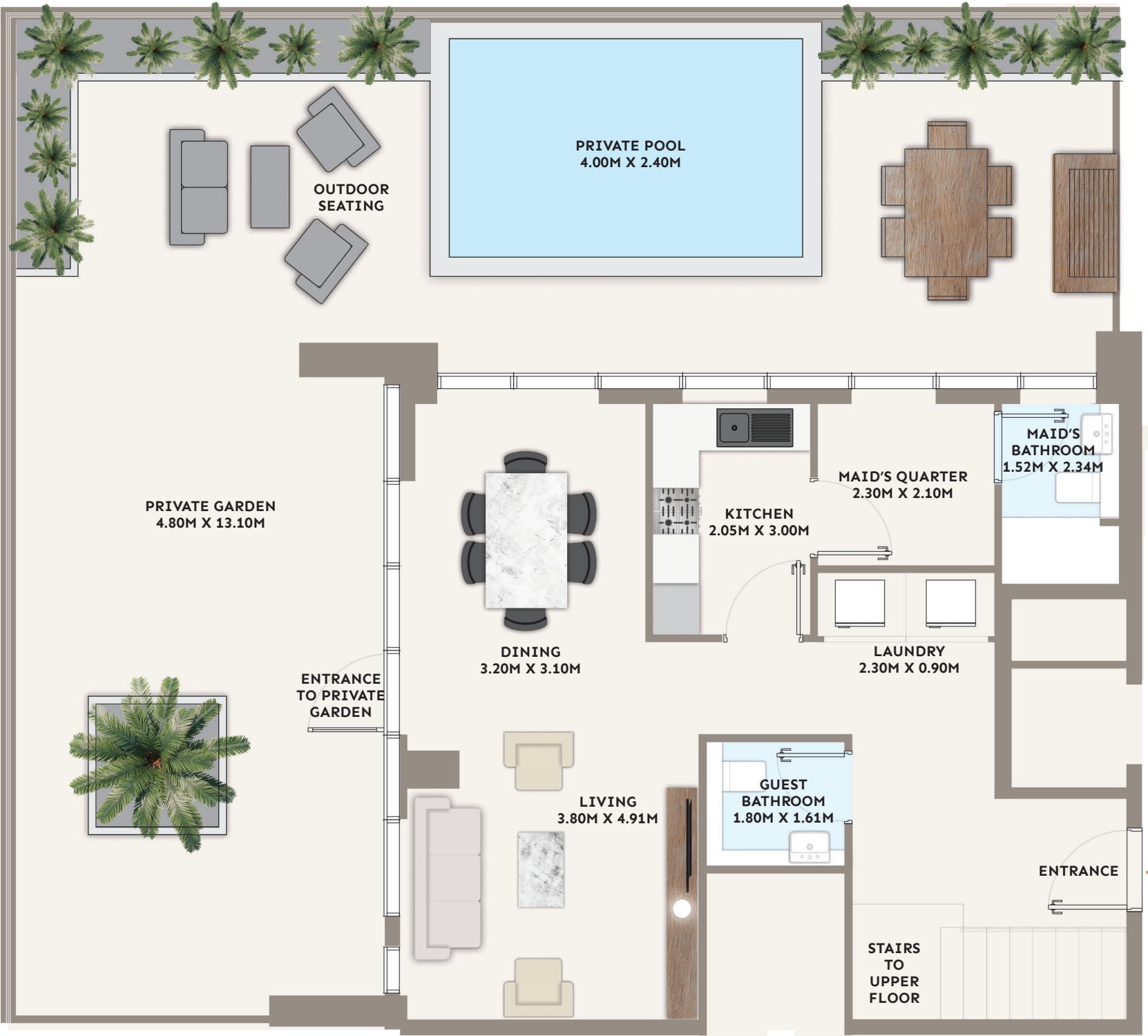
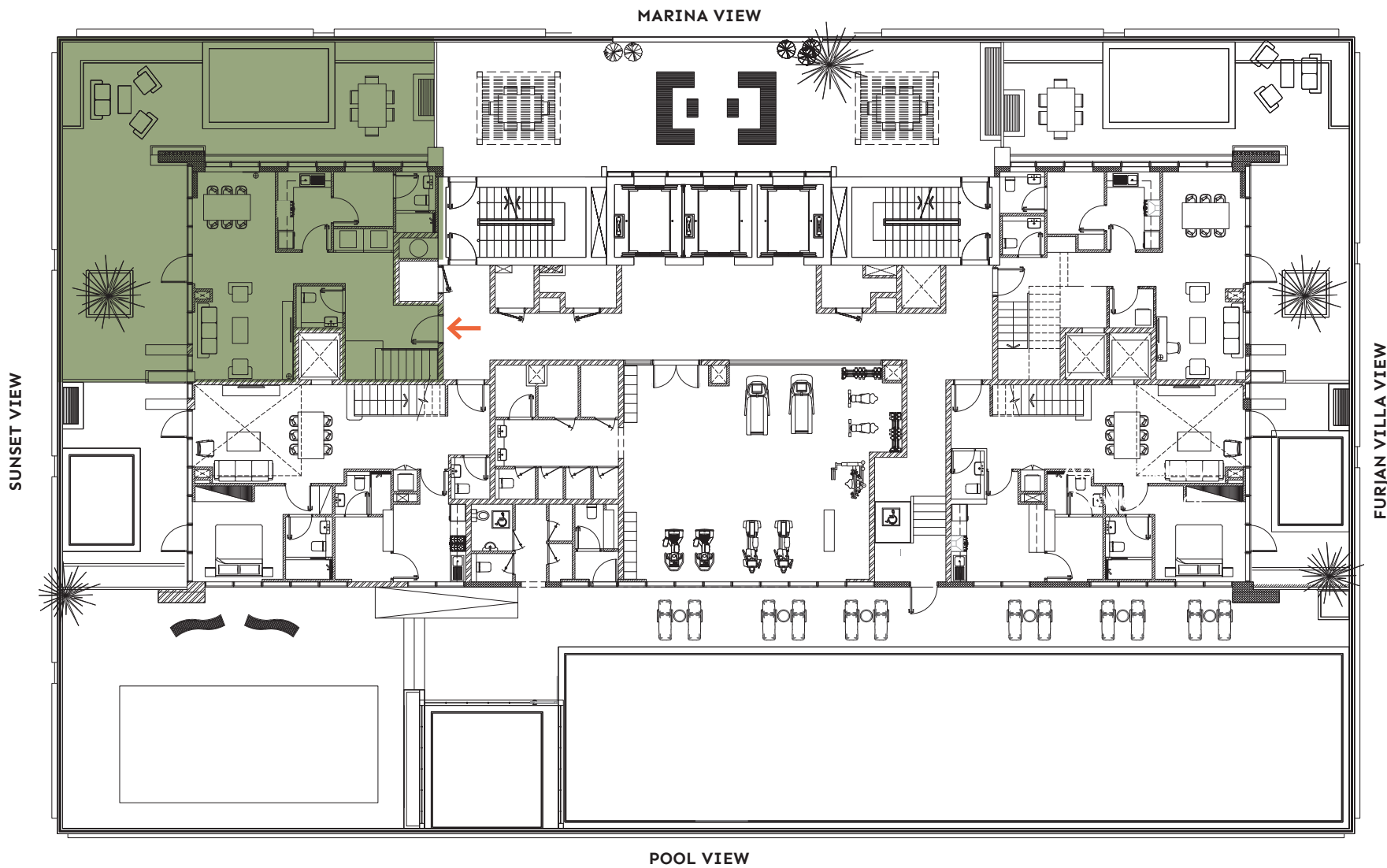
- > Duplex garden apartments
- > Family living over 2 floors
- > Open plan living and dining area
- > 3 x ensuite double bedrooms
- > Separate kitchen & laundry
- > Guest bathroom
- > Maid's quarters with independent bathroom
- > Private garden with pool

UNIT AREA	
Suite Area	1685.20 sqft
Private Garden Area	1201.79 sqft
<hr/>	
TOTAL AREA	2886.99 sqft



UPPER FLOOR
(SEE NEXT PAGE)

TYPICAL FLOORPLAN – LOWER FLOOR



DISCLAIMER: Drawings are provided by our consultants. All dimensions, features and amenities are approximate at time of printing. Actual area may vary from stated area. The developer reserves the right to make revisions to the Floorplans and any features, materials and dimensions mentioned without further notice.

Apartment (3BHK) – 104

3 Bedroom Duplex (upper floor)

FLOORPLAN

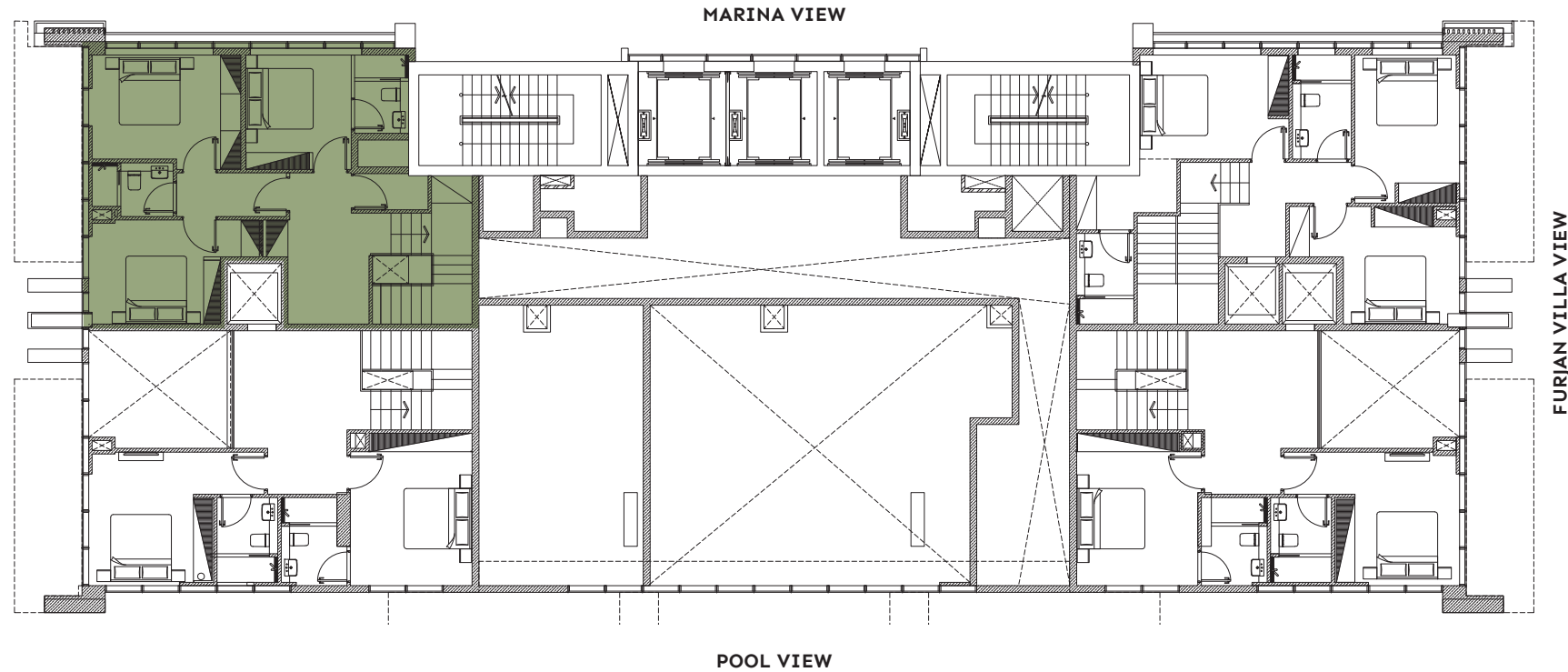
- > Duplex garden apartments
- > Family living over 2 floors
- > Open plan living and dining area
- > 3 x ensuite double bedrooms
- > Separate kitchen & laundry
- > Guest bathroom
- > Maid's quarters with independent bathroom
- > Private garden with pool

UNIT AREA	
Suite Area	1685.20 sqft
Private Garden Area	1201.79 sqft
<hr/>	
TOTAL AREA	2886.99 sqft



LOWER FLOORPLAN
(SEE PREVIOUS PAGE)

TYPICAL FLOORPLAN – UPPER FLOOR



Apartment H

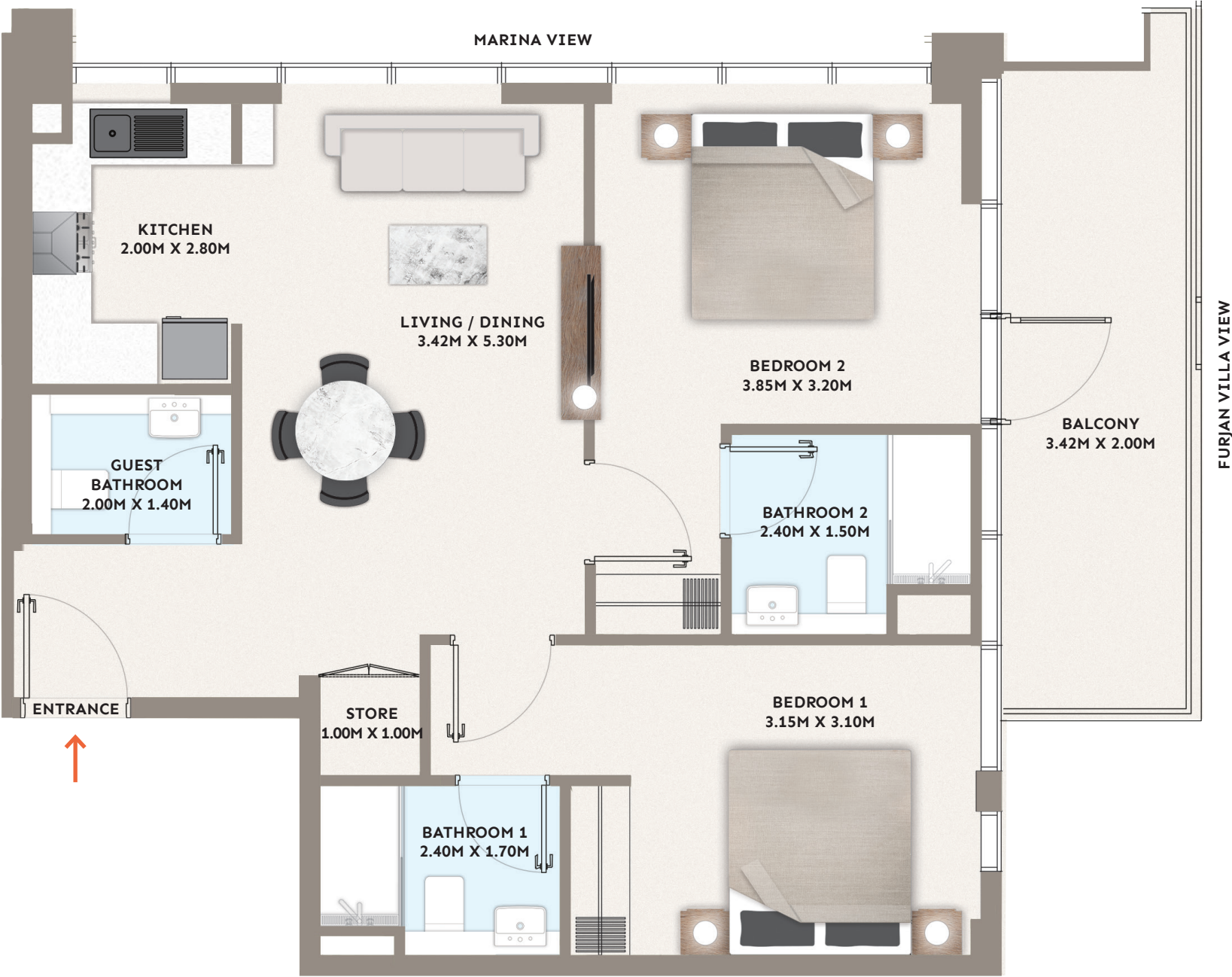
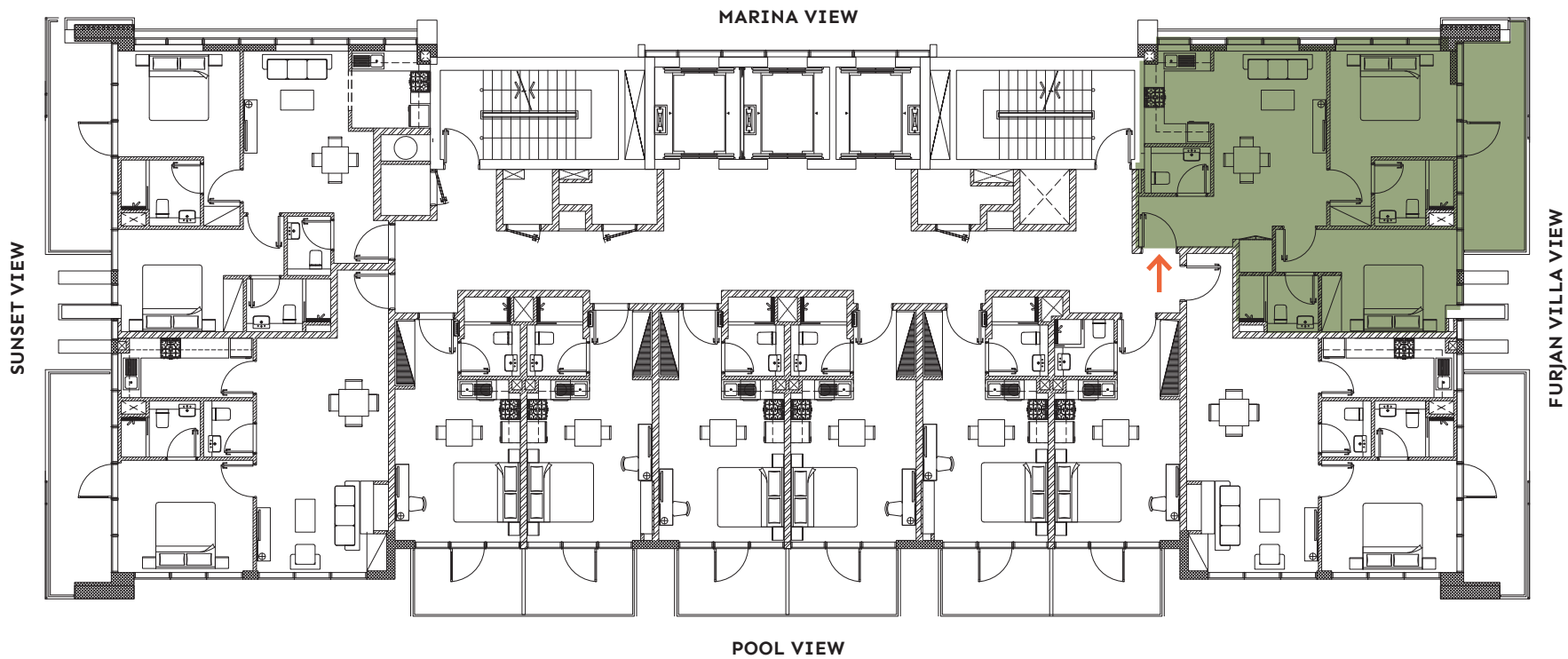
2 Bedroom (2 to 14 Floor)

FLOORPLAN

- > Marina & Furjan Villa view
- > Open plan living and dining area
- > Master bedroom with ensuite
- > Second bedroom with ensuite
- > Kitchen
- > Guest bathroom
- > Spacious balcony

UNIT AREA	
Suite Area	837.65 sqft
Balcony Area	148.22 sqft
<hr/>	
TOTAL AREA	985.87 sqft

TYPICAL FLOORPLAN



DISCLAIMER: Drawings are provided by our consultants. All dimensions, features and amenities are approximate at time of printing. Actual area may vary from stated area. The developer reserves the right to make revisions to the Floorplans and any features, materials and dimensions mentioned without further notice.

Apartment I

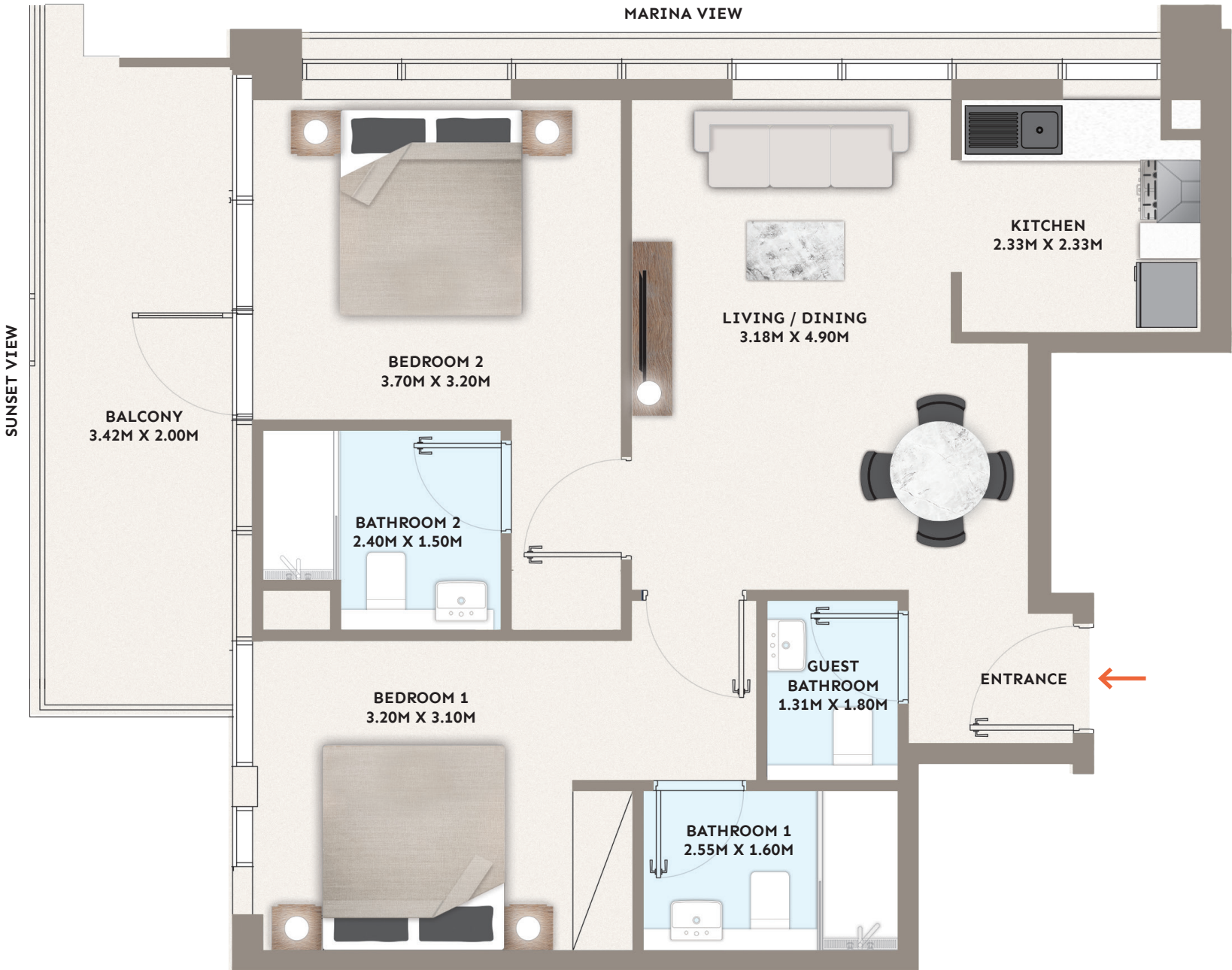
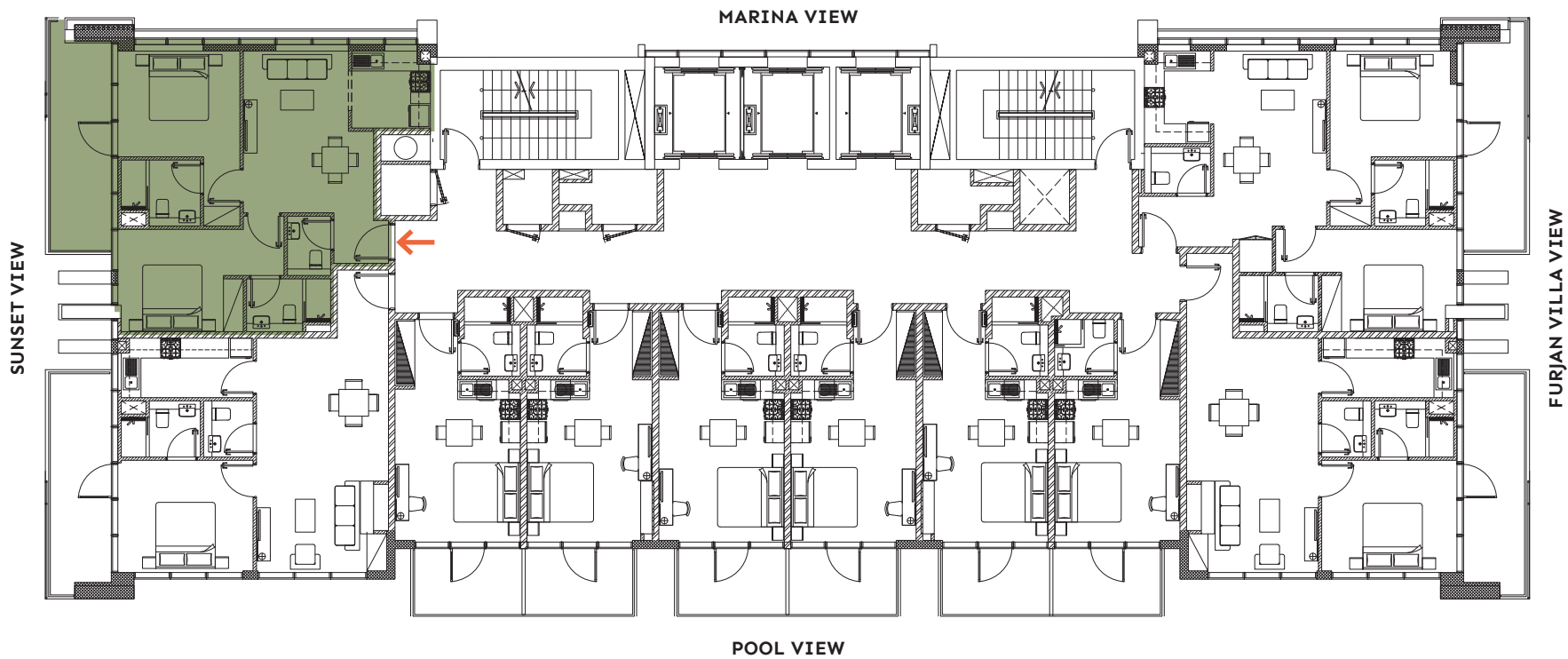
2 Bedroom (2 to 14 Floor)

FLOORPLAN

- > Marina & sunset view
- > Open plan living and dining area
- > Master bedroom with ensuite
- > Second bedroom with ensuite
- > Kitchen
- > Guest bathroom
- > Spacious balcony

UNIT AREA	
Suite Area	774.36 sqft
Balcony Area	148.22 sqft
<hr/>	
TOTAL AREA	922.57 sqft

TYPICAL FLOORPLAN



DISCLAIMER: Drawings are provided by our consultants. All dimensions, features and amenities are approximate at time of printing. Actual area may vary from stated area. The developer reserves the right to make revisions to the Floorplans and any features, materials and dimensions mentioned without further notice.

Apartment D

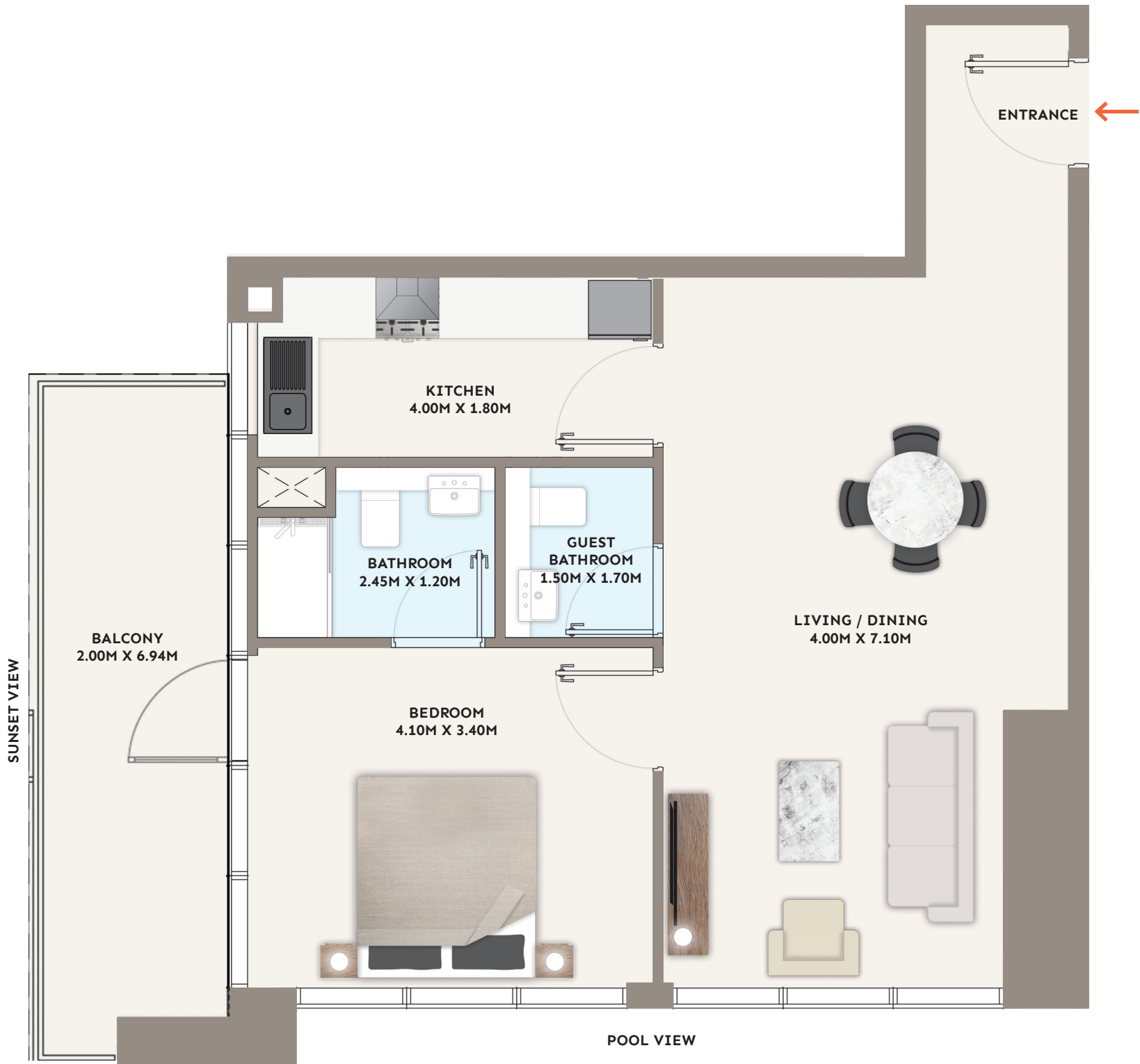
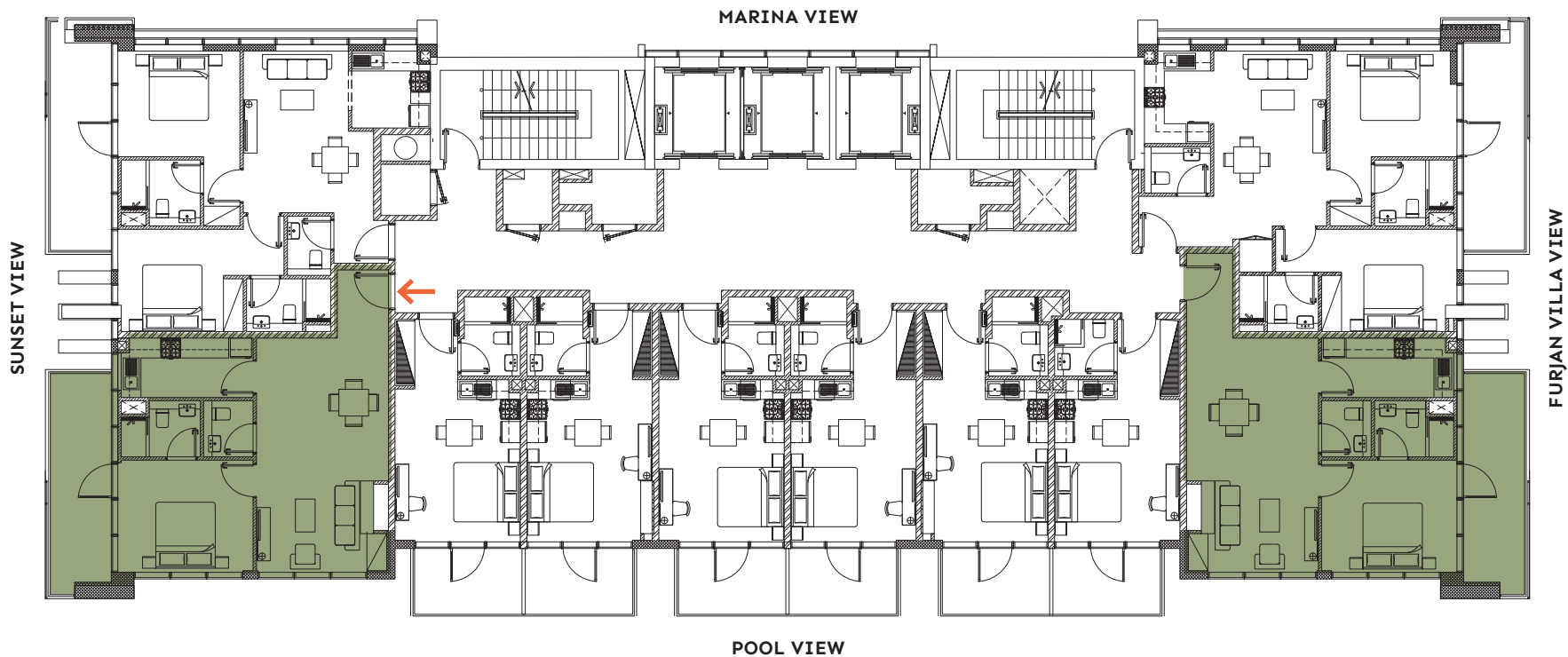
1 Bedroom (2 to 14 Floor)

FLOORPLAN

- > Sunset, pool & Furjan villa view
- > Open plan living and dining area
- > Master bedroom with ensuite
- > Separate kitchen
- > Guest bathroom
- > Spacious balcony

UNIT AREA	
Suite Area	693.20 sqft
Balcony Area	141.65 sqft
<hr/>	
TOTAL AREA	834.85 sqft

TYPICAL FLOORPLAN



DISCLAIMER: Drawings are provided by our consultants. All dimensions, features and amenities are approximate at time of printing. Actual area may vary from stated area. The developer reserves the right to make revisions to the Floorplans and any features, materials and dimensions mentioned without further notice.

Apartment E

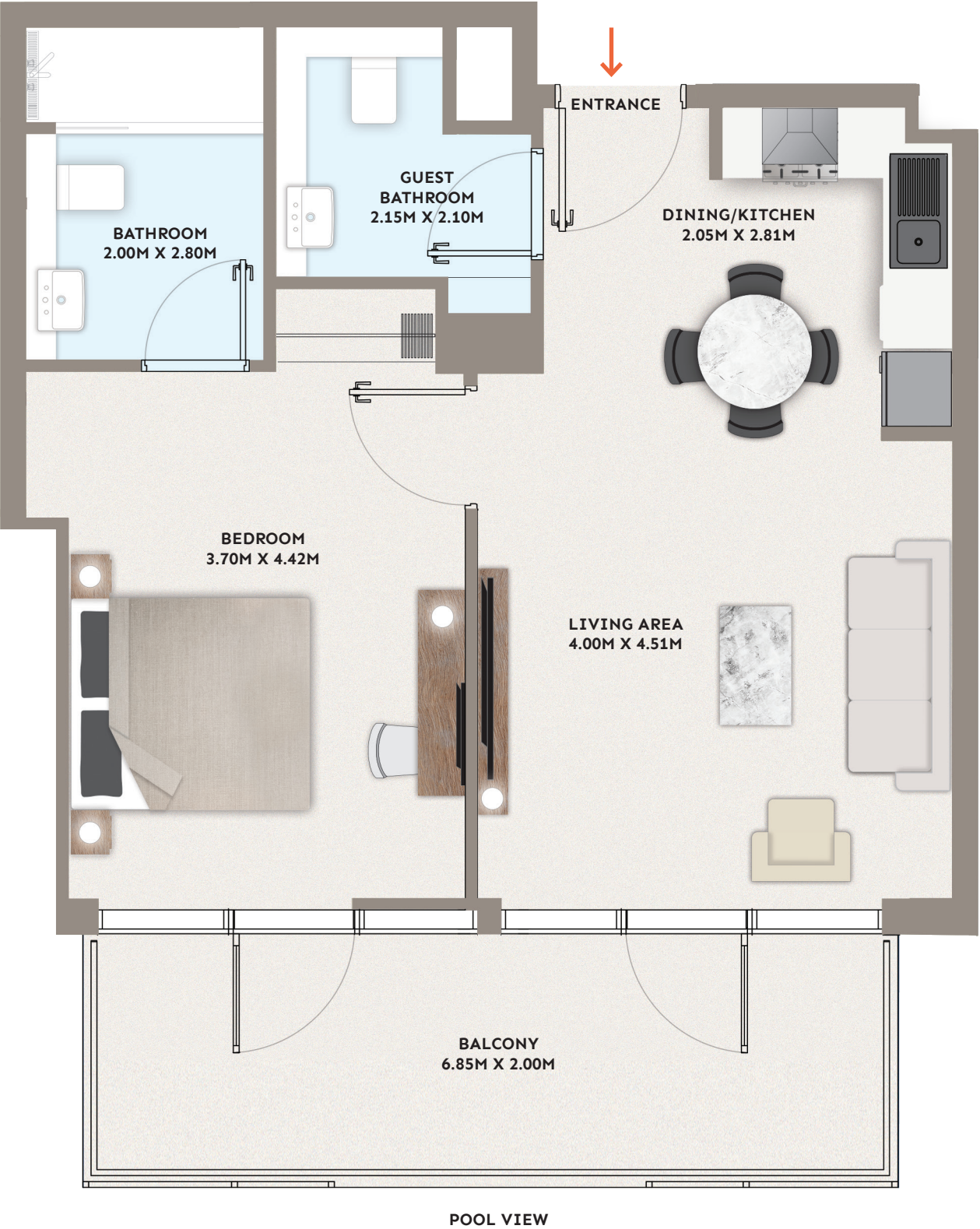
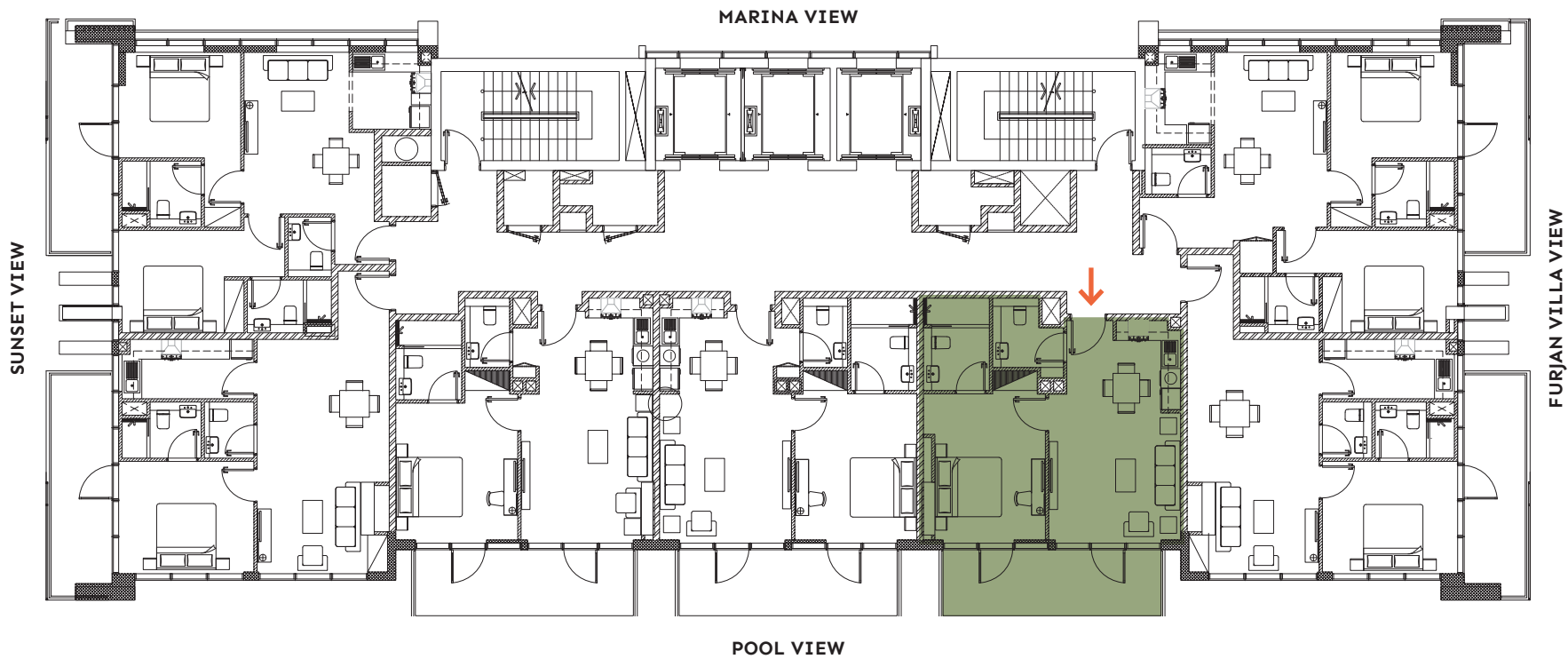
1 Bedroom (8th to 14th Floor)

FLOORPLAN

- > Pool view
- > Open plan living and dining area
- > Master bedroom with ensuite
- > Kitchen
- > Guest bathroom
- > Spacious balcony

UNIT AREA	
Suite Area	618.17 sqft
Balcony Area	146.82 sqft
<hr/>	
TOTAL AREA	764.99 sqft

TYPICAL FLOORPLAN



DISCLAIMER: Drawings are provided by our consultants. All dimensions, features and amenities are approximate at time of printing. Actual area may vary from stated area. The developer reserves the right to make revisions to the Floorplans and any features, materials and dimensions mentioned without further notice.

Apartment F

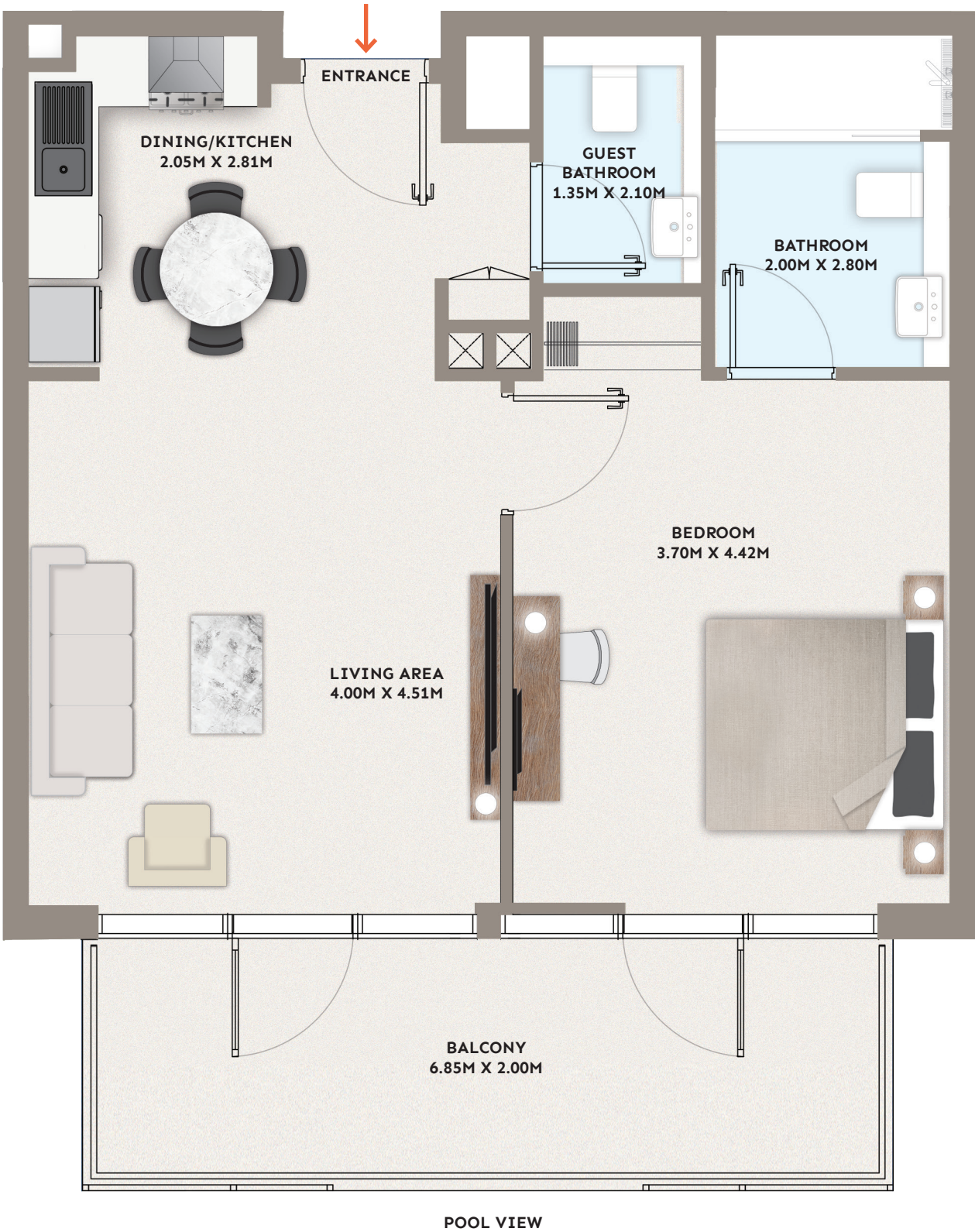
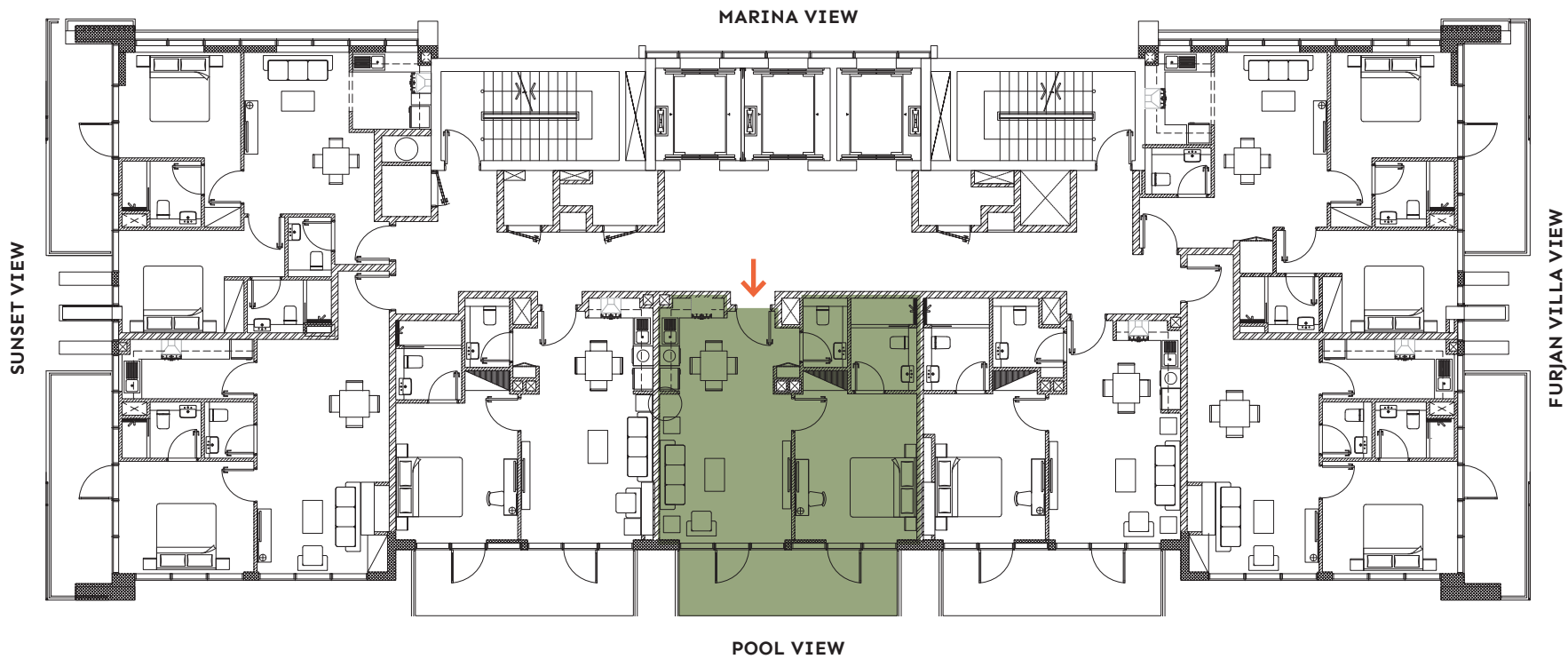
1 Bedroom (8th to 14th Floor)

FLOORPLAN

- > Pool view
- > Open plan living and dining area
- > Master bedroom with ensuite
- > Kitchen
- > Guest bathroom
- > Spacious balcony

UNIT AREA	
Suite Area	650.00 sqft
Balcony Area	146.82 sqft
<hr/>	
TOTAL AREA	797.82 sqft

TYPICAL FLOORPLAN



DISCLAIMER: Drawings are provided by our consultants. All dimensions, features and amenities are approximate at time of printing. Actual area may vary from stated area. The developer reserves the right to make revisions to the Floorplans and any features, materials and dimensions mentioned without further notice.

Apartment G

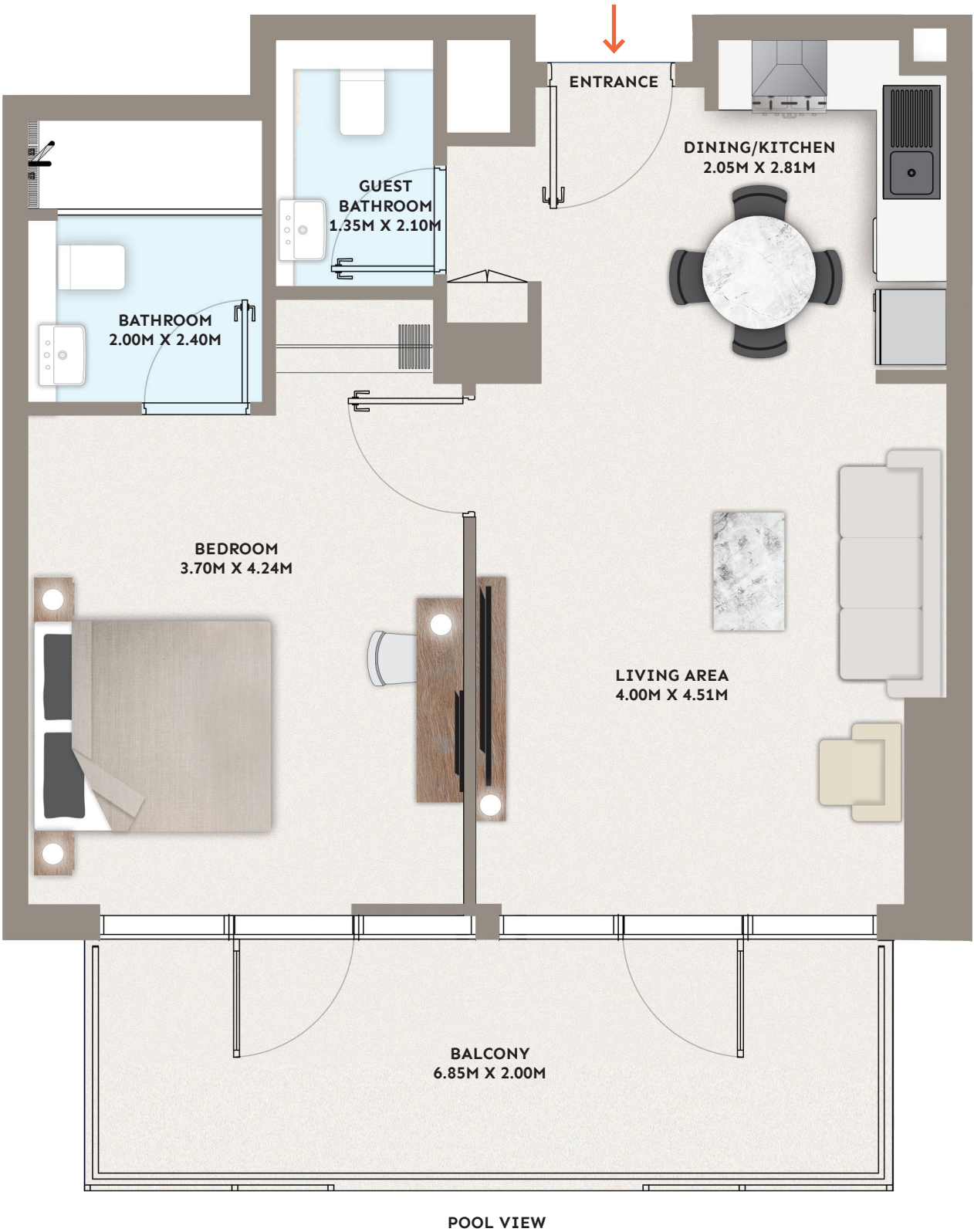
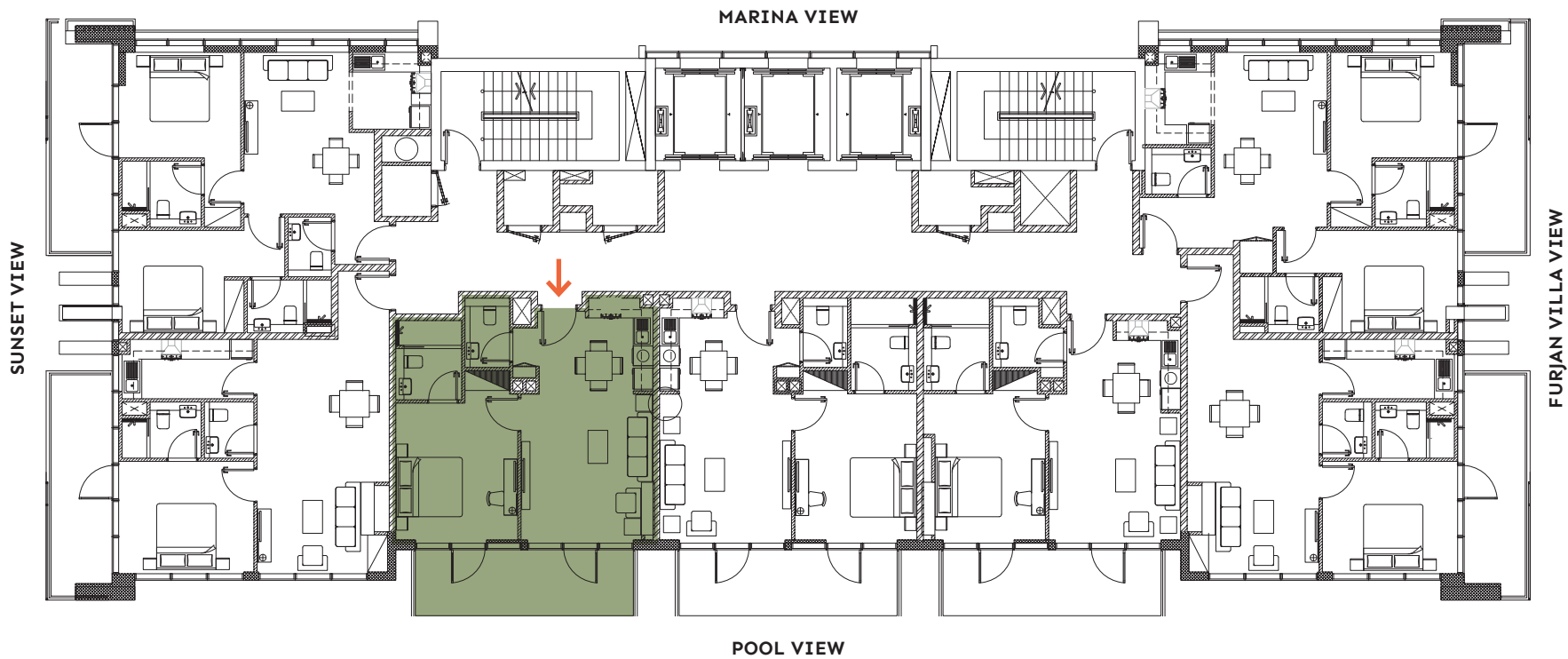
1 Bedroom (8th to 14th Floor)

FLOORPLAN

- > Pool view
- > Open plan living and dining area
- > Master bedroom with ensuite
- > Kitchen
- > Guest bathroom
- > Spacious balcony

UNIT AREA	
Suite Area	622.80 sqft
Balcony Area	146.82 sqft
<hr/>	
TOTAL AREA	769.62 sqft

TYPICAL FLOORPLAN



DISCLAIMER: Drawings are provided by our consultants. All dimensions, features and amenities are approximate at time of printing. Actual area may vary from stated area. The developer reserves the right to make revisions to the Floorplans and any features, materials and dimensions mentioned without further notice.

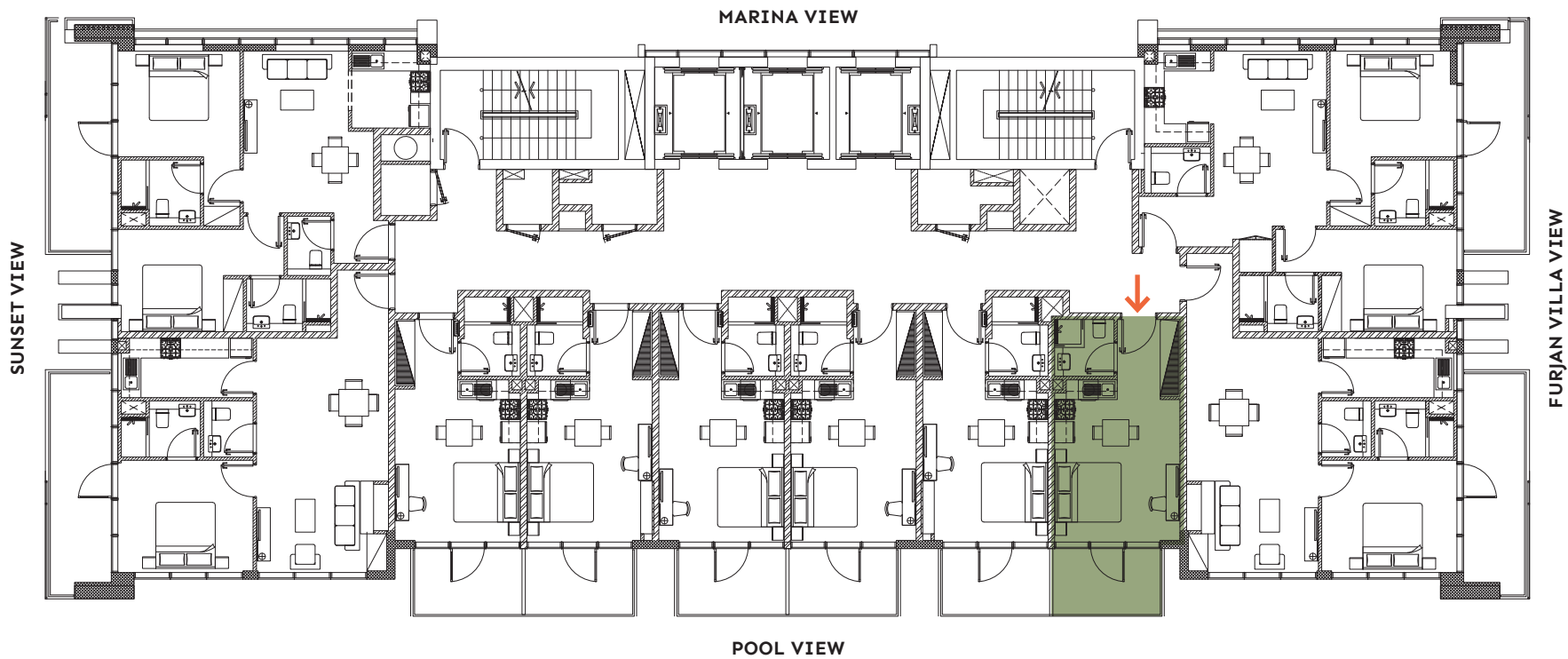
Studio Apartment A (2nd to 7th Floor)

FLOORPLAN

- > Pool view
- > Open plan living and dining area
- > Kitchen
- > Bathroom
- > Spacious balcony

UNIT AREA	
Suite Area	299.56 sqft
Balcony Area	73.41 sqft
<hr/>	
TOTAL AREA	372.97 sqft

TYPICAL FLOORPLAN



DISCLAIMER: Drawings are provided by our consultants. All dimensions, features and amenities are approximate at time of printing. Actual area may vary from stated area. The developer reserves the right to make revisions to the Floorplans and any features, materials and dimensions mentioned without further notice.

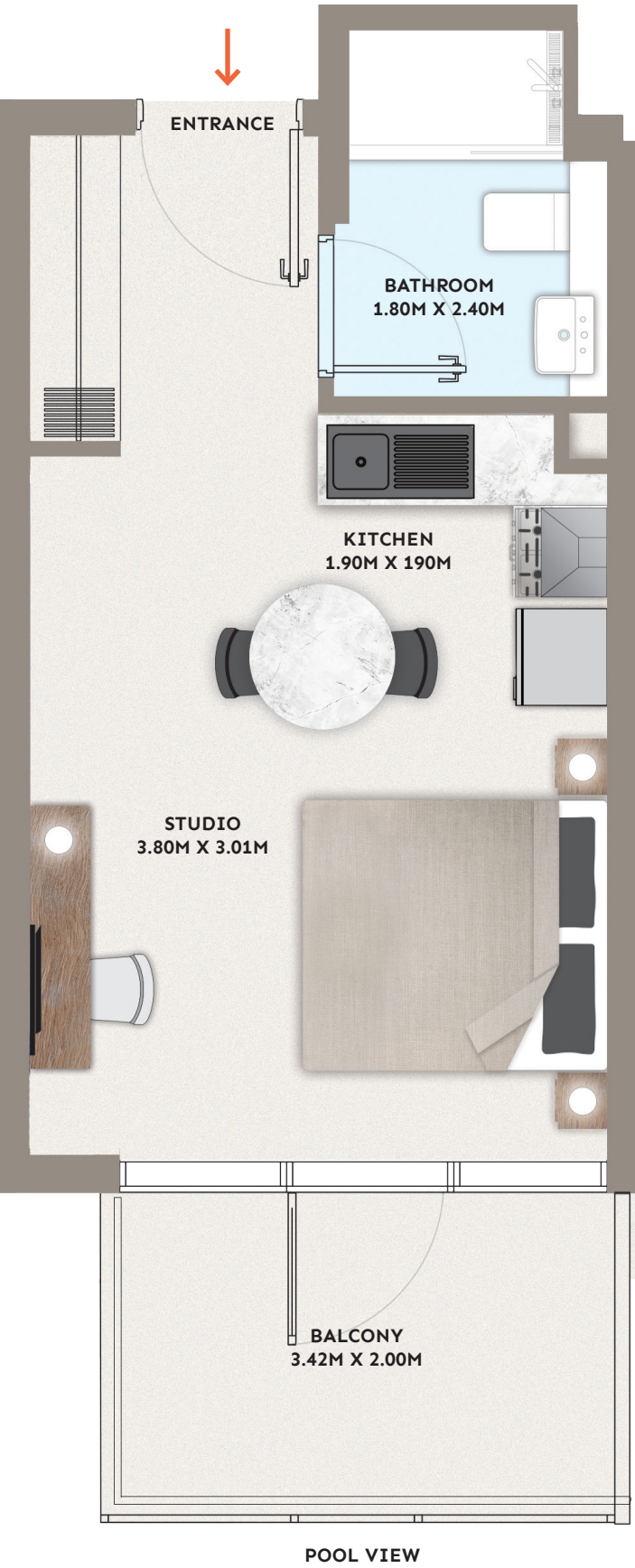
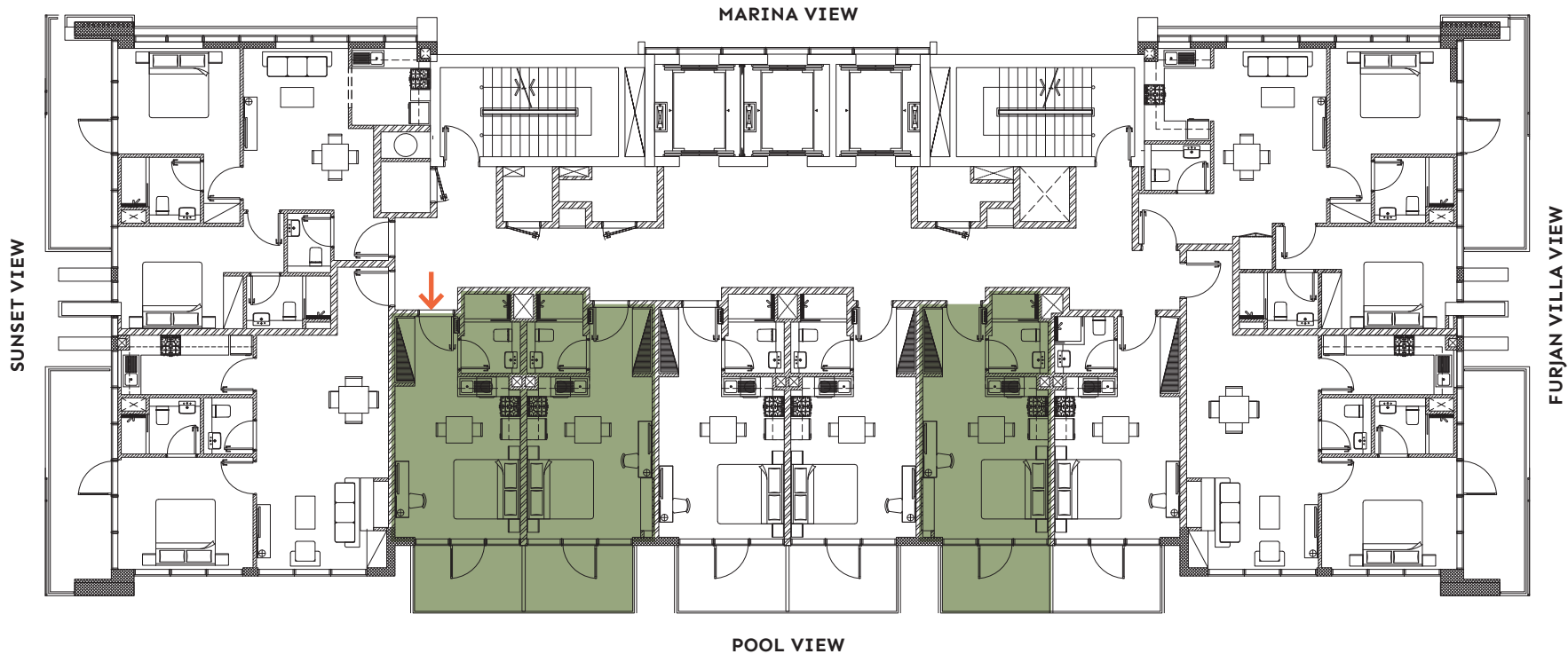
Studio Apartment B (2nd to 7th Floor)

FLOORPLAN

- > Pool view
- > Open plan living and dining area
- > Kitchen
- > Bathroom
- > Spacious balcony

UNIT AREA	
Suite Area	312.37 sqft
Balcony Area	73.41 sqft
<hr/>	
TOTAL AREA	385.78 sqft

TYPICAL FLOORPLAN



DISCLAIMER: Drawings are provided by our consultants. All dimensions, features and amenities are approximate at time of printing. Actual area may vary from stated area. The developer reserves the right to make revisions to the Floorplans and any features, materials and dimensions mentioned without further notice.

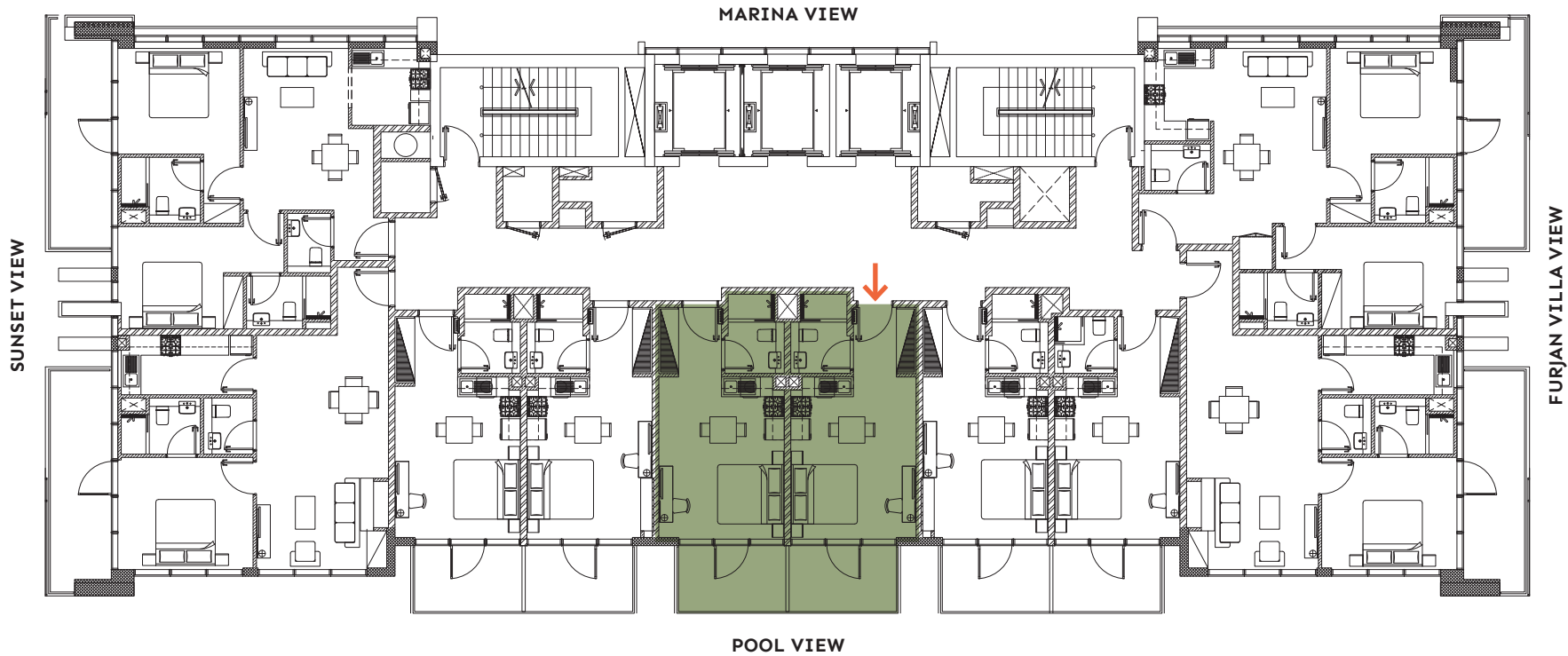
Studio Apartment C (2nd to 7th Floor)

FLOORPLAN

- > Pool view
- > Open plan living and dining area
- > Kitchen
- > Bathroom
- > Spacious balcony

UNIT AREA	
Suite Area	320.98 sqft
Balcony Area	73.41 sqft
<hr/>	
TOTAL AREA	394.39 sqft

TYPICAL FLOORPLAN



DISCLAIMER: Drawings are provided by our consultants. All dimensions, features and amenities are approximate at time of printing. Actual area may vary from stated area. The developer reserves the right to make revisions to the Floorplans and any features, materials and dimensions mentioned without further notice.

An Ideal Investment Opportunity

Experience a secure sanctuary with lasting peace of mind at PG ONE at Al Furjan.

Nestled within the tree-lined haven of Al Furjan in Dubai, this retreat is cocooned in safety and encompassed by all the amazing attractions Dubai is renowned for, making it a rewarding investment.

Bring your good fortune home to PG ONE at Al Furjan.

For further details please contact us on:
sales@puregoldliving.com

050 678 2424
www.puregoldliving.com

PG ONE at Al Furjan is brought to you by PG Properties Development; part of the group company of UAE superbrand Pure Gold Jewellers. Excellence and innovation are the two pillars upon which our vision has been built, and, like our award-winning exquisite jewellery, attention to detail has been meticulously applied to our residential offering. All in an upcoming area that yields high market value for high returns.

DEVELOPMENT BY

— PG —

— PG —
ONE
AT
AL FURJAN