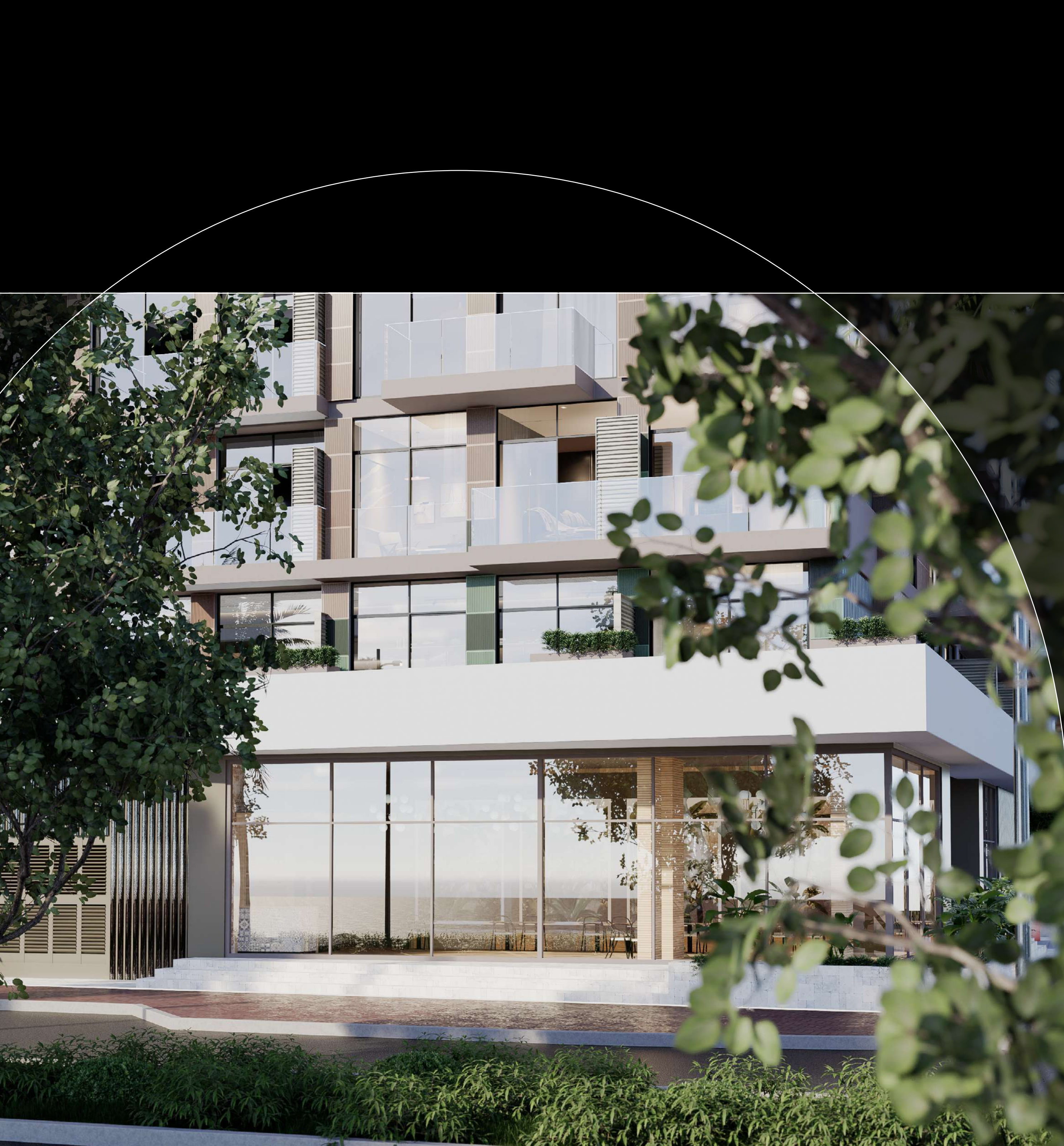


# STONEHENGE II

*by* SEGREX





CRAFTING  
LUXURY, **STONE**  
*by* **STONE**





# SEGREX DEVELOPMENT

## | BUILDING BEYOND BOUNDARIES

Introducing Segrex, your premier luxury real estate developer. With over 8 years of expertise in the global real estate market, we proudly present a portfolio of 7 successful projects, having delivered 25,000 square meters and currently developing more than 60,000 square meters. Our unwavering commitment to excellence consistently yields top-notch results, marking a legacy of quality and innovation in the construction industry.





*Jumeirah Village Circle:*  
**DUBAI'S DYNAMIC NEIGHBORHOOD**



# JVC: YOUR GATEWAY TO MODERN LIVING

Stonehenge 2 in Jumeirah Village Circle (JVC), Dubai, is strategically positioned in the heart of the city. JVC has emerged as a prime investment destination in Dubai due to its family-friendly environment and comprehensive community amenities. With abundant green spaces, parks, shopping malls, a variety of shops, luxury hotels, and schools in close proximity, JVC offers an ideal setting for both living and investment purposes.





A nighttime architectural rendering of a modern high-rise building, Stonehenge II. The building features a curved facade with a grid of windows and balconies, some of which are illuminated from within. The ground floor has large glass windows. In the foreground, there are palm trees and a street with a few cars. A large white circle is overlaid on the right side of the image, containing the title text.

# WELCOME *to* STONEHENGE II



# NORDIC CHIC

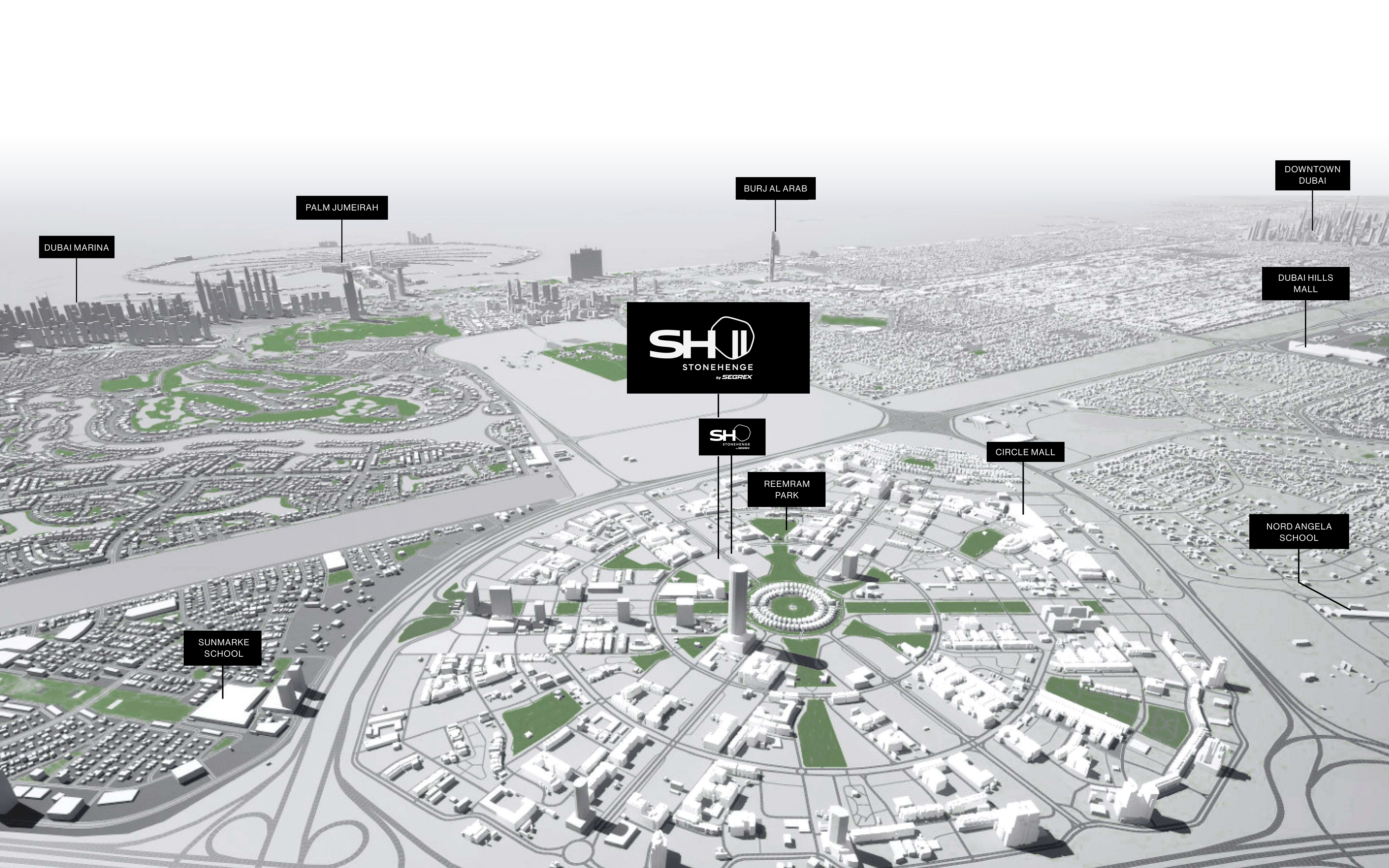
Discover Stonehenge 2: A contemporary residential gem, masterfully crafted with a touch of Nordic elegance. Expected to be completed by September 2025, this architectural marvel seamlessly combines modern design elements with a hint of Scandinavian charm. Boasting innovative architectural concepts, the development features two distinct volumes. The building presents a sleek geometric silhouette, enhanced by rhythmic decorative patterns accentuating the facade's corner.





# MODERN MASTERPIECES





DUBAI MARINA

PALM JUMEIRAH

BURJ AL ARAB

DOWNTOWN DUBAI

DUBAI HILLS MALL



REEMRAM PARK

CIRCLE MALL

NORD ANGELA SCHOOL

SUNMARKE SCHOOL



DESTINATIONS

Miracle garden	13 minutes (9,5 km)
Dubai Marina	17 minutes(12,8 km)
Souk Madinat	17 minutes (13,2 km)
Jumeirah BR Beach	18 minutes(13,4 km)
Kite Beach	20 minutes (18,2 km)
Downtown Dubai	20 minutes (21,6 km)

MALL

Circle Mall	5 minutes (2,4 km)
Dubai Hills Mall	10 minutes (8,3 km)
Al Nakheel Mall	13 minutes (12,8 km)
Mall of Emirates	14 minutes (11,9 km)
Dubai Marina Mall	18 minutes (13,5 km)
Dubai Mall	22 minutes (20,3 km)

EDUCATION

JSS school	3 minutes (1,2 km)
GEMS World Academy	9 minutes (5,8 km)
Sunmarke School	10 minutes (7,8 km)
Nord Angila School	10 minutes (9,3 km)
Dubai International Academy	10 minutes (8,0 km)

SPORTS FACILITY

Remraam community	4 minutes (1.7 km)
Wellfit World-class Gym	5 minutes (2,4 km)
Dubai Autodrome & Go Kart Track	10 minutes (8,1 km)
Emirates Golf Club	15 minutes (14,1 km)
Dubai International Cricket Stadium	15 minutes (14,1 km)

SUPERMARKET

Spinneys JVC	5 minutes (2,4 km)
Nesto JVC	5 minutes (2,4 km)
LuLu Hypermarket Al Barsha	13 minutes (11,2 km)

HEALTH CARE

LIFE Medical Centre	5 minutes (2,4 km)
Saudi German Hospital -	9 minutes (7.4 km)
Kings College London Dubai Hills	10 minutes (10,7 km)
Medcare Medical Centre Motor city	11 minutes (7,8 km)

AIRPORT

Dubai international Airport	20 minutes (30.1 km)
Al Maktoum International Airport	25 minutes (34,2 km)





## LOBBY ELEGANCE

Inspired by the pulse of contemporary life and subtly nodding to its namesake, Stonehenge, our lobby is adorned in natural hues of genuine stone, ranging from light gray to accent black. A harmonious blend of form and function, the reception desk stands as a focal point beneath a floating light ceiling, easily visible from the street. Decorative columns guide your path to the elevators, leading to the cozy apartments above. Three distinct sofa areas cater to social gatherings, business meetings, or simply relaxing while awaiting transportation. Adjacent to the entrance, a cafe and restaurant offer the convenience of hosting meetings without leaving the comfort of home.



# CONNECTIONS

## *Meet* COMFORT











## CAPTIVATING INTERIORS

Experience the allure of the public zone, where natural shades from light gray to black create a captivating ambiance. Large formats of porcelain stoneware adorn the floors and walls, blending various textures - from smooth elegance to the rugged charm of natural stone. Enhanced by wooden accents, this space exudes warmth and tranquility, complemented by contemporary art pieces adorning the floors.





# ENCHANTING ESSENCE



# FULLY EQUIPPED KITCHENS

Explore a wide array of apartments, ranging from 41 to 195 sq.m., designed to accommodate families and young individuals alike. Every apartment will have a built-in kitchen full set and Bosch appliances. Experience unparalleled comfort and convenience in every corner of your new home.







YOUR *Ideal*  
— APARTMENT



# SYNCHRONIZED LIVING

## SMART HOMES AT STONEHENGE RESIDENCES

Each apartment at Stonehenge Residences is thoughtfully designed with distinct areas, seamlessly integrated with state-of-the-art smart home panels featuring Alexa





# SKYLINE SANCTUARY

Indulge in Elevated Living: 10th Floor Penthouses Designed for Discerning Tastes. Experience Breathtaking Views through 4.5-Meter High Stained Glass Windows, Luxuriate in Ample Personal Space, and Savor the Exclusive Privileges of a Private Garden and City-View Barbecue Area.





# RELAXATION HEAVEN







## ROOFTOP RETREAT

Immerse yourself in the allure of our cutting- edge infinity pool, offering refreshing coolness in summer and cozy warmth in winter. Indulge at the rooftop barbecue area, all against breathtaking panoramic views. Relish the beauty of each moment with Stonehenge as your luxurious backdrop.





## ELEVATE YOUR FITNESS

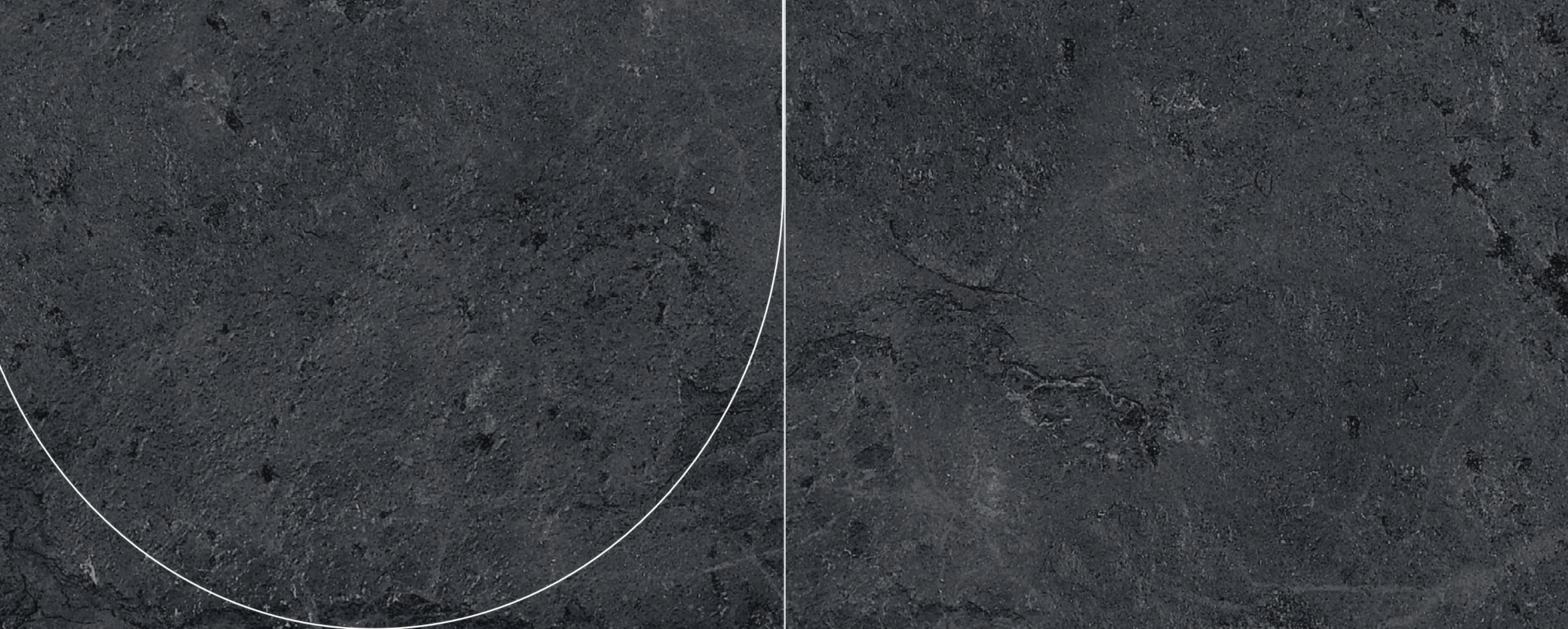
Our state-of-the-art gym, fully equipped with Technogym brand amenities, invites you to a holistic wellness experience. Immerse yourself in the latest workout trends, and unwind in the sauna or hammam for complete relaxation. Fitness isn't just a routine; it's a lifestyle at Stonehenge.





IT NEVER GETS EASIER  
YOU JUST GET BETTER





# STONEHENGE'S *Secret* GARDE

Discover serenity in Stonehenge's courtyard – an enchanting garden sanctuary with winding paths evoking English labyrinths. Whether practicing yoga, unwinding with children, or indulging in quiet reading, find your peaceful escape in shaded corners.



Secrex Development  
8/22



# STONEHENGE'S *Splash* CORNER

This vibrant area is a haven for little ones, featuring interactive water elements and playful structures that promise endless laughter and joy. Surrounded by the beauty of nature, it's a safe and delightful space for children to immerse themselves in watery adventures.









# CINEMA STARS

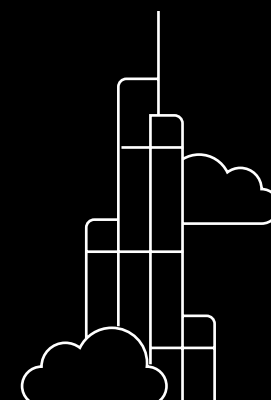
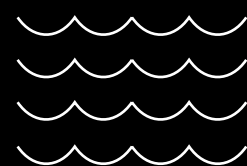
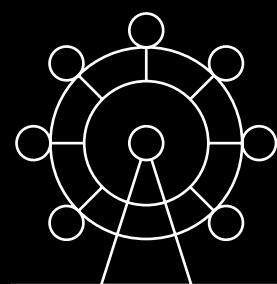
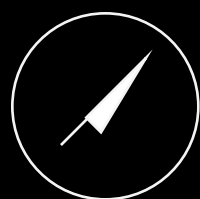
Enjoy cozy evenings outdoors, watching your family's favorite movies. Our courtyard cinema area provides the perfect setting for quality time with loved ones, making every movie night a cherished moment.





# FLOOR PLANS







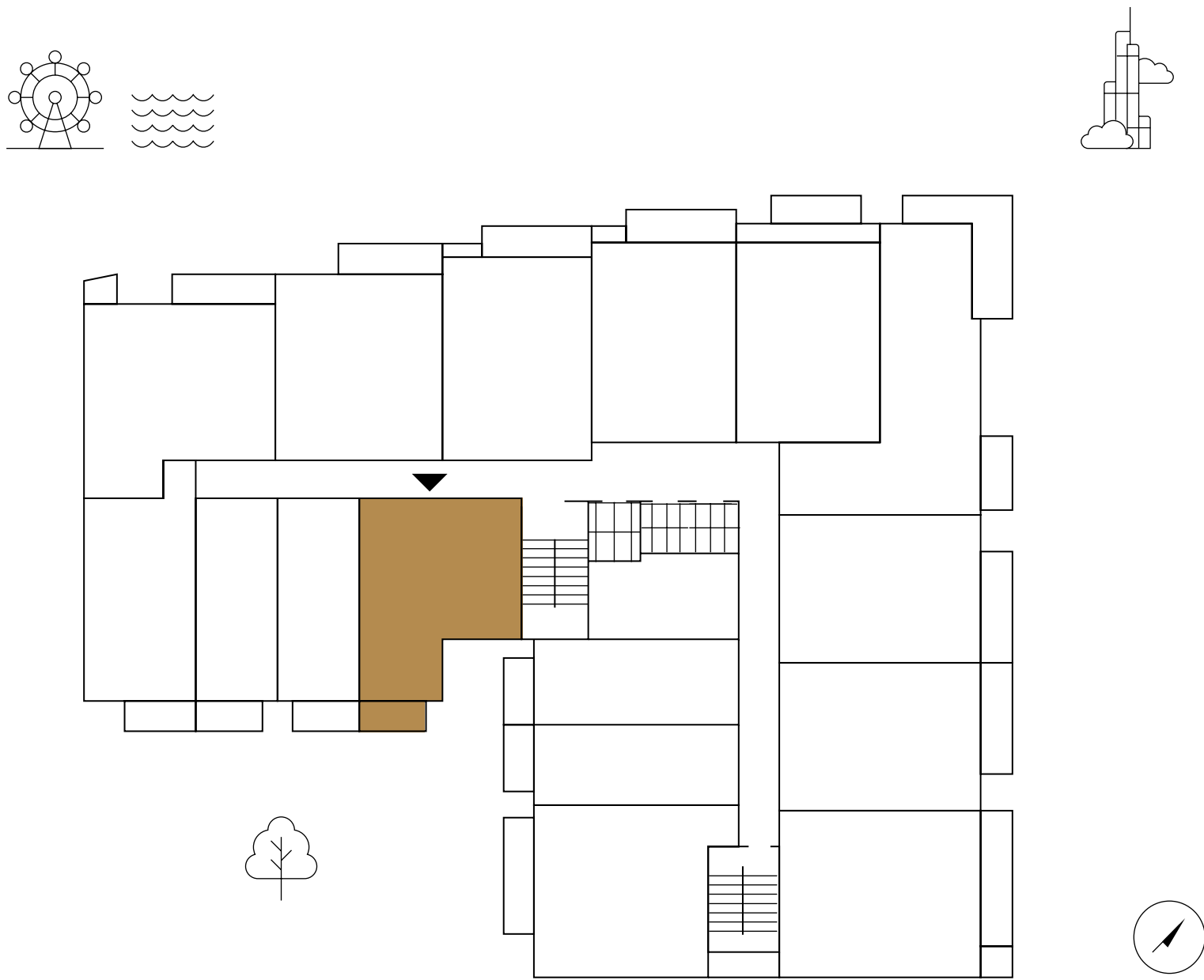
# 1 BEDROOM

## 01 SERIES

Suite Area: from 635,39 to 635.61 sq.ft.

Balcony Area/Garden: from 56.40 to 318.40 sq.ft.

Total Area: from 691.80 to 954.01 sq.ft.



The floor plan images are for illustration purposes and do not accurately depict the size, features, specifications, fittings, or furnishings. All materials, dimensions, and drawings are approximate. The exact area will be specified in the individual unit's sales agreement



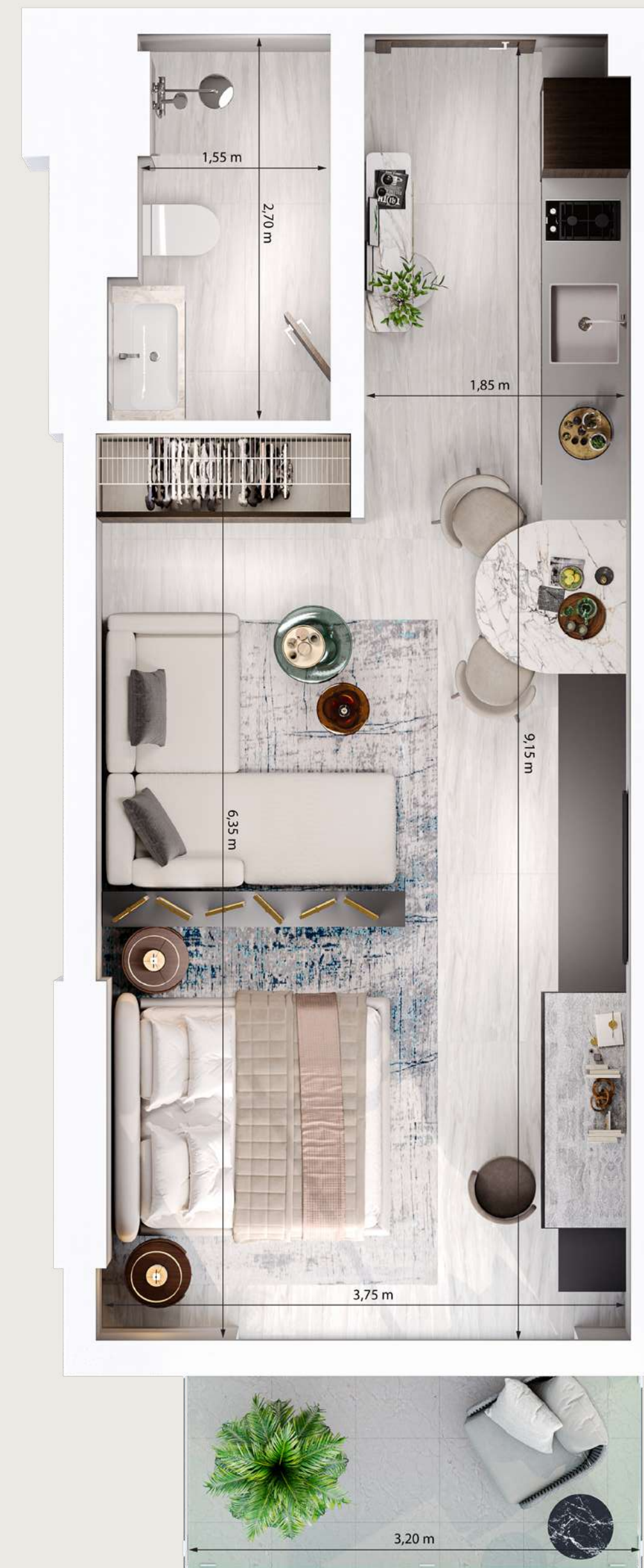
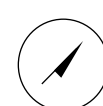
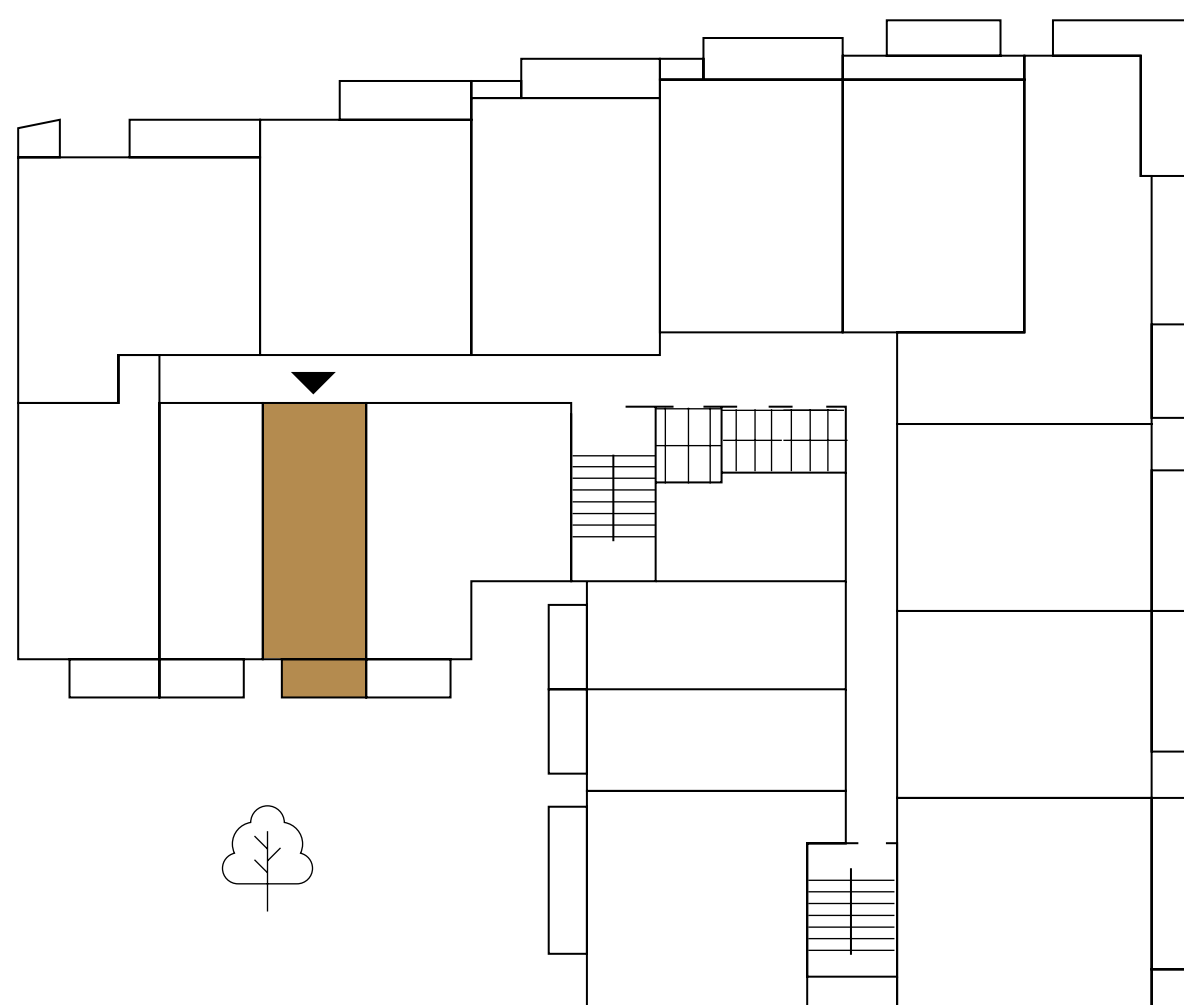
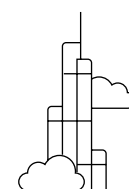
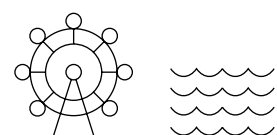
# STUDIO

## 02 SERIES

Suite Area: 392,45 sq.ft.

Balcony Area/Garden: from 55.54 to 109.25 sq.ft.

Total Area: from 447.99 to 501.71 sq.ft.



The floor plan images are for illustration purposes and do not accurately depict the size, features, specifications, fittings, or furnishings.  
All materials, dimensions, and drawings are approximate. The exact area will be specified in the individual unit's sales agreement



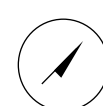
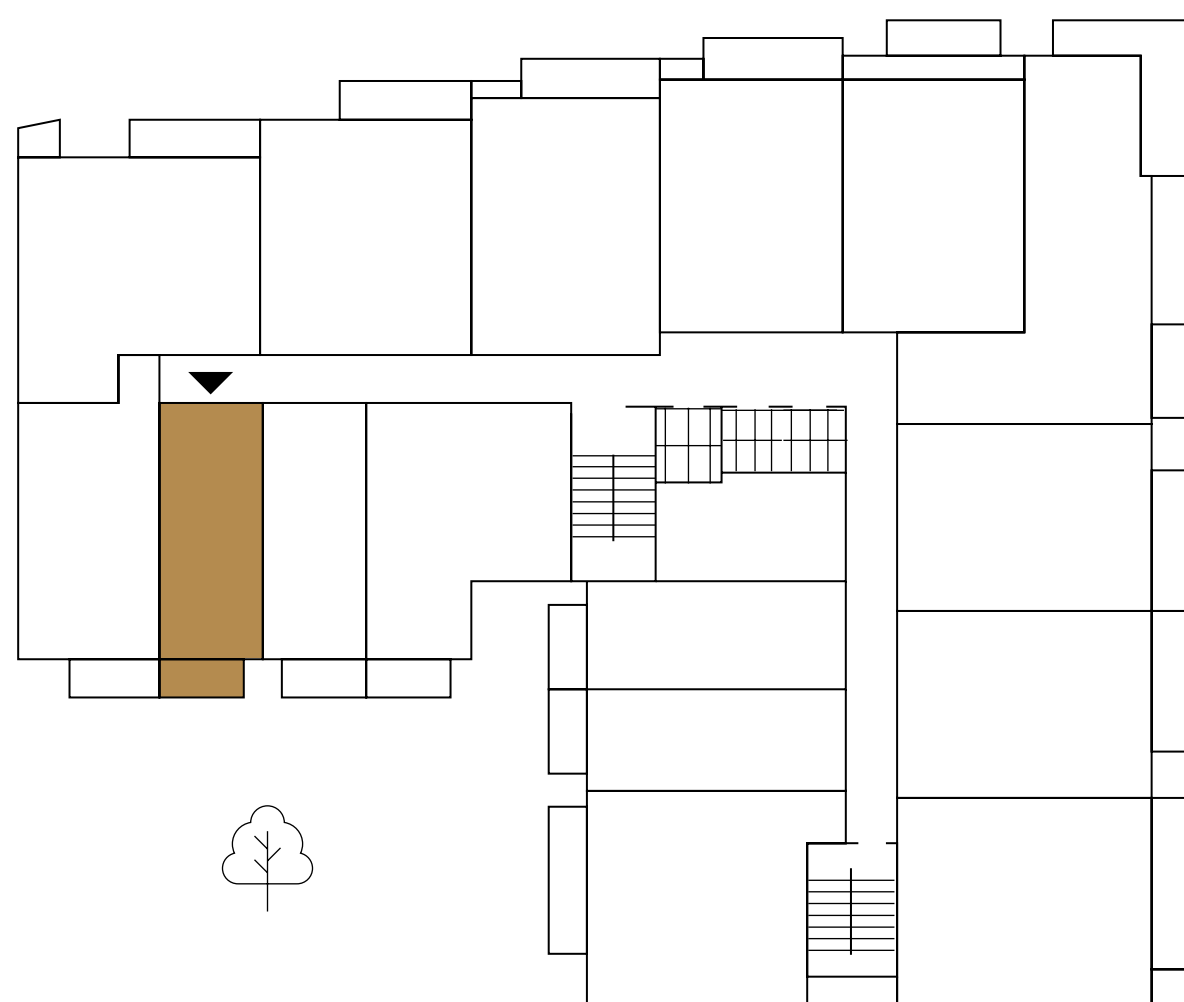
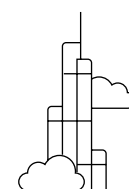
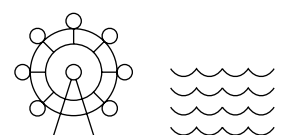
# STUDIO

## 03 SERIES

Suite Area: 391,70 sq.ft.

Balcony Area/Garden: from 55.54 to 109.25 sq.ft.

Total Area: from 447.24 to 500.95 sq.ft.



The floor plan images are for illustration purposes and do not accurately depict the size, features, specifications, fittings, or furnishings.  
All materials, dimensions, and drawings are approximate. The exact area will be specified in the individual unit's sales agreement



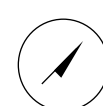
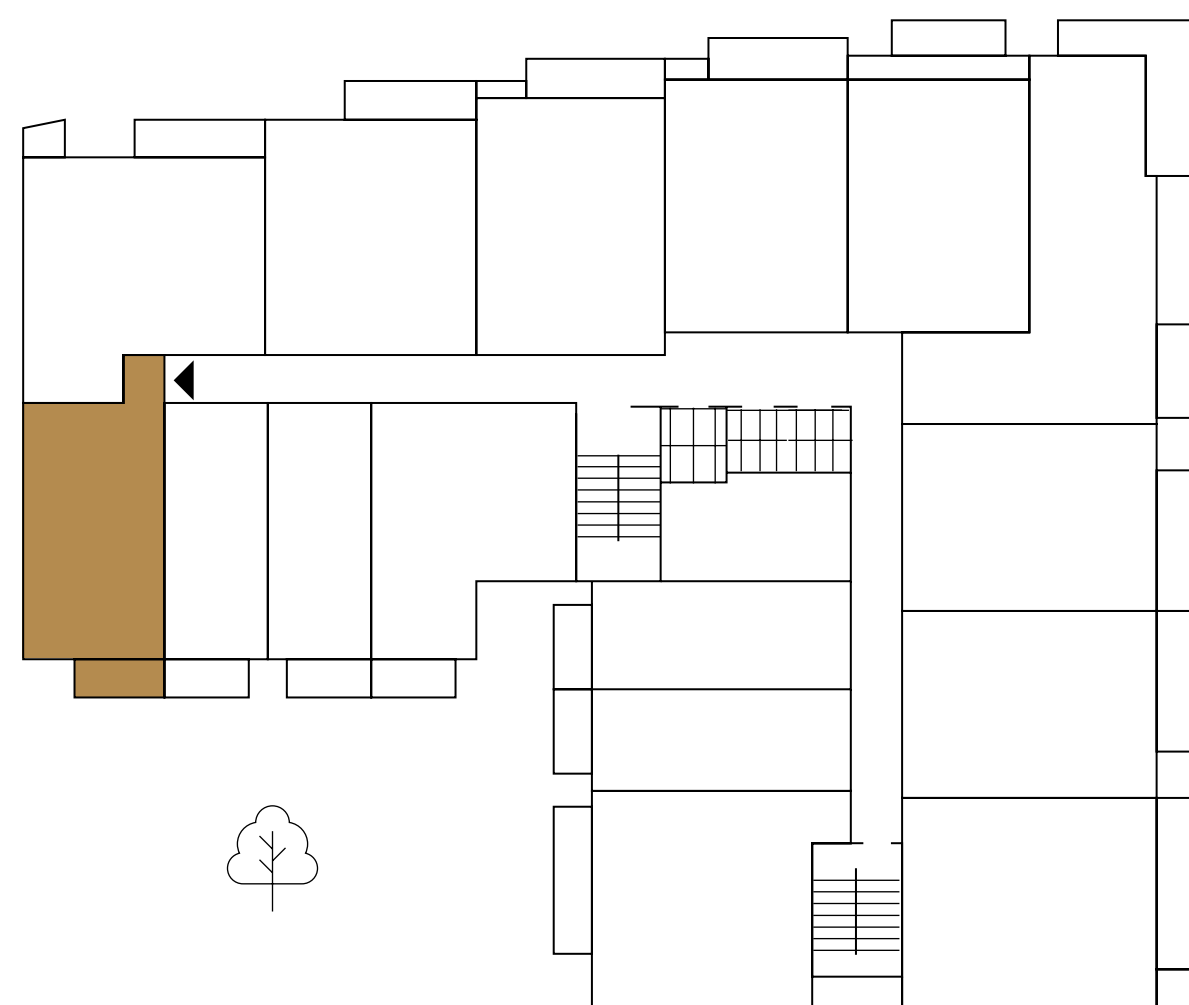
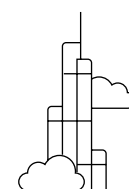
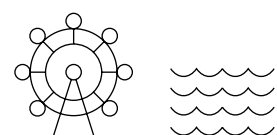
# STUDIO

## 04 SERIES

Suite Area: 540,89 sq.ft.

Balcony Area/Garden: from 56.40 to 142.19 sq.ft.

Total Area: from 597.29 to 683.08sq.ft.



The floor plan images are for illustration purposes and do not accurately depict the size, features, specifications, fittings, or furnishings.  
All materials, dimensions, and drawings are approximate. The exact area will be specified in the individual unit's sales agreement



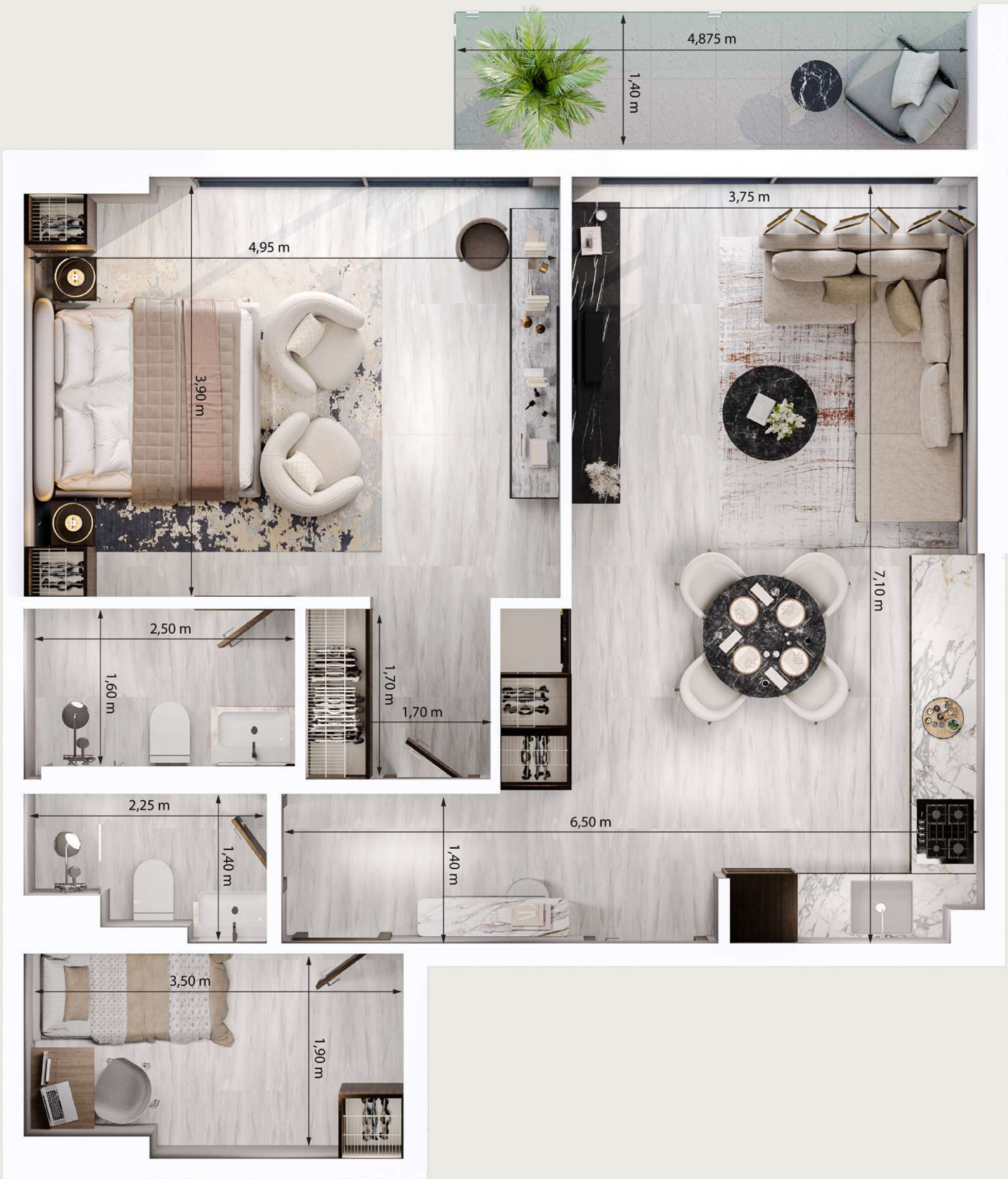
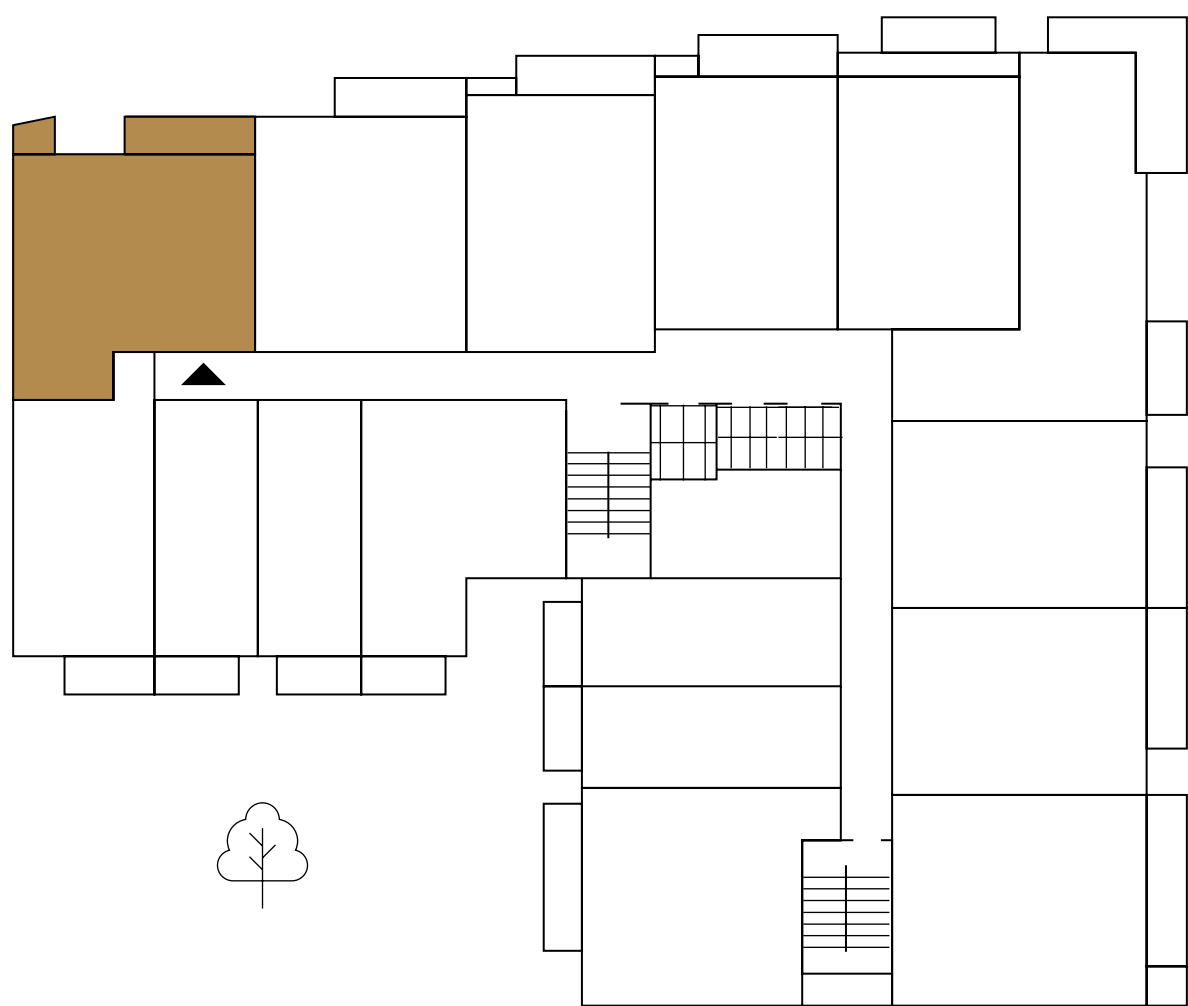
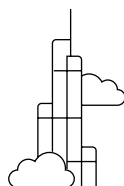
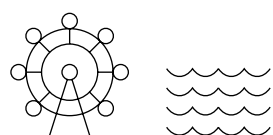
# 1 BEDROOM

## 05 SERIES

Suite Area: from 786,30 to 786.63 sq.ft.

Balcony Area: from 75.46 to 142.94 sq.ft.

Total Area: from 861.87 to 929.57 sq.ft.



The floor plan images are for illustration purposes and do not accurately depict the size, features, specifications, fittings, or furnishings. All materials, dimensions, and drawings are approximate. The exact area will be specified in the individual unit's sales agreement



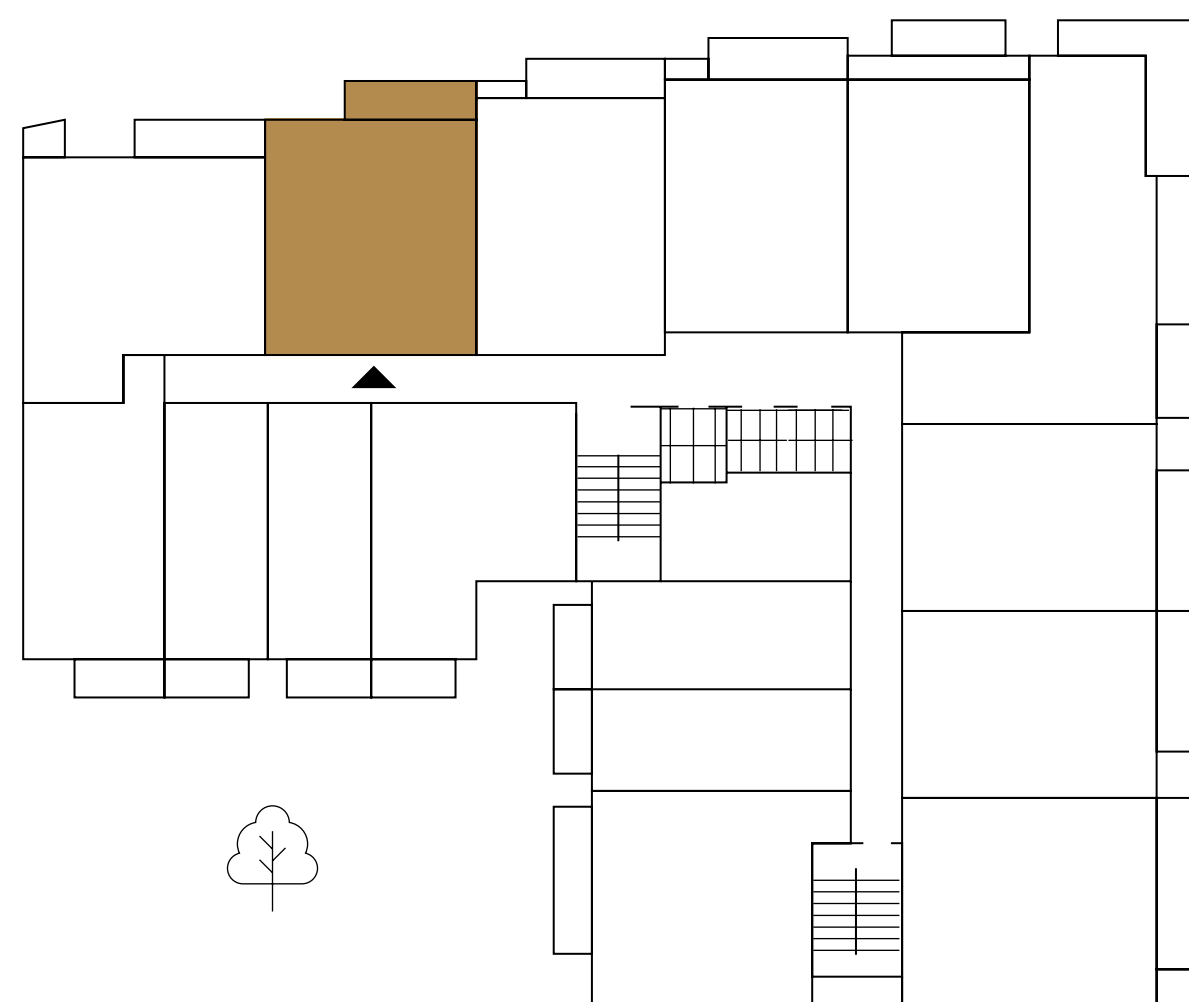
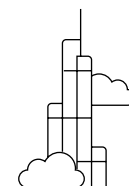
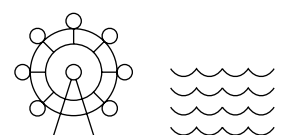
# 1 BEDROOM

## 06 SERIES

Suite Area: 709,34 sq.ft.

Balcony Area: from 64.58 to 122.28 sq.ft.

Total Area: from 773.93 to 831.62sq.ft.



The floor plan images are for illustration purposes and do not accurately depict the size, features, specifications, fittings, or furnishings. All materials, dimensions, and drawings are approximate. The exact area will be specified in the individual unit's sales agreement



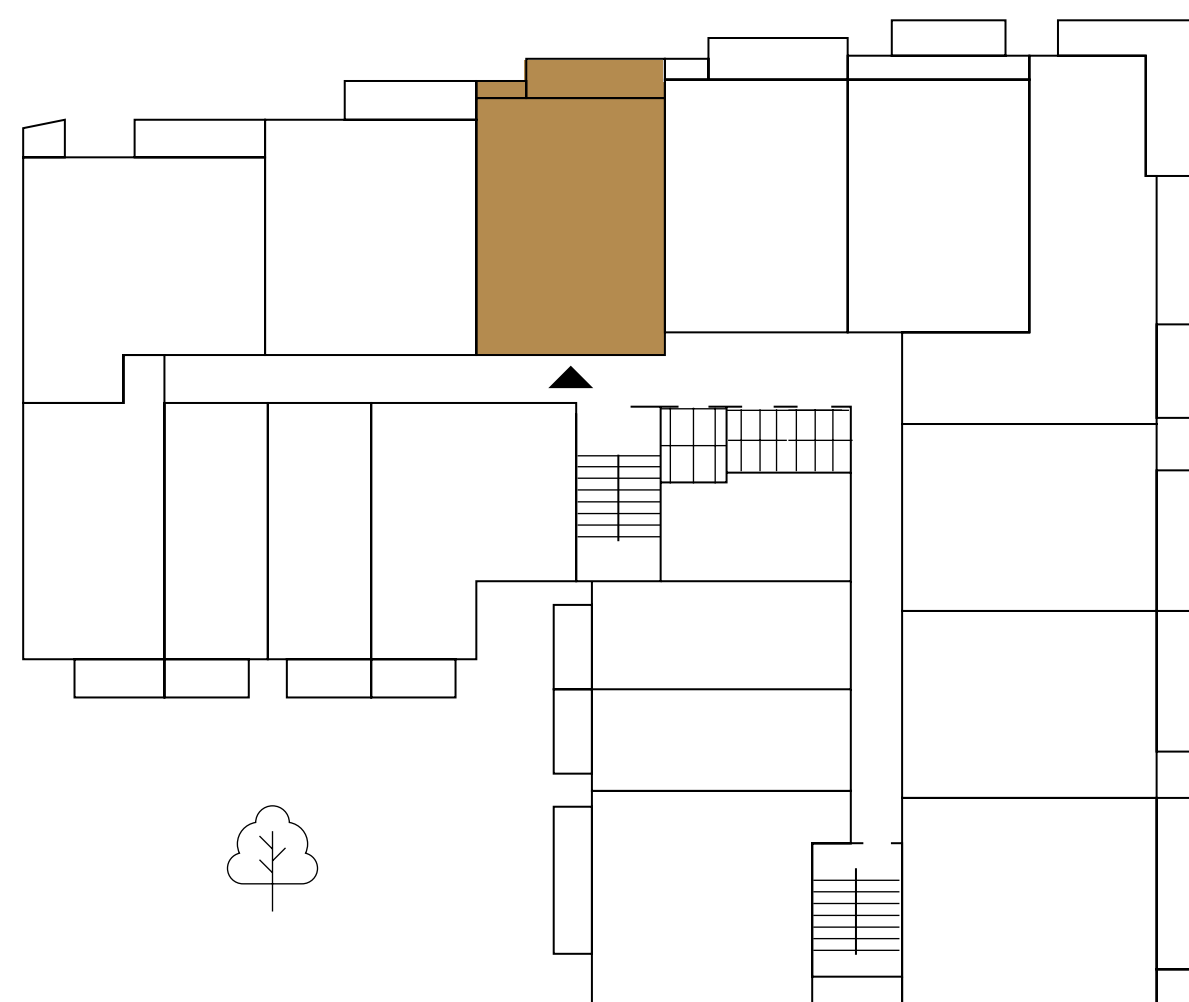
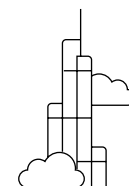
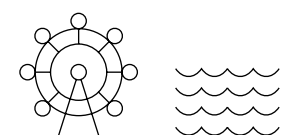
# 1 BEDROOM

## 07 SERIES

Suite Area: 688,57 sq.ft.

Balcony Area: from 56.73 to 115.71 sq.ft.

Total Area: from 745.29 to 804.28 sq.ft.



The floor plan images are for illustration purposes and do not accurately depict the size, features, specifications, fittings, or furnishings.  
All materials, dimensions, and drawings are approximate. The exact area will be specified in the individual unit's sales agreement



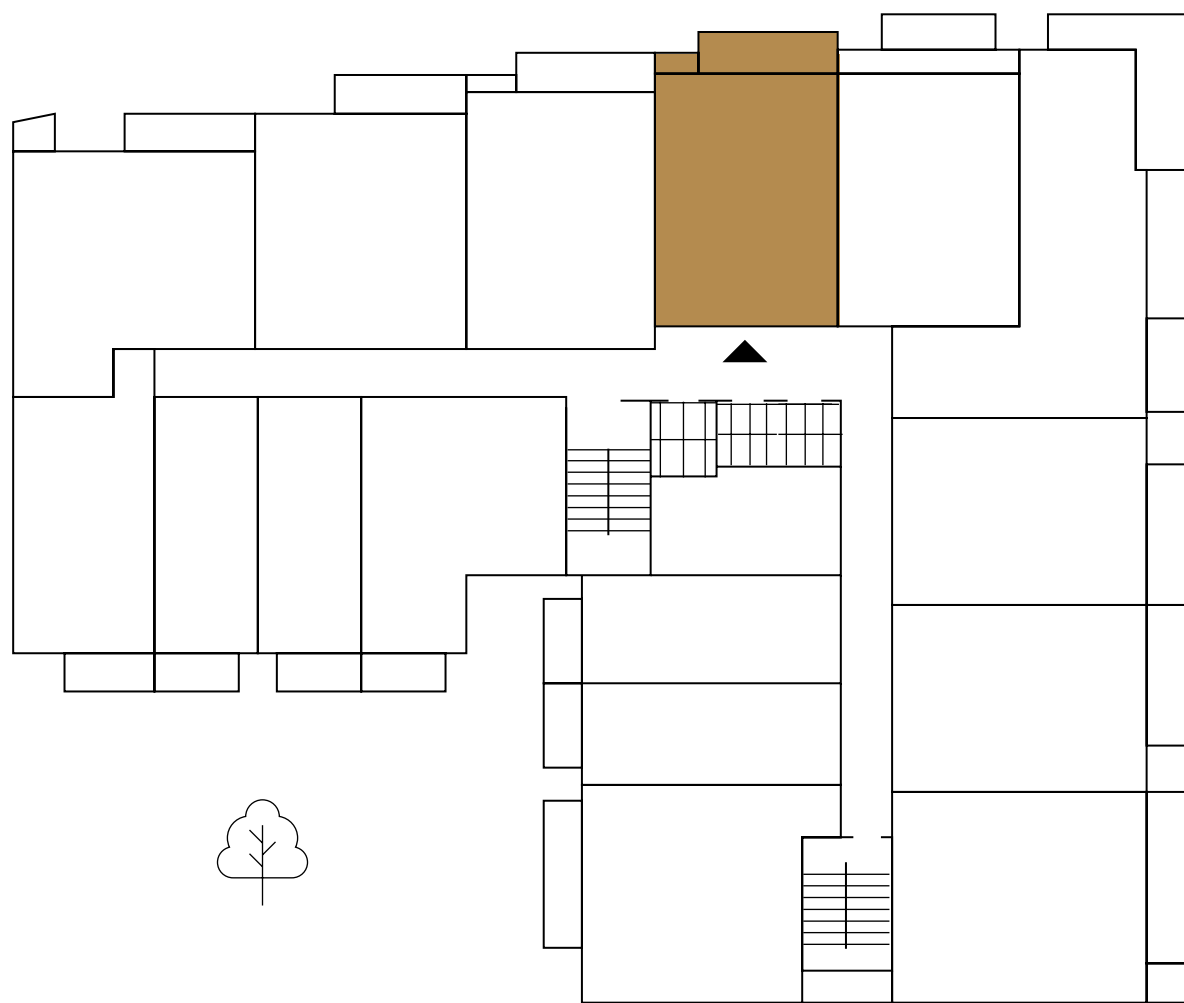
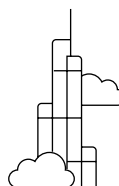
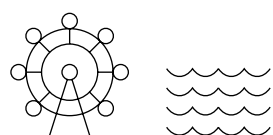
# 1 BEDROOM

## 08 SERIES

Suite Area: 688,89 sq.ft.

Balcony Area: from 48.87 to 108.50 sq.ft.

Total Area: from 737.76 to 797.39 sq.ft.



The floor plan images are for illustration purposes and do not accurately depict the size, features, specifications, fittings, or furnishings. All materials, dimensions, and drawings are approximate. The exact area will be specified in the individual unit's sales agreement



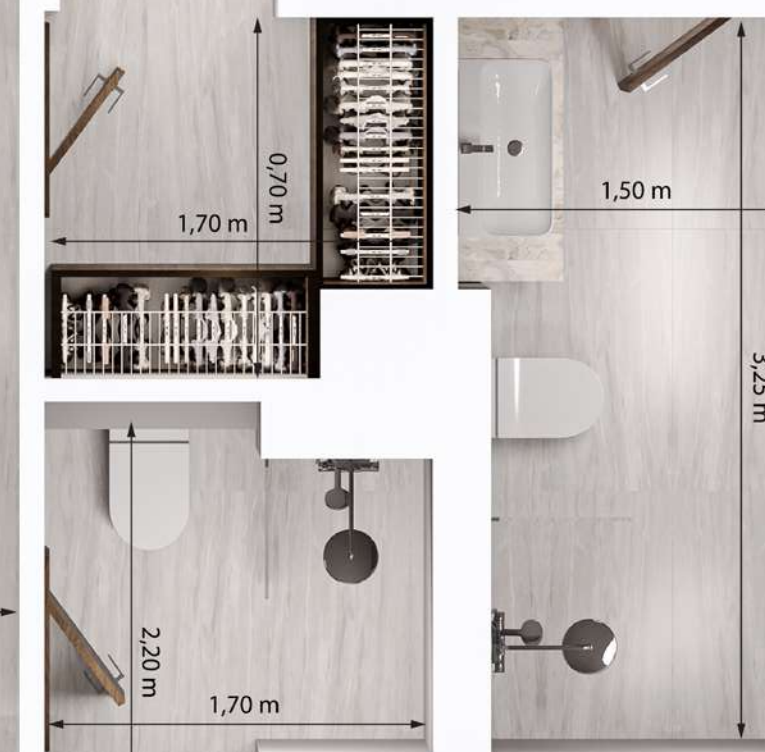
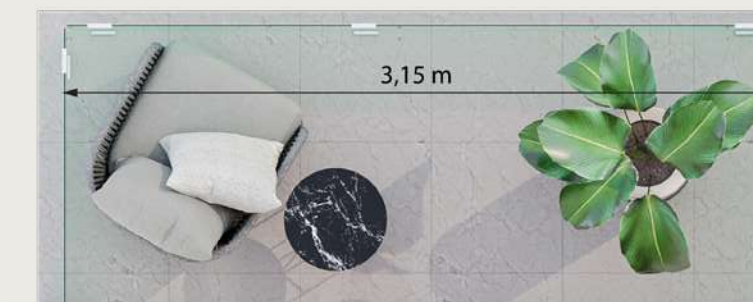
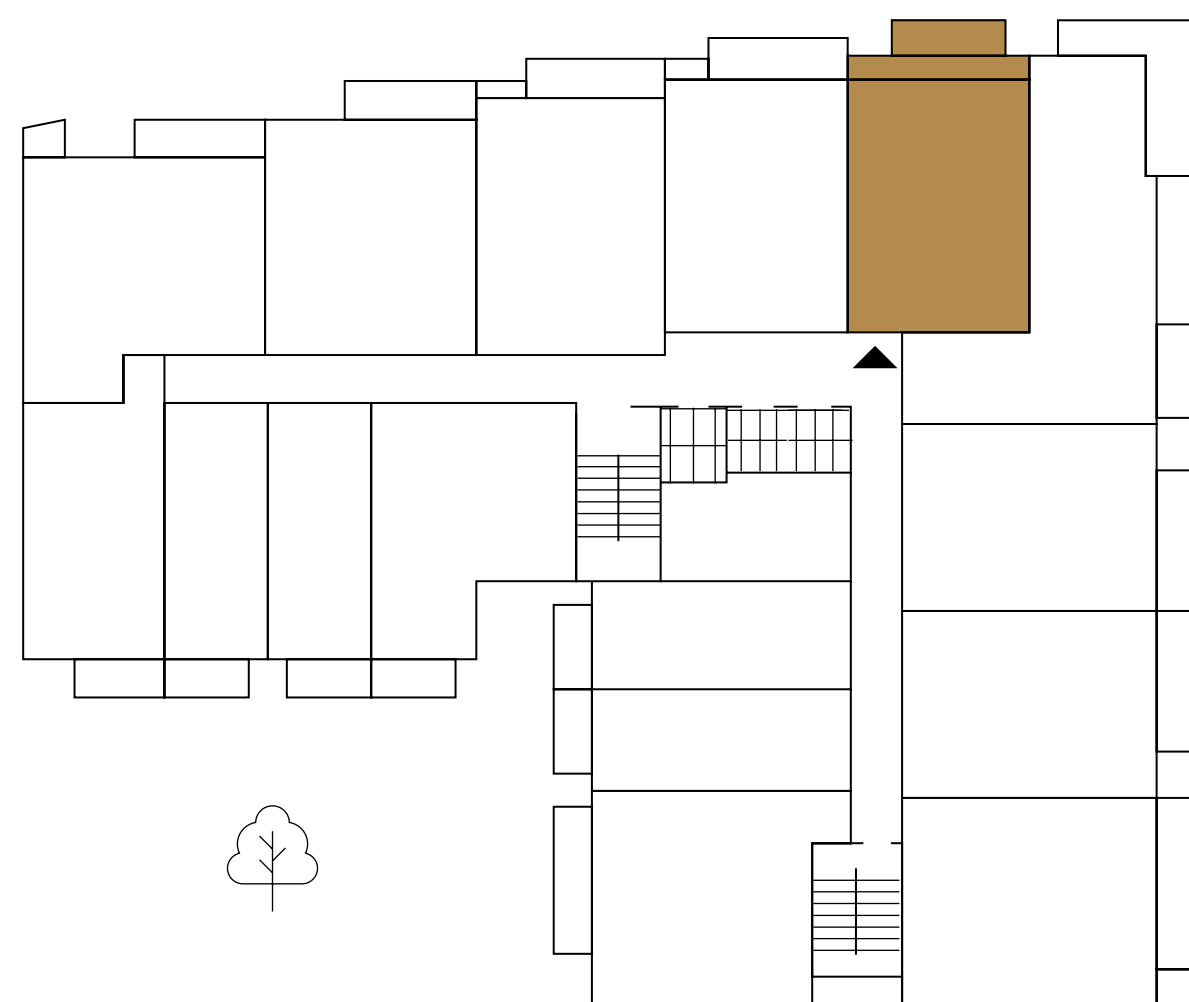
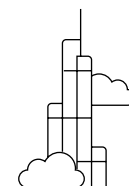
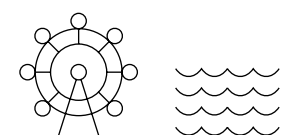
# 1 BEDROOM

## 09 SERIES

Suite Area: 743,79 sq.ft.

Balcony Area: from 49.19 to 102.36 sq.ft.

Total Area: from 792.98 to 846.15 sq.ft.



The floor plan images are for illustration purposes and do not accurately depict the size, features, specifications, fittings, or furnishings. All materials, dimensions, and drawings are approximate. The exact area will be specified in the individual unit's sales agreement



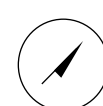
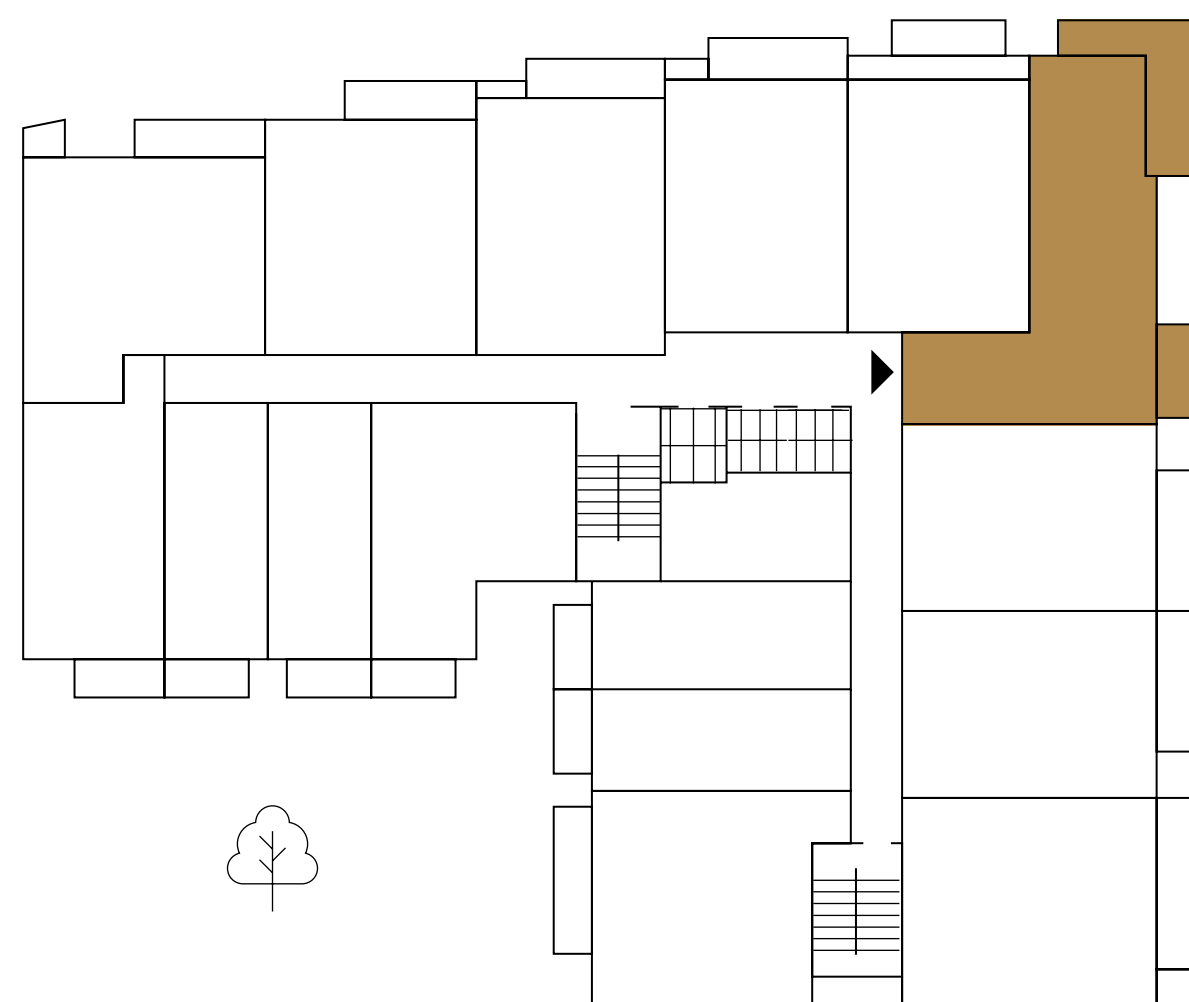
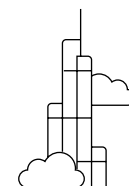
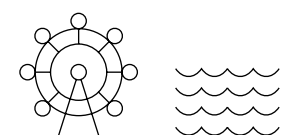
# 1 BEDROOM

## 10 SERIES

Suite Area: from 799,01 to 799.54 sq.ft.

Balcony Area: from 126.48 to 373.94 sq.ft.

Total Area: from 792.98 to 1.173.48 sq.ft.



The floor plan images are for illustration purposes and do not accurately depict the size, features, specifications, fittings, or furnishings. All materials, dimensions, and drawings are approximate. The exact area will be specified in the individual unit's sales agreement.



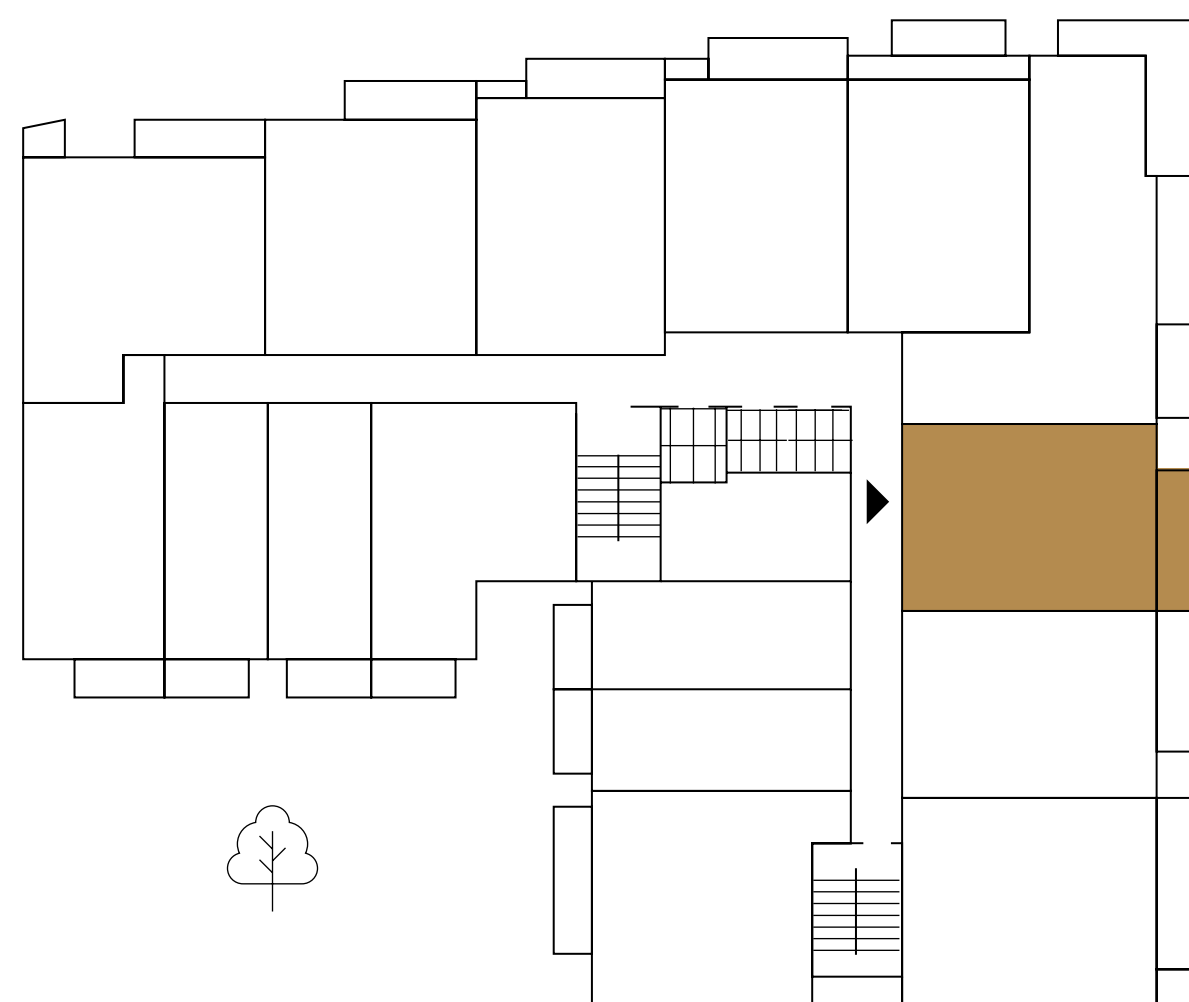
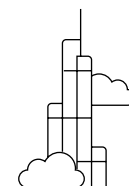
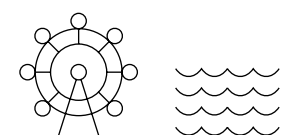
# 1 BEDROOM

## 11 SERIES

Suite Area: 699,87 sq.ft.

Balcony Area: from 88.80 to 119.91 sq.ft.

Total Area: from 788.67 to 819.78 sq.ft.



The floor plan images are for illustration purposes and do not accurately depict the size, features, specifications, fittings, or furnishings. All materials, dimensions, and drawings are approximate. The exact area will be specified in the individual unit's sales agreement



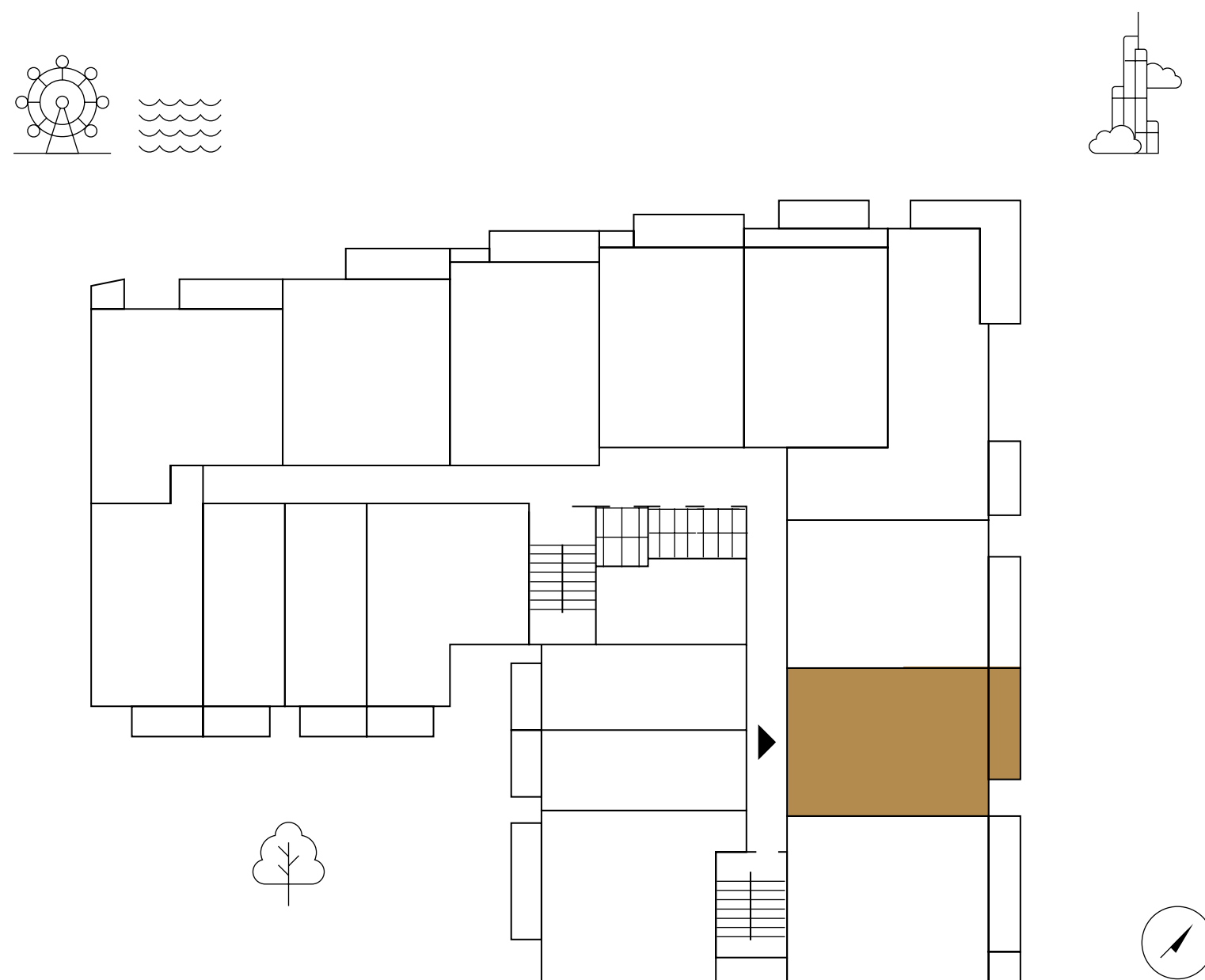
# 1 BEDROOM

## 12 SERIES

Suite Area: 695,35 sq.ft.

Balcony Area: from 88.48 to 119.80 sq.ft.

Total Area: from 783.83 to 815.15 sq.ft.



The floor plan images are for illustration purposes and do not accurately depict the size, features, specifications, fittings, or furnishings. All materials, dimensions, and drawings are approximate. The exact area will be specified in the individual unit's sales agreement



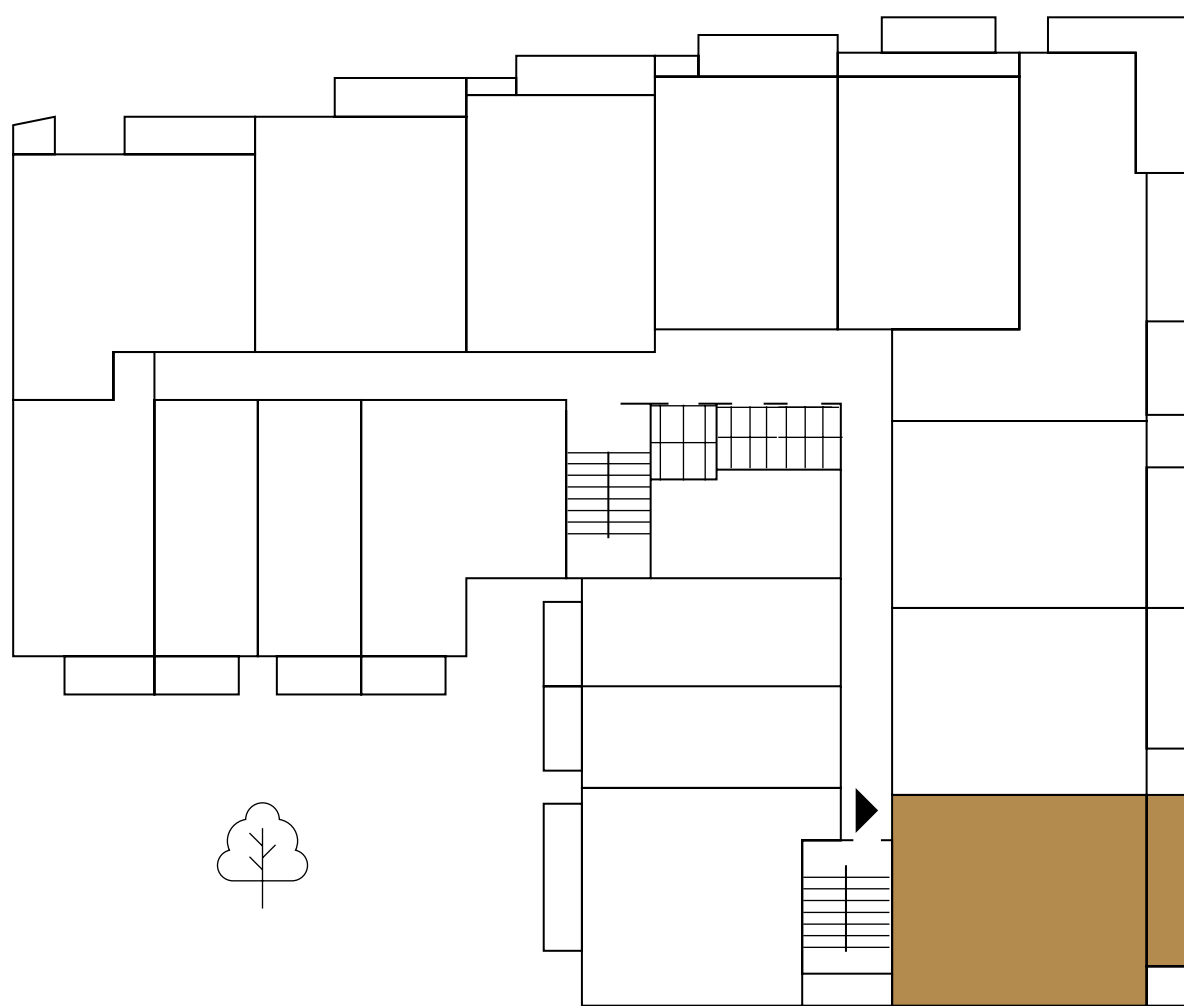
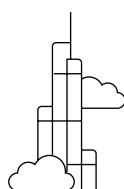
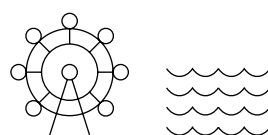
# 1 BEDROOM

## 13 SERIES

Suite Area: 786,84 sq.ft.

Balcony Area: from 92.89 to 110.33 sq.ft.

Total Area: from 879.73 to 897.17 sq.ft.



The floor plan images are for illustration purposes and do not accurately depict the size, features, specifications, fittings, or furnishings. All materials, dimensions, and drawings are approximate. The exact area will be specified in the individual unit's sales agreement



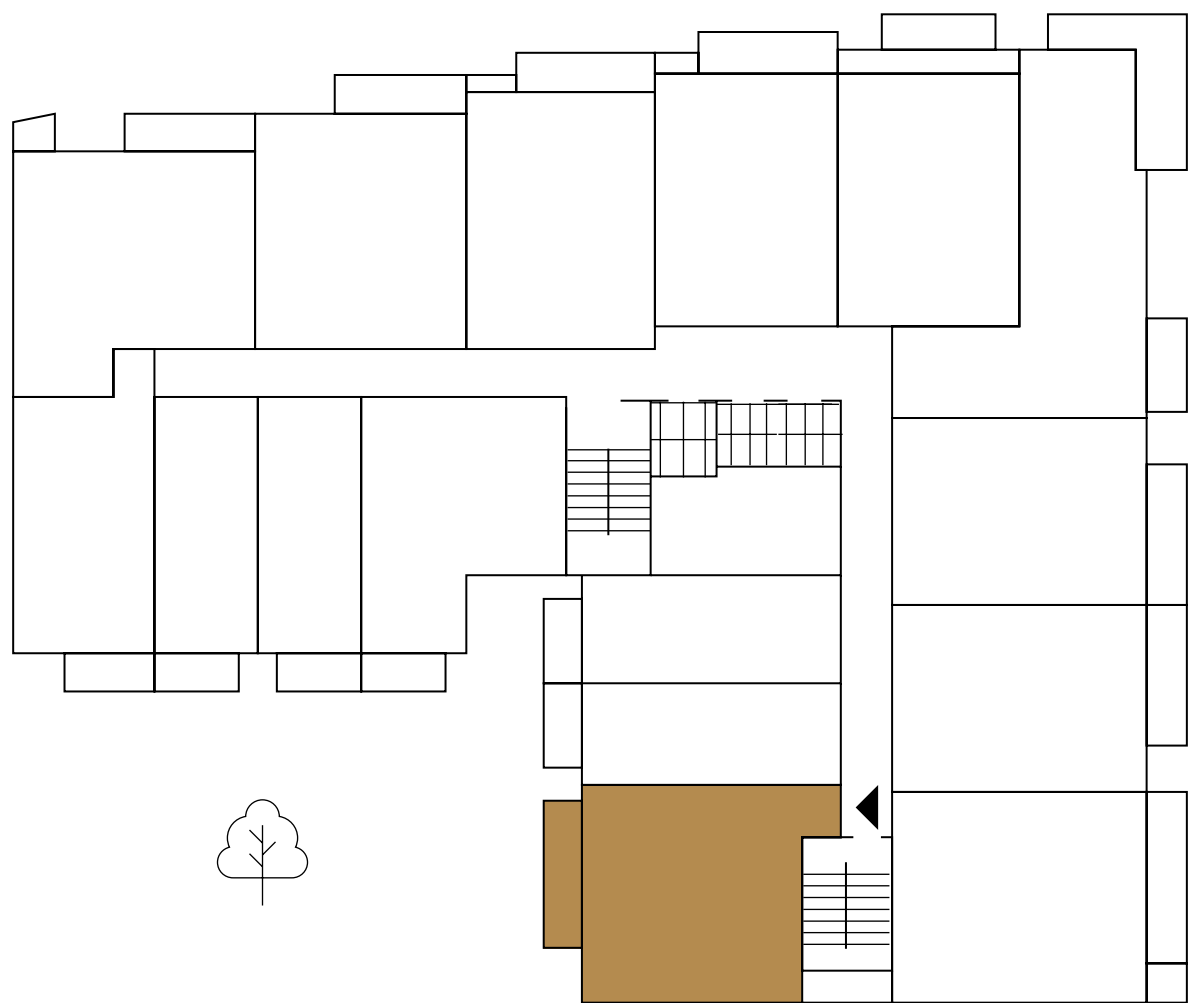
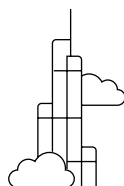
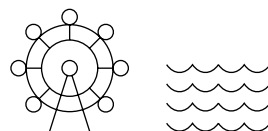
# 1 BEDROOM

## 14 SERIES

Suite Area: 719,03 sq.ft.

Balcony Area: 96.44 sq.ft.

Total Area: 815.47 sq.ft.



The floor plan images are for illustration purposes and do not accurately depict the size, features, specifications, fittings, or furnishings. All materials, dimensions, and drawings are approximate. The exact area will be specified in the individual unit's sales agreement



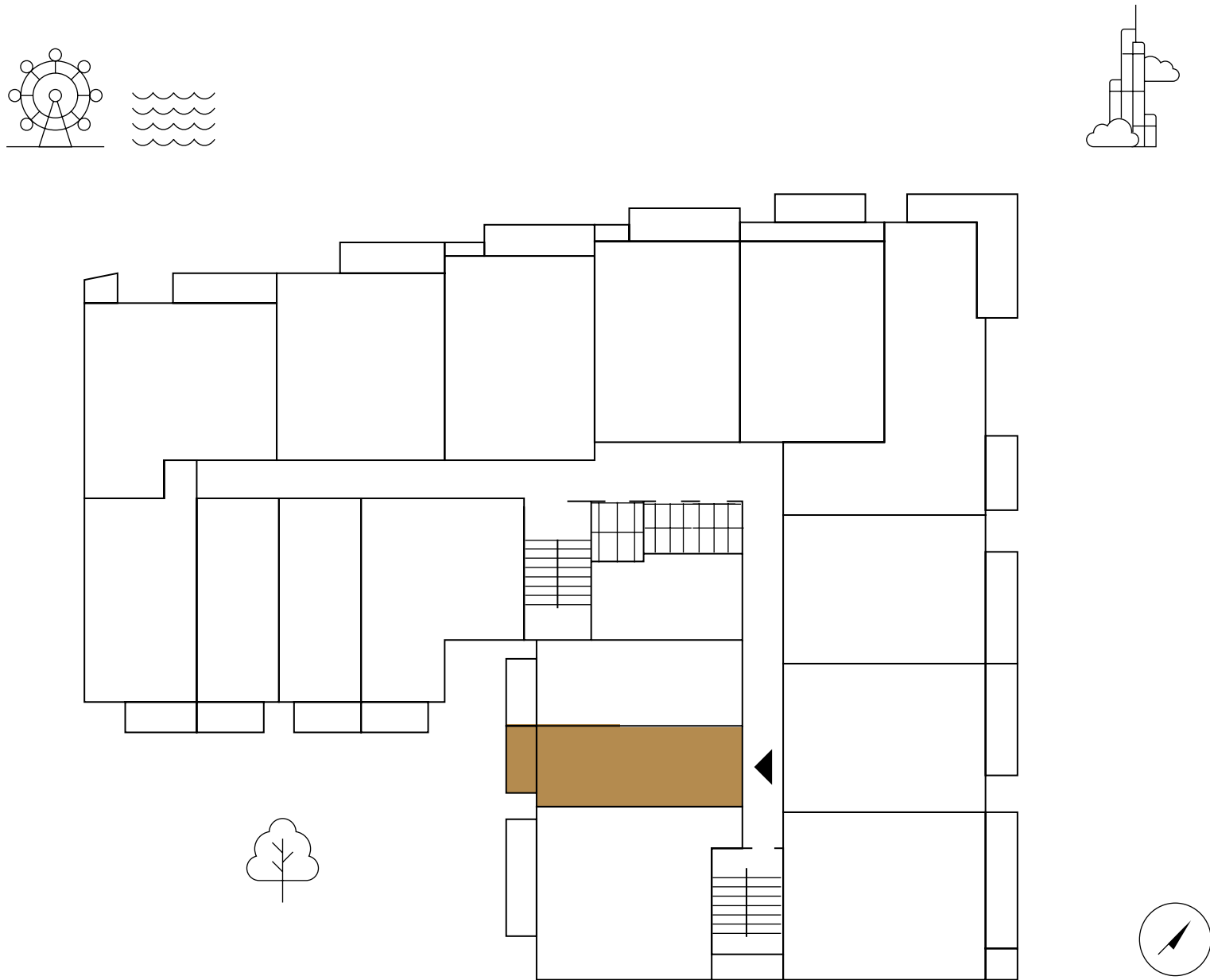
# STUDIO

## 15 SERIES

Suite Area: 399,13 sq.ft.

Balcony Area: 53.07 sq.ft.

Total Area: 452.19 sq.ft.



The floor plan images are for illustration purposes and do not accurately depict the size, features, specifications, fittings, or furnishings. All materials, dimensions, and drawings are approximate. The exact area will be specified in the individual unit's sales agreement



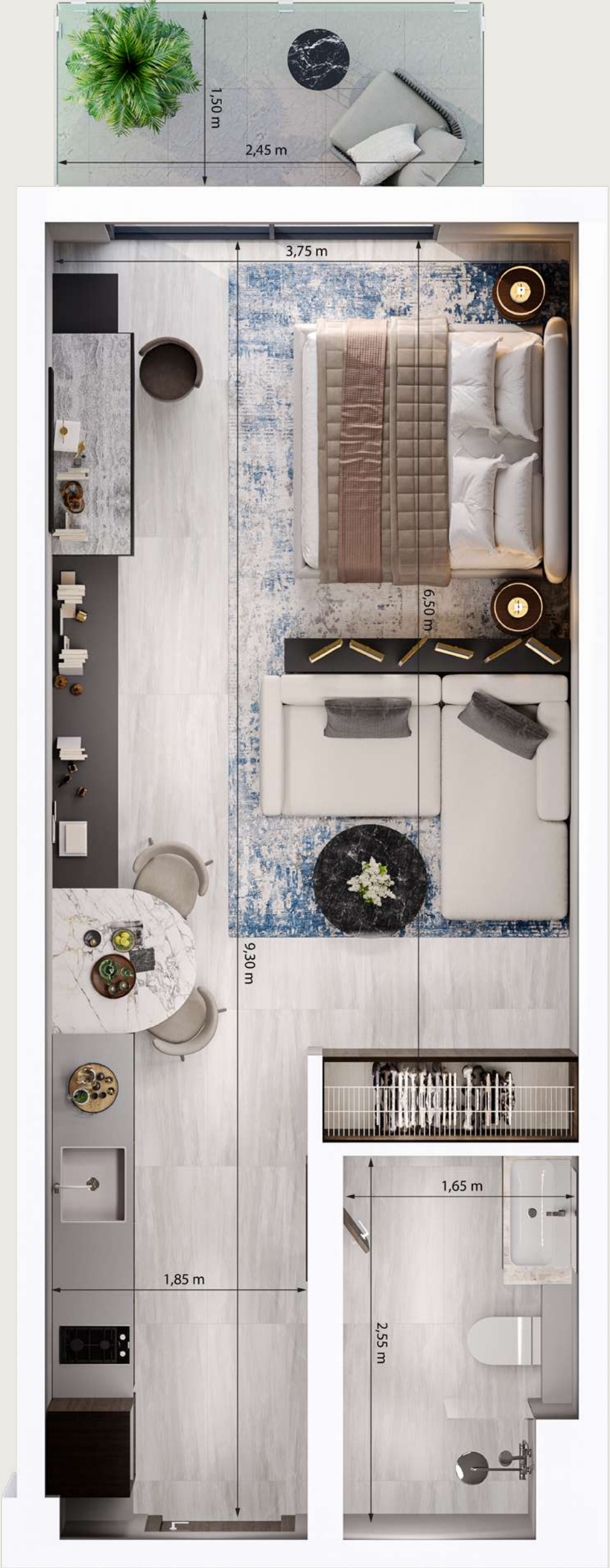
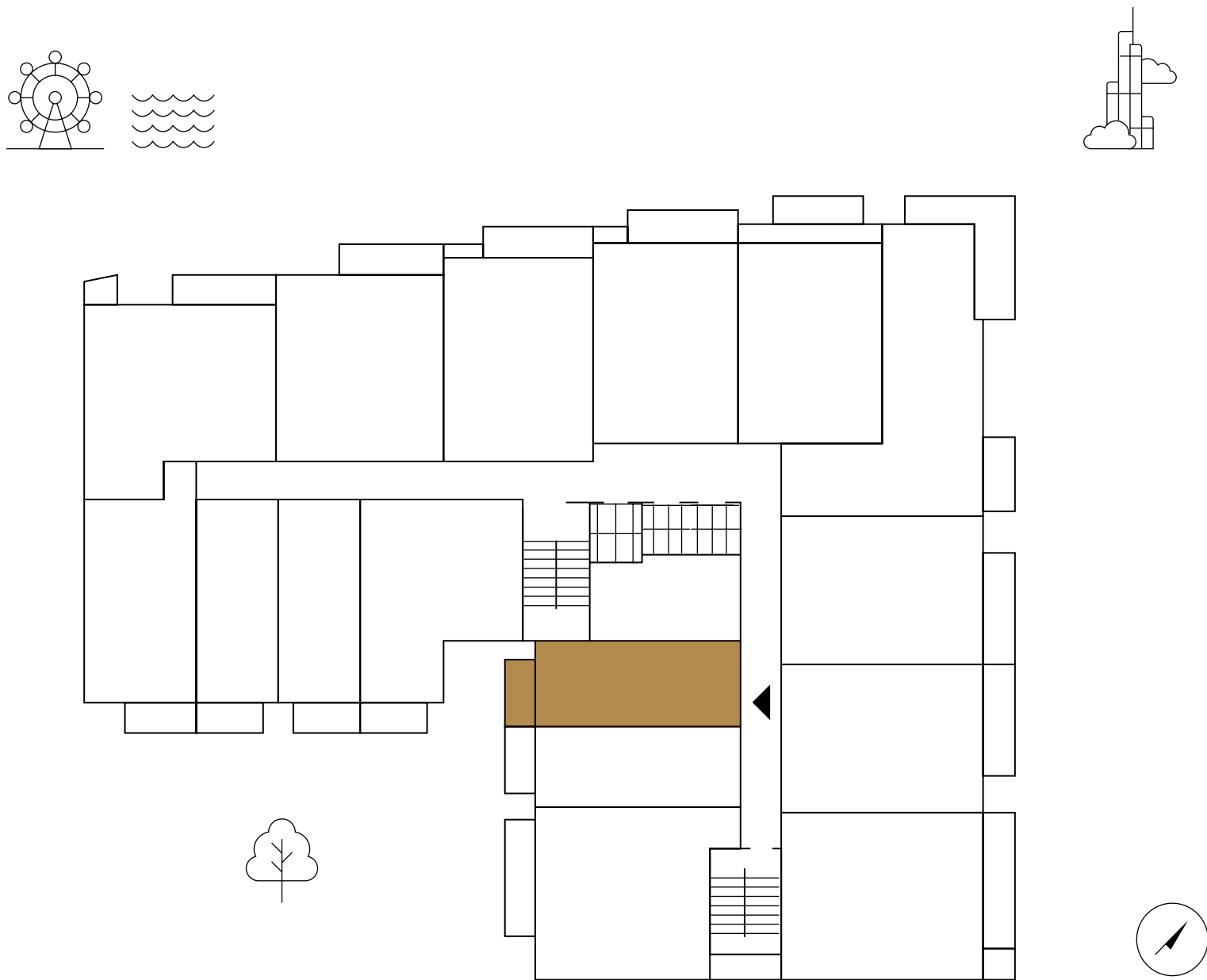
# STUDIO

## 16 SERIES

Suite Area: 399,45 sq.ft.

Balcony Area: 41.98 sq.ft.

Total Area: 441.43 sq.ft.



The floor plan images are for illustration purposes and do not accurately depict the size, features, specifications, fittings, or furnishings. All materials, dimensions, and drawings are approximate. The exact area will be specified in the individual unit's sales agreement



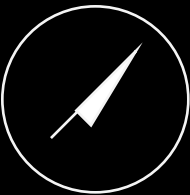
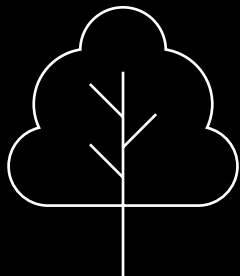
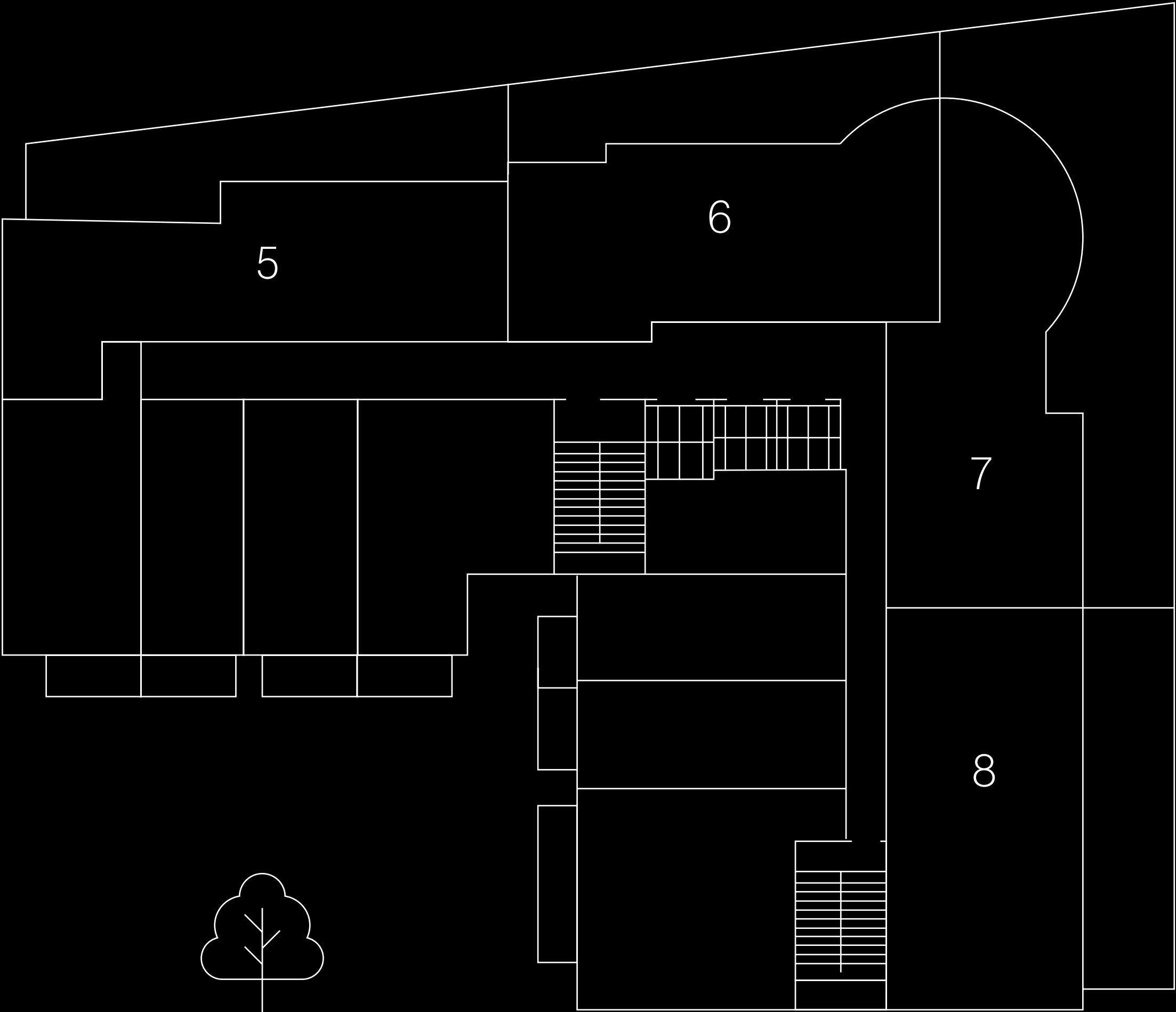
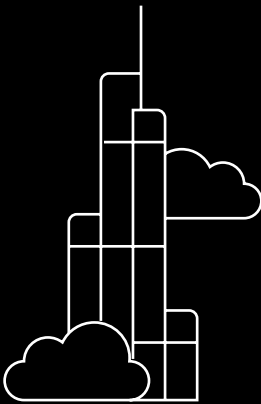
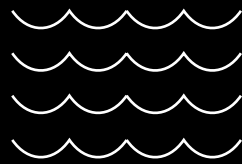
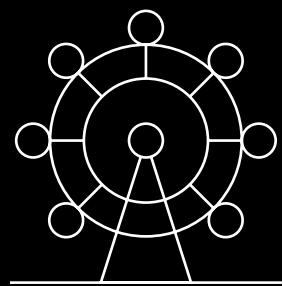






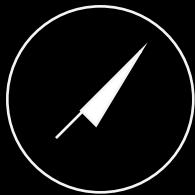


# PENTHOUSES





ROOF FLOOR





# 2 BEDROOM

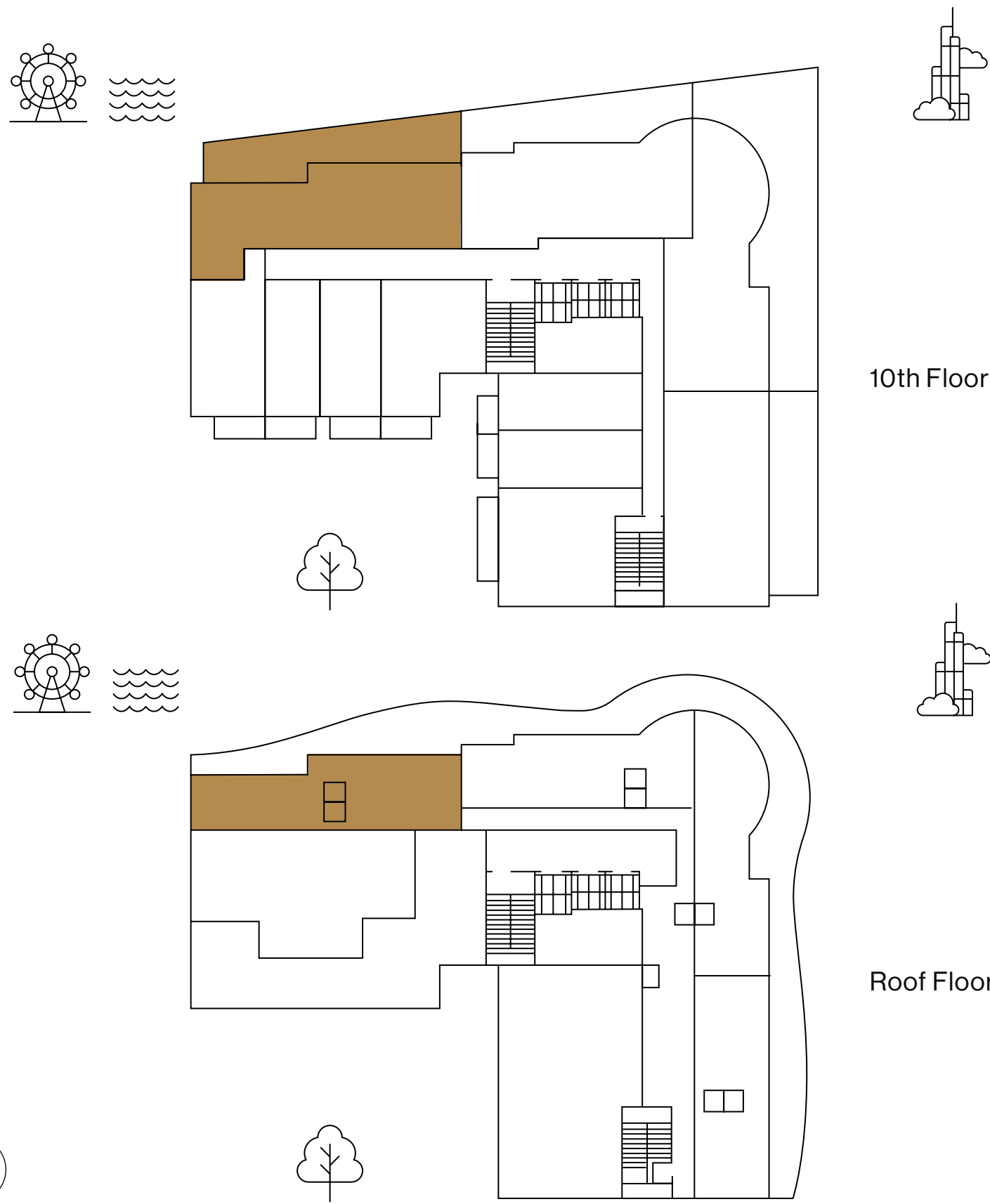
## 5 SERIES

Suite Area: 1,095.23 sq.ft.

Balcony Area: 627.64 sq.ft.

Roof terrace Area: 863.91 sq.ft

Total Area: 441.43 sq.ft.



The floor plan images are for illustration purposes and do not accurately depict the size, features, specifications, fittings, or furnishings. All materials, dimensions, and drawings are approximate. The exact area will be specified in the individual unit's sales agreement



# 2 BEDROOM

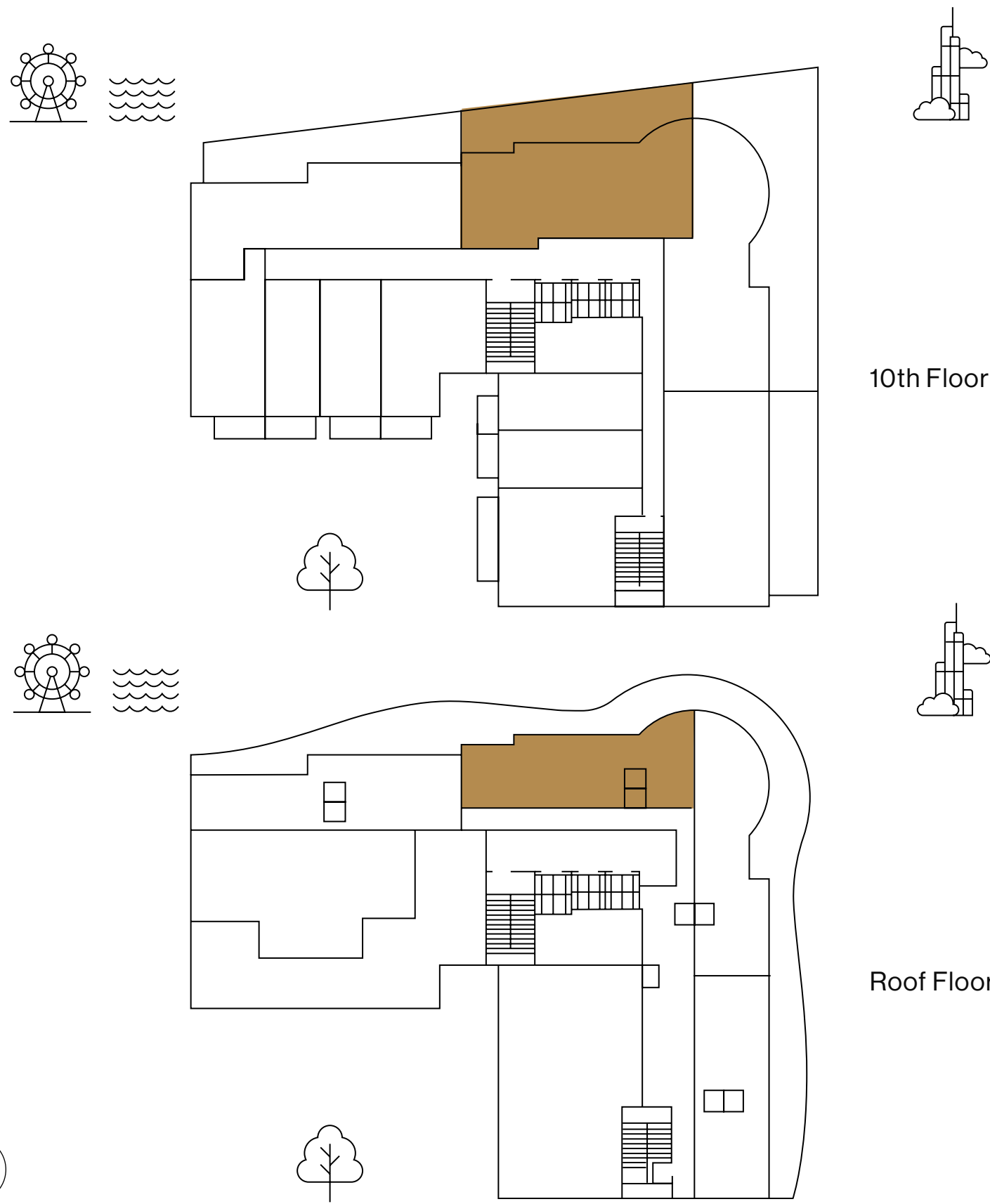
## 6 SERIES

Suite Area: 1,115.89 sq.ft.

Balcony Area: 560.80 sq.ft.

Roof terrace Area: 826.45 sq.ft

Total Area: 2,503.15 sq.ft.



The floor plan images are for illustration purposes and do not accurately depict the size, features, specifications, fittings, or furnishings. All materials, dimensions, and drawings are approximate. The exact area will be specified in the individual unit's sales agreement



# 2 BEDROOM

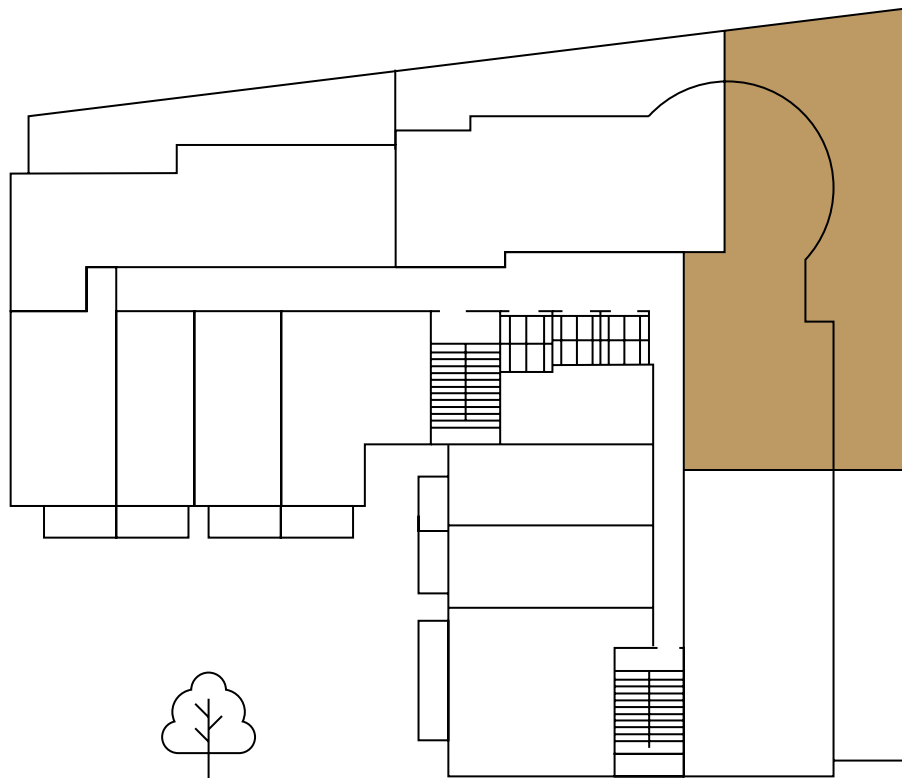
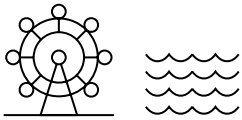
## 7 SERIES

Suite Area: 1,057.77 sq.ft.

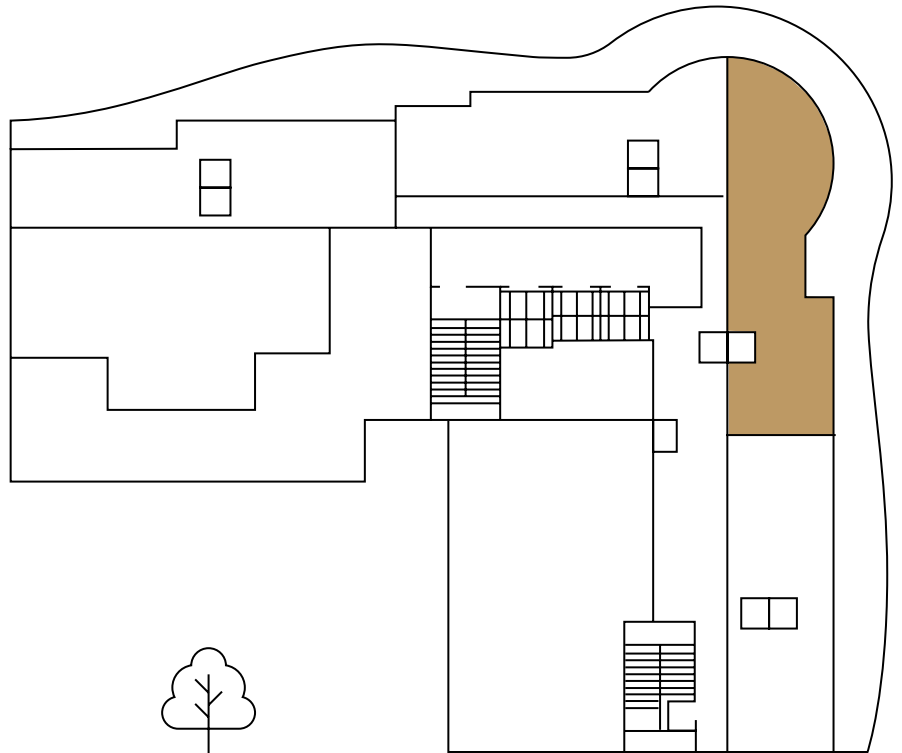
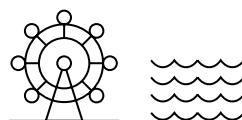
Balcony Area: 1,047.44 sq.ft.

Roof terrace Area: 905.03 sq.ft

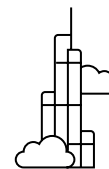
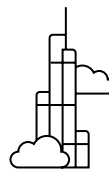
Total Area: 3,010.24 sq.ft.



10th Floor



Roof Floor



The floor plan images are for illustration purposes and do not accurately depict the size, features, specifications, fittings, or furnishings. All materials, dimensions, and drawings are approximate. The exact area will be specified in the individual unit's sales agreement



# 2 BEDROOM

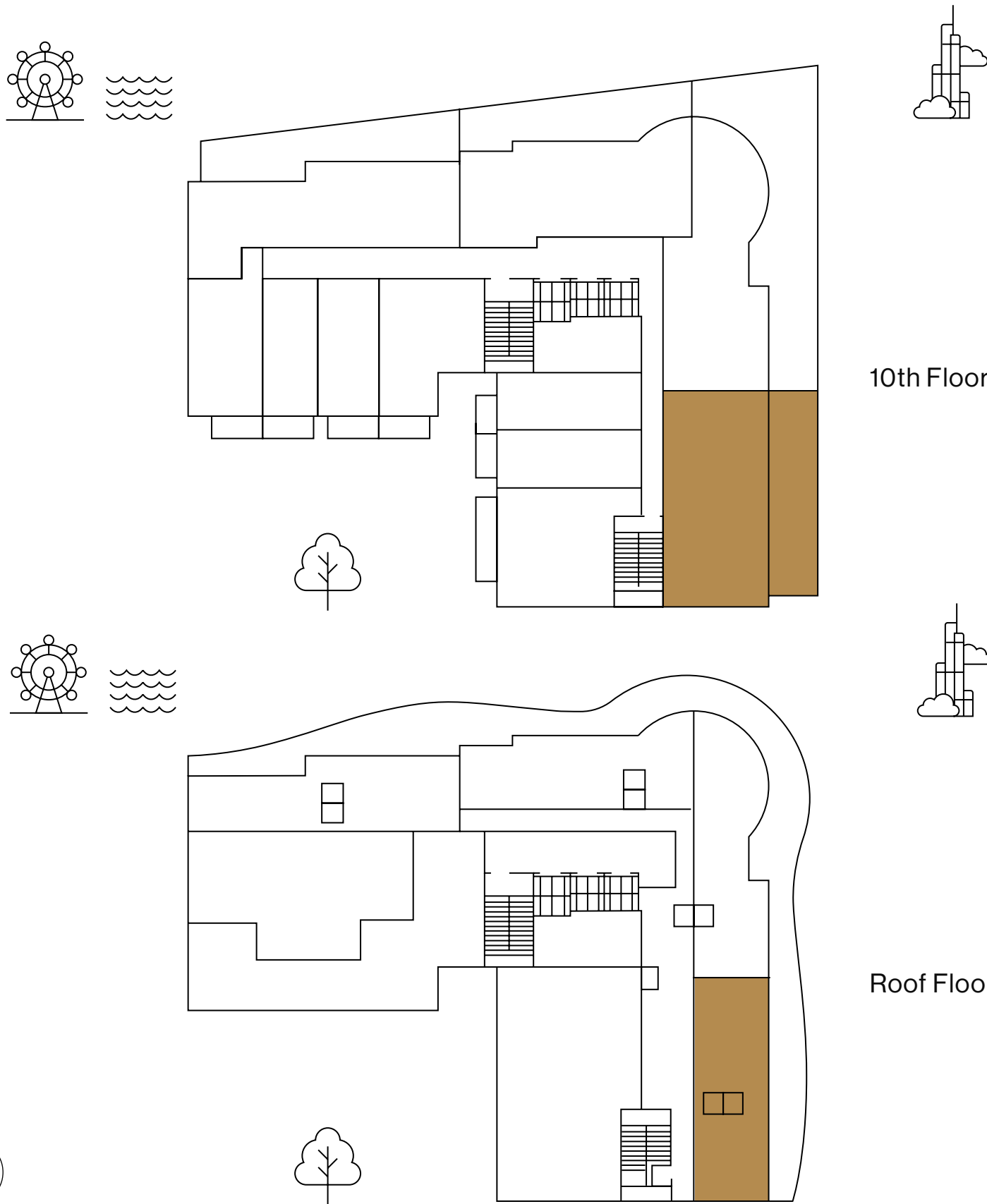
## 8 SERIES

Suite Area: 1,009.55 sq.ft.

Balcony Area: 536.56 sq.ft.

Roof terrace Area: 791.47 sq.ft

Total Area: 2,337.58 sq.ft.



The floor plan images are for illustration purposes and do not accurately depict the size, features, specifications, fittings, or furnishings. All materials, dimensions, and drawings are approximate. The exact area will be specified in the individual unit's sales agreement













SCALE NEW HEIGHTS  
ENTER STONEHENGE'S  
DOMAIN TODAY!



# CONTACTS

Segrex Development

[www.segrexdevelopment.com](http://www.segrexdevelopment.com)